



C

PVC PRESSURE SYSTEMS



PRESSURE FITTINGS

BENDS



SIZE	CODE	COMMENT
15mm x 45°	801-15-45	
15mm x 90°	801-15-90	
20mm x 45°	801-20-45	
20mm x 90°	801-20-90	
25mm x 45°	801-25-45	
25mm x 90°	801-25-90	
32mm x 45°	801-32-45	
32mm x 90°	801-32-90	
40mm x 45°	801-40-45	
40mm x 90°	801-40-90	
50mm x 45°	801-50-45	
50mm x 90°	801-50-90	
65mm x 45°	801-65-45	
65mm x 90°	801-65-90	
80mm x 45°	801-80-45	
80mm x 90°	801-80-90	
100mm x 45°	801-100-45	
100mm x 90°	801-100-90	
150mm x 45°	801-150-45	
150mm x 90°	801-150-90	
200mm x 45°	801-200-45	
200mm x 90°	801-200-90	

SIDE OUTLET ELBOW



SIZE	CODE	COMMENT
20mm x 15mm	802-20-15	Threaded Outlet
25mm x 15mm	802-25-15	Threaded Outlet

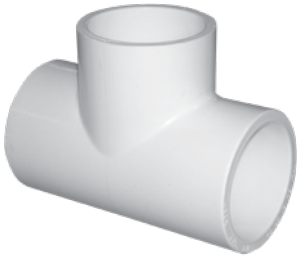
Key

All Item DWV unless noted
M+F = Male, Female Ends

DWV= Drain Waste and Vent
F+F= Female, Female Ends

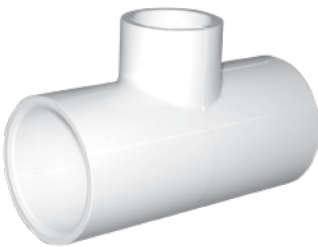
SW= Storm Water
ADJ= Adjustable

PLAIN TEE



SIZE	CODE	COMMENT
15mm	804-15	
20mm	804-20	
25mm	804-25	
32mm	804-32	
40mm	804-40	
50mm	804-50	
65mm	804-65	
80mm	804-80	
100mm	804-100	
150mm	804-150	
200mm	804-200	

PLAIN REDUCING TEE



SIZE	CODE	COMMENT
20mm x 15mm	805-20-15	
25mm x 15mm	805-25-15	
25mm x 20mm	805-25-20	
32mm x 25mm	805-32-25	
40mm x 15mm	805-40-15	
40mm x 20mm	805-40-20	
40mm x 25mm	805-40-25	
40mm x 32mm	805-40-32	
50mm x 20mm	805-50-20	
50mm x 25mm	805-50-25	
50mm x 40mm	805-50-40	
80mm x 25mm	805-80-25	
80mm x 40mm	805-80-40	
80mm x 50mm	805-80-50	
80mm x 65mm	805-80-65	
100mm x 50mm	805-100-50	
100mm x 80mm	805-100-80	
150mm x 100mm	805-150-100	

Key

All Item DWV unless noted
M+F = Male, Female Ends

DWV= Drain Waste and Vent
F+F= Female, Female Ends

SW= Storm Water
ADJ= Adjustable

FAUCET SOCKET



SIZE	CODE	COMMENT
15mm	806-15	Over Pipe, Female Thread
20mm	806-20	
20mm x 15mm	806-20-15	
25mm	806-25	
25mm x 15mm	806-25-15	
32mm	806-32	
40mm	806-40	
50mm	806-50	
65mm	806-65	
80mm	806-80	
100mm	806-100	
150mm	806-150	

FAUCET TEE



SIZE	CODE	COMMENT
15mm	807-15	Female Thread on Offtake
20mm	807-20	
20mm x 15mm	807-20-15	
25mm	807-25	
25mm x 15mm	807-25-15	
25mm x 20mm	807-25-20	
32mm	807-32	
32mm x 25mm	807-32-25	
40mm	807-40	
40mm x 15mm	807-40-15	
40mm x 20mm	807-40-20	
40mm x 25mm	807-40-25	
50mm	807-50	
50mm x 20mm	807-50-20	
50mm x 25mm	807-50-25	
50mm x 40mm	807-50-40	

Key

All Item DWV unless noted
M+F = Male, Female Ends

DWV= Drain Waste and Vent
F+F= Female, Female Ends

SW= Storm Water
ADJ= Adjustable

FAUCET ELBOW



SIZE	CODE	COMMENT
15mm x 90°	808-15-90	Female Thread one end
20mm x 15mm x 90°	808-20-15-90	
20mm x 90°	808-20-90	
25mm x 15mm x 90°	808-25-15-90	
25mm x 20mm x 90°	808-25-20-90	
25mm x 90°	808-25-90	
32mm x 90°	808-32-90	
40mm x 90°	808-40-90	
50mm x 90°	808-50-90	

COMPRESSION COUPLING



SIZE	CODE	COMMENT
15mm	809-15	
20mm	809-20	
25mm	809-25	
32mm	809-32	
40mm	809-40	
50mm	809-50	
65mm	809-65	
80mm	809-80	
100mm	809-100	

PLAIN SOCKET, COUPLING



SIZE	CODE	COMMENT
15mm	810-15	
20mm	810-20	
25mm	810-25	
32mm	810-32	
40mm	810-40	
50mm	810-50	
65mm	810-65	
80mm	810-80	
100mm	810-100	
150mm	810-150	
200mm	810-200	

Key

All Item DWV unless noted
M+F = Male, Female Ends

DWV= Drain Waste and Vent
F+F= Female, Female Ends

SW= Storm Water
ADJ= Adjustable

SOCKET UNION



SIZE	CODE	COMMENT
15mm	811-15	
20mm	811-20	
25mm	811-25	
32mm	811-32	
40mm	811-40	
50mm	811-50	
65mm	811-65	
80mm	811-80	
100mm	811-100	

SOCKET UNION THREADED



SIZE	CODE	COMMENT
15mm	811T-15	Female Thread each end
20mm	811T-20	
25mm	811T-25	
32mm	811T-32	
40mm	811T-40	
50mm	811T-50	
65mm	811T-65	
80mm	811T-80	
100mm	811T-100	

VALVE SOCKET



SIZE	CODE	COMMENT
15mm	813-15	Over Pipe Male Thread
20mm	813-20	
25mm	813-25	
32mm	813-32	
40mm	813-40	
50mm	813-50	
65mm	813-65	
80mm	813-80	
100mm	813-100	
150mm	813-150	

Key

All Item DWV unless noted
M+F = Male, Female Ends

DWV= Drain Waste and Vent
F+F= Female, Female Ends

SW= Storm Water
ADJ= Adjustable

FAUCET SPIGOT



SIZE	CODE	COMMENT
15mm	816-15	Into Socket Female Thread
20mm	816-20	
20mm x 15mm	816-20-15	
25mm	816-25	
25mm x 20mm	816-25-20	
32mm	816-32	
40mm	816-40	
50mm	816-50	

VALVE SPIGOT



SIZE	CODE	COMMENT
15mm	817-15	Into Socket Male Thread
20mm	817-20	
25mm	817-25	
32mm	817-32	
40mm	817-40	
50mm	817-50	
80mm	817-80	
100mm	817-100	

REDUCING SOCKET



SIZE	CODE	COMMENT
20mm x 15mm	823-20-15	
25mm x 15mm	823-25-15	
25mm x 20mm	823-25-20	
32mm x 20mm	823-32-20	
32mm x 25mm	823-32-25	
40mm x 20mm	823-40-20	
40mm x 25mm	823-40-25	
40mm x 32mm	823-40-32	
50mm x 20mm	823-50-20	
50mm x 25mm	823-50-25	
50mm x 32mm	823-50-32	
50mm x 40mm	823-50-40	
65mm x 50mm	823-65-50	
80mm x 50mm	823-80-50	
80mm x 65mm	823-80-65	
100mm x 50mm	823-100-50	
100mm x 80mm	823-100-80	
125mm x 100mm	823-125-100	
150mm x 100mm	823-150-100	
200mm x 150mm	823-200-150	
114mm x 110mm	ADP114-100	100mm Adaptor Pressure to DWV

Key

All Item DWV unless noted
M+F = Male, Female Ends

DWV= Drain Waste and Vent
F+F= Female, Female Ends

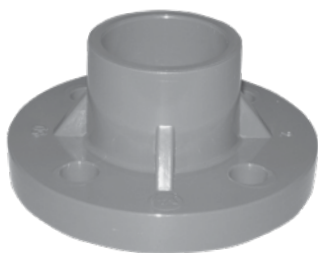
SW= Storm Water
ADJ= Adjustable

REDUCING BUSH



SIZE	CODE	COMMENT
20mm x 15mm	824-20-15	
25mm x 15mm	824-25-15	
25mm x 20mm	824-25-20	
32mm x 20mm	824-32-20	
32mm x 25mm	824-32-25	
40mm x 15mm	824-40-15	
40mm x 20mm	824-40-20	
40mm x 25mm	824-40-25	
40mm x 32mm	824-40-32	
50mm x 25mm	824-50-25	
50mm x 40mm	824-50-40	
65mm x 50mm	824-65-50	
80mm x 50mm	824-80-50	
80mm x 65mm	824-80-65	
100mm x 50mm	824-100-50	
100mm x 80mm	824-100-80	
150mm x 100mm	824-150-100	
200mm x 150mm	824-200-150	

DRILLED FULL FACE FLANGE



SIZE	CODE	COMMENT
15mm	852-15	Rubber Gaskets on page 10
20mm	852-20	
25mm	852-25	
32mm	852-32	
40mm	852-40	
50mm	852-50	
65mm	852-65	
80mm	852-80	
100mm	852-100	
150mm	852-150	

Key

All Item DWV unless noted
M+F = Male, Female Ends

DWV= Drain Waste and Vent
F+F= Female, Female Ends

SW= Storm Water
ADJ= Adjustable

PLAIN END CAP



SIZE	CODE	COMMENT
15mm	830-15	
20mm	830-20	
25mm	830-25	
32mm	830-32	
40mm	830-40	
50mm	830-50	
65mm	830-65	
80mm	830-80	
100mm	830-100	
150mm	830-150	
200mm	830-200	

THREADED END CAP



SIZE	CODE	COMMENT
15mm	830T-15	Female Thread
20mm	830T-20	
25mm	830T-25	
32mm	830T-32	
40mm	830T-40	
50mm	830T-50	
80mm	830T-80	
100mm	830T-100	
150mm	830T-150	

SCREWED PLUG



SIZE	CODE	COMMENT
15mm	837-15	Male Thread
20mm	837-20	
25mm	837-25	
32mm	837-32	
40mm	837-40	
50mm	837-50	

Key

All Item DWV unless noted
M+F = Male, Female Ends

DWV= Drain Waste and Vent
F+F= Female, Female Ends

SW= Storm Water
ADJ= Adjustable

PIPE CLIP



SIZE	CODE	COMMENT
15mm	840-15	
20mm	840-20	
25mm	840-25	
32mm	840-32	
40mm	840-40	
50mm	840-50	

For Larger Clips see Clips in Section A

RUBBER GASKET FULL FACE FLANGE



SIZE	CODE	COMMENT
15mm	855-15	
20mm	855-20	
25mm	855-25	
32mm	855-32	
40mm	855-40	
50mm	855-50	
65mm	855-65	
80mm	855-80	
100mm	855-100	
150mm	855-150	
300mm	855-300	

VAN STONE FLANGE



SIZE	CODE	COMMENT
80mm	854-80	
100mm	854-100	
150mm	854-150	
200mm	854-200	
250mm	854-250	
300mm	854-300	

Key

All Item DWV unless noted
M+F = Male, Female Ends

DWV= Drain Waste and Vent
F+F= Female, Female Ends

SW= Storm Water
ADJ= Adjustable

HOSE TAIL



SIZE	CODE	COMMENT
15mm	860-15	
20mm	860-20	
25mm	860-25	
32mm	860-32	
40mm	860-40	
50mm	860-50	
65mm	860-65	
80mm	860-80	

BALL VALVE THREADED



SIZE	CODE	COMMENT
15mm	PBVT-15	Female Thread each end
20mm	PBVT-20	
25mm	PBVT-25	
32mm	PBVT-32	
40mm	PBVT-40	
50mm	PBVT-50	
65mm	PBVT-65	
80mm	PBVT-80	
100mm	PBVT-100	

BALL VALVE SOCKETED



SIZE	CODE	COMMENT
15mm	PBVS-15	
20mm	PBVS-20	
25mm	PBVS-25	
32mm	PBVS-32	
40mm	PBVS-40	
50mm	PBVS-50	

Key

All Item DWV unless noted
M+F = Male, Female Ends

DWV= Drain Waste and Vent
F+F= Female, Female Ends

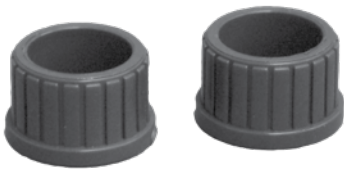
SW= Storm Water
ADJ= Adjustable

DOUBLE UNION BALL VALVE THREADED



SIZE	CODE	COMMENT
15mm	PDUVT-15	
20mm	PDUVT-20	
25mm	PDUVT-25	
32mm	PDUVT-32	
40mm	PDUVT-40	
50mm	PDUVT-50	
65mm	PDUVT-65	
80mm	PDUVT-80	
100mm	PDUVT-100	
150mm	PDUVT-150	

SOCKET END FOR DOUBLE UNION VALVE



SIZE	CODE	COMMENT
15mm	PDUE-15	
20mm	PDUE-20	
25mm	PDUE-25	
32mm	PDUE-32	
40mm	PDUE-40	
50mm	PDUE-50	
65mm	PDUE-65	
80mm	PDUE-80	
100mm	PDUE-100	

Key

All Item DWV unless noted
M+F = Male, Female Ends

DWV= Drain Waste and Vent
F+F= Female, Female Ends

SW= Storm Water
ADJ= Adjustable

GIBALT REPAIR COUPLINGS ALLOY



SIZE	CODE	COMMENT
80mm	GIB225-80	Suit PVC Pressure Pipe
100mm	GIB225-100	
150mm	GIB225-150	
200mm	GIB225-200	

TAPPING BANDS EPOXY COATED ALLOY



SIZE	CODE	COMMENT
80 x 50	TAPA80-50	Suit PVC Pressure Pipe
100 x 50	TAPA100-50	
150 x 50	TAPA150-50	
150 x 80	TAPA150-80	
150 x 100	TAPA150-100	
200 x 50	TAPA200-50	
200 x 80	TAPA200-80	
200 x 100	TAPA200-100	

CHECK VALVE BALL SOCKET



SIZE	CODE	COMMENT
20mm	PCVB-20	
25mm	PCVB-25	
32mm	PCVB-32	
40mm	PCVB-40	
50mm	PCVB-50	

Key

All Item DWV unless noted
M+F = Male, Female Ends

DWV= Drain Waste and Vent
F+F= Female, Female Ends

SW= Storm Water
ADJ= Adjustable

GIBAULT EPDM O RING



SIZE	CODE	COMMENT
80mm	GIB-80	
100mm	GIB-100	
150mm	GIB-150	
200mm	GIB-200	

TAPPING BANDS O RING



SIZE	CODE	COMMENT
80x50	TAPOR80-50	
100x50	TAPOR100-50	
150x50	TAPOR150-50	
150x80	TAPOR150-80	
200x50	TAPOR200-50	
200x80	TAPOR200-80	
150x100	TAPOR150-100	
200x100	TAPOR200-100	

TANK CONNECTOR



SIZE	CODE	COMMENT
25mm	TIF25	2 back nuts and washer
32mm	TIF32	
40mm	TIF40	
50mm	TIF50	
80mm	TIF80	
100mm	TIF100	

Key

All Item DWV unless noted
M+F = Male, Female Ends

DWV= Drain Waste and Vent
F+F= Female, Female Ends

SW= Storm Water
ADJ= Adjustable

PVC-u PRESSURE PIPE

- Made to AS/NZS 1477
- 6 metre lengths
- Solvent joint
- Lead free product



PRODUCT CODE	DESCRIPTION	PN RATING	NOMINAL SIZE (MM)	OUTSIDE DIAMETER (MM)
800-15-6MPN18	15mm Pressure Pipe Solvent Joint	PN18	15	20
800-20-6MPN12	20mm Pressure Pipe Solvent Joint	PN12	20	28
800-25-6MPN12	25mm Pressure Pipe Solvent Joint	PN12	25	33
800-32-6MPN12	32mm Pressure Pipe Solvent Joint	PN12	32	40
800-40-6MPN12	40mm Pressure Pipe Solvent Joint	PN12	40	48
800-50-6MPN12	50mm Pressure Pipe Solvent Joint	PN12	50	58
800-65-6MPN12	65mm Pressure Pipe Solvent Joint	PN12	65	73
800-80-6MPN12	80mm Pressure Pipe Solvent Joint	PN12	80	88
800-100-6MPN12	100mm Pressure Pipe Solvent Joint	PN12	100	114
800-150-6MPN12	150mm Pressure Pipe Solvent Joint	PN12	150	160

MAXIMUM WORKING PRESSURE COMPARISON

PRESSURE CLASS	PN	BAR	METRES HEAD	MPA	KPA	PSI
A	3	3	30	0.3	300	45
B	6	6	60	0.6	600	90
C	9	9	90	0.9	900	135
D	12	12	120	1.2	1,200	180
E	15	15	150	1.5	1,500	225
F	18	18	180	1.8	1,800	270
No class defined	10	10	100	1	1,000	150
No class defined	16	16	160	1.6	1,600	240
No class defined	20	20	200	2	2,000	300
No class defined	25	25	250	2.5	2,500	375

Key

All Item DWV unless noted
M+F = Male, Female Ends

DWV= Drain Waste and Vent
F+F= Female, Female Ends

SW= Storm Water
ADJ= Adjustable

BLUE HOSE

- Plasticised PVC hose
- Light blue with blue spiral
- Temperature range 10°C to 50°C

OUR CODE	DESCRIPTION	INSIDE DIAMETER	WALL THICKNESS MM	WORKING PRESSURE		BENDING RADIUS MM	VACUUM NEGATIVE KPA
				KG/CM ²	PSI		
BH 020-30M	20mm x 30mtr	3/4" or 20mm	2.2	5	70	40	80
BH 025-30M	25mm x 30mtr	1" or 25mm	2.2	5	70	40	80
BH 032-30M	32mm x 30mtr	1.1/4" or 32mm	2.4	5	70	40	70
BH 040-30M	40mm x 30mtr	1.1/2" or 40mm	2.6	5	70	60	70
BH 050-30M	50mm x 30mtr	2" or 50mm	3	5	70	90	70
BH 076-30M	76mm x 30mtr	3" or 76mm	3.4	4	57	110	50
BH 100-30M	100mm x 30mtr	4" or 100mm	4.3	4	57	160	40

Sold per metre if required

FEATURES

- Plasticised PVC hose with spiral reinforcement of anti-shock rigid PVC
- Smooth bore
- Lightly corrugated external surface
- Very light and flexible compared to rubber hose and more durable
- Cold resistant

APPLICATIONS

- Suction and discharge of liquids, abrasive powders, fumes, vapours and shavings
- Recommended for Diesel fuels, Liquid Petroleum products, Lubricating Oils, Mineral Oils, Light Oils and Transformer Oils

