

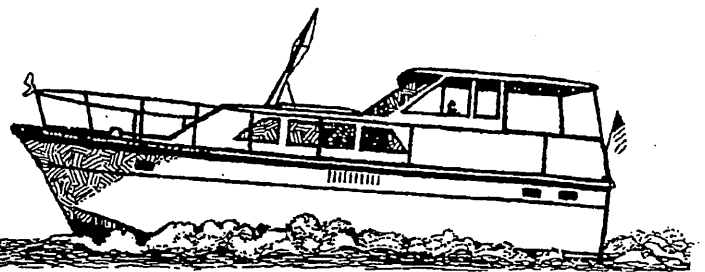
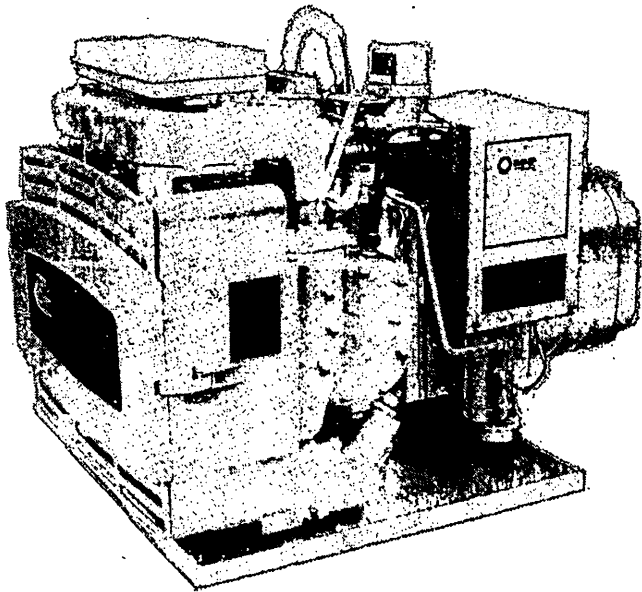


# parts catalog

for series

# MCKK

**marine electric  
generating sets**



FORM NUMBER

927-0221

Printed in U.S.A.

ISSUE DATE

5-78  
(SPEC A-G)

# GENERAL INFORMATION

## INSTRUCTIONS FOR ORDERING REPAIR PARTS



INFORMATION ON THIS PAGE INCLUDED FOR OWNERS WHO HAVE PURCHASED THIS CATALOG.

For parts or service, contact the dealer from whom you purchased this equipment or refer to your Nearest Authorized Onan Parts and Service Center.

To avoid errors or delay in filling your parts order, please furnish all information requested.

Always refer to the nameplate on your unit:

1. Always give the MODEL and SPEC NO. and SERIAL NO.

	
<b>ELECTRIC GEN SET</b>	
MODEL AND SPEC NO	
[ ]	
SERIAL NO [ ]	
<b>IMPORTANT</b> ALWAYS GIVE ABOVE NOS. WHEN ORDERING PARTS	
A C VOLTS [ ]	PH [ ]
KVA [ ]	KW [ ]
PF [ ]	AMPS [ ] Hz [ ]
DC VOLTS [ ]	AMPS [ ]
WATTS [ ]	
RPM [ ]	BAT [ ]
MANUFACTURED BY ONAN DIVISION OF ONAN CORPORATION MINNEAPOLIS MINNESOTA U S A FOR ELECT. EQUIPMENT ONLY 	

For handy reference, insert "YOUR" nameplate information in the spaces above.

2. Do not order by reference number or group number; always use part number and description.
3. Give the part number, description and quantity needed of each item. If an older part cannot be identified, return the part prepaid to your dealer or nearest AUTHORIZED SERVICE STATION. Print your name and address plainly on the package. Write a letter to the same address stating the reason for returning the part.
4. State definite shipping instructions. Any claim for loss or damage to your unit in transit should be filed promptly against the transportation company making the delivery. Shipments are complete unless the packing list indicates items are back ordered.

Prices are purposely omitted from this Parts Catalog due to the confusion resulting from fluctuating costs, import duties, sales taxes, exchange rates, etc.

For current parts prices, consult your Onan Dealer, Distributor or Parts and Service Center.

"En esta lista de partes los precios se omiten de proposito, ya que bastante confusion resulto de fluctuaciones de los precios, derechos aduanales, impuestos de venta, cambios extranjeros, etc."

Consiga los precios vigentes de su distribuidor de productos "ONAN".

# TABLE OF CONTENTS

GROUP TITLES	PAGE
Introduction .....	2
Data Table, Generating Set .....	2
 <b>STANDARD EQUIPMENT PARTS SECTION</b>	
Piston and Rod .....	3
Crankshaft and Flywheel .....	3
Block, Cylinder .....	4,5
Housing .....	6
Camshaft .....	6
Oil System .....	7
Gearcase .....	8
Ignition System .....	9
Fuel System .....	10,11
Carburetor Parts (Carter) .....	12
Carburetor Parts (Zenith) .....	13
Choke, Thermo-Magnetic .....	14
Vacuum Speed Booster Parts .....	15
Pump Parts, Fuel .....	16
Pump Parts, Fuel - Electric .....	16
Drip Pan Assembly .....	17
Exhaust Manifold and Water Pump .....	18,19
Pump Parts, Water .....	20
Control - Spec A through C Only .....	21
Control - Spec D Only .....	22
Control - Spec E and F Only .....	23
Control, Start Adapter .....	24
Control, Disconnect Adapter .....	24
Control Assembly .....	25
Control - Begin Spec G .....	26,27
Generator - Spec A through C Only .....	28,29
Generator - Spec D Only .....	30,31
Generator - Spec E and F Only .....	32,33
Generator - Begin Spec G .....	34,35
Service Kits and Miscellaneous .....	36
 <b>OPTIONAL EQUIPMENT SECTION</b>	
Control-O-Matic - Spec C Only .....	37
Control-O-Matic - Begin Spec D .....	38,39
Heat Exchanger .....	40
Pump Parts, Water .....	41
Load Sensor Amplifier .....	41
Aqualift Exhaust System .....	42

**927-0221**  
**MCCK PARTS CATALOG**  
**INTRODUCTION**

This catalog applies to the standard MCCK Generator Sets as listed below. Parts are arranged in groups of related items. Each illustrated part is identified by a reference number corresponding to the same reference number in the parts list for that group. Parts illustrations are typical. Using the *Model* and *Spec No.* from the nameplate, select the *Parts Key No.* (1, 2, etc., in the last column) that applies to your set *Model* and *Spec No.* This *Parts Key No.* represents parts that differ between models. Unless otherwise mentioned in the description, parts are interchangeable between models. Right and left sides are determined by facing the engine end (front) of the set.

**GENERATING SET DATA TABLE**

£ MODEL NO. AND SPECIFICATION	ELECTRICAL DATA					PARTS KEY NO.
	WATTS	VOLTS	HERTZ	WIRE	PHASE	
†						
4.0MCCK-1R/*    4.0MCCK-1A/*	4000	120	60	2	1	1
+4.0MCCK-2R/*    4.0MCCK-2A/*	4000	240	60	2	1	
+4.0MCCK-3R/*    4.0MCCK-3A/*	4000	120/240	60	3	1	
4.0MCCK-3CR/*	4000	120/240	60	§	1	
3.5MCCK-51R/*    3.5MCCK-51A/*	3500	120	50	2	1	1
+3.5MCCK-52R/*    3.5MCCK-52A/*	3500	240	50	2	1	
+3.5MCCK-53R/*    3.5MCCK-53A/*	3500	120/240	50	3	1	
3.5MCCK-53CR/*	3500	120/240	50	§	1	
6.5MCCK-1R/*    6.5MCCK-1A/*	6500	120	60	2	1	2
+6.5MCCK-2R/*    6.5MCCK-2A/*	6500	240	60	2	1	
+6.5MCCK-3R/*    6.5MCCK-3A/*	6500	120/240	60	3	1	
6.5MCCK-3CR/*	6500	120/240	60	§	1	
6.5MCCK-4R/*	6500	120/208	60	4	3	
5.5MCCK-51R/*    5.5MCCK-51A/*	5500	120	50	2	1	2
+5.5MCCK-52R/*    5.5MCCK-52A/*	5500	240	50	2	1	
+5.5MCCK-53R/*    5.5MCCK-53A/*	5500	120/240	50	3	1	
5.5MCCK-53CR/*	5500	120/240	50	§	1	

\* - The Specification Letter Advances (A to B, B to C, etc.) with manufacturing changes.

£ - New model designations shown, begin during 1969. Previous designations did not use a decimal point in the KW rating. EXAMPLE: 4.0MCCK was formerly 4MCCK, 3.5MCCK was formerly 305MCCK, etc.

† - Units with "A" in designation have set mounted "Control-O-Matic".

+ - Not manufactured beginning Spec D.

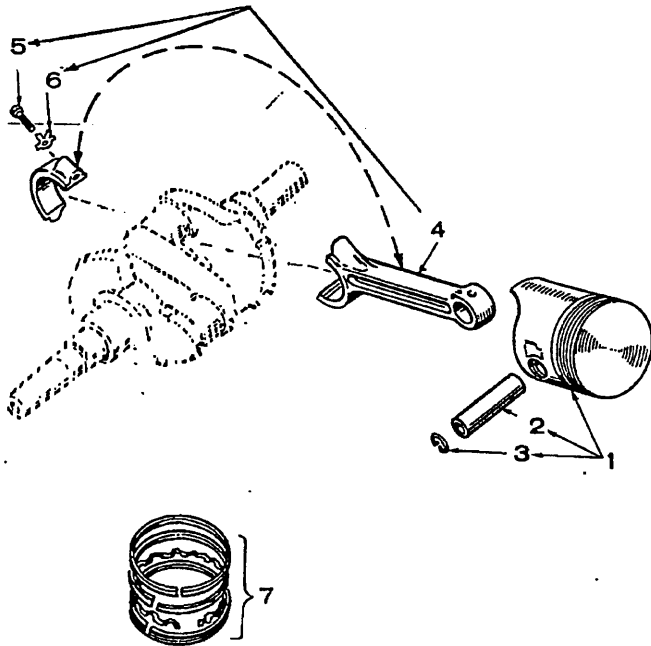
§ - Set is reconnectable for 120 volt 2 wire, 240 volt 2 wire or 120/240 volt 3 wire service.

NOTE: Hertz is a unit of frequency equal to one cycle per second.

## STANDARD PARTS SECTION

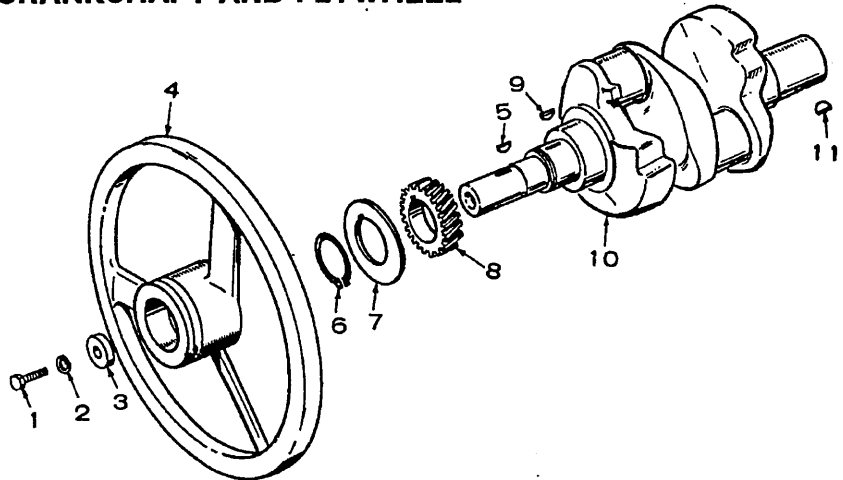
This section contains the illustrated parts listing for the standard generator sets listed in the Data Table.

## PISTON AND CONNECTING ROD



REF. NO.	PART NO.	QTY. USED	PART DESCRIPTION
1	PISTON AND PIN (Includes Retaining Rings)		
	112-0136	2	Standard
	112-0136-05	2	.005" Oversize
	112-0136-10	2	.010" Oversize
	112-0136-20	2	.020" Oversize
	112-0136-30	2	.030" Oversize
	112-0136-40	2	.040" Oversize
2	PIN, PISTON		
	112-0069	2	Standard
3	112-0003	4	Ring, Retaining
4	ROD, CONNECTING		
	114-0098	2	Standard
	114-0098-02	2	.002" Undersize
	114-0098-10	2	.010" Undersize
	114-0098-20	2	.020" Undersize
	114-0098-30	2	.030" Undersize
5	110-0284	4	Screw, Cap - Hex Head (5/16-18 x 1-1/2")
6	114-0059	4	Washer, Lock - External Tooth
7	RING SET, PISTON		
	113-0152	2	Standard
	113-0152-05	2	.005" Oversize
	113-0152-10	2	.010" Oversize
	113-0152-20	2	.020" Oversize
	113-0152-30	2	.030" Oversize
	113-0152-40	2	.040" Oversize

## CRANKSHAFT AND FLYWHEEL



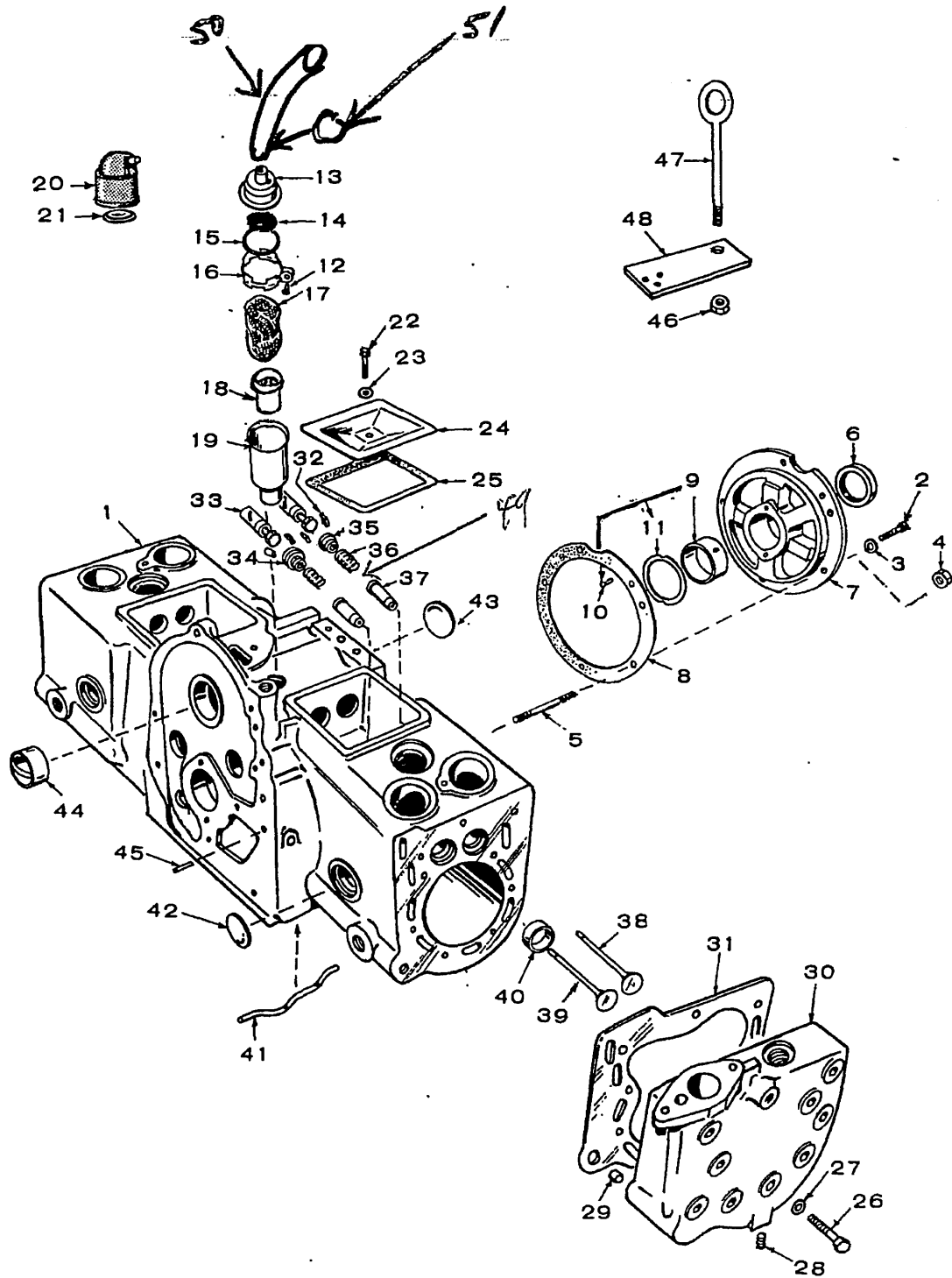
REF. NO.	PART NO.	QTY. USED	PART DESCRIPTION
1	104-0170	1	Screw, Cap - Hex Head (7/16-14 x 4-1/4")
2	850-0055	1	Washer, Lock - Spring (7/16)
3	526-0017	1	Washer, Flat (15/32" ID x 1-1/4" OD x 1/4" Thk)
4	104-0599	1	Flywheel
5	515-0227	1	Key Kit, Woodruff
6	518-0014	1	Ring, Retaining
7	104-0043	1	Washer, Flat - Keyed
8	104-0032	1	Gear, Crankshaft
9	515-0001	1	* Key, Woodruff

REF. NO.	PART NO.	QTY. USED	PART DESCRIPTION
10	CRANKSHAFT (Includes parts marked X)		
ER 104-0882-1323		1	Spec A thru F
Y500-104-0966-1346		1	Begin Spec G
11	515-0006	1	Key, Woodruff - Spec A thru F

12 515-0098 1 \*Key

\*- Parts included in 104-1323 Crankshaft  
104-1346 Key  
927-0221 (MAY 1978) Key

# CYLINDER BLOCK



## CYLINDER BLOCK

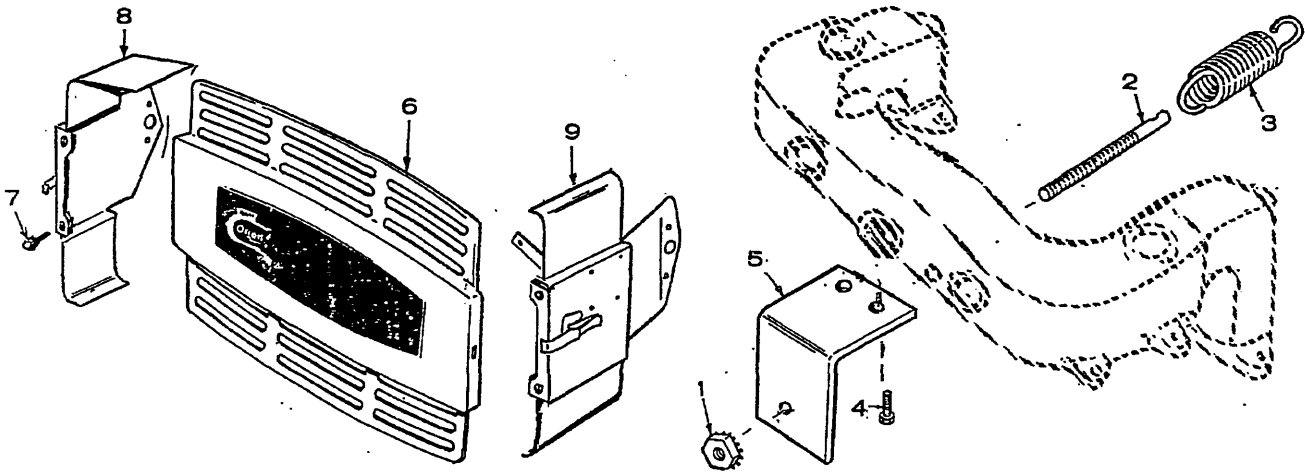
REF. NO.	PART NO.	QTY. USED	PART DESCRIPTION	REF. NO.	PART NO.	QTY. USED	PART DESCRIPTION
1	BLOCK ASSEMBLY, CYLINDER			24	110-0666	2	Cover, Valve
	110-2452	1	Spec A Only (Includes Parts Marked *)	25	110-0667	2	Gasket, Valve Cover
	110-2553	1	Begin Spec B (Includes Parts Marked †)	26	800-0509	18	Screw, Cap - Hex Head (5/16-18 x 2-1/2")
2	800-0512	5	† *Screw, Cap - Hex Head (5/16-18 x 1")	27	526-0122	18	Washer, Flat (11/32" ID x 23/32" OD x 0.134" Thk)
3	850-0045	5	† *Washer, Lock - Spring (5/16)	28	502-0153	2	Plug, Pipe (1/4)
4	110-0445	5	Nut, Hex - Rear Bearing Plate (Spec A through C)	29	517-0087	2	Plug, Pipe - Brass
5	520-0114	5	Stud - Rear Bearing Plate (Spec A through C)	30	HEAD, CYLINDER		
6	509-0041	1	Seal, Oil - Rear Bearing Plate		110-1478	1	#1, Left Side
7	101-0316	1	† *Plate, Bearing - Rear (Less Bearing)		110-1479	1	#2, Right Side
8	101-0115	1	† *Gasket Kit - Rear Bearing Plate		110-1505	1	#1, Left Side - Used with Heat Exchanger
9	BEARING, SLEEVE - CRANKSHAFT (INCLUDES THRUST WASHER)				110-1506	1	#2, Right Side - Used with Heat Exchanger
	101-0450	2	† *Standard	31	110-1481	2	Gasket, Cylinder Head
	101-0450-02	2	.002" Undersize	32	110-0639	8	Lock, Valve Stem
	101-0450-10	2	.010" Undersize	33	115-0006	4	Tappet, Valve
	101-0450-20	2	.020" Undersize	34	110-0904	2	Rotocap - Exhaust Valve Spring
	101-0450-30	2	.030" Undersize	35	110-0893	2	Retainer - Intake Valve Spring
10	516-0072	4	† *Pin, Dowel - Bearing Stop	36	110-0539	4	Spring, Valve
11	104-0575	2	† *Washer, Thrust - Bearing	37	110-0902	4	† *Guide, Valve
12	809-0035	1	Screw, Tapping - Round Head (#8 x 3/4")	38	110-0881	2	Valve, Intake - Steel
13	123-0954	1	Cap and Valve, Breather Tube - Begin Spec B	39	110-0880	2	Valve, Exhaust - Chrome Cobalt Alloy
14	123-0958	1	Screen, Breather Cap - Begin Spec B	40	INSERT, VALVE SEAT - EXHAUST		
15	509-0117	1	Gasket, Breather Cap - Begin Spec B		110-0872	2	*Standard
16	123-0951	1	Clamp, Breather Cap - Begin Spec B		110-0872-02	2	.002" Oversize
17	123-0865	1	Filter, Breather Tube		110-0872-05	2	.005" Oversize
18	123-1153	1	Baffle, Breather Tube		110-0872-10	2	.010" Oversize
19	TUBE, BREATHER				110-0872-25	2	.025" Oversize
	123-0868	1	* Spec A Only	41	120-0386	1	† *Tube, Oil
	123-0953	1	† Begin Spec B	42	517-0011	8	† *Plug, Expansion (1-1/4")
20	123-0787	1	Cap, Breather Tube - Spec A Only	43	517-0048	1	† *Plug, Expansion (1-5/8")
21	123-0315	1	Valve Breather Tube - Spec A Only	44	101-0367	2	† *Bearing, Sleeve - Camshaft
22	800-0012	2	Screw, Cap - Hex Head (1/4-20 x 2-1/4")	45	516-0141	2	† *Pin, Dowel - Gear Cover Alignment
23	526-0063	2	Washer, Flat (17/64" ID x 7/16" OD x 1/32" Thk)	46	864-0005	1	Nut, Hex (1/2-13) - Lifting Eye - Spec A through C
				47	403-0580	1	Bolt, Eye (1/2-13 x 5") Spec A through C
				48	403-0832	1	Bracket, Support - Lifting (Spec A through C)

49 110-3136 2 \*† Gasket, Intake Valve guide

\* - Included in 110-2452 Cylinder Block Assembly.  
 † - Included in 110-2553 Cylinder Block Assembly.

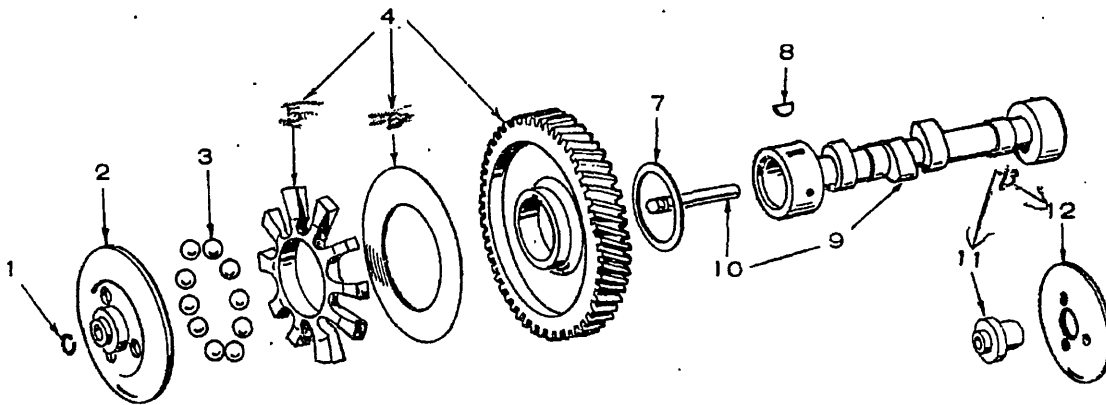
ER 4577  
 50 503-0761 1 Hose, Breather  
 51 502-0769 2 Clamp Breather Hose

## HOUSING



REF. NO.	PART NO.	QTY. USED	PART DESCRIPTION
1	870-0131	1	Nut, Hex - With External Tooth Lockwasher (#10-32)
2	150-0147	1	Stud, Adjusting - Governor
3	150-0731	1	Spring - Governor
4	821-0010	2	Screw, Self-Locking - Hex Head (1/4-20 x 1/2")
5	150-1010	1	Bracket, Adjusting Stud
6	405-1556	1	Panel, Housing - Front
7	508-0136	4	Bumper, Rubber
8	405-1558	1	Panel, Housing - Left Side
9	405-1557	1	Panel, Housing - Right Side

## CAMSHAFT



REF. NO.	PART NO.	QTY. USED	PART DESCRIPTION
1	150-0078	1	Ring, Camshaft Center Pin
2	150-1116	1	Cup, Governor - Spec A through F
3	510-0015	10	Ball, Fly - Governor
4	105-0332	1	Gear, Camshaft (Includes Spacer & Plate)
5	150-1257	1	Spacer, Governor Fly-Ball

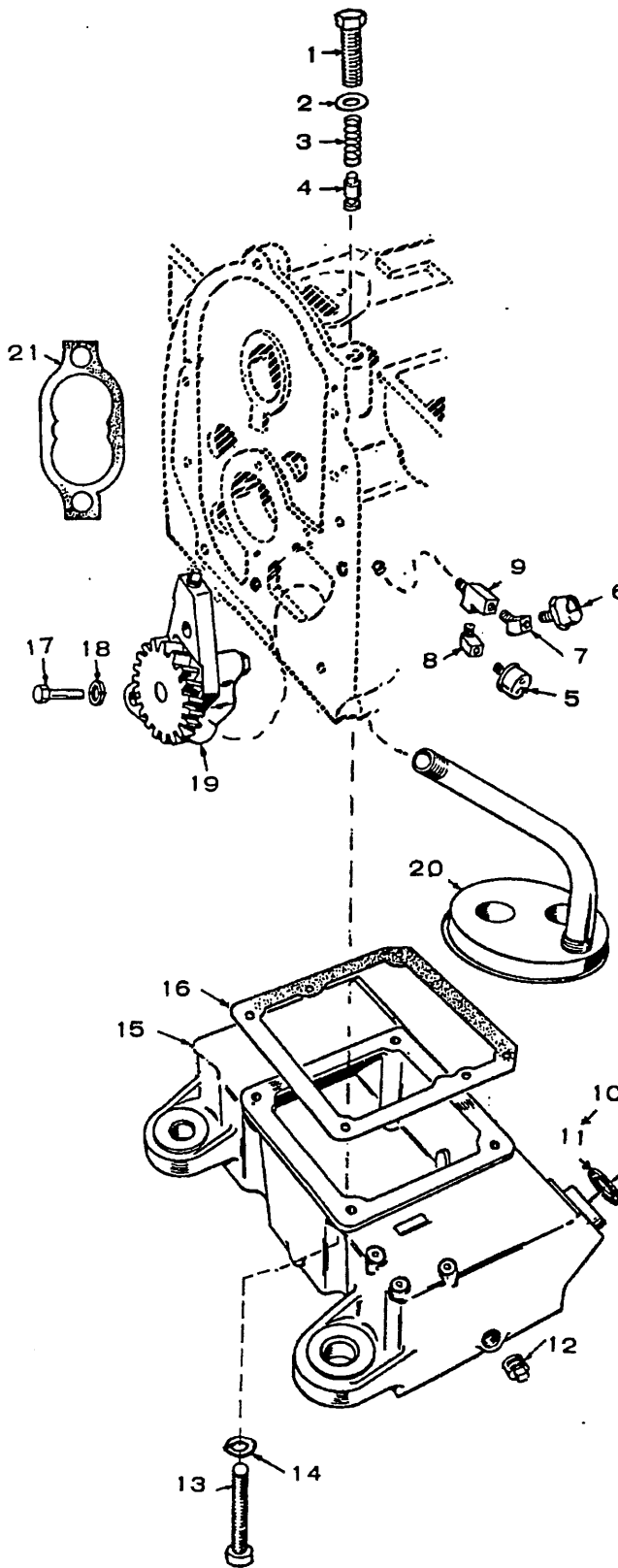
REF. NO.	PART NO.	QTY. USED	PART DESCRIPTION
6	150-0077	1	Plate, Governor Fly-Ball
7	105-0004	1	Washer, Camshaft Gear Thrust
8	515-0001	1	Key, Camshaft Gear Mounting
9	105-0140	1	Camshaft (Includes Center Pin)
10	150-0075	1	Pin, Camshaft Center
11	150-1519	1	Hub, Governor Cup - Begin Spec G
12	150-1520	1	Cup, Governor - Begin Spec G

6

12 150-1695 (Governor Cup Kit (Includes Parts Marked \*))  
 \* - Parts included in 150-1695 Governor Cup Kit.



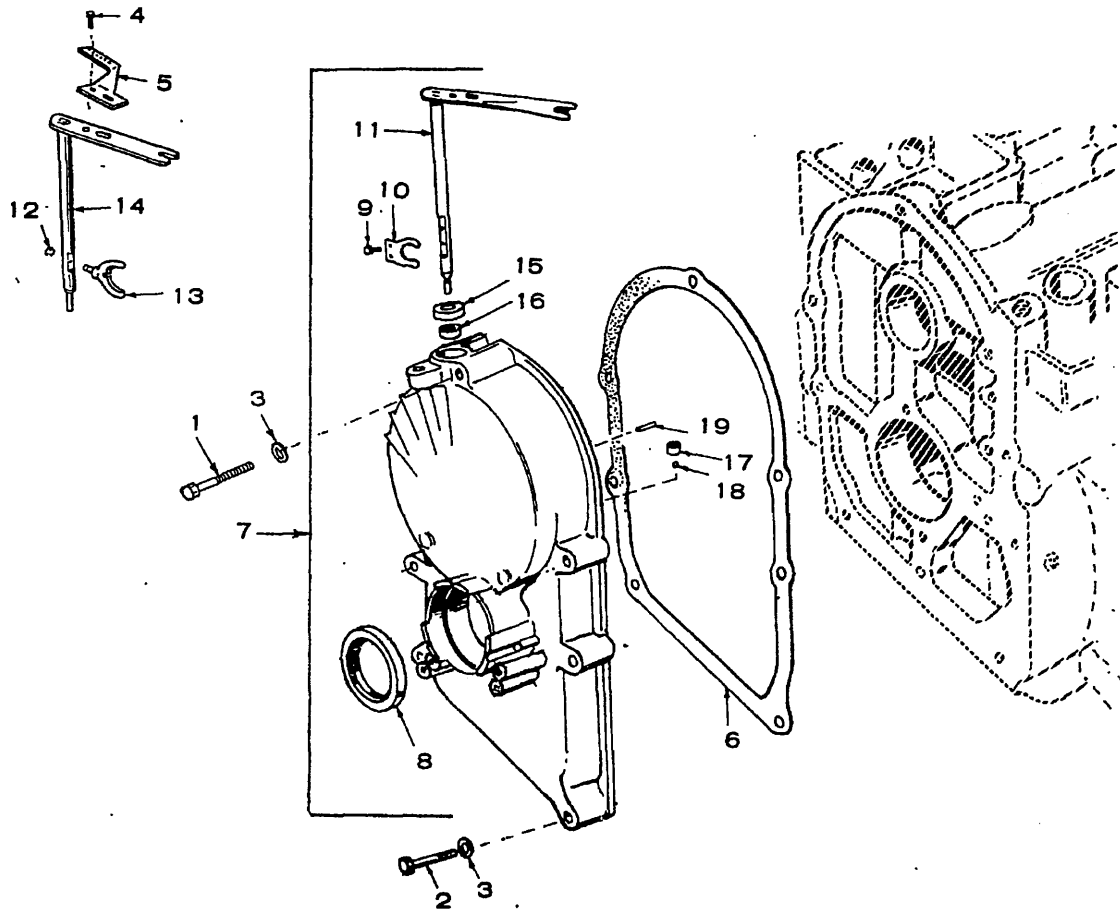
# OIL SYSTEM



REF. NO.	PART NO.	QTY. USED	PART DESCRIPTION
1	801-0048	1	Screw, Cap - Hex Head (3/8-24 x 3/4")
2	526-0066	1	Washer, Flat - Copper (3/8")
3	120-0140	1	Spring, By-Pass Valve
4	120-0398	1	Valve, By-Pass
5	SWITCH, LOW OIL PRESSURE - <i>Auto - (with Con-Tech - Automatic)</i>	1	
	309-0169	1	Spec A through D
	309-0237	1	Spec E & F
	309-0319	1	Begin Spec G
6	193-0006	1	Gauge, Oil Pressure - Spec A through D
7	502-0053	1	Elbow, Pipe - 45° - Spec A through D
8	502-0020	1	Elbow, Pipe - 90° - Spec A through D
9	502-0058	1	Tee, Pipe - Spec A through D
10	123-0489	1	Cap and Indicator, Oil Fill
11	123-0191	1	Gasket - Oil Fill Cap
12	505-0056	1	Plug, Pipe - Square Head (1/2" NPT)
13	102-0455	4	Screw, Cap - Hex Head (Special Hardened, 3/8-16 x 1/4")
14	850-0050	4	Washer, Lock - Spring (3/8")
15	102-0574	1	Base, Oil
16	102-0158	1	Gasket, Oil Base
17	800-0007	2	Screw, Cap - Hex Head (1/4-20 x 1")
18	850-0040	2	Washer, Lock - Spring (1/4")
19	120-0491	1	Pump, Oil
20	120-0400	1	Cup, Oil Intake
21	120-0161	1	Kit, Gasket - Oil Pump

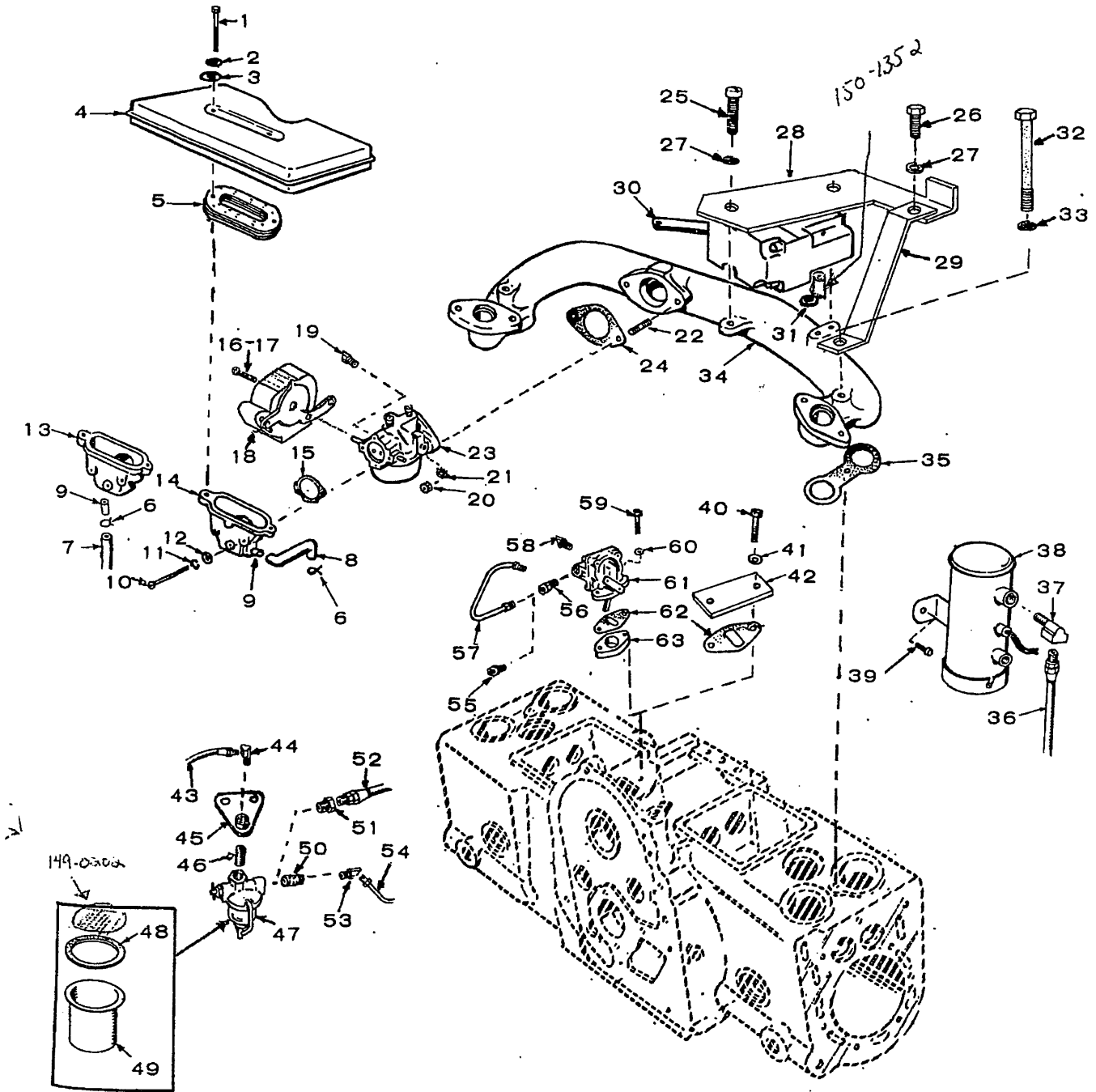
309-0183 1 Set with Con-Tech - Automatic!

# GEARCASE



REF. NO.	PART NO.	QTY. USED	PART DESCRIPTION	REF. NO.	PART NO.	QTY. USED	PART DESCRIPTION
1	800-0034	1	Screw, Cap - Hex Head (5/16-18 x 2-1/4")	9	815-0046	2	Screw, Machine - Pan Head, Cross-Recessed (#8-32 x 3/8") - Begin Spec E
2	800-0032	4	Screw, Cap - Hex Head (5/16-18 x 1-3/4")	10	150-1187	1	Yoke, Governor - Begin Spec E
3	526-0065	5	Washer, Flat - Copper (21/64" ID x 9/16" OD x 1/16" Thk)	11	150-1260	1	Arm and Shaft, Governor - Begin Spec E
4	815-0181	1	Screw, Tapping - Hex Head with External Tooth Lock-washer (#10-32 x 1/2")	12	518-0129	1	Ring, Retaining - Spec A through D
5	EXTENSION, GOVERNOR ARM			13	150-0620	1	Yoke, Governor - Spec A through D
	150-1005	1	Spec A Only	14	150-1008	1	Arm and Shaft, Governor - Spec A through D
	150-1073	1	Begin Spec B	15	509-0008	1	Seal, Oil - Governor Shaft
6	103-0011	1	Gasket, Gearcase	16	510-0013	1	Bearing, Needle
7	GEARCASE ASSEMBLY (Includes the following Components as applicable)			17	510-0008	1	Bearing, Needle
	103-0333	1	Spec A through D	18	510-0014	1	Ball, Bearing
	103-0386	1	Begin Spec E	19	516-0130	1	Pin, Roll - Governor Yoke Stop
8	509-0040	1	Seal, Oil - Crankshaft				

# FUEL SYSTEM



## FUEL SYSTEM

REF. NO.	PART NO.	QTY. USED	PART DESCRIPTION	REF. NO.	PART NO.	QTY. USED	PART DESCRIPTION
1	800-0720	2	Screw, Cap - Hex Head, Cres (1/4-20 x 2-1/4")	38	149-0650	1	*Pump, Fuel - Begin Spec F <i>SPS</i>
2	850-0040	2	Washer, Lock - Spring (1/4)	39	821-0009	2	Screw, Self-locking - Hex Head (1/4-20 x 3/8") - Begin Spec F
3	526-0021	2	Washer, Flat (17/64" ID x 3/4" OD x 1/16" Thk)	40	800-0005	2	Screw, Cap - Hex Head (1/4-20 x 3/4")
4	RESONATOR			41	526-0063	2	Washer, Flat - Copper (1/4)
	140-0830	1	Spec A Only	42	149-0136	1	Cover Plate - Fuel Pump Mounting Hole - Begin Spec F
	140-0974	1	Begin Spec B	43	501-0004	1	Line, Fuel - Flexible - Filter Inlet
5	140-0802	1	Flame Arrestor	44	502-0002	1	Elbow, Pipe (90°) - Spec A through E
6	503-0170	2	Clamp, Hose	45	BRACKET, MOUNTING - FUEL FILTER		
7	503-0486	1	Hose, Breather (Spec A Only)	149-1187	1	Spec C and D	
8	503-0546	1	Hose, Breather (Begin Spec B)	149-1311	1	Spec E Only	
9	123-0893	1	Tube, Breather Hose to Adapter	46	502-0046	1	Nipple, Pipe - Close - Spec C through E (Inlet)
10	813-0108	2	Screw, Machine - Round Head (#10-32 x 1-1/2")	47	149-0282	1	Filter, Fuel - Spec A through E
11	850-0030	2	Washer, Lock - Spring (#10)	48	149-0149	1	Gasket, Filter Bowl - Spec A through E
12	526-0241	2	Washer, Flat (#10)	49	149-0313	1	Bowl, Filter - Spec A through E
13	140-0815	1	Adapter, Resonator - Spec A Only	50	NIPPLE, PIPE - CLOSE (Filter Outlet)		
14	140-0972	1	Adapter, Resonator - Begin Spec B	502-0061	1	Spec A Only	
15	GASKET - ADAPTER TO CARBURETOR			502-0046	1	Spec B Only	
	140-0585	1	Spec A Only	51	502-0003	1	Reducer, Pipe - Spec C with Flexible Lines
	140-0921	1	Begin Spec B	52	LINE, FUEL - FLEXIBLE (Filter to Pump)		
16	815-0226	2	Screw, Machine - Flat Head (#8-32 x 3/8") - Spec A Only	501-0007	1	Spec B Only	
17	815-0161	2	Screw, Machine - Flat Head (#10-32 x 3/8") - Begin Spec B	501-0003	1	Spec C until Metal Line Used	
18	153-0429	1	*Kit, Replacement - Electric Choke	53	502-0065	1	Elbow, Pipe (45°) - Spec C through F with Metal Line
19	502-0065	1	Elbow, Pipe (45°) - Carburetor Inlet	54	LINE, FUEL - METAL (Filter to Pump)		
20	868-0002	2	Nut, Hex (5/16-24)	149-1292	1	Spec C Only	
21	854-0017	2	Washer, Lock - Internal Tooth (5/16)	149-1294	1	Spec D Only	
22	520-0526	2	Stud - Carburetor Mounting	149-1344	1	Spec E Only	
23	*CARBURETOR, GASOLINE - ELECTRIC CHOKE			55	502-0053	1	Elbow, Pipe (45°) - Spec C Only with Flexible Lines; Pump Inlet
	143-0323	1	#Spec A Only (Carter)	56	502-0003	1	Reducer, Pipe - Spec C through E with Metal Line; Pump Inlet
	141-0792	1	Replacement Kit	57	LINE, FUEL - PUMP TO CARBURETOR		
	141-0690	1	Begin Spec B (Zenith) <i>SPS 141-0879</i>	149-1025	1	Spec A Only	
24	141-0281	1	£Gasket, Carburetor Mounting	149-1096	1	Spec B through E	
25	813-0111	2	Screw, Machine - Round Head (#10-32 x 2-1/4")	58	ELBOW, PIPE - PUMP OUTLET		
26	813-0098	1	Screw, Machine - Round Head (#10-32 x 3/8")	502-0002	1	90°, Spec A Only	
27	856-0003	3	Washer, Lock - External/Internal Tooth (#10)	502-0065	1	45°, Spec B through E	
28	166-0561	1	Bracket - Coil and Booster Mounting	806-0009	2	Screw, Cap - Hex Head, Counterbore (1/4-20 x 1-1/4")	
29	166-0571	1	Brace - Coil/Booster Bracket	60	526-0063	2	Washer, Flat - Copper (1/4)
30	150-1030	1	*Vacuum Speed Booster Kit	61	149-1393	1	*Pump, Fuel - Spec A through E <i>SPS</i>
31	150-0425	1	Gasket - Vacuum Booster	62	GASKET		
32	800-0057	2	Screw, Cap - Hex Head (3/8-16 x 2-3/4")	149-0003	2	Spec A through E	
33	850-0050	2	Washer, Lock - Spring (3/8")	149-0003	1	Begin Spec F	
34	MANIFOLD, INTAKE			63	149-0045	1	Spacer, Pump - Spec A through E
	154-1164	1	Spec A through C				
	154-1897	1	Begin Spec D				
35	154-0013	2	Gasket, Manifold				
36	LINE, FUEL - PUMP TO CARBURETOR						
	149-1370	1	Spec F Only				
	149-1580	1	Begin Spec G				
37	502-0002	1	Elbow, Pipe (90°) - Pump Outlet - Begin Spec F				

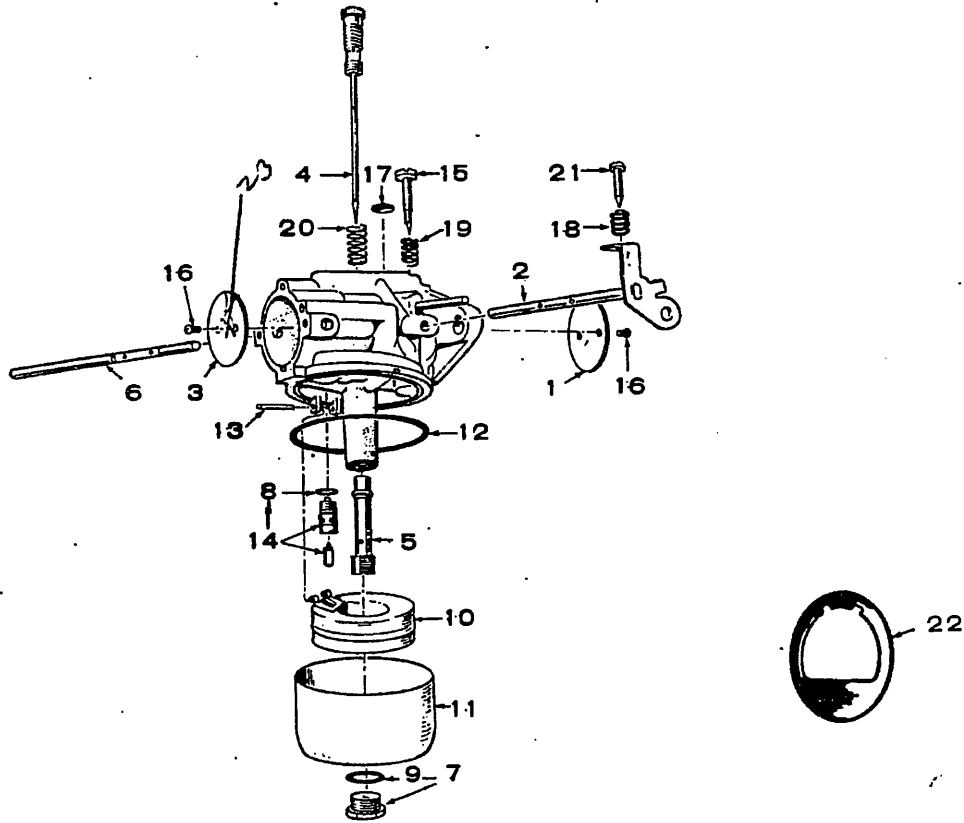
\* - See Separate Group for Component Parts.

# - The Carter Carburetors no longer available. For complete replacement order the applicable kit.

£ - Mounting Gasket supplied with new unit.

*XX - Replacement Kit, Carburetor order 141-0792 - Spec A only*

## CARBURETOR PARTS (CARTER)



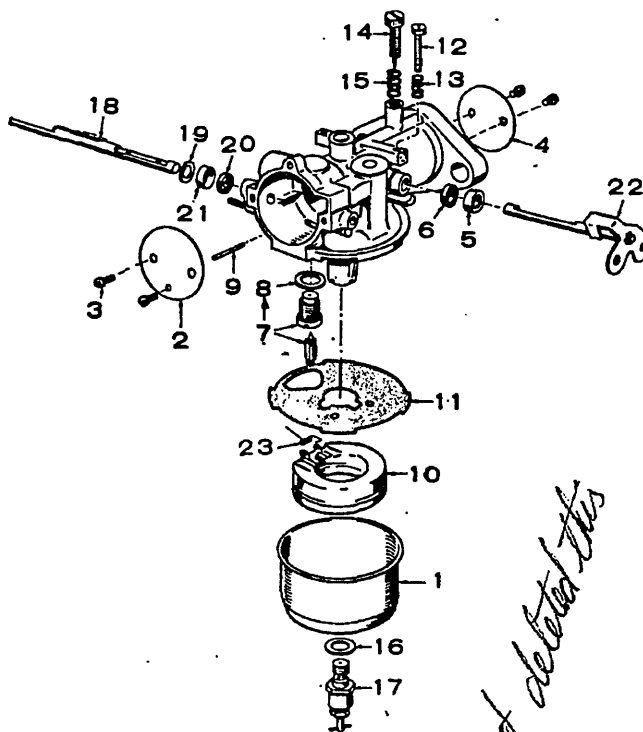
REF. NO.	PART NO.	QTY. USED	PART DESCRIPTION	REF. NO.	PART NO.	QTY. USED	PART DESCRIPTION
	143-0323	1	£ Carburetor, Gasoline	11	143-0210	1	Bowl
	143-0332	1	Repair Kit (Includes Parts Marked #)	12	143-0077	1	*Gasket, Bowl Ring
	143-0201	1	# Gasket Kit (Includes Parts Marked *)	13	141-0703	1	# Pin, Float Lever
	141-0281	1	*Gasket, Carburetor Flange	14	143-0341	1	# Valve, Fuel Inlet <i>fuel inlet</i>
1	143-0202	1	Valve, Throttle	15	143-0213	1	Screw, Idle Adjusting
2	143-0331	1	Shaft and Lever, Throttle	16	812-0014	4	# Screw, #3-48 x 3/16, Choke and Throttle Valve
3	143-0204	1	Valve, Choke	17	143-0110	1	Plug, Expansion
4	143-0330	1	# Needle, Idle Jet and High Speed Adjustment	18	143-0214	1	Spring, Throttle Adjusting Screw
5	143-0329	1	# Nozzle	19	143-0112	1	Spring, Idle Adjusting Screw
6	143-0315	1	Shaft, Choke	20	143-0114	1	Spring, High Speed Adjusting Needle
7	143-0208	1	Screw and Gasket, Bowl	21	143-0215	1	Screw, Throttle Lever Adjusting
8	143-0015	1	*Gasket, Fuel Inlet Valve	22	143-0342	1	Diaphragm
9	143-0209	1	*Gasket, Bowl Screw	23	654-0003	4	# Washer, Lock (if # 3)
10	143-0105	1	Float and Lever				

EP  
3501

\* - Contained in Gasket Kit.  
# - Contained in Repair Kit.  
£ - Mounting Gasket supplied with new unit.

# CARBURETOR PARTS (ZENITH)

*(Family Bendix)*

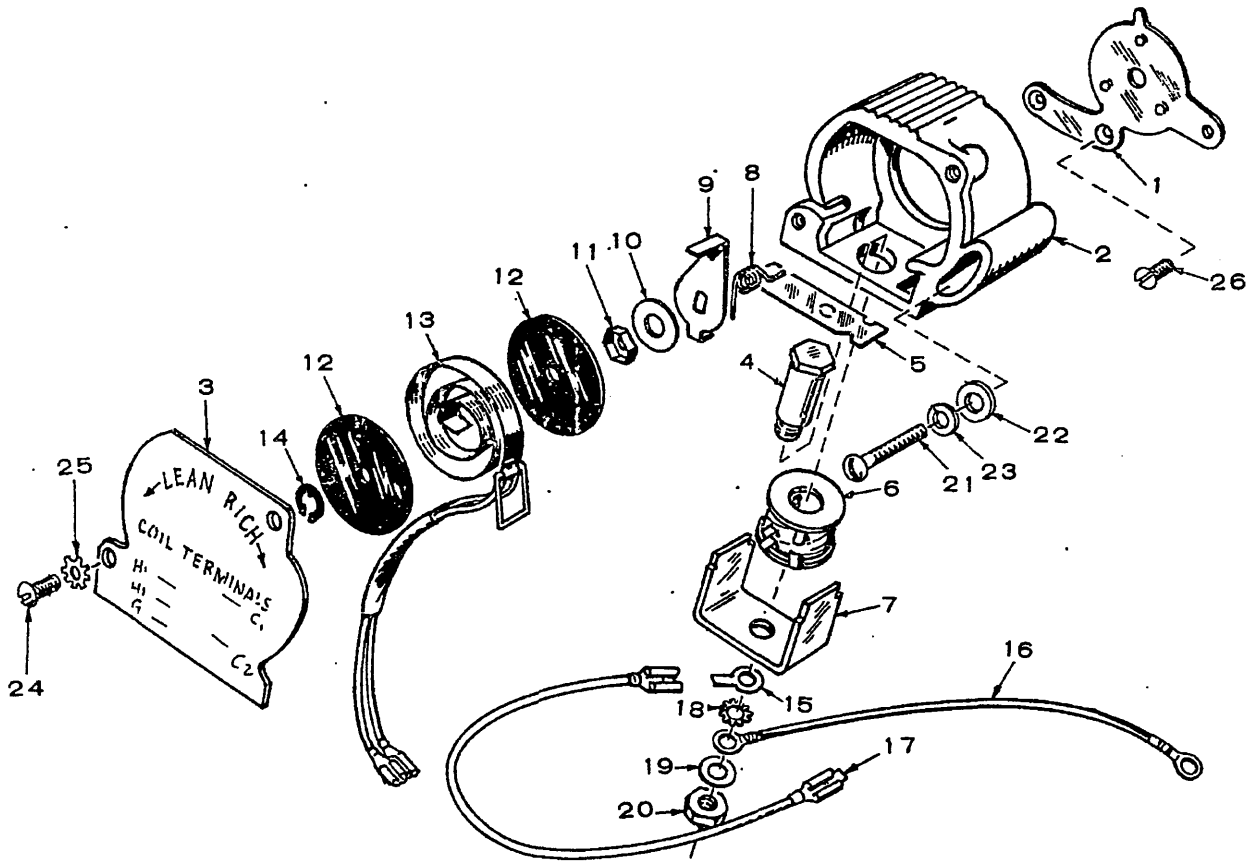


*part deleted this*

REF. NO.	PART NO.	QTY. USED	PART DESCRIPTION	REF. NO.	PART NO.	QTY. USED	PART DESCRIPTION
£	141-0690	1	Carburetor, Gasoline	10	141-0702	1	Float Assembly
	141-0747	1	Repair Kit (Includes Parts Marked *)	11	141-0701	1	# *Gasket, Bowl to Body
	141-0748	1	Gasket Kit (Includes Parts Marked #)	12	141-0700	1	Screw, Throttle Stop
	141-0281	1	# *Gasket, Carburetor Flange	13	141-0711	1	Spring, Throttle Stop
1	141-0708	1	Bowl, Fuel	14	141-0713	1	Needle, Idle Adjusting
2	141-0741	1	Plate, Choke	15	141-0710	1	Spring, Idle Needle
3	141-0698	4	Screw & Washer, Choke & Throttle Plate Mounting	16	141-0077	1	# *Washer, Main Jet Assembly
4	141-0706	1	Plate, Throttle	17	141-0712	1	Jet Assembly, Main (Adjustable)
5	141-0705	1	*Retainer, Seal	18	141-0679	1	Shaft, Choke
6	141-0661	1	# *Seal, Rubber	19	141-0699	1	Washer
7	141-0798-0230	1	*Valve & Seat Assembly, Fuel	20	141-0697	1	# *Seal, Felt
8	141-0811	1	# Washer, Fuel Valve Seat	21	141-0203	1	*Retainer, Felt Seal
9	141-0703	1	*Shaft, Float	22	141-0709	1	Shaft and Lever, Throttle
				23	141-0799	1	*Spring, Float

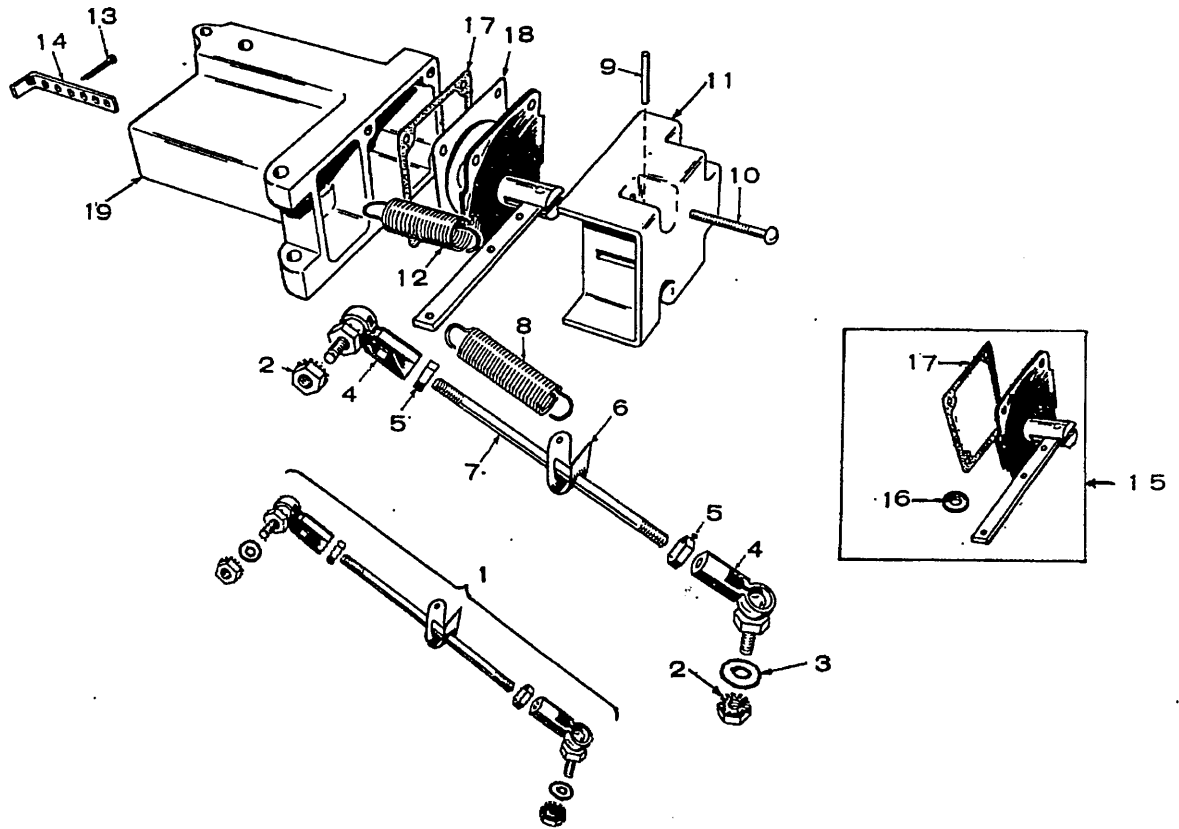
\* - Parts contained in Repair Kit #141-0747;  
 # - Parts contained in Gasket Kit #141-0748;  
 £ - Mounting Gasket supplied with new unit.

## THERMO-MAGNETIC CHOKE



REF. NO.	PART NO.	QTY. USED	PART DESCRIPTION	REF. NO.	PART NO.	QTY. USED	PART DESCRIPTION
1	153-0385	1	Plate, Mounting	19	526-0022	1	Washer, Flat, Steel (5/16")
2	153-0386	1	Housing, Choke	20	864-0002	1	Nut, Hex (5/16-18)
3	153-0389	1	Cover, Choke	21	813-0107	1	Screw, Round Head, Steel (10-32 x 1-1/4")
4	153-0391	1	Core, Solenoid	22	526-0008	1	Washer, Flat, Steel (#10)
5	153-0395	1	Armature, Solenoid	23	850-0030	1	Washer, Lock, Steel (#10)
6	307-1203	1	Coil, Solenoid	24	812-0076	2	Screw, Round Head, Steel (8-32 x 5/16")
7	153-0392	1	Frame, Solenoid	25	854-0007	2	Washer, Lock, Internal Tooth (#8)
8	153-0387	1	Spring, Armature	26	815-0161	2	Screw, Flat Head, Steel (10-32 x 3/8")
9	153-0390	1	Lever, Limit		153-0429	1	Kit, Replacement (Includes Complete Choke, Less Electrical Leads, and Carburetor Air Horn Gaskets)
10	526-0018	1	Washer, Flat, Steel (5/8")				
11	870-0134	1	Pin, Retaining (1/4-20)				
12	153-0399	2	Insulator, Disc				
13	153-0400	1	Bimetal - Heater Assembly				
14	518-0129	1	Ring, Retaining				
15	332-0876	1	Terminal, Lug - Ground				
16	336-1550	1	Lead, Electrical - Ground				
17	336-1549	1	Lead, Electrical - Solenoid				
18	854-0017	1	Washer, Lock, Internal Tooth (5/16)				

## VACUUM SPEED BOOSTER PARTS

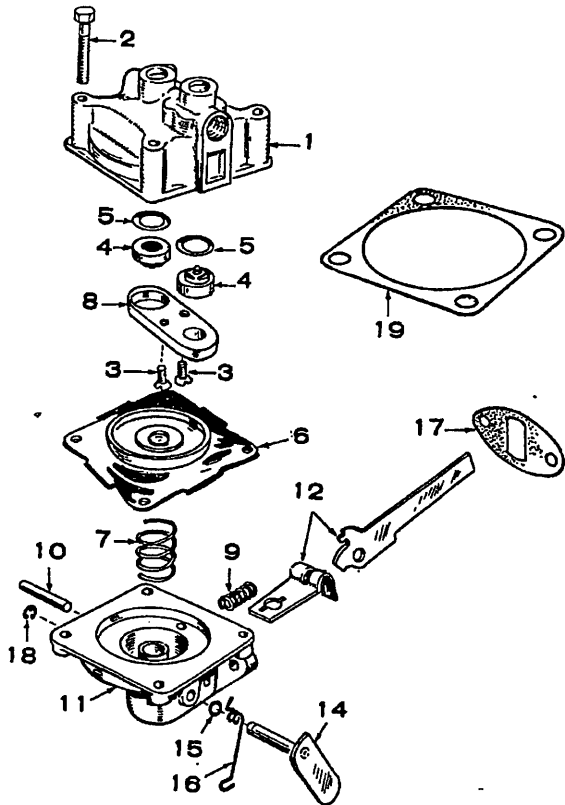


REF. NO.	PART NO.	QTY. USED	PART DESCRIPTION	REF. NO.	PART NO.	QTY. USED	PART DESCRIPTION
	150-1030	1	Kit, Replacement - Vacuum Booster (Includes Parts Marked £)	11	150-0644	1	Cover, Vacuum Booster Housing (Not Sold Separately)
1	150-1080	1	Linkage Assembly (Includes Parts Marked *)	12	150-0475	1	£Spring (Internal)
2	870-0131	2	*Nut, Hex - With External Tooth Lockwasher (#10-32)	13	516-0039	1	£Pin, Cotter (3/32 x 5/8")
3	526-0196	2	*Washer, Flat - Aluminum (7/32" ID x 7/16" OD x 1/8" Thk)	14	150-0376	1	£Bracket, Adjusting - Internal Spring
4	150-0639	2	*Ball Joint - Metal	15	150-1031	1	£Kit, Replacement - Diaphragm and Gaskets (Includes Gaskets - Ref. No. 16 & 17)
5	870-0053	2	*Nut, Hex (#10-32)	16	150-0425	1	Gasket - Booster to Manifold
6	150-0430	1	*Bracket, Spring	17	150-0668	1	Gasket - Diaphragm Plate
7	520-0187	1	*Rod, Linkage	18	150-0666	1	£Plate, Diaphragm
8	150-0471	1	£Spring (External)	19	150-1355	1	Housing, Vacuum Booster (Not Sold Separately)
9	516-0085	1	£Pin, Dowel (3/32 x 3/4")				
10	815-0148	4	£Screw, Machine - Hex Head, Slotted (#8-32 x 7/8")				

£ - Parts Included in Vacuum Booster Replacement Kit.  
 \* - Parts Included in Linkage Assembly.



## FUEL PUMP PARTS

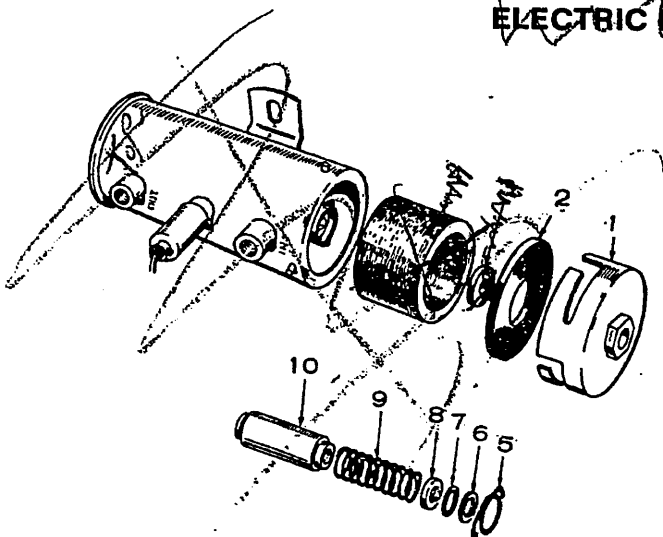


REF. NO.	PART NO.	QTY. USED	PART DESCRIPTION
	149-1393	1	£ Pump, Fuel (Illustrated in Fuel System Group)
	149-0526	1	Repair Parts Kit (Includes Parts Marked *)
1		1	Body, Upper (Not Sold Separately)
2	815-0148	4	Screw (#8-32 x 7/8"), Slotted Hex Head
3	815-0147	2	Screw, Phillips Self Tapping (#6-32 x 5/8") - Valve Retainer
4	149-0096	2	*Valve and Cage
5	149-0095	2	*Gasket, Valve
6	149-0582	1	*Diaphragm Assembly
7	149-0672	1	*Spring
8	149-0539	1	Retainer, Valve Cage
9	149-0675	1	*Spring
10	516-0113	1	Pin, Rocker Arm
11		1	Body, Lower (Not Sold Separately)
12	149-0710	1	Link and Arm, Rocker (Only As a Set)
14	149-1042	1	Lever, Primer
15	509-0065	2	Seal, "O" Ring
16	149-1044	1	Spring, Primer Lever
17	149-0003	1	£ *Gasket, Pump Mounting
18	518-0129	1	Ring, Retainer - Primer Lever
19	149-0858	1	*Gasket, Diaphragm - Lower Side

\* - Included in 149-0526 Repair Kit.

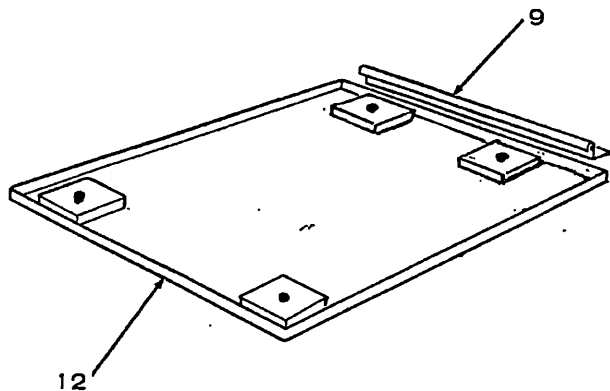
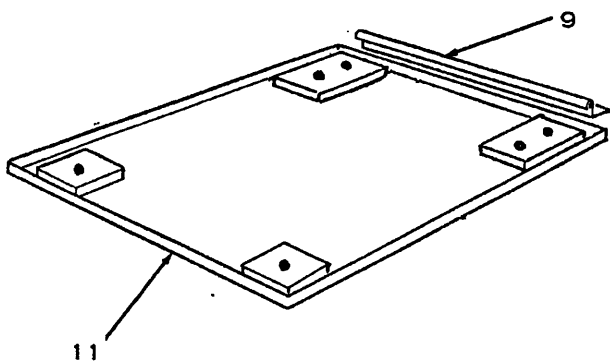
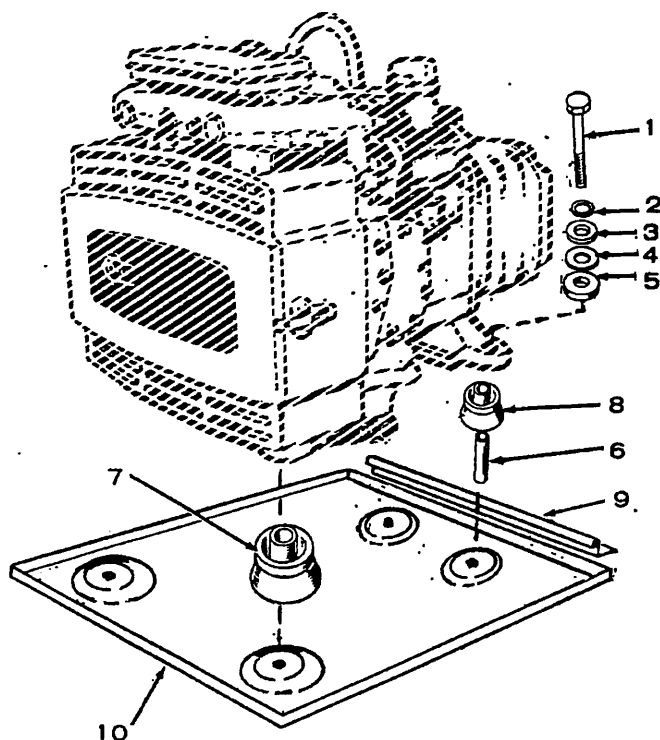
£ - Mounting Gasket supplied with new unit.

## ELECTRIC FUEL PUMP PARTS



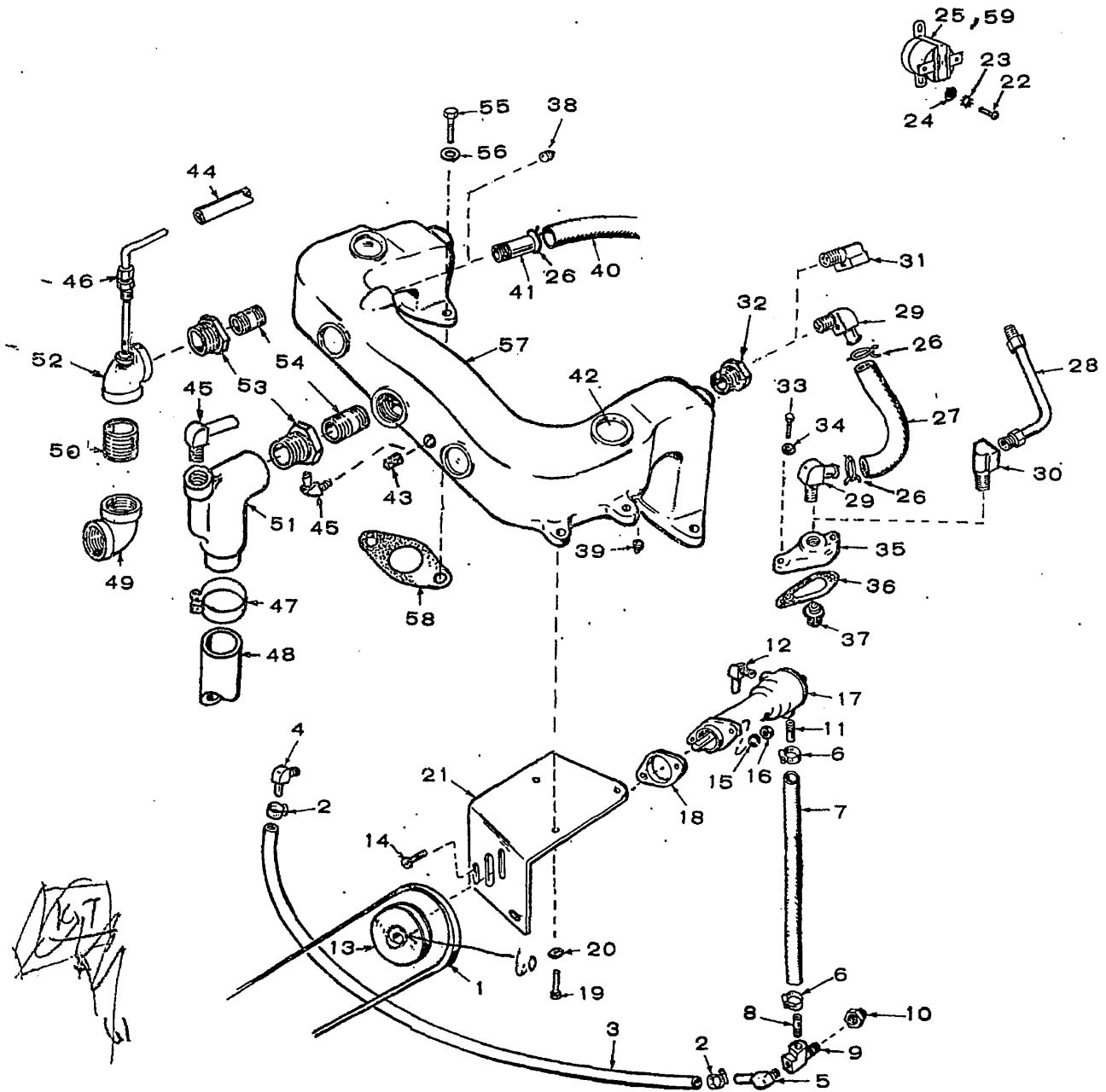
REF. NO.	PART NO.	QTY. USED	PART DESCRIPTION
	149-0650	1	Pump, Fuel
1	149-1453	1	Cover
2	149-1446	1	Gasket, Cover
<del>3</del>	<del>149-1447</del>	<del>1</del>	<del>Magnet</del>
<del>4</del>	<del>149-1445</del>	<del>1</del>	<del>Filter</del>
5	149-1448	1	Retainer, Cup and Plunger
6	149-1449	1	Washer, Cup Gasket
7	149-1450	1	Gasket, Spring Cup
8	149-1451	1	Spring, Cup and Valve
9	149-0767	1	Spring, Plunger Return
10	149-1452	1	Plunger

## DRIP PAN ASSEMBLY



REF. NO.	PART NO.	QTY. USED	PART DESCRIPTION
	402-0360	4	Package, Hardware - Mounting (Includes One each Items marked * & Two of Item 4)
1	800-0081	4	*Screw, Cap - Hex Head (7/16-24 x 3-1/2")
2	850-0055	4	*Washer, Lock - Spring (7/16")
3	526-0128	4	*Washer, Flat (15/32" ID x 1-1/2" OD x 1/4" Thk)
4	526-0198	8	*Washer, Flat (5/8" ID x 1-1/2" OD x 1/16" Thk)
5	402-0282	4	*Snubber, Rubber
6	402-0290	4	*Bushing, Sleeve
7	402-0283	2	Cushion, Vibration - Engine End
8	CUSHION, VIBRATION - GENERATOR END		
	402-0284	2	Key 1, Spec A through C Only
	402-0285	2	Key 2, Spec A through C Only
	402-0284	2	Begin Spec D
9	405-1265	2	Clamp, Hold-down - Drip Pan
10	405-1944	1	Drip Pan - Begin Spec E
11	405-1869	1	Drip Pan - Spec D Only
12	405-1554	1	Drip Pan - Spec A through C Only

# EXHAUST MANIFOLD AND WATER PUMP



## EXHAUST MANIFOLD AND WATER PUMP

REF. NO.	PART NO.	QTY. USED	PART DESCRIPTION	REF. NO.	PART NO.	QTY. USED	PART DESCRIPTION
1	511-0073	1	Belt, Drive - Water Pump (6 Hz 1st)	33	800-0007	4	Screw, Cap - Hex Head (1/4-20 x 1")
2	503-0183	2	Clamp, Hose	34	850-0040	4	Washer, Lock - Spring (1/4) - Spec A Through D
3	503-0433	1	Hose, Rubber (17")	35	309-0185	2	Housing, Thermostat
4	502-0302	1	Elbow, Hose (90°)	36	309-0186	2	Gasket, Thermostat Housing (part kit)
5	502-0304	1	Elbow, Hose (90°)	37	309-0130	2	Thermostat
6	503-0183	2	Clamp, Hose	38	505-0054	1	Plug, Pipe 1/4" (Used on Models without Heat Exchanger)
7	503-0487	1	Hose, Rubber (4-3/8")	39	502-0080	1	Plug, Pipe - 1/8
8	502-0256	1	Nipple, Pipe - Close	40	503-0459	1	Hose, Rubber - (Heat Exchanger Models Only)
9	502-0164	1	Tee, Pipe	41	502-0256	1	Nipple, Pipe - Half (Heat Exchanger Model Only)
10	502-0050	1	Reducer, Pipe	42	517-0041	4	Plug, Expansion
11	502-0256	1	Nipple, Pipe - Close	43	505-0110	1	Plug, Pipe - 3/8
12	502-0304	1	Elbow, Hose (90°)	44	503-0700	1	Hose, Rubber
13	512-0020 34	1	Pulley - Water Pump (1 1/2" 5/8" screw 803-0062)	45	502-0237	2	† Elbow, Hose - Brass (Current Models)
14	816-0090	2	Bolt, Carriage - Grade 1, Plated (1/4-20 x 1-1/4")	46	154-0894	1	Tube, Water - (Early Models)
15	850-0040	2	Washer, Lock - Spring (1/4)	47	503-0365	2	† Clamp, Hose (Current Models)
16	862-0001	2	Nut, Hex (1/4-20)	48	503-0575	1	† Hose, Exhaust (Current Models)
17	131-0165	1	* Pump, Water	49	505-0493	1	Elbow, Pipe - Exhaust (Early Models)
18	131-0173	1	Spacer - Pump Mounting	50	505-0625	1	Nipple, Pipe - Exhaust (Early Models)
19	821-0011	3	Screw, Self-Locking - Hex Head (1/4-20 x 7/8")	51	155-1058	1	† Elbow, Pipe - With Tapped Port (Current Models)
20	850-0040	3	Washer, Lock - Spring (1/4)	52	505-0485	1	Elbow, Pipe - With Tapped Port (Early Models)
21	131-0171	1	Bracket, Mounting - Water Pump	53	505-0617	1	† Reducer, Pipe
22	812-0145	2	Screw, Machine - Round Head (1/4-20 x 5/16")	54	505-0024 34	1	† Nipple, Pipe - SPECIAL
23	854-0014	2	Washer, Lock - Internal Tooth (1/4)	55	800-0029	4	Screw, Cap - Hex Head (.5/16-18 x 1-1/8")
24	526-0016	2	Washer, Flat (17/64" ID x 9/16" OD x 1/32" Thk) (part kit)	56	850-0045	4	Washer, Lock (5/16)
25	309-0259	1	Switch, Thermostat - Hi Temp Cut-Off - Spec A through F	57	154-0983	1	Manifold, Exhaust
26	503-0547	5	Clamp, Hose (Current Models)	58	154-0973	2	Gasket - Exhaust Manifold
27	503-0638	2	Hose, Rubber (Current Models)	59	309-0320	1	Switch, Thermostat - Hi Temp Cut-Off - Begin Spec G
28	130-0643	2	Line, Water (Early Models)	60	803-0062	1	Screw, Set - Socket (5/16-18 10/16)
29	502-0237	4	Elbow, Hose - Brass (Current Models)				
30	502-0073	2	Elbow, Pipe (90°) (Early Models)				
31	502-0074	2	Elbow, Pipe (90°) - (Early Models)				
32	502-0297	2	Reducer, Pipe - Brass (Current Models)				

\* - See Separate Group for Component Parts.

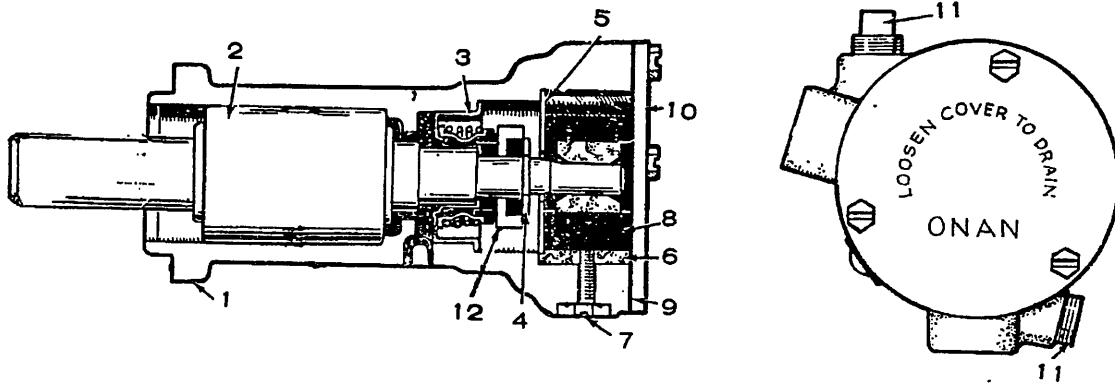
† - Parts Included in Package 154-1328

1 511-0057 1 Bolt (50 Hz Part) [6x 12235 5/11/87 69B]

#307  
MACK  
927-0221  
Spec A-6  
Page 19 of #28  
S/B 130-0643

6) 512-0166  
K.T. Bentley (checked)  
Pulley 517-12, S. & L. [unclear]  
803-0062  
usage ?

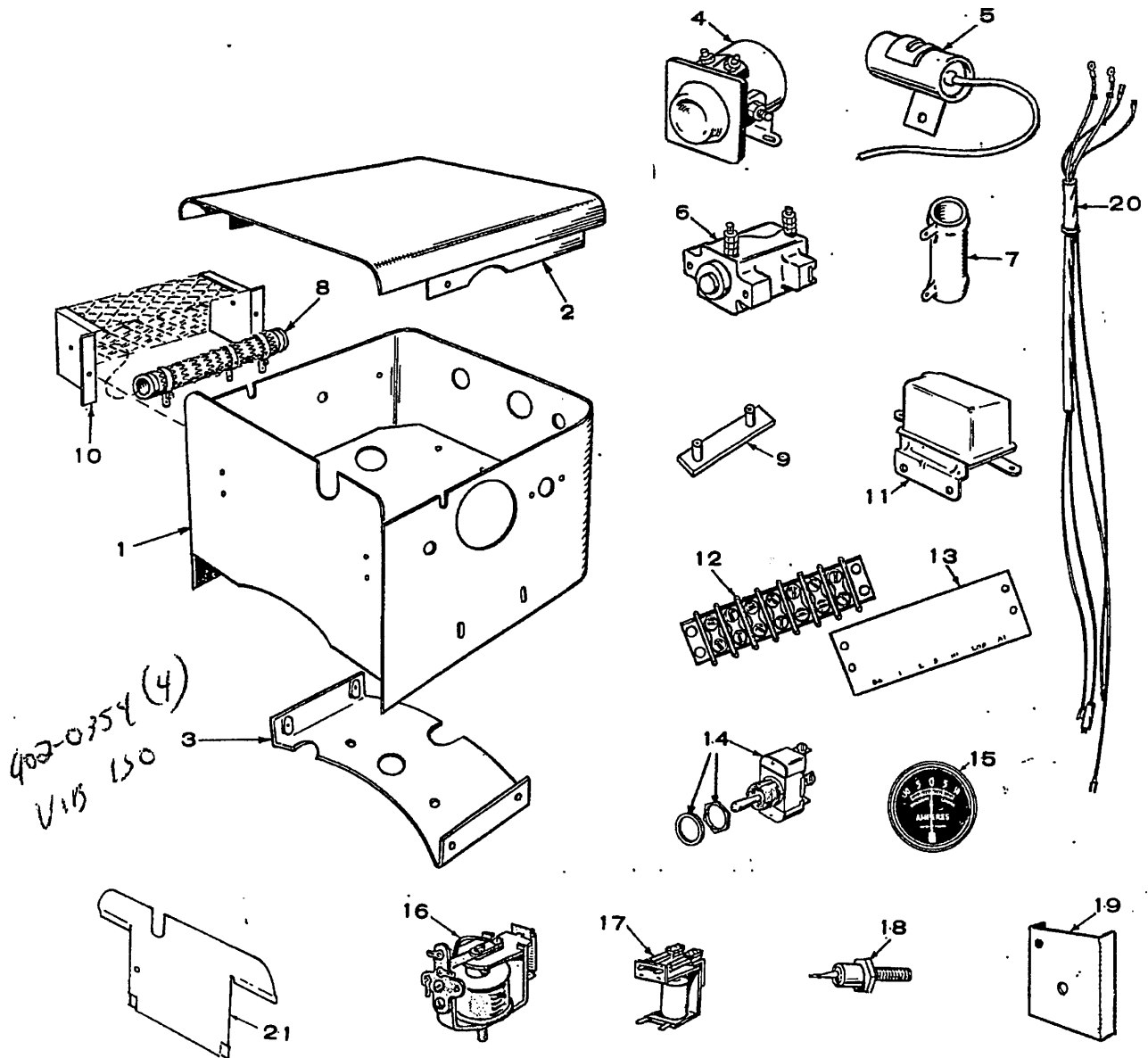
## WATER PUMP PARTS



**NOTE:** This pump used on sets without heat exchanger only.

REF. NO.	PART NO.	QTY. USED	PART DESCRIPTION	REF. NO.	PART NO.	QTY. USED	PART DESCRIPTION
	131-0165	1	Pump, Water	7	815-0283	4	Screw, Brass (1) *Cam Mounting (3) Cover Mounting
	131-0179	1	Kit, Repair (Includes Parts Marked *)	8	131-0160	1	*Impeller
1		1	Body (Not Sold Separately)	9	131-0161	1	*Gasket, Cover
2	131-0269	1	Bearing and Shaft Assembly	10	131-0162	1	*Cover
3	131-0169 <i>SPS</i>	1	*Seal Assembly <i>131-0157</i>	11	502-0080	2	Plug, Pipe
4	518-0221	1	*Retaining Ring	12	131-0202 <i>SPS</i>	1	*Seat, Seal <i>131-0157</i>
5	131-0158	1	*Wear Plate, Rear				* - Included in the 131-0179 Repair Kit.
6	131-0159	1	*Cam				

## CONTROL - SPEC A THROUGH C ONLY



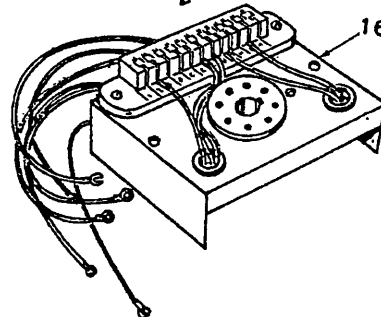
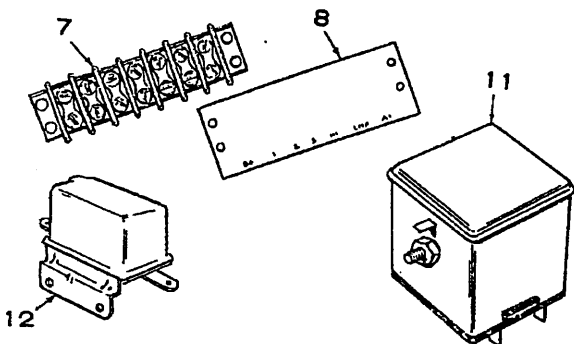
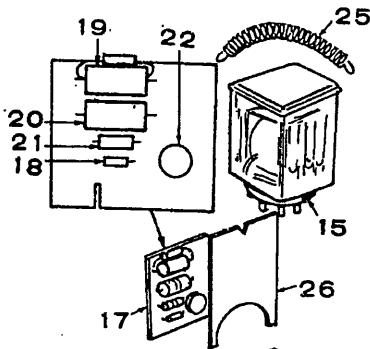
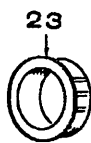
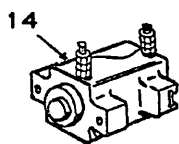
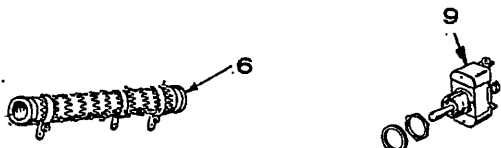
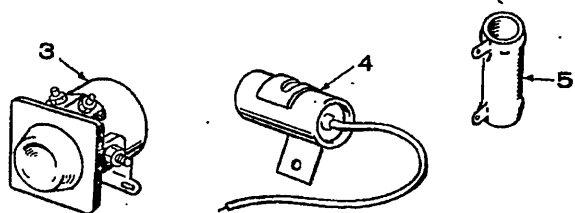
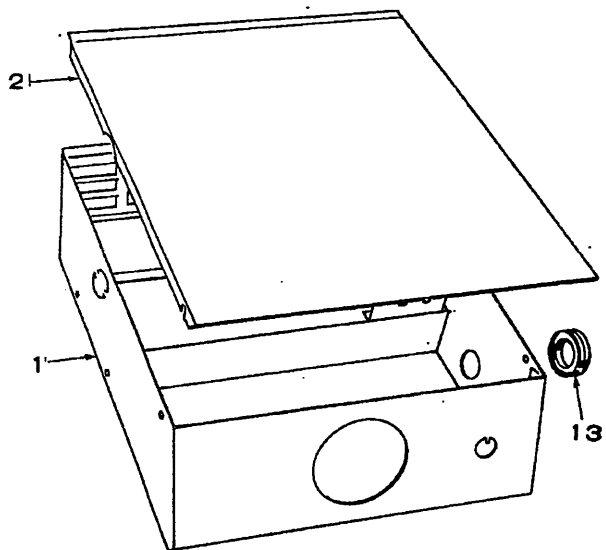
REF. NO.	PART NO.	QTY. USED	PART DESCRIPTION
1	301-2525	1	Box, Control
2	301-1244	1	Cover, Control Box
3	301-2532	1	Bracket, Control Box Mounting
4	307-0845	1	Solenoid, Start
5	312-0057	1	Condenser (1.0 Mfd.) Start Solenoid Support
6	320-0104	1	Relay, Emergency
7	RESISTOR, FIXED		
	304-0060	1	1.72-Ohm, 25 Watt
	304-0217	1	1.-Ohm, 10 Watt
	304-0251	1	30-Ohm, 5 Watt
8	304-0483	1	Resistor, Adjusting (Mounts Outside Control Box)
9	304-0610	1	Support, Adjusting Resistor

REF. NO.	PART NO.	QTY. USED	PART DESCRIPTION
10	301-2528	1	Box, Resistor Mounting
11	305-0383	1	Regulator, Two-step Voltage - Charge Circuit
12	332-0745	1	Block, Terminal Remote Control
13	332-0922	1	Strip, Marker (B+, 1, 2, 3, H1, LOP, A1)
14	308-0154	1	Switch, Start-Stop
15	302-0058	1	Ammeter, Charge
16	307-0253	1	Relay, Stop
17	307-0642	1	Relay, Start Disconnect
18	305-0235	1	Rectifier
19	305-0254	1	Sink, Heat (Rectifier Mounting Bracket)
20	338-0334	1	Harness, Wiring
21	301-2597	1	Plate, End - Control Box

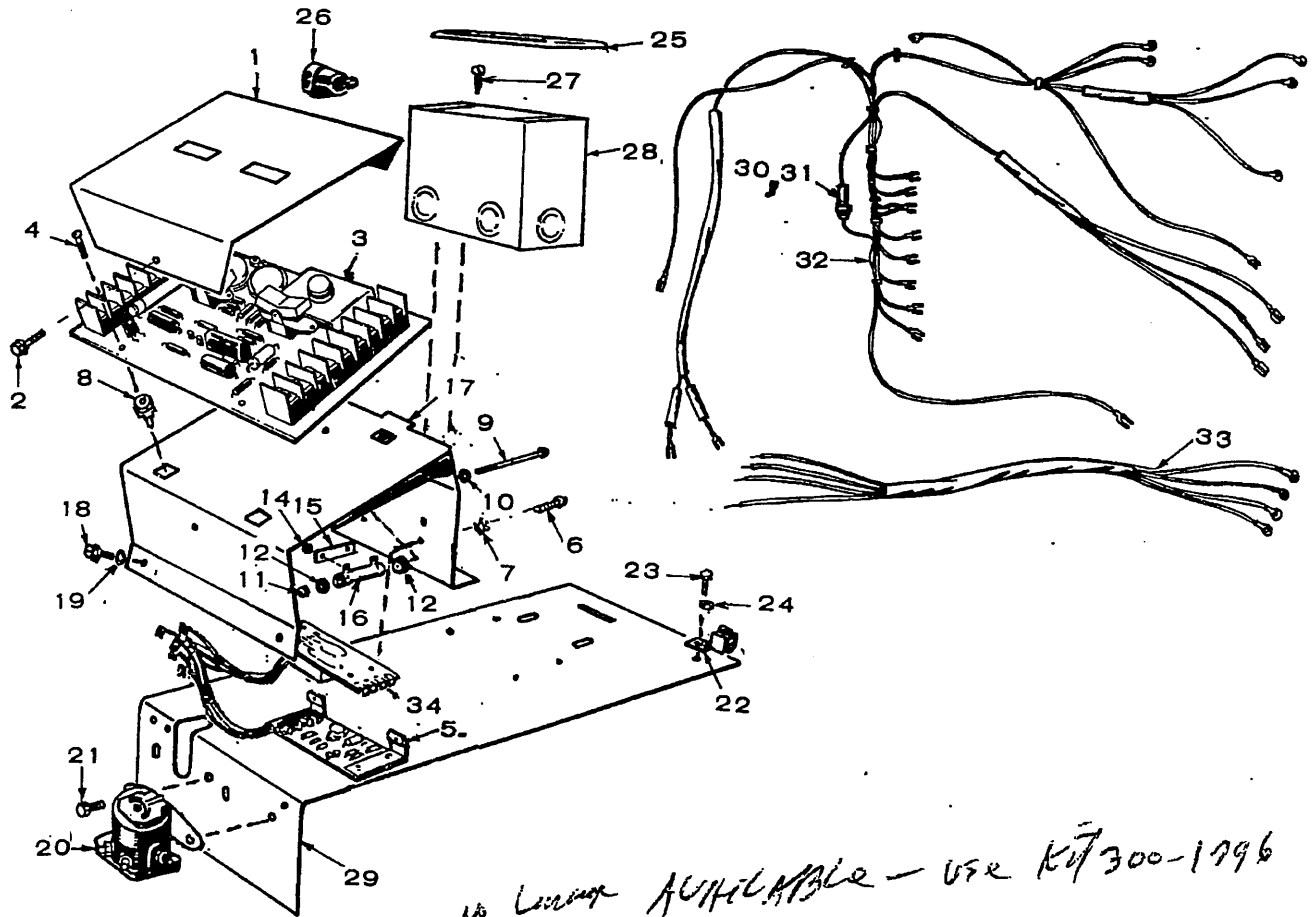
# CONTROL - SPEC D ONLY

REF. NO.	PART NO.	QTY. USED	PART DESCRIPTION
1	301-3319	1	Box, Control
2	301-3302	1	Cover, Control Box
3	307-0845	1	Solenoid, Start
4	312-0057	1	Condenser (1.0 Mfd.) Start Solenoid Suppression
5	RESISTOR, FIXED		
	353-0006	1	6-Ohm, 50 Watt
	304-0251	1	30-Ohm, 5 Watt
	304-0060	1	1.72-Ohm, 25 Watt
	304-0217	1	1.0-Ohm, 10 Watt
6	304-0632	1	Resistor, Adjusting (6-Ohm, 100 Watt)
7	332-0745	1	Block, Terminal Remote Control
8	332-0922	1	Strip, Marker
9	308-0154	1	Switch, Start-Stop
10	302-0058	1	Ammeter, Charge (10-0-10)
11	307-1052	1	Relay, Stop
12	305-0383	1	Relay, Voltage Regulator
13	GROMMET		
	508-0001	1	For 1-1/16" Hole
	508-0160	1	For 1/2" Hole
14	320-0104	1	Relay, Emergency
15	307-1070	1	Relay, Start Disconnect
16	323-0803	1	Socket, Assembly, Relay
17	300-0734	1	Amplifier Assembly, Start Disconnect (Includes Parts Marked *)
18	359-0028	1	*Diode, Zener
19	350-0979	1	*Resistor, 470-Ohm, 2 Watt
20	350-0985	1	*Resistor, 820-Ohm, 2 Watt
21	350-0397	1	*Resistor, 2700-Ohm, 1/2 Watt
22	362-0010	1	*Transistor
23	331-0088	2	Bushing (Nylon)
25	301-3306	1	Spring, Relay Holddown
26	301-3307	1	Spacer, Relay to Amplifier
27	338-0616	1	Harness, Wiring

\* - Included in 300-0734 Amplifier Assembly.



## CONTROL - SPEC E & F ONLY



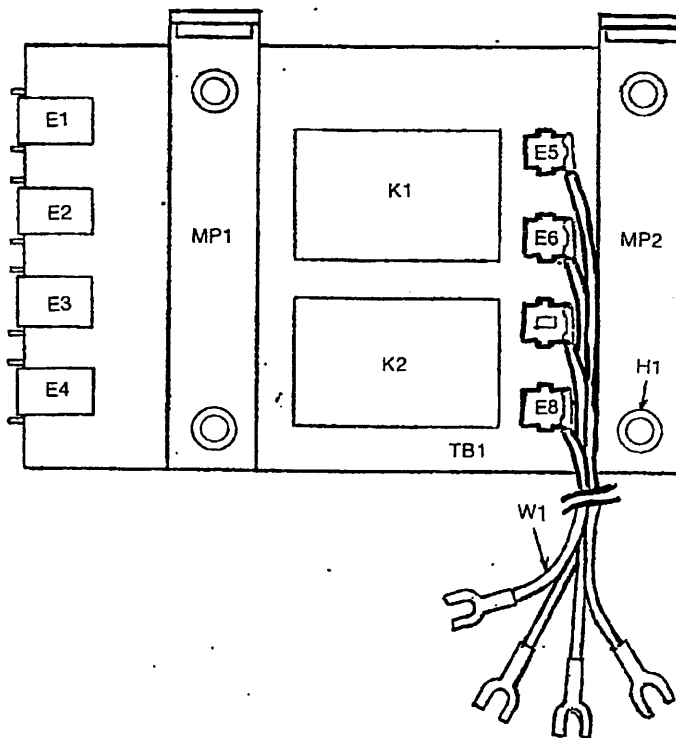
REF. NO.	PART NO.	QTY. USED	PART DESCRIPTION	REF. NO.	PART NO.	QTY. USED	PART DESCRIPTION
1	301-3484	1	Cover, Control	19	856-0003	4	Washer, Lock - External/Internal Tooth (#10)
2	815-0350	3	Screw, Tapping - Hex Washer Head, Slotted (#10-32 x 3/8")	20	307-1166	1	Solenoid, Start
3	300-0859 <del>300-0858</del>	1	*Control Assembly (See Separate Group for Components)	21	821-0010	2	Screw, Self-Locking - Hex Head (1/4-20 x 1/2")
4	815-0365	4	Screw, Tapping - Round Head, Cross-recessed (#8-3/4")	22	332-0142	1	Terminal, Lug
5	300-0935	1	*Control, Start Adapter	23	821-0010	1	Screw, Self-Locking - Hex Head (1/4-20 x 1/2")
6	812-0077	4	Screw, Machine - Round Head (#8-32 x 3/8")	24	856-0006	1	Washer, Lock - External/Internal Tooth (1/4)
7	853-0005	4	Washer, Lock - External Tooth (#8)	25	330-0004	1	Cover, Outlet Box
8	870-0263	4	Nut, Panel - Insulating	26	508-0179	1	Grommet
9	813-0112	1	Screw, Machine - Round Head (#10-32 x 2-1/4")	27	815-0350	2	Screw, Tapping - Hex Washer Head, Slotted (#10-32 x 3/8")
10	526-0179	1	Washer, Flat (7/32" ID x 5/8" OD x 1/16" Thk)	28	330-0074	1	Box, Outlet
11	870-0131	1	Nut, Hex with External Tooth Lockwasher (#10-32)	29	£	1	Panel, Mounting - Control
12	304-0014	2	Washer, Centering - Resistor	30	321-0194	1	Fuse, Cartridge - 9 Amps
13	815-0201	2	Screw, Machine - Round Head, Brass - With External Tooth Lockwasher (#8-32 x 3/8")	31	321-0193	1	Fuseholder
14	853-0005	2	Nut, Hex - Brass (#8-32)	32	338-0712	1	Harness, Wiring - Engine Control
15	304-0610	1	Bar, Support - Resistor	33	338-0642	1	Harness, Wiring - Start Control
16	304-0060	1	Resistor, Fixed, Wirewound (1.72 Ohm, 25 Watt)	34	300-1227	1	*Control, Disconnect Adapter
17	301-3481	1	Bracket, Mounting - Control				
18	815-0350	4	Screw, Tapping - Hex Washer Head, Slotted (#10-32 x 3/8")				

\* - See Separate Group for Components.  
 £ - Order by description, giving complete Model, Spec and Serial Number from nameplate.



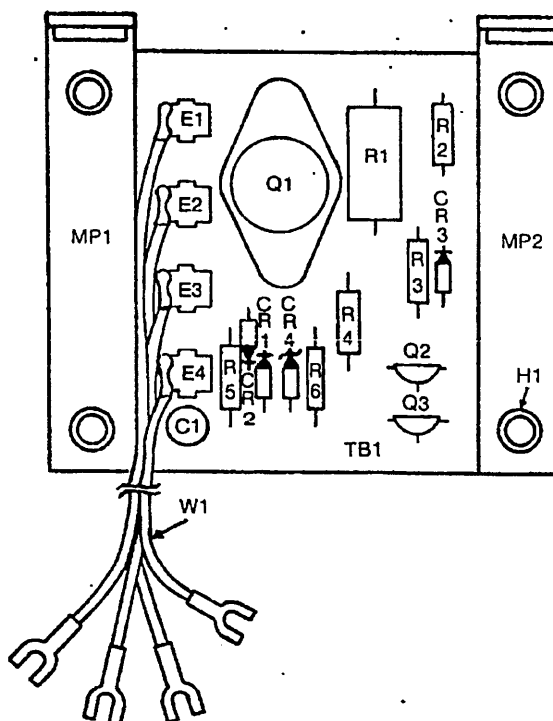
## START ADAPTER CONTROL

REF. NO.	PART NO.	QTY. USED	PART DESCRIPTION
	300-0935		Control, Start Adapter
E1-4	332-1511	4	Terminal, Lug
E5-8	332-1489	4	Terminal, Lug
H1	818-0005	4	Rivet, Blind
K1	307-1185	1	Relay, Armature
K2	307-1185	1	Relay, Armature
MP1	332-1656	1	Bracket, Mounting
MP2	332-1656	1	Bracket, Mounting
TB1	332-1491	1	Printed Wiring Board
W1	338-0680	1	Wiring Harness

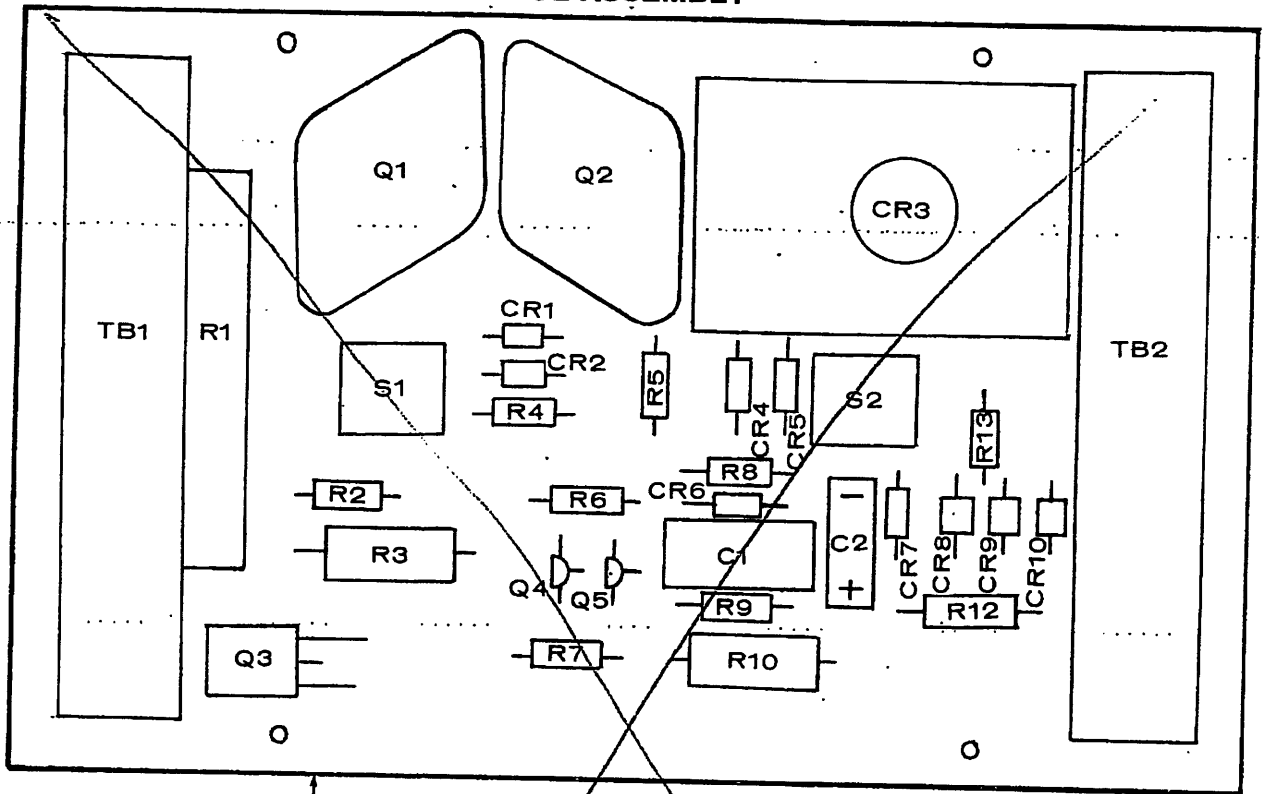


## DISCONNECT ADAPTER CONTROL

REF. NO.	PART NO.	QTY. USED	PART DESCRIPTION
	300-1227	1	Control, Disconnect Adapter
C1	356-0059	1	Capacitor, 2.2 Mfd 20% 35 vdc
CR1	357-0004	1	Rectifier
CR2	357-0004	1	Rectifier
CR3	357-0004	1	Rectifier
CR4	359-0036	1	Diode
E1-4	332-1511	4	Terminal, Lug
H1	818-0005	4	Rivet, Blind
MP1	332-1656	1	Bracket, Mounting
MP2	332-1656	1	Bracket, Mounting
Q1	362-0035	1	Transistor
Q2	362-0011	1	Transistor
Q3	362-0011	1	Transistor
R1	350-1124	1	Resistor 100-Ohm, 2 Watt, 10%
R2	350-0536	1	Resistor 1000-Ohm, 1/2 Watt, 10%
R3	350-0527	1	Resistor 180-Ohm, 1/2 Watt, 10%
R4	350-0396	1	Resistor 2400-Ohm, 1/2 Watt, 5%
R5	350-0398	1	Resistor 3000-Ohm, 1/2 Watt, 5%
R6	350-0411	1	Resistor 10,000-Ohm, 1/2 Watt, 5%
TB1	332-1833	1	Printed Wiring Board
W1	338-0935	1	Wiring Harness



# CONTROL ASSEMBLY

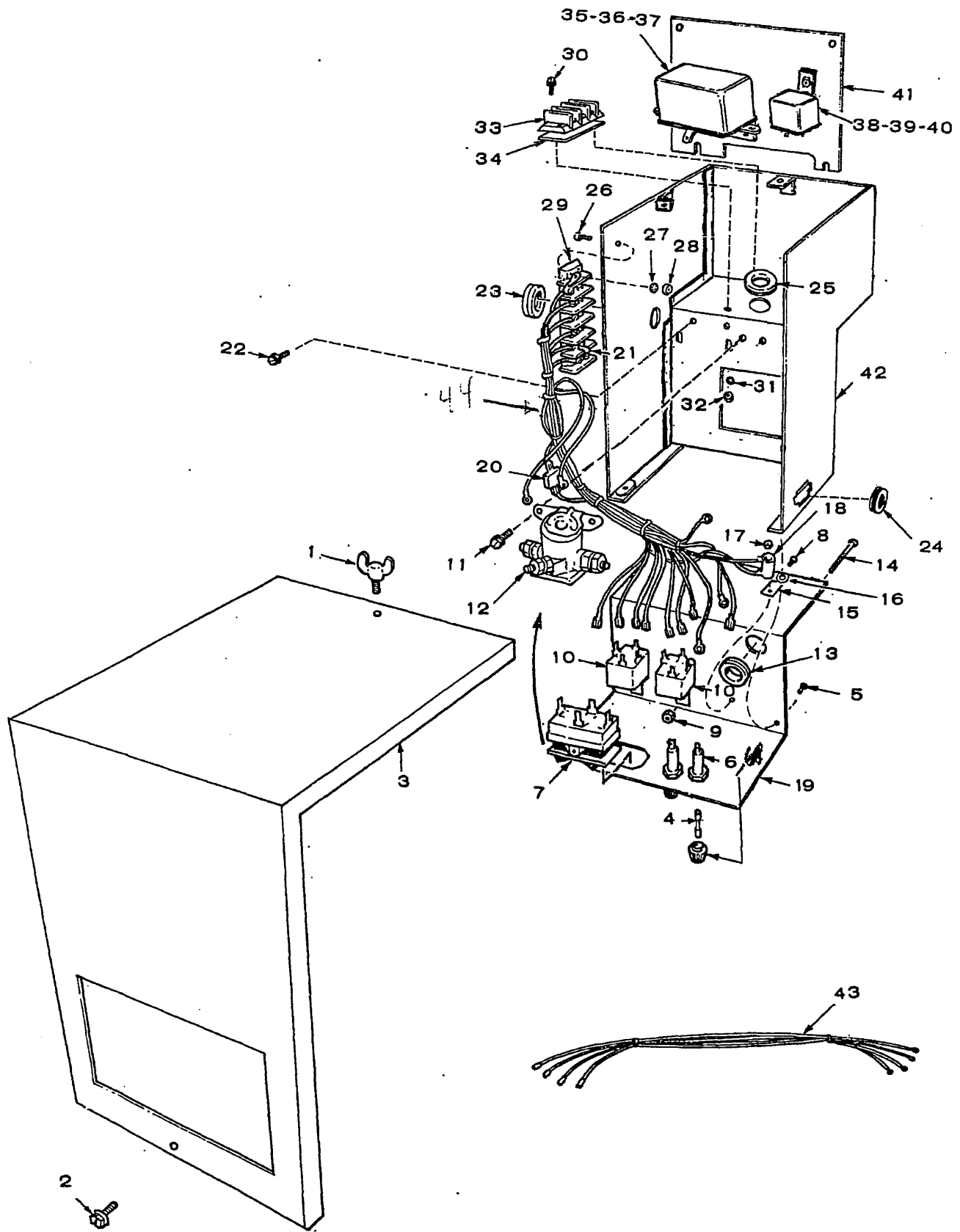


*See PARTS  
Catalog # 900-0234*

*Discontinued  
See PSB 327A  
USC 302-1746 per SPS*

REF. NO.	PART NO.	QTY. USED	PART DESCRIPTION	REF. NO.	PART NO.	QTY. USED	PART DESCRIPTION
A1	300-0859	1	Control Assembly	A1R1	353-0043	1	Resistor - 35-Ohm, 10 Watt
A1C1	355-0026	1	Capacitor, .47 Mfd.	A1R2	350-0437	1	Resistor - 120K-Ohm, 1/2 W, 5%
A1C2	356-0046	1	Capacitor, Electrolytic - 5 Mfd.	A1R3	350-0977	1	Resistor - 390-Ohm, 2 W, 5%
A1CR1	357-0013	1	Rectifier	A1R4	350-0427	1	Resistor - 47K-Ohm, 1/2 W, 5%
A1CR2	357-0013	1	Rectifier	A1R5	350-0404	1	Resistor - 5.1K-Ohm, 1/2 W, 5%
A1CR3	358-0054	1	Diode and Heat Sink	A1R6	350-0315	1	Resistor - 1-Ohm, 1/2 W, 5%
A1CR4	357-0004	1	Rectifier	A1R7	350-0355	1	Resistor - 47-Ohm, 1/2 W, 5%
A1CR5	357-0004	1	Rectifier	A1R8	350-0379	1	Resistor - 470-Ohm, 1/2 W, 5%
A1CR6	357-0004	1	Rectifier	A1R9	350-0530	1	Resistor - 330-Ohm, 1/2 W, 5%
A1CR7	359-0026	1	Diode	A1R10	350-0983	1	Resistor - 680-Ohm, 2 W, 5%
A1CR8	357-0017	1	Rectifier	A1R12	350-0673	1	Resistor - 270-Ohm, 1 W, 5%
A1CR9	357-0017	1	Rectifier	A1R13	350-0404	1	Resistor - 5.1K-Ohm, 1/2 W, 5%
A1CR10	357-0013	1	Rectifier	A1S1	308-0323	1	Switch - Double Pole, Double Throw
A1Q1	362-0018	1	Transistor	A1S2	308-0320	1	Switch - Double Pole, Double Throw
A1Q2	362-0033	1	Transistor	A1TB1	332-1450	1	Terminal Block
A1Q3	362-0028	1	Transistor	A1TB2	332-1450	1	Terminal Block
A1Q4	362-0011	1	Transistor	1	332-1454	1	Printed Wiring Board
A1Q5	362-0011	1	Transistor	2	308-0378	1	Rocker and Spring (Replaceable part of switch AISI)

# CONTROL - ~~DATA~~ SPEC G



Spec G  
 611-1142-01  
 300-1645

*[Handwritten scribbles and notes, including "Spec G" and "300-1645"]*

**CONTROL - ~~SPEC G~~ SPEC G ONLY**

WD 612-1143  
 KIT 300-1796 (300-1795 CONTAINS)

REF. NO.	PART NO.	QTY. USED	PART DESCRIPTION
1	518-0056	1	Screw, Wing (#10-32 x 1/2")
2	821-0004	1	Screw, Self-locking - Hex Washer Head (#10-32 x 5/16")
3	301-4694	1	Cover, Control Box
4	321-0174	2	Fuse, Cartridge - 5 Ampere
5	821-0004	4	Screw, Self-locking - Hex Washer Head (#10-32 x 5/16")
6	321-0175	2	Fuseholder
7	308-0383	1	Switch, Toggle - Start/Stop
8	821-0004	2	Screw, Self-locking - Hex Washer Head (#10-32 x 5/16")
9	870-0131	2	Nut, Hex - With External Tooth Lockwasher (#10-32)
10	307-1575	2	Relay (K2, K3)
11	821-0008	2	Screw, Self-locking - Hex Washer Head (1/4-20 x 5/16)
12	307-1617	1	Solenoid (K1)
13	331-0088	1	Insulator, Bushing
14	812-0087	1	Screw, Machine - Round Head (#8-32 x 1-1/2")
15	304-0580	1	Insulator, Mounting
16	508-0015	1	Insulator, Washer
17	870-0221	1	Nut, Hex - With External Tooth Lockwasher (#8-32)
18	352-0161	1	Resistor, Fixed, Wirewound (100-Ohm, 5 Watt)
19	301-4442	1	Panel, Control
20	357-0030	1	Diode, Rectifier (CR2)
21	332-1043	2	Jumper, Terminal
22	821-0008	2	Screw, Self-locking - Hex Washer Head (1/4-20 x 5/16")
23	508-0195	1	Insulator, Bushing
24	508-0021	1	Grommet, Rubber
25	331-0102	1	Insulator, Bushing
26	812-0081	2	Screw, Machine - Round Head (#8-32 x 5/8")
27	854-0007	2	Washer, Lock - Internal Tooth (#8)
28	860-0008	2	Nut, Hex (#8-32)
29	332-0699	1	Terminal Block
30	812-0082	2	Screw, Machine - Round Head (#8-32 x 3/4")
31	853-0005	2	Washer, Lock - External Tooth Lockwasher (#8)
32	860-0008	2	Nut, Hex (#8-32)
33	332-0236	1	Terminal Block
34	332-2117	1	Marker Strip
35	821-0004	2	Screw, Self-locking - Hex Washer Head (#10-32 x 5/16")
36	870-0131	2	Nut, Hex - With External Tooth Lockwasher (#10-32)
37	305-0383	1	Regulator, Voltage (K5)
38	821-0004	1	Screw, Self-locking - Hex Washer Head (#10-32 x 5/16")
39	870-0131	1	Nut, Hex - With External Tooth Lockwasher (#10-32)
40	307-1632	1	Relay (K4)
41	301-4441	1	Plate, Mounting - Relay and Regulator
42	301-4634	1	Box, Control
43	338-1099	1	Harness, Wiring - Remote Control

*[Handwritten initials]*

*[Handwritten notes: F1 + F2]*

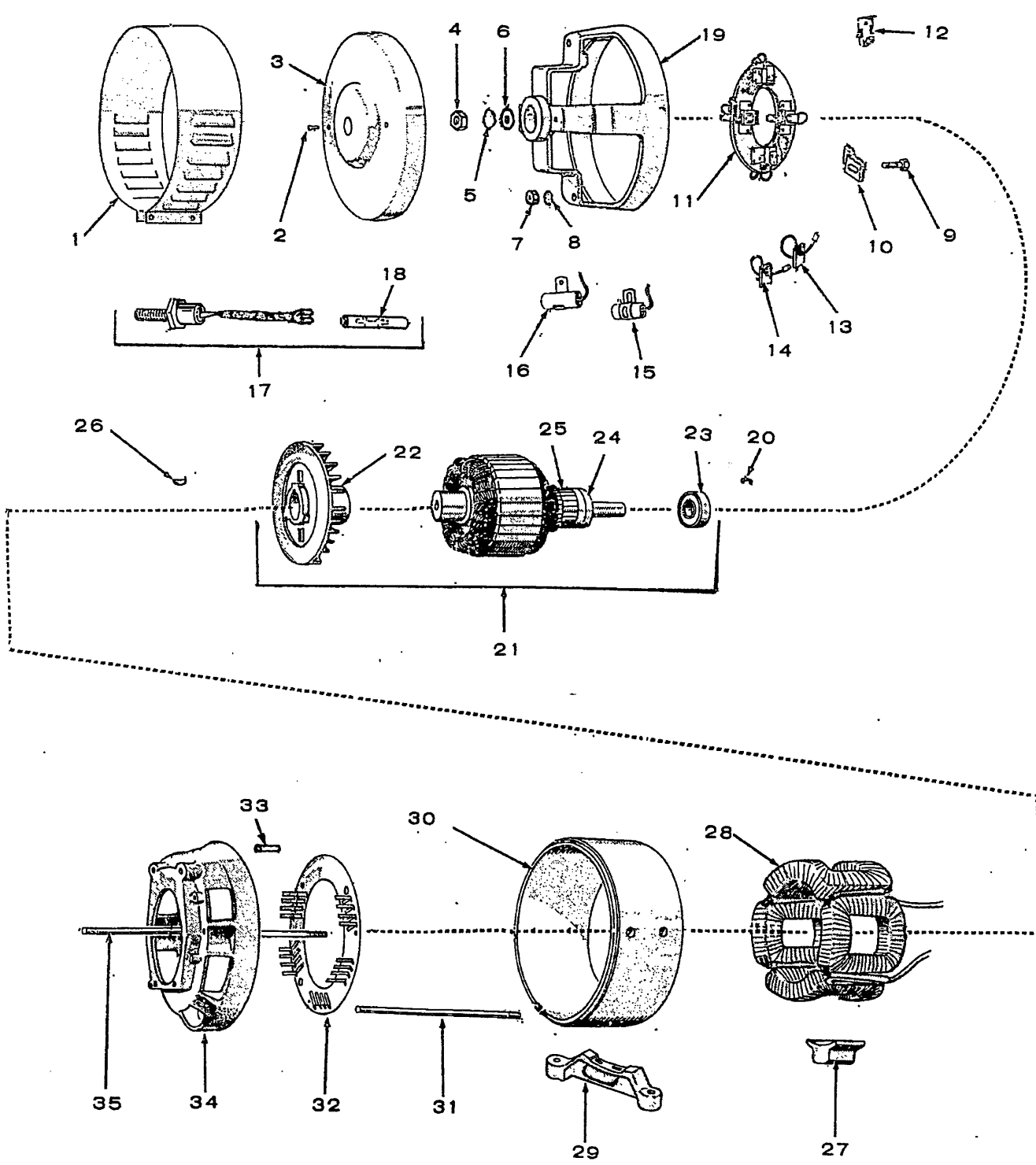
*[Handwritten note: Qty 3]*

*[Handwritten note: R1]*

~~612-1143~~ ~~300-1796~~ ~~(300-1795 CONTAINS)~~

44 332-1202 1 Harness, wiring (300-1645)

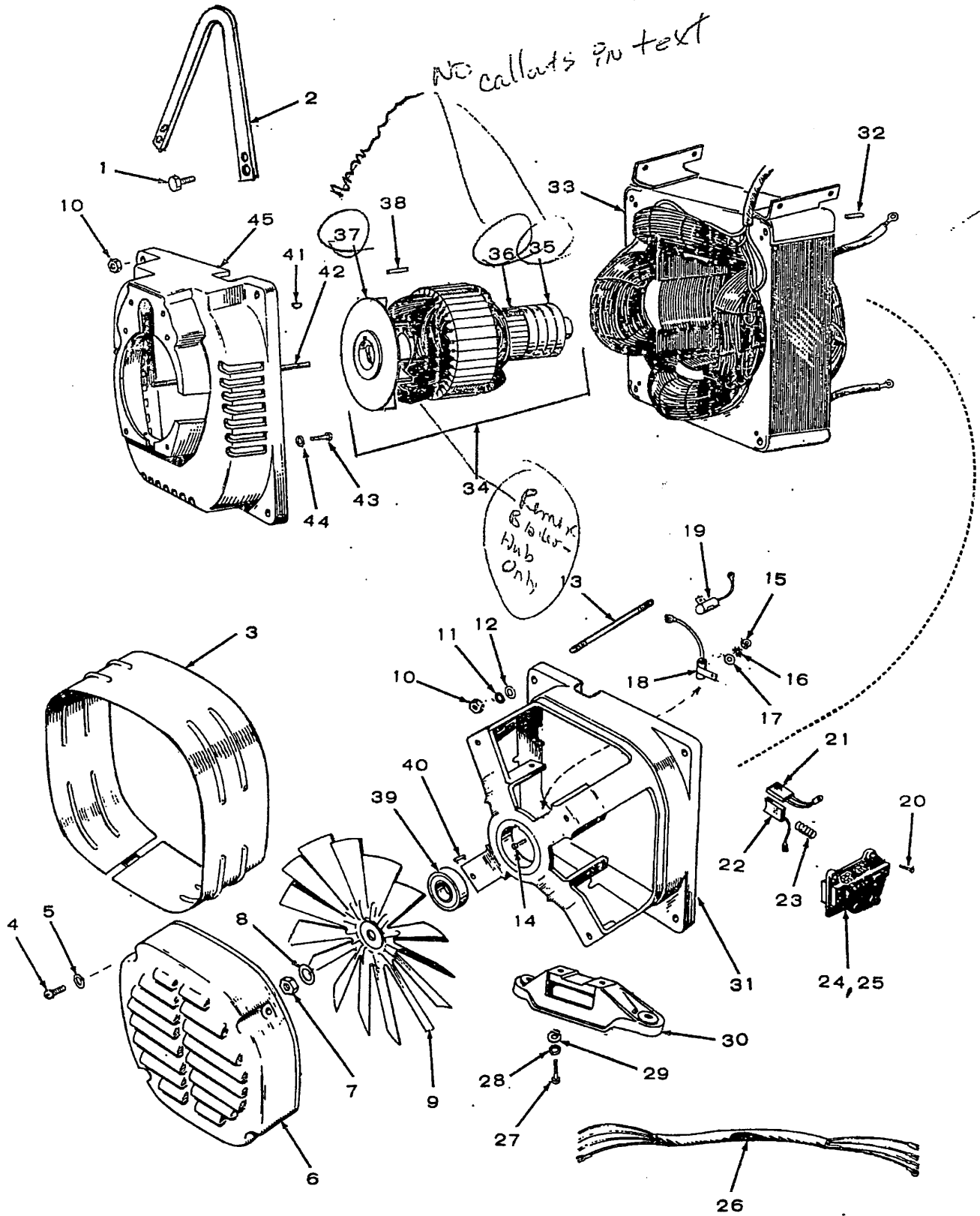
# GENERATOR - SPEC A THROUGH C ONLY



## GENERATOR - SPEC A THROUGH C ONLY

REF. NO.	PART NO.	QTY. USED	PART DESCRIPTION	REF. NO.	PART NO.	QTY. USED	PART DESCRIPTION
1	BAND, END BELL			21	ROTOR ASSEMBLY, GENERATOR (Includes Bearing, Blower, Collector and Commutator)		
	234-0255	1	3.5MCCK-51A & 51R; 4.0MCCK-1A & 1R; 5.5MCCK-51A, 51R & 52R; 6.5MCCK-1A & 1R		50 Hertz Sets		
	234-0256	1	4.0MCCK-3A & 3R; 5.5MCCK-53A & 53R; 6.5MCCK-3A, 3R & 4R	201-1481	1	3.5MCCK-51A & 3.5MCCK-51R	
2	815-0048	2	Screw, Tapping - Round Head (#10-32 x 3/8")	201-1377	1	3.5MCCK-53A & 3.5MCCK-53R	
3	211-0114	1	Cover, End Bell	201-1472	1	5.5MCCK-51A & 5.5MCCK-51R	
4	862-0004	1	Nut, Hex (7/16-14)	201-1474	1	5.5MCCK-52R	
5	850-0055	1	Washer, Lock - Spring (7/16")	201-1322	1	5.5MCCK-53A & 5.5MCCK-53R	
6	526-0032	1	Washer, Flat (29/64" ID x 7/8" OD x 1/16" Thk)		60 Hertz Sets		
7	862-0015	2	Nut, Hex (5/16-18)	201-1317	1	3.5MCCK-1A & 3.5MCCK-1R	<i>no Reck-1R</i>
8	850-0045	2	Washer, Lock - Spring (5/16")	201-1318	1	3.5MCCK-3A & 3.5MCCK-3R	<i>no Reck-3R</i>
9	800-0003	4	Screw, Cap - Hex Head (1/4-20 x 1/2")	201-1313	1	6.5MCCK-1A & 6.5MCCK-1R	
				201-1314	1	6.5MCCK-3A & 6.5MCCK-3R	
				201-1582	1	6.5MCCK-4R	
10	212-1214	4	Clamp, Retaining - Brush Rig	22	205-0053	1	Blower, Rotor
11	BRUSH RIG ASSEMBLY (Includes Brushes & Springs)			23	510-0047	1	Bearing, Ball - Rotor
	212-0293	1	5.5MCCK-51A & 51R; 6.5MCCK-1A & 1R	24	COLLECTOR RING		
	212-0294	1	3.5MCCK-51A & 51R; 4.0MCCK-1A & 1R; 5.5MCCK-52R	204-0009	1	3.5MCCK-51A & 51R; 4.0MCCK-1A & 1R; 5.5MCCK-51A & 51R & 52R; 6.5MCCK-1A & 1R	
	212-0295	1	3.5MCCK-53A & 53R; 4.0MCCK-3A & 3R; 5.5MCCK-53A & 53R; 6.5MCCK-3A & 3R	204-0010	1	3.5MCCK-53A & 53R; 4.0MCCK-3A & 3R; 5.5MCCK-53A & 53R; 6.5MCCK-3A & 3R	
	212-0298	1	6.5MCCK-4R	204-0092	1	6.5MCCK-4R	
12	212-1105	AR	Spring, Brush	25	COMMUTATOR		
13	214-0061	4	Brush, Commutator	203-0008	1	3.5MCCK-51A & 51R & 53A & 53R; 4.0MCCK-1A & 1R & 3A & 3R	
14	BRUSH, COLLECTOR RING			203-0127	1	5.5MCCK-51A & 51R & 52R & 53A & 53R; 6.5MCCK-1A & 1R & 3A & 3R & 4R	
	214-0050	4	3.5MCCK-51A & 51R; 4.0MCCK-1A & 1R; 5.5MCCK-52R	26	515-0006	1	Key, Woodruff
	213-0056	3	3.5MCCK-53A & 53R; 4.0MCCK-3A & 3R; 5.5MCCK-53A & 53R; 6.5MCCK-3A & 3R	27	POLE SHOE		
	215-0056	4	5.5MCCK-51A & 51R; 6.5MCCK-1A & 1R & 4R	221-0091	4	3.5MCCK; 4.0MCCK	
15	CAPACITOR, FIXED, PAPER DIELECTRIC (.1Mfd, 400 WVDC)			221-0090	4	5.5MCCK; 6.5MCCK	
	312-0058	1	3.5MCCK-51A & 51R; 4.0MCCK-1A & 1R; 5.5MCCK-51A & 51R & 52R; 6.5MCCK-1A & 1R	28	FIELD COIL ASSEMBLY		
	312-0058	2	3.5MCCK-53A & 53R; 4.0MCCK-3A & 3R; 5.5MCCK-53A & 53R; 6.5MCCK-3A & 3R	222-1640	1	3.5MCCK; 4.0MCCK	
	312-0058	3	6.5MCCK-4R	222-1639	1	5.5MCCK; 6.5MCCK	
16	CAPACITOR, FIXED, PAPER DIELECTRIC (.5Mfd, 200 WVDC)			29	232-1798	1	Support, Generator
	312-0017	1	3.5MCCK-51A & 51R; 4.0MCCK-1A & 1R; 5.5MCCK-51A & 51R & 52R; 6.5MCCK-1A & 1R	30	GENERATOR FRAME		
	312-0027	1	3.5MCCK-53A & 53R; 4.0MCCK-3A & 3R; 5.5MCCK-53A & 53R; 6.5MCCK-3A & 3R & 4R	210-0244	1	3.5MCCK; 4.0MCCK	
17	305-0397	1	Diode, Rectifier - With Lead and Connector	210-0239	1	5.5MCCK; 6.5MCCK	
18	332-0556	1	Connector, Quick-Disconnect	31	STUD - THROUGH GENERATOR		
19	END BELL			520-0502	2	3.5MCCK; 4.0MCCK (5/16-18 x 12-3/16")	
	211-0097	1	3.5MCCK-51A & 51R; 4.0MCCK-1A & 1R; 5.5MCCK-51A & 51R & 52R; 6.0MCCK-1A & 1R	520-0498	2	5.5MCCK; 6.5MCCK (5/16-18 x 15-11/16")	
	211-0098	1	3.5MCCK-53A & 53R; 4.0MCCK-3A & 3R; 5.5MCCK-53A & 53R; 6.0MCCK-3A & 3R & 4R	32	232-1256	1	Plate, Baffle - Air
	232-0598	1	Clip, Retaining - Bearing	33	516-0103	2	Pin, Roll
				34	231-0124	1	Adapter - Generator to Engine
				35	STUD - THROUGH ROTOR		
				520-0407	1	5.5MCCK-51A & 51R & 52R; 6.5MCCK-1A & 1R (7/16-14 x 17-7/8")	
				520-0491	1	3.5MCCK-51A & 51R; 4.0MCCK-1A & 1R (7/16-14 x 14-1/2")	
				520-0525	1	3.5MCCK-53A & 53R; 4.0MCCK-3A & 3R (7/16-14 x 15-7/8")	
				520-0595	1	5.5MCCK-53A & 53R; 6.5MCCK-3A & 3R & 4R (7/16-14 x 19-1/2")	

# GENERATOR - SPEC D ONLY



## GENERATOR - SPEC D ONLY

REF. NO.	PART NO.	QTY. USED	PART DESCRIPTION
1	815-0454	4	Screw, Tapping - Hex Head (5/16-18 x 1-1/4")
2	403-0934	1	Bracket, Lifting
3	234-0362	1	Wrapper, End Bell
4	812-0156	2	Screw, Machine - Round Head (1/4-20 x 1-1/2")
5	850-0040	2	Washer, Lock - Spring (1/4")
6	232-2107	1	Cover, Generator Fan
7	870-0203	1	Nut, Hex (7/16-20)
8	850-0055	1	Washer, Lock - Spring (7/16")
9	205-0090	1	Fan, Generator
10	862-0015	8	Nut, Hex (5/16-18)
11	850-0045	4	Washer, Lock - Spring (5/16")
12	526-0115	4	Washer, Flat (11/32" ID x 11/16" OD x 1/16" Thk)
13	STUD - THROUGH GENERATOR		
	520-0730	4	5.5MCCK; 6.5MCCK
	520-0731	4	3.5MCCK; 4.0MCCK
14	813-0103	4	Screw, Machine - Round Head (#10-32 x 3/4")
15	870-0053	4	Nut, Hex (#10-32)
16	853-0008	4	Washer, Lock - External Tooth (#10)
17	526-0049	4	Washer, Flat - Brass (0.20" ID x 7/16" OD x 1/32" Thk)
18	312-0182	3	Capacitor (0.1 Mfd)
19	312-0017	2	Capacitor (0.5 Mfd)
20	815-0359	12	Screw, Tapping - Hex Washer Head (#10-32 x 7/8")
21	214-0096	8	Brush, Collector Ring
22	214-0095	4	Brush, Commutator
23	212-1232	12	Spring, Brush
24	212-0359	2	Block, Generator Brush - Bottom & Right Side Position
25	212-0360	2	Block, Generator Brush - Top & Left Side Position
26	338-0592	1	Wiring Harness - Generator
27	800-0051	2	Screw, Cap - Hex Head (3/8-16 x 1-1/4")
28	850-0050	2	Washer, Lock - Spring (3/8")
29	526-0030	2	Washer, Flat (13/32" ID x 7/8" OD x 1/8" Thk)
30	232-2109	1	Support, Generator
31	211-0187	1	End Bell, Generator
32	516-0182	8	Pin, Dowel (1/4" OD x 3/4")
33	STATOR, GENERATOR		
	220-1476	1	5.5MCCK; 6.5MCCK
	220-1478	1	4.0MCCK
34	ROTOR, GENERATOR (Includes Collector Ring, Commutator and Blower Hub)		
	201-1690	1	6.5MCCK-1R & 3CR
	201-1692	1	5.5MCCK
	201-1694	1	4.0MCCK
	201-1700	1	6.5MCCK-4R
38	515-0007	1	Key, Drive - Blower Hub
39	510-0047	1	Bearing, Ball
40	232-0596	1	Clip, Retaining - Bearing
41	515-0006	1	Key, Woodruff - Crankshaft to Hub
42	STUD - THROUGH ROTOR		
	520-0730 0733	1	5.5MCCK; 6.5MCCK
	520-0731 0732	1	4.0MCCK
43	800-0051	4	Screw, Cap - Hex Head (3/8-16 x 1-1/4")
44	850-0050	4	Washer, Lock - Spring (3/8")
45	231-0150	1	Adapter, Generator

35 204-0107

36 203-0150 Ky 2

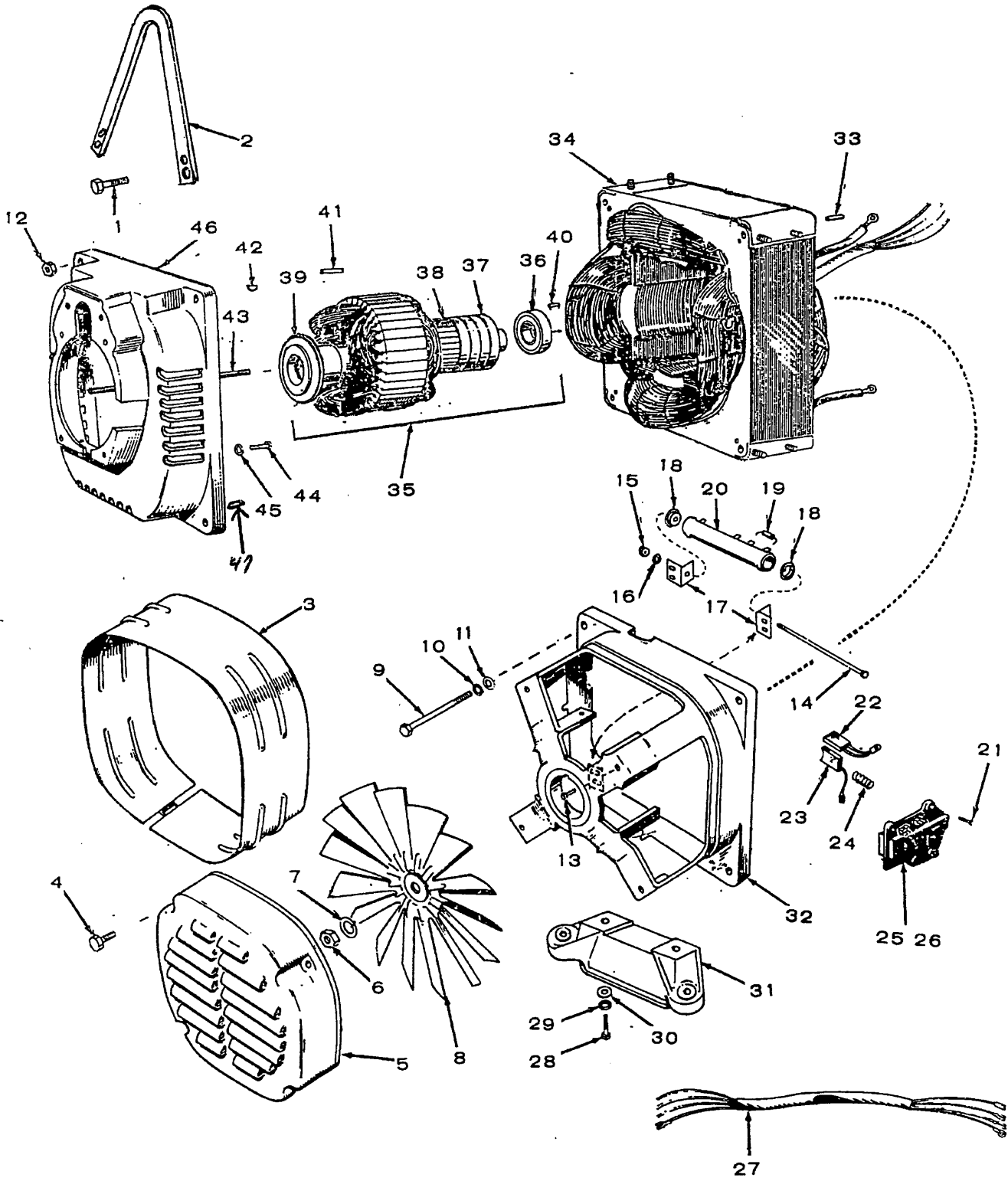
37 203-0151 Ky 1

37 232-2108

35 - ~~232-2108~~  
 36 - ~~232-2108~~  
 37 - 232-2108-HUB



# GENERATOR - SPEC E AND F ONLY



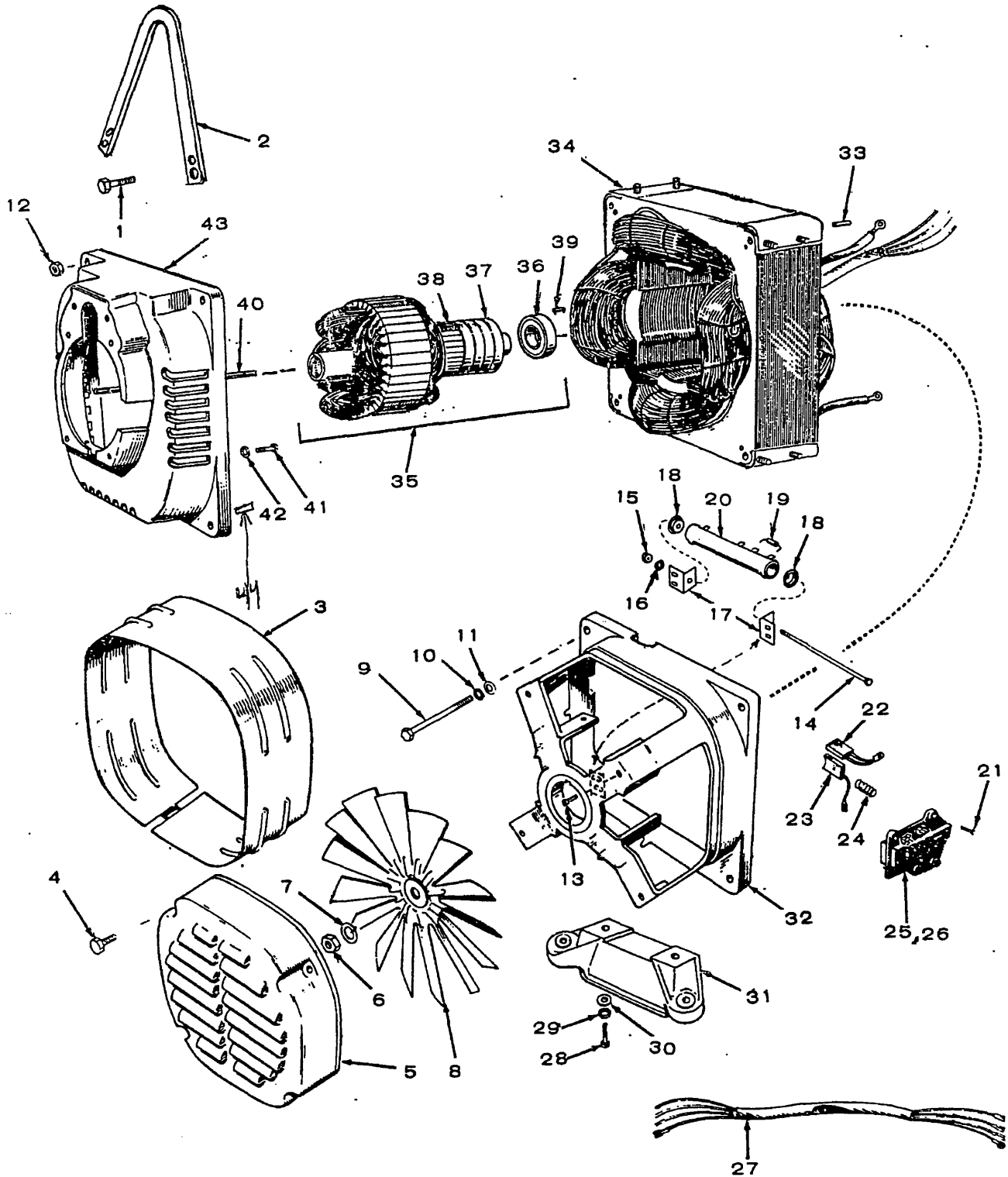
## GENERATOR - SPEC E AND F ONLY

REF. NO.	PART NO.	QTY. USED	PART DESCRIPTION	PART NO.	QTY. USED	PART DESCRIPTION
1	815-0454	4	Screw, Tapping - Hex Head (5/16-18 x 1-1/4")	28	800-0051	2 Screw, Cap - Hex Head (3/8-16 x 1-1/4")
2	403-0934	1	Bracket, Lifting	29	850-0050	2 Washer, Lock - Spring (3/8")
3	234-0362	1	Wrapper, End Bell	30	526-0030	2 Washer, Flat (13/32" ID x 7/8" OD x 1/8" Thk).
4	815-0441	2	Screw, Tapping - Hex Washer Head (1/4-20 x 1-1/2")	31	232-2321	1 Support, Generator
5	232-2107	1	Cover, Generator Fan	32	211-0187	1 End Bell, Generator
6	870-0203	1	Nut, Hex - Hardened (7/16-20)	33	516-0182	8 Pin, Dowel (1/4" OD x 3/4")
7	850-0055	1	Washer, Lock - Spring (7/16")	34	STATOR, GENERATOR	
8	205-0090	1	Fan, Generator	220-1816	1	5.5MCCCK-Spec E; 6.5MCCCK-Spec E
9	SCREW, CAP - HEX HEAD			220-1818	1	3.5MCCCK-Spec F; 4.0MCCCK-Spec E & F
	800-0043	4	3.5MCCCK, 4.0MCCCK (5/16-18 x 5")	220-1821	1	6.5MCCCK-Spec F
	800-0044	4	5.5MCCCK, 6.5MCCCK (5/16-18 x 7-1/2")	220-1822	1	5.5MCCCK-Spec F
10	850-0045	4	Washer, Lock - Spring (5/16")	35	ROTOR, GENERATOR (Includes Bearing, Commutator, Collector Ring and Drive Hub)	
11	526-0115	4	Washer, Flat (11/32" ID x 11/16" OD x 1/16" Thk)	201-1903	1	6.5MCCCK-3CR
12	862-0015	4	Nut, Hex (5/16-18)	201-1905	1	5.5MCCCK-Spec E
13	815-0333	2	Screw, Tapping - Round Head (#10-32 x 1/2")	201-1907	1	4.0MCCCK
14	812-0118	1	Screw, Machine - Round Head (#10-32 x 5")	201-1912	1	5.5MCCCK-Spec F
15	860-0011	1	Nut, Hex (#10-24)	201-1813	1	6.5MCCCK-4R
16	850-0030	1	Washer, Lock - Spring (#10)	201-2323	1	3.5MCCCK-Spec F
17	304-0706	2	Bracket, Mounting, Resistor	36	510-0047	1 Bearing, Ball
18	304-0015	2	Washer, Centering, Resistor	37	204-0110	1 Ring, Collector
19	357-0020	1	Diode, Rectifier	38	COMMUTATOR	
20	353-0047	1	Resistor, Tapped, Wirewound	203-0152	1	5.5MCCCK; 6.5MCCCK
21	815-0359	15	Screw, Tapping - Hex Washer Head (#10-32 x 7/8")	203-0153	1	3.5MCCCK; 4.0MCCCK
22	214-0096	8	Brush, Collector Ring	39	232-2316	1 Hub, Drive
23	214-0095	4	Brush, Commutator	40	232-0596	1 Clip, Retaining - Bearing
24	212-1232	12	Spring, Brush	41	515-0007	1 Key - Drive Hub
25	212-0359	2	Block, Generator Brush - Bottom & Right Side Position	42	515-0006	1 Key, Woodruff - Crankshaft/Hub.
26	212-0360	2	Block, Generator Brush - Top & Left Side Position	43	STUD - THROUGH ROTOR	
27	338-0642	1	Wiring Harness - Generator	520-0732	1	3.5MCCCK; 4.0MCCCK
				520-0233	1	5.5MCCCK; 6.5MCCCK
				44	800-0051	4 Screw, Cap - Hex Head (3/8-16 x 1-1/4")
				45	850-0050	4 Washer, Lock - Spring (3/8")
				46	231-0164	1 Adapter - Generator to Engine

47 516-0182 4 \* Pin, Dowel \* (Includes Part Marked \*)

\* - Parts Included in 231-0164 Gen. Adapter.

# GENERATOR - BEGIN SPEC G



## GENERATOR - BEGIN SPEC G

REF. NO.	PART NO.	QTY. USED	PART DESCRIPTION
1	815-0454	4	Screw, Tapping - Hex Head (5/16-18 x 1-1/4")
2	403-0934	1	Bracket, Lifting
3	234-0362	1	Wrapper, End Bell
4	815-0441	2	Screw, Tapping - Hex Washer Head (1/4-20 x 1-1/2")
5	232-2107	1	Cover, Generator Fan
6	870-0203	1	Nut, Hex - Hardened (7/16-20)
7	850-0055	1	Washer, Lock - Spring (7/16")
8	205-0090	1	Fan, Generator
9	SCREW, CAP-HEX HEAD		
	800-0043	4	3.5MCCK; 4.0MCCK (5/16-18x5")
	800-0044	4	5.5MCCK; 6.5MCCK (5/16-18x7-1/2")
10	850-0045	4	Washer, Lock - Spring (5/16")
11	526-0115	4	Washer, Flat (11/32" ID x 11/16" OD x 1/16" Thk)
12	862-0015	4	Nut, Hex (5/16-18)
13	815-0333	2	Screw, Tapping - Round Head (#10-32 x 1/2")
14	812-0118	1	Screw, Machine - Round Head (#10-24 x 5")
15	860-0011	1	Nut, Hex (#10-24)
16	850-0030	1	Washer, Lock - Spring (#10)
17	304-0706	2	Bracket, Mounting, Resistor
18	304-0015	2	Washer, Centering, Resistor
19	357-0020	1	Diode, Rectifier
20	353-0047	1	Resistor, Tapped, Wirewound
21	815-0359	15	Screw, Tapping - Hex Washer Head (#10-32 x 7/8")
22	214-0096	8	Brush, Collector Ring
23	214-0095	4	Brush, Commutator
24	212-1232	12	Spring, Brush
25	212-0359	2	Block, Generator Brush - Bottom & Right Side Position
26	212-0360	2	Block, Generator Brush - Top & Left Side Position
27	338-1099	1	Wiring Harness - Generator
28	800-0051	2	Screw, Cap - Hex Head (3/8-16 x 1-1/4")
29	850-0050	2	Washer, Lock - Spring (3/8")
30	526-0030	2	Washer, Flat (13/32" ID x 7/8" OD x 1/8" Thk)
31	232-2321	1	Support, Generator
32	211-0187	1	End Bell, Generator
33	516-0182	8	Pin, Dowel (1/4" OD x 3/4")
34	STATOR, GENERATOR		
	220-1818	1	3.5MCCK; 4.0MCCK
	220-1821	1	6.5MCCK
	220-1822	1	5.5MCCK
35	ROTOR, GENERATOR (Includes Bearing, Commutator and Collector Rings)		
	201-2503	1	6.5MCCK-3CR
	201-2504	1	4.0MCCK
	201-2505	1	3.5MCCK
	201-2506	1	5.5MCCK
	201-2512	1	6.5MCCK-4R
36	510-0047	1	Bearing, Ball
37	204-0110	1	Ring, Collector
38	COMMUTATOR		
	203-0152	1	5.5MCCK; 6.5MCCK
	203-0153	1	3.5MCCK; 4.0MCCK
39	232-0596	1	Clip, Retaining - Bearing
40	STUD - THROUGH ROTOR		
	520-0732	1	3.5MCCK; 4.0MCCK
	520-0233	1	5.5MCCK; 6.5MCCK
41	800-0051	4	Screw, Cap - Hex Head (3/8-16 x 1-1/4")
42	850-0050	4	Washer, Lock - Spring (3/8")
43	231-0164	1	Adapter, Generator to Engine
44	516-0196	4	X pin Dowel

*(includes part marked 10)*

*X - parts included for 231-0164 Gen Adapter*

## SERVICE KITS AND MISCELLANEOUS

REF. NO.	PART NO.	QTY. USED	PART DESCRIPTION
	98-1807	1	Decal Kit
	168-0102	1	Gasket Kit, Engine
	<del>168-0836</del>	<del>1</del>	<del>Ignition Tune-up Kit</del>
	<del>ENGINE OVERHAUL KIT</del>		
	<del>522-0221</del>	<del>1</del>	<del>Spec-A-Only</del>
	<del>522-0229</del>	<del>1</del>	<del>Begin-Spec B</del>
	525-0216	1	Touch-up Paint (Pressurized Can) 16-Ounce - Marine White Enamel

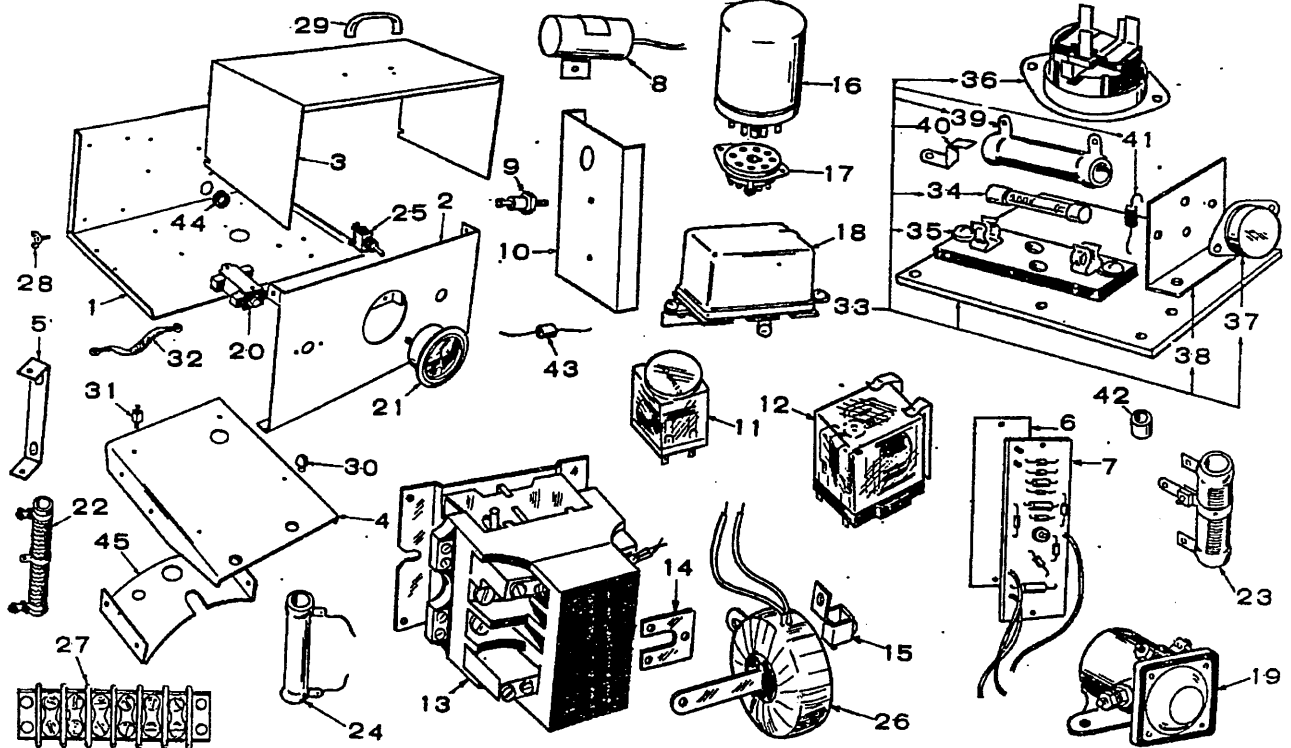
**NOTE:** For other kits, refer to the group for the part in question.

## OPTIONAL EQUIPMENT PARTS SECTION

This section contains illustrated parts listing of factory installed options for the generator sets. Options may not be applicable to all models; for field conversions additional parts are usually required. Optional parts listed in this section are in addition or in place of those shown in the standard parts section.

# CONTROL-O-MATIC - SPEC C ONLY

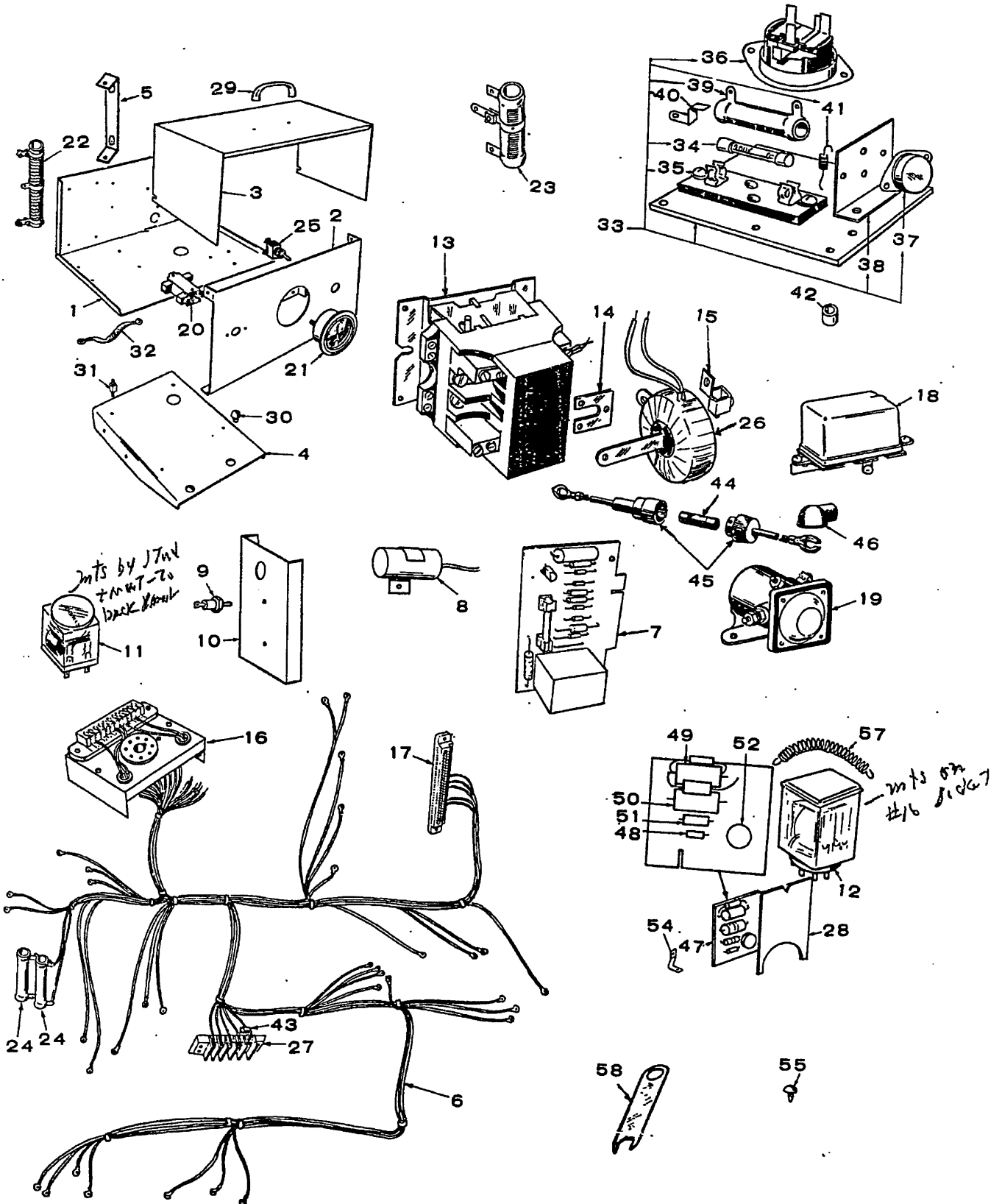
307-0750



REF. NO.	PART NO.	QTY. USED	PART DESCRIPTION	REF. NO.	PART NO.	QTY. USED	PART DESCRIPTION
1	301-2889	1	Chassis, Control	23	RESISTOR, ADJUSTABLE		
2	301-2886	1	Panel, Control Box	304-0282	1	120 Volt Sets (300-Ohm, 25 Watt)	
3	301-2888	1	Cover, Control Box	304-0131	1	240 Volt and 120/240 Volt Sets (750-Ohm, 25 Watt)	
4	301-2887	1	Plate, Control Box Mounting	24	RESISTOR, FIXED		
5	301-3058	1	Bracket, Resistor Mounting	304-0192	1	3-Ohm, 10 Watt	
6	332-0932	1	Board, Insulating	304-0217	1	1-Ohm, 10 Watt	
7	AMPLIFIER ASSEMBLY, LOAD SENSOR			304-0060	1	72-Ohm, 25 Watt	
	300-0573	1	120 Volt Sets	308-0138	1	Switch, Selector	
	300-0574	1	240 Volt Sets	26	TRANSFORMER, CURRENT		
	300-0575	1	120/240 Volt Sets	315-0241	1	120 Volt and 240 Volt Sets	
8	312-0057	1	Capacitor (1 Mfd.)	315-0291	1	120/240 Volt Sets	
9	305-0235	2	Diode, Reverse Current	332-0699	1	Block, Terminal	
10	363-0029	1	Sink, Heat (2 Diode)	27	332-0699	1	Block, Terminal
11	307-0981	1	Relay, Start-Stop	28	518-0056	2	Screw, Wing (10-32 x 1/2")
12	307-0642	1	Relay, Start Disconnect	29	406-0318	1	Handle
13	CONTACTOR			30	402-0331	2	Foot, Control Box Mounting Plate
	307-0665	1	120 Volt Sets	31	402-0354	4	Mount, Shock
	307-0664	1	240 Volt Sets	32	337-0056	1	Strap, Ground
	307-0666	1	120/240 Volt Sets	33	300-0567	1	Control Assembly, Bilge Blower (Includes Parts Marked *)
14	JUMPER			34	321-0139	1	*Fuse (6-1/4 Amp)
	307-0685	2	120 Volt Sets	35	321-0140	1	*Holder, Fuse
	160-0144	2	120/240 Volt Sets	36	307-0993	1	*Relay, Thermal
15	TERMINAL			37	362-0018	1	*Transistor, Power
	332-0142	4	120 Volt Sets	38	363-0036	1	*Sink, Heat - Transistor Mounting
	332-0517	4	240 Volt Sets	39	304-0121	1	*Resistor (10-Ohm, 10 Watt)
	332-0517	6	120/240 Volt Sets	40	304-0670	2	*Feet, Resistor Mounting
16	RELAY, START-RUN			41	350-0524	1	*Resistor (100-Ohm, 1/2 Watt)
	307-0062	1	120 Volt and 240 Volt Sets	42	332-1179	3	Spacer
	307-0858	1	120/240 Volt Sets	43	357-0004	1	Diode
17	323-0380	1	Socket, Relay	44	508-0021	1	Grommet
18	305-0383	1	Relay, Charge Regulator (2 Step)	45	301-2532	1	Bracket, Mounting to Generator
19	307-0845	1	Relay, Start Solenoid				
20	320-0000	1	Switch, Emergency				
21	302-0058	1	Ammeter, Charge (10-0-10)				
22	304-0483	1	Resistor, Tapped (6-Ohms, 225 Watts)				

\* - Included in 300-0567 Bilge Blower Control Assembly.

# CONTROL-O-MATIC - BEGIN SPEC D



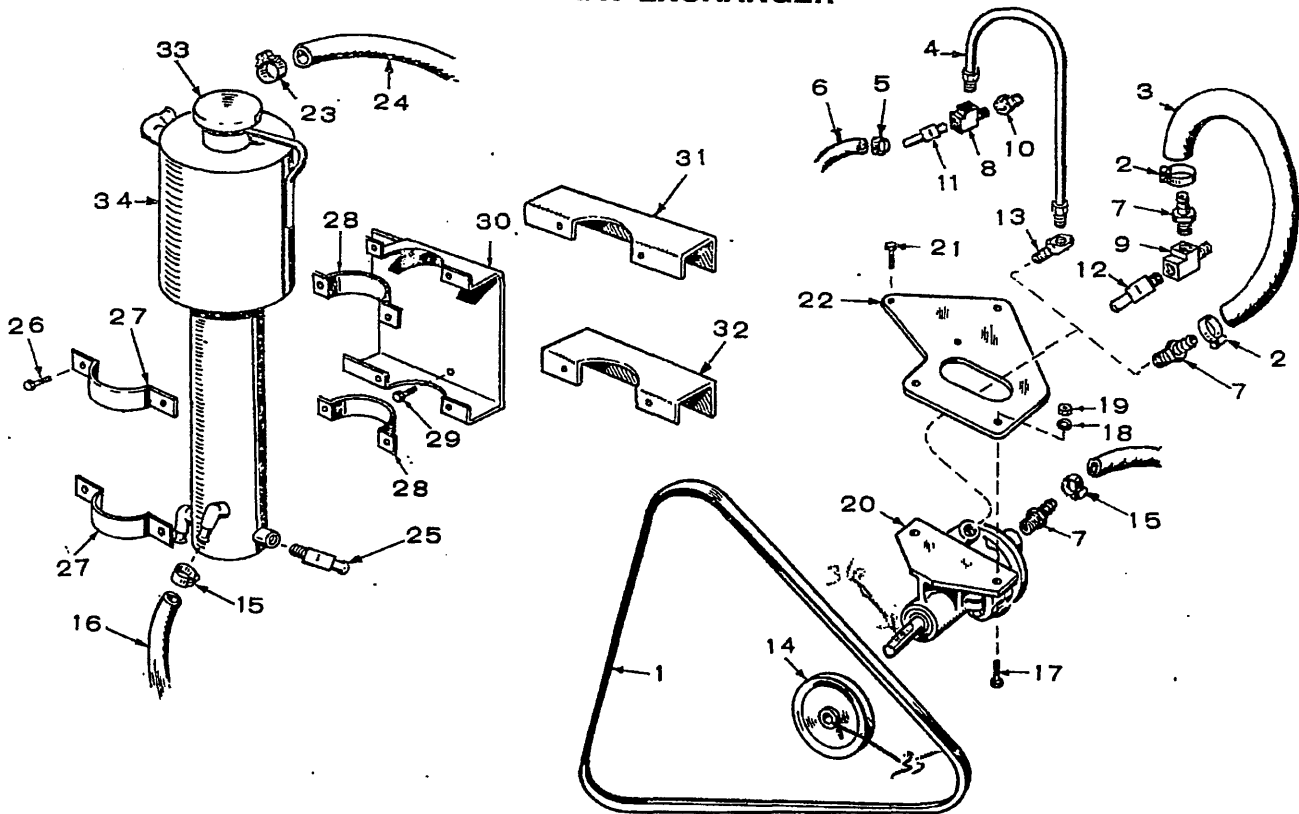
## CONTROL-O-MATIC - BEGIN SPEC D

REF. NO.	PART NO.	QTY. USED	PART DESCRIPTION	REF. NO.	PART NO.	QTY. USED	PART DESCRIPTION
1	CHASSIS, CONTROL			25	308-0138	1	Switch, Selector
	301-3287	1	Spec D Only	26	315-0344	1	Transformer, Current
	301-3568	1	Begin Spec E	27	332-0699	1	†*Block, Terminal
2	301-2886	1	Panel, Control Box	28	301-3307	1	Spacer, Relay Hold-down
3	301-2888	1	Cover, Control Box	29	406-0318	1	Handle
4	PLATE, CONTROL BOX MOUNTING			30	402-0331	2	Foot, Control Box Mounting Plate
	301-3250	1	Spec D Only				
	301-3559	1	Begin Spec E	31	402-0354	4	Mount, Shock
5	301-3058	1	Bracket, Resistor Mounting	32	337-0056	1	Strap, Ground
6	HARNESS, WIRING			33	300-0567	1	Control Assembly, Bilge Blower (Includes Parts Marked †*)
	338-0549	1	Spec D Only (Includes Parts Marked *)				
	338-0683	1	Begin Spec E (Includes Parts Marked †)	34	321-0139	1	*Fuse (6-1/4 Amp)
7	300-0740	1	Amplifier Assembly, Load Sensor (See separate group for Components)	35	321-0140	1	*Holder, Fuse
				36	307-0993	1	*Relay, Thermal
				37	362-0018	1	*Transistor, Power
				38	363-0036	1	*Sink, Heat - Transistor Mounting
8	312-0057	1	Capacitor (1 Mfd.)	39	304-0121	1	*Resistor (10-Ohm, 10 Watt)
9	305-0235	1	Diode, Reverse Current	40	304-0670	2	*Feet, Resistor Mounting
10	305-0254	1	Sink, Heat	41	350-0524	1	*Resistor (100-Ohm, 1/2 Watt)
11	307-0981	1	Relay, Start-Stop	42	332-1179	3	Spacer
12	307-1070	1	Relay, Start-Disconnect	43	357-0004	1	†*Diode
13	307-0665	1	Contacto	44	321-0194	1	Fuse, Cartridge (9 Amp)
14	307-0685	2	Jumper	45	321-0225	1	Fuseholder
15	332-0142	4	Terminal	46	332-2112	1	Insulating, Terminal
16	SOCKET ASSEMBLY, START-DISCONNECT			47	300-0734	1	Amplifier Assembly, Start-Disconnect (Includes Parts Marked **)
	323-0813	1	*Spec D Only				
	323-0842	1	†Begin Spec E	48	359-0028	1	**Diode, Zener
17	332-1282	1	†*Housing, Printed Circuit Board Terminal	49	350-0979	1	**Resistor, 470-Ohm, 2 Watt
18	305-0383	1	Relay, Charge Regulator (2-Step)	50	350-0985	1	**Resistor, 820-Ohm, 2 Watt
19	RELAY, START SOLENOID			51	350-0397	1	**Resistor, 2700-Ohm, 1/2 Watt
	307-0845	1	Spec D Only	52	362-0032	1	**Transistor
	307-1166	1	Begin Spec E	54	301-3280	2	Bracket, Amplifier Mounting
20	320-0104	1	Switch, Emergency	55	518-0295	2	Fastener, Snap
21	302-0058	1	Ammeter, Charge (10-0-10)	57	301-3306	1	Spring, Relay Hold-down
22	304-0483	1	Resistor, Tapped (6-Ohm, 225 Watt)	58	160-0144	1	Jumper, Terminal
23	304-0282	1	Resistor, Adjustable (300-Ohm, 25 Watt)				
24	RESISTOR, FIXED						
	304-0192	1	†*3-Ohm, 10 Watt				
	304-0060	1	72-Ohm, 25 Watt				
	304-0217	1	†*1-Ohm, 10 Watt				

\*\* - Included in 300-0734 Amplifier Assembly.  
 \* - Included in 300-0567 Bilge Blower Control Assembly.  
 † - Included in 338-0549 Wiring Harness Assembly.  
 †\* - Included in 338-0683 Wiring Harness Assembly.



# HEAT EXCHANGER



132-0881 (Heat Exchanger Kit - Begin spec D (incl parts marked +))

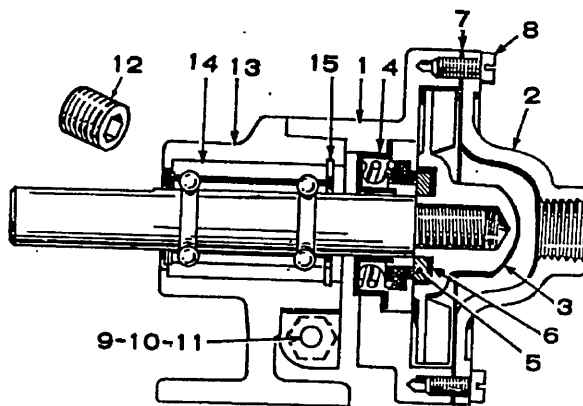
REF. NO.	PART NO.	QTY. USED	PART DESCRIPTION	REF. NO.	PART NO.	QTY. USED	PART DESCRIPTION
1	511-0041	1	+ Belt, Drive - Pump	24	503-0610	1	+ Hose, Rubber - Heat Exchanger to Raw Water
2	503-0547	2	+ Clamp, Hose (Current Models)	25	502-0237	1	+ Elbow, Hose (90°)
3	503-0459	1	+ Hose, Rubber (Current Models) - Pump to Block	26	821-0013	4	+ Screw, Self-Locking - Hex Head (1/4-20 x 1")
4	-	1	Line, Water (Early Models) - To replace order Current Model Parts.	27	130-0632	2	+ Strap, Retaining - Heat Exchanger (Outside)
5	503-0547	2	Clamp, Hose	28	STRAP, RETAINING - HEAT EXCHANGER (Inside)		
6	503-0468	1	Hose, Rubber - Pump to Block	130-0632		2	+ Spec A through D
7	502-0238	3	+ Nipple, Hose (Current Models)	130-0898		2	Begin Spec E
8	502-0164	1	Tee, Pipe (Early Models)	29	821-0010	4	+ Screw, Self-Locking - Hex Head (1/4-20 x 1/2")
9	502-0401	1	+ Tee, Pipe (Current Models)	30	130-0887	1	+ Plate, Mounting - Heat Exchanger - Begin Spec E
10	502-0126	1	Reducer, Pipe (Early Models)	31	BRACKET, MOUNTING - HEAT EXCHANGER (Upper)		
11	502-0237	1	+ Elbow, Hose (Current Models)	130-0630		1	Spec A through D
12	502-0304	1	Elbow, Pipe (Early Models)	130-0821		1	Spec D Only (Replace with 130-0887)
13	502-0275	1	Elbow, Pipe (45°) (Early Models)	32	BRACKET, MOUNTING, HEAT EXCHANGER (Lower)		
14	512-0042	1	+ Pulley - Water Pump (incl self screw 803-0062)	130-0631		1	Spec A through D
15	503-0547	2	Clamp, Hose	130-0822		1	Spec D Only (Replace with 130-0887)
16	503-0609	1	+ Hose, Rubber - Pump to Heat Exchanger	33	CAP, PRESSURE		
17	821-0011	2	Screw, Self-Locking - Hex Head (1/4-20 x 7/8")	130-0661		1	7 LB - Spec A through C
18	850-0040	1	+ Washer, Lock - Spring (1/4)	130-0824		1	14 LB - Begin Spec D
19	862-0001	2	+ Nut, Hex (1/4-20)	34	EXCHANGER, HEAT		
20	132-0110	1	+ Pump, - Water (less Pulley)	130-0629		1	Spec A through C
21	821-0016	3	Screw, Self-Locking - Hex Head (5/16-18 x 3/4")	130-0820		1	+ Begin Spec D
22	131-0172	1	+ Bracket, Mounting - Water Pump				
23	503-0547	2	Clamp, Hose				

35 803-0062 2 screws - water pump (also 803-0062)  
 - See Separate Group for Component Parts.  
 + parts included in 130-0881 Heat Exchanger Kit  
 5150229 1 + pump, water 927-0221 (MAY 1978)  
 1 of sheet

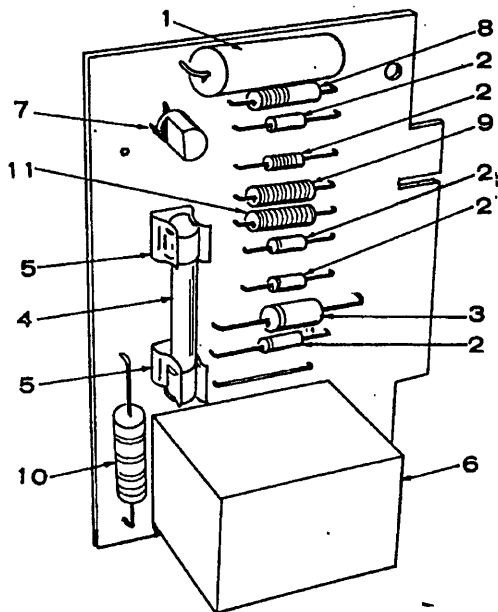
## WATER PUMP PARTS

REF. NO.	PART NO.	QTY. USED	PART DESCRIPTION
	132-0110	1	Pump, Water - Complete
	132-0111	1	Repair Kit (Includes Parts Marked *)
1	132-0136	1	Body, Pump
2	132-0137	1	Cover, Pump
3	132-0114	1	*Impeller
4	132-0101	1	*Seal
5	132-0091	1	*Face, Wear
6	132-0092	1	*Seat, Seal
7	132-0112	1	*Gasket, Cover
8	132-0113	6	*Screw, Cover
9	132-0138	1	Screw, Cap
10	132-0139	1	Lockwasher
11	132-0140	1	Nut, Hex
12	132-0141	1	Plug, Drain
13	132-0142	1	Pedestal
14	132-0089	1	*Shaft and Bearing Assembly
15	132-0132	1	Ring, Snap

\* - Parts included in the 132-0111 Repair Kit.



## LOAD SENSOR AMPLIFIER



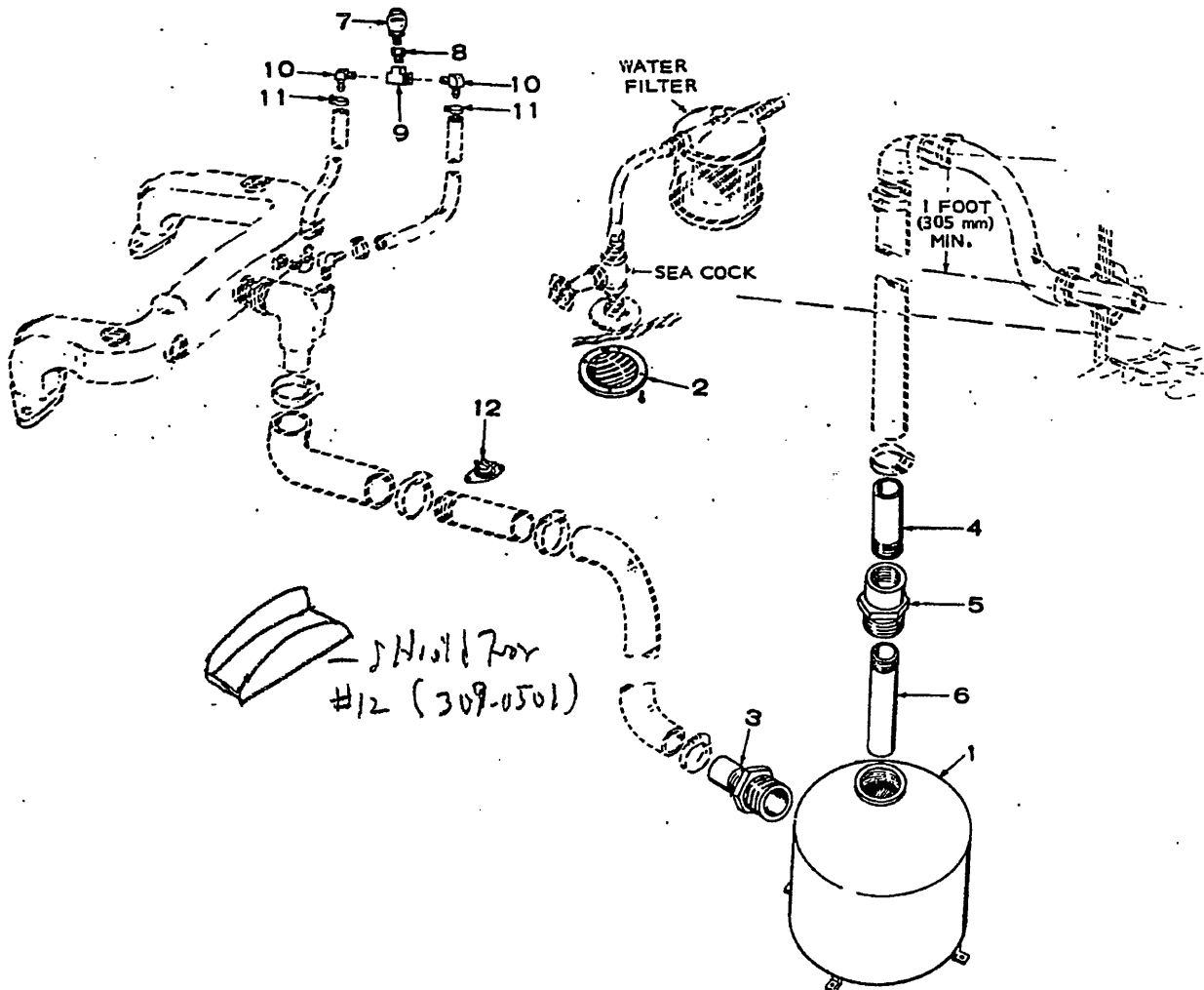
REF. NO.	PART NO.	QTY. USED	PART DESCRIPTION
	300-0740	1	Amplifier, Load Sensor -
1	356-0009	1	Capacitor - 10 Mfd.
2	357-0004	5	Diode, 400 MA., 400 Volt
3	359-0029	1	Diode, Zener 18 Volt, 2 Watt
4	321-0202	1	Fuse, 3/8 Amp
5	321-0163	2	Clip, Fuse
6	307-1087	1	Relay, Dual Coil
7	362-0007	1	Transistor, Signal
8	350-0548	1	Resistor, 10,000-Ohm, 1/2 Watt
9	350-0528	1	Resistor, 220-Ohm, 1/2 Watt
10	352-0111	1	Resistor, 47-Ohm, 2 Watt
11	350-0520	1	Resistor, 47-Ohm, 1/2 Watt

NOTE: This group applies to sets with Control-O-Matic.

## MISC. OPTIONS

- 1 110-3136 2 Gasket, Valve Guide } to stop oil  
 2 110-1827 4 Guide, Valve } seepage
- 527-0221 (MAY 1978)

## AQUALIFT EXHAUST SYSTEM



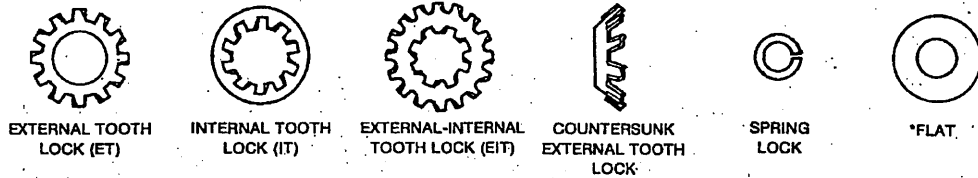
REF. NO.	PART NO.	QTY. USED	PART DESCRIPTION	REF. NO.	PART NO.	QTY. USED	PART DESCRIPTION
	155-1004	1	Kit, Aqualift Muffler (Includes items 1 and 2)		155-0950	1	Kit, Siphon Break Relief Valve (Includes Parts Marked +)
1	155-0929	1	Muffler, Exhaust - Aqualift Marine	7	504-0062	1	+Valve, Vacuum Relief (1/2" NPT)
2	155-1002	1	Strainer, Water - Thru Hull	8	502-0090	1	+Tee, Pipe - Brass (3/8" NPT x 3/8" NPT x 3/8" NPT)
	155-0955	1	Package, Muffler - Hookup (Includes Parts Marked *)	9	502-0270	1	+Adapter, Pipe (3/8" NPT x 1/2" NPT)
3	155-1121	1	* Inlet Assembly, Epoxy Coated	10	502-0237	2	+Elbow, Pipe to Hose (3/8" NPT)
4	505-0721	1	*Nipple, Pipe - Half, Galvanized (1-1/4" NPT x 3")	11	503-0446	2	+Clamp, Hose (1/2")
5	505-0635	1	*Bushing, Double Tapped (1-1/4" NPT x 2" NPT)	12	309-0162	1	Switch, Thermostatic - SPSTNC (25 AMP)
6	505-0632	1	*Nipple, Pipe - Half, Galvanized (1-1/4" NPT x 9-1/4")				

\* - Parts Included in Package #155-0955.  
 + - Parts Included in Kit #155-0950.

# HARDWARE IDENTIFICATION

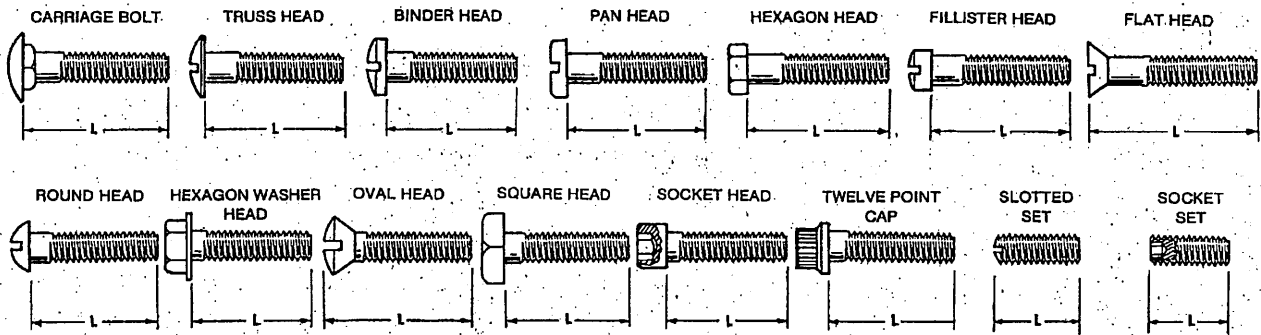
Illustrated hardware items are only for identification purposes. All hardware items listed throughout this parts catalog are steel SAE grade five (5) or lower (zinc plated with clear chromate dip) unless parts description indicates differently. All dimensions are in inches.

## WASHER TYPES

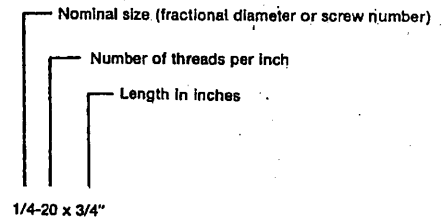
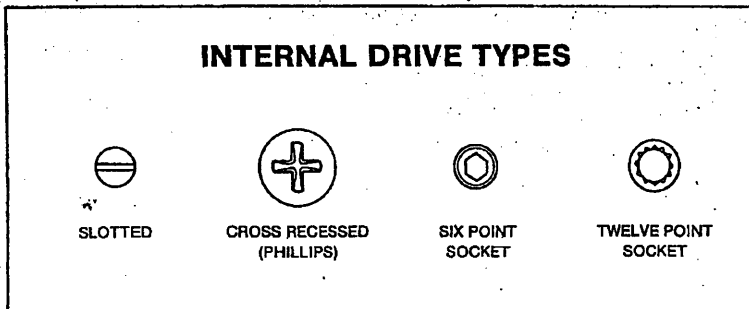


\* - Flat washer dimensions given are: Inside Diameter (ID), Outside Diameter (OD) and Thickness (Thk).

## BOLT AND SCREW TYPES



L - Measure length between these points.



## NUT TYPES

