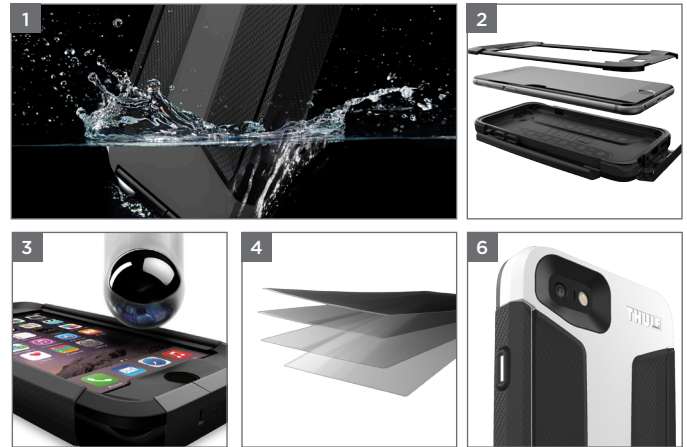




THULE ATMOS X5 iPhone® 6 PLUS CASE



# Thule Atmos X5 iPhone® 6 Plus Case

3203215, 3203216, 3203217

Waterproof case with IP68 rating ensures your phone is protected on any adventure.

1. Waterproof and dustproof case with IP68 rating ensures your phone is protected from the elements
2. Easy snap-on and snap-off case expertly engineered to ensure water-tight fit every time
3. StratoShield screen protector delivers 5 times impact protection (compared to screen alone)
4. StratoShield guards against impact, scratches, glare and fingerprints while maintaining touch-screen responsiveness
5. 2 meter drop tested: Shock-stop corners and bi-component armor provide exceptional protection
6. Textured backpanels enhance grip
7. Compatible with Touch ID™ sensor
8. Easy and full access to all ports
9. Removable wrist strap

**MODEL NUMBER**  
TAIE5125

**COLOR**  
Black  
White/Dark Shadow  
Floro/Dark Shadow

**CATEGORY**  
Smartphone Case

**REPLACES**  
New

**AVAILABLE (US)**  
10/1/15

**AVAILABLE (CAN)**  
10/1/15

**EXTERNAL PRODUCT DIMS (L X D X H)**  
3.5 x 0.7 x 6.7"      9.0 x 1.7 x 16.9 cm

**INTERNAL PRODUCT DIMS (L X D X H)**  
3.1 x 0.3 x 6.2"      7.8 x 0.7 x 15.8 cm

**PACKAGING DIMS (L X D X H)**  
4.6 x 1.3 x 8.7"      11.7 x 3.3 x 22.0 cm

**PRODUCT WEIGHT**      **PRODUCT VOLUME**  
0.48 lbs / 0.22 kg      n/a

**PACKAGING TYPE**      **MATERIALS**  
Box - Paperboard      Polycarbonate + TPE

**MASTER CARTON QTY**      **UPC / EAN CODE**  
6      085854236614 (Black)  
085854236621 (White/Dark Shadow)  
085854236638 (Floro/Dark Shadow)

**MASTER CARTON WEIGHT**  
3.35 lbs / 1.52 kg

**MASTER CARTON DIMS**  
9.1 x 8.1 x 5.1"      23.0 x 20.5 x 13.0 cm

**MASTER CARTON VOLUME**  
0.22 cu ft      0.006 cbm

**POLY BAG**  
Single

**COUNTRY OF ORIGIN**      **WARRANTY**  
China      25 years

**CONTENTS**  
1 Smartphone Case

**KEYWORDS**  
Apple, smartphone, phone case, iPhone, iPhone 6 Plus, Thule, Atmos, Atmos X5, TAIE5125, TAIE 5125, TAIE-5125, StratoShield, Touch ID, waterproof, dustproof