



LED-backlit LCD monitor with PowerSensor

- B Line
- 22 (21.5"/54.6 cm diag.)
- Full HD (1920 x 1080)

221B6QPYEB/00

## Crisp images, efficient performance

with PowerSensor saves energy

The Philips PowerSensor AH-IPS LED display, which uses 65% post-consumer recycled plastics and PVC, BFR-free housing, is ideal for eco-friendly productivity

### Benefits

#### Excellent performance

- AH-IPS display for brilliant images with vivid colours
- Less eye fatigue with Flicker-Free technology
- SmartImage pre-sets for easy optimised image settings

#### Designed for people

- SmartErgoBase enables user-friendly ergonomic adjustments
- Low bezel-to-table height for maximum reading comfort

#### Easy to experience

- Built-in stereo speakers for multimedia
- USB Hub with four ports for easy connections
- DisplayPort connection for maximum visuals

#### Sustainable Eco-design

- PowerSensor saves up to 80% energy costs
- Zero power consumption with 0 watt hard switch
- 65% post-consumer recycled plastics with TCO Edge

**PHILIPS**

## Features

### AH-IPS technology



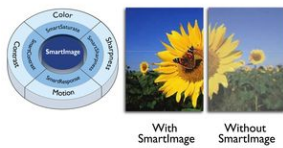
This latest Philips display uses advanced AH-IPS panels, resulting in superior colour reproduction, response time and power consumption. Unlike standard TN panels, AH-IPS panels show consistent colour even at 178-degree wide angles and in pivot mode. With remarkable performance, AH-IPS is best suited for applications demanding colour accuracy and consistent brightness at all times, such as photo retouching, graphics applications and web browsing.

### Flicker-Free technology



Due to the way brightness is controlled on LED-backlit screens, some users experience flicker on their screen which causes eye fatigue. Philips Flicker-Free technology applies a new solution to regulate brightness and reduce flicker for more comfortable viewing.

### SmartImage



SmartImage is an exclusive leading edge Philips technology that analyses the content displayed on your screen and optimises your display performance. This user-friendly interface allows you to select various modes, like Office, Photo, Movie, Game, Economy etc., to fit the application in use. Based on the selection, SmartImage dynamically optimises the contrast, colour saturation and sharpness of images and videos for ultimate display performance. The Economy mode option offers you major power savings. All in real time at the touch of a single button!

### SmartErgoBase



The SmartErgoBase is a monitor base that delivers ergonomic display comfort and provides cable management. The user-friendly height, swivel, tilt and rotation angle adjustments of the base allow the monitor to be positioned for maximum comfort to help ease the physical strains of a long workday. In addition, cable management reduces cable clutter and keeps the workspace neat and professional.

### Low bezel-to-table height



Thanks to its advanced SmartErgoBase, the Philips monitor can be lowered down almost to desk level for a comfortable viewing angle. Low bezel-to-table height is the perfect solution if you use bifocals, trifocals or progressive lens glasses for your computing work. Additionally, it allows users of different heights to use the monitor at their preferred angle and height settings, helping them to reduce fatigue and strain.

### Built-in stereo speakers

A pair of high-quality stereo speakers built into a display device. They may be visible front firing, or invisible down firing, top firing, rear firing etc. depending on model and design.

### Four Ports USB 2.0 HUB

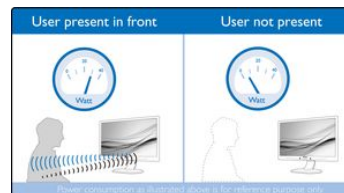
USB Hub allows user to conveniently connect their plug and play multimedia devices such as USB memory devices, camera, portable HDD, Web camera, PDA, Printer and many other devices which have USB connection available. The conveniently located USB 2.0 Hub on the monitor allows USB 2.0 signals to pass through to the computer. Note that many devices like cameras and HDD may need to be powered On independently, as they have higher power requirements than the monitor USB Hub can provide.

### DisplayPort connection



DisplayPort is a digital link from PC to monitor without any conversion. With higher capabilities than DVI standard, it is fully capable to support up to 15 metre cables and 10.8 Gbps/sec data transfer. With this high performance and zero latency, you get the fastest imaging and refresh rates — making DisplayPort the best choice for not only general office or home use, but also for the more demanding gaming and films, video editing and more. It also keeps interoperability in mind via the use of various adapters.

### PowerSensor



PowerSensor is a built-in 'people sensor' that transmits and receives harmless infrared signals to determine if the user is present and then automatically reduces monitor brightness when the user steps away from the desk, cutting energy costs by up to 80 percent and prolonging monitor life

### Zero power consumption

At the flick of the 0 watt hard switch, which is conveniently located at the back of the monitor, you can completely cut off your monitor from AC power. This results in zero power consumption, reducing your carbon footprint even further

## TCO Edge

TCO Edge certification is given to products that go beyond existing eco-labelling programmes. Over and above standard TCO requirements, it further mandates that the product uses a minimum of 65% post-consumer recycled plastics, is energy efficient, uses minimal hazardous materials, has 100%

recyclable packaging and, amongst other requirements, is designed for easy recycling. You can rest assured that this Philips monitor is a cutting edge technology product, which is best in class ICT, benefitting you and the planet while helping you make a responsible green IT purchase!

## Specifications

Please note that this is a pre-sales leaflet. The contents of this leaflet reflect the best of our knowledge per date and country mentioned above. The contents of this leaflet are subject to change without notice. Philips does not accept any liability as to the contents of this leaflet.

### Picture/Display

LCD panel type	AH-IPS LCD
Backlight type	W-LED system
Panel Size	21.5 inch/54.6 cm
Effective viewing area	476.06 (H) x 267.79 (V)
Aspect ratio	16:9
Optimum resolution	1920 x 1080 @ 60 Hz
Response time (typical)	5 ms (Grey to Grey)*
Brightness	250 cd/m <sup>2</sup>
Contrast ratio (typical)	1000:1
SmartContrast	20,000,000:1
Pixel pitch	0.248 x 0.248 mm
Viewing angle	178° (H)/178° (V) @ C/R > 10
Picture enhancement	SmartImage
Display colours	16.7 M
Scanning Frequency sRGB	30 - 83 kHz (H) / 56 - 76 Hz (V) Yes

### Connectivity

Signal Input	DisplayPort DVI-D (digital, HDCP) VGA (Analogue)
USB	USB 2.0 x 4
Sync Input	Separate Sync Sync on Green
Audio (In/Out)	PC audio-in Headphone out

### Convenience

Built-in Speakers	2 W x 2
User convenience	SmartImage Volume PowerSensor Menu Power On/Off
Control software	SmartControl Premium
OSD Languages	Brazil Portuguese Czech Dutch English Finnish French German Greek Hungarian Italian Japanese Korean Polish Portuguese Russian Simplified Chinese Spanish Swedish Traditional Chinese Turkish Ukrainian
Other convenience	Kensington lock VESA mount (100 x 100 mm)
Plug and Play Compatibility	DDC/CI Mac OS X sRGB Windows 8.1 / 8 / 7

### Stand

Height adjustment	130 mm
Pivot	90 degree
Swivel	-175/+175 degree
Tilt	-5/20 degree

### Power

ECO mode	13.4 W (typ.)
On mode	14.79 W (typ.) (EnergyStar 6.0 test method)
Standby mode	< 0.3 W (typ.)
Off mode	Zero watts with AC switch
Power LED indicator	Operation - White Standby mode - White (flashing)
Power supply	Built-in 100-240 VAC, 50-60 Hz

### Dimensions

Product with stand (max height)	511 x 483 x 227 mm
Product without stand (mm)	511 x 319 x 52 mm
Packaging in mm (W x H x D)	565 x 422 x 184 mm

### Weight

Product with stand (kg)	4.90 kg
Product without stand (kg)	3.10 kg
Product with packaging (kg)	6.78 kg

### Operating conditions

Temperature range (operation)	0°C to 40°C °C
Temperature range (storage)	-20°C to 60°C °C
Relative humidity	20%–80% %
Altitude	Operation: +12,000 ft (3658 m), Non-operation: +40,000 ft (12,192 m)
MTBF	30,000 hour(s)

### Sustainability

Environmental and energy	EnergyStar 6.0 PowerSensor EPEAT Gold* TCO edge RoHS
Recyclable packaging material	100 %
Post-consumer recycled plastic	65%
Specific Substances	PVC/BFR free housing Mercury free Lead free

### Compliance and standards

Regulatory Approvals	BSMI CE Mark cETLus FCC Class B GOST
----------------------	--

SASO  
SEMKO  
TCO 6.0  
TUV Ergo  
TUV/GS  
WEEE

Foot  
Finish                      Black  
                                    Texture

**What's in the box?**

Monitor with stand      yes  
Cables                      VGA, DVI, Audio, Power  
User Documentation      yes

**Cabinet**

Front bezel                Black  
Rear cover                Black

- \* "AH-IPS" word mark/trademark and related patents on technologies belong to their respective owners.
- \* EPEAT Gold or Silver is valid only where Philips registers the product. Please visit [www.epeat.net](http://www.epeat.net) for registration status in your country.
- \* Response time value equal to SmartResponse



data subject to change  
2018, October 26  
Version: 4.1.1  
EAN: 8712581724573

© 2018 Koninklijke Philips N.V.  
All rights reserved.

Specifications are subject to change without notice. Trademarks are the property of Koninklijke Philips N.V. or their respective owners.

[www.philips.com](http://www.philips.com)