

CAMERA OVERVIEW – LINE SCAN

SINGLE LINE SCAN	RESOLUTION (PIXELS)	MAX LINE RATE (kHz)	PIXEL SIZE (µm)	DATA RATE (MP/S)	DATA FORMAT	INTERFACE	PART # MONO	PART# COLOR
Piranha3 8k	8192 x 1	33.7 kHz	7 µm	276	8, 12 bit	CL	P3-8x-08k40	
Piranha3 12k	12288 x 1	23.5 kHz	5 µm	289	8, 12 bit	CL	P3-8x-12k40	
Piranha3 16k	16384 x 1	40 / 72 kHz	3.5 µm	655 / 1180	8, 12 bit	CL / HSLink	P3-80-16k40 / P3-S0-16k40	
Piranha4 8k	8192 x 2	70 kHz	7 µm	573	8, 10, 12 bit	CL	P4-CM-08k070	
DUAL LINE SCAN								
Spyder3 1k	1024 x 2	36 kHz	14 µm	37	8, 12 bit	GigE/CL	SG-14-01K40 / S3-14-01K40	
Spyder3 1k	1024 x 2	68 kHz	14 µm	70	8, 12 bit	GigE/CL	SG-14-01K80 / S3-24-01K40	
Spyder3 2k	2048 x 2	18 kHz	14 µm	37	8, 12 bit	GigE/CL	SG-14-02K40 / S3-14-02K40	
Spyder3 2k	2048 x 2	36 kHz	14 µm	74	8, 12 bit	GigE/CL	SG-14-02K80 / S3-24-02K40	
Spyder3 4k	4096 x 2	18.5 kHz	10 µm	76	8, 12 bit	GigE/CL	SG-14-04K80 / S3-24-04K40	
COLOR LINE SCAN								
Spyder3 Color 2k	2048 x 2	18 kHz	14 µm	37	8 bit, 12 bit	GigE/CL	SG-34-02K80	
Spyder3 Color 4k	4096 x 2	9 kHz	10 µm	37	8 bit	GigE/CL	SG-34-04K80	
Piranha Color 2k	2048 x 3	22.7 / 32.3 kHz	14 µm	139 / 198	8, 12 bit	CL	PC-30-02K60 / PC-30-02K80	
Piranha Color 4k	4096 x 3	12.1 / 17.6 kHz	10 µm	149 / 216	8, 12 bit	CL	PC-30-04K60 / PC-30-04K80	
Piranha4 Color 8k	8192 x 2	50 kHz	7 µm	409	8, 10 bit	CL	P4-CC-08K050	
PIRANHA ES (ENHANCED SENSITIVITY) - TDI								
Piranha ES 4k	4096 x 32	68.6 kHz	7 µm	281	8, 12 bit	CL	ES-80-04K40	
Piranha ES 8k	8192 x 32	34 / 68.6 kHz	7 µm	279 / 562	8, 12 bit	CL	ES-80-08K40 / ES-80-08K80	
Piranha ES 4k	4096 x 16	55 / 110 kHz	14 µm	225 / 451	8, 12 bit	CL	ES-82-04K80	
Piranha ES 12k	12000 x 64	90 kHz	5.2 µm	1080	8, 10, 12 bit	HS Link	ES-S0-12K40	
PIRANHA HS (HIGH SENSITIVITY) - TDI								
Piranha HS 2k	2048 x 64	52 kHz	13 µm	106	8, 10 bit	CL	HS-4x-02K30	
Piranha HS 4k	4096 x 96	36 / 68.6 kHz	7 µm	147 / 281	8, 12 bit	CL	HS-40-04K40 / HS-80-04K40	
Piranha HS 8k	8192 x 96	34 / 68.6 kHz	7 µm	279 / 562	8, 12 bit	CL	HS-80-08K40 / HS-80-08K80	
Piranha HS 4k	4096 x 48	55 / 110 kHz	14 µm	225 / 451	8, 12 bit	CL	HS-82-04k40 / HS-82-04K80	
Piranha HS NIR 8k	8192 x 256	34 kHz	7 µm	279	8, 12 bit	CL	HN-80-08K40	
Piranha HS 12k	12000 x 256	90 kHz	5.2 µm	1080	8, 10, 12 bit	HSLink	HS-S0-12K40	



Piranha3 16k



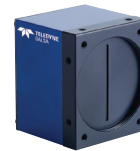
Piranha4



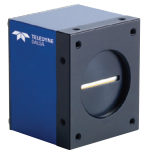
Piranha Color



Piranha HS NIR 8k



Spyder3 CL



Spyder3 GigE

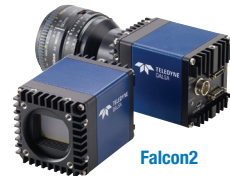
CAMERA OVERVIEW – AREA SCAN

CAMERA	RESOLUTION	FRAME RATE	DYNAMIC RANGE	PIXEL PITCH	DATA FORMAT	PART # MONO	PART # COLOR
Genie M640-1/3 / C640	640 x 480	64 fps	54 dB	7.4 µm	8, 10 bit	CR-GM03-M640x	CR-GC03-C640x
Genie M640-1/2 / C640	640 x 480	64 fps	54 dB	9.9 µm	8, 10 bit	CR-GM00-M640x	CR-GC00C640x
Genie M1024 / C1024	1024 x 768	20 fps	54 dB	4.65 µm	8, 10 bit	CR-GM00-M102x	CR-GC00-C102x
Genie M1280 / C1280	1280 x 960	24 fps	52 dB	3.75 µm	8, 10 bit	CR-GM00-M128x	CR-GC00-C128x
Genie M1400-1/2 / C1400	1360 x 1024	15 fps	54 dB	4.65 µm	8, 10 bit	CR-GM00-M140x	CR-GC00-C140x
Genie M1410-2/3 / C1410	1360 x 1024	22 fps	54 dB	6.45 µm	8, 10 bit	CR-GM03-M141x	CR-GC00-C140x
Genie M1600 / C1600	1600 x 1200	15 fps	54 dB	4.4 µm	8, 10 bit	CR-GM00-M160x	CR-GC00-C160x
Genie HM640 / HC640	640 x 480	300 fps	48 dB	7.4 µm	8-bit	CR-GM00-H640x	CR-GC00-H640x
Genie HM1024 / HC1024	1024 x 768	117 fps	48 dB	7.4 µm	8-bit	CR-GM00-H102x	CR-GC00-H102x
Genie HM1400 / HC1400	1400 x 1024	75 fps	48 dB	7.4 µm	8, 10 bit	CR-GM00-H140x	CR-GC00-H140x
Genie HM1400 XDR	1400 x 1024	75 fps	55 dB	7.4 µm	8, 10 bit	CR-GM01-H140x	
Genie TS-M2500 / C2500	2560 x 2048	29 fps	58 dB	6 µm	8, 10 bit	G2-GM10-T250x	G2-GC10-T250x
Genie TS-M3500 / C3500	3520 x 2200	19 fps	58 dB	6 µm	8, 10 bit	G2-GM10-T350x	G2-GC10-T350x
Genie TS-M4096 / C4096	4096 x 3072	12 fps	58 dB	6 µm	8, 10 bit	G2-GM10-T409x	G2-GC10-T409x

Please note: all Genie Color models are RGB 32-bit, UYVY, YUY2 or Raw Bayer



Genie TS



Falcon2



Icon

Falcon VGA300 HG / Color	640 x 480	300 fps	50 dB	7.4 µm	8, 10 bit	FA-21-3HK3H	FA-23-3HK3H
Falcon 1M120 HG / Color	1024 x 1024	120 fps	50 dB	7.4 µm	8, 10 bit	FA-21-1M120	FA-23-1M120
Falcon 1.4M100 HG / Color	1400 x 1024	100 fps	50 dB	7.4 µm	8, 10 bit	FA-21-01M1H	FA-23-01M1H
Falcon 1.4M100 XDR / Color	1400 x 1024	100 fps	57 dB	7.4 µm	8, 10 bit	FA-20-01M1H	FA-22-01M1H
Falcon 4M30 / Color	2352 x 1728	31 fps	56 dB	7.4 µm	8, 10 bit	PT-21-04M30	PT-42-04M30
Falcon 4M60 / Color	2352 x 1728	62 fps	56 dB	7.4 µm	8, 10 bit	PT-41-04M60	PT-42-04M60
Falcon2 4M / Color	2432 x 1728	168 fps	58 / 50 dB	6 µm	8, 10 bit	FA-80-4M180-01-R	FA-81-4M180-01-R
Falcon2 8M / Color	3328 x 2502	90 fps	58 / 50 dB	6 µm	8, 10 bit	FA-80-8M100-01-R	FA-81-8M100-01-R
Falcon2 12M / Color	4096 x 3072	58 fps	58 / 50 dB	6 µm	8, 10 bit	FA-80-12M1H-01-R	FA-81-12M1H-01-R

USER PROGRAMMABLE CAMERAS* TI® DAVINCI® 3740, WINDOWS® CE 6.0 BASED

Icon M640 / C640	640 x 480	60 fps	57 dB	7.4 µm	8, 10 bit	K1-EM0B-SKT10	K1-EC0B-SKT10
Icon M1024 / C1024	1024 x 768	24 fps	55 dB	3.75 µm	8, 10 bit	K1-EM0B-SKT20	K1-EC0B-SKT20
Icon M1280 / C1280	1280 x 960	24 fps	55 dB	3.75 µm	8, 10 bit	K1-EM0B-SKT30	K1-EC0B-SKT30
Icon M1600	1280 x 960	15 fps	56 dB	4.4 µm	8, 10 bit	K1-EM0B-SKT40	

* Includes camera, cables, Sapera Embedded SDK and other accessories