

C
2

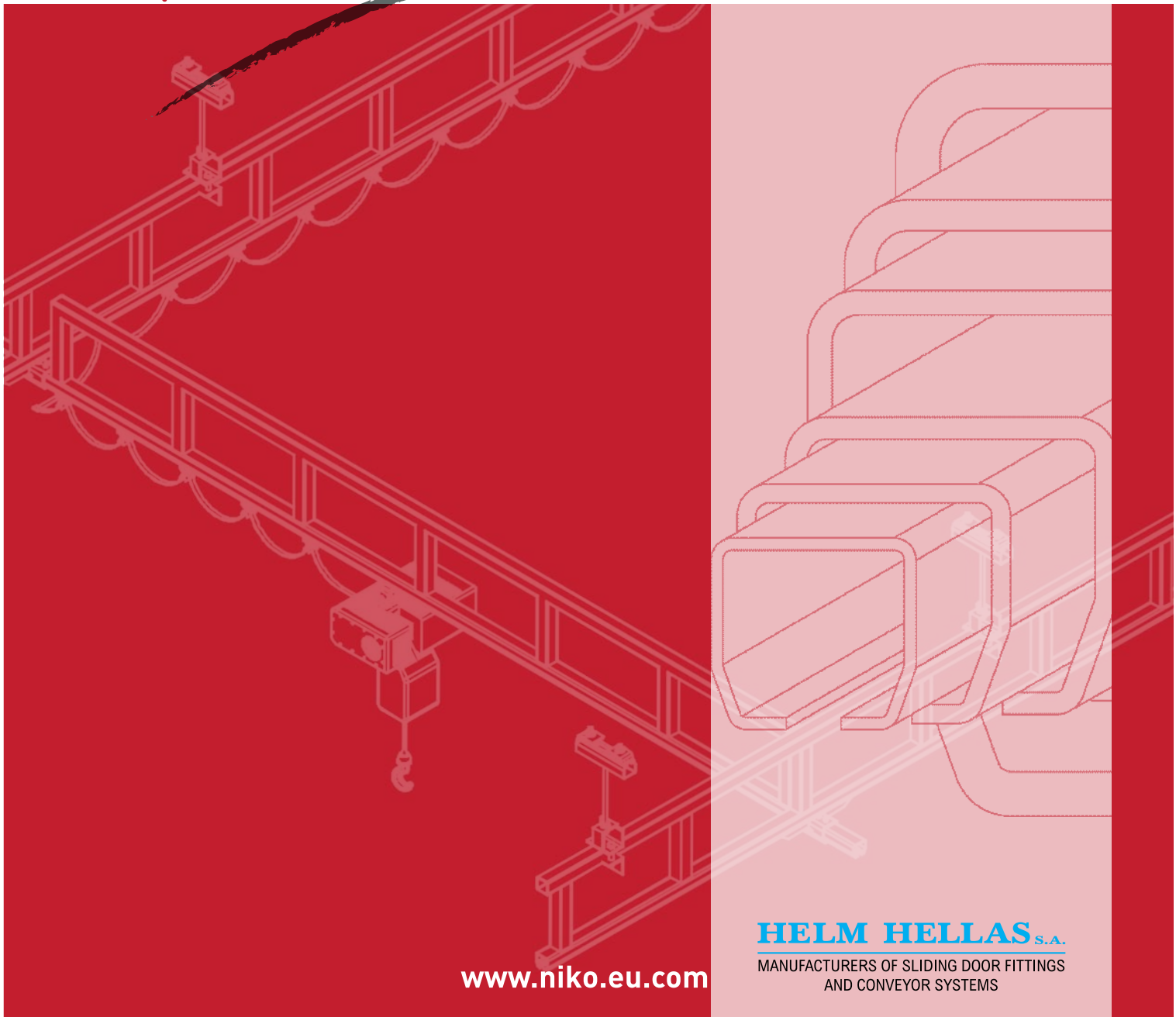
Light Crane Systems



Product Catalogue

Technical Information
Component Specification

NIKO ... Quality in Motion



www.niko.eu.com

HELM HELLAS S.A.

MANUFACTURERS OF SLIDING DOOR FITTINGS
AND CONVEYOR SYSTEMS

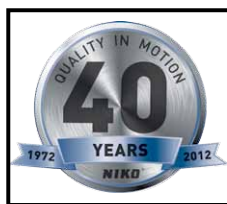


Company Profile

Since 1972 Helm Hellas S.A. is focused in designing developing, producing and marketing high quality sliding door fittings and overhead conveyor systems at the right price. Over 90 % of our products are exported to more than 60 countries worldwide with offices and warehouses in 7 countries worldwide.

Our program range includes more than 2.000 different assemblies & components. Our team of highly qualified engineers are continuously working to improve our current product portofolio & extend it according to market requirements.

Helm Hellas S.A. enforces a continuous quality control program and is certified according to ISO:9001 and ISO:14000 .

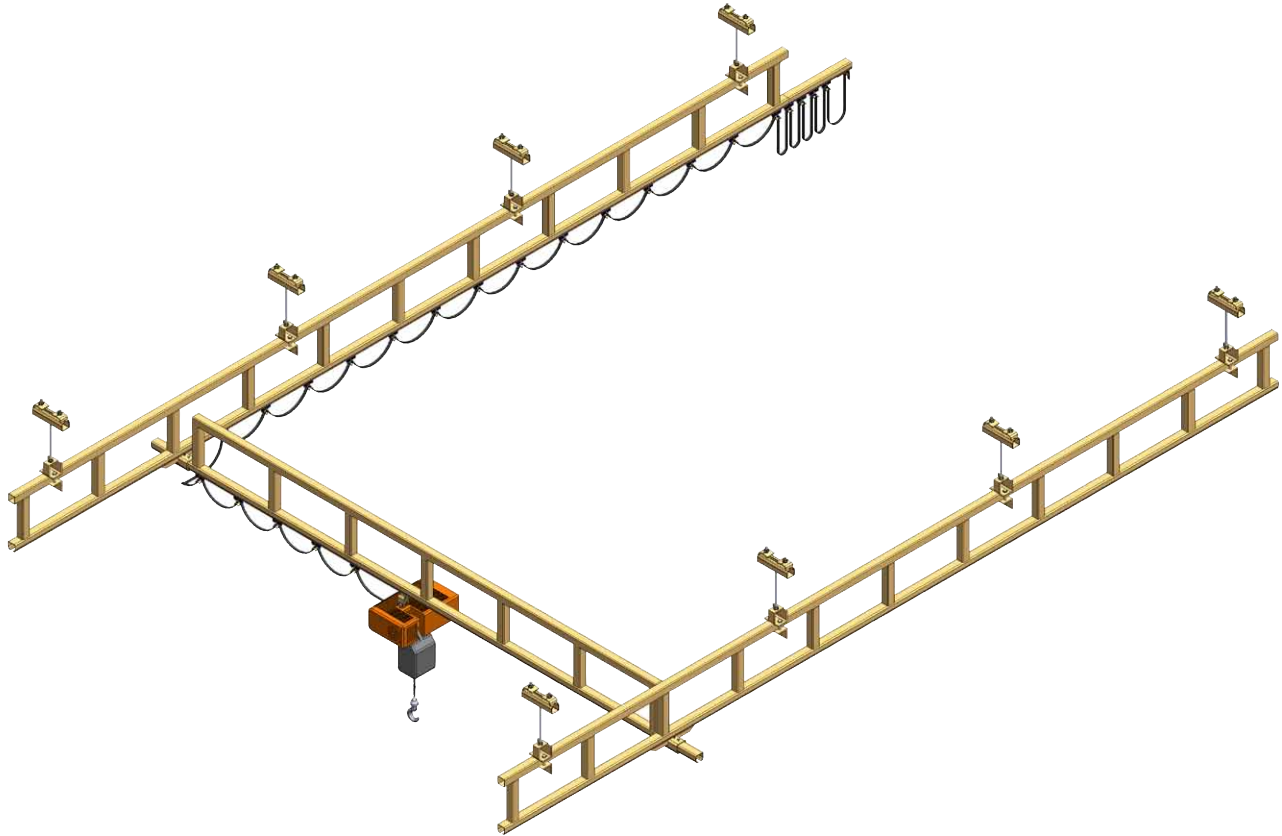


Index

| | | |
|--|------|-------|
| Introduction | Page | 4 |
| Light crane Specifications | Page | 5 |
| Floor Mounted Crane with plain long travel tracks | Page | 6 |
| Floor Mounted Crane with reinforced long travel tracks | Page | 7 |
| Ceiling Mounted Crane with plain long travel tracks | Page | 8 |
| Ceiling Mounted Crane with reinforced long travel tracks | Page | 9 |
| Light Crane main Components | Page | 10 |
| Multiple Bridge Cranes | Page | 11 |
| Festoon & Conductor Options | Page | 12 |
| Power Driven Trolleys | Page | 13 |
| Telescopic Monorail and Cranes | Page | 14 |
| Interlocks | Page | 15 |
| Manipulator | Page | 15 |
| Conveyors Systems | Page | 16 |
| Jib Cranes | Page | 17 |
| Application Photos | Page | 18-20 |
| Components Specifications | Page | 21-47 |
| Track profiles | Page | 22-23 |
| Brackets & Support Joints | Page | 24-34 |
| Trolleys | Page | 34-38 |
| Load carriers | Page | 38-40 |
| End carriages | Page | 40-42 |
| Bridge Interlocks | Page | 43 |
| Track transfer assembly | Page | 44 |
| Track end stops | Page | 45 |
| Cable trolleys | Page | 46 |

NIKO Light Cranes – A versatile and economic solution for loads up to 2.000 kg and 10 meter span!

NIKO Light Crane System provides an ergonomic and cost effective solution to conventional overhead crane systems particularly when there is a height and space restriction. Versatile and reliable overhead handling can be achieved for a variety of applications using the NIKO modular design. The robust design of our components and the high standards of manufacturing guarantees long life with little or no maintenance requirements. Our program range is consisted of sliding door fittings, overhead conveyor systems, festoon systems, fall arrest systems and light cranes.

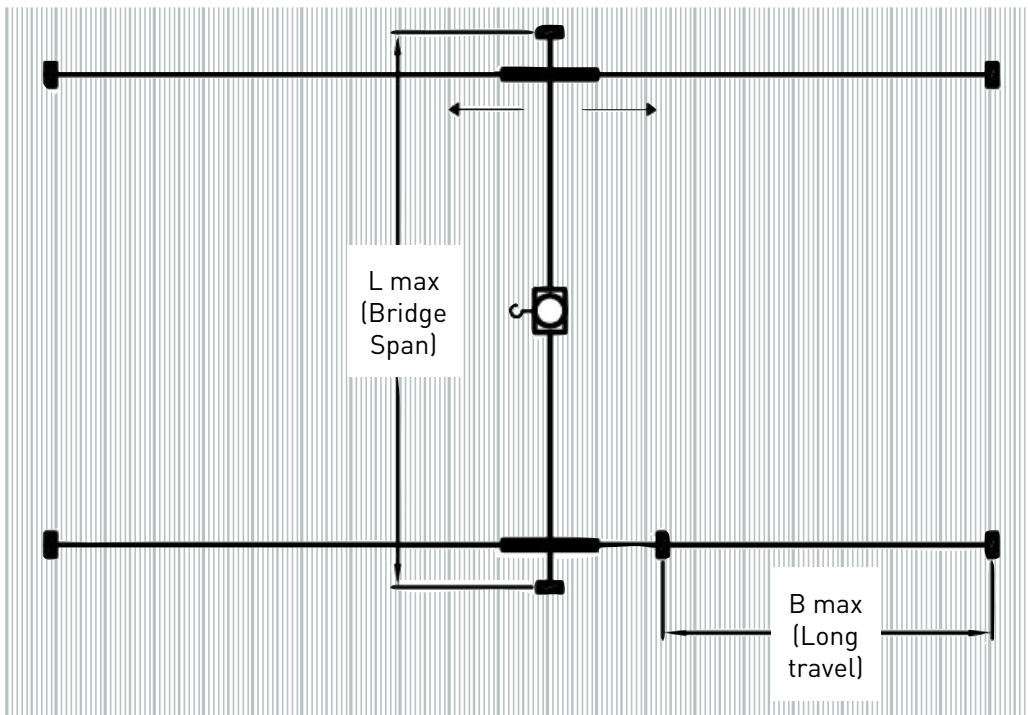


LIGHT CRANE SYSTEMS

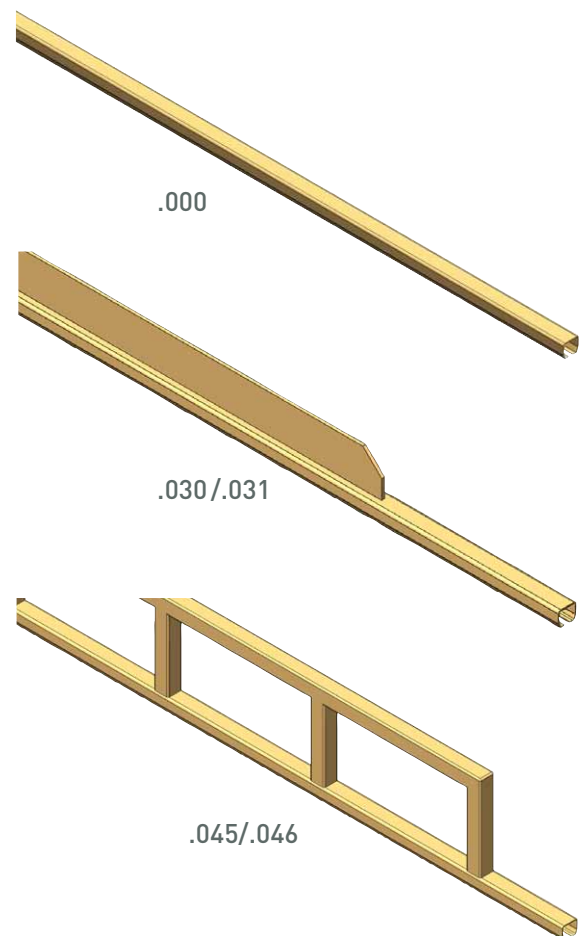
Main Characteristics

- ✓ Loads up to 2.000 kg
- ✓ Bridge Spans up to 10 meters
- ✓ Modular design allows extendibility and relocatability
- ✓ Cost Effective
- ✓ Easy to install using a variety of supporting brackets.
- ✓ Large range of mounting options
- ✓ Connectivity with future or existing overhead conveyor system
- ✓ Telescopic cranes
- ✓ Manual or Electric Travel
- ✓ Floor or Ceiling Mounted cranes.
- ✓ Components available in Gold or Silver Finish.
- ✓ Stainless Steel Cranes.

Light crane Specifications



| Capacity (Kg) | NIKO Profile No. | Bridge Span L max (m) | Long travel supporting distance B max (m) |
|---------------|------------------|-----------------------|---|
| 80 | 23.000 | 1.50 | 1,00 |
| | 23.030 | 4.00 | 3,50 |
| 125 | 24.000 | 1.80 | 1,40 |
| | 24.030 | 5.00 | 4,40 |
| 250 | 24.045 | 9.00 | 8,00 |
| | 25.000 | 2.50 | 1,90 |
| | 25.030 | 6.00 | 5,20 |
| 500 | 25.045 | 8,50 | 7,00 |
| | 25.046 | 10,00 | 9,00 |
| | 26.000 | 2,50 | 1,80 |
| 750 | 26.030 | 6,00 | 5,20 |
| | 26.045 | 10,00 | 9,00 |
| | 26.000 | 1,80 | 1,80 |
| 1000 | 26.030 | 6,00 | 5,00 |
| | 26.045 | 8,00 | 7,00 |
| | 26.046 | 10,00 | 9,00 |
| | 27.000 | 3,00 | 2,00 |
| 1600 | 27.030 | 6,00 | 6,00 |
| | 27.045 | 10,00 | 9,00 |
| | 27.000 | 1,50 | 1,00 |
| | 27.030 | 3,50 | 2,70 |
| 2000 | 27.045 | 8,50 | 7,00 |
| | 27.046 | 10,00 | 9,00 |
| | 27.045 | 7,00 | 6,00 |
| | 27.046 | 9,00 | 8,00 |

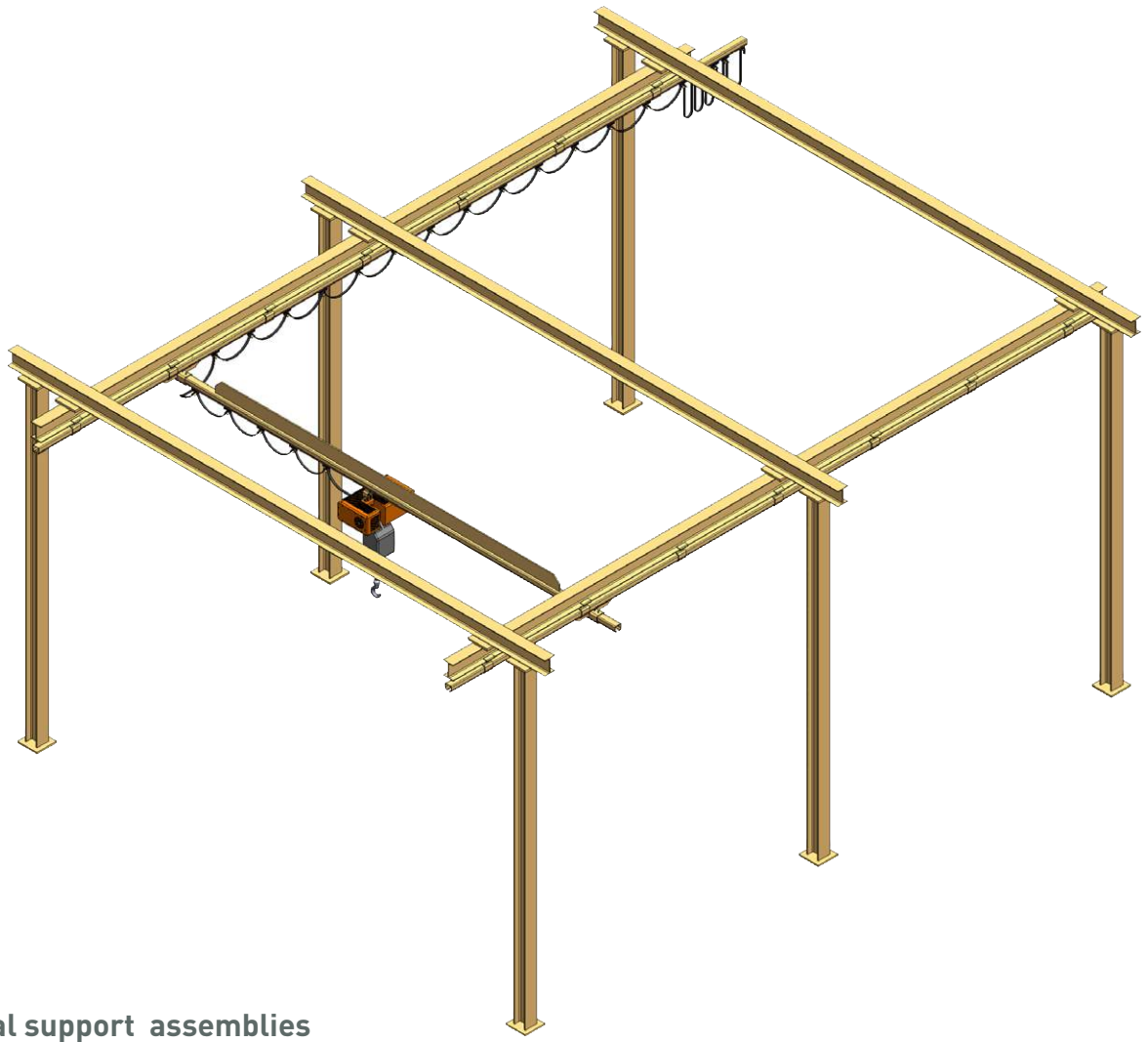


LIGHT CRANE SYSTEMS

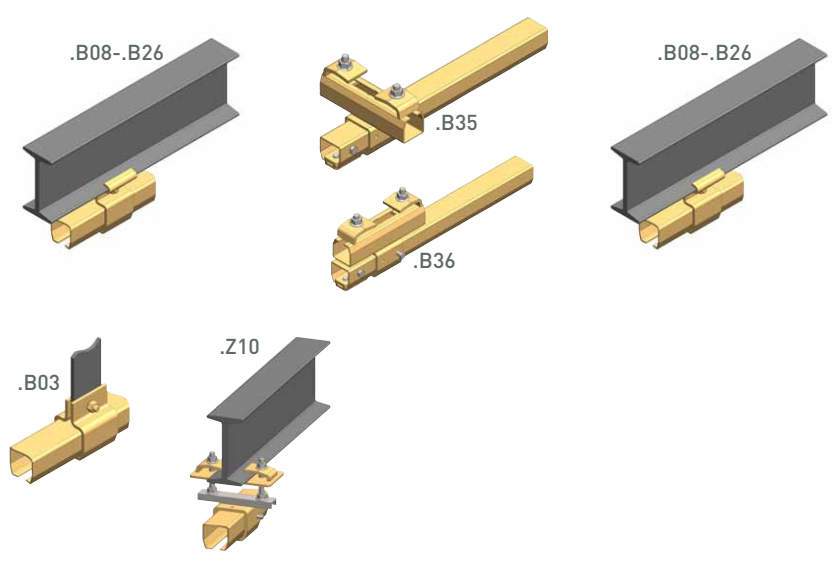
Floor Mounted Crane with plain long travel tracks

Floor mounted cranes are particularly useful when the roof cannot support an overhead Crane. The bridge profile is usually reinforced to achieve longer spans and plain long travel track profiles can be used by supporting them direct to an I beam that runs parallelly above.

LIGHT CRANE SYSTEMS

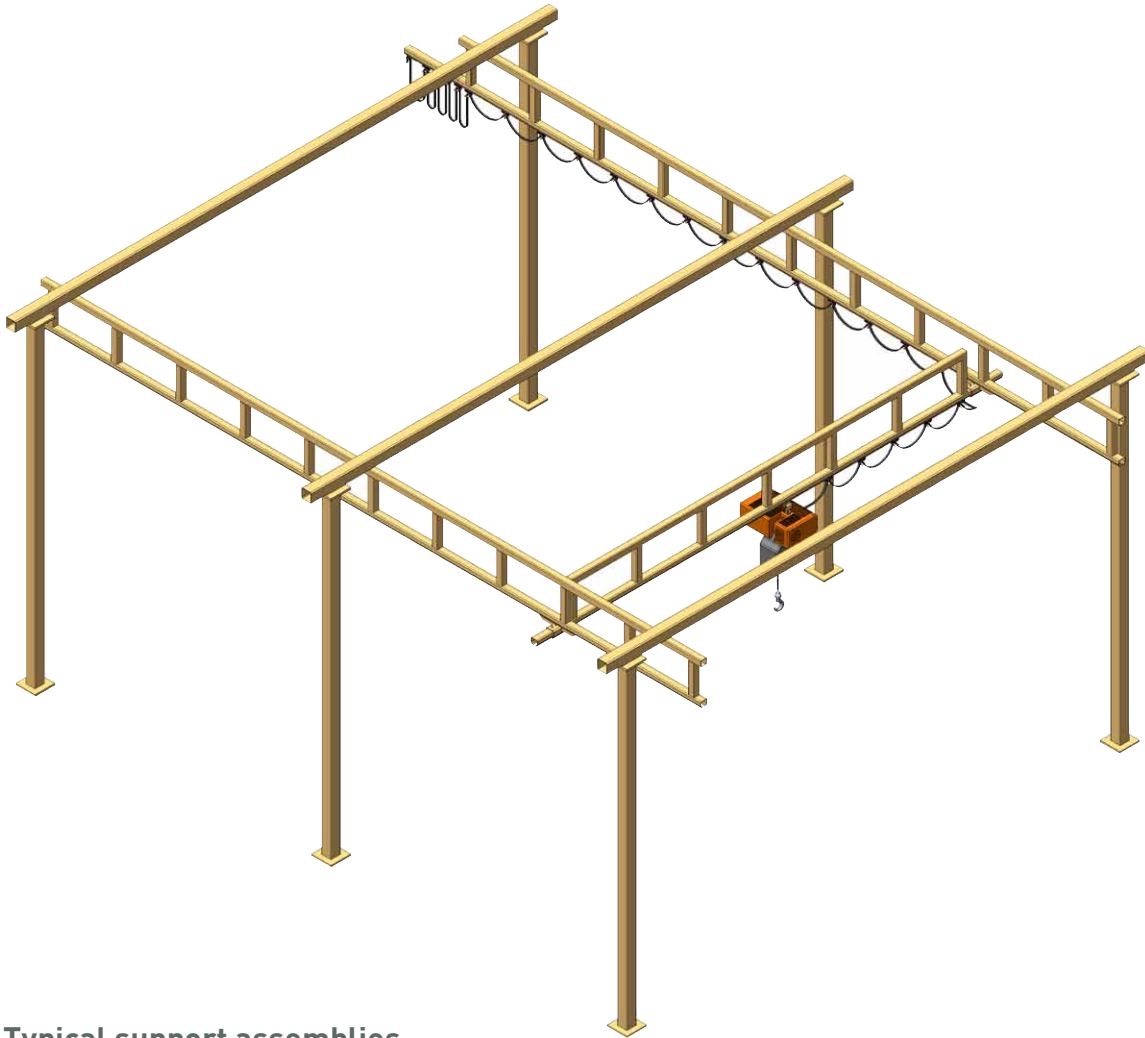


Typical support assemblies



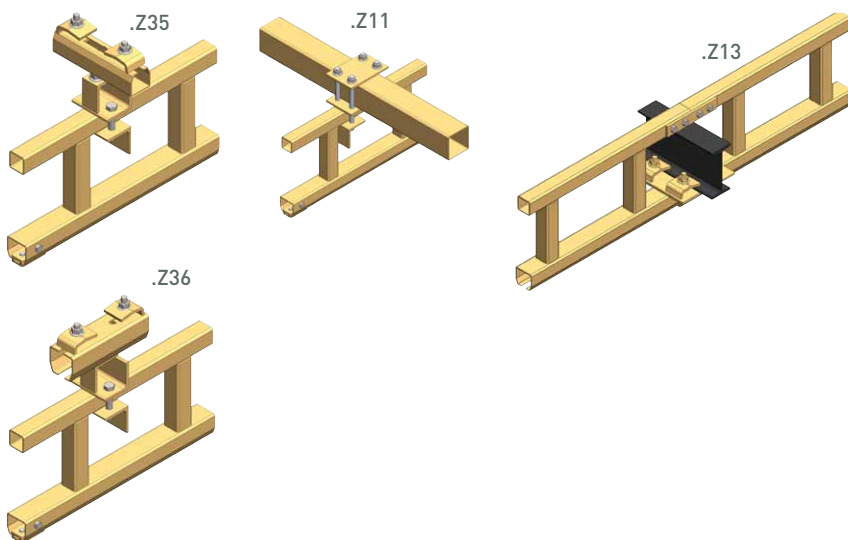
Floor Mounted Crane with Reinforced long travel tracks

By using reinforced track profiles in the long travel the support distance can be increased rendering the I beams along the track profiles unnecessary. The way installation time is also minimised.



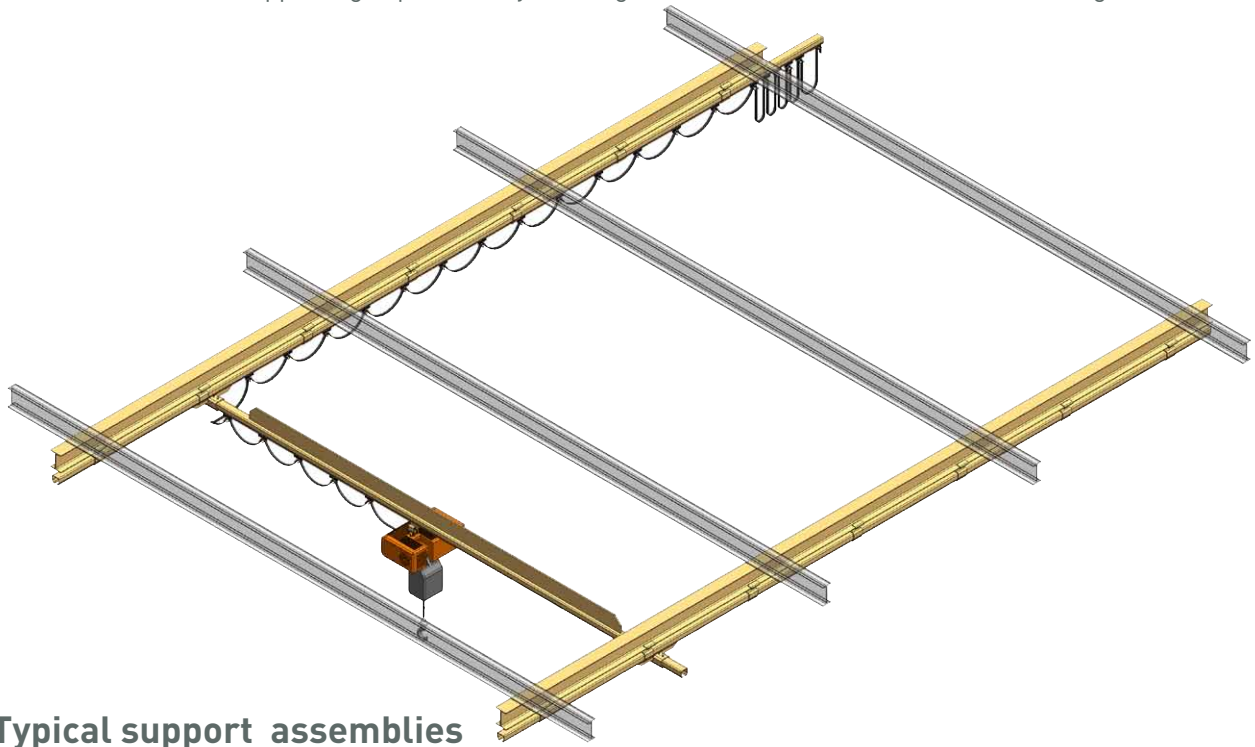
LIGHT CRANE SYSTEMS

Typical support assemblies



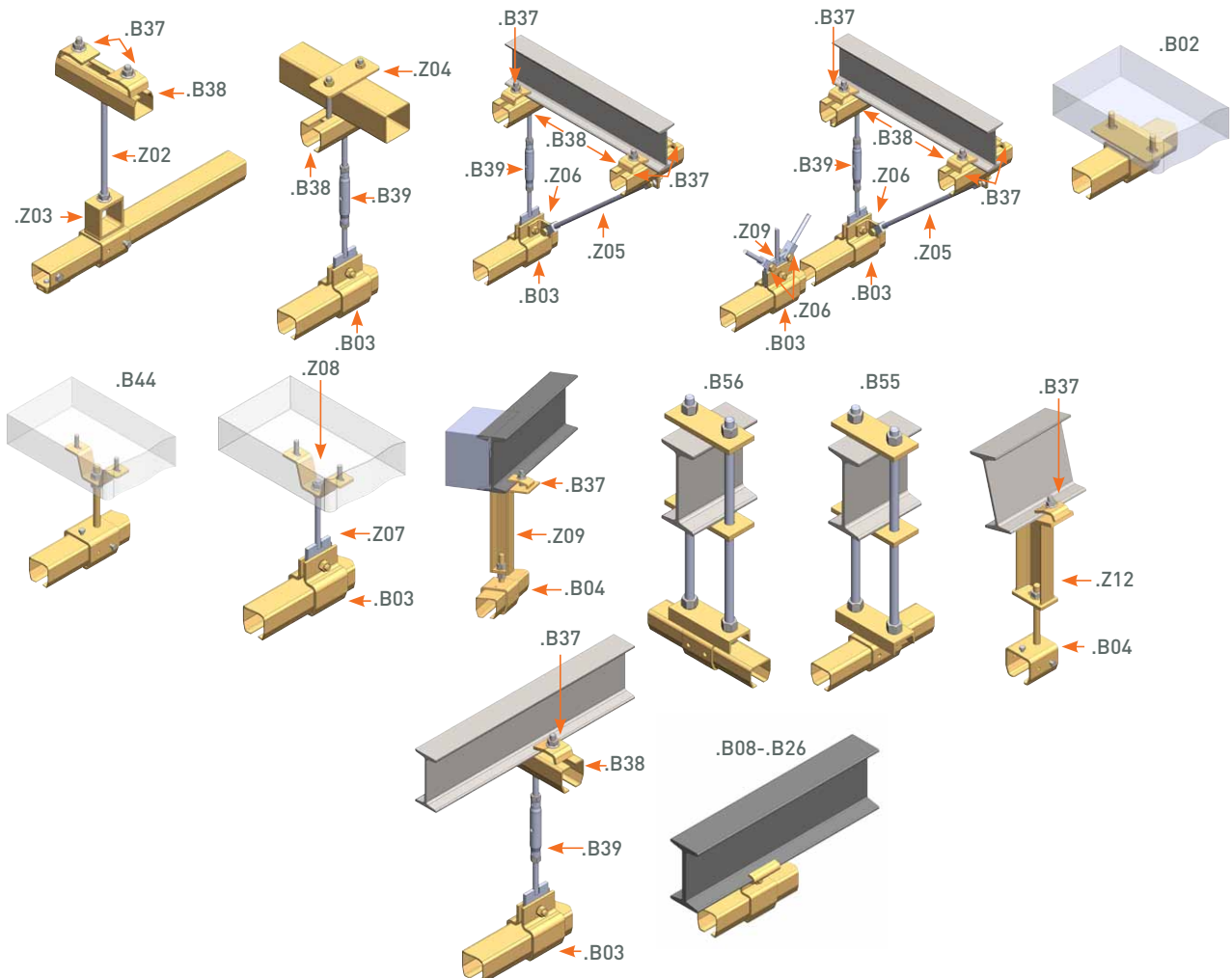
Ceiling Mounted Crane with plain long travel tracks

Ceiling mounted cranes are useful where the floor space is limited. Since the cranes are directly mounted on the ceiling and no supporting columns are necessary the working floors are kept clean for other operations. However it requires a structurally adequate ceiling structure. Plain long travel can be used when short distance supporting is possible by utilizing I beams or other structure at the ceiling.



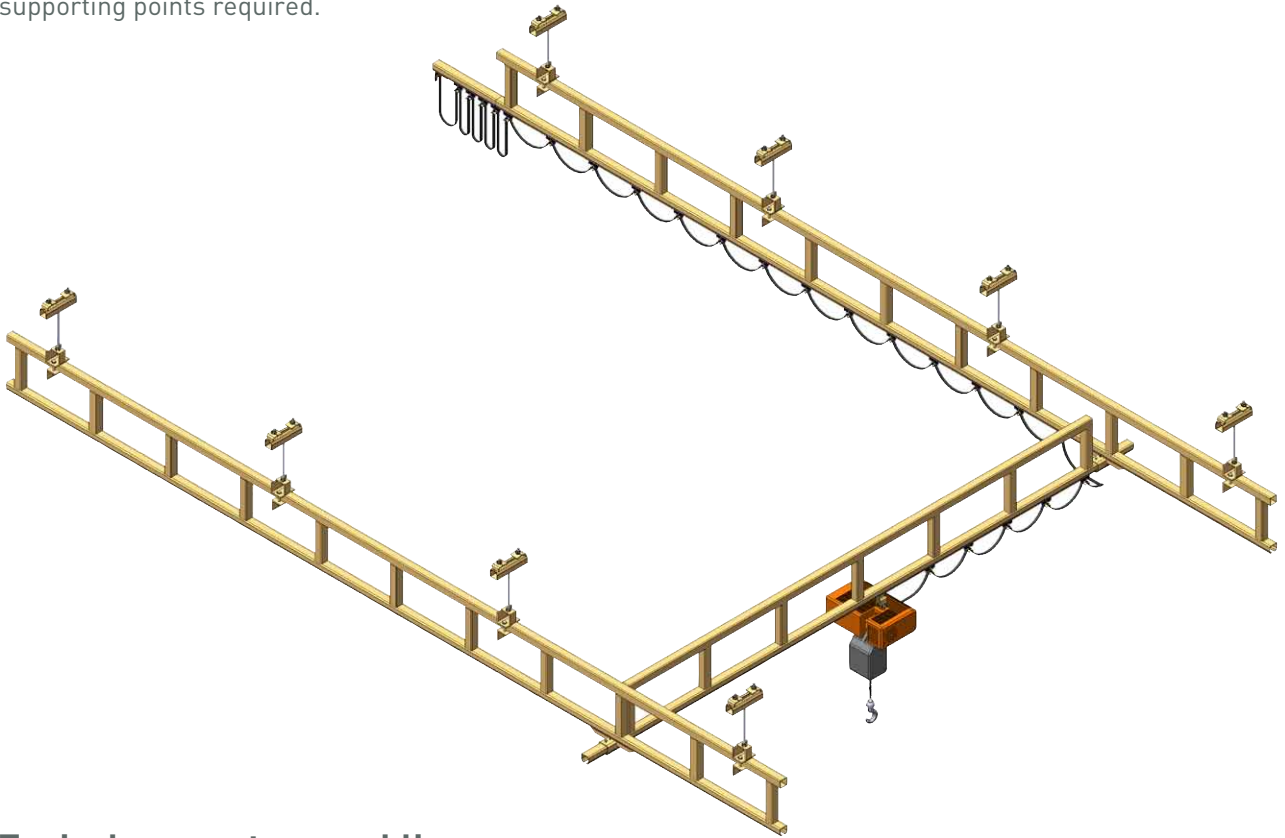
LIGHT CRANE SYSTEMS

Typical support assemblies

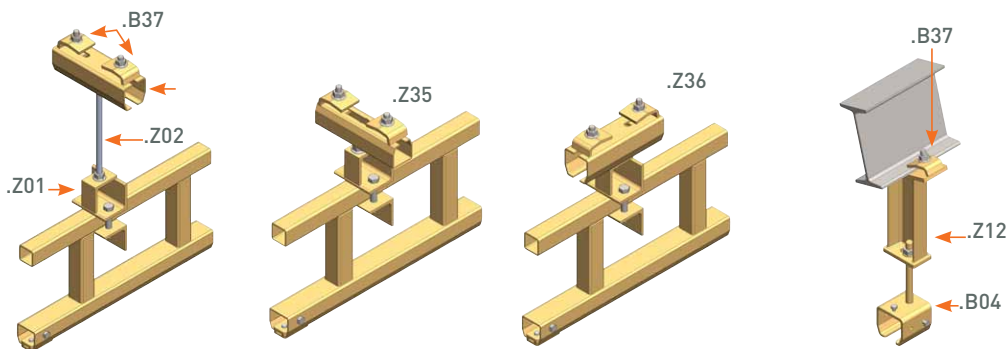


Ceiling Mounted Crane with reinforced long travel track

In the case where overhead steel structure is limited reinforced track profiles can be used to minimise the supporting points required.

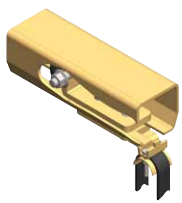
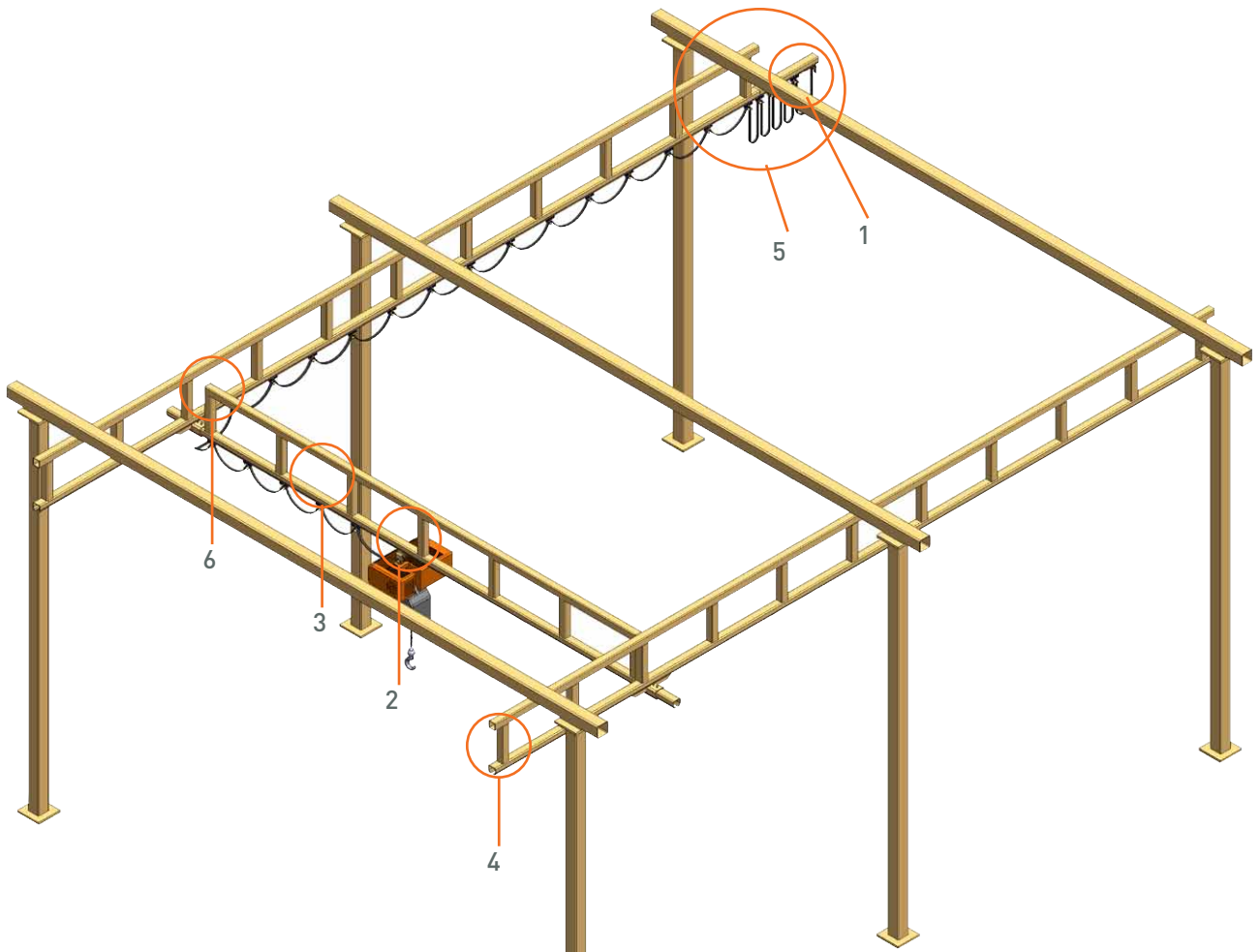


Typical support assemblies

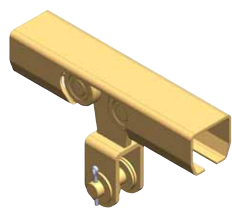


NIKO Light Crane main Components

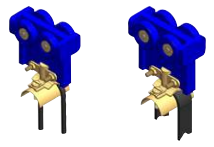
LIGHT CRANE SYSTEMS



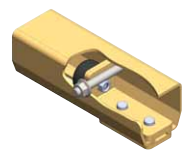
1. End stopper with cable end clamp (.K02)



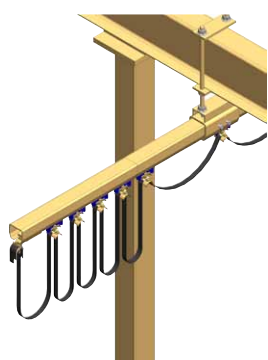
2. Trolley with Pin (T46)



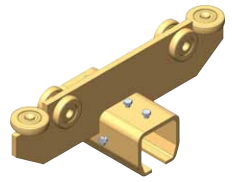
3. Cable trolley (.L00)



4. Profil End stop (.X01 P)



5. Festoon Storage
It is possible to extend one of the long travel Profiles for festoon storage purposes. This way no crane travel space is lost.

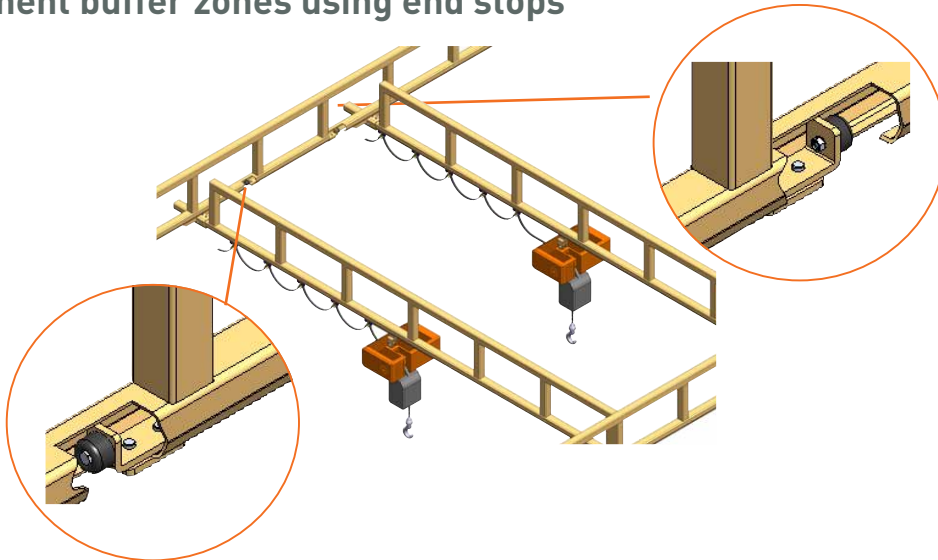


6. End carriage with Profil joint (.T54)

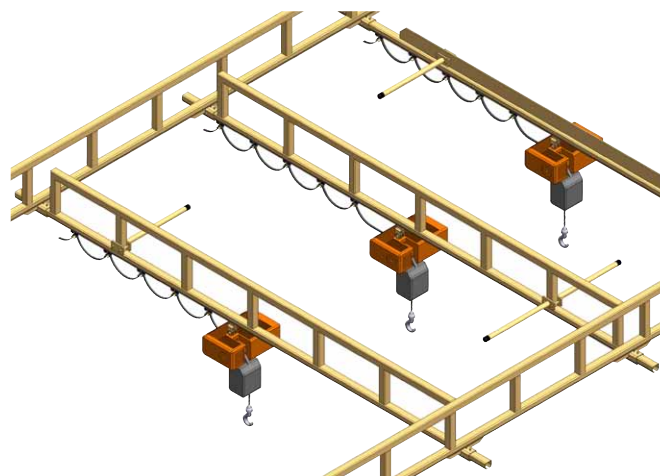
Multiple Bridge Cranes

Multiple Bridges can be used in the same long travel tracks in order to accommodate multiple operators working at the same time. To prevent one crane crashing into the other buffer zones can be created using different type of methods. This way it is also possible to use lower capacity long travel tracks with more than one bridge crane. For example a 500 kg runway can be used with 2 bridge cranes of 500 Kg each. In order to keep the distance between them, that would otherwise overload the runways, buffer zones can be created.

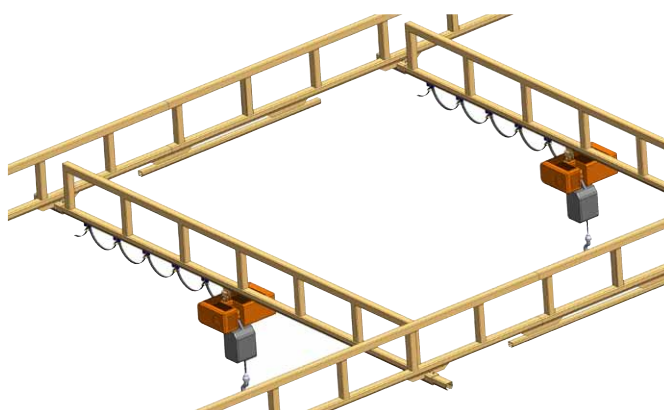
Permanent buffer zones using end stops



Buffer zones using distancers



Mobile buffer zones

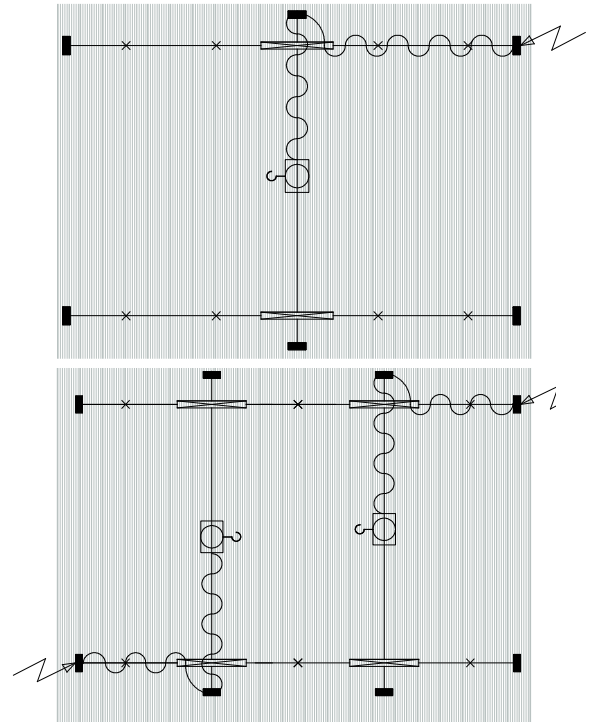
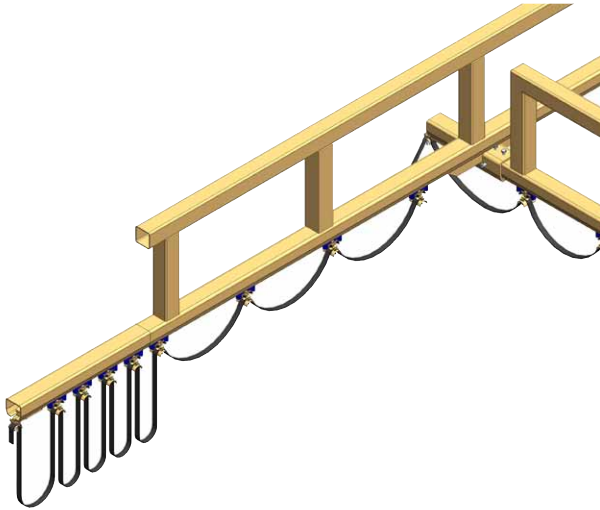


Festoon & Conductor Options

Power can be brought to the hoist or any other lifting device using festoons or conductor bars. Festoon is almost always used in the bridge profile and conductor or festoon is an option for the long travel profile.

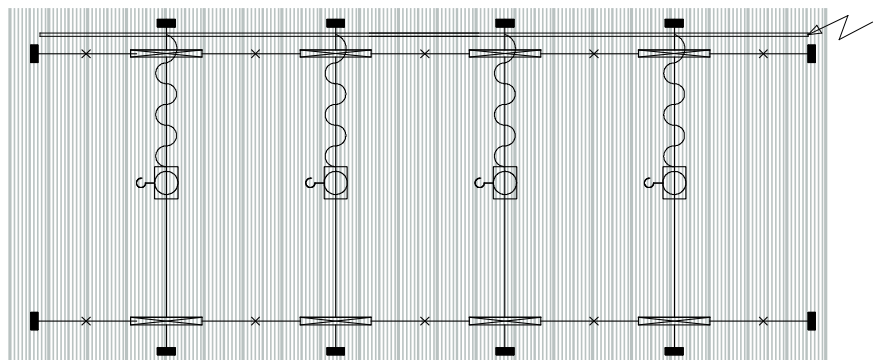
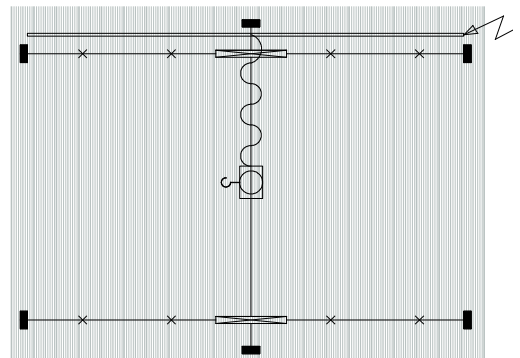
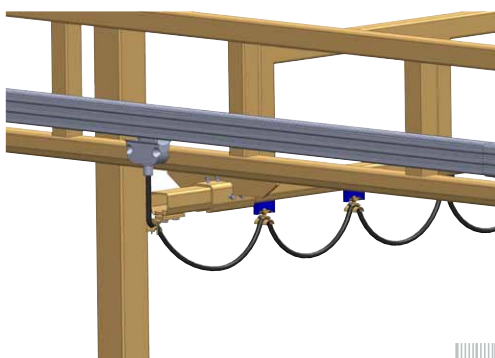
Typical Festoon arrangements

In case the distance that the festoon cable has to travel is relatively short then the bridge crane & the long travel profiles can be utilized. This requires the minimum installation and is a low cost solution.



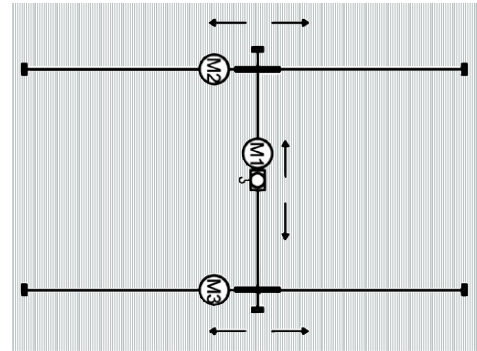
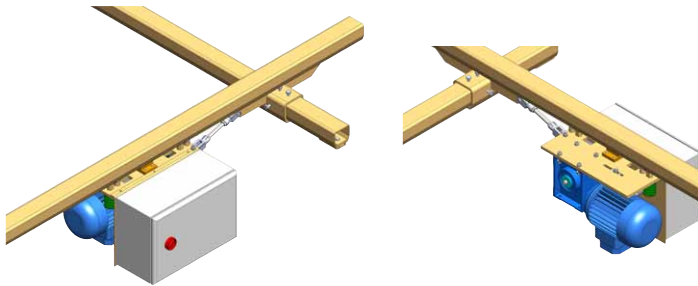
Typical Conductor Bar arrangement

In very long cranes or with more than 2 bridges conductor bars are necessary. Conductor bars also eliminate the need for festoon parking space.

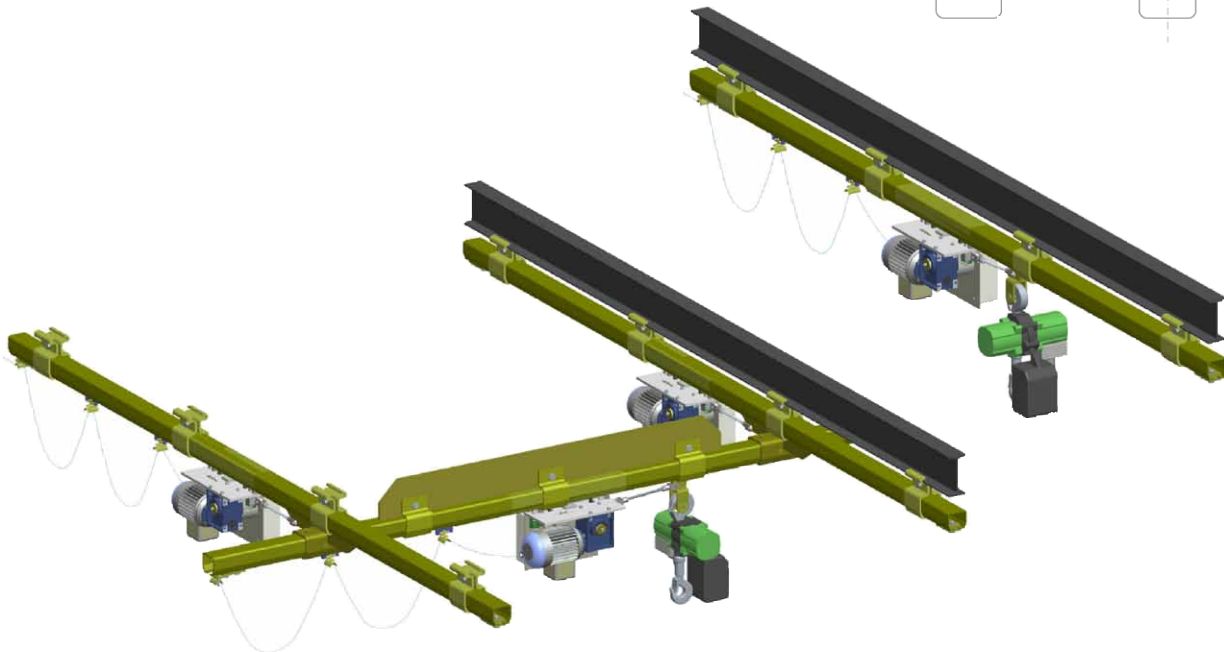
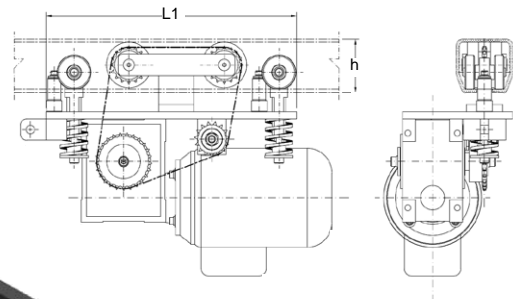


Power Driven Trolleys

The light cranes can be electrically driven using our power driven trolleys. This is particularly useful for cranes that carry loads greater than 1000 Kg. The power drive trolley operates using 4 high quality friction wheels that ensure long life and accuracy in movement. Electric travel is possible in 3 options: Electric travel only of the trolley running in the cross bridge (M 1), electric travel only of the cross bridge itself (M 2+M3) and complete electric travel in all movements (M 1+M 2+M 3). Our power driven trolleys have inverter controlled motors that allow soft start and soft stop travel.



| NIKO Profil No. | Power Driven Trolley | Transferred load (kg) | L ₁ (mm) | h (mm) |
|-----------------|----------------------|-----------------------|---------------------|--------|
| 25.000 | 25.H110 | 500 | 355 | 60 |
| 26.000 | 26.H110 | 1000 | 355 | 75 |
| 27.000 | 27.H110 | 2000 | 420 | 110 |

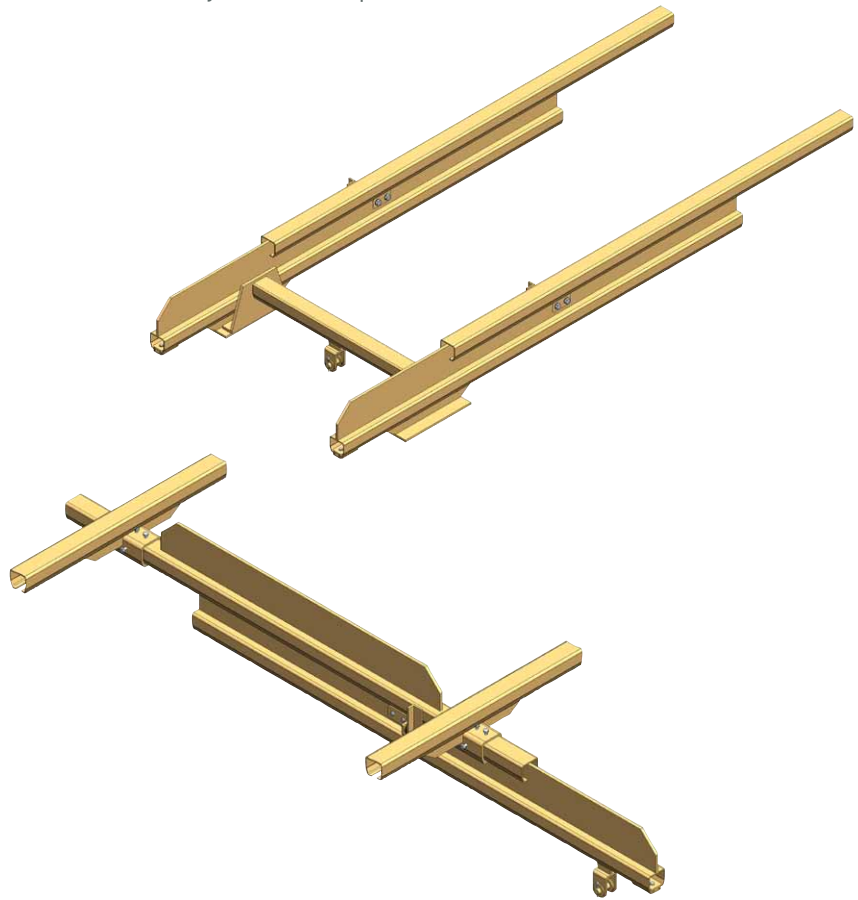
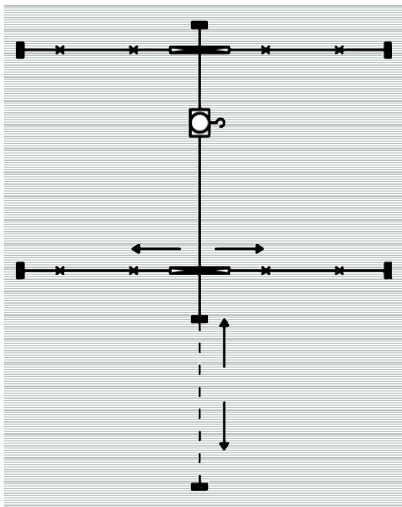


LIGHT CRANE SYSTEMS

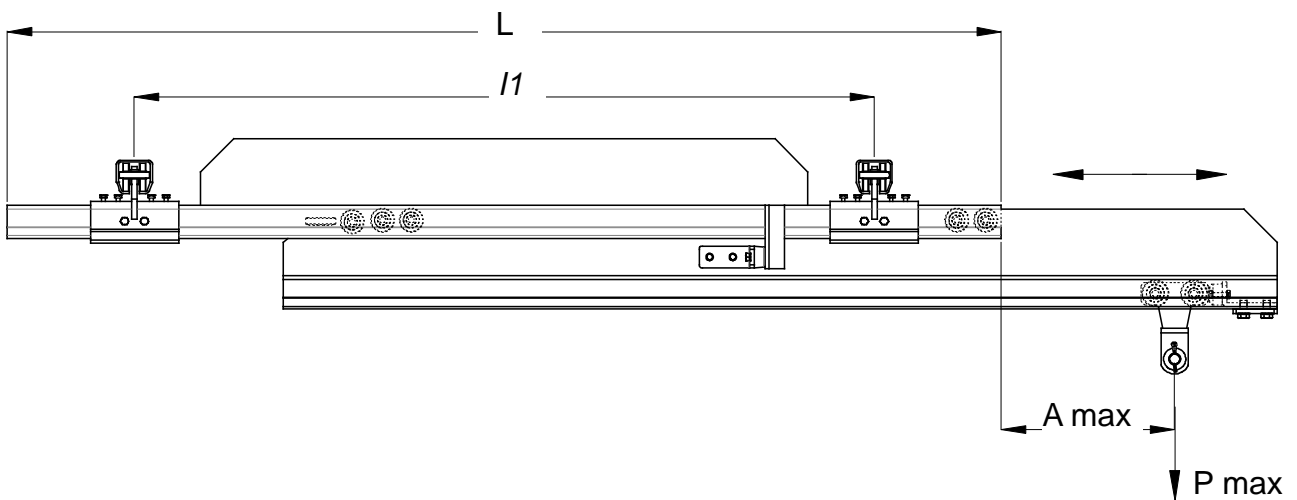
| NIKO Profil No. | Control box for for power driven trolley | Auxiliary Control box for for power driven trolley |
|----------------------|--|--|
| 25.000/26.000/27.000 | X3.110 | X3.120 |

Telescopic Monorail and Cranes

In order to cover a wider area than the supporting space structure permits a telescopic cross bridge is available. Using our components telescopic cranes are also possible which are very often installed in containers and trucks and in the automotive industry for tool suspension.



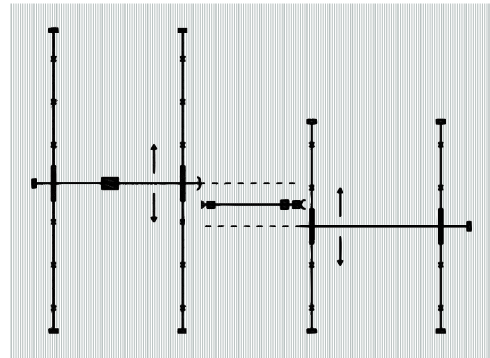
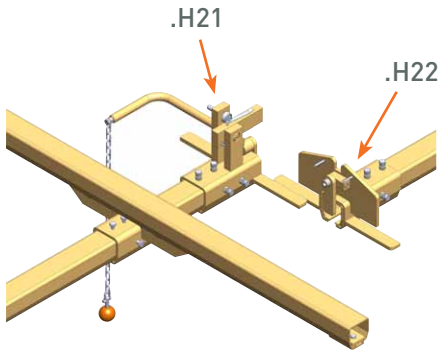
| NIKO Profil No. | 23.000 | 24.000 | 25.000 | 26.000 | 27.000 |
|-----------------|--------|--------|--------|--------|--------|
| P max Kg | 40 | 75 | 125 | 250 | 500 |
| A max mm | 1200 | 1200 | 1300 | 1300 | 1300 |



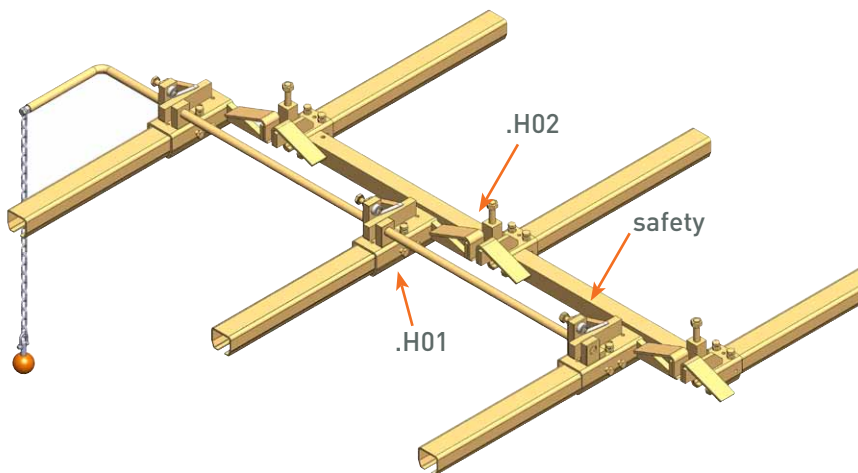
Interlocks

Interlocks are used to connect a crane with another crane or an extended conveyor system. The trolley carrying load is transferred with safety from one system to the other.

Interlock with self built safety(.H21/.H22)



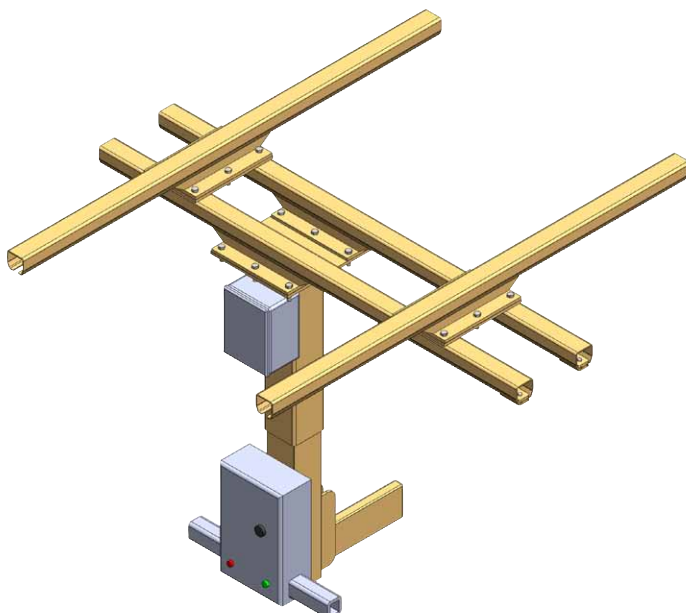
Interlock with externally built safety (.H01/.H02)



LIGHT CRANE SYSTEMS

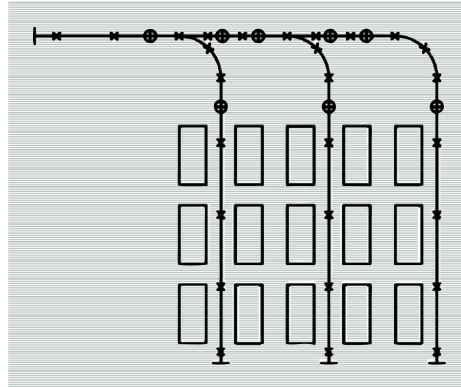
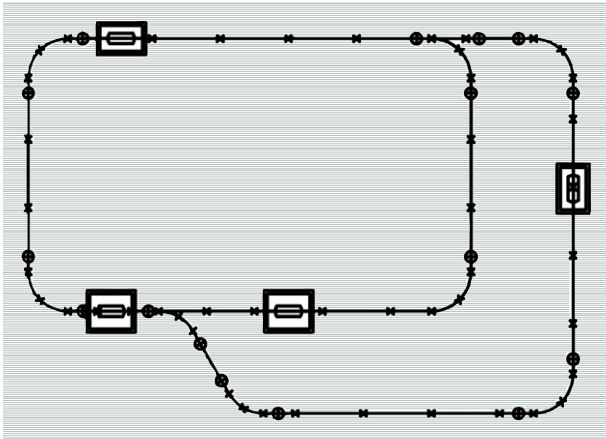
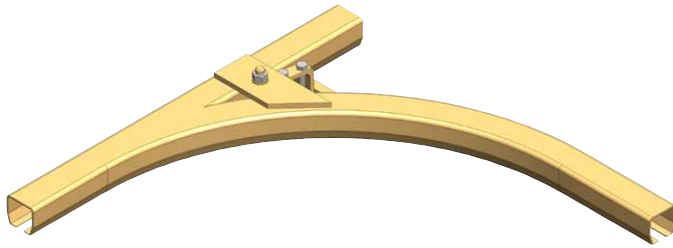
Manipulator

Frequently our light cranes are used as a platform where different type of manipulators are suspended. Our engineering department is capable of providing bespoke solutions to our customers needs.

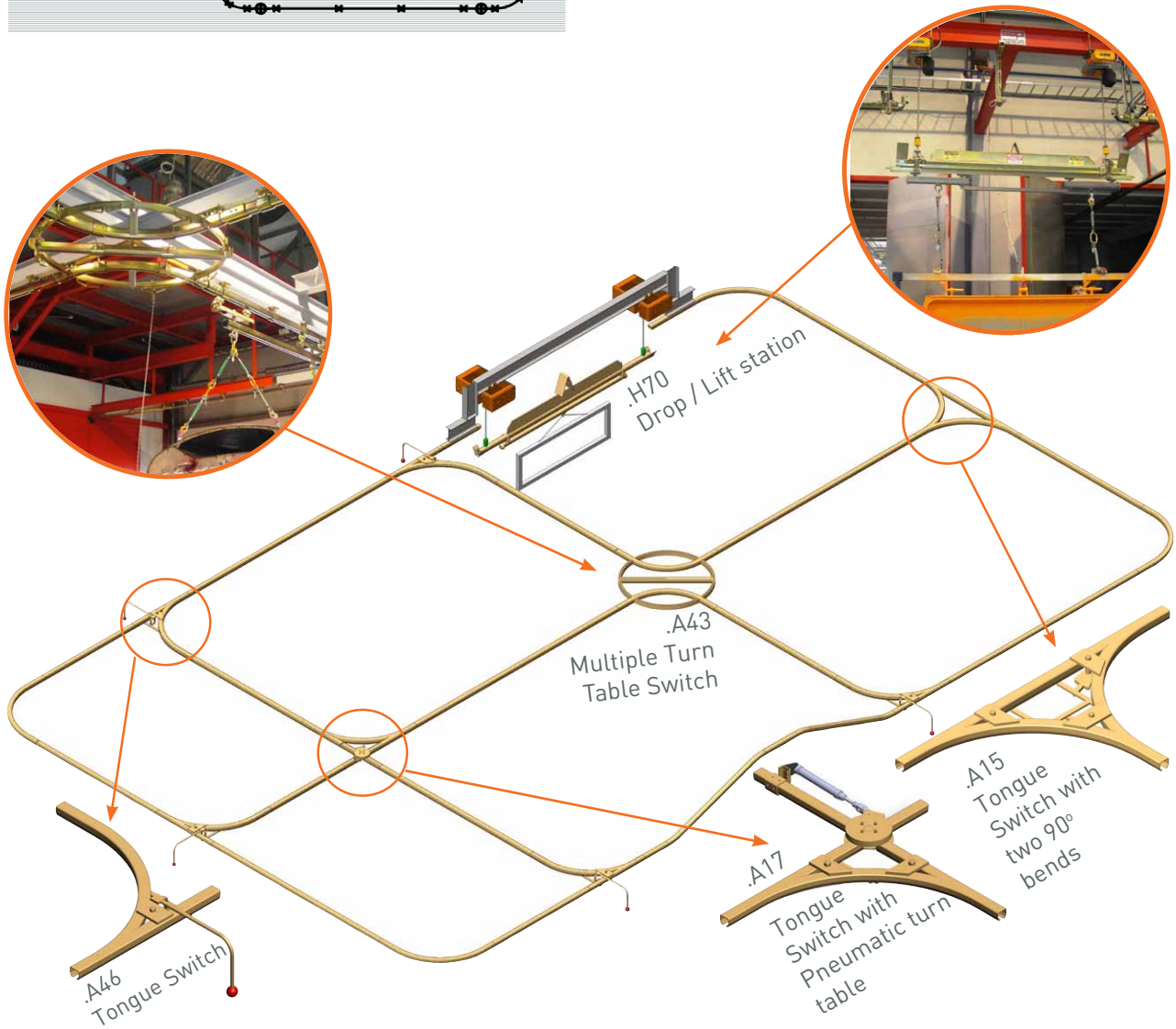


Conveyors Systems

NIKO conveyor systems can be used in a variety of applications utilizing more than 2.000 components like switches and turn tables. Please refer to our brochure C1 for more information.



LIGHT CRANE SYSTEMS

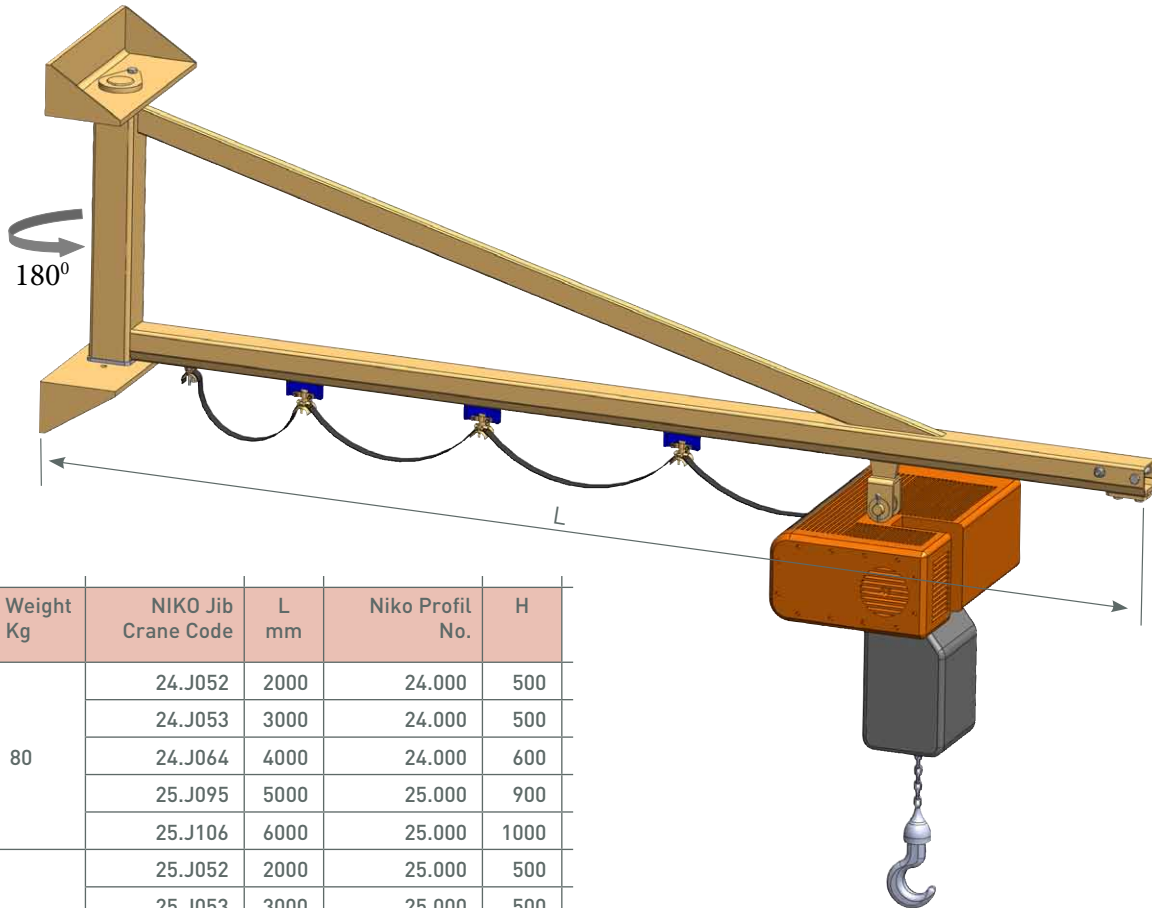


Light crane systems

Jib Cranes

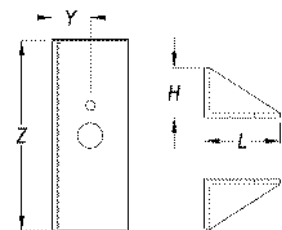
Utilizing our enclosed Profiles we produce high quality and low cost jib cranes suitable for wall or pillar mounting. Our standard range covers 180 degrees for capacities of up to 1.000 kg. Our jib crane sets come complete with a trolley for load suspension and the respective cable/hose trolleys.

The characteristics of our enclosed Profiles design offers ease of use and minimal pulling/pushing force in the operation of the jib cranes. This is critical into the ergonomic operation of the jib crane and the minimization of potential strain on the user.



| Weight Kg | NIKO Jib Crane Code | L mm | Niko Profil No. | H |
|-----------|---------------------|------|-----------------|------|
| 80 | 24.J052 | 2000 | 24.000 | 500 |
| | 24.J053 | 3000 | 24.000 | 500 |
| | 24.J064 | 4000 | 24.000 | 600 |
| | 25.J095 | 5000 | 25.000 | 900 |
| | 25.J106 | 6000 | 25.000 | 1000 |
| 125 | 25.J052 | 2000 | 25.000 | 500 |
| | 25.J053 | 3000 | 25.000 | 500 |
| | 25.J064 | 4000 | 25.000 | 600 |
| | 25.J095 | 5000 | 25.000 | 900 |
| | 25.J106 | 6000 | 25.000 | 1000 |
| 250 | 25.J052 | 2000 | 25.000 | 500 |
| | 25.J063 | 3000 | 25.000 | 600 |
| | 25.J084 | 4000 | 25.000 | 800 |
| | 26.J095 | 5000 | 26.000 | 900 |
| | 26.J106 | 6000 | 26.000 | 1000 |
| | 26.J082 | 2000 | 26.000 | 800 |
| 500 | 26.J083 | 3000 | 26.000 | 800 |
| | 26.J094 | 4000 | 26.000 | 900 |
| | 27.J105 | 5000 | 27.000 | 1000 |
| | 27.J116 | 6000 | 27.000 | 1100 |
| 1000 | 27.J092 | 2000 | 27.000 | 900 |
| | 27.J093 | 3000 | 27.000 | 900 |
| | 27.J104 | 4000 | 27.000 | 1000 |

| | |
|------------------------------|--------|
| NIKO Profile No. | 24.000 |
| Wall Mounting Bracket Kit No | 24.B90 |
| H (mm) | 100 |
| L (mm) | 150 |
| Y (mm) | 75 |
| Z (mm) | 380 |

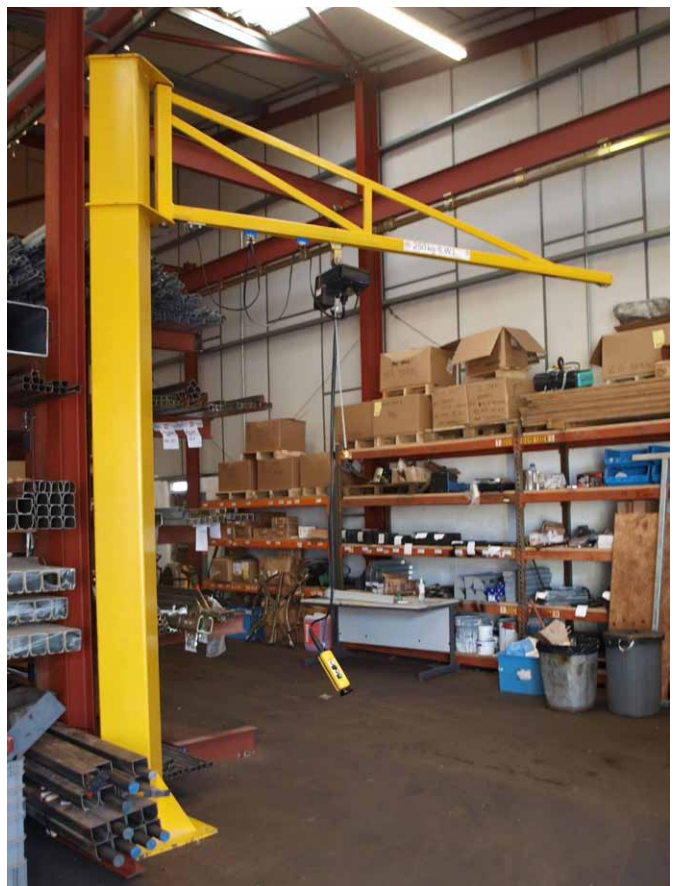


Application Photos



LIGHT CRANE SYSTEMS

Application Photos



LIGHT CRANE SYSTEMS

Application Photos



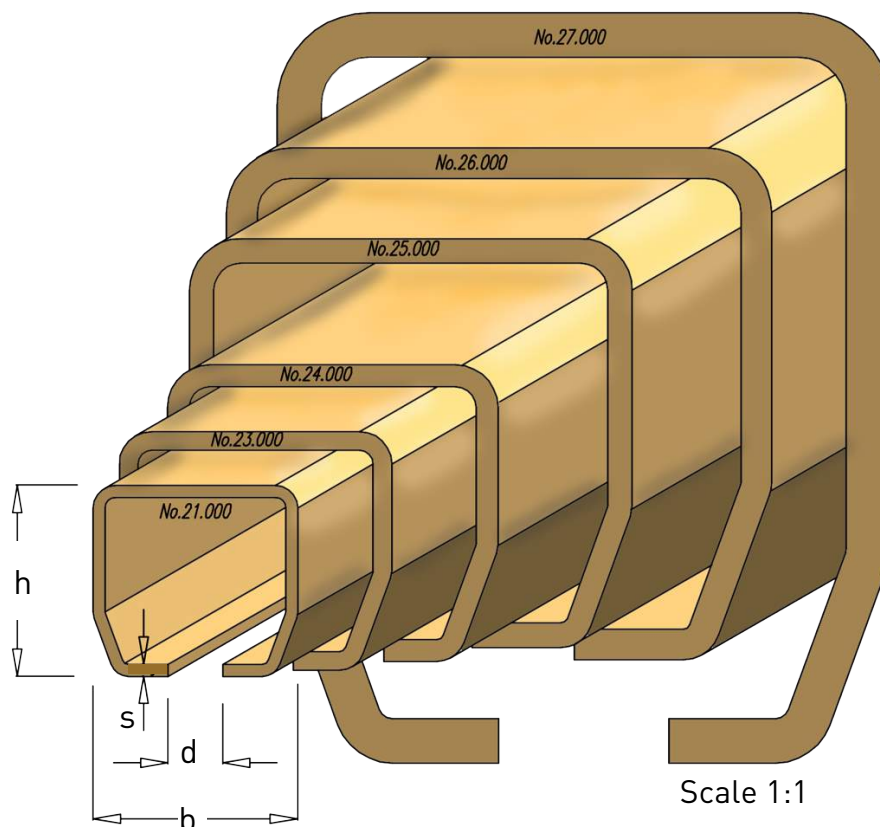
LIGHT CRANE SYSTEMS

Component Specifications

NIKO Track profiles

Our wide range of 5 Track profile sizes can accommodate loads up to 2.000 kg. The NIKO enclosed track tapered design allows correct alignment of the trolleys and reduces the possibility of dust build up. This ensures the smooth running of the trolleys and the long life of the crane. NIKO Light Cranes require to operate only 1-4% force of the weight lifted. For use in aggressive environments we can also offer Niko Cranes in stainless steel grade 304.

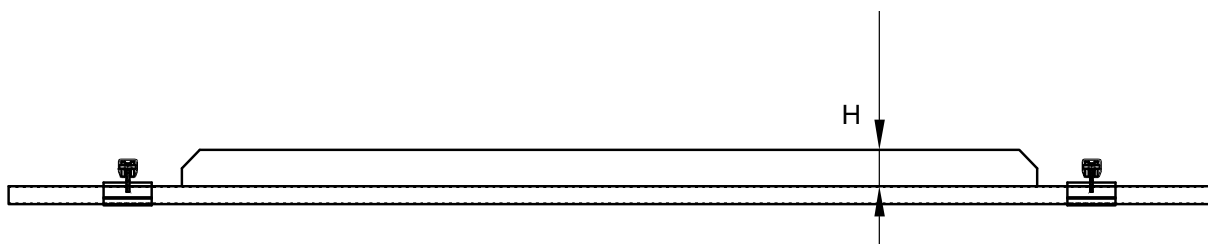
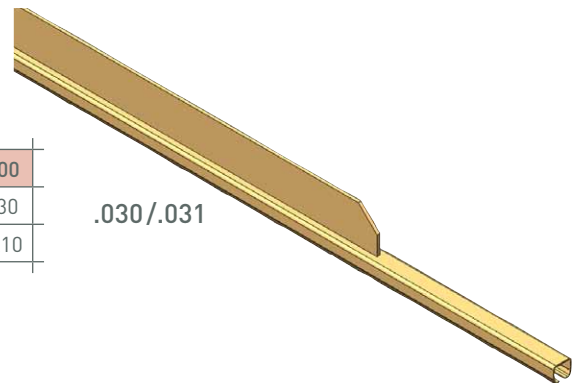
| NIKO Profil No. | Dimensions | | | |
|------------------------|------------|--------|--------|--------|
| | h (mm) | b (mm) | d (mm) | s (mm) |
| 23.000 | 35,00 | 40,00 | 11,00 | 2,75 |
| 23.050 stainless steel | 35,00 | 40,00 | 11,00 | 2,75 |
| 24.000 | 43,50 | 48,50 | 15,00 | 3,20 |
| 24.050 stainless steel | 43,50 | 48,50 | 15,00 | 3,20 |
| 25.000 | 60,00 | 65,00 | 18,00 | 3,60 |
| 25.050 stainless steel | 60,00 | 65,00 | 18,00 | 3,60 |
| 26.000 | 75,00 | 80,00 | 22,00 | 4,50 |
| 27.000 | 110,00 | 90,00 | 25,00 | 6,50 |



Reinforced Track with welded spine

In order to increase the bridge span and the supporting distances of the profiles we have developed 2 types of reinforced tracks. Reinforced track with welded spine is a cost effective solution for relatively short spans or supporting distances. The welded spine reinforcement is also recommended for low head room requirement due to the low height of the spine.

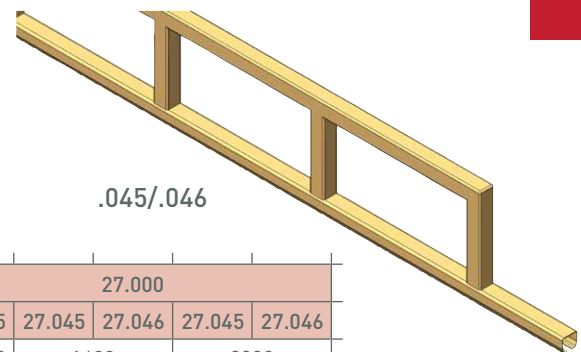
| NIKO Profile No. | 23.000 | 24.000 | | 25.000 | 26.000 | | 27.000 |
|------------------|--------|--------|--------|--------|--------|--------|--------|
| Reinforce Track | 23.030 | 24.030 | 24.031 | 25.030 | 26.030 | 26.031 | 27.030 |
| HxS | 80x8 | 100x8 | 120x8 | 120x10 | 150x10 | 180x10 | 180x10 |



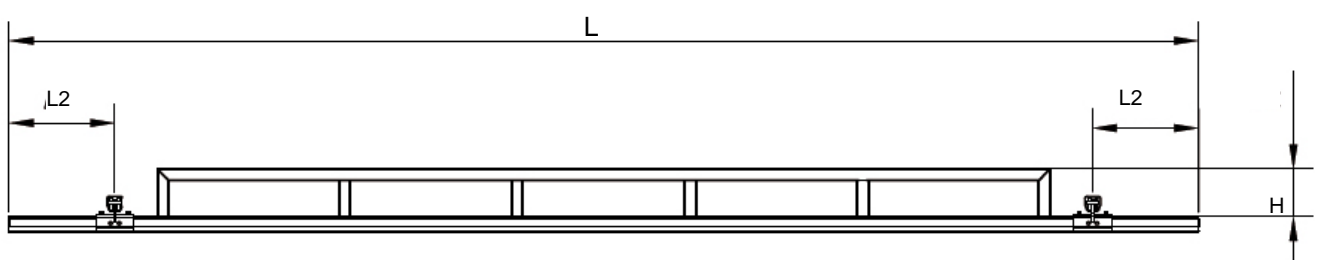
LIGHT CRANE SYSTEMS

Reinforced Track with welded square profiles (Trussed type)

Trussed type reinforcement are necessary for long spans and fewer supporting points.



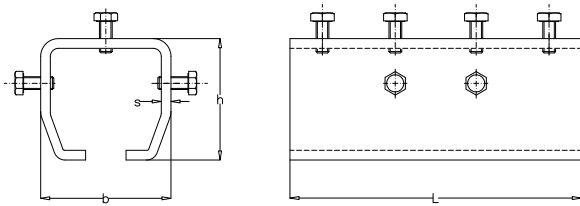
| NIKO Profile No. | 24.000 | 25.000 | | 26.000 | | | 27.000 | | | | |
|------------------|--------|--------|--------|--------|--------|--------|--------|--------|--------|--------|--------|
| Reinforce Track | 24.045 | 25.045 | 25.046 | 26.045 | 26.045 | 26.046 | 27.045 | 27.045 | 27.046 | 27.045 | 27.046 |
| P max (Kg) | 125 | 250 | | 500 | 750 | | 1000 | 1600 | | 2000 | |
| L max (mm) | 9 | 9 | 10 | 10 | 8 | 10 | 10 | 8,50 | 10 | 7 | 9 |
| H (mm) | 280 | 320 | 350 | 380 | 380 | 420 | 460 | 460 | 520 | 460 | 520 |
| L2 max (mm) | 450 | 500 | 500 | 550 | 550 | 550,00 | 600 | 600 | 600 | 600 | 600 |



Splice Joint

.B49

The track sections are joined using the track joint by tightening the top screws first then aligning the profiles by means of the side screws.

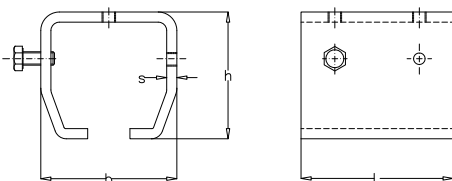


| NIKO Profile No. | 23.000 | 24.000 | 25.000 | 26.000 | 27.000 |
|------------------|--------|--------|--------|--------|--------|
| Splice joint No. | 23.B49 | 24.B49 | 25.B49 | 26.B49 | 27.B49 |
| L (mm) | 120 | 150 | 180 | 200 | 250 |
| h (mm) | 45 | 54 | 75 | 93 | 134 |
| b (mm) | 49 | 60 | 80 | 100 | 118 |
| s (mm) | 4 | 4,5 | 6 | 8 | 10 |

Support Bracket

.B00/.B50

This bracket can be used and adapted for specific applications where standard supports are unsuitable.

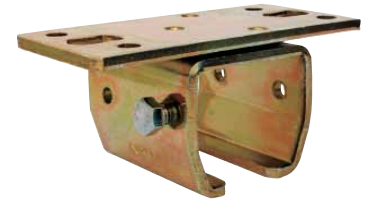


| NIKO Profile No. | 23.000 | 24.000 | 25.000 | 26.000 | 27.000 |
|---------------------------------|--------|--------|--------|--------|--------|
| Support bracket No. Zinc plated | 23.B00 | 24.B00 | 25.B00 | 26.B00 | 27.B00 |
| Support bracket No. Black | 23.B50 | 24.B50 | 25.B50 | 26.B50 | 27.B50 |
| L (mm) | 55 | 68 | 90 | 110 | 120 |
| b (mm) | 49 | 60 | 80 | 100 | 114 |
| h (mm) | 45 | 54 | 75 | 93 | 134 |
| s (mm) | 4 | 4,5 | 6 | 8 | 10 |

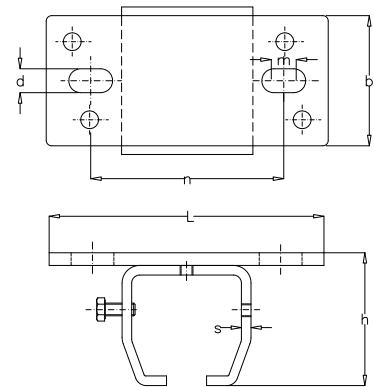
Ceiling Support Bracket

.B02

This bracket is designed for bolting direct to overhead steelwork or ceiling.



| NIKO Profile No. | 23.000 | 24.000 | 25.000 | 26.000 | 27.000 |
|---------------------|--------|--------|--------|--------|--------|
| Support bracket No. | 23.B02 | 24.B02 | 25.B02 | 26.B02 | 27.B02 |
| L (mm) | 115 | 130 | 170 | 210 | 260 |
| h (mm) | 51 | 60 | 83 | 107 | 150 |
| b (mm) | 55 | 68 | 90 | 110 | 120 |
| d (mm) | 11 | 13 | 17 | 22 | 22 |
| n (mm) | 80 | 94 | 124 | 148 | 178,5 |
| s (mm) | 4 | 4,5 | 6 | 8 | 10 |
| m (mm) | 8 | 8 | 10 | 12 | 23,5 |



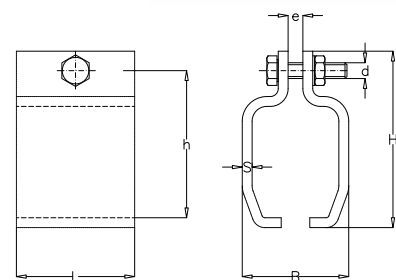
Split Support Bracket

.B03

This bracket is generally used for variable height configurations.



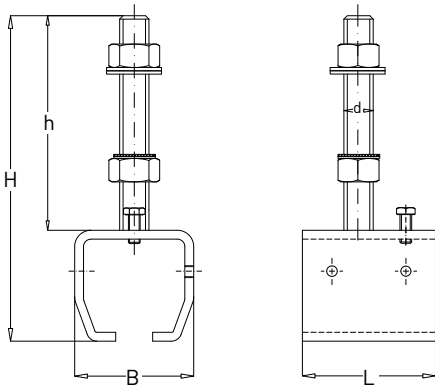
| NIKO Profile No. | 21.000 | 23.000 | 24.000 | 25.000 | 26.000 | 27.000 |
|---------------------|--------|--------|--------|--------|--------|--------|
| Support bracket No. | 21.B03 | 23.B03 | 24.B03 | 25.B03 | 26.B03 | 27.B03 |
| B (mm) | 36 | 48 | 56,5 | 77 | 96 | 110 |
| H (mm) | 64,5 | 80 | 88 | 132 | 150 | 180 |
| L (mm) | 40 | 50 | 50 | 90 | 110 | 120 |
| h (mm) | 49 | 59 | 70 | 94 | 111 | 148 |
| s (mm) | 3 | 4 | 4 | 6 | 8 | 10 |
| e (mm) | 6 | 8 | 8 | 10 | 10 | 15 |
| d (mm) | M10 | M12 | M12 | M16 | M16 | M16 |



Adjustable Bracket

.B04

It allows us to adjust the height of the rails and to correct any misalignments.



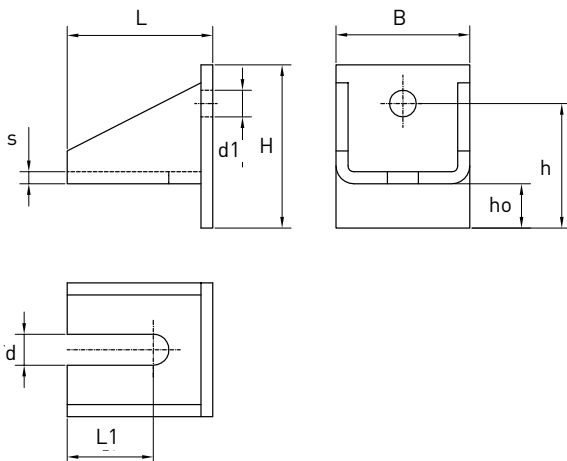
| NIKO Profile No. | 23.000 | 24.000 | 25.000 | 26.000 | 27.000 |
|------------------|--------|--------|--------|--------|--------|
| Bracket No. | 23.B04 | 24.B04 | 25.B04 | 26.B04 | 27.B04 |
| H (mm) | 123 | 145 | 198 | 292 | 353 |
| h (mm) | 45 | 54 | 75 | 97 | 134 |
| L (mm) | 55 | 68 | 90 | 110 | 120 |
| B (mm) | 49 | 60 | 80 | 100 | 114 |
| d (mm) | M12 | M16 | M20 | M24 | M30 |

LIGHT CRANE SYSTEMS

Adjustable Wall Bracket

.B05

It is used in combination with the .B04 adjustable bracket and it usually mounted on the wall.

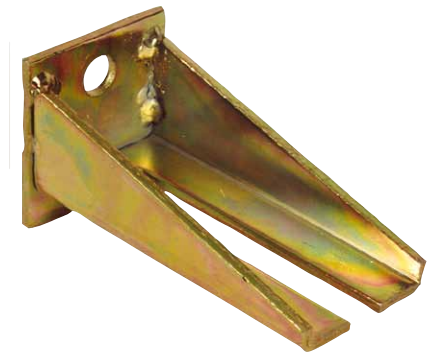


| NIKO Profile No. | 21.000 | 24.000 | 26.000 |
|-----------------------------|--------|--------|--------|
| Adjustable wall bracket No. | 21.B05 | 24.B05 | 26.B05 |
| B (mm) | 50 | 75 | 90 |
| H (mm) | 40 | 80 | 110 |
| h (mm) | 25 | 61 | 85 |
| ho (mm) | - | 22 | 31 |
| L (mm) | 49 | 60 | 98 |
| L1 (mm) | 31 | 31 | 60 |
| s (mm) | 5 | 5 | 8 |
| d (mm) | 11 | 17 | 21 |
| d1 (mm) | Φ18 | Φ18 | Φ18 |

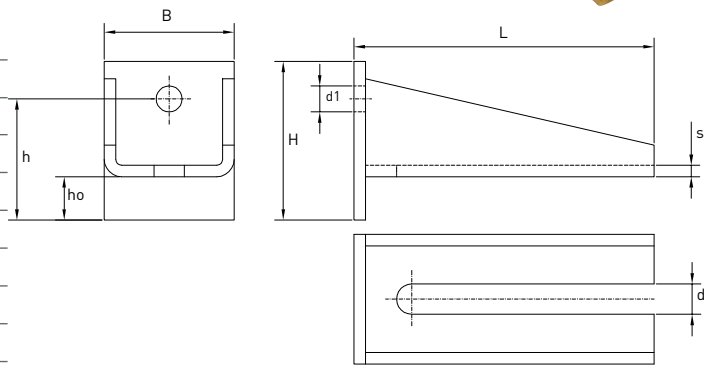
Double Adjustable Wall Bracket

.B06

It can accommodate 2 .B04 adjustable brackets.



| NIKO Profile No. | 21.000 | 24.000 | 26.000 | 27.000 |
|------------------|--------|--------|--------|--------|
| Bracket No. | 21.B06 | 24.B06 | 26.B06 | 27.B06 |
| B (mm) | 60 | 75 | 90 | 90 |
| H (mm) | 49 | 80 | 110 | 110 |
| h (mm) | 35 | 61 | 85 | 85 |
| ho (mm) | - | 16 | 31 | 31 |
| L (mm) | 100 | 155 | 208 | 208 |
| L1 (mm) | 82 | 120 | 168 | 168 |
| s (mm) | 6 | 5 | 8 | 8 |
| d (mm) | 11 | 17 | 21 | 31 |
| d1 (mm) | 13 | 17 | 18 | 22 |



Split Suspension Bracket

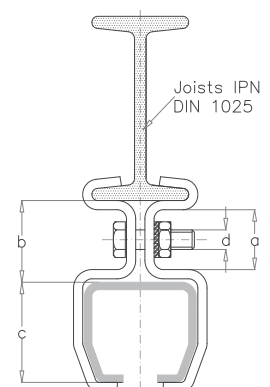
.B08/.B26

This bracket is used for mounting directly to the underside flange of a parallel I beam.



| NIKO Profile No. | 23.000 | 24.000 | 25.000 | 26.000 | 27.000 |
|--------------------|--------|--------|--------|--------|--------|
| Dimension a in mm. | 25 | 25 | 42 | 44 | 66 |
| Dimension b in mm. | 34 | 34 | 56 | 63 | 90 |
| Dimension c in mm. | 35 | 44 | 60 | 75 | 110 |
| Dimension d in mm. | 9 Φ | 9 Φ | 17 Φ | 17 Φ | 17 Φ |
| Screw type | M8x30 | M8x30 | M16x50 | M16x50 | M16x50 |
| Material | 50x4 | 50x4 | 90x6 | 110x8 | 120x10 |

| Split Suspension Bracket Joist IPN DIN 1025 | | | | | |
|---|--------|--------|--------|--------|--------|
| For IPN 80x42 | 23.B08 | 24.B08 | | | |
| For IPN 100x50 | 23.B10 | 24.B10 | 25.B10 | | |
| For IPN 120x58 | 23.B12 | 24.B12 | 25.B12 | | |
| For IPN 140x66 | 23.B14 | 24.B14 | 24.B14 | | |
| For IPN 160x74 | | 24.B16 | 25.B16 | 26.B16 | |
| For IPN 180x82 | | 24.B18 | 25.B18 | 26.B18 | |
| For IPN 200x90 | | 24.B20 | 25.B20 | 26.B20 | 27.B20 |
| For IPN 220x98 | | | 25.B22 | 26.B22 | 27.B22 |
| For IPN 240x106 | | | 25.B24 | 26.B24 | 27.B24 |
| For IPN 260x113 | | | 25.B26 | 26.B26 | 27.B26 |

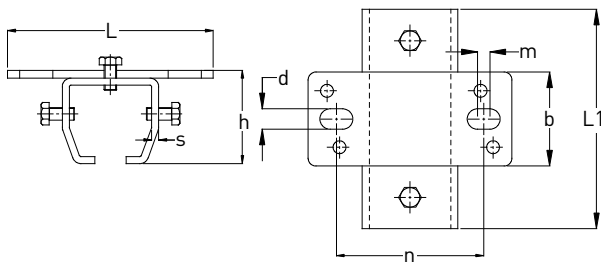


LIGHT CRANE SYSTEMS

Ceiling Support Joint

.B30

This is a combination of a ceiling support and a splice joint.



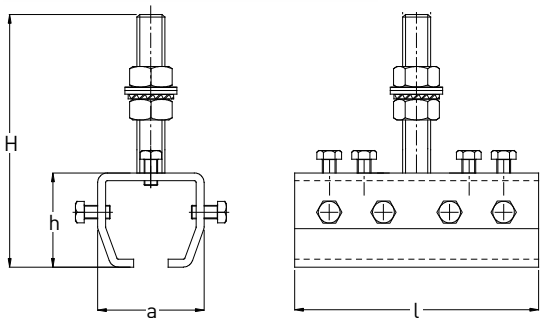
| NIKO Profile No. | 23.000 | 24.000 | 25.000 | 26.000 | 27.000 |
|-------------------|--------|--------|--------|--------|--------|
| Support Joint No. | 23.B30 | 24.B30 | 25.B30 | 26.B30 | 27.B30 |
| L (mm) | 115 | 130 | 170 | 210 | 260 |
| h (mm) | 51 | 60 | 83 | 107 | 150 |
| s (mm) | 4 | 4,5 | 6 | 8 | 10 |
| b (mm) | 55 | 68 | 90 | 110 | 120 |
| m (mm) | 8 | 8 | 10 | 12 | 23,5 |
| n (mm) | 80 | 94 | 124 | 148 | 178,5 |
| d (mm) | 11 | 13 | 17 | 22 | 22 |
| L1 (mm) | 120 | 150 | 180 | 200 | 250 |

LIGHT CRANE SYSTEMS

Height Adjustable Support Joint

.B11

This is a combination of a height adjustable bracket and a splice joint.

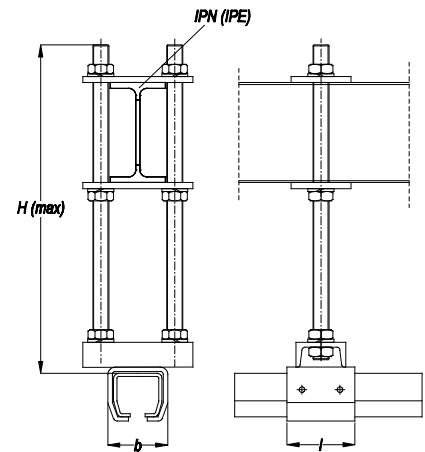


| NIKO Profile No. | 23.000 | 24.000 | 25.000 | 26.000 | 27.000 |
|-------------------|--------|--------|--------|--------|--------|
| Support Joint No. | 23.B11 | 24.B11 | 25.B11 | 26.B11 | 27.B11 |
| H (mm) | 135 | 145 | 215 | 292 | 353 |
| h (mm) | 45 | 54 | 75 | 93 | 134 |
| a (mm) | 49 | 60 | 82 | 100 | 118 |
| l (mm) | 120 | 150 | 180 | 200 | 250 |

Height Adjustable support assembly (Parallel to the I-beam)

.B55

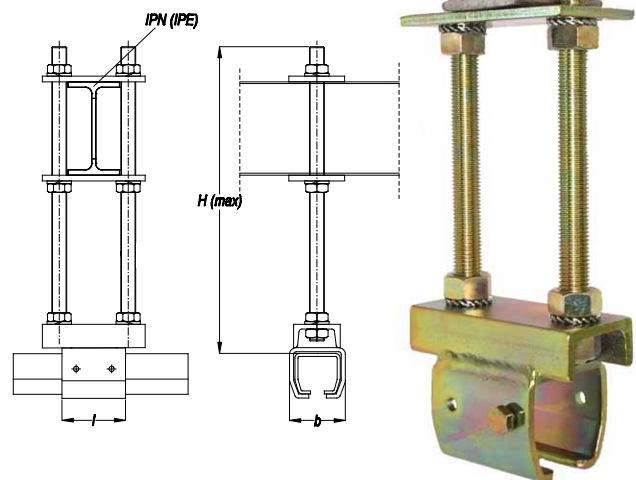
| NIKO Profile No. | 23.000 | 24.000 | 25.000 | 26.000 | 27.000 |
|------------------|--------|--------|--------|--------|--------|
| Bracket No. | 23.B55 | 24.B55 | 25.B55 | 26.B55 | 27.B55 |
| b (mm) | 49 | 60 | 80 | 100 | 114 |
| l (mm) | 55 | 68 | 90 | 110 | 120 |
| H max (mm) | 500 | 500 | 500 | 500 | 500 |



Height Adjustable Bracket (Vertical to the I-beam)

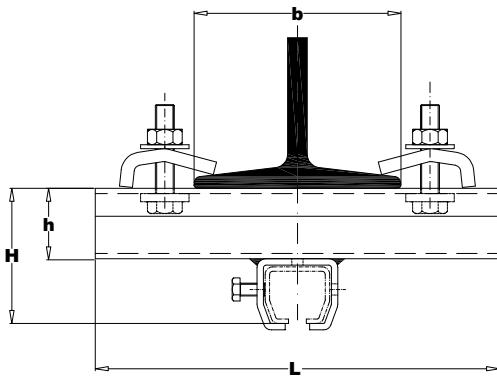
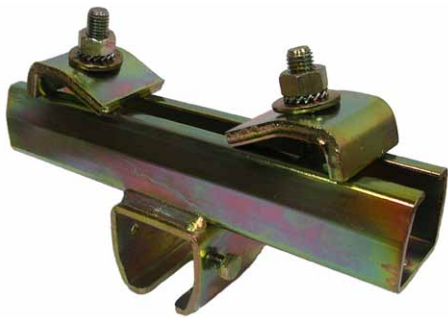
.B56

| NIKO Profile No. | 23.000 | 24.000 | 25.000 | 26.000 | 27.000 |
|------------------|--------|--------|--------|--------|--------|
| Bracket No. | 23.B55 | 24.B55 | 25.B55 | 26.B55 | 27.B55 |
| b (mm) | 49 | 60 | 80 | 100 | 114 |
| l (mm) | 55 | 68 | 90 | 110 | 120 |
| H max (mm) | 500 | 500 | 500 | 500 | 500 |



Adjustable Joist Clamp (Parallel to the I-beam)

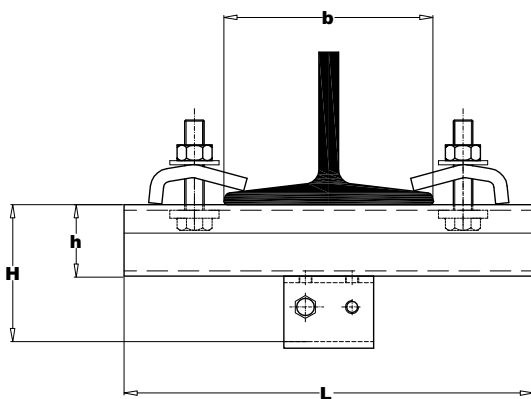
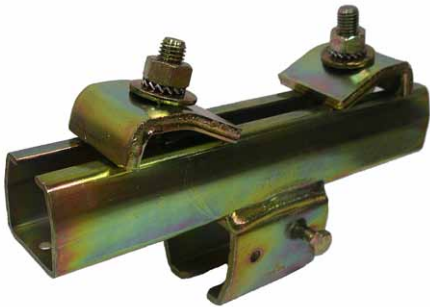
.B35



| NIKO Profile No. | 23.000 | 24.000 | 25.000 | 26.000 | 27.000 |
|------------------|--------|--------|--------|--------|--------|
| Bracket No. | 23.B35 | 24.B35 | 25.B35 | 26.B35 | 27.B35 |
| H (mm) | 85 | 94 | 129 | 146 | 199 |
| L (mm) | 250 | | 300 | | 330 |
| b (mm) | 150 | | 175 | | 205 |
| h (mm) | 44 | | 60 | | 75 |

Adjustable Joist Clamp (Vertical to the I-beam)

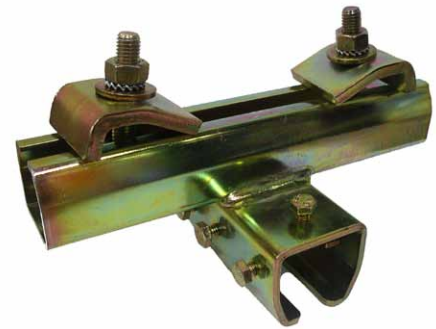
.B36



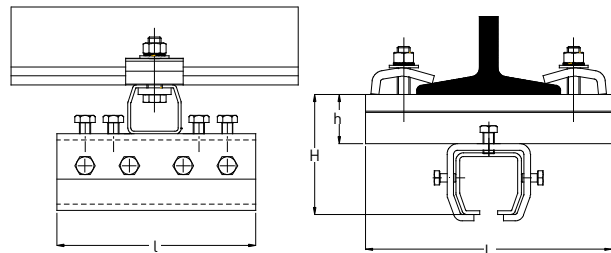
| NIKO Profile No. | 23.000 | 24.000 | 25.000 | 26.000 | 27.000 |
|------------------|--------|--------|--------|--------|--------|
| Bracket No. | 23.B36 | 24.B36 | 25.B36 | 26.B36 | 27.B36 |
| H (mm) | 85 | 94 | 129 | 146 | 199 |
| L (mm) | 250 | | 300 | | 330 |
| b (mm) | 150 | | 175 | | 205 |
| h (mm) | 44 | | 60 | | 75 |

Adjustable Joist Clamp Joint (Parallel to the I-beam)

.B71



| NIKO Profile No. | 23.000 | 24.000 | 25.000 | 26.000 | 27.000 |
|----------------------|--------|--------|--------|--------|--------|
| Adjustable joist No. | 23.B71 | 24.B71 | 25.B71 | 26.B71 | 27.B71 |
| H (mm) | 85 | 94 | 129 | 146 | 199 |
| L (mm) | 250 | 250 | 300 | 300 | 330 |
| h (mm) | 44 | 44 | 60 | 60 | 75 |
| l (mm) | 120 | 150 | 180 | 200 | 250 |

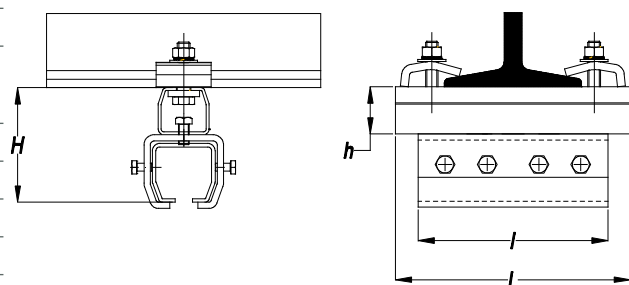


Adjustable Joist Clamp Joint (Vertical to the I-beam)

.B72



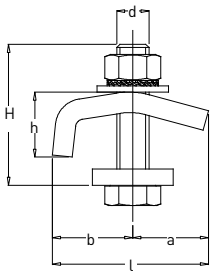
| NIKO Profile No. | 23.000 | 24.000 | 25.000 | 26.000 | 27.000 |
|----------------------|--------|--------|--------|--------|--------|
| Adjustable joist No. | 23.B72 | 24.B72 | 25.B72 | 26.B72 | 27.B72 |
| H (mm) | 41 | 50 | 69 | 86 | 124 |
| h (mm) | 44 | 44 | 60 | 60 | 75 |
| l (mm) | 120 | 150 | 180 | 200 | 270 |
| L (mm) | 250 | 250 | 300 | 300 | 330 |



Adjustable Suspension Bracket

.B37

This item is used for clamping the adjustable suspension bracket to the support steelwork and is supplied with bolt and square nut.



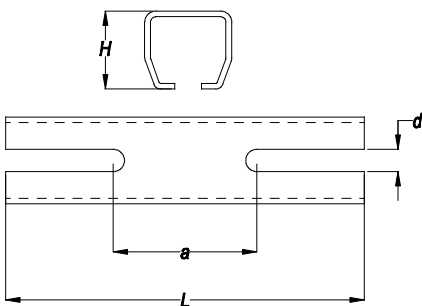
| NIKO Profile No. | 23.000 | 24.000 | 25.000 | 26.000 |
|------------------|--------|--------|--------|--------|
| Bracket No. | 23.B37 | 24.B37 | 25.B37 | 26.B37 |
| l (mm) | 62 | 62 | 80 | 80 |
| a (mm) | 30 | 30 | 40 | 40 |
| b (mm) | 32 | 32 | 40 | 40 |
| h (mm) | 24 | 24 | 30 | 30 |
| d (mm) | M12 | M12 | M16 | M16 |
| H (mm) | 60 | 60 | 70 | 70 |

LIGHT CRANE SYSTEMS

Adjustable Suspension Bracket

.B38

These brackets are designed to accommodate variations in support steelwork distances relative to the track level. They are normally used in conjunction with the split support brackets.



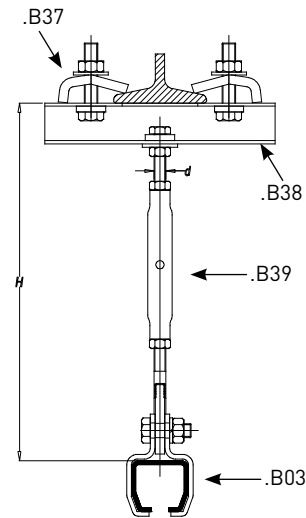
| NIKO Profile No. | 23.000 | 24.000 | 25.000 | 26.000 |
|------------------|--------|--------|--------|--------|
| Bracket No. | 23.B38 | | 25.B38 | |
| L (mm) | 198 | | 260 | |
| a (mm) | 76 | | 90 | |
| d (mm) | 12,5 | | 18 | |
| H (mm) | 35 | | 60 | |

Adjustable Suspension Bracket

.B39

This item is used for clamping the adjustable suspension bracket to the support steelwork and is supplied with bolt and square nut.

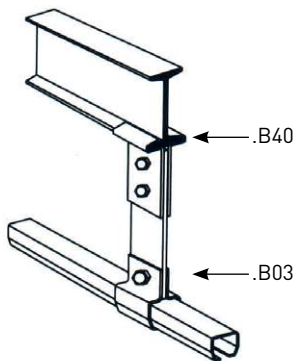
| NIKO Profile No. | 23.000 | 24.000 | 25.000 | 26.000 |
|------------------|--------|--------|--------|--------|
| Turnbuckle No. | 23.B39 | | 25.B39 | |
| H max (mm) | 375 | | 530 | |
| H min (mm) | 265 | | 380 | |
| d (mm) | M10 | | M16 | |



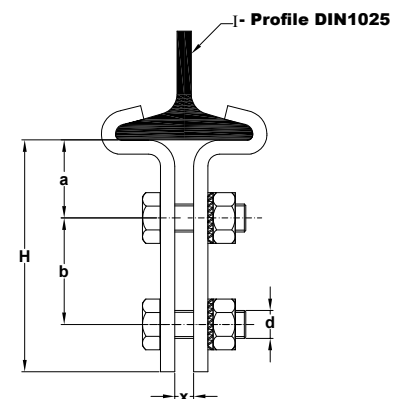
Split suspension Bracket

.B40

This is normally connected with a steel plate to the bracket B03.



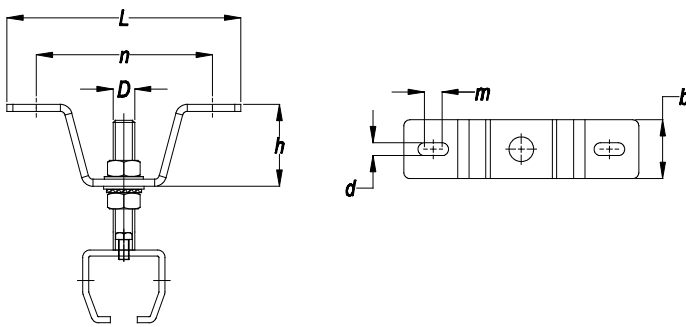
| NIKO Profile No. | 24.000 & 25.000 | | | 26.000 & 27.000 | |
|----------------------|-----------------|-----|-----|-----------------|-----|
| Bracket No. | 24.B40 | | | 26.B40 | |
| Profile DIN 1025 IPN | 100 | 120 | 140 | 160 | 180 |
| X (mm) | 8 | 16 | 24 | 16 | 24 |
| a (mm) | 33 | | | 40 | |
| b (mm) | 45 | | | 45 | |
| d (mm) | M12 | | | M16 | |
| H (mm) | 98 | | | 110 | |



LIGHT CRANE SYSTEMS

Adjustable bracket with ceiling support

.B44

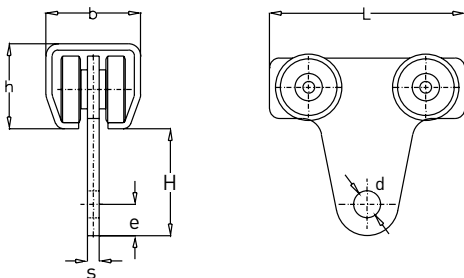


| NIKO Profile No. | 23.000 | 24.000 | 25.000 |
|------------------|--------|--------|--------|
| Bracket No. | 23.B44 | 24.B44 | 25.B44 |
| L (mm) | 200 | 200 | |
| n (mm) | 150 | 150 | |
| h (mm) | 70 | 70 | |
| m (mm) | 15 | 15 | |
| d (mm) | 11 | 11 | |
| b (mm) | 50 | 50 | |
| D (mm) | M16 | M20 | |

LIGHT CRANE SYSTEMS

4-Wheel trolley with hole

.T10



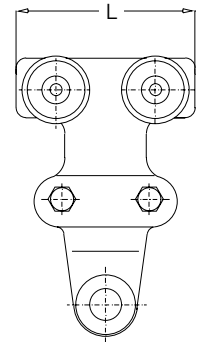
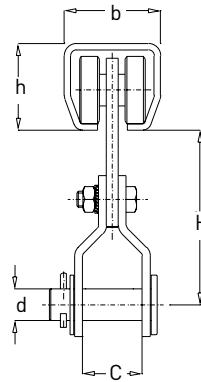
| NIKO Profile No. | 23.000 | 24.000 | 25.000 | 26.000 | 27.000 |
|------------------|--------|--------|--------|--------|--------|
| Item Ref | 21.T10 | 24.T10 | 25.T10 | 26.T10 | 27.T10 |
| SWL Kg | 40 | 80 | 200 | 400 | 800 |
| H (mm) | 44 | 54 | 62 | 70 | 180 |
| L (mm) | 80 | 100 | 120 | 145 | 210 |
| h (mm) | 35 | 43,5 | 60 | 75 | 110 |
| b (mm) | 40 | 48,5 | 65 | 80 | 90 |
| d (mm) | 10 | 14 | 18 | 22 | 26 |
| e (mm) | 12 | 15 | 20 | 24 | 35 |
| s (mm) | 6 | 8 | 10 | 12 | 15 |

4-Wheel trolley with pin (bolted)

.T44



| NIKO Profile No. | 24.000 | 25.000 | 26.000 |
|------------------|--------|--------|--------|
| Item Ref | 24.T44 | 25.T44 | 26.T44 |
| SWL Kg | 80 | 200 | 400 |
| H (mm) | 89 | 124 | 140 |
| h (mm) | 43,5 | 60 | 75 |
| b (mm) | 48,5 | 65 | 80 |
| L (mm) | 90 | 110 | 140 |
| C (mm) | 30 | 38 | 40 |
| d (mm) | 16 | 20 | 22 |

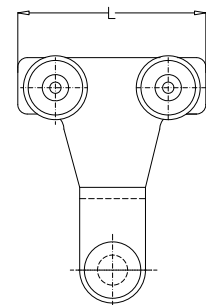
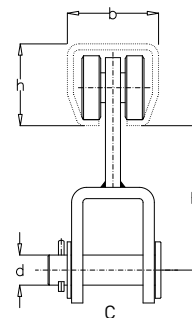


4-Wheel trolley with pin (welded)

.T46

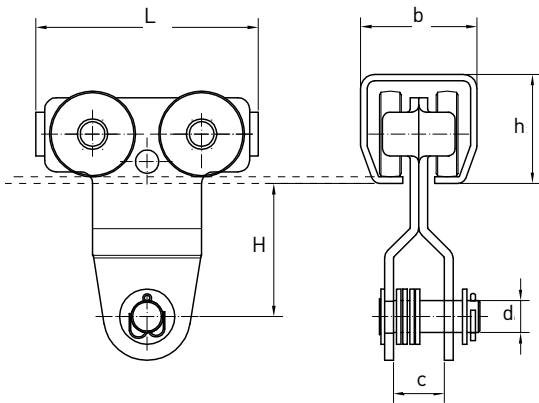


| NIKO Profile No. | 24.000 | 25.000 | 26.000 | 27.000 |
|------------------|--------|--------|--------|--------|
| Item Ref | 24.T46 | 25.T46 | 26.T46 | 27.T46 |
| SWL Kg | 80 | 200 | 400 | 1000 |
| H (mm) | 78 | 90 | 112 | 117 |
| h (mm) | 43,5 | 60 | 75 | 110 |
| b (mm) | 48,5 | 65 | 80 | 90 |
| L (mm) | 100 | 120 | 145 | |
| C (mm) | 32 | 32 | 40 | 40 |
| d (mm) | 16 | 20 | 20 | 20 |



4-Wheel trolley with pin and buffer (plate)

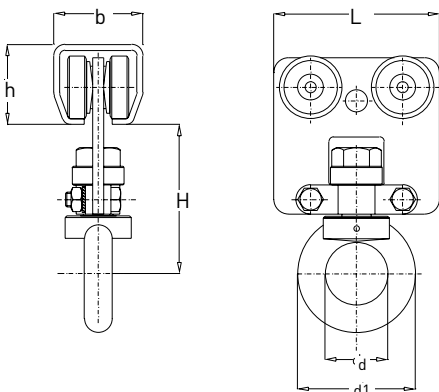
.T48



| NIKO Profile No. | 24.000 | 25.000 | 26.000 | 27.000 |
|------------------|--------|--------|--------|--------|
| Item Ref | 24.T48 | 25.T48 | 26.T48 | 27.T48 |
| SWL Kg | 125 | 250 | 500 | 1000 |
| L (mm) | 100 | 130 | 152 | 215 |
| H (mm) | 65 | 77 | 92 | 117 |
| b (mm) | 48,5 | 65 | 80 | 90 |
| h (mm) | 43,5 | 60 | 75 | 110 |
| d (mm) | 16 | 20 | 22 | 26 |
| c (mm) | 30 | 37 | 37 | 45 |

4-Wheel trolley with a rotating eye nut DIN 582 .T40

This trolleys is suitable for hoists with hook suspension.



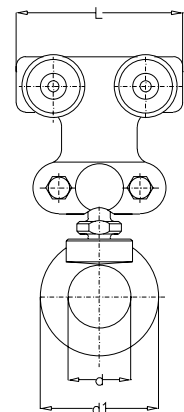
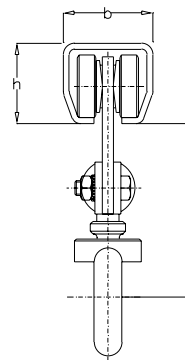
| NIKO Profile No. | 23.000 | 24.000 | 25.000 | 26.000 | 27.000 |
|------------------|--------|--------|--------|--------|--------|
| Item Ref | 23.T40 | 24.T40 | 25.T40 | 26.T40 | 27.T40 |
| SWL Kg | 40 | 80 | 200 | 400 | 800 |
| H (mm) | 85 | 96,5 | 122 | 145 | 182 |
| h (mm) | 35 | 43,5 | 60 | 75 | 110 |
| b (mm) | 40 | 48,5 | 65 | 80 | 90 |
| L (mm) | 70 | 90 | 110 | 140 | 200 |
| d (mm) | 30 | 35 | 40 | 50 | 60 |
| d1 (mm) | 54 | 63 | 72 | 90 | 108 |

4-Wheel trolley with a rotating eye nut DIN 582 .T20

With a ball joint in order for the ring to rotate and oscillate.



| NIKO Profile No. | 23.000 | 24.000 | 25.000 | 26.000 | 27.000 |
|------------------|--------|--------|--------|--------|--------|
| Item Ref | 23.T20 | 24.T20 | 25.T20 | 26.T20 | 27.T20 |
| SWL Kg | 40 | 80 | 200 | 400 | 800 |
| H (mm) | 85 | 96,5 | 122 | 145 | 182 |
| h(mm) | 35 | 43,5 | 60 | 75 | 110 |
| b (mm) | 40 | 48,5 | 65 | 80 | 90 |
| L (mm) | 70 | 90 | 110 | 140 | 200 |
| d (mm) | 30 | 35 | 40 | 50 | 60 |
| d1 (mm) | 54 | 63 | 72 | 90 | 108 |

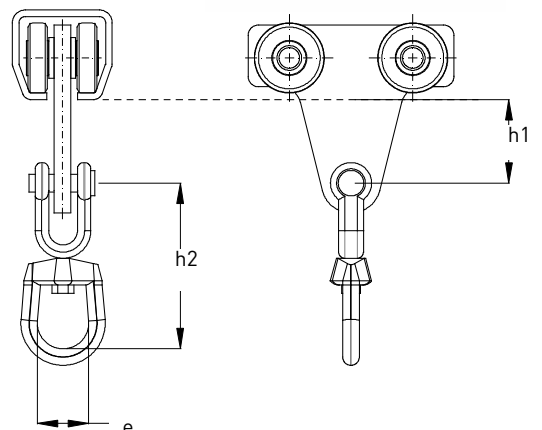


4-Wheel trolley with rotating ring

.T70



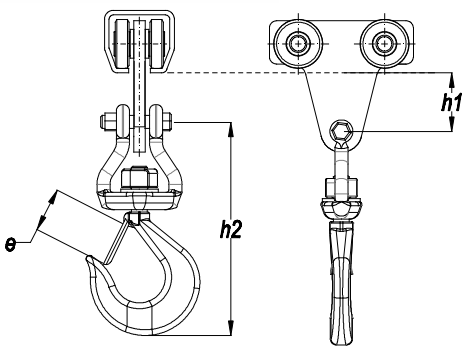
| NIKO Profile No. | 23.000 | 24.000 | 25.000 | 26.000 | 27.000 |
|------------------|--------|--------|--------|--------|--------|
| Item Ref | 23.T70 | 24.T70 | 25.T70 | 26.T70 | 27.T70 |
| SWL Kg | 40 | 80 | 200 | 400 | 1000 |
| h1 (mm) | 32 | 39 | 42 | 46 | 73 |
| h2 (mm) | 79 | 79 | 79 | 98 | 126 |
| e (mm) | 25 | 25 | 25 | 31 | 37 |



LIGHT CRANE SYSTEMS

4-Wheel trolley with rotating hook

.T71



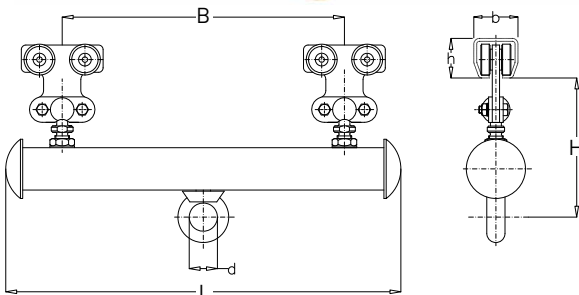
| NIKO Profile No. | 24.000 | 25.000 | 26.000 | 27.000 |
|------------------|--------|--------|--------|--------|
| Item Ref | 24.T71 | 25.T71 | 26.T71 | 27.T71 |
| SWL Kg | 80 | 200 | 400 | 1000 |
| h1 (mm) | 39 | 42 | 46 | 73 |
| h2 (mm) | 125 | 125 | 125 | 152 |
| e (mm) | 24 | 24 | 24 | 28 |

LIGHT CRANE SYSTEMS

Flight bar with fixed eye nut

.T24

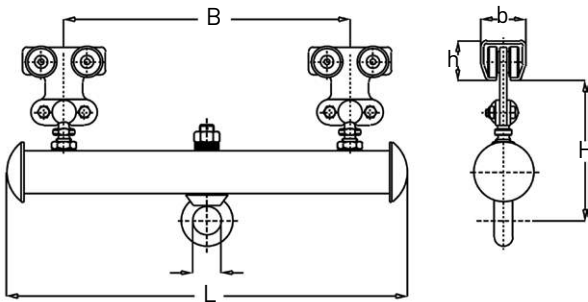
This trolley is suitable for increased load applications.



| NIKO Profile No. | 23.000 | 24.000 | 25.000 | 26.000 | 27.000 |
|------------------|--------|--------|--------|--------|--------|
| Item Ref | 23.T24 | 24.T24 | 25.T24 | 26.T24 | 27.T24 |
| SWL Kg | 80 | 160 | 400 | 800 | 1600 |
| H (mm) | 123 | 145 | 179 | 204 | 262 |
| h (mm) | 35 | 43,5 | 60 | 75 | 110 |
| b (mm) | 40 | 48,5 | 65 | 80 | 90 |
| B (mm) | 180 | 300 | 420 | 600 | 700 |
| L (mm) | 300 | 450 | 600 | 700 | 1000 |
| d (mm) | 30 | 35 | 40 | 50 | 60 |

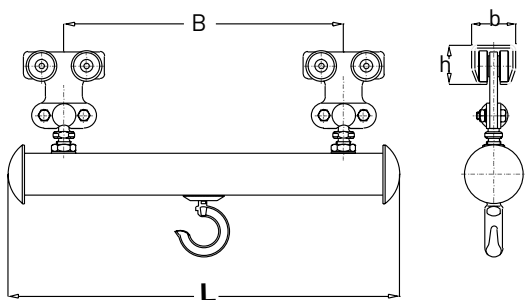
Flight bar with rotating eye nut

.T26



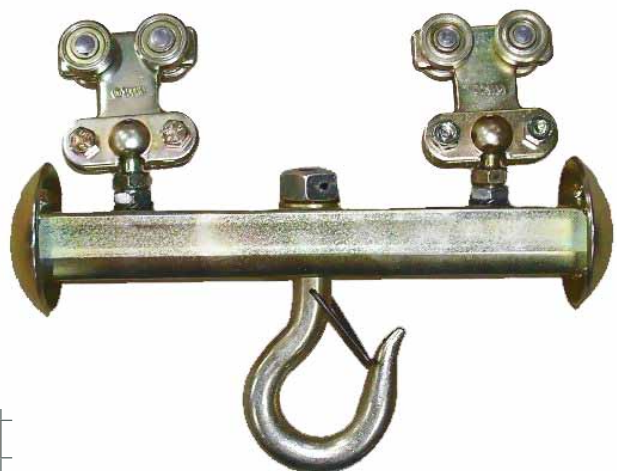
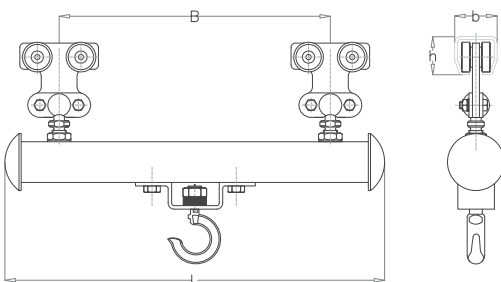
Flight bar with fixed hook

.T28



Flight bar with rotating hook

.T38

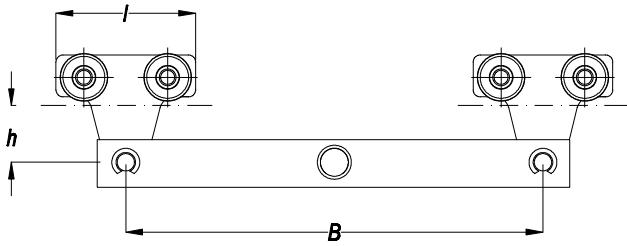


LIGHT CRANE SYSTEMS

| NIKO Profile No. | 23.000 | 24.000 | 25.000 | 26.000 | 27.000 |
|------------------|--------|--------|--------|--------|--------|
| Item Ref | 23.T26 | 24.T26 | 25.T26 | 26.T26 | 27.T26 |
| Item Ref | 23.T28 | 24.T28 | 25.T28 | 26.T28 | 27.T28 |
| Item Ref | 23.T38 | 24.T38 | 25.T38 | 26.T38 | 27.T38 |
| SWL Kg | 80 | 160 | 400 | 800 | 1600 |
| H (mm) | 123 | 145 | 179 | 204 | 262 |
| h (mm) | 35 | 43,5 | 60 | 75 | 110 |
| b (mm) | 40 | 48,5 | 65 | 80 | 90 |
| B (mm) | 180 | 300 | 420 | 500 | 700 |
| L (mm) | 300 | 450 | 600 | 700 | 1000 |

Flight bar with plates and pin

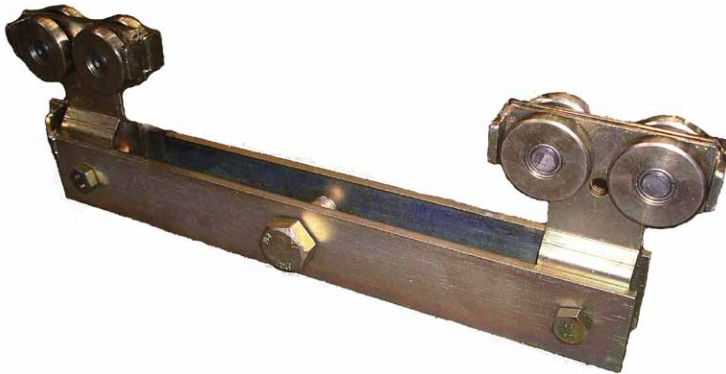
.T84



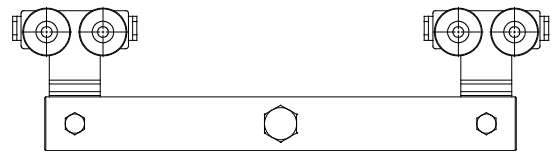
| NIKO Profile No. | 24.000 | 25.000 | 26.000 | 27.000 |
|------------------|--------|--------|--------|--------|
| Item Ref | 24.T38 | 25.T38 | 26.T38 | 27.T38 |
| SWL Kg | 160 | 400 | 800 | 1600 |
| l (mm) | 100 | 120 | 145 | 210 |
| h (mm) | 39 | 42 | 46 | 73 |
| B (mm) | 300 | 420 | 500 | 700 |

Heavy duty hoist trolley

.T49



| NIKO Profile No. | 24.000 | 25.000 | 26.000 | 27.000 |
|------------------|--------|--------|--------|--------|
| Item Ref | 24.T49 | 25.T49 | 26.T49 | 27.T49 |
| SWL Kg | 250 | 500 | 1000 | 2000 |

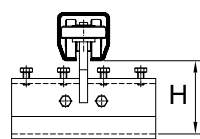
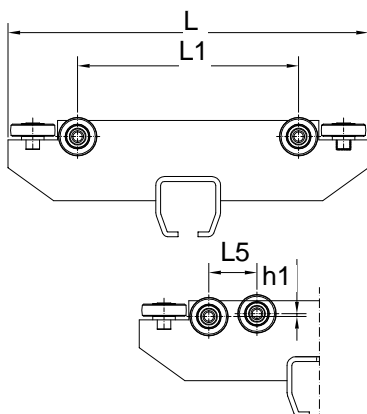


End carriage with track joint

.T54

This range of trolleys are fitted with horizontal guide rollers and are used for connecting the bridge crane to the long travel tracks.

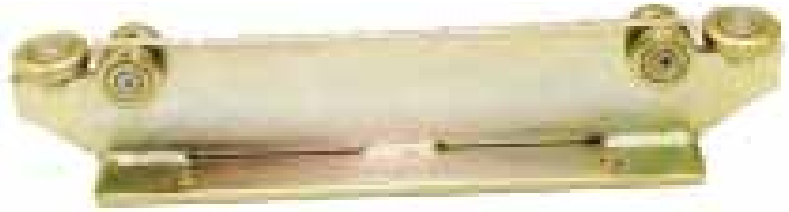
For standard crane applications it is recommended that only one end carriage is fixed on the crane bridge allowing the other to move freely and facilitate track misalignment.



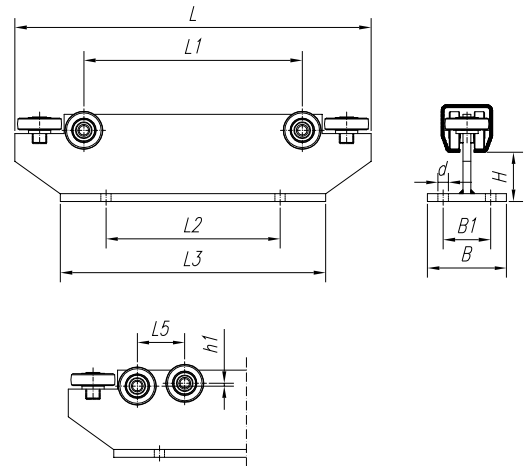
| NIKO Profile No. | 23.000 | 24.000 | 25.000 | 26.000 | 27.000 |
|-------------------------------|--------|--------|--------|--------|--------|
| End carriage with track joint | 23.T54 | 24.T54 | 25.T54 | 26.T54 | 27.T54 |
| L (mm) | 350 | 400 | 450 | 500 | 600 |
| L1 (mm) | 242 | 270 | 276 | 280 | 340 |
| L5 (mm) | 40 | 50 | 60 | 70 | 100 |
| H (mm) | 52 | 63 | 91 | 109 | 163 |
| h1 (mm) | 0,5 | 2,6 | 3,5 | 4 | 5,5 |

End carriage with flat plate

.T51



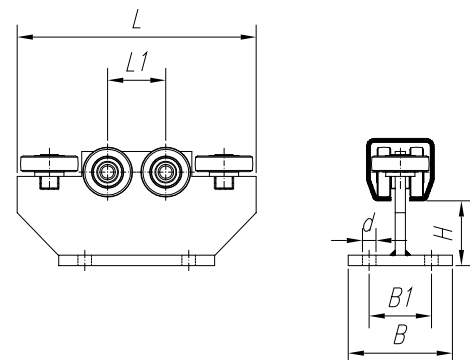
| NIKO Profile No. | 23.000 | 24.000 | 25.000 | 26.000 | 27.000 |
|------------------------------|--------|--------|--------|--------|--------|
| End carriage with flat plate | 23.T51 | 24.T51 | 25.T51 | 26.T51 | 27.T51 |
| L (mm) | 35040 | 400 | 450 | 500 | 600 |
| L1 (mm) | 242 | 270 | 276 | 280 | 340 |
| L2 (mm) | 200 | 220 | 220 | 260 | 300 |
| L3 (mm) | 290 | 315 | 335 | 370 | 440 |
| B (mm) | 60 | 70 | 100 | 120 | 150 |
| B1 (mm) | 36 | 46 | 60 | 80 | 100 |
| d (mm) | 8,5 | 11 | 13 | 17 | 21 |
| L5 (mm) | 40 | 50 | 60 | 70 | 100 |
| H (mm) | 31 | 45 | 64 | 72 | 74 |
| h1 (mm) | 0,5 | 2,6 | 3,5 | 4 | 5,5 |



End carriage with flat plate-short

.T56

| NIKO Profile No. | 23.000 | 24.000 | 25.000 | 26.000 | 27.000 |
|------------------------------------|--------|--------|--------|--------|--------|
| End carriage with flat plate-short | 23.T56 | 24.T56 | 25.T56 | 26.T56 | 27.T56 |
| L (mm) | 150 | 180 | 230 | 300 | 360 |
| L1 (mm) | 42 | 50 | 56 | 80 | 100 |
| B (mm) | 60 | 70 | 100 | 120 | 150 |
| B1 (mm) | 36 | 46 | 60 | 80 | 100 |
| d (mm) | 8,5 | 11 | 13 | 17 | 21 |
| H (mm) | 31 | 45 | 64 | 72 | 74 |

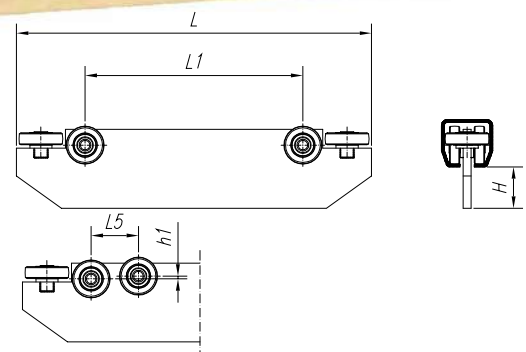


End carriage

.T52



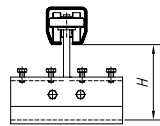
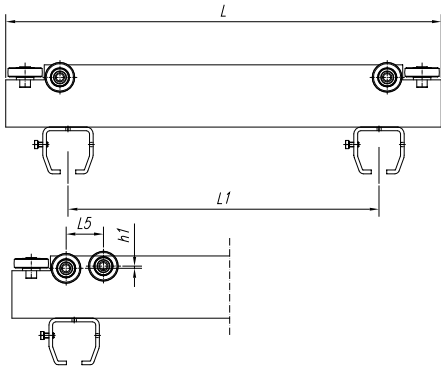
| NIKO Profile No. | 23.000 | 24.000 | 25.000 | 26.000 | 27.000 |
|------------------|--------|--------|--------|--------|--------|
| End carriage | 23.T52 | 24.T52 | 25.T52 | 26.T52 | 27.T52 |
| L (mm) | 350 | 400 | 450 | 500 | 600 |
| L1 (mm) | 242 | 270 | 276 | 280 | 340 |
| L5 (mm) | 40 | 50 | 60 | 70 | 100 |
| H (mm) | 23 | 35 | 52 | 60 | 59 |
| h1 (mm) | 0,5 | 2,6 | 3,5 | 4 | 5,5 |



End carriage with double track joint

.T53

We can supply double carriages for overhead cranes for suspending two NIKO rails.



| NIKO Profile No. | 23.000 | 24.000 | 25.000 | 26.000 | 27.000 |
|--------------------------------------|--------|--------|--------|--------|--------|
| End carriage with double track joint | 23.T53 | 24.T53 | 25.T53 | 26.T53 | 27.T53 |
| L (mm) | 410 | 630 | 700 | 820 | 860 |
| L1 (mm) | 300 | 495 | 500 | 600 | 600 |
| L5 (mm) | 40 | 50 | 60 | 70 | 100 |
| H (mm) | 64 | 74 | 91 | 126 | 152 |
| h1 (mm) | 0,5 | 2,6 | 3,5 | 4 | 5,5 |

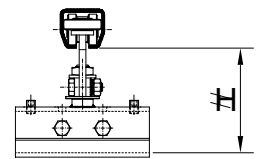
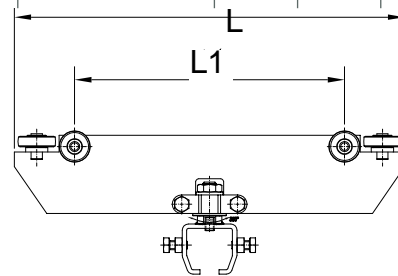
LIGHT CRANE SYSTEMS

End carriage with rotating track joint

.T55



| NIKO Profile No. | 23.000 | 24.000 | 25.000 | 26.000 | 27.000 |
|------------------|--------|--------|--------|--------|--------|
| Item Ref | 23.T55 | 24.T55 | 25.T55 | 26.T55 | 27.T55 |
| L (mm) | 350 | 400 | 450 | 500 | 600 |
| L1 (mm) | 242 | 270 | 276 | 280 | 340 |
| H (mm) | 94 | 99 | 159 | 168 | 256 |

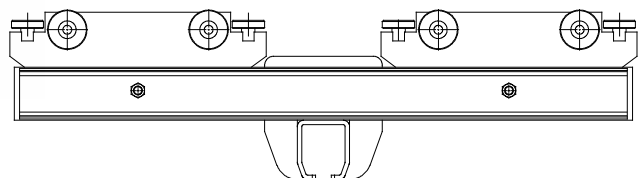


Heavy duty end carriage trolley

.T58



| NIKO Profile No. | 24.000 | 25.000 | 26.000 | 27.000 |
|------------------|--------|--------|--------|--------|
| Item Ref | 24.T49 | 25.T49 | 26.T49 | 27.T49 |

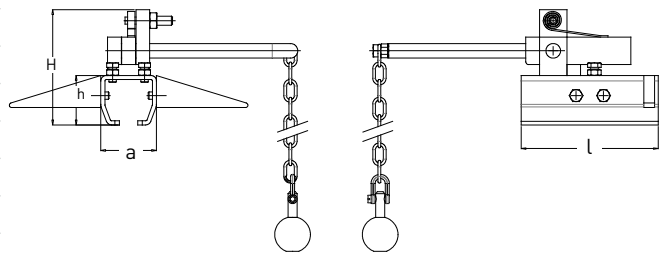


Bridge Interlock (Part 1)

.H01

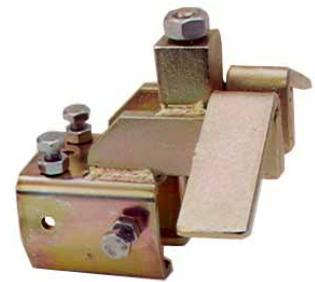


| NIKO Profile No. | 23.000 | 24.000 | 25.000 | 26.000 | 27.000 |
|------------------|--------|--------|--------|--------|--------|
| Item Ref | 23.H01 | 24.H01 | 25.H01 | 26.H01 | 27.H01 |
| a (mm) | 49 | 60 | 80 | 100 | 118 |
| h (mm) | 45 | 54 | 75 | 93 | 134 |
| l (mm) | 120 | 150 | 180 | 200 | 250 |
| H (mm) | 117 | 126 | 170 | 188 | 229 |

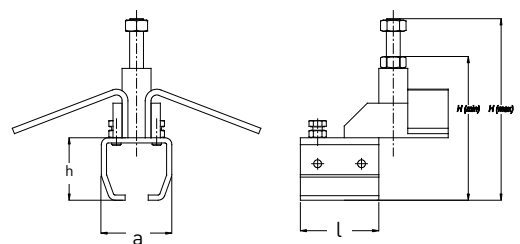


Bridge Interlock (Part 2)

.H02



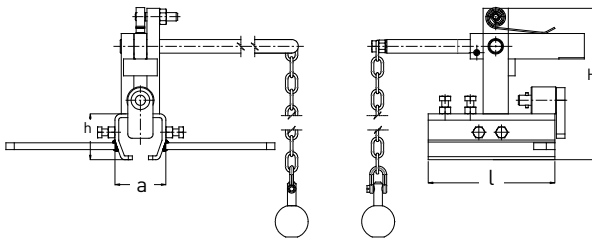
| NIKO Profile No. | 23.000 | 24.000 | 25.000 | 26.000 | 27.000 |
|------------------|--------|--------|--------|--------|--------|
| Item Ref | 23.H02 | 24.H02 | 25.H02 | 26.H02 | 27.H02 |
| a (mm) | 49 | 60 | 80 | 100 | 118 |
| h (mm) | 45 | 54 | 75 | 93 | 134 |
| l (mm) | 120 | 150 | 180 | 200 | 250 |
| H min (mm) | 121 | 130 | 168 | 186 | 291 |
| H max (mm) | 147 | 156 | 209 | 227 | 359 |



LIGHT CRANE SYSTEMS

Track transfer assembly (Part 1)

.H21

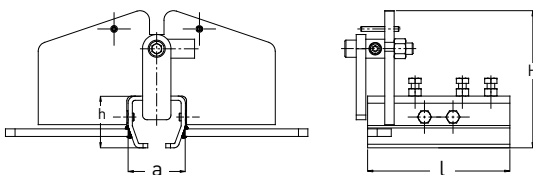
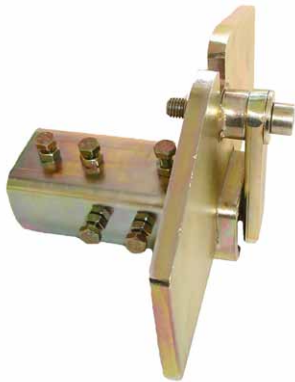


| NIKO Profile No. | 23.000 | 24.000 | 25.000 | 26.000 | 27.000 |
|------------------|--------|--------|--------|--------|--------|
| Item Ref | 23.H21 | 24.H21 | 25.H21 | 26.H21 | 27.H21 |
| a (mm) | 49 | 60 | 80 | 100 | 118 |
| h (mm) | 45 | 54 | 75 | 93 | 134 |
| l (mm) | 120 | 150 | 180 | 200 | 250 |
| H (mm) | 170 | 179 | 220 | 268 | - |

LIGHT CRANE SYSTEMS

Track transfer assembly (Part 2)

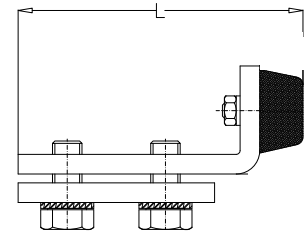
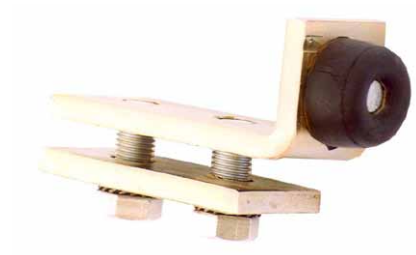
.H22



| NIKO Profile No. | 23.000 | 24.000 | 25.000 | 26.000 | 27.000 |
|------------------|--------|--------|--------|--------|--------|
| Item Ref | 23.H22 | 24.H22 | 25.H22 | 26.H22 | 27.H22 |
| a (mm) | 49 | 60 | 80 | 100 | 118 |
| h (mm) | 45 | 54 | 75 | 93 | 134 |
| l (mm) | 120 | 150 | 180 | 200 | 250 |
| H (mm) | - | 144 | 165 | 183 | - |

Track end stop

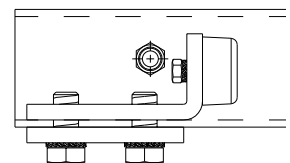
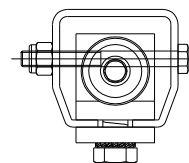
.X01



| | | | | | |
|------------------|--------|--------|--------|--------|--------|
| NIKO Profile No. | 23.000 | 24.000 | 25.000 | 26.000 | 27.000 |
| Item Ref | 23.X01 | 24.X01 | 25.X01 | 26.X01 | 27.X01 |
| L (mm) | 73 | 87 | 122 | 145 | 145 |

Track end stop with cross bolt

.X01P

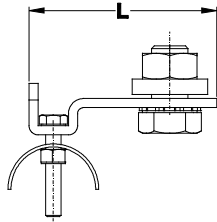


| | | | | |
|------------------|---------|---------|---------|---------|
| NIKO Profile No. | 24.000 | 25.000 | 26.000 | 27.000 |
| Item Ref | 24.X01P | 25.X01P | 26.X01P | 27.X01P |

LIGHT CRANE SYSTEMS

Cable end clamp

.K00



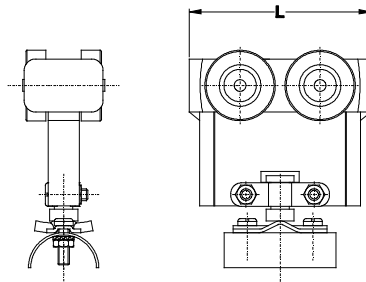
| | | | | |
|------------------|--------|--------|--------|--------|
| NIKO Profile No. | 23.000 | 24.000 | 25.000 | 26.000 |
| Item Ref | 23.K00 | 24.K00 | 25.K00 | 26.K00 |
| L (mm) | 57 | 57 | 57 | 57 |

Cable trolley (nylon)

.L00

This trolley is used for carrying flat cable for electrical power supply and can be adapted for hoses and round cables.

| | | | | | | |
|----------------------|--|--------|--|--------|--|--------|
| NIKO Profile No. | 21.000 | 23.000 | 24.000 | 25.000 | 26.000 | 27.000 |
| Cable trolley No. | 23.L00 | | 25.L00 | | 27.L00 | |
| For cable dimensions | flat up to 23x10mm & round up yo 15mm diameter | | flat up to 23x10mm & round up yo 15mm diameter | | flat up to 23x10mm & round up yo 15mm diameter | |
| L (mm) | 60 | | 80 | | 80 | |

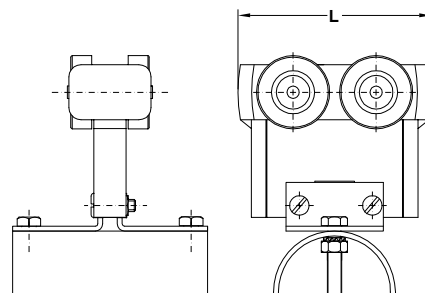


Cable trolley (nylon)

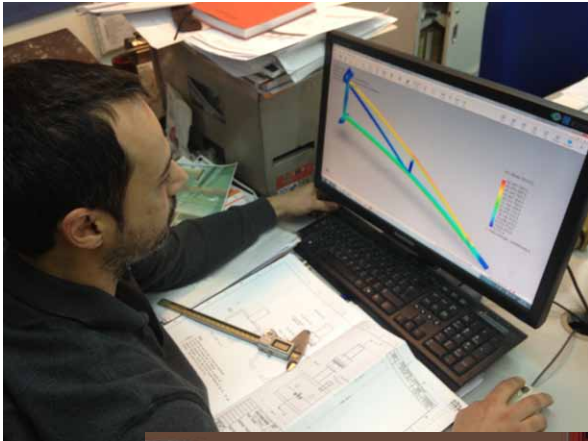
.L01

This trolley is used for carrying flat cable for electrical power supply.

| | | | | | | |
|----------------------|--------------------|--------|--------------------|--------|--------------------|--------|
| NIKO Profile No. | 21.000 | 23.000 | 24.000 | 25.000 | 26.000 | 27.000 |
| Cable trolley No. | 23.L01 | | 25.L01 | | 27.L01 | |
| For cable dimensions | flat up to 55x20mm | | flat up to 55x20mm | | flat up to 55x20mm | |
| L (mm) | 60 | | 80 | | 80 | |



Our quality control department is manned by experienced and highly skilled engineers. Our test lab is composed from endurance test stands, tensile stress equipment, hardness test machines and other laboratory equipment. Virtual stress analysis is also performed during the developing phase of every equipment.



LIGHT CRANE SYSTEMS





AUSTRIA-NIKO Vertriebs GmbH
 Hainfelderstraße 3
 A – 2564 Weissenbach
 Tel. 0043 (0) 2674 81005
 Fax 0043 (0) 2674 81006
office.at@niko.eu.com

GERMANY-NIKO Technik GmbH
 Friedrichstraße 269 A
 D – 42551 Velbert
 Tel. 0049 (0) 2051 6047 36
 Fax 0049 (0) 2051 6047 38
office.de@niko.eu.com

GREECE-Helm Hellas S.A.
 82nd Km Athens-Korinthos
 P.O. Box 209
 201 00 KORINTHOS
 Tel. 0030 (0) 27410 85803-6
 Fax 0030 (0) 27410 25368
info@niko.eu.com

POLAND- NIKO Polska
 Wojska Polskiego 97
 Wielun 98-300
 Tel. 0048 504 00 35 56
[Email: info.pl@niko.eu.com](mailto:info.pl@niko.eu.com)

UNITED KINGDOM-NIKO Ltd
 Unit 12 Southfield Road
 Kineton Road Ind. Est. Southam
 Warwickshire – CV47 OLT – UK
 Tel. 0044 (0) 1926 813111
 Fax 0044 (0) 1926 815599
Sales@niko-ltd.co.uk

USA-NIKO Track
 300 Highpoint Ave
 Portsmouth, RI. 02871 USA
 Tel. 001 (0) 401 683 7525
 Fax 001 (0) 401 683 6450
Sales@NikoTrack.com

TRADITION IS PROGRESS PRESERVED, PROGRESS IS TRADITION CONTINUED.

Helm Hellas 1972–2012

A family business for 40 years, Helm Hellas has been built on the twin foundations of Tradition and Progress, always heading towards a successful economic future.

QUALITY IS THE RESULT OF ATTENTION TO DETAIL.

Quality will always be as standard for us, our products, our staff and our partners.

OUR VISION.

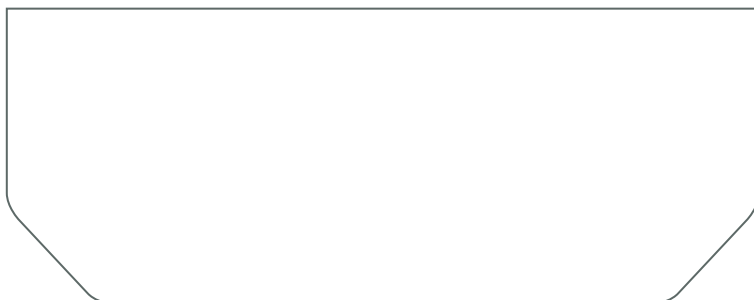
We are an international company and our goal is to be market leaders in each of our business sectors.

OUR VALUES

- ✓ We want to offer our customers the best quality at a reasonable price.
- ✓ We strive for continual improvement in our quality procedures – because we believe the company that doesn't move forward will be left behind.
- ✓ We respond to any demand on the market with the ongoing development of new products.
- ✓ We support our co-workers by ensuring they are highly motivated and well qualified.
- ✓ We want to expand into new sales markets to continue to win satisfied customers.



Your **NIKO** agent will be happy to advise you:



Complete product range **NIKO**:

- A1 – Residential Sliding Door Hardware
- A2 – Sliding Curtains Hardware
- B1 – Heavy Duty Sliding Door Hardware
- B2 – Folding and Harmonica Door Hardware
- B3 – Garage Door and Door around the corner Hardware
- C1 – Overhead Conveyor Systems
- C2 – Light Cranes
- C3 – Cable Trolleys and Festoon Systems
- C4 – Personal Fall Arrest Systems (EN 795)
- D – Sliding Gate Hardware

www.niko.eu.com