

# PRIMERGY TX1310 M3

## *System configurator and order-information guide*

December 2019

### Contents

Instructions

Configuration diagram

Configurator

0 System software

I Basic unit

II Processor

III Memory

IV Graphics

V Accessible drives

VI RAID Controller

VII Hard disk drives

VIII Communication/Network

IX USB devices

X Miscellaneous

Change report



**PRIMERGY Server**

# Instructions

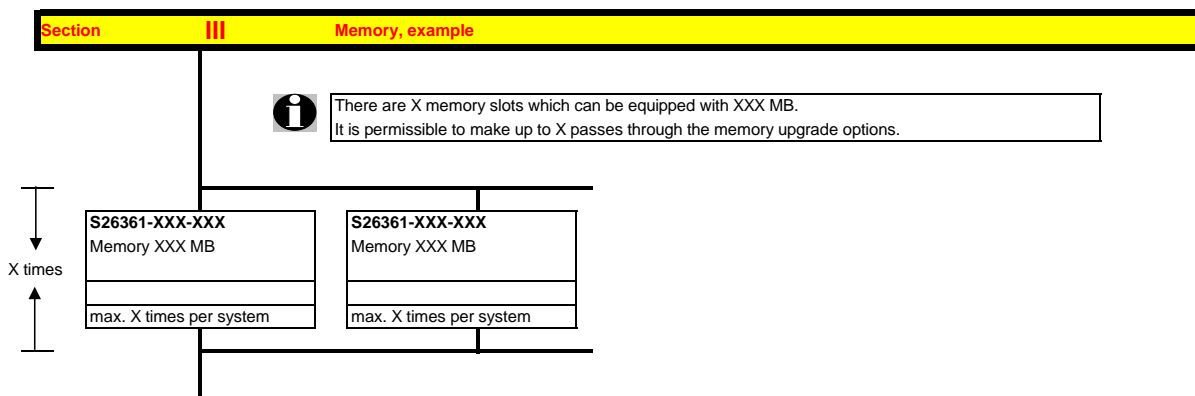
This document contains basic product and configuration information that will enable you to configure your system via PC-/ System-Architect.

Only these tools will ensure a fast and proper configuration of your PRIMERGY server or your complete PRIMERGY Rack system.

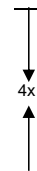
You can configure your individual PRIMERGY server in order to adjust your specific requirements.

The System configurator is divided into several chapters that are identical to the current price list and PC-/ System-Architect

Please follow the lines. If there is a junction, you can choose which way or component you would like to take. Go through the configurator by following the lines from the top to the bottom.



In one chapter you can only select as many components (here 4x) as the arrow indicates.



Please note that there are information symbols which indicate necessary information.



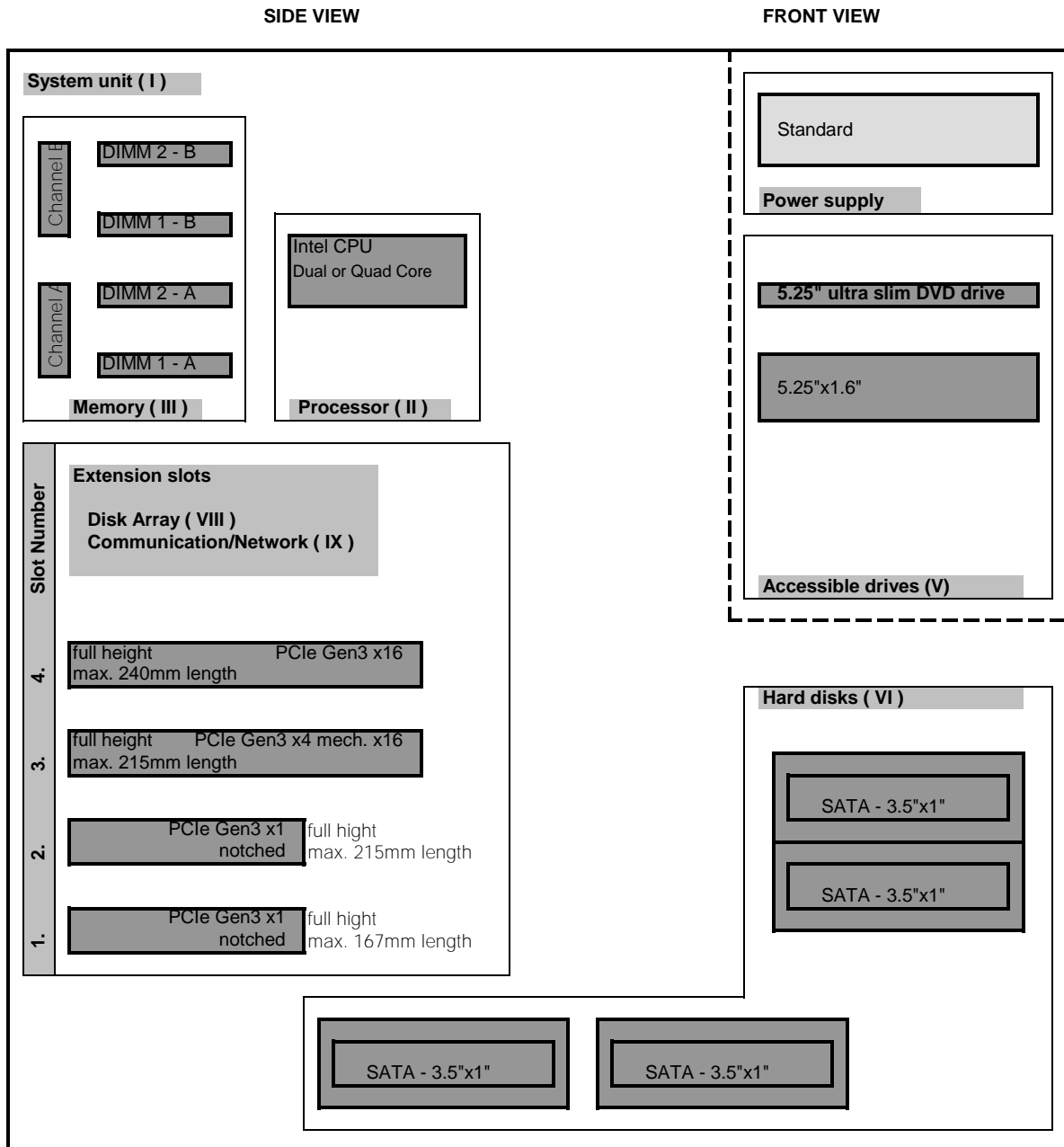
**For further information see:**

[http://ts.fujitsu.com/products/standard\\_servers/index.html](http://ts.fujitsu.com/products/standard_servers/index.html) (internet)

[https://partners.ts.fujitsu.com/com/order-supply/configurators/primergy\\_config/Pages/default.aspx](https://partners.ts.fujitsu.com/com/order-supply/configurators/primergy_config/Pages/default.aspx) (extranet)

Prices and availability see price list and PC-/ System-Architect  
 Subject to change and errors excepted

## Configuration diagram PRIMERGY TX1310 M1



Key:

- Included in basic unit
- Option

Start PRIMERGY TX1310 M1

**Section | Basic unit**



**System unit consisting of:**

- \* Housing including standard power supply (no redundancy)
- \* Imprint of MAC Address on system label and delivery note as standard
- \* heat sink for CPU

**Systemboard with:**

- \* 4 PCI expansion slots:
  - 2x PCIe Gen3 x1, notched
  - 1x PCIe Gen3 x4, mechanically x16 (may be used for VGA Port option)
  - 1x PCIe Gen3 x16
- \* Slot for optional TPM module
- \* 4 memory slots for up to 64GB (2400MHz PC4 19200) unbuffered DDR4 RAM (ECC) max. 16GB modul per slot
- \* 2 bays 5.25" for accessible drives (1x ultra slim for DVD, 1x 1,6" high)
- \* 4 LFF (3.5" Large Form Factor) bays 1" high for non hot plug SATA HD
- \* SATA controller with up to 4 HDD's using Intel C236 Chipset
- \* Intel CPU internal Graphics Controller (pGFX) with shared Memory
  - 1600 x 1200 pixel with 16 bit colours and 75 Hz
  - 1280 x 1024 pixel with 16/32 bit colours and 120/75 Hz
  - 1152 x 864 pixel with 16/32 bit colours and 160/100Hz
  - 1024 x 768 pixel with 16/32 bit colours and 200/120Hz
  - 800 x 600 and 640 x 480 pixel with 32 bit colours and 200Hz
- \* Intel 10/100/1000 Mb/s ("Jacksonville" Intel i219LM) on-board LAN supporting WoL and PXE

**Cables included in Base Unit:**

1. SATA cabel for CD/DVD
2. 4 x SATA cabel in basic unit

**ServerView Suite Software package incl. ServerView Installation Manager, Management Software and Updates**

**External Interfaces:**

- 1x RS-232-C (serial, 9 pins) - cable option
- 1x DP - optional VGA (15 pins) using adapter card
- 1x USB3.0 Intern (Type A) for backup devices or USB Stick
- 6x USB 3.0 ( 2x frontside, 4x rearside)
- 3x USB 2.0 ( 2x rearside, 1x internal USSD / UFM )
- 1x LAN RJ45

**S26361-K1581-V101**  
**SATA basic unit Floorstand without CPU and Memory**  
 - one CPU / 1 to 4 Memory module(s) has to be selected via CPU / Memory order codes

**Standard PSU for full configuration**



Be aware of import restrictions for TPM!  
 Only 1 TPM per system.  
 Loose delivery for later integration possible for customer.

<p><b>S26361-F3552-E6</b></p> <p>TPM Module V1.2</p> <p>Trusted Platform Module on Motherboard</p> <p>Usage according to import restrictions</p> <p>max. 1x per system</p>	<p><b>S26361-F3552-E10</b></p> <p>TPM Module V2.0</p> <p>Trusted Platform Module on Motherboard</p> <p>Usage according to import restrictions</p> <p>max. 1x per system</p>
--	---

<p><b>S26361-F3552-L6</b></p> <p>TPM Module V1.2 add-on kit for later integration (loose delivery)</p> <p>Trusted Platform Module on Motherboard</p> <p>Usage according to import restrictions</p> <p>max. 1x per system</p>
--

<p><b>S26361-F3552-L10</b></p> <p>TPM Module V2.0 add-on kit for later integration (loose delivery)</p> <p>Trusted Platform Module on Motherboard</p> <p>Usage according to import restrictions</p> <p>max. 1x per system</p>
---

A

A

**Section II Processor**

One of following CPU's has to be selected for an orderable basic unit

Dual-Core CPU's	
- 1x 64-bit Intel Celeron (2MB SLC), Pentium (3MB SLC) or Core-i3 (4MB TLC) occupies socket for one CPU	
<b>Celeron</b> Celeron G3930 2.9GHz 2C/2T 2MB 2133MHz (51W)	S26361-F4029-E103 on special release
<b>Pentium</b> Pentium G4560 3.5GHz 2C/4T 3MB 2400MHz (54W)	S26361-F4029-E104
<b>Core i3</b> Core i3-7100 3.9GHz 2C/4T 3MB 2400MHz (51W)	S26361-F4029-E107
Quad-Core XEON CPU's	
- 1x 64-bit Intel Xeon UP (8MB shared TLC = Third Level Cache) Hyper-Threading; 1600 MHz DDR3 Bus and heat pipe occupies socket for one CPU	
Xeon E3-1205v6 3.0GHz 4C/4T 8MB 2400MHz (65W)	S26361-F4029-E105
Xeon E3-1225v6 3.3GHz 4C/4T 8MB 2400MHz Turbo (73W)	S26361-F4029-E125
Xeon E3-1245v6 3.7GHz 4C/8T 8MB 2400MHz Turbo (73W)	S26361-F4029-E145

**Section III Memory**

**i** There are 2 memory banks with 2 DIMM slots each.  
**Single channel memory configuration allow maximum flexibility:**  
 Additional memory can be configured as single memory modules.  
**Dual channel memory configurations for maximum performance:**  
 For optimum performance memory has to be configured in pairs of memory modules with identical size.  
 max. 64GB unbuffered DDR4 RAM for UDIMMs with 16GB modules  
**Note\*: Memory is not included in the base unit and has to be configured separately, min 1x.**

2/4x

- One DDR4- ub ECC memory module	
4GB (1x4GB) 1Rx8 DDR4-2400 U ECC	S26361-F3909-E614
8GB (1x8GB) 1Rx8 DDR4-2400 U ECC	S26361-F3909-E615
16GB (1x16GB) 2Rx8 DDR4-2400 U ECC	S26361-F3909-E616
Choose up to 2/4 order codes above.	

**Section IV Graphics**



Intel CPU internal Graphics Controller (pGFX) with 64MB RAM

**DP to VG must be installed in slot 3**      **PGRA must be installed in slot 4**      **PGRA must be installed in slot 4**

<p><b>S26361-F2391-E220</b> DP to VGA Adapter (internal) adds a VGA Connector to the system</p> <p>occupies PCIe Slot #3</p> <p>full height bracket max. 1x per system</p>	<p><b>S26361-F2748-E538</b> PGRA CP NVS 1GB VGA PCIe x16 NVIDIA NVS315 1024 MB PCIe-x16</p> <p>Connectors: 1x LFH 59 cable kit for 2x DVI or 2x VGA cable kits included</p> <p>Dual head + professional 2-D + 3-D supported for Windows OS native driver support for Linux OS</p> <p>full height bracket max. 1x per system</p>	<p><b>S26361-F4066-E400</b> PGRA CP NVIDIA Quadro P400 NVIDIA Quadro P400 2GB PCIe 3.0 x16</p> <p>Connectors: 3x Mini-DP no cable kit included</p> <p>Triple head + professional 2-D + 3-D supported for Windows OS native driver support for Linux OS</p> <p>full height bracket max. 1x per system</p>
		<p><b>S26361-F4066-E11</b> <b>S26361-F4066-L11</b> MiniDP-DP ADAPTER max. 3x per card</p>
	<p><b>S26361-F4066-E12</b> <b>S26361-F4066-L12</b> DP-VGA ADAPTER max. 3x per card</p>	<p><b>S26361-F4066-E13</b> <b>S26361-F4066-L13</b> DP-DVI ADAPTER max. 3x per card</p>

The high end optional NVIDIA NVS315 graphic card offers dual head operation and full 3D video support.  
**Remote Video direction via iRMC must be disabled.**  
The cables for either two times DVI-I or VGA connections are part of the delivery.  
This PCIe-x16 card can also be installed in notched PCIe-x4, x8 or standard x16 slot.  
Only one card per server is allowed.

The high end optional NVIDIA Quadro P400 graphic card offers triple head operation and full 3D video support.  
**Remote Video direction via iRMC must be disabled.**  
Only one card per server is allowed.

- S26361-F2748-L538**  
PGRA CP NVS 1GB VGA PCIe x16  
for loose delivery
- S26361-F4066-L400**  
PGRA CP NVIDIA Quadro P400  
for loose delivery
- S26361-F2391-L220**  
DP to VGA Adapter (internal)  
for loose delivery
- S26391-F6055-L280**  
DP to VGA Adapter (external)  
loose delivery only

B

B

**Section V Accessible drives**

**i** There are 2 drive bays (2x 5.25") for accessible drives.  
 One is ultra slim and one 1.6" high

<b>S26361-F3778-E1</b> <b>S26361-F3778-L1</b> DVD-RW supermulti ultra slim  all formats, DUAL/DL, DVD-RAM only W2K, W3K and Linux 9.5mm, black bezel max. 1x per system	<b>S26361-F3641-E6</b> <b>S26361-F3641-L6</b> Blu-ray Triple Writer ultra slim  6x BD-RW, 8x DVD, 24x CD, BD DL and all CD/DVD formats 9.5mm, black bezel max. 1x per system	<b>S26361-F3718-E2</b> <b>S26361-F3718-L2</b> DVD-ROM  16x DVD; 48x CD-ROM 9.5mm, black bezel max. 1x per system
--	---	--

<b>S26361-F3750-E4</b> <b>S26361-F3750-L4</b> RDX Drive USB3.0 5.25" internal 100MB/s, USB 3.0 Connector: USB 3.0 "B" with USB cable without RDX cartridges 1.6 * 5.25", black bezel max. 1x per system
---

**i** RDX cartridges must be ordered separately  
 RDX 500GB = S26361-F3857-L500  
 RDX 1TB = S26361-F3857-L600  
 RDX 2TB = S26361-F3857-L700  
 RDX 3TB = S26361-F3857-L800

C

C

**Section VI RAID-Controller**



**HW RAID plug in cards not available in TX1310 M3. Please use onboard RAID.**

**Section VII Hard disk drives**

There is a 6 port SATA controller in the Base Unit.  
 Up to 4 SATA LFF (3.5") hard disks can be configured.

Hard Disk Sector Format Information:  
 512n HDD: 512 byte sectors on the drive media.  
 512e (e-emulation) HDD: 4K physical sectors on the drive media with 512 byte logical configuration.  
 512e HDD Disk Drives: VMware 6.0 or earlier is not supported.

HDD Classes:  
 Economic (ECO) SATA: Entry Class Drives.  
 Business-Critical (BC) -SATA=Nearline SATA Enterprise Drives / 7.2Krpm, SATA 6G.

**3.5" NON hot plug Drives for internal bays**

<b>HDD SATA 3.5" 7.2K 512n (LFF) Enterprise Business Critical with NON hot plug/hot replace tray</b>						
Capacity	RPM	Interface	Sector		order code E-part	order code L-part
1TB	7 200	SATA 6Gb/s	512n		<b>S26361-F5637-E100</b>	<b>S26361-F5637-L100</b>
2TB	7 200	SATA 6Gb/s	512n		<b>S26361-F5637-E200</b>	<b>S26361-F5637-L200</b>
4TB	7 200	SATA 6Gb/s	512n		<b>S26361-F5637-E400</b>	<b>S26361-F5637-L400</b>

Choose up to 4 order codes above.

<b>HDD SATA 3.5" 7.2K 512e (LFF) Enterprise Business Critical with NON hot plug/hot replace tray</b>						
Capacity	RPM	Interface	Sector		order code E-part	order code L-part
6TB	7 200	SATA 6Gb/s	512e		<b>S26361-F5639-E600</b>	<b>S26361-F5639-L600</b>
8TB	7 200	SATA 6Gb/s	512e	as soon as available	<b>S26361-F5639-E800</b>	<b>S26361-F5639-L800</b>
8TB	7 200	SATA 6Gb/s	512e		<b>S26361-F3905-E800</b>	<b>S26361-F3905-L800</b>
10TB	7 200	SATA 6Gb/s	512e		<b>S26361-F3905-E100</b>	<b>S26361-F3905-L100</b>
12TB	7 200	SATA 6Gb/s	512e		<b>S26361-F3905-E120</b>	<b>S26361-F3905-L120</b>

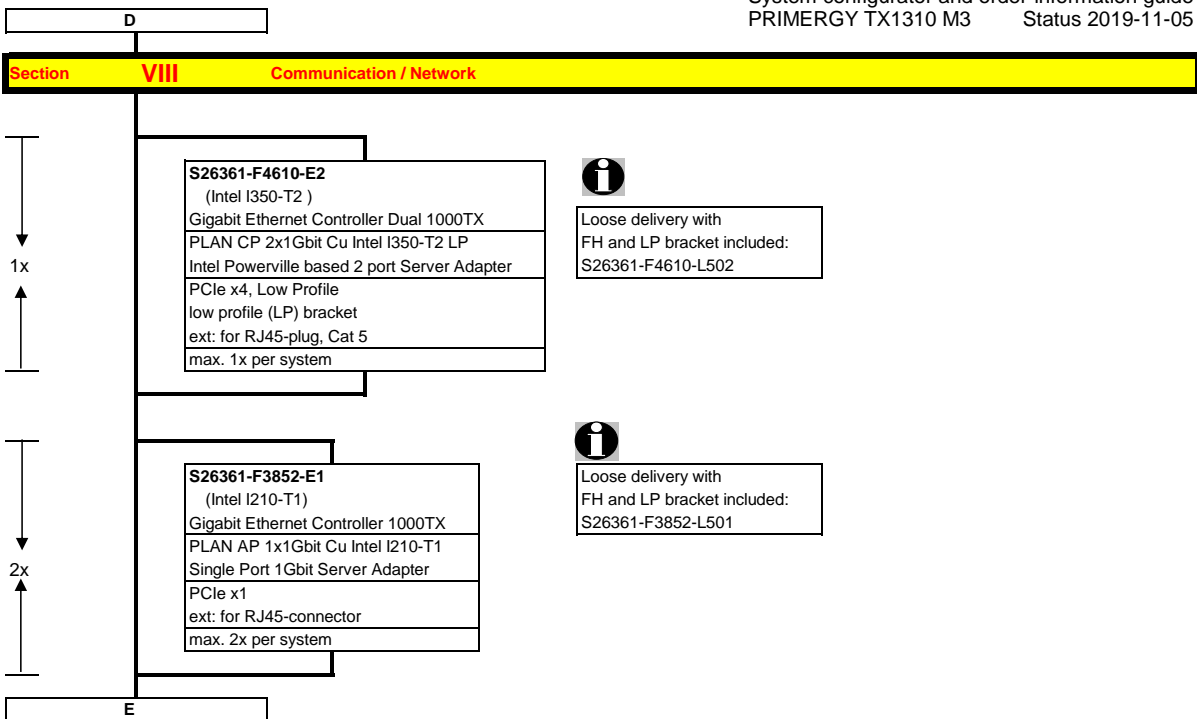
Choose up to 4 order codes above.

<b>HDD SATA 3.5" 7.2K (LFF) ECO with NON hot plug/hot replace tray</b>						
Capacity	RPM	Interface	Sector		order code E-part	order code L-part
500GB	7 200	SATA 6Gb/s	512e		<b>S26361-F5641-E500</b>	<b>S26361-F5641-L500</b>
1TB	7 200	SATA 6Gb/s	512e		<b>S26361-F3952-E100</b>	<b>S26361-F3952-L100</b>

Choose up to 4 order codes above.

D





## Chapter 15 - Accessories

Q

<http://www.fujitsu.com/fts/products/computing/peripheral/accessories/index-facts.html>

**USB Mouse:**

Mouse M520 Black	S26381-K467-E100	S26381-K467-L100
Mouse M520 Grey	S26381-K467-E101	S26381-K467-L101
Mouse M530 Black	n/a	S26381-K468-L100
Mouse M530 Grey	n/a	S26381-K468-L101



**USB Memory Sticks - Available until August 2020. No successor planned.**

AADATA UC350 USB3.1 Type C OTG Flash Drive 64GB		S26391-F6048-L464
---	--	-------------------

**USB Keyboards for Tower Servers for following countries:**

USB professional Keyboard KBPC PX ECO	Country version	FUJITSU Keyboard KB521 USB (grey)
	US/ int 105 keys (UK keyboard + US int. Layout)	S26381-K521-E102
S26381-K341-E104	Czech/Slovak	S26381-K521-E104
S26381-K341-E110	US 104 keys (US keyboard + US layout)	S26381-K521-E110
S26381-K341-E120	Germany	S26381-K521-E120
S26381-K341-E122	Germany / Int	S26381-K521-E122
S26381-K341-E140	France	S26381-K521-E140
S26381-K341-E154	Sweden / Finland	S26381-K521-E154
S26381-K341-E165	United Kingdom	S26381-K521-E165
S26381-K341-E170	Switzerland	S26381-K521-E170
S26381-K341-E180	Spain	S26381-K521-E180
S26381-K341-E185	Italy	S26381-K521-E185

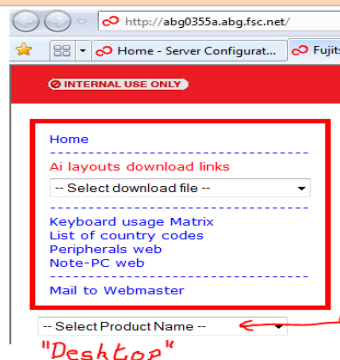
**USB Optical Disc Drive**

External Ultra Slim Portable DVD Writer (Hitachi-LG)	S26341-F103-L142
--	------------------



Please find the layout of all Fujitsu keyboards here:  
<http://abg0355a.abg.fsc.net/>

R



## Chapter 14 - ErP Lot 9 restriction

0

\*Region kit Europe must be ordered for shipment to ship in EU and EFTA countries to apply ErP Lot9 restriction

Region Kits, 1x per System	
Region Kit APAC/EMEA/India, Contains warranty sheet and safety instructions for APAC, EMEA and India	<b>S26361-F1452-E100</b>
Region Kit America, Contains warranty sheet, registration hints and safety instructions for	<b>S26361-F1452-E130</b>

Region Kits, 1x per System	
Region Kit Europe*, Contains warranty sheet and safety instructions in German, English, French, Spanish, Italian, Polish, Russian and Welsh language	<b>S26361-F1452-E140</b>

ErP Lot9 Restriction for 4 HDD configuration, 1x per System	
ErP Lot 9 configuration for up to 4 HDD	<b>S26361-F3776-E111</b>

ErP Lot9 Restriction for 2 HDD configuration, 1x per System	
ErP Lot 9 configuration for up to 2 HDD	<b>S26361-F3776-E113</b>

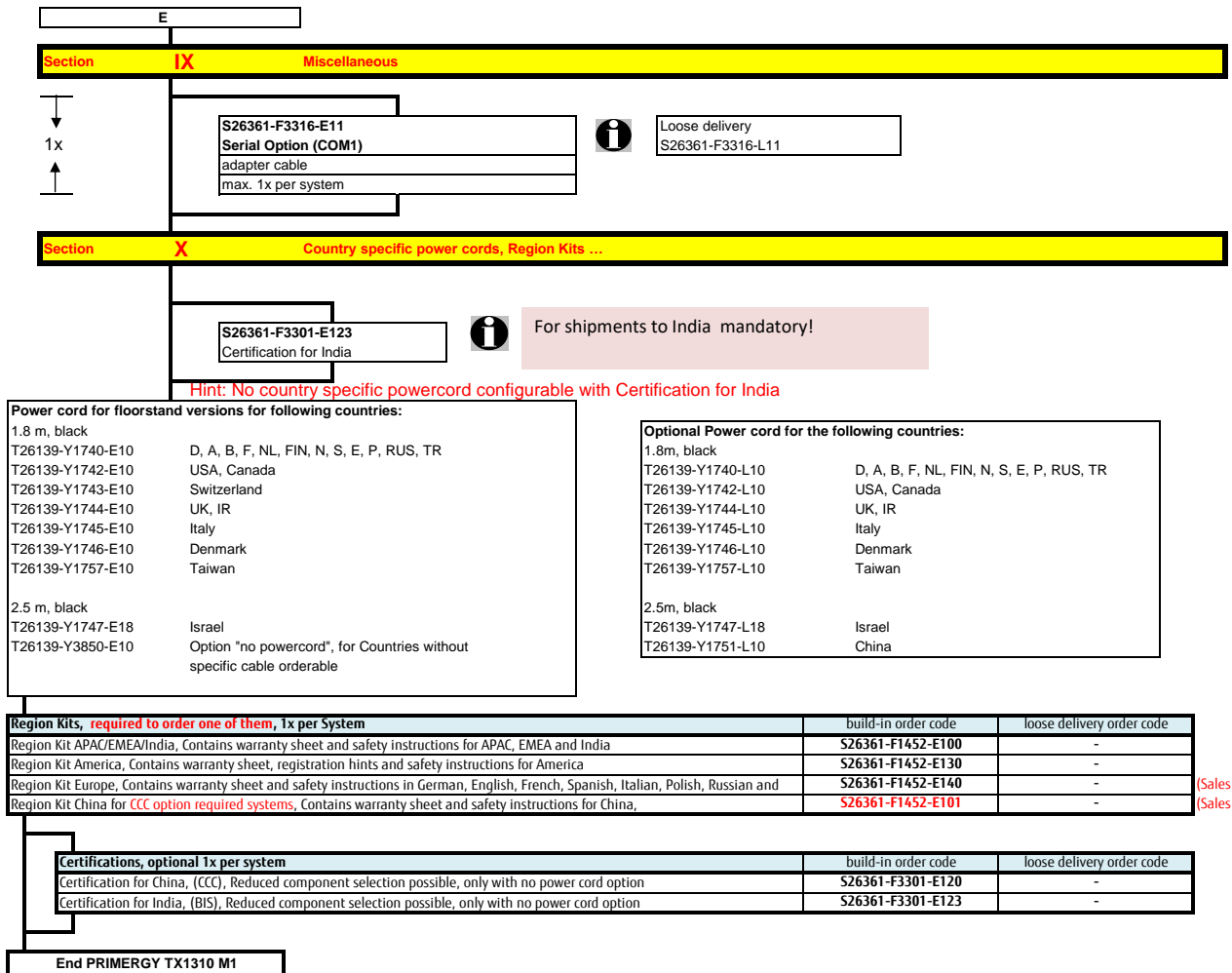
Restriction for ErP Lot 9 directive,  
Not allowed are :

- CPU Celeron G3930
- CPU Pentium G4560

Restriction for ErP Lot 9 directive,  
Not allowed are :

- CPU Celeron G3930
- more than 3x 3.5" HDD (max 2 is ok)

p



**Power cord for floorstand versions for following countries:**

1.8 m, black	
T26139-Y1740-E10	D, A, B, F, NL, FIN, N, S, E, P, RUS, TR
T26139-Y1742-E10	USA, Canada
T26139-Y1743-E10	Switzerland
T26139-Y1744-E10	UK, IR
T26139-Y1745-E10	Italy
T26139-Y1746-E10	Denmark
T26139-Y1757-E10	Taiwan
2.5 m, black	
T26139-Y1747-E18	Israel
T26139-Y3850-E10	Option "no powercord", for Countries without specific cable orderable

**Optional Power cord for the following countries:**

1.8m, black	
T26139-Y1740-L10	D, A, B, F, NL, FIN, N, S, E, P, RUS, TR
T26139-Y1742-L10	USA, Canada
T26139-Y1744-L10	UK, IR
T26139-Y1745-L10	Italy
T26139-Y1746-L10	Denmark
T26139-Y1757-L10	Taiwan
2.5m, black	
T26139-Y1747-L18	Israel
T26139-Y1751-L10	China

Region Kits, <b>required to order one of them, 1x per System</b>	build-in order code	loose delivery order code
Region Kit APAC/EMEA/India, Contains warranty sheet and safety instructions for APAC, EMEA and India	<b>S26361-F1452-E100</b>	-
Region Kit America, Contains warranty sheet, registration hints and safety instructions for America	<b>S26361-F1452-E130</b>	-
Region Kit Europe, Contains warranty sheet and safety instructions in German, English, French, Spanish, Italian, Polish, Russian and	<b>S26361-F1452-E140</b>	-
Region Kit China for <b>CCC option required systems</b> , Contains warranty sheet and safety instructions for China,	<b>S26361-F1452-E101</b>	-

(Sales re  
(Sales re

Certifications, optional 1x per system	build-in order code	loose delivery order code
Certification for China, (CCC), Reduced component selection possible, only with no power cord option	<b>S26361-F3301-E120</b>	-
Certification for India, (BIS), Reduced component selection possible, only with no power cord option	<b>S26361-F3301-E123</b>	-

End PRIMERGY TX1310 M1

## Change Report

Date	Order number	Changes
2020-05-29	S26361-F3301-E100	removed Made in Germany sticker
2020-05-26	S26361-K1581-V201	Standard PSU for basic configuration EOL
2020-03-18	S26361-F1452-E101	added Region kit China
2020-03-12	S26361-F3776-E111/E113	update ErP Lot9 restriction
2020-03-04	ErP Lot9 restriction	added in new sheet ErP Lot9
2019-12-06	HDDs	updated the description about Hard Disk Sector Format Information
2019-11-08	T26139-Y1751-E10	removed power cord
2019-11-05	S26391-F6048-L464	New USB memory stick accessory device 64GB. No longer 32GB.
2018-10-29	HDDs / S26361-F5639-E800/L800	added
2018-09-18	Basic unit, Processor	Update Graphic card information.
2018-07-11	Basic unit, Processor	Update Graphic card information.
2018-07-06	Basic unit, Processor	Update Graphic card information.
2018-01-15	S26361-F3905-E120	added
2017-11-22	S26361-F4029-E105	Xeon E3-1205v6 added
2017-06-06	HDDs' Note	updated
2017-05-16	S26361-F2542-L328	Filler for removed RDX deleted
2017-04-27	USB Devices	New ext. ODD added
2017-03-28	S26361-F3909-E615	corrected from dual rank to single rank
2017-03-14		Slot # for VGA Adapter and Graphicscard corrected
2017-03-10	S26361-F6055-L280	external DP to VGA Adapter added (L-Part only)
2017-02-02		added USB devices
2017-01-18	S26361-F3316-E11	COM1 option added
2017-01-18	S26361-F2391-E220	internal DP to VGA adapter added
2017-01-18	S26361-F3718-E2	DVD ROM added
2017-01-18		TPM section reworded
2017-01-18	S26361-F3516-E1	old CT DT LAN removed (successor S26361-F3852-E1 i210-T1 available)
2017-01-13		updated RDX
2016-12-14	T26139-Y1747-E18/L18	added power cord for Israel
2016-12-14	S26361-F3905/5637/5639/5641-*	added
2016-12-01	S26361-F4029-E103/E104/E107	added
2016-10-24		HDDs updated
2016-10-11		memory modules corrected
2016-10-11		CPUs corrected
2016-10-11		order codes for base units corrected
2016-06-27		First Draft