

The Oak Interior
including The E. Hopwell Collection, Pewter and Textiles
Wednesday 24 April 2013 at 10am
Thursday 25 April 2013 at 10am
Chester

Bonhams

New House
150 Christleton Road
Chester CH3 5TD
bonhams.com

Viewing

Friday 19 April 10am to 4pm
Sunday 21 April 11am to 2pm
Monday 22 April 10am to 4pm
Tuesday 23 April 10am to 4pm
Wednesday 24 April 8.30am to 4pm
Thursday 25 April 8.30am to 9.45am

Bids

+44 (0) 20 7447 7448
+44 (0) 20 7447 7401 fax
To bid via the internet
please visit www.bonhams.com

Please note that bids should be submitted no later than 24 hours before the sale.
New bidders must also provide proof of identity when submitting bids. Failure to do this may result in your bids not being processed.

Live online bidding is available for this sale

Please email bids@bonhams.com with "Live bidding" in the subject line 48 hours before the auction to register for this service.

Bonhams 1793 Limited
Registered No. 4326560
Registered Office: Montpelier Galleries
Montpelier Street,
London SW7 1HH
+44 (0) 20 7393 3900
+44 (0) 20 7393 3905 fax

Enquiries

Day I
Pewter
David Houlston
+44 (0) 1244 353 119
david.houlston@bonhams.com

The E. Hopwell Collection of
Metalware & Treen
Megan Wheeler
+44 (0) 1244 353 127
megan.wheeler@bonhams.com

Textiles
Claire Browne
+44 (0) 1564 732 969
claire.browne@bonhams.com

Day II
Furniture
David Houlston
+44 (0) 1244 353 119
david.houlston@bonhams.com

Works of Art
Megan Wheeler
+44 (0) 1244 353 127
megan.wheeler@bonhams.com

Sale Number: 21122

Catalogue: £20 (£25 by post)

Customer Services
Monday to Friday 8.30am to 6pm
+44 (0) 20 7447 7447

Please see back of catalogue for important notice to bidders

Illustrations

Back cover: Lot 496
Inside front cover: Lot 265
Inside back cover: Lot 289



Bonhams 1793 Ltd Directors
Robert Brooks Chairman, Colin Sheaf Deputy Chairman,
Malcolm Barber Group Managing Director,
Matthew Girling CEO UK and Europe,
Geoffrey Davies, Jonathan Horwich, James Knight,
Patrick Meade, Caroline Olliphant, Hugh Watchorn.

Bonhams UK Ltd Directors
Colin Sheaf Chairman, Jonathan Baddeley, Antony Bennett,
Matthew Bradbury, Harvey Cammell, Simon Cottle,
Andrew Currie, David Dallas, Paul Davidson, Jean Ghika,
Charles Graham-Campbell, Miranda Grant, Robin Hereford,
Asaph Hyman, Charles Lanning, Camilla Lombardi,
Fergus Lyons, Paul Maudsley, Gordon McFarlan,
Andrew McKenzie, Simon Mitchell, Jeff Muse, Mike Neill,
Charlie O'Brien, Giles Peppiatt, Peter Rees, Julian Roup,

Iain Rushbrook, John Sandon, Tim Schofield,
Veronique Scorer, James Stratton, Roger Tappin,
Shahin Virani, David Williams, Michael Wynell-Mayow.

The Oak Interior Sale Day I:
Wednesday 24 April 2013

Lots 1 - 60: Pewter

1

An 18th century Jersey pot lidded pewter measure, circa 1800
The pear-shaped body with two double incised lines, the heart-shaped lid stamped with the ownership initials *SLR*, twin-acorn thumbpiece, 27.5cm high
£150 - 200

2

A mid-18th century Guernsey pint lidded pewter measure, circa 1760
Having a pear-shaped body with broad fillet and multiple incised rings, the heart-shaped lid with twin-acorn thumbrest, touchmark of Samuel Morant, Southampton, (w.1746-1778), (PS 13016), together with *LONDON* label and ownership initials *EGB* stamped to lid, 18cm high
£100 - 150

3

An 18th century Jersey pint lidded pewter measure, circa 1800
Having a single incised line to pear-shaped body, heart-shaped lid and twin-acorn thumbpiece, crowned *GR* to collar, 16.5cm high
£100 - 150

4

A mid-18th century Guernsey pint lidded pewter measure, circa 1740-50
The pear-shaped body with two broad fillets, the heart-shaped lid with twin-acorn thumbpiece and touchmark of Ann Carter, Southampton, (w.1730-1754), (PS 90), 18cm high
£300 - 400

5

A Scottish mutchkin pewter tappit hen, circa 1800
The body of typical shouldered form, with erect thumbpiece and engraved initials *RH* to the lid, plouk mark to the inside, 17.5cm high
£300 - 500

6

An early 19th century half-pint dome-lidded spouted pewter tankard
Having a tapering drum with single fillet, solid chair-back thumbpiece, single-curve handle with ball terminal, probable maker's mark and verification mark to rim, 12cm high
£100 - 150

7

An engraved quart pewter mug
Having a glass bottom, the drum engraved with 'vignettes' relating to ale houses, single-curve handle, height 17cm
£100 - 150

8

A mid-18th century dome-lidded pewter tankard, circa 1750
With a single fillet to tulip-shaped body, heart-pierced chair-back thumbpiece, single-curve handle with hooded ball terminal, touchmark in base of Allen Bright, Bristol, (w.1742-1763), (PS 960), capacity 35 fl.oz., 20cm high
£300 - 400

9

A mid-18th century dome-lidded pewter tankard, circa 1760
With single fillet to tulip-shaped body, heart-pierced chair-back thumbpiece, single-curve handle with hooded ball terminal, touchmark inside base of Ash & Hutton, Bristol, (w.1741-1768), (PS 227), capacity 30 fl.oz.,
£200 - 300

10

An 18th century dome-lidded pewter tankard, circa 1770
With single fillet to tulip-shaped body, open chair-back thumbpiece, double-curve handle with fish-tail terminal, touchmark inside base of Burgum and Catcott, Bristol, (w.1765-1779), (PS 1182, OP 708), capacity 30 fl.oz., 19cm high
£200 - 300

Provenance: *The Sandy Law Collection*, sold Phillips, Chester, September 1997, lot 286.

11

A pewter tazza 'plate', lacking foot, circa 1690
Having a gadrooned narrow rim, engraved ownership initials *MB* to the flat well, touchmarks to rear of Robert Banckes III, Wigan, (w.1670-1692), 9½in. diameter
£100 - 150

12

A Jersey lidless pewter measure
Woolmer type b, half-pint capacity, crowned *GR* mark to collar, 11.5cm high
£100 - 120

13

A pint Irish haystack pewter measure
Bearing touchmark of Austen & Son, Cork, to the underside, verification marks to collar, 15cm high
£50 - 80

14

A 19th century barrel-shaped spouted pewter measure, circa 1830
With four plain fillets to body, double-curve handle with fishtail terminal, hallmarks to rim and touchmark in base of M Alderson & Co., London, (w.1821-1832), (PS 13873), crowned *WR* mark also to rim, 12cm high
£200 - 300



1



2



3



4



5



6



12



13



14



15

16



17



18

19

20

15
An early 18th century single-reed pewter charger
Hallmarks to rim and touchmark to rear of John Batcheler, Bristol, (w.1679-1708), (PS 39), ownership triad *HIS* also stamped to rim, 20in. diameter
£300 - 400

Possible that the maker's marks belong to John Batcheler's widow, Honor Batcheler, (w.1708-1727).

16
A Charles II broad-rim pewter dish, circa 1674
Hallmarks to rim and touchmark to rear of *AM*, (PS 6643), also dated 1674 below hallmarks, possibly the maker's marks of Anthony Matthews, Oxford, (w.1674-1706), (PS 6273), 16¾in. diameter, 3¼in. rim, (38.5%)
£500 - 800

17
A rare Charles II broad-rim exceptionally deep pewter dish or 'Cardinal's hat', circa 1670
Hallmarks to rim and touchmark to rear of George Smith, Derby, (w.1651-1698), (OP 4347, PS 96), having a plain rim, steep boogie and flat base, 14¼in. diameter, rim 2½in., (35%)
£600 - 800

18
A late 18th century Guernsey pint lidded pewter measure
The pear-shaped body with a pair of fillets, the heart-shaped lid bearing maker's mark and stamped initials *IF*, twin-acorn thumbpiece, single-curve handle with flush-terminal, 18.3cm high
£300 - 400

19
A late 18th/early 19th century Jersey quart lidded pewter measure, circa 1800
Having a plain pear-shaped body, heart-shaped lid with twin-acorn thumbrest, importer/dealer label of Nicholas Le Cheminant, (w.1780-1830), (PS 5828), to lid, 21.8cm high
£200 - 300



24



24 reverse

20

A West Country pint harvester pewter measure, circa 1800

Having a flared collar, S-shaped handle with thumbrest and ball terminal, touchmark under base of M. Fothergill & Sons, Bristol, (w.1793-1835), (OP 1740, PS 3468), verification marks to collar, 15.5cm high
£300 - 400

A similar example sold these rooms, *The Stanley Shemmell Collection*, 26 October 2006, lot 153

21

A group of plain rim pewter plates

To include an example by Richard Going II, Bristol, (w.1715-1764), (PS 32); together with a set of three and a pair, each bearing marks of Stynt Duncombe, Birmingham, 9in, 9½in. diameter; and an 18th century single reed charger, 18¼in. diameter, (7)
£80 - 120



22

23

22

A late 17th century triple-reed pewter dish, circa 1690

Hallmarks to rim of William Cookson IV, Penrith, Cumberland, (w.1666-1712), (PS 1916), also with ownership triad IBM to rim, 15in. diameter
£300 - 500

23

A Late 17th century triple-reed pewter dish, circa 1690

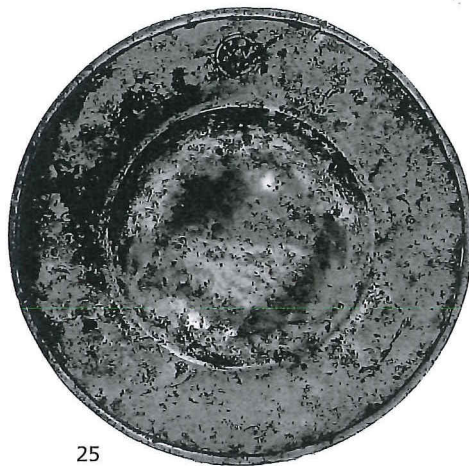
Hallmarks to rim and touchmark to rear of Robert Clothyer, Chard, Somerset, (w.1670-1704), (PS 1758, OP5523), 13½in. diameter
£300 - 500

24

A late 17th century large wriggle-work pewter beaker, decorated with portraits of William & Mary, Dutch, circa 1690

Of tapering form, with a band of scrolling flora above the two oval framed royal portraits and vine foliage, 17.4cm high
£800 - 1,200

A wriggle-work beaker with highly similar royal portraits sold Christie's *The Little Collection*, May 2007, lot 97.



25



26



27



28

25

A rare 16th century pewter saucer or spice plate
Having a single-reeded rim, gentle booge and shallow boss, maker's mark *R mermaid W* to rim and a possible *townmark* or *housemark* to rear of rim, traces of nature's gilding, $6\frac{1}{2}$ in. diameter
£600 - 800

Paper label to the rear reads *Excavated near Tower of London*

26

A Scottish mutchkin pewter tappit, circa 1800
The body of typical shouldered form, with erect thumbpiece and wriggle-work initials *TW* to the lid, plouk mark to the inside, 17.8cm high
£300 - 400

27

An early 19th century Jersey pint *conical* spouted pewter measure
With single-curve handle, 14.5cm high
£300 - 400

28

A Jersey half-pint lidded pewter measure, circa 1800
Having incised lines to pear-shaped body, heart-shaped lid with twin acorn thumbpiece, crowned *GR* mark to collar, possible touchmark to lid, (13.5cm high)
£200 - 300

Provenance: *Woolmer Collection*, (No.246).

29

A Victorian plain-rim pewter plate, circa 1859
With heraldic devices engraved to rim, also with the date 1859, maker's mark of Temple & Reynolds, London, (w.1836-1860), (PS 9296, OP 4692) to rear, $9\frac{3}{4}$ in. diameter
£50 - 80

30

An early 19th century gallon pewter ale jug
The filleted bulbous body with spout and perforated grating, overlap-type handle, crowned *G III* and crowned *VR* mark to the base underside, 24cm high
£400 - 600

A highly similar ale jug engraved *Capt F Marryat HMS. Ariadne*, sold in these rooms, *The Stanley Shemmell Collection*, 26 October 2006, lot 154, (£3,400).



30

31



37

31

An 18th century pint double-volute pewter baluster measure, circa 1740

With touchmark to collar of Thomas Stevens, London, (w.1716-1743, (PS8921, OP4513) plain body, handle with diamond strut attachment and hooded ball terminal, 15.4cm high
£300 - 500

32

A Charles II single-reed pewter dish, circa 1670

Hallmarks to rim of William White, London, (w.1661-1684), (OP5073, PS 9974), 12¼in. diameter
£300 - 500

A dish decorated with The Judgement of Solomon, attributed to William White, is in the collection of the Victoria & Albert Museum.

33

A mid-19th century spouted pint pewter measure

Having a mid-fillet to tapering drum, single-curve handle, touchmark to rim of Peter Llewellyn, Bristol, (w.1840-?), (PS 5910), stamped *J. WILMOT. OGBOURN St. Georges* to drum, 12.4cm high, together with a quart tulip-shaped spouted pewter measure, circa 1850, maker's mark of Robert Galbraith, Glasgow, (w.1828-1873), to rim, having a double-curve handle with small Scottish fish-tail terminal, height 18.5cm; a pewter pint mug with re-enforced rim; and another pewter pint mug with cancelled verification, stamped *CONDEMNED* several times to drum, (4)
£100 - 150

Wiltshire Parish Records record a James Wilmot, baptised in Ogbourne St. George, 1816.

34

A late 18th century dome-lidded pewter tankard, circa 1790

The straight-sided drum with single-fillet and engraved monogram, open chair-back thumbpiece, double-curve handle with fish-tail terminal, hallmarks to collar, possibly of Henry Joseph (PS 5290), however, with the addition of a touchmark inside base more likely to be that of Henry & Richard Joseph, (w.1785-1793), (PS5291, OP2687), capacity 38 fl.oz., 19.5cm high
£200 - 300

35

A 19th century dome-lidded pewter tankard, circa 1830

Having a single-fillet to the U-shaped body, an engraved boar heraldic device to dome-lid, open chair-back thumbpiece, double-curve handle with fish-tail terminal, hallmarks to rim of Susannah Cocks (w.1820-1847), (PS 1779), 20.5cm high, capacity 38 fl.oz., together with a spouted quart dome-lidded pewter tankard, with a plain U-shaped body, open chair-back thumbpiece and double-curve handle with fish-tail terminal, capacity 38 fl.oz., 19.5cm high, (2)
£200 - 300

36

A Charles II narrow-rim pewter plate, circa 1680

The rim with cast multiple reeding and hallmarks of George Smith, London/Derby, (w.1651-1698), (OP4334, PS96), traces of mark to rear, 8½in. diameter
£100 - 150

37

A Charles II narrow-rim wiggly-work decorated pewter plate, circa 1680

Hallmarks to rim and touchmarks to rear of William Haward, London, (w.1673-1688), (PS 4520, OP 2426), the well decorated with three birds and two ownership triads *WLB* and *HRA*, the rim inscribed *IN GOD IS ALL MY TRUST*, the date 1669 engraved to the well below the hallmark, 8½in. diameter
£1,000 - 1,500

Provenance: Mrs Gendoline Smith, Leicester, sold Sotheby's, London, 25 October 1971, lot 184.



42 (reverse)



43



44 (reverse)



45

38

A late 18th century single-reed and wriggle-work decorated pewter dish, German

The rim engraved *AHLERDT HERREN 1797* flanked by a meandering tulip design and centred by the maker's touchmark, 16 7/8in. diameter
£100 - 150

39

A group of mostly 19th century pewter mugs

To include brass-rimmed and spouted examples, footed cups, a quart glass-bottom domed-lidded tankard, a Chinese engraved pewter tea canister, (a qty)
£100 - 150

40

An early 19th century Dutch or Belgian pewter flagon

Of 'shouldered'-baluster form, domed-flat lid, erect thumbpiece, single-curve handle, crowned rose mark to the underside of base, 23cm high
£100 - 150

41

An early 19th century wriggle-work decorated pewter flask, German, dated

With eight-sides, each floral decorated, one centred by a heart engraved with the initials and date *KU 1808*, screw-lid and leaf-cast ring handle, 25cm high
£200 - 300

Lots 42 - 60: A Private Collection of Pewter and Latten spoons

42

A trifid-end pewter spoon, circa 1700

Touchmark and hallmarks of Edward Matthew, London, (w.1691-1732), (PS 6246, OP 3124), to rear of stem and trifid-end, also with ownership triad *IMM*, 19.7cm
£100 - 150

43

A trifid-end pewter spoon, circa 1690

Touchmark of maker *IN*, dated '78', (PS 6890), to bowl, ownership triad *ITE* to trifid-end, 18.5cm
£100 - 150

A trifid-end cast decorated spoon by the same maker, sold in these rooms, *The Kenneth Barkin Collection*, 14 May 2009, lot 654.

Literature: R.Homer, *Five Centuries of Base Metal Spoons*, p.56, (row 1, mark 8).

44

A cast decorated trifid-end pewter spoon, circa 1690

The trifid-end cast with a flower-spray to the front and with a stylized tulip and initials *IC* to the rear, the rear of bowl with *fleur-de-lys* and beaded decoration, nature's gilding, 19.5cm
£300 - 400

45

A trifid-end latten spoon, circa 1690

Worn maker's mark to bowl, 17.3cm
£100 - 150





46



47



48



49



50



51



52



53

46
A 17th century slip-top pewter spoon
The slip-top chamfered on upper-face, 18.5cm
£80 - 120

47
A 16th century slip-top latten spoon
Having a flattened-hexagonal stem, the fig-shaped bowl with *fleur-de-lys*
maker's mark, 15.8cm
£150 - 200

Literature: R.Homer, *Five Centuries of Base Metal Spoons*, p.54 (row 1, mark 1).



54



55



56



57

48

A late 17th century slip-top cast decorated pewter spoon, circa 1690

With an oval bowl cast to the reverse with three *rat-tails*, the stem cast with a flower-filled vase, above a bird and initials, the latter possibly *IM*, 17cm
£200 - 300

49

A 16th century ball seal-knop latten spoon, circa 1570

Flattened hexagonal stem, unidentified maker's mark to fig-shaped bowl, 15.5cm
£100 - 150

50

An English pewter 'Puritan' slip-top spoon, circa 1640

Makers mark of *TA*, (w.1625-?), (PS 1423, OP5398), and ownership triad *RSH*, to oval bowl, 17.5cm
£60 - 80

Literature: R.Homer, *Five Centuries of Base Metal Spoons*, p.56, (row 7, mark 5)

51

A 17th century strawberry-knopped latten spoon

Having a flat-stem with central groove and indistinct maker's mark to round bowl, 17cm
£200 - 300

Literature: R.Homer, *Five Centuries of Base Metal Spoons*, p.40. Similar example sold Christie's, *The Little Collection*, May 2007, lot 137.

52

A 17th century round-bowl pewter spoon, possibly Dutch

The flattened-stem with central wire-core and gently *splayed-end*, two crowned hammer marks to rear of stem, 16.7cm
£200 - 300

According to Brownsword & Homer, *Pewter Society Journal*, Vol. 6, No.5, pp.83-97, the crowned hammer mark is found on Dutch pewter as late as the 17th century. The flat-stem and the round bowl found here point to a 17th century date. However, the presence of an iron-core in the stem is often attributed to a 14/15th century date; see Christie's, *The Little Collection*, May 2007, lot 39, for a spoon of similar form attributed to the 14th century.

53

A pewter spoon, possibly 17th century, Low Countries

Having a round bowl and hexagonal flattened stem with *splayed-end* 16.2cm
£100 - 150

54

A late 15th century diamond-point or diamond-knop pewter spoon

Having a fig-shaped bowl and slender flattened-hexagonal stem, 14.2cm
£300 - 400

Literature: R.Homer, *Five Centuries of Base Metal Spoons*, p.31. Similar example illustrated exhibition catalogue, Museum of London, 1989, *Pewter, A Celebration of the Craft*, No.34f.

55

A 16th century slip-top latten spoon

Having a flattened-hexagonal stem, unidentified maker's mark to fig-shaped bowl, 16cm
£100 - 150



58



59



60 detail

60

56
A 17th century slip-top pewter spoon
The flattened-hexagonal stem with rounded end, maker's mark of ?K to fig-shaped bowl, together with a copy of P.Hornsby, *Pewter of the Western World 1600-1850*, (1983), 16.4cm, (2)
£100 - 150

Illustrated, P. Hornsby, *Pewter of the Western World*, p.181, pl.572.

57
A 16th/17th century pewter spoon, Dutch
Having a diamond cross-section stem and a rat-tail and crowned rose mark to the rear of bowl, 13.9cm
£100 - 150

58
An early 16th century iron and antler table knife, circa 1500 - 1550
The single-edged blade with rubbed cutler's mark of three stars within a circle, the handle with antler scales fixed by four rivets, with notched terminal, 21cm long, together with a table fork, of four tines, and with 'LONDON' stamp to reverse, 19.5cm long, (2)
£150 - 200

59
Two similar late 18th century cast decorated pewter spoons, circa 1780

Each with scroll and bead decoration to the rounded-end, one with maker's mark of John Fasson, London, (w.1758-1800), (PS 3268, OP1639); the other with maker's mark *IV*, (w.1780-?), (PS 11739), 20.3cm, (2)
£50 - 80

60
An exceptionally rare Edward I dragon-knop latten spoon, circa 1280
Having a pointed-rounded bowl, fleur-de-lys maker's mark to flattened hexagonal stem which is cut square at the end and formed into a stylized dragon, (17cm)
£600 - 800

Literature: R.Homer, *Five Centuries of Base Metal Spoons*, p.18, illustrates a highly similar dragon-knop detail, found on a round-bowl latten spoon, dated c.1250-1300. The author refers to two examples in the Victoria & Albert Museum Collection.