



# TACOM LCMC COMMAND OVERVIEW

## 2014 Tactical Wheeled Vehicle Conference

**Brian Butler**  
Executive Director, Integrated  
Logistics Support Center  
TACOM LCMC



# Thank

# You!!

For Helping Us Support Every Soldier...Every Day





# MISSION / VISION



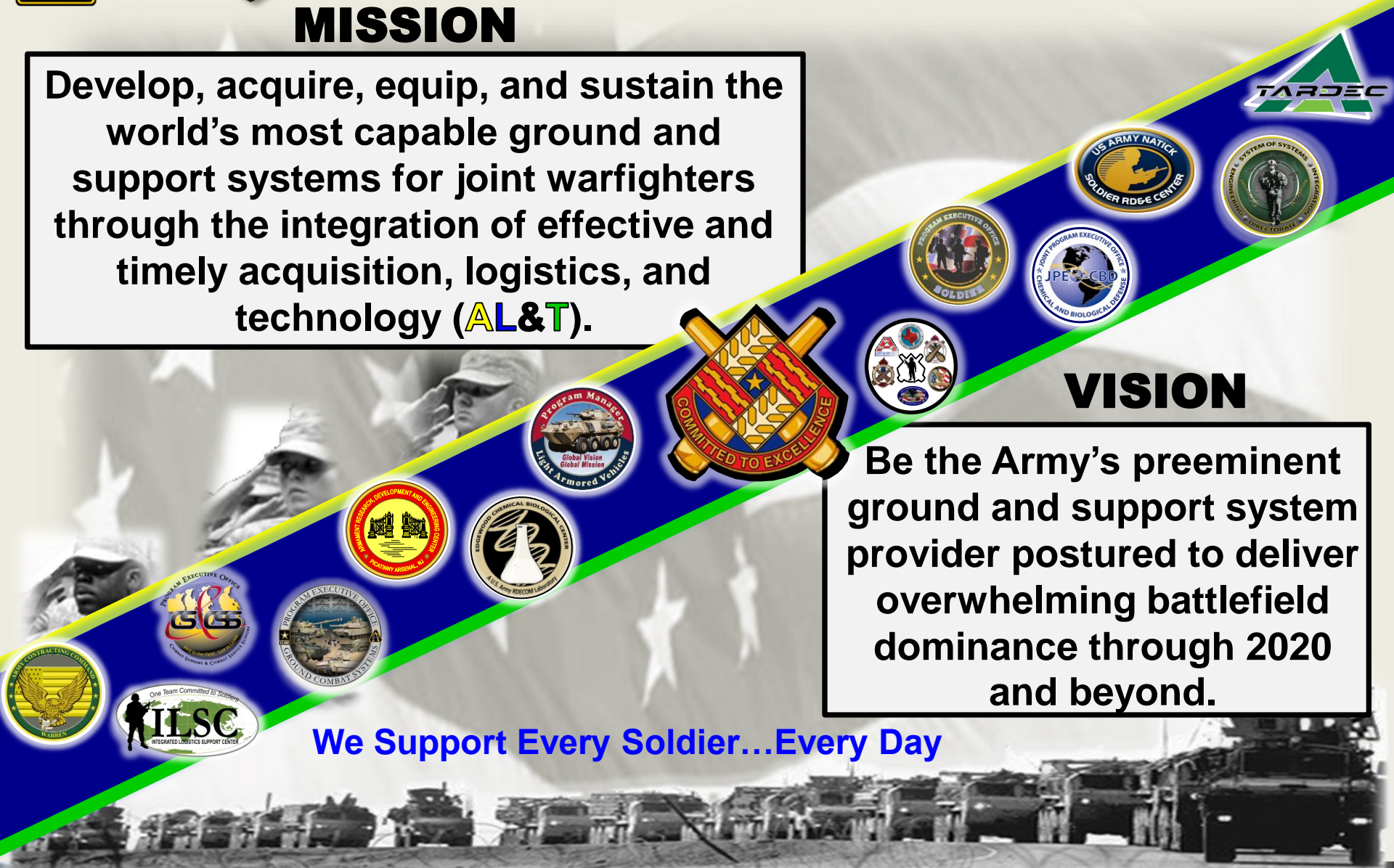
## MISSION

Develop, acquire, equip, and sustain the world's most capable ground and support systems for joint warfighters through the integration of effective and timely acquisition, logistics, and technology (AL&T).

## VISION

Be the Army's preeminent ground and support system provider postured to deliver overwhelming battlefield dominance through 2020 and beyond.

We Support Every Soldier...Every Day





# OUR PRIORITIES



***Support to the Soldier***



***Strengthen the LCMC***



***Transform***



***Strategic Partnerships***





# EQUIPPING THE SOLDIER



## Core Competencies

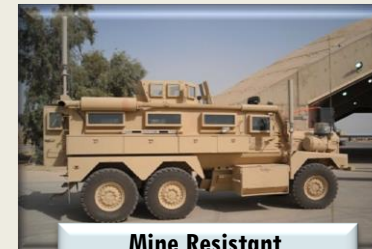
- **A**cquisition: Program Management
- **L**ogistics: Sustainment, National Inventory Management, Maintenance Management & Industrial Base Operations
- **T**echnology: Research, Development & Life Cycle Engineering

## The Magnitude

- Managing approximately 60% of the equipment in a Brigade Combat Team
- Managing approximately 3,200 Fielded Product Lines & 38,000 Components
- Over 130 Allied Countries use our Equipment (FMS)

## TACOM LCMC Product Lines (not all inclusive)

- Combat Vehicles
- Tactical Vehicles
- Mine Resistant Ambush Protected (MRAP)
- Armored Security Vehicle
- Route Clearing Vehicle
- Howitzers
- Rifles / Machine Guns
- Large Caliber Guns
- Mortars
- Rapid Fielding Initiative (RFI)
- Robotics
- Aircraft Armaments
- Soldier Uniforms & Equipment
- Force Providers
- Materiel Handling Equipment
- Chemical Defense Equipment
- Tactical Bridges
- Fuel & Water Distribution Equipment



Mine Resistant  
Ambush Protected (MRAP)



Bradley Fighting  
Vehicle



Watercraft



M1A2 SEP

Soldier Uniforms  
and Equipment



- Trailers
- Watercraft
- Rail
- Construction Equipment
- Commercial Vehicles
- Fuel & Lubricant Containers
- Sets, Kits & Outfits
- Shop Equipment



# WHERE WE ARE



# TACOM LCMC





# BOARD OF DIRECTORS



ACQ LOG TECH



**PEO Soldier**  
**BG Ostrowski**



**PEO CS&CSS**  
**Mr. Davis**




**PEO GCS**  
**BG Bassett**



**ILSC**  
**Mr. Butler**



**JPEO CBD**  
**Mr. Spencer**



**ACC-Wrn**  
**Mr. Bousquet**  
**(Acting)**



**Commander,**  
**MG Terry**



**Deputy to the**  
**Commander,**  
**Mr. Viggato**



**SoSE&I**  
**Mr. Edwards**



**ARDEC**  
**Dr. Melendez**



**TARDEC**  
**Dr. Rogers**



**NSRDEC**  
**Dr. Allender**  
**(Acting)**



**ECBC**  
**Mr. Wienand**

## Support Advisors



**Command Sergeant Major**  
**CSM Schmitt**



**Chief of Staff**  
**COL Shun**



**Command Counsel**  
**Mr. Kuhn (Acting)**



**PM LAV**  
**Col Brinkman**



**Garrison Mgr.**  
**Mr. Parks**



**Network Enterprise Center**  
**Ms. Danielski**



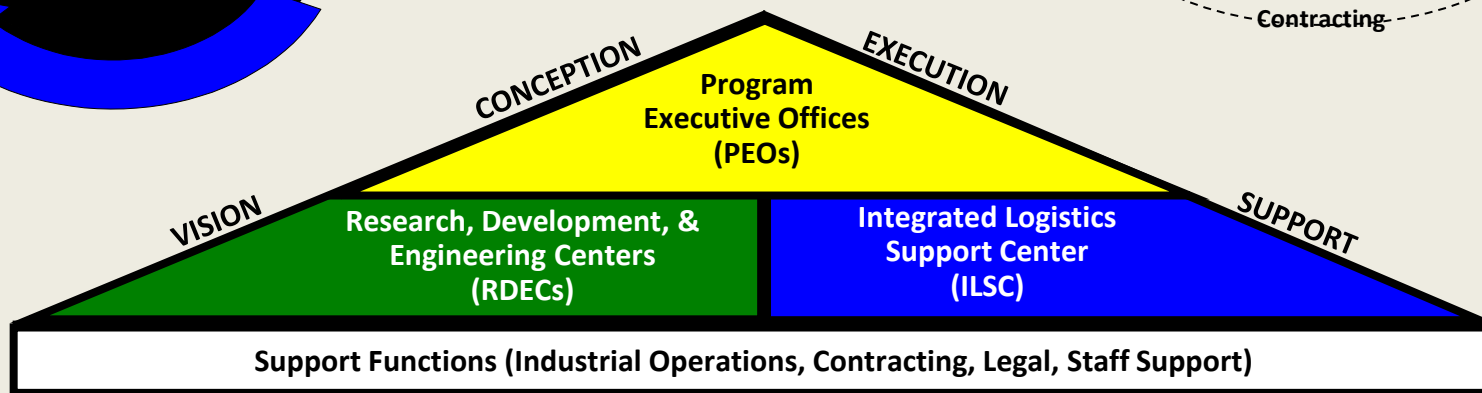
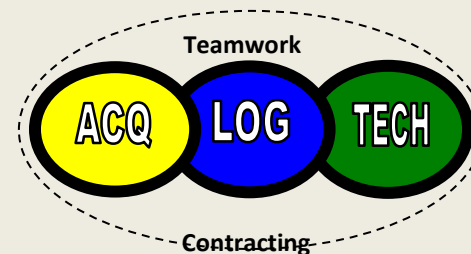
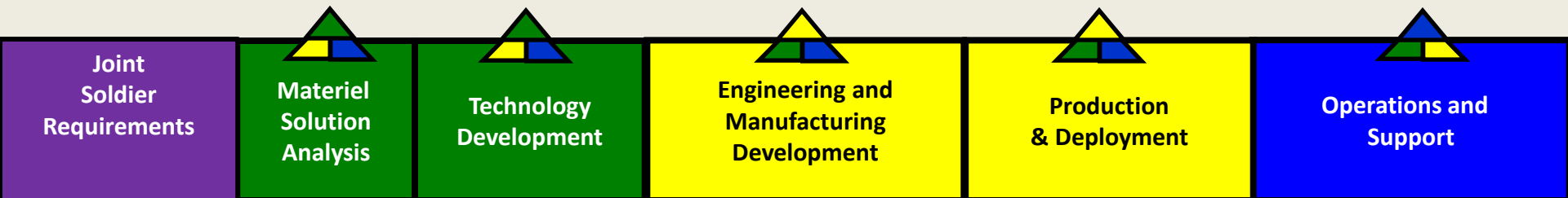
**CPAC**  
**Mr. Tom**

The TACOM LCMC Board of Directors develops, executes, and promotes an integrated environment across the Acquisition, Logistics, and Technology communities within the TACOM LCMC.





# SYSTEM LIFE CYCLE INTEGRATION



**Our objective is to get products to the Soldier faster, make our good products even better, minimize life cycle costs, and enhance the effectiveness and integration of our acquisition, logistics, and technology communities.**



# ASA(ALT) ORGANIZATIONS

**Acquisition**



**PEO Combat Support & Combat Service Support (CS&CSS)**  
Warren, MI

- Joint Program Office – Joint Light Tactical Vehicles**
- Force Projection**
- Transportation Systems**
- Mine Resistant Ambush Protected**
- Mobile Electric Power**



**PEO Ground Combat Systems (GCS)**  
Warren, MI

- Stryker Brigade Combat Team**
- Armored Brigade Combat Team**
- Ground Combat Vehicle**
- Joint Robotic Systems**



**PEO Soldier**  
Ft. Belvoir, VA

- Soldier Weapons**
- Soldier Warrior**
- Soldier Sensors and Lasers**
- Soldier Protection and Individual Equipment**



**Joint PEO for Chemical & Biological Defense (JPEO CBD)**  
Falls Church, VA

- Biological Defense**
- Contamination Avoidance**
- Chem Bio Medical Systems**
- Medical Countermeasures**
- Transformational Medical Technologies**
- Guardian**
- Information Systems**
- Protection**



**System of Systems Engineering & Integration (SoSE&I)**  
Wash D.C.

- System of Systems Engineering**
- Systems of Systems Integration**
- ASA(ALT) CIO**



The primary responsibility of the PEO and its project / product managers (PMs) is the life cycle management of their assigned systems and programs – from cradle to grave.



# INTEGRATED LOGISTICS SUPPORT CENTER



## Logistics



### Readiness & Sustainment (R&S) Directorates

- Ground Combat Support
- Combat Spt & Combat Service Spt
  - Soldier and Chem / Bio

### Field Support Operations

### Logistics Integration

### Business Management Directorate

### Industrial Base Operations

Providing life cycle logistics support and weapon systems management to our active Army, National Guard, Reserves, and Joint Services.

### Product Support Integration Directorates (PSIDs)

#### Ground Combat Support

- Field Artillery & Support
- Combat Maneuver & Recover

#### Combat Spt & Combat Service Spt

- Mine Resistant Vehicles
  - Tactical Vehicle
- Deployment Equipment

#### Soldier and Chem / Bio

- Weapons
- Chemical / Biological Defense
- Clothing & Heraldry ■ Soldier

PSIDs are directly aligned to TACOM LCMC PMs – providing sustainment support for all TACOM LCMC systems.



# DEPOTS AND ARSENALS

Logistics



## Anniston Army Depot (ANAD)

- Overhauls & repairs heavy & light combat vehicles
- M1A1, M88, AGT 1500 Turbine Engine, Small Arms



## Red River Army Depot (RRAD)

- Overhauls & repairs combat & tactical vehicles
- Bradley, MLRS, MRAPs, HMMWV, HEMTT, PLS
- FMTV, HET, Trailers, Bridge Boat, Cranes, Forklift
- Rubber Products (Track & Road-wheels), FSS



## Sierra Army Depot (SIAD)

- New build and Reset of Water & Fuel Systems
- Retrograde & Redistribution
- Army's End of First Life Cycle Initiative



## Joint Manufacturing Technology Center Rock Island Arsenal (JMTC RIA)

- Vertically Integrated Metal Manufacturing
- Designated CITE for Add-on-Armor, Mobile Maintenance Systems and Foundry Operations



## Joint Manufacturing Technology Center Watervliet Arsenal (JMTC WVA)

- America's sole manufacturing facility for thin and thick wall cannons (private and public)
- Manufacturing expertise from prototype through low rate initial production into full rate production



## Joint Systems Manufacturing Center JSMC Lima

- Production facility for the M1 Abrams
- Manufacturing, repairing, refurbishing, & testing of armored combat vehicles

Our industrial base operations leverage the combined capacity of the six organic industrial installations. Combined capabilities include manufacturing, plant engineering services, field support, storage, repair, and overhaul.



# RESEARCH, DEVELOPMENT & ENGINEERING



## Technology



### Tank-Automotive Research, Development and Engineering Center (TARDEC) Warren, MI

- Sustainment & Platform Integration
- Systems Engineering & Integration
- Survivability
- Power & Mobility
- Robotics
- Vehicle Electronics Architectures (VEA)
- Force Projection Technologies



### Armament Research, Development and Engineering Center (ARDEC) Picatinny, NJ

- Advanced Weapons Systems
- Advanced Energetics & Warheads
- Munitions Systems & Technologies
- Fire Control
- Ammunition Logistics
- Advanced Materials/Nanotechnologies



### Natick Soldier Research, Development and Engineering Center (NSRDEC) Natick, MA

- Clothing & Protective Equipment
- Airdrop/Aerial Delivery
- Human Systems Integration Sciences
- Contingency Basing
- DOD Combat Feeding
- Soldier Small Combat Unit Technology Demonstration



### Edgewood Chemical Biological Center (ECBC) Aberdeen Proving Ground, MD

- CB Sciences
- S&T for Emerging Threats
- CB Agent Handling and Surety
- CBRNE Materiel Acquisition
- CBRNE Analysis and Testing
- CBRNE Munitions Field Operations



The RDECs' primary responsibility is to work with LCMC and other stakeholders to maintain a strong advanced science / technology base to support warfighter needs by providing innovative capabilities and full service life cycle engineering and integration support to the acquisition community - from cradle to grave.



# ARMY CONTRACTING COMMAND-WARREN



## PROVIDING CONTRACT SUPPORT FOR:

- Combat Vehicles and Combat Vehicle Armaments
- Tactical Vehicles / Trailers
- Combat Engineering/Material Handling Systems
- Bridging Systems
- Fuel and Water Distribution Systems
- Watercraft
- Mine Resistant Ambush Protected (MRAP)
- Advanced Science and Technology Programs
- Training Devices
- Chemical and Biological Defense
- Small Arms
- Aircraft Armaments
- Mortars
- Recovery Vehicles
- Fire Control Systems
- Howitzers (105–155mm)
- Route Clearance Vehicles
- Sets, Kits, Outfits, and Tools
- Robotic Systems
- Installation Support



**ACC-Warren is responsible for all contracting functions throughout the entire life cycle. This includes acquisition planning, contract execution, and contract management.**



# RESHAPE EFFORTS

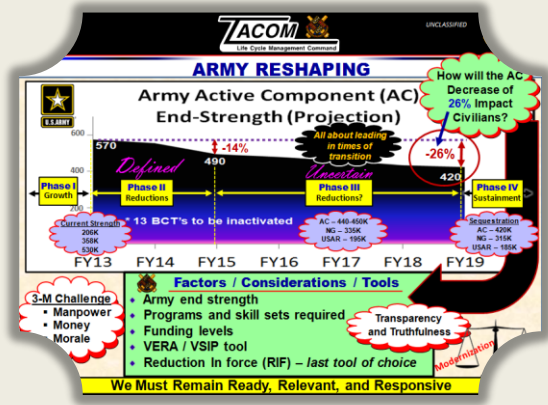


Past

## Phase I Growth

Present

## Phase II Reductions



- Reductions in resources to include inactivation of BCTs and drawdown of funding and manpower.
- End strength (490K military AC, 350K National Guard, 205K U.S. Army Reserves, 17K civilian reduction)
- TACOM will see decreased numbers.



Future

## Phase III - Reductions?

Future

## Phase IV Sustainment

- Drawdown from 490K to an unspecified end strength AC number: could be 440K or 450K, NG 335K, USAAR 195K
- There will be a corresponding civilian reduction.
- There will be a corresponding TACOM reduction.
- Challenges remain: manpower, money, and morale. We must remain ready, relevant, and responsive.

- Sustain the force: level off of resources.
- Reset, re-posture for future requirements to remain ready, relevant, and responsive.



## Reshape tools

### Getting from Phase 2 to Phase 4

- Attrition** – Slowing trend, not viable as a stand-alone option
- VERA/VSIP** – Received several hundred VSIPs from HQ AMC for TACOM teammates. Can be used to posture the Command for the future while keeping needed skill sets - not an entitlement, but provides the most flexibility.



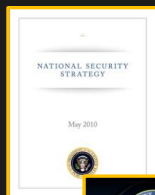
# CHALLENGES



- Workload and Workforce Requirements
  - Skill sets and attrition
- Funding Realities
  - Personnel and resource requirements



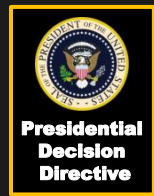
## Defense Strategy



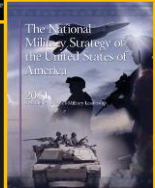
**National Security Strategy**



**National Defense Strategy**



**Presidential Decision Directive**



**National Military Strategy**



**Political Impacts**



**FY15-19**



**2025 and Beyond**



**We continue to move forward in a world of global uncertainty.**





U.S. ARMY



# WHY WE DO WHAT WE DO



*Committed to Excellence*



*“By harnessing the power of collaboration, we enhance our working relationships and are better prepared to provide the best possible support to our Soldiers.”*