

C.S.

SECRET.

WAR/W2H/4#19

1940

No. 5/44/40

S. of S. for War.

SUBJECT.

19<sup>40</sup>  
7th June.

DEFENCE ELECTRIC LIGHTS FOR ILLUMINATION  
OF ENTRANCE TO PORT WILLIAM.

Previous Paper.

MINUTES.

1. was office telegram of 7 June, 1940.
  2. telegram to was office of 17 June, 1940
  3. was office telegram of 11 August, 1940
- O.C.D.F.  
6.7.40 *[Signature]* 16/VIII/40

Honourable Colonial Secretary.

If as I assume W.D. want to know distance between house containing motor & side of Searchlight it is approximately 100 yds. The engine will be installed in an existing outhouse & the Searchlight on the edge of "cliff".

May W.D. be told this please & everything done to expedite dispatch as the lack of some such light is the Achilles heel of the Defences.

*[Signature]* O.C.D.F. 17. VIII. 40.

O.C.D.F.

Please see ① & draft telegram.

*[Signature]* 19/VIII/40

er.

*[Stamp]*

yft.

May attached telegram be despatched please..

4.

C. J. J.  
for S.  
20/8/40

~~ttttt~~ 21/8

Telegram to Under S. of S. for war 20/8/40

O. C. Defence Force.

Passed to you for necessary action please.

C. J. J.  
for S.  
30/8/40

Honorable Colonel Secretary.

Draft telegram submitted please. I have named the handbooks mentioned in para. 2. CW of S. 5. 11. 40

(6)

yft.

May attached draft telegram be despatched please from S. A.

C. J. J.  
for S.  
5/9/40

Sent ~~ttttt~~ 5/9

Telegram to Under S. of S. for war, 5/9/40. 13.  
" from " " " 10/9/40 14

O. C. Defence Force.

Referred to you.

C. J. J.  
for S.  
10/9/40

Honorable Colonial Secretary.

The size of E.R. mentioned here mean either enlarging the sheet that one had in mind for the purpose or building new. May W.O. be thanked for offer of assistance but told this is not required please see (14). O.W. O.C. D.F. 13.11.40.

J/E. May attached telegram be despatched please.

C. J. J.  
C. J. J.  
12/9/40.

- 15. Telegram to Under S.O. for War, 14/9/40.
- 16. " from " " " 20/10/40.

O.C.D.F.

no note.

C. J. J.  
C. J. J.  
23/10/40.

Honorable Colonial Secretary. Note Thank you. O.W. 24.11.40 O.C.D.F.

J/E. May attached draft telegram be despatched please in "I.D.V"

C. J. J.  
C. J. J.  
24/12/40

Will 25/12

- 17. Letter from War Office of 7. 9. 40.
- 18-19. Telegram to Under S.O. for War of 24.12. 40.
- 20. " from " " " 25.12. 40.

O.C.D.F.,

No note.

C.I.P. Ad.  
30/12/40.

Honorable Colonial Secretary.

It is submitted that nos (19) & (20) arrived in transit. On this assumption (20) is not understood as three cases containing sets marked HEC/219/1 have already been received & are referred to in no (16). Submitted that W.O. be informed accordingly & be continue to wait for reply to (19).

C.W. O.C.D.F. 30.12.40.

P.O.

Telegram from Under Secy for War of 17/1/41 21.

E.E.

No note Ad (2)

Honorable Colonial Secretary.

None. Thank you.

C.I.P. Ad.  
21/1/41

C.W. O.C.D.F.  
21.1.41.

E.E.

H.E. would like to discuss this with you and also particulars of expenditure to date.

C.I.P. Ad.  
18/3/41

E.E.

Ads. W. herewith - I gather that in 1940 you had an Ads. W. for £750 of which you spent £47 & that this present Ads. W. for £700 is a re-issue.

C.I.P. Ad.  
11/3/41

Miss Deighton

See above Thank you. H.E. minute is correct.

C.W. O.C.D.F.  
12.11.41

C/O Secretariat.

Who is paying for this? I think we had better inform S. & S. i. ph. submit draft 1st. explaining situation in detail especially at whose request these were sent.

ALB 11/21/41

Y/E.

Draft telegram submitted.

- 2. there is no correspondence in this office to show who made the request for these searchlights but it is presumed that Rear Admiral Harwood took the matter up with the War office.
- 3. At a Defence Committee meeting held on the 13 of March, 1940, at which Rear Admiral Harwood and his staff were present the following recommendation was made:  
"that the Admiralty should be approached with a view to the supply of a search light for use in Port Williams".
- 4. Nothing more was heard about the matter until the receipt of Red D herein.

J.F.  
C. for C.  
12/3/41

In view of a telegram received yesterday a despatch rather than a telegram. with lan to do.

ALB 12/3/41

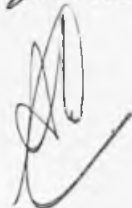
Y/E. With draft despatch for approval.

C.L.D.  
for 22/3/41

Memorandum from O.C. Defence Force, 22/3/41. 22-23.

Y/E. Reas 22-23 submitted as requested.

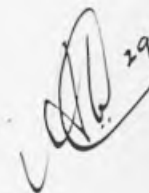
C.L.D.  
for 22/3/41



Y/E. Reas 24-25 submitted.

24-25.

May Rea (22) be signed and returned please and should draft despatch now be cancelled?

Y/E.  29/3/41

C.L.D.  
for 28/3/41

O.C. Troops

Yes - as you suggest.

 29/3/41

Y/E. Note - Thanks you.

C.L.D.

O.C.T. 29.3.41.

A copy of report on moving of DEL position from Pembroke was submitted for perusal to N.O.I.C. on 2.4.41 C.L.D.

Y/E. Letter from War office, 1/2/41 26.

Rea 26 submitted for signature.

C.L.D.  
for 3/5/41

- 27-30. Letter from War Office of 8/1/41.
- 31. \_\_\_\_\_ " \_\_\_\_\_ 27/1/41.
- 32. \_\_\_\_\_ " \_\_\_\_\_ 4/2/41.
- 33-34. \_\_\_\_\_ " \_\_\_\_\_ 6/2/41.

- 35-36 List of Searchlight stores received.
- 37 List of Searchlight stores short received.

38. Telegram to Under S. of S. for War of 24/9/41

39. Telegram 97107 from Under S. of S. for War of 22/10/41

O.C. Troops

to see.

C. J. J. 30/10/41

Hon Col Sec

Notes (Thank you)

C. J. J. Col.

O.C. Troops

30/10/41

40-45

Proceedings of a Court of Enquiry held on Oct 27<sup>th</sup> 1941 and convened by O.C. Troops to enquire into the condition of certain High Voltage light stores

Y/E.

Submitted. O.C. Troops has asked whether the draft telegram could be despatched?

C. J. J. 31/10/41

Please cut down. There is no need to go into details. Presumably Court of Enquiry which could not function in the absence of all evidence means Board of Enquiry. Why not state: "... recd., badly damaged pt. replace"

31/10/41

Telegram redrafted and submitted.

C. J. [unclear]  
for 11/11/41.

Telegram to Under S. of S. for War of 3/11/41. 46.  
Notes - C. J. [unclear]

Telegram No 50250. 6/11 from Troopers of 6/11/41. 47.  
yft.  
Submitted with draft telegram to Under S. of S for War.

C. J. [unclear]  
for 7/11/41.

Telegram to Under Secretary of State for War of 7/11/41. 48.

Telegram from Under S. of S. for War of 3/12/41. 49.

Telegram to Under S. of S. for War of 6/12/41. 50.

Telegram No. 138 from S. of S. of 28. 12. 41. 51.

oops.  
to note.

Hon Col Sec  
Notes Thank you  
C. J. [unclear]  
30. 12. 41

C. J. [unclear]  
for 30/12/41

yft. May draft telegram be despatched please.

C. J. [unclear]  
for 30/12/41.

Telegram No. 159 to S. of S. of 31/12/41. 52

Telegram No. 11 from S. of S. of 19/1/42. 53.

oc. works.  
to note. C. J. [unclear]  
for 21/1/42

Hon Col Sec  
Notes. Thank you  
21.1.42 C. J. [unclear] & Troops



54. Telegram from Under S. of S. for War of 6/2/42.  
cc. Troops.

to note

A. J. Ford  
7/2/42.

Hon Col Sec

Noted: Thank you

C. J. P. L  
10.2.42. Col Troops

55. Copy of letter to Supt. E. & J. of 23.2.42.

56. Memo from C/C, Troops of 23.2.42.

57. Telegram No. 35 to S of S. of 25/2/42.

58. Minute from Q. Master to O/c F. Is. Defence Force of 23/6/42.

59

ME

(58) These 2 generators are at Charles Point & Andrew Point respectively. EE had them in mind as possibilities for electricity for Bay, which is discussed at (87A) in 11/9/42. JE is not inclined to pursue this scheme, but I think shd. see before we go further. He shd. need to have some spec.

2. If we drop that idea, EE has had an enquiry for them but nothing concrete.

3. I am talking to with the Arts. Ch. Consider the question of financing.

4. ? as at (58).

MC 24/vi

A. J. Ford  
24.6

K.I.V. for Central School?

O.C. F.I.D.F. (58)

Re. vice of draft - S/T with  
details & references?

W.S.  
24.6

(61)

Honorable Colonel Semlany.

Before drafting an S/T there are ~~some~~  
~~two~~ points of policy I would like settled.

2 If we enquire of W.O. whether we may  
dispose of the engines ~~as they agree~~ <sup>if they agree</sup> Good.  
(if they want one or both) will be faced with the  
purchase of the engines at a big figure.

3 If we tell W.O. that we are removing them  
to Stanley as they are difficult to maintain & deteriorating  
& would be <sup>more</sup> usefully employed in Stanley, we infer  
they are <sup>this</sup> Government's property & we are only telling  
W.O. as a matter of courtesy & to enable them to keep  
their defence records up to date.

4 Would you say whether draft should follow  
lines of para. 2 or para. 3. above. The engines  
are of no value to the W.O. really but will become  
very valuable in their eyes if they think we want  
them.

W.S. Oct 10/47  
25. VI. 47.

HE

62

61

in skd. merely explain as at § 2 of (58).  
 add the point about difficulty of main.  
 finance: a long enquiry whether W.O. is  
 prepared to dispose of them for what is an  
 set locally?

2. F.I. like § 3 of 61 but the enquiry as  
 to Govt. property in skd. looks extremely  
 foolish if we used them for another purpose  
 sh. bricks here are for the purpose of  
 sh. they are intended: nor would it  
 enable the W.O. to keep their records  
 very precisely!

CBE  
 25/6

63

Agree. MC 26/vi

OC, F.I. DE

(64)

the the

CBE  
 29/6  
 (65)

Innumerable Colonial Secretaries.

Draft attd. pe. W.S. O.C.P. 109  
 28. VI. 47

66. Saving Telegram No. 34 to P. of P. of 27. 6. 47

27. S  
 CBE  
 27

old

JB

27. 47.

RE-5X 41

Q1828 199

Telegram No. 517 to Secretary of State of 15. 9. 47

67.

Telegram No. 340 from Secretary of State of 19. 9. 47.

68.

69

7E. <sup>(68)</sup>  
 Don't know for certain. pl.  
 ✓ MC. 23/1x  
 C. B. L.  
 22/9

Telegram No. 546 to Secretary of State of 23. 9. 47

71.

Unrec. tel. from S. of S. of 29. 9. 47. 72.

73

7E.  
 (72) with (71) he may need both  
 (if the Widdup is not available) - shd.  
 reply that 'both' are intended?

C. B. L.  
 30/9

Yes - reply 'both'.  
 MC. 30/1x

Telegram no 562 to S. of S. of 1/10/47. 75

76

Charonia W/T 'Chu.

This refers to requirements for  
 Naval W/T Station. Please vice for as  
 certain them. such H.E.'s instructions as  
 to whether or shd. press for early reply to  
 (71) bearing regard to immunities of Navy  
 learning?  
 C. B. L.  
 15.x

Be  
 14. 10  
 C. B. L.  
 1x

Y.E. I discussed this with Capt. E. & T. and recommend asking for early reply to (71).  
 In this connection, if these generators are obtained it would not be necessary for Admiralty loan of Widdop generator mentioned in para 3 of our Tel 527 to S/S. (65 in 170/46) and provided the 20 k.w. Alternator mentioned in para 5 of Tel 527 is obtained, station would have adequate power supply to operate & be independent of main supply.

CRW/G. 17/10.

78

Discussed: issue telegram within.

Mc. 17/X

7879 Telegram No. 607 to S/S of 17. 10. 47.

80. Telegram No. 401 from Secretary of State of 2. 11. 47.

Y.E.

(80) Then in regard the alternator refers to (78) - at S/S of (65) in 170/46.

Submitted separately

CRW

3.11 In confirm

Reply from 80. Grateful that action in para 3 of my 78 is being taken.

Mc 3/11

Tel. No. 652 to S. of S. of 4. 11. 47 83  
" " 411 from " " " of 10. 11. 47 84

Bo  
15.11.47  
C. S. B.  
7/11

85

(78) (31) (83) R's was referred to  
in another letter a few days ago?

HCS

86.

ABH  
19.11

Pl. see extract on p. 15 in 0492/A (attached)

JPH  
20. 11. 47.

87

SEI

(85)

bi

ABH  
21.11

88

How C.S.

(80)

see thank you.

AM

SEI  
24. 11. 47

ABH  
24.11

Despatch No 66 from S. of S. of 31. 10. 47. 89

ABH  
24.11

ABH

91

48

(90)

These generators are on loan to us under  
 (89) - to which there has been no follow up.  
 2) Suggest we advise that we have  
 no further use for them & recommend  
 sale locally.

91

2i

Yes - I was confusing them with the  
 two we bought from Air Ministry (now  
 at South Georgia).

MC 22<sup>000</sup> VM

92 Tel. No 155 to Secretary of State of 24/8/53

93

SLT

J. i. p.

24/8

How CS

94

noted. Thank you

ALL SP  
25. 8. 53

JBS

95

Bu. 17/9/53  
248

96

92 - reminder?

What the on 24/9.

24/9

17/9

Mr. Hirstle

97

24/9

If nothing in main pl. despatch  
 att. telegram.

97a

24/9

ACS. No reply has been received yet.

98

Tel. No 175 to S. of S. of 25/9/53

Bu 30/9

Bu. 7.x.

99

Telegram from S of S. of 6/10/53.

No 134.

100

S.P.T.

As at Bow 99 pt.

Wt for Lib.  
7/x

Am Cal Sec

101

noted, thank you.

Particulars of equipment as follows.

- 1 20 KW. Dorman Diesel 4 cylinder engine direct coupled to a 3 phase 230 volt 50 cycle 4 wire alternator, complete with fuel tank, water tank and switchboard. Suitable for lighting at 230 or 110 volts.
- 1 Dorman Diesel 4 cylinder engine direct coupled to a 100 volt 22 KW direct current dynamo. Complete with fuel tank and switchboard.
- 2 Spare ~~220~~ 100 volt 22 KW dynamos.  
a quantity of engine spares.

All st  
9. 10. 53

102

Offia

p.a. arrange Kansas notice but first ask S.P.T.

- (a) when type of flipping the second engine is designed for
- (b) if both are in perfect running order

10/10.



103.

A.C.S.

Your 102, pl.

(a) Direct current

(b) Yes.

2. Draft herewith, pl.

WJ  
10.10.53

104

Public Notice

EV 3/10/53

105.

A.C.S.  
no tenders 10.20 am.

WJ 31/X

S.P.

106

1. See.  
2. Shall we extend for a fortnight?

Q  
31/X.

Am C.S. 107

Yes please.

AM S.P.  
4/11/53

Office

108

Arrange any.

Q

109

A.C.S.

Extended to 14/11/53 - & to be rebroadcast.

WJ BU 14/X1

110

ACS

Still no tender

WJ  
14/11/53

HCS

111

104 - 110 - request no tanks

16/11

ACP

112  
Please ascertain definitely from

SPT  
FAS

S/O

Let Govt know we have no conceivable use for these engines here or S. Georgia then we can advise War Office.

18/11

SPT  
H/SF  
S/W

113

As at 112 re.

18/11

From Col Sec.

114

I cannot see what use either engine will be at S.G. but to be sure, I have asked A.O. by service message.

AMK SPT  
18.11.53

HCS

115

F.A.S. has no use for these engines.

19/11

HCS

They are no use to P.W.D

28/11/53

(recd. 3/12/53)

SPT

117

114 - have you heard from A.O.?

118

3/12

From C.S.

A.O. replied saying "Dorman plants of no use at S.G. Have spoken to NE, we require 75 KW plant"

AMK SPT  
4/12/53

119 Feb 20 S. of S. of 17/12/53

Bu. 15/1/54

120

Jes

119 awaits a reply.

There is ~~possibly~~ no urgency about this & we may leave the base in this case?

Q  
n.2.  
Bu. 20/1/54  
(mail)

No mail

Bu. 12/2  
(mail)

No v.p. } 15/2/54  
No mail  
John

Q  
15/2. 121

Asl. When are they housed & are they inconveniently sited?

Q  
16/2

S.P.T.

122

121 ?

Q  
16/2 123

How 25

Mechines are housed in No 3 Messin Hut in Ross Road East.

They are not in an way but the hut is in very bad condition and machines must be damaged by moisture & rats.

RM. S.P.T.  
16.2.54

124

Bu. 1 month  
Q  
Bu. 18/3/54 HCS

A.C.S.

Talking to S.P.T. & S.W. recently they now consider that these engines might be useful as auxiliaries for the compressor we are purchasing for Azon Bay.

Pre ask Geo. to confirm & also state exact use to which they will be put & what we should offer for them.

Q  
W/B

125.

S/S.

124 ?

Q  
22/3

HCB

126

These engines are the same make as the compressors we have purchased from Ajax Bay.

As there were no offers for them forthcoming from the General Public I suggest we offer £50 for them and if the compressor fails at any time we shall have the spares here.

AJL  
22/3/54

127

S/W.

(126.) is the intention that they be used to provide spares for the compressors?

If so, do you know whether the engines are identical in the fact they are by the same maker does not answer this:

AJL  
28/3

128

HCB

It is the intention to use these engines for spares for the compressors.

Engines are identical

AJL  
31/3/54

129 Telegram No 73 from S/S of 6/4/54

130 Saving Telegram No. 67 to S. of S of 9. 4. 54

KIV 128

Re. 30/6/54  
S.

131 Telegram No 104 from S/S. of 27.5.54.

132 AG Pse advise S.S. & arrange for payment to be made.  
28/5

133.

See 134 S.S. informed by note which he is returning for file.

P. ask C.A.A. to pay.

28/5

134

Hel noted by AG 28/5/54.

135

number  
→ 133.

28/5

136 Letter to Crown Agents of 31/5/54.

AG see 136  
PAH  
2/6

DECODE.

TELEGRAM.

No.66. From War Office, London, .....

To His Excellency the Governor, Falkland Islands.

---

Despatched: 7th June 19 40 Time: 12.05.

Received: 19 Time: *Time*

In order to arrange installation your 2 D E L S lately agreed  
cable map co-ordinates their situation and engine room and  
E L D S. State distances between engine room and each emplace-  
ment standing. Engine room and E D S. E L D S and each  
equilibrium.

I.D. "V".7.

DECODE.

2

TELEGRAM. SENT.

*From* His Excellency the Governor, Falkland Islands,

*To* War Office, London.

---

*Despatched :* 17th June 19 40 *Time :*

*Received :* 19 *Time :*

From the Governor of the Falkland Islands your telegram dated June 7th unintelligible.

G.T.C.

No 190.

DECODE.

TELEGRAM.

From UNDER SECRETARY OF STATE FOR WAR

To H.E. the GOVERNOR OF BALKALND ISLANDS

Despatched : 19 Time :

Received : 11th August 19 40 Time : 06.50

Recd.  
① ②

78616 10/8 my 73269 7/6 and your telegram 18/6 to War Office:

It is proposed to despatch to you two balancing central moving motor controlled defence electric lights to illuminate entrance of Port William so that fixed defences may fire at night. Impossible to despatch equipments without information as to <sup>siting</sup> ~~sighting~~ of lights, engine rooms and electric light directing stations enable suitable cables to be sent. Hand books and instructions forwarded to you by post but it would greatly expedite despatch if this information could be cabled now.

I.D.



(14)

To U.S.S.W.

From H.E. McG. F. 15.

No map coordinates available

Your telegram 78616 10/8 Distance from  
outbuilding to house engine to sites for lights

100 yds. No existing electricity supply  
available Assuming light directing  
station in lighthouse this is 75 yds. from  
site for lights & 75 yds from engine house

Grateful early dispatch



DECODE.

SENT

TELEGRAM.

From H. E. THE GOVERNOR

To UNDER SECRETARY OF STATE FOR WAR

---

Despatched : 20th August 19 40 Time :

Received : 19 Time :

UNNUMBERED.

Your telegram 78616 10/8. No map coordinates available. Distance from outbuilding to house engine to sites for lights 100 yds. No existing electricity supply available. Assuming light directing station is lighthouse this is 75 yds from site for lights & 25 yds from engine house. Grateful early despatch.

I.D.

# SECRET

Tel. No.—Whitehall 9400.

Any further communication on this subject should be addressed to:—  
The Under-Secretary of State,  
The War Office,  
London, S.W.1.  
and the following number quoted.



THE WAR OFFICE,  
LONDON, S.W.1.

118/Abroad/4452

9<sup>th</sup> July, 1940

Sir,

Reference War Office telegram 73269 (A.A.2.b.) of June 7th, and your reply June, 18th. 1940.

I am directed to forward some Notes on the Siting of Defence Electric Lights, together with the handbook of instructions for the Manning of Coast Defence Searchlights and Engine Rooms 1939, the handbook of the Projector Fortress, Mk.V. 1939, and M.E. Vol. II, 4927./937

I am to say that it is hoped that this will assist you to reply to the War Office telegram referred to above and that you will be able to reply in accordance with the pro-forma attached to this letter. This information is required in order to arrange issue of the various electric cables required.

I am,  
Sir,  
Your obedient Servant

*N. B. Perkins Col.*

h Director of Anti-Aircraft and  
Coast Defence.

The Governor.  
Falkland Islands.

PRO-FORMA for Telegram in reply to War Office Telegram 73269(A.A.1.b)  
of 7-6-40

ER to No.1. ELE .....YDS Stop ER to No.2

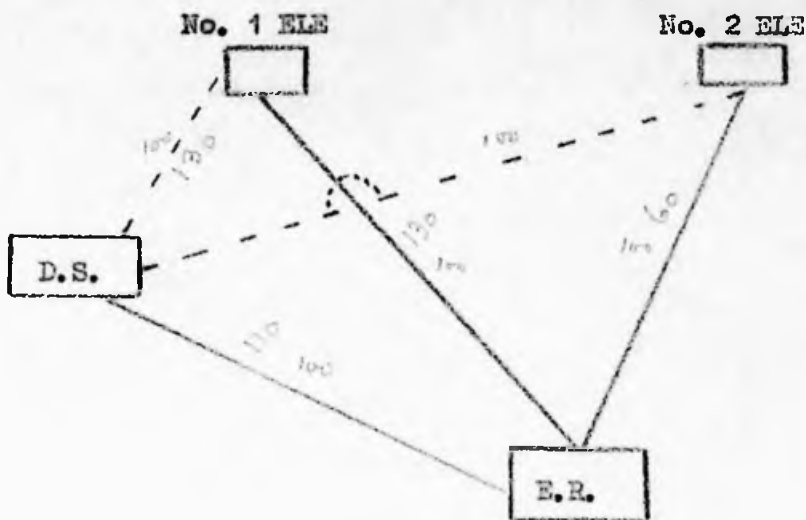
ELE ..... YDS Stop ER to DS .....YDS Stop.

DS to No.1 ELE .....YDS Stop. DS to No. 2

ELE .....YDS Stop.

DIAGRAMATIC LAYOUT OF D.S. CONTROLLING

2 MOVING LIGHTS



ELE = Electric Light Emplacement i.e. where the actual Searchlight is housed.

D.S. = Directing Station i.e. is the Observation Post from which the Searchlights are controlled in Bearing and Elevation by means of Switches. The D.S. is usually sited adjacent to the B.O.P. (Battery Observation Post).

E.R. = Engine Room i.e. is the building housing the Generators.

This should be sited in a concealed and protected place not more than 300 yards from either of the ELEs.



NOTES ON THE SITING OF SEARCHLIGHTS AND  
DIRECTING STATIONS FOR COAST DEFENCE

Foreword.

The general considerations governing the choice of sites for searchlight emplacements, Directing Stations and Engine Rooms are given in M.E.Vol. II Defences.

These notes are intended to amplify the instructions in M.E.Vol. II by indicating in greater detail some of the practical considerations affecting the visibility of targets and the principles on which siting should be based.

The notes have been compiled from data obtained from practical experience and experiment at the School of Electric Lighting and from visibility measurements carried out by the Air Defence Experimental Establishment on their Searchlight Range at Portland in 1936.

The experiments were done with the 90 c.m. C.D. projector and concentrated beam from an H.C.D. lamp of about 200 million maximum beam candle-power.

Definition.

The term "effective horizontal displacement" used in these notes, means the distance from the Directing Station (D.S.) to the beam, measured normal to the beam or to the line of the beam produced inshore.

This obviously varies with the bearing of the beam.

1. General Considerations.

In Coast Defence, the siting of close defence guns, searchlights and directing stations is a combined operation and the requirements of the Artillery, Navy and so on may prevent the choice of the ideal sites for searchlights and D.S.

These notes are intended to assist the Engineer Officer concerned to appreciate the advantages and disadvantages of alternative sites and to avoid sites that are definitely unsuitable.

Whenever practicable, it is most desirable, before any scheme is finally approved, to test the layout with searchlights under the various typical atmospheric conditions prevailing in the locality.

The question of range of the searchlight beam under typical atmospheric conditions is an important one in this connection, but these notes are primarily concerned with relative siting of searchlight and D.S. from the point of view of the visibility of a target from the D.S. under ordinary good atmospheric conditions.

Local conditions such as the prevalence of high mist or low mist, fog, etc., must obviously be taken into account especially when considering the height of the D.S. above the searchlight.

2. Searchlight Emplacements relative to sea-level.

In sheltered sites, 10 feet above high water mark is sufficient. In exposed positions this figure may have to be increased to 20 feet or even more, but should be no more than is absolutely necessary.

At elevations above 35 feet the need for constant vertical adjustment greatly increases the difficulty of searching and following.

Armoured plate glass ports in the emplacement could be used if necessary, to safeguard low sites in exposed positions.

3. Considerations affecting site of D.S. relative to the searchlight emplacement.

The visibility of a target from the D.S. increases as the displacement of the D.S. from the searchlight increases, this applies both to vertical displacement above the searchlight and to horizontal displacement.

Owing to the foreground glare vertical displacement below the searchlight is notably inferior to vertical displacement above. It will not be referred to again in these notes.

Zero Vertical Displacement.

Experiment has shown that with zero vertical displacement, visibility improves rapidly with horizontal displacement up to about 100 feet, thereafter the increase continues steadily, but at a considerably lower rate.

For satisfactory visibility the horizontal displacement should not be less than 45 feet under good atmospheric conditions, but 100 ft. is a better minimum to aim at.

Zero Horizontal Displacement.

Similarly with zero horizontal displacement visibility increases rapidly up to about 40 feet vertical displacement above the searchlight, thereafter the increase continues at a more gradual rate. For satisfactory visibility the vertical displacement (with no horizontal displacement) should not be less than 45 feet under good atmospheric conditions, but a practical point in control of the searchlight comes in here :-

If the D.S. is immediately above the searchlight - it is difficult to judge the correct elevation of the beam, so that it is desirable to have some horizontal displacement at any rate for the most important bearings of the beam.

In addition the glare from the beam is worse from an observation point of view if there is no horizontal displacement.

As a practical guide the horizontal displacement should always at least equal the vertical for all the most important bearings of the lights but where this is not possible some horizontal displacement is better than none.

D.S. Behind the Searchlight.

In some cases the D.S. may have to be behind the light, in which case the vertical displacement above the searchlight must be sufficient to obviate any dead angles and to cover the whole area of illumination.

4. The foregoing refers to the simple case where the searchlight is on one particular bearing e.g. on its central or most important bearing and may be summarised as follows :-

To obtain good visibility the displacement of the D.S. may be horizontal (preferably not less than 100 feet) or vertical (preferably not less than 45 feet) or at some angle above the horizontal, but for effective control of elevation, should always include a horizontal component of at least 20 feet.

8

A searchlight in practice may have to cover an arc of 120 degrees or even more.

The vertical movements of a coast defence searchlight beam are very small and obviously the vertical component of the displacement remains practically constant for any bearing of the beam, hence vertical displacement is a great advantage.

The horizontal component on the other hand varies with the bearing of the beam, and falls off as the searchlight traverses from its centre bearing towards or away from the D.S. e.g. with the beam at 60 degrees from its centre line, the effective horizontal displacement is halved.

It is therefore a distinct disadvantage (especially with a wide arc of traverse) to have no vertical displacement, and vertical displacement up to 45 feet or more is well worth pursuing.

On the other hand experience shows that a vertical displacement with only the minimum horizontal displacement is not so effective as when combined with a larger horizontal displacement. So that generally speaking increase of either vertical or horizontal displacement or of both will increase the visibility of the target.

There are obvious practical difficulties which impose limits on these increases.

The difficulty of accurate remote control of a searchlight from the D.S. increases as the horizontal distance from the searchlight increases, and for this reason horizontal displacement should not exceed 1,000 feet and 600 feet is a better maximum to aim at.

The ideal therefore to aim at, is roughly as follows :-

Maximum vertical displacement combined with 600 feet horizontal displacement.

On the other hand minimum requirements for good visibility under good atmospheric conditions are roughly as follows :-

<u>Vertical Displacement</u> combined with <u>Horizontal Displacement</u>	
feet	feet
0	100
25	90
45	45
50	20

These figures are given as a rough guide and should always be exceeded if possible.

The horizontal displacements should be measured for the least favourable bearing of the beam.

5. To illustrate the application of these rules Fig.I shows in plan a searchlight site S/L and possible sites for the D.S.

E.1 and E.2 at 600 feet normal to the centre bearing would be the best position to aim at if little or no vertical displacement were obtainable, E.1 being better for the Northern half of the Sector and E.2 for the Southern. Such positions would be satisfactory with little or no vertical displacement although any amount of vertical displacement would be an advantage.

E.3 and E.4 at 1,000 feet horizontal displacement would be on the

/limit



limit of horizontal displacement for effective control of the Searchlight.

Positions further inland are obviously less advantageous for control over the whole range of traverse as the effective horizontal displacement becomes less for one or the other half of the Sector.

Similarly sites on the line E.1 - E.2 should be progressively higher as they approach S/L e.g. at B.1 the effective horizontal displacement from the most important bearing is about 200 feet, and from the limit of traverse south about 50 feet.

The vertical displacement should therefore not be less than say 35ft. to 40 feet for good visibility over the southern half of the sector, and should preferably be more, up to say 70 or 80 feet for the ideal.

Inland or West of the line E1 E2., the effective horizontal displacements become less for one or other half of the Sector of illumination and vertical displacements become increasingly important, in addition the question of sufficient height to observe the whole area arises, therefore sites East of the line A.1 - S/L. - A.2 would be better than sites West of this area.

Sites such as F and C which have little or no horizontal displacement as regards the most important bearing and the centre bearing respectively have disadvantages, as in spite of vertical displacement there would always be more glare to contend with for control on these bearings, therefore North of C or South of F would be preferable. D at about 1,000 feet from the S/L. is on the limit of distance as noted in para.4.

#### 6. Control of 2 searchlights by one D/S.

A D.S. is frequently required to control a pair of lights. Similar rules apply in such cases and if vertical displacement of 45 to 50 feet is obtainable there should be no particular difficulty. If, however, the D.S. has to be well to the flank of two searchlights sited close together it may be difficult to observe and follow targets in the further beam.

As a rough rule the line joining the D.S. to the further searchlight should make an angle with the horizontal of at least 10 degrees, the searchlight furthest away being sited as high and the nearer light as low as practicable. In such cases the D.S. should be placed as high and the searchlights as far apart as possible.

In cases where the D.S. has to be sited between two searchlights, similar rules to those given for a single searchlight should be applied in respect of each light, e.g. the smaller the vertical displacement the greater must be the horizontal displacement relative to each searchlight, so that searchlights should be well apart if little vertical displacement is available.

The disadvantage of this position of the D.S. is that when both lights are exposed, the observer feels boxed in, i.e. cut off from view of what may be going on elsewhere.

#### 7. Searchlights relative to close defence guns.

The same rules and displacements given above for D.S. and lights govern the relative position of close defence guns and lights, as a similar limit of horizontal displacement is imposed by the difficulty of observing the fall of shot when the line of fire makes a considerable angle with the line of the beam.

8. D.S. relative to guns.

It is most desirable that the D.S. should adjoin the B.C's. post and as the requirements of the guns for night work are practically the same, vis-a-vis, the searchlights as those of the D.S., it should usually be possible to site them together. The D.S. must, however, be clear of gun flash.

If the B.Cs. post cannot be sited in a position suitable for the D.S., then the D.S. must be sited in the best place for the control of the lights, but if the guns are to one flank of the lights, the D.S. must be in the same flank.

9. Illuminated Areas.

In this case, similar rules apply, with obvious modifications for an area permanently illuminated by fixed lights as opposed to one swept by a concentrated moving beam.

Siting of Searchlights. To avoid unlit water the lights must be sited low, slits and if necessary armour plate glass ports being used to prevent the entry of spray.

To make use of the full dispersion of each beam, and avoid black patches, the lights must be grouped close together.

Observation Post and Guns. In this case no question of the control of the searchlight beams arises, so that horizontal displacement is not required for either lights or guns, moreover displacement to one flank of an illuminated area obviously makes observation difficult on a target in the further sector of the area.

Vertical displacement is therefore the main consideration.

A site above the searchlights and fairly close to them will be found most suitable.

To avoid dead water the guns should normally be sited as low and as far forward as is compatible with a good view of the target and adequate range from their auto-sights - e.g. about 25 feet above the searchlights.

In practice with a vertical displacement of between 20 to 35 feet, a site within 300 feet of the light will usually be satisfactory.

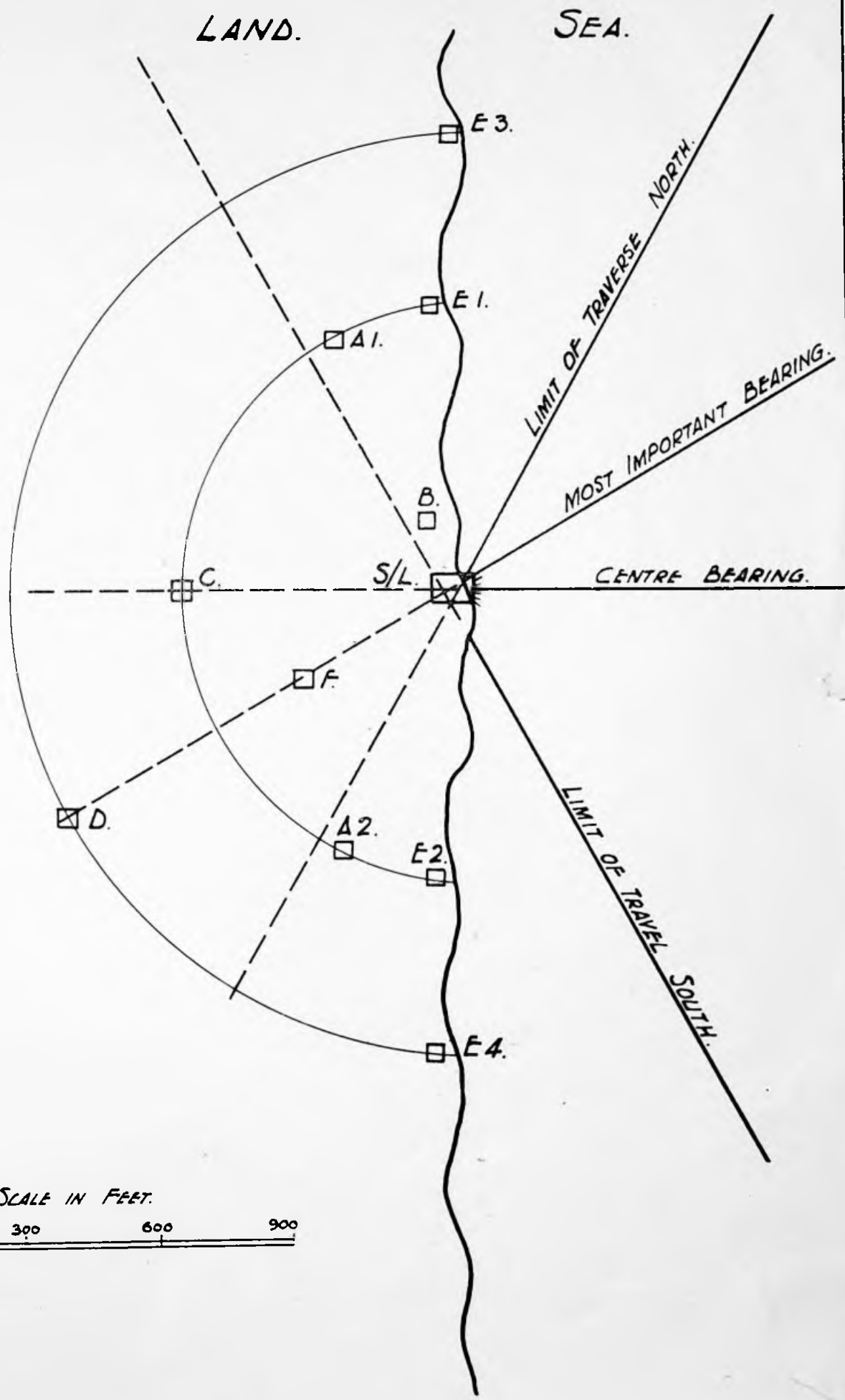
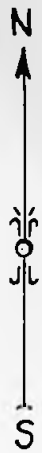
If this is not practicable, it will be difficult to obtain adequate visibility over the whole of any considerable illuminated area from one flank only and guns should therefore be sited on both flanks from 400 to 800 feet from the searchlights.

A.A.1(c).

May, 1940.

6

FIGURE 1.



(3d) O. STEERS.  
 CAPT. R.E.  
 TECHNICAL INSTRUCTOR  
 S.E.L. GOSPORT.

DECODE.

Sent.

TELEGRAM.

13

From..... H.E. THE GOVERNOR .....

To..... UNDER SECRETARY OF STATE FOR WAR .....

*Despatched :* 5th September 19 40 *Time :*

*Received :* 19 *Time :*

15940.

Your W.O.T. 73269 (A.A.26) of 7th June. As result of further information contained in enclosures your letter 118/Abroad/4432 of the 9th July please cancel my telegram 20th August and substitute your complete pro forma as follows.

E.R. to No 1 ELE 130 yards.

E.R. to No 2 ELE 60 yards.

E.R. to D.S. 110 yards.

D.S. to No 1 ELE 130 yards.

D.S. to No 2 ELE 35 yards.

Repeat 130, 60, 110, 130 and 35 yards respectively. Please inform me approximate minimum size for E.R. Climatic conditions and fuel supply make C.I. engine highly desirable. Distance from United Kingdom suggests some spares with outfit.

I.D.

DECODE.

No 189

TELEGRAM.

14

From UNDER SECRETARY OF STATE FOR WAR

To H. E. THE GOVERNOR

---

Despatched : 19 Time :  
Received : 10th September 19 40 Time : 22.00

81546 10/9.

Recd (13)

Your 15940 5/9.

Three 22 Kilowatt Lister generating sets with necessary cable switchboards and spares being despatched as soon as possible.

Size of engine room 23 by 18 by 9 feet minimum height. Complete sets of drawings of structures have been posted. Do you require any technical assistance for installation.

I. D.

DECODE.

SENT

TELEGRAM.

15

From H. E. THE GOVERNOR

To UNDER SECRETARY OF STATE FOR WAR

---

Despatched : 14th September 19 40 Time :

Received : 19 Time :

15941 14/9.

Your 81546 10/9 Generating Sets. Technical assistance not required for installation.

I. D.

DECODE.

TELEGRAM.

16.

*From* Under Secretary of State for War,

*To* His Excellency the Governor.

---

*Despatched* : 20th October, 19 40. *Time* : 0815.

*Received* : 21st October, 19 40. *Time* : 1000.

85813 19/10 Following tonnages loaded in "Southern Empress" sailed October 6th. Ordnance Stores 15 tons 24 feet including 2 loose projectors fortress and 2 cases of electrical equipment (90 C.M.) Royal Engineers Stores 20 tons 23 feet includes 3 cases generating sets heaviest lift  $2\frac{3}{4}$  tons. Also loaded for South Georgia 2 cases cartridges S.A.A. ball mark VII.

UNDER SECRETARY FOR WAR.

I.D. "V". 10.

(17)

Any further communication on this subject should be addressed to:—  
The Under-Secretary of State,  
The War Office  
(as opposite)  
and the following number quoted.



THE WAR OFFICE,  
ROMNEY HOUSE,  
MARSHAM STREET,  
S.W.1.

SECRET.

118/Abroad/4432 (F.W.3.)

7th September, 1940.

Memorandum for:—

Officer Commanding  
Falkland Islands Defence Force.

Defence Electric Lights.

Two copies of the following drawings are being despatched to you under separate cover.

<u>Drawing No.</u>	<u>Description.</u>
✓ 54417	D.E.L. Emplacement (166° arc).
✓ 54405	Ventilating Flue, Details.
✓ 54558	Details of Sliding Shutters.
✓ 54572	Details of Channel Anchorage.
✓ 54668	Arrangement of Bottom Rails for Sliding Shutters
✓ 54837	Details of Steel Doors.
✓ 54670	Details of Hinges.
✓ 54849 A.	Projector Fortress 90 c/m (Mk. V and Mk. VI).
✓ 54756	{ D.E.L. Engine Room (Splinterproof) for 3 - 22 K.W. Lister Generating Sets.
✓ 54679	Details of Steel Doors for Engine Room.
✓ 54641	Details of Steel Shutters for Engine Room.
✓ 54670 (+)	Details of Locking Bar and Hinges.
✓ 54427	B.O.P. and E.L.O. Post (Emergency Installation)
✓ 54430	D.E.L. Emplacement. do.
✓ 54760	{ D.E.L. Engine Room for 3 - 22 K.W. Lister Sets. do.

Drawings illustrating both permanent construction and light construction for the engine rooms and the D.E.L. emplacements are included.

Please/



Please acknowledge receipt of this letter on  
attached Army Form, A.16.

*W. B. Britton*

for Director of Fortifications and Works.

Hon. Colonial Secretary.

(18.)

May the following cable be sent  
please to Under Secretary of State for War.

Your 85813 19/10. Stores received and number packages  
agrees invoices but no main switchboard, <sup>or</sup> and fittings  
for same <sup>received</sup> arrived. If not already sent request urgent  
despatch also wiring diagram for same.

*Please  
arrange as possible  
wiring*

*U.A.  
[Signature]  
24/11/40*

*sent 24/12/40*

*A D C*

*I.D.*

DECODE.

19.

TELEGRAM.

From His Excellency the Governor, .....

To Under Secretary of State for War.

---

Despatched : 24th December, 1940. Time : ...

Received : ... .. 19 ... Time : ...

med/b.

Your 85813 19/10. Stores received and number packages agrees invoices but no main switchboard or fittings for same received. Please despatch as early as possible urgent also wiring diagram for same.

GOVERNOR.

I.D.

DECODE.

20

TELEGRAM.

From Under Secretary of State for War,

To His Excellency the Governor.

---

Despatched: 25th December, 19 40. Time: 0605.

Received: 25th December, 19 40. Time: .....

*Red 16.*

94136 23/12 My 85813 19/10. F.W. 5. Following  
engineer stores shipped. Elec/219/1, 3 cases generating  
sets.

UNDER SECRETARY OF STATE FOR WAR.

I.D.

*no answer required*

DECODE.

21.

TELEGRAM.

From Under Secretary of State for War.

To His Excellency the Governor.

---

Despatched :      17th January,      1941.      Time : 2302  
Received :        18th January,      1941.      Time : 1400.

Your unnumbered telegram dated 24/12      -      My 85813 - 19/10  
A A 2B.      A 3 - engine 2 - light switchboards and wiring  
diagram sailing shortly.

UNDER SECRETARY OF STATE.

I.D.

22

To be retained at Station.

F.W.5. Form 1.

Reference No. F.W.5 15089 (L.F. 168.....).

THE WAR OFFICE,  
WHITEHALL,  
LONDON, S.W.1.

17 DEC 1940 19.....

Vote 10C.

Year 1940.....

Station Demand No. 60 294/G/5346 (60096).....

W.O. Order No. F.W.5 Blc/219/1..... No. of Bill F.W.5 15089.....

The O.6..... i/c Administration Falkland Island Command  
is informed that <sup>90% of</sup> the cost of Generating Sets.....

consigned to O.i/c R.E. Stores, Falkland Islands.....  
is £ 1433. 5. 3....., which has been billed in this Office chargeable to Vote 10C.

\*1.—~~The amount is chargeable against your Vote 10C. Class..... Stock account.~~

\*2.—The amount has been billed against Vote 10C. Pt. I..... Item 188 <sup>ASMR</sup>..... in this Office, and ~~will be chargeable against the allotment to be made to you at end of financial year to cover cost of War Office Stores.~~

3.—The counterfoil below is to be completed and returned.

• Strike out whichever is not applicable.

[Signature] Capt  
For the Director of Fortifications and Works.

Blc

Honourable Colonel  
Dunlop.

---

The attached W.O Form  
FW 5/1 is forwarded  
for completion &  
record please.

AW

O.C. D.F.

22. 11. 41

No.

(It is requested that, in any reference to this minute, the above Number and the date may be quoted).

MINUTE.

28th March, 19 41.

From The Officer Commanding

Troops,

Stanley, Falkland Islands.

To His Excellency the

Commander-in-Chief,

STANLEY.

DEFENCE ELECTRIC LIGHTS.

I have the honour to report that I have considered the various conditions governing the placing and control of the Defence Electric Lights.

The scheme in existence at the moment is to place both these lights at Cape Pembroke "for the purpose of illuminating the mouths of Port William", but it is open to the following criticisms :-

- (a) Mengeary Point is at or <sup>J</sup>just outside the effective limits of the lights.
- (b) It would not be possible to create an effective illuminated area with the type of lights available as they are narrow dispersion fighting lights.
- (c) The Tussac Islands blanket the lights to such an extent - see chart - as to render them completely useless as fighting lights.
- (d) The only spot not blanketed and between the islands would blind the gun layer at Mount Low (or Charles Point which latter site is far more suitable for the sighting of both the 12 pdr. guns.).
- (e) The distance of Cape Pembroke is so far from any fire control post as to render the manoeuvring of the lights impossible.
- (f) All guns would be firing across the beams and there would be difficulty in observing the fall of shot. "Plus" rounds could not be observed.
- (g) The lights would be too vulnerable from attack by a small fast craft from a point say 500+ North East of the Lighthouse and no guns could engage such craft owing to the Tussac Islands.
- (h) They would betray the entrance to the port from far out to sea.
- (i) They are primarily intended for "close defence work" against small and fast moving craft and to enable action by quick firing defence guns.

Therefore, it is suggested that one light be placed in a selected position at Charles Point, where in a report on gun positions I will suggest the placing of the two 12 pdrs. and that the second light be erected at Ordnance Point where the two 3 pdr guns from Tussac Point have been re-erected.

This/



This placing of the lights will illuminate the water East and West of Arrow Point - York Point.

Charles Point could be used either as a stationary beam or a fighting light and Ordnance Point as a fighting light.

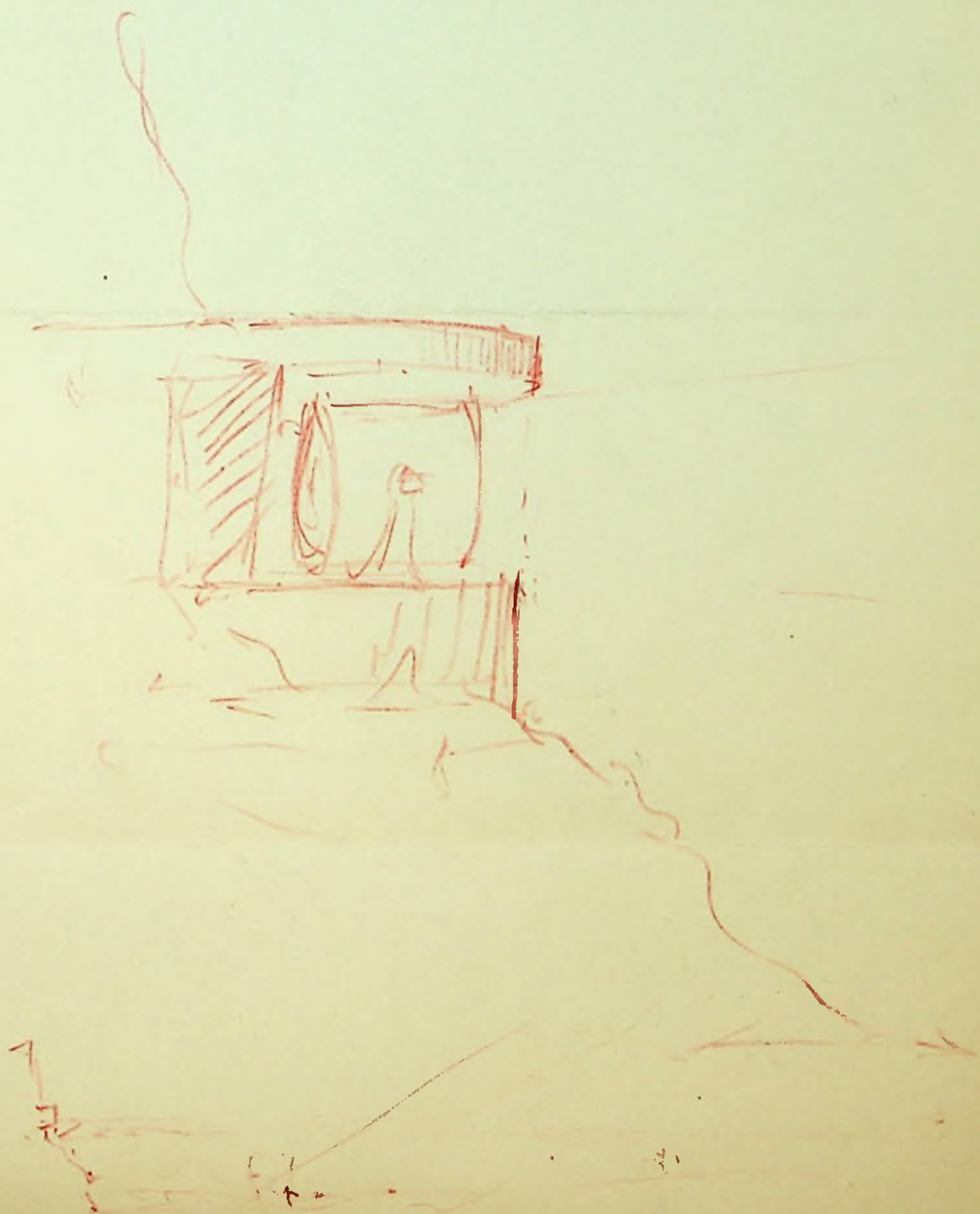
For approximate areas of operation see chart.

If Your Excellency approves of the scheme suggested may I have permission to cancel further work of preparation at Cape Pembroke and arrange for a detailed survey of Charles Point and Ordnance Point in order to fix the exact position of the lights.

The scheme would necessitate demolition of the upper <sup>portion</sup> position of High Rock but this is not a difficult matter.

C. D. G.

Officer Commanding Troops.



No. \_\_\_\_\_

MINUTE.

(It is requested that, in any reference to this minute, the above Number and the date may be quoted.)

31st March, 19 41,

*From*

*To* Major J. A. Woodgate,

Officer Commanding Troops,

STANLEY.

Stanley, Falkland Islands.

DEFENCE ELECTRIC LIGHTS.

The attached copy of a report to His Excellency is forwarded for your perusal and return.

His Excellency has signified his approval and confirms the necessity for not proceeding further with work at Cape Pembroke.

The Chart referred to is in this Office.

*O.C. Troops.*

*Alpha Thank you*

*W.S. 1. IV. 41.*

*C. D. Manning*  
Lieut. Col.

Officer Commanding Troops.

No.

(It is requested that, in any reference to this minute, the above Number and the date may be quoted).

MINUTE.

28th March, 19 41.

From The Officer Commanding

Troops,

Stanley, Falkland Islands.

To His Excellency the

Commander-in-Chief,

STANLEY.

DEFENCE ELECTRIC LIGHTS.

I have the honour to report that I have considered the various conditions governing the placing and control of the Defence Electric Lights.

The scheme in existence at the moment is to place both these lights at Cape Pembroke "for the purpose of illuminating the mouths of Port William", but it is open to the following criticisms :-

- (a) Mengeary Point is at or <sup>J</sup> just outside the effective limits of the lights.
- (b) It would not be possible to create an effective illuminated area with the type of lights available as they are narrow dispersion fighting lights.
- (c) The Tussac Islands blanket the lights to such an extent - see chart - as to render them completely useless as fighting lights.
- (d) The only spot not blanketed and between the islands would blind the gun layer at Mount Low (or Charles Point which latter site is far more suitable for the sighting of both the 12 pdr. guns.).
- (e) The distance of Cape Pembroke is so far from any fire control post as to render the manoeuvring of the lights impossible.
- (f) All guns would be firing across the beams and there would be difficulty in observing the fall of shot. "Plus" rounds could not be observed.
- (g) The lights would be too vulnerable from attack by a small fast craft from a point say 500+ North East of the Lighthouse and no guns could engage such craft owing to the Tussac Islands.
- (h) They would betray the entrance to the port from far out to sea.
- (i) They are primarily intended for "close defence work" against small and fast moving craft and to enable action by quick firing defence guns.

Therefore, it is suggested that one light be placed in a selected position at Charles Point, where in a report on gun positions I will suggest the placing of the two 12 pdrs. and that the second light be erected at Ordnance Point where the two 3 pdr guns from Tussac Point have been re-erected.

This/

264

This placing of the lights will illuminate the water East and West of Arrow Point - York Point.

Charles Point could be used either as a stationary beam or a fighting light and Ordnance Point as a fighting light.

For approximate areas of operation see chart.

If Your Excellency approves of the scheme suggested may I have permission to cancel further work of preparation at Cape Pembroke and arrange for a detailed survey of Charles Point and Ordnance Point in order to fix the exact position of the lights.

The scheme would necessitate demolition of the upper <sup>portion</sup> position of High Rock but this is not a difficult matter.

*C. D. Anderson*  
*Col.*

Officer Commanding Troops.

To be retained at Station.

F.W.5. Form I.

Reference No. F.W.5 15129 (L.F. 168).

THE WAR OFFICE,

WHITEHALL,

LONDON, S.W.1.

1 FEB 1941

19.....

Vote 10C.

Year 1940

Station Demand No. 66. 294/G/5346 (6096)

W.O. Order No. F.W.5 Eled 219/1 No. of Bill F.W.5 15129

The O. 6 i/c Administration Falkland Islands Command

is informed that the cost of Carriage only: Generating Set:

F.W.5. Form I No. 15089 refers

consigned to O.i/c R.E. Stores, Falkland Islands

is £ 12 0 0, which has been billed in this Office chargeable to Vote 10C.

\*1.—The amount is chargeable against your Vote 10C. Class Stock account.

\*2.—The amount has been billed against Vote 10C. Pt. I Item 188 200R in this Office, and will be chargeable against the allotment to be made to you at end of financial year to cover cost of War Office Stores.

3.—The counterfoil below is to be completed and returned.

\* Strike out whichever is not applicable.

[Signature]  
For the Director of Fortifications and Works.

Tel. No.—

Any further communication on this subject should be addressed to:—  
The Under-Secretary of State,  
The War Office  
(as opposite)  
and the following number quoted.



THE WAR OFFICE,

30

ROMNEY HOUSE,  
MARSHAM STREET,  
LONDON, S.W.1.

B.M. 145 (F.W.3.)

8th January, 1941,

Memorandum for:—

General Officer Commanding,  
Burma.  
Officer Commanding Troops,  
Trinidad.  
Mauritius.  
Jamaica.  
Ceylon.  
Faroe Islands.  
St. Helena.  
Iceland.  
Falkland Islands. ✓  
General Officer Commanding,  
West Africa (Accra).  
Malaya.  
East Africa (Nairobi).

General Officer Commanding,  
Hong Kong.  
Officer Commanding British  
Troops Aden.  
Commander-in-Chief,  
Middle East.  
His Excellency The Governor and  
Commander-in-Chief,  
Bermuda.  
Malta.  
Gibraltar.  
Military Liaison Officer,  
Canada.  
Australia.  
New Zealand.

Herewith for your information 2 copies of the following War Office type Drawings:—

- No.20. - R.C. Double M.G. Emplacement.
- No.21. - R.C. Emplacement for Two M.G.'s.
- No.22. - R.C. Splinterproof Post for Bren or Lewis Guns.
- No.32. - R.C. Splinterproof Post for Bren or Lewis Guns for Local Ground and A/A Defences.
- No.24. - R.C. Splinterproof Post for Bren or Lewis Guns.
- No.39. - Dimensions of A/T and Field Guns for use in designing Emplacements.

*Handwritten signature*

*Receipt ask number  
on 1-5-41  
C.H.H.*

for Director of Fortifications and Works.

22

K.W. 100

VOLTS 1000

R.P.M.

D.C. COMPOUND WOUND GENERATORS

NOS. 9136/9185. INCLUSIVE

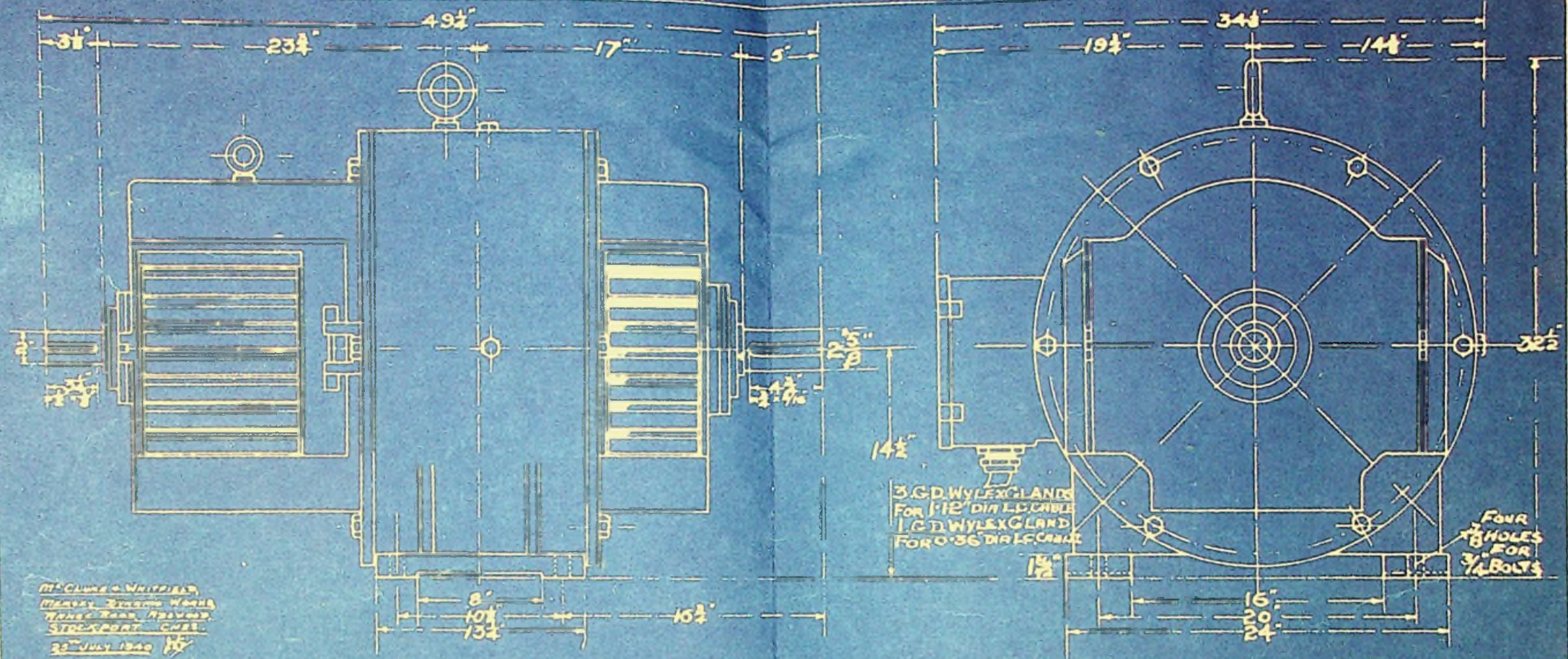
CONTRACT W.O. M.I.S.C. 5639/ELEC 219/1.

CONTENTS

RUNNING INSTRUCTIONS

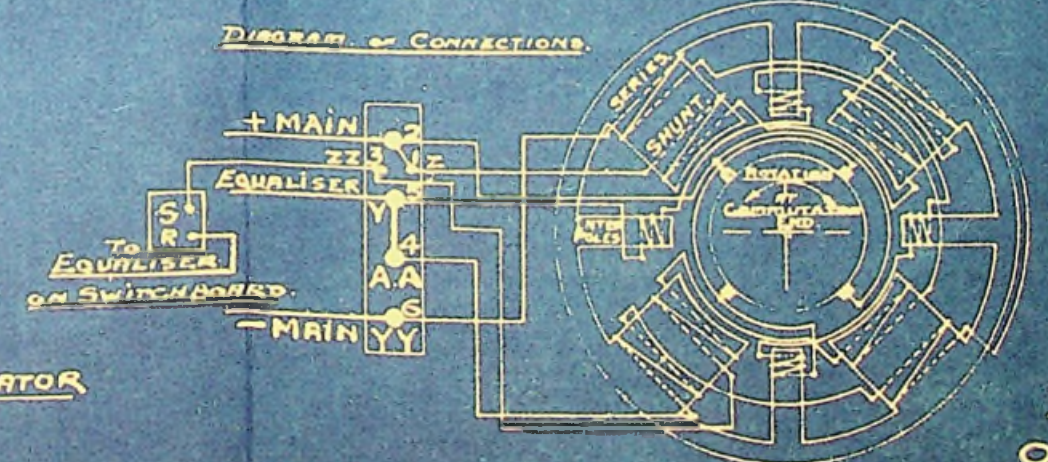
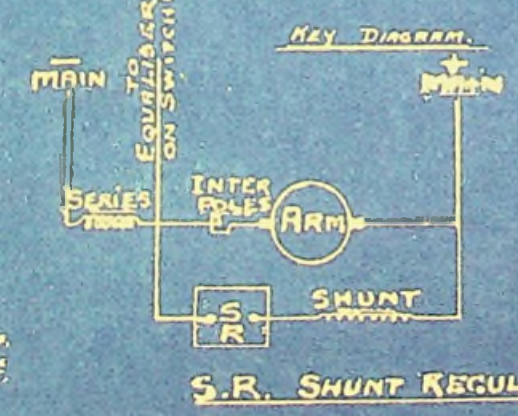
DRAWINGS	DESCRIPTION
O.L. 9136/85.	OUTLINE OF GENERATOR
	DIAGRAM OF CONNECTIONS
	KEY DIAGRAM OF GENERATOR
C.C. 9136/85.	CHARACTERISTIC CURVE OF GENERATOR
R. 5786.	OUTLINE OF FIELD REGULATOR





FRAME 9A D.C. GENERATOR. COMPOUND WOUND. 22 KW. 100 VOLTS. 1000 RPM. For Messrs W.H. DORMAN & Co. Ltd. ORDER No. A. 3932. 31<sup>st</sup> MAY 1940  
 NOT TO SCALE H.O. CONTRACT. 4 MISC 5639 / ELEC R19/1. NUMBER ORDERED 50. SERIAL NOS 9136 & 9166.

FRAME 9B D.C. GENERATOR. COMPOUND WOUND. 22 KW. 100 VOLTS. 1000 RPM. For Messrs W.H. DORMAN & Co. Ltd. ORDER No. A. 3952. 31<sup>st</sup> MAY 1940  
 W.O. CONTRACT. 4 MISC 5639 / ELEC R19/1. NUMBER ORDERED 50. SERIAL NOS 9166 & 9165.



M<sup>c</sup>CLUNE & WHITFIELD,  
 MANLEY ENGINE WORKS,  
 10, KING ROAD, ASHWOOD,  
 STOCKPORT, CHES.  
 23<sup>rd</sup> JULY 1940

DRAWING No  
 O.L. 9136/85.

APPROXIMATE CHARACTERISTIC CURVE OF  
 McCLURE AND WHITEFIELD, D.C. GENERATOR  
 22 K.W. 100 VOLTS 1000 R.P.M. LOADED  
 COMPOUND WOUND.

GENERATOR SET AT 100 VOLTS RUNNING LIGHT AT 1030 R.P.M. AND LOADED UP TO  
 FULL LOAD AT 1000 R.P.M.

VOLTS

110

100

90

MESSRS W.H. DORRMAN & CO. LTD. ORDER NO. A/3932

W.O. CONTRACT 4. M.I.S.C. 5639 / ELEC 219/1.

McCLURE & WHITEFIELD,  
 RANGE ROAD, ADSWOOD,  
 STOCKPORT.

10<sup>TH</sup> SEPT 1922

0	20	40	60	80	100	120	140	160	180	200	220
RPM. 1030		1022	1020	1015	1015	1015	1012	1010	1005	1000	1000
Light											LOADED

DRAWING No C.C. 9136/85.

22 K.W. 220 AMPERES 100 VOLTS 1000 R.P.M.

D.C. COMPOUND WOUND 'MERSEY' GENERATORS Nos. 9136 to 9185.

MADE TO WAR OFFICE CONTRACT. 4. M.I.S.C 5639/ELEC 219/1.

BRIEF SPECIFICATION AND RUNNING INSTRUCTIONS.

'MERSEY' D.C. Generators are of high standard and quality, the outcome of 45 years' experience in the design and manufacture of continuous current electric machines.

YOKE. The yoke body is of special High Grade Welded Steel, to which the main pole pieces and Interpoles are firmly secured.

END BRACKETS. The end brackets are of fine grey cast iron fitted with Drip-proof Louvred type covers.

The Commutator end bracket carries the Brush Rocker and Brush Gear, the Brush Rocker being split across the centre for ease of removal. The Commutator end bracket is fitted with Medium Size Ball Journal Bearing (SKEFCO RMS 18) and the Back End Bracket with Medium Size Roller Journal Bearing (SKEFCO CRM 22)

When the Generators leave our works they are fitted with a liberal supply of high quality lubricating grease, and wastage can be replaced by using grease suitable for the climatic conditions in which the Generators are to operate. The grease reservoir should be filled up by means of "Tecalemit" grease gun (supplied with Generator) This gun is fitted with special attachment to fit  $\frac{1}{8}$ " Gas nipples fitted in bearing housings.

DO NOT OVER-GREASE.

BRUSH GEAR. The Brushes fitted are 16 in number (4 per spindle) "Battersea" Electrographitic Carbon, quality EG.12, section  $\frac{7}{8}$ " x  $\frac{1}{2}$ ". When fitting new Brushes care should be taken to see that these are firmly bedded to the face of the commutator, by rubbing the face of the Brushes with carborundum or similar abrasive cloth, smooth side of cloth to commutator face, rough side to Brush face, cloth to be moved slowly over commutator face against the pressure of Brush-holder springs until the full face of Brush is bedded to commutator surface.

All dust should be removed from commutator, commutator risers, and Brush gear.

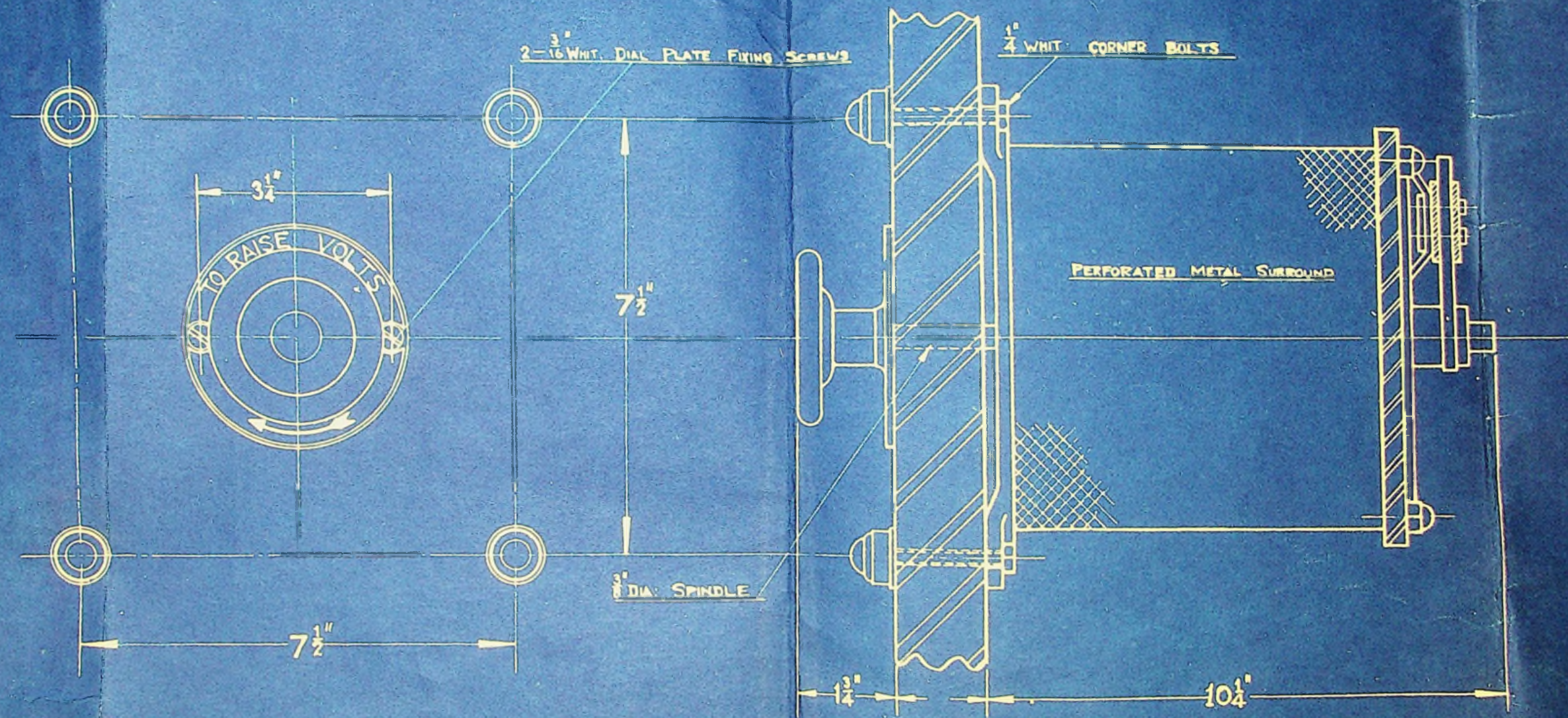
COMMUTATOR After a period of service the commutator should have a polished and bronzed appearance. Oil or grease should not be allowed to get on the commutator. The mica separators between the commutator segments are slightly undercut below the surface of the copper segments, and as the copper segments wear in service it will be necessary to undercut the micas accordingly, taking care not to scratch or damage the surface of the copper segments. All dust should be removed from commutator and Brush gear by means of a soft brush.

REGULATORS The Regulators should be kept clean and the sliding contacts examined and adjusted from time to time to ensure satisfactory contact with the resistance studs. Oil or grease should not be allowed to get on the resistance tubes or sliding contacts.

GENERAL The Machine should be kept clean and periodically blown out to remove dust and dirt, particularly as regards the commutator and Brush gear.

GUARANTEE Within twelve months from date of purchase, we undertake to make good any defect discovered in any of our machines in respect of material or workmanship, provided that notice is given to us as soon as it is discovered, and that the machine or defective part is immediately forwarded to our Works, carriage paid. Our responsibility is in all cases limited to the cost of making good the defect. This guarantee is to exclude and take the place of any condition or warranty implied by statute or otherwise, and does not apply to defects caused by improper fixing or application, wear and tear, accident or neglect. We disclaim any responsibility for any repairs made, or attempted to be made, by other parties without our written sanction.

McCLURE and WHITFIELD, RANGE ROAD, ADSWOOD, STOCKPORT, ENGLAND.



MESSRS W. H. DORMAN & Co. LTD. STAFFORD. ORDER A/3932. W. O. CONTRACT 4. M. I. S. C. 5639/ELEC 219/1.  
 FOR USE WITH 22.K.W. 100. VOLT. D.C. GENERATORS.

**B.O.B SHUNT REGULATOR**

MCCLURE & WHITFIELD STOCKPORT.  
 DRAWN:   
 SCALE: - HALF SIZE  
 D.R.G. N° R.5786.

Tel. No.—

Any further communication on this subject should be addressed to:—  
The Under-Secretary of State,  
The War Office  
(as opposite)  
and the following number quoted.



THE WAR OFFICE,

31

57/Engrs./2986 (O.S.3.c.)

77 January, 1941.

SECRET.

Sir,

Carbons, H.C.D. for burning in  
Defence Electric Lights.

I am directed to say that action is proceeding to issue, without demand, such numbers of carbons as well as the accompanying bushes and electrodes positive and negative feed as will bring your reserve stocks up to a total sufficient for approximately 900 hours burning less any losses through breakage.

In view of the impossibility of replacing or improvising these stores locally I am, further, to draw your attention to the vital importance of minimising the risk of loss from enemy action by dispersing them as widely as possible.

I am,  
Sir,  
Your obedient Servant,

for Director of Ordnance Services.

His Excellency the Governor and Commander-in-Chief, Bermuda.  
" " " " " " Gibraltar.  
" " " " " " Falkland Islands.  
" " " " " " Malta.  
Commander-in-Chief, Middle East. (Copies to Aden; G.O.C. British  
Troops in Egypt; Palestine and  
Trans-Jordan.)  
General Officers Commanding-in-Chief,  
British Troops in China, Hong Kong; Iceland.  
Officers Commanding Troops,  
Ceylon, Cyprus, Faroes, Jamaica, Mauritius, St. Helena,  
Sierra Leone, Trinidad.  
General Officer Commanding, Malaya.

URGENT.

Army Form A16.  
(Pads of 100).

RECEIPT FORM.

To be completed and returned immediately in a single unregistered envelope to

.....  
.....  
.....

I hereby acknowledge the receipt of the undermentioned:—

Ref. No.	No. of copies	Copy Numbers	Distribution
59/Genf 1102/3 AA 2(3)	1		J. + C. in C. Falkland Islands
Worms, Diagrams for 22 KW Gen. Info with Old Pat. D.F.L. Southwood SKETCH No 897 (FW4(81))		4 copies	

Signed .....

Address .....

Date ..... 193.....

REMARKS.

.....  
.....  
.....  
.....  
.....

Note: The title of a Secret or Confidential Document must not be written on this Form.

Tel. No.—Whitehall 9400.

Any further communication on this subject should be addressed to:—  
The Under-Secretary of State,  
The War Office,  
London, S.W.1.  
and the following number quoted



THE WAR OFFICE,  
LONDON, S.W.1.

57/Gen/1102/3 (A.A.2.b.).

4<sup>th</sup> February, 1941.

SECRET.

Sir,

Defence Electric Lights.

I am directed to refer to your unnumbered cipher telegram dated 24th December, 1940 and to War Office cipher telegram No. 97408 dated 16th January, 1941, and to forward herewith four copies of War Office drawing No. 897 (F.W.4.b.) wiring diagram for 22 K.W. (New type) Generating sets with old pattern D.E.L. switchboards.

I am to request that receipt of these drawings be acknowledged on attached Army Form A.16.

I am,  
Sir,  
Your obedient Servant,

*Hummer Cole*  
Major G.S.

*H* Director of Anti-Aircraft and Coast Defence.

The Governor and  
Commander-in-Chief,  
Falkland Islands.

SUMMARY OF ORDINANCE EQUIPMENT FOR D.E.L's.

Designation	Emplacement Equipment Each D.E.L.			Additional Spares for each Fire Command or Group		Each Engine Room	Each D.S.	Remarks
	Mk. V Mov- ing	Mk. VI fixed	Spares for every 4 or less D.E.L's in each Fire Command	With 4 or less D.E.Ls.	With more than 5 D.E.Ls.			
<u>Section F.</u>								
Brushes, dusting	1	1	-	1	2	-	-	(a) 1 for each moving light plus 1
Files, second cut, half round, 4-in.	1	1	-	1	1	-	-	each D.S. for Ports Abroad. 2 each
" Handles, small	1	1	-	1	1	-	-	directing station controlling moving
Pliers, gas, 9-in.	1	1	-	1	2	-	-	lights, 1 each directing station con-
Pliers, sidecutting, 5-in.	1	1	-	1	1	-	-	trolling fixed lights, for Ports
Screwdrivers, cabinet, 6-in.	1	1	-	1	1	-	-	at Home.
Filters, oil	-	-	-	-	-	1	-	(b) 1 each moving light (Projectors
Lamps, brazing, 1-pt.	-	-	-	-	-	1	-	earlier than Mk. V).
Vices, bench, parallel, cast 6-in.	-	-	-	-	-	1	-	(c) Ports at home - 15 per light.
<u>Section K.</u>								
Lamps, kerosene No.1 or 3	1	1	-	-	-	2	-	Ports abroad - 180 per light.
Clocks, bracket	-	-	-	-	-	1	-	(d) 10 x (c)
<u>Section V.2</u>								
Watches G.S. (or A.T.P.)	-	-	-	-	-	-	1	(e) 1 per 100 Positive carbons.
<u>Section V.6</u>								
Binoculars No.5	(a)	-	-	-	-	-	-	(f) Type as ordered by War Office, to
<u>Section W.2</u>								
Batteries dry torch Mk.I	1	1	1	1	2	1	2	include at least 1 spare of each
" " " " (spare)	1	1	2	2	4	2	4	type in operation.
Bulbs 3.5 volt P spare	1	1	4	4	8	4	8	(g) 1 spare for every 4 or less moving
Cable, elec.J.single, low 0.002 yds	-	-	-	50	100	-	-	lights.
Cable, elec.M.low 0.15 yds	-	-	-	25	50	-	-	(h) 1 for each 2 moving lights.
Connectors 9/16-in Mk.I	-	-	-	2	4	-	-	(i) Ports at home - NIL.
Cord, elec.U.N. twin, low 0.0006 yds	-	-	-	50	100	-	-	Ports Abroad - 1 each D.S.
Lugs, cable, 0.2, 9/16-in. hole	-	-	-	2	4	-	-	controlling moving
Torches hand Mk.I	1	1	1	1	2	1	2	lights.
<u>Section X.1</u>								
Bearing Indicator gear, Receiver unit	1	-	-	-	-	-	-	1 each moving light.
" " " Transmitting unit (b)	-	-	-	-	-	-	-	
Boxes, reflector cleaning outfit filled	1	1	-	1	2	-	-	
Carbons, H.C.D.Neg: 16mm.dia Mk.I (c)	-	-	-	-	-	-	-	
" " Pos: 16mm.dia Mk.II (d)	-	-	-	-	-	-	-	
" " Bushes (e)	-	-	-	-	-	-	-	
Cases, lamp transport, "B"	-	-	1	-	-	-	-	
Cases, reflector, "H" Mk.I	-	-	1	-	1	-	-	
Frames, resistance, 200-amp.0.25-Ohm."A"	1	1	-	1	1	-	-	
Glass sectors, No.2	-	-	2	4	8	-	-	
Glasses, Arc. observation, Mk.I	-	-	1	1	2	-	-	
Glasses, framed, Arc. observation Mk.I	1	1	-	-	-	-	-	
Lamps, searchlight, H.C.D.90 cm. Mk.III	1	1	1	-	-	-	-	
Lamps, S.L., H.C.D. 90cm.Mk.III :-	-	-	-	-	-	-	-	
Electrodes (pairs) (e)	-	-	-	-	-	-	-	
Projectors Fortress 90 cm. Mk.V	1	-	-	1	2	-	-	
Projectors Fortress 90 cm. Mk.VI	-	1	-	-	-	-	-	
Reflectors, Parabola-ellipse, 90/42/16, Mk.I	-	-	-	-	-	-	-	
" " " " 90/42/30, Mk.I (f) 1	1	1	1	1	2	-	-	
" " " " 90/42/45, Mk.I	-	-	-	-	-	-	-	
" <b>Paraboloid</b> 90/42/Mk.I )	-	-	-	-	-	-	-	
Resistances substitutional "A"	1	1	-	-	-	-	-	
Stands, binocular, D.E.L. Mk.II (i)	-	-	-	-	-	-	-	
Switchboards, D.E.L. emplacement	1	1	-	-	-	-	-	
Switches, auto, searchlight, Mk.II	1	1	-	1	1	-	-	
Switches, motor directing, Mk.V <sup>2</sup> (or Mk.V <sup>3</sup> )(g)	1	-	-	-	-	-	-	
Switches elevating (g)	1	-	-	-	-	-	-	
Switches, motor directing,	-	-	-	-	-	-	-	
Mk.V -	-	-	-	-	-	-	-	
Spare parts sets "A" (h)	-	-	-	1	2	-	-	
Spare parts sets "B"	-	-	-	-	-	-	-	
<u>Section X.2</u>								
Lamps, elec. incand: G.F., B.C.	2	2	4	3	6	-	-	
100-volt, 32-c.p.	3	-	-	-	-	-	-	
Resistances, adjustable, 25-ohms	-	-	-	-	-	-	-	
<u>M.T. Section 1</u>								
Fire extinguishers, Tetrachloride type, with bracket, filled	-	-	-	-	-	1	-	





SUMMARY OF ORDINANCE EQUIPMENT FOR D.E.L's.

Designation	Emplacement Equipment Each D.E.L.			Additional Spares For each Fire Command or Group		Each Engine Room	Each D.S.	Remarks
	Mk. V Mov- ing	Mk. VI fixed	Spares for every 4 or less D.E.L's in each Fire Command	With 4 or less D.E.Ls.	With more than 5 D.E.Ls.			
<u>Section F.</u>								
Brushes, dusting	1	1	-	1	2	-	-	(a) 1 for each moving light plus 1 each D.S. for Ports Abroad. 2 each directing station controlling moving lights, 1 each directing station controlling fixed lights, for Ports at Home.
Files, second cut, half round, 4-in.	1	1	-	1	1	-	-	
" Handles, small	1	1	-	1	2	-	-	
Pliers, gas, 9-in.	1	1	-	1	1	-	-	
Pliers, sidecutting, 5-in.	1	1	-	1	1	-	-	(b) 1 each moving light (Projectors earlier than Mk. V).
Screwdrivers, cabinet, 6-in.	1	1	-	-	-	1	-	
Filters, oil	-	-	-	-	-	1	-	
Lamps, brazing, 1-pt.	-	-	-	-	-	1	-	(c) Ports at home - 15 per light. Ports abroad - 180 per light.
Vices, bench, parallel, cast 6-in.	-	-	-	-	-	-	-	
<u>Section K.</u>								
Lamps, kerosene No.1 or 3	1	1	-	-	-	2	-	(d) 10 x (c)
Clocks, bracket	-	-	-	-	-	1	-	(e) 1 per 100 Positive carbons.
<u>Section V.2</u>								
Watches G.S. (or A.T.P.)	-	-	-	-	-	-	1	(f) Type as ordered by War Office, to include at least 1 spare of each type in operation.
<u>Section V.6</u>								
Binoculars No.5	(a)	-	-	-	-	-	-	(g) 1 spare for every 4 or less moving lights.
<u>Section W.2</u>								
Batteries dry torch Mk.I	1	1	1	1	2	1	2	(h) 1 for each 2 moving lights.
" " " " (spare)	1	1	2	2	4	2	4	
Bulbs 3.5 volt P spare	1	1	4	4	8	4	8	
Cable, elec.J.single, low 0.002 yds	-	-	-	50	100	-	-	(i) Ports at home - NIL. Ports Abroad - 1 each D.S. controlling moving lights. 1 each moving light.
Cable, elec.M.low 0.15 yds	-	-	-	25	50	-	-	
Connectors 9/16-in Mk.I	-	-	-	2	4	-	-	
Cord, elec.U.N. twin, low 0.0006 yds	-	-	-	50	100	-	-	
Lugs, cable, 0.2, 9/16-in. hole	-	-	-	2	4	-	-	
Torches hand Mk.I	1	1	1	1	2	1	2	
<u>Section X.1</u>								
Bearing Indicator gear, Receiver unit	1	-	-	-	-	-	-	
" " " Transmitter unit (b)	-	-	-	-	-	-	-	
Boxes, reflector cleaning outfit filled	1	1	-	1	2	-	-	
Carbons, H.C.D.Neg: 16mm.dia Mk.I (c)	-	-	-	-	-	-	-	
" " Pos: 16mm.dia Mk.II (d)	-	-	-	-	-	-	-	
" " Bushes (e)	-	-	-	-	-	-	-	
Cases, lamp transport, "B"	-	-	1	-	-	-	-	
Cases, reflector, "H" Mk.I	-	-	1	-	-	1	-	
Frames, resistance, 200-amp.O.25-Ohm."A"	1	1	-	1	1	-	-	
Glass sectors, No.2	-	-	2	4	8	-	-	
Glasses, Arc. observation, Mk.I	-	-	1	1	2	-	-	
Glasses, framed, Arc. observation Mk.I	1	1	-	-	-	-	-	
Lamps, searchlight, H.C.D.90 cm. Mk.III	1	1	1	-	-	-	-	
Lamps, S.L., H.C.D. 90cm.Mk.III :-	-	-	-	-	-	-	-	
Electrodes (pairs) (e)	-	-	-	1	2	-	-	
Projectors Fortress 90 cm. Mk.V	1	-	-	-	-	-	-	
Projectors Fortress 90 cm. Mk.VI	-	1	-	-	-	-	-	
Reflectors, Parabola-ellipse, 90/42/16, Mk.I	-	-	-	-	-	-	-	
" " " " 90/42/30, Mk.I (f)	1	1	1	1	2	-	-	
" " " " 90/42/45, Mk.I	-	-	-	-	-	-	-	
" <b>Paraboloid</b> 90/42/Mk.I	-	-	-	-	-	-	-	
Resistances substitutional "A"	1	1	-	-	-	-	-	
Stands, binocular, D.E.L. Mk.II (i)	-	-	-	-	-	-	-	
Switchboards, D.E.L. emplacement	1	1	-	1	1	-	-	
Switches, auto, searchlight, Mk.II	1	1	-	-	-	-	-	
Switches, motor directing, Mk.V <sup>(g)</sup> (or Mk.V <sup>(g)</sup> )	1	-	-	-	-	-	-	
Switches elevating (g)	1	-	-	-	-	-	-	
Switches, motor directing, Mk.V -	-	-	-	-	-	-	-	
Spare parts sets "A" (h)	-	-	-	1	2	-	-	
Spare parts sets "B"	-	-	-	-	-	-	-	
<u>Section X.2</u>								
Lamps, elec. incand: G.F., B.C. 100-volt, 32-c.p.	2	2	4	3	6	-	-	
Resistances, adjustable, 25-ohms	3	-	-	-	-	-	-	
<u>M.T. Section 1</u>								
Fire extinguishers, Tetrachloride type, with bracket, filled	-	-	-	-	-	1	-	

SUMMARY OF ORDINANCE EQUIPMENT FOR D.E.L.'s.

Designation	Replacement Equipment Each D.E.L.			Additional Spares For each Fire Command or Group		Each Engine Room	Each D.S.	Remarks
	Mk. V Mov- ing	Mk. VI fixed	Spares for every 4 or less D.E.L.'s in each Fire Command	With 4 or less D.E.Ls.	With more than 5 D.E.Ls.			
<u>Section F.</u>								
Brushes, dusting	1	1	-	1	2	-	-	(a) 1 for each moving light plus 1
Files, second cut, half round, 4-in.	1	1	-	1	1	-	-	each D.S. for Ports Abroad. 2 each
"    Handles, small	1	1	-	1	1	-	-	directing station controlling moving
Pliers, gas, 9-in.	1	1	-	1	2	-	-	lights, 1 each directing station con-
Pliers, sidecutting, 5-in.	1	1	-	1	1	-	-	trolling fixed lights, for Ports
Screwdrivers, cabinet, 6-in.	1	1	-	1	1	-	-	at Home.
Filters, oil	-	-	-	-	-	1	-	(b) 1 each moving light (Projectors
Lamps, brazing, 1-pt.	-	-	-	-	-	1	-	earlier than Mk. V).
Vices, bench, parallel, cast 6-in.	-	-	-	-	-	1	-	(c) Ports at home - 15 per light.
<u>Section K.</u>								
Lamps, kerosene No.1 or 3	1	1	-	-	-	2	-	Ports abroad - 180 per light.
Clocks, bracket	-	-	-	-	-	1	-	(d) 10 x (c)
<u>Section V.2</u>								
Watches G.S. (or A.T.P.)	-	-	-	-	-	-	1	(e) 1 per 100 Positive carbons.
<u>Section V.6</u>								
Binoculars No.5	(a)	-	-	-	-	-	-	(f) Type as ordered by War Office, to
<u>Section W.2</u>								
Batteries dry torch Mk.I	1	1	1	1	2	1	2	include at least 1 spare of each
"    "    "    "    (spare)	1	1	2	2	4	2	4	type in operation.
Bulbs 3.5 volt P spare	1	1	4	4	8	4	8	(g) 1 spare for every 4 or less moving
Cable, elec.J.single, low 0.002 yds	-	-	-	50	100	-	-	lights.
Cable, elec.M.low 0.15 yds	-	-	-	25	50	-	-	(h) 1 for each 2 moving lights.
Connectors 9/16-in Mk.I	-	-	-	2	4	-	-	(i) Ports at home - NIL.
Cord, elec.U.N. twin, low 0.0006 yds	-	-	-	50	100	-	-	Ports Abroad - 1 each D.S.
Lugs, cable, 0.2, 9/16-in. hole	-	-	-	2	4	-	-	controlling moving
"    "    hand Mk.I	1	1	1	1	2	1	2	lights.
<u>Section X.1</u>								
Bearing Indicator gear, Receiver unit	1	-	-	-	-	-	-	1 each moving light.
"    "    Transmitting unit (b)	-	-	-	-	-	-	-	
Boxes, reflector cleaning outfit filled	1	1	-	1	2	-	-	
Carbons, H.C.D.Neg: 16mm.dia Mk.I (c)	-	-	-	-	-	-	-	
"    "    Pos: 16mm.dia Mk.II (d)	-	-	-	-	-	-	-	
"    "    Bushes (c)	-	-	-	-	-	-	-	
Cases, lamp transport, "B"	-	-	1	-	-	-	-	
Cases, reflector, "H" Mk.I	-	-	1	-	1	-	-	
Frames, resistance, 200-amp.0.25-Ohm."A"	1	1	-	1	1	-	-	
Glass sectors, No.2	-	-	2	4	8	-	-	
Glasses, Arc. observation, Mk.I	-	-	1	1	2	-	-	
Glasses, framed, Arc. observation Mk.I	1	1	-	-	-	-	-	
Lamps, searchlight, H.C.D.90 cm. Mk.III	1	1	1	-	-	-	-	
Lamps, S.L., H.C.D. 90cm.Mk.III :-	-	-	-	-	-	-	-	
Electrodes (pairs) (e)	-	-	-	-	-	-	-	
Projectors Fortress 90 cm. Mk.V	1	-	-	1	2	-	-	
Projectors Fortress 90 cm. Mk.VI	-	1	-	-	-	-	-	
Reflectors, Parabola-ellipse, 90/42/16, Mk.I)	-	-	-	-	-	-	-	
"    "    "    90/42/30, Mk.I) (f) 1	1	1	1	1	2	-	-	
"    "    "    90/42/45, Mk.I)	-	-	-	-	-	-	-	
"    "    "    Paraboloid 90/42/Mk.I )	-	-	-	-	-	-	-	
Resistances substitutional "A"	1	1	-	-	-	-	-	
Stands, binocular, D.E.L. Mk.II (i)	-	-	-	-	-	-	-	
Switchboards, D.E.L. emplacement	1	1	-	-	-	-	-	
Switches, auto, searchlight, Mk.II	1	1	-	1	1	-	-	
Switches, motor directing, Mk.V <sup>xx</sup> (or Mk.V <sup>xx</sup> )(g)	1	-	-	-	-	-	-	
Switches elevating (g)	1	-	-	-	-	-	-	
Switches, motor directing,	-	-	-	-	-	-	-	
Mk.V -	-	-	-	-	-	-	-	
Spare parts sets "A" (h)	-	-	-	1	2	-	-	
Spare parts sets "B"	-	-	-	-	-	-	-	
<u>Section X.2</u>								
Lamps, elec. incand: G.F.,B.C.	-	-	-	-	-	-	-	
100-volt, 32-c.p.	2	2	4	3	6	-	-	
Resistances, adjustable, 25-ohms	3	-	-	-	-	-	-	
<u>M.T. Section 1</u>								
extinguishers, Tetrachloride with bracket, filled	-	-	-	-	-	1	-	

No.—

Any further communication on this subject should be addressed to:—  
The Under-Secretary of State,  
The War Office  
(as opposite)  
and the following number quoted.



THE WAR OFFICE,

34

57/Engrs./3341 (PAIC)

6th February, 1941.

Sir,

Scales of D.E.L. Equipment for Fire Commands  
and Groups.

I am directed to inform you that it has been decided that Defence Electric Light Stores will be accounted for by Fire Commands and by Groups (in the case of isolated batteries, i.e. emergency batteries).

Equipment Regulations, Part 2, Section 10.J. will be amended in due course, showing spares as being held on a Fire Command or Group basis as opposed to a Port basis.

The scale of Equipment will be as laid down in the summary accompanying this letter.

The question of a scale of Spares for Maintenance is under consideration and, it is hoped, will shortly be issued to all concerned.

I am, Sir,

Your obedient Servant,

Yours

*B. P. Roberts*  
Director of A.A. and C.D.

All Commands

Home and Abroad (except Aldershot).

Copies to:— C.A.S.,  
C.S.E.L.  
C.I.E.S.S.  
O.S. Branches.

K.4546.

SEARCHLIGHT STORES RECEIVED IN FRENCH ISLANDS.

36

<u>Description.</u>	<u>No. Recd.</u>	<u>Case re-numbered</u>
Resistance Frame	1	1.
Resistance Frames	2 )	
Electrodes, Neg. Feed	64 )	
Electrodes, Pos. Feed	64 )	
Batteries, Dry Torch Mk. I	19 )-----	2.
Connectors, 9/16 Mk. I	2 )	
Lugs, Cable 0.2 9/16	2 )	
Switch, Elevating	3 )	
Bino. Facepieces	3 )	
Reflector Cases	4 )-----	3, 4,
Reflectors	4 )	5 & 6.
Switches, Auto S/T. Mk. II	3 )-----	7.
Switches, Motor Directing Mk. V	3 )	
Carbons, H.C.D. Pos. 16 mm. dia. Mk. II. 9" Long Patt. 8779	42 tins	8.
Carbons, H.C.D. Pos. 16 mm. dia. Mk. II. 9" Long. Patt. 8779	42 tins	9.
Carbons, H.C.D. Pos. 16 mm. dia. Mk. II. 9" Long. Patt. 8779	42 tins	10.
Carbons, H.C.D. Pos. 16 mm. dia. Mk. II. 9" Long. Patt. 8779	42 tins	11.
Carbons, H.C.D. Pos. 16 mm. dia. Mk. II. 9" Long. Patt. 8779	42 tins	12.
Carbons, H.C.D. Pos. 16 mm. dia. Mk. II. 9" Long. Patt. 8779	42 tins	13.
Classes, Trained Arc. Observ. (1 handle broken)	2 )	
Spare Parts Sets "A"	1 )	
Carbons, Neg. 19" Long, in boxes of 50	15 boxes )	
Bushes, Carbon	640 )-----	14.
Bulbs, 3.5 v.	22 )	
Cable, Electric "J" S.E. 0.002	50 yards )	
Cord, Electric, U.N. twin. low 0.0006	50 yards )	
Carbons, Pos	4 tins )	
Telephone Sets, 'H' Mk. II	4 )	
Generators, N.4711, Mag. type	2 )-----	15.
Concentrators 5 line C.D.	1 )	
Bells, Mag. No. 53A	4 )	
Resistance Frame	1 )	
Field Regulators (arrived in Eng. Cases)	3 )	
Motor Unit, 10-1 Ratio.	1 )	
Footplates	6 )-----	16.
Greaseguns	2 )	
Coupling Pieces	2 )	
Pieces, name unknown	2 )	
Glasses, Obs. Mk. I	2 -----	17.
Various Lamp Spares & adjusting tools		
Plumbago	3 tins	18.
Arc Lamp Case	1 -----	19.
Arc Lamp	1	

IN CLOTHING STORE.

Arc Lamps	2
Carbon Lamps, 100 V.	8
Glass Sectors No. 2	1

<u>Description.</u>	<u>No. Recd.</u>	<u>Case re-numbered.</u>
Drum Telephone Cable 'O' 4 CORE/40	800 yards	<i>In Drill Hall.</i> (In-Dockyard)
Generating Sets	3 only	(In Garage)
Tool Kits	3 only	" "
Binoculars, Prism No. 5 Mk. II x 7. No. 7815 with case		In custody of H.E. the Governor.
Binoculars, Prism No. 5 Mk. II x 7. No. 7891 with case		In custody of Capt. A. I. Fleuret.
Binoculars, Prism No. 5 Mk. II x 7. No. 7747 with case		Stored in Quartermaster's Office.
Fortress Projectors	2 only	(Drill Hall)

SEARCHLIGHT STORES SHORT RECEIVED.

Recd: Ballavia.

1	only	Watch, G.S. Mk. II. -	No.
3	"	Stands, Binocular D.E.L. Mk. II. -	No.
2	"	Switchboards, D.E.L. Emplacement. -	Yes
2	"	Bearing Indicator Gear :- Receiver Unit. -	Yes.
3	"	Boxes Reflector Cleaning Outfit Filled. -	Yes
1	"	Spare Parts Sets "B". -	No.
25	yrds	Cable, Electric "M" Medium 0.15.	Yes.
7	only	Torches, Hand Mk. I.	Yes.

In addition to the above, it is possible that certain other searchlight stores, together with invoices, have not arrived in the Colony. As one known instance I quote the electric cable to carry the power.

*lengths of cable required.*

Char point

BC post to Engine House	1072 feet
Engine House to height	187 feet
BC post to height	1259 "

Ordnance

BC post to Engine House	436 feet
Engine House to height	214 feet
BC Post to height	571 feet

DECODE.

38

TELEGRAM.

From His Excellency the Governor.

To Under Secretary of State for War.

Despatched: 25th September, 19 41. Time: .....

Received: .....19 Time: .....

Your telegram 16th January, No. 97408, Coast Defence Searchlights for Port William, Falklands. Following vital stores not yet received. Two only (2) Switchboards D E L emplacement. Two only (2) Bearing Indicator gear-receiver unit. Two only (2) spare parts sets "B".

Also suitable cable as follows: Charles Point Battery Light: Directing Station (DS) to Engine House (EH) three hundred and ninety yards (390). Engine House to Electric Light Emplacement (ELE) seventy yards (70). D.S. to E.L.E. four hundred and sixty yards (460).

Ordnance Point Battery Light: D.S. to E.H. one hundred and sixty yards (160) E.H. to E.L.E. seventy five yards (75). D.S. to E.L.E. two hundred and ten yards (210).

The following have not been received. One only (1) watch G.S. Mk. II (two are required); Three only (3) Stands Binocular D.E.L. Mk. II; Three only (3) boxes reflector cleaning outfit filled; Twenty five yards (25) cable electric "M" medium 0.15; Seven only (7) torches Mk. I.

Officer Commanding Troops informs me that he would prefer to have loan of necessary technician for installation.

Governor.

I.D.



DECODE.

39

TELEGRAM.

No. 2 From UNDER SECRETARY OF STATE FOR WAR

To HIS EXCELLENCY THE GOVERNOR.

Despatched : 22nd October, 19 41. Time : 12.15.

Received : 23rd October, 19 41. Time : 10.30.  
Red 38

97107 21/10 Your unnumbered 25/9 C A I B . First : switch boards and bearing indicator gear shipped via Capetwon for transshipment in s.s. "Baltavia".

Secondly: Cable under issue first opportunity.

Third : Instructions guide installation being prepared and availability of technician being investigated.

I.D.V. (15).

Troopers.

CONFIDENTIAL.

45

No. \_\_\_\_\_

MINUTE.

(It is requested that, in any reference to this minute, the above Number and the date may be quoted.)

27th October, 1941.

*From*

*To* O.C. Troops,

Major J.A. Woodgate,

Stanley,

Stanley, Falkland Islands.

Falkland Islands.

I have the honour to forward herewith proceedings of Court of Enquiry held today.

*W.A. Woodgate.*  
*Huyon*

PROCEEDINGS of a Court of Enquiry assembled  
at H.Qrs. at 10. am. 27th. October 1961 to  
enquire into & report upon

1. The history of Searchlight Stone & equipment  
received in Stanley in or about November 1960
2. The receipt (or non receipt) of and or checking  
of vouchers, & advice notes relating to such  
stone.
3. The Condition of various stones that have  
recently arrived in H.M.S. Ballavia.

The Court composed of.

Major J. A. Woodgate President  
Capt. P. J. Stuart M.A.S.  
Maj Lt. D. M. Pole Evans  
2nd Lt. S. R. Summers.

Having assembled proceeded to take evidence  
as follows

Lt. L. L. Aldridge stated.

When the first consignment of Stone arrived in  
November 1960 I attempted, <sup>Supervisor Ford, Etc: Dept and</sup> with <sup>MAJ</sup> General Foreman  
P.W.D. to check the contents of cases but owing to the  
shortage of information as to contents, this was in  
most cases, impossible. Following receipt of invoices  
by later mail a full check was made & I gave  
a list of shortages to the O.C. Troop.

With regard to Stone received from H.M.S. Ballavia  
of the 3 cases containing Enigma Boards, only one was

Appendix  
A

Received in fair condition. I submit detailed report on these stores.

The following items are still short,  $\frac{1}{2}$

3 Stands Government type I.

1 Clock bracket

1 Batch:

1 Spare part Set B.

L. H. Marriage  
G.M.

Mr. G. L. Challin states

I am the General Foreman of P.W.D. Falkland Is:  
In November 1940 certain apparatus were packed by P.I.C. on Dockyard <sup>deck</sup> and were transported by P.W.D. to the Lower Store. As the switchboards were urgently needed search was made for these by examining outside of cases, as no trace could be found. I with Mr. Brown unpacked each case & checked contents on the outside. There was no switchboard & one case was badly damaged. The reflectors were carried loose empty & the reflectors crated in straws & brought as deck cargo with the result that cases had become spotted with damp. The stores were all then sent except engines to Cape Pembroke Airbase after which they were out of my control. A drum of cable was received at the same time. I understood this was for the power circuit.

G. L. Challin.

Mr. Alexander Kerner Stalis :-

I am the Supervisor of Electrical & Telegraph Department of the Falkland Islands Government. In November 1940 I was asked by the Executive Engineer to check over certain stores which had been received for Seablights. From the invoices it was impossible to tell contents of cases I therefore opened them with Mr. Challen, checked contents & chalked this on side of case. No Switchboard was received or power cable. One case containing resistance was broken but contents were undamaged.

I saw the stores landed from H.M.S. Bellona the day after they were landed & the Switchboards were just loose in cases & not packed at all & all three were damaged in varying degree. Two volt meters were loose in the case & may be damaged when tested as also may the ammeters. Four fuse holders were smashed. The whole of the stores were packed in a disgraceful manner.

G. Mercer.

The Court having heard the evidence finds both regard to the stores received in November 1940 that they were received without any invoices or any detailed particulars of contents of each case, nor was there available a list of the standard stores that make the complete unit. Switchboards, cable & wiring diagrams were not received. The packing, with the exception of the reflections was generally poor.

The Court finds further that  
both regard to the stores landed from H.M.S.  
Ballara the whole of the damage is attributable  
to disgraceful packing & careless handling in transit

The Court submit the following statement as to why  
the Searchlights have not been sent sooner.

1. An integral part - i.e. Switchboard -  
(which could not be extemporised locally)  
was not received ~~with~~ with the first lot of  
stores, & also power cable. This was telegraphed  
for in November 1940 & arrived here October  
1941.

Mustafa Woodgat. President  
Major.

C. J. Secant, Capt.

W. Pole-Ewans, 2/Lt.

J. B. Summers 2/Lt

27. 10. 41.

"A"

9/10/41

(40)

SEARCHLIGHT STORES RECEIVED PER H.M.S. "BALTAZIA".

Contents.

- DON 10474
- 1 c/s ✓      2 Bearing Indicator Gear:- Receiving Units
- 3 Resistances, adjustable, 25 ohms.
- 
- 1 c/s ✓      3 Resistances, adjustable, 25 ohms.
- 
- 1 c/s ✓      Cable Boxes & Compound.
- 
- 1 c/s ✓      200 yards Cable, single, TRS, 003
- 
- 2 c/s ✓      Each containing 1 fire extinguisher & 1 bracket.
- 
- DON 10437
- 1 c/s ✓      25 Yards electric cable "M" Medium 0.15
- 7 Torches, hand Mk. 1.
- 
- DON 37330
- 1 c/s ✓      3 Boxes, reflector cleaning outfits.
- 
- DON 50258
- 1 c/s ✓      6 Helio or Lamp Stands
- 
- DON 67049
- 1 c/te ✓      2 D.E.L. Switchboards.      (On 1 switchboard 1 fuse holder and 1 tumbler switch are broken, but can be repaired locally. )
- 
- 1 c/s ✓      1 Engine Board, No. 5.      (1 fuse holder broken, local repair doubtful.)
- 
- 1 c/s ✓      1 Engine Board, No. 6.      (1 fuse holder broken, local repair doubtful.)
- 1 parallel switch broken, but can be repaired locally
- 1 tumbler switch broken but can be repaired locally.)
- 
- 1 c/s ✓      1 Engine Board, No. 7.      (1 fuse holder damaged, but is usable.
- 2 voltmeters damaged, local repair doubtful.
- 1 ammeter damaged, local repair doubtful.
- 
- 10 drums ✓      Electric Cable.

REMARKS.

Of the 3 cases containing Engine Boards, only 1 was received in fair condition. All three cases were devoid of any packing whatsoever, and the engine boards moved freely to and fro as the cases were being handled with the resultant damage to fuse holders, etc., as detailed. In case containing engine board No. 7, 2 voltmeters, together with supporting frame were loose

H.G.  
14/10/41

DECODE.

46.

TELEGRAM.

From His Excellency the Governor.

To The Under Secretary of State for War.

---

Despatched : 3rd November, 1941. Time : ...

Received : ... .. 19... Time : ...

Rec 39  
Your 97107 of 21/10. Three switchboards for Defence Electric  
Lights and two voltmeters received badly damaged. Please  
replace two only switchboards complete and two only voltmeters also  
one reflector received spotted by damp.

GOVERNOR.

I.D.V. (15).



DECODE.

TELEGRAM.

From Under Secretary of State for War.

To His Excellency the Governor.

Despatched: 6th November, 19 41. Time : 2058.

Received: 7th November, 19 41. Time : 1030.

50250. 6/11 Red. 46 Your Unnumbered cypher 3/11 C.A.I.B.

Confirm damaged switch boards are engineroom pieces  
repeat not CASL emplacement switchboards with contractor  
panel.

TROOPERS.

I.D.V. (15)

DECODE.

48.

TELEGRAM.

From His Excellency the Governor.

To Under Secretary of State for War.

---

Despatched: 7th November, 19 41. Time: ...

Received: ... .. 19 ... Time: ...

Ref. 47.

Your 50250 of 6/11 Damaged switch boards are engine room pieces.

GOVERNOR.

I.D.V. (15)

DECODE.

TELEGRAM.

No. 54. From UNDER SECRETARY OF STATE FOR WAR.

To HIS EXCELLENCY THE GOVERNOR.

Despatched : 3rd December, 19 41. Time : 0400

Received : 4th December, 19 41. Time : 1030

Red 46.

55669 3/12 F W 3. Your unnumbered cypher dated November 3rd.

1 Engine room switchboard for 3 generators and 2 lights with auxiliary panel under issue. This switchboard complete with 2 volt meters.

Do you require 2 additional volt meters.

I.D.V.(15).

TROOPERS.

50

DECODE.

TELEGRAM.

*From* HIS EXCELLENCY THE GOVERNOR.

*To* UNDER SECRETARY OF STATE FOR WAR.

*Despatched:* 6th December, 19 41. *Time:*.....

*Received:* ..... 19 *Time:*.....

Red 49

Your telegram 55669 3/12 F.W.3. additional voltmeters not required

GOVERNOR.

I.D.V. (15).

DECODE.

(51.)

TELEGRAM.

No. 250. From SECRETARY OF STATE FOR THE COLONIES.

To HIS EXCELLENCY THE GOVERNOR.

*Despatched :* 28th December, 19 41. *Time :* 1030.

*Received :* 29th December, 19 41. *Time :* 1030.

No. 138. Following from the War Office begins. No. 60481 CAIB cypher 27/12.  
Your unnumbered cypher 25/9.

1. All necessary stores under issue. Detailed instructions and hand-book to guide installation in transit under reference 57/engineer/3261 (CAIB) dated December 24th 1941.

2. Report when all stores in possession in order that Admiralty technician can be made available. ends.

SECRETARY OF STATE.

I.D.C.G.

DECODE.

TELEGRAM.

*From* HIS EXCELLENCY THE GOVERNOR.

*To* SECRETARY OF STATE FOR THE COLONIES.

*Despatched:* 31st December, 19 41. *Time:* ....

*Received:* ..... 19 *Time:* ....  
*Recd 51*

No. 159. Your telegram No. 138 following message for War Office from  
O.C. Troops begins:- Please forward as soon as possible instruction book  
on the arc lamp which has been supplied for the projector

GOVERNOR.

DECODE.

53

TELEGRAM.

No. 260. From SECRETARY OF STATE FOR THE COLONIES.

To HIS EXCELLENCY THE GOVERNOR.

---

*Despatched:* 19th January, 19 42. *Time:* 1652.

*Received:* 20th January, 19 42. *Time:* 1030.

No. 11. Secret. Following from the War Office No. 65159 cypher Q (M) 3C/18/3

One bundle of projectors fortress parts and 3 cases switchboards total measurement  $5\frac{1}{4}$  tons loaded Lombardy for the Falkland Islands via Montevideo.

Agreed. Message ends.

I.D.C.O.

SECRETARY OF STATE.

DECODE.

TELEGRAM.

54

No. 72.

*From* UNDER SECRETARY OF STATE FOR WAR.

*To* HIS EXCELLENCY THE GOVERNOR.

*Despatched:* 6th February, 19 42. *Time:* 0020.

*Received:* 6th February, 19 42. *Time:* 1030.

UKC 3832/6.

Following Royal Engineers stores (from Troopers to the Falkland Islands No. 68708 repeat 68708 F.W.5 dated February 4th our 65159 dated January 18th) shipped. D.F.W.D. E P/15/ electrical/ 1402/ S D/57/ Engineers/ 3262, 3 cases switchboards.

TROOPERS.

Recd 53



Copy to Hon Col. Sec

(55)

FALKLAND INSULARUM DEFENSORES FIDELES.

Headquarters,  
F.I.D.F.,  
Stanley.

23.2.42.

A. Mercer, Esq.,  
S/ E. & T.,  
Falkland Islands.

Dear Mr. Mercer,

Last night was one I shall long remember for it recorded a very important phase in the history of the Coastal Defences of Port William and Stanley.

I refer to the first full test of the Defence Electric Lights.

The bringing into actual and co-ordinated working order of the long owned medley of machinery and unfamiliar spare parts is, in no small measure, due to the very keen interest you and your staff have displayed in the problem of assembly and the long hours of hard work you have put in so ungrudgingly.

You have not hesitated to respond to any request I have made and the result is that something of vital importance to the defences has been achieved.

Will you please accept my sincere thanks and pass them on to those who have rendered you such valuable assistance.

Yours Sincerely,

*C. D. G.*

Colonel,  
O.C. Troops,  
Falkland Islands.

Headquarters,  
F.I.D.F.  
23.2.42.

To Hon. Col. Sec.  
From O.C. Troops.

Would you please cause a message to be sent to proper authority in England with effect that both the Coast Defence Electric Lights are erected and in full working order, one at Charles Point Battery (Examination Battery) and one at Ordnance Point Battery.

*C. Donald Mackenzie*

Colonel,  
O.C. Troops,  
Falkland Islands.

P.S. I think you have the file in which this information is added for C.S.D. etc

57

DECODE.

TELEGRAM.

From HIS EXCELLENCY THE GOVERNOR.

To SECRETARY OF STATE FOR THE COLONIES.

Despatched : 25th February, 19 42. Time : .....

Received : .....19 Time : .....

Red 51.

Red 51

No. 35. Your telegram No. 138 following for War Office begins Your telegram No. 60481 CAIB 27/12 both Coast Defence Electric Lights erected and in full working order; one at Charles Point (Examination Battery) and one at Ordnance Point. Technician not now required. ends.

GOVERNOR.

I. E. C. C.

No. \_\_\_\_\_  
(It is requested that, in any reference to this minute, the above Number and the date may be quoted).



MINUTE.

23rd June, 1947.

From The Quartermaster,  
F. I. Defence Force,  
Stanley, Falkland Islands.

To The Officer Commanding,  
F. I. Defence Force,  
STANLEY.

Disposal of S/L. Engines etc.

I have the honour to request that the War Office may be approached through the Secretary of State for the Colonies with a view to disposing of the 2 Searchlight Engines/at present being maintained by the Defence Force. The third engine, ~~one~~ taken over by the Imperial Force stationed here during the war, ~~is~~ is now in an unserviceable condition and is not considered our liability.

2. My reason for raising this point is that the Engine Houses are continually being broken into and are gradually disappearing piece by piece and at a recent inspection it was observed that movable parts of the engines themselves are being stolen.

*Bond*, Lieut.,  
Quartermaster,  
F. I. D. F.

Honourable Colonial Secretary

*I agree with the Q.M.s proposal entirely & would be grateful if h.a. could be taken pl.*

*W. O.C. F.I.D.F.*  
23. VI. 47.

*M.P. - bc v Special*  
*W.B.*  
*23/6*

SAVING TELEGRAM.

*From:* The Officer Administering the Government of the Falkland Islands.

*To:* The Secretary of State for the Colonies.

*Date:* 27th June, 1947.

No. 24.

SAVING.

Defence Electric Lights.

Two Defence Electric Lights and three 22 K.W. generators were sent by War Office for installation at Fort William in 1942. One set is situated at Charles Point and the other at Ordnance Point. The spare engine was X| handed over to Garrison and following outbreak fire at Main Camp must now be written off. Location of lights makes care and maintenance most difficult indeed almost impossible and smaller parts are now being stolen. In these circumstances I would be grateful if you would obtain War Office approval for withdrawing equipment to Stanley with a view to storing Defence Electric Lights and selling generators at best price obtainable locally.

GOVERNOR.

see 67

DECODE.

TELEGRAM SENT.

From GOVERNOR to SECRETARY OF STATE.

Despatched: 15. 9. 47 Time: 14.45. Received: ..... Time:.....

66 No. 517. My telegram No. 34 Saving of 27th June. Defence  
Electric Lights.

Unless I hear to contrary propose withdraw equipment to Stanley.

Reply at 68.

GOVERNOR.

G.T.C.

LJH.

DECODE.

No. S53.

TELEGRAM RECEIVED.

From SECRETARY OF STATE to GOVERNOR.

Despatched: 19. 9. 47 Time: 20.45 Received: 20. 9. 47 Time: 09.00.

67 No. 340. Your telegram No. 517. Defence Electric Lights.

War Office agree to removal of equipment to Port Stanley but not repeat not at present to sale of generators. This matter still under consideration.

See 71

SECRETARY OF STATE.

G. T. C.

LJH.

DECODE.

TELEGRAM SENT.

From GOVERNOR to SECRETARY OF STATE.

Despatched: 23. 9. 47 Time: 11.15 Received: ..... Time: .....

68 No. 546. Your telegram No. 340. Defence Electric Lights.

I should be grateful if War Office could be asked for loan of generators to this Government subject to maintenance pending decision sale.

See 72

GOVERNOR.

G. T. C.

LJH.



S/44140

72

DECODE.

No. 12.

TELEGRAM RECEIVED.

From SECRETARY OF STATE to GOVERNOR.

Despatched: 29. 9. 47 Time: 22.30. Received: 30.9.47 Time: 09.00.

71 Unnumbered. Your telegram No. 546. Please state whether one or more generator is intended.

SECRETARY OF STATE.

G. T. C.

Reply at 75

LJH.

DECODE.

TELEGRAM SENT.

From GOVERNOR to SECRETARY OF STATE.

Despatched : 1. 10. 47      Time : 12.30      Received : ..... Time : .....

72      No. 562.      Your telegram 29th September Unnumbered.      Both generators.

GOVERNOR.

G.T.C.

LJH.

S/44/40 (copy filed in <sup>in</sup> 0492/A "G. I. w/t. Str.")  
Equipment Stores

78

DECODE.

TELEGRAM SENT.

From GOVERNOR to SECRETARY OF STATE.

Despatched: 17.10.47. Time: 1845 Received: Time:

IMMEDIATE. No. 607 My telegram No. 562. War Department Generators. Grateful very early reply as provision will affect my arrangements on departure of Naval Wireless detachment 1st January. (2) Please instruct Crown Agents to go ahead with but not to complete purchase of Motor Alternator mentioned in Paragraph 5 my telegram Important No. 527 pending War Department's reply to request for loan of generators. (3) If War Department reply favourable imperative that alternator be shipped in F.I.D.S. vessel.

Governor

65 170/46  
("G. I. w/t. Str.")

G. T. C.  
TB.

Reply at 80

See 83

80  
DECODE.

No. 572.

TELEGRAM RECEIVED.

From SECRETARY OF STATE to GOVERNOR.

Despatched: 2. 11. 47 Time: 14.50 Received: 3.11.47 Time: 09.00.

78 No. 401. Your telegram No. 607. War Department generators.

War Office agrees to loan of generators pending decision disposal.

See 83

SECRETARY OF STATE.

G. T. C.

LJH.

p.p. (Intld) A.B.M.  
3/11/47.

(Copy filed <sup>81</sup> in 0492/A-33. W/T ~~Stm~~)

83

DECODE.

TELEGRAM SENT.

From GOVERNOR to SECRETARY OF STATE.

Despatched: 4. 11. 47      Time: 15.30      Received: ..... Time: .....

80 No. 652. Your telegram No. 401. Grateful you confirm that action in

78 paragraph 3 of my telegram No. 607 is being taken.

GOVERNOR.

G.T.C.

Drafted by H.B.

L.J.H.

Original filed in 0492 "Falkland Islands Wireless Telegraph Station"

DECODE.

*Copy filed in 0428 "Power Supply - Stanley"*

No. 510.

TELEGRAM RECEIVED.

From SECRETARY OF STATE to GOVERNOR.

Despatched : 10. 11. 47 Time : 15.40 Received : 11. 11. 47 Time : 09.00.

65 in 170/46. No. 411. Your telegram No. 527 electric plant. Paragraph 5. Reference to alternator not understood as paragraph 2 your telegram No. 607 mentions generators. Please clarify paragraph 2 527 reference input of 100 D.W.

83

65 in 170/46.

2. Admiralty agreed loan of Blackstone.

SECRETARY OF STATE.

S.T.C.

LMH.

# Falkland Islands

240361

DESPATCH  
NO. 66

S/44/40

Date 12 NOV 1947

89

Transmitted with the Compliments of the Secretary of State, for  
the Governor's information.

~~the Governor's consideration.~~  
observations.

Reference:- Secretary of State's

Governor's

} ~~Telegram No.~~  
} ~~Despatch No.~~  
} ~~Savingram No.~~  
} of

Date	Nature of Communication
89. 31 <sup>st</sup> Oct 1947	From War Office.  Copy

COPY

THE WAR OFFICE,  
London, S.W.1.

078/171 (R.A.2)

31st October, 1947.

The Under Secretary of State,  
Colonial Office,  
Downing Street,  
London, S.W.1.

Sir,

I am directed to acknowledge receipt of your letter 94036/47 of 6th October, 1947, and to state that the temporary loan of the two 22 Kw Generators to the Falkland Islands is agreed.

This loan will be subject to the normal charges and will terminate when a firm decision on the Scales of Coast Artillery is reached.

You will be informed, when the Scales of Coast Artillery Defences have been decided, whether the two 22 Kw Generators will be available for sale or returned.

I am,

Sir,

Your obedient Servant,

(Sgd.) R.R. MOSSOP

Capt. G.S.

for Major-General,  
Director of Royal Artillery.



OS

There are ~~two~~ two (2) 20 k/w  
 generators at W/T station now  
 surplus to our requirements. I  
 suggest these be put out to  
 tender forthwith (they should be  
 useful to farmers) - purchaser to  
 receive ex site. We can't get  
 on with the accommodation for the  
 new Broadcasting transmitters until  
 they are out of the way.

SPT: Per ofh levels, MC 10 VIII  
 11/8

DECODE.

TELEGRAM SENT.

From GOVERNOR to SECRETARY OF STATE

Despatched: 24.8.53 Time: 1130 Received: ..... Time: .....

89  
No 155. Your Despatch No 66/1947. Coast Artillery  
Generators.

2. Government has no further use for these  
generators. Grateful War Office instructions regarding  
disposal be sought.

3. Suggest reasonable price would be obtained  
locally as generators would be useful for lighting  
farm settlements.

GOVERNOR

Reply 99

DECODE.

TELEGRAM SENT.

98

From GOVERNOR to SECRETARY OF STATE

Despatched: 25.9.53      Time: 0900      Received: .....      Time: .....

92

No 175P. My telegram No 155. Generators.

Grateful learn position.

GOVERNOR

Reply at 99.

DECODE.

TELEGRAM SENT.

From SECRETARY OF STATE to GOVERNOR

Despatched: 6.10.53. Time: 1415. Received: 7.10.53. Time: 0845

A.

92 No. 134. Your telegram 155. Coast Artillery Generators. No objection to local disposal at reasonable price para 2 you will no doubt arrange for Crown Agents to pay proceeds to War Office.

SECEP.

B.

S.P.T.

If you supply full particulars we will advertise & pull you in on the Tender Board.

(Intld.)

J.B.

7. 10.

Reply at 119.

PUBLIC NOTICE.

Tenders are invited for the purchase singly or as a whole of the following items of lighting plant ex the Government W/T Station:-

- Item 1. One 20-K.W. Dorman Diesel 4-cylinder engine direct coupled to a three-phase 230-volt 50-cycle 4-wire alternator, complete with fuel tank, water tank and switchboard. Suitable for lighting at 230 or 440 volts. Engine is in perfect running order.
- Item 2. One Dorman Diesel 4-cylinder engine direct coupled to a 100-volt 22-K.W. direct current dynamo. Complete with fuel tank and switchboard. Engine is in perfect running order.
- Item 3. Two spare 100-volt 22-K.W. dynamos.
- Item 4. A quantity of engine spares.

Government does not bind itself to accept the highest or any tender.

Tenders, addressed to the Chairman, Tender Board, Secretariat, should be handed in before noon on Saturday the 31st October, 1953.

Colonial Secretary's Office,  
STANLEY.

acs

17th October, 1953.

119

DECODE.

TELEGRAM SENT.

From GOVERNOR to SECRETARY OF STATE

Despatched: 17. 12. 55      Time: 1112      Received: ... .. Time: ....

99

No. 250. Your telegram No. 154.      Coast Artillery Generators.

Regret sale advertisement produced no offers.      Grateful War  
office be advised and their further disposal instructions be sought.

GOVERNOR.

Reply 129

G.T.C.  
CGG

DECODE.

TELEGRAM SENT.

129

From SECRETARY OF STATE to GOVERNOR

Despatched: 6.4.54 Time: 1425 Received: 6.4.54 Time: 1430

119

No 73. Your telegram No 250A. Coast Artillery Generator War Dept. prepared to abandon in situ. Should buyer appear at later date local Government may sell and proceeds should be remitted to Crown Agents for credit of War Department.

SECRETARY OF STATE

BUF  
(Intld) C.C.

P/L.  
SM

F. I. ref: 5/44/40.

130

C. O. ref:

SAVING TELEGRAM.

*From:* The Officer Administering the Government of the Falkland Islands.

*To:* The Secretary of State for the Colonies.

*Date:* 9th April, 1954.

No. 67. SAVING. COIANY.

129 Your telegram No. 75. Coast Artillery Generators.

Government could use these generators as spares for the engine of a compressor recently purchased by the Public Works Department and is prepared to offer £50 for the two generators. Glad to learn if War Department wish to accept this offer.

GOVERNOR.

See Reply 131



DECODE.

131

TELEGRAM SENT.

From SECRETARY OF STATE to GOVERNOR

Despatched: 27.5.54

Time: 1227

Received: 27.5.54 Time: 1430

130

No 104. Your No 67 Saving Colony. Coast Artillery  
Generators. War Office accept offer of 250.

SECRETARY OF STATE

BUF  
(Intld)C.C.

2/L.

S/44/40

... to: Treasury, Audit.

136

31st May,

54.

Gentlemen,

I am directed to request you to pay to the War Office the sum of £50 for 2 22kw. Generators purchased by this Government. The amount should be debited to the Colony's General Account.

I am,  
Gentlemen,  
Your obedient servant,

(Sgd) C. Campbell

COLONIAL SECRETARY.

The Crown Agents for Oversea Governments & Administrations,  
4, Millbank,  
LONDON, S.W. 1.

ACC 12?  
Does S.W. Know? 134  
S.P.T.

(9ntld) C.C.  
1/6/54.

VP