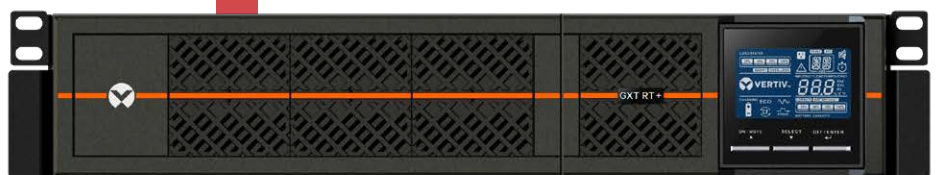
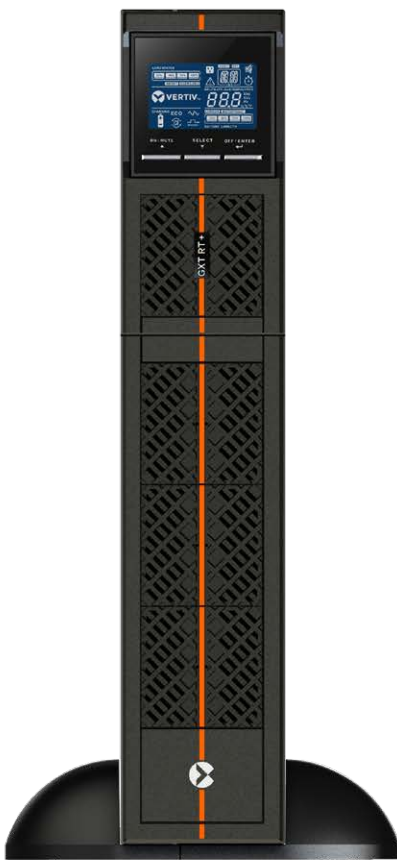




Vertiv™ Liebert® GXT RT+ UPS

1000 - 3000 VA 230 V

Essential, Affordable UPS for
High Performance Protection



Essential and Affordable Uninterruptible Power Supply (UPS) for High Performance Protection

The Vertiv™ Liebert® GXT RT+ UPS is an online double conversion solution which offers power protection in an affordable, efficient system with deployment and operation flexibility.

The high 0.9 power factor of the single-phase Liebert GXT RT+ enables continuous, reliable power to more connected devices from a wide range of input voltages while being energy efficient and, delivering maximum value.

The ECO mode of operation for this already affordable UPS also drives energy cost savings for a compelling total cost of ownership (TCO).

Being able to mount the Liebert GXT RT+ in a rack or tower is a convenience that adds to the value story as does the capability of the UPS to utilize up to six connected external battery cabinets for scalable runtimes.

In addition to the extended runtime, having multiple monitoring options makes this compact UPS ideal for delivering best-in-class power protection to equipment deployed at the edge of networks or in space-constrained facilities.

What's in the box?

- UPS
- Rack Mounting Kit
- USB Cable
- Quick Installation Guide
- Safety Instructions
- Input and Output Power Cables (Based on Power Rating)
- Plastic Tower Mounting Feet
- Rack Ears, Screws and Hardware

Liebert GXT RT+ Features

- Online technology with two stages of power conversion
- Output power factor higher than majority of comparable competitor models
- Flexible rack/tower form factor
- External battery cabinet compatibility
- User-friendly liquid crystal display (LCD)
- High efficiency ECO mode
- Smart battery charger design
- Wide input voltage operation (120-300V AC)



Vertiv™ Liebert® GXT RT+ UPS Features and Benefits



Compact, flexible form factor

Option of rack or tower mounting supports simplified UPS selection and deployment.



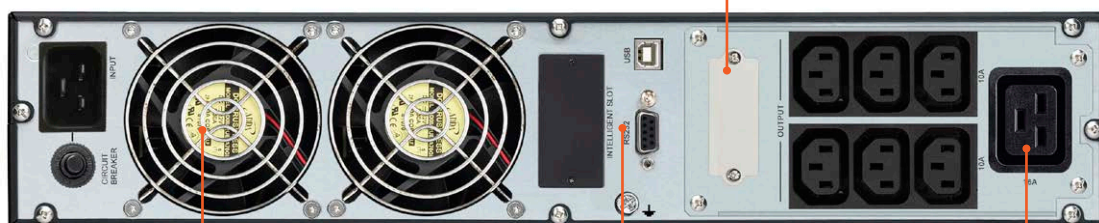
External battery cabinet capability

Connected modules enable scalable runtime during failure of main utility power.



User-friendly interface

Intuitive LCD provides complete UPS status and configuration information at a glance.



High efficiency ECO mode

Configurable operation mode for up to 95% efficiency helps to achieve energy savings and a lower TCO.



Monitoring compatibility

Network interface or serial connections enable remote access to UPS for power consumption monitoring and configuration of alert notification parameters.



High power factor (0.9)

More usable power enables more connected loads for space and cost savings.

Note: Front panel is the same for all power ratings while rear panels will vary. Shown here is a 3 kVA model.

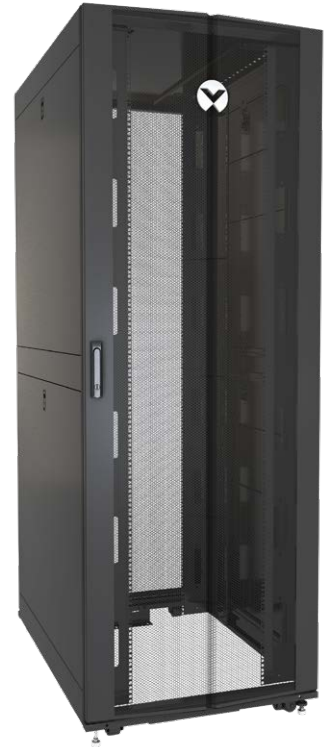
Accessories

Vertiv™ VR Rack

Internal, welded frame with repetitive hold pattern delivers high load bearing capacity and additional mounting locations in support of a wide variety of equipment including pre-installed Vertiv Geist rack power distribution units (rPDUs).

Vertiv™ Geist™ rPDUs

Rack-, wall-, or floor-mounted units that can include NEMA, IEC, and hardwired inputs reliably distribute power to a rack while keeping power cords organized in a dynamic data center environment.



Optional Connectivity Cards

Webcards/SNMP devices enable direct connection to the internet and use of a standard web browser for power monitoring and management including controlled shutdown for multiple computer systems. Volt free contact (VFC) cards are available for applications requiring this type of monitoring.



External Battery Modules

Modules connected to new or existing deployments ensure reliable power and protection and enable scalable runtime for support during extended power outage situations.



Liebert® MicroPOD Maintenance Bypass

A 2U rack-mounted installation, available in several receptacle combinations, allows manual transfer of connected equipment to utility power ensuring network availability and business continuity during scheduled service or UPS replacement.



Technical Specifications

	GXTRT-1000IRT2UXL	GXTRT-1500IRT2UXL	GXTRT-2000IRT2UXL	GXTRT-3000IRT2UXL
Ratings (VA/W)	1000/900	1500/1350	2000/1800	3000/2700
Dimensions, Millimeters				
Unit W x D x H	438 x 310 x 88	438 x 462 x 88	438 x 462 x 88	438 x 632 x 88
Weight, Kilograms				
Unit	11	14.5	18.2	27.6
Input AC Parameters*				
Nominal Voltage	230 VAC	230 VAC	230 VAC	230 VAC
Range	120-300 VAC	120-300 VAC	120-300 VAC	120-300 VAC
Frequency	40-70 Hz	40-70 Hz	40-70 Hz	40-70 Hz
Input Power connector	IEC60320 C14	IEC60320 C14	IEC60320 C14	IEC60320 C20
Output AC Parameters				
Output Receptacles	IEC60320 C13 x 6	IEC60320 C13 x 6	IEC60320 C13 x 6	IEC60320 C13 x 6 IEC60320 C19 x1
Output Voltage & Regulation (230V Typical, User Selectable)	220/230/240 VAC ±1%	220/230/240 VAC ±1%	220/230/240 VAC ±1%	220/230/240 VAC ±1%
Waveform	Sine wave	Sine wave	Sine wave	Sine wave
Utility (AC) Mode Overload	<130% for 30 seconds <150% for 3 seconds	<130% for 30 seconds <150% for 3 seconds	<130% for 30 seconds <150% for 3 seconds	<130% for 30 seconds <150% for 3 seconds
Battery				
Type	12V, 9 Ah valve-regulated, non-spillable, lead acid	12V, 9 Ah valve-regulated, non-spillable, lead acid	12V, 9 Ah valve-regulated, non-spillable, lead acid	12V, 9 Ah valve-regulated, non-spillable, lead acid
Environmental Requirements				
Operating Temperature, °C (°F)	0 to 40 (32 to 104)	0 to 40 (32 to 104)	0 to 40 (32 to 104)	0 to 40 (32 to 104)
Storage Temperature, °C (°F)	-20 to 50 (-4 to 122)	-20 to 50 (-4 to 122)	-20 to 50 (-4 to 122)	-20 to 50 (-4 to 122)
Relative Humidity	10-90% non-condensing	10-90% non-condensing	10-90% non-condensing	10-90% non-condensing
Operating Elevation	<2,000m	<2,000m	<2,000m	<2,000m
Noise Level	55 dBA max @ 1m	55 dBA max @ 1m	55 dBA max @ 1m	55 dBA max @ 1m
Agency				
Compliance	CE, CB report	CE, CB report	CE, CB report	CE, CB report
Safety	IEC/EN 62040-1: 2014	IEC/EN 62040-1: 2014	IEC/EN 62040-1: 2014	IEC/EN 62040-1: 2014
Electromagnetic Interference (EMI)	IEC/EN 62040-2: 2006 +AC:2006 Class A	IEC/EN 62040-2: 2006 +AC:2006 Class A	IEC/EN 62040-2: 2006 +AC:2006 Class A	IEC/EN 62040-2: 2006 +AC:2006 Class A
Surge Immunity	EN 61000-4-5: 2005 Class 2 L-N, Class 3 L-G	EN 61000-4-5: 2005 Class 2 L-N, Class 3 L-G	EN 61000-4-5: 2005 Class 2 L-N, Class 3 L-G	EN 61000-4-5: 2005 Class 2 L-N, Class 3 L-G
Transportation	ISTA 2A	ISTA 2A	ISTA 2A	ISTA 2A
Warranty				
Warranty	2 years	2 years	2 years	2 years

*Note: Specific conditions or power derating applies.

Battery Runtime Table

Type	GXTRT-EBC24VRT2U	GXTRT-EBC36VRT2U	GXTRT-EBC48VRT2U	GXTRT-EBC72VRT2U
Internal Battery Only (70-100% Load)	3 minutes	3.2 minutes	3.2 minutes	3.3 minutes
Internal Battery Only (50% Load)	9 minutes	9 minutes	9 minutes	10.5 minutes
+1 External Battery Cabinet (70-100% Load)	3.5 minutes	3.5 minutes	3.5 minutes	3.5 minutes
+1 External Battery Cabinet (50% Load)	38 minutes	38 minutes	39 minutes	42 minutes
+3 External Battery Cabinet (70-100% Load)	3.5 minutes	3.5 minutes	3.5 minutes	3.5 minutes
+3 External Battery Cabinet (50% Load)	103 minutes	106 minutes	111 minutes	115 minutes
+6 External Battery Cabinet (70-100% Load)	3.5 minutes	3.5 minutes	3.5 minutes	3.5 minutes
+6 External Battery Cabinet (50% Load)	213 minutes	215 minutes	225 minutes	234 minutes

Please check runtime tables in user guide for more details.

External Battery Cabinets

	GXTRT-EBC24VRT2U	GXTRT-EBC36VRT2U	GXTRT-EBC48VRT2U	GXTRT-EBC72VRT2U
Unit W x D x H	438 x 410 x 88	438 x 410 x 88	438 x 510 x 88	438 x 630 x 88
Weight	12.5	17.2	23.2	41.5
Internal Batteries	2 x 2 x 12 V x 9 Ah	2 x 3 x 12 V x 9 Ah	2 x 4 x 12 V x 9 Ah	2 x 6 x 12 V x 9 Ah
Compliance	CE	CE	CE	CE

Monitoring Cards

Network Communications

LI3800B020	Intellislot web card for SNMP and web management
LI3800B010	Voltage Free Contacts (VFC - dry contacts) card

Key Applications



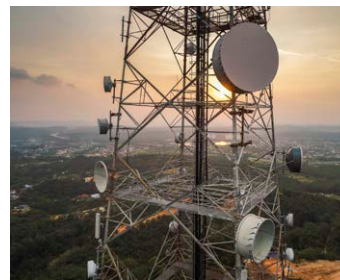
IT

- Servers
- Networking equipment
- Data storage



Finance

- Branch offices
- Closed-circuit televisions and data protection
- ATMs



Telecom

- 5G mobile stations
- Access and “last mile”
- Small control rooms



Industrial

- Manufacturing sites
- Control equipment and programmable logic controllers (PLCs)
- Data and networking equipment



Education

- Networking closets
- Networking equipment
- Office protection



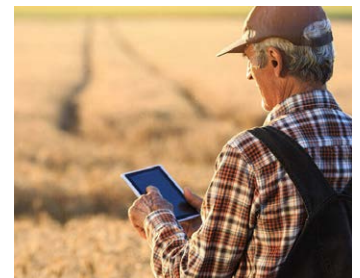
Government

- Distributed offices
- Closed-circuit television (CCTV) and data protection
- Small server and storage rooms



Retail

- Several point of sale systems
- Networking and wiring closets
- Security and voice over internet protocol (VoIP) telephony



Edge

- Distributed cloud services
- Content providers
- Sensors and data stations

Power Emergency: Comprehensive Service Support for Critical Systems

Providing more than the standard warranty and extension program, this five-year protection program is valid for single-phase UPS units 3 kVA or smaller. Purchased only at the point of sale, the program includes:

- **Advance replacement of faulty unit** with unit shipped within eight working hours of incident ticket acknowledgement meaning a maximum of two business days after claim
- **100% coverage of electronic parts and failed batteries** excluding battery misuse and/or reduced autonomy
- **Free shipping** from the following European countries: Austria, Belgium, Croatia, Czech Republic, France, Germany, Ireland, Italy, Luxemburg, Poland, Portugal, Slovakia, Spain, Sweden, Switzerland, The Netherlands, Turkey, and United Kingdom
- **24x7 access** to professional helpline

Key Benefits:

- Reduces the worry about critical equipment downtime
- Ensures rapid recovery in the event of failure (within 24-48 hours)

Power Emergency

Technical Support Hotline	24x7
Parts Included	✓
Response Time	✓ 8 Working Hours
Contract Duration	5 Years (10 with Renewal)



OUR PRESENCE

GLOBAL PRESENCE

Manuf. and Assembly Locations **28**
 Service Centers **250+**
 Service Field Engineers **2,650+**
 Technical Support/Response **300+**
 Customer Experience Centers/Labs **16**



US AND CANADA

Manuf. and Assembly Locations **13**
 Service Centers **100+**
 Service Field Engineers **850+**
 Technical Support/Response **120+**
 Customer Experience Centers/Labs **4**



LATIN AMERICA

Manuf. and Assembly Locations **1**
 Service Centers **20+**
 Service Field Engineers **240+**
 Technical Support/Response **20+**
 Customer Experience Centers/Labs **2**



EUROPE, MIDDLE EAST AND AFRICA

Manuf. and Assembly Locations **9**
 Service Centers **70+**
 Service Field Engineers **590+**
 Technical Support/Response **90+**
 Customer Experience Centers/Labs **5**



ASIA PACIFIC

Manuf. and Assembly Locations **5**
 Service Centers **60+**
 Service Field Engineers **970+**
 Technical Support/Response **80+**
 Customer Experience Centers/Labs **5**

