

# ISOLATED PRODUCTS GUIDE

Designed for Applications in:

» CHARGING  
STATIONS



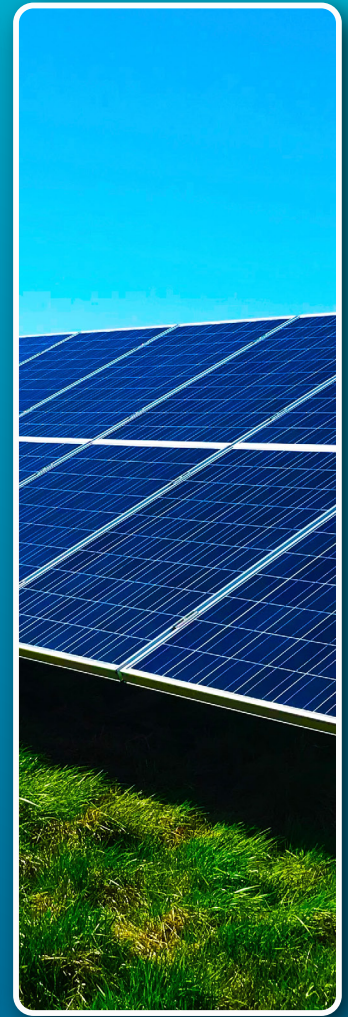
» ENERGY  
STORAGE



» TRACTION  
INVERTERS &  
ONBOARD  
CHARGERS



» SOLAR  
INVERTERS



## DUAL-CHANNEL ISOLATED GATE DRIVERS

Family	Description	Package	Applications
<b>MP18831</b> <b>MPQ18831*</b>	Dual-Input HB Isolated Gate Driver	SOIC-16 WB	Server PSUs Solar Inverters
<b>MP18851</b> <b>MPQ18851*</b>	Dual Independent Input Isolated Gate Driver	SOIC-16 NB SOIC-14 WB LGA-13 (5mmx5mm)	Energy Storage DC Fast Charging Stations Traction Inverters Onboard Chargers
<b>MP18871</b> <b>MPQ18871*</b>	PWM Input HB Isolated Gate Driver		

## SINGLE-CHANNEL ISOLATED GATE DRIVERS

Family	Description	Package	Applications
<b>MP18811</b> <b>MPQ18811*</b>	Single-Channel Isolated Gate Driver	SOIC-8 WB SOIC-8 NB	Traction Inverters PTC Heaters Onboard Chargers

\*MPQ188xx parts are available in AEC-Q100 Grade 1

## ISOLATED POWER – GATE DRIVER BIAS SUPPLIES

Family	Description	Package	Applications
<b>MPQ18913</b>	6W, 30V LLC Gate Driver Power Supply, AEC-Q100 Qualified	QFN-10 (2mmx2.5mm)	Traction Inverters & Onboard Chargers SiC/IGBT Gate Driver Bias DC Fast Charging Stations
<b>MID1W2424</b>	1W, 24V <sub>IN</sub> Power Module with Integrated Transformer, AEC-Q100 Qualified	SOIC-16 WB	EV Traction Inverters EV Onboard Chargers DC Fast Charging Stations
<b>MID6W2424</b>	6W, 24V <sub>IN</sub> Power Module with Integrated Transformer	LGA-6 (10mmx10mm)	SiC/IGBT Gate Driver Bias DC Fast Charging Stations

## GATE DRIVER POWER SUPPLY – PCB FOOTPRINT COMPARISON

