



The Wool Shed Herring Girl Wrap

THIS SUBTLE yet striking wrap uses a variety of traditional gansley patterns, and is made up of knitted squares and triangles, embroidered together using herringbone stitch and completed with a fringing. It was created for *The Knitter* by The Wool Shed, using its Flying Flock yarn. This is produced from the fleeces of Shetland and Hebridean sheep which belong to the Scottish Wildlife Trust.

WRAP PATTERN

Every square has the same overall dimensions: 23 stitches by 33 rows.

For Tree of Life, Starfish, Anchor, Diamond and Double Moss Stitch Diamond follow the appropriate chart.

For Open Tree and Open Diamond, follow the patterns below.

OPEN TREE

Cast on 23 sts.

Rows 1 to 3: *K1, P1; rep from * to last st, K1. For every following row work K1, P1, K1 at each end to form the borders.

The central 17 sts are worked as follows:

Row 4: P.

Row 5: K6, K2tog, yfwd, K1, yfwd, skpo, K6.

Row 6 and every 11 foll alt Rows: P.

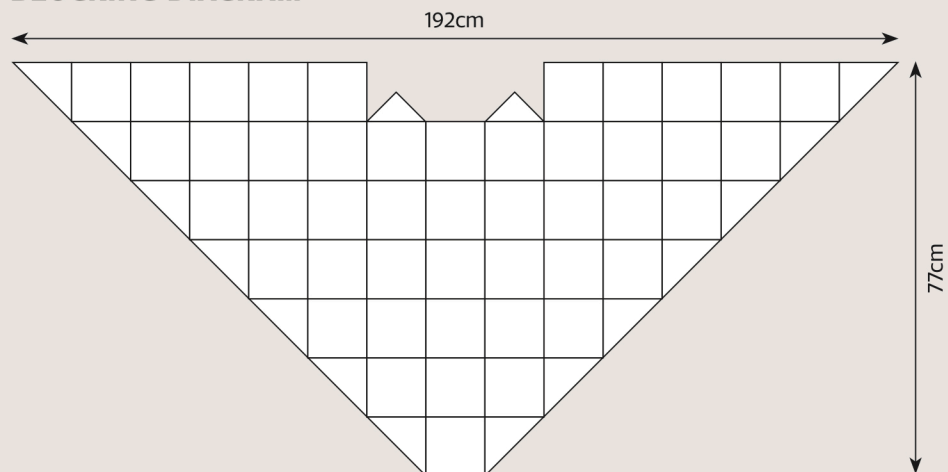
Row 7: K5, K2tog, yfwd, K3, yfwd, skpo, K5.

Row 9: K4, *K2tog, yfwd; rep from * once more, K1, *yfwd, skpo; rep from * once more, K4.

Row 11: K3, *K2tog, yfwd; rep from * once more, K3, *yfwd, skpo; rep from * once more, K3.

Row 13: K2, *k2tog, yfwd; rep from * 2

BLOCKING DIAGRAM



more times, K1, *yfwd, skpo; rep from * 2 more times, K2.

Row 15: K1, *K2tog, yfwd; rep from * 2 more times, K3, *yfwd, skpo; rep from * 2 more times, K1.

Row 17: K2tog, yfwd; rep from * 3 more times, K1, *yfwd, skpo; rep from * 3 more times.

Row 19: As Row 15.

Row 21: As Row 13.

Row 23: As Row 11.

Row 25: As Row 9.

Row 27: As Row 7.

Row 29: As Row 5.

Row 30: P.

Rows 31 to 33: *K1, P1; rep from * to last st, K1.

Cast off.

OPEN DIAMOND

Cast on 23 sts.

Rows 1 to 3: *K1, P1; rep from * to last st, K1.

For every following row work K1, P1, K1 at each end to form the borders.

The central 17 sts are worked as follows: Work 5 rows st st starting with a P row.

Row 9: K6, K2tog, yfwd, K1, yfwd, skpo, K6.

Row 10 and every foll alt Row: P.

Row 11: K5, K2tog, yfwd, K3, yfwd, skpo, K5.

Row 13: K4, *K2tog, yfwd; rep from * once more, K1, *yfwd, skpo; rep from * once more, K4.

Row 15: K3, *K2tog, yfwd; rep from * once more, K3, *yfwd, skpo; rep from * once more, K3.

Row 17: K2, *K2tog, yfwd; rep from * once more, K5, *yfwd, skpo; rep from * once more, K2.* to last st, K1.

Row 19: K4, *yfwd, skpo; rep from * once more, K1, *K2tog, yfwd; rep from * once more, K4.

Row 21: K5, yfwd, skpo, yfwd, sl1, K2tog, pssso, yfwd, K2tog, yfwd, K5.

Row 23: K6, yfwd, skpo, K1, K2tog, yfwd, K6.

Row 25: K7, yfwd, sl1, K2tog, pssso, yfwd, K7.

Work next 5 rows in st st, then work 3 rows moss st and cast off.

HALF SQUARES – MAKE 14

Cast on 23 sts.

Rows 1 to 3: *K1, P1; rep from * to last st, K1.

Row 4: (WS) K1, P1, K1, K2tog, K to last 2 sts, P1, K1.

Row 5: K1, P1, K1, P to last 5 sts, P2tog, K1, P1, K1.

Row 6: K1, P1, K1, w&t, K1, P1, K1, turn, K1, P1, K1, K to last 2 sts, P1, K1.

Row 7: K1, P1, K1, P to last 5 sts, P2tog, K1, P1, K1.



Classic motifs include the 'Tree of Life'