

Philips
LCD monitor with USB
docking

B Line

27" (68.6 cm)
2560 x 1440 (QHD)

276B1JH



Simplify your connections

with hybrid USB docking

This Philips monitor offers 100W power delivery and a simple laptop docking solution. One USB dual mesh cable with Type C and A connectors delivers video, Ethernet, power-charge and DisplayLink. Windows Hello webcam offers greater security.

Single cable for USB docking

- Built-in USB docking simplifies your connections
- One USB dual-mesh cable further reduces cable clutter
- USB-C enables laptop power charging directly from monitor
- USB-A with DisplayLink enables existing laptops usage
- Built in RJ-45 ethernet gives data security

Excellent performance

- IPS technology for full colors and wide viewing angles
- LowBlue Mode for easy on-the-eyes productivity
- Securely sign in with pop-up webcam with Windows Hello™
- DisplayPort-out for connecting additional displays

Designed for sustainability

- Designed to meet environmental standards
- PowerSensor saves up to 80% energy costs
- LightSensor for the perfect brightness with minimal power



PHILIPS

Highlights

USB Docking

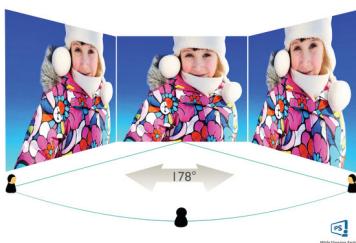
Philips USB-docking monitors deliver universal port replication, for a simple, clutter-free, notebook connection. Securely connect to networks, transmit data, video and audio from laptop only using a single USB cable. Even more, dock with USB Type-C port for extra power charging. For docking monitors with built-in DisplayLink Technology, users can benefit from forward and backward compatibility of USB with virtually any latest notebook. USB-docking can boost business productivity and reduce costs.

USB Type-C connection



This Philips display features a built-in USB type-C docking station with power delivery. With intelligent and flexible power management, you can power charge your compatible* laptop directly. Its slim, reversible USB-C connector allows for easy, one-cable docking. Simplify by connecting all your peripherals like keyboard, mouse and your RJ-45 Ethernet cable to the monitor's docking station. You can watch high resolution video and transfer data at a super-speed, while powering up and re-charging your notebook at the same time.

IPS technology



IPS displays use an advanced technology which gives you extra wide viewing angles of 178/178

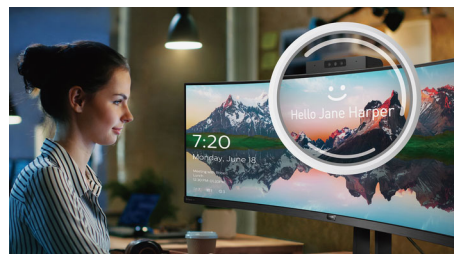
degree, making it possible to view the display from almost any angle - even in 90 degree Pivot mode! Unlike standard TN panels, IPS displays gives you remarkably crisp images with vivid colors, making it ideal not only for Photos, movies and web browsing, but also for professional applications which demand color accuracy and consistent brightness at all times.

LowBlue Mode



Studies have shown that just as ultra-violet rays can cause eye damage, shortwave length blue light rays from LED displays can cause eye damage and affect vision over time. Developed for wellbeing, Philips LowBlue Mode setting uses a smart software technology to reduce harmful shortwave blue light.

Windows Hello™ pop-up webcam



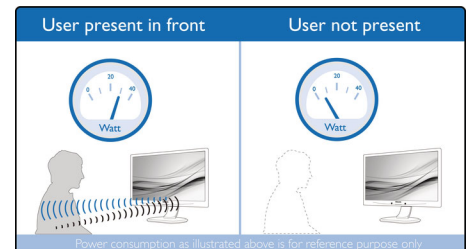
Philips' innovative and secure webcam pops up when you need it and securely tucks back into the monitor when you are not using it. The webcam is also equipped with advanced sensors for Windows Hello™ facial recognition, which conveniently logs you into your Windows devices in less than 2 seconds, 3 times faster than a password.

DisplayPort-out

With DisplayPort-out you can connect multiple high resolution displays with just one

cable from your first display to the PC. The ability to daisy chain multiple displays enables you to create a clean desktop without the hassle of too many wires all over.

PowerSensor



PowerSensor is a built-in 'people sensor' that transmits and receives harmless infrared signals to determine if user is present and automatically reduces monitor brightness when user steps away from the desk, cutting energy costs by up to 80 percent and prolonging monitor life

LightSensor



LightSensor uses a smart sensor to adjust the picture brightness depending on the room light conditions for the perfect picture with minimal power usage.



USB-C Docking



Wide Viewing Angle



Quad HD



LowBlue Mode



Flicker-free



Windows Hello



PowerSensor



LightSensor



HDMI™

Specifications

Picture/Display

- LCD panel type: IPS technology
- Backlight type: W-LED system
- Panel Size: 27 inch / 68.6 cm
- Display Screen Coating: Anti-Glare, 3H, Haze 25%
- Effective viewing area: 596.736 (H) x 335.664 (V)
- Aspect ratio: 16:9
- Maximum resolution: 2560 x 1440 @ 75 Hz*
- Pixel Density: 109 PPI
- Response time (typical): 4 ms (Gray to Gray)*
- Brightness: 300 cd/m²
- Contrast ratio (typical): 1000:1
- SmartContrast: 50,000,000:1
- Pixel pitch: 0.2331 x 0.2331 mm
- Viewing angle: 178° (H) / 178° (V), @ C/R > 10
- Flicker-free
- Picture enhancement: SmartImage
- Display colors: 16.7 M
- Color gamut (typical): NTSC 110%*, sRGB 123%*
- Scanning Frequency: 30 - 114 kHz (H) / 48 - 75 Hz (V)
- sRGB
- LowBlue Mode
- EasyRead

Connectivity

- Signal Input: DisplayPort 1.4 x 1, HDMI 1.4 x 1, USB-C x 1 (DP Alt mode, DisplayLink)*
- HDCP: HDCP 1.4 (HDMI/DP/USB-C video/DisplayLink)
- HBR3: for USB-C
- Signal Output: DisplayPort out*
- USB:: Upstream: USB-C 3.2 Gen 1 x 1; Downstream: USB-C x 1 (PD 15W), USB-A 3.2 x 4 (with 1 fast charge B.C 1.2)
- Audio (In/Out): Audio out
- DC power out: x 1 (support 19V @ 4.73A, max. 90W)*
- RJ45: Ethernet LAN up to 1G*, Wake on LAN
- Sync Input: Separate Sync

USB

- USB-C: Reversible plug connector
- Super speed: Data and Video transfer
- DP: Built-in Display Port Alt mode
- Power delivery: USB PD version 3.0
- USB-C max. power delivery: Up to 100 W* (5V/3A; 7V/3A; 9V/3A; 10V/3A; 12V/3A; 15V/3A; 20V/4.5A)

Convenience

- Built-in Speakers: 3 W x 2
- Built-in webcam: 2.0 megapixel FHD camera with microphone and LED indicator (for Windows 10 Hello)
- User convenience: SmartImage, Input, PowerSensor, Menu, Power On/Off
- Control software: SmartControl
- OSD Languages: Brazil Portuguese, Czech, Dutch, English, French, Finnish, German, Greek, Hungarian, Italian, Japanese, Korean, Portuguese, Polish, Russian, Simplified Chinese, Spanish, Swedish, Traditional Chinese, Turkish, Ukrainian
- Other convenience: Kensington lock, VESA mount

(100x100mm)

- Plug & Play Compatibility: DDC/CI, Mac OS X, sRGB, Windows 10 / 8.1 / 8 / 7

Stand

- Height adjustment: 150 mm
- Pivot: -/+ 90 degree
- Swivel: -/+ 180 degree
- Tilt: -5 ~ 30 degree

Power

- ECO mode: 17.6 W (typ.)
- On mode: 17.7 W (typ.) (EnergyStar test method)
- Standby mode: 0.3 W
- Off mode: Zero watts with Zero switch
- Energy Label Class: E
- Power LED indicator: Operation - White, Standby mode- White (blinking)
- Power supply: Built-in, 100-240VAC, 50-60Hz

Dimensions

- Product with stand(max height): 613 x 537 x 225 mm
- Product without stand (mm): 613 x 366 x 54 mm
- Packaging in mm (WxHxD): 730 x 471 x 193 mm

Weight

- Product with stand (kg): 7.38 kg
- Product without stand (kg): 5.59 kg
- Product with packaging (kg): 10.60 kg

Operating conditions

- Temperature range (operation): 0°C to 40°C °C
- Temperature range (storage): -20°C to 60°C °C
- Relative humidity: 20%-80 %
- Altitude: Operation: +12,000ft (3,658m), Non-operation: +40,000ft (12,192m)
- MTBF (demonstrated): 70,000 hrs (excluded backlight)

Sustainability

- Environmental and energy: PowerSensor, LightSensor, EnergyStar 8.0, EPEAT*, TCO Certified Edge, RoHS
- Recyclable packaging material: 100 %
- Post consumer recycled plastic: 85%
- Specific Substances: Mercury free, PVC / BFR free housing

Compliance and standards

- Regulatory Approvals: UKRAINIAN, CB, TUV/GS, TUV Ergo, SEMKO, CU-EAC, EAEU RoHS, FCC Class B, ICES-003, CE Mark, TUV Eye Comfort certified

Cabinet

- Front bezel: Black
- Rear cover: Black
- Foot: Black
- Finish: Texture

What's in the box?

- Monitor with stand
- Cables: HDMI cable, DP cable, USB-C/A Y cable,

- DC out cable, Power cable
- User Documentation



Issue date 2021-04-01

Version: 4.0.2

12 NC: 8670 001 70329
EAN: 87 12581 77111 9

© 2021 Koninklijke Philips N.V.
All Rights reserved.

Specifications are subject to change without notice.
Trademarks are the property of Koninklijke Philips N.V. or their respective owners.

www.philips.com

* "IPS" word mark / trademark and related patents on technologies belong to their respective owners.

* The maximum resolution works for either HDMI, DP or USB-C input.

* Response time value equal to SmartResponse

* NTSC Area based on CIE1976

* sRGB Area based on CIE1931

* DisplayPort out works only under either DP in or USB-C in.

* Mac OS does not support DP-Out MST extension function.

* USB-C DP Alt mode means USB-C to C cable, USB-C DisplayLink means USB-C to A cable.

* DC power out function only supports Intel NUC with 19V@4.73A, max 90W. Only one PC or notebook should be connected to either USB-C or DC out port for power passthrough function)

* If your Ethernet connection seems slow, please enter OSD menu and select USB 3.0 or higher version which can support the LAN speed to 1G.

* For Video transmission via USB-C, your Notebook/device must support USB-C DP Alt mode

* Activities such as screen sharing, on-line streaming video and audio over the Internet can impact your network performance. Your hardware, network bandwidth and its performance will determine overall audio and video quality.

* For USB-C power and charging function, your Notebook/device must support USB-C standard Power Delivery specifications. Please check with your Notebook user manual or manufacturer for more details.

* USB-C max. power delivery is upto 100W because of Smart Power function. User can adjust monitor brightness setting to get different levels of power delivery. 1st USB-C port can support to 90 W max and 2nd USB-C port can support to 15 W max. For more information, please refer to user manual.

* EPEAT rating is valid only where Philips registers the product. Please visit <https://www.epeat.net/> for registration status in your country.

* The monitor may look different from feature images.