

Philips
LCD monitor with USB-C

B Line

27" (68.6 cm)
1920 x 1080 (Full HD)

273B9



Simplify your connections

with USB-C docking monitor

The Philips B line monitor with USB-C docking replaces cable clutter. View Full HD image and re-charge your laptop, all at the same time with a single USB-C cable. SmartErgo base, Flicker-free and LowBlue mode make work easy-on-the eyes.

Single cable USB-C connection

- Connect your notebook with one USB-C cable
- Power and re-charge compatible notebook from the monitor
- USB 3.2 high speed data transfer

Excellent performance

- IPS technology for full colors and wide viewing angles

Designed for the way you work

- SmartErgoBase enables people-friendly ergonomic adjustments
- Less eye fatigue with Flicker-free technology
- LowBlue Mode for easy on-the-eyes productivity
- HDMI ensures universal digital connectivity

Designed for sustainability

- Designed to meet environmental standards
- PowerSensor saves up to 70% energy costs

PHILIPS

LCD monitor with USB-C
B Line 27" (68.6 cm), 1920 x 1080 (Full HD)

273B9/00

Highlights

USB-C connection

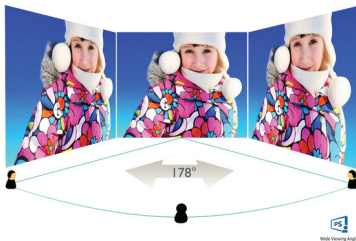


This Philips display features a USB type-C connector with power delivery. With intelligent and flexible power management, you can power charge your compatible device directly. Its slim, reversible USB-C allows for easy, one-cable connection. You can watch high resolution video and transfer data at a super-speed, while powering up and re-charging your compatible device at the same time.

Power & re-charge notebook

This monitor features a built in USB-C connector which meets USB Power Delivery standard. With intelligent and flexible power management, you can now power up and or re-charge your compatible* Notebook directly from the Monitor using a single USB-C cable.

IPS technology



IPS displays use an advanced technology which gives you extra wide viewing angles of 178/178 degree, making it possible to view the display from almost any angle - even in 90 degree Pivot mode! Unlike standard TN panels, IPS displays gives you remarkably crisp images with vivid colors, making it ideal not only for Photos, movies and web browsing, but also for professional applications which demand color accuracy and consistent brightness at all times.

SmartErgoBase



The SmartErgoBase is a monitor base that delivers ergonomic display comfort and provides cable management. The base's people-friendly height, swivel, tilt and rotation angle adjustments position the monitor for maximum comfort that can ease the physical strains of a long workday; cable management reduces cable clutter and keeps the workspace neat and professional.

Flicker-free technology



Due to the way brightness is controlled on LED-backlit screens, some users experience flicker on their screen which causes eye fatigue. Philips Flicker-free Technology applies a new solution to regulate brightness and reduce flicker for more comfortable viewing.

LowBlue Mode



Studies have shown that just as ultra-violet rays can cause eye damage, shortwave length blue

light rays from LED displays can cause eye damage and affect vision over time. Developed for wellbeing, Philips LowBlue Mode setting uses a smart software technology to reduce harmful shortwave blue light.

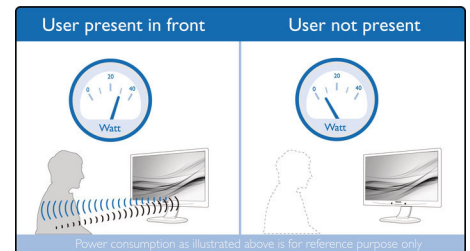
HDMI Ready



HDMI-ready

An HDMI-ready device has all the required hardware to accept High-Definition Multimedia Interface (HDMI) input. A HDMI cable enables high-quality digital video and audio all transmitted over a single cable from a PC or any number of AV sources (including set-top boxes, DVD players, A/V receivers and video cameras).

PowerSensor



PowerSensor is a built-in 'people sensor' that transmits and receives harmless infrared signals to determine if user is present and automatically reduces monitor brightness when user steps away from the desk, cutting energy costs by up to 70 percent and prolonging monitor life.



USB-C Docking



Ultra Narrow Bezel



SmartErgo Base



Flicker-free



EasyRead



LowBlue Mode



HDMI



Built-in Speaker



PowerSensor

Specifications

Picture/Display

- LCD panel type: IPS technology
- Adaptive sync
- Backlight type: W-LED system
- Panel Size: 27 inch / 68.6 cm
- Display Screen Coating: Anti-Glare, 3H, Haze 25%
- Effective viewing area: 597.888 (H) x 336.312 (V)
- Aspect ratio: 16:9
- Maximum resolution: 1920 x 1080 @ 75 Hz*
- Pixel Density: 82 PPI
- Response time (typical): 4 ms (Gray to Gray)*
- Brightness: 250 cd/m²
- Contrast ratio (typical): 1000:1
- SmartContrast: 50,000,000:1
- Pixel pitch: 0.3114 x 0.3114 mm
- Viewing angle: 178° (H) / 178° (V), @ C/R > 10
- Picture enhancement: SmartImage
- Display colors: 16.7M
- Color gamut (typical): NTSC 76%*, sRGB 98%*
- Scanning Frequency: 30 - 85 kHz (H) / 48 - 75 Hz (V)
- sRGB
- Flicker-free
- LowBlue Mode
- EasyRead

Connectivity

- Signal Input: VGA (Analog), DisplayPort 1.2 x 1, HDMI 1.4 x 1, USB-C 3.2 Gen 1 x 1 (upstream, power delivery up to 65W)
- HDCP: HDCP 1.4 (DP/HDMI/USB-C)
- USB: USB-C 3.2 Gen 1 x 1 (upstream), USB 3.2 x 4 (downstream with 1 fast charge B.C 1.2)
- Audio (In/Out): PC audio-in, Headphone out
- Sync Input: Separate Sync, Sync on Green

USB

- USB-C: Reversible plug connector
- Super speed: Data and Video transfer
- DP: Built-in DisplayPort Alt mode
- Power delivery: USB PD version 3.0
- USB-C max. power delivery: Up to 65W (5V/3A; 9V/3A; 10V/3A; 12V/3A; 15V/3A; 20V/3.25A)

Convenience

- Built-in Speakers: 2 W x 2
- User convenience: SmartImage, Input, PowerSensor, Menu, Power On/Off
- Control software: SmartControl
- OSD Languages: Brazil Portuguese, Czech, Dutch, English, Finnish, French, German, Greek, Hungarian, Italian, Japanese, Korean, Polish, Portuguese, Russian, Simplified Chinese, Spanish, Swedish, Traditional Chinese, Turkish, Ukrainian
- Other convenience: Kensington lock, VESA mount (100x100mm)
- Plug & Play Compatibility: DDC/CI, Mac OS X, sRGB, Windows 10 / 8.1 / 8 / 7

Stand

- Height adjustment: 150 mm

- Pivot: +/- 90 degree
- Swivel: +/- 175 degree
- Tilt: -5 ~ 30 degree

Power

- ECO mode: 13.5 W (typ.)
- Energy Label Class: E
- On mode: 16.5 W (typ.) (EnergyStar 8.0 test method)
- Standby mode: < 0.5 W (typ.)
- Off mode: Zero watts with Zero switch
- Power LED indicator: Operation - White, Standby mode- White (blinking)
- Power supply: Built-in, 100-240VAC, 50-60Hz

Dimensions

- Product with stand(max height): 614 x 558 x 224 mm
- Product without stand (mm): 614 x 372 x 61 mm
- Packaging in mm (WxHxD): 690 x 462 x 250 mm

Weight

- Product with stand (kg): 7.03 kg
- Product without stand (kg): 4.59 kg
- Product with packaging (kg): 9.30 kg

Operating conditions

- Temperature range (operation): 0°C to 40°C °C
- Temperature range (storage): -20°C to 60°C °C
- Relative humidity: 20%-80 %
- Altitude: Operation: +12,000ft (3,658m), Non-operation: +40,000ft (12,192m)
- MTBF (demonstrated): 70,000 hrs (excluded backlight)

Sustainability

- Environmental and energy: PowerSensor, EnergyStar 8.0, EPEAT*, TCO Certified Edge, WEEE, RoHS
- Recyclable packaging material: 100 %
- Post consumer recycled plastic: 85%
- Specific Substances: PVC / BFR free housing, Mercury free

Compliance and standards

- Regulatory Approvals: CE Mark, FCC Class B, SEMKO, CU-EAC, TUV/GS, TUV Ergo, EPA, UKRAINIAN, ICES-003, PSE, MEPS, RCM, VCCI, PSB, CB

Cabinet

- Front bezel: Black
- Rear cover: Black
- Foot: Black
- Finish: Texture

What's in the box?

- Monitor with stand
- Cables: HDMI cable, DP cable, USB-C to C/A cable, Power cable
- User Documentation



Issue date 2021-02-28

Version: 2.0.1

12 NC: 8670 001 65108
EAN: 87 12581 76419 7

© 2021 Koninklijke Philips N.V.
All Rights reserved.

Specifications are subject to change without notice.
Trademarks are the property of Koninklijke Philips N.V. or their respective owners.

www.philips.com

* "IPS" word mark / trademark and related patents on technologies belong to their respective owners.
* The maximum resolution works for either HDMI, DP or USB-C input.
* Response time value equal to SmartResponse
* NTSC Area based on CIE1976
* sRGB Area based on CIE1931
* Activities such as screen sharing, on-line streaming video and audio over the Internet can impact your network performance. Your hardware, network bandwidth and its performance will determine overall audio and video quality.
* For USB-C power and charging function, your Notebook/device must support USB-C standard Power Delivery specifications. Please check with your Notebook user manual or manufacturer for more details.
* For Video transmission via USB-C, your Notebook/device must support USB-C DP Alt mode
* EPEAT rating is valid only where Philips registers the product. Please visit <https://www.epeat.net/> for registration status in your country.
* The monitor may look different from feature images.