



Philips Brilliance
32:10 SuperWide curved
LCD display

P Line

43 (43.4" / 110.2 cm diag.)
3840 x 1200

Brilliance

439P9H

Wide open possibilities

with two high-performance monitors in one

Philips 43" curved 32:10 SuperWide display is like two full-size high-performance monitors in-one. Productivity enhancing features like USB-C and pop-up webcam with Windows Hello deliver performance and convenience you expect.

Expand your horizons

- 32:10 SuperWide designed to replace multiscreen setups
- MultiView enables simultaneous dual connect and view
- 1800r curved display for a more immersive experience
- Effortlessly smooth action with Adaptive-Sync technology

Optimal Connectivity

- Built in USB-C docking station
- Built-in KVM switch to easily switch between sources

Designed for the way you work

- Securely sign in with pop-up webcam with Windows Hello™
- DisplayHDR 400 for more lifelike colorful visuals
- Less eye fatigue with Flicker-free technology
- LowBlue Mode for easy on-the-eyes productivity
- Tilt, swivel and height-adjust for an ideal viewing position

PHILIPS

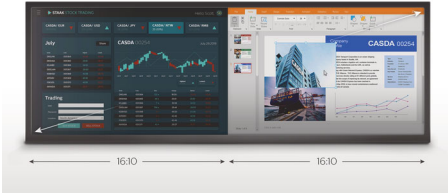
32:10 SuperWide curved LCD display
P Line 43 (43.4" / 110.2 cm diag.), 3840 x 1200

439P9H/00

Highlights

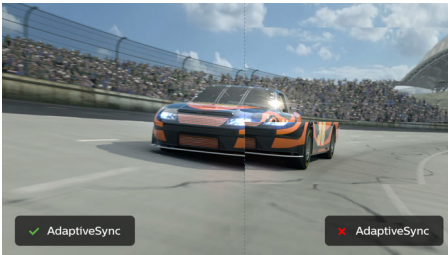
32:10 SuperWide

SuperWide 32:10



32:10 SuperWide 43" screen, with 3840 x 1200 resolution, is designed to replace multiscreen setups for massive wide view. It's like having two 16:10 displays side-by-side. SuperWide monitors offer screen area of dual monitors without the complicated setup.

Adaptive-Sync technology



Gaming shouldn't be a choice between choppy gameplay or broken frames. Get fluid, artifact-free performance at virtually any framerate with Adaptive-Sync technology, smooth quick refresh and ultra-fast response time.

MultiView technology

With the ultra-high resolution Philips MultiView display you can now experience a world of connectivity. MultiView enables active dual connect and view so that you can work with multiple devices like a PC and notebook simultaneously, for complex multi-tasking.

1800r Curved display

Innovative curved display offers less image distortion, a wider field of view, reduced glare, and more comfort for eyes.

Built in USB-C docking station



This Philips display features a built-in USB type-C docking station with power delivery. Its slim, reversible USB-C connector allows for easy, one-cable docking. Simplify by connecting all your peripherals like keyboard, mouse and your RJ-45 Ethernet cable to the monitor's docking station. Simply connect your notebook and this monitor with a single USB-C cable to watch high-resolution video and transfer super-speed data, while powering up and re-charging your notebook at the same time.

MultiClient Integrated KVM



With MultiClient Integrated KVM switch, you can control two separate PCs with one monitor-keyboard-mouse set up. A convenient button allows you to quickly switch between

sources. Handy with set-ups that require dual PC computing power or sharing one large monitor to show two different PCs.

Windows Hello™ pop-up webcam



Phillips' innovative and secure webcam pops up when you need it and securely tucks back into the monitor when you are not using it. The webcam is also equipped with advanced sensors for Windows Hello™ facial recognition, which conveniently logs you into your Windows devices in less than 2 seconds, 3 times faster than a password.

DisplayHDR 400



VESA-certified DisplayHDR 400 delivers a significant step-up from normal SDR displays. Unlike, other 'HDR compatible' screens, true DisplayHDR 400 produces astonishing brightness, contrast and colors. With global dimming and peak brightness up-to 400 nits, images come to life with notable highlights while featuring deeper, more nuanced blacks. It renders a fuller palette of rich new colors, delivering a visual experience that engages your senses.



Specifications

Picture/Display

- LCD panel type: VA LCD
- Adaptive sync
- Backlight type: W-LED system
- Panel Size: 43.4 inch / 110.2 cm
- Display Screen Coating: Anti-Glare, 2H, Haze 25%
- Effective viewing area: 1052.3 (H) x 328.8 (V) mm - at a 1800R curvature*
- Aspect ratio: 32:10
- Maximum resolution: 3840 x 1200 @ 100 Hz*
- Pixel Density: 93 PPI
- Response time (typical): 4 ms (Gray to Gray)*
- Brightness: 450 cd/m²
- Contrast ratio (typical): 3000:1
- SmartContrast: 80,000,000:1
- Pixel pitch: 0.274 x 0.274 mm
- Viewing angle: 178° (H) / 178° (V), @ C/R > 10
- Picture enhancement: SmartImage
- Display colors: Color support 1.07 billion colors
- Color gamut (min.): BT. 709 Coverage: 99%*, DCI-P3 Coverage: 95%*
- Color gamut (typical): NTSC 105%*, sRGB 123%*, Adobe RGB 91%*
- HDR: DisplayHDR 400 certified (DP / HDMI)
- Scanning Frequency: 30 - 150 kHz (H) / 48 - 100 Hz (V)
- SmartUniformity: 93 ~ 105%
- Delta E: < 2 (sRGB)
- sRGB
- Flicker-free
- LowBlue Mode
- EasyRead

Connectivity

- Signal Input: DisplayPort 1.4* x 2; HDMI 2.0b x 1; USB-C 3.2 Gen 1 x 2 (upstream, power delivery up to 90W)
- HDCP: HDCP 2.2 (HDMI / DP), HDCP 1.4 (USB-C)
- USB: USB-C 3.2 Gen 1 x 2 (upstream), USB 3.2 x 4 (downstream with 1 fast charge B.C 1.2)
- Audio (In/Out): Headphone out
- RJ45: Ethernet LAN up to 1G*
- Sync Input: Separate Sync

USB docking

- USB-C: Reversible plug connector
- Super speed: Data and Video transfer
- DP: Built-in Display Port Alt mode
- USB-C power delivery: USB PD version 3.0
- USB-C max. power delivery: Up to 90W* (5V/3A; 7V/3A; 9V/3A; 10V/3A; 12V/3A; 15V/3A; 20V/3.75A; 20V/4.5A)

Convenience

- Built-in Speakers: 5 W x 2
- Built-in webcam: 2.0 megapixel FHD camera with microphone and LED indicator (for Windows 10 Hello)
- MultiView: PBP (2x devices)
- User convenience: SmartImage, Input, User, Menu, Power On/Off
- Control software: SmartControl
- OSD Languages: Brazil Portuguese, Czech, Dutch,

- English, Finnish, French, German, Greek, Hungarian, Italian, Japanese, Korean, Polish, Portuguese, Russian, Simplified Chinese, Spanish, Swedish, Traditional Chinese, Turkish, Ukrainian
- Other convenience: Kensington lock, VESA mount (100x100mm)
- Plug & Play Compatibility: DDC/CI, Mac OS X, sRGB, Windows 10 / 8.1 / 8 / 7

Stand

- Height adjustment: 130 mm
- Swivel: -/+ 20 degree
- Tilt: -5~10 degree

Power

- ECO mode: 36.2 W (typ.)
- On mode: 41.8 W (typ.) (EnergyStar 8.0 test method)
- Standby mode: 0.4 W (typ.)
- Off mode: Zero watts with Zero switch
- Energy Label Class: B
- Power LED indicator: Operation - White, Standby mode- White (blinking)
- Power supply: Built-in, 100-240VAC, 50-60Hz

Dimensions

- Product with stand(max height): 1058 x 560 x 303 mm
- Product without stand (mm): 1058 x 361 x 137 mm
- Packaging in mm (WxHxD): 1150 x 525 x 350 mm

Weight

- Product with stand (kg): 14.37 kg
- Product without stand (kg): 10.34 kg
- Product with packaging (kg): 20.19 kg

Operating conditions

- Temperature range (operation): 0°C to 40°C °C
- Temperature range (storage): -20°C to 60°C °C
- Relative humidity: 20%-80 %
- Altitude: Operation: +12,000ft (3,658m), Non-operation: +40,000ft (12,192m)
- MTBF (demonstrated): 70,000 hrs (excluded backlight)

Sustainability

- Environmental and energy: EnergyStar 8.0, EPEAT*, TCO Certified, RoHS, WEEE
- Recyclable packaging material: 100 %
- Post consumer recycled plastic: 35%
- Specific Substances: PVC / BFR free housing, Mercury free, Lead free

Compliance and standards

- Regulatory Approvals: CE Mark, FCC Class B, UKRAINIAN, ICES-003, CU-EAC, TUV/GS, TUV Ergo, SEMKO, EPA

Cabinet

- Front bezel: Black
- Rear cover: Black
- Foot: Black
- Finish: Texture

What's in the box?

- Monitor with stand
- Cables: HDMI cable, DP cable, USB-C to C/A, Power cable
- User Documentation



Issue date 2020-08-27

Version: 6.0.2

12 NC: 8670 001 60105
EAN: 87 12581 75956 8

© 2020 Koninklijke Philips N.V.
All Rights reserved.

Specifications are subject to change without notice.
Trademarks are the property of Koninklijke Philips N.V. or their respective owners.

www.philips.com

* Radius of the arc of the display curvature in mm

* The maximum resolution works for either HDMI, DP or USB-C input.

* Response time value equal to SmartResponse

* BT. 709 / DCI-P3 Coverage based on CIE1976

* NTSC Area based on CIE1976

* sRGB Area based on CIE 1931

* Adobe RGB Coverage based on CIE1976

* DisplayPort 1.4 version is for HDR

* Activities such as screen sharing, on-line streaming video and audio over the Internet can impact your network performance. Your hardware, network bandwidth and its performance will determine overall audio and video quality.

* For USB-C power and charging function, your Notebook/device must support USB-C standard Power Delivery specifications. Please check with your Notebook user manual or manufacturer for more details.

* For Video transmission via USB-C, your Notebook/device must support USB-C DP Alt mode

* USB-C max. power delivery: 1st USB-C port can support to 75 W and 2nd USB-C port can support to 15 W.

* If your Ethernet connection seems slow, please enter OSD menu and select USB 3.0 or higher version which can support the LAN speed to 1G.

* EPEAT rating is valid only where Philips registers the product. Please visit <https://www.epeat.net/> for registration status in your country.

* The monitor may look different from feature images.