

# PHILIPS

LCD monitor with  
SoftBlue Technology

E Line

22 (21.5" / 54.6 cm diag.)

Full HD (1920 x 1080)



227E6EDSD



## SoftBlue Technology

developed for the wellbeing of your eyes

Designed for you: The elegant new Philips E-line monitor features new SoftBlue Technology for easy on the eyes brilliantly colored images.

### Superb Picture Quality

- SoftBlue Technology easy on the eyes and maintains color
- IPS-ADS wide-view technology for image and color accuracy
- 16:9 Full HD display for crisp detailed images
- SmartImage Lite for easy optimized image settings
- SmartControl Lite: For quick and easy display tuning
- SmartContrast for deep black level details

### Elegant Design

- Elegant, slim design complements your home decor
- Superb glossy finish enhance your home decoration
- Modern Touch controls complement the design

### Experience immersive multimedia

- MHL technology for enjoying mobile content on big screen

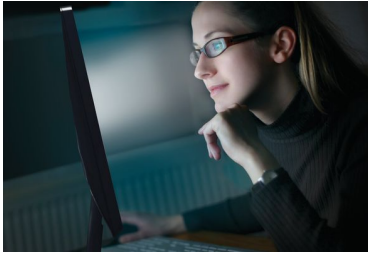
### Greener everyday

- Low power consumption saves energy bills



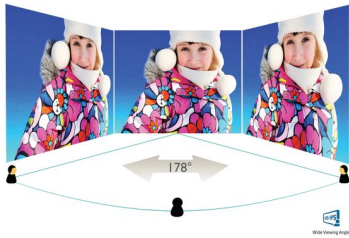
# Highlights

## SoftBlue Technology



SoftBlue LED technology uses a smart technology to reduce harmful shortwave blue light without affecting the color or image of the display. SoftBlue LED technology is certified by international testing organizations TUV Rheinland to reduce harmful blue light.

## IPS-ADS technology



IPS-ADS displays use an advanced technology which gives you extra wide viewing angles of 178/178 degree, making it possible to view the display from almost any angle. Unlike standard TN panels, IPS-ADS displays give you remarkably crisp images with vivid colors, making it ideal not only for Photos, movies and web browsing, but also for professional applications which demand color accuracy and consistent brightness at all times.

## 16:9 Full HD display



The Full HD screen has the widescreen resolution of 1920 x 1080p. This is the highest resolution of HD sources for the best possible picture quality. It is fully future proof as it supports 1080p signals from all sources, including the most recent like Blu-ray and advanced HD game consoles. The signal processing is extensively upgraded to support

this much higher signal quality and resolution. It produces brilliant flicker-free progressive scan pictures with superb brightness and colors.

## SmartImage Lite

SmartImage Lite is an exclusive, leading edge Philips technology that analyzes the content displayed on your screen. Based on a scenario you select, SmartImage Lite dynamically enhances the contrast, color saturation and sharpness of images and videos for ultimate display performance - all in real time with the press on a single button.

## SmartControl Lite

SmartControl Lite is the next generation 3D icon based GUI monitor control software. This allows user to fine-tune most parameters of the monitor like Color, Brightness, screen calibration, Multi-media, ID management, etc with the mouse.

## SmartContrast



SmartContrast is a Philips technology that analyzes the contents you are displaying, automatically adjusting colors and controlling backlight intensity to dynamically enhance contrast for the best digital images and videos or when playing games where dark hues are displayed. When Economy mode is selected, contrast is adjusted and backlighting fine-tuned for just-right display of everyday office applications and lower power consumption.

## Modern Touch controls



Touch controls are intelligent, touch sensitive icons that replace protruding buttons that lets the user adjust the monitor to their requirement. Responding to your lightest touch, Touch control gives the monitor a modern feel.

## MHL technology



Mobile High Definition Link (MHL) is a mobile audio/video interface for directly connecting mobile phones and other portable devices to high-definition displays. An optional MHL cable allows you to simply connect your MHL capable mobile device to this large Philips MHL display, and watch your HD videos come to life with full digital sound. Now not only you can enjoy your mobile games, photos, movies, or other apps on its big screen, you can simultaneously charge your mobile device so you never run out of power half way.

## Low power consumption

Low power consumption saves energy bills



## TUV Certified Low Blue Light

Philips displays with SoftBlue LED technology are certified by TUV Rheinland Low Blue Light testing standard (2PFG) to reduce harmful blue light.



# Specifications

## Picture/Display

**LCD panel type:** IPS-ADS LCD  
**Backlight type:** W-LED system  
**Panel Size:** 21.5 inch / 54.6 cm  
**Effective viewing area:** 476.6 (H) x 268.1 (V)  
**Aspect ratio:** 16:9  
**Optimum resolution:** 1920 x 1080 @ 60Hz  
**Response time (typical):** 5 ms (Gray to Gray)\*  
**Brightness:** 250 cd/m<sup>2</sup>  
**Contrast ratio (typical):** 1000:1  
**SmartContrast:** 20,000,000:1  
**Pixel pitch:** 0.248 x 0.248 mm  
**Viewing angle:** 178° (H) / 178° (V), @ C/R > 10  
**Picture enhancement:** SmartImage Lite  
**Display colors:** 16.7 M  
**Scanning Frequency:** 30 -83 kHz (H) / 56 -75 Hz (V)  
**MHL:** 1080P @ 60Hz  
**sRGB**  
**SoftBlue**

## Connectivity

**Signal Input:** VGA (Analog ), DVI-D (digital, HDCP), MHL-HDMI (digital, HDCP)  
**Sync Input:** Separate Sync, Sync on Green  
**Audio (In/Out):** HDMI audio out

## Convenience

**User convenience:** Power On/Off, Menu, 4:3 / Wide, Input, SmartImage lite  
**OSD Languages:** Brazil Portuguese, Czech, Dutch, English, Finnish, French, German,

Greek, Hungarian, Italian, Japanese, Korean, Polish, Portuguese, Russian, Simplified Chinese, Spanish, Swedish, Traditional Chinese, Turkish, Ukrainian  
**Other convenience:** Kensington lock  
**Plug & Play Compatibility:** DDC/CI, Mac OS X, sRGB, Windows 7, Windows 8

## Stand

**Tilt:** -5/20 degree

## Power

**On mode:** 15.52 W (typ.) (EnergyStar 6.0 test method)  
**Standby mode:** 0.5 W (typ.)  
**Off mode:** 0.3 W (typ.)  
**Power LED indicator:** Operation - White, Standby mode- White (blinking)  
**Power supply:** External, 100-240VAC, 50-60Hz

## Dimensions

**Product with stand (mm):** 511 x 400 x 212 mm  
**Product without stand (mm):** 511 x 318 x 36 mm  
**Packaging in mm (WxHxD):** 562 x 466 x 106 mm

## Weight

**Product with stand (kg):** 2.95 kg  
**Product without stand (kg):** 2.58 kg  
**Product with packaging (kg):** 4.50 kg

## Operating conditions

**Temperature range (operation):** 0°C to 40°C °C  
**Temperature range (storage):** -20°C to 60°C °C  
**Relative humidity:** 20%-80 %  
**Altitude:** Operation: +12,000ft (3,658m), Non-operation: +40,000ft (12,192m)  
**MTBF:** 30,000 hour(s)

## Sustainability

**Environmental and energy:** EnergyStar 6.0, EPEAT Silver, RoHS, Lead-free, Mercury Free  
**Recyclable packaging material:** 100 %

## Compliance and standards

**Regulatory Approvals:** BSMI, CCC, CE Mark, cETLus, FCC Class B, GOST, SASO, SEMKO, TCO 6.0, TUV/ISO9241-307, WEEE

## Cabinet

**Color:** BlackCherry  
**Finish:** Glossy

## What's in the box?

**Monitor with stand**  
**Cables:** VGA, Power  
**User Documentation**



\* This Philips display is MHL certified. However, in case your MHL device does not connect or work correctly, check with your MHL device FAQ or vendor directly for direction. The policy of your device manufacturer may require you to purchase their brand specific MHL cable or adapter in order to work  
 \* Requires optional MHL certified mobile device and MHL cable. (not included) Please check with your MHL device vendor for compatibility.  
 \* Standby/Off energy saving of ErP is not applicable for the MHL charging functionality  
 \* For complete list of MHL-enabled products refer to [www.mhlconsortium.org](http://www.mhlconsortium.org)  
 \* "IPS" word mark / trademark and related patents on technologies belong to their respective owners.  
 \* Response time value equal to SmartResponse