



LED-backlit LCD monitor with PowerSensor

- P Line
- 24 (23.8"/60.5 cm diag.)
- Full HD (1920 x 1080)

241P6QPJES/00

Brilliant performance from every angle

with a full HD AH-IPS display

The Philips PowerSensor AH-IPS LED display, which uses 65% post-consumer recycled plastics and PVC, BFR-free housing, is ideal for eco-friendly productivity

Benefits

Brilliant performance

- AH-IPS display for brilliant images with vivid colours
- Less eye fatigue with Flicker-Free technology
- SmartImage presets for easy optimised image settings

Designed for people

- SmartErgoBase enables user-friendly ergonomic adjustments
- Low bezel-to-table height for maximum reading comfort

Easy to experience

- Built-in stereo speakers for multimedia
- USB 3.0 Hub for convenient access and fast charging
- MHL technology for enjoying mobile content on a big screen
- DisplayPort connection for maximum visuals

Sustainable Eco-design

- LightSensor for the perfect brightness with minimal power
- PowerSensor saves up to 80% energy costs

PHILIPS

Features

AH-IPS technology



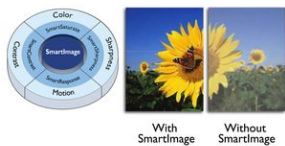
This latest Philips display uses advanced AH-IPS panels, resulting in superior colour reproduction, response time and power consumption. Unlike standard TN panels, AH-IPS panels show consistent colour even at 178-degree wide angles and in pivot mode. With remarkable performance, AH-IPS is best suited for applications demanding colour accuracy and consistent brightness at all times, such as photo retouching, graphics applications and web browsing.

Flicker-Free technology



Due to the way brightness is controlled on LED-backlit screens, some users experience flicker on their screen which causes eye fatigue. Philips Flicker-Free technology applies a new solution to regulate brightness and reduce flicker for more comfortable viewing.

SmartImage



SmartImage is an exclusive leading edge Philips technology that analyses the content displayed on your screen and optimises your display performance. This user-friendly interface allows you to select various modes, like Office, Photo, Movie, Game, Economy etc., to fit the application in use. Based on the selection, SmartImage dynamically optimises the contrast, colour saturation and sharpness of images and videos for ultimate display performance. The Economy mode option offers you major power savings. All in real time at the touch of a single button!

SmartErgoBase



The SmartErgoBase is a monitor base that delivers ergonomic display comfort and provides cable management. The user-friendly height, swivel, tilt and rotation angle adjustments of the base allow the monitor to be positioned for maximum comfort to help ease the physical strains of a long workday. In addition, cable management reduces cable clutter and keeps the workspace neat and professional.

Built-in stereo speakers

A pair of high-quality stereo speakers built into a display device. They may be visible front firing, or invisible down firing, top firing, rear firing etc. depending on model and design.

USB 3.0 Hub with FastCharge

Super Speed USB 3.0 deploys 5.0 Gbit/s transfer rate, which is about 10 times faster than USB 2.0 standard, significantly reducing data transfer time to save you time and money. With more bandwidth, super speed transfer rates, better power management and superior overall performance, USB 3.0 sets the latest global standard and allows you to use large capacity storage devices. Now you don't have to wait so long for devices to charge. New FastCharge enables quick charging to charge and go. USB 3.0 is also backward compatible with USB 2.0 devices.

MHL technology



Mobile High-Definition Link (MHL) is a mobile audio/video interface for directly connecting mobile phones and other portable devices to high-definition displays. An optional MHL cable allows you to simply connect your MHL-capable mobile device to this large Philips MHL display and watch your HD videos come to life with full digital sound. Now not only can you enjoy your mobile games, photos, movies or other apps on its big screen, you can simultaneously charge your mobile device so you never run out of power halfway.

LightSensor



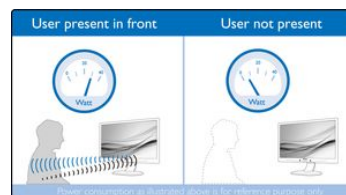
LightSensor uses a smart sensor to adjust the picture brightness depending on the light conditions in the room for the perfect picture with minimal power usage.

DisplayPort connection



DisplayPort is a digital link from PC to monitor without any conversion. With higher capabilities than DVI standard, it is fully capable to support up to 15 metre cables and 10.8 Gbps/sec data transfer. With this high performance and zero latency, you get the fastest imaging and refresh rates — making DisplayPort the best choice for not only general office or home use, but also for the more demanding gaming and films, video editing and more. It also keeps interoperability in mind via the use of various adapters.

PowerSensor



PowerSensor is a built-in 'people sensor' that transmits and receives harmless infrared signals to determine if the user is present and then automatically reduces monitor brightness when the user steps away from the desk, cutting energy costs by up to 80 percent and prolonging monitor life.

Specifications

Please note that this is a pre-sales leaflet. The contents of this leaflet reflect the best of our knowledge per date and country mentioned above. The contents of this leaflet are subject to change without notice. Philips does not accept any liability as to the contents of this leaflet.

Picture/Display

LCD panel type	AH-IPS LCD
Backlight type	W-LED system
Panel Size	23.8 inch/60.5 cm
Effective viewing area	527.04 (H) x 296.46 (V)
Aspect ratio	16:9
Optimum resolution	1920 x 1080 @ 60 Hz
Response time (typical)	5 ms (Grey to Grey)*
Brightness	250 cd/m ²
Contrast ratio (typical)	1000:1
SmartContrast	20,000,000:1
Pixel pitch	0.2745 x 0.2745 mm
Viewing angle	178° (H)/178° (V) @ C/R > 10
Picture enhancement	SmartImage
Display colours	16.7 M
Scanning Frequency	30 - 83 kHz (H) / 56 - 76 Hz (V)
MHL	1080P @ 60 Hz
sRGB	Yes

Connectivity

Signal Input	VGA (Analogue) DVI-D (digital, HDCP) DisplayPort MHL-HDMI (digital, HDCP)
USB	USB 3.0x4 (1 w/fast charging)*
Sync Input	Separate Sync Sync on Green
Audio (In/Out)	PC audio-in Headphone out

Convenience

Built-in Speakers	2 W x 2
User convenience	SmartImage Volume PowerSensor Menu Power On/Off
Control software	SmartControl Premium
OSD Languages	Brazil Portuguese Czech Dutch English Finnish French German Greek Hungarian Italian Japanese Korean Polish Portuguese Russian Simplified Chinese Spanish Swedish Traditional Chinese Turkish Ukrainian
Other convenience	Kensington lock VESA mount (100 x 100 mm)
Plug and Play Compatibility	DDC/CI Mac OS X sRGB Windows 8.1 / 8 / 7

Stand

Height adjustment	130 mm
Pivot	90 degree
Swivel	-175/+175 degree
Tilt	-5/20 degree

Power

ECO mode	14 W (typ.)
On mode	18.27 W (EnergyStar 6.0 test method)
Standby mode	< 0.3 W (typ.)
Off mode	Zero watts with AC switch
Power LED indicator	Operation - White Standby mode - White (flashing)
Power supply	100-240 VAC, 50-60 Hz Built-in

Dimensions

Product with stand (max height)	563 x 511 x 257 mm
Product without stand (mm)	563 x 351 x 53 mm
Packaging in mm (W x H x D)	619 x 525 x 184 mm

Weight

Product with stand (kg)	6.47 kg
Product without stand (kg)	3.98 kg
Product with packaging (kg)	9.13 kg

Operating conditions

Temperature range (operation)	0°C to 40°C °C
Temperature range (storage)	-20°C to 60°C °C
Relative humidity	20–80% %
Altitude	Operation: +12,000 ft (3658 m), Non-operation: +40,000 ft (12,192 m)
MTBF	30,000 hour(s)

Sustainability

Environmental and energy	PowerSensor LightSensor EnergyStar 6.0 EPEAT Gold* TCO edge RoHS
Recyclable packaging material	100 %
Post-consumer recycled plastic	65%
Specific Substances	PVC/BFR free housing Mercury free Lead free

Compliance and standards

Regulatory Approvals	CE Mark FCC Class B SEMKO cETLus CU-EAC TCO 6.0 TUV Ergo TUV/GS EPA PSB WEEE CECP PSE KC ICES-003 E-standby J-MOSS CCC
----------------------	---

Cabinet

Front bezel	Silver
-------------	--------

Rear cover Black
Foot Black
Finish Texture

Cables VGA, DVI, DP, Audio, Power
User Documentation yes

What's in the box?

Monitor with stand yes

- * This Philips display is MHL-certified. However, if your MHL device does not connect or work correctly, check with your MHL device FAQ or vendor directly for instructions. The policy of your device manufacturer may require you to purchase its brand-specific MHL cable or adapter in order for it to work
- * Requires optional MHL-certified mobile device and MHL cable (not included). Please check with your MHL device vendor for compatibility.
- * Standby/Off energy saving of ErP is not applicable for the MHL charging functionality
- * For a complete list of MHL-enabled products, refer to www.mhlconsortium.org
- * "AH-IPS" word mark/trademark and related patents on technologies belong to their respective owners.
- * EPEAT Gold is valid only where Philips registers the product. Please visit www.epeat.net for registration status in your country.
- * Response time value equal to SmartResponse



data subject to change
2016, November 16

Version: 6.0.1
EAN: 8712581724702

© 2016 Koninklijke Philips N.V.
All rights reserved.

Specifications are subject to change without notice. Trademarks are the property of Koninklijke Philips N.V. or their respective owners.

www.philips.com