

C9850 MFP

OKI
PRINTING SOLUTIONS



**Effortless workflow. Exceptional output.
Entirely embedded.**

C9850 MFP



A fast, versatile A3 colour smart MFP for office and professional use

Performance and versatility built in

Not only does the new C9850 MFP have all the powerful printing, copying, scanning and faxing functionality you've come to expect from OKI, but it comes with an embedded EFI Fiery Controller and EFI SendMe software. And that's something you won't find anywhere else.

Quite simply, the C9850 MFP for professional and office use does it all.

Let's start with the speed. A4 colour pages print or copy at the rate of 36 pages per minute (ppm); A3 at 19 ppm. Black and white is even faster. And it comes with high capacity toners and input trays so you can run it at maximum speeds, for longer, too. But even under the most punishing workloads, you'll find it's astonishingly reliable.

The quality is truly impressive. A combination of true 1200 x 1200 dpi print resolution, specially formulated microfine toners and our ProQ4800 multi-level printing technology delivers stunningly good colour with subtler shading and smoother gradations. What's more, the integrated EFI colour management tools ensure absolute precision, time after time.



21cm full colour touch-screen display.

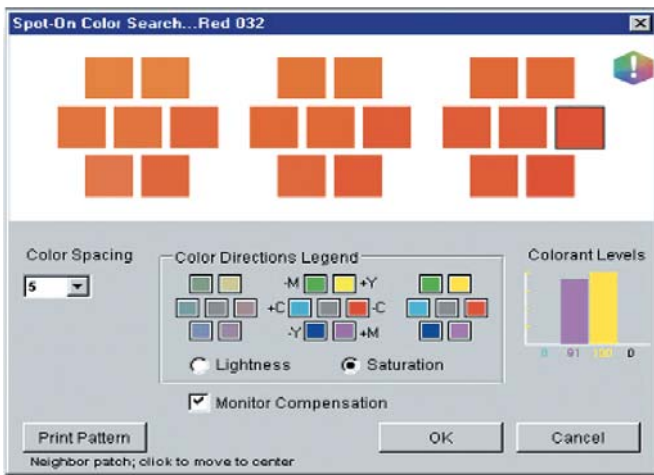
The C9850 MFP - Features at a glance

- Embedded EFI Fiery® System 8e Controller with Smart RIP technology for fast, automated colour workflow
- Embedded EFI SendMe document distribution and management software
- Fast, efficient colour printing and copying at speeds of up to 36ppm (40ppm for black and white) - ideal for large workgroups
- 21cm colour touch-screen operator panel for walk-up access to SendMe and print/copy/scan/fax functionality
- Fully-featured G3 (33.6 kbps) standard analog fax with speed-dial keys simplifies and speeds the sending of faxes
- A 100-sheet, single-pass duplex Automatic Document Feeder (ADF) scans both sides of a document simultaneously
- Reliable single-pass digital LED print technology handles up to 300gsm media and sheets up to A3+ as well as banners of up to 1200mm long
- True 1200 x 1200 dpi print resolution for clear, sharp text and graphics
- High Definition Color and ProQ4800 multilevel printing technology for increased colour depth and richer hues – even on ordinary office paper



Professional colour control

Print professionals and designers will love the embedded EFI Fiery System 8e controller and sophisticated colour management tools, such as Spot-On, which make it easy to deal with even the biggest workloads and tightest deadlines.

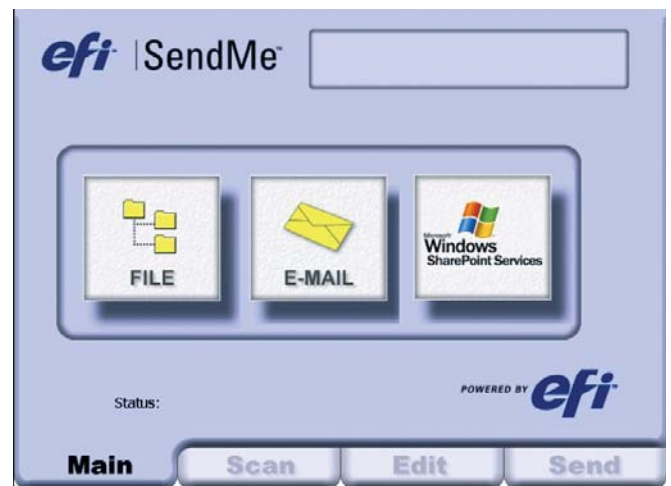


You also get EFI's powerful productivity features: Command Workstation, simultaneous Rip & Print, Hot Folders and Virtual Printers, mixed media support and dependable security - again, without having to invest in additional applications or servers. And with less intervention and superior performance everyone has more time to focus on strategic and revenue-generating goals, increasing efficiency across the office.



Fast, efficient office workflows

The embedded EFI SendMe lets you eliminate bottlenecks in many everyday office workflows. In one-step, directly at the MFP, you can scan documents, edit them, add metadata and send them directly to a document management system, such as Microsoft SharePoint. This one-step approach brings new levels of efficiency to your office workflows.



The true embedded nature of SendMe means there's no need to invest in additional servers, client software, or costly software consultants. Plus, it can be setup by in-house IT staff and requires minimal support.

The C9850 Colour and Mono Multifunction Product

		C9850 MFP
Order number		01193501
Speed & throughput	A4 Print speed	36ppm colour, 40ppm mono
	A3 Print speed	19ppm colour, 21ppm mono
	Time to first print	10.5 seconds colour, 9 seconds mono
	Warm up time	100 seconds or less from power on
	Processor speed	1GHz Intel Celeron M
Scan		Resolution: 600 x 600dpi; Speed: 36ppm colour, 40ppm mono (300 x 300dpi); Colour depth: Input 48-bit / Output 24-bit; Document input: 100 sheet Automatic Document Feeder (ADF), Flatbed scanner; Contrast: 11 Levels; Format: PDF, TIFF, JPEG Address book: LDAP*, internal address book for e-mail, SMB and FTP; Scan to: E-mail, FTP, Mailbox, Hold queue, Remote scan Fiery remote tool, TWAIN plug-in, SMB, Gateway Server, Document Management Systems**
Copy		First copy out: 12 seconds colour, 11 seconds mono; Speed: 36cpm colour, 40cpm mono; Resolution: Normal 300dpi, Hi-Resolution 600dpi; Reduction / Enlargement: Zoom 25-400%: 13 pre-set scaling formats and 1% increments for zoom; Maximum copies: 999
Fax		Connectivity: RJ11 x 1 (Line), PSTN, PBX Line; Speed: ITU-T G3(Super G3), 3 seconds/page; Fast dialing: 12 one touch dials, 500 speed dials; Groups: Upto 10 groups; Broadcast: Max 100; Page memory: Yes (dependant on Hard Disk Drive space)
Document output management	Utilities	Command WorkStation 4, Command WorkStation (Mac edition), Fiery Impose (Optional), EFI FreeForm, EFI Mailport (Windows 32-bit only), EFI Job Monitor, EFI Hot Folders, EFI SendMe, Fiery Remote Scan, Scansoft PaperPort SE11, Omnipage SE4
Touch screen	LCD	21cm backlit colour touch screen
	Key pad	12 numeric, main function buttons, start and stop
Print quality	Resolution	ProQ4800 Multi-level technology, 1200 x 1200dpi
	Colour matching	Fiery ColorWise Pro Tools, EFI ICC Colour Profiles, Colour calibration with optional EFI colour profiling kit
Typefaces	Printer fonts	86 scalable PCL fonts, 1 bitmap font, 10 TrueType fonts, 136 Adobe® PostScript Type 1 fonts, OCR A/B, USPS Barcode
Compatibility	Printer languages	PCL5c, PCL XL (Colour), Adobe® PostScript 3 with direct PDF Printing (v1.7)
	Connectivity	IEEE 1284 Bi-directional Parallel and Hi-Speed USB 2.0, 10Base-T/100Base-TX/1000Base-T Ethernet
	OS Compatibility ¹	Windows 2000 Professional (SP4 or later) / 2000 Server (SP4 or later) / 2000 Advanced Server (SP4 or later) / XP Professional (SP2 or later) / XP Home (SP2 or later) / XP Professional x64 (SP2 or later) / 2003 Server Standard (SP1 or later) / 2003 Server Enterprise (SP1 or later) / 2003 Server Datacenter (SP1 or later) / Server 2003 x64 (SP1 or later) / Vista (32-bit) / Vista (64-bit); Mac OS X PowerPC 10.3.9 - 10.5 / OS X Intel 10.4.4 - 10.5
	Network & protocols	10Base-T/100Base-TX/1000Base-T Ethernet Card with internal Web Server for printer and network card set-up and management. Includes POP3/APOP and SMTP Mail client for submission of print jobs and for alerts. ALL major network protocols supported - TCP/IP, Netware and EtherTalk. TCP/IP: -ARP, IP, ICMP, TCP, UDP, LPR, FTP, HTTP(IP), BOOTP, DHCP, SNMP, DNS, JetDirect protocols. Network 3.x, 4.x, 5.x and 6 with full NDS and NDPS support: -PServer, NDPS supported via dedicated OKI NDPS Gateway. EtherTalk: -ELAP, AARP, DDP, AEP, NBR, ZIP, RTMP, ATP, PAP.
Utility Suite ³		Print Control Client, Print Control Server ⁴ , PrintSuperVision.net ⁴ , Template Manager 3.0 ⁴ , Storage Device Manager ⁴ , Colour Swatch
Memory	RAM	1024MB
	Hard Disk Drive	40GB
Paper handling	Paper capacity	Standard trays: 2,120 sheets of 80gsm, Multi-purpose tray: 230 sheets of 80gsm, ADF: 100 sheets of 80gsm
	Paper sizes	Standard trays: A6, A5, A4, A3, A3+, Custom size: Width 100 - 328mm Length 148 - 457mm Multi-purpose tray: A6, A5, A4, A3, A3+, Custom size: Width 76 - 328mm Length 90 - 1,200mm Duplex: A6, A5, A4, A3 ADF: B5, B4, A5, A4, A3
	Paper weight	Standard trays: 64 to 216gsm, Multi-purpose tray: 55 to 300gsm, Duplex: 64 to 188gsm, ADF: 60 to 105gsm
	Duplex	Standard
	Paper feeding	Auto Media Detect, Auto Paper Tray Select, Tray Empty Sensor, Paper Low Sensor
	Paper output	500 sheets face down, 200 sheets face up
	Optional finisher	Stacks up to 1,000 sheets, 3 place stitching 50 sheets; up to 20 saddle-stitched booklets (40 pages)
Operating conditions	Temperature/humidity	10°C to 32°C (17°C to 27°C recommended) / 20% to 80% RH (50% to 70% RH recommended)
	Storage	-20°C to 45°C, 10% to 90% RH
Power requirements	Power supply	Single phase 220-240VAC, frequency 50Hz +/- 2Hz
	Power consumption	Typical 780W, Peak 1500W, Idle 200W (average), Power Save <55W
Noise level		Operating: 54dB(A) or less, Standby: 42dB(A) or less, Power save: 28dB(A) after 30 mins (background level)
Dimensions (HxWxD)		1426 x 672 x 889mm
Weight ⁵		193kg approx
Duty cycle	Printer duty	Maximum: 150,000 pages/month; Average: 5,000 - 15,000 pages/month
Warranty		Pan European 1 year on-site
Accessories	2nd/3rd paper tray	4 Tray Finisher ○ (01166701), Finisher-Punch Unit (2 hole) ○ (42872901), Finisher-Punch Unit (4 hole) ○ (42872903)
Optional Fiery accessories and SendMe connectors		Secure Erase Kit, EFI Impose, Colour Profile Kit, Microsoft SharePoint 2007, Captaris Alchemy, Captaris Rightfax, Interwoven Worksite, ZyLAB, Embedded OCR and others; Please contact your local OKI Printing Solutions representative for order number details and latest list of accessories

○ Optional (order number)

*1 Supported Servers: Lotus Domino 6.5, MS Active Directory (Windows 2000 Server), MS Exchange 5.5, 2000; *2 Via optional SendMe connectors;

*3 Check local OKI Printing Solutions website for latest driver releases and OS compatibility; ** Windows only; *5 Including all consumables

Consumables Information: For the protection of your printer, and in order to ensure that you benefit from its full functionality, this model has been designed to operate only with genuine OKI Printing Solutions toner cartridges. These can be identified by the OKI trademark. Any other toner cartridge may not operate at all, even if it is described as "compatible", and if it does work, your printer's performance and print quality may be degraded.

Description	Life* (pages)	Order numbers
Toners	15,000	Cyan: 42918915 Magenta: 42918914 Yellow: 42918913 Black: 42918916
Image drum	30,000	Cyan: 42918107 Magenta: 42918106 Yellow: 42918105 Black: 42918108
Transfer belt	100,000	42931603
Fuser unit	100,000	42931703
Waste toner box	30,000	42869403
Finisher staples	15,000	42937603

*All toners: A4 pages @ 5%. Printer shipped with 7,500 pages @ 5%. All Drums: A4 pages average life.

Specification subject to change without notice. All trademarks acknowledged.

OKI EUROPE LTD.

Blays House, Wick Road

Egham, TW20 0HJ

United Kingdom

T +44(0) 20 8219 2190

F +44(0) 20 8219 2199

WWW.OKIPRINTINGSOLUTIONS.COM

