

## PERFORMANCE

### Display Size

24"

### View Area

518.4x324 mm

### Panel

In-Plane Switching

### Aspect Ratio

16:10

### Resolution

1920x1200

### Pixel Pitch

0.27x0.27 mm

### Dot / Pixel Per Inch

94 dpi

### View Angle (H / V)

178° / 178°

### Response Time

7 ms

### Color Support

16.7 Million

### Refresh Rate

60 Hz

### Brightness

300 nits

### Contrast Ratio

1000:1

### Color Gamut

99% sRGB

### Anti-glare

Yes

### Curvature

None

### Camera

None

### Microphone

None

### Speakers

None

### Power Consumption (Typical / Maximum)

22W / 64W

### Power Adapter

Integrated

### Touchscreen

None

### Smart System

None

## DESIGN

### Stand

Tilt, Swivel, Pivot, Height Adjust Stand

### Case Color

Black

### Side Bezel Width

2 mm

### Dimensions with Stand (HxWxD)

497.4x533.2x260.4 mm / 19.58x20.99x10.25 inches

### Weight (Including Stand)

5.63 kg / 12.41 lbs.

### Mounting

Supports VESA mount 100mm

### ThinkCentre® M Series Support

None

## CONNECTIVITY

### USB Port

4x USB 3.0, 1x USB-B 3.0

### Video Connector

1x HDMI® 1.4, 1x DP 1.2, 1x VGA

### Network Connectivity

None

## SERVICE

### Base Warranty

3-year

## CERTIFICATIONS

### Environmental Certification

ENERGY STAR® Certified, TCO 7.0, TCO Edge 2.0, EPEAT™ Gold, ULE Gold, RoHS

### Ergonomic Certification

TÜV Rheinland® Eye Comfort

### Sync Technology

None

## SOFTWARE

### Operating System

Support Windows® 7, Windows 10

## ACCESSORIES

### Video Cables

DP cable, VGA cable

## MODEL

Announce Date : 2017-06-13

EAN /

UPC / : 0191376269280 / 191376269280 / None  
JAN



## Premium Care - Advanced Support from Real People. Real Fast.



### REAL PERSON

Choose how you want to reach us - through the phone, chat or email - our expert technicians will take care of you.



### REAL FAST

Highly trained technicians will provide you real-time solutions, whatever the issue, on your first contact. If needed, our team will schedule an onsite visit for the next business day.



### HASSLE FREE

'Getting started' and 'how-to' assistance for hardware and software. Easy solutions that are simple to reach - that's how Premium Care delivers you the ideal support experience.



### PC HEALTH CHECK

Free annual PC Health Check that allows our experts to spot issues before you do so they can resolve them quickly and help you avoid PC problems.

## Accidental Damage Protection - Protection of your PC from the unexpected.

Experience shows that a significant portion of devices may be damaged (and not covered under warranty) in the first three years. Lenovo's Accidental Damage Protection service covers accidents beyond the system warranty such as drops, spills, bumps and even electrical surges. Make sure your new device has maximum protection, avoid unplanned costs and get peace of mind.

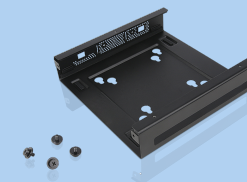
## Base Warranty – Included with the systems you purchase, default 1- or 3-year coverage window.

## Warranty Extensions & Upgrades – Service and protection that's right for your circumstances.

- Pick Up & Return Courier
- Onsite Support
- Technician Installed Customer
- Replaceable Unit Service
- International Warranty Upgrade

Lenovo may not offer the products, services or features discussed in this document in all regions. Lenovo may withdraw an offering at any time. Consult your local representative for information on offerings available in your area. Lenovo reserves the right to change specifications or other product information without notice. Lenovo is not responsible for photographic or typographical errors. Lenovo provides this publication "as is" without warranty of any kind, either express or implied, including the implied warranties of merchantability or fitness for a particular purpose.

## Recommended Accessories



### ThinkCentre Tiny VESA Mount II

4XFON03161

The ThinkCentre Tiny VESA Mount II is a unique design specific to house the Tiny PC while featuring the universal VESA mount configuration. The VESA standard enables this mount to attach to anything that is VESA comp...



### Kensington MicroSaver 2.0 Cable Lock from Lenovo

4XEON80914

Protect your device. Lenovo offers the latest standard in device security - the MicroSaver 2.0 Cable Lock From Lenovo. Engineered to be the smallest, strongest lock for laptops and other devices, the MicroSaver 2.0 re...

For a full list of accessories and services, please visit:  
<https://smartfind.Lenovo.com>

Lenovo

PSREF  
Product Specifications  
Reference