

CWT™ MTS

Mechanized Thru-ARC System



Key Features

MTS is an add-on Thru-ARC™ Tracking System[Ⓞ] designed to interface to a new or existing welding system and will operate as a standalone tracking system. It only requires the installation of the slides, clamp on current sensor and voltage sense cable with no direct interface to the welding power supply.

- » Torch Height (AVC or ACC), Centerline, Single Side (Right or Left) and Width Control Tracking Modes
- » System configurations are programmed through a 4" Touch Screen Operator Interface Panel (OIP)
- » Interfaces to existing logic controls using the Modbus[®] communications protocols (RTU or TCP/IP)
- » Micro Step Controls for X and Y axis motion control
- » Remote user I/O and control signals
- » Can be used with GMAW, GTAW, SAW and GMAW-P welding processes

Notes: Ⓞ Thru-ARC™ Seam Tracking requires welding arc isolation.

Connectivity »

MTS Lan Port - RJ45 Modbus[®] TCP/IP Ethernet, 10Base-T or 100Base-TX (auto-sensing)

OIP Lan Port - RJ45 Ethernet 10Base-T or 100Base-TX (auto-sensing)

OIP USB Port - USB 2.0 connection for program updates

Benefits »

No additional sensors

Maintains true arc position

Provides adaptive fill capabilities

Simple retrofit to existing fixtures

No special maintenance required

Lower cycle time and increase productivity

Improve weld quality and consistency

Reduce scrape parts

PRODUCT SPECIFICATIONS

Product Name	Product Number	Input Power	Stroke Length in (mm)	Load Capacity lbs (kg) @ in (mm) from faceplate	Travel Speed ips (mm/sec)	Position Accuracy in (mm)	Position Resolution in (mm)	Dimensions	Operating Temperature	Net Weight lbs (kg)
MTS Mechanized Thru-ARC System	SOA5135	115vac @ 1.0 amps						8.00"H x 10.50"W x 4.60"D (203mm x 267mm x 117mm)	32° to 122° F (0° to 50° C)	17 (7.7)
HSA-2003 3" Horizontal Slide System	SOA5137	28vdc @ 4.2 amps	3.00 (76.2)	35 (15.9) @ 6 (152.4)	0.05 (1.3) to 6.00 (152.4)	0.004 (0.1)	0.001 (0.03)	8.43"H x 11.67"W x 3.66"D (214mm x 296mm x 93mm)	-30° to 150° F (-34° to 65° C)	14.5 (6.6)
VSA-2006BH 6" Vertical Slide System	SOA5138	28vdc @ 5.5 amps	6.00 (152.4)	200 (90.7) @ 6 (152.4)	0.01 (0.3) to 0.75 (19.1)	0.004 (0.1)	0.002 (0.05)	18.70"H x 8.25"W x 5.88"D (475mm x 210mm x 149mm)	-30° to 150° F (-34° to 65° C)	25 (11.3)

MTS Mechanized Thru-ARC System (SOA5135)



What's Included

- MTS Controller
- Voltage Sense Cable
- 1000 Amp Current Sensor and Cable

The embedded micro controller assembly provides two micro step controllers for X and Y Axis motion control, six isolated 24 VDC inputs, four isolated solid state relay outputs, one isolated RS422 terminal serial control port, and TTL level encoder input.

System configurations are programmed through a 4" touch screen operator interface panel and interfaces to existing logic controls using the Modbus® communications protocols (RTU or TCP/IP).

Specifications

Relay Outputs	Optically isolated 48 vdc @ 0.1 amp solid state relays
Logic Inputs	Optically isolated 16 – 24 vdc @ 10 mA
Ethernet Port	RJ45 Ethernet 10Base-T or 100Base-TX (auto-sensing)
Compatibility	Ethernet: Version 2.0/IEEE 802.3 (electrical), Ethernet II frame type
Protocols	ARP, UDP/IP, TCP/IP, Telnet, ICMP, SNMP, DHCP, BOOTP, TFTP, Auto IP, SMTP, and HTTP
Security	Password protection, locking feature

HSA-2003 3" Horizontal Slide System (SOA5137)



What's Included

- HSA-2003 Slide
- Motor Cable 25ft
- Mounting Hardware

The HSA-2003 is a precision linear motion control device that provides exacting horizontal movement for cross-seam positioning and / or torch oscillation. The high strength timing belt direct drive design provides smooth operation, superior response and excellent repeatability with ability to change direction rapidly.

Mounting hardware that is designed to install the Lincoln Electric K2312-2 MAXsa 29 Feed Head directly to this slide.

VSA-2006BH 6" Vertical Slide System (SOA5138)



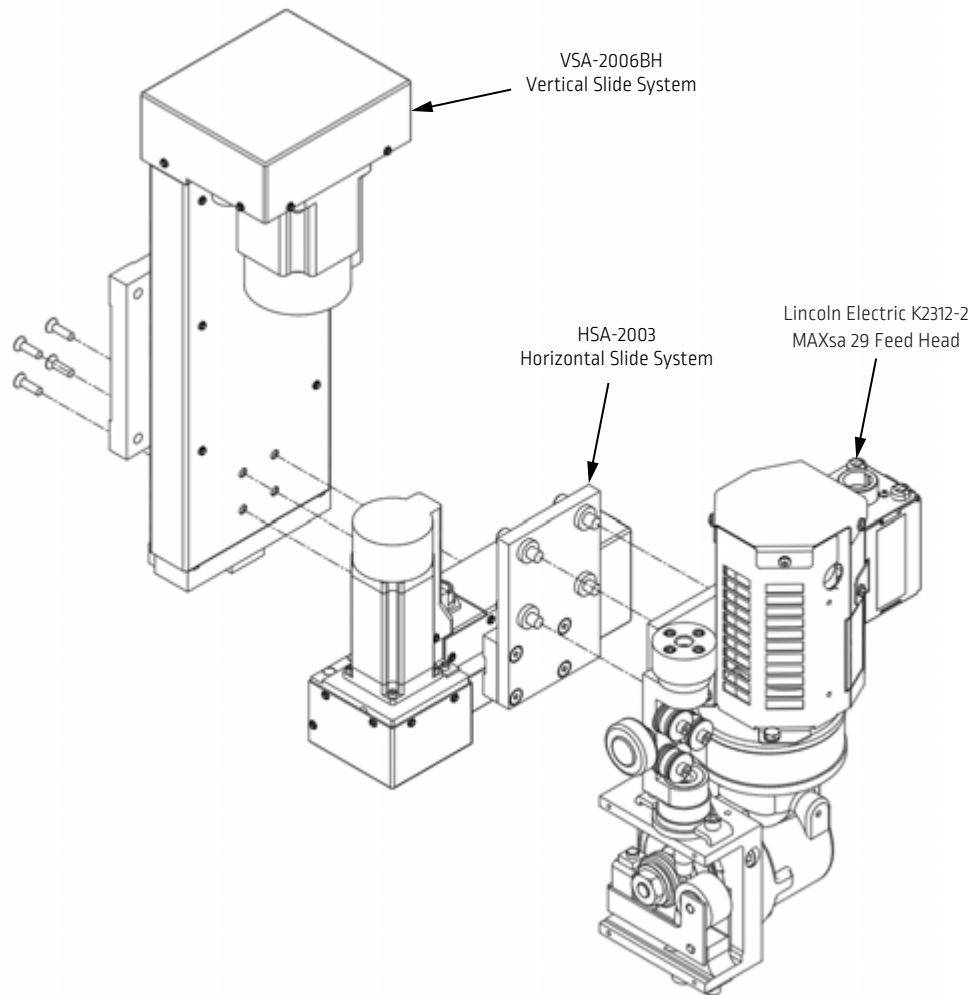
What's Included

- VSA-2006BH Slide
- Motor Cable 25ft
- Mounting Hardware

The VSA-2006BH Vertical Slide is a precision linear motion control device that provides exacting vertical movement for torch-to-work positioning. The ball screw drive design with linear ball rail system provides high load carrying capability, smooth operation, superior response and excellent repeatability.

Mounting hardware that is designed to install the HSA-2003 directly to this slide.

For additional slide configurations email sales@cwelddtech.com or call 713-462-2118.



The operation of welding fume control equipment is affected by various factors including proper use and positioning of the equipment, maintenance of the equipment and the specific welding procedure and application involved. Worker exposure level should be checked upon installation and periodically thereafter to be certain it is within applicable OSHA PEL and ACGIH TLV limits.

CUSTOMER ASSISTANCE POLICY

The business of The Lincoln Electric Company[®] is manufacturing and selling high quality welding equipment, consumables, and cutting equipment. Our challenge is to meet the needs of our customers and to exceed their expectations. On occasion, purchasers may ask Lincoln Electric for information or advice about their use of our products. Our employees respond to inquiries to the best of their ability based on information provided to them by the customers and the knowledge they may have concerning the application. Our employees, however, are not in a position to verify the information provided or to evaluate the engineering requirements for the particular weldment. Accordingly, Lincoln Electric does not warrant or guarantee or assume any liability with respect to such information or advice. Moreover, the provision of such information or advice does not create, expand, or alter any warranty on our products. Any express or implied warranty that might arise from the information or advice, including any implied warranty of merchantability or any warranty of fitness for any customers' particular purpose is specifically disclaimed.

Lincoln Electric is a responsive manufacturer, but the selection and use of specific products sold by Lincoln Electric is solely within the control of, and remains the sole responsibility of the customer. Many variables beyond the control of Lincoln Electric affect the results obtained in applying these types of fabrication methods and service requirements.

Subject to Change – This information is accurate to the best of our knowledge at the time of printing. Please refer to www.lincolnelectric.com for any updated information.