

 **Lincoln**[®] PRODUCTS

SINKS

SECTION 11



Vitreous China Lavatories Drop-In

SINKS

SECTION 11 • PAGE 1

American Standard® Aqualyn™

Self-rimming, high-gloss, stain-resistant lavatory. Oval design with tapered edges. ADA compliant. One-Year limited warranty.



STOCK#	PACK	CASE	DESCRIPTION	MFR#	UPC#
021010	1		20" X 17" 3-HOLE 4" CC WHITE	0476.028.020	033056025222
021011	1		20" X 17" 3-HOLE 8" CC WHITE	0475.020.020	033056024744

American Standard® Rondalyn™

Self-rimming, high-gloss, stain-resistant lavatory. European-styled round with interior oval bowl. ADA compliant. One-Year limited warranty.



STOCK#	PACK	CASE	DESCRIPTION	MFR#	UPC#
021000	1		19" 3-HOLE 4" CC WHITE	0491.019.020	033056022306

American Standard® Studio™

Self-rimming, high-gloss, stain-resistant lavatory. Rectangular design. ADA compliant. One-Year limited warranty.



STOCK#	PACK	CASE	DESCRIPTION	MFR#	UPC#
021002	1	20	21" X 17-3/4" 1-HOLE WHITE	0643.001.020	791556041332
021003	1	20	21" X 17-3/4" 3-HOLE 8" CC WHITE	0643.008.020	791556041349

Kohler® Bryant

Self-rimming. Oval with overflow. ADA compliant. One-Year limited warranty.



STOCK#	PACK	CASE	DESCRIPTION	MFR#	UPC#
043483	1	1	20" X 16" SINGLE-HOLE WHITE	K2699-1-0	885612000910
043484	1	1	20" X 16" 3-HOLE 4" CC WHITE	K2699-4-0	885612000989



Self-rimming. Round with overflow. ADA compliant. One-Year limited warranty.

043451	1	20	18-7/8" 3-HOLE 8" CC WHITE	K2714-8-0	885612001740
--------	---	----	----------------------------	-----------	--------------

Kohler® Memoirs® Stately

Self-rimming. Rectangle with overflow. ADA compliant. One-Year limited warranty.



STOCK#	PACK	CASE	DESCRIPTION	MFR#	UPC#
043465	1		23" X 18" SINGLE-HOLE WHITE	K2337-1-0	650531277886

Kohler® Pennington®

Self-rimming. Oval with overflow. ADA compliant. One-Year limited warranty.



STOCK#	PACK	CASE	DESCRIPTION	MFR#	UPC#
044474	1		20" X 17" 3-HOLE 8" CC WHITE	K2196-8-0	040688055411

Kohler® Portrait®

Self-rimming. With overflow. ADA compliant. One-Year limited warranty.



STOCK#	PACK	CASE	DESCRIPTION	MFR#	UPC#
043440	1		22" X 19" 3-HOLE 4" CC WHITE	K2189-4-0	040688127002
043441	1		22" X 19" 3-HOLE 8" CC WHITE	K2189-8-0	040688126838

PROFLO® Rockaway

Self rimming lavatory. Oval with concealed front overflow drain. Can be mounted for ADA Installation. One-Year limited warranty.



STOCK#	PACK	CASE	DESCRIPTION	MFR#	UPC#
020450	1	45	20" X 17" 3-HOLE 4" CC WHITE	PF20174WH	781889074619
020550	1		20" X 17" 3-HOLE 4" CC BISCUIT	PF20174BS	781889109731
020451	1	45	20" X 17" 3-HOLE 8" CC WHITE	PF20178WH	781889074626

Vitreous China Lavatories Drop-In and Undermount

PROFLO® Rockaway (Continued)

Self rimming lavatory. Round with concealed front overflow drain. Can be mounted for ADA Installation. One-Year limited warranty.



STOCK#	PACK	CASE	DESCRIPTION	MFR#	UPC#
020454	1	28	19" SINGLE-HOLE WHITE	PF191RWH	781889109694
020455	1	30	19" 3-HOLE 4" CC WHITE	PF194RWH	781889074596
020555	1		19" 3-HOLE 4" CC BISCUIT	PF194RBS	781889109700
020456	1	30	19" 3-HOLE 8" CC WHITE	PF198RWH	781889074602

Undermount

American Standard® Ovalyn™

High gloss, stain resistant. Unglazed rim. Oval with front overflow. Supplied with mounting kit and template. One-Year limited warranty. ADA compliant.



STOCK#	PACK	CASE	DESCRIPTION	MFR#	UPC#
021012	1		19-1/4" X 16-1/4" WHITE	0496.221.020	033056558324

American Standard® Studio®

High gloss, stain resistant. Unglazed rim. Rectangular with front overflow. Supplied with mounting kit and template. ADA compliant. One-Year limited warranty.



STOCK#	PACK	CASE	DESCRIPTION	MFR#	UPC#
021020	1		21-1/4" X 15-1/4" WHITE	0614.000.020	033056565506

Kohler® Caxton®

Unglazed Underside. Oval with front overflow. Includes clamp assembly. ADA compliant. One-Year limited warranty.



STOCK#	PACK	CASE	DESCRIPTION	MFR#	UPC#
043460	1	30	17" X 14" WHITE - OVAL	K2210-0	040688056111
043485	1	1	20-5/16" X 15-3/4" WHITE - RECTANGLE	K20000-0	885612556028

Kohler® Ladena®

Unglazed Underside. Rectangle with front overflow. Includes clamp assembly. ADA compliant. One-Year limited warranty.



STOCK#	PACK	CASE	DESCRIPTION	MFR#	UPC#
043461	1		18" X 12" WHITE	K2214-0	040688057095

PROFLO® Comstock

Oval with concealed front overflow. Flattened back rim for easier installation. Can be mounted for ADA Installation. One-Year limited warranty.



STOCK#	PACK	CASE	DESCRIPTION	MFR#	UPC#
020460	1	30	17" X 14" WHITE	PF1714UAWH	781889244128

PROFLO® Norris

Rectangle with front overflow. Mounting clips included. Can be mounted for ADA Installation. One-Year limited warranty.



STOCK#	PACK	CASE	DESCRIPTION	MFR#	UPC#
020459	1		18" X 12" WHITE	PF1812UWH	781889282205

PROFLO® Stedman

Rectangle with front overflow. Mounting clips included. Can be mounted for ADA Installation. One-Year limited warranty.



STOCK#	PACK	CASE	DESCRIPTION	MFR#	UPC#
020487	1	30	17" X 13" WHITE	PF1713UWH	781889300923

Vitreous China Lavatories Wall Mount and Pedestal

SINKS



American Standard® Declyn™

Rectangle with rear overflow. Soap depression and splash-back design. Mounting Hardware Included. ADA compliant. One-Year limited warranty.

STOCK#	PACK	CASE	DESCRIPTION	MFR#	UPC#
021032	1		19" X 17" 3-HOLE 4" CC WHITE	0321.026.020	033056042304



American Standard® Lucerne™

Front overflow. With a D shaped bowl. Self-draining deck area with contoured back and side splash shields. Mounting hardware included. ADA compliant. One-Year limited warranty.

STOCK#	PACK	CASE	DESCRIPTION	MFR#	UPC#
021030	1		20" X 18" 3-HOLE 4" CC WHITE	0355.012.020	033056043998
021031	1		20" X 18" 3-HOLE 8" CC WHITE	0356.015.020	033056044018



PROFLO® Wall Hung

Anti-splash rim. Rectangle with concealed front overflow. Wall mount bracket included. ADA compliant. One-Year limited warranty.

STOCK#	PACK	CASE	DESCRIPTION	MFR#	UPC#
020466	1	20	19" X 17" 3-HOLE 4" CC WHITE	PF5414WH	781889167915



PROFLO® Wall Hung

High back splash. Rectangle with concealed front overflow. Concealed arm carrier connection. Wall mount bracket included. ADA compliant. One-Year limited warranty.

STOCK#	PACK	CASE	DESCRIPTION	MFR#	UPC#
020467	1	16	20" X 18" 3-HOLE 4" CC WHITE	PF5514WH	781889167922
020468	1	20	20" X 18" 3-HOLE 8" CC WHITE	PF5518WH	781889167939

Pedestal



Kohler® Wellworth®

Generous deep basin. Oval with overflow. One-Year limited warranty.

STOCK#	PACK	CASE	DESCRIPTION	MFR#	UPC#
043407	1		22" X 18" 3-HOLE 8" CC BASIN WHITE	K2296-8-0	087206331077
043400	1		PEDESTAL ONLY WHITE	K2019-0	040688616360



PROFLO® Alder Creek

Pedestal conceals all plumbing. Integral self-draining faucet deck. High gloss and stain resistant surface. Mounting bracket included. One-Year limited warranty.

STOCK#	PACK	CASE	DESCRIPTION	MFR#	UPC#
020480	1	8	25" X 20" 3-HOLE 4" CC BASIN WHITE	PF14104WH	781889064962
020481	1		25" X 20" 3-HOLE 8" CC BASIN WHITE	PF14108WH	781889051528
020482	1		PEDESTAL FOR 14104 & 14108 WHITE	PF1011WH	781889051566



PROFLO® Lisbon Valley

Pedestal conceals all plumbing. Integral self-draining faucet deck. High gloss and stain resistant surface. Mounting bracket included. One-Year limited warranty.

STOCK#	PACK	CASE	DESCRIPTION	MFR#	UPC#
020470	1	16	24" X 20" 3-HOLE 4" CC BASIN WHITE	PF4004WH	781889160060
020475	1	20	24" X 20" 3-HOLE 8" CC BASIN WHITE	PF4008WH	781889160084
020469	1		20" X 18" 3 HOLE 4" CC BASIN WHITE	PF5004WH	781889160077
020471	1	36	PEDESTAL FOR 4004, 4008 & 5004 WHITE	PF1045WH	781889160015

Vitreous China Lavatories - Pedestal



PROFLO® Willow Creek

Pedestal conceals all plumbing. Integral self-draining faucet deck. Twin soap depressions. High gloss and stain resistant surface. Mounting bracket included. One-Year limited warranty.

STOCK#	PACK	CASE	DESCRIPTION	MFR#	UPC#
020483	1		19" X 17" 3-HOLE 4" CC BASIN WHITE	PF1131WHP	781889007365
020484	1		PEDESTAL FOR 1131 WHITE	PF1103WH	781889007372

Porcelain Enameled Steel Lavatories • Drop-In



PROFLO® Getchell Series

Self-rimming lavatory. Concealed front overflow drain. Can be mounted for ADA Installation. One-Year limited warranty.

STOCK#	PACK	CASE	DESCRIPTION	MFR#	UPC#
020452	1	72	20" X 17" OVAL 3-HOLE 4" CC WHITE	PFS20174WH	781889204986
020457	1	72	19" ROUND 3-HOLE 4" CC WHITE	PFS194RWH	781889204955



Kohler® Tahoe®

Self-rimming. Rectangle with overflow ferrule. ADA compliant. Lifetime limited warranty

STOCK#	PACK	CASE	DESCRIPTION	MFR#	UPC#
043490	1		21" X 19" 3-HOLE 4" CC WHITE	K2895-4-0	040688619934

Fireclay Lavatories Pedestal



Kohler® Memoirs® Classic

Ceramic fireclay construction takes a shine easily, resists scratching and fading. Rectangle with overflow. One-Year limited warranty.

STOCK#	PACK	CASE	DESCRIPTION	MFR#	UPC#
043405	1		24" X 20" 3-HOLE 4" CC BASIN WHITE	K2239-4-0	040688676227
043406	1		24" X 20" 3-HOLE 8" CC BASIN WHITE	K2239-8-0	040688676388
043401	1		PEDESTAL ONLY WHITE	K2267-0	040688675763

Stainless Steel Kitchen Sinks Drop-In



Elkay® Celebrity® - Single Bowl

Self Rimming. Full Spray Sound Deadening, Type 304 Stainless Steel. Limited lifetime warranty.

STOCK#	PACK	CASE	DESCRIPTION	MFR#	UPC#
Bowl size: 21" x 15-3/4" x 7". Minimum cabinet size 30".					
020950	1		25" x 21-1/4" X 7" 3-HOLE 20 GAUGE	CR25214	094902003825
Bowl size: 28" x 15-3/4" x 7". Minimum cabinet size 36".					
020951	1		33" X 22" X 7" 4-HOLE 20 GAUGE	CRS33224	094902003627

Stainless Steel Kitchen Sinks

Drop-In (Continued)



Elkay® Dayton® - Bar Sink

Self Rimming. 300 series stainless steel with a satin finish. Fully undercoated to dampen sound and prevent condensation. Minimum cabinet size: 18". ADA compliant. Limited lifetime warranty.

STOCK#	PACK	CASE	DESCRIPTION	MFR#	UPC#
020980	1		15" X 15" X 5-3/16" 2-HOLE 23 GAUGE	D115152	094902008349



Elkay® Dayton® - Single Bowl

Self Rimming. Formed of nickel bearing stainless steel. Fully undercoated to dampen sound and prevent condensation. Limited lifetime warranty.

STOCK#	PACK	CASE	DESCRIPTION	MFR#	UPC#
020981	1		17" X 19" X 6-1/8" 2-HOLE 22 GAUGE	D117192	094902008417
020982	1		25" X 21-1/4" X 6-9/16" 3-HOLE 22 GAUGE	D125213	094902008509



Elkay® Dayton® - Double Bowl

Self Rimming. Formed of nickel bearing stainless steel. Fully undercoated to dampen sound and prevent condensation. Limited lifetime warranty.

STOCK#	PACK	CASE	DESCRIPTION	MFR#	UPC#
Bowls size: 14" x 15-3/4" X 6-3/8". Minimum cabinet size: 36". ADA compliant.					
020983	1		33" X 21-1/4" X 6-9/16" 3-HOLE 22 GAUGE	D233213	094902008714
Bowl size large: 14" x 15-3/4" X 8" . Bowl size small: 13-1/2" x 18" X 8". Minimum cabinet size: 36".					
020984	1		33" X 22" X 8-3/16" 3-HOLE 18 GAUGE	DXR250R3	094902365893
020987	1		33" X 22" X 8-3/16" 4-HOLE 18 GAUGE	DXR250R4	094902365909
Bowls size: 14" X 15-3/4" X 8". Minimum cabinet size: 36".					
020989	1		33" X 22" X 8-3/16" 4-HOLE 18 GAUGE	DXR33224	094902008233



PROFLO® Bealeton - Bar Sink

Self-rimming. Sink clips included for countertops up to 3/4" thick. Under spray coating and pads for sound deadening and insulation. Bowl Size: 12" x 10" x 5-1/2". Minimum cabinet size: 18". ADA compliant when installed to ADA guidelines. Limited lifetime warranty.

STOCK#	PACK	CASE	DESCRIPTION	MFR#	UPC#
020801	1	5	15" X 15" X 5-1/2" 2-HOLE 22 GAUGE	PFSR151562	781889292020

Self-rimming. Sink clips included for countertops up to 3/4" thick. Bowl size: 14" X 14" X 6-1/8". Under spray coating and pads for sound deadening and insulation. Minimum cabinet size 21". Limited lifetime warranty.

020805	1	5	17" X 19" X 6-1/8" 2-HOLE 22 GAUGE	PFSR171962	781889217863
--------	---	---	------------------------------------	------------	--------------



PROFLO® Bealeton - Single Bowl

Self-rimming. Sink clips included for countertops up to 3/4" thick. Bowl size: 21-1/4" x 15-3/4" x 8-1/8". Under spray coating and pads for sound deadening and insulation. Minimum cabinet size 30". Limited lifetime warranty.

STOCK#	PACK	CASE	DESCRIPTION	MFR#	UPC#
020811	1	5	25" X 22" X 8" 4-HOLE 20 GAUGE	PFSR252284A	781889292006

Self-rimming. Sink clips included for countertops up to 3/4" thick. Bowl size: 29-7/16" x 16-1/4" x 8". Under spray coating and pads for sound deadening and insulation. Limited lifetime warranty.

020806	1	5	33" X 22" X 8" 4-HOLE 18 GAUGE	PFSR1B332284	781889342404
--------	---	---	--------------------------------	--------------	--------------

Self-rimming. Sink clips included for countertops up to 3/4" thick. Bowl size 21-1/4" x 15-3/4", bowl depth 7-1/8". Drain diameter 3-1/2". Minimum cabinet size 30". Under spray coating and pads for sound deadening and insulation.

020821	1	5	25" X 22" X 7" 3-HOLE 20 GAUGE	PFSR252273	781889244470
020823	1		25" X 22" X 7" 4-HOLE 20 GAUGE	PFSR252274	781889244487

Stainless Steel Kitchen Sinks Drop-In & Undermount

PROFLO® Bealeton - Double Bowl



Self-rimming. Sink clips included for countertops up to 3/4" thick. Under spray coating and pads for sound deadening and insulation. Limited lifetime warranty.

STOCK#	PACK	CASE	DESCRIPTION	MFR#	UPC#
020822	5	20	33" X 22" X 6" 4-HOLE 22 GAUGE	PFSR332264	781889244524

Bowls size: 14" x 15-3/4" x 6". Minimum cabinet size 30". ADA compliant when installed to ADA guidelines.

Undermount

Elkay® Dayton® - Single Bowl



Formed of nickel bearing stainless steel. Fully undercoated to dampen sound and prevent condensation. Bowl size: 21" x 15-3/4" x 8". Minimum cabinet size 27". Limited lifetime warranty.

STOCK#	PACK	CASE	DESCRIPTION	MFR#	UPC#
020985	1		23-1/2" X 18-1/4" X 8" 18 GAUGE	DXUH2115	094902404103

American Standard® Portsmouth™ - Double Bowl



Offset double bowl kitchen sink. 9" and 7-1/2" bowl depths, left bowl size: 15-1/2" wide 18-1/2" front to back, 9" deep. Right bowl size: 12-3/4" wide 16-1/4" front to back 7-1/2" deep. Undermount installation, 36" cabinet required. Includes: (2) 9028000.075 waste fittings, 791676-100.0070A undermount sink clips, side and bottom sound deadening pads with undercoating, cutout template and instructions included. Limited lifetime warranty.

STOCK#	PACK	CASE	DESCRIPTION	MFR#	UPC#
020903	1		31" X 20" X 9" 18 GAUGE	18CR.9322100S.075	791556100954

Elkay® Crosstown – Single Bowl



Single bowl undermount sink. Bowl size: 17" x 17" x 9". Polished satin finish. Rear Center drain placement, and sound guard.

STOCK#	PACK	CASE	DESCRIPTION	MFR#	UPC#
020956	1		19" X 19" X 9" 18 GAUGE	ECTRU17179T	094902109800

Single bowl undermount sink. Bowl size: 30" x 17" x 9". Polished satin finish. Rear right drain placement, and sound guard.

STOCK#	PACK	CASE	DESCRIPTION	MFR#	UPC#
020957	1		32" X 19" X 9" 18 GAUGE	ECTRU30179RT	094902109886

Elkay® Dayton® - Double Bowl



300 series stainless steel with a radiant satin finish. Fully undercoated to dampen sound and prevent condensation. Bowls size: 14" x 15-3/4" x 8". Minimum cabinet size 36". Limited lifetime warranty.

STOCK#	PACK	CASE	DESCRIPTION	MFR#	UPC#
020986	1		31-3/4" X 18-1/4" X 8" 18 GAUGE	DXUH3118	094902404110

Elkay® Lustertone® - Double Bowl



304 nickel bearing stainless steel. Sound deadening. Lustrous highlighted satin finish. Bowls size: 16" x 13-1/2" x 7-7/8". Minimum cabinet size 36". Limited lifetime warranty.

STOCK#	PACK	CASE	DESCRIPTION	MFR#	UPC#
020954	1		30-3/4" x 18-1/2" x 7-7/8" 18 GAUGE	ELUH3118	094902270432

Stainless Steel Kitchen Sinks Undermount & Dual Mount

SINKS



PROFLO® Plomosa - Double Bowl

Type 301 nickel bearing stainless steel. Sound absorption pads and coating to minimize vibration and sound and increase durability. Limited lifetime warranty.

STOCK#	PACK	CASE	DESCRIPTION	MFR#	UPC#
Bowl Size Large: 13-1/2" x 18" x 10". Bowl Size Small: 14" x 15-3/4" x 8". Minimum Cabinet Size: 36".					
020782	12	16	31-3/4" X 20-1/2" x 10" 18 GAUGE	PFUC907	781889115442

Dual Mount



American Standard® Edgewater™ - Single Bowl

Single bowl 30-1/4" wide, 16-1/2" front to back, 9" deep bowl. Zero radius corners. Dual mount (top or under) installation. Single hole. Side and bottom sound pads with full spray insulation. Minimum cabinet size 36". Includes: 7434000.075 bottom grid, 9028000.075 waste fitting, 791637-100.0070A top mount sink clips & 791676-100.0070A under-mount sink clips.

STOCK#	PACK	CASE	DESCRIPTION	MFR#	UPC#
020901	1		33" X 22" X 9" SINGLE-HOLE 18 GAUGE	18SB.9332211.075	791556101142



American Standard® Pekoe™ - Single Bowl

Single bowl apron sink. 30" wide, 16-9/16" front to back, 9" deep Bowl. 10mm radius corners. Undermount or flush mount installation, Features SoundSecure+™ Sound Pads, Features StoneLock™ Undercoating. 36" cabinet required. Includes: 7434000.075 bottom grid, 9028000.075 waste fitting, cutout template, installation instructions. Limited lifetime warranty.

STOCK#	PACK	CASE	DESCRIPTION	MFR#	UPC#
020902	1		33" X 22" X 9" 18 GAUGE	18SB.9332200A.075	791556107281



Elkay® Crosstown® - Double Bowl

Design allows the sink to be installed as drop-in or undermount sink. Polished satin finish. Sound guard under coating. Slim rim. Bowls size: 14-3/4" x 16-3/4" x 9". Minimum cabinet size: 36". Includes (1) bottom sink grid. Undermount installation kit is not included. Limited lifetime warranty.

STOCK#	PACK	CASE	DESCRIPTION	MFR#	UPC#
020955	1		33" X 22" X 9" 4-HOLE 18 GAUGE	ECTSR33229BG4	094902017860



Elkay® Dayton - Single Bowl

Dual mount sink. Bowl size: L: 24", W: 16" and H: 8". Elite Satin finish. Center drain placement, and bottom only pads.

STOCK#	PACK	CASE	DESCRIPTION	MFR#	UPC#
020988	1		27" X 22" X 8" 4-HOLE 18 GAUGE	DSESR127224	094902777290



PROFLO® Sault - Single Bowl

Dual mount sink. Self-rimming sink clips included for countertops up to 3/4" thick. Bowl size 21" x 16", bowl depth 9". Drain diameter 3-1/2". Under spray coating and pads for sound deadening and insulation. Limited lifetime warranty.

STOCK#	PACK	CASE	DESCRIPTION	MFR#	UPC#
020831	1		33" X 22" X 9" 4-HOLE 18 GAUGE	PFDM1B332294	781889345245



Dual mount single bowl. Self-rimming sink clips included for countertops up to 3/4" thick. Overall size 25" x 22", Bowl size 28.7" x 16", Bowl depth 9", Drain diameter 3-1/2", Under spray coating and pads for sound deadening and insulation. Limited lifetime warranty.

STOCK#	PACK	CASE	DESCRIPTION	MFR#	UPC#
020830	1		25" X 22" X 9" 4-HOLE 18 GAUGE	PFDM1B252294	781889345214

Stainless Steel Kitchen Sinks Dual Mount



PROFLO® Sault - Double Bowl

Self-rimming. Sink clips included for countertops up to 3/4" thick. Bowl size 28.7" x 16", bowl depth 9". Drain diameter 3-1/2". Under spray coating and pads for sound deadening and insulation. Limited lifetime warranty.

STOCK#	PACK	CASE	DESCRIPTION	MFR#	UPC#
020832	1		33" X 22" X 9" 3-HOLE 18 GAUGE	PFDM2B332293	781889345276

Cast Iron Kitchen Sinks Drop-In



Kohler® Cape Doty® - Single Bowl

Large single bowl. Crafted from enameled cast iron. 33-inch minimum base cabinet width. Bowl size: 29" X 15" X 9". Lifetime limited warranty.

STOCK#	PACK	CASE	DESCRIPTION	MFR#	UPC#
043480	1		33" X 22" X 9-5/8" 4-HOLE WHITE	K5863-4-0	087206999895



Kohler® Executive Chef™ - Double Bowl

The large/medium bowls allow you to keep clean and dirty dishes separate while offering plenty of room for oversized pots and pans. Large Bowl size: 16" X 19" X 9-3/4". Medium Bowl size: 12" X 17" X 7-3/4". 33" minimum base cabinet width. Lifetime limited warranty

STOCK#	PACK	CASE	DESCRIPTION	MFR#	UPC#
043482	1		33" X 22" 4-HOLE WHITE	K5932-4-0	040688096889



Kohler® Hartland® - Double Bowl

Two equal-sized basins with a graduated rim. Crafted from enameled cast iron, this sink resists chipping, cracking, or burning for years of beauty and reliable performance. Bowls size: 14-1/8" X 16-1/4" X 9". 36" minimum base cabinet width. Lifetime limited warranty

STOCK#	PACK	CASE	DESCRIPTION	MFR#	UPC#
043470	1		33" X 22" X 9" 4-HOLE WHITE	K5818-4-0	650531902405



Kohler® Executive Chef™ Double Bowl

The large/medium bowls allow you to keep clean and dirty dishes separate while offering plenty of room for oversized pots and pans. Three oversized faucet holes with one oversized accessory hole to the right. Large Bowl: 16" X 19" X 9-3/4". Medium Bowl: 12" X 17" X 7-3/4". 36" minimum base cabinet width. Lifetime limited warranty.

STOCK#	PACK	CASE	DESCRIPTION	MFR#	UPC#
043481	1		33 X 22" 4-HOLE WHITE	K5931-4U-0	040688783178

Utility Sinks Floor Mounted



PROFLO® Double Compartment

Made from a Sheet Molding Compound (SMC), a plastic composite made up of filler. Fire retardant, thickener and internal mold release, that have been mixed with liquid resin and a catalyst and molded under extreme heat and pressure to create a laundry tub with unparalleled strength. Floor-mounted units are equipped with white baked enamel steel angle legs with leveling devices. Knock-out holes provided for 4" and 8" center set faucet holes. Internal basin depth: 11-1/4".

STOCK#	PACK	CASE	DESCRIPTION	MFR#	UPC#
031010	1	10	40" X 24" DOUBLE WITH LEGS	PFLT4024	033056997406



PROFLO® Single Compartment

Single compartment. Multi-purpose sink. Polypropylene construction with integral strainer. Equipped with white baked enamel steel angle legs with leveling devices. 8" center set holes are field drilled. Internal Basin Depth: 13-7/8".

STOCK#	PACK	CASE	DESCRIPTION	MFR#	UPC#
031011	1	20	20" X 24" 4-CC WITH LEGS	PFLT2024	033056997338



Florestone® Single Compartment

Floor mounted sink. Includes four heavy duty molded legs and the hardware to attach legs to the sink, and drain plugs with hardware. Resistant to fading and abrasion. 1 1/2" drain opening.

STOCK#	PACK	CASE	DESCRIPTION	MFR#	UPC#
031050	1		23" X 23" WITH LEGS WHITE	FM1	671024106605



Florestone® Double Compartment

Floor mounted sink. Includes four heavy duty molded legs and the hardware to attach legs to the sink, and drain plugs with hardware. Resistant to fading and abrasion. 1 1/2" drain opening.

STOCK#	PACK	CASE	DESCRIPTION	MFR#	UPC#
031051	1		45-5/8" X 21-5/8" X 3-1/2" WITH LEGS WHITE	FMD	671024107305

Drop-In



Florestone® Single Compartment

Self-rimming unit. Resistant to fading and abrasion. 1-1/2" drain opening.

STOCK#	PACK	CASE	DESCRIPTION	MFR#	UPC#
031053	1		25" X 22" X 14" WHITE 1/BOX	FSR1WHPD	671024107701
031052	1	3	25" X 22" X 14" WHITE 3/BOX	FSR3WHPD	671024108302

Bath Tubs



American Standard® Princeton™

Americast® offers a durable alternative to cast iron and is 50% lighter in weight. Full slip-resistant surface. Integral lumbar support and beveled headrest. ADA compliant with seat installed at head end, Integral base. Integral apron. End drain outlet.

STOCK#	PACK	CASE	DESCRIPTION	MFR#	UPC#
041004	1		60"X 30" X 14" LEFT HAND DRAIN WHITE	2390.202.020	033056057391
041005	1		60"X 30" X 14" RIGHT HAND DRAIN WHITE	2391.202.020	033056057506



Kohler® Archer™

Enameled Cast Iron. Slotted overflow for maximum bathing depth. Integral tile flange. Integral lumbar support. Limited lifetime warranty.

STOCK#	PACK	CASE	DESCRIPTION	MFR#	UPC#
046020	1		60" X 32" RIGHT HAND DRAIN WHITE	K1123-RA-0	650531508089
046022			60" X 32" LEFT HAND DRAIN WHITE	K1123-LA-0	650531507945



PROFLO® Soaking Tub

Integral tile flange. Textured slip-resistant bottom. 35 gallon total capacity to overflow. 5-Year warranty.

STOCK#	PACK	CASE	DESCRIPTION	MFR#	UPC#
040200	1		60" X 30" RIGHT HAND DRAIN WHITE	PFS6030RSKWH	781889224618
040202	1		60" X 30" LEFT HAND DRAIN WHITE	PFS6030LSKWH	781889224601



Sterling® All Pro®

Deep bathing area: 15". Made with solid Vikrell® material - no layers to chip, crack or peel - color molded throughout. Lightly textured swirl-gloss finish hides scratches from everyday use and very practical for larger families. Gently sloping backrest molded into bath.

STOCK#	PACK	CASE	DESCRIPTION	MFR#	UPC#
040300	5	10	60" X 30" LEFT HAND DRAIN WHITE 5 PACK	61041510-0	087206311468
040301	5	10	60" X 30" RIGHT HAND DRAIN WHITE 5 PACK	61041520-0	087206311444



Sterling® Performa™

Designed with an 15" apron. Made from Solid Vikrell® material for strength, durability and lasting beauty. Durable high-gloss finish provides a smooth and shiny surface that is easy to clean. ADA adaptable when installed as per the requirements of the accessibility guidelines and section 607 bathtubs of the act.

Conforms to ANSI Z124.1.2 and CSA B45.1 national consensus standards. ADA adaptable when installed as per the requirements of the accessibility guidelines and section 608 shower stalls of the act.

STOCK#	PACK	CASE	DESCRIPTION	MFR#	UPC#
040310	1		60" X 29" X 15" LEFT HAND DRAIN WHITE	71041110-0	087206307768
040311	1		60" X 29" X 15" RIGHT HAND DRAIN WHITE	71041120-0	087206307751



Sterling® Ensemble™

Extra deep bathing well for added comfort. Designed with an 18" apron. Made from Solid Vikrell® material for strength, durability and lasting beauty. Durable high-gloss finish provides a smooth and shiny surface that is easy to clean. Gently sloping bath with integral apron. Wainscot of 2" allows tile installation above bath deck. Conforms to ANSI Z124.1.2 and CSA B45.1 national consensus standards. ADA adaptable when installed as per the requirements of the accessibility guidelines and section 608 shower stalls of the act.

STOCK#	PACK	CASE	DESCRIPTION	MFR#	UPC#
040320	1	4	60" X 32" X 18" LEFT HAND DRAIN WHITE	71121110-0	087206987595
040321	1	4	60" X 32" X 18" RIGHT HAND DRAIN WHITE	71121120-0	087206987496

Sterling Tub & Shower Surrounds



ALL-PRO® Series

Solid Vikrell®, Lightly textured swirl-gloss finish hides scratches from everyday use and very practical for larger families, Caulk is required in both vertical and horizontal wall seams to finish installation. Modular design allows it to be moved around corners and through doorways with ease. Convenient shelves and 18" towel bar.

STOCK#	PACK	CASE	DESCRIPTION	MFR#	UPC#
040302	1	10	60" X 30" x 73-1/2" COMPLETE WALL SET WHITE	61044100-0	087206305009

Tub & Shower Surrounds and Shower Stall Walls

SINKS



Performa™ Series

Solid Vikrell® for material strength, durability and lasting beauty, it features a durable, smooth high-gloss finish. Pair with a Performa bath for a complete solution.

STOCK#	PACK	CASE	DESCRIPTION	MFR#	UPC#
040312	1		60" X 30" X 75-1/2" COMPLETE WALL SET WHITE	71044100-0	087206308543



Ensemble™ Series

Made from Solid Vikrell® material for strength, durability and lasting beauty. Durable high-gloss finish provides a smooth and shiny surface that is easy to clean. Tongue-and-groove interlocking joints from a seamless appearance and simply installation. Modular design allows it to be moved around corners and through doorways with ease. Realistic tile look. Convenient shelving.

STOCK#	PACK	CASE	DESCRIPTION	MFR#	UPC#
040322	1		60" X 33" X 74" COMPLETE WALL SET WHITE	71124100-0	087206989100



Accord™ Series

Made from Solid Vikrell® material for strength, durability and lasting beauty. High-gloss finish provides a smooth and shiny surface that is easy to clean. Geometric back-wall design adds visual interest while easy to clean (walls are required to complete the installation). Rounded interior space provides more room for the bather. Abundant and recessed storage reduces the visual clutter. Snap together installation and an audible click lets you know when the walls are properly installed. No caulking required in the seams.

STOCK#	PACK	CASE	DESCRIPTION	MFR#	UPC#
040330	1		60" X 36" X 76" COMPLETE WALL SET WHITE	71164100-0	650531827692



Made of solid Vikrell® material, the four piece modular shower design is easy to install, with caulking seams and snap together walls.

STOCK#	PACK	CASE	DESCRIPTION	MFR#	UPC#
040430	1		48" COMPETE WALL SET FOR 040420/72281100-0 WHITE	72284100-0	650531944924

48" shower wall set. Includes three nickel grab bars.

STOCK#	PACK	CASE	DESCRIPTION	MFR#	UPC#
040431	1		48" COMPETE WALL SET FOR 040420/72281100-0 WHITE	72284103-N-O	885612081216

Shower Stall Walls



Sterling® Shower Stall Walls

Made from Solid Vikrell® material for strength, durability and lasting beauty, walls are required to complete the installation, Rounded interior space provides more room for the bather. Abundant and recessed storage reduces the visual clutter, Snap together installation and an audible click lets you know when the walls are properly installed. No caulking required in the seams.

Ensemble™ Tile Shower Series

STOCK#	PACK	CASE	DESCRIPTION	MFR#	UPC#
040332	1		36" X 72-1/2" BACK WALL ONLY WHITE	72102100-0	087206818172
040351	1		48" X 72-1/2" BACK WALL ONLY WHITE	72122100-0	087206818196
040361	1		60" X 72-1/2" BACK WALL ONLY WHITE	72132100-0	087206818202
040340	1		34" X 72-1/2" SHOWER END WALL SET WHITE	72105100-0	087206818226

Shower Stall Walls and Shower Floors



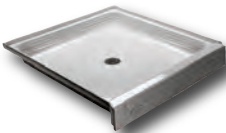
Ensemble™ Curved Series

STOCK#	PACK	CASE	DESCRIPTION	MFR#	UPC#
040380	1		36" X 72-1/2" BACK WALL ONLY WHITE	72202100-0	087206818677
040381			48" X 72-1/2" BACK WALL ONLY WHITE	72222100-0	087206818134
040411	1		60" X 72-1/2" BACK WALL ONLY WHITE	72232100-0	087206818141
040370	1		30" X 72-1/2" END WALL SET WHITE	72175100-0	885612102621
040400	1		34" X 72-1/2" END WALL SET WHITE	72205100-0	087206818219

Shower Floors

PROFLO® Shower Floors

Molded one-piece unit made of durable molded composite material. Non-porous surface is stain, thermal and shock resistant. Integrally molded drain is complete with compression gasket and strainer simplifying installation process. Reinforced for added strength. Easy to clean - special cleaning chemicals not required. Slip-resistant surface.



STOCK#	PACK	CASE	DESCRIPTION	MFR#	UPC#
040020	1	10	36" X 36" WHITE	PFSB3636WH	033056997512
040022	1	10	48" X 34" WHITE	PFSB4834WH	033056997550
040024	1	10	54" X 34" WHITE	PFSB5434WH	033056997567
040026	1	10	60" X 34" WHITE	PFSB6034WH	033056997574

Floestone® Saflor® Shower Bases

One piece, single threshold model for recessed installation. Features 1" flange on 3 sides. The Edge is a 4th Flange. Integral drain with Wedge-Lok® Seal.



STOCK#	PACK	CASE	DESCRIPTION	MFR#	UPC#
040050	1		60" X 34" WITH THE EDGE WHITE	F60341WH	671024057075
040051	1		36" X 36" WITH THE EDGE WHITE	F36361WH	671024101709
040052	1		32" X 32" WHITE	F32321WH	671024100207

Sterling® Ensemble™ Shower Bases

Made from Solid Vikrell® material for strength, durability and lasting beauty. Durable high-gloss finish provides a smooth and shiny surface that is easy to clean. 4-1/2" threshold. Receptor install options include: Tile install, Ensemble™ tile wall surround and Ensemble™ curve wall surround. Limited 10-year consumer and 3-year commercial warrant. Conforms to ANSI Z124.1.2 and CSA B45.1 national consensus standards



STOCK#	PACK	CASE	DESCRIPTION	MFR#	UPC#
040331	1		36" X 34" WHITE	72101100-0	087206818097
040350	1		48" X 34" WHITE	72121100-0	087206818257
040360	1		60" X 34" WHITE	72131100-0	087206818110

Sterling® Accord® Seated Shower Receptors

It features a 12"-wide seat that can be positioned on the left or right side, or it can be removed. 3-1/2" threshold, Solid Vikrell® material. Durable high-gloss finish with molded-in textured floor. Center drain. Not suitable for tile-down applications. Compatible with Accord complete wall set (72284100).



STOCK#	PACK	CASE	DESCRIPTION	MFR#	UPC#
040420	1		48" X 36" WHITE	72281100-0	650531944849
040440			60" X 36" WHITE	72291100-0	650531944832

PROFLO®

1-1/2" Stainless steel grab bar with concealed flange, Bar - 18 gauge (.048) 304 stainless steel, Flange - 14 gauge 304 stainless steel, Screws - #10 x 2" self tapping stainless steel, Rated to 250 lb. test load.



STOCK#	PACK	CASE	DESCRIPTION	MFR#	UPC#
160012	4	20	12" - SATIN	PFGB12SF2	781889247082
160018	1	20	18" - SATIN	PFGB18SF2	781889247129
160024	1	20	24" - SATIN	PFGB24SF2	781889247143
160030	1	12	30" - SATIN	PFGB30SF2	781889247167
160036	1	12	36" - SATIN	PFGB36SF2	781889247204
160048	1	12	48" - SATIN	PFGB48SF2	781889247235

Delta®

7/8" Diameter exposed screw grab bar. Durable stainless-steel construction that can support up to 300 lb.



STOCK#	PACK	CASE	DESCRIPTION	MFR#	UPC#
167604	1	10	9" - CHROME	DF509PC	885785153765

Franklin Brass

Safety First exposed mounting residential Assist. Safety engineered to withstand 300 Lb pull when securely installed.



STOCK#	PACK	CASE	DESCRIPTION	MFR#	UPC#
167606	1	5	16" X 7/8" - CHROME	S1F516PC	079171516023

Medicine Cabinets

Kohler® Medicine Cabinets

Anodized aluminum construction with a durable rust-free and chip-free finish. Two adjustable tempered-glass shelves. Full-overlay mirrored door with beveled edges. Mirrored interior. Two-way adjustable hinges with 108-degree opening capability for easy cabinet access. Can be installed with left- or right-hand swing. Includes mounting hardware for surface or recessed installation. Includes side mirror kit for surface mount installation.



STOCK#	PACK	CASE	DESCRIPTION	MFR#	UPC#
061511	1		20" X 26" X 4-13/16"	KCB-CLC2026FS	723085300062
061512	1		15" X 26" X 4-13/16"	KCB-CLC1526FS	723085300024