

**LOWRY** |

L180XDS | L200XDS | L220XD S | L250XDS | L300XDS | L350XDS | L450XDS

**LIFTKING**  
Manufacturing Corp.



**WAREHOUSE FORKLIFTS**

## Let Us Do The Heavy Lifting

LOWRY delivers heavy lift capability, dependability and safe productive value, all in an industry leading compact size -at only 56" wide, nothing comes close to the maneuverability and mechanical power of the LOWRY XD-Series of heavy-capacity Industrial lift trucks. At LOWRY, we have built our reputation over the past twenty years by providing the absolute best in heavy-capacity industrial lift truck solutions - one truck at a time! Each LOWRY is hand built, custom designed and manufactured right from the start with exceptional high quality Mechanical components and operational solutions for your unique heavy lifting application. Join the LOWRY Heavy Lift Team- Let us show you how our X-TREME DUTY lineup of heavy-capacity industrial lift trucks will work for you!



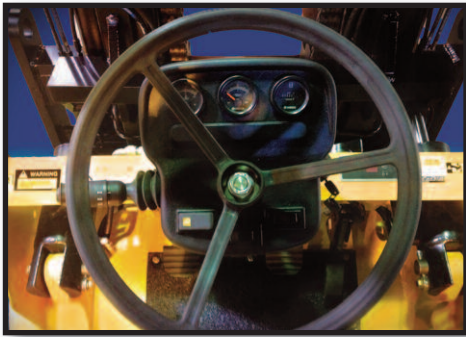
**OPERATOR'S COMPARTMENT:** Built for comfort and productivity. Generous head, arm and leg room for even the largest of operators. Easy on/off step-up frame. Gramer full suspension, fully adjustable, deluxe driver's seat.

## The features you need

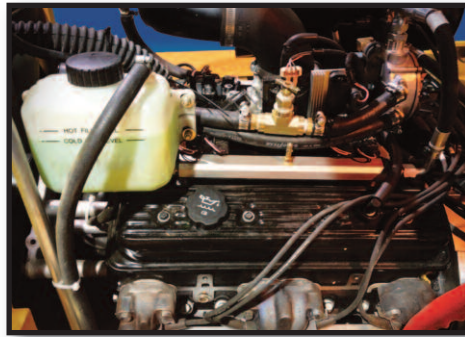
- 3 Speed Power shift Transmission
- Ergonomically designed controls
- Comfortable and functional cab
- Excellent visibility in all directions
- GM Vortec Engine



	Ref	L180XDS	L200XDS
Lift capacities @ 24" Load Center		18,000 lbs / 8,165 kg	20,000 lbs / 9,072 kg
Overall length (without forks)	A	128 in / 3,308 mm	128 in / 3,239 mm
Overall width	B	56 in / 1,422 mm	56 in / 1,422 mm
Wheelbase	C	78 in / 1,981 mm	84 in / 2,133 mm
Height to top of overhead guard	D	93 in / 2,362 mm	93 in / 2,362 mm
Ground Clearance	E	4 in / 102 mm	4 in / 102 mm
Mast Tilt - Forward / Reverse	F / G	6 / 6	6 / 6
Weight Total (approx.)		24,500 lbs / 11,113 kg	28,420 lbs / 12,920 kg
Travel Speed (Maximum Forward - No Load)		10 mph / 16 kmh	10 mph / 16 kmh
Tire Size: Front / Rear		28x12 / 22x8	28x12 / 22x8
Curb Clearance		286 in / 7,265 mm	289 in / 7,340 mm
Turning Radius		300 in / 7,620 mm	305 in / 7,745 mm



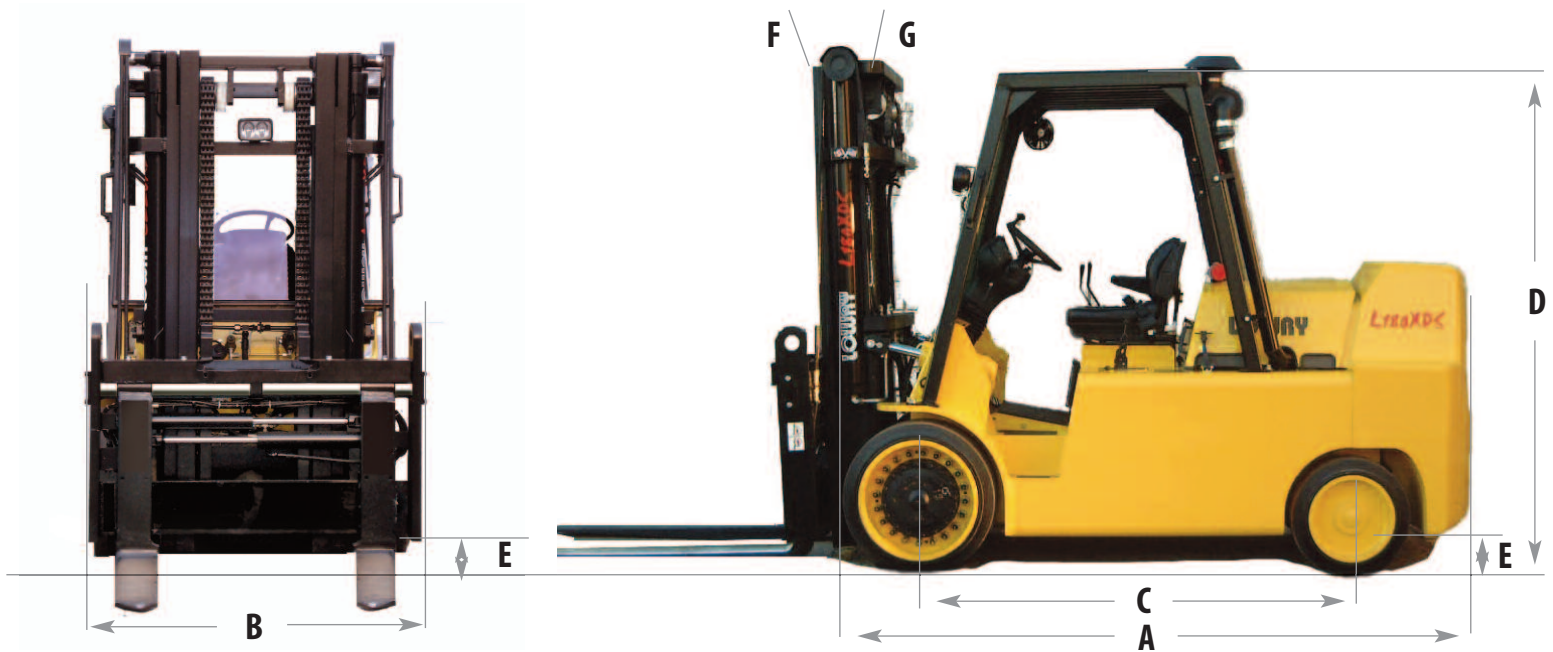
**STEER COLUMN:** Self contained, fully adjustable, tilt and telescopic steer column.



**ENGINE:** GM low emission propane Vortec engines. Optional Clean Burn Cummins Turbo Diesel engines.



**LOWRY'S:** Unique super "Clear View" mast combines excellent visibility with exceptional strength for safety and high productivity.



L220XDS	L250XDS	L300XDS	L350XDS	L400XDS	L450XDS
22,000 lbs / 9,979 kg	25,000 lbs / 11,340 kg	30,000 lbs / 13,608 kg	35,000 lbs / 15,876 kg	40,000 lbs / 18,182 kg	45,000 lbs / 20,412 kg
135 in / 3,429 mm	141 in / 3,581 mm	144 in / 3,657 mm	153 in / 3,886 mm	165 in / 4,191 mm	165 in / 4,191 mm
56 in / 1,422 mm	56 in / 1,422 mm	56 in / 1,422 mm	60 in / 1,524 mm	77 in / 1,956 mm	77 in / 1,956 mm
84 in / 2,134 mm	84 in / 2,134 mm	90 in / 2,286 mm	98 in / 2,489 mm	103 in / 2,616 mm	103 in / 2,616 mm
93 in / 2,362 mm	93 in / 2,362 mm	93 in / 2,362 mm	93 in / 2,362 mm	95 in / 2,413 mm	95 in / 2,413 mm
4 in / 102 mm	4 in / 102 mm	4 in / 102 mm	4 in / 102 mm	4 in / 102 mm	4 in / 102 mm
6 / 6	6 / 6	6 / 6	6 / 6	6 / 6	6 / 6
30,140 lbs / 13,700 kg	36,220 lbs / 16,429 kg	38,500 lbs / 17,468 kg	41,240 lbs / 18,745 kg	42,480 lbs / 19,310 kg	43,320 lbs / 19,690 kg
10 mph / 16 kmh	10 mph / 16 kmh	8 mph / 13 kmh	8 mph / 13 kmh	8 mph / 13 kmh	8 mph / 13 kmh
28x12 / 22x8	28x14 / 22x8	28x14 / 22x8	28x16 / 22x8	28x22 / 22x10	28x22 / 22x10
289 in / 7,340 mm	289 in / 7,340 mm	292 in / 7,415 mm	297 in / 7,545 mm	302 in / 7,670 mm	302 in / 7,670 mm
305 in / 7,745 mm	305 in / 7,745 mm	310 in / 7,575 mm	315 in / 8,000 mm	320 in / 8,130 mm	320 in / 8,130 mm

#### ELECTRIC

System Type	12 volt negative ground with circuit breaker protection
Battery	1000 AH, Maintenance Free
Alternator	85 A
Neutral Safety Start	Yes, with anti re-start protection.
Lighting	Headlights, tail brake lights, reverse lights

#### ENGINE

System Type	GM 5.7 liter Vortec V8 or Cummins 4.5 turbo
Fuel	Propane / Diesel
Cooling	Thermal Systems "Bar and Plate cooling technology"

#### TRANSMISSION

Type	Dana extreme duty rated 32,000 series
Shifting	"APC" electronic shift controllers
Safety	Pre-Programmed Speed Control

#### AXLES

Rockwell Planetary Drive Axle	Rated for 75,000 lbs
Cooling	Oil Cooled, Remote
Brakes	Triple wet disk brakes

#### STEERING

Type	Hydrostatic single cylinder
Steering Turns Lock To Lock	4
Steer pump pressure	1800 PSI / 124 Bar

#### HYDRAULIC SYSTEM

Pump Type	Gear
Flow Rating	25GPM @ 2200 RPM
Pressure Rating	2,500 PSI / 172 Bar



#### STANDARD EQUIPMENT:

Heavy Duty Clearview Roller Mast with Dual Chains • Hydraulic Mast side shift • Oil Cooled Submerged Disc Brakes • Manual dry-disc parking brake • Power Steering • Headlights, tail lights, reverse lights, and turn signals with safety guards • External side view mirrors. • Reinforced Overhead Guard • Wide-grip Handrails • Extra wide steps. • Electric Horn and automatic Backup alarm • Tilt steering column with anti-restart ignition and neutral safety interlock • Adjustable vinyl suspension seat with arm rests and retractable safety belt • Engine oil pressure gauge, fuel gauge, tachometer, hour meter, and warning lights • Lockable sliding engine hood, fuel and hydraulic caps • High-mount air intake with pre-cleaner. • Designated tie-down lugs • Operator, maintenance and illustrated parts manuals included • 1 Year 2000 hours warranty

#### APPLICATION ASSISTANCE PROGRAM:

What does your load weigh? • How high is the maximum lift required? • How long is your load? • How wide? • What is the duty cycle? • Is there a ramp? • Door height? • There is absolutely no room for error when specifying a heavy-capacity industrial lift truck. • Take advantage of LOWRY's exclusive computer generated application modeling program. • The critical information provided by this program ensures a comprehensive understanding of what specifications, features and mechanical components are best suited to the unique requirements of your application. • Based upon a completed survey, the correct choices of truck capacity, operational parameters, equipment specifications and mechanical components are determined to ensure that your heavy loads are handled with the highest degree of efficiency and mechanical reliability; and also at the most profitable cost per operating hour.

**\*Lo-Profile Mast configuration available for working inside ISO shipping containers.**

Liftking reserves the right to make changes in specifications shown, herein, and improvements, or discontinue manufacture at any time without notice or obligation. The information contained herein is general in nature and is not intended for specific application purposes.

7135 Islington Avenue, Woodbridge, Ontario. L4L 1V9  
Tel: 905-265-3965 | Fax: 905-851-6396