

RENEWABLE PARTS CATALOG

ReliaGear™ LV MCC

Motor control center



—
The ReliaGear™ LV MCC motor control center is designed and manufactured to provide long and satisfactory service. This Renewal Parts Catalog contains items which, through normal use, may require periodic maintenance and replacement. Other items may never need service or replacement during the useful life of the equipment.

Table of contents

04	Introduction
05	Ordering instructions
06–08	Structural parts
09–13	Vertical and main bus parts
14–17	Unit parts

Introduction

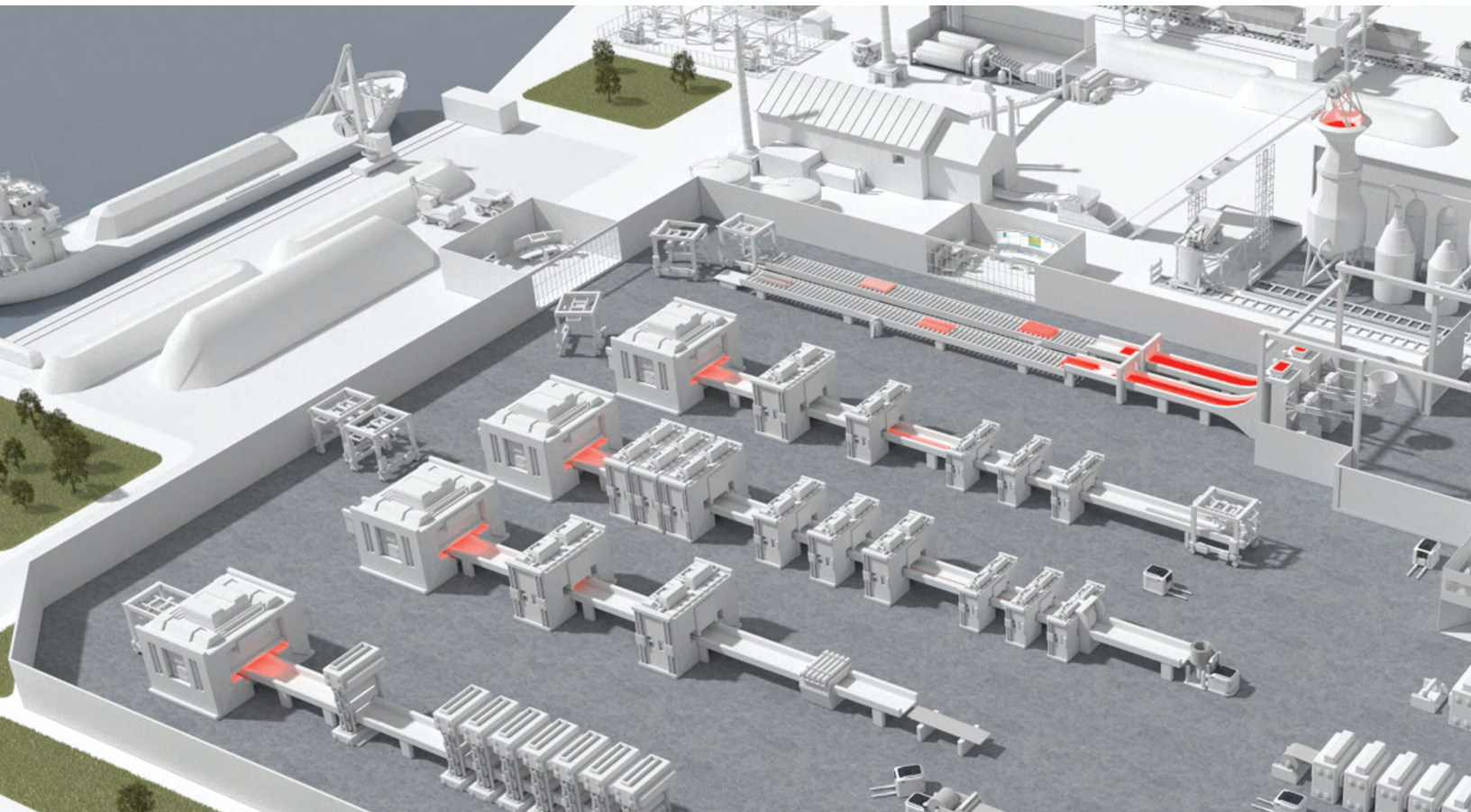
The ReliaGear™ LV MCC motor control center is designed and manufactured to provide long and satisfactory service.

This Renewal Parts Catalog contains items which, through normal use, may require periodic maintenance and replacement. Other items may never need service or replacement during the useful life of the equipment.

ABB believes that customers are in the best position to determine investment in renewal parts, taking into consideration the total amount of ReliaGear™ LV MCC motor control centers at facilities, proximity to ABB distributors, and the importance of minimizing equipment downtime.

For identifying and ordering replacement parts not included in this publication, refer to the Spares Recommendation and Parts List sections of the renewal parts quotation for the motor control center. If this is not available, identify the equipment as follows before contacting the local distributor or ABB sales office:

1. Equipment ReliaGear LV MCC motor control center.
2. Complete vertical section nameplate information (for structural and bus parts).
3. Complete plug-in unit nameplate information (for individual unit parts).



Ordering instructions

The ordering of renewal parts will be simplified by referencing the data provided on the ReliaGear LV MCC section nameplate and, if required, unit nameplate.

Section nameplate — (located on the front of each UL listed section, near the upper right-hand corner):

- ***CAT. NO.:** The ABB, Mebane, North Carolina, factory catalog number
- ***DIAGRAM NO.:** The outline summary sheet (often referred to as “record drawings”) for this section

- **AMPS-SUPPLY:** The main (i.e. horizontal) bus rating
- **AMPS-SECTION:** The vertical bus rating

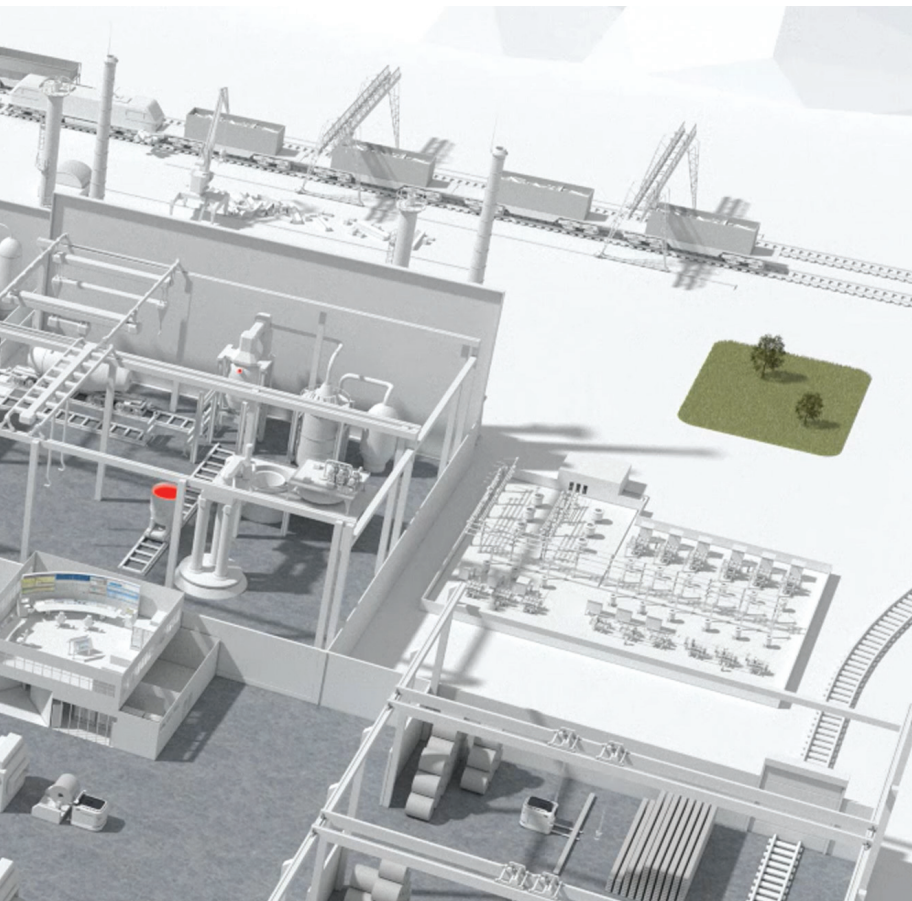
When ordering replacement parts not identified in this bulletin, both the “CAT. NO.” and “DIAGRAM NO.” must be referenced, accompanied by a complete description of the replacement part(s) desired.

Unit nameplate — plug-in units; located on the right-hand vertical side barrier; bolt-in units; located near the branch circuit overcurrent protective device):

- **MODEL:** Type of motor control center design
- **VOLTS TYPE:** Unit power supply voltage unit function (as listed on outline summary sheet)
- ***CONT. VOLTS:** Unit control voltage
- **UNIT NO.:** The factory catalog number. This identifies the section and unit location within that section
- **DIAGRAM:** The outline summary sheet and page number which contains the wiring elementary diagram for this unit
- **SIZE AMPS/HP:** The NEMA size rating of the starter. The ampere rating of the circuit breaker or fusible switch (for feeder unit), or horsepower rating (for combination starter units)

When ordering a complete replacement unit or replacement parts not identified in this bulletin, the MODEL, UNIT NO., and DIAGRAM must be referenced, accompanied by a complete description of the replacement part(s) desired.

* This information must be included in the order form.

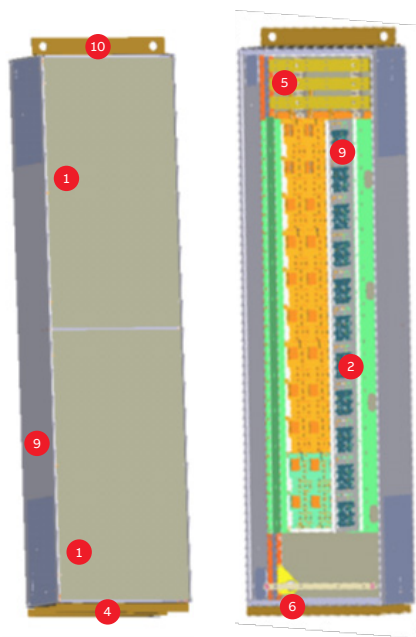


Structural parts


01 Rear cover

02 Side case assembly

Item	Description	Page
1	Rear Cover	6
2	Side Case Assembly	6
3	Case Sill (Figure 3)	6
4	Rodent Barrier	6
5	Front Top Cover Plate	7
6	Floor Plate	7
7	Mullions, Wireway (Figure 7)	7
8	Full Width Mullions (Figure 8)	7
9	Side Enclosure Cover	7
10	Lifting Angle	7
11	Floor Sill	7
12	Elevated Rear Roof Cover	7



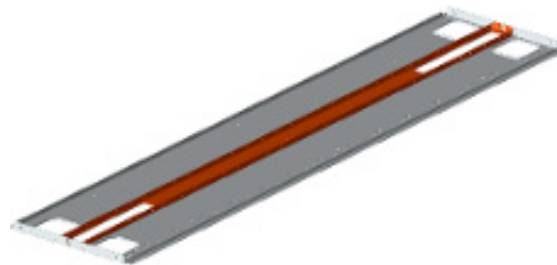
Item 1 - Rear Cover

	Product	Code
	33 x 20	190B1007P1
	33 x 24	190B1007P2
	33 x 30	190B1007P3
	33 x 36	190B1007P4
	39 x 20	190B1007P5
	39 x 24	190B1007P6
	39 x 30	190B1007P7
	39 x 36	190B1007P8
	45 x 20	190B1007P9
	45 x 24	190B1007P10
	45 x 30	190B1007P11
	45 x 36	190B1007P12
	24 x 20	190B1007P13
Real hinge door top only	110C1466G9	
Rear hinge door bottom only	110C1466G21	
Rear hinge mounting bracket (2 per section)	110C1464P1	
Screw, Steel T-Roll 10-24 x 3/4 (6)		

01

Item 2 – Side Case Assembly

Side case assemblies are not available as spare parts. Since this component supports the main horizontal bus, contact ELDS Service Sales for service or replacement.



02

03 Case sills

04 Rodent barrier

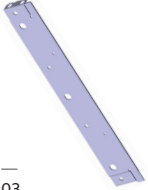
05 Front top cover plate

06 Floor plate

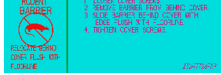
07 Mullions, wireway

08 Mullions, wireway


Item 3 - Case Sills

	Product	Code
	Case Sill 20 In	190B1009P1
	Case Sill 34 In	190B1009P2
	Case Sill 30 In	190B1009P3
	Case Sill 36 In	190B1009P4
	Case Rear Sill 20 In	190B2752P1
	Case Rear Sill 24 In	190B2752P2
	Case Rear Sill 30 In	190B2752P3
	Case Rear Sill 36 In	190B2752P4

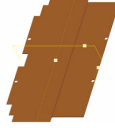
Item 4 – Rodent Barrier

	Product	Code
	Barrier, Rodent 13D 3IN	190B2177G1
	Barrier, Rodent 20D 3IN	190B2177G2
	Barrier, Rodent 22D 5IN	190B2177G3
	Barrier, Rodent 30D 3IN	190B2177G4
	Barrier, Rodent 13D 3IN	190B2177G1
04	Screw, Steel T-Roll 1/4-20 X 3/8 (1)	


Item 5 – Front Top Cover Plate

	Product	Code
	20 x 8	190B1060P1
	24 x 8	190B1060P2
	30 x 8	190B1060P3
	36 x 8	190B1060P4
	20 x 18	190B1060P5
	24 x 18	190B1060P6
	30 x 18	190B1060P7
05	36 x 18	190B1060P8
	Screw, Steel T-Roll 1/4-20 X 3/8 (8)	


Item 6 – Floor Plate

	Product	Code	
	Front 20 x 20/30	110C1030P1	
	Front 20 x 22	110C1030P2	
	Front 24 x 20/30	110C1030P3	
	Front 24 x 22	110C1030P4	
	Front 20 x 25	110C1030P10	
	Front 24 x 25	110C1030P11	
	6A	Rear 20 x 20	110C1060P1
		Rear 20 x 22	110C1060P2
		Rear 24 x 20	110C1060P4
		Rear 24 x 22	110C1060P5
		Rear 20 x 25	110C1060P1
	Rear 24 x 25	110C1060P4	
6B	Screw, Steel T-Roll 1/4-20 X 5/8 (4)		


Item 7 – Mullions, Wireway

	Product	Code
	4 IN Case Width 20 IN	190B1255P1
	9 IN Case Width 24 IN	190B1255P2
	15 IN Case Width 30 IN	190B1255P3
07		

Item 8 – Full Width Mullions


	Product	Code
	Top 20W	190B1238P1
	Top 24W	190B1238P2
	Top 30W	190B1238P3
	Top 36W	190B1238P4
08		

Item 9 – Side Enclosure Cover

	Product	Code
	Cover, Side Enclosure 20/30 In 3-inch Vertical	110C1029G1
	Cover, Side Enclosure 22/30 In 5-inch Vertical	110C1029G2
	Cover, Side Enclosure 13-Inch 3-Inch Vertical	110C1029G3
	Cover, Side Enclosure 25-Inch BTB	110C1029G11
	Cover, Side Enclosure 30-Inch Bus Class 1.5 Sheetmetal	270A1988P1
	Cover, Side Enclosure 30-Inch Bus Class 1.5 Barrier	270A1987P1
	09	Screw, Steel T-Roll 1/4-20 X 1/2 (4)


—
10 Lifting angle

—
Item 10 – Lifting Angle

	Product	Code
	Angle, Lifting ASM 20	110C1044G1
	Angle, Lifting ASM 20 x 20	110C1044G2
	Angle, Lifting ASM 20 x 20 x 20	110C1044G5
10	Includes Bolting Hardware	

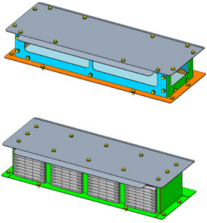
—
11 Floor sill

—
Item 11 – Floor Sill

	Product	Code
	Floor Sill - 20"	110C1043G1
	Floor Sill - 20" - 20"	110C1043G2
	Floor Sill - 20" - 20" - 20"	110C1043G6
	Floor Sill Bus Class 1.5 20"	270A2862G1
	Floor Sill Bus Class 1.5 20"-20"	270A2862G2
	Floor Sill Bus Class 1.5 20"-20"-20"	270A2862G6
11		

—
12 Elevated rear roof cover

—
Item 12 – Elevated Rear Roof Cover

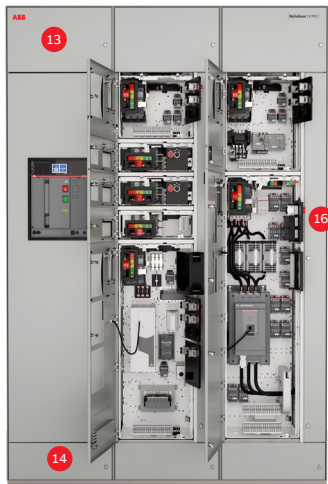
	Product	Code	
	Elevated rear roof cover 20 IN	270A2108G1	
	Elevated rear roof cover 24 IN	270A2108G2	
	Elevated rear roof cover 30 IN	270A2108G3	
	Elevated rear roof cover 36 IN	270A2108G4	
	Elevated rear roof cover 20 IN T12	270A2259G1	
	Elevated rear roof cover 24 IN T12	270A2259G2	
	Elevated rear roof cover 30 IN T12	270A2259G3	
	Elevated rear roof cover 36 IN T12	270A2259G4	
	12		

Vertical and main bus parts

Item	Description	Page
13	Top Wireway Door	8
14	Bottom Wireway Door	9
15	Vertical Bus Accessories	9
16	Vertical Wireway Door Assembly	9

Item	Description	Page
17	Ladder Assembly	10
18	Ladder Assembly Cut Out	10
19	Shelf Assembly	10
20	Blank Unit Door Assembly (Figure 18)	10
21	Filler Kits (Not Shown)	11

Note regarding main horizontal bus: Main bus components are not available directly as spare parts. For main bus repair, please contact ABB Service Sales.



—
13
Top wireway door

—
Item 13 – Top Wireway Door

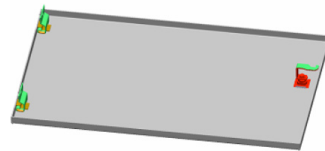


—
13

	Product	Code
Standard Top Wireway Door		
	DOOR, ASSEMBLY, TOP WIRE WAY, 20 X 12	110C1440G1WC
	DOOR, ASSEMBLY, TOP WIRE WAY, 20 X 18	110C1440G2WC
	DOOR, ASSEMBLY, TOP WIRE WAY, 24 X 12	110C1440G6WC
	DOOR, ASSEMBLY, TOP WIRE WAY, 24 X 18	110C1440G7WC
	DOOR, ASSEMBLY, TOP WIRE WAY, 30 X 12	110C1440G14WC
	DOOR, ASSEMBLY, TOP WIRE WAY, 30 X 18	110C1440G15WC
Type 12 Vented Top Wireway Doors		
	DOOR, TOP WW, 20X12, T12, RITTAL FILTERS	270A2180G1WC
	DOOR, TOP WW, 24X12, T12, RITTAL FILTERS	270A2180G2WC
	DOOR, TOP WW, 30X12, T12, RITTAL FILTERS	270A2180G3WC
	DOOR, TOP WW, 36X12, T12, RITTAL FILTERS	270A2180G4WC
Type 1 Vented Top Wireway Doors		
	DOOR, TOP WW, 20X12, Ventilated	270A2178G1
	DOOR, TOP WW, 24X12, Ventilated	270A2178G2
	DOOR, TOP WW, 30X12, Ventilated	270A2178G3
	DOOR, TOP WW, 36X12, Ventilated	270A2178G4

Includes Door Hinges, Latch Assembly, Case Side Hinges, Door Pin, and Split Pin

—
Item 14 – Bottom Wireway Door



—
14a



—
14b

	Product	Code
Standard Bottom Wireway Door		
	DOOR, ASSEMBLY, BOTTOM WIREWAY, 20 X 12	110C1450G1WC
	DOOR, ASSEMBLY, BOTTOM WIREWAY, 20 X 18	110C1450G2WC
	DOOR, ASSEMBLY, BOTTOM WIREWAY, 24 X 12	110C1450G6WC
	DOOR, ASSEMBLY, BOTTOM WIREWAY, 24 X 18	110C1450G7WC
	DOOR, ASSEMBLY, BOTTOM WIREWAY, 20 X 6	110C1450G11WC
	DOOR, ASSEMBLY, BOTTOM WIREWAY, 24 X 6	110C1450G12WC
	DOOR, ASSEMBLY, BOTTOM WIREWAY, 30 X 12	110C1450G16WC
	DOOR, ASSEMBLY, BOTTOM WIREWAY, 30 X 6	110C1450G54WC
	DOOR, ASSEMBLY, BOTTOM WIREWAY, 30 X 18	110C1450G59WC
Type 1 Vented Bottom Wireway Doors		
	DOOR, ASSEMBLY, BOTTOM WIREWAY, 20 X 12, VENT	110C1450G97
	DOOR, ASSEMBLY, BOTTOM WIREWAY, 24 X 12 VENT	110C1450G98
	DOOR, ASSEMBLY, BOTTOM WIREWAY, 30 X 12 VENT	110C1450G99
	DOOR, ASSEMBLY, BOTTOM WIREWAY, 36 X 12 VENT	110C1450G100
	DOOR, ASSEMBLY, BOTTOM WIREWAY, 20 X 6 VENT	110C1450G140
	DOOR, ASSEMBLY, BOTTOM WIREWAY, 24 X 6 VENT	110C1450G141
	DOOR, ASSEMBLY, BOTTOM WIREWAY, 30 X 6 VENT	110C1450G142
Type 12 Vented Bottom Wireway Doors		
	DOOR, ASSEMBLY, BOTTOM WIREWAY, 20 X 12, T12 RITTAL FILTERS	270A2186G1WC
	DOOR, ASSEMBLY, BOTTOM WIREWAY, 24 X 12 T12 RITTAL FILTERS	270A2186G2WC
	DOOR, ASSEMBLY, BOTTOM WIREWAY, 30 X 12 T12 RITTAL FILTERS	270A2186G3WC
	DOOR, ASSEMBLY, BOTTOM WIREWAY, 36 X 12 T12 RITTAL FILTERS	270A2186G4WC
	DOOR, ASSEMBLY, BOTTOM WIREWAY, 20 X 6 T12 RITTAL FILTERS	270A2186G5WC
	DOOR, ASSEMBLY, BOTTOM WIREWAY, 24 X 6 T12 RITTAL FILTERS	270A2186G6WC
	DOOR, ASSEMBLY, BOTTOM WIREWAY, 30 X 6 T12 RITTAL FILTERS	270A2186G7WC

Includes Door Hinges, Latch Assembly, Case Side Hinges, Door Pin, and Split Pin

—
15a
Stab opening cover

—
15b
Bottom vertical
bus barrier

—
15c
Vertical bus shutter

—
16
Vertical Wireway
Door Assembly

—
17
Ladder assembly

—
18
Wireway knockout plate

—
19
Shelf assembly

Item 15 – Vertical Bus Accessories

	Product	Code
	Stab Opening Cover	190B1215P1
	Bottom Vertical Bus Barrier	190B1549G1
15a	Vertical Bus Shutter ASM At Top	110C1783G1
	Vertical Bus Shutter ASM At Middle	110C1783G2
	Vertical Bus Shutter ASM At Bottom	110C1783G3
15b	Standard shelf	110C1059P1
	Shelf grounding bracket	270A1343G1
	Shelf support – 72" high	110C1010G11
15c	Gasket, UL 50E, 0.19T X 0.50W, 50 Foot Roll	270A2626P2

Item 16 – Vertical Wireway Door Assembly

	Product	Code
20" Wide Section		
	5W 6H	110C1163G1WC
	5W 12H	110C1163G2WC
	5W 18H	110C1163G3WC
	5W 24H	110C1163G4WC
	5W 30H	110C1163G5WC
	5W 36H	110C1163G6WC
	5W 42H	110C1163G7WC
	5W 48H	110C1163G8WC
	5W 54H	110C1163G9WC
	5W 60H	110C1163G10WC
	5W 66H	110C1163G11WC
	5W 72H	110C1163G12WC
24" Wide Section		
	9W 6H	110C1163G13WC
	9W 12H	110C1163G14WC
	9W 18H	110C1163G15WC
	9W 24H	110C1163G16WC
	9W 30H	110C1163G17WC
	9W 36H	110C1163G18WC
	9W 42H	110C1163G19WC
	9W 48H	110C1163G20WC
	9W 54H	110C1163G21WC
	9W 60H	110C1163G22WC
	9W 66H	110C1163G23WC
	9W 72H	110C1163G24WC

Item 17 – Ladder Assembly

	Product	Code
	36 IN	110C1010P1
	30 IN	110C1010P2
	24 IN	110C1010P3
	18 IN	110C1010P4
	12 IN	110C1010P5
	42 IN	110C1010P6
	48 IN	110C1010P7
	54 IN	110C1010P8
	60 IN	110C1010P9
17	66 IN	110C1010P10
	72 IN	110C1010P11
	6 IN	110C1010P12

Item 18 – Wireway Knockout Plate

	Product	Code
	Wireway knockout plate	190B1014P1
		1 used every 6"

Item 19 – Shelf Assembly

	Product	Code
	Shelf and Bracket Assembly	110C1850G1

—
20
Blank unit door assembly

—
Item 20 – Blank Unit Door Assembly

Product	Code
15 x 6	110C1240KKG1WC
15 x 12	110C1240KKG2WC
15 x 18	110C1240KKG3WC
15 x 24	110C1240KKG4WC
15 x 30	110C1240KKG5WC
15 x 36	110C1240KKG6WC
15 x 42	110C1240KKG7WC
15 x 48	110C1240KKG8WC
20 x 6	110C1240KKG9WC
20 x 12	110C1240KKG10WC
20 x 18	110C1240KKG11WC
20 x 24	110C1240KKG12WC
20 x 30	110C1240KKG13WC
20 x 36	110C1240KKG14WC
20 x 42	110C1240KKG15WC
20 x 48	110C1240KKG16WC
20 x 54	110C1240KKG17WC
20 x 60	110C1240KKG18WC
20 x 66 FOR 90 CASE HEIGHT	110C1240KKG19WC
20 x 72	110C1240KKG20WC
24 x 6	110C1240KKG21WC
24 x 12	110C1240KKG22WC
24 x 18	110C1240KKG23WC
24 x 24	110C1240KKG24WC
24 x 30	110C1240KKG25WC
24 x 36	110C1240KKG26WC
24 x 42	110C1240KKG27WC
24 x 48	110C1240KKG28WC
24 x 54	110C1240KKG29WC
24 x 60	110C1240KKG30WC
24 x 66 FOR 90 CASE HEIGHT	110C1240KKG31WC
24 x 72	110C1240KKG32WC
30 x 6	110C1240KKG33WC
30 x 12	110C1240KKG34WC
30 x 18	110C1240KKG35WC
30 x 24	110C1240KKG36WC
30 x 30	110C1240KKG37WC
30 x 36	110C1240KKG38WC
30 x 42	110C1240KKG39WC
30 x 48	110C1240KKG40WC
30 x 54	110C1240KKG41WC
30 x 60	110C1240KKG42WC
30 x 66 FOR 90 CASE HEIGHT	110C1240KKG43WC
30 x 72	110C1240KKG44WC
36 x 60	110C1240KKG45WC
36 x 66 FOR 90 CASE HEIGHT	110C1240KKG46WC
20 x 90	110C1240KKG47WC
24 x 90	110C1240KKG48WC



—
20

—
Item 20 – Blank Unit Door Assembly (continued)

Product	Code
20 x 24 (PULL BOX)	110C1240KKG49WC
20 x 30 (PULL BOX)	110C1240KKG50WC
24 x 24 (PULL BOX)	110C1240KKG51WC
24 x 30 (PULL BOX)	110C1240KKG52WC
15 x 54	110C1240KKG53WC
15 x 60	110C1240KKG54WC
15 x 66	110C1240KKG55WC
15 x 72	110C1240KKG56WC

Includes Door Hinges, Latch Assembly, Case Side Hinges, Door Pins, Nameplate, and Canoe Clips

—
Item 21 – Filler Kits and Doors

Product	Code
6" Filler kit	EK06
12" Filler kit	EK12
18" Filler kit	EK18
24" Filler kit	EK24
30" Filler kit	EK30
36" Filler kit	EK36
42" Filler kit	EK42
48" Filler kit	EK48
Door - Size 1 - 6"	110C1540BAG1WC
Door - Size 1 & 2 w/ P/B cutout - 12"	110C1540AAG11WC
Door - Size 3 w/ P/B cutout - 18"	110C1540AAG12WC
Door - Size 4 w/ P/B cutout - 24"	110C1540AZG13WC
Door - Size 4 w/ P/B cutout - 30"	110C1540AZG14WC
Door - Size 4 w/ P/B cutout - 36"	110C1540AZG15WC
Door - Sz 1 & 2 w/o P/B cutout - 12"	110C1540AAG1WC
Door - Size 3 w/o P/B cutout - 18"	110C1540ABG2WC
Door - Size 4 w/o P/B cutout - 24"	110C1540AZG3WC
Door - Size 4 w/o P/B cutout - 30"	110C1540AZG4WC
Door - Size 4 w/o P/B cutout - 36"	110C1540AZG5WC
6" Feeder Door	110C1540DAG2WC
12" Feeder Door	110C1540AAG41WC

Door Hinge	
Cabinet Side Hinge	190B1013P1
Hinge Pin	190B1080P1



—
21

—
22
Main bus structural parts

—
22a
Clear horizontal bus barrier

—
22b
Space heater assembly

—
22c
Thermostat assembly

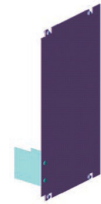
—
22d
Cable support

—
22e
Main bus splice kit

—
Item 22 – Main Bus Structural Parts

Note regarding main horizontal bus: Main bus components are not available directly as spare parts. For main bus repair, please contact ELDS Service Sales.

	Product	Code
Clear Horizontal Bus Barriers		
	2" HORZ MAIN BUS BARRIER ASM, 20	110C1147G1
	2" HORZ MAIN BUS BARRIER ASM, 24	110C1147G2
	2" HORZ MAIN BUS BARRIER ASM, 30	110C1147G3
	2" HORZ MAIN BUS BARRIER ASM, 36	110C1147G4
	Bus barrier upper 20W 2500A/3200A	270A1971P4
	Bus barrier upper 24W 2500A/3200A	270A1971P3
	Bus barrier upper 30W 2500A/3200A	270A1971P2
	Bus barrier upper 36W 2500A/3200A	270A1971P1
Space Heater Assembly		
	Space Htr Asm - 12" Bottom - 20"	190B2643G1
	Space Htr Asm - 12" Bottom - 24"	190B2643G2
	Space Htr Asm - 12" Bottom - 30"	190B2643G3
	Space Htr Asm - 6" Bottom - 20"	190B2643G9
	Space Htr Asm - 6" Bottom - 24"	190B2643G10
	Space Htr Asm - 6" Bottom - 30"	190B2643G11
Thermostat Assembly		
	Thermostat Assembly	190B2375G1
Cable Support		
	Cable Support	204B4135P1
Main Bus Splice Kit		
	600A - 2" - Tin plated	110C1735G1SM
	600A - 2" - Silver plated	110C1735G1KT
	800A - 2" - Tin plated	110C1735G4SM
	800A - 2" - Silver plated	110C1735G4KT
	1000/1200A - 2" - Tin plated	110C1735G7SM
	1000/1200A - 2" - Silver plated	110C1735G7KT
	1600A - 4" - Tin plated	110C1735G10SM
	1600A - 4" - Silver plated	110C1735G10KT
	2000A - 2" - Tin plated	110C1735G12SM
	2000A - 2" - Silver plated	110C1735G12KT
	2500A - 2" - Tin Plated	110C1735G13SM
	2500A - 2" - Silver Plated	110C1735G13KT
	600A - 2" - Tin plated - for NEMA 3	110C1735G14SM
	600A - 2" - Silver plated - for NEMA 3	110C1735G14KT
	800A - 2" - Tin plated - for NEMA 3	110C1735G15SM
	800A - 2" - Silver plated - for NEMA 3	110C1735G15KT
	1000/1200A - 2" - Tin plated - for NEMA 3	110C1735G16SM
	1000/1200A - 2" - Silver plated - for NEMA 3	110C1735G16KT
	2500/3200A 4" SPLICE TO LEFT / RIGHT - Tin plated	110C1735G38SM
	2500/3200A 4" SPLICE TO LEFT / RIGHT - Silver plated	110C1735G38KT
	2500/3200A 4" SPLICE TO LEFT / RIGHT FOR NEMA 3 - Tin plated	110C1735G39SM
	2500/3200A 4" SPLICE TO LEFT / RIGHT FOR NEMA 3 - Silver plated	110C1735G39KT



—
22a



—
22b



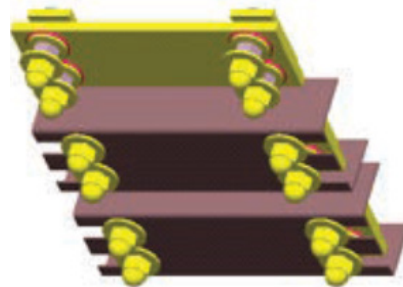
—
22c



—
22



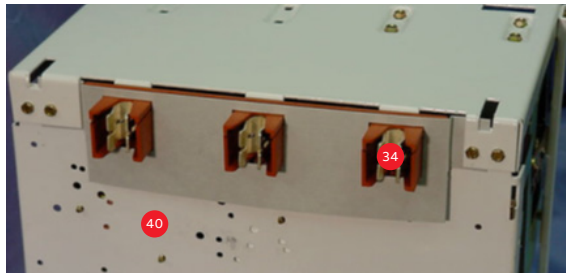
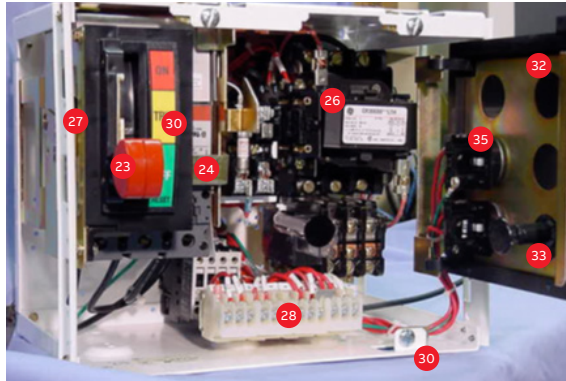
—
22d



—
22e

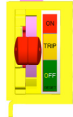
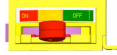
Unit parts

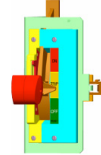
- 23a Vertical
- 23b Horizontal
- 23c Type 12 Tmax XT5 or XT7
- 23d Type 1 Tmax XT5 or XT7
- 24 Handle actuator assembly



Item 23 – Combination Starter Handles

Handle (Only)" includes plastic handle with egg shaped knob; "Handle assembly" includes handle, egg shaped knob, escutcheon, and steel linkage to mount on unit.

	Product	Code
	Handle Assemblies	
	HANDLE ESCUTCHEON ASM, SZ1-4, XT2, XT4	190B3989G1
	HANDLE ESCUTCHEON ASM, SZ1-4, 1/2X XT2 XT4	190B3989G2
	HANDLE ESCUTCHEON ASM, SZ1-4, XT2, XT4, TYPE 12	190B3989G3
23a	HANDLE ESCUTCHEON ASM, SZ1-4, 1/2X XT2, XT4 TYPE 12	190B3989G4
	HANDLE ESCUTCHEON ASM, SZ1-4, XT2, XT4 NO LABEL	190B3989G5
	HANDLE ESCUTCHEON ASM, SZ1-4, XT2, XT4 TYPE 12 NO LABEL	190B3989G6
	HANDLE ESCUTCHEON ASM, XT4 VERTICAL	190B3989G7
23b	HANDLE ESCUTCHEON ASM, XT4 HORIZONTAL	190B3989G8
	HANDLE ESCUTCHEON ASM, XT4 HORIZONTAL T12	190B3989G9
	HANDLE ESCUTCHEON ASM, XT4 HORIZONTAL T12	190B3989G10
	HANDLE ASSEMBLY, TMAX XT5, TYPE 1	110C2462G2
	HANDLE ASSEMBLY, TMAX XT7, TYPE 1	110C2462G1
	HANDLE ASSEMBLY, TMAX XT5, TYPE 12	270A2578G1
23c	HANDLE ASSEMBLY, TMAX XT7, TYPE 12	270A2578G2



23d

Item 24 – Handle Actuator Assembly

Includes metal actuator, top hat, and door defeater as shown below.

	Product	Code
	TMAX XT4-BREAKER OPERATOR SUB-ASM	110C2400G1
	1/2X TMAX XT4-BREAKER STARTER/FEEDER SUB-ASM	110C2400G2
	TMAX XT4-DUAL FEEDER BREAKER OPERATOR SUB-ASM	110C2400G3
	TMAX XT4-BREAKER OPERATOR SUB-ASM T12	110C2400G4
	1/2X TMAX XT4-BREAKER STARTER/FEEDER SUB-ASM T12	110C2400G5
	TMAX XT4-DUAL FEEDER BREAKER OPERATOR SUB-ASM T12	110C2400G6
	TMAX XT4-BREAKER OPERATOR SUB-ASM AFM	110C2400G7
	TMAX XT4-BREAKER OPERATOR SUB-ASM AFM T12	110C2400G8
	1/2X TMAX XT4-12" BREAKER STARTER/FEEDER SUB-ASM	110C2400G9
	XT4-BREAKER FEEDER AFM	110C2400G10
	1/2X TMAX XT4-12" BREAKER STARTER/FEEDER SUB-ASM T12	110C2400G11
24	XT4-BREAKER FEEDER AFM T12	110C2400G12
	TMAX XT2-BREAKER OPERATOR SUB-ASM	110C2401G1
	1/2X TMAX XT2-BREAKER STARTER/FEEDER SUB-ASM	110C2401G2
	TMAX XT2-DUAL FEEDER BREAKER OPERATOR SUB-ASM	110C2401G3
	TMAX XT2-BREAKER OPERATOR SUB-ASM-T12	110C2401G4
	1/2X TMAX XT2-BRKR STRTR/FDR SUB-ASM-T12	110C2401G5
	TMAX XT2-DUAL FEEDER BREAKER OPERATOR SUB-ASM-T12	110C2401G6
	TMAX XT2-BREAKER OPERATOR SUB-ASM-AFM	110C2401G7
	TMAX XT2-BREAKER OPER SUB-ASM-AFM-T12	110C2401G8



24

Item 26 – Starter / Contactor

Refer to Spare Recommendations and Parts List for your motor control center. If none is available, refer to catalog number as it appears on the device itself before ordering replacement parts.

—
28a
190B1692G1

—
28b
190B1631G1

—
28c
Power terminal blocks

—
29
Door latch (1/4 turn)

—
30
Unit frame latch
assembly (1/4 turn)

—
31 Vertical Wireway Door
Latch Assembly (1/4-turn)

Item 27 – Control Power Transformer
(120 Volt Secondary 60 Hz)

CPT (Standard)	480V Primary	600V Primary
Size 1 60 VA	30213600YDP1	30213600YDP25
Size 1/2 150 VA	30213600YDP300	30213600YDP301
Size 3/4 300 VA	30213600YDP7	30213600YDP30
1/2X Sz 1 Micron Transformer	MIC#B100-2989-5	-
CPT 150VA, 480/120 Size 1 and 2 w/o fuse block	9T58K0504G37	9T58K0504G37
CPT 300VA, 480/120 Size 1 and 2 with fuse block	9T58K0504G38	9T58K0504G38

Item 28 – Terminal Blocks

Type	Description	Part
Control Terminal Blocks		
Pull Apart	HD 3PT	190B1692G1
Stationary	Single 3-point T/B	190B1627P1
Stationary	Stationary HD 6PT	190B1631G1
Stationary	HD 12PT	190B1631G2
Stationary	HD 18PT	190B1631G3

—
28a

—
28b

—
28c

Item 29 – Door Latch (1/4 Turn)

Type	Description
LATCH, PR RLVG, RH, STD DR	270A2452G1
LATCH, PR RLVG, RH, HEX DR	270A2452G2
LATCH, PR RLVG, RH, TRI DR	270A2452G3
LATCH, PR RLVG, LH, STD DR	270A2452G4
LATCH, PR RLVG, LH, HEX DR	270A2452G5
LATCH, PR RLVG, LH, TRI DR	270A2452G6
LATCH, PR RLVG, RH, STD DR, NN	270A2452G7
LATCH, PR RLVG, RH, HEX DR, NN	270A2452G8
LATCH, PR RLVG, RH, TRI DR, NN	270A2452G9
LATCH, PR RLVG, LH, STD DR, NN	270A2452G10
LATCH, PR RLVG, LH, HEX DR, NN	270A2452G11
LATCH, PR RLVG, LH, TRI DR, NN	270A2452G12

—
29

Item 30 – Unit Frame Latch Assembly (1/4 Turn)

Type	Description
Unit Frame Latch Assembly (1/4 turn)	110C1572G1

—
30

Item 31 – Vertical Wireway Door Latch Assembly (1/4-turn)

Type	Description
Wire Trough Door Latch Assembly (1/4-turn)	270A2609G1

—
31

Item 32 – Pilot Device Bracket Escutcheon

Type	Description
6-unit device plate, blank (No Holes)	110C1039P100
3-unit device plate, blank (No Holes)	110C1089P100
6-unit device plate, 6 hole	110C1039P1
Plug Button Assembly (Black)	272A5650UWG2
Plug Button Assembly (Gray)	272A5650UWG4
Mounting Bracket	190B1512P1

—
32a

—
32b

—
32a
Blank

—
32b
6 hole

—
33a
190B1048G1

—
33b
190B1048G2

—
33c
190B1421G1

—
33d
190B1418G1

—
33e
Door button

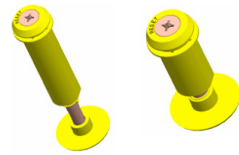
—
33f
Rubber plug

—
34
Vertical ground bus stab finger

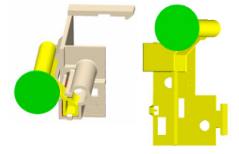
—
37
Cable clamps

Item 33 – Overload Relay Reset Assembly

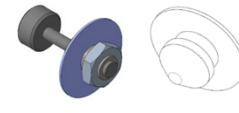
Product	Code
Door Mounted Reset	
Reset Button Assembly Bimetal Size 1, 3, & 4	190B1048G1
Reset Button Assembly Bimetal Size 2 & 5	190B1048G2
Reset Button Assembly Electronic Size 1	190B1048G1
Reset Button Assembly Electronic Size 2, 3, 4, & 5	190B1048G2
DOOR BUTTON FOR OL RESET	270A2380P1
RUBBER PLUG FOR OL RESET HOLE	270A2386P1
Clear Plastic OL Adapter	
OLR Reset Button Adapter Bimetal Size 1, 2, & 5	190B1421G1
OLR Reset Button Adapter Bimetal Size 3 & 4	190B1421G2
OLR Reset Button Adapter Electronic Size 1 thru 5	190B1418G1
O/L Reset Assembly	
Size 1 standard O/L	9000RSG1
Size 1 electronic O/L	9000RSG2
Size 2,5 standard O/L	9000RSG3
Size 2,5 electronic O/L	9000RSG4
Size 3,4 standard O/L	9000RSG5
Size 3,4 electronic O/O	9000RSG6



33a 33b



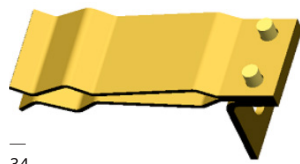
33c 33d



33e 33f

Item 34 – Vertical Ground Bus Stab Finger

Type	Description
Part Number	270A1032G1



34

Item 35 – Pilot Devices (Type CR104P)

Refer to Spare Recommendations furnished with your motor control center.

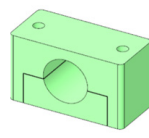
- Type CR104P Standard

Item 36 – Fuse Block

Type	Description
1-Pole In Line	CSC#FEC-11-11
1-Pole Midget	CSC#30311
1-Pole CC	CSC#30311R
2-Pole Class CC	CSC#30312R
3-Pole Class CC	CSC#30313R
1-Pole CC Pull Out Din Rail Mtg	CSC#23302-G
2-Pole CC Pull Out Din Rail Mtg	CSC#23312-G
3-Pole CC Pull Out Din Rail Mtg	CSC#23314-G
Fast Acting Fuse, Class T, 600Vac, 15 A	4600286393P
Fast Acting Fuse, Class T, 600Vac, 30 A	4600286394P
Fast Acting Fuse, Class T, 600Vac, 40 A	4600286395P
Fast Acting Fuse, Class T, 600Vac, 60 A	4600286397P
Fast Acting Fuse, Class T, 600Vac, 80 A	4600286398P
Fast Acting Fuse, Class T, 600Vac, 100 A	4600286402P
Fast Acting Fuse, Class T, 600Vac, 110 A	4600286403P
Fast Acting Fuse, Class T, 600Vac, 150 A	4600286404P
Fast Acting Fuse, Class T, 600Vac, 200 A	4600286405P
Fast Acting Fuse, Class T, 600Vac, 225 A	4600286475P
Fast Acting Fuse, Class T, 600Vac, 250 A	4600286406P
Fast Acting Fuse, Class T, 600Vac, 300 A	4600286407P
Fast Acting Fuse, Class T, 600Vac, 350 A	4600286476P
Fast Acting Fuse, Class T, 600Vac, 400 A	4600286477P
Fast Acting Fuse, Class T, 600Vac, 500 A	4600286478P
Fast Acting Fuse, Class T, 600Vac, 600 A	4600286479P
Fast Acting Fuse, Class L, 600Vac, 800 A	4600286494P
Fast Acting Fuse, Class L, 600Vac, 900 A	4600286495P

Item 37 – Cable Clamps

Type	Description
STANDARD CLEAT, 50 INCH DIA – KOZ 50-75	190B2199P4



37

40
Stab Power Harness

41
Fans and Filters

42
Barriers

43
Custom Breaker
Accessories

43a
110C2960P1

43b
270A2540G1

43c
270A2540G2

43d
110C2970P1

43e
110C2923P2

43f
110C2923P1

44
Miscellaneous

Item 40 – Stab Power Harness

Includes harness and stab fingers.
Combination Starter Units:

Function	NEMA Size	Stab Harness Part Number	
		Tin	Silver
Spectra 2S1W or 2S2W	1	E9000L8G2	E9000L8G4
	2	E9000L8G2	E9000L8G4
	3	E9000L4G2	E9000L4G8
	4	E9000L4G15	E9000L4G16
	4 (F-Frame)	E9000L4G10	E9000L4G4
FVNR/FVR Tmax XT2 Horizontal	1	E9000L8G1	E9000L8G3
FVNR/FVR Tmax XT2/XT4 Vertical	1-3	E9000L4G43	E9000L4G44
FVNR/FVR Tmax XT4 Vertical	4	E9000L4G4	E9000L4G10

NOTE: Above harnesses utilize standard ABB type THW (flamenol) wire/cable. Do not order above catalog numbers if your motor control center was ordered with special type power wire/cable.

Item 41 – Fans and Filters

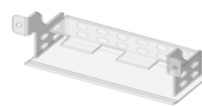
Type	Description
AC Fan, 115Vac, 230 CFM, Type 1	273A7844CWP7
AC Fan, 115Vac, 330 CFM, Type 1	ADDA#AK1781HB-AW
AC Fan, 115Vac, 71 CFM, Type 12	4600292137P
AC Fan, 115Vac, 147 CFM, Type 12	4600292140P
AC Fan, 115Vac, 453 CFM, Type 12	4600292141P
Muffin fan 120V only	MUFFINFANG1
Tarzan fan only	RMC#020169
Case fan assembly	110C1556G1
N3R fan assemblies	Refer to Factory
Spare filter mat for SK 3239.200 Rittal filter	3239066
Spare filter mat for SK 3237.200 Rittal filter	3237066
N3R Door Filter	75C143964P102



Figure 41

Item 42 – Barriers

Type	Description
BARRIER, XT5 24IN, INCOMING LINE SIDE	270A2703P1
BARRIER, XT5 30IN AND UP, INCOMING LINE SIDE	110C2784P2


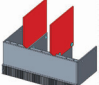
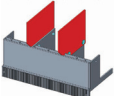
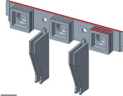
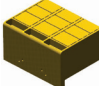
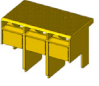


42

Torque Table Values

Bolt Size	Copper Joint		Aluminum Joint	
	Ft-lb	N-m	Ft-lb	N-m
5/16 – 18	5 – 9	7 – 12	6.5 – 9	9 – 12
3/8 – 16	12 – 16	16 – 22	10 – 15	14 – 20
1/2 – 13	30 – 39	41 – 53	25 – 35	34 – 47
5/8 – 11	65 – 80	88 – 108	35 – 45	47 – 61
3/4 – 10	125 – 150	169 – 203	50 – 75	68 – 102

Item 43 – Custom Breaker Accessories

Type	Description
43a 	MODIFIED HTC, XT7, SIDE CUT OUTS 110C2960P1
43b 	MODIFIED HTC, XT7, PHASE SEPARATORS 270A2540G1
43c 	MODIFIED HTC, XT7, SIDE CUT OUTS AND PHASE SEPARATORS 270A2540G2
43d 	MODIFIED CB TERMINAL, REAR COVER, XT5 110C2970P1
43e 	STANDARD HTC, XT5 110C2923P2
43f 	MODIFIED HTC, XT5 110C2923P1



44

Item 44 - Miscellaneous

	Code
Common Screws	
1/4 - 20 Thread Rolling screws – pack of 5	204B4139AAG11
10-32 Thread Rolling screws – pack of 5	204B4139AAG15
Rivets	
Plastic Nameplate rivets – pack of 6	204B4139AAG5
Blank Nameplate – Small – 6" Bucket 1" x 3"	
Black face	273A7916P3FC
White Face	273A7916P3EC
Blank Nameplate – Large – 12" Bucket & Larger .5" x 2.3"	
Black face	273A7916P3F3.5/2.3
White Face	273A7916P3E3.5/2.3
Labels – Danger Labels	
DANGER LABEL (3.74IN W x 6.4IN H)	252B3431P5
DANGER LABEL (4IN W x 3.45IN H)	252B3431P11
Joint Compound	
4oz. Tube	302A3747P3
Bucket Removal Tool	
Bucket Removal Tool	270A1581G1

—
ABB Inc.

305 Gregson Drive
Cary, NC 27511 USA
[abb.com\contacts](http://abb.com/contacts)

abb.com/lowvoltage

The information contained in this document is for general information purposes only. While ABB strives to keep the information up to date and correct, it makes no representations or warranties of any kind, express or implied, about the completeness, accuracy, reliability, suitability or availability with respect to the information, products, services, or related graphics contained in the document for any purpose. Any reliance placed on such information is therefore strictly at your own risk. ABB reserves the right to discontinue any product or service at any time.

© Copyright 2022 ABB. All rights reserved.