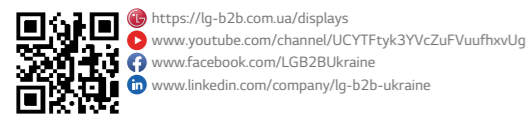


DIGITAL SIGNAGE

INFORMATION DISPLAY AND SOLUTIONS

2017 Edition 1.0



LG may make changes to specifications and product descriptions without notice.
Copyright © 2017 LG Electronics Inc. All rights reserved. "LG Life's Good" is a registered trademark of LG Corp.
The names of products and brands mentioned here may be the trademarks of their respective owners.

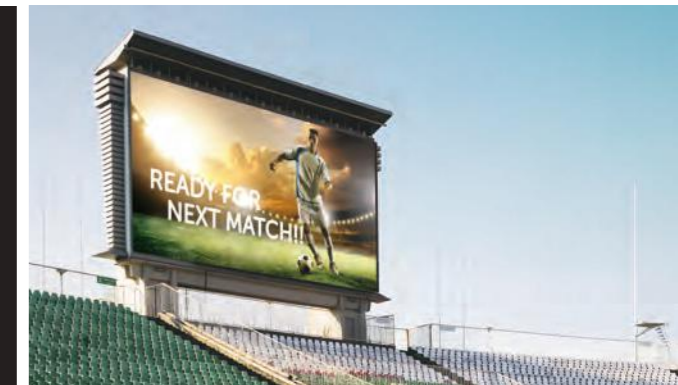
* All images used are for illustrative purposes only.



Contents



1. HIGHLIGHTS	04
2. LG SIGNAGE INTRODUCTIONS	
• OLED	08
• ULTRA STRETCH	12
• ULTRA HD	14
• VIDEO-WALL	16
• STANDARD SIGNAGE	18
• TRANSPARENT	21
• HIGH BRIGHTNESS	22
• SMART HYBRID COOLER	24
• INTERACTIVE	26
• MIRROR	28
• SUPERSIGN TV	29
• LED	30
• CONTENT PLAYER	32
• SIGNAGE SOFTWARE	33
3. SPECIFICATIONS	34
4. GLOBAL NETWORK	50



HIGHLIGHTS

LEADING TECHNOLOGY

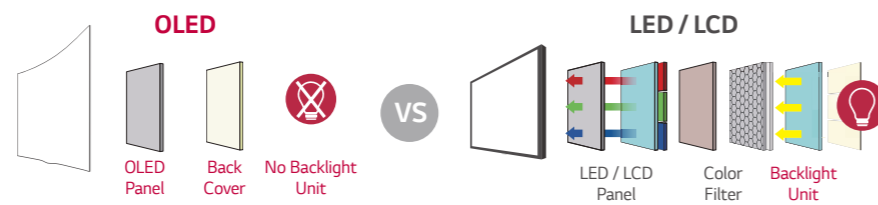
Take the next exciting leap into the future and change the way you inform your customers.

TRULY STATE OF THE ART, LG OLED SIGNAGE LG OLED

LG OLED is a new display technology that overcomes the limits of current displays in terms of picture quality and design.

- Perfect Black**
Pure black with self-lighting pixels.
- Perfect Color**
Accurate, stable color reproduction.
- Perfect Viewing Angle**
No color distortion from any viewing angle.
- Perfect Design**
Future displays with free form factors.

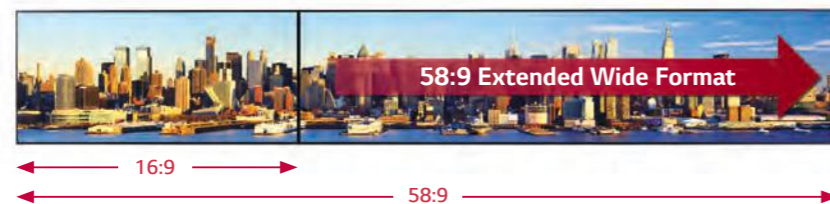
Key LG OLED technologies



86" 58:9 ULTRA STRETCH



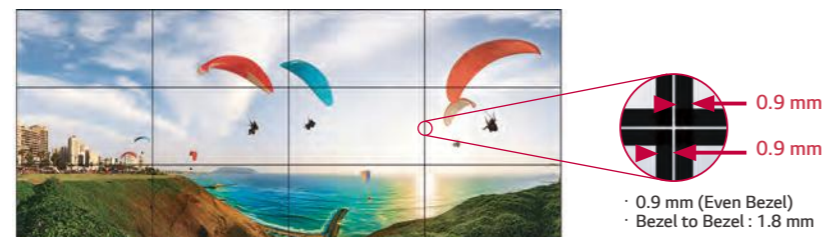
New experience with Ultra HD based on its unique 58:9 ratio.



THE WORLD BEST CLASS VIDEO-WALL



World's narrowest bezel display delivering stunning high picture quality in a seamless video wall.



*Nemko (Nogerois Elektriske Materiellkontroll) was established in 1933 as an institution for mandatory safety testing and national approval of electrical equipment to be marketed and sold in Norway. Since becoming an independent, self-owned foundation in 1991, it has provided worldwide testing and certification.



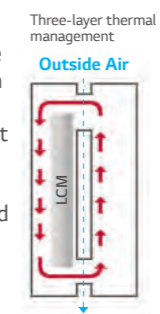
BEYOND ORDINARY EXPERIENCE

A Fresh and innovative way to engage, inform and thrill your customers as never before.

HIGH BRIGHTNESS ENCLOSURE WITH ADVANCED RELIABILITY

Enclosure signage boasts outstanding visibility and excellent reliability with clear picture quality and accurate information delivery even under extreme environmental changes.

Enhanced Thermal Management
Environmentally sealed structure for waterproofing and protection against brake dust and fumes. Three-layer thermal management prevents heating from the LCD, Circuit / Power board and Solar loading. Totally self-contained and suitable for outdoor use without an air filter.



High Operating Temperature
The panel offers superb reliability under high operating temperatures and reduces cooling fan usage.



SMART HYBRID COOLER WITH HYBRID VIEW

Clear transparent & True color expression
Strengthening in-store promotion with LG Smart Hybrid Cooler.



HIGHLIGHTS

ADVANCED SOFTWARE SOLUTION

Meet our total solution designed for various customers' needs.

LG webOS SMART SIGNAGE PLATFORM

Using advanced technology and an evolving platform, the system offers partners and customers a range of distinctive features.



Unmatched Interactive User Experience

A webOS smart signage platform supports dynamic interactive environments with multi-touch functions, BEACON mobile communication and sensor integration for user-oriented content.



Customizable Screen Layout and Media Formats

The webOS smart signage platform, perfectly geared to your intended use, enables users to display content on any sized screen layout, any multi media format and type.



Feeling Right at Home: Developer-friendly

The webOS smart signage is tailored to a range of commercial requirements and makes it easy to use the most common web-based programming languages while testing and debugging applications.



Lower Ownership Costs

An integrated webOS smart signage platform helps users save by reducing overall TCO. This eliminates the need to purchase an external media player and removes the cost of onsite servicing and maintenance visits.

SUPERSIGN OPTIMIZES CONTENT CREATION AND MANAGEMENT



Easy-to-control practical features for whenever LG Business Solutions are needed. LG Digital Signage offers comprehensive technology solutions with the latest digital products and features tailored to the needs of commercial environments.



SUPERIOR PICTURE QUALITY

Attract customers with our exceptionally high picture quality.

REVOLUTIONARY IPS TECHNOLOGY

IPS is free from blackening defects and offers lifelike color and wide viewing angles.

Consistent response times for reduced eye strain and exact color matching with original images

The IPS* panel has an extremely low response time standard deviation. This allows for smooth action scenes, greater clarity sports and vivid quality. Enjoy the same colors as the actual product. The IPS panel displays the color tone of the original image and a consistent color temperature.



Actual Image

IPS's Color Accuracy

*In-Plane Switching

Enjoy the Same Colors as the Actual Product in the Display.

IPS Technology has better liquid crystal control, allowing viewing of the screen from virtually any angle.



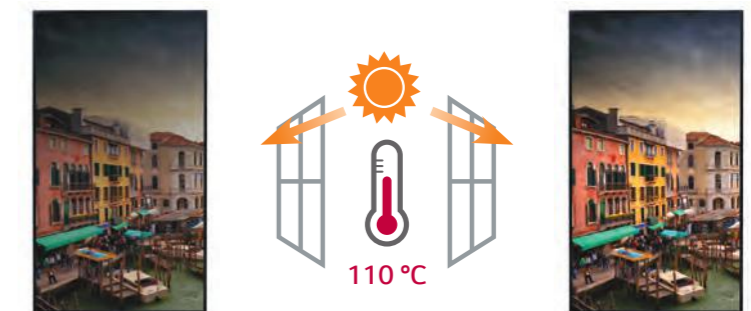
178°

Wide Viewing Angle

178°

High Brightness Reliability

Brightness decreases over time. LG's high brightness display sustains brightness levels for long periods. Even under direct sunlight, the IPS panel is free of blackening effects and provides superior quality for outdoor usage. This means power savings and no need for IR blockers or extra cooling systems. It also saves space, as no glass covers are needed for the monitors.



Conventional

LG

Artistic Space Beyond Display

With cutting-edge OLED technology, LG Electronics introduces an innovative OLED Signage with perfect picture quality and a revolutionary pencil-thin design, adding artistic value to display functionality.



DUAL-VIEW FLAT



WALL-PAPER



OPEN-FRAME



OPEN-FRAME



WHY OLED TECHNOLOGY

Perfect Black

Limitless contrast and the deepest blacks
Self-lighting pixels switch off completely to reproduce absolute blacks with no light bleed, offering infinite contrast.

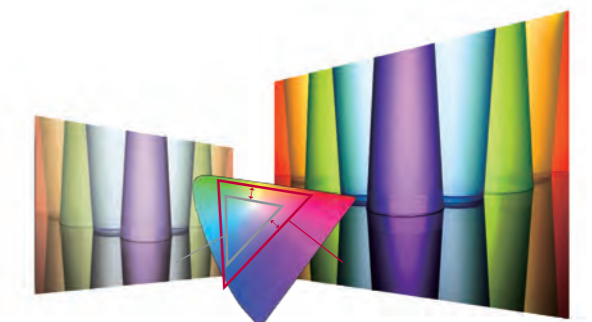


LCD

LG OLED Signage

Perfect Color

Accurate & stable color reproduction
Self-lighting pixels bring colors to life with superb accuracy.



LCD

LG OLED Signage

Perfect Viewing Screen

Wide viewing angle
LG OLED Signage delivers awe-inspiring picture quality across the entire screen, even from wide viewing angles.

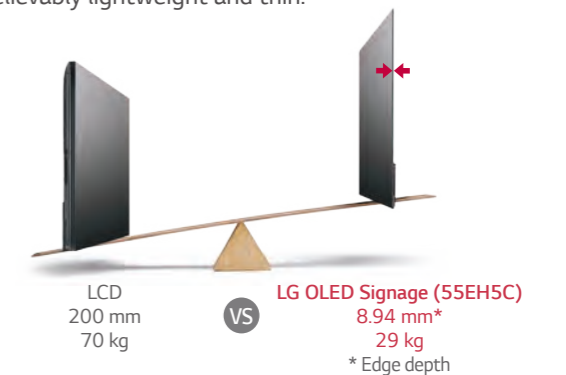


LCD

LG OLED Signage

Perfect Design

Slim and light
With just two layers, the LG OLED Signage Display is unbelievably lightweight and thin.



Artistic Space Beyond Display

With cutting-edge OLED technology, LG Electronics introduces an innovative OLED Signage with perfect picture quality and a revolutionary pencil-thin design, adding artistic value to display functionality.

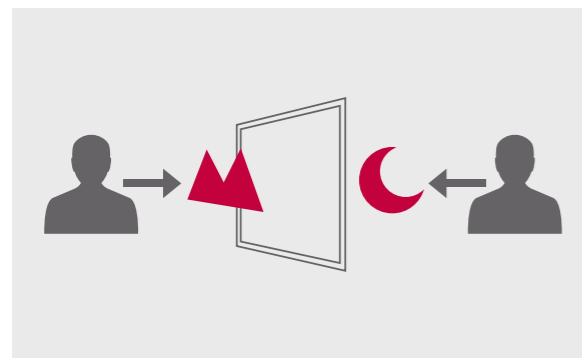
55" DUAL-VIEW FLAT OLED SIGNAGE EH5C

- Full HD: 1,920 x 1,080
 - Brightness: 400 cd/m² (APL* 25%)
 - Bezel: 2 mm (Off-bezel)
 - Dedicated Accessories for three Types of Installation
- ** Accessory kits purchased separately.



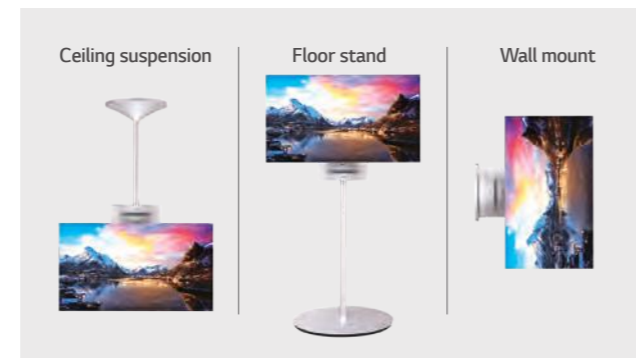
Two Multi-Use Displays

Two-way media experience and space saving thanks to the innovative slim design.



Three Types of Installation

Dedicated accessories available for ceiling, stand and wall mount.



55" WALLPAPER OLED SIGNAGE EJ5C

- Full HD: 1,920 x 1,080
- Brightness: 400 cd/m² (APL* 25%)
- Bezel: 1.2 mm (Off-bezel)

*Average Picture Level

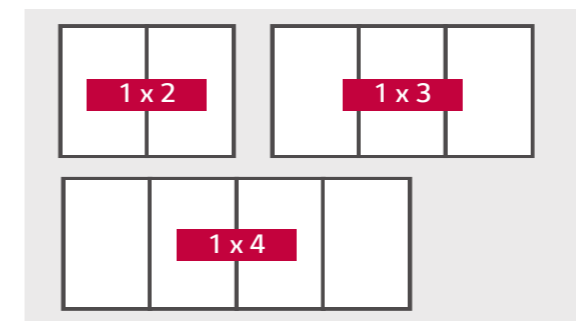
65" DUAL-VIEW CURVED TILING OLED SIGNAGE EE5PC

- Available in 1x2, 1x3, 1x4 model
 - Ultra HD: 3,840 x 2,160
 - Brightness: 450 cd/m² (APL* 25%)
 - Bezel to Bezel: 9.8 mm
- * Each model has 3 order codes.
Please Contact your sales representative for more information



Modular Design

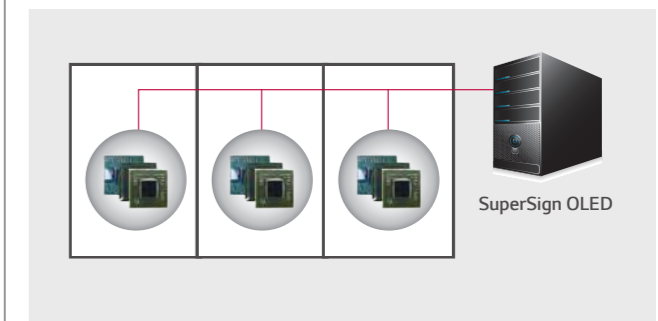
Modular design allows different layouts between 1 x 2 and 1 x 4 with the same design identity.



* Accessories include stand cover, top/side/bottom deco., cables, IR receiver, etc.

PC-less Playback

High performance SoC & high internal memory capacity (128 GB) enable perfect UHD-synced playback without the need for media players.



55" FIXED CURVE OPEN FRAME EF5C

- Minimum Curvature : Landscape ~2,000R, Portrait ~1,500R (In-curve & Out-curve)
- Full HD: 1,920 x 1,080
- Brightness: 400 cd/m² (APL* 25%)
- Bezel: 7.2 mm (Off-bezel)

* One product is composed of various order codes.
Please contact your sales representative for more information.
* Contact your sales representative for available curvature models.

*Average Picture Level

Ultra Stretch for Dynamic Digital Content

A new experience with a 58:9 widescreen that can display dynamic content based on the user's installation environment.



86" ULTRA STRETCH SIGNAGE BH5C/BH7C

- Resolution: 3,840 x 600
- Brightness: 500 cd/m² (86BH5C), 700 cd/m² (86BH7C)
- Multiple screen with PBP¹⁾ / PIP²⁾



High Resolution with extraordinary format (3,840 x 600)

Ultra HD large screen delivers an immersive viewing experience.



Conventional

Ultra Stretched Signage

58:9 Extended Wide Format

Dynamic content is delivered on one screen thanks to a new 58:9 bar-type widescreen format.



Conventional
(16:9)

Ultra Stretched Signage
(58:9)

4 Divided PBP in Landscape or Portrait

The Picture-by-Picture (PBP) feature allows you to divide a screen into four parts in landscape or portrait installations.



Single Digital Pillar

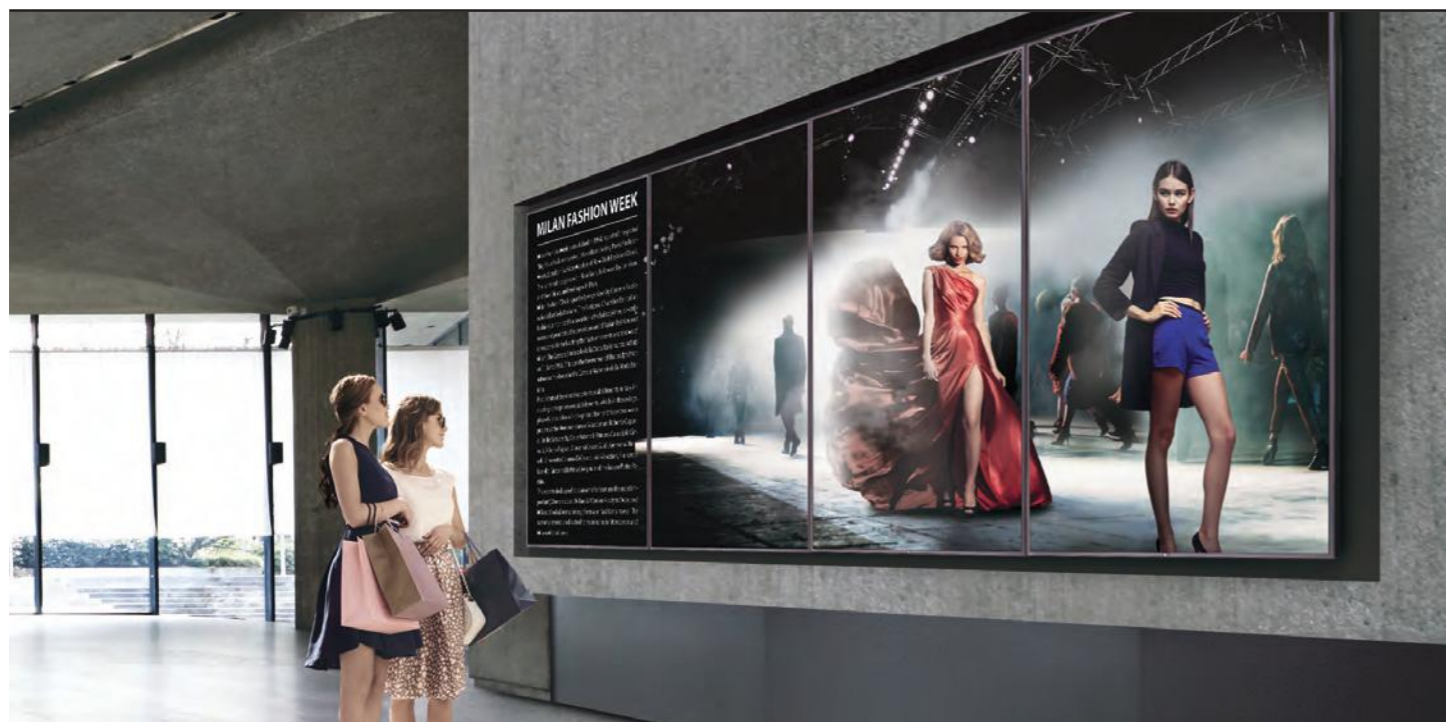
Quad Digital Pillar

ULTRA STRETCH PILLAR PL-S860/ PL-D860/ PL-F860

- Single Digital Pillar (W x H x A x B): 710 x 2,329 x 357 x 151 mm
- Quad Digital Pillar (W x H x A): 800 x 2,291 x 507 mm

1) PBP: Picture-By-Picture, 2) PIP: Picture-In-Picture

Immersive Ultra HD Screen with Smart Platform



86" / 75" / 65" / 55" / 49" MULTIPLE SCREEN SPLIT ULTRA HD DISPLAY UH5C/75UM3C

- Ultra HD: 3,840 x 2,160
- Brightness: 500 cd/m² (UH5C), 350 cd/m² (75UM3C)
- Multiple screen with PBP¹⁾ / PIP²⁾
- 24/7 operation
- Beacon-ready, Soft AP, Mirroring
- * UM3C: 75" only

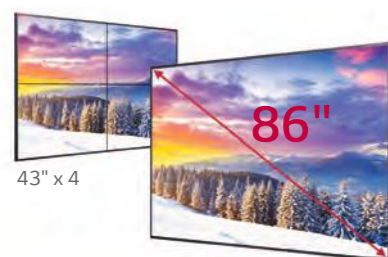


98" ULTRA HD PREMIUM LARGE DISPLAY LS95D

- Ultra HD: 3,840 x 2,160
- Brightness: 500 cd/m²
- 24/7 operation
- *Platform Refresh Model (LS95D) will be released in 4Q, 2016

Seamless Content Delivery on a Large Screen

Providing immersive, high-quality widescreen viewing on seamless 86" and 75" ultra large screens.



Super High Resolution 3,840 x 2,160 (Ultra HD)

Ultra HD resolution offers a whole new level of picture quality, boasting picture definition four times higher than full HD.



Multiple Screen with PBP or PIP

The PBP (Picture-By-Picture) and PIP (Picture-In-Picture) features offer four divided split screens in landscape and portrait formats.



84" ULTRA HD PREMIUM LARGE DISPLAY WS70MS/70BS

- Ultra HD: 3,840 x 2,160
- Brightness: 500 cd/m² (84WS70MS), 350 cd/m² (84WS70BS)
- 24/7 operation (84WS70MS), 16/7 operation (84WS70BS)



1) PBP: Picture-By-Picture, 2) PIP: Picture-In-Picture

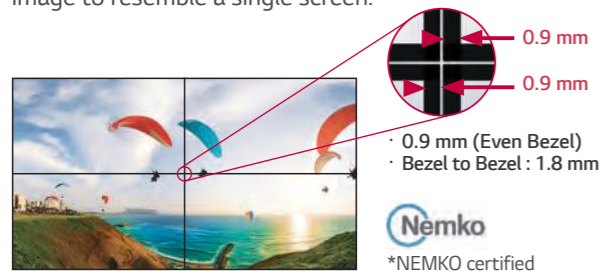
World's Best Video Wall

LG's near-seamless video wall solutions make various display formats possible. They can be extended easily to maximize attention.



Narrowest Bezel

The narrowest bezel enables the overall video wall image to resemble a single screen.



Uniform Brightness

LG's LED backlight technology guarantees high brightness uniformity to ensure a clear picture. On other screens, certain spots may appear darker than others, but the new VH/VM series generates high visibility and a consistent brightness across the whole screen.



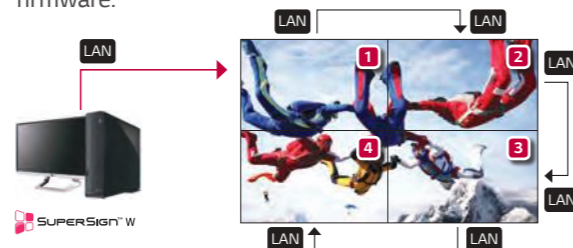
Image Gap Reduction

The VH/VM series includes an image improvement algorithm that can adjust to objects located within the bezel boundary for a seamless viewing experience.



LAN Daisy Chain Performance

A LAN daisy chain allows you to execute commands to control and monitor the screens and even update their firmware.



55" / 49" WORLD'S BEST VIDEO WALL 55VH7B/VM5B, 49VH7C/VM5C

- Full HD: 1,920 x 1,080
- Brightness: 700 cd/m² (VH7B/C), 500 cd/m² (VM5B/C)
- Panel bezel: 0.9 mm (L/R/T/B even bezel)
- *Bezel to bezel: 1.8 mm / NEMKO certified
- 24/7 operation, LAN daisy chain
- Image gap reduction



49" SUPER NARROW 3.5 mm BEZEL VIDEO WALL VL5B

- Full HD: 1,920 x 1,080
- Brightness: 450 cd/m²
- Bezel to bezel: 3.5 mm
- 24/7 operation



55" / 47" (47" LV35A only) SUPER NARROW 3.5 mm BEZEL VIDEO WALL LV77/75/35A

- Full HD: 1,920 x 1,080
- Brightness: 700 cd/m² (55LV77A), 500 cd/m² (55LV75/35A), 450 cd/m² (47LV35A)
- Bezel to bezel: 3.5 mm, 4.9 mm (47LV35A)
- 24/7 operation



47" 4.9 mm BEZEL VIDEO WALL WV50/B

- Full HD: 1,920 x 1,080
- Brightness: 800 cd/m² (WV50), 500 cd/m² (WV50B)
- Bezel to bezel: 4.9 mm
- 24/7 operation

A Wide Range of Standard Signage (22"~65")

More potential buyers and visitors can be reached through LG's versatile displays.



55" / 49" / 42" STANDARD PREMIUM DISPLAY WITH webOS LS75C/LS73C

- Full HD: 1,920 x 1,080
- Brightness: 700 cd/m² (LS75C), 500 cd/m² (LS73C)
- 24/7 operation
- webOS 3.0
- Multiple screen with PBP¹⁾ / PIP²⁾



65" / 55" / 49" / 43" / 32" STANDARD PERFORMANCE DISPLAY WITH webOS SM5C/SM5KC*

- Full HD: 1,920 x 1,080
- Brightness: 450 cd/m², 400 cd/m² (32")
- 24/7 operation
- webOS 3.0
- Multiple screen with PBP¹⁾ / PIP²⁾

* SM5KC: Built-in speaker model

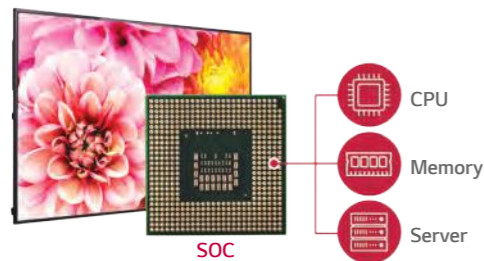


55" / 49" / 43" / 22" (22": 22SM3B ONLY) STANDARD ESSENTIAL DISPLAY WITH webOS SM3C/22SM3B

- Full HD: 1,920 x 1,080
- Brightness: 350 cd/m² (SM3C), 250 cd/m² (22SM3B)
- webOS
- 18/7 operation, BEACON, SoftAP, Mirroring, Quad Core SoC

Quad Core SoC*

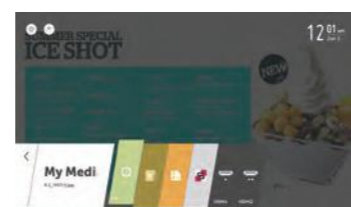
The High Performance SoC can execute several tasks at once and provides smooth content playback.



*SoC : System-on-Chip

webOS

The webOS platform provides easy and convenient tools to create content. LG's SDK* and technical supports make content development and management easier.

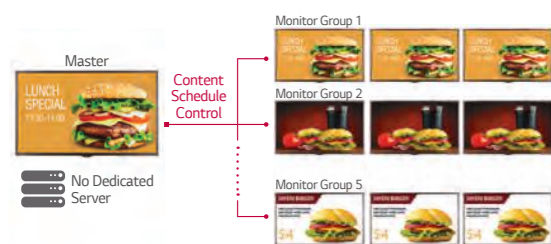


<http://developer.lge.com/webOSSignage>

*Software Development Kit

Group Manager

Content can be created, distributed and controlled by signage without a dedicated PC or server.



PBP (Picture-By-Picture) / PIP (Picture-In-Picture)

PBP (Picture-By-Picture) and PIP (Picture-In-Picture) features enable you to compose various layouts for several digital devices.



1) PBP: Picture-By-Picture, 2) PIP: Picture-In-Picture

A Wide Range of Standard Signage (22" ~ 65")

More potential buyers and visitors can be reached through LG's versatile displays.



55" / 49" / 42"
STANDARD PREMIUM DISPLAY
SH7DB

- Full HD: 1,920 x 1,080
- Brightness: 700 cd/m²
- 24/7 operation
- 7.4 mm even bezel



55" / 49" / 43" / 32"
STANDARD PERFORMANCE DISPLAY
SL5B

- Full HD: 1,920 x 1,080
- Brightness: 450 cd/m²
- 18/7 operation, 24/7 operation (32")
- OPS-ready (32")



55" / 49" / 43"
STANDARD ESSENTIAL DISPLAY
SE3C

- Full HD: 1,920 x 1,080
- Brightness: 300 cd/m²
- 16/7 operation



65" / 55" / 49" / 43" / 32"
STANDARD ESSENTIAL DISPLAY
SE3B/SE3KB*

- Full HD: 1,920 x 1,080
- Brightness: 400 cd/m² (65"), 350 cd/m² (55", 49", 43", 32")
- 18/7 operation
- * SE3KB: Built-in speaker model

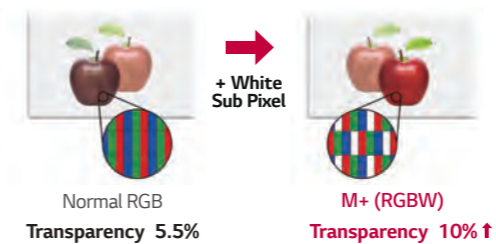
Clear Transparency & True Color Expression

An IPS transparent panel display provides superb wide viewing angles and accurate colors, while creating enhanced clarity for effective advertising showcases.



Higher Transparency

The M+ (RGBW) panel enables greater transparency than conventional RGB panels to increase image visibility.



Open Frame & Landscape/Portrait Mode

Adapts to any customer's needs and its open frame enables design at an affordable price. Can be used in landscape or portrait mode.



55" / 49"
TRANSPARENT DISPLAY
WFB

- Full HD: 1,920 x 1,080
- Transparency rate: 10% (55"), 9.5% (49")



32"
TRANSPARENT DISPLAY
LW55A/WFC

- Full HD: 1,920 x 1,080
- 24/7 operation



Outstanding Visibility with Advanced Reliability

With its excellent readability and color expression, LG's High Brightness is perfect for outdoors advertising.



75" / 55" ENHANCED BRIGHTNESS ENCLOSURE DISPLAY WITH webOS XE3C

- Enclosure
- Full HD: 1,920 x 1,080
- Brightness: 3,000 cd/m²
- Operating Temperature: -30°C to 50°C
- Dust & Humidity Protection Designed with IP56 Rating



75" / 55" / 49" FAN-LESS WINDOW-FACING DISPLAY WITH webOS XS2C/XS2B/49XS1C

- Window-facing
- Ultra HD: 3,840 x 2,160 (75XS2C)
- Full HD: 1,920 x 1,080 (55XS2C, XS2B, 49XS1C)
- Brightness: 2,500 cd/m², 1,500 cd/m² (49XS1C)
- Depth: 116 mm (75XS2C), 89 mm (55XS2C, 55XS2B), 83.5 mm (49XS2B), 32 mm (49XS1C)
- Fan-less design for noise reduction



Increased Brightness

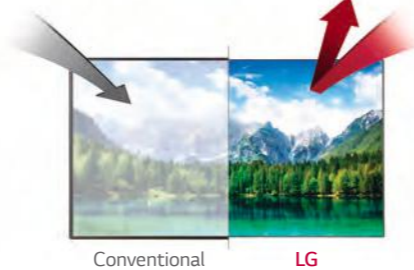
Brightness has been increased to 3,000 cd/m² making the XF3C the ultimate screen for outdoor visibility.



*XE3C specification

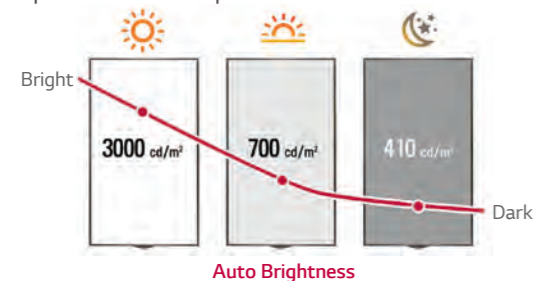
Anti-reflection

Less interference between reflected external light & back light thanks to anti-reflection coating.



Smart Brightness Control

The auto-brightness sensor and preset time scheduler save power whenever possible.



*XE3C specification

Dust & Humidity Protection

The conformal coating enhances circuit board reliability by protecting it from dust, iron shavings, humidity and other harsh conditions.



75" / 55" / 49" ENHANCED BRIGHTNESS OPEN-FRAME DISPLAY WITH webOS XF3C

- Open-frame
- Ultra HD: 3,840 x 2,160 (75")
- Full HD: 1,920 x 1,080 (55", 49")
- Brightness: 3,000 cd/m²
- Operating Temperature: 0°C to 50°C
- High resistance to blackening defect (Tni: 110°C)

New Hybrid View Concept

LG Smart Hybrid Cooler is a built-in transparent signage display and a cooler. It displays digital content on the display while allowing customers to view the beverages in the cooler.



49" / 32"
SMART HYBRID COOLER

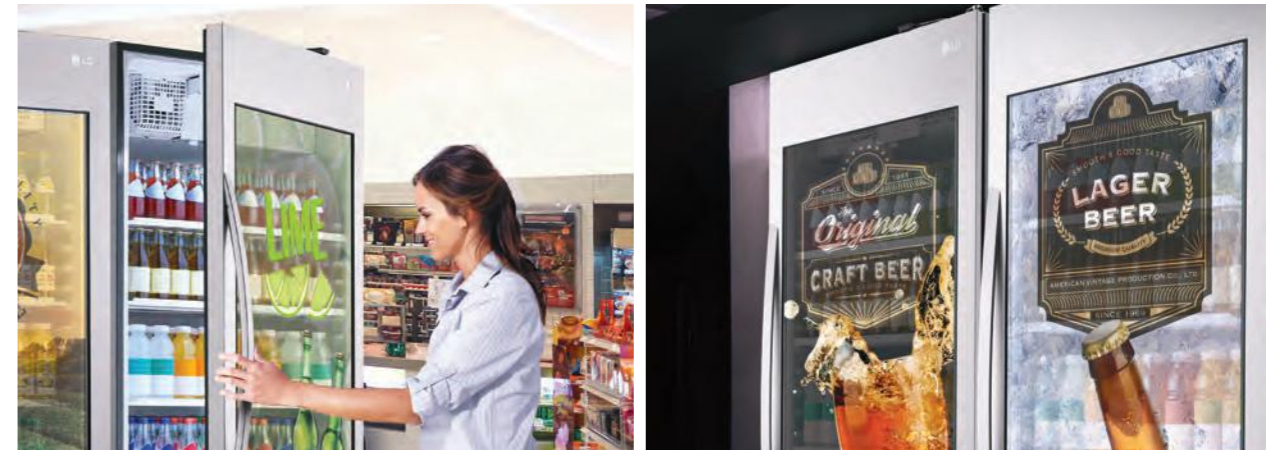
WEC

- Smart hybrid cooler
- Full HD: 1,920 x 1,080
- Transparency rate: 9.5% (49WEC)
- *32WEC will be released in 1Q, 2017



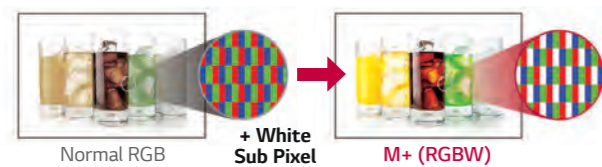
Hybrid View with Proximity Sensor

With proximity sensor enabled, the display switches from advertising mode to transparent mode enabling see-thru view.



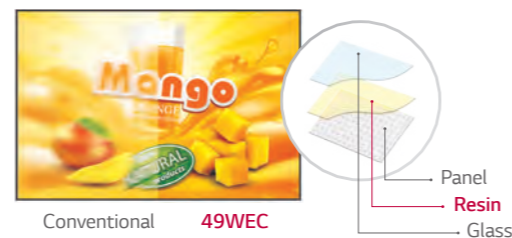
Enhanced Brightness

Specially designed for the LG Smart Hybrid cooler, the M+ panel (with additional white pixel & enhanced transparency) renders brighter images for a vivid digital content.



Direct Bonding Technology

By eliminating air gaps between the door glass and the transparent LCD panel, the LG Smart Cooler offers unprecedented image and color accuracy.



Overlay Touch & Multi-Touch Experience

LG's touch technology provides smooth, accurate 10-point multi-touch for your interactive needs.



84" ULTRA HD LARGE MULTI-TOUCH DISPLAY TR3B

- Ultra HD: 3,840 x 2,160
- Brightness: 350 cd/m² (typ)
- Bezel: 34 mm
- Built-in 10-point multi-touch
- Brightness: 350 cd/m² (Typ)
- Ghost-free touch (IR Spread)



75" / 65" / 55" / 49" / 43" / 32" PERFECT FIT OVERLAY TOUCH KT-T Series

- 10-point multi-touch
- Compatible products
 - KT-T751 (75"): UH5C, UM3C
 - KT-T651 (65"): SE3(K)B, SM5(K)B/C
 - KT-T550 (55"): SE3(K)B/C, SM3B/C, SL5B/C, SM5(K)B/C
 - KT-T490 (49"): SE3(K)B/C, SM3B/C, SL5B/C, SM5(K)B/C
 - KT-T430 (43"): SE3(K)B/C, SM3B/C, SL5B/C, SM5(K)B/C
 - KT-T320 (32"): SE3(K)B/C, SM5(K)B/C

*32SL5B is not compatible with touch overlay



10-Point Multi-Touch Experience

Offers a more realistic touch experience, recognizing up to 10 simultaneous touches without needing a separate pen.



2 - 6 Point Competitor

10 Point LG

Ghost Free Multi-Touch Experience

Touch the screen for 'No Ghosting' writing and drawing, enabling clean, seamless navigation.



Ghosting

LG Ghost-free

10" SMALL & TOUCH DISPLAY SM3TB

- HD: 1,280 x 800
- Brightness: 400 cd/m²
- Bezel: 14 mm (Even bezel)
- Built-in touch
- 16/7 operation
- PoE (Power over Ethernet)

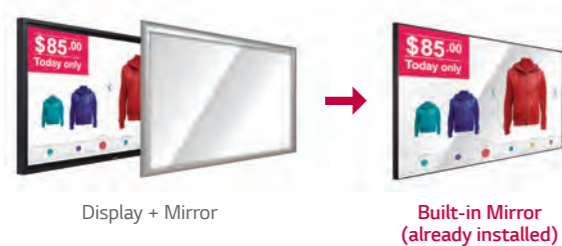
Mirror Signage for Specialized Showcasing

LG's mirror signage draws customers in when space and engagement time are limited in fast-paced retail environments.



Installation Convenience

No need for additional installations.



Add Creative Options

Use sensors and content for maximum exposure. Add multi-touch, proximity sensors and gestures tailored to the integrator/content provider.

- increases content exposure
- customized to each retail environment

Live TV and Advertisements on One Screen

SuperSign TV includes a built-in TV tuner to broadcast TV programs and deliver advertisements simultaneously.



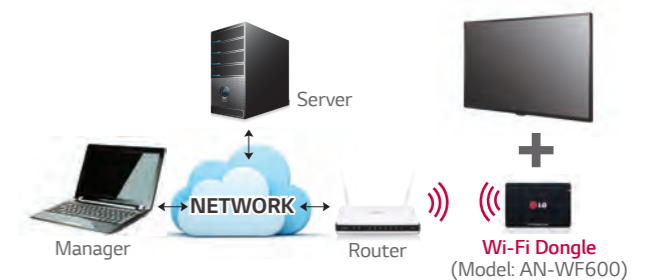
Fail over

Enables content to be displayed without dead spots when none of the external inputs are working. The monitor switches the signal automatically.



Wi-Fi Dongle Ready

SuperSign TV supports Wi-Fi USB dongle connection for convenient content distribution.



49" MIRROR DISPLAY MS75A-7BB

- Full HD: 1,920 x 1,080
- Brightness: 630 cd/m²
- Bezel: 8.4 mm (Even bezel)
- Built-in Mirror
- webOS
- Wi-Fi dongle ready, SNMP, Fail-over
- OPS Compatible, 24/7 operation



55" / 49" / 43" SUPERSIGN TV LW540S

- Full HD: 1,920 x 1,080
- Brightness: 300 cd/m²
- Bezel: 43" - 9.8 mm (L/R/U), 12.8 mm (B)
- Bezel: 49" - 9.8 mm (L/R/U), 13.4 mm (B)
- Built-in Speaker and TV tuner

- USB plug and play
- RTC, NTP, Fail-over (Internet memory only)
- Wi-Fi dongle ready
- SuperSign W/Lite/C/Simple Editor



Smart LED Signage

LG smart LED signage maximizes advertising effectiveness by delivering rich, dynamic content in any environment.



INDOOR LED SIGNAGE LAS Series

Indoor signage must display a sharp image without distortion from a variety of angles, and should be operated simply and easily in order to effectively increase ad exposure.



Color Processing

281 Trillion Colors with 16-bit Video Processing
Providing Vivid Color (16Bit Color Process)



8bit

16bit

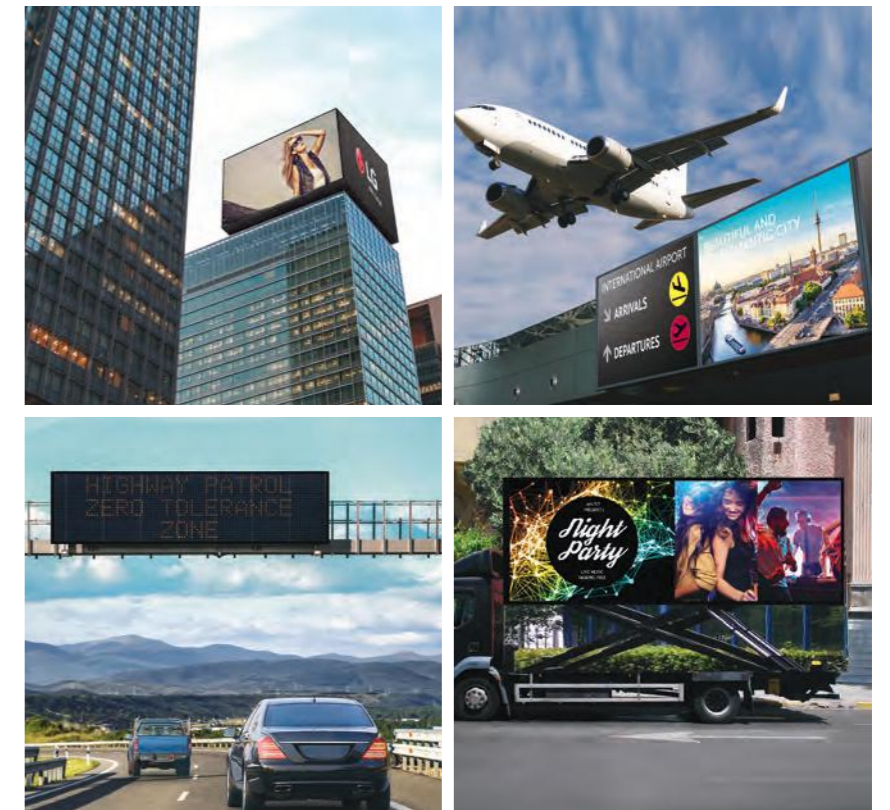
Extended Lifetime

LG LED Indoor Signage is designed to last for over 100,000 hours, even under the hottest, coldest and wettest conditions.



OUTDOOR LED SIGNAGE LBS Series

Enhanced waterproofing and a rigid structure, combined with high brightness and deep contrast make LG LED Outdoor Signage exceptional.



Diagnostic System

Intelligent Diagnosis for real-time monitoring.
(Error status / Brightness / Upgrade)



Easy Mobile Operation

Content : Create image content and playlists
Schedule : Set and modify content scheduling
Distribution : Distribute content



PREMIUM DOCKING-TYPE PLAYER

MP700

- Intel® Core i5-3610ME 2.7 GHz (Dual Core)
- Intel® Core i7-3610QE 2.3 GHz (Quad Core)
- Mobile Intel® QM77
- Windows Embedded Standard 7 Professional (64bit)
- Full HD x 4 or Ultra HD x 1
- Maximum Resolution 3,840 x 2,160 @ 30 Hz (DP)
- Maximum Resolution 1,920 x 1,080 @ 75 Hz (RGB)



PREMIUM DOCKING-TYPE PLAYER

MP500-B

- Intel® Core i5-520M Processor 2.40 GHz (Dual Core)
- Windows Embedded Standard, Windows7 Embedded
- Full HD x 2
- Maximum Resolution 2,560 x 1,600 @ 60 Hz (DP)
- Maximum Resolution 1,920 x 1,200 @ 60 Hz (HDMI)



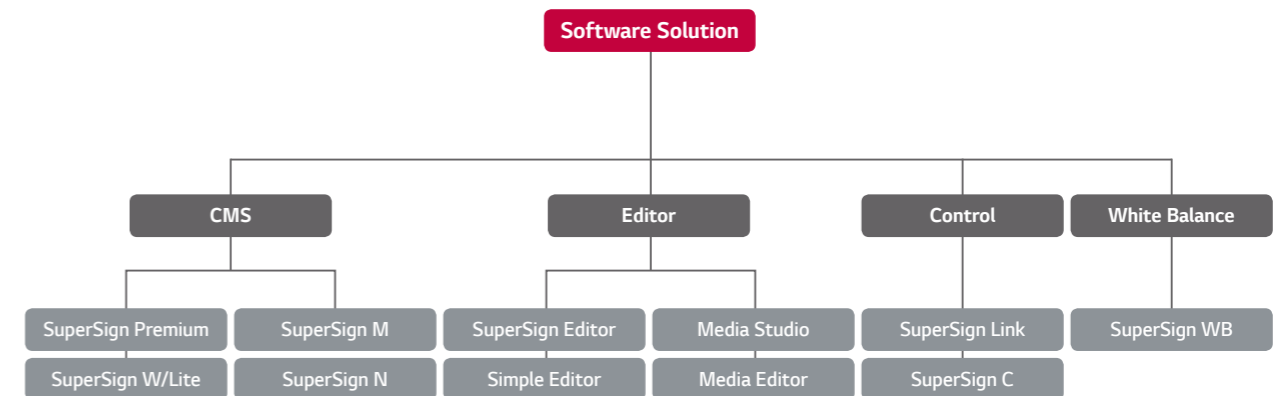
EXTERNAL FANLESS COMPETITIVE PLAYER

MP500-F

- Intel® Celeron Processor N2930 1.83GHz/ 2.16GHz (Burst) (Quad Core)
- Windows Embedded Standard 7 Professional (32bit)
- Full HD x 2
- Maximum Resolution 1,920 x 1,080 @ 60 Hz (DP)

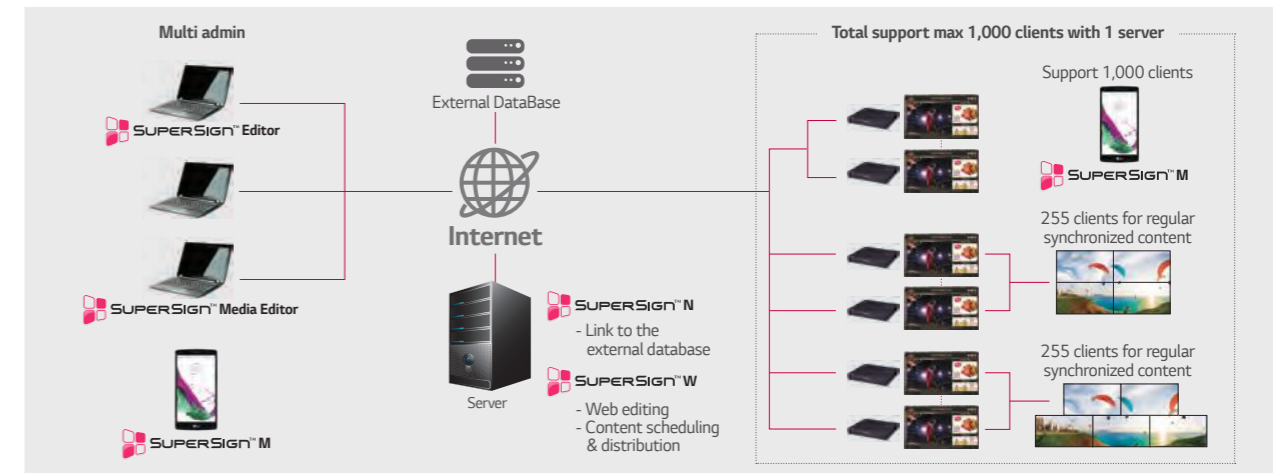


SuperSign Overview



CMS

Signage Content Management Software. Signage Content Editing Software. You can easily create, schedule and distribute the content you want with various templates provided by SuperSign CMS.



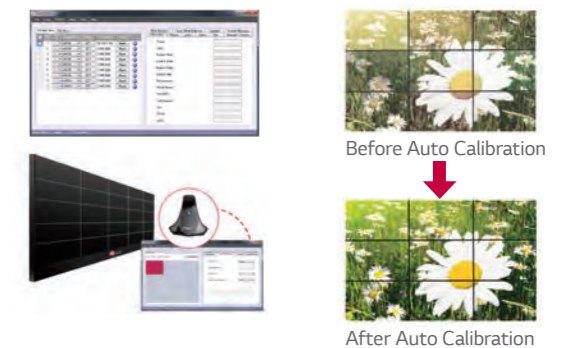
Editor

- Signage Content Editing Software.
- Create content and playlists, distribute through network or USB
 - Convert various codecs and containers for the LG Signage
 - Configure the desired layout with template



Control & White Balance

Signage Management Software & White Balance Calibration software. SuperSign C enables remote control of multiple monitors via networks and RS232 serial. The Auto White Balance feature adjusts the video wall easily and intelligently for the optimum video wall solution.



SPECIFICATIONS

		OLED			
		55EH5C	65EE5PC,65MODLC,65CVR4C	55EJ5C	55EF5C
Panel	Screen Size	55"	65"	55"	55"
	Panel Technology	OLED	OLED	OLED	OLED
	Aspect Ratio	16:9	16:9	16:9	16:9
	Native Resolution	1,920 x 1,080 (FHD)	3,840 x 2,160	1,920 x 1,080 (FHD)	1,920 x 1,080 (FHD)
	Brightness	100/400 cd/m ² (APL* 100% / 25%)	140/450 cd/m ² (APL* 100% / 25%)	100/400 cd/m ² (APL* 100% / 25%)	100/400 cd/m ² (APL* 100% / 25%)
	Contrast Ratio	100,000:1	100,000:1	100,000:1	100,000:1
	Viewing Angle (H x V)	178 x 178	120 x 120	178 x 178	178 x 178
Guaranteed Operating Hour	18 hrs / 7 days (moving video only)	12 hrs / 7 days (moving video only)	18 hrs / 7 days (moving video only)	18 hrs / 7 days (moving video only)	
Connectivity	Input	HDMI (1+1), DP (1+1), DVI-D (1+1)	HDMI	HDMI, DP	HDMI, DP
	Output	Audio (1+1)	NA	DP, Audio	DP, Audio
	External Control	RS232C In/Out (1+1), RJ45 In (1+1), IR Receiver (Internal), USB 2.0 (1+1), USB 3.0 (1+1)	RS232C, RJ45, IR Receiver	RS232C In/Out, RJ45 In/Out, IR In/Out (W/ RS232C Out Port)	RS232C In/Out, RJ45 In/Out, IR In/Out (W/ RS232C Out Port)
Physical Specification	Bezel Width	2, 2, 2, 2 mm (T,B,L,R) *Off-bezel	15.0, 26.0, 13.2, 13.2 mm (T,B,L,R) *Off Bezel (Set Deco Bezel)	7.2, 10.3, 6.6, 6.6 mm (T,B,L,R, Panel Only) 1.2, 1.2, 1.2, 1.2 mm (Off Set Bezel) 9.3, 12.4, 8.7, 8.7 mm (On Set Bezel)	Off-bezel, T,B,L,R: 7.2 / 7.2 / 7.2 / 7.2 mm On-bezel, T,B,L,R: - 2000R Concave : 9.9 / 13 / 8.5 / 8.5 mm - 2000R Convex : 9.9 / 13 / 10.7 / 10.7 mm - 1500R Concave : 8.75 / 11.8 / 9.3 / 9.3 mm - 1500R Convex : 11 / 14.1 / 9.3 / 9.3 mm Head: 1. Landscape (W x H) -2,000R, Concave: 1213.7 x 704.1 mm -2,000R, Convex: 1214.2 x 704.1 mm 2. Portrait (W x H) -1,500R, Concave: 1229 x 700.7 mm -1,500R, Convex: 1229 x 701.2 mm 3. Landscape/Portrait (D) - not affected by orientation/curvature - Module Only: 21.4 mm (incl. case top) - Module + Center Bar: 30 mm - Module + Center Bar + T-Con Box: 41.2 mm - Module + Center Bar + T-Con Box + Signage Box: 91.2 mm T-Con Box: 312.2 x 213.4 x 16 mm Signage Box: 412.6 x 222.4 x 64.3 mm
	Monitor Dimension (W x H x D)	Head: 1,227.6 x 702.7 x 7.94 mm (Edge depth: 8.94 mm) Signage Box: 470.1 x 402.8 x 75 mm	(1x4 Model) Display: 3,123 x 2,120 x 8.54 mm (Module) *The depth of stand neck: 99.0 mm	Head: 1,227 x 702.1 x 3.65 mm, Signage Box: 420 x 230 x 75 mm	Head: 11 kg T-CON Box: 1.6 kg Signage Box: 4.3 kg
	Weight (head)	Head: 21 kg Signage Box: 8 kg	(1 x 4 Model) 380 kg	Head: 5.5 kg, Signage Box: 5.3 kg, Wall Bracket: 1.8 kg	Head: 11 kg T-CON Box: 1.6 kg Signage Box: 4.3 kg
	Carton Dimensions (W x H x D)	1,344 x 987 x 269 mm (Inner)	1,040 x 860 x 1,313 mm (65EE5PC, based on 1 x 4, incl. pallet height) 2,264 x 1,282 x 1,053 mm (65CVR4C, incl. pallet height) 1,960 x 1,140 x 1,086 mm (65MODLC, based on 1 x 4, incl. pallet height)	1,383 x 834 x 252 mm	1,370 x 940 x 355 mm
	Packed Weight	32.6 kg	1 x 4 Model + Packing: 528 kg - 65EE5PC: 190 kg (1 x 4) - 65CVR4C: 198 kg (1 x 4) - 65MODLC: 140 kg (1 x 4)	22.5 kg	74 kg (Panel 3ea, T-CON Box 3 ea, Signage Box 3 ea)
	VESA™ Standard Mount Interface	NA	NA	NA	NA
	Environment	Operation Temperature Range 0°C to 40°C Operation Humidity Range 10% to 80%	0°C to 40°C 10% to 80%	0°C to 40°C 10% to 80%	0°C to 40°C 10% to 80%
	Power	Power Supply 100-240V~, 50/60Hz Power Consumption Typical 375 W	100-240V~, 50/60Hz 230 W	100-240V~, 50/60Hz 190 W	100-240V~, 50/60Hz 190 W
	Standard (Certification)	Safety UL / cUL / CB / TUV / KC EMC FCC Class "A" / CE / KCC ErP / Energy Star Yes / NA	NA FCC Class "A" / CE / KCC Yes / NA	UL/cUL/CB/TUV/KC FCC Class "A"/CE/KCC Yes / NA	UL/cUL/CB/TUV/KC FCC Class "A"/CE/KCC Yes / NA
	Media Player Compatibility	OPS Type Compatible Yes External Media Player Attachable Yes SuperSign OLED Yes SuperSign W / C Yes / Yes	NA NA Yes NA / Yes	Yes Yes Yes NA / Yes	Yes Yes Yes NA / Yes
Accessories	Basic Remote Controller (include battery 2 ea), Power Cord, QSG, Mini HDMI Cable (3 M x 2 ea, for connection between head and signage box), Power Hanness Cable (3 M x 2 ea, for connection between head and signage box), Regulation Book, Phone to RS232C Gender, Jack Cover, Signage Box Mounting Bracket Optional OPS Kit (KT-OPSA), Fixed Ceiling Mount Kit (ACC-CF-EH5C), Rotational Ceiling Mount Kit (ACC-CR-EH5C), Wall Mount Kit (ACC-W-EH5C), Stand Kit 1 (ACC-S-EH5C), Stand Kit 2 (ACC-S1-EH5C), Signage Box Cover (ACC-C-EH5C)	Remote Controller (include battery 2 ea), Power Cord, HDMI Cable, DP Cable, RS232C Cable 8ea, LAN Cable 9ea, QSG, Regulation Book NA	Remote Controller (includes 2 ea Batteries), Cable (Connection between screen and signage box), Power Cord, DP Cable, RS-232C Cable, RS-232C Gender, LAN Cable, IR Receiver, Manual (ESG, EIG), Wall-mount Plate (includes screws), Harness Locking Cover, Set Install Guide, Signage Box Bracket (U-Leg), FPC Cable Cover NA	Remote Controller (includes 2 ea Batteries), Power Cord, QSG, Mini HDMI Cable (3 M x 2 ea, for connection between head and signage box), Power Hanness Cable (3 M x 2 ea, for connection between head and signage box), Regulation Book, Phone to RS232C Gender, Jack Cover, Signage Box Mounting Bracket Accessory Type1 (Case/Top/Bar): A1L****EF5C, A1P****EF5C Accessory Type2 (Jig): A2L****EF5C, A2P****EF5C	

* Average Picture Level
* 1+1 means 1 input for 1 each screen.

		ULTRA STRETCH				ULTRA HD			
		86BH7C/BH5C	UH5C/75UM3C	LS95D	WS70MD/BD				
Panel	Screen Size	86"	86", 75", 65", 55", 49"	98"	84"				
	Panel Technology	IPS	IPS	IPS	IPS				
	Aspect Ratio	58:9	16:9	16:9	16:9				
	Native Resolution	3,840 x 600 (UHD)	3,840 x 2,160 (UHD)	3,840 x 2,160 (UHD)	3,840 x 2,160 (UHD)				
	Brightness	BH7C: 700 cd/m ² (Typ), BH5C: 500 cd/m ² (Typ)	500 cd/m ² (UH5C), 350 cd/m ² (75UM3C)	500 cd/m ²	WS70MD: 500 cd/m ² , WS70BD: 350 cd/m ²				
	Contrast Ratio	1,100:1 (Typ)	1,200:1 (86", 75"), 1,000:1 (65"), 1,100 (55", 49")	1,300:1	1,400:1				
	Dynamic CR	500,000:1 (Typ)	4,000,000:1 (86", 75" DTV Label only), 2,000,000:1 (75UM3C DTV Label only) 1,000,000:1	500,000:1	500,000:1				
Viewing Angle (H x V)	178 x 178	178 x 178	178 x 178	178 x 178					
Guaranteed Operating Hour	24 hrs / 7 days	24 hrs / 7 days	24 hrs / 7 days	24 hrs / 7 days					
Connectivity	Input	HDMI(3), DP, OPS, DVI-D, USB 2.0, USB 3.0, SD Card	HDMI, DP, DVI-D, Audio, USB 3.0, SD Card	HDMI(3), DP, DVI-D, Audio, USB 3.0, USB2.0(2)	HDMI(3), DP, DVI-D, Audio, USB 3.0(1), USB 2.0(1)				
	Output	Analog Audio	DP, Audio	DP, Audio, External Speaker	DP, Audio, External Speaker				
	External Control	RS232C, RJ45, IR+B Receiver, Pixel Sensor	RS232C, RJ45, IR Receiver, Pixel Sensor	RS232C, RJ45, IR Receiver	RS232C, RJ45, IR Receiver				
Physical Specification	Bezel Width	4.4 mm (L/R), 5.9 mm (T/B)	86": 14.3 mm, 75": 14.9 mm, 65": 12.1 mm (T), 12.6 mm (R/L), 15.7 mm (B), 49": 11.9 mm (T), 1 2.4 mm (R/L), 15.5 mm (B)	14.9 mm (Even bezel)	27.9 mm (Even bezel)				
	Monitor Dimension (W x H x D)	2,158.3 x 348.5 x 81.7 mm	86": 1,926.2 x 1,097.2 x 60.6 mm, 75": 1,682.4 x 960.3 x 57.9 mm, 65": 1,458.6 x 836.4 x 40.1 mm, 55": 1,239.8 x 713.2 x 38.6 mm, 49": 1,103.2 x 636 x 38.6 mm	2,191.8 x 1,246.8 x 69.4 mm	1,923 x 1,109 x 51 mm				
	Weight (head)	20.5 kg	86": 49 kg, 75": 41.5 kg, 65": 26 kg, 55": 16.6 kg, 49": 13.3 kg	88 kg	72.9 kg				
	Carton Dimensions (W x H x D)	2,290 x 599 x 228 mm	86": 2,073 x 1,260 x 292 mm, 75": 1,816 x 1,123 x 228 mm, 65": 1,561 x 971 x 190 mm, 55": 1,330 x 807 x 170 mm, 49": 1,197 x 760 x 166 mm	2,342 x 1,386 x 402 mm	2,034 x 1,213 x 314 mm				
	Packed Weight	38.2 kg	86": 61.1 kg, 75": 49 kg, 65": 32.5 kg, 55": 21.1 kg, 49": 17.7 kg	123 kg	86.7 kg				
	VESA™ Standard Mount Interface	600 x 200 mm	86", 75": 600 x 400 mm, 65", 55", 49": 300 x 300 mm	800 x 400 mm	600 x 400 mm				
	Environment	Operation Temperature Range 0°C to 40°C Operation Humidity Range 10% to 80%	0°C to 40°C 10% to 80%	0°C to 40°C 10% to 80%	0°C to 40°C 10% to 80%				
Power	Power Supply	100-240V~, 50/60Hz	100-240V~, 50/60Hz	100-240V~, 50/60Hz	100-240V~, 50/60Hz				
	Power Consumption Typical Smart Energy Saving	BH7C: 215W, BH5C: 180W 30% of typical	UH5C: Under 275W / 240W / 134W / 116W / 102W, 75UM3C: 160W UH5C: Under 200W / 170W / 90W / 80W / 70W, 75UM3C: 115W	450W 315W	450W 300W				
Standard (Certification)	Safety	UL / cUL / CB / TUV / KC	UL/cUL/CB/TUV/KC	UL/cUL/CB/TUV/KC	UL / cUL / CB scheme / TUV				
	EMC	FCC Class "A" / CE / KC	FCC Class "A"/CE/KCC	FCC Class "A"/CE/KCC	FCC Class "A" / VCCI / C-tick / CE / KCC				
	ErP / Energy Star	NA / NA	NA/NA (86", 75"), NA/Yes (Energy Star 7.0) (under 65")	No	NA/No				
Media Player Compatibility	OPS Type Compatible	Yes	Yes	No/No	No				
	External Media Player Attachable	No	Yes (MP500/MP700)	Yes (MP500/MP700)	No				
Software Compatibility	SuperSign Lite/W	Yes	Yes	Yes	Yes				
	SuperSign C	Yes	Yes	Yes	Yes				
Accessories	Basic	Remote Controller (including battery 2 ea), Power Cord, DP (2.6 M), RS-232C Cable (3 M), Owner's Manual (Website upload)	Remote Controller (include battery 2 ea), Power Cord, QSG, DP Cable (86", 75" only), HDMI Cable (under 65" only), Regulation Book, Phone to RS232C Gender, Memory cover	Remote Controller (include battery 2 ea), Power Cord, IR/Light sensor receiver, CD (Owner's Manual, SuperSign Program / Manual), HDMI 2.0 Cable, DP cable, Phone jack to BNC cable, RS-232C, WIFI Dongle, EYE-BOLT	Power Cord, Remote Controller (include battery 2 ea), CD (Manual/Elite-C/ESG), Eye Bolt (2 ea), HDMI Cable				
	Optional	AN-WF500 (Wi-Fi USB Dongle), MP700, KT-OPSA (OPS KIT), KT-SPO (RGB Sensor), Ultra Stretch Pillar (PL-S/D/F860) ** Stand is not available	86", 75": Pixel sensor (KT-SPO), Media player, OPS Kit (KT-OPSA), HD Base T (EB-B100), LSW640A/B (Wall Mount) Speaker (SP-5200), Stand (65" ST-651T, 55", 49" ST-201T), Pixel sensor (KT-SPO), Media player, Wall bracket (LSW350B), VESA Adapter (AM-B330S), OPS Kit (KT-OPSA), HD Base T (EB-B100)	SP-2200 (External Speaker)	SP-2100 (External Speaker)				

SPECIFICATIONS

VIDEO-WALL					VIDEO-WALL					STANDARD							
		VH7B/VM5B	VH7C/VM5C	49VL5B	LV77A/75A			LV35A	LS75C/LS73C	SM5C/SM5KC	SM3C			LV35A	LS75C/LS73C	SM5C/SM5KC	SM3C
Panel	Screen Size	55"	49"	49"	55"	Panel	Screen Size	55" / 47"	55" / 49" / 42"	65" / 55" / 49" / 43" / 32"	55" / 49" / 43"	Physical Specification	Bezel Width	55": 2.25 mm (L/T) / 1.25 mm (R/B) 47": 3.2 mm (L/T) / 1.7 mm (R/B)	7.4 mm (Even bezel)	11.9 mm (T/R/L), 18 mm (B) (32": 1.3 mm (T/R/L), 18 mm (B))	11.9 mm (T/R/L), 18 mm (B)
	Panel Technology	IPS	IPS	IPS	IPS		Panel Technology	IPS	IPS	IPS	IPS						
	Aspect Ratio	16:9	16:9	16:9	16:9		Aspect Ratio	16:9	16:9	16:9	16:9						
	Native Resolution	1,920 x 1,080 (FHD)	1,920 x 1,080 (FHD)	1,920 x 1,080 (FHD)	1,920 x 1,080 (FHD)		Native Resolution	1,920 x 1,080 (FHD)	1,920 x 1,080 (FHD)	1,920 x 1,080 (FHD)	1,920 x 1,080 (FHD)						
	Brightness	VH7B: 700 cd/m ² VM5B: 500 cd/m ²	VH7C: 700cd/m ² VM5C: 500 cd/m ²	450 cd/m ²	LV77A: 700 cd/m ² , LV75A: 500cd/m ²		Brightness	55": 500 cd/m ² , 49": 450 cd/m ²	LS75C: 700 cd/m ² LS73C: 500 cd/m ²	450 cd/m ² (32": 400 cd/m ²)	350 cd/m ²						
	Contrast Ratio	1,400:1	1,300:1	1,300:1	1,400:1		Contrast Ratio	55": 1,400:1, 49": 1,200:1	1,300:1	1,100:1 (65": 1,300:1)	1,100:1						
	Dynamic CR	500,000:1	500,000:1	500,000:1	500,000:1		Dynamic CR	500,000:1	500,000:1	4,000,000:1 (32": 2,000,000:1)	2,000,000:1						
	Viewing Angle (H x V)	178 x 178	178 x 178	178 x 178	178 x 178		Viewing Angle (H x V)	178 x 178	178 x 178	178 x 178	178 x 178						
	Guaranteed Operating Hour	24 hrs / 7 days	24 hrs / 7 days	24 hrs / 7 days	24 hrs / 7 days		Guaranteed Operating Hour	24 hrs / 7 days	24 hrs / 7 days	24 hrs / 7 days	18 hrs / 7 days						
	Connectivity	Input	HDMI, DP, DVI-D, OPS, Audio, USB3.0, USB 2.0, RGB	HDMI, DP, DVI-D, OPS, Audio, USB3.0, USB 2.0, RGB	HDMI, DVI-D, RGB, USB		HDMI, DP, DVI-D, Audio, USB	Connectivity	Input	HDMI, DVI-D, Audio, USB	HDMI (2), DP, DVI-D, Audio, OPS		HDMI, DP, DVI-D, RGB, Audio, USB 3.0, SD Card	HDMI, DP, DVI-D, RGB, Audio in			
Output		DP, Audio	DP, Audio	DVI-D	DP, External Speaker, Audio	Output	DVI-D, External Speaker, Audio		DP, Audio, External Speaker	DP, Audio, External Speaker	DP, Audio, External Speaker out						
External Control		RS232C, RJ45, IR Receiver	RS232C, RJ45, IR Receiver	RS232C, RJ45, IR Receiver	RS232C, RJ45, IR Receiver	External Control	RS232C, RJ45, IR Receiver		RS232C, RJ45, IR/Light sensor, Pixel sensor, USB 3.0	RS232C in/out, RJ in, IR Receiver, Pixel sensor	RS232C, RJ45, IR receiver, Pixel Sensor, USB 3.0, SD card						
Physical Specification	Bezel Width	0.9 mm (Even bezel) / B to B: 1.8 mm * B to B: Panel Bezel + Panel Bezel	0.9 mm (Even bezel) / B to B: 1.8 mm * B to B: Panel Bezel + Panel Bezel	2.3 mm (L/T), 1.2 mm (R/B)	2.25 mm (L/T), 1.25 mm (R/B)	Environment	Operation Temperature Range	0°C to 40°C	0°C to 40°C	0°C to 40°C	0°C to 40°C						
	Monitor Dimension (W x H x D)	1,211.4 x 682.2 x 86.5 mm	1,075.6 x 605.8 x 86.2 mm	1,077.7 x 607.8 x 89.7 mm	1,213.4 x 684.2 x 88.5 mm		Operation Humidity Range	10% to 80%	10% to 80%	10% to 80%	10% to 80%						
	Weight (head)	18.6 kg	17.5 kg	17.8 kg	LV77A: 23.2 kg / LV75A: 23 kg		Power Supply	100-240V~, 50/60Hz	100-240V~, 50/60Hz	100-240V~, 50/60Hz	100-240V~, 50/60Hz						
	Carton Dimensions (W x H x D)	1,353 x 855 x 263 mm	1,214 x 775 x 263 mm	1,214 x 778 x 263 mm	1,337 x 828 x 239 mm		Power Consumption	Typical: 220W / 150W Smart Energy Saving: 110W / 80W	TBD / 120W 40W	LV77A: 230W / LV75A: 160W LV75A: 130W / LV75A: 130W	55": 120W, 55": 100W, 49": 85W, 43": 75W, 32": 60W						
	Packed Weight	25.3 kg	23.2 kg	22.8 kg	LV77A: 30.5 kg / LV A: 30.3 kg		Power Consumption	Typical: 110W / 80W Smart Energy Saving: 55": 90W / 47": 85W	TBD / 70W 40W	LV77A: 130W / LV75A: 130W	55": 160W / 47": 130W 55": 100W / 49": 90W / 42": 80W						
	VESA™ Standard Mount Interface	600 x 400 mm	600 x 400 mm	600 x 400 mm	600 x 400 mm		Standard (Certification)	Safety	UL / cUL / CB / TUV / KC	UL / cUL / CB / TUV / KC	UL / cUL / CB / TUV / KC	UL / cUL / CB / TUV / KC					
Environment	Operation Temperature Range	0°C to 40°C	0°C to 40°C	0°C to 40°C	0°C to 40°C	Power	Power Supply	100-240V~, 50/60Hz	100-240V~, 50/60Hz	100-240V~, 50/60Hz	100-240V~, 50/60Hz						
	Operation Humidity Range	10% to 80%	10% to 80%	10% to 80%	10% to 80%		Power Consumption	Typical: 220W / 150W Smart Energy Saving: 110W / 80W	TBD / 120W 40W	LV77A: 230W / LV75A: 160W LV75A: 130W / LV75A: 130W	55": 120W, 55": 100W, 49": 85W, 43": 75W, 32": 60W						
Power	Power Supply	100-240V~, 50/60Hz	100-240V~, 50/60Hz	100-240V~, 50/60Hz	100-240V~, 50/60Hz	Standard (Certification)	EMC	FCC Class "A" / CE / KCC	FCC Class "A" / CE / KCC	FCC Class "A" / CE / KCC	FCC Class "A" / CE / KCC						
	Power Consumption	Typical: 220W / 150W Smart Energy Saving: 110W / 80W	TBD / 120W 40W	90W 40W	LV77A: 230W / LV75A: 160W LV75A: 130W / LV75A: 130W		ErP / Energy Star	NA / Yes (Energy Star 7.0)	NA / Yes (Energy Star 7.0)	NA / No	LV77A: NA/No LV75A: NA/Yes (Energy Star 7.0)						
Standard (Certification)	Safety	UL / cUL / CB / TUV / KC	UL / cUL / CB / TUV / KC	UL / cUL / CB / TUV / KC	UL / cUL / CB / TUV / KC	Media Player Compatibility	OPS Type Compatible	No	Yes	Yes	Yes						
	EMC	FCC Class "A" / CE / KCC	FCC Class "A" / CE / KCC	FCC Class "A" / CE / KCC	FCC Class "B" / CE / KCC		External Media Player Attachable	Yes (MP500/MP700)	Yes (MP500/MP700)	Yes	Yes						
	ErP / Energy Star	NA / Yes (Energy Star 7.0)	NA / Yes (Energy Star 7.0)	NA / No	LV77A: NA/No LV75A: NA/Yes (Energy Star 7.0)		Software Compatibility	SuperSign Lite/W	Yes	Yes	Yes	Yes					
Media Player Compatibility	OPS Type Compatible	Yes	Yes	No	No	Accessories	Basic	Remote controller, Power cable, DP cable, Manual, IR receiver, RS-232C cable, LAN cable, Guide bracket, Screws	Remote controller, Power cable, DP cable, Manual, IR receiver, RS-232C cable, LAN cable, Guide bracket, Screws	Remote Control, Power Cable, DVI Cable, Manual, IR Receiver, RS-232C Cable, Guide Bracket, Screw	Remote Controller, Power Cable, DP Cable, Manual, IR Receiver, RS-232C Cable, Tiling Guide, Screw						
	External Media Player Attachable	Yes (MP500/MP700)	Yes (MP500/MP700)	Yes	Yes		Optional	Wall mount (Landscape: WM-L640V, Portrait: WM-P640V), OPS kit (KT-OPSA), HDBaseT (EB-B100)	Wall mount (Landscape: WM-L640V, Portrait: WM-P640V), OPS kit (KT-OPSA), HDBaseT (EB-B100)	Wall Mount (Landscape: WM-L640V, Portrait: WM-P640V)	WM-L640V (Landscape), WM-P640V (Portrait), Frame Kit (Horizontal: FK-55V10, Vertical: FK-55V20)						
Software Compatibility	SuperSign Lite/W	Yes	Yes	Yes	Yes	Accessories	Basic	Remote controller, Power cable, DP cable, Manual, IR receiver, RS-232C cable, LAN cable, Guide bracket, Screws	Remote controller, Power cable, DP cable, Manual, IR receiver, RS-232C cable, LAN cable, Guide bracket, Screws	Remote Control, Power Cable, DVI Cable, Manual, IR Receiver, RS-232C Cable, Guide Bracket, Screw	Remote Controller, Power Cable, DP Cable, Manual, IR Receiver, RS-232C Cable, Tiling Guide, Screw						
	SuperSign C	Yes	Yes	Yes	Yes		Optional	Wall mount (Landscape: WM-L640V, Portrait: WM-P640V), OPS kit (KT-OPSA), HDBaseT (EB-B100)	Wall mount (Landscape: WM-L640V, Portrait: WM-P640V), OPS kit (KT-OPSA), HDBaseT (EB-B100)	Wall Mount (Landscape: WM-L640V, Portrait: WM-P640V)	WM-L640V (Landscape), WM-P640V (Portrait), Frame Kit (Horizontal: FK-55V10, Vertical: FK-55V20)						

SPECIFICATIONS

STANDARD					STANDARD					HIGH BRIGHTNESS				
		22SM3B	SH7DB	SL5B	SE3C			SE3B/SE3KB	XE3C	XS2C	XF3C			
Panel	Screen Size	21.5"	55" / 49" / 42"	55" / 49" / 43" / 32"	55" / 49" / 43"	Panel	Screen Size	65" / 55" / 49" / 43" / 32"	75" / 55"	75" / 55"	75" / 55" / 49"			
	Panel Technology	IPS	IPS	IPS	IPS		Panel Technology	IPS	IPS	IPS	IPS	M+ (WRGB)		
	Aspect Ratio	16:9	16:9	16:9	16:9		Aspect Ratio	16:9	16:9	16:9	16:9	16:9		
	Native Resolution	1,920 x 1,080 (FHD)	1,920 x 1,080 (FHD)	1,920 x 1,080 (FHD)	1,920 x 1,080 (FHD)		Native Resolution	1,920 x 1,080 (FHD)	75": 3,840 x 2,160 (UHD), M+ 55": 1,920 x 1,080 (FHD), M+	75": 3,840 x 2,160 (UHD), M+ 55": 1,920 x 1,080 (FHD), M+	75": 3,840 x 2,160 (UHD), M+ 55": 1,920 x 1,080 (FHD), M+	75": 3,840 x 2,160 (UHD) 55": 1,920 x 1,080 (FHD)		
	Brightness	250 cd/m ²	700 cd/m ²	450 cd/m ²	300 cd/m ²		Brightness	350 cd/m ² (65": 400 cd/m ²)	3,000 cd/m ²	3,000 cd/m ²	2,500 cd/m ²	3,000 cd/m ²		
	Contrast Ratio	1,000:1	1,300:1	1,100:1 (32": 1,300:1)	1,100:1		Contrast Ratio	1,100:1 (65": 1,300:1)	1200:1 (75"), 1,000:1 (55", 49")	1200:1 (75"), 1,000:1 (55")	1200:1 (75"), 1,000:1 (55")	1200:1 (75"), 1,000:1 (55", 49")		
	Dynamic CR	4,000,000:1	500,000:1	500,000:1	500,000:1		Dynamic CR	500,000:1	500,000:1	500,000:1	500,000:1	500,000:1		
	Viewing Angle (H x V)	178 x 178	178 x 178	178 x 178	178 x 178		Viewing Angle (H x V)	178 x 178	178 x 178	178 x 178	178 x 178	178 x 178		
	Guaranteed Operating Hour	16 hrs / 7 days	24 hrs / 7 days	18 hrs / 7 days (32": 24 hrs)	16 hrs / 7 days		Guaranteed Operating Hour	18 hrs / 7 days	24 hrs / 7 days	24 hrs / 7 days	24 hrs / 7 days	24 hrs / 7 days		
Connectivity	Input	HDMI, RGB, Audio, USB 3.0	HDMI, DP, DVI-D, RGB, Audio, USB	HDMI, DP(32"), DVI, RGB, Audio, USB(2)	HDMI, RGB, Audio, USB	Connectivity	Input	HDMI, DVI, RGB, Audio, USB(2)	HDMI, DP, DVI-D, Audio	HDMI (2), DP, DVI-D, Audio, USB	HDMI(2), DP, DVI-D, Audio, USB3.0			
	Output	-	DP, Audio, External Speaker	RS232C, RJ45, IR Receiver	External Speaker Out		Output	Audio, External Speaker out (SE3B only)	DP, External Speaker Out	DP, External Speaker Out	DP, External Speaker Out			
	External Control	RS232C In, IR Receiver, Pixel Sensor, RJ45	RS232C RJ45, IR Receiver, Pixel Sensor (Optional)	Audio, External Speaker Out	RS232C, RJ45, IR receiver		External Control	RS232C, RJ45, IR receiver	RS232C, RJ45, USB 3.0, SD Card	RS232C, RJ45, IR Receiver, Pixel Sensor	RS232C, RJ45, IR Receiver, Pixel Sensor			
Physical Specification	Bezel Width	16.3 mm	7.4 mm	11.9 mm (T/R/L), 18 mm (B) 32": 18.9 mm (T/R/L), 26 mm (B)	11.9 mm (T/R/L), 18 mm (B)	Physical Specification	Bezel Width	11.9 mm (T/R/L), 18 mm (B) (32": 13 mm (T/R/L), 18 mm (B))	75": 110 mm (T) 230 mm (B), 73.3 mm (L/R) (TBD) 55": 66.4 mm (T/B), 31.0 mm (L/R)	75": 12.8 mm 55": 9.9 mm (L/R), 12 mm (T/B)	75": 12.8 mm (Even bezel) 55": 9.9 mm (L/R), 12 mm (T/B) 49": 6.5 mm (L/R), 9 mm (T/B)			
	Monitor Dimension (W x H x D)	510.3 x 302.1 x 53.8 mm	55": 1,230 x 714 x 32 mm 49": 1,095 x 637 x 32 mm 42": 949 x 555 x 32 mm	55": 1,238 x 714.9 x 38.6 mm 49": 1,102.2 x 638.5 x 38.6 mm 43": 969.6 x 563.9 x 38.6 mm 32": 740.4 x 442 x 35.6 mm	55": 1,238 x 714.9 x 38.6 mm 49": 1,102.2 x 638.5 x 38.6 mm 43": 969.6 x 563.9 x 38.6 mm		Monitor Dimension (W x H x D)	65": 1,456.9 x 838 x 41.1 mm (SE3KB: D 56.5 mm), 55": 1,238 x 714.9 x 38.6 mm (SE3KB: D 54 mm), 49": 1,102.2 x 638.5 x 38.6 mm (SE3KB: D 54 mm), 43": 969.6 x 563.9 x 38.6 mm (SE3KB: D 54 mm), 32": 729.4 x 428.9 x 55.5 mm (SE3KB: D 55.5 mm)	75": 1075.6 x 1991.6 x 219 mm (TBD) 55": 745.3 x 1345.4 x 160.0 mm	75": 1,675.2 x 953.6 x 116 mm 55": 1,238.4 x 709.4 x 85.4 mm	75": 1,675.2 x 953.6 x 123.9 mm 55": 1,235.4 x 709.4 x 106 mm 49": 1,092.7 x 626.4 x 105 mm			
	Weight (head)	3.6 kg	55": 20.7 kg 49": 15.6 kg 42": 12.5 kg	55": 17.3 kg, 49": 14.1 kg, 43": 9.8 kg, 32": 8 kg	55": 17.1 kg, 49": 13.9 kg, 43": 9.6 kg		Weight (head)	[SE3B] 65": 27.7 kg, 55": 17.3 kg, 49": 14.1 kg, 43": 9.8 kg, 32": 5.2 kg [SE3KB] 65": 27.9 kg, 55": 17.5 kg, 49": 14.3 kg, 43": 10 kg, 32": 5.4 kg	75": 180 kg (TBD) 55": 70 kg	75": 43 kg 55": 26.7 kg	75": 36.7 kg 55": 28.5 kg 49": 22 kg			
	Carton Dimensions (W x H x D)	565 x 357 x 103 mm	55": 1,330 x 815 x 174 mm 49": 1,197 x 760 x 134 mm 42": 1,045 x 645 x 127 mm	55": 1,330 x 807 x 170 mm 49": 1,197 x 760 x 166 mm 43": 1,052 x 650 x 123 mm 32": 850 x 585 x 121 mm	55": 1,330 x 807 x 170 mm 49": 1,197 x 760 x 166 mm 43": 1,052 x 650 x 123 mm		Carton Dimensions (W x H x D)	65": 1,561 x 977 x 190 mm 55": 1,330 x 807 x 170 mm 49": 1,197 x 760 x 166 mm 43": 1,052 x 650 x 123 mm 32": 810 x 510 x 132 mm	75": 1,292 x 2296 x 468 mm (TBD) 55": 1,027 x 1,491 x 309 mm	75": 1,816 x 1,106 x 285 mm 55": 1,344 x 820 x 215 mm	75": 1,816 x 1,106 x 285 mm 55": 1,344 x 820 x 236 mm 49": 1,195 x 760 x 196 mm			
	Packed Weight	4.7 kg	55": 25.2 kg 49": 18.7 kg 42": 14.8 kg	55": 21.5 kg, 49": 17.2 kg, 43": 12.4 kg, 32": 9.9 kg	55": 21.3kg, 49": 17 kg, 43": 12.2 kg		Packed Weight	[SE3B] 65": 33.6 kg, 55": 21.5 kg, 49": 17.2 kg, 43": 12.4 kg, 32": 6.5 kg [SE3KB] 65": 33.8 kg, 55": 21.7 kg, 49": 17.4 kg, 43": 12.6 kg, 32": 6.7 kg		75": 52.2 kg 55": 31.9 kg	75": 46.3 kg 55": 33.7 kg 49": 26.7 kg			
	VESA™ Standard Mount Interface	100 x 100 mm	400 x 400 mm	300 x 300 mm (43", 32": 200 x 200 mm)	300 x 300 mm (43": 200 x 200 mm)		VESA™ Standard Mount Interface	300 x 300 mm (43", 32": 200 x 200 mm)	NA	600 x 400 mm	75": NA / 55", 49": 600 x 400 mm			
Environment	Operation Temperature Range	0°C to 40°C	0°C to 40°C	0°C to 40°C	0°C to 40°C	Environment	Operation Temperature Range	0°C to 40°C	-30 °C to 50 °C	75": 0°C - 40°C (w/o Direct Sunlight), 0°C - 30°C (Direct Sunlight) 55": 0°C - 45°C (w/o Direct Sunlight), 0°C - 35°C (Direct Sunlight)	0°C to 50 °C (w/o Direct Sunlight), 0 °C to 40 °C (Direct Sunlight)			
	Operation Humidity Range	10% to 80%	10% to 80%	10% to 80%	10% to 80%		Operation Humidity Range	10% to 80%	5% to 100%	10% to 80%	75": 10% to 85% 55", 49": 10% to 80%			
Power	Power Supply	100-240V~, 50/60Hz	100-240V~, 50/60Hz	100-240V~, 50/60Hz	100-240V~, 50/60Hz	Power	Power Supply	100-240V~, 50/60Hz	100-240V~, 50/60Hz	100-240V~, 50/60Hz	100-240V~, 50/60Hz			
	Power Consumption	Typical: 35W Smart Energy Saving: On 25.13W / Off 29.76W	55": 140W, 49": 125W, 42": 110W 55": 95W, 49": 80W, 42": 60W	55": 85W, 49": 75W, 43": 65W, 32": 65W 55": 65W, 49": 55W, 43": 50W, 32": 42W	55": 80W, 49": 65W, 43": 55W 55": 55W, 49": 50W, 43": 45W		Power Consumption	Typical: 65": 95W, 55": 70W, 49": 65W, 43": 60W, 32": 50W Smart Energy Saving: 65": 70W, 55": 55W, 49": 50W, 43": 45W, 32": 35W	75": 900W (TBD) 55": 350W 75": 500W (TBD) 55": 178W	75": 650W, 55": 240W 75": 280W, 55": 140W	75": 750W, 55": 280W, 49": 190W 75": 320W, 55": 160W, 49": 85W			
Standard (Certification)	Safety	UL / cUL / CB / TUV	UL / cUL / CB / TUV / KC	UL / cUL / CB / TUV / KC	UL / cUL / CB / TUV / KC	Standard (Certification)	Safety	UL / cUL / CB / TUV / KC	UL / cUL / CB	RU / CB scheme	RU / CB scheme			
	EMC	FCC Class "B" / CE	FCC Class "A" / CE / KCC	FCC Class "A" / CE / KCC	FCC Class "A" / CE / KCC		EMC	FCC Class "A" / CE / KCC	FCC Class "A" / CE / KCC	FCC Class "A" / CE / KCC	FCC Class "A" / CE / KCC			
	ErP / Energy Star	NA / No	NA / No	NA / Yes (Energy Star 7.0)	NA / Yes (Energy Star 7.0)		ErP / Energy Star	NA / Yes (Energy Star 7.0), (32": NA / NA)	No / No	No / No	No / No			
Media Player Compatibility	OPS Type Compatible	No	Yes	No (32": Yes)	No	Media Player Compatibility	OPS Type Compatible	No	No	No	No			
	External Media Player Attachable	No	Yes (MP500/MP700)	Yes (MP500/MP700), (32": No)	Yes (MP500/MP700)		External Media Player Attachable	Yes (MP500/MP700), (32": No)	No	No	No			
Software Compatibility	SuperSign Lite/W	Yes	Yes	Yes	Yes	Software Compatibility	SuperSign Lite/W	Yes	Yes	Yes	Yes			
	SuperSign C	Yes	Yes	Yes	Yes		SuperSign C	Yes	Yes	Yes	Yes			
Accessories	Basic	Remote Controller (include 2ea batteries), Power Cord, QSG, RGB Cable, Phone to RS232C Gender, IR Receiver	Remote Controller(include battery 2ea), Power Cord, QSG, RGB Cable, Regulation Book, Phone to RS232C Gender, IR Receiver	Remote Controller(include battery 2ea), Power Cord, QSG, RGB Cable, Regulation Book, Phone to RS232C Gender, IR Receiver	Remote Controller(include battery 2ea), Power Cord, QSG, RGB Cable, Regulation Book, IR Receiver	Accessories	Basic	Remote Controller (include battery 2 ea), Power Cord, QSG, RGB Cable, Regulation Book, Phone to RS232C Gender, IR Receiver	Remote Controller, Manual, QSG, Regulation Book, Phone to RS232C Gender, USB cable, HDMI cable	Remote Controller (2 batteries included), Power Cord, HDMI Cable, Manual (ESG&EIG)	Remote Controller (including battery 2 ea), Power Cord, HDMI Cable, IR extension cable/ PCB, Manual (ESG&EIG), IR BRKT (75" only)			
	Optional	Pixel Sensor (KT-SPO)	SP-2100 (External Speaker), ST-200T, LSW440S, AN-WF500 (WiFi USB Dongle), KT-OPSA (OPS Kits), KT-SPO (Pixel Sensor)	Speaker (SP-5000/ 32": SP-2100), Stand (55", 49": ST-492T/ 43": ST-432T/ 32": ST-320T), Media Player, Wall Bracket (55", 49": LSW350B/ 43": LSW230B/ 32": LSW220), VESA Adapter (55", 49": AM-B330S/ 43": AM-B220S), Touch overlay (except 32"), OPS Kit (32" only)	Speaker (SP-5000), Stand (55", 49": ST-492T/ 43": ST-432T), Media Player, Wall Bracket (55", 49": LSW350B/ 43": LSW230B), VESA Adapter (55", 49": AM-B330S/ 43": AM-B220S), Wi-Fi dongle (AN-WF500), Touch overlay (55": KT-T550/ 49": KT-T490/ 43": KT-T430)		Optional	Speaker (SP-5000)(SE3B only), Stand (65": ST-652T/ 55", 49": ST-492T/ 43": ST-432T/ 32": ST-322T), Media Player (except 32"), Wall Bracket (65", 55", 49": LSW350B/ 43": LSW230B/ 32": LSW230B), VESA Adapter (65", 55", 49": AM-B330S/ 43": AM-B220S)(except 32"), Touch overlay (65": KT-T651/ 55": KT-T550/ 49": KT-T490/ 43": KT-T430/ 32": KT-T320)	Media player (driven by customer), Enclosure Stand	LSW630 (Wall Mount), WM-L640V (Landscape 55"), WM-P640V (Portrait 55"), KT-SPO, AN-WF500 *Stand is not available	KT-SPO, AN-WF500 (49" only) *Stand is not available			

SPECIFICATIONS

		HIGH BRIGHTNESS	TRANSPARENT		INTERACTIVE		MIRROR	
		XS1D	WEC(49/32")	LW55A	WFC/WFB	TR3B	SM3TB	MS75A-7BB
Panel	Screen Size	49"	49" / 32"	32"	55" / 49" / 32"	84"	10"	49"
	Panel Technology	IPS	IPS (M+)	IPS	IPS	IPS	ADS	IPS
	Aspect Ratio	16:9	16:9	16:9	16:9	16:9	16:10	16:9
	Native Resolution	1,920 x 1,080 (FHD), M+	1,920 x 1,080 (FHD)	1,920 x 1,080 (FHD)	1,920 x 1,080 (FHD)	3,840 x 2,160 (UHD)	1,280 x 800 (HD)	1,920 x 1,080 (FHD)
	Brightness	1,500 cd/m ²	100 cd/m ²	5.9% (Typ)	55": 10% (Typ), 49": 9.5% (Typ)	350 cd/m ² , (300 cd/m ² with Protection Glass)	Module: 450cd/m ² , Set: 400cd/m ² (W/Touch)	300cd/m ² (700cd/m ² without mirror glass)
	Contrast Ratio	1,100:1 (TBD)	NA	1,200 (Typ)	55": 1,000 (Typ), 49": 1,300	1,400:1	900:1	1,000:1
	Dynamic CR	500,000:1	NA	NA	NA	500,000:1	-	150,000:1
	Viewing Angle (H x V)	178 x 178	NA	178 x 178	178 x 178	178 x 178	160 x 160	178 x 178
	Guaranteed Operating Hour	24 hrs / 7 days	-	24 hrs / 7 days	24 hrs / 7 days	-	16 hrs / 7 days	24 hrs / 7 days
Connectivity	Input	HDMI(2), DP, DVI-D, Audio, USB3.0	HDMI (32" only), USB	LVDS(51Pin)	55/49": LVDS(40Pin) 32": LVDS(51Pin)	HDMI (2), DP, DVI-D, Comonnet AV, Audio, USB3.0 (1), USB2.0 (2)	USB2.0, SD Card	HDMI (2), DP, DVI, Audio, USB2.0
	Output	DP, Audio, External Speaker Out	Audio (32" only)	-	-	Audio, External Speaker out,	-	RS232C, RJ45, IR/Light sensor, Pixel sensor
	External Control	RS232C, RJ45, IR/Light sensor, Pixel Sensor	RS232C (32" only), RJ45 (32" only), IR Receiver (32" only)	-	-	RS232C, LAN, IR/Light Sensor, Penray Control	RJ45	DP, External Speaker out
Physical Specification	Bezel Width	7.4 mm (even bezel)	49": 184.6 mm (T), 223.6 mm (B), 60 mm (R/L) 32": 124.8 mm (T), 123.3 mm (B), 117.3 mm (R/L)	83.05 mm (T), 17.5 mm (B/L/R)	55": 35.75 mm (T), 66.55 mm (B), 18.7 mm (L), 98.8 mm (R) 49": 64.1 mm (T), 18.7 mm (B), 18.7 mm (L), 125.86 mm (R) 32": 83.05 mm (T), 17.5 mm (B/R/L)	34.0 mm	14 mm	8.4 mm
	Monitor Dimension (W x H x D)	1,095 x 637 x 32 mm	[Cooler Dimension] 49": 730 x 1,861 x 773 mm 32": 636.7 x 1,045.5 x 651 mm	743.2 x 504.2 x 11.2 mm	55": 1,331.1 x 786.7 x 11.2 mm 49": 1,222.34 x 690.8 x 11.2 mm 32": 743.2 x 504.2 x 11.2 mm	1,951.2 x 1,137.2 x 111.9 mm	245.6 x 164.2 x 29.7 mm	1,095.0 x 625.2 x 37.3 mm
	Weight (head)	15.6 kg	[Net Weight] 49": 114 kg 32": 80 kg (TBD)	2.6 kg	55": 5.4 kg 49": 6.6 kg 32": 2.6 kg	104 kg	0.63 kg	22.0 kg
	Carton Dimensions (W x H x D)	1,197 x 760 x 134 mm	49": 765 x 2037.5 x 801 mm 32": 751 x 1,195 x 699 mm	834 x 570 x 114 mm	55": 1,421 x 877 x 118 mm 49": 1,303 x 771 x 118 mm 32": 834.0 x 570.0 x 114 mm	2,050 x 1,261 x 330 mm	327 x 224 x 95 mm	1,330 x 810 x 174 mm
	Packed Weight	18.7 kg	49": 162 kg 32": 90 kg (TBD)	3.8 kg	55": 1,421 x 877 x 118 mm 49": 1,303 x 771 x 118 mm 32": 834.0 x 570.0 x 114 mm	119.1 kg	1.041 kg	25.3 kg
	VESA™ Standard Mount Interface	400 x 400 mm	NA	NA	NA	VESA™ Standard Mount Interface	600 x 400 mm, M8	50 x 50 mm
Environment	Operation Temperature Range	0°C to 40°C	5°C to 35°C	0°C to 40°C	0°C to 40°C	0°C to 40°C	0°C to 40°C	0°C to 40°C
	Operation Humidity Range	10% to 80%	10% to 80%	10% to 80%	10% to 80%	10% to 80%	10% to 90%	10% to 80%
Power	Power Supply	100-240V~, 50/60Hz	220-240V~, 50Hz, 2.5A	-	-	100-240V~, 50/60Hz, 5.7A	100-240V~, 50/60Hz	100-240V~, 50/60Hz
	Power Consumption	Typical 125W (TBD)	49": 300W, 32": TBD	7.2 W(Typ.)(12V Input)	55": 5.52W 49": 5.4W 32": 6.3W	Typical 400W	10W	125W
	Smart Energy Saving	90W (TBD)	NA	-	-	Smart Energy Saving 30% ± 5%	-	95W
Standard (Certification)	Safety	UL / cUL / CB / TUV / KC	CE	-	-	UL / cUL / CB / TUV / KC	UL / cUL / TUV	UL / cUL / CB / TUV / KC
	EMC	FCC Class "A" / CE / KCC	CE	-	-	FCC Class "A" / CE / KCC	FCC Class "A" / CE	FCC Class "A" / CE / KCC
	ErP / Energy Star	No / No	49": NA, 32": TBD	-	-	NA	NA / Yes (Energy Star 6.0)	NA / No
Media Player Compatibility	OPS Type Compatible	Yes	NA	-	-	Yes (MP500, MP700)	No	No
	External Media Player Attachable	Yes (MP500/MP700)	NA	-	-	No	No	Yes (MP500/MP700), KT-OPSA
Software Compatibility	SuperSign Lite/W	Yes	Yes	-	-	SuperSign Lite/W	No	Yes
	SuperSign C	Yes	Yes	-	-	SuperSign C	No	Yes
Accessories	Basic	Remote Controller (including battery 2 ea), Power Cord, IR/Light sensor receiver, QSG, Regular Book (depend on regional standard), HDMI Cable	49": Remote Controller (including battery 2ea), WiFi Dongle, Anker Bolt (1 set), Rubber Pad (12 ea) 32": Remote Controller (including battery 2 ea), IR Receiver	CD Manual, Book Manual	Simple Book	Power Cord, Remote Controller (include battery 2 ea), IR/Light sensor receiver, USB 2.0 Cable, HDMI 2.0 Cable, DisplayPort Cable, Cable Tie (2 ea), Touch Pen (2 ea), PenTray (1 ea), Eye-Bolt Assy (2 ea), Screw Package, ESG	Adaptor, Manual (Web), ESG	Remote Controller (include battery 2 ea), Power Cord, IR/Light sensor receiver, CD (Owner's Manual), HDMI Cable
	Optional	SP-2100 (External Speaker), ST-200T, LSW440S, AN-WF500 (WiFi USB Dongle), KT-OPSA (OPS Kits), KT-SP0 (Pixel Sensor)	49": No, 32": AN-WF500	-	-	Media Player: MP700/MP500 External Speaker: SP-2100 Pen Tray: KT-WT1 (TBD)	No	SP-2100, ST-200T, LSW440S, AN-WF500 (WiFi USB Dongle), KT-OPSA (OPS Kits), KT-SP0

SPECIFICATIONS

SUPERSIGN TV

LW540S (ASIA/MEA)

Display	Screen Size	43"	49"	55"	
	Type	Direct LED		Edge LED	
	Resolution	1,920 x 1,080 (FHD)			
	Brightness	300 cd/m ²			
	Dynamic Contrast Ratio	1,000,000:1			
	Static Contrast Ratio	1,200:1			
	Viewing Angle Degree	178 / 178			
	Response Time (G to G)	9 ms			
	Frame Rate	60 Hz			
Broadcasting System	Analog	PAL/SECAM			
	Digital	DVB-T2/C (Varied by Countries) *Philippines : 6MHz available			
Video	Triple XD Engine	•			
	Real Cinema 24p (3:3 pull down)	•			
	Aspect Ratio	8 modes (16:9, Just Scan, Original, Full Wide, 4:3, 14:9, Zoom, Cinema Zoom 1)			
Audio	Audio Output / Speaker System	10W + 10W / 2.0 ch			
	Sound Mode	6 modes (Standard, News, Music, Cinema, Soccer, Game) *India only : 6 modes (Standard, News, Bollywood, Cinema, Cricket, Game)			
	Clear Voice	•			
General Features	Management	Diagnostics (USB)			
	Interactivity	HTNG / HDMI-CEC			
	Connectivity	MHL			
	RJP Interface	RS-232C, HDMI			
	RJP Compatibility	Teleadapt (RS-232C), Teleadapt / Guestlink (HDMI CEC)			
	Advanced Setting Option	Auto Off / Auto Sleep, Motion Eye Care, Energy Saving			
Anti-theft System	Kensington Lock				
Commercial Features	Hotel Mode, Lock Mode, IR Out, External Speaker Out, USB Auto Play Back, USB Cloning, One Channel Map, Multi IR Code, Welcome Screen/Video, Time Scheduler, SNMP, RTC, NTP, WiFi Dongle Ready				
Interface	Side	HDMI In, USB 2.0 (2), CI Slot			
	Rear	RF In, Component In, Digital Audio Out (Optical), RGB In, PC Audio Input (Sharing with Component In), RS-232C, HDMI In, LAN Port, Headphone Out, External Speaker Out			
Cabinet	Bezel Width (L/R, U, B) : on bezel based	12.1, 12.1, 15.1 mm		12.9, 12.9, 15.9 mm	
	Bezel Width (L/R, U, B) : off bezel based	9.8, 9.8, 12.8 mm		10.4, 10.4, 13.4 mm	
	Vesa	200 x 200 mm	300 x 300 mm		
	WxHxD / weight (w/o stand)	974 x 571 x 70.3 mm (SPK 79.4) / 9.2 kg	1,107 x 645 x 70.3 mm (SPK 79.4) / 12 kg	1,241 x 720 x 41.5 mm (SPK 63.0) / 16.3 kg	
	WxHxD / weight (with stand)	974 x 620 x 199 mm / 9.5 kg	1,107 x 702 x 216 mm / 12.1 kg	1,241 x 775 x 216 mm / 16.6 kg	
WxHxD / weight (carton)	1,060 x 660 x 152 mm / 11.7 kg	1,197 x 775 x 162 mm / 16.1 kg	1,360 x 835 x 152 mm / 21.3 kg		
power (Unit : Watts)	Voltage, HZ	100 - 240V, 50/60Hz			
	Max	88.4 W	97.0 W	122.3 W	
	Typical (Watts)	64.8 W	73.5 W	98.8 W	
	Energy Saving (Min)	55.4 W	59.0 W	73.7 W	
	Energy Saving (Med)	42.7 W	47.8 W	58.7 W	
	Energy Saving (Max)	31.4 W	35.1 W	45.6 W	
	Stand-by (Watts)	0.22 W	0.20 W	0.20 W	
Standard Approval	Safety	Varied by Countries			
	EMC	Varied by Countries			
	ETC	Varied by Countries			
Software Compatibility	SuperSign Lite (Free), SuperSign C (Free), SuperSign Simple Editor (Free), SuperSign W				

SUPERSIGN TV

LW540S (Colombia)

Display	Screen Size	32"	43"	49"	55"	
	Type	Direct LED			Edge LED	
	Resolution	1,366 x 768 (HD)	1,920 x 1,080 (FHD)			
	Brightness	300 cd/m ²				
	Dynamic Contrast Ratio	1,000,000:1				
	Static Contrast Ratio	1,200:1				
	Viewing Angle Degree	178 / 178				
	Response Time (G to G)	9 ms				
	Frame Rate	60 Hz				
Broadcasting System	Analog	NTSC				
	Digital	DVB-T2				
Video	Triple XD Engine	•				
	Dynamic Color Enhancer	•				
	Aspect Ratio	8 modes (16:9, Just Scan, Original, Full Wide, 4:3, 14:9, Zoom, Cinema Zoom 1)				
Audio	Audio Output / Speaker System	10W + 10W / 2.0 ch				
	Sound Mode	6 modes (Standard, News, Music, Cinema, Soccer, Game)				
	Sound Optimizer	3 modes (Normal, Wall-Mount Type, Stand Type)				
Clear Voice	•					
General Features	Management	Diagnostics (USB)				
	Interactivity	HTNG / HDMI-CEC				
	Connectivity	MHL				
	RJP Interface	RS-232C, HDMI				
	RJP Compatibility	Teleadapt (RS-232C), Teleadapt / Guestlink (HDMI CEC)				
	Advanced Setting Option	Auto Off / Auto Sleep, Motion Eye Care				
Anti-theft System	Kensington Lock					
Commercial Features	Welcome Screen/Video, Lock Mode, Multi-IR Code, Hotel Mode, USB Cloning, IR Out, SNMP, RTC (Real Time Clock), Internal Memory, Wi-Fi Dongle Ready, NTP (Network Time Protocol), External Speaker Out					
Interface	Side	HDMI In, USB 2.0 (2)				
	Rear	RF In, AV In (Sharing with Component In), Component In, Optical Audio Out, RGB In, External Speaker Out, PC Audio Input (Sharing with Component In), RS-232C, HDMI In, LAN Port				
Cabinet	Bezel Width (L/R, U, B) : on bezel based (mm)	14.1, 13.6, 19.1 mm	12.1, 12.1, 15.1 mm		12.9, 12.9, 15.9 mm	
	Bezel Width (L/R, U, B) : off bezel based (mm)	11.6, 11.1, 16.6 mm	9.8, 9.8, 12.8 mm		10.4, 10.4, 13.4 mm	
	Vesa (mm)	200 x 200 mm		300 x 300 mm		
	WxHxD / weight (w/o stand)	733 x 436 x 72.2 mm (SPK 76.3) / 4.9 kg	974 x 571 x 70.3 mm (SPK 79.4) / 9.2 kg	1,107 x 645 x 70.3 mm (SPK 79.4) / 12 kg	1,241 x 720 x 41.5 mm (SPK 63.0) / 16.3 kg	
	WxHxD / weight (with stand)	733 x 483 x 170 mm / 5.1 kg	974 x 620 x 199 mm / 9.5 kg	1,107 x 702 x 216 mm / 12.1 kg	1,241 x 775 x 216 mm / 16.6 kg	
WxHxD / weight (carton)	812 x 520 x 142 mm / 7.0 kg	1,060 x 660 x 152 mm / 11.7 kg	1,197 x 775 x 162 mm / 16.1 kg	1,360 x 835 x 152 mm / 21.3 kg		
power (Unit : Watts)	Voltage, Hz	100 - 240V, 50/60Hz				
	Typical	44.4 W	51.8 W	77.9 W	85.4 W	
	Stand-by	0.3 W ↓				
Standard Approval	ETC					
Software Compatibility	SuperSign Lite (Free), SuperSign C (Free), SuperSign Simple Editor (Free), SuperSign W					

SPECIFICATIONS

SUPERSIGN TV

LW540S (EU/CIS)

Display	Screen Size	43"	49"	55"	
	Type	Direct LED		Edge LED	
	Resolution	1,920 x 1,080 (FHD)			
	Brightness	300 cd/m ²			
	Dynamic Contrast Ratio	1,000,000:1			
	Static Contrast Ratio	1,200:1			
	Viewing Angle Degree	178 / 178			
	Response Time (G to G)	9 ms			
	Frame Rate	60 Hz			
Broadcasting System	Analog	PAL/SECAM			
	Digital	DVB-T2/C/S2			
Video	Triple XD Engine	•			
	Real Cinema 24p (3:3 pull down)	•			
	Aspect Ratio	8 modes (16:9, Just Scan, Original, Full Wide, 4:3, 14:9, Cinema Zoom 1, Zoom)			
Audio	Audio Output / Speaker System	10W + 10W / 2.0 ch			
	Sound Mode	6 modes (Standard, News, Music, Cinema, Sport, Game)			
	Clear Voice	•			
General Features	Management	Diagnostics (USB)			
	Interactivity	HTNG / HDMI-CEC			
	Connectivity	MHL			
	RJP Interface	RS-232C, HDMI			
	RJP Compatibility	Teleadapt (RS-232C), Teleadapt / Guestlink (HDMI CEC)			
	Advanced Setting Option	Auto Off / Auto Sleep, Motion Eye Care, Smart Energy Saving			
Commercial Features	Anti-theft System	Kensington Lock			
		Welcome Screen/Video, Lock Mode, Multi-IR Code, Hotel Mode, USB Cloning, IR Out, USB Auto Playback+, External Speaker Out, SNMP, RTC (Real Time Clock), Wi-Fi Dongle Ready, NTP (Network Time Protocol), One Channel Map, Time Scheduler			
Interface	Side	HDMI In, USB 2.0 (2), CI Slot			
	Rear	RF In (2), Video Component In, Audio Component In, Optical Audio Out, HDMI/HDCP Input, RGB In, PC Audio Input (Sharing with Component In), RS-232C, Headphone Out, LAN Port, External Speaker Out			
Cabinet	Bezel Width (L/R, U, B) : on bezel based (mm)	12.1, 12.1, 15.1 mm		12.9, 12.9, 15.9 mm	
	Bezel Width (L/R, U, B) : off bezel based (mm)	9.8, 9.8, 12.8 mm		10.4, 10.4, 13.4 mm	
	Vesa (mm)	200 x 200 mm	300 x 300 mm		
	WxHxD / weight (w/o stand)	974 x 571 x 70.3 mm (SPK 79.4) / 9.2 kg	1,107 x 645 x 70.3 mm (SPK 79.4) / 12 kg	1,241 x 720 x 41.5 mm (SPK 63.0) / 16.3 kg	
	WxHxD / weight (with stand)	974 x 620 x 199 mm / 9.5 kg	1,107 x 702 x 216 mm / 12.1 kg	1,241 x 775 x 216 mm / 16.6 kg	
	WxHxD / weight (carton)	1,060 x 660 x 152 mm / 11.7 kg	1,197 x 775 x 162 mm / 16.1 kg	1,360 x 835 x 152 mm / 21.3 kg	
power (Unit : Watts)	Voltage, HZ	100 - 240V, 50/60Hz			
	Max	82 W	99 W	116 W	
	Typical (Watts)	58 W	75 W	92 W	
	Energy Saving (Min)	47 W	60 W	73 W	
	Energy Saving (Med)	32 W	41 W	50 W	
	Energy Saving (Max)	18 W	22 W	27 W	
	Stand-by (Watts)	0.3 W ↓			
Standard Approval	Safety	CB, CU TR (For CIS)			
	Environment	CE			
	ETC	ROHS, ErP, Eco Flower (EU only)			
	Eco	Erp Class	A++		A+
		On Power Consumption	37W	44W	63W
		Luminance Ratio (%)	65		
		Mercury Content	0		
		Presence of Lead	Yes		
Average Annual Consumption (kWh)	54	64	92		
Software Compatibility	SuperSign Lite (Free), SuperSign C (Free), SuperSign Simple Editor (Free), SuperSign W				

SUPERSIGN TV

LW540S (NA)

Display	Screen Size	43"	49"	55"	
	Type	Direct LED		Edge LED	
	Resolution	1,920 x 1,080 (FHD)			
	Brightness	300 cd/m ²			
	Dynamic Contrast Ratio	1,000,000:1			
	Static Contrast Ratio	1,200:1			
	Viewing Angle Degree	178 / 178			
	Response Time (G to G)	9 ms			
	Frame Rate	60 Hz			
Broadcasting System	Analog	NTSC			
	Digital	ATSC / VSB / Clear QAM			
Video	Triple XD Engine	•			
	Dynamic Color Enhancer	•			
	Aspect Ratio	6 modes (16:9, Just Scan, Set By Program, 4:3, Zoom, Cinema Zoom1)			
Audio	Audio Output / Speaker System	10W + 10W / 2.0 ch			
	Sound Mode	6 modes (Standard, News, Music, Cinema, Sport, Game)			
	Sound Optimizer	3 modes (Normal, Wall-Mount Type, Stand Type)			
	Clear Voice	•			
General Features	Management	Self Diagnostics			
	Interactivity	HTNG / HDMI-CEC			
	RJP Interface	RS-232C, HDMI			
	RJP Compatibility	Teleadapt (RS-232C), Teleadapt / Guestlink (HDMI CEC)			
	USB Media	Moving Picture Playback (DivX HD), Picture (JPEG), Audio Codec (MP3, AC3, MPEG, AAC, HEAAC, CDDA, LPCM)			
	Advanced Setting Option	Auto Off / Auto Sleep, Motion Eye Care			
Commercial Features	Anti-theft System	Kensington Lock			
		Welcome Screen (Splash Image), Lock Mode, Multi-IR Code, Public Display Mode, USB Cloning, IR Out, USB Auto Playback+, External Speaker Out, SNMP, RTC (Real Time Clock), Internal Memory, Wi-Fi Dongle Ready, NTP (Network Time Protocol)			
Interface	Side	HDMI In, USB 2.0 (2)			
	Rear	RF In, AV In (Sharing with Component In), Component In, Optical Audio Out, RGB In, PC Audio Input (Sharing with Component In), RS-232C, HDMI In, LAN Port, External Speaker Out			
Accessory	L-Con, Power Cable, Simple Manual				
Cabinet	Bezel Width (L/R, U, B): on bezel based	12.1, 12.1, 15.1 mm		12.9, 12.9, 15.9 mm	
	Bezel Width (L/R, U, B): off bezel based	9.8, 9.8, 12.8 mm		10.4, 10.4, 13.4 mm	
	Vesa	200 x 200 mm	300 x 300 mm		
	WxHxD / weight (w/o stand)	38.4" x 22.5" x 2.8" (SPK3.1") / 20.3lb	43.6" x 25.4" x 2.8" (SPK3.1") / 26.5lb	48.9" x 28.4" x 1.6" (SPK2.5") / 35.9lb	
	WxHxD / weight (with stand)	38.4" x 24.4" x 7.8" / 20.8lb	43.6" x 27.7" x 8.5" / 26.7lb	48.9" x 30.5" x 8.5" / 35.6lb	
	WxHxD / weight (carton)	41.7" x 26.0" x 6.0" / 25.8lb	47.1" x 30.5" x 6.4" / 35.5lb	53.5" x 32.9" x 6.0" / 47.0lb	
power	Voltage, HZ	100 - 240V, 50/60Hz			
	Typical (Watts)	37.6 W	48.0 W	54.6 W	
	Stand-by (Watts)	0.5 W ↓			
Standard Approval	Safety	UL			
	Environment	FCC			
	Compliance	RoHS, cUL, NOM, Energy Star 7.0			
	Software Compatibility	SuperSign Lite, SuperSign C, SuperSign Simple Editor			
UPC	719192200265	719192200258	719192200241		

SPECIFICATIONS

SUPERSIGN TV

LW540S (SCA ISDB-T)

Display	Screen Size	43"	49"	55"	
	Type	Direct LED		Edge LED	
	Resolution	1,920 x 1,080 (FHD)			
	Brightness	300 cd/m ²			
	Dynamic Contrast Ratio	1,000,000:1			
	Static Contrast Ratio	1,200:1			
	Viewing Angle Degree	178 / 178			
	Response Time (G to G)	9 ms			
	Frame Rate	60 Hz			
	Broadcasting System	Analog	PAL-M/N, NTSC-M		
Digital		ISDB-T			
Video	Triple XD Engine	•			
	Dynamic Color Enhancer	•			
	Aspect Ratio	7 modes (16:9, Just Scan, Set by Program, 4:3, Zoom, Zoom2, Cinema Zoom1)			
Audio	Audio Output / Speaker System	10W + 10W / 2.0 ch			
	Sound Mode	6 modes (Standard, News, Music, Cinema, Soccer, Game)			
	Sound Optimizer	3 modes (Normal, Wall-Mount Type, Stand Type)			
	Clear Voice	•			
General Features	Management	Diagnostics (USB)			
	Interactivity	HTNG / HDMI-CEC			
	Connectivity	MHL			
	RJP Interface	RS-232C, HDMI			
	RJP Compatibility	Teledapt (RS-232C), Teledapt / Guestlink (HDMI CEC)			
	USB Media	USB Auto Playback+, Moving Picture Playback (DivX HD), Picture (JPEG), Audio Codec (MP3, AC3, MPEG, AAC, HEAAC, CDDA, LPCM)			
	Advanced Setting Option	Auto Off / Auto Sleep, Motion Eye Care, Smart Energy Saving			
Commercial Features	Anti-theft System	Kensington Lock			
		Welcome Screen/Video, Lock Mode, Multi-IR Code, Hotel Mode, USB Cloning, IR Out, SNMP, RTC (Real Time Clock), Internal Memory, Wi-Fi Dongle Ready, NTP (Network Time Protocol)			
Interface	Side	HDMI In, USB 2.0 (2)			
	Rear	RF In, AV In (Sharing with Component In), Component In, Optical Audio Out, RGB In, PC Audio Input (Sharing with Component In), RS-232C, HDMI In, LAN Port			
Cabinet	Bezel Width (L/R, U, B) : on bezel based (mm)	12.1, 12.1, 15.1 mm		12.9, 12.9, 15.9 mm	
	Bezel Width (L/R, U, B) : off bezel based (mm)	9.8, 9.8, 12.8 mm		10.4, 10.4, 13.4 mm	
	Vesa (mm)	200 x 200 mm	300 x 300 mm		
	WxHxD / weight (w/o stand)	974 x 571 x 70.3 mm (SPK 79.4) / 9.2 kg	1,107 x 645 x 70.3 mm (SPK 79.4) / 12 kg	1,241 x 720 x 41.5 mm (SPK 63.0) / 16.3 kg	
	WxHxD / weight (with stand)	974 x 620 x 199 mm / 9.5 kg	1,107 x 702 x 216 mm / 12.1 kg	1,241 x 775 x 216 mm / 16.6 kg	
	WxHxD / weight (carton)	1,060 x 660 x 152 mm / 11.7 kg	1,197 x 775 x 162 mm / 16.1 kg	1,360 x 835 x 152 mm / 21.3 kg	
power (Unit : Watts)	Voltage, HZ	100 - 240V, 50/60Hz			
	Max	89 W	99 W	117 W	
	Typical (Watts)	64 W	74 W	93 W	
	Energy Saving (Min)	52 W	60 W	75 W	
	Energy Saving (Med)	36 W	41 W	52 W	
	Energy Saving (Max)	20 W	23 W	28 W	
	Stand-by (Watts)	0.3 W ↓			
Standard Approval	Safety	CB			
	ETC	RoHS			
Software Compatibility	SuperSign Lite (Free), SuperSign C (Free), SuperSign Simple Editor (Free), SuperSign W				

LED

LAS040DA1

LAS060DA1

LAS100DA1

LAS160DA1

LAS200DA1

Physical Parameters	Pitch Name	P4	P6	P10	P16	P20
	Pixel Configuraiton	3 in 1 SMD	3 in 1 SMD	3 in 1 SMD	3 in 1 SMD	3 in 1 SMD
	Pixel Pitch(mm)	4.00	6.00	10.00	15.88	20.00
	Module Resolution (WxH)	60 x 60	40 x 40	24 x 24	16 x 8	16 x 8
	Module Dimensions(WxH,mm)	240 x 240	240 x 240	240 x 240	254 x 127	320 x 160
	No. of Modules per Unit Case (WxH)	4 x 4	4 x 4	4 x 4	4 x 6	4 x 5
	Unit Case Resolution (WxH)	240 x 240	160 x 160	96 x 96	64 x 48	64 x 40
	Unit Case Dimensions (W x H, mm)	960 x 960	960 x 960	960 x 960	1,016 x 762	1,280 x 800
	Unit Case Surface Area (m ²)	0.922	0.922	0.922	0.774	1.024
	Weight per Unit Case (kg)	25	28	28	25	36
Optical Specifications	Service access	Front or Rear	Front or Rear	Front or Rear	Front or Rear	Front or Rear
	Min. Brightness (After Calibration)	2,000	2,000	2,000	2,000	2,000
	Color Temperature	6,500	6,500	6,500	6,500	6,500
	Visual Viewing Angle (Horizontal)	160	160	160	160	160
Electrical Specifications	Visual Viewing Angle (Vertical)	140	140	140	140	140
	Contrast Ratio	5,000	2,000	2,000	2,000	2,000
	Power Consumption (W/Unit, Max.)	690	368	345	250	414
	Power Consumption (W/Unit, Avg.)	276	147	138	100	166
	Power Consumption (W/m ² , Max.)	749	399	374	323	404
	Power Supply (V)	100 to 240	100 to 240	100 to 240	100 to 240	100 to 240
	Frame Rate (Hz)	50 / 60	50 / 60	50 / 60	50 / 60	50 / 60
Operation Specifications	Refresh Rate (Hz)	960	960	960	960	960
	Lifetime (Half brightness)	100,000	100,000	100,000	100,000	100,000
	Operating Temperature	0°C to + 40°C	0°C to + 40°C	0°C to + 40°C	0°C to + 40°C	0°C to + 40°C
	IP rating Front	IP40	IP40	IP40	IP40	IP40
	IP rating Rear	IP20	IP20	IP20	IP20	IP20

LAF100DA1

LAS016DB2

LAS019DB2

LAS025DB2

LAS060DB4

Physical Parameters	Pitch Name	P10	P1.6	P1.9	P2.5	P6
	Pixel Configuraiton	3 in 1 SMD	3 in 1 SMD	3 in 1 SMD	3 in 1 SMD	3 in 1 SMD
	Pixel Pitch (mm)	10.00	1.67	1.92	2.50	6.00
	Module Resolution (W x H)	16 x 16	120 x 90	104 x 78	80 x 60	40 x 40
	Module Dimensions (W x H, mm)	160 x 160	200 x 150	200 x 150	200 x 150	240 x 240
	No. of Modules per Cabinet (WxH)	8 x 5	2 x 2	2 x 2	2 x 2	4 x 4
	Cabinet Resolution (WxH)	128 x 80	240 x 180	208 x 156	160 x 120	160 x 160
	Cabinet Dimensions (W x H, mm)	1,280 x 800	400 x 300	400 x 300	400 x 300	960 x 960
	Cabinet Surface Area (m ²)	1.024	0.120	0.120	0.120	0.922
	Weight per Cabinet (kg)	42	6	6	6	45
Optical Specifications	Service access	Top	Rear	Rear	Rear	Front or Rear
	Min. Brightness (After Calibration)	2,000	800	800	800	800
	Color Temperature	6,500	3,200 - 9,300	3,200 - 9,300	3,200 - 9,300	3,200 - 9,300
	Visual Viewing Angle (Horizontal)	160	160	160	160	160
	Visual Viewing Angle (Vertical)	140	140	140	140	160
	Contrast Ratio	2,000	3,000	3,000	3,000	1,000
	Electrical Specifications	Power Consumption (W / cabinet, Max.)	529	100	100	100
Power Consumption (W / cabinet, Avg.)		212	30	30	30	166
Power Consumption (W/m ² , Max.)		517	830	830	830	720
Power Supply (V)		100 to 240	110 to 240	110 to 240	110 to 240	110 to 240
Frame Rate (Hz)		50 / 60	50 / 60	50 / 60	50 / 60	50 / 60
Refresh Rate (Hz)		960	2,100	3,000	6,300	1,920
Operation Specifications		Lifetime (Half Brightness)	100,000	100,000	100,000	100,000
	Operating Temperature	0°C to + 40°C	-10°C to + 40°C	-10°C to + 40°C	-10°C to + 40°C	0°C to + 40°C
	IP rating Front	IP40	-	-	-	-
	IP rating Rear	IP20	-	-	-	-

LED						
		LBS060DA1	LBS080DA1	LBS100DA1	LBS120DA1	LBS160DA1
Physical Parameters	Pitch Name	P6	P8	P10	P12	P16
	Pixel Configuraiton	3 in 1 SMD	3 in 1 SMD	3 in 1 SMD	3 in 1 SMD	3 in 1 SMD
	Pixel Pitch (mm)	6.00	8.00	10.70	12.00	16.00
	Module Resolution (W x H)	32 x 32	24 x 24	18 x 18	16 x 16	12 x 12
	Module Dimensions (W x H, mm)	192 x 192	192 x 192	192 x 192	192 x 192	192 x 192
	No. of Modules per Cabinet (WxH)	4 x 6	4 x 6	4 x 6	4 x 6	4 x 6
	Cabinet Resolution (WxH)	128 x 192	96 x 144	72 x 108	64 x 96	48 x 72
	Cabinet Dimensions (W x H, mm)	768 x 1,152	768 x 1,152	768 x 1,152	768 x 1,152	768 x 1,152
	Cabinet Surface Area (m ²)	0.885	0.885	0.885	0.885	0.885
Weight per Cabinet (kg)	36	38	38	38	38	
Service access	Front or Rear	Front and Rear	Front and Rear	Front and Rear	Front and Rear	
Optical Specifications	Min. Brightness (After Calibration)	6,000	6,000	6,000	6,000	6,000
	Color Temperature	6,500	6,500	6,500	6,500	6,500
	Visual Viewing Angle (Horizontal)	160	160	160	160	160
	Visual Viewing Angle (Vertical)	90	90	110	100	90
	Contrast Ratio	3,000	3,000	3,000	3,000	3,000
Electrical Specifications	Power Consumption (W / cabinet, Max.)	690	771	805	748	794
	Power Consumption (W / cabinet, Avg.)	276	308	322	299	317
	Power Consumption (W/m ² , Max.)	780	871	910	845	897
	Power Supply (V)	100 to 240	100 to 240	100 to 240	100 to 240	100 to 240
	Frame Rate (Hz)	50 / 60	50 / 60	50 / 60	50 / 60	50 / 60
	Refresh Rate (Hz)	960	960	960	1,920	1,920
Operation Specifications	Lifetime (Half Brightness)	100,000	100,000	100,000	100,000	100,000
	Operating Temperature	-20°C to +50°C	-20°C to +50°C	-20°C to +50°C	-20°C to +50°C	-20°C to +50°C
	IP rating Front	IP65	IP65	IP65	IP65	IP65
	IP rating Rear	IP54	IP54	IP54	IP54	IP54

		LBS160VA1	LBS200VA1	LBF160DA1	LBB100DA1	LBB160DA1
Physical Parameters	Pitch Name	P16	P20	P16	P10	P16
	Pixel Configuraiton	Oval	Oval	3 in 1 SMD	3 in 1 SMD	3 in 1 SMD
	Pixel Pitch (mm)	16.00	20.00	16.00	10.00	16.00
	Module Resolution (W x H)	20 x 20	16 x 16	12 x 12	16 x 16	12 x 12
	Module Dimensions (W x H, mm)	320 x 320	320x320	192 x 192	160 x 160	192 x 192
	No. of Modules per Cabinet (WxH)	6 x 4	6 x 4	4 x 5	8 x 6	8 x 5
	Cabinet Resolution (WxH)	120 x 80	96 x 64	48 x 60	128 x 96	96 x 60
	Cabinet Dimensions (W x H, mm)	1,920 x 1,280	1,920 x 1,280	768 x 960	1,280 x 960	1,536 x 960
	Cabinet Surface Area (m ²)	2.458	2.458	0.737	1.229	1.475
Weight per Cabinet (kg)	109	107	40	62	72	
Service access	Front and Rear	Front or Rear	Top	Rear	Front and Rear	
Optical Specifications	Min. Brightness (After Calibration)	7,500	6,000	6,000	5,500	6,000
	Color Temperature	6,500	6,500	6,500	6,500	6,500
	Visual Viewing Angle (Horizontal)	160	160	160	160	160
	Visual Viewing Angle (Vertical)	60	60	90	100	90
	Contrast Ratio	3,000	3,000	3,000	3,000	3,000
Electrical Specifications	Power Consumption (W / cabinet, Max.)	1547	1380	667	1150	1265
	Power Consumption (W / cabinet, Avg.)	619	552	267	460	506
	Power Consumption (W/m ² , Max.)	629	562	905	936	858
	Power Supply (V)	100 to 240	100 to 240	100 to 240	100 to 240	100 to 240
	Frame Rate (Hz)	50 / 60	50 / 60	50 / 60	50 / 60	50 / 60
	Refresh Rate (Hz)	960	4,000	960	100,000	100,000
Operation Specifications	Lifetime (Half Brightness)	100,000	100,000	100,000	100,000	100,000
	Operating Temperature	-20°C to +50°C	-20°C to +50°C	-20°C to +50°C	-20°C to +50°C	-20°C to +50°C
	IP rating Front	IP65	IP65	IP65	IP65	IP65
	IP rating Rear	IP54	IP54	IP43	IP54	IP54



- SOUTH KOREA (HQ)
- WESTERN EUROPE
- CENTRAL EUROPE
- CIS
- NORTH & SOUTH AMERICA
- MIDDLE EAST & AFRICA
- ASIA

GLOBAL NETWORK

WESTERN EUROPE

LG Electronics B2B Operation Europe
Krijgsman 1 1186 DM Amstelveen Th E Netherlands

LG Electronics Deutschland GMBH
Berliner Straße 93 D-40880 Ratingen, Germany
Tel: 49-2154-492-181 | Fax: 49-2154-492-214

LG Electronics Italia S.P.A.
Via Aldo Rossi 4, 20149 Milano, Italy
Tel: 39-02-5180-1124 | Fax: 39-2-5776-0556

LG Electronics Hellas S.A.
Ethnarhou Makariou St. Delta Paleo Faliro PO.
Box 77331 GR17501 Paleo Faliro, Athens Greece
Tel: 30-210-9490-709 | Fax: 30-210-4800-510

LG Electronics France S.A.R.L.
Paris Nord II 117, Avenue des Nations-B.P. 59372
Villepinte 95942 Roissy CDG CEDEX, France
Tel: 33-1-49-89-89-41 | Fax: 33-1-49-89-89-39

LG Electronics Benelux
Krijgsman 1, 1186 DM Amstelveen, The Netherlands
Tel: 31-20-456-3205

LG Electronics U.K. Ltd.
Velocity 2, Brooklands Drive, Brooklands, Weybridge, KT13 0SL, United Kingdom
Tel: 44-17-5349-1585 | Fax: 44-17-5369-3061

CENTRAL EUROPE

LG Electronics Nordic AB
PO. Box 83 Esbogatan 18 SE-164 94 Kista, Sweden
Tel: 46-8-5664-1540 | Fax: 46-8-5664-1599

LG Electronics Norway
Lysaker Torg 15 Postboks 275 1326 Lysaker Norge
Tel: 47-67-11-10-90 | Fax: 47-67-11-10-99

LG Electronics Denmark
Kaleved Brygge 47 2 sal., 1560 Copenhagen V., Denmark
Tel: 45-70-25-06-80 | Fax: 45-70-25-06-81

LG Electronics Finland
Ayrinte 12 A 01510 Vantaa Suom
Tel: 358-4-249-0311 | Fax: 358-9-222-77-20

LG Electronics España C/ Chile N° 1, Km 24 – A6. Las Rozas. Madrid. CP. 28290
Tel: 34-91-2112-261 | Fax: 34-91-2112-257

LG Electronics Portugal S.A
Quinta da Fonte - Edifício D. Amelia Rua Vitor Camara, 2 Piso 2, 2770-229 Paco de Arcos, Portugal
Tel: 35-121-120-1069 | Fax: 35-121-120-2241

LG Electronics Austria GMBH
Office Campus Gasometer, Guglgasse 15, Bauwerk 4a/Stock 5&6, A-1110 Wien, Austria
Tel: 43-1-74015-2006 | Fax: 43-1-99460-5629

CIS

LG Electronics Poland SP Z.O.O
Ul. Woloska 22 02-675 Warszawa
Tel: 48-22-481-7208 | Fax: 48-22-606-1459

LG Electronics Magyar Kft
H-1097, Budapest, Konyves Kalman krt. 3/A, Hungary
Tel: 36-1-455-8830 | Fax: 36-1-216-3074

LG Electronics Romania S.R.L.
17-21 Bucuresti-Ploiesti Baneasa Center, 5th Floor Bucharest, Romania
Tel: 40-21-233-2491 | Fax: 40-21-233-2478

LG Electronics CZ, S.R.O
Českomoravská 2420/15, Praha 9, 190 93, Czech Republic
Tel: 420-234-094-631

NORTH & SOUTH AMERICA

LG Electronics U.S.A. Inc. (www.lgusa.com)
1000 Sylvan Avenue, Englewood Cliffs, NJ 07632, U.S.A.
Tel: 1-201-816-2000 | Fax: 1-201-816-2188

LG Electronics Canada, Inc. (www.lgca.com)
20 Norelco Drive. North York, ON M9L 2X6, Canada
Tel: 1-647-253-5300

LG Electronics Mexico S.A. De C.V.
Sor Juana Inés de la Cruz No. 555, Col. San Lorenzo, Tlalpan, Estado de México, México
Tel: 52-55-8000-5324 | Fax: 52-555-321-1929

LG Electronics Panama S.A.
Miami Office 8333 NW. 53rd Street, Suite 302. Doral, Florida 33166 USA
Tel: 1-305-477-1882 (226)

LG Electronics Colombia Ltda.
Carrera 11 No. 94 A-34, Piso 8 Bogota - Cundinamarca, Colombia
Tel: 57-1-8964000 | Fax: 57-1-4927221

LG Electronics Peru S.A.
Av. Republica de Colombia 791 - Piso 12 San Isidro, Lima, Peru
Tel: 51-1-415-0000

LG Electronics de Sao Paulo, Ltda.
Market Place Tower 2, Av. Dr. Chucuri Zaidan, 940- 3rd Floor, Vila Cordeiro, Sao Paulo-SP, CEP04583-110
Tel: 55-11-2162-5454 | Fax: 55-11-2162-5600

ASIA

LG Electronics India Pvt Ltd.
4 Basseinaya Str. (Litera A), 01004, Kiev, Ukraine
Tel: 38-044-201-4352 | Fax: 38-044-210-4373

LG Electronics Kazakhstan
Timiryazeva Str., 28 "B", Business Center "Grand Alatau", 4 Floor, Almaty Kazakhstan
Tel: 7-32-7275-8031 | Fax: 7-327-275-8290

LG Electronics Inc. Tashkent Office
3RD Floor, 89NUKUS STR, Tashkent, 700025, Uzbekistan.
Tel: 998-71-120-6260 | Fax: 998-71-120-6223

LG Electronics Latvia SIA
Gredu iela 4a, Riga, LV-1019
Tel: 371-731-1383 | Fax: 371-731-1338

LG Electronics Inc. Minsk Office
Kozlov Lane, 7, 9th Floor, 220037, Minsk, Belarus
Tel: 375-17-2979456 | Fax: 375-17-2351994

LG Electronics Inc. Chisinau Office
36a (2nd floor), Bukuresti street, Chisinau, Moldova
Tel: 373-22-26-0535 | Fax: 373-22-26-0537

LG Electronics St. Petersburg Office
Business Center "Neptun", 3rd Floor St. Petersburg, Russia
Tel: 7-812-320-2610 | Fax: 7-812-320-2611

LG Electronics Vladivostok Office
12th Floor Sa, Uboreshicha, Str. Vladivostok, 690091, Russia
Tel: 7-4232-650-921 | 7-4232-650-924

MIDDLE EAST & AFRICA

LG Electronics Morocco SaRL
4th & 5th Floor on BLDG No 3&4, Zenith Millenium, Sidi Maarouf, Lotissement Attaoufik, Casablanca, Morocco
Tel: 212-2-297-3232 | Fax: 212-2-297-3288

LG Electronics Tunisia office (TU)
Immeuble LYS - Les Jardins du Lac, Lac 2, Les Berges Du lac 1053, Tunis
Tel: 216-983-70-601

LG Electronics Algeria SaRL
98, Rue Mohamed Boudiaf, Chéraga, Algiers - Algeria
Tel: 213-560-026-417

LG Electronics Nigeria
65, Opebi Road, Ikeja, Lagos, Nigeria
Tel: 234-805-889-9922

LG Electronics Tunisia office (TU)
Kaptanpasa Mah. Piyalepasa Bulvarı No:14 Ortadoğu Plaza Kat: 7 Okmeydanı/Sisli Istanbul Turkey
Tel: 90-533-706-9018

LG Electronics Levent Ltd.
Jordan, Abdoun, Princess Basmah Street, Issam Al Khatib Complex, P.O.Box 930254, Amman- 11193, Jordan
Tel: 962-6-568-4309 | Fax: 962-6-565-2863

LG Electronics Egypt
67 Ninety St., The primary sector, The city center fifth avenue, land mark office building (1), Katameya, Cairo, Egypt
Tel: 2-01011328258

WESTERN EUROPE

LG Electronics Chile. Limitada
Isidora Goyenechea 2800 Piso 10, Las Condes, Santiago.
Tel: +56-2-2941-9200

LG Electronics Argentina S.A.
Juana Manso 999 Piso 5 - Torre Norte - Puerto Madero (C1107CBS) Ciudad Autónoma de Buenos Aires, Argentina
Tel: 54-11-5352-5454

LG Electronics Mexico S.A. De C.V.
Sor Juana Inés de la Cruz No. 555, Col. San Lorenzo, Tlalpan, Estado de México, México
Tel: 52-55-8000-5324 | Fax: 52-555-321-1929

LG Electronics Panama S.A.
Miami Office 8333 NW. 53rd Street, Suite 302. Doral, Florida 33166 USA
Tel: 1-305-477-1882 (226)

LG Electronics Colombia Ltda.
Carrera 11 No. 94 A-34, Piso 8 Bogota - Cundinamarca, Colombia
Tel: 57-1-8964000 | Fax: 57-1-4927221

LG Electronics Peru S.A.
Av. Republica de Colombia 791 - Piso 12 San Isidro, Lima, Peru
Tel: 51-1-415-0000

LG Electronics de Sao Paulo, Ltda.
Market Place Tower 2, Av. Dr. Chucuri Zaidan, 940- 3rd Floor, Vila Cordeiro, Sao Paulo-SP, CEP04583-110
Tel: 55-11-2162-5454 | Fax: 55-11-2162-5600

ASIA

LG Electronics U.S.A. Inc. (www.lgcommercial.com)
2000 Millbrook Drive, Lincolnshire, IL 60069, U.S.A.
Tel: 1-847-941-8737 | Fax: 1-847-941-8763

LG Electronics Canada, Inc. (www.lgca.com)
20 Norelco Drive. North York, ON M9L 2X6, Canada
Tel: 1-647-253-5300

LG Electronics Mexico S.A. De C.V.
Sor Juana Inés de la Cruz No. 555, Col. San Lorenzo, Tlalpan, Estado de México, México
Tel: 52-55-8000-5324 | Fax: 52-555-321-1929

LG Electronics Panama S.A.
Miami Office 8333 NW. 53rd Street, Suite 302. Doral, Florida 33166 USA
Tel: 1-305-477-1882 (226)

LG Electronics Colombia Ltda.
Carrera 11 No. 94 A-34, Piso 8 Bogota - Cundinamarca, Colombia
Tel: 57-1-8964000 | Fax: 57-1-4927221

LG Electronics Peru S.A.
Av. Republica de Colombia 791 - Piso 12 San Isidro, Lima, Peru
Tel: 51-1-415-0000

LG Electronics de Sao Paulo, Ltda.
Market Place Tower 2, Av. Dr. Chucuri Zaidan, 940- 3rd Floor, Vila Cordeiro, Sao Paulo-SP, CEP04583-110
Tel: 55-11-2162-5454 | Fax: 55-11-2162-5600

WESTERN EUROPE

LG Electronics U.S.A. Inc. (www.lgcommercial.com)
2000 Millbrook Drive, Lincolnshire, IL 60069, U.S.A.
Tel: 1-847-941-8737 | Fax: 1-847-941-8763

LG Electronics Canada, Inc. (www.lgca.com)
20 Norelco Drive. North York, ON M9L 2X6, Canada
Tel: 1-647-253-5300

LG Electronics Mexico S.A. De C.V.
Sor Juana Inés de la Cruz No. 555, Col. San Lorenzo, Tlalpan, Estado de México, México
Tel: 52-55-8000-5324 | Fax: 52-555-321-1929

LG Electronics Panama S.A.
Miami Office 8333 NW. 53rd Street, Suite 302. Doral, Florida 33166 USA
Tel: 1-305-477-1882 (226)

LG Electronics Colombia Ltda.
Carrera 11 No. 94 A-34, Piso 8 Bogota - Cundinamarca, Colombia
Tel: 57-1-8964000 | Fax: 57-1-4927221

LG Electronics Peru S.A.
Av. Republica de Colombia 791 - Piso 12 San Isidro, Lima, Peru
Tel: 51-1-415-0000

LG Electronics de Sao Paulo, Ltda.
Market Place Tower 2, Av. Dr. Chucuri Zaidan, 940- 3rd Floor, Vila Cordeiro, Sao Paulo-SP, CEP04583-110
Tel: 55-11-2162-5454 | Fax: 55-11-2162-5600

ASIA

LG Electronics U.S.A. Inc. (www.lgcommercial.com)
2000 Millbrook Drive, Lincolnshire, IL 60069, U.S.A.
Tel: 1-847-941-8737 | Fax: 1-847-941-8763

LG Electronics Canada, Inc. (www.lgca.com)
20 Norelco Drive. North York, ON M9L 2X6, Canada
Tel: 1-647-253-5300

LG Electronics Mexico S.A. De C.V.
Sor Juana Inés de la Cruz No. 555, Col. San Lorenzo, Tlalpan, Estado de México, México
Tel: 52-55-8000-5324 | Fax: 52-555-321-1929

LG Electronics Panama S.A.
Miami Office 8333 NW. 53rd Street, Suite 302. Doral, Florida 33166 USA
Tel: 1-305-477-1882 (226)

LG Electronics Colombia Ltda.
Carrera 11 No. 94 A-34, Piso 8 Bogota - Cundinamarca, Colombia
Tel: 57-1-8964000 | Fax: 57-1-4927221

LG Electronics Peru S.A.
Av. Republica de Colombia 791 - Piso 12 San Isidro, Lima, Peru
Tel: 51-1-415-0000

LG Electronics de Sao Paulo, Ltda.
Market Place Tower 2, Av. Dr. Chucuri Zaidan, 940- 3rd Floor, Vila Cordeiro, Sao Paulo-SP, CEP04583-110
Tel: 55-11-2162-5454 | Fax: 55-11-2162-5600

ASIA

LG Electronics U.S.A. Inc. (www.lgcommercial.com)
2000 Millbrook Drive, Lincolnshire, IL 60069, U.S.A.
Tel: 1-847-941-8737 | Fax: 1-847-941-8763

LG Electronics Canada, Inc. (www.lgca.com)
20 Norelco Drive. North York, ON M9L 2X6, Canada
Tel: 1-647-253-5300

LG Electronics Mexico S.A. De C.V.
Sor Juana Inés de la Cruz No. 555, Col. San Lorenzo, Tlalpan, Estado de México, México
Tel: 52-55-8000-5324 | Fax: 52-555-321-1929

LG Electronics Panama S.A.
Miami Office 8333 NW. 53rd Street, Suite 302. Doral, Florida 33166 USA
Tel: 1-305-477-1882 (226)

LG Electronics Colombia Ltda.
Carrera 11 No. 94 A-34, Piso 8 Bogota - Cundinamarca, Colombia
Tel: 57-1-8964000 | Fax: 57-1-4927221

LG Electronics Peru S.A.
Av. Republica de Colombia 791 - Piso 12 San Isidro, Lima, Peru
Tel: 51-1-415-0000

LG Electronics de Sao Paulo, Ltda.
Market Place Tower 2, Av. Dr. Chucuri Zaidan, 940- 3rd Floor, Vila Cordeiro, Sao Paulo-SP, CEP04583-110
Tel: 55-11-2162-5454 | Fax: 55-11-2162-5600