

ThinkSystem M.2 Drives and M.2 Adapters

Product Guide

M.2 is a solid-state drive (SSD) form factor primarily used as an operating system boot solution in conventional rack and tower servers, or as small form factor storage offering for edge servers.

Lenovo ThinkSystem servers support M.2 drives in one of three ways, depending on the server selected:

- One or two drives, mounted in an M.2 adapter, vertically in a dedicated slot
- Two or four drives, mounted horizontally in an M.2 adapter
- Installed directly on the system board

One example is the ThinkSystem M.2 RAID B540i-2i SATA/NVMe Adapter, as shown in the following figure, with one M.2 drive installed.

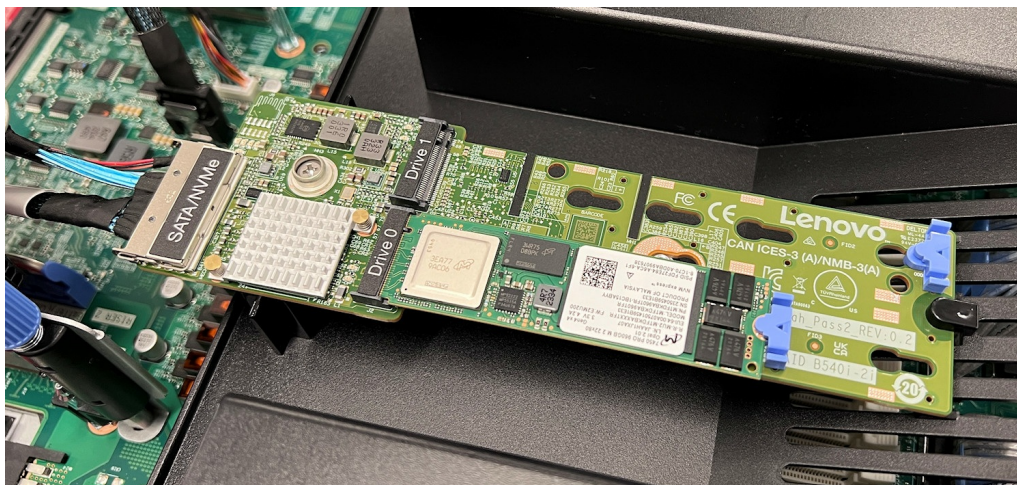


Figure 1. ThinkSystem M.2 RAID B540i-2i SATA/NVMe Adapter

Did you know?

Many of the M.2 adapters include a built-in RAID controller and allows two installed M.2 drives to be configured either as RAID-1, RAID-0, or two independent drives (JBOD mode).

The Dual M.2 Adapter features a Lenovo patented design that provides a tool-less method for attaching back-to-back M.2 modules to the adapter.

Part number information - Adapters

The following table lists the ThinkSystem part numbers for M.2 adapters and modules.

Table 1. M.2 adapters

Part number	Feature	Description	Function
M.2 adapters with side-by-side design			
4Y37A09739	B5XH	ThinkSystem M.2 SATA 2-Bay RAID Enablement Kit	Supports 2x SATA drives with integrated Marvell RAID
4Y37A09750	B8P9	ThinkSystem M.2 NVMe 2-Bay RAID Enablement Kit	Supports 2x NVMe drives (x1 connection) with integrated Marvell RAID
4Y37A90063	BYFF	ThinkSystem M.2 RAID B540i-2i SATA/NVMe Adapter	Supports 2x SATA drives or 2x NVMe drives (x1 connection) with integrated Broadcom RAID
4Y37A09738	B5XJ	ThinkSystem M.2 SATA/NVMe 2-Bay Enablement Kit	Supports 2x SATA or 2x NVMe drives (x1 connection), no integrated RAID
4Y37A79663	BM8X	ThinkSystem M.2 SATA/x4 NVMe 2-Bay Adapter	Supports 2x SATA or 2x NVMe drives (x4 connection), no integrated RAID
M.2 side-by-side adapter in a PCIe adapter bracket			
4C57A85377	B5XJ + BMTU	ThinkSystem M.2 SATA/NVMe 2-Bay Enablement Adapter	Supports 2x SATA or 2x NVMe drives (x1 connection), no integrated RAID
M.2 adapters with back-to-back design			
7Y37A01092	AUMU	ThinkSystem M.2 Enablement Kit	Contains the Single M.2 Adapter; supports 1 drive
7Y37A01093	AUMV	ThinkSystem M.2 with Mirroring Enablement Kit	Contains the Dual M.2 Adapter, supports 1 or 2 drives with RAID
4M17A60519	B88P	ThinkSystem SE350 M.2 Mirroring Enablement Kit	Contains the Dual M.2 Adapter, supports 1 or 2 drives with RAID
M.2 4-bay adapters (SE350 only)			
4M17A37281	B6FF	ThinkSystem SE350 M.2 SATA/NVMe 4-bay Data Drive Enablement Kit	Supports 4 SATA or 4 NVMe drives, no RAID
4M17A37606	B6FG	ThinkSystem SE350 M.2 SATA 4-Bay Data RAID Mirroring Enablement Kit	Supports 4 SATA drives with RAID
M.2 thermal kit (some servers)			
4XH7A08791	B31F	ThinkSystem SR650/SR550/SR590 M.2 Thermal Kit	Contains an air baffle required by some server configurations

Part number information - Drives

The following table lists the ThinkSystem part numbers for M.2 drives.

Recommendations with VMware ESXi: VMware recommends that only higher-endurance M.2 drives be used as boot drives. See the following support tip for more information:
<https://support.lenovo.com/us/en/solutions/ht512201>

M.2 drives:

- [M.2 SATA drives](#)
- [M.2 PCIe 4.0 NVMe drives](#)
- [M.2 PCIe 3.0 NVMe drives](#)

SED support: The tables include a column to indicate which drives support SED encryption. The encryption functionality can be disabled if needed. Note: Not all SED-enabled drives have "SED" in the description.

Table 2. M.2 SATA drives

Part number	Feature code	Description	SED support
M.2 SSDs - 6 Gb SATA - Read Intensive/Entry (<3 DWPD)			
4XB7A89422	BYF7	ThinkSystem M.2 ER3 240GB Read Intensive SATA 6Gb NHS SSD	Support
4XB7A90049	BYF8	ThinkSystem M.2 ER3 480GB Read Intensive SATA 6Gb NHS SSD	Support
4XB7A90230	BYF9	ThinkSystem M.2 ER3 960GB Read Intensive SATA 6Gb NHS SSD	Support
4XB7A90105	BXMK	ThinkSystem M.2 ER2 240GB Read Intensive SATA 6Gb NHS SSD	Support
4XB7A90106	BXMJ	ThinkSystem M.2 ER2 480GB Read Intensive SATA 6Gb NHS SSD	Support
4XB7A82286	BQ1Z	ThinkSystem M.2 5400 PRO 240GB Read Intensive SATA 6Gb NHS SSD	Support
4XB7A82287	BQ1Y	ThinkSystem M.2 5400 PRO 480GB Read Intensive SATA 6Gb NHS SSD	Support
4XB7A82288	BQ20	ThinkSystem M.2 5400 PRO 960GB Read Intensive SATA 6Gb NHS SSD	Support
7N47A00129	AUUL	ThinkSystem M.2 32GB SATA 6Gbps Non-Hot Swap SSD	No
7N47A00130	AUUV	ThinkSystem M.2 128GB SATA 6Gbps Non-Hot Swap SSD	No
4XB7A17073	B919	ThinkSystem M.2 5300 480GB SATA 6Gbps Non-Hot Swap SSD	No
4XB7A17212	BCP0	ThinkSystem M.2 5300 480GB SATA 6Gbps Non-Hot Swap SSD SED	Support
4XB7A17074	B8JJ	ThinkSystem M.2 5300 960GB SATA 6Gbps Non-Hot Swap SSD	No
4XB7A38180	BCNZ	ThinkSystem M.2 5300 1.92TB SATA 6Gbps Non-Hot Swap SSD	No
4XB7A39422	B758	ThinkSystem M.2 120GB Industrial A600i SATA SSD	No
4XB7A37270	B6FT	ThinkSystem M.2 120GB Industrial A600i SATA SED SSD	Support
4XB7A39423	B759	ThinkSystem M.2 480GB Industrial A600i SATA SSD	No
4XB7A37271	B6FK	ThinkSystem M.2 480GB Industrial A600i SATA SED SSD	Support
4XB7A39424	B75A	ThinkSystem M.2 800GB Industrial A600i SATA SSD	No
4XB7A37272	B6FL	ThinkSystem M.2 800GB Industrial A600i SATA SED SSD	Support

Table 3. M.2 PCIe 4.0 NVMe drives

Part number	Feature code	Description	SED support
M.2 SSDs - PCIe 4.0 NVMe - Mixed Use/Mainstream (3-5 DDPD)			
4XB7A84603	BS2Q	ThinkSystem M.2 7450 MAX 800GB Mixed Use NVMe PCIe 4.0 x4 NHS SSD	Support
4XB7A82676	BQUL	ThinkSystem M.2 7450 MAX 800GB Mixed Use NVMe PCIe 4.0 x4 NHS SSD (with Heatsink)	Support
M.2 SSDs - PCIe 4.0 NVMe - Read Intensive/Entry (<3 DDPD)			
4XB7A90102	BXMH	ThinkSystem M.2 PM9A3 960GB Read Intensive NVMe PCIe 4.0 x4 NHS SSD	Support
4XB7A90103	BXMG	ThinkSystem M.2 PM9A3 1.92TB Read Intensive NVMe PCIe 4.0 x4 NHS SSD	Support
4XB7A90104	BXMF	ThinkSystem M.2 PM9A3 3.84TB Read Intensive NVMe PCIe 4.0 x4 NHS SSD	Support
4XB7A82636	BS2P	ThinkSystem M.2 7450 PRO 480GB Read Intensive NVMe PCIe 4.0 x4 NHS SSD	Support
4XB7A13999	BKSR	ThinkSystem M.2 7450 PRO 960GB Read Intensive NVMe PCIe 4.0 x4 NHS SSD	Support
4XB7A14000	BKSS	ThinkSystem M.2 7450 PRO 1.92TB Read Intensive Entry NVMe PCIe 4.0 x4 NHS SSD	Support
4XB7A84604	BS2R	ThinkSystem M.2 7450 PRO 3.84TB Read Intensive NVMe PCIe 4.0 x4 NHS SSD	Support
4XB7A83139	BS46	ThinkSystem M.2 7450 PRO 480GB Read Intensive NVMe PCIe 4.0 x4 NHS SSD (with Heatsink)	Support
4XB7A82674	BQUJ	ThinkSystem M.2 7450 PRO 960GB Read Intensive NVMe PCIe 4.0 x4 NHS SSD (with Heatsink)	Support
4XB7A82675	BQUK	ThinkSystem M.2 7450 PRO 1.92TB Read Intensive NVMe PCIe 4.0 x4 NHS SSD (with Heatsink)	Support
4XB7A82852	BRFZ	ThinkSystem M.2 7450 PRO 3.84TB Read Intensive NVMe PCIe 4.0 x4 NHS SSD (with Heatsink)	Support

Table 4. M.2 PCIe 3.0 NVMe drives

Part number	Feature code	Description	SED support
M.2 SSDs - PCIe 3.0 NVMe - Read Intensive/Entry (<3 DDPD)			
4XB7A82625	BQUM	ThinkSystem M.2 N600Si 650GB Read Intensive NVMe PCIe 3.0 x4 NHS SSD SED (Industrial)	Support
4XB7A82627	BQUN	ThinkSystem M.2 N600Si 960GB Read Intensive NVMe PCIe 3.0 x4 NHS SSD SED (Industrial)	Support
4XB7A82628	BQUP	ThinkSystem M.2 N600Si 1.92TB Read Intensive NVMe PCIe 3.0 x4 NHS SSD SED (Industrial)	Support
4XB7A64190	BE1X	ThinkSystem M.2 N600Si 650GB NVMe PCIe 3.0 x4 Non-Hot Swap SSD (Industrial)	No
4XB7A64204	BE1V	ThinkSystem M.2 N600Si 1.92TB NVMe PCIe 3.0 x4 Non-Hot Swap SSD (Industrial)	No

Implementation

M.2 is primarily used as an operating system boot solution for conventional rack and tower servers. In edge servers, M.2 is also used for data and application storage, however best practices for edge servers is placing the boot/OS on different drives to data/applications. Drive endurance is an important criteria for both OS and data drives, so care should be taken to select the M.2 drives that match the intended workload. Review the endurance values for the drives you plan to use and ensure they meet the requirements for the OS and applications you plan to run.

Tip: The M.2 adapters and modules are also referred to as enablement kits. In the product publications, they are referred to as M.2 backplanes. These terms are interchangeable.

Implementation of M.2 in ThinkSystem servers is several ways, as described below:

- [Integrated on the system board](#)
- [M.2 adapter with side-by-side drives](#)
- [M.2 adapter with back-to-back drives](#)
- [M.2 adapter in a PCIe slot](#)
- [SE350 data drive implementation](#)

Integrated on the system board

On the ST50 V2, ST250 and SR250, a single M.2 drive is installed directly on the system board.

On the SD530 V3 and SD550 V3, two M.2 drives are installed directly on the system board.

On the SD650 V3, SD650-I V3, SD650-N V3, SD665 V3, and SD665-N V3, a single M.2 drive is installed directly on a cold plate mounted on CPU 1

M.2 adapter with side-by-side drives

On servers with 3rd-Gen or later Intel Xeon Scalable or AMD EPYC processors, an M.2 module is mounted horizontally and is cabled to the system board.

The following M.2 modules are offered:

- SATA RAID M.2 Module, which supports two SATA M.2 drives and includes integrated Marvell RAID functionality; available as the ThinkSystem M.2 SATA 2-Bay RAID Adapter, 4Y37A09739
- NVMe RAID M.2 Module, which supports two NVMe M.2 drives and includes integrated Marvell RAID functionality; available as the ThinkSystem M.2 NVMe 2-Bay RAID Adapter, 4Y37A09750
- SATA/NVMe RAID M.2 Module, which supports two NVMe drives or two SATA drives, and includes integrated Broadcom RAID functionality; available as the ThinkSystem M.2 RAID B540i-2i SATA/NVMe Adapter, 4Y37A90063
- SATA/NVMe M.2 Module, which supports two SATA or two NVMe M.2 drives (no integrated RAID). NVMe drives are connected using a PCIe x1 interface. Available as the ThinkSystem M.2 SATA/NVMe 2-Bay Enablement Kit, 4Y37A09738
- SATA/NVMe x4 M.2 Module, which supports two SATA or two NVMe M.2 drives (no integrated RAID). NVMe drives are connected using a PCIe x4 interface; available as the ThinkSystem M.2 SATA/x4 NVMe 2-Bay Adapter, 4Y37A79663

The following figure shows the SATA/NVMe M.2 Module with two 128 GB M.2 drives installed. Note that the production M.2 Module has a green circuit board, not the red color as shown here.

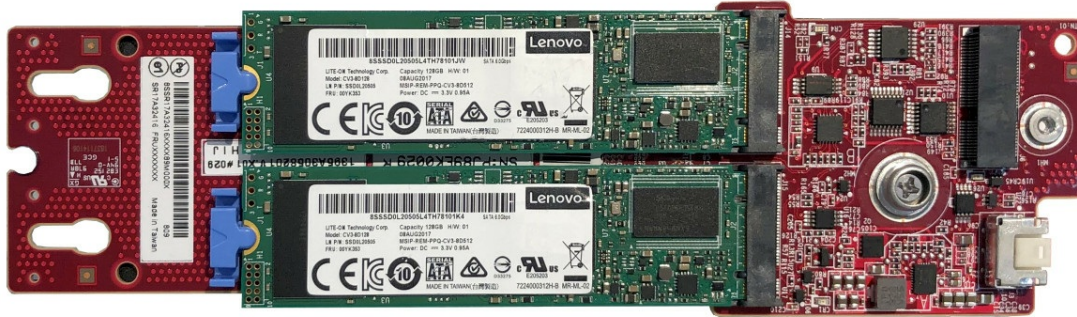


Figure 2. SATA/NVMe M.2 Module with 2 drives

M.2 adapter with back-to-back drives

On servers with 1st Gen and 2nd Gen Intel Xeon Scalable processors, and on the SE350, the M.2 drives install into an M.2 adapter which in turn is installed in a dedicated slot in the server. With two M.2 drives configured, the drives are configured by default as a RAID-1 mirrored pair for redundancy. There are two M.2 adapters supported:

- Single M.2 Adapter, which supports one M.2 drive; available as the ThinkSystem M.2 Enablement Kit
- Dual M.2 Adapter, which supports one or two M.2 drives; available as the ThinkSystem M.2 with Mirroring Enablement Kit. Includes a built-in RAID controller and allows two installed M.2 drives to be configured either as RAID-1, RAID-0, or two independent drives (JBOD mode).

The Dual M.2 Adapter, as shown in the following figure, with one 128GB M.2 drive partially inserted. The second M.2 drive is installed on the other side of the adapter.



Figure 3. Dual M.2 Adapter and a 128 GB M.2 drive

The Single M.2 Adapter is shown in the following photo, with the 32GB M.2 drive installed.



Figure 4. Single M.2 Adapter and a 32 GB M.2 drive

M.2 adapter in a PCIe slot

On the ST250 V2, ST250 V3, SR250 V2 and SR250 V3, the M.2 side-by-side module is mounted in a bracket that is installed in a PCIe slot.

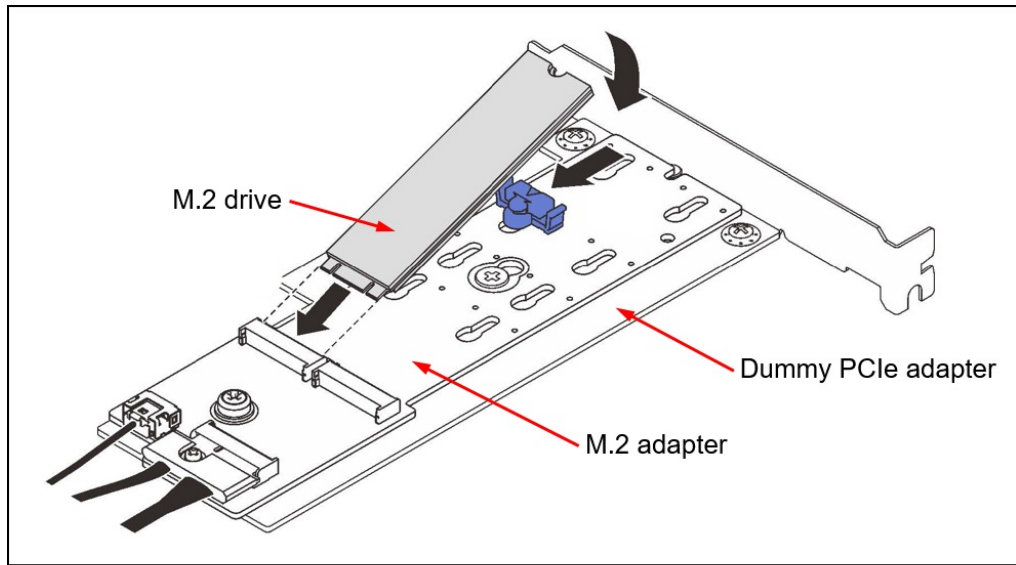


Figure 5. M.2 adapter installed in a PCIe slot

The M.2 module offered is:

- ThinkSystem M.2 SATA/NVMe 2-Bay Enablement Adapter, 4C57A85377, which is a combination of the ThinkSystem M.2 SATA/NVMe 2-Bay Enablement Kit (feature B5XJ) and a Dummy PCIe Card bracket (feature BMTU)

SE350 data drive implementation

On the ThinkSystem SE350 edge server, additional M.2 data drives are mounted on a 4-drive adapter that plugs into the PCIe riser.

There are two M.2 modules offered:

- ThinkSystem SE350 M.2 SATA/NVMe 4-bay Data Drive Enablement Kit, which supports four SATA or four NVMe M.2 drives without RAID support
- ThinkSystem SE350 M.2 SATA 4-Bay Data RAID Mirroring Enablement Kit, which supports four SATA drives and supports RAID 0/1 functionality

The following figure shows the ThinkSystem SE350 M.2 SATA/NVMe 4-bay Data Drive Enablement Kit installed in the PCIe riser.



Figure 6. ThinkSystem SE350 M.2 SATA/NVMe 4-bay Data Drive Enablement Kit

Features

Common features of the all ThinkSystem M.2 offerings:

- Hardened boot media that does not use a drive bay
- Both mechanically & electronically designed to be more robust than any prior implementation
- Design provides hardware mirroring of two M.2 SSDs
- M.2 SSDs have higher mean time between failures (MTBF) than SD cards or USB keys
- Tool-less clip design that supports back to back connector layout, providing simple install in limited space.
- When using configure-to-order (CTO), you can also select zero drives and add drives as a field upgrade.

M.2 adapters with side-by-side design

The M.2 SATA 2-Bay RAID Enablement Kit (4Y37A09739) has the following features:

- Supports one or two SATA M.2 drives
- Support 42mm, 60mm, 80mm and 110mm drive form factors (2242, 2260, 2280 and 22110)
- RAID support via an onboard Marvell 88SE9230 SATA RAID Controller
- Support JBOD, RAID-0 and RAID-1 (RAID support requires two M.2 drives)
- PCIe 2.0 x2 host interface; 6Gbps SATA connection to the drives
- Management and configuration support via UEFI and OS-based tools
- Supports monitoring and reporting of events and temperature through I2C
- Firmware update via Lenovo firmware update tools
- No support for SED drive encryption

The M.2 NVMe 2-Bay RAID Enablement Kit (4Y37A09750) has the following features:

- Supports one or two NVMe M.2 drives
- Support 42mm, 60mm, 80mm and 110mm drive form factors (2242, 2260, 2280 and 22110)
- RAID support via an onboard Marvell 88NR2241 NVMe RAID Controller
- With 1 drive, supports single-drive RAID-0
- With 2 drives, supports 2-drive RAID-0, 2-drive RAID-1, or two single-drive RAID-0 arrays
- PCIe 3.0 x2 host interface; PCIe 3.0 x1 connection to each drive
- Management and configuration support via UEFI and OS-based tools
- Supports monitoring and reporting of events and temperature through I2C
- Firmware update via Lenovo firmware update tools
- No support for SED drive encryption

The ThinkSystem M.2 RAID B540i-2i SATA/NVMe Adapter (4Y37A90063) has the following features:

- Supports one or two M.2 drives, either SATA or NVMe
- Support 42mm, 60mm, 80mm and 110mm drive form factors (2242, 2260, 2280 and 22110)
- RAID support via an onboard Broadcom SAS3808N RAID Controller
- With 1 drive, supports JBOD
- With 2 drives, supports 2-drive RAID-0, 2-drive RAID-1, or JBOD
- PCIe 4.0 x2 host interface; PCIe 4.0 x1 connection to each drive
- Management and configuration support via UEFI and OS-based tools
- Supports monitoring and reporting of events and temperature
- Firmware update via Lenovo firmware update tools
- Supports SED drive encryption

The SATA/NVMe Enablement Kit (4Y37A09738) and ThinkSystem M.2 SATA/NVMe 2-Bay Enablement Adapter (4C57A85377) have the following features:

- Supports one or two M.2 drives, either SATA or NVMe
- When two drives installed, they must be either both SATA or both NVMe
- Support 42mm, 60mm, 80mm and 110mm drive form factors (2242, 2260, 2280 and 22110)
- No integrated RAID support; RAID supported by VROC (Intel servers only) or by a separate PCIe adapter
- Either 6Gbps SATA or PCIe 3.0 x1 interface to the drives depending on the drives installed
- Supports monitoring and reporting of events and temperature through I2C
- Firmware update via Lenovo firmware update tools
- When connected to a separate PCIe RAID adapter, supports SED drive encryption via the RAID adapter, otherwise no SED support

The ThinkSystem M.2 SATA/x4 NVMe 2-Bay Enablement Kit (4Y37A79663) has the following features:

- Supports one or two M.2 drives, either SATA or NVMe
- When two drives installed, they must be either both SATA or both NVMe
- Support 42mm, 60mm, 80mm and 110mm drive form factors (2242, 2260, 2280 and 22110)
- No integrated RAID support; RAID supported by VROC (Intel servers only) or by a separate PCIe adapter
- Either 6Gbps SATA or PCIe 4.0 x4 interface to the drives depending on the drives installed
- Supports monitoring and reporting of events and temperature through I2C
- Firmware update via Lenovo firmware update tools
- When connected to a separate PCIe RAID adapter, supports SED drive encryption via the RAID adapter, otherwise no SED support

M.2 adapters with back-to-back design

Features of the ThinkSystem M.2 with Mirroring Enablement Kit (7Y37A01093) and ThinkSystem SE350 M.2 Mirroring Enablement Kit (4M17A60519):

- PCIe 2.0 x2 host interface (connects to the PCH)
- Based on the Marvell 88SE9230 6 Gbps SATA controller
- Supports one or two 6 Gbps SATA M.2 drives
- Support 42mm, 60mm and 80mm drive form factors (2242, 2260 and 2280 respectively)
- RAID functionality provided by the M.2 adapter
- RAID 1 by default; also supports RAID 0 and JBOD
- UEFI-based settings to enable/disable RAID mode and to review inventory
- Supports Secure Boot
- Adapter and drive firmware update using Lenovo firmware tools
- Management via I2C interface
- 7Y37A01093: No SED support
- 4M17A60519: Supports SED drive encryption

Features of the ThinkSystem M.2 Enablement Kit (7Y37A01092):

- 6 Gbps SATA host interface (connects to the PCH)
- Supports one 6 Gbps SATA M.2 drive
- Support 42mm, 60mm and 80mm drive form factors (2242, 2260 and 2280 respectively)
- Drive firmware update using Lenovo firmware tools
- Management via I2C interface
- VPD reporting of adapter inventory
- No support for SED drive encryption

SE350 4-bay M.2 adapters

The ThinkSystem SE350 M.2 SATA/NVMe 4-bay Data Drive Enablement Kit (4M17A37281) has the following features:

- Supports four SATA or four NVMe M.2 drives (no mixing of drive types)
- Support 42mm, 60mm, 80mm and 110mm drive form factors (2242, 2260, 2280 and 22110 respectively)
- For SATA drives, RAID 0, 1, 5, 10, provided by the PCH controller in the processor
- For NVMe, JBOD support only; no RAID support
- SED drive support
- Either 6Gbps SATA or PCIe 3.0 x1 interface to the drives depending on the drives installed
- Supports SED drive encryption

The ThinkSystem SE350 M.2 SATA 4-Bay Data RAID Mirroring Enablement Kit (4M17A37606) has the following features:

- Supports four SATA M.2 drives (NVMe drives not supported)
- Support 42mm, 60mm, 80mm and 110mm drive form factors (2242, 2260, 2280 and 22110 respectively)
- RAID support via two independent Marvell 88SE9230 6 Gbps SATA controllers
- Each controller connects to two M.2 drives, offering RAID-0 or RAID-1
- Also supports one M.2 drive in a non-RAID (JBOD) configuration
- Supports SED drive encryption

Tip: 2242, 2260, 2280 and 22110 are the industry terms for the M.2 drive dimensions. For example, 2280 corresponds to a drive that is 22mm wide and 80mm long.

Technical specifications of the drives

For the technical specifications of all M.2 drives, see the ThinkSystem SSD Portfolio:
<https://lenovopress.com/lp1261-lenovo-thinksystem-ssd-portfolio#term=%2522M.2%2522&availability=Available>

Performance data of NVMe drives: The performance numbers for NVMe drives listed in the table are based on a PCIe x4 connection to the processor, however, when installed in a Lenovo M.2 adapter, the NVMe drives only have a x2 or x1 connection. As a result, this performance data should only be used for comparative purposes.

Server support - Adapters

The following tables list the ThinkSystem servers that are compatible.

Table 5. Server support - Adapters (Part 1 of 4)

Part Number	Description	2S AMD V3				2S Intel V3				4S 8S Intel V3				Multi Node		GPU Rich			1S V3	
		SR635 V3 (7D9H / 7D9G)	SR655 V3 (7D9F / 7D9E)	SR645 V3 (7D9D / 7D9C)	SR665 V3 (7D9B / 7D9A)	ST650 V3 (7D7B / 7D7A)	SR630 V3 (7D72 / 7D73)	SR650 V3 (7D75 / 7D76)	SR850 V3 (7D97 / 7D96)	SR860 V3 (7D94 / 7D93)	SR950 V3 (7DC5 / 7DC4)	SD535 V3 (7DD8 / 7DD1)	SD530 V3 (7DDA / 7DD3)	SD550 V3 (7DD9 / 7DD2)	SR670 V2 (7Z22 / 7Z23)	SR675 V3 (7D9Q / 7D9R)	SR680a V3 (7DHE)	SR685a V3 (7DHC)	ST250 V3 (7DCF / 7DCE)	SR250 V3 (7DCM / 7DCL)
M.2 adapters with side-by-side design																				
4Y37A09739	ThinkSystem M.2 SATA 2-Bay RAID Adapter	N	N	N	N	N	N	N	N	N	N	N	N	N	Y	N	N	N	N	N
4Y37A09750	ThinkSystem M.2 NVMe 2-Bay RAID Adapter	Y	Y	Y	Y	Y	Y	Y	Y	Y	Y	N	N	N	Y	Y	N	Y	N	N
4Y37A90063	ThinkSystem M.2 RAID B540i-2i SATA/NVMe Adapter	Y	Y	Y	Y	N	Y	Y	N	N	N	Y	N	N	N	N	N	N	N	Y
4Y37A09738	ThinkSystem M.2 SATA/NVMe 2-Bay Enablement Kit	Y	Y	Y	N	Y	N	N	Y	Y	N	N	N	N	Y	Y	N	N	N	N
4Y37A79663	ThinkSystem M.2 SATA/x4 NVMe 2-Bay Adapter	Y	Y	Y	Y	N	Y	Y	Y	Y	N	N	N	N	N	Y	N	N	Y	Y
M.2 side-by-side adapter in a PCIe adapter bracket																				
4C57A85377	ThinkSystem M.2 SATA/NVMe 2-Bay Enablement Adapter	N	N	N	N	N	N	N	N	N	N	N	N	N	N	N	N	N	N	N
M.2 adapters with back-to-back design																				
7Y37A01092	ThinkSystem M.2 Enablement Kit	N	N	N	N	N	N	N	N	N	N	N	N	N	N	N	N	N	N	N
7Y37A01093	ThinkSystem M.2 with Mirroring Enablement Kit	N	N	N	N	N	N	N	N	N	N	N	N	N	N	N	N	N	N	N
4M17A60519	ThinkSystem SE350 M.2 Mirroring Enablement Kit	N	N	N	N	N	N	N	N	N	N	N	N	N	N	N	N	N	N	N
M.2 4-bay adapters (SE350 only)																				
4M17A37281	ThinkSystem SE350 M.2 SATA/NVMe 4-bay Data Drive Enablement Kit	N	N	N	N	N	N	N	N	N	N	N	N	N	N	N	N	N	N	N
4M17A37606	ThinkSystem SE350 M.2 SATA 4-Bay Data RAID Mirroring Enablement Kit	N	N	N	N	N	N	N	N	N	N	N	N	N	N	N	N	N	N	N
M.2 thermal kit (some servers)																				
4XH7A08791	ThinkSystem SR650/SR550/SR590 M.2 Thermal Kit	N	N	N	N	N	N	N	N	N	N	N	N	N	N	N	N	N	N	N

Table 6. Server support - Adapters (Part 2 of 4)

Part Number	Description	Edge					Super Computing					1S Intel V2		2S Intel V2			
		SE350 (7Z46 / 7D1X)	SE350 V2 (7DA9)	SE360 V2 (7DAM)	SE450 (7D8T)	SE455 V3 (7DBY)	SD665 V3 (7D9P)	SD665-N V3 (7DAZ)	SD650 V3 (7D7M)	SD650-I V3 (7D7L)	SD650-N V3 (7D7N)	ST150 V2 (7D8K / 7D8J)	ST250 V2 (7D8G / 7D8F)	SR250 V2 (7D7R / 7D7Q)	ST650 V2 (7Z75 / 7Z74)	SR630 V2 (7Z70 / 7Z71)	SR650 V2 (7Z72 / 7Z73)
M.2 adapters with side-by-side design																	
4Y37A09739	ThinkSystem M.2 SATA 2-Bay RAID Adapter	N	N	N	N	N	N	N	N	N	N	N	N	N	Y	Y	Y
4Y37A09750	ThinkSystem M.2 NVMe 2-Bay RAID Adapter	N	N	N	N	N	N	N	N	N	N	N	N	N	Y	Y	Y
4Y37A90063	ThinkSystem M.2 RAID B540i-2i SATA/NVMe Adapter	N	N	N	N	Y	N	N	N	N	N	N	N	N	N	N	N
4Y37A09738	ThinkSystem M.2 SATA/NVMe 2-Bay Enablement Kit	N	N	N	Y	N	N	N	N	N	N	N	N	N	Y	Y	Y
4Y37A79663	ThinkSystem M.2 SATA/x4 NVMe 2-Bay Adapter	N	N	N	N	N	N	N	N	N	N	N	N	N	N	N	N
M.2 side-by-side adapter in a PCIe adapter bracket																	
4C57A85377	ThinkSystem M.2 SATA/NVMe 2-Bay Enablement Adapter	N	N	N	N	N	N	N	N	N	N	N	Y	Y	N	N	N
M.2 adapters with back-to-back design																	
7Y37A01092	ThinkSystem M.2 Enablement Kit	Y	N	N	N	N	N	N	N	N	N	N	N	N	N	N	N
7Y37A01093	ThinkSystem M.2 with Mirroring Enablement Kit	N	N	N	N	N	N	N	N	N	N	N	N	N	N	N	N
4M17A60519	ThinkSystem SE350 M.2 Mirroring Enablement Kit	Y	N	N	N	N	N	N	N	N	N	N	N	N	N	N	N
M.2 4-bay adapters (SE350 only)																	
4M17A37281	ThinkSystem SE350 M.2 SATA/NVMe 4-bay Data Drive Enablement Kit	Y	N	N	N	N	N	N	N	N	N	N	N	N	N	N	N
4M17A37606	ThinkSystem SE350 M.2 SATA 4-Bay Data RAID Mirroring Enablement Kit	Y	N	N	N	N	N	N	N	N	N	N	N	N	N	N	N
M.2 thermal kit (some servers)																	
4XH7A08791	ThinkSystem SR650/SR550/SR590 M.2 Thermal Kit	N	N	N	N	N	N	N	N	N	N	N	N	N	N	N	N

Table 7. Server support - Adapters (Part 3 of 4)

Part Number	Description	AMD V1				Dense V2				4S V2	8S	4S V1		1S Intel V1					
		SR635 (7Y98 / 7Y99)	SR655 (7Y00 / 7Z01)	SR655 Client OS	SR645 (7D2Y / 7D2X)	SR665 (7D2W / 7D2V)	SD630 V2 (7D1K)	SD650 V2 (7D1M)	SD650-N V2 (7D1N)	SN550 V2 (7Z69)	SR850 V2 (7D31 / 7D32)	SR860 V2 (7Z59 / 7Z60)	SR950 (7X11 / 7X12)	SR850 (7X18 / 7X19)	SR850P (7D2F / 2D2G)	SR860 (7X69 / 7X70)	ST50 (7Y48 / 7Y50)	ST250 (7Y45 / 7Y46)	SR150 (7Y54)
M.2 adapters with side-by-side design																			
4Y37A09739	ThinkSystem M.2 SATA 2-Bay RAID Adapter	Y	Y	N	Y	Y	N	N	N	N	N	Y	N	N	N	N	N	N	N
4Y37A09750	ThinkSystem M.2 NVMe 2-Bay RAID Adapter	N	N	N	Y	Y	N	N	N	N	N	Y	N	N	N	N	N	N	N
4Y37A90063	ThinkSystem M.2 RAID B540i-2i SATA/NVMe Adapter	N	N	N	N	N	N	N	N	N	N	N	N	N	N	N	N	N	N
4Y37A09738	ThinkSystem M.2 SATA/NVMe 2-Bay Enablement Kit	Y	Y	Y	Y	Y	N	N	N	N	N	Y	N	N	N	N	N	N	N
4Y37A79663	ThinkSystem M.2 SATA/x4 NVMe 2-Bay Adapter	N	N	N	N	N	N	N	N	N	N	N	N	N	N	N	N	N	N
M.2 side-by-side adapter in a PCIe adapter bracket																			
4C57A85377	ThinkSystem M.2 SATA/NVMe 2-Bay Enablement Adapter	N	N	N	N	N	N	N	N	N	N	N	N	N	N	N	N	N	N
M.2 adapters with back-to-back design																			
7Y37A01092	ThinkSystem M.2 Enablement Kit	N	N	N	N	N	N	N	N	N	N	N	Y	Y	Y	Y	N	N	N
7Y37A01093	ThinkSystem M.2 with Mirroring Enablement Kit	N	N	N	N	N	N	N	N	N	N	N	Y	Y	Y	Y	N	N	N
4M17A60519	ThinkSystem SE350 M.2 Mirroring Enablement Kit	N	N	N	N	N	N	N	N	N	N	N	N	N	N	N	N	N	N
M.2 4-bay adapters (SE350 only)																			
4M17A37281	ThinkSystem SE350 M.2 SATA/NVMe 4-bay Data Drive Enablement Kit	N	N	N	N	N	N	N	N	N	N	N	N	N	N	N	N	N	N
4M17A37606	ThinkSystem SE350 M.2 SATA 4-Bay Data RAID Mirroring Enablement Kit	N	N	N	N	N	N	N	N	N	N	N	N	N	N	N	N	N	N
M.2 thermal kit (some servers)																			
4XH7A08791	ThinkSystem SR650/SR550/SR590 M.2 Thermal Kit	N	N	N	N	N	N	N	N	N	N	N	N	N	N	N	N	N	N

Table 8. Server support - Adapters (Part 4 of 4)

Part Number	Description	2S Intel V1								Dense V1			
		ST550 (7X09 / 7X10)	SR530 (7X07 / 7X08)	SR550 (7X03 / 7X04)	SR570 (7Y02 / 7Y03)	SR590 (7X98 / 7X99)	SR630 (7X01 / 7X02)	SR650 (7X05 / 7X06)	SR670 (7Y36 / 7Y37)	SD530 (7X21)	SD650 (7X58)	SN550 (7X16)	SN650 (7X15)
M.2 adapters with side-by-side design													
4Y37A09739	ThinkSystem M.2 SATA 2-Bay RAID Adapter	N	N	N	N	N	N	N	N	N	N	N	N
4Y37A09750	ThinkSystem M.2 NVMe 2-Bay RAID Adapter	N	N	N	N	N	N	N	N	N	N	N	N
4Y37A90063	ThinkSystem M.2 RAID B540i-2i SATA/NVMe Adapter	N	N	N	N	N	N	N	N	N	N	N	N
4Y37A09738	ThinkSystem M.2 SATA/NVMe 2-Bay Enablement Kit	N	N	N	N	N	N	N	N	N	N	N	N
4Y37A79663	ThinkSystem M.2 SATA/x4 NVMe 2-Bay Adapter	N	N	N	N	N	N	N	N	N	N	N	N
M.2 side-by-side adapter in a PCIe adapter bracket													
4C57A85377	ThinkSystem M.2 SATA/NVMe 2-Bay Enablement Adapter	N	N	N	N	N	N	N	N	N	N	N	N
M.2 adapters with back-to-back design													
7Y37A01092	ThinkSystem M.2 Enablement Kit	Y	Y	Y	Y	Y	Y	Y	Y	Y	N	N	Y
7Y37A01093	ThinkSystem M.2 with Mirroring Enablement Kit	Y	Y	Y	Y	N	Y	Y	Y	Y	N	N	Y
4M17A60519	ThinkSystem SE350 M.2 Mirroring Enablement Kit	N	N	N	N	N	N	N	N	N	N	N	N
M.2 4-bay adapters (SE350 only)													
4M17A37281	ThinkSystem SE350 M.2 SATA/NVMe 4-bay Data Drive Enablement Kit	N	N	N	N	N	N	N	N	N	N	N	N
4M17A37606	ThinkSystem SE350 M.2 SATA 4-Bay Data RAID Mirroring Enablement Kit	N	N	N	N	N	N	N	N	N	N	N	N
M.2 thermal kit (some servers)													
4XH7A08791	ThinkSystem SR650/SR550/SR590 M.2 Thermal Kit	N	N	Y	N	N	N	Y	N	N	N	N	N

Server support - Drives

The following tables list the server support for M.2 drives:

- [SATA drives](#)
- [PCIe 4.0 NVMe drives](#)
- [PCIe 3.0 NVMe drives](#)

SATA drives

The following tables list the ThinkSystem servers that are compatible with SATA M.2 drives.

Table 9. Server support - SATA Drives (Part 1 of 4)

Part Number	Description	2S AMD V3				2S Intel V3				4S 8S Intel V3				Multi Node				GPU Rich				1S V3	
		SR635 V3 (7D9H / 7D9G)	SR655 V3 (7D9F / 7D9E)	SR645 V3 (7D9D / 7D9C)	SR665 V3 (7D9B / 7D9A)	ST650 V3 (7D7B / 7D7A)	SR630 V3 (7D72 / 7D73)	SR650 V3 (7D75 / 7D76)	SR850 V3 (7D97 / 7D96)	SR860 V3 (7D94 / 7D93)	SR950 V3 (7DC5 / 7DC4)	SD535 V3 (7DD8 / 7DD1)	SD530 V3 (7DDA / 7DD3)	SD550 V3 (7DD9 / 7DD2)	SR670 V2 (7Z22 / 7Z23)	SR675 V3 (7D9Q / 7D9R)	SR680a V3 (7DHE)	SR685a V3 (7DHC)	ST250 V3 (7DCF / 7DCE)	SR250 V3 (7DCM / 7DCL)			
M.2 SSDs - 6 Gb SATA - Read Intensive/Entry (<3 DWPD)																							
4XB7A89422	ThinkSystem M.2 ER3 240GB Read Intensive SATA 6Gb NHS SSD	Y	Y	Y	Y	Y	Y	Y	Y	Y	N	N	N	N	Y	N	N	N	Y	Y			
4XB7A90049	ThinkSystem M.2 ER3 480GB Read Intensive SATA 6Gb NHS SSD	Y	Y	Y	Y	Y	Y	Y	Y	Y	N	N	N	N	Y	N	N	N	Y	Y			
4XB7A90230	ThinkSystem M.2 ER3 960GB Read Intensive SATA 6Gb NHS SSD	Y	Y	Y	Y	Y	Y	Y	Y	Y	N	N	N	N	Y	N	N	N	Y	Y			
4XB7A90105	ThinkSystem M.2 ER2 240GB Read Intensive SATA 6Gb NHS SSD	N	N	N	N	N	N	N	N	N	N	N	N	N	N	N	N	N	N	N			
4XB7A90106	ThinkSystem M.2 ER2 480GB Read Intensive SATA 6Gb NHS SSD	N	N	N	N	N	N	N	N	N	N	N	N	N	N	N	N	N	N	N			
4XB7A82286	ThinkSystem M.2 5400 PRO 240GB Read Intensive SATA 6Gb NHS SSD	Y	Y	Y	Y	Y	Y	Y	Y	Y	N	Y	Y	Y	Y	N	N	N	Y	Y			
4XB7A82287	ThinkSystem M.2 5400 PRO 480GB Read Intensive SATA 6Gb NHS SSD	Y	Y	Y	Y	Y	Y	Y	Y	Y	N	Y	Y	Y	Y	N	N	N	Y	Y			
4XB7A82288	ThinkSystem M.2 5400 PRO 960GB Read Intensive SATA 6Gb NHS SSD	Y	Y	Y	Y	Y	Y	Y	Y	Y	N	Y	Y	Y	Y	N	N	N	Y	Y			
7N47A00129	ThinkSystem M.2 32GB SATA 6Gbps Non-Hot Swap SSD	N	N	N	N	N	N	N	N	N	N	N	N	N	Y	N	N	N	N	N			
7N47A00130	ThinkSystem M.2 128GB SATA 6Gbps Non-Hot Swap SSD	Y	Y	Y	Y	Y	Y	Y	Y	Y	N	N	N	N	Y	N	N	N	N	N			
4XB7A17073	ThinkSystem M.2 5300 480GB SATA 6Gbps Non-Hot Swap SSD	N	N	N	N	N	N	N	N	N	N	N	N	N	Y	N	N	N	N	N			
4XB7A17212	ThinkSystem M.2 5300 480GB SATA 6Gbps Non-Hot Swap SSD SED	N	N	N	N	N	N	N	N	N	N	N	N	N	N	N	N	N	N	N			
4XB7A17074	ThinkSystem M.2 5300 960GB SATA 6Gbps Non-Hot Swap SSD	N	N	N	N	N	N	N	N	N	N	N	N	N	Y	N	N	N	N	N			

Part Number	Description	2S AMD V3			2S Intel V3			4S 8S Intel V3			Multi Node			GPU Rich			1S V3			
		SR635 V3 (7D9H / 7D9G)	SR655 V3 (7D9F / 7D9E)	SR645 V3 (7D9D / 7D9C)	SR665 V3 (7D9B / 7D9A)	ST650 V3 (7D7B / 7D7A)	SR630 V3 (7D72 / 7D73)	SR650 V3 (7D75 / 7D76)	SR850 V3 (7D97 / 7D96)	SR860 V3 (7D94 / 7D93)	SR950 V3 (7DC5 / 7DC4)	SD535 V3 (7DD8 / 7DD1)	SD530 V3 (7DDA / 7DD3)	SD550 V3 (7DD9 / 7DD2)	SR670 V2 (7Z22 / 7Z23)	SR675 V3 (7D9Q / 7D9R)	SR680a V3 (7DHE)	SR685a V3 (7DHC)	ST250 V3 (7DCF / 7DCE)	SR250 V3 (7DCM / 7DCL)
4XB7A38180	ThinkSystem M.2 5300 1.92TB SATA 6Gbps Non-Hot Swap SSD	N	N	N	N	N	N	N	N	N	N	N	N	N	N	N	N	N	N	N
4XB7A39422	ThinkSystem M.2 120GB Industrial A600i SATA SSD	N	N	N	N	N	N	N	N	N	N	N	N	N	N	N	N	N	N	N
4XB7A37270	ThinkSystem M.2 120GB Industrial A600i SATA SED SSD	N	N	N	N	N	N	N	N	N	N	N	N	N	N	N	N	N	N	N
4XB7A39423	ThinkSystem M.2 480GB Industrial A600i SATA SSD	N	N	N	N	N	N	N	N	N	N	N	N	N	N	N	N	N	N	N
4XB7A37271	ThinkSystem M.2 480GB Industrial A600i SATA SED SSD	N	N	N	N	N	N	N	N	N	N	N	N	N	N	N	N	N	N	N
4XB7A39424	ThinkSystem M.2 800GB Industrial A600i SATA SSD	N	N	N	N	N	N	N	N	N	N	N	N	N	N	N	N	N	N	N
4XB7A37272	ThinkSystem M.2 800GB Industrial A600i SATA SED SSD	N	N	N	N	N	N	N	N	N	N	N	N	N	N	N	N	N	N	N

Table 10. Server support - SATA Drives (Part 2 of 4)

Part Number	Description	Edge			Super Computing					1S Intel V2		2S Intel V2				
		SE350 (7Z46 / 7D1X)	SE350 V2 (7DA9)	SE360 V2 (7DAM)	SE450 (7D8T)	SE455 V3 (7DBY)	SD665 V3 (7D9P)	SD665-N V3 (7DAZ)	SD650 V3 (7D7M)	SD650-I V3 (7D7L)	SD650-N V3 (7D7N)	ST150 V2 (7D8K / 7D8J)	ST250 V2 (7D8G / 7D8F)	SR250 V2 (7D7R / 7D7Q)	ST650 V2 (7Z75 / 7Z74)	SR630 V2 (7Z70 / 7Z71)
M.2 SSDs - 6 Gb SATA - Read Intensive/Entry (<3 DWPD)																
4XB7A89422	ThinkSystem M.2 ER3 240GB Read Intensive SATA 6Gb NHS SSD	Y	N	N	Y	N	N	N	N	N	N	Y	Y	Y	Y	Y
4XB7A90049	ThinkSystem M.2 ER3 480GB Read Intensive SATA 6Gb NHS SSD	Y	N	N	Y	N	N	N	N	N	N	Y	Y	Y	Y	Y
4XB7A90230	ThinkSystem M.2 ER3 960GB Read Intensive SATA 6Gb NHS SSD	Y	N	N	Y	N	N	N	N	N	N	Y	Y	Y	Y	Y
4XB7A90105	ThinkSystem M.2 ER2 240GB Read Intensive SATA 6Gb NHS SSD	Y	N	N	N	N	N	N	N	N	N	Y	Y	Y	Y	Y

Part Number	Description	Edge					Super Computing					1S Intel V2		2S Intel V2		
		SE350 (7Z46 / 7D1X)	SE350 V2 (7DA9)	SE360 V2 (7DAM)	SE450 (7D8T)	SE455 V3 (7DBY)	SD665 V3 (7D9P)	SD665-N V3 (7DAZ)	SD650 V3 (7D7M)	SD650-I V3 (7D7L)	SD650-N V3 (7D7N)	ST50 V2 (7D8K / 7D8J)	ST250 V2 (7D8G / 7D8F)	SR250 V2 (7D7R / 7D7Q)	ST650 V2 (7Z75 / 7Z74)	SR630 V2 (7Z70 / 7Z71)
4XB7A90106	ThinkSystem M.2 ER2 480GB Read Intensive SATA 6Gb NHS SSD	Y	N	N	N	N	N	N	N	N	N	Y	Y	Y	Y	Y
4XB7A82286	ThinkSystem M.2 5400 PRO 240GB Read Intensive SATA 6Gb NHS SSD	Y	N	N	Y	Y	N	N	N	N	N	Y	Y	Y	Y	Y
4XB7A82287	ThinkSystem M.2 5400 PRO 480GB Read Intensive SATA 6Gb NHS SSD	Y	N	N	Y	Y	N	N	N	N	N	Y	Y	Y	Y	Y
4XB7A82288	ThinkSystem M.2 5400 PRO 960GB Read Intensive SATA 6Gb NHS SSD	Y	N	N	Y	Y	N	N	N	N	N	N	Y	Y	Y	Y
7N47A00129	ThinkSystem M.2 32GB SATA 6Gbps Non-Hot Swap SSD	N	N	N	N	N	N	N	N	N	N	N	N	Y	Y	Y
7N47A00130	ThinkSystem M.2 128GB SATA 6Gbps Non-Hot Swap SSD	Y	N	N	Y	Y	N	N	N	N	N	Y	Y	Y	Y	Y
4XB7A17073	ThinkSystem M.2 5300 480GB SATA 6Gbps Non-Hot Swap SSD	Y	N	N	Y	N	N	N	N	N	N	Y	Y	Y	Y	Y
4XB7A17212	ThinkSystem M.2 5300 480GB SATA 6Gbps Non-Hot Swap SSD SED	N	N	N	Y	N	N	N	N	N	N	N	N	N	N	N
4XB7A17074	ThinkSystem M.2 5300 960GB SATA 6Gbps Non-Hot Swap SSD	Y	N	N	Y	N	N	N	N	N	N	Y	Y	Y	Y	Y
4XB7A38180	ThinkSystem M.2 5300 1.92TB SATA 6Gbps Non-Hot Swap SSD	Y	N	N	N	N	N	N	N	N	N	N	N	N	N	N
4XB7A39422	ThinkSystem M.2 120GB Industrial A600i SATA SSD	Y	N	N	N	N	N	N	N	N	N	N	N	N	N	N
4XB7A37270	ThinkSystem M.2 120GB Industrial A600i SATA SED SSD	Y	N	N	N	N	N	N	N	N	N	N	N	N	N	N
4XB7A39423	ThinkSystem M.2 480GB Industrial A600i SATA SSD	Y	N	N	N	N	N	N	N	N	N	N	N	N	N	N
4XB7A37271	ThinkSystem M.2 480GB Industrial A600i SATA SED SSD	Y	N	N	N	N	N	N	N	N	N	N	N	N	N	N
4XB7A39424	ThinkSystem M.2 800GB Industrial A600i SATA SSD	Y	N	N	N	N	N	N	N	N	N	N	N	N	N	N
4XB7A37272	ThinkSystem M.2 800GB Industrial A600i SATA SED SSD	Y	N	N	N	N	N	N	N	N	N	N	N	N	N	N

Table 11. Server support - SATA Drives (Part 3 of 4)

Part Number	Description	AMD V1				Dense V2				4S V2	8S	4S V1		1S Intel V1						
		SR635 (7Y98 / 7Y99)	SR655 (7Y00 / 7Z01)	SR655 Client OS	SR645 (7D2Y / 7D2X)	SR665 (7D2W / 7D2V)	SD630 V2 (7D1K)	SD650 V2 (7D1M)	SD650-N V2 (7D1N)	SN550 V2 (7Z69)	SR850 V2 (7D31 / 7D32)	SR860 V2 (7Z59 / 7Z60)	SR950 (7X11 / 7X12)	SR850 (7X18 / 7X19)	SR850P (7D2F / 2D2G)	SR860 (7X69 / 7X70)	ST50 (7Y48 / 7Y50)	ST250 (7Y45 / 7Y46)	SR150 (7Y54)	SR250 (7Y52 / 7Y51)
M.2 SSDs - 6 Gb SATA - Read Intensive/Entry (<3 DWPD)																				
4XB7A89422	ThinkSystem M.2 ER3 240GB Read Intensive SATA 6Gb NHS SSD	Y	Y	Y	Y	Y	Y	N	N	N	N	Y	N	N	N	N	N	N	N	
4XB7A90049	ThinkSystem M.2 ER3 480GB Read Intensive SATA 6Gb NHS SSD	Y	Y	Y	Y	Y	Y	N	N	N	N	Y	N	N	N	N	N	N	N	
4XB7A90230	ThinkSystem M.2 ER3 960GB Read Intensive SATA 6Gb NHS SSD	Y	Y	Y	Y	Y	Y	N	N	N	N	Y	N	N	N	N	N	N	N	
4XB7A90105	ThinkSystem M.2 ER2 240GB Read Intensive SATA 6Gb NHS SSD	Y	Y	Y	Y	Y	Y	N	N	N	N	Y	N	N	N	N	N	N	N	
4XB7A90106	ThinkSystem M.2 ER2 480GB Read Intensive SATA 6Gb NHS SSD	Y	Y	Y	Y	Y	Y	N	N	N	N	Y	N	N	N	N	N	N	N	
4XB7A82286	ThinkSystem M.2 5400 PRO 240GB Read Intensive SATA 6Gb NHS SSD	Y	Y	N	Y	Y	Y	Y	Y	N	N	Y	Y	Y	Y	Y	N	Y	N	Y
4XB7A82287	ThinkSystem M.2 5400 PRO 480GB Read Intensive SATA 6Gb NHS SSD	Y	Y	N	Y	Y	Y	Y	Y	N	N	Y	Y	Y	Y	Y	N	Y	N	Y
4XB7A82288	ThinkSystem M.2 5400 PRO 960GB Read Intensive SATA 6Gb NHS SSD	Y	Y	N	Y	Y	Y	Y	Y	N	N	N	N	N	N	N	N	Y	N	Y
7N47A00129	ThinkSystem M.2 32GB SATA 6Gbps Non-Hot Swap SSD	Y	Y	Y	Y	Y	N	N	N	N	N	Y	Y	Y	Y	Y	N	Y	Y	Y
7N47A00130	ThinkSystem M.2 128GB SATA 6Gbps Non-Hot Swap SSD	Y	Y	Y	Y	Y	N	N	N	N	N	Y	Y	Y	Y	Y	N	Y	Y	Y
4XB7A17073	ThinkSystem M.2 5300 480GB SATA 6Gbps Non-Hot Swap SSD	Y	Y	Y	Y	Y	Y	N	N	N	N	Y	Y	Y	Y	N	N	N	Y	Y
4XB7A17212	ThinkSystem M.2 5300 480GB SATA 6Gbps Non-Hot Swap SSD SED	N	N	N	N	N	N	N	N	N	N	N	N	N	N	N	N	N	N	N
4XB7A17074	ThinkSystem M.2 5300 960GB SATA 6Gbps Non-Hot Swap SSD	Y	Y	Y	Y	Y	Y	N	N	N	N	N	N	N	N	N	N	N	N	N

Part Number	Description	AMD V1				Dense V2				4S V2	8S	4S V1		1S Intel V1						
		SR635 (7Y98 / 7Y99)	SR655 (7Y00 / 7Z01)	SR655 Client OS	SR645 (7D2Y / 7D2X)	SR665 (7D2W / 7D2V)	SD630 V2 (7D1K)	SD650 V2 (7D1M)	SD650-N V2 (7D1N)	SN550 V2 (7Z69)	SR850 V2 (7D31 / 7D32)	SR860 V2 (7Z59 / 7Z60)	SR950 (7X11 / 7X12)	SR850 (7X18 / 7X19)	SR850P (7D2F / 2D2G)	SR860 (7X69 / 7X70)	ST50 (7Y48 / 7Y50)	ST250 (7Y45 / 7Y46)	SR150 (7Y54)	SR250 (7Y52 / 7Y51)
4XB7A38180	ThinkSystem M.2 5300 1.92TB SATA 6Gbps Non-Hot Swap SSD	N	N	N	N	N	N	N	N	N	N	N	N	N	N	N	N	N	N	N
4XB7A39422	ThinkSystem M.2 120GB Industrial A600i SATA SSD	N	N	N	N	N	N	N	N	N	N	N	N	N	N	N	N	N	N	N
4XB7A37270	ThinkSystem M.2 120GB Industrial A600i SATA SED SSD	N	N	N	N	N	N	N	N	N	N	N	N	N	N	N	N	N	N	N
4XB7A39423	ThinkSystem M.2 480GB Industrial A600i SATA SSD	N	N	N	N	N	N	N	N	N	N	N	N	N	N	N	N	N	N	N
4XB7A37271	ThinkSystem M.2 480GB Industrial A600i SATA SED SSD	N	N	N	N	N	N	N	N	N	N	N	N	N	N	N	N	N	N	N
4XB7A39424	ThinkSystem M.2 800GB Industrial A600i SATA SSD	N	N	N	N	N	N	N	N	N	N	N	N	N	N	N	N	N	N	N
4XB7A37272	ThinkSystem M.2 800GB Industrial A600i SATA SED SSD	N	N	N	N	N	N	N	N	N	N	N	N	N	N	N	N	N	N	N

Table 12. Server support - SATA Drives (Part 4 of 4)

Part Number	Description	2S Intel V1							Dense V1				
		ST550 (7X09 / 7X10)	SR530 (7X07 / 7X08)	SR550 (7X03 / 7X04)	SR570 (7Y02 / 7Y03)	SR590 (7X98 / 7X99)	SR630 (7X01 / 7X02)	SR650 (7X05 / 7X06)	SR670 (7Y36 / 7Y37)	SD530 (7X21)	SD650 (7X58)	SN550 (7X16)	SN850 (7X15)
M.2 SSDs - 6 Gb SATA - Read Intensive/Entry (<3 DDPD)													
4XB7A89422	ThinkSystem M.2 ER3 240GB Read Intensive SATA 6Gb NHS SSD	N	N	N	N	N	N	N	N	N	N	N	N
4XB7A90049	ThinkSystem M.2 ER3 480GB Read Intensive SATA 6Gb NHS SSD	N	N	N	N	N	N	N	N	N	N	N	N
4XB7A90230	ThinkSystem M.2 ER3 960GB Read Intensive SATA 6Gb NHS SSD	N	N	N	N	N	N	N	N	N	N	N	N
4XB7A90105	ThinkSystem M.2 ER2 240GB Read Intensive SATA 6Gb NHS SSD	N	N	N	N	N	Y	Y	N	N	N	N	N
4XB7A90106	ThinkSystem M.2 ER2 480GB Read Intensive SATA 6Gb NHS SSD	N	N	N	N	N	Y	Y	N	N	N	N	N

Part Number	Description	2S Intel V1								Dense V1			
		ST550 (7X09 / 7X10)	SR530 (7X07 / 7X08)	SR550 (7X03 / 7X04)	SR570 (7Y02 / 7Y03)	SR590 (7X98 / 7X99)	SR630 (7X01 / 7X02)	SR650 (7X05 / 7X06)	SR670 (7Y36 / 7Y37)	SD530 (7X21)	SD650 (7X58)	SN550 (7X16)	SN850 (7X15)
4XB7A82286	ThinkSystem M.2 5400 PRO 240GB Read Intensive SATA 6Gb NHS SSD	Y	Y	Y	Y	N	Y	Y	Y	Y	N	N	Y
4XB7A82287	ThinkSystem M.2 5400 PRO 480GB Read Intensive SATA 6Gb NHS SSD	Y	Y	Y	Y	Y	Y	Y	Y	Y	N	N	Y
4XB7A82288	ThinkSystem M.2 5400 PRO 960GB Read Intensive SATA 6Gb NHS SSD	N	N	N	N	N	N	N	N	N	N	N	N
7N47A00129	ThinkSystem M.2 32GB SATA 6Gbps Non-Hot Swap SSD	Y	Y	Y	Y	Y	Y	Y	N	Y	N	N	Y
7N47A00130	ThinkSystem M.2 128GB SATA 6Gbps Non-Hot Swap SSD	Y	Y	Y	Y	Y	Y	Y	Y	Y	N	N	Y
4XB7A17073	ThinkSystem M.2 5300 480GB SATA 6Gbps Non-Hot Swap SSD	Y	Y	Y ¹	N	N	Y	N	N	N	N	N	Y
4XB7A17212	ThinkSystem M.2 5300 480GB SATA 6Gbps Non-Hot Swap SSD SED	N	N	N	N	N	N	N	N	N	N	N	N
4XB7A17074	ThinkSystem M.2 5300 960GB SATA 6Gbps Non-Hot Swap SSD	N	N	N	N	N	N	N	N	N	N	N	N
4XB7A38180	ThinkSystem M.2 5300 1.92TB SATA 6Gbps Non-Hot Swap SSD	N	N	N	N	N	N	N	N	N	N	N	N
4XB7A39422	ThinkSystem M.2 120GB Industrial A600i SATA SSD	N	N	N	N	N	N	N	N	N	N	N	N
4XB7A37270	ThinkSystem M.2 120GB Industrial A600i SATA SED SSD	N	N	N	N	N	N	N	N	N	N	N	N
4XB7A39423	ThinkSystem M.2 480GB Industrial A600i SATA SSD	N	N	N	N	N	N	N	N	N	N	N	N
4XB7A37271	ThinkSystem M.2 480GB Industrial A600i SATA SED SSD	N	N	N	N	N	N	N	N	N	N	N	N
4XB7A39424	ThinkSystem M.2 800GB Industrial A600i SATA SSD	N	N	N	N	N	N	N	N	N	N	N	N
4XB7A37272	ThinkSystem M.2 800GB Industrial A600i SATA SED SSD	N	N	N	N	N	N	N	N	N	N	N	N

1. The use of a 5100 or 5300 M.2 drive in the SR550, SR590 and SR650 may require that the M.2 SSD Thermal Kit (4XH7A08791) also be installed. The thermal kit contains an air baffle that ensures proper cooling of the M.2 drive. See the [SR550](#), [SR590](#) and [SR650](#) product guides for specifics.

PCIe 4.0 NVMe drives

The following tables list the ThinkSystem servers that are compatible with NVMe M.2 drives.

Table 13. Server support - PCIe 4.0 NVMe Drives (Part 1 of 4)

Part Number	Description	2S AMD V3				2S Intel V3				4S 8S Intel V3				Multi Node			GPU Rich			1S V3
		SR635 V3 (7D9H / 7D9G)	SR655 V3 (7D9F / 7D9E)	SR645 V3 (7D9D / 7D9C)	SR665 V3 (7D9B / 7D9A)	ST650 V3 (7D7B / 7D7A)	SR630 V3 (7D72 / 7D73)	SR650 V3 (7D75 / 7D76)	SR850 V3 (7D97 / 7D96)	SR860 V3 (7D94 / 7D93)	SR950 V3 (7DC5 / 7DC4)	SD535 V3 (7DD8 / 7DD1)	SD530 V3 (7DDA / 7DD3)	SD550 V3 (7DD9 / 7DD2)	SR670 V2 (7Z22 / 7Z23)	SR675 V3 (7D9Q / 7D9R)	SR680a V3 (7DHE)	SR685a V3 (7DHC)	ST250 V3 (7DCF / 7DCE)	SR250 V3 (7DCM / 7DCL)
M.2 SSDs - PCIe 4.0 NVMe - Mixed Use/Mainstream (3-5 DWPD)																				
4XB7A84603	ThinkSystem M.2 7450 MAX 800GB Mixed Use NVMe PCIe 4.0 x4 NHS SSD	N	N	N	N	N	N	N	N	N	N	N	N	N	Y	N	N	N	N	
4XB7A82676	ThinkSystem M.2 7450 MAX 800GB Mixed Use NVMe PCIe 4.0 x4 NHS SSD (with Heatsink)	N	N	N	N	N	N	N	N	N	N	N	N	N	N	N	N	N	N	
M.2 SSDs - PCIe 4.0 NVMe - Read Intensive/Entry (<3 DWPD)																				
4XB7A90102	ThinkSystem M.2 PM9A3 960GB Read Intensive NVMe PCIe 4.0 x4 NHS SSD	Y	Y	Y	Y	N	Y	Y	Y	Y	Y	Y	Y	Y	Y	Y	Y	N	N	
4XB7A90103	ThinkSystem M.2 PM9A3 1.92TB Read Intensive NVMe PCIe 4.0 x4 NHS SSD	N	N	N	N	N	N	N	N	N	Y	Y	Y	Y	Y	N	N	N	N	
4XB7A90104	ThinkSystem M.2 PM9A3 3.84TB Read Intensive NVMe PCIe 4.0 x4 NHS SSD	N	N	N	N	N	N	N	N	N	N	N	N	Y	N	N	N	N	N	
4XB7A82636	ThinkSystem M.2 7450 PRO 480GB Read Intensive NVMe PCIe 4.0 x4 NHS SSD	N	N	N	N	N	N	N	Y	Y	Y	Y	Y	N	Y	N	N	N	N	
4XB7A13999	ThinkSystem M.2 7450 PRO 960GB Read Intensive NVMe PCIe 4.0 x4 NHS SSD	Y	Y	Y	Y	Y	Y	Y	Y	Y	Y	Y	N	Y	Y	N	N	N	N	
4XB7A14000	ThinkSystem M.2 7450 PRO 1.92TB Read Intensive Entry NVMe PCIe 4.0 x4 NHS SSD	N	N	N	N	N	N	N	N	N	N	Y	Y	N	Y	Y	N	N	N	
4XB7A84604	ThinkSystem M.2 7450 PRO 3.84TB Read Intensive NVMe PCIe 4.0 x4 NHS SSD	N	N	N	N	N	N	N	N	N	N	N	N	Y	N	N	N	N	N	
4XB7A83139	ThinkSystem M.2 7450 PRO 480GB Read Intensive NVMe PCIe 4.0 x4 NHS SSD (with Heatsink)	N	N	N	N	N	N	N	N	N	Y	N	Y	N	N	N	N	N	N	
4XB7A82674	ThinkSystem M.2 7450 PRO 960GB Read Intensive NVMe PCIe 4.0 x4 NHS SSD (with Heatsink)	N	N	N	N	N	N	N	N	N	N	Y	N	Y	N	N	N	N	N	

Part Number	Description	2S AMD V3				2S Intel V3				4S 8S Intel V3				Multi Node		GPU Rich		1S V3		
		SR635 V3 (7D9H / 7D9G)	SR655 V3 (7D9F / 7D9E)	SR645 V3 (7D9D / 7D9C)	SR665 V3 (7D9B / 7D9A)	ST650 V3 (7D7B / 7D7A)	SR630 V3 (7D72 / 7D73)	SR650 V3 (7D75 / 7D76)	SR850 V3 (7D97 / 7D96)	SR860 V3 (7D94 / 7D93)	SR950 V3 (7DC5 / 7DC4)	SD535 V3 (7DD8 / 7DD1)	SD530 V3 (7DDA / 7DD3)	SD550 V3 (7DD9 / 7DD2)	SR670 V2 (7Z22 / 7Z23)	SR675 V3 (7D9Q / 7D9R)	SR680a V3 (7DHE)	SR685a V3 (7DHC)	ST250 V3 (7DCF / 7DCE)	SR250 V3 (7DCM / 7DCL)
4XB7A82675	ThinkSystem M.2 7450 PRO 1.92TB Read Intensive NVMe PCIe 4.0 x4 NHS SSD (with Heatsink)	N	N	N	N	N	N	N	N	N	N	Y	N	Y	N	N	N	N	N	N
4XB7A82852	ThinkSystem M.2 7450 PRO 3.84TB Read Intensive NVMe PCIe 4.0 x4 NHS SSD (with Heatsink)	N	N	N	N	N	N	N	N	N	N	N	N	N	N	N	N	N	N	N

Table 14. Server support - PCIe 4.0 NVMe Drives (Part 2 of 4)

Part Number	Description	Edge					Super Computing					1S Intel V2			2S Intel V2		
		SE350 (7Z46 / 7D1X)	SE350 V2 (7DA9)	SE360 V2 (7DAM)	SE450 (7D8T)	SE455 V3 (7DBY)	SD665 V3 (7D9P)	SD665-N V3 (7DAZ)	SD650 V3 (7D7M)	SD650-I V3 (7D7L)	SD650-N V3 (7D7N)	ST150 V2 (7D8K / 7D8J)	ST250 V2 (7D8G / 7D8F)	SR250 V2 (7D7R / 7D7Q)	ST650 V2 (7Z75 / 7Z74)	SR630 V2 (7Z70 / 7Z71)	SR650 V2 (7Z72 / 7Z73)
M.2 SSDs - PCIe 4.0 NVMe - Mixed Use/Mainstream (3-5 DWPD)																	
4XB7A84603	ThinkSystem M.2 7450 MAX 800GB Mixed Use NVMe PCIe 4.0 x4 NHS SSD	N	N	N	Y	N	N	N	N	N	N	N	N	Y	Y	Y	
4XB7A82676	ThinkSystem M.2 7450 MAX 800GB Mixed Use NVMe PCIe 4.0 x4 NHS SSD (with Heatsink)	Y	N	Y	N	N	N	N	N	N	N	N	N	N	N	N	
M.2 SSDs - PCIe 4.0 NVMe - Read Intensive/Entry (<3 DWPD)																	
4XB7A90102	ThinkSystem M.2 PM9A3 960GB Read Intensive NVMe PCIe 4.0 x4 NHS SSD	N	N	N	Y	N	Y	N	Y	N	N	N	N	Y	Y	Y	
4XB7A90103	ThinkSystem M.2 PM9A3 1.92TB Read Intensive NVMe PCIe 4.0 x4 NHS SSD	N	N	N	Y	N	Y	N	Y	N	N	N	N	Y	Y	Y	
4XB7A90104	ThinkSystem M.2 PM9A3 3.84TB Read Intensive NVMe PCIe 4.0 x4 NHS SSD	N	N	N	Y	N	N	N	N	N	N	N	N	Y	Y	Y	
4XB7A82636	ThinkSystem M.2 7450 PRO 480GB Read Intensive NVMe PCIe 4.0 x4 NHS SSD	N	N	N	Y	Y	N	N	N	N	N	Y	N	Y	Y	Y	
4XB7A13999	ThinkSystem M.2 7450 PRO 960GB Read Intensive NVMe PCIe 4.0 x4 NHS SSD	N	N	N	Y	Y	Y	Y	Y	Y	Y	Y	N	Y	Y	Y	
4XB7A14000	ThinkSystem M.2 7450 PRO 1.92TB Read Intensive Entry NVMe PCIe 4.0 x4 NHS SSD	N	N	N	Y	N	Y	Y	Y	Y	Y	N	N	Y	Y	Y	
4XB7A84604	ThinkSystem M.2 7450 PRO 3.84TB Read Intensive NVMe PCIe 4.0 x4 NHS SSD	N	N	N	Y	N	N	N	N	N	N	N	N	Y	Y	Y	
4XB7A83139	ThinkSystem M.2 7450 PRO 480GB Read Intensive NVMe PCIe 4.0 x4 NHS SSD (with Heatsink)	N	Y	Y	N	N	N	N	N	N	N	N	N	N	N	N	
4XB7A82674	ThinkSystem M.2 7450 PRO 960GB Read Intensive NVMe PCIe 4.0 x4 NHS SSD (with Heatsink)	Y	Y	Y	N	N	N	N	N	N	N	N	N	N	N	N	
4XB7A82675	ThinkSystem M.2 7450 PRO 1.92TB Read Intensive NVMe PCIe 4.0 x4 NHS SSD (with Heatsink)	Y	N	Y	N	N	N	N	N	N	N	N	N	N	N	N	
4XB7A82852	ThinkSystem M.2 7450 PRO 3.84TB Read Intensive NVMe PCIe 4.0 x4 NHS SSD (with Heatsink)	Y	N	Y	N	N	N	N	N	N	N	N	N	N	N	N	

Table 15. Server support - PCIe 4.0 NVMe Drives (Part 3 of 4)

Part Number	Description	AMD V1					Dense V2				4S V2	8S	4S V1		1S Intel V1				
		SR635 (7Y98 / 7Y99)	SR655 (7Y00 / 7Z01)	SR655 Client OS	SR645 (7D2Y / 7D2X)	SR665 (7D2W / 7D2V)	SD630 V2 (7D1K)	SD650 V2 (7D1M)	SD650-N V2 (7D1N)	SN550 V2 (7Z69)	SR850 V2 (7D31 / 7D32)	SR860 V2 (7Z59 / 7Z60)	SR950 (7X11 / 7X12)	SR850 (7X18 / 7X19)	SR850P (7D2F / 2D2G)	SR860 (7X69 / 7X70)	ST50 (7Y48 / 7Y50)	ST250 (7Y45 / 7Y46)	SR150 (7Y54)
M.2 SSDs - PCIe 4.0 NVMe - Mixed Use/Mainstream (3-5 DWPD)																			
4XB7A84603	ThinkSystem M.2 7450 MAX 800GB Mixed Use NVMe PCIe 4.0 x4 NHS SSD	N	N	N	Y	Y	N	N	N	N	N	Y	N	N	N	N	N	N	N
4XB7A82676	ThinkSystem M.2 7450 MAX 800GB Mixed Use NVMe PCIe 4.0 x4 NHS SSD (with Heatsink)	N	N	N	N	N	N	N	N	N	N	N	N	N	N	N	N	N	N
M.2 SSDs - PCIe 4.0 NVMe - Read Intensive/Entry (<3 DWPD)																			
4XB7A90102	ThinkSystem M.2 PM9A3 960GB Read Intensive NVMe PCIe 4.0 x4 NHS SSD	N	N	N	Y	Y	N	N	N	N	N	Y	N	N	N	N	N	N	N
4XB7A90103	ThinkSystem M.2 PM9A3 1.92TB Read Intensive NVMe PCIe 4.0 x4 NHS SSD	N	N	N	Y	Y	N	N	N	N	N	Y	N	N	N	N	N	N	N
4XB7A90104	ThinkSystem M.2 PM9A3 3.84TB Read Intensive NVMe PCIe 4.0 x4 NHS SSD	N	N	N	Y	Y	N	N	N	N	N	Y	N	N	N	N	N	N	N
4XB7A82636	ThinkSystem M.2 7450 PRO 480GB Read Intensive NVMe PCIe 4.0 x4 NHS SSD	N	N	N	Y	Y	N	N	N	N	N	Y	N	N	N	N	N	N	N
4XB7A13999	ThinkSystem M.2 7450 PRO 960GB Read Intensive NVMe PCIe 4.0 x4 NHS SSD	N	N	N	Y	Y	N	N	N	N	N	Y	N	N	N	N	N	N	N
4XB7A14000	ThinkSystem M.2 7450 PRO 1.92TB Read Intensive Entry NVMe PCIe 4.0 x4 NHS SSD	N	N	N	Y	Y	N	N	N	N	N	Y	N	N	N	N	N	N	N
4XB7A84604	ThinkSystem M.2 7450 PRO 3.84TB Read Intensive NVMe PCIe 4.0 x4 NHS SSD	N	N	N	Y	Y	N	N	N	N	N	Y	N	N	N	N	N	N	N
4XB7A83139	ThinkSystem M.2 7450 PRO 480GB Read Intensive NVMe PCIe 4.0 x4 NHS SSD (with Heatsink)	N	N	N	N	N	N	N	N	N	N	N	N	N	N	N	N	N	N
4XB7A82674	ThinkSystem M.2 7450 PRO 960GB Read Intensive NVMe PCIe 4.0 x4 NHS SSD (with Heatsink)	N	N	N	N	N	N	N	N	N	N	N	N	N	N	N	N	N	N

Part Number	Description	AMD V1					Dense V2					4S V2	8S	4S V1		1S Intel V1			
		SR635 (7Y98 / 7Y99)	SR655 (7Y00 / 7Z01)	SR655 Client OS	SR645 (7D2Y / 7D2X)	SR665 (7D2W / 7D2V)	SD630 V2 (7D1K)	SD650 V2 (7D1M)	SD650-N V2 (7D1N)	SN550 V2 (7Z69)	SR850 V2 (7D31 / 7D32)	SR860 V2 (7Z59 / 7Z60)	SR950 (7X11 / 7X12)	SR850 (7X18 / 7X19)	SR850P (7D2F / 2D2G)	SR860 (7X69 / 7X70)	ST50 (7Y48 / 7Y50)	ST250 (7Y45 / 7Y46)	SR150 (7Y54)
4XB7A82675	ThinkSystem M.2 7450 PRO 1.92TB Read Intensive NVMe PCIe 4.0 x4 NHS SSD (with Heatsink)	N	N	N	N	N	N	N	N	N	N	N	N	N	N	N	N	N	N
4XB7A82852	ThinkSystem M.2 7450 PRO 3.84TB Read Intensive NVMe PCIe 4.0 x4 NHS SSD (with Heatsink)	N	N	N	N	N	N	N	N	N	N	N	N	N	N	N	N	N	N

Table 16. Server support - PCIe 4.0 NVMe Drives (Part 4 of 4)

Part Number	Description	2S Intel V1								Dense V1			
		ST550 (7X09 / 7X10)	SR530 (7X07 / 7X08)	SR550 (7X03 / 7X04)	SR570 (7Y02 / 7Y03)	SR590 (7X98 / 7X99)	SR630 (7X01 / 7X02)	SR650 (7X05 / 7X06)	SR670 (7Y36 / 7Y37)	SD530 (7X21)	SD650 (7X58)	SN550 (7X16)	SN650 (7X15)
M.2 SSDs - PCIe 4.0 NVMe - Mixed Use/Mainstream (3-5 DWPD)													
4XB7A84603	ThinkSystem M.2 7450 MAX 800GB Mixed Use NVMe PCIe 4.0 x4 NHS SSD	N	N	N	N	N	N	N	N	N	N	N	N
4XB7A82676	ThinkSystem M.2 7450 MAX 800GB Mixed Use NVMe PCIe 4.0 x4 NHS SSD (with Heatsink)	N	N	N	N	N	N	N	N	N	N	N	N
M.2 SSDs - PCIe 4.0 NVMe - Read Intensive/Entry (<3 DWPD)													
4XB7A90102	ThinkSystem M.2 PM9A3 960GB Read Intensive NVMe PCIe 4.0 x4 NHS SSD	N	N	N	N	N	N	N	N	N	N	N	N
4XB7A90103	ThinkSystem M.2 PM9A3 1.92TB Read Intensive NVMe PCIe 4.0 x4 NHS SSD	N	N	N	N	N	N	N	N	N	N	N	N
4XB7A90104	ThinkSystem M.2 PM9A3 3.84TB Read Intensive NVMe PCIe 4.0 x4 NHS SSD	N	N	N	N	N	N	N	N	N	N	N	N
4XB7A82636	ThinkSystem M.2 7450 PRO 480GB Read Intensive NVMe PCIe 4.0 x4 NHS SSD	N	N	N	N	N	N	N	N	N	N	N	N
4XB7A13999	ThinkSystem M.2 7450 PRO 960GB Read Intensive NVMe PCIe 4.0 x4 NHS SSD	N	N	N	N	N	N	N	N	N	N	N	N
4XB7A14000	ThinkSystem M.2 7450 PRO 1.92TB Read Intensive Entry NVMe PCIe 4.0 x4 NHS SSD	N	N	N	N	N	N	N	N	N	N	N	N
4XB7A84604	ThinkSystem M.2 7450 PRO 3.84TB Read Intensive NVMe PCIe 4.0 x4 NHS SSD	N	N	N	N	N	N	N	N	N	N	N	N
4XB7A83139	ThinkSystem M.2 7450 PRO 480GB Read Intensive NVMe PCIe 4.0 x4 NHS SSD (with Heatsink)	N	N	N	N	N	N	N	N	N	N	N	N
4XB7A82674	ThinkSystem M.2 7450 PRO 960GB Read Intensive NVMe PCIe 4.0 x4 NHS SSD (with Heatsink)	N	N	N	N	N	N	N	N	N	N	N	N
4XB7A82675	ThinkSystem M.2 7450 PRO 1.92TB Read Intensive NVMe PCIe 4.0 x4 NHS SSD (with Heatsink)	N	N	N	N	N	N	N	N	N	N	N	N
4XB7A82852	ThinkSystem M.2 7450 PRO 3.84TB Read Intensive NVMe PCIe 4.0 x4 NHS SSD (with Heatsink)	N	N	N	N	N	N	N	N	N	N	N	N

PCIe 3.0 NVMe drives

The following tables list the ThinkSystem servers that are compatible with NVMe M.2 drives.

Table 17. Server support - PCIe 3.0 NVMe Drives (Part 1 of 4)

Part Number	Description	2S AMD V3				2S Intel V3				4S 8S Intel V3				Multi Node				GPU Rich				1S V3	
		SR635 V3 (7D9H / 7D9G)	SR655 V3 (7D9F / 7D9E)	SR645 V3 (7D9D / 7D9C)	SR665 V3 (7D9B / 7D9A)	ST650 V3 (7D7B / 7D7A)	SR630 V3 (7D72 / 7D73)	SR650 V3 (7D75 / 7D76)	SR850 V3 (7D97 / 7D96)	SR860 V3 (7D94 / 7D93)	SR950 V3 (7DC5 / 7DC4)	SD535 V3 (7DD8 / 7DD1)	SD530 V3 (7DDA / 7DD3)	SD550 V3 (7DD9 / 7DD2)	SR670 V2 (7Z22 / 7Z23)	SR675 V3 (7D9Q / 7D9R)	SR680a V3 (7DHE)	SR685a V3 (7DHC)	ST250 V3 (7DCF / 7DCE)	SR250 V3 (7DCM / 7DCL)			
M.2 SSDs - PCIe 3.0 NVMe - Read Intensive/Entry (<3 DWPD)																							
4XB7A82625	ThinkSystem M.2 N600Si 650GB Read Intensive NVMe PCIe 3.0 x4 NHS SSD SED (Industrial)	N	N	N	N	N	N	N	N	N	N	N	N	N	N	N	N	N	N	N			
4XB7A82627	ThinkSystem M.2 N600Si 960GB Read Intensive NVMe PCIe 3.0 x4 NHS SSD SED (Industrial)	N	N	N	N	N	N	N	N	N	N	N	N	N	N	N	N	N	N	N			
4XB7A82628	ThinkSystem M.2 N600Si 1.92TB Read Intensive NVMe PCIe 3.0 x4 NHS SSD SED (Industrial)	N	N	N	N	N	N	N	N	N	N	N	N	N	N	N	N	N	N	N			
4XB7A64190	ThinkSystem M.2 N600Si 650GB NVMe PCIe 3.0 x4 Non-Hot Swap SSD (Industrial)	N	N	N	N	N	N	N	N	N	N	N	N	N	N	N	N	N	N	N			
4XB7A64204	ThinkSystem M.2 N600Si 1.92TB NVMe PCIe 3.0 x4 Non-Hot Swap SSD (Industrial)	N	N	N	N	N	N	N	N	N	N	N	N	N	N	N	N	N	N	N			

Table 18. Server support - PCIe 3.0 NVMe Drives (Part 2 of 4)

Part Number	Description	Edge					Super Computing					1S Intel V2			2S Intel V2		
		SE350 (7Z46 / 7D1X)	SE350 V2 (7DA9)	SE360 V2 (7DAM)	SE450 (7D8T)	SE455 V3 (7DBY)	SD665 V3 (7D9P)	SD665-N V3 (7DAZ)	SD650 V3 (7D7M)	SD650-I V3 (7D7L)	SD650-N V3 (7D7N)	ST150 V2 (7D8K / 7D8J)	ST250 V2 (7D8G / 7D8F)	SR250 V2 (7D7R / 7D7Q)	ST650 V2 (7Z75 / 7Z74)	SR630 V2 (7Z70 / 7Z71)	SR650 V2 (7Z72 / 7Z73)
M.2 SSDs - PCIe 3.0 NVMe - Read Intensive/Entry (<3 DWPD)																	
4XB7A82625	ThinkSystem M.2 N600Si 650GB Read Intensive NVMe PCIe 3.0 x4 NHS SSD SED (Industrial)	Y	N	N	N	N	N	N	N	N	N	N	N	N	N	N	N
4XB7A82627	ThinkSystem M.2 N600Si 960GB Read Intensive NVMe PCIe 3.0 x4 NHS SSD SED (Industrial)	Y	N	N	N	N	N	N	N	N	N	N	N	N	N	N	N
4XB7A82628	ThinkSystem M.2 N600Si 1.92TB Read Intensive NVMe PCIe 3.0 x4 NHS SSD SED (Industrial)	Y	N	N	N	N	N	N	N	N	N	N	N	N	N	N	N
4XB7A64190	ThinkSystem M.2 N600Si 650GB NVMe PCIe 3.0 x4 Non-Hot Swap SSD (Industrial)	Y	N	N	N	N	N	N	N	N	N	N	N	N	N	N	N
4XB7A64204	ThinkSystem M.2 N600Si 1.92TB NVMe PCIe 3.0 x4 Non-Hot Swap SSD (Industrial)	Y	N	N	N	N	N	N	N	N	N	N	N	N	N	N	N

Table 19. Server support - PCIe 3.0 NVMe Drives (Part 3 of 4)

Part Number	Description	AMD V1					Dense V2				4S V2	8S	4S V1		1S Intel V1				
		SR635 (7Y98 / 7Y99)	SR655 (7Y00 / 7Z01)	SR655 Client OS	SR645 (7D2Y / 7D2X)	SR665 (7D2W / 7D2V)	SD630 V2 (7D1K)	SD650 V2 (7D1M)	SD650-N V2 (7D1N)	SN550 V2 (7Z69)	SR850 V2 (7D31 / 7D32)	SR860 V2 (7Z59 / 7Z60)	SR950 (7X11 / 7X12)	SR850 (7X18 / 7X19)	SR850P (7D2F / 2D2G)	SR860 (7X69 / 7X70)	ST50 (7Y48 / 7Y50)	ST250 (7Y45 / 7Y46)	SR150 (7Y54)
M.2 SSDs - PCIe 3.0 NVMe - Read Intensive/Entry (<3 DWPD)																			
4XB7A82625	ThinkSystem M.2 N600Si 650GB Read Intensive NVMe PCIe 3.0 x4 NHS SSD SED (Industrial)	N	N	N	N	N	N	N	N	N	N	N	N	N	N	N	N	N	N
4XB7A82627	ThinkSystem M.2 N600Si 960GB Read Intensive NVMe PCIe 3.0 x4 NHS SSD SED (Industrial)	N	N	N	N	N	N	N	N	N	N	N	N	N	N	N	N	N	N
4XB7A82628	ThinkSystem M.2 N600Si 1.92TB Read Intensive NVMe PCIe 3.0 x4 NHS SSD SED (Industrial)	N	N	N	N	N	N	N	N	N	N	N	N	N	N	N	N	N	N
4XB7A64190	ThinkSystem M.2 N600Si 650GB NVMe PCIe 3.0 x4 Non-Hot Swap SSD (Industrial)	N	N	N	N	N	N	N	N	N	N	N	N	N	N	N	N	N	N
4XB7A64204	ThinkSystem M.2 N600Si 1.92TB NVMe PCIe 3.0 x4 Non-Hot Swap SSD (Industrial)	N	N	N	N	N	N	N	N	N	N	N	N	N	N	N	N	N	N

Table 20. Server support - PCIe 3.0 NVMe Drives (Part 4 of 4)

Part Number	Description	2S Intel V1								Dense V1			
		ST550 (7X09 / 7X10)	SR530 (7X07 / 7X08)	SR550 (7X03 / 7X04)	SR570 (7Y02 / 7Y03)	SR590 (7X98 / 7X99)	SR630 (7X01 / 7X02)	SR650 (7X05 / 7X06)	SR670 (7Y36 / 7Y37)	SD530 (7X21)	SD650 (7X58)	SN550 (7X16)	SN850 (7X15)
M.2 SSDs - PCIe 3.0 NVMe - Read Intensive/Entry (<3 DDPD)													
4XB7A82625	ThinkSystem M.2 N600Si 650GB Read Intensive NVMe PCIe 3.0 x4 NHS SSD SED (Industrial)	N	N	N	N	N	N	N	N	N	N	N	N
4XB7A82627	ThinkSystem M.2 N600Si 960GB Read Intensive NVMe PCIe 3.0 x4 NHS SSD SED (Industrial)	N	N	N	N	N	N	N	N	N	N	N	N
4XB7A82628	ThinkSystem M.2 N600Si 1.92TB Read Intensive NVMe PCIe 3.0 x4 NHS SSD SED (Industrial)	N	N	N	N	N	N	N	N	N	N	N	N
4XB7A64190	ThinkSystem M.2 N600Si 650GB NVMe PCIe 3.0 x4 Non-Hot Swap SSD (Industrial)	N	N	N	N	N	N	N	N	N	N	N	N
4XB7A64204	ThinkSystem M.2 N600Si 1.92TB NVMe PCIe 3.0 x4 Non-Hot Swap SSD (Industrial)	N	N	N	N	N	N	N	N	N	N	N	N

Operating system support

The adapters support the following operating systems:

- [ThinkSystem M.2 Enablement Kit, 7Y37A01092](#)
- [ThinkSystem M.2 with Mirroring Enablement Kit, 7Y37A01093](#)
- [ThinkSystem M.2 SATA 2-Bay RAID Enablement Kit, 4Y37A09739](#)
- [ThinkSystem M.2 NVMe 2-Bay RAID Enablement Kit, 4Y37A09750](#)
- [ThinkSystem SE350 M.2 SATA 4-Bay Data RAID Mirroring Enablement Kit, 4M17A37606](#)

Tip: These tables are automatically generated based on data from [Lenovo ServerProven](#). Other M.2 adapters are considered operating system independent.

Table 21. Operating system support for ThinkSystem M.2 Enablement Kit, 7Y37A01092 (Part 1 of 2)

Operating systems	SE350	SD530 (Xeon Gen 2)	SD650 (Xeon Gen 2)	SN550 (Xeon Gen 2)	SN850 (Xeon Gen 2)	SR530 (Xeon Gen 2)	SR550 (Xeon Gen 2)	SR570 (Xeon Gen 2)	SR590 (Xeon Gen 2)	SR630 (Xeon Gen 2)	SR650 (Xeon Gen 2)	SR670 (Xeon Gen 2)	SR850 (Xeon Gen 2)	SR850P (Xeon Gen 2)	SR860 (Xeon Gen 2)	SR950 (Xeon Gen 2)	ST550 (Xeon Gen 2)
For OS support info. please refer to LeSI Best Recipe.	N	N	Y ¹	N	N	N	N	N	N	N	N	N	N	N	N	N	N
Microsoft Windows Server 2012 R2	N	N	N	N	N	N	N	N	N	N	N	N	N	N	N	N	N
Microsoft Windows Server 2016	Y	Y	N	Y	Y	Y	Y	Y	Y	Y	Y	N	Y	Y	Y	Y	Y
Microsoft Windows Server 2019	Y	Y	N	Y	Y	Y	Y	Y	Y	Y	Y	N	Y	Y	Y	Y	Y
Microsoft Windows Server version 1709	N	N	N	N	N	N	N	N	N	N	N	N	N	N	N	N	N
Microsoft Windows Server version 1803	N	N	N	N	N	N	N	N	N	N	N	N	N	N	N	N	N
Red Hat Enterprise Linux 6 Server x64 Edition	N	N	N	N	N	N	N	N	N	N	N	N	N	N	N	N	N
Red Hat Enterprise Linux 6.10	N	N	N	N	N	N	N	N	N	N	N	N	N	N	N	N	N
Red Hat Enterprise Linux 6.9	N	N	N	N	N	N	N	N	N	N	N	N	N	N	N	N	N
Red Hat Enterprise Linux 7.3	N	N	N	N	N	N	N	N	N	N	N	N	N	N	N	N	N
Red Hat Enterprise Linux 7.4	N	N	N	N	N	N	N	N	N	N	N	N	N	N	N	N	N
Red Hat Enterprise Linux 7.5	N	N	N	N	N	N	N	N	N	N	N	Y	N	N	N	N	N
Red Hat Enterprise Linux 7.6	Y	Y	N	Y	Y	Y	Y	Y	Y	Y	Y	Y	Y	Y	Y	Y	Y
Red Hat Enterprise Linux 7.7	Y	Y	N	Y	Y	Y	Y	Y	Y	Y	Y	Y	Y	Y	Y	Y	Y
Red Hat Enterprise Linux 7.8	Y	Y	N	Y	Y	Y	Y	Y	Y	Y	Y	Y	Y	Y	Y	Y	Y
Red Hat Enterprise Linux 7.9	Y	Y	N	Y	Y	Y	Y	Y	Y	Y	Y	Y	Y	Y	Y	Y	Y
Red Hat Enterprise Linux 8.0	N	Y	N	Y	Y	Y	Y	Y	Y	Y	Y	Y	Y	Y	Y	Y	Y
Red Hat Enterprise Linux 8.1	Y	Y	N	Y	Y	Y	Y	Y	Y	Y	Y	Y	Y	Y	Y	Y	Y
Red Hat Enterprise Linux 8.2	Y	Y	N	Y	Y	Y	Y	Y	Y	Y	Y	Y	Y	Y	Y	Y	Y
Red Hat Enterprise Linux 8.3	Y	Y	N	Y	Y	Y	Y	Y	Y	Y	Y	Y	Y	Y	Y	Y	Y
Red Hat Enterprise Linux 8.4	Y	Y	N	Y	Y	Y	Y	Y	Y	Y	Y	Y	Y	Y	Y	Y	Y
Red Hat Enterprise Linux 8.5	Y	Y	N	Y	Y	Y	Y	Y	Y	Y	Y	Y	Y	Y	Y	Y	Y
Red Hat Enterprise Linux 8.6	Y	Y	N	Y	Y	Y	Y	Y	Y	Y	Y	Y	Y	Y	Y	Y	Y

	SE350	SD530 (Xeon Gen 2)	SD650 (Xeon Gen 2)	SN550 (Xeon Gen 2)	SN850 (Xeon Gen 2)	SR530 (Xeon Gen 2)	SR550 (Xeon Gen 2)	SR570 (Xeon Gen 2)	SR590 (Xeon Gen 2)	SR630 (Xeon Gen 2)	SR650 (Xeon Gen 2)	SR670 (Xeon Gen 2)	SR850 (Xeon Gen 2)	SR850P (Xeon Gen 2)	SR860 (Xeon Gen 2)	SR950 (Xeon Gen 2)	ST550 (Xeon Gen 2)
Operating systems																	
SUSE Linux Enterprise Server 11 SP4	N	N	N	N	N	N	N	N	N	N	N	N	N	N	N	N	N
SUSE Linux Enterprise Server 11 SP4 with Xen	N	N	N	N	N	N	N	N	N	N	N	N	N	N	N	N	N
SUSE Linux Enterprise Server 12 SP2	N	N	N	N	N	N	N	N	N	N	N	N	N	N	N	N	N
SUSE Linux Enterprise Server 12 SP2 with Xen	N	N	N	N	N	N	N	N	N	N	N	N	N	N	N	N	N
SUSE Linux Enterprise Server 12 SP3	N	N	N	N	N	N	N	N	N	N	N	N	N	N	N	N	N
SUSE Linux Enterprise Server 12 SP3 with Xen	N	N	N	N	N	N	N	N	N	N	N	N	N	Y	N	N	N
SUSE Linux Enterprise Server 12 SP4	N	Y	N	Y	Y	Y	Y	Y	Y	Y	Y	Y	N	Y	Y	Y	Y
SUSE Linux Enterprise Server 12 SP4 with Xen	N	Y	N	Y	Y	Y	Y	Y	Y	Y	Y	Y	N	Y	Y	Y	Y
SUSE Linux Enterprise Server 12 SP5	N	Y	N	Y	Y	Y	Y	Y	Y	Y	Y	Y	Y	Y	Y	Y	Y
SUSE Linux Enterprise Server 12 SP5 with Xen	N	Y	N	Y	Y	Y	Y	Y	Y	Y	Y	Y	Y	Y	Y	Y	Y
SUSE Linux Enterprise Server 15	Y	Y	N	Y	Y	Y	Y	Y	Y	Y	Y	Y	N	Y	Y	Y	Y
SUSE Linux Enterprise Server 15 SP1	Y	Y	N	Y	Y	Y	Y	Y	Y	Y	Y	Y	Y	Y	Y	Y	Y
SUSE Linux Enterprise Server 15 SP1 with Xen	Y	Y	N	Y	Y	Y	Y	Y	Y	Y	Y	Y	Y	Y	Y	Y	Y
SUSE Linux Enterprise Server 15 SP2	Y	Y	N	Y	Y	Y	Y	Y	Y	Y	Y	Y	Y	Y	Y	Y	Y
SUSE Linux Enterprise Server 15 SP2 with Xen	Y	Y	N	Y	Y	Y	Y	Y	Y	Y	Y	Y	Y	Y	Y	Y	Y
SUSE Linux Enterprise Server 15 SP3	Y	Y	N	Y	Y	Y	Y	Y	Y	Y	Y	Y	Y	Y	Y	Y	Y
SUSE Linux Enterprise Server 15 SP3 with Xen	Y	Y	N	Y	Y	Y	Y	Y	Y	Y	Y	Y	Y	Y	Y	Y	Y
SUSE Linux Enterprise Server 15 with Xen	Y	Y	N	Y	Y	Y	Y	Y	Y	Y	Y	Y	N	Y	Y	Y	Y
Ubuntu 22.04 LTS	Y	Y	N	Y	Y	Y	Y	Y	Y	Y	Y	Y	Y	Y	Y	Y	Y
VMware vSphere Hypervisor (ESXi) 6.0 U3	N	N	N	N	N	N	N	N	N	N	N	N	N	N	N	N	N
VMware vSphere Hypervisor (ESXi) 6.5	N	N	N	N	N	N	N	N	N	N	N	N	N	N	N	N	N
VMware vSphere Hypervisor (ESXi) 6.5 U1	N	N	N	N	N	N	N	N	N	N	N	N	N	N	N	N	N
VMware vSphere Hypervisor (ESXi) 6.5 U2	Y	Y	N	Y	Y	Y	Y	Y	Y	Y	Y	N	Y	Y	Y	Y	Y
VMware vSphere Hypervisor (ESXi) 6.5 U3	N	Y	N	Y	Y	Y	Y	Y	Y	Y	Y	N	Y	Y	Y	Y	Y
VMware vSphere Hypervisor (ESXi) 6.7	N	N	N	N	N	N	N	N	N	N	N	N	N	N	N	N	N
VMware vSphere Hypervisor (ESXi) 6.7 U1	N	Y	N	Y	Y	Y	Y	Y	Y	Y	Y	N	Y	Y	Y	Y	Y
VMware vSphere Hypervisor (ESXi) 6.7 U2	Y	Y	N	Y	Y	Y	Y	Y	Y	Y	Y	N	Y	Y	Y	Y	Y
VMware vSphere Hypervisor (ESXi) 6.7 U3	Y	Y	N	Y	Y	Y	Y	Y	Y	Y	Y	Y	Y	Y	Y	Y	Y
VMware vSphere Hypervisor (ESXi) 7.0	Y	Y	N	Y	Y	Y	Y	Y	Y	Y	Y	Y	Y	Y	Y	Y	Y
VMware vSphere Hypervisor (ESXi) 7.0 U1	Y	Y	N	Y	Y	Y	Y	Y	Y	Y	Y	Y	Y	Y	Y	Y	Y
VMware vSphere Hypervisor (ESXi) 7.0 U2	Y	Y	N	Y	Y	Y	Y	Y	Y	Y	Y	Y	Y	Y	Y	Y	Y
VMware vSphere Hypervisor (ESXi) 7.0 U3	Y	Y	N	Y	Y	Y	Y	Y	Y	Y	Y	Y	Y	Y	Y	Y	Y

¹ 1. This item is not a general stand-alone option for Lenovo ThinkSystem SD650 (Xeon SP Gen 2), M/T 7X58 (Xeon SP Gen 2). 2. For OS support matrix, pls refer to LeSI Best Recipe. 3. This item shall be installed/removed by Lenovo support rep only.

Table 22. Operating system support for ThinkSystem M.2 Enablement Kit, 7Y37A01092 (Part 2 of 2)

Operating systems	SD530 (Xeon Gen 1)	SD650 (Xeon Gen 1)	SN850 (Xeon Gen 1)	SR530 (Xeon Gen 1)	SR550 (Xeon Gen 1)	SR570 (Xeon Gen 1)	SR590 (Xeon Gen 1)	SR630 (Xeon Gen 1)	SR650 (Xeon Gen 1)	SR670 (Xeon Gen 1)	SR850 (Xeon Gen 1)	SR860 (Xeon Gen 1)	SR950 (Xeon Gen 1)	ST550 (Xeon Gen 1)
For OS support info. please refer to LeSI Best Recipe.	N	Y ¹	N	N	N	N	N	N	N	N	N	N	N	N
Microsoft Windows Server 2012 R2	Y	N	Y	Y	Y	Y	Y	Y	Y	N	Y	Y	Y	Y
Microsoft Windows Server 2016	Y	N	Y	Y	Y	Y	Y	Y	Y	N	Y	Y	Y	Y
Microsoft Windows Server 2019	Y	N	Y	Y	Y	Y	Y	Y	Y	N	Y	Y	Y	Y
Microsoft Windows Server version 1709	Y	N	Y	Y	Y	Y	Y	Y	Y	N	Y	Y	Y	Y
Microsoft Windows Server version 1803	Y	N	N	N	N	N	N	Y	Y	N	Y	Y	Y	N
Red Hat Enterprise Linux 6 Server x64 Edition	N	N	N	N	Y	N	N	N	N	N	N	N	N	N
Red Hat Enterprise Linux 6.10	Y	N	Y	Y	Y	Y	Y	Y	Y	N	Y	Y	Y	Y
Red Hat Enterprise Linux 6.9	Y	N	Y	Y	Y	Y	Y	Y	Y	N	Y	Y	Y	Y
Red Hat Enterprise Linux 7.3	Y	N	Y	Y	Y	N	N	Y	Y	N	Y	N	Y	Y
Red Hat Enterprise Linux 7.4	Y	N	Y	Y	Y	Y	Y	Y	Y	N	Y	Y	Y	Y
Red Hat Enterprise Linux 7.5	Y	N	Y	Y	Y	Y	Y	Y	Y	Y	Y	Y	Y	Y
Red Hat Enterprise Linux 7.6	Y	N	Y	Y	Y	Y	Y	Y	Y	Y	Y	Y	Y	Y
Red Hat Enterprise Linux 7.7	Y	N	Y	Y	Y	Y	Y	Y	Y	Y	Y	Y	Y	Y
Red Hat Enterprise Linux 7.8	Y	N	Y	Y	Y	Y	Y	Y	Y	Y	Y	Y	Y	Y
Red Hat Enterprise Linux 7.9	Y	N	Y	Y	Y	Y	Y	Y	Y	Y	Y	Y	Y	Y
Red Hat Enterprise Linux 8.0	Y	N	Y	Y	Y	Y	Y	Y	Y	Y	Y	Y	Y	Y
Red Hat Enterprise Linux 8.1	Y	N	Y	Y	Y	Y	Y	Y	Y	Y	Y	Y	Y	Y
Red Hat Enterprise Linux 8.2	Y	N	Y	Y	Y	Y	Y	Y	Y	Y	Y	Y	Y	Y
Red Hat Enterprise Linux 8.3	Y	N	Y	Y	Y	Y	Y	Y	Y	Y	Y	Y	Y	Y
Red Hat Enterprise Linux 8.4	Y	N	Y	Y	Y	Y	Y	Y	Y	Y	Y	Y	Y	Y
Red Hat Enterprise Linux 8.5	Y	N	Y	Y	Y	Y	Y	Y	Y	Y	Y	Y	Y	Y
Red Hat Enterprise Linux 8.6	Y	N	Y	Y	Y	Y	Y	Y	Y	Y	Y	Y	Y	Y
SUSE Linux Enterprise Server 11 SP4	Y	N	Y	Y	Y	Y	Y	Y	Y	N	Y	Y	Y	Y
SUSE Linux Enterprise Server 11 SP4 with Xen	Y	N	Y	Y	Y	Y	Y	Y	Y	N	Y	Y	Y	Y
SUSE Linux Enterprise Server 12 SP2	Y	N	Y	Y	Y	N	N	Y	Y	N	Y	N	Y	Y
SUSE Linux Enterprise Server 12 SP2 with Xen	Y	N	Y	Y	Y	N	N	Y	Y	N	Y	N	Y	Y
SUSE Linux Enterprise Server 12 SP3	Y	N	Y	Y	Y	Y	Y	Y	Y	N	Y	Y	Y	Y
SUSE Linux Enterprise Server 12 SP3 with Xen	Y	N	Y	Y	Y	Y	Y	Y	Y	N	Y	Y	Y	Y
SUSE Linux Enterprise Server 12 SP4	Y	N	Y	Y	Y	Y	Y	Y	Y	N	Y	Y	Y	Y
SUSE Linux Enterprise Server 12 SP4 with Xen	Y	N	Y	Y	Y	Y	Y	Y	Y	N	Y	Y	Y	Y
SUSE Linux Enterprise Server 12 SP5	Y	N	Y	Y	Y	Y	Y	Y	Y	Y	Y	Y	Y	Y
SUSE Linux Enterprise Server 12 SP5 with Xen	Y	N	Y	Y	Y	Y	Y	Y	Y	Y	Y	Y	Y	Y
SUSE Linux Enterprise Server 15	Y	N	Y	Y	Y	Y	Y	Y	Y	N	Y	Y	Y	Y

	SD530 (Xeon Gen 1)	SD650 (Xeon Gen 1)	SN850 (Xeon Gen 1)	SR530 (Xeon Gen 1)	SR550 (Xeon Gen 1)	SR570 (Xeon Gen 1)	SR590 (Xeon Gen 1)	SR630 (Xeon Gen 1)	SR650 (Xeon Gen 1)	SR670 (Xeon Gen 1)	SR850 (Xeon Gen 1)	SR860 (Xeon Gen 1)	SR950 (Xeon Gen 1)	ST550 (Xeon Gen 1)
Operating systems														
SUSE Linux Enterprise Server 15 SP1	Y	N	Y	Y	Y	Y	Y	Y	Y	Y	Y	Y	Y	Y
SUSE Linux Enterprise Server 15 SP1 with Xen	Y	N	Y	Y	Y	Y	Y	Y	Y	Y	Y	Y	Y	Y
SUSE Linux Enterprise Server 15 SP2	Y	N	Y	Y	Y	Y	Y	Y	Y	Y	Y	Y	Y	Y
SUSE Linux Enterprise Server 15 SP2 with Xen	Y	N	Y	Y	Y	Y	Y	Y	Y	Y	Y	Y	Y	Y
SUSE Linux Enterprise Server 15 SP3	Y	N	Y	Y	Y	Y	Y	Y	Y	Y	Y	Y	Y	Y
SUSE Linux Enterprise Server 15 SP3 with Xen	Y	N	Y	Y	Y	Y	Y	Y	Y	Y	Y	Y	Y	Y
SUSE Linux Enterprise Server 15 with Xen	Y	N	Y	Y	Y	Y	Y	Y	Y	N	Y	Y	Y	Y
Ubuntu 22.04 LTS	Y	N	Y	Y	Y	Y	Y	Y	Y	Y	Y	Y	Y	Y
VMware vSphere Hypervisor (ESXi) 6.0 U3	Y	N	Y	Y	Y	Y	Y	Y	Y	N	Y	Y	Y	Y
VMware vSphere Hypervisor (ESXi) 6.5	Y	N	Y	Y	Y	N	N	Y	Y	N	Y	N	Y	Y
VMware vSphere Hypervisor (ESXi) 6.5 U1	Y	N	Y	Y	Y	Y	Y	Y	Y	N	Y	Y	Y	Y
VMware vSphere Hypervisor (ESXi) 6.5 U2	Y	N	Y	Y	Y	Y	Y	Y	Y	N	Y	Y	Y	Y
VMware vSphere Hypervisor (ESXi) 6.5 U3	Y	N	Y	Y	Y	Y	Y	Y	Y	N	Y	Y	Y	Y
VMware vSphere Hypervisor (ESXi) 6.7	Y	N	Y	Y	Y	Y	Y	Y	Y	N	Y	Y	Y	Y
VMware vSphere Hypervisor (ESXi) 6.7 U1	Y	N	Y	Y	Y	Y	Y	Y	Y	N	Y	Y	Y	Y
VMware vSphere Hypervisor (ESXi) 6.7 U2	Y	N	Y	Y	Y	Y	Y	Y	Y	N	Y	Y	Y	Y
VMware vSphere Hypervisor (ESXi) 6.7 U3	Y	N	Y	Y	Y	Y	Y	Y	Y	Y	Y	Y	Y	Y
VMware vSphere Hypervisor (ESXi) 7.0	Y	N	Y	Y	Y	Y	Y	Y	Y	Y	Y	Y	Y	Y
VMware vSphere Hypervisor (ESXi) 7.0 U1	Y	N	Y	Y	Y	Y	Y	Y	Y	Y	Y	Y	Y	Y
VMware vSphere Hypervisor (ESXi) 7.0 U2	Y	N	Y	Y	Y	Y	Y	Y	Y	Y	Y	Y	Y	Y
VMware vSphere Hypervisor (ESXi) 7.0 U3	Y	N	Y	Y	Y	Y	Y	Y	Y	Y	Y	Y	Y	Y

¹ 1. This item is not a general stand-alone option for Lenovo ThinkSystem SD650 (M/T 7X58). 2. For OS support matrix, pls refer to LeSI Best Recipe. 3. This Item shall be installed/removed by Lenovo support rep only.

Table 23. Operating system support for ThinkSystem M.2 with Mirroring Enablement Kit, 7Y37A01093 (Part 1 of 2)

	SD530 (Xeon Gen 2)	SD650 (Xeon Gen 2)	SN550 (Xeon Gen 2)	SN850 (Xeon Gen 2)	SR530 (Xeon Gen 2)	SR550 (Xeon Gen 2)	SR570 (Xeon Gen 2)	SR590 (Xeon Gen 2)	SR630 (Xeon Gen 2)	SR650 (Xeon Gen 2)	SR670 (Xeon Gen 2)	SR850 (Xeon Gen 2)	SR850P (Xeon Gen 2)	SR860 (Xeon Gen 2)	SR950 (Xeon Gen 2)	ST550 (Xeon Gen 2)
Operating systems																
For OS support info. please refer to LeSI Best Recipe.	N	Y ¹	N	N	N	N	N	N	N	N	N	N	N	N	N	N
Microsoft Windows Server 2012 R2	N	N	N	N	N	N	N	N	N	N	N	N	N	N	N	N
Microsoft Windows Server 2016	Y	N	Y	Y	Y	Y	Y	Y	Y	Y	N	Y	Y	Y	Y	Y

	SD530 (Xeon Gen 2)	SD650 (Xeon Gen 2)	SN550 (Xeon Gen 2)	SN850 (Xeon Gen 2)	SR530 (Xeon Gen 2)	SR550 (Xeon Gen 2)	SR570 (Xeon Gen 2)	SR590 (Xeon Gen 2)	SR630 (Xeon Gen 2)	SR650 (Xeon Gen 2)	SR670 (Xeon Gen 2)	SR850 (Xeon Gen 2)	SR850P (Xeon Gen 2)	SR860 (Xeon Gen 2)	SR950 (Xeon Gen 2)	ST550 (Xeon Gen 2)
Operating systems																
Microsoft Windows Server 2019	Y	N	Y	Y	Y	Y	Y	Y	Y	Y	N	Y	Y	Y	Y	Y
Microsoft Windows Server version 1709	N	N	N	N	N	N	N	N	N	N	N	N	N	N	N	N
Microsoft Windows Server version 1803	N	N	N	N	N	N	N	N	N	N	N	N	N	N	N	N
Red Hat Enterprise Linux 6 Server x64 Edition	N	N	N	N	N	N	N	N	N	N	N	N	N	N	N	N
Red Hat Enterprise Linux 6.10	N	N	N	N	N	N	N	N	N	N	N	N	N	N	N	N
Red Hat Enterprise Linux 6.9	N	N	N	N	N	N	N	N	N	N	N	N	N	N	N	N
Red Hat Enterprise Linux 7.3	N	N	N	N	N	N	N	N	N	N	N	N	N	N	N	N
Red Hat Enterprise Linux 7.4	N	N	N	N	N	N	N	N	N	N	N	N	N	N	N	N
Red Hat Enterprise Linux 7.5	N	N	N	N	N	N	N	N	N	N	Y	N	N	N	N	N
Red Hat Enterprise Linux 7.6	Y	N	Y	Y	Y	Y	Y	Y	Y	Y	Y	Y	Y	Y	Y	Y
Red Hat Enterprise Linux 7.7	Y	N	Y	Y	Y	Y	Y	Y	Y	Y	Y	Y	Y	Y	Y	Y
Red Hat Enterprise Linux 7.8	Y	N	Y	Y	Y	Y	Y	Y	Y	Y	Y	Y	Y	Y	Y	Y
Red Hat Enterprise Linux 7.9	Y	N	Y	Y	Y	Y	Y	Y	Y	Y	Y	Y	Y	Y	Y	Y
Red Hat Enterprise Linux 8.0	Y	N	Y	Y	Y	Y	Y	Y	Y	Y	Y	Y	Y	Y	Y	Y
Red Hat Enterprise Linux 8.1	Y	N	Y	Y	Y	Y	Y	Y	Y	Y	Y	Y	Y	Y	Y	Y
Red Hat Enterprise Linux 8.2	Y	N	Y	Y	Y	Y	Y	Y	Y	Y	Y	Y	Y	Y	Y	Y
Red Hat Enterprise Linux 8.3	Y	N	Y	Y	Y	Y	Y	Y	Y	Y	Y	Y	Y	Y	Y	Y
Red Hat Enterprise Linux 8.4	Y	N	Y	Y	Y	Y	Y	Y	Y	Y	Y	Y	Y	Y	Y	Y
Red Hat Enterprise Linux 8.5	Y	N	Y	Y	Y	Y	Y	Y	Y	Y	Y	Y	Y	Y	Y	Y
Red Hat Enterprise Linux 8.6	Y	N	Y	Y	Y	Y	Y	Y	Y	Y	Y	Y	Y	Y	Y	Y
SUSE Linux Enterprise Server 11 SP4	N	N	N	N	N	N	N	N	N	N	N	N	N	N	N	N
SUSE Linux Enterprise Server 11 SP4 with Xen	N	N	N	N	N	N	N	N	N	N	N	N	N	N	N	N
SUSE Linux Enterprise Server 12 SP2	N	N	N	N	N	N	N	N	N	N	N	N	N	N	N	N
SUSE Linux Enterprise Server 12 SP2 with Xen	N	N	N	N	N	N	N	N	N	N	N	N	N	N	N	N
SUSE Linux Enterprise Server 12 SP3	N	N	N	N	N	N	N	N	N	N	N	N	Y	N	N	N
SUSE Linux Enterprise Server 12 SP3 with Xen	N	N	N	N	N	N	N	N	N	N	N	N	Y	N	N	N
SUSE Linux Enterprise Server 12 SP4	Y	N	Y	Y	Y	Y	Y	Y	Y	Y	N	Y	Y	Y	Y	Y
SUSE Linux Enterprise Server 12 SP4 with Xen	Y	N	Y	Y	Y	Y	Y	Y	Y	Y	N	Y	Y	Y	Y	Y
SUSE Linux Enterprise Server 12 SP5	Y	N	Y	Y	Y	Y	Y	Y	Y	Y	Y	Y	Y	Y	Y	Y
SUSE Linux Enterprise Server 12 SP5 with Xen	Y	N	Y	Y	Y	Y	Y	Y	Y	Y	Y	Y	Y	Y	Y	Y
SUSE Linux Enterprise Server 15	Y	N	Y	Y	Y	Y	Y	Y	Y	Y	N	Y	Y	Y	Y	Y
SUSE Linux Enterprise Server 15 SP1	Y	N	Y	Y	Y	Y	Y	Y	Y	Y	Y	Y	Y	Y	Y	Y
SUSE Linux Enterprise Server 15 SP1 with Xen	Y	N	Y	Y	Y	Y	Y	Y	Y	Y	Y	Y	Y	Y	Y	Y
SUSE Linux Enterprise Server 15 SP2	Y	N	Y	Y	Y	Y	Y	Y	Y	Y	Y	Y	Y	Y	Y	Y
SUSE Linux Enterprise Server 15 SP2 with Xen	Y	N	Y	Y	Y	Y	Y	Y	Y	Y	Y	Y	Y	Y	Y	Y

	SD530 (Xeon Gen 2)	SD650 (Xeon Gen 2)	SN550 (Xeon Gen 2)	SN850 (Xeon Gen 2)	SR530 (Xeon Gen 2)	SR550 (Xeon Gen 2)	SR570 (Xeon Gen 2)	SR590 (Xeon Gen 2)	SR630 (Xeon Gen 2)	SR650 (Xeon Gen 2)	SR670 (Xeon Gen 2)	SR850 (Xeon Gen 2)	SR850P (Xeon Gen 2)	SR860 (Xeon Gen 2)	SR950 (Xeon Gen 2)	ST550 (Xeon Gen 2)
Operating systems																
SUSE Linux Enterprise Server 15 SP3	Y	N	Y	Y	Y	Y	Y	Y	Y	Y	Y	Y	Y	Y	Y	Y
SUSE Linux Enterprise Server 15 SP3 with Xen	Y	N	Y	Y	Y	Y	Y	Y	Y	Y	Y	Y	Y	Y	Y	Y
SUSE Linux Enterprise Server 15 with Xen	Y	N	Y	Y	Y	Y	Y	Y	Y	Y	N	Y	Y	Y	Y	Y
Ubuntu 22.04 LTS	Y	N	Y	Y	Y	Y	Y	Y	Y	Y	Y	Y	Y	Y	Y	Y
VMware vSphere Hypervisor (ESXi) 6.0 U3	N	N	N	N	N	N	N	N	N	N	N	N	N	N	N	N
VMware vSphere Hypervisor (ESXi) 6.5	N	N	N	N	N	N	N	N	N	N	N	N	N	N	N	N
VMware vSphere Hypervisor (ESXi) 6.5 U1	N	N	N	N	N	N	N	N	N	N	N	N	N	N	N	N
VMware vSphere Hypervisor (ESXi) 6.5 U2	Y	N	Y	Y	Y	Y	Y	Y	Y	Y	N	Y	Y	Y	Y	Y
VMware vSphere Hypervisor (ESXi) 6.5 U3	Y	N	Y	Y	Y	Y	Y	Y	Y	Y	N	Y	Y	Y	Y	Y
VMware vSphere Hypervisor (ESXi) 6.7	N	N	N	N	N	N	N	N	N	N	N	N	N	N	N	N
VMware vSphere Hypervisor (ESXi) 6.7 U1	Y	N	Y	Y	Y	Y	Y	Y	Y	Y	N	Y	Y	Y	Y	Y
VMware vSphere Hypervisor (ESXi) 6.7 U2	Y	N	Y	Y	Y	Y	Y	Y	Y	Y	N	Y	Y	Y	Y	Y
VMware vSphere Hypervisor (ESXi) 6.7 U3	Y	N	Y	Y	Y	Y	Y	Y	Y	Y	Y	Y	Y	Y	Y	Y
VMware vSphere Hypervisor (ESXi) 7.0	Y	N	Y	Y	Y	Y	Y	Y	Y	Y	Y	Y	Y	Y	Y	Y
VMware vSphere Hypervisor (ESXi) 7.0 U1	Y	N	Y	Y	Y	Y	Y	Y	Y	Y	Y	Y	Y	Y	Y	Y
VMware vSphere Hypervisor (ESXi) 7.0 U2	Y	N	Y	Y	Y	Y	Y	Y	Y	Y	Y	Y	Y	Y	Y	Y
VMware vSphere Hypervisor (ESXi) 7.0 U3	Y	N	Y	Y	Y	Y	Y	Y	Y	Y	Y	Y	Y	Y	Y	Y

¹ 1. This item is not a general stand-alone option for Lenovo ThinkSystem SD650 (Xeon SP Gen 2), M/T 7X58 (Xeon SP Gen 2). 2. For OS support matrix, pls refer to LeSI Best Recipe. 3. This item shall be installed/removed by Lenovo support rep only.

Table 24. Operating system support for ThinkSystem M.2 with Mirroring Enablement Kit, 7Y37A01093 (Part 2 of 2)

	SD530 (Xeon Gen 1)	SD650 (Xeon Gen 1)	SN550 (Xeon Gen 1)	SN850 (Xeon Gen 1)	SR530 (Xeon Gen 1)	SR550 (Xeon Gen 1)	SR570 (Xeon Gen 1)	SR590 (Xeon Gen 1)	SR630 (Xeon Gen 1)	SR650 (Xeon Gen 1)	SR670 (Xeon Gen 1)	SR850 (Xeon Gen 1)	SR860 (Xeon Gen 1)	SR950 (Xeon Gen 1)	ST550 (Xeon Gen 1)
Operating systems															
For OS support info. please refer to LeSI Best Recipe.	N	Y ¹	N	N	N	N	N	N	N	N	N	N	N	N	N
Microsoft Windows Server 2012 R2	Y	N	Y	Y	Y	Y	Y	Y	Y	Y	N	Y	Y	Y	Y
Microsoft Windows Server 2016	Y	N	Y	Y	Y	Y	Y	Y	Y	Y	N	Y	Y	Y	Y
Microsoft Windows Server 2019	Y	N	Y	Y	Y	Y	Y	Y	Y	Y	N	Y	Y	Y	Y
Microsoft Windows Server version 1709	Y	N	Y	Y	Y	Y	Y	Y	Y	Y	N	Y	Y	Y	Y
Microsoft Windows Server version 1803	Y	N	Y	N	N	N	N	N	Y	Y	N	Y	Y	Y	N
Red Hat Enterprise Linux 6 Server x64 Edition	N	N	N	N	N	Y	N	N	N	N	N	N	N	N	N

	SD530 (Xeon Gen 1)	SD650 (Xeon Gen 1)	SN550 (Xeon Gen 1)	SN850 (Xeon Gen 1)	SR530 (Xeon Gen 1)	SR550 (Xeon Gen 1)	SR570 (Xeon Gen 1)	SR590 (Xeon Gen 1)	SR630 (Xeon Gen 1)	SR650 (Xeon Gen 1)	SR670 (Xeon Gen 1)	SR850 (Xeon Gen 1)	SR860 (Xeon Gen 1)	SR950 (Xeon Gen 1)	ST550 (Xeon Gen 1)
Operating systems															
Red Hat Enterprise Linux 6.10	Y	N	Y	Y	Y	Y	Y	Y	Y	Y	N	Y	Y	Y	Y
Red Hat Enterprise Linux 6.9	Y	N	Y	Y	Y	Y	Y	Y	Y	Y	N	Y	Y	Y	Y
Red Hat Enterprise Linux 7.3	Y	N	Y	Y	Y	Y	N	N	Y	Y	N	Y	N	Y	Y
Red Hat Enterprise Linux 7.4	Y	N	Y	Y	Y	Y	Y	Y	Y	Y	N	Y	Y	Y	Y
Red Hat Enterprise Linux 7.5	Y	N	Y	Y	Y	Y	Y	Y	Y	Y	Y	Y	Y	Y	Y
Red Hat Enterprise Linux 7.6	Y	N	Y	Y	Y	Y	Y	Y	Y	Y	Y	Y	Y	Y	Y
Red Hat Enterprise Linux 7.7	Y	N	Y	Y	Y	Y	Y	Y	Y	Y	Y	Y	Y	Y	Y
Red Hat Enterprise Linux 7.8	Y	N	Y	Y	Y	Y	Y	Y	Y	Y	Y	Y	Y	Y	Y
Red Hat Enterprise Linux 7.9	Y	N	Y	Y	Y	Y	Y	Y	Y	Y	Y	Y	Y	Y	Y
Red Hat Enterprise Linux 8.0	Y	N	Y	Y	Y	Y	Y	Y	Y	Y	Y	Y	Y	Y	Y
Red Hat Enterprise Linux 8.1	Y	N	Y	Y	Y	Y	Y	Y	Y	Y	Y	Y	Y	Y	Y
Red Hat Enterprise Linux 8.2	Y	N	Y	Y	Y	Y	Y	Y	Y	Y	Y	Y	Y	Y	Y
Red Hat Enterprise Linux 8.3	Y	N	Y	Y	Y	Y	Y	Y	Y	Y	Y	Y	Y	Y	Y
Red Hat Enterprise Linux 8.4	Y	N	Y	Y	Y	Y	Y	Y	Y	Y	Y	Y	Y	Y	Y
Red Hat Enterprise Linux 8.5	Y	N	Y	Y	Y	Y	Y	Y	Y	Y	Y	Y	Y	Y	Y
Red Hat Enterprise Linux 8.6	Y	N	Y	Y	Y	Y	Y	Y	Y	Y	Y	Y	Y	Y	Y
SUSE Linux Enterprise Server 11 SP4	Y	N	Y	Y	Y	Y	Y	Y	Y	Y	N	Y	Y	Y	Y
SUSE Linux Enterprise Server 11 SP4 with Xen	Y	N	Y	Y	Y	Y	Y	Y	Y	Y	N	Y	Y	Y	Y
SUSE Linux Enterprise Server 12 SP2	Y	N	Y	Y	Y	Y	N	N	Y	Y	N	Y	N	Y	Y
SUSE Linux Enterprise Server 12 SP2 with Xen	Y	N	Y	Y	Y	Y	N	N	Y	Y	N	Y	N	Y	Y
SUSE Linux Enterprise Server 12 SP3	Y	N	Y	Y	Y	Y	Y	Y	Y	Y	N	Y	Y	Y	Y
SUSE Linux Enterprise Server 12 SP3 with Xen	Y	N	Y	Y	Y	Y	Y	Y	Y	Y	N	Y	Y	Y	Y
SUSE Linux Enterprise Server 12 SP4	Y	N	Y	Y	Y	Y	Y	Y	Y	Y	N	Y	Y	Y	Y
SUSE Linux Enterprise Server 12 SP4 with Xen	Y	N	Y	Y	Y	Y	Y	Y	Y	Y	N	Y	Y	Y	Y
SUSE Linux Enterprise Server 12 SP5	Y	N	Y	Y	Y	Y	Y	Y	Y	Y	Y	Y	Y	Y	Y
SUSE Linux Enterprise Server 12 SP5 with Xen	Y	N	Y	Y	Y	Y	Y	Y	Y	Y	Y	Y	Y	Y	Y
SUSE Linux Enterprise Server 15	Y	N	Y	Y	Y	Y	Y	Y	Y	Y	N	Y	Y	Y	Y
SUSE Linux Enterprise Server 15 SP1	Y	N	Y	Y	Y	Y	Y	Y	Y	Y	Y	Y	Y	Y	Y
SUSE Linux Enterprise Server 15 SP1 with Xen	Y	N	Y	Y	Y	Y	Y	Y	Y	Y	Y	Y	Y	Y	Y
SUSE Linux Enterprise Server 15 SP2	Y	N	Y	Y	Y	Y	Y	Y	Y	Y	Y	Y	Y	Y	Y
SUSE Linux Enterprise Server 15 SP2 with Xen	Y	N	Y	Y	Y	Y	Y	Y	Y	Y	Y	Y	Y	Y	Y
SUSE Linux Enterprise Server 15 SP3	Y	N	Y	Y	Y	Y	Y	Y	Y	Y	Y	Y	Y	Y	Y
SUSE Linux Enterprise Server 15 SP3 with Xen	Y	N	Y	Y	Y	Y	Y	Y	Y	Y	Y	Y	Y	Y	Y
SUSE Linux Enterprise Server 15 with Xen	Y	N	Y	Y	Y	Y	Y	Y	Y	Y	N	Y	Y	Y	Y
Ubuntu 22.04 LTS	Y	N	Y	Y	Y	Y	Y	Y	Y	Y	Y	Y	Y	Y	Y
VMware vSphere Hypervisor (ESXi) 6.0 U3	Y	N	Y	Y	Y	Y	Y	Y	Y	Y	N	Y	Y	Y	Y

	SD530 (Xeon Gen 1)	SD650 (Xeon Gen 1)	SN550 (Xeon Gen 1)	SN850 (Xeon Gen 1)	SR530 (Xeon Gen 1)	SR550 (Xeon Gen 1)	SR570 (Xeon Gen 1)	SR590 (Xeon Gen 1)	SR630 (Xeon Gen 1)	SR650 (Xeon Gen 1)	SR670 (Xeon Gen 1)	SR850 (Xeon Gen 1)	SR860 (Xeon Gen 1)	SR950 (Xeon Gen 1)	ST550 (Xeon Gen 1)
Operating systems															
VMware vSphere Hypervisor (ESXi) 6.5	Y	N	Y	Y	Y	Y	N	N	Y	Y	N	Y	N	Y	Y
VMware vSphere Hypervisor (ESXi) 6.5 U1	Y	N	Y	Y	Y	Y	Y	Y	Y	Y	N	Y	Y	Y	Y
VMware vSphere Hypervisor (ESXi) 6.5 U2	Y	N	Y	Y	Y	Y	Y	Y	Y	Y	N	Y	Y	Y	Y
VMware vSphere Hypervisor (ESXi) 6.5 U3	Y	N	Y	Y	Y	Y	Y	Y	Y	Y	N	Y	Y	Y	Y
VMware vSphere Hypervisor (ESXi) 6.7	Y	N	Y	Y	Y	Y	Y	Y	Y	Y	N	Y	Y	Y	Y
VMware vSphere Hypervisor (ESXi) 6.7 U1	Y	N	Y	Y	Y	Y	Y	Y	Y	Y	N	Y	Y	Y	Y
VMware vSphere Hypervisor (ESXi) 6.7 U2	Y	N	Y	Y	Y	Y	Y	Y	Y	Y	N	Y	Y	Y	Y
VMware vSphere Hypervisor (ESXi) 6.7 U3	Y	N	Y	Y	Y	Y	Y	Y	Y	Y	Y	Y	Y	Y	Y
VMware vSphere Hypervisor (ESXi) 7.0	Y	N	Y	Y	Y	Y	Y	Y	Y	Y	Y	Y	Y	Y	Y
VMware vSphere Hypervisor (ESXi) 7.0 U1	Y	N	Y	Y	Y	Y	Y	Y	Y	Y	Y	Y	Y	Y	Y
VMware vSphere Hypervisor (ESXi) 7.0 U2	Y	N	Y	Y	Y	Y	Y	Y	Y	Y	Y	Y	Y	Y	Y
VMware vSphere Hypervisor (ESXi) 7.0 U3	Y	N	Y	Y	Y	Y	Y	Y	Y	Y	Y	Y	Y	Y	Y

¹ 1. This item is not a general stand-alone option for Lenovo ThinkSystem SD650 (M/T 7X58). 2. For OS support matrix, pls refer to LeSI Best Recipe. 3. This Item shall be installed/removed by Lenovo support rep only.

Table 25. Operating system support for ThinkSystem M.2 SATA 2-Bay RAID Adapter, 4Y37A09739

Operating systems	SN550 V2	SR630 V2	SR650 V2	SR670 V2	SR860 V2	ST650 V2	SR635	SR645	SR655	SR665
Microsoft Windows Server 2016	Y	Y	Y	Y	Y	Y	Y	Y	Y	Y
Microsoft Windows Server 2019	Y	Y	Y	Y	Y	Y	Y	Y	Y	Y
Red Hat Enterprise Linux 7.6	N	N	N	N	N	N	Y ¹	Y ¹	Y ¹	Y ¹
Red Hat Enterprise Linux 7.7	N	N	N	N	N	N	Y ¹	Y ¹	Y ¹	Y ¹
Red Hat Enterprise Linux 7.8	N	N	N	N	N	N	Y ¹	Y ¹	Y ¹	Y ¹
Red Hat Enterprise Linux 7.9	Y	Y	Y	Y	Y	Y	Y ¹	Y ¹	Y ¹	Y ¹
Red Hat Enterprise Linux 8.0	N	N	N	N	N	N	Y ¹	N	Y ¹	N
Red Hat Enterprise Linux 8.1	N	N	N	N	N	N	Y ¹	Y ¹	Y ¹	Y ¹
Red Hat Enterprise Linux 8.2	Y	Y	Y	Y	Y	Y	Y ¹	Y ¹	Y ¹	Y ¹
Red Hat Enterprise Linux 8.3	Y	Y	Y	Y	Y	Y	Y	Y	Y	Y
Red Hat Enterprise Linux 8.4	Y	Y	Y	Y	Y	Y	Y	Y	Y	Y
Red Hat Enterprise Linux 8.5	Y	Y	Y	Y	Y	Y	Y	Y	Y	Y
Red Hat Enterprise Linux 8.6	Y	Y	Y	Y	Y	Y	Y	Y	Y	Y
SUSE Linux Enterprise Server 12 SP5	Y	Y	Y	Y	Y	Y	Y	Y	Y	Y
SUSE Linux Enterprise Server 12 SP5 with Xen	Y	Y	Y	Y	Y	Y	Y	Y	Y	Y
SUSE Linux Enterprise Server 15 SP1	N	N	N	N	N	N	Y ¹	Y ¹	Y ¹	Y ¹
SUSE Linux Enterprise Server 15 SP1 with Xen	N	N	N	N	N	N	Y ¹	Y ¹	Y ¹	Y ¹
SUSE Linux Enterprise Server 15 SP2	Y	Y	Y	Y	Y	Y	Y	Y	Y	Y
SUSE Linux Enterprise Server 15 SP2 with Xen	Y	Y	Y	Y	Y	Y	Y	Y	Y	Y
SUSE Linux Enterprise Server 15 SP3	Y	Y	Y	Y	Y	Y	Y	Y	Y	Y
SUSE Linux Enterprise Server 15 SP3 with Xen	Y	Y	Y	Y	Y	Y	Y	Y	Y	Y
Ubuntu 18.04.5 LTS	Y	Y	Y	Y	N	Y	N	N	N	N
Ubuntu 20.04 LTS	N	Y	Y	N	N	N	N	N	N	N
Ubuntu 22.04 LTS	Y	Y	Y	Y	Y	Y	Y	Y	Y	Y
VMware vSphere Hypervisor (ESXi) 6.7 U3	Y	Y	Y	Y	N	Y	Y	Y	Y	Y
VMware vSphere Hypervisor (ESXi) 7.0	N	N	N	N	N	N	Y ¹	Y ¹	Y ¹	Y ¹
VMware vSphere Hypervisor (ESXi) 7.0 U1	N	N	N	N	Y	N	Y ¹	Y	Y ¹	Y
VMware vSphere Hypervisor (ESXi) 7.0 U2	Y	Y	Y	Y	Y	Y	Y	Y	Y	Y
VMware vSphere Hypervisor (ESXi) 7.0 U3	Y	Y	Y	Y	Y	Y	Y	Y	Y	Y

¹ The OS is not supported with EPYC 7003 processors.

Table 26. Operating system support for ThinkSystem M.2 NVMe 2-Bay RAID Adapter, 4Y37A09750 (Part 1 of 2)

Operating systems	SR630 V3 (4th Gen Xeon)	SR630 V3 (5th Gen Xeon)	SR635 V3	SR645 V3	SR650 V3 (4th Gen Xeon)	SR650 V3 (5th Gen Xeon)	SR655 V3	SR665 V3	SR675 V3	SR850 V3	SR860 V3	SR950 V3	ST650 V3	SN550 V2	SR630 V2	SR650 V2	SR670 V2	SR860 V2	ST650 V2
Microsoft Windows Server 2016	N	N	N	N	N	N	N	N	N	N	N	N	N	Y	Y	Y	Y	Y	Y
Microsoft Windows Server 2019	Y ¹	Y	Y	Y	Y ³	Y	Y	Y	Y	Y	Y	N	Y	Y	Y	Y	Y	Y	Y
Microsoft Windows Server 2022	Y	Y	Y	Y	Y	Y	Y	Y	Y	Y	Y	N	Y	Y	Y	Y	Y	Y	Y
Red Hat Enterprise Linux 7.7	N	N	N	N	N	N	N	N	N	N	N	N	N	N	N	N	N	N	N
Red Hat Enterprise Linux 7.8	N	N	N	N	N	N	N	N	N	N	N	N	N	N	N	N	N	N	N
Red Hat Enterprise Linux 7.9	N	N	N	N	N	N	N	N	N	N	N	N	N	Y	Y	Y	Y	Y	Y
Red Hat Enterprise Linux 8.1	N	N	N	N	N	N	N	N	N	N	N	N	N	N	N	N	N	N	N
Red Hat Enterprise Linux 8.2	N	N	N	N	N	N	N	N	N	N	N	N	N	Y	Y	Y	Y	Y	Y
Red Hat Enterprise Linux 8.3	N	N	N	N	N	N	N	N	N	N	N	N	N	Y	Y	Y	Y	Y	Y
Red Hat Enterprise Linux 8.4	N	N	N	N	N	N	N	N	N	N	N	N	N	Y	Y	Y	Y	Y	Y
Red Hat Enterprise Linux 8.5	N	N	N	N	N	N	N	N	N	N	N	N	N	Y	Y	Y	Y	Y	Y
Red Hat Enterprise Linux 8.6	Y ²	N	Y	Y	Y ¹	N	Y	Y	Y	Y	Y	Y	Y	Y	Y	Y	Y	Y	Y
Red Hat Enterprise Linux 8.7	Y	N	Y	Y	Y	N	Y	Y	Y	Y	Y	Y	Y	Y	Y	Y	Y	Y	Y
Red Hat Enterprise Linux 8.8	Y	Y	Y	Y	Y	Y	Y	Y	Y	Y	Y	Y	Y	Y	Y	Y	Y	Y	Y
Red Hat Enterprise Linux 8.9	Y	Y	Y	Y	Y	Y	Y	Y	Y	Y	Y	Y	Y	Y	Y	Y	Y	Y	Y
Red Hat Enterprise Linux 9.0	Y	N	Y	Y	Y	N	Y	Y	Y	Y	Y	Y	Y	Y	Y	Y	Y	Y	Y
Red Hat Enterprise Linux 9.1	Y	N	Y	Y	Y	N	Y	Y	Y	Y	Y	Y	Y	Y	Y	Y	Y	N	Y
Red Hat Enterprise Linux 9.2	Y	Y	Y	Y	Y	Y	Y	Y	Y	Y	Y	Y	Y	Y	Y	Y	Y	Y	Y
Red Hat Enterprise Linux 9.3	Y	Y	Y	Y	Y	Y	Y	Y	Y	Y	Y	Y	Y	Y	Y	Y	Y	Y	Y
SUSE Linux Enterprise Server 12 SP5	N	N	N	N	N	N	N	N	N	N	N	N	N	Y	Y	Y	Y	Y	Y
SUSE Linux Enterprise Server 12 SP5 with Xen	N	N	N	N	N	N	N	N	N	N	N	N	N	Y	Y	Y	Y	Y	Y
SUSE Linux Enterprise Server 15 SP1	N	N	N	N	N	N	N	N	N	N	N	N	N	N	N	N	N	N	N
SUSE Linux Enterprise Server 15 SP1 with Xen	N	N	N	N	N	N	N	N	N	N	N	N	N	N	N	N	N	N	N
SUSE Linux Enterprise Server 15 SP2	N	N	N	N	N	N	N	N	N	N	N	N	N	Y	Y	Y	Y	Y	Y
SUSE Linux Enterprise Server 15 SP2 with Xen	N	N	N	N	N	N	N	N	N	N	N	N	N	Y	Y	Y	Y	Y	Y
SUSE Linux Enterprise Server 15 SP3	N	N	N	N	N	N	N	N	N	N	N	N	N	Y	Y	Y	Y	Y	Y
SUSE Linux Enterprise Server 15 SP3 with Xen	N	N	N	N	N	N	N	N	N	N	N	N	N	Y	Y	Y	Y	Y	Y
SUSE Linux Enterprise Server 15 SP4	Y	N	Y	Y	Y	N	Y	Y	Y	Y	Y	Y	Y	Y	Y	Y	Y	Y	Y

Operating systems	SR630 V3 (4th Gen Xeon)	SR630 V3 (5th Gen Xeon)	SR635 V3	SR645 V3	SR650 V3 (4th Gen Xeon)	SR650 V3 (5th Gen Xeon)	SR655 V3	SR665 V3	SR675 V3	SR850 V3	SR860 V3	SR950 V3	ST650 V3	SN550 V2	SR630 V2	SR650 V2	SR670 V2	SR860 V2	ST650 V2
SUSE Linux Enterprise Server 15 SP4 with Xen	Y	N	Y	Y	Y	N	Y	Y	Y	Y	Y	Y	Y	Y	Y	Y	Y	Y	Y
SUSE Linux Enterprise Server 15 SP5	Y	Y	Y	Y	Y	Y	Y	Y	N	Y	Y	Y	Y	Y	Y	Y	Y	Y	Y
SUSE Linux Enterprise Server 15 SP5 with Xen	Y	Y	Y	Y	Y	Y	Y	Y	N	Y	Y	Y	Y	Y	Y	Y	Y	Y	Y
Ubuntu 18.04.5 LTS	N	N	N	N	N	N	N	N	N	N	N	N	N	Y	Y	Y	Y	N	Y
Ubuntu 20.04 LTS	N	N	N	N	N	N	N	N	N	N	N	N	N	N	Y	Y	N	N	N
Ubuntu 20.04.5 LTS	N	N	Y	Y	N	N	Y	Y	Y	Y ⁵	Y ⁵	N	N	N	N	N	N	N	N
Ubuntu 22.04 LTS	Y ³	N	Y	Y	Y ²	N	Y	Y	Y	Y ⁵	Y ⁵	N	Y	Y	Y	Y	Y	Y	Y
Ubuntu 22.04.3 LTS	N	Y	N	N	N	Y ⁴	N	N	N	N	N	N	N	N	N	N	N	N	N
VMware vSphere Hypervisor (ESXi) 6.7 U3	N	N	N	N	N	N	N	N	N	N	N	N	N	Y	Y	Y	Y	N	Y
VMware vSphere Hypervisor (ESXi) 7.0	N	N	N	N	N	N	N	N	N	N	N	N	N	N	N	N	N	N	N
VMware vSphere Hypervisor (ESXi) 7.0 U1	N	N	N	N	N	N	N	N	N	N	N	N	N	N	N	N	N	Y	N
VMware vSphere Hypervisor (ESXi) 7.0 U2	N	N	N	N	N	N	N	N	N	N	N	N	N	Y	Y	Y	Y	Y	Y
VMware vSphere Hypervisor (ESXi) 7.0 U3	Y ¹	Y	Y	Y	Y ¹	Y	Y	Y	Y	Y	Y	N	Y	Y	Y	Y	Y	Y	Y
VMware vSphere Hypervisor (ESXi) 8.0	Y	N	Y	Y	Y	N	Y	Y	N	N	N	N	N	N	N	N	N	N	N
VMware vSphere Hypervisor (ESXi) 8.0 U1	Y	N	Y	Y	Y	N	Y	Y	Y	Y	Y	N	Y	N	N	N	N	N	N
VMware vSphere Hypervisor (ESXi) 8.0 U2	Y	Y	Y	Y	Y	Y	Y	Y	Y	Y	Y	Y	Y	Y	Y	Y	Y	Y	Y

¹ For limitation, please refer [Support Tip TT1104](#)

² For limitation, please refer [Support Tip TT1104](#) and [Support Tip TT1112](#) and [Support Tip TT1092](#)

³ For limitation, please refer [Support Tip TT1104](#) and [Support Tip TT1112](#)

⁴ OSE-4928 Tips : TT1844 ; OSE-177 Tips :TT1796

⁵ For limitation, please refer [Support Tip TT1777](#)

Table 27. Operating system support for ThinkSystem M.2 NVMe 2-Bay RAID Adapter, 4Y37A09750 (Part 2 of 2)

Operating systems	SR645	SR665
Microsoft Windows Server 2016	Y	Y
Microsoft Windows Server 2019	Y	Y
Microsoft Windows Server 2022	Y	Y
Red Hat Enterprise Linux 7.7	Y ¹	Y ¹
Red Hat Enterprise Linux 7.8	Y ¹	Y ¹
Red Hat Enterprise Linux 7.9	Y ¹	Y ¹

Operating systems	SR645	SR665
-------------------	-------	-------

Red Hat Enterprise Linux 8.1	Y ¹	Y ¹
Red Hat Enterprise Linux 8.2	Y ¹	Y ¹
Red Hat Enterprise Linux 8.3	Y	Y
Red Hat Enterprise Linux 8.4	Y	Y
Red Hat Enterprise Linux 8.5	Y	Y
Red Hat Enterprise Linux 8.6	Y	Y
Red Hat Enterprise Linux 8.7	Y	Y
Red Hat Enterprise Linux 8.8	Y	Y
Red Hat Enterprise Linux 8.9	Y	Y
Red Hat Enterprise Linux 9.0	Y	Y
Red Hat Enterprise Linux 9.1	Y	Y
Red Hat Enterprise Linux 9.2	Y	Y
Red Hat Enterprise Linux 9.3	Y	Y
SUSE Linux Enterprise Server 12 SP5	Y	Y
SUSE Linux Enterprise Server 12 SP5 with Xen	Y	Y
SUSE Linux Enterprise Server 15 SP1	Y ¹	Y ¹
SUSE Linux Enterprise Server 15 SP1 with Xen	Y ¹	Y ¹
SUSE Linux Enterprise Server 15 SP2	Y	Y
SUSE Linux Enterprise Server 15 SP2 with Xen	Y	Y
SUSE Linux Enterprise Server 15 SP3	Y	Y
SUSE Linux Enterprise Server 15 SP3 with Xen	Y	Y
SUSE Linux Enterprise Server 15 SP4	Y	Y
SUSE Linux Enterprise Server 15 SP4 with Xen	Y	Y
SUSE Linux Enterprise Server 15 SP5	Y	Y
SUSE Linux Enterprise Server 15 SP5 with Xen	Y	Y
Ubuntu 18.04.5 LTS	N	N
Ubuntu 20.04 LTS	N	N
Ubuntu 20.04.5 LTS	N	N
Ubuntu 22.04 LTS	Y	Y
Ubuntu 22.04.3 LTS	N	N
VMware vSphere Hypervisor (ESXi) 6.7 U3	Y	Y
VMware vSphere Hypervisor (ESXi) 7.0	Y ¹	Y ¹
VMware vSphere Hypervisor (ESXi) 7.0 U1	Y	Y
VMware vSphere Hypervisor (ESXi) 7.0 U2	Y	Y
VMware vSphere Hypervisor (ESXi) 7.0 U3	Y	Y
VMware vSphere Hypervisor (ESXi) 8.0	N	N
VMware vSphere Hypervisor (ESXi) 8.0 U1	N	N
VMware vSphere Hypervisor (ESXi) 8.0 U2	Y	Y

¹ The OS is not supported with EPYC 7003 processors.

Table 28. Operating system support for ThinkSystem SE350 M.2 SATA 4-Bay Data RAID Mirroring Enablement Kit, 4M17A37606

Operating systems	SE350
Microsoft Windows Server 2016	Y
Microsoft Windows Server 2019	Y
Microsoft Windows Server 2022	Y
Red Hat Enterprise Linux 7.6	Y
Red Hat Enterprise Linux 7.7	Y
Red Hat Enterprise Linux 7.8	Y
Red Hat Enterprise Linux 7.9	Y
Red Hat Enterprise Linux 8.1	Y
Red Hat Enterprise Linux 8.2	Y
Red Hat Enterprise Linux 8.3	Y
Red Hat Enterprise Linux 8.4	Y
Red Hat Enterprise Linux 8.5	Y
Red Hat Enterprise Linux 8.6	Y
Red Hat Enterprise Linux 9.0	Y
SUSE Linux Enterprise Server 15	Y
SUSE Linux Enterprise Server 15 SP1	Y
SUSE Linux Enterprise Server 15 SP1 with Xen	Y
SUSE Linux Enterprise Server 15 SP2	Y
SUSE Linux Enterprise Server 15 SP2 with Xen	Y
SUSE Linux Enterprise Server 15 SP3	Y
SUSE Linux Enterprise Server 15 SP3 with Xen	Y
SUSE Linux Enterprise Server 15 SP4	Y
SUSE Linux Enterprise Server 15 SP4 with Xen	Y
SUSE Linux Enterprise Server 15 SP5	Y
SUSE Linux Enterprise Server 15 SP5 with Xen	Y
SUSE Linux Enterprise Server 15 with Xen	Y
VMware vSphere Hypervisor (ESXi) 6.5 U2	Y
VMware vSphere Hypervisor (ESXi) 6.7 U2	Y
VMware vSphere Hypervisor (ESXi) 7.0	Y
VMware vSphere Hypervisor (ESXi) 7.0 U1	Y
VMware vSphere Hypervisor (ESXi) 7.0 U2	Y
VMware vSphere Hypervisor (ESXi) 7.0 U3	Y
VMware vSphere Hypervisor (ESXi) 8.0	Y
VMware vSphere Hypervisor (ESXi) 8.0 U1	Y
VMware vSphere Hypervisor (ESXi) 8.0 U2	Y

Warranty

The M.2 drives and M.2 adapters carry a one-year, customer-replaceable unit (CRU) limited warranty. When the drives and adapters are installed in a supported server, these drives assume the server's base warranty and any warranty upgrades.

Solid State Memory cells have an intrinsic, finite number of program/erase cycles that each cell can incur. As a result, each solid state device has a maximum amount of program/erase cycles to which it can be subjected. The warranty for Lenovo solid state drives (SSDs) is limited to drives that have not reached the maximum guaranteed number of program/erase cycles, as documented in the Official Published Specifications for the SSD product. A drive that reaches this limit may fail to operate.

Physical specifications

M.2 drives have the following dimensions and weight:

- 2242 form factor drives: 22 mm x 42 mm, 5 g
- 2280 form factor drives: 22 mm x 80 mm, 10 g

M.2 adapters have the following dimensions and weight:

- Single M.2 Adapter: 117 mm x 30 mm, 17 g
- Dual M.2 Adapter: 117 mm x 30 mm, 18 g

Related publications and links

For more information, see these resources:

- Human Factors Engineer Tim Meserth shows the Lenovo M.2 offering:
<https://www.youtube.com/watch?v=ibtMAHihTPw&list=PLLQclfVNrqze7qYOrEMPsuHqs4JEHi0aG&index=5>
- ThinkSystem SSD Portfolio Reference:
<https://lenovopress.com/lp1261-lenovo-thinksystem-ssd-portfolio#term=%2522M.2%2522&availability=Available>
- Lenovo ThinkSystem product publications:
<http://thinksystem.lenovofiles.com/help/index.jsp>
 - Quick Start
 - Rack Installation Guide
 - Setup Guide
 - Hardware Maintenance Manual
 - Messages and Codes Reference
 - Memory Population Reference
- ServerProven hardware compatibility:
<http://www.lenovo.com/us/en/serverproven>

Related product families

Product families related to this document are the following:

- [Drives](#)

Notices

Lenovo may not offer the products, services, or features discussed in this document in all countries. Consult your local Lenovo representative for information on the products and services currently available in your area. Any reference to a Lenovo product, program, or service is not intended to state or imply that only that Lenovo product, program, or service may be used. Any functionally equivalent product, program, or service that does not infringe any Lenovo intellectual property right may be used instead. However, it is the user's responsibility to evaluate and verify the operation of any other product, program, or service. Lenovo may have patents or pending patent applications covering subject matter described in this document. The furnishing of this document does not give you any license to these patents. You can send license inquiries, in writing, to:

Lenovo (United States), Inc.
8001 Development Drive
Morrisville, NC 27560
U.S.A.
Attention: Lenovo Director of Licensing

LENOVO PROVIDES THIS PUBLICATION "AS IS" WITHOUT WARRANTY OF ANY KIND, EITHER EXPRESS OR IMPLIED, INCLUDING, BUT NOT LIMITED TO, THE IMPLIED WARRANTIES OF NON-INFRINGEMENT, MERCHANTABILITY OR FITNESS FOR A PARTICULAR PURPOSE. Some jurisdictions do not allow disclaimer of express or implied warranties in certain transactions, therefore, this statement may not apply to you.

This information could include technical inaccuracies or typographical errors. Changes are periodically made to the information herein; these changes will be incorporated in new editions of the publication. Lenovo may make improvements and/or changes in the product(s) and/or the program(s) described in this publication at any time without notice.

The products described in this document are not intended for use in implantation or other life support applications where malfunction may result in injury or death to persons. The information contained in this document does not affect or change Lenovo product specifications or warranties. Nothing in this document shall operate as an express or implied license or indemnity under the intellectual property rights of Lenovo or third parties. All information contained in this document was obtained in specific environments and is presented as an illustration. The result obtained in other operating environments may vary. Lenovo may use or distribute any of the information you supply in any way it believes appropriate without incurring any obligation to you.

Any references in this publication to non-Lenovo Web sites are provided for convenience only and do not in any manner serve as an endorsement of those Web sites. The materials at those Web sites are not part of the materials for this Lenovo product, and use of those Web sites is at your own risk. Any performance data contained herein was determined in a controlled environment. Therefore, the result obtained in other operating environments may vary significantly. Some measurements may have been made on development-level systems and there is no guarantee that these measurements will be the same on generally available systems. Furthermore, some measurements may have been estimated through extrapolation. Actual results may vary. Users of this document should verify the applicable data for their specific environment.

© Copyright Lenovo 2024. All rights reserved.

This document, LP0769, was created or updated on April 9, 2024.

Send us your comments in one of the following ways:

- Use the online Contact us review form found at:
<https://lenovopress.lenovo.com/LP0769>
- Send your comments in an e-mail to:
comments@lenovopress.com

This document is available online at <https://lenovopress.lenovo.com/LP0769>.

Trademarks

Lenovo and the Lenovo logo are trademarks or registered trademarks of Lenovo in the United States, other countries, or both. A current list of Lenovo trademarks is available on the Web at <https://www.lenovo.com/us/en/legal/copytrade/>.

The following terms are trademarks of Lenovo in the United States, other countries, or both:

Lenovo®

ServerProven®

ThinkSystem®

The following terms are trademarks of other companies:

Intel® and Xeon® are trademarks of Intel Corporation or its subsidiaries.

Linux® is the trademark of Linus Torvalds in the U.S. and other countries.

Microsoft®, Windows Server®, and Windows® are trademarks of Microsoft Corporation in the United States, other countries, or both.

Other company, product, or service names may be trademarks or service marks of others.