

Laredo Theater Guild International
in cooperation with Texas A&M International University
College of Arts and Sciences • Department of Language and Literature
Presents

William
Shakespeare's

*The Taming of
the Shrew*

Featuring: Lexie DeAnda,
Richard Resendez, Casandra Canales
and Oliver Saenz
Directed by: John Maxstadt
Produced by: Joe Arciniega

TAMIU Center for the Fine and Performing Arts Theatre





March 25, 2010

Welcome to Laredo Theater Guild International's production of William Shakespeare's *The Taming of the Shrew*, presented in cooperation with TAMIU's College of Arts and Sciences, Department of Language and Literature.

On behalf of Laredo Theater Guild International (LTGI), we thank you for your continued support of our first full season of plays. We opened our 2009-2010 season in this very Theatre last October with a gala premiere, of the musical *Man of La Mancha* to standing ovations during its entire run. We then followed that this January with a sold out weekend of the thrilling drama, *Doubt: A Parable* in the Sam Johnson Experimental Theatre.

With *The Taming of the Shrew*, we are particularly excited to present Shakespeare's beautiful words spoken in live theater, as originally intended and optimally experienced. We are further thrilled to offer this play in its complete form, neither cut nor edited, including the Induction scene, that is frequently omitted in staged productions of this work. This is LTGI's very first attempt at Shakespeare, and the first full scale production in Laredo of Shakespeare's work in many years. The investment of time and effort required by everyone in this cast of all ages, proved well worth the effort to allow us to experience and present, most for the very first time, a truly timeless work of art.

LTGI exists as a 501c3 nonprofit community based theater organization in cooperation with TAMIU and Laredo Community College. We are committed to present quality theatrical productions within their fine performance venues, our primary goal being to do so while growing and developing the local performer, production, audience, and patron communities. Productions will include classical and contemporary dramas, comedies, musicals, and single performer shows, selected from Broadway, Off-Broadway and regional theater works.

As ever, we need and seek energetic members for our administrative, advisory, and artistic teams. We have also launched a patron drive toward solidifying our community support team, and we invite you to consider making a donation of any amount at all to support our productions and our Summer Arts Scholarship Programs. You can do this by leaving it for us at the box-office, or by mail to P.O. Box 451337, Laredo, TX 78045.

We thank our wonderful partners at TAMIU and LCC for allowing us this opportunity, and to all of you for your interest in Laredo Theater Guild International's production of William Shakespeare's *The Taming of the Shrew*.

Enjoy the show!

Joe Arciniega
Artistic Director and Co-Founder

Vernon Carroll
President, Board of Directors and Co-Founder



A Member of The Texas A&M University System

Dear Theatre-goer,

It is my great pleasure to welcome you to this Shakespearean celebration in our recently inaugurated and indeed impressive Texas A&M International University (TAMIU) Center for the Fine and Performing Arts Theatre.

Shakespeare has been absent from the Laredo stage for many years, perhaps decades. Thanks to the initiative of the Laredo Theater Guild International (LTGI), in conjunction with the College of Arts and Sciences' Department of Language and Literature and the whole TAMIU community, we are pleased to bring Shakespeare back to our city so that old and new generations alike may enjoy the art and the fun of the greatest writer in the English language.

With this delicious romantic comedy composed by the then-young playwright from Stratford-Upon-Avon, the LTGI and TAMIU inaugurate a series of presentations which hopefully will allow us all to rejoice with Shakespeare every year.

The Taming of the Shrew is a tale of love and marriage, comic, lighthearted and, I have no doubt, will delight you despite its controversial approach to women and matrimony. I am sure that the magic of the stage and Shakespeare's inimitable artistry will captivate you with an unforgettable and highly rewarding experience.

With my best wishes,

A handwritten signature in black ink that reads "Manuel Broncano". The signature is fluid and cursive, with a long horizontal stroke extending from the end of the name.

Dr. Manuel Broncano,
Professor and Chair,
Texas A&M International University
College of Arts and Sciences
Department of Language and Literature

DRAMATIS PERSONAE

CHRISTOPHER SLY, *a drunken tinker*
 A LORD
 Hostess of an Alehouse
 BARTHOLEMEW THE PAGE

*Persons in the
 Induction*

Gilberto Martínez Jr.
 Joe Arciniega
 Cindy Stewart
 Zachry Powell

BAPTISTA MINOLA, *a rich merchant of Padua*
 KATHERINE, *his elder daughter*
 BIANCA, *his younger daughter*

Julio Méndez
 Lexie De Anda
 Casandra Canales

PETRUCHIO, *suitor to Katherine*

Richard Reséndez

LUCENTIO
 HORTENSIO
 GREMIO (a Pantaloon)

Suitors to Bianca

Oliver Saenz
 René Méndez
 David Barnett

TRANIO (later disguised
 as Lucentio)
 BIONDELLO

Servants to Lucentio

Paul Chavez
 Alejandro Mejía

GRUMIO, *a servant to Petruchio*

Javier Valenciano

VINCENTIO, *a rich merchant of Pisa, Father to Lucentio*

Vernon Carroll

A WIDOW, *later married to Hortensio*
 A TAILOR

Tricia Cortez
 Andy Cantú

KATHERINE'S DUENNA
 BIANCA'S DUENNA

Alejandra Rodríguez
 Cindy Stewart

CURTIS
 NATHANIEL
 PHILLIP
 GREGORY
 JOSPEPH
 WALTER
 RAFE

More servants to Petruchio

John Maxstadt
 Derek Walker
 Louis Vera
 Manuel Garza
 Andy Cantú
 Carlos Cadena
 Kevin Jacaman

Servants, two Huntsmen, a Constable,
 a Messenger, a Lady, a Gentleman,
 a Haberdasher, two Watchmen

Jason Barrera, Andy Cantú, Carlos Cadena,
 Tricia Cortez, Manuel Garza, Kevin Jacaman,
 Michael Powell, Louis Vera, Derek Walker.

Artistic Staff and Production Support

Director	John Maxstadt
Producer	Joe Arciniega
Assistant Producer	Casandra Canales
Assistant Director	Carlyln Walker
Technical Director	Alberto Chavarría
Set Designer	John Maxstadt
Stage Manager	Carlyln Walker
Musical Supervisor	Mary Grace Carroll
Public Relations	TAMIU Office of Public Relations, Marketing and Information Services
Costume Designers	Anna Regalado (Ada's Lace), Ofelia de la Garza (Custom-Made Creations)
Costume Supervisors	Linda López Howland, Teena Arciniega
Costumer/Dressers	Ofelia de la Garza, Montserrat Guardiola, Kassandra Alemán, Natalie Guzmán
Sound Tech	Robert Batey
Light Tech	Alberto Chavarría
Stage Tech	Tony Elizondo, Noel Vela Jr.
Music/Musicians	VMT's John Reimund – Director (Introductory Music and Ovation Brass), Patrick E. Carroll (trumpet fanfares)
Production Photographer	Ana Clamont
Make-Up	Candy Walker, Verónica Garza
Prosthetics	Mike Castro (Morbid Mansion Studios)
Properties Mistress	Alicia Coronado
Properties Mistress's Assistants	Sam Johnson, Allie Howland, Montse Guardola, Henry Mejia, Diego Canales, Dario Delgado
Stage Decoration	Bill Wisner, Gil Rocha, Vernon Carroll
Set Construction	Donald F. Maxstadt, John Maxstadt, Vernon Carroll, Henry Mejia, Alejandro Mejía, Richard Reséndez, Oliver Saenz, David Barnett, Kevin Jacaman, Derek Walker, Zachry Powell, Zertuche Construction to Set Construction
Production Donors	Randy Blair, Dr. Joseph Crabtree, Vernon and Mary Grace Carroll, GT Designs, Charles Johnson and Javier García, Laredo Implement Co., Joe and Teena Arciniega, Maldonado's Fine Furniture, Xzibit Art, Eduardo Canales, Antonio and Sarita Coronado
House Management	Susie Alford, Linda Howland, Karen Mejia
Box Office and Tickets	Jennifer H. Beckelhymer, Teena Arciniega
Advance Ticket Sales	Foster's located at 1605 Del Mar Boulevard TAMIU Bookstore

Director's Notes

By John M. Maxstadt

This is a production of Shakespeare's *The Taming of the Shrew*, complete and uncut, from the definitive First Folio text. The Induction (the story of Christopher Sly and the Lord's practical joke on him), that is often cut, is included. To round out the story of the Induction, a brief scene has been added to the end of the play. The dialogue for this scene comes from *A Pleasant Conceited Historie, call'd the taming of a Shrew*, an anonymous work that many scholars believe was based on an earlier (performed but unpublished) version of Shakespeare's play. The idea of using Sly in his own person to play the Pedant in acts four and five is a novelty, though probably not original, but no dialogue has been added or changed to accommodate it.

There is no mention in Shakespeare's text of duennas for Katherine and Bianca, but all young ladies of that time and social class had them. Juliet's Nurse in *Romeo and Juliet* is a duenna, an older female chaperone entrusted to protect a young lady's innocence and reputation. Shakespeare clearly intended several unnamed servants to be present during the scenes set in Baptista's house, and provided very few stage directions in the First Folio texts on which to base their entrances and exits. No dialogue has been added or changed to accommodate the duennas, although each has been given a distinct character to play.

The main set of the play (the "box"), with its balcony on top, door in front, and stairs down the side, is intended to simulate the galleries and chambers above and to the sides of the main stage at Shakespeare's Globe Theater in London.



John Maxstadt is a familiar figure in Laredo theatre. With the LCC Opera Workshop, he has played Tevye in *Fiddler on the Roof*, Pooh-Bah in *The Mikado*, and many other roles. With LMTI, he has played the Tin Man in *The Wiz* and Mr. Bumble in *Oliver!* He directed the LLT production of *Arsenic and Old Lace*. He is a librarian and member of the faculty at TAMIU. He is also a member of the LTGI Board. He is the director the LTGI production of Shakespeare's *The Taming of the Shrew*.

The Cast



Lexie De Anda was born and raised in McAllen, Texas. She has always held an interest in acting and had been involved in theater since middle school. She was involved in both choir and drama clubs throughout high school receiving various awards and recognition at competitions. Lexie is currently a senior at TAMIU where she plans to earn her Bachelor degree. She is a lyric soprano studying voice under the direction of Dana Crabtree. She is delighted to have performed a multitude of roles in operatic, theater and musical theater genres while in the Rio Grande Valley and recently here in Laredo. Thanks to everyone involved with the production and support of Shakespeare's *Taming of the Shrew!* Great thanks for granting her the opportunity to portray yet another challenging character and continue pursuing what she loves most.



Richard A. Reséndez is a junior and full-time student at TAMIU enrolled in the College of Education pursuing a Bachelor of Science in Communication Disorders. He has been featured in previous roles such as "Matt" (*Dog Sees God: Confessions of a Teenage Blockhead*; Director: Casandra Canales) and "Max" (*Cabaret*; Director: Danny Villareal). Richard graduated from United High School and studied theatre under Diana Marcos. His favorite performers are Robert Downey Jr., Phillip Seymour Hoffman and Vincent Price.



Casandra Canales is a TAMIU student majoring in communication with a minor in English. She began participating in community theater productions at the age of 14. Her most recent credits include *Cabaret (LITE)*, *Doubt: A Parable (LTGI)* and *Dog Sees God: Confessions of a Teenage Blockhead (TTT)*, which she directed. She is currently an intern for the Laredo Theater Guild International. Casandra first came across the story of *The Taming of the Shrew* when she was a little girl thanks to the AMAZING HBO television se-

ries, *Shakespeare: The Animated Tales*. She is very happy to meet this story again after more than 10 years on stage and with a great cast.



Oliver Saenz is 20 years old. He was born in Laredo and graduated from United High School. Oliver currently attends LCC where he is majoring in journalism. Oliver has appeared in several productions such as *A Funny Thing Happened on the Way to the Forum*, *Cabaret*, and *Man of La Mancha*. Off stage he likes spend time working as a freelance cartoonist. He has seven toes on one foot.



Paul Chávez is a student at TAMIU. He enjoys performing on stage and bringing different characters to life. He has appeared in many plays since he started acting in junior high, and the theatre has become part of who he is. Paul joined the One Act Play competitions when he was a sophomore in high school where he received various awards such as honorable mention, four all star cast awards, five best actor awards, and a second place medal at the OAP State competition in Austin, Texas. His dream is to be able to take acting classes and go to school in London. After doing that Paul would like to become an actor and be in movies. He hopes to one day be able to travel the world and eventually make London his permanent home.



René J. Méndez II was born and raised in Laredo, Texas. He attended St. Augustine High School and has a BBA in management from TAMIU. René is also a singer/songwriter (The Reen) and recently released an acoustic EP. He is also preparing to record his self-titled debut album in Miami, Fla. Rene's previous roles include "The Guitar Player" in LTGI's production of *Man of La Mancha*, directed by Joe Flores, and "Guy" in Laredo Little Theatre's *Some Girl(s)*, directed by Karol Batey. René would like to thank God, his family, friends, LTGI for this wonderful opportunity, his fellow cast members for a wonderful experience

and their friendship, and all those who support the arts.



Julio A. Méndez Sr. is making his debut appearance. Never having acted before, he considers this a new artistic challenge. The fine arts director from LISD was born and raised in the small town of Rancho Boyeros, Cuba, only 11 miles from the city of Habana. Julio arrived in Miami, Fla. in 1961 where he briefly attended school and worked. He left to San Juan, Puerto Rico, on June 1966 where he received his high school diploma. After becoming a permanent resident of the United States he joined the army for three years, and he spent most of this time in El Paso, where he met his wife Martha with whom he had three children: Lily, Laura, and Jules Jr. Méndez received his BA in art education at UTEP, and after a year of teaching at El Paso he came to Laredo and became an art teacher at J.W. Nixon High from 1977 to 1997. After receiving his MS in school administration, Méndez became vice-principal at Nixon. In 2003 he transferred to the LISD Main Office and as of 2006 he holds the position of director of fine arts and UIL. He enjoys traveling with his love Debbie, golf and most notably all forms of art.



David Barnett is a sophomore at St. Augustine High School, and started acting over the summer where he played "Dallas" in *The Outsiders*. That was his debut play and he enjoyed it so much that, when he graduates, he wants to pursue a career in acting. So, you could look forward to seeing him in other plays.



Alejandro Mejía is an eighth grade student at United Middle School where he is a member of the drama club. He made his stage debut two years ago as the title character in LMTI's production of *Oliver!* Last summer he appeared in the Laredo Little Theater's production of *Annie*. This summer will be his second as part of Duke University's Talent Identification Program (TIP) at Appalachian State University in

Boone, N.C., where he will study science on the Appalachian Trail.



Javier Valenciano comes from a long lineage of musicians, and has been active in local musical groups for over 20 years, including the Laredo Philharmonic Chorale, church choirs, the LCC Show Band, and various local rock and blues bands. He has appeared in a variety of musical productions including *My Fair Lady* under the direction of Kathy Proffitt, *Do Black Patent Leather Shoes Always Reflect Up?* under the direction of Billy Craven, and *The Little Shop of Horrors* and *Guys and Dolls* under Dr. Joe Crabtree. Most recently he performed in *Man of La Mancha* under the direction of Joe Flores. He is married to Laura Valenciano, also a musician, and has two sons, ages three and seven who are well on their way to carrying on the musical traditions they have learned at home.



Vernon Carroll is a founding member and president of the board of directors of LTGI. Originally from Brady, Texas, he is a 1972 Master of Arts graduate of Texas State University where he also received his undergraduate degree. During his career, Mr. Carroll contributed to over 300 productions in capacities such as: producer, director, playwright, scenographer, lighting designer, technical director and actor. Prior to moving to Laredo in 1994, Carroll taught at Oliver Wendell Holmes High School in San Antonio, Texas Louisiana State University, Baton Rouge, La., Appalachian State University in Boone N.C. and Northwestern State University of Louisiana in Natchitoches, La. He designed scenery and lighting at Theatre Charlotte, North Carolina for five seasons. While at LSU, Carroll received an American College Theatre Festival award from the Kennedy Center in Washington D.C. He is a 2008 recipient of the Kruzzada Kultural Award. He is currently dean of theatre at the Vidal M. Treviño School of Communications and Fine Arts and adjunct professor of theatre at TAMIU. At LCC, he teaches theatre courses concurrent with LTGI annual summer musical. Many of Carroll's former students work in show business across the country from New York City

to Los Angeles. He is married to Dr. Mary Grace Galvan-Carroll. They have two children, Patrick and Kathryn. Both are musicians and theatre enthusiasts.



Alejandra G. Rodríguez a choral/vocal director at VMT, has been a thespian for many years acting, directing, choreographer, dancing, and light/tech crew. She participates in several community organizations such as Laredo Philharmonic Chorale, Laredo Little Theatre, International Good Neighbor Council, Ladies of the Red Hat, and was the choreographer for the Women's City Club "Dance with the Stars" for the past 2 years.



Cindy Rodríguez was bitten by the "theater bug" at an early age. Cindy participated in many Laredo Little Theater productions directed by Bro. Robert Warren in the late '70s and early '80s. Later, she was fortunate to be able to tour with The Young Americans group in Michigan. But, she confesses she's had the most fun appearing in the LMTI productions of *Oliver!* (as Widow Corney) and *Anything Goes*, and assisting as prop mistress for *Beauty and the Beast*. (Two of her sons played in the orchestra as well.) At TAMIU it was her honor to play "Donna" in the 2006 production of *The Taffetas*, alongside director and lead, Dana Crabtree. For Cindy it was a thrill to be in *Man of la Mancha*, which opened up TAMIU's newest venue this past fall. *The Taming of the Shrew* will be her first non-musical performance. She is excited to be working with such a talented cast! "Many thanks to my family and friends for your support ~ I love you!!! Lastly, my congratulations (and thanks) goes out to Laredo Theater Guild International. Your hard work and dedication to excellence truly makes every production a joy and a wonderful learning experience!," said Cindy.



Tricia Cortez is proud to partake in her first Shakespeare production, with a cameo as the Widow, and excited to be part of the Laredo Theater Guild. No stranger to the stage, she is a founding member of the busy Teatro Chicano de

Laredo, taking on numerous characters in original short plays, one of which included an over-the-top male cross dresser (*La Pinky Longlegs*). Other acting credits include *Path of Marigolds* (Frida Kahlo), *Anything Goes* (Reno Sweeney), *FAME!* (Ms. Sherman) and Neil Simon's *Hotel Suite* (Hannah Warren). She also completed a four-week acting "boot camp" class at the Acting Corps in Los Angeles. A San Antonio native, Tricia moved to Laredo in 2001. Her heart and passion remain firmly rooted in the creative arts. She is a self-taught vocalist who began singing as a senior at Princeton University where she joined a black gospel ensemble.

Tricia believes in the power of the stage. Long live the fine and performing arts !y que Viva Laredo! It's showtime, folks!



Gilberto Martínez Jr. was last seen in The LTGI's production of *West Side Story*, where he played Doc. Trained as an actor at Texas State University-San Marcos, Gil has spent the last few years directing plays at LCC where he has taught speech and drama courses since 2001. Some of the plays he has directed include *Hell Cab*, *Proof*, *Hotel Suite* as well as writing and directing his original work *Going Anywhere?* A founding member of the 331st Theatre Company, he hopes to return to theatre work full time, as soon as he finishes that dissertation which will be any day now... Any day! Gil is the son of the poet Gilberto Martínez-Valle and the wonderful Leticia Esquivel de Martínez, for whom he dedicates his performance (YES)!



Joe Arciniega is a former technology executive for Atari and Microsoft who returned his family to Laredo after 27 years in Los Angeles and Seattle. He was chief operating officer of Humongous Entertainment, a software game company, ultimately managing its sale to Atari. He followed that as president of an Internet commerce company through its IPO, and then completed his technology career as a partner-level executive with Microsoft. Arciniega is a Laredo theater veteran from the 1970's, and since his return to Laredo, he has been seen in *Arsenic and Old Lace*, Gore Vidal's *The Best*

Man, The Wiz, and most recently, as Quixote/Cervantes in *Man of La Mancha*. He is a graduate of the American Academy of Dramatic Arts in Los Angeles, and was a leading member of the AADA Repertory Company. He has served on various charity and business advisory boards, including audiences with government ministers in Japan and China on education issues. He has presided as a speaker for both the Hispanic and Black Congressional Caucuses in Washington D.C., on minority education, technology access for underserved minority communities, and on workplace diversity. Arciniega was also guest speaker and panelist for the Rainbow PUSH Conference in Silicon Valley with Jesse Jackson, the televised Newsweek/MSNBC Birmingham Summit on Diversity with Brian Williams, and the Chicago United Leadership Forum. He is a founding member and artistic director of LTGI and is on their board of directors. He is also a board member and on the executive council of the Laredo Philharmonic Orchestra. He and his wife Teena have four children. Arciniega is producer of this show, and is also playing the role of the Lord in the Induction scene.



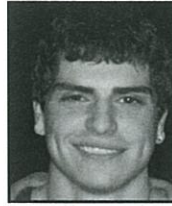
Manuel Garza is currently attending United High School's Engineering and Technology Magnet program, and is also a part time student at TAMU. He plans to pursue a career in law or psychology.

Manuel is a passionate musician and the drummer for the band Erebus. He also has a past with rough sports. Manuel is making his theatrical debut in *The Taming of the Shrew*.



Kevin Jacaman is currently a junior attending the United High School Engineering and Technology Magnet program. He is an active member of the National Honor Society and competes in UIL debate and

persuasive speaking events. Kevin is excited to make his theatrical debut in *The Taming of the Shrew*.



Derek Walker is a junior at United High School and is part of the Engineering and Technology Magnet program. He enjoys theater arts and is making his debut in *The Taming of the Shrew*.



Luis (Louie) Vera is a junior attending the United High School Engineering and Technology Magnet program. He sings and plays guitar in the local band Erebus. Louie plans to attend U.T. Austin and be

part of its music scene.



Carlos Cadena is 17 years old and a junior at the United High School Engineering and Technology Magnet program. Carlos plays bass in the local band Erebus. This is his first time performing in a play and

he is very excited to make his debut.



Andy Cantú has performed around Texas in various musical groups, playing multiple instruments. He is currently enrolled in the Engineering Magnet at United High School. He is very enthusiastic

about his first theatrical debut in *The Taming of the Shrew*.



Zachry Powell is a student from United High School Engineering and Technology Magnet. He is involved in National Honor Society, the LIFE Jr. board; he is vice president of Lone Star 4-H club, and contributes much of his community

service hours to the Laredo First Assembly of God, and the Stepping Stone. Not having much stage experience, Zachry is excited to be making his first theatrical debut in *The Taming of the Shrew*.

William Shakespeare's

The Taming of the Shrew

Drunken tinker Christopher Sly is kicked out of an alehouse and ends up sleeping in the road. A passing Lord decides to play a joke on him – has him taken up, dressed in finery, and waked in the Lord's own chamber surrounded by servants who convince him that he is himself a nobleman who has lost his memory. To divert Sly's attention from a page dressed up as his "lady," a company of players is brought in to present a play.

The play concerns wealthy merchant Baptista Minola and his two daughters, "the one as famous for a scolding tongue as is the other for beauteous modesty." Despairing of a suitor for the shrewish Katherine, Baptista nevertheless insists that she be engaged before he will entertain suitors for his younger daughter Bianca. He stalls Bianca's suitors, old Gremio and foppish Hortensio, by asking them to provide tutors for the education of both daughters.

Idealistic young Lucentio has meanwhile fallen in love with Bianca from afar. He plots with his servants (clever Tranio and bumbling Biondello) to install him in Baptista's house as a tutor, while Tranio masquerades as Lucentio and declares himself a suitor to Bianca. An old friend of Hortensio's, the worldly and confident Petruchio, arrives in Padua seeking a wife and a dowry. As Baptista has offered large dowries for both daughters, Petruchio determines to woo Katherine in spite of Hortensio's warnings, and Hortensio persuades Petruchio to present him (in disguise) as music teacher, so that he might court Bianca in person.

Calling at Baptista's house with the other suitors (including Tranio-as-Lucentio), Petruchio learns more about Katherine's character, and becomes increasingly attracted to her as a wife. Having satisfied himself that Petruchio and "Lucentio" are eligible suitors, Baptista insists that Petruchio gain Katherine's love before he will consent to the marriage. After a wild knockabout "courtship" with Katherine, Petruchio simply makes everyone's mind up for them and announces the engagement himself.

Tranio-as-Lucentio wins a bidding war with Gremio in which they both vie for Baptista's favor by making ever-greater promises of what Bianca will inherit in the event of her widowhood. Meanwhile, Bianca finds herself the object of romantic attention from both her "tutors" and quickly chooses Lucentio over the poorly-disguised Hortensio.

After making a farce of their wedding, Petruchio takes Katherine back to his family's estate in Verona, where he proceeds to "tame" her through theatrical bombast and slapstick violence (aimed always at Grumio and his other servants, never at her), privation and exhaustion (which he shares with her), and psychological maneuvering. Katherine, who has known no other way to behave and has no reason to like or trust men, finally submits and allows Petruchio to be husband and master of the household; and the two begin life on a new and happier footing.

Meanwhile, Tranio has recruited an unlikely passerby to pose as Lucentio's father, and Bianca has insisted that the real Lucentio elope with her. All these machinations come crashing down on the arrival of Lucentio's real father, wealthy merchant Vincentio, from Pisa. At Bianca's wedding feast, the guests, particularly Hortensio's new wife (the Widow), gossip about Katherine's shrewishness and the grim life Petruchio must be leading as her husband. To rescue Katherine's reputation, Petruchio proposes a wager to see which of the wives (Katherine, Bianca, or the Widow) is the most obedient. Katherine not only wins the wager with dignity and grace, but gains the admiration of all those present (even her father Baptista) as she lectures the other wives about their duty to their husbands.

William Shakespeare



For all his fame and celebration, William Shakespeare remains a mysterious figure with regards to personal history. There are just two primary sources for information on the Bard: his works, and various legal and church documents that have survived from Elizabethans. Naturally, there are many gaps in this body of information, which tells us little about Shakespeare the man.

William Shakespeare was born in Stratford-upon-Avon, allegedly on April 23, 1564. Young William was born of John Shakespeare, a glover and leather merchant, and Mary Arden, a landed local heiress. There is great conjecture about Shakespeare's childhood years, especially regarding his education. What is certain is that William Shakespeare never proceeded to university schooling, which has stirred some of the debate concerning the authorship of his works.

The next documented event in Shakespeare's life is his marriage to Anne Hathaway on November 28, 1582. William was 18 at the time, and Anne was 26—and pregnant. Their first daughter, Susanna, was born on May 26, 1583. The couple later had twins, Hamnet and Judith, born February 2, 1585. For the seven years following the birth of his twins, William Shakespeare disappears from all records, finally turning up again in London some time in 1592. This period, known as the “Lost Years,” has sparked as much controversy about Shakespeare's life as any period.

It is estimated that Shakespeare arrived in London around 1588 and began to establish himself as an actor and playwright. By 1594, he was not only acting and writing for the Lord Chamberlain's Men, but was a managing partner in the operation as well. The Lord Chamberlain's Men became a favorite London troupe, patronized by royalty and made popular by the theatre-going public.

Shakespeare's success is apparent when studied against other playwrights of this age. His company was the most successful in London in his day. He had plays published and sold in octavo editions, or “penny-copies” to the more literate of his audiences. Never before had a playwright enjoyed sufficient acclaim to see his works published and sold as popular literature in the midst of his career. While Shakespeare might not be accounted wealthy by London standards, his success allowed him to purchase [the estate known as] New House and retire in comfort to Stratford in 1611.

William Shakespeare allegedly died on his birthday, April 23, 1616. This is probably more of a romantic myth than reality, but Shakespeare was interred at Holy Trinity in Stratford on April 25. In 1623, two working companions of Shakespeare from the Lord Chamberlain's Men, John Heminges and Henry Condell, printed the *First Folio* edition of his collected plays, of which half were previously unpublished.

William Shakespeare's legacy is a body of work that will never again be equaled in Western civilization. His words have endured for 400 years, and still reach across the centuries as powerfully as ever.

SOURCE: Pressley, J. M. “An Encapsulated Biography.” *Shakespeare Resource Center*, February 10, 2005.

Laredo Theater Guild International Administration

Board of Directors

Joe Arciniega, Artistic Director
Vernon Carroll, President
Jennifer Haynes Beckelhymer, Treasurer
Linda López Howland, Secretary
John Maxstadt, Parliamentarian
Andy Alford
Susie Alford
Teena Beckelhymer Arciniega
Nancy Blair
Dr. Mary Grace Carroll
Deedee Diaz
Dortha Jackson
Samuel Johnson
Henry Mejía
Karen Mejía
Julio Mendez
Dr. Thomas Mitchell
Hortense Offerle
Verónica Ramírez
Carolyn Schmies
Carlyyn Walker

Advisors

Dr. Ray Keck III
Dr. Juan L. Maldonado
Melissa Barrera-González, San Antonio
Candy Hein
Bede Leyendecker
Suzy Mayo
Raul C. Staggs, Los Angeles
Susan Walker

Mission Statement

Laredo Theater Guild International (LTGI) is a regional theatrical organization serving South Texas, including the border communities of Laredo, Texas and Nuevo Laredo, Tamps. México. LTGI is organized and operated exclusively for cultural enrichment and educational purposes by:

- a) Sponsoring, administering and producing theater performances of the highest artistic level, which will encourage the cultural development and appreciation of theater within the community it serves.
- b) Working with educational institutions, arts organizations, as well as private and public entities to engender a spirit of professionalism which goes beyond theater to further enrich the community.

Laredo Theater Guild International is a 501c3 non-profit corporation, and is a member in good standing of the American Association of Community Theatres and Texans for the Arts.

Special Thanks to Zertuche Construction Co.

Thank you Laredo Theater Guild International Donors *

Sponsors - \$10,000+

Guadalupe and Lilia Martínez Foundation
Anonymous

Archangels - \$1000.00 - \$9,999.00

International Bank of Commerce
Joe and Teena Arciniega
Gloria A. Herrera and Family
Hortense R. Offerle
Mr. and Mrs. Frank M. Staggs

Angels - \$500.00 - \$999.00

Douglas and Linda L. Howland
Robert and Tami Summers

Champions - \$100.00 - \$499.00

Patricia O. Álvarez
Martha C. de Llano
Ardith Epstein
Diana García
Robert and Mary Freeman
Mr. and Mrs. Irving Greenblum
Carolyn Hendrick
Dr. Manuel A. Jovel
Elmo and Consuelo López
Shirley Hale Mathis
Escamilla & Poneck, Inc.
Triana Sames
Mr. and Mrs. José S. Treviño Jr.
Alicia Valdez
Senator Judith Zaffirini

Friends - Up to \$99.00

Annabelle Hall
Julia W. Jones
Stanley Keilson
Louis LaVaude
Kazen, Meurer & Perez, L.L.P.
Catherine Proffitt
Diana Ruweler
Suzanne M. Schafer
Asta W. Vega
Norma Nelly Vielma
William Wisner

* To join "The Guild" or to renew your support for the 2009-2010 year, please hand your potentially tax deductible donation to a cast or Board member, or mail donation to:

Laredo Theater Guild International
P.O. Box 451337
Laredo, Texas 78045

For more information, please call us at (956) 319-8610, or visit our website at laredotheaterguild.com

Autographs

Our shows would not be possible without the cooperation and support of our primary production partners:



Coming Soon

"Last Lists of my Mad Mother"

May 28, 2010

Special Benefit presentation for LTGI summer arts scholarship program and STAR Chapter Alzheimer's Association
TAMIU Center for the Fine and Performing Arts Theatre

Tickets generally available for presale at Foster's on 1605 Del Mar Boulevard two weeks prior to each show and at the TAMIU Bookstore.

For more information, please call 956.319.8610.

The Sound of Music

July 2010

TAMIU Center for the Fine and Performing Arts Theatre

Show times, dates and locations subject to change.

The Lion in Winter

October 2010

TAMIU Center for the Fine and Performing Arts Theatre

