



Smart Engineering

Design smarter with
products and solutions
from RS





Contents

- 5 IOT
- 7 Raspberry Pi
- 9 USB-C
- 11 Automotive
- 12 Robotics
- 13 Industrial Communication
- 14 Solar Power
- 15 Molex



NEED A QUOTE?

Enjoy super savings with our quotation service.

Contact us today to see how much you could save:

(852)2421 9898

onlinehelp.hk@rs-components.com

Terms & Conditions

To view our latest prices, charges and full terms see RS Conditions of Sale as set out online at au.rs-online.com. Prices correct at the time of going to print, prices exclude GST. Published by: RS Components Limited.

RS Components Ltd 2017.
RS are trademarks of RS Components Limited.
An Electrocomponents Company.

Join the conversation



Design smarter with products and solutions from RS

State-of-the-art components, plus the tools to help integrate them into your designs



RS brings you the latest innovations from leading brands like Raspberry Pi, Arduino, Intel, RS Pro, TE Connectivity and Molex. So whether you are developing IoT nodes or advanced robotics systems, you can incorporate the most up-to-date components and create intelligent solutions that set new standards in performance, efficiency and reliability.



Choose RS as your one-stop supplier for all your electronics components, and you will benefit from our massive choice of products, effortless ordering and rapid delivery. So you can get everything you need, right when you need it.

Extend your creative boundaries and speed up product development



Our online resource centre DesignSpark gives you free access to a range of specialist tools, like our PCB design software and parts library – helping you to accelerate the development cycle and bring your products to market faster. And you can connect with the DesignSpark community to share ideas and find new inspiration.



To be a smarter designer, visit hken.rs-online.com today.



Design Smarter for the Industrial IoT



The Internet of Things (IoT) is now a well-established concept, and it's already a major influence on many of the products we offer at RS.

Applications for IoT technology fall into two distinct groups. The first are those used by electronics designers, envisioning and creating connected or 'smart' devices, vehicles or buildings. These customers depend on us for access to the latest ideas and new technology, such as innovative wireless and Ethernet modules and chipsets.

The second group are those used by industrial engineers, who need IoT parts and devices because they're now working with technology that uses (or needs to be upgraded to) IoT connectivity.

Intelligent design

We can help design engineers by offering quick and easy access to the widest choice of WiFi, Ethernet and IoT gateway development boards in the market. These enable them to apply connectivity to existing electronics projects in a process that's structured, secure and - most importantly - simple.

They also find inspiration in our DesignSpark community, where they can source reference designs, join discussions and seek expert views.

Helping you embrace IoT

We continually explore the electronics sector and work closely with market-leading, innovative manufacturers to source the latest IoT parts and technology for both groups of engineers.

Our latest example is the brand new Siemens Simatic IOT2040, featured in our New Product Introductions on web site. It's an open, flexible IoT gateway that can retrieve, process, analyse and send data to almost any kind of device or network.

Ask us about the products we offer that could help you embrace the benefits of the connected world and IoT.

Making connections

To help industrial engineers update and connect their systems and machinery, we're continually expanding our portfolio of IoT solutions.

For example, many businesses have huge amounts of production data trapped inside existing systems. IoT gateways can access this data, enabling it to be unlocked and shared. These gateways are vitally important because industrial automation systems and IT infrastructures are complex, expensive assets. Companies can't simply throw them out and replace them with new smart versions.

We offer a suite of products that can release this data and harness it within ERP systems so that it becomes part of the organisation's 'big data' as it evolves into the world of IoT.



Wizard Gecko WiFi Module Wireless Starter Kit

- Wizard Gecko Starter Kit Features:
- Sensor: temperature, humidity, accelerometer
- UI: Display, buttons, LEDs, joystick
- PC connectivity: USB
- USB or battery powered



111-5839 Wifi Module Kit SLWSTK6120A

RN2483 LoRa Mote Development Node

- Features
- 868 MHz High-Frequency SMA Connector
- 433 MHz Low-Frequency Antenna test Point
- Ambient Light Sensor



912-5363 RN2483 LoRa Mote Development Node DM164138

RN2483 LoRa PICtail/ PICtail Plus Board

- Features
- Microchip RN2483 Low-Power Long Range, LoRa® Technology Transceiver Module
- SMA connectors for 433 MHz and 868 MHz bands
- PIC18 MCU with In-Circuit Serial Programming (ICSP) header for custom functions



904-8468 RN2483 LoRa PICtail/PICtail Plus Board RN-2483-PICTAIL

LORA RF Transceiver Module 16km 1272 SO

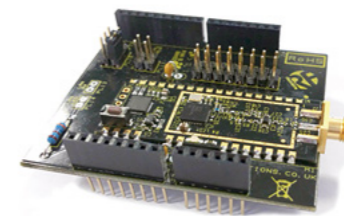
- RF Frequency Range: 868MHz ISM Band
- Channel bandwidth: 125kHz, 250kHz or 500kHz
- RF Power Output: up to +20dBm
- +14 dBm high efficiency PA
- Receiver Sensitivity: -119dBm @ 1.2kbps (FSK), -137dBm @ 240bps (LoRa, SF=12, CR=4/8)
- Modulation: FSK, GFSK, MSK, GMSK



903-3059 FM, FSK, GFSK, GMSK, MSK, OOK, RF-LORA-868-SO 1.8_3.6V

Arduino Shield for GAMMA LORA RF Module

- GAMMA-868 module
- RF Carrier Frequency: 869.5MHz ISM Band
- RF Power Output: +20dBm
- Receiver Sensitivity: -137dBm @ 240bps (SF=12, CR=4/8)
- LoRa™ spread-spectrum technology



903-3043 GAMMA-ARD GAMMA-ARD

SX1276 LoRa 169/868MHz Module Dev Tool

- SX1276 dual-band RF transceiver set up with operating frequencies of 169 and 868MHz
- LoRa™ Chirp Spread-Spectrum technology
- 128kbit serial I²C EEPROM
- PE4259 RF antenna switches
- I/O breakout header



922-5885 SX1276 LoRa 169/868MHz Module Dev Tool SX1276RF1IAS
 922-5889 SX1276 LoRa Bi-Band 433/868 MBED Shield SX1276MB1MAS
 922-5882 SX1276 LoRa 433/868MHz Module Dev Tool SX1276RF1JAS
 922-5873 SX1272 LoRa 868MHz RF Module Dev Tool SX1272RF1BAS

Arduino UNO Wifi Development Board

- Features :
- 14 digital I/O pins, 6 of which can be used for PWM outputs
- 6 analogue inputs
- 16 MHz ceramic resonator
- USB connection
- Power jack
- ICSP header
- Reset button



111-3737 Arduino UNO Wifi Development Board A000133

CC2650 SimpleLink™ Genuino 101 board powered by Intel

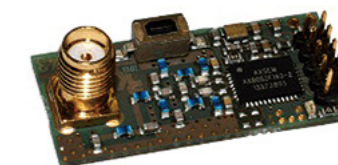
- Features :
- Powered by the Intel® Curie™ microcontroller
- 32-bit Intel® Quark™ microcontroller
- 384 kB flash memory
- 80 kB SRAM
- DSP sensor hub



913-9999 Genuino 101 board powered by Intel Genuino 101

AX-SIGFOX SoC Development Kit

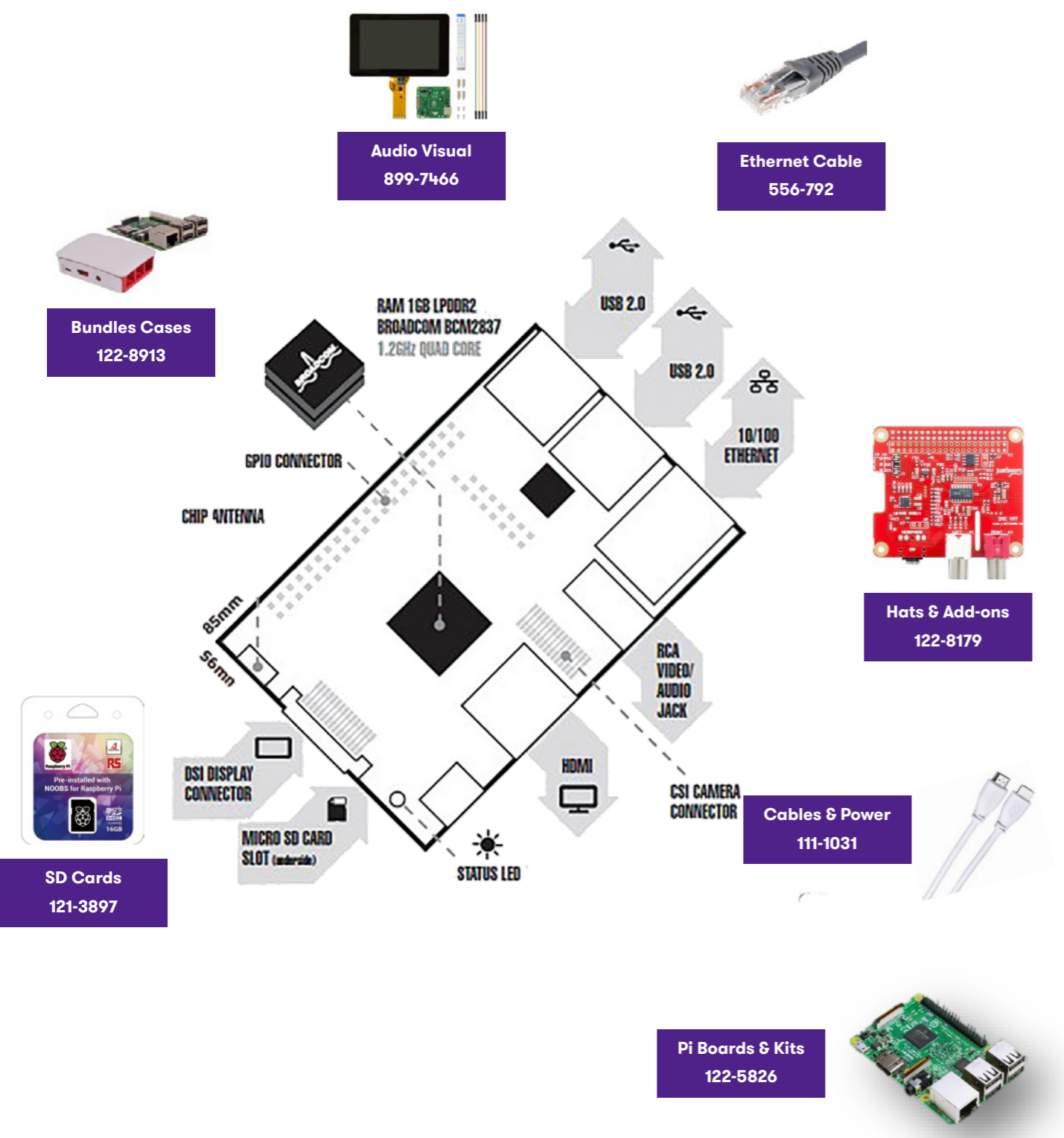
- Features :
- Transmitter Operating Frequency: 868.13MHz ISM Band
- RF Output Power: up to +14dBm, DBPSK
- Uplink OTA Data Rate: 100bps
- Receiver Operating Frequency: 869.525MHz ISM Band



914-4301 SoC Development Kit A000133

Small in size, big on performance

At RS we have everything you need to get started with your Raspberry Pi. From kits & bundles to accessories that will help you expand the existing functionality of your Raspberry Pi or learn how to implement the latest technologies into your next project or design



Raspberry Pi 3 Model B SBC

- Features & Benefits of the Pi 3 :
- Broadcom BCM2837 chipset running at 1.2 GHz
 - 64-bit quad-core ARM Cortex-A53
 - 802.11 b/g/n Wireless LAN
 - Bluetooth 4.1 (Classic & Low Energy)
 - Dual core Videocore IV® Multimedia co-processor
 - 1 GB LPDDR2 memory



896-8660 Pi 3 Model B SBC Raspberry Pi 3 Model B

Raspberry Pi 2 Model B

- The Raspberry Pi 2 B single computer board from the Raspberry Pi Foundation can help you learn about programming and computing or create exciting, innovative projects. T



8326274 Pi 2 Model B Raspberry Pi 2 Model B

Raspberry Pi Compute module 3

- The Raspberry Compute Modules 3 are suitable for designers who are happy with Raspberry Pi3 functionality but require a smaller form factor (67.6 mm x 31 mm) for their embedded designs.



123-2011 Pi Compute module 3 Compute Module 3
123-2013 Pi 3 compute module I/O Compute module 3 I/O
123-2011 Pi Compute Module Kit Compute Module Kit

Raspberry Pi 7" Touch Screen LCD (Bulk)

- Features & Benefits of the Pi LCD Touch Screen :
- Multi-touch capacitive touch screen — supports up to 10 finger touches
 - 7 inch display
 - 800 × 480 pixel resolution at 60 frames per second (fps)



111-5927 Pi 7" Touch Screen LCD (Bulk) Raspberry Pi Touchscreen
111-5551 Pi Camera Module V2-Bulk Camera Module Pi Camera Module V2-Bulk
111-5552 PiNoir Camera Module V2-Bulk Camera Module PiNoir Camera Module V2-Bulk
103-4299 Pi 3 B Case, Red, White TZT 241 AAA-01

SD Card preloaded with NOOBS - 16GB

- The latest version of NOOBS has been upgraded to enhance performance and user experience, using the Debian Jessie version of the Raspbian operating system.



121-3897 16 GB SD Card NOOBS_16GB_Retail
134-6703 16 GB SD Card NOOBS_16GB_Retail

Arduino Uno Starter Kits

- It's low-cost
- It's really easy to use
- It's Linux-based open source, with access to free software and downloads to help you with your project
- There's a great Pi community out there — check out Design Spark, RS's own design engineer community



811-1284 Pi Model B+ Raspberry Pi B+
833-2699 Pi Model A+ Raspberry Pi A+
830-0608 Pi Model B+ (Box of 150) Raspberry Pi B+

Raspberry Pi 3 Model B SBC (Bulk)

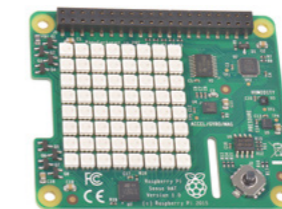
- Features & Benefits of the Pi 3 :
- Broadcom BCM2837 chipset running at 1.2 GHz
 - 64-bit quad-core ARM Cortex-A53
 - 802.11 b/g/n Wireless LAN
 - Bluetooth 4.1 (Classic & Low Energy)



896-8664 Pi 3 Model B SBC (Bulk) Raspberry Pi 3 Model B

Raspberry Pi Sense Hat

The Sense HAT from the folks at Raspberry Pi is an add-on board that fits perfectly on top of your Pi to provide you with plenty of sensing functionality.



894-9310 Pi Sense Hat Sense Hat
897-7141 Power Over Ethernet for Raspberry Pi Pi PoE Switch
897-7147 128 × 96 pixels, 200 × 96 pixels, 264 × 176 pixels PaPiRus Multi Screen
848-6806 Gertbot Robotics Board for Raspberry Pi Gertbot Pi

2.8in. LCD Starter Kit for Raspberry Pi

- PICASO 4DGL graphics controller
- 4D Systems Workshop 4 IDE software
- Variety of serial commands
- Power supply comes directly from the Pi

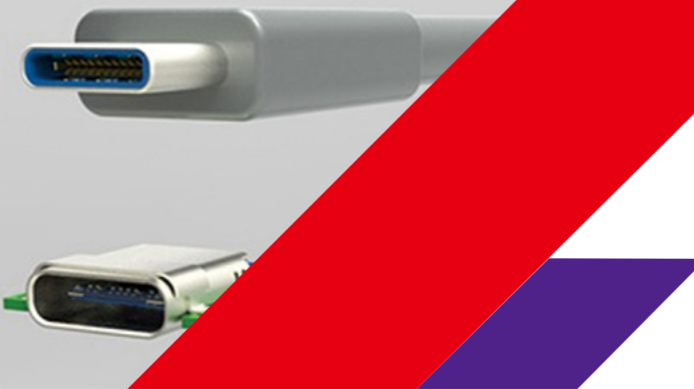


790-5707 2.8in. LCD Starter Kit for Raspberry Pi SK-28PTU-PI
790-5716 4.3in. LCD Starter Kit for Raspberry Pi SK-43PT-PI
124-9369 JustBoom DAC HAT & Amp HAT Amp HAT Case

USB-C

USB-C: the newest standard of USB connector available. With easier insertion, increased speed and power, USB-C will revolutionise every industry.

Looking for a USB-C connector, adaptor, or even an evaluation board to create your next design? RS have the USB-C products you need to keep you connected.



What is USB-C?

While it may seem as though the Universal Serial Bus (USB) has been around forever it was only designed in 1996 and has become the most used connection type in the Electronics industry. We use USB connections daily whether it be to connect keyboards and mice to computers, phones to chargers and USB memory sticks to laptops.

When you try and plug it in it's Always the other way round.

A USB-C connector works either way round.

Waiting for your photos to download.

USB-C data rates are considerably faster than earlier standards capable of over 10Gbps.

First plug in the power supply, then the USB cable...

Capable of handling the new Power Delivery standard (USB PD) USB-C able to be designed to transmit up to 100W.

It may be new but get ready to welcome USB-C cables and USB-C connectors to your computers, peripherals and future designs. Get ahead of the rest with the latest technology at RS Components.

Driving your USB-C solution

Take the step to make your next design USB-C compatible with solutions from Texas Instruments. Benefit from the higher data rates and power delivery of the USB-C specification with a range of evaluation modules to take the complexity out of the challenge.

Get to market faster and enjoy the benefits of USB-C



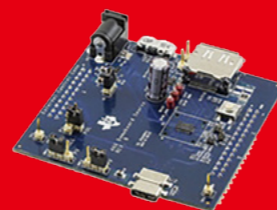
TUSB320EVM, for evaluating the TI TUSB320 USB-C port control and logic controller.

RS Stock Number: 9008839



TPS65982-EVM evaluation board is a complete reference design for USB-C and power delivery

RS Stock Number: 9008832



4 x 6 channel USB-C passive crosspoint switch evaluation module

RS Stock Number: 9008832



Cable to connect USB-A to USB-C devices, 2 metres, USB 2.0 compatible

RS Stock Number: 8950499



Through-hole PCB mounting USB Type-C Socket

RS Stock Number: 8950556



Cable to connect USB-C devices, 2 metres, USB 3.1 compatible

RS Stock Number: 8950492



USB Type-C Controller 5V QFN-16

Features :

- Provides easy transition from existing USB Type-A and USB Type-B ports to USB Type-C
- Simple route to introduce USB Type-C into new and existing designs
- Suitable for both Upstream and Downstream Ports
- USB Type-C cable connection and orientation detection



912-5268 4.5 → 5.5 V, 16-Pin QFN UTC2000/MG

Programmable USB Type-C Controller WLCSP

The USB Controller performs USB Type-C detection including attach and orientation. The FUSB300C automates VBUS threshold detection as well as the various charging current levels. Integrated is a VCONN power switch.

- Dual Role Port (DRP)
- Downstream Facing Port (DFP)
- Upstream Facing Port (UFP)



903-4241 3 → 3.5 V, 9-Pin WLCSP FUSB300CUCX

TYPE C MALE TO TYPE C MALE 2 MTR

- Multifunction USB, power and AV
- Flippable and reversible
- Improved EMI performance



895-0492 Male USB C to Male USB C, 2m USB C USBTC102

PCB MOUNT TYPE C FEMALE

- Gender : Female
- Termination Method : Solder
- Body Orientation : Right Angle
- Contact Material : Silver
- Mounting Type : PCB Mount
- Number of Ports : 24



895-0556 USB Connector Receptacle, PCB Mount USBTC127

USB 2.0 TYPE A M TO C M 2MTR

- Length : 2m
- USB Type : USB 2.0
- Connector A : Male USB C
- Connector B : Male USB A
- Sheath Colour : Black
- Outer Sheath Material : PVC
- Voltage Rating : 100 V ac



895-0499 Male USB C to Male USB A, 2m USB 2.0 USBTC108

USB C right angle SMD receptacle

- Gender : Female
- Termination Method : Solder
- Body Orientation : Right Angle
- Contact Material : Copper Alloy
- Mounting Type : Surface Mount



920-9199 USB Connector Receptacle Surface Mount 105450-0101

USB 3.1 Type C Receptacle Mid-mount

Features and Benefits :

- Backward compatibility to other USB devices when used with adapters and cables
- Delivers data, power audio/video through a single connection
- Increase power capability up to 100 W at 20 V



909-7110 USB Connector Receptacle, PCB Mount 2129691-1

USB 3.0 A F TO C M ADAPTER

- Connector A : USB 3.1A Type Female
- Connector B : USB 3.1 C Type Male
- Connector A : Gender Female
- Connector B : Gender Male



895-0528 Network Adapter Female Male USBTC117

USB 3.0 A F TO C M 0.15MTR

- Length : 150mm
- USB Type : USB 3.0
- Connector A : Female USB A
- Connector B : Male USB C
- Sheath Colour : Black
- Voltage Rating : 100 V dc

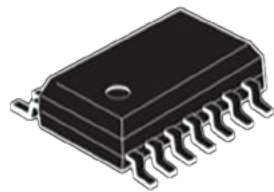


895-0515 Female USB A to Male USB C, TC 3.0 AF-CM 150mm USB 3.0



LIGHTS & SIGNALLING

MORE PRODUCTS



CAN Controller

Controller Area Network (CAN) bus controllers are widely used as interface controllers for connecting the many electronic control units (ECUs) with their subsystem electronic components to enable vehicle communication and functionality.

6 Reasons Why Automotive Components Aren't Just For Cars

Automotive components are designed for the harshest operating environments which makes them supremely robust. So it makes sense to incorporate these components into non-automotive applications too, taking advantage of the extra performance capabilities.

Here's why:

1. **Robust and secure:** vehicle components have a tough life. They need to cope with huge variations in temperature, as well as constant vibrations and continue working under the most extreme climates in the world.
2. **Lightweight:** vehicles and their systems must be kept as lightweight as possible to maximise the useful load they can carry. Therefore manufacturers of automotive components aim to keep them small and lightweight to reduce their impact on the completed vehicle design. Small, lightweight components are useful in many other applications.
3. **Waterproof:** vehicle components, particularly switches and connectors, have to withstand splashing – or even full immersion in water. This means waterproofing is at the heart of automotive component design and special techniques such as multi-shot moulding of integrated seals have been developed to cope with automotive demands. Electronics products are potted or boxed to achieve this.
4. **Mass produced:** because components designed for automotive use are often produced in their millions, users for non-automotive applications also benefit in a number of ways, including easy availability, economies of scale, availability of tooling and familiarity with installation/construction/termination techniques.
5. **Certification:** automotive components are subject to stringent tests and approvals. If a component has automotive approval, it is a guarantee of performance. It means the product has been shaken, bashed, prodded, baked, splashed, frozen and generally abused, and still works just fine!
6. **Latest innovations:** the speed in which product developments take place is increased in the automotive component manufacturing sector due to a much bigger focus on (and investment in) research and development activities. These advanced products are often adopted into other relevant areas, such as lower power BLDC motor drives that are benefitting many applications which were initially developed for the electric vehicle market.



Supersal 1.5 2 way plug housing

Features and Benefits :

- Waterproof exceeding IP67
- Proven sealing reliability
- Designed for under-hood environments
- Suitable for powertrain, security, and body & chassis systems



314-1198 2 Way Cable Mount Socket Connector 282080-1

2W R/A HVIL Connector

Features and Benefits:

- Light Weight Plastic Shell
- Durability of 500 mating cycles.
- Touch Proof (UL 2251)
- UL 94V-0
- HVIL



Amphenol

123-7556 3 Way Cable Mount, Panel Mount Automotive Electrical Connector UPC P 012A LS2

DT15, 6 way header

Features and Benefits :

- Environmentally sealed connector
- Rugged thermoplastic connector housing
- Operating temp range -55 to +125 °C
- Moulded in solid copper alloy contacts
- Mates with DT06 Series connector plugs



724-2539 4.44mm Pitch 6 Way 2 Row Straight PCB Header DT15-6P

High Current Relay 150

Features and Benefits :

- High current automotive relay 150A
- M6 screw terminal load connections
- Heat, moisture and vibration resistant
- Minimal contact resistance
- Ambient temperature - 40 to +125°C
- Dimensions: W84 x D40 x H45mm



763-1468 24V dc Coil, 300 A V23132B2002A200 1393315-9

16mm secret until lit LED

Features and Benefits :

- 16 mm panel mounting LED indicator
- Flush bezel style
- Plated brass bezel finished in black chrome
- 12 V dc
- IP67 sealed



APEM

121-3303 16 Dia.mm Mounting Hole Size, Red LED Q16F58XXHR12E-3BU

Fuse - Maxi 32V Nylon/Vision 50A 1200 pc

- Designed specifically for automotive applications to SAE J1888
- Voltage rating of 32Vdc
- Maxifuse temp. range: -40°C → +125°C



Littelfuse

894-9584 50A Red Automotive Blade Fuse, 32V dc 0299050.ZXNV

USB 3.1 Type C Receptacle Mid-mount

- Capacitance : 100 pF
- Voltage : 200 V
- Package/Case : 0402
- Mounting Type : Surface Mount
- Dielectric : COG
- Tolerance : ±5%
- Dimensions : 1 × 0.5 × 0.5mm



835-3949 200 V ±5% COG Dielectric 0402 Max. Op. Temp. +125°C C0402C101J2GACAU0

Al Capacitor FK-S Series

Features :

- Suitable for high temperature lead free reflow soldering
- AEC-Q200 qualified
- Low ESR
- Advanced foil technology
- Standard parts can withstand shocks up to 10G while the vibration proof variant can withstand shocks up to 30G
- Environmentally friendly



Panasonic

106-2861 270µF 16 V dc 6.3mm SMT FKS EEEFKC271XSP Series Lifetime 2000h

LIN Serial Analyzer

- Interface Function : LIN Bus
- Kit Classification : Development Kit
- Kit Name : LIN Serial Analyzer



MICROCHIP

681-0960 Bus Development Kit, APGDT001 APGDT001



Motor Control Evaluation Shield Kit

CY8CKIT-037 Board Features

- 4 × IR2101 High Side/Low Side MOSFET gate drivers
- 8 × IRFU3607 power MOSFETs configured as 4 × Half-Bridges
- Phase current detecting and processing circuit



124-4182 BLY172S-24V-4000 CY8CKIT-037

ARISO Contactless Receiver

Features and Benefits:

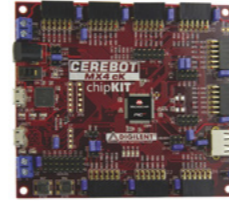
- Reverse polarity protection for power and data transmission
- Protection against over heating
- Will automatically switch off in the event of a metal foreign object between transmitter and receiver
- Interchangeable Dynamic Pairing between ARISO couplers



906-0922 4 Pole M12 Socket 2287598-2
871-1723 2.3 ,3.6 V 16-Pin Module MM7150I-AB1

Digilent Cerebot MX4cK Development Board

PIC32MX460F512L 32-bit MIPS-core microcontroller, 512KB Flash memory, 32KB SRAM
USB 2.0 compliant full-speed On-The-Go (OTG) controller with dedicated DMA channel



765-2844 MX4cK Development Board TDGL009

Profibus screw terminal subD connection

- Gender : Male
- Number of Contacts : 9
- Body Orientation : Right Angle
- Pitch : 2.77mm
- Contact Material : Copper Alloy



493-1964 2.77mm Pitch 9 Way Right Angle Male 2708232

2W R/A HVIL Connector

- Technology : Industrial Communications Capabilities of the Sitara AM335x ARM@ Cortex™-A8 Processors
- Device Core : ARM Cortex A8
- Processor Family Name : AM335x
- Processor Part Number : AM3359
- Processor Type : MPU



903-3002 AM3359 Ind Comms Engine I/F Eval Board TMDSICE3359

ON Semi, NCV7351D1ER2Gr

- Maximum Data Rate : 1Mbps
- Number of Transceivers : 1
- Standard Supported : ISO 11898-2
- Power Down Mode : Silent
- Maximum Supply Current : 75 mA, 72 mA



801-6772 CAN Transceiver 1Mbps 1-channel NCV7351D1ER2G ISO 11898-2, 8-Pin SOIC

AX5052 MCU/SoC Debug Adapter

- RJ45 connector for AXSEM debug link
- mini USB connector for PC link
- Red LED indicating the debug link is active, MCU in debug mode
- Green LED indicating MCU is running a program

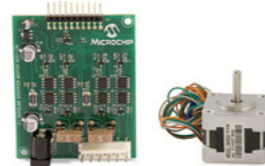


914-4291 Debug Adapter AXDBG-2-GEVK

PIC F1 Bipolar Motor Evaluation Add-On

Features :

- Direct connection to the F1 Low-Voltage Evaluation Platform
- 4 MOSFET half bridge circuits for bipolar stepper motor drive
- Pin connector interface for motor
- Motor current limiting adjustment



860-8756 Bipolar Motor Evaluation Add-On DM164130-7

F1 LV Eval Board Brush DC Motor Add-On

- Direct connection to F1 LV Evaluation Platform (DM164130-5)
- 2 × MOSFET half-bridge circuits for BDC motor drive
- Pin connector interface for motor
- Motor current limiting adjustment
- 12V plug with voltage regulation



765-2774 DC Motor Add-On DM164130-6

Harting Ha-VIS preLink RJ45 Connectors

Features and benefits :

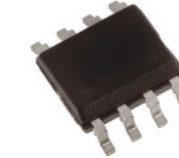
- Swappable mating profiles for versatile and sustainable ethernet cabling
- Ha-VIS preLink assembly tool ensures a reliable installation process in one movement
- Easy, quick installation in cramped spaces



875-5648 STP Ha-VIS preLink Series 144176

RS-485 Transceiver 20Mbps 5V SOIC8

- Number of Transmitters : 1
- Package Type : SOIC
- Mounting Type : Surface Mount
- Pin Count : 8
- Number of Receivers : 1



798-4968 Line Transceiver, 4.75 → 5.25 V, 8-Pin SOIC MAX3462ESA+

High Speed CAN Transceiver SOIC8c

- Maximum Data Rate : 1Mbps
- Number of Transceivers : 1
- Standard Supported : ISO 11898-2
- Maximum Supply Current : 65 mA
- Mounting Type : Surface Mount

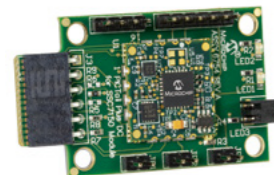


821-2995 CAN Transceiver 1Mbps 1-channel AMIS30660CANH6G ISO 11898-2, 8-Pin SOIC

MM7150 Motion Module Evaluation Board

Features :

- SSC7150 Motion Coprocessor with integrated Sensor Fusion algorithms
- 9-axis measurement via an on-board 3-axis Accelerometer, 3-axis Magnetometer and a 3-axis Gyroscope
- Ease of use; developing motion monitoring applications is streamlined



871-1727 PICtail/PICtail Plus Inertial Sensor Evaluation Board for MM7150 AC243007

ADAS Evaluation Kit R-Car H2

ADAS Starter Kit board :

- R-Car H2 ADAS SoC
- 2GB DDR3-1600 SDRAM
- 64MB QSPI NOR Flash memory (boot source)
- microSD-card slot
- HDMI connector



885-6016 Evaluation Kit R-Car H2 Y-R-CAR-ADAS-SKH2-BOARD

Intel RealSense R200 Development Kit

- Up to 3.5 m indoors, longer range outdoors 1; Depth/IR: up to 640 × 480 resolutions at 60 fps; RGB: 1080p at 30 fps; USB 3.0 port required

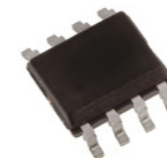


134-0406 R200 Development Kit 82634DSB2P
134-0405 SR300 Development Kit 82535IVCQSPLO4N

Digital Isolator CMOS 2-CH 25Mbps SOIC8N

Features :

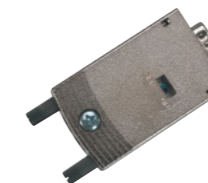
- Low propagation delay: 20 ns typical
- Low dynamic power consumption
- Bidirectional communication
- 3V to 5V level translation
- High common-mode transient immunity: >25kV/μs



820-8909 2-channel Digital Isolator, 3000 Vrms, ADUM1286BRZ 8-Pin SOIC

PROFIBUS IDC SWITCH REV. D-SUB

- Plug connector : D-sub, 9-pin
- Cable diameter : 4.5 mm → 8 mm
- Data transfer rate : 12 Mbit/s
- Screw connection for conductor cross section : max 1.5 mm²
- IDC version for conductor cross section : max 0.64 mm²



454-3264 Plug, Galvanized Zinc Aluminium, Thermoplastic Shell 144176

CAN Transceiver 1Mbps Shutdown 5V SOIC8

- Maximum Data Rate : 1Mbps
- Number of Transceivers : 1
- Power Down Mode : Standby
- Maximum Supply Current : 70 mA
- Mounting Type : Surface Mount



786-0981 CAN Transceiver 1Mbps 1-channel, MAX3059ASA+ 8-Pin SOIC



RS Pro 60w Solar Flexi Panel

- Self-healing top surface
- Completely waterproof
- Cells protected from hot spots
- Superior design: No square edges
- Easy fix



914-8451 60W Polycrystalline Flexible solar panel STPVF060RS

2W R/A HVIL Connector

- Open Circuit Voltage : 22V
- Battery Bank Capacity :10Ah
- Peak Power : 150W
- Type : Polycrystalline
- Dimensions : 1490 × 670 × 35mm
- Depth : 35mm
- Length : 1.49m



111-1042 PV Logic Polycrystalline solar panel STP150P

RS Pro 10w Flexi Solar Panel

- Power Rating : 10W
- Open Circuit Voltage : 21.6V
- Type : Polycrystalline
- Dimensions : 390 × 250 × 3mm
- Depth : 3mm
- Length : 390mm



914-8454 10W Polycrystalline Flexible solar panel STPVF010RS

600w Inverter

- Input Voltage : 10 → 15V
- Input Current : 0.5A
- Output Power : 600W
- Output Voltage : 220V
- Power Rating : 1200W
- Dimensions : 240 × 110 × 60mm



812-4508 Solar Technology INV600 10 → 15V Solar INV600 Inverter

Wall Mount Solar Inverter

- Input Voltage : 60 → 135 V ac, 120 → 270 V ac
- Input Current : 50 (Charge)A
- Output Voltage : 120 V ac, 230 V ac
- Efficiency : 80%
- Power Rating : 2.4 KVA, 1600 W



823-9029 OPTI SP2400-SW 120 → 270 V ac, 60 SP2400-SW → 135 V ac Solar Inverter

Inverter Steca Solarix PI 550

- True sine wave voltage
- Can be connected to the Steca Power Tarom with a Steca PAX4 parallel switch box
- Excellent overload capabilities
- Optimal battery protection
- Automatic load detection



866-0297 Steca Solarix PI 550W 12V dc PC Inverter Solarix PI 550

Solar Module Analyser

- Features and Benefits :
- Large LCD with backlight
 - I-V curve test for photovoltaic solar cell
 - Maximum solar power (Pmax) search by auto-scan (60 V, 6 A)
 - Auto scan, manual scan & single point I-V test



123-2205 ±1% Photovoltaic Cell Analyser, Rechargeable Li-Ion Battery 12A 60V dc PROVA 200A

Support Structure Mono Axial Two

- Aluminium solar module support structure (712mm) for 1 solar module
- Adjustable inclination 0-90°
- For a single solar module up to 150W



860-2893 Phaesun Aluminium Mono Axial Support Structure Solar Panel 390856

CAN Transceiver 1Mbps Shutdown 5V SOIC8

- 2× cable glands M20 (cable diameter: 5-12mm)
- UV-resistant
- Glueable
- Screwable



860-2900 Phaesun Roof Duct Water Tight Solar Panel 390810

Molex 2.5 mm Nano-Fit Wire to Board Crimp Receptacle Housings

Features and Benefits :

- Compact space saving size
- Full contact isolation
- Positive locking latches with anti-snap design for secure connection
- Audible indication on mating completion
- Polarization and keying for accurate alignment

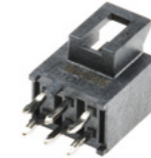


122-4842 6 Way 2 Row Female Straight Crimp Connector Housing 105308 105308-1206

Molex 2.5 mm Nano-Fit Wire to Board PCB Headers

Features and Benefits :

- Compact size and small footprint - 69% PCB space saving design
- Fully isolated contacts
- Scoop proof contacts
- Positive locking for secure connection
- Audible indication on mating completion
- Tactile feedback when mis-mating



122-4849 2.5mm Pitch 6 Way 2 Row Shrouded Vertical PCB Header, Through Hole 105310-1206

Molex 2.5 mm Nano-Fit Crimp Receptacle Terminals

Features and Benefits :

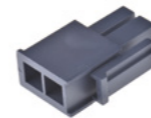
- Multiple points of contact for improved reliability
- Retention tangs and contact ribs for stable contact
- Ultra-low mating force reduces fatigue



122-5067 105300 Series Number Crimp Terminal, Female, Gold over Nickel Plating 105300-1200

Mega-Fit Receptacle Housing 2 way Glow

- Number of Contacts : 2
- Number of Rows : 2
- Pitch : 5.7mm
- Gender : Male
- Mounting Type : Cable Mount
- Series : Mega-Fit



797-5891 5.7mm Pitch 2 Way 2 Row Male Straight Crimp Connector Housing 170001 170001-0102

Mega-Fit Vertical and Right Angle Headers

- Series : Mega-Fit
- Series Number : 172064
- Pitch : 5.7mm
- Number of Contacts : 2
- Number of Rows : 2
- Body Orientation : Right Angle



797-5908 5.7mm Pitch 2 Way 2 Row Shrouded Right Angle PCB Header 172064-0002

Mega-Fit Terminal Contact

- Gender : Female
- For Use : With Mega-Fit Crimp Housing 170001, Mega-Fit Crimp Housing 171692
- Series : Mega-Fit
- Termination Method : Crimp
- Contact Plating : Gold, Nickel
- Minimum Wire Size AWG : 16AWG



808-4188 5.7mm Pitch 2 Way 2 Row Shrouded Right Angle PCB Header 172063-0311

Molex 3.00mm Micro-Fit 3.0 Wire to Wire Plug and Receptacle Crimp Housing

- Number of Contacts : 4
- Number of Rows : 2
- Pitch : 3mm
- Gender : Female
- Mounting Type : Cable Mount
- Series : Micro-Fit 3.0



233-2753 3mm Pitch 4 Way 2 Row Female Straight Crimp Connector Housing 43026 43026-0400

Molex Micro-Fit 3.0 3.0mm Dual Row PCB Headers with Snap in Plastic Peg PCB Lock

Features and Benefits :

- High current carrying capacity in a small footprint
- High temperature housings for IR reflow soldering
- Through hole versions SMT compatible



233-2955 Series Number 43045, 3mm Pitch 4 Way 2 Row Shrouded Right Angle PCB Header 43045-0400

Micro-Fit 3-0 Crimp Contacts

Features :

- Phosphor bronze contact material
- Available with tin or gold mating plating
- Tin plated terminal plating



670-1850 43030 Series Number Crimp Terminal, Female, 24AWG to 20AWG 43030-0007

Our Electronics components brands at a glance

Every technology — and who supplies them

INTERCONNECT	Audio & Video Connectors										Circular Connectors										Connector Tools & Accessories										General Purpose Rectangular Connectors										IC Sockets										Mains & IEC Connectors & Accessories										Network & Telecom Connectors										PCB Connectors										Power Connectors										RF & Coaxial Connectors										Terminal Blocks & DIN Rails										Terminals & Splices										Test Leads & Test Kits										Test & Measurement Connectors										USB, D-sub & Computing Connectors																																																																																																																																																																																																																																																								
	3M										ABB										Amphenol										Amphenol FCI										Binder										Bulgin										Delphi										Deutsch (TE Connectivity)										FCT - A Molex Company										Glenair										HARTING										Hirose										Hirschmann										Hirschmann Test & Measurement										Huber & Suhner										ITT Cannon										JAE										JST										Legrand										LEMO										Lumberg										Mennekes										Molex										Stäubli Electrical Connectors										Neutrik										Phoenix Contact										Pressmaster										Radiall										Rosenberger										RS Pro										Samtec										Schurter										Souriau										TE Connectivity										Telegartner										Wago										Weidmüller										Wieland										Würth Elektronik								
ELECTROMECHANICAL & POWER MANAGEMENT	Fuses, Sockets & Circuit Breakers										Switches										Relays										Power Supplies										Thermal Management										Indicators																																																																																																																																																																																																																																																																																																																																																		
	Arcol										AVX										Block										Bourns										DEHN										EPCOS										Furze										Kemet Electronics										KOA										MTL Surge Technologies										Murata Power Solutions										Nichicon										Nippon Chemi-Con										Panasonic										RS Pro										Rubycon										Schaffner										Schurter										TDK										TE Connectivity										Vishay										VPG (Vishay Foil Resistors)										Würth Elektronik										Yageo																																																																																																																																																														
SEMICONDUCTORS	Amplifiers & Comparators										Timing & Frequency Control Circuits										Crystal, Oscillators & Resonators										Data Converters										Discrete Semiconductors										Display Drivers & Controllers										Interface ICs										Memory ICs										Power Management										Processors & Microcontrollers										Programmable Logic (FPGA)										RF & Microwave Circuits										Semiconductor Development Kits										Sensors & Sensor Interface										Single Board Computers										Standard Logic										Video Processing										Wireless Modules																																																																																																																																																																																																																										
	Altera										Analog Devices										Arduino										Broadcom										Cypress Semiconductor										DiodesZetex										EXAR										FTDI Chip/Bridgetek										Fuji Electric										Genuino										Honeywell										Infineon										Intel										Intersil										IXYS										Linear Technology										Maxim										Microchip										MikroElektronika										NXP Semiconductors										ON Semiconductor										Panasonic										Raspberry Pi										Renesas Electronics										RF Solutions										ROHM										Semikron										Sensirion										Silicon Labs										STMicroelectronics										Taiwan Semiconductor										Texas Instruments										Toshiba										Vishay										Xilinx																																																
DISPLAYS & OPTOELECTRONICS	Displays & Industrial Monitors										Fibre Optic Components										IR Emitters & Receivers										Laser Modules & Components										LED Indicators & Accessories										LED Lighting System Components										LEDs & LED Accessories										Optocouplers & Photodetectors										UV LEDs																																																																																																																																																																																																																																																																																																																				
	4D Systems										Analog Devices										BIVAR										Broadcom										Centronic										Cree										Dialight										Displaytech										EldoLED										Global Laser										Honeywell										JKL Components										Kingbright										LEDEngin										LG Innotek										LiteOn										Lumileds										Mentor										Nichia										ON Semiconductor										Optek										Osi										Osram Lighting										OSRAM Opto Semiconductors										Panasonic										PowerLED										Renesas Electronics										ROHM										RS Pro										Samsung										Seoul Semiconductor										Toshiba										TSLC										Vishay										Würth Elektronik																																																

We bring you the newest technologies and latest innovations from.
...the world's foremost electronic component manufacturers

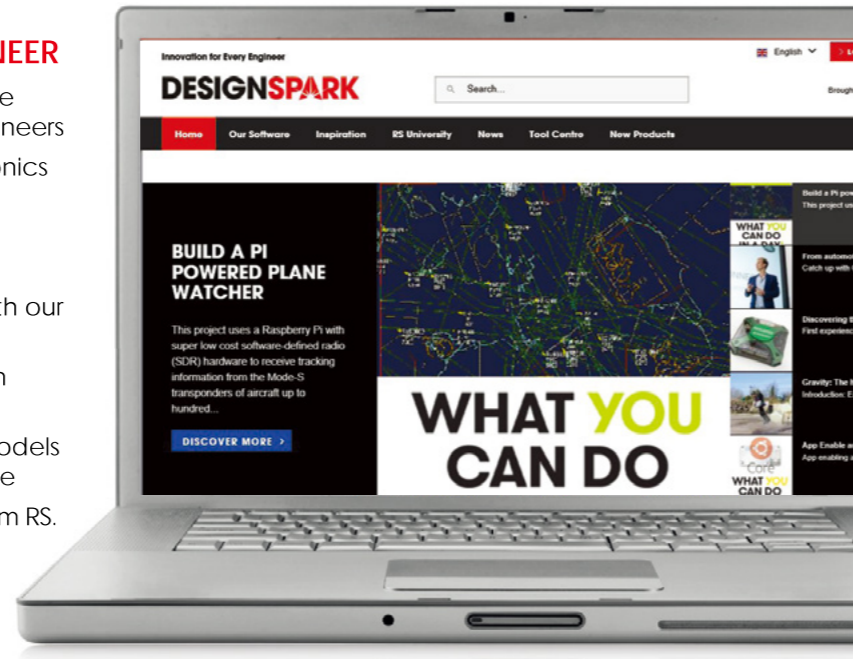
Find what you need at: hken.rs-online.com/electronics



DESIGNSPARK

PROVIDING INNOVATION FOR EVERY ENGINEER

- **DesignSpark:** Find out about the hottest products, share project ideas or simply request support from other engineers
- **DesignSpark PCB:** The world's most accessible electronics schematic and layout software
- **DesignSpark Mechanical:** Giving every engineer the power to quickly and easily design in 3D
- **DesignSpark Electrical:** Save time and avoid errors with our free electrical CAD solution
- **Toolbox App:** The ultimate engineering app for design calculations and electronics reference
- **3D CAD Models:** Access thousands of free 3D CAD models to build into your designs, directly within the RS website
- **PCB Part Library:** The unique and universal PCB Library from RS.
- **Obsolescence Manager:** Protectively manage component lifecycle and find replacements for parts approaching obsolescence.



RS COMPONENTS:

DELIVERING THE THINGS THAT MATTER MOST TO YOU

-  Get all your parts from a one-stop supplier with 500,000 products in stock globally.
-  Be certain with genuine parts from 2,500 trusted global brands.
-  Find what you need quickly via our website and technical support.
-  Order parts in industry standard production-ready packaging.

From prototyping to production, RS is on hand to deliver the latest innovations to help shape your ideas and turn your projects into next generation design reality.

hken.rs-online.com/electronics



RS ELECTRONICS LINECARD

When you're designing for the future, only the best brands will do.
hken.rs-online.com/electronics

