



## DCS-4633EV

# Vigilance 3-Megapixel Vandal-Proof Outdoor Dome Camera

### Features

#### Exceptional Video Quality

- 3-megapixel progressive CMOS sensor
- HD resolution of 2048 x 1536
- Wide Dynamic Range image enhancement
- H.265, H.264, and MJPEG codec support for streaming and recording
- Motion detection
- Privacy mask

#### Outdoor Placement

- Built-in IR LED illuminator with a 20-metre range for use in dark areas
- Range of mounting options for flexible placement
- Rugged IP66 weatherproof housing
- IK10 vandal-proof housing protects the camera from intruders

#### Network

- 10/100 Fast Ethernet port
- Power over Ethernet (PoE) ensures easy and flexible integration into your network

The D-Link DCS-4633EV Vigilance 3-Megapixel Vandal-Proof Outdoor Dome Camera is a high-definition professional surveillance solution suitable for small, medium, and large enterprises. The camera uses a high-sensitivity 3-megapixel progressive scan CMOS sensor with onboard WDR image enhancement to deliver truly superior quality video in all conditions. The all-in-one rugged design makes this camera extremely reliable and ideal for deployment in surveillance applications without the need for additional accessories.

### High-Quality Streaming & Recording

To maximise bandwidth efficiency and improve image quality, the DCS-4633EV provides real-time video compression using the H.265/H.264/ MJPEG codecs and supports three separate profiles for simultaneous video streaming and recording. Support for the latest H.265 High Efficiency Video Coding standard maximises network bandwidth for enhanced quality. Video resolutions of up to 2048 x 1536 provide clear details, and noise reduction and support for simultaneous video streams improve quality in case forensic work is required for evidence. Additional support for motion detection, event management features and ePTZ allow for implementation in a wide variety of surveillance applications such as monitoring public areas to detect incidents and to coordinate responses, enforcing access control to restricted areas, deterring criminal activity, or monitoring inventory.

### Versatile Monitoring in All Environments

The DCS-4633EV features WDR image enhancement to deliver improved image quality in conditions with uneven or difficult lighting, so you can identify subjects that are backlit or in brightly-lit areas. In low-light situations, the IR-cut filter automatically slides out of the way to use all available light. The DCS-4633EV also has built-in IR LED illuminators with a 20-metre range, allowing the camera to keep watch even in complete darkness. IP66 certification ensures the camera is completely protected from dust and water in any environment and IK10 certified vandal-proof housing makes sure it keeps recording even when intruders attempt to sabotage the camera.

# Vigilance 3-Megapixel Vandal-Proof Outdoor Dome Camera

## Robust Management Software

The DCS-4633EV Vigilance 3-Megapixel Vandal-Proof Outdoor Dome Camera includes D-ViewCam, a complete surveillance software package that enables you to view, manage, and record from up to 32 cameras on a single computer in a central location. Recordings and e-mail alerts can be triggered by motion detection or by digital input devices. This feature automatically keeps a record of any unusual activity and notifies administrators when no one is around to monitor on-site.

## Flexible Connectivity

The DCS-4633EV has a built-in 802.3af-compliant PoE module that simplifies installation by providing power and networking connectivity with a single cable. This feature can speed along installation by reducing the need to lay extra electrical wiring and install outlets in the location since a power supply is not required.



### 3-Megapixel Outdoor PoE Vandal-Proof Dome Camera

DCS-4633EV

#### Improved Video Performance

- Support for the latest H.265 High Efficiency Video Coding standard maximises network bandwidth for enhanced quality

#### HD Image Quality and Detail

- High-resolution 3-megapixel sensor provides a high-resolution image (up to 2048 x 1536) to monitor a large area with excellent detail

#### Weather and Vandal proof

- Toughened metal, industry-certified IK-10 (vandal-proof) and IP-66 (weather-proof) housing designed for use in harsh environments. Specifically built to withstand sudden high impact and adverse weather conditions.

## Free D-ViewCam™ Video Management Software DCS-100

Bundled free with D-Link network cameras D-ViewCam enables users to centrally manage multiple cameras for home or businesses.

Supporting up to 32 network cameras and up to 64 users, D-ViewCam is compatible with all current D-Link network cameras and video servers, offers digital monitoring and recording with a wide array of features including simultaneous video recording, playback and live view.

D-ViewCam offers scheduled, motion and manual recording. Recorded files can be searched by video type and selected files can be played, edited and converted into AVI or ASF files. The e-map mode in the application allows users to arrange a map with camera locations and orientation, while additional features such as auto-patrol, rotate, zoom, and focus provide optimal control over video surveillance.



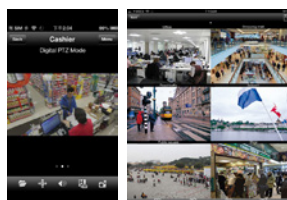
Playback view



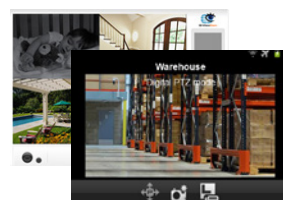
Live view

## D-ViewCam Mobile

Keep an eye on your surveillance cameras anytime, anywhere with D-Link's D-ViewCam Mobile app. The D-ViewCam Mobile app makes it easy to check on your business no matter where you are, no matter what time of day it is.



For iPhones/iPads



For Android devices



D-ViewCam



# Vigilance 3-Megapixel Vandal-Proof Outdoor Dome Camera

## Technical Specifications

### Camera

|                            |   |  |
|----------------------------|---|--|
| Camera Hardware Profile    | <ul style="list-style-type: none"> <li>• 1/3" 3 Megapixel progressive scan CMOS sensor</li> <li>• 20 metre IR illumination distance</li> <li>• Minimum illumination: <ul style="list-style-type: none"> <li>• 0.01 lux / F1.85 (colour)</li> <li>• 0.008 lux / F1.85 (B/W)</li> <li>• 0 lux / F1.85 (IR-LED on)</li> </ul> </li> <li>• Built-in Infrared-Cut Removable (ICR) Filter module</li> <li>• 10x digital zoom</li> <li>• Minimum object distance 0.5M</li> </ul> | <ul style="list-style-type: none"> <li>• Focal length: 2.8 mm</li> <li>• Aperture: F1.85</li> <li>• Angle of view: <ul style="list-style-type: none"> <li>• (H) 105°</li> <li>• (V) 80°</li> <li>• (D) 137°</li> </ul> </li> <li>• Adjustment angle (non-motorized): <ul style="list-style-type: none"> <li>• Vertical: 60°</li> <li>• Horizontal: 350°</li> </ul> </li> </ul> |
| Camera Housing             | <ul style="list-style-type: none"> <li>• IP66 compliant weatherproof housing</li> </ul>   | <ul style="list-style-type: none"> <li>• IK10 vandal-proof housing</li> </ul>  |
| Image Features             | <ul style="list-style-type: none"> <li>• Configurable image size, quality, frame rate, and bit rate</li> <li>• Time stamp and text overlays</li> <li>• Configurable motion detection windows</li> <li>• Wide Dynamic Range (WDR)</li> <li>• Auto White Balance (AWB)</li> </ul>   | <ul style="list-style-type: none"> <li>• Auto Gain Control (AGC)</li> <li>• Configurable privacy mask zones</li> <li>• Configurable shutter speed, brightness, saturation, contrast, sharpness, and 3D filter.</li> </ul>  |
| Video Compression          | <ul style="list-style-type: none"> <li>• Simultaneous H.265/H.264/MJPEG format compression</li> <li>• H.265/H.264/MJPEG multicast streaming</li> </ul>  | <ul style="list-style-type: none"> <li>• JPEG for still images</li> </ul>  |
| Video Resolution           | <ul style="list-style-type: none"> <li>• 16:9 - 1920 x 1080, 1280 x 720, 640 x 360 up to 30 fps<sup>1</sup></li> </ul>  | <ul style="list-style-type: none"> <li>• 4:3 - 2048 x 1536, 1440 x 1080, 1280 x 960, 800 x 600, 640 x 480 up to 30 fps<sup>1</sup></li> </ul>  |
| External Device Interfaces | <ul style="list-style-type: none"> <li>• 10/100 BASE-TX Fast Ethernet port</li> <li>• Supports 802.3af PoE</li> </ul>   | <ul style="list-style-type: none"> <li>• microSD/SDHC/SDXC card slot, accepts cards up to 128 GB<sup>2</sup></li> </ul>  |




### Network

|                   |   |   |
|-------------------|---|---|
| Network Protocols | <ul style="list-style-type: none"> <li>• IPv6</li> <li>• IPv4</li> <li>• ARP</li> <li>• TCP/IP</li> <li>• UDP</li> <li>• ICMP</li> <li>• DHCP client</li> <li>• NTP client (D-Link)</li> <li>• DNS client</li> <li>• DDNS client (D-Link)</li> <li>• SMTP client</li> <li>• FTP client</li> </ul> | <ul style="list-style-type: none"> <li>• HTTP/HTTPS</li> <li>• Samba client</li> <li>• PPPoE</li> <li>• UPnP port forwarding</li> <li>• RTP/RTSP/RTCP</li> <li>• IP filtering</li> <li>• Multicast</li> <li>• CoS</li> <li>• QoS/DSCP</li> <li>• SNMP</li> <li>• ONVIF compliant</li> </ul> |
| Security          | <ul style="list-style-type: none"> <li>• Administrator and user group protection</li> <li>• Password authentication</li> </ul>  | <ul style="list-style-type: none"> <li>• HTTP and RTSP authentication</li> </ul>  |

### System Management

|                                       |   |   |
|---------------------------------------|---|---|
| Event Management                      | <ul style="list-style-type: none"> <li>• Motion detection</li> <li>• Tamper detection</li> <li>• Event notification and uploading of snapshots/video clips via e-mail or FTP</li> </ul>   | <ul style="list-style-type: none"> <li>• Supports multiple SMTP and FTP servers</li> <li>• Multiple event notifications</li> <li>• Multiple recording methods for easy backups</li> </ul> |
| Remote Management                     | <ul style="list-style-type: none"> <li>• Take snapshots/video clips and save to local hard drive</li> </ul>   | <ul style="list-style-type: none"> <li>• Configuration interface accessible via web browser</li> </ul>  |
| System Requirements for Web Interface | <ul style="list-style-type: none"> <li>• Operating System: Microsoft Windows 10 / 8 / 7</li> </ul>  | <ul style="list-style-type: none"> <li>• Browser: Internet Explorer, Firefox, or Chrome</li> </ul>  |
| D-ViewCam™ System Requirements        | <ul style="list-style-type: none"> <li>• Operating System: <ul style="list-style-type: none"> <li>• 32-bit: Windows 8 / 7 (SP1)</li> <li>• 64-bit: Windows 10 / 8 / 7 (SP1) / Server 2012 / Server 2008 R2</li> </ul> </li> </ul> | <ul style="list-style-type: none"> <li>• Web Browser: Internet Explorer 7 or higher</li> <li>• Protocol: Standard TCP/IP</li> </ul>   |
| D-ViewCam™ Software Functions         | <ul style="list-style-type: none"> <li>• Remote management/control of up to 32 cameras</li> <li>• Supports all management functions provided in web interface</li> </ul>  | <ul style="list-style-type: none"> <li>• Viewing of up to 32 cameras on one screen</li> <li>• Scheduled motion triggered, or manual recording options</li> </ul>                          |

## Vigilance 3-Megapixel Vandal-Proof Outdoor Dome Camera

| General                |  |  |  |
|------------------------|--|--|--|
| Weight                 | • 365 g ± 5%   |  |  |
| Dimensions             | • Ø 99 x 64.7 mm   |  |  |
| Power                  | • Input: 100 to 240 V AC, 50/60 Hz   | • Output: 12 V DC 1.5 A  |  |
| Power Consumption      | • 6 watts ± 5% (PoE)   |  |  |
| Temperature            | • Operating: -30 to 50 °C (-22 to 124 °F)  | • Storage: -20 to 70 °C (-4 to 158 °F)   |  |
| Humidity               | • Operating: 20% to 80% non-condensing   | • Storage: 5% to 95% non-condensing  |  |
| Certifications         | • CE<br>• CE LVD   | • FCC<br>• C-Tick  |  |
| Optional Accessories   |  |  |  |
| Model Name             | • Wall-Mount Bracket   | • Ceiling-Mount Bracket  | • Angled Ceiling-Mount Bracket   |
| Model Number           | • DCS-37-1   | • DCS-37-2   | • DCS-37-3   |
| Product Image          |  |  |  |
| Dimensions (L x W x H) | • 183 x 120 x 90 mm  | • Ø 117 x 40 mm  | • Ø 129 x 72.1 mm  |

<sup>1</sup> Frame rates when streaming video may vary depending on network conditions and method used.

<sup>2</sup> microSD card not included. microSD/SDHC/SDXC v3.1 compatible.



If the worst should happen to your network you need the very best support and fast. Downtime costs your business money. D-Link Assist maximises your uptime by solving technical problems quickly and effectively. With a choice of three affordable service offerings covering all D-Link business products, you can select the package that suits you best:

- [D-Link Assist Gold - for comprehensive 24-hour support](#)
- [D-Link Assist Silver - for prompt same-day assistance](#)
- [D-Link Assist Bronze - for guaranteed response on the next business day](#)

D-Link Assist can be purchased together with any D-Link business product. So whether you're buying switching, wireless, storage, security or IP Surveillance equipment from D-Link, your peace of mind is guaranteed.



For more information: [www.dlink.com](http://www.dlink.com)

**D-Link European Headquarters.** D-Link (Europe) Ltd., First Floor, Artemis Building, Odyssey Business Park, West End Road, South Ruislip HA4 6QE, United Kingdom. Specifications are subject to change without notice. D-Link is a registered trademark of D-Link Corporation and its overseas subsidiaries. All other trademarks belong to their respective owners. ©2018 D-Link Corporation. All rights reserved. E&OE.

Updated January 2018

**D-Link**<sup>®</sup>  
Building Networks for People