

# PRECONFIGURED HYDRAULIC CIRCUITS

**ORDER TODAY. SHIPS TODAY.**

## Product Reference Guide

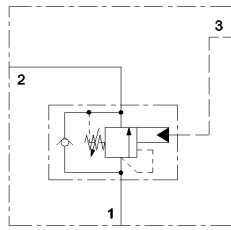
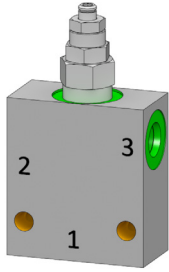


The new FastLine program from JEM Technical features preconfigured hydraulic circuits with same day shipping availability. FastLine allows for same day shipping on dozens of preconfigured cartridge valve manifold assemblies for common hydraulic applications and functions. Our offering consists of an array of circuit configurations in compact manifolds using proven cartridge valves from industry leading manufacturers.

 **FASTLINE**  
EXPRESS VALVE SOLUTIONS

888.256.8266 | [www.fastline-valves.com](http://www.fastline-valves.com)

# Holding Valves

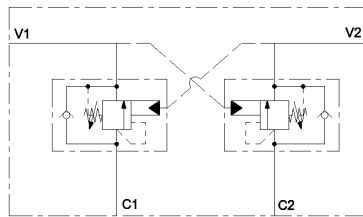
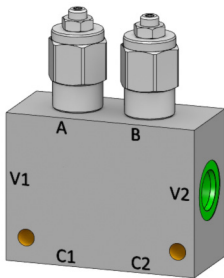


## Description:

Single motion control valve

Model Code  
CBV061 - 304T  
CBV20M - 308T

Specifications  
3 GPM 3000 PSI  
15 GPM 3000 PSI

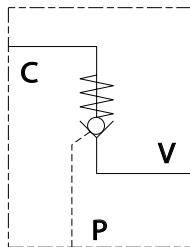
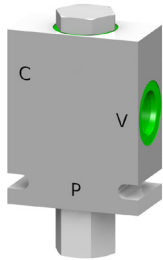


## Description:

Dual motion control valve

Model Code  
DCBV061 - 304T  
DCBV20M - 308T

Specifications  
3 GPM 3000 PSI  
15 GPM 3000 PSI

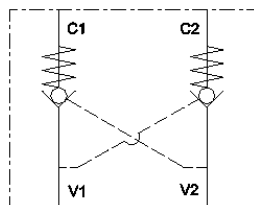
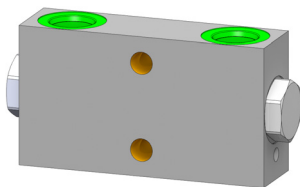


## Description:

Single pilot check valve

Model Code  
PCV100 - 408T

Specifications  
15 GPM 3000 PSI

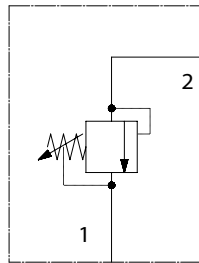
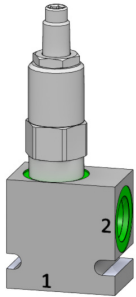


## Description:

Dual pilot check valve

Model Code  
DCV080 - 406T  
DCV100 - 408T

Specifications  
8 GPM 3000 PSI  
20 GPM 3000 PSI



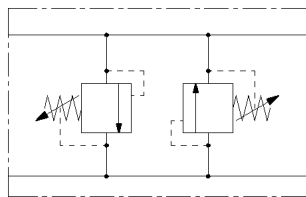
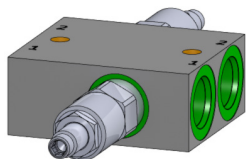
## Description:

Direct acting relief valve

Model Code  
RV080 - 208T

RV102 - 208T

Specifications  
10 GPM 3000 PSI  
note: flow from 1-2  
25 GPM 3000 PSI  
note: flow from 2-1

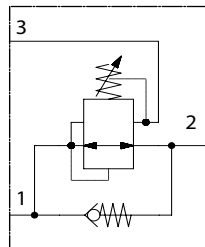
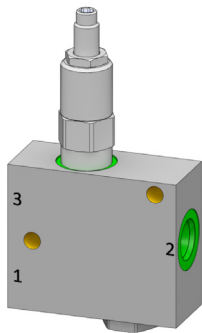


## Description:

Cross-port relief valve

Model Code  
CRV082 - 406T  
CRV102 - 410T

Specifications  
10 GPM 3000 PSI  
25 GPM 3000 PSI

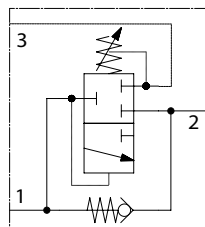
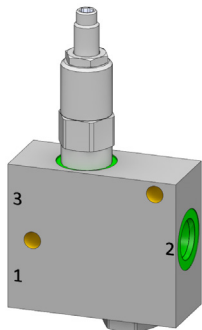


## Description:

Pressure reducing valve with check valve

Model Code  
PRCV106 - 308T

Specifications  
15 GPM 3000 PSI



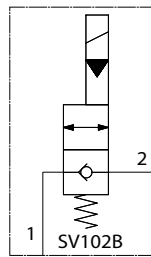
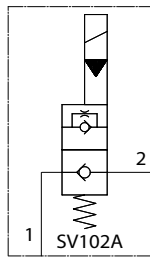
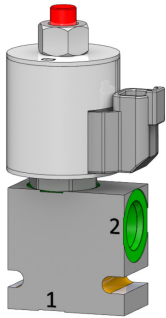
## Description:

Sequence valve with check valve

Model Code  
PSCV106 - 308T

Specifications  
15 GPM 3000 PSI

# Solenoid Valves

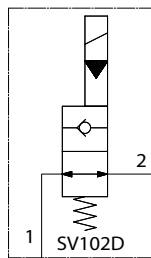
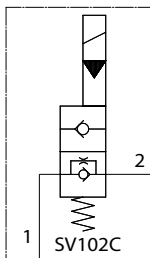
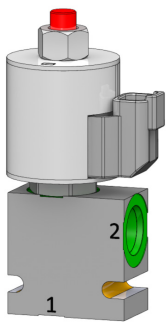


## Description:

Solenoid valve, normally closed 2-way

Model Code  
SV102A - 208T  
SV102B - 208T

Specifications  
15 GPM 3000 PSI  
15 GPM 3000 PSI  
Reverse flow when shifted

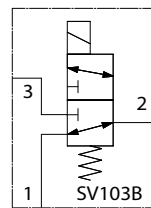
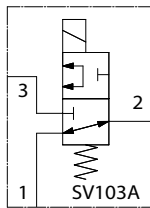
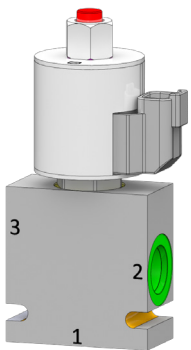


## Description:

Solenoid valve, normally open 2-way

Model Code  
SV102C - 208T  
SV102D - 208T

Specifications  
15 GPM 3000 PSI  
15 GPM 3000 PSI  
Reverse flow when shifted

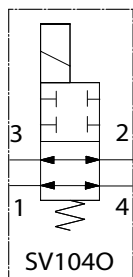
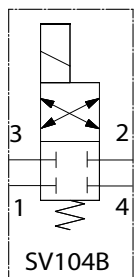
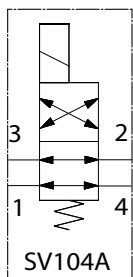
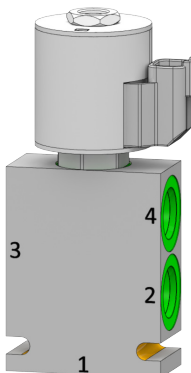


## Description:

Solenoid valve, 3 way

Model Code  
SV103A - 208T  
SV103B - 208T

Specifications  
6 GPM 3000 PSI  
6 GPM 3000 PSI  
Selector

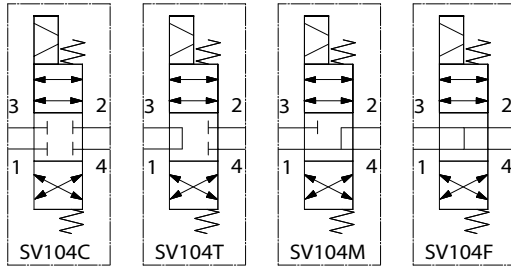
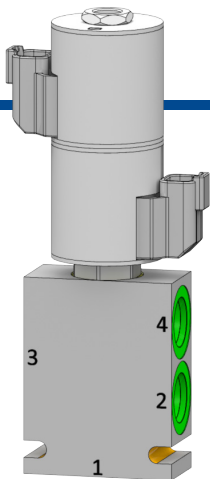


## Description:

Solenoid valve 4-way 2 position

Model Code  
SV104A - 208T  
SV104B - 208T  
SV104O - 208T

Specifications  
6 GPM 3000 PSI  
Cross-over  
6 GPM 3000 PSI  
Closed  
6 GPM 3000 PSI  
Open



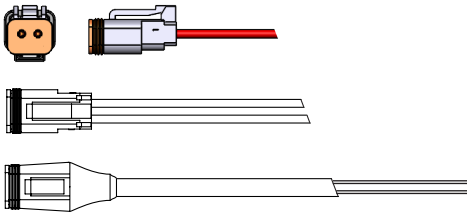
## Description:

Solenoid valve 4-way 3 position

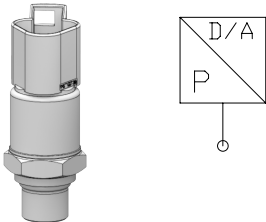
| Model Code    | Specifications |
|---------------|----------------|
| SV104C - 208T | 6 GPM 3000 PSI |
| SV104T - 208T | 6 GPM 3000 PSI |
| SV104M - 208T | 6 GPM 3000 PSI |
| SV104F - 208T | 6 GPM 3000 PSI |

## Description:

Wire leads with Deutsch connectors



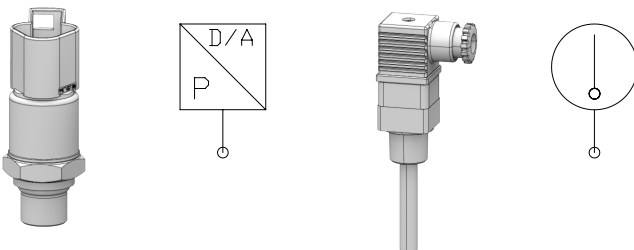
| Model Code | Specifications                            |
|------------|---|
| 1000288    | 18" 18 awg leads with DT06-2S connector   |
| 1000373    | 118" 18 awg overmolded, DT06-2S connector |
| 1000374    | 118" 18 awg overmolded, DT06-3S connector |



## Description:

Transducer, (0.5V - 4.5V) DT04-3P Connector

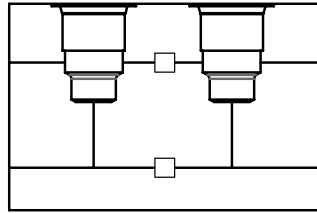
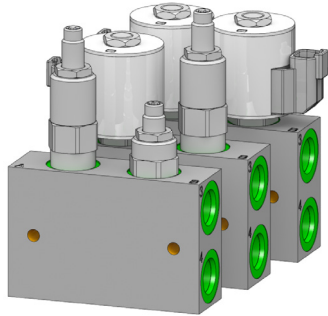
| Model Code | Specifications        |
|------------|-----------------------|
| 69409      | 0-1000 PSI (0-70bar)  |
| 69414      | 0-3600 PSI (0-250bar) |
| 69416      | 0-8000 PSI (0-550bar) |



## Description:

Transducer, (4-20ma) DT04-3P Connector

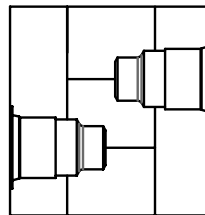
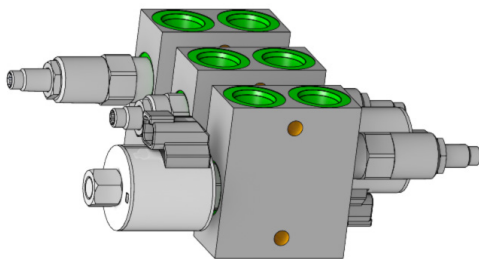
| Model Code        | Specifications  |
|-------------------|---|
| 6941              | 0-1000 PSI (0-70bar)                                    |
| 56972             | 0-3600 PSI (0-250bar)                                   |
| 69417             | 0-8000 PSI (0-550bar)                                   |
| TTSN25/100C-28M32 | Temp. sensor, (100C°)<br>note: use DIN 43650A connector |



## Description:

Dual cartridge assemblies, parallel cavities

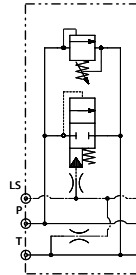
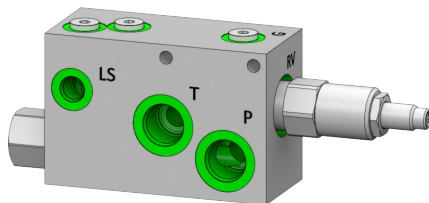
| Model Code    | Specification |
|---------------|---------------|
| DCBP080 - 06T | VC08 Cavity   |
| DCBP100 - 08T | VC10 Cavity   |
| DCBP120 - 12T | VC12 Cavity   |
| DCBP160 - 16T | VC16 Cavity   |



## Description:

Dual cartridge assemblies, cross-over cavities

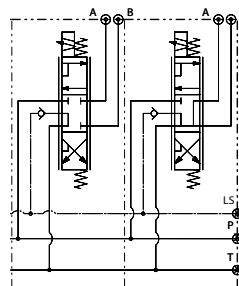
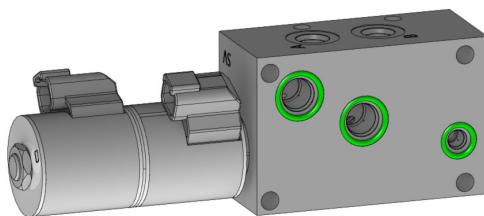
| Model Code    | Specifications  |
|---------------|-----------------|
| DCBX080 - 08T | 3 GPM 3000 PSI  |
| DCBC100 - 08T | 15 GPM 3000 PSI |



## Description:

Inlet section for DC105 assembly

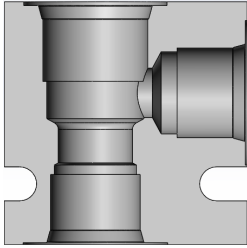
| Model Code | Specifications               |
|------------|------------------------------|
| DC1051 - I | 14GPM inlet, bypass comp.    |
| DC1052 - I | 12 GPM inlet, priority comp. |
| DC1053 - I | 40 GPM inlet, priority comp. |



## Description:

Section for DC105 assembly

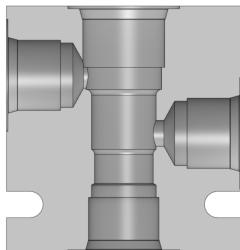
| Model Code  | Specifications |
|-------------|----------------|
| DC1051-P58C | 6 GPM Cylinder |
| DC1051-P58D | 6 GPM Motor    |



## Description:

2 Way body:

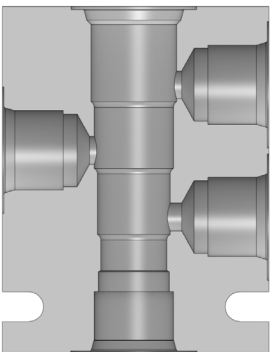
| Model Code      | Specification   |
|-----------------|-----------------|
| SCB06 - 2 - 04T | FC06 - 2 cavity |
| SCB08 - 2 - 06T | VC08 - 2 cavity |
| SCB10 - 2 - 08T | VC10 - 2 cavity |
| SCB12 - 2 - 12T | VC12 - 2 cavity |
| SCB16 - 2 - 16T | VC16 - 2 cavity |



## Description:

3 Way body:

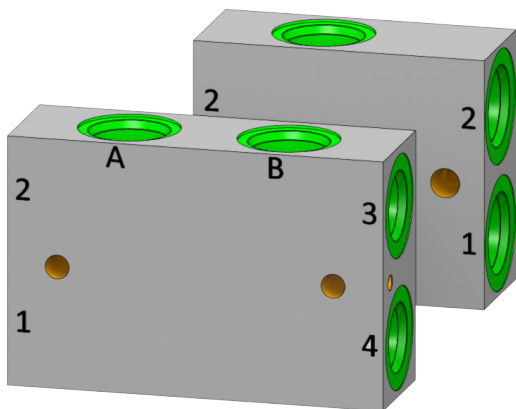
| Model Code      | Specification   |
|-----------------|-----------------|
| SCB06 - 3 - 04T | FC06 - 3 cavity |
| SCB08 - 3 - 06T | VC08 - 3 cavity |
| SCB10 - 3 - 08T | VC10 - 3 cavity |
| SCB12 - 3 - 12T | VC12 - 3 cavity |



## Description:

4 Way body:

| Model Code      | Specification   |
|-----------------|-----------------|
| SCB08 - 4 - 06T | VC08 - 4 cavity |
| SCB10 - 4 - 08T | VC10 - 4 cavity |



## Description:

2 Way dual cavity body:

| Model Code | Specification                |
|------------|------------------------------|
| DCBP080    | VC08 - 2 parallel cavities   |
| DCBP100    | VC10 - 2 parallel cavities   |
| DCBP120    | VC12 - 2 parallel cavities   |
| DCBP160    | VC16 - 2 parallel cavities   |
| DCBX080    | VC08 - 2 cross-over cavities |
| DCBX100    | VC10 - 2 cross-over cavities |

JEM Technical, family owned and operated since 1984, is a recognized leader in the creation of custom manifold and electronic solutions for your motion control systems. With headquarters near Minneapolis, Minnesota, and an additional sales and warehousing operation in Winnipeg, Canada, JEM Technical provides complimentary custom hydraulic manifolds and electronic control solutions for mobile and industrial machinery OEM's.

Our reputation is based on our commitment to innovative systems designs, company-wide quality control and exceptional customer service. We welcome you to come visit our facilities to see firsthand the JEM Technical difference and to meet our dedicated team of employees.

## AFFILIATIONS



550 North Old Crystal Bay Road • Orono, MN 55356

**Phone** 952.473.5012  
**Fax** 952.473.6930  
**Email** info@jemtechnical.com

 [jemtechnical.com](http://jemtechnical.com)

60 De Baets St • Winnipeg, MB R2J 3S9

**Phone** 204.654.1743  
**Fax** 204.654.1791  
**Email** info.ca@jemtechnical.com

 [jemtechnical.ca](http://jemtechnical.ca)