

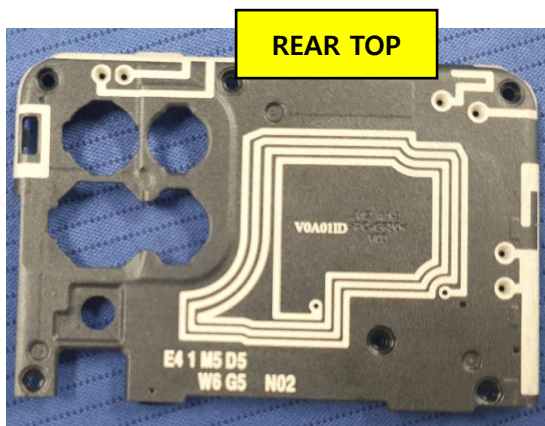
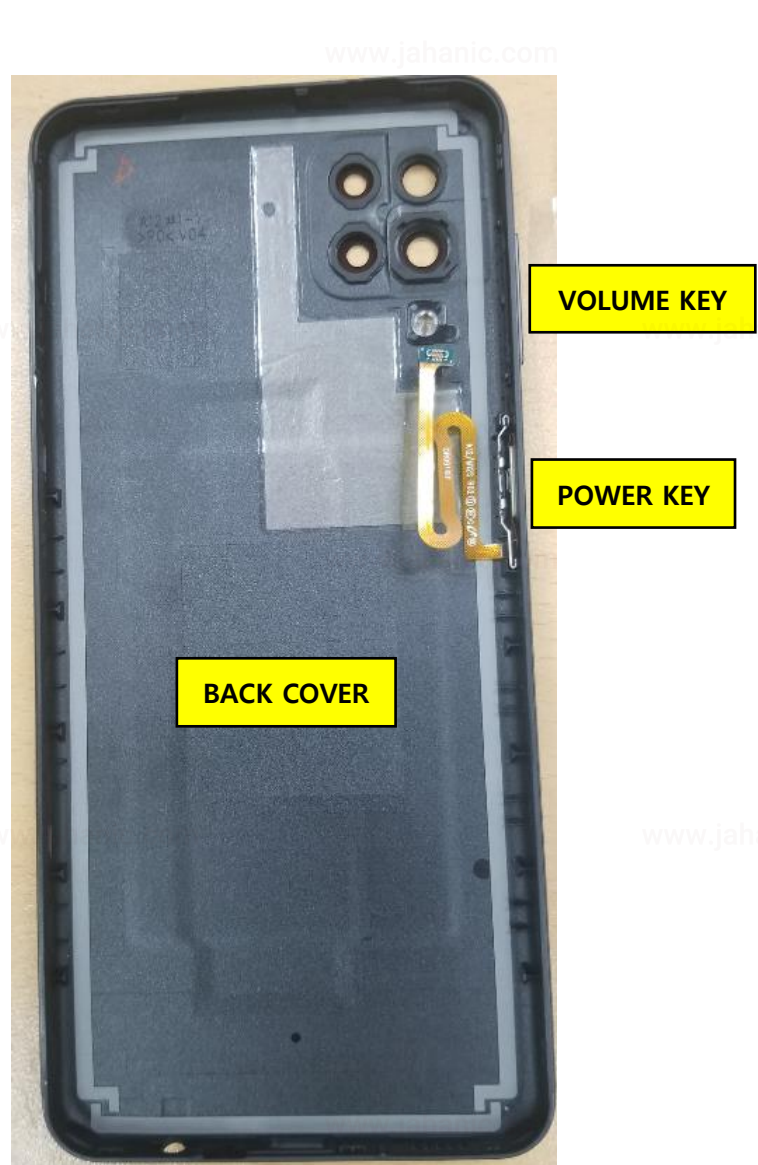
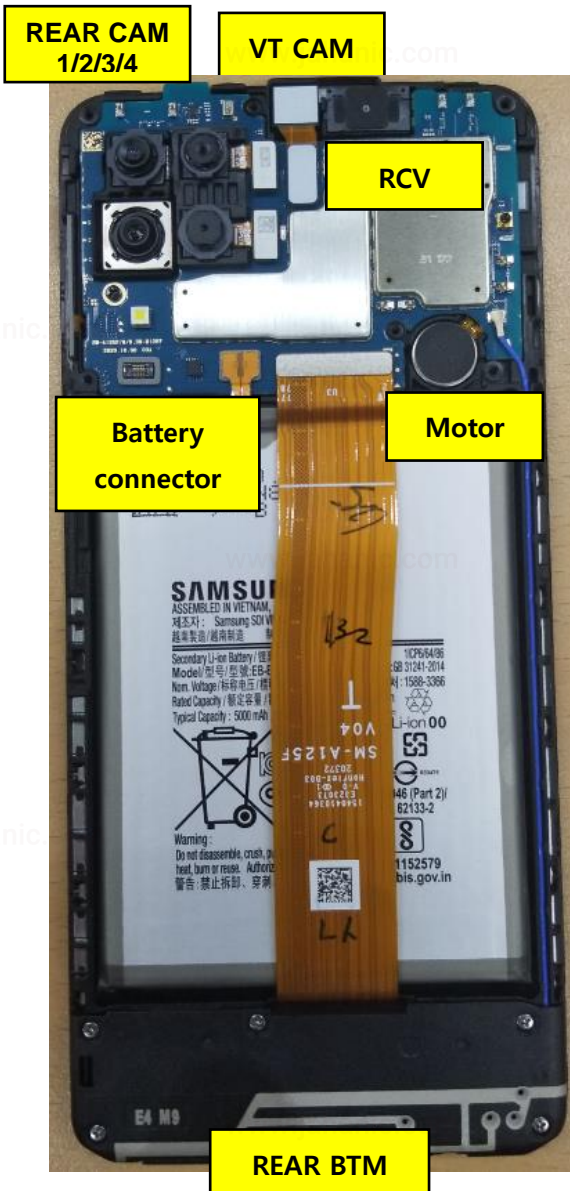
سرویس منوآل، کالبد شکافی و فول شماتیک

SAMSUNG A12

www.jahanic.com

7. Level 2 Repair

7-1. Components on the Rear Case



7. Level 2 Repair

7-2. Pre-requisite

	
Tweezers / Disass'y Stick / Screw Driver	Anti-static Gloves
	
Anti-static Mat	Hot Plate
	
A OCTA Disassembly Holder	OCTA Disassembly Upper
	
Ethyl Alcohol	Cotton Swab

7. Level 2 Repair

7-3. Disassembly

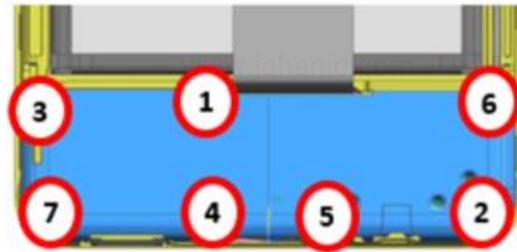
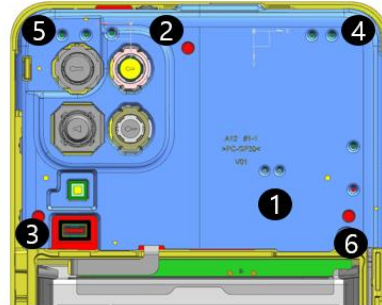
1

- 1) Remove SIM Tray on side.
- 2) Disassemble Rear Cover.
- 3) Disassemble Power key connector.



2

Remove screws 13ea.



※ Caution

Be care of scratch.

※ Caution

Be care of scratch.

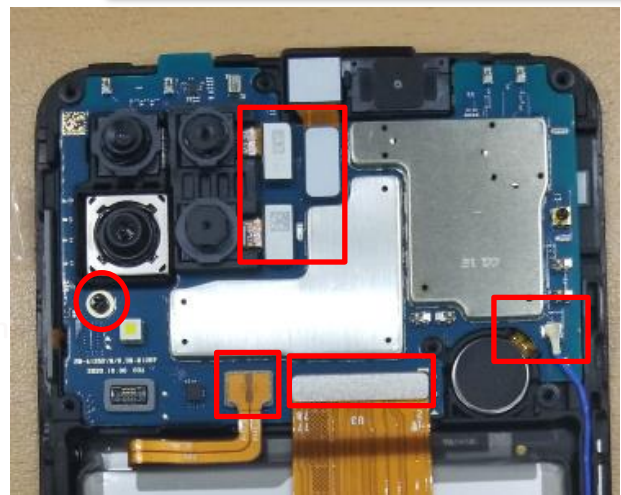
3

- 1) Disassemble Rear_TOP_ANT.
- 2) Disassemble Rear_BTM_ANT.



4

- 1) Remove PBA screws 1 points.
- 2) Disassemble LCD Connector.
- 3) Disassemble Camera Connector(3ea).
- 4) Disassemble Battery Connector.
- 5) Disassemble coaxial cable.



※ Caution

Be care of Rear damage.

※ Caution

- 1) Be care of scratch.
- 2) Be care of Rear and connector damage.
- 3) Be careful not to damage the PBA.

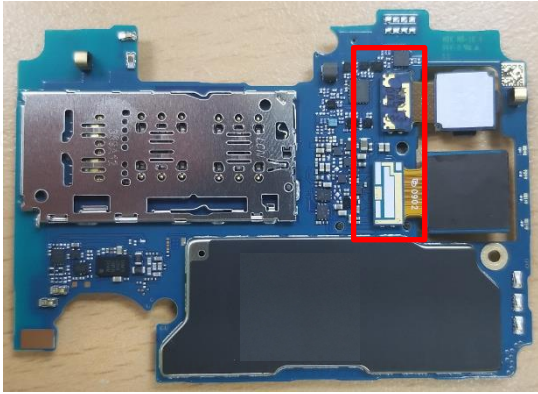
Confidential and proprietary-the contents in this service guide subject to change without prior notice

Distribution, transmission, or infringement of any content or data from this document without Samsung's written authorization is strictly prohibited.

7. Level 2 Repair

5

1) Disassemble Camera Connector(2ea).



6

1) Disassemble SUB PBA Connector.
2) Disassemble coaxial cable
3) Disassemble SUB PBA.



※ Caution

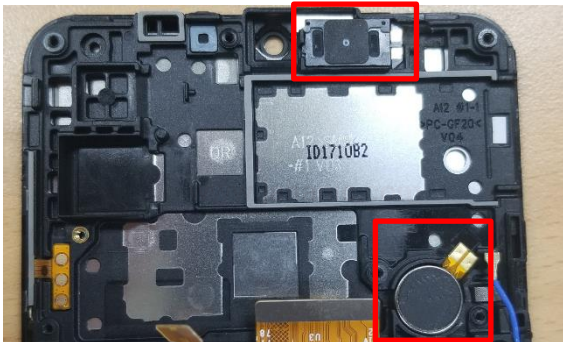
- 1) Be care of scratch.
- 2) Be careful not to damage the PBA.

※ Caution

- 1) Be care of scratch.
- 2) Be careful not to damage the PBA.

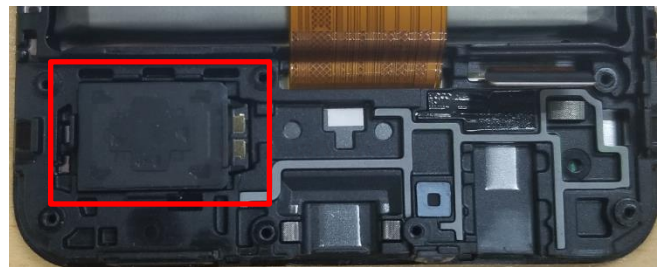
7

Detach other components.



8

Detach other components.



※ Caution

Be care of motor & RCV damage.

※ Caution

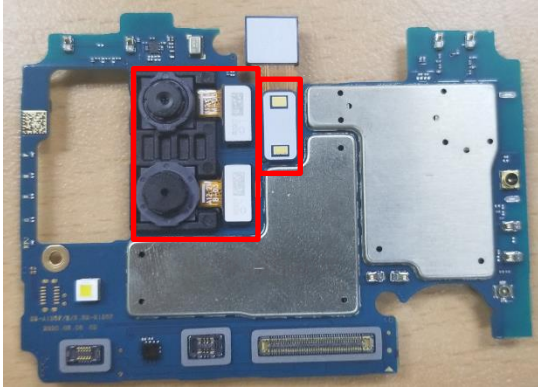
Be care of SPK damage.

7. Level 2 Repair

7-4. Assembly

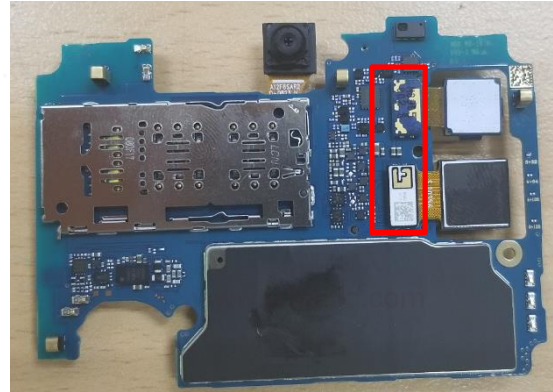
1

- 1) Assemble Main Camera(2ea).
- 2) Assemble VT Camera.



2

- 1) Assemble Main Camera(2ea).

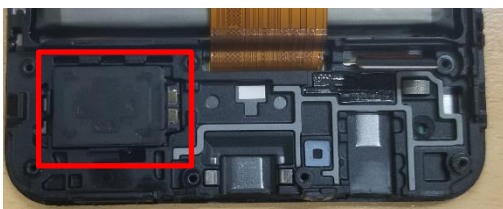
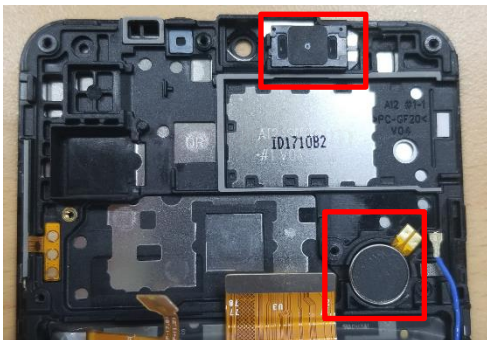


※ Caution
Be care of PBA damages.

※ Caution
Be care of PBA damages.

3

- Assemble RCV, MOT, SPK.



※ Caution
Be care of RCV, NOT, SPK.

4

- 1) Assemble SUB PBA
- 2) Assemble SUB PBA connector
- 3) Assemble coaxial cable

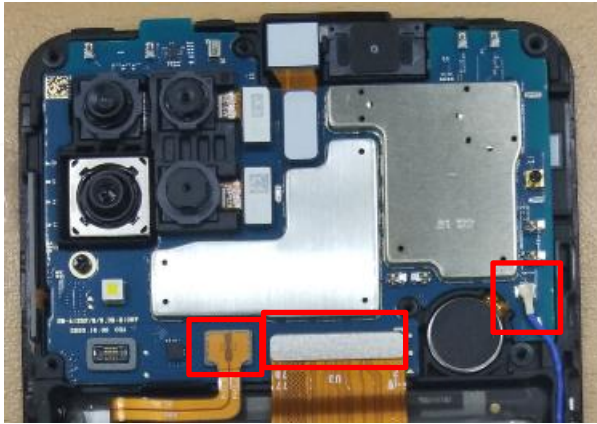


※ Caution
Be care of PBA damages.

7. Level 2 Repair

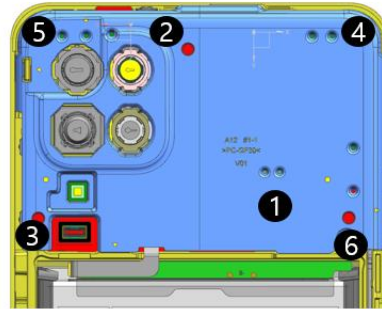
5

- 1) Assemble PBA
 - 2) Assemble LCD connector
 - 3) Assemble Battery connector
 - 4) Assemble coaxial cable
 - 5) Screw insertion 1 Point.
- * Torque Value : 1.1 ±7%



6

- 1) Assemble REAR TOP
 - 2) Screw insertion 6 Point.
- * Torque Value : 1.4 ±7%

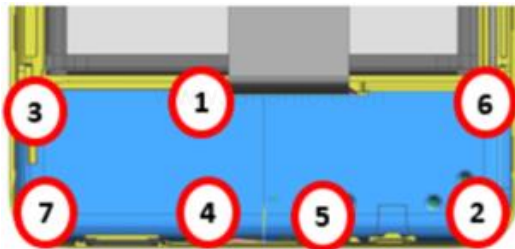


※ **Caution**
Be care of PBA damages.

※ **Caution**
Be care of scratch and REAR damage.

7

- 1) Assemble REAR BTM
 - 2) Screw insertion 7 Point.
- * Torque Value : 1.4 ±7%



※ **Caution**
Be care of scratch and REAR damage.

8

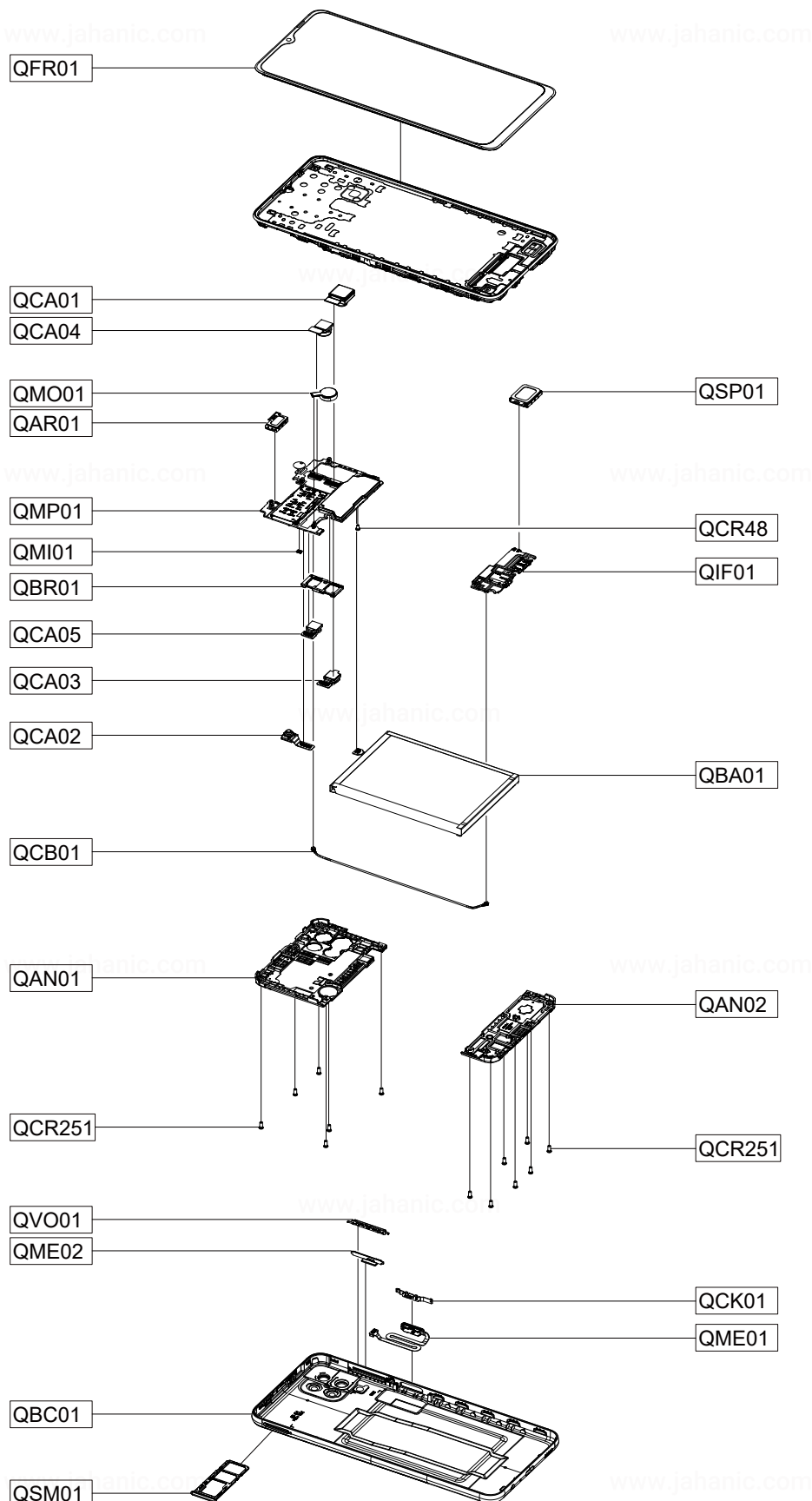
- 1) Assemble Power key connector.
- 2) Rear Cover.
- 3) Insert SIM Tray on side.



※ **Caution**
Be care of scratch and REAR damage.

4. Exploded View and Parts List

4-1. Cellular phone Exploded View



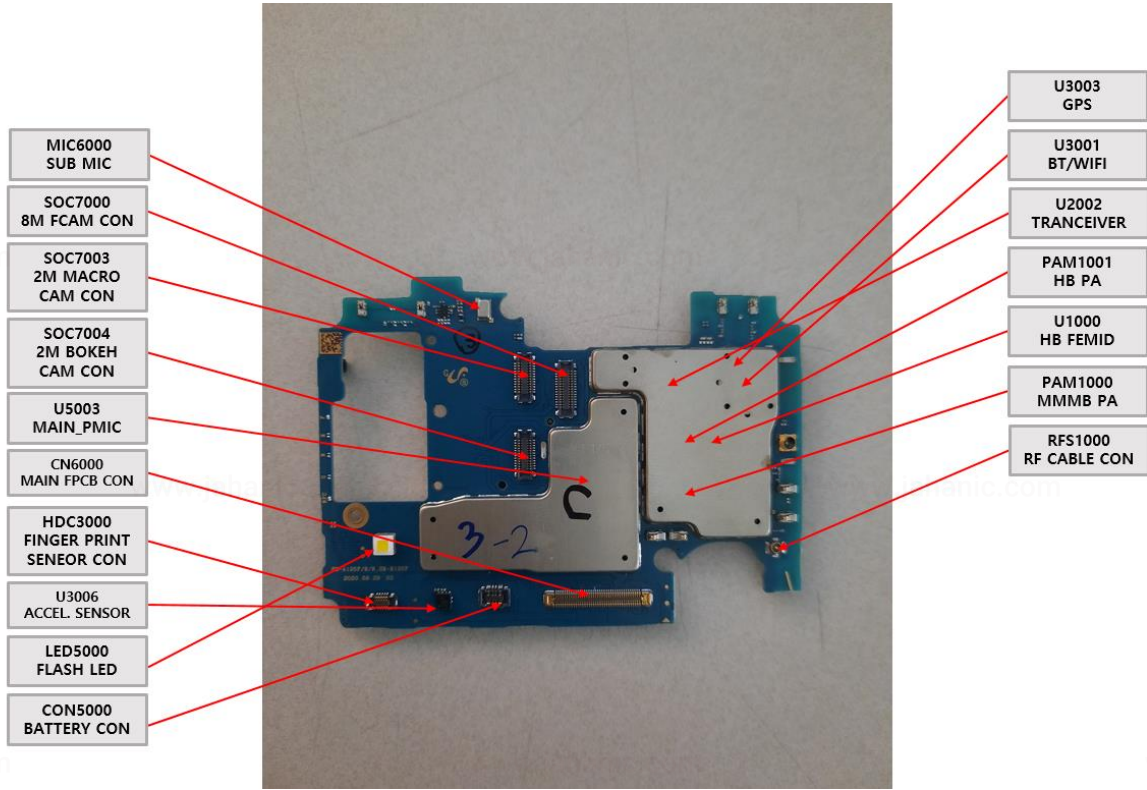
Confidential and proprietary-the contents in this service guide subject to change without prior notice

Distribution, transmission, or infringement of any content or data from this document without Samsung's written authorization is strictly prohibited.

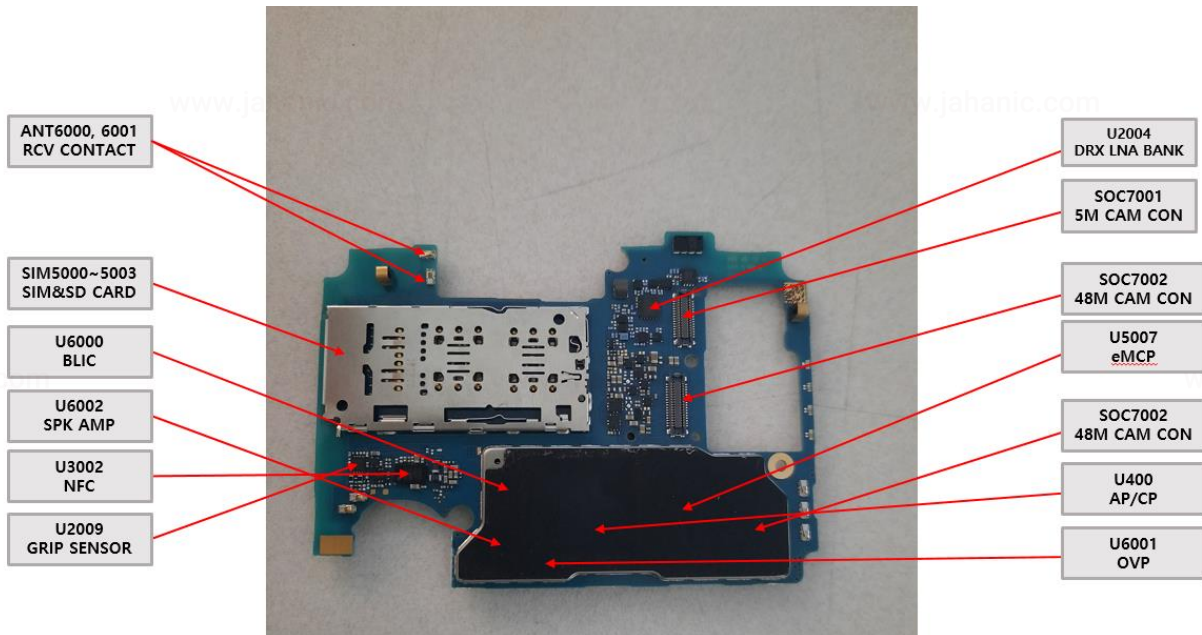
8. Level 3 Repair

8-1. Components Layout

MAIN PBA (TOP SIDE)

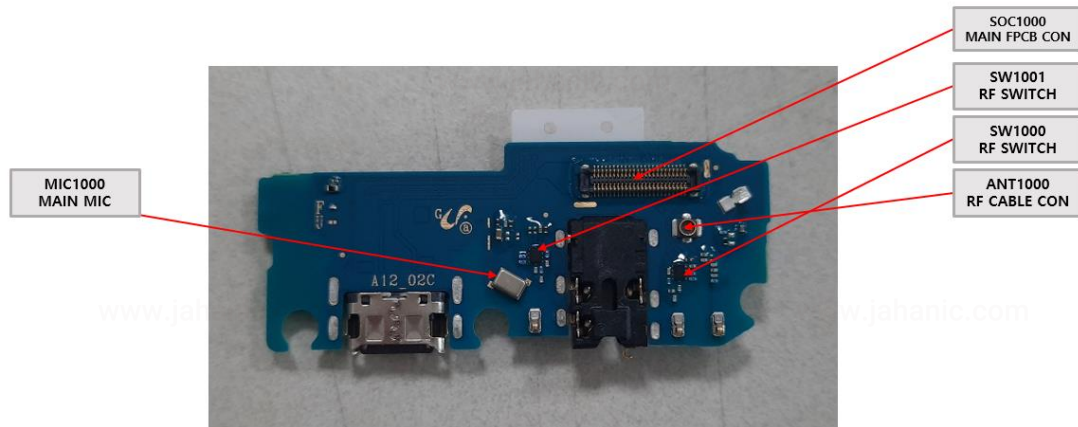


MAIN PBA (BOTTOM SIDE)

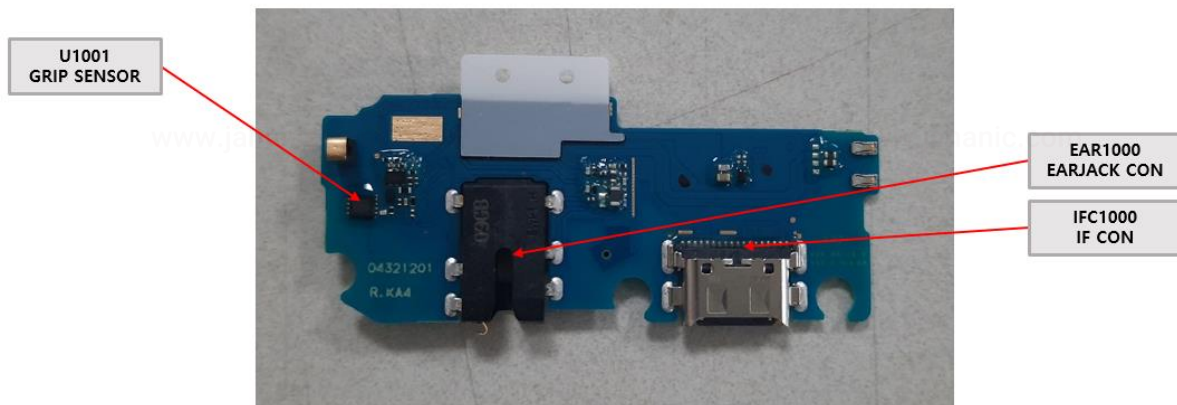


8. Level 3 Repair

SUB PBA (TOP SIDE)



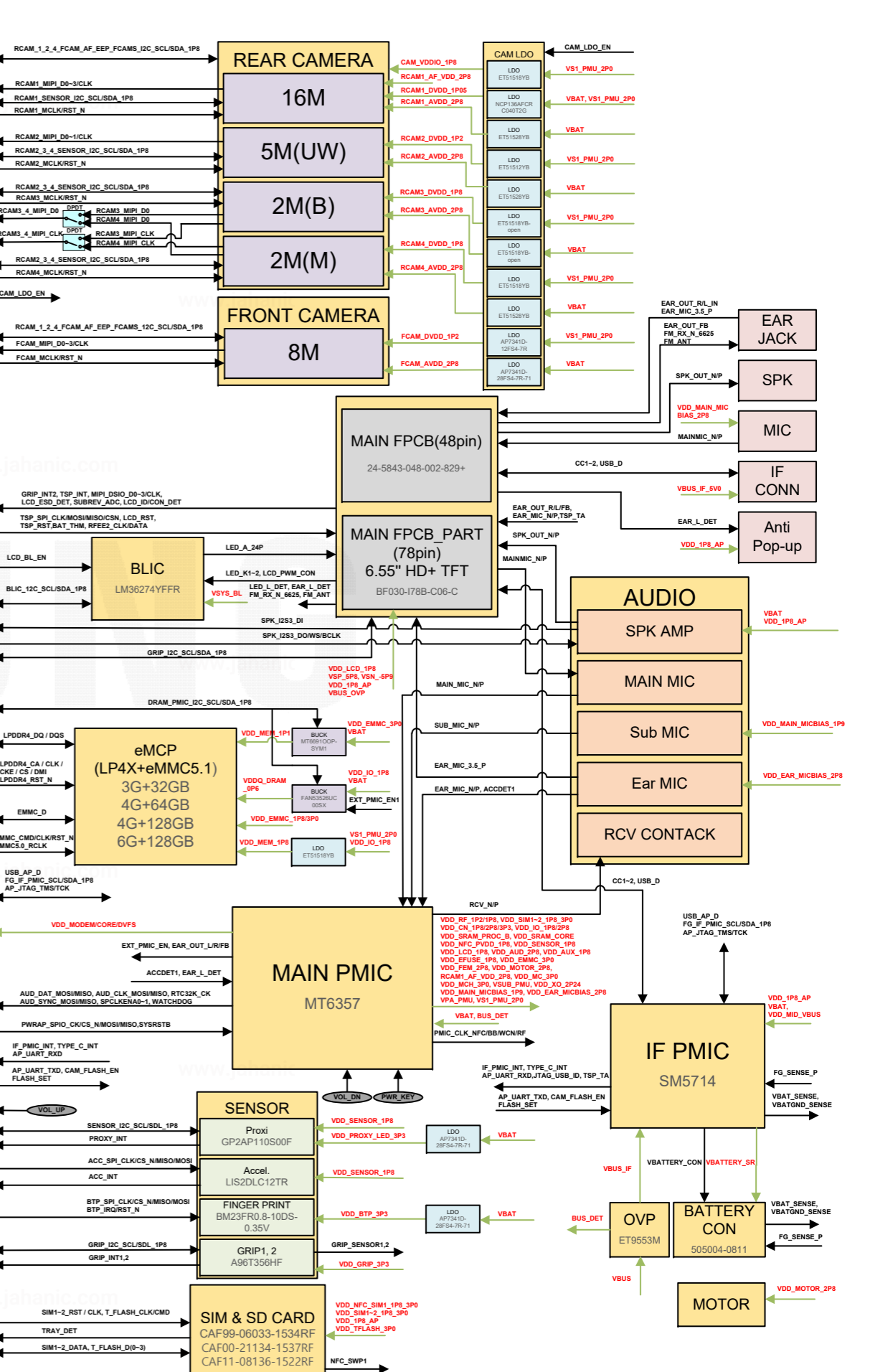
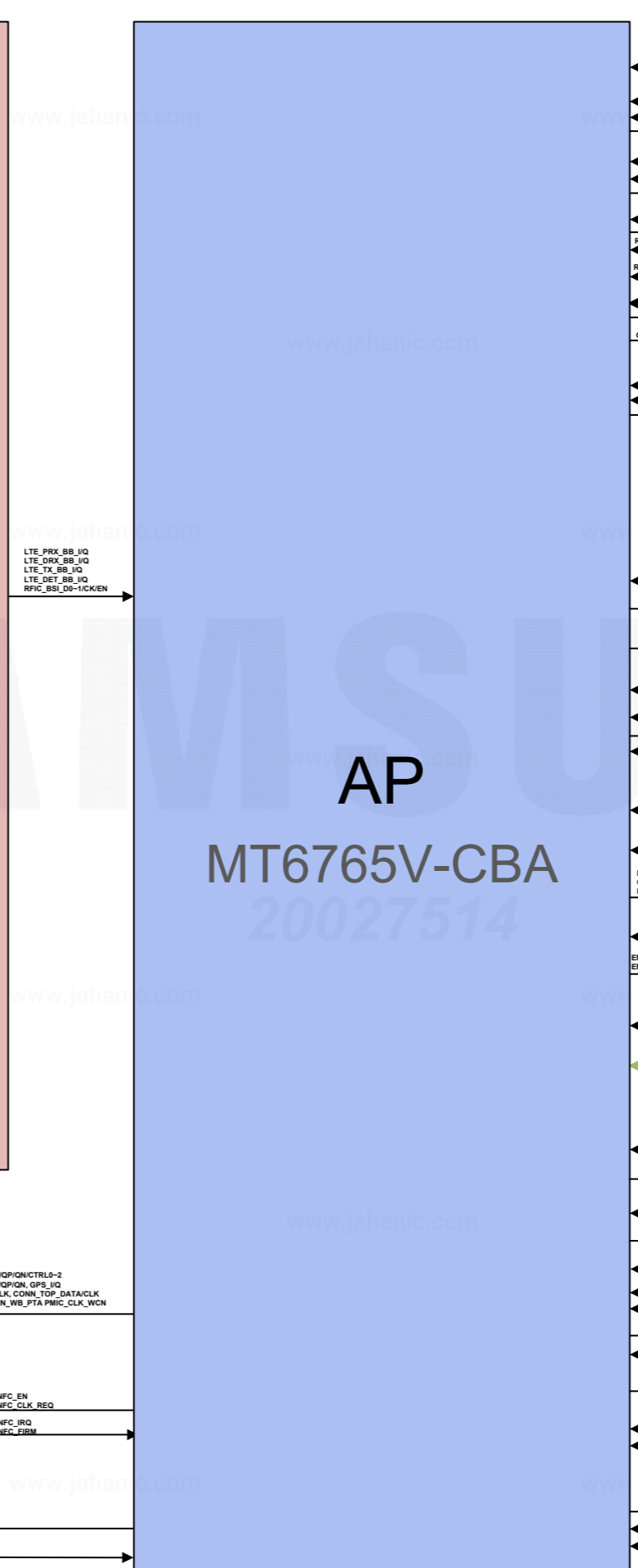
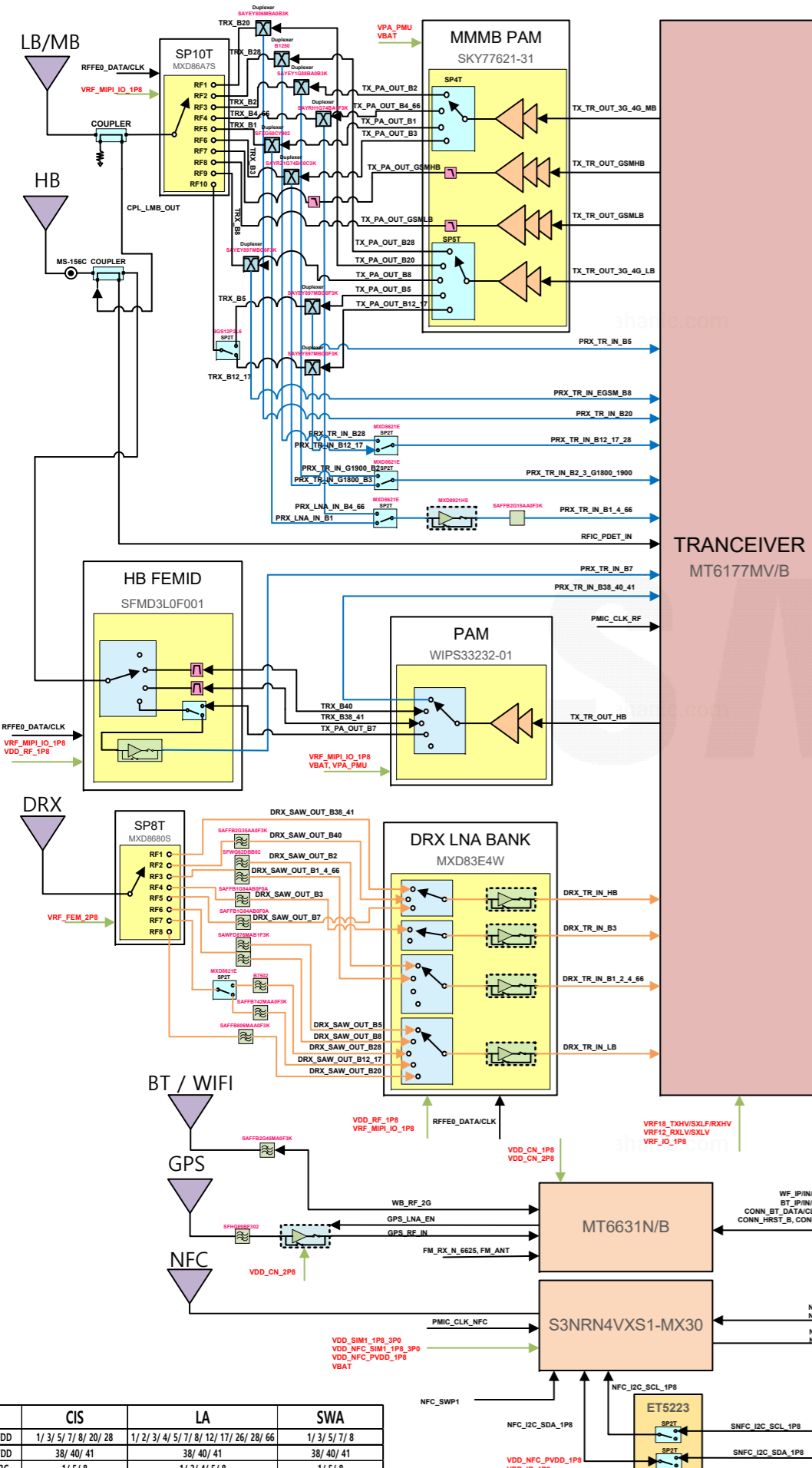
SUB PBA (BOTTOM SIDE)



RF

AP

BB



AP

MT6765V-CBA

20027514

	CIS	LA	SWA
FDD	1/3/5/7/8/20/28	1/2/3/4/5/7/8/12/17/26/28/66	1/3/5/7/8
TDD	38/40/41	38/40/41	38/40/41
3G	1/5/8	1/2/4/5/8	1/5/8
2G	850/900/1800/1900	850/900/1800/1900	850/900/1800/1900

SM-A125F

U3000

SIM5001

SIM5002

SIM5000

SIM5003

SOC7001

SOC7002

SC7000

U400

U5007

U3002

U6000

L6001

L6000

L6000

C6832

C6837

U6000

L6003

C6800

C6801

C6802

C6803

C6804

C6805

C6806

C6807

U5002

L5007

C5805

C5804

C5806

C5807

C5808

C5809

C5810

C5811

BOTH7000

CON7000

CON7001

CON7002

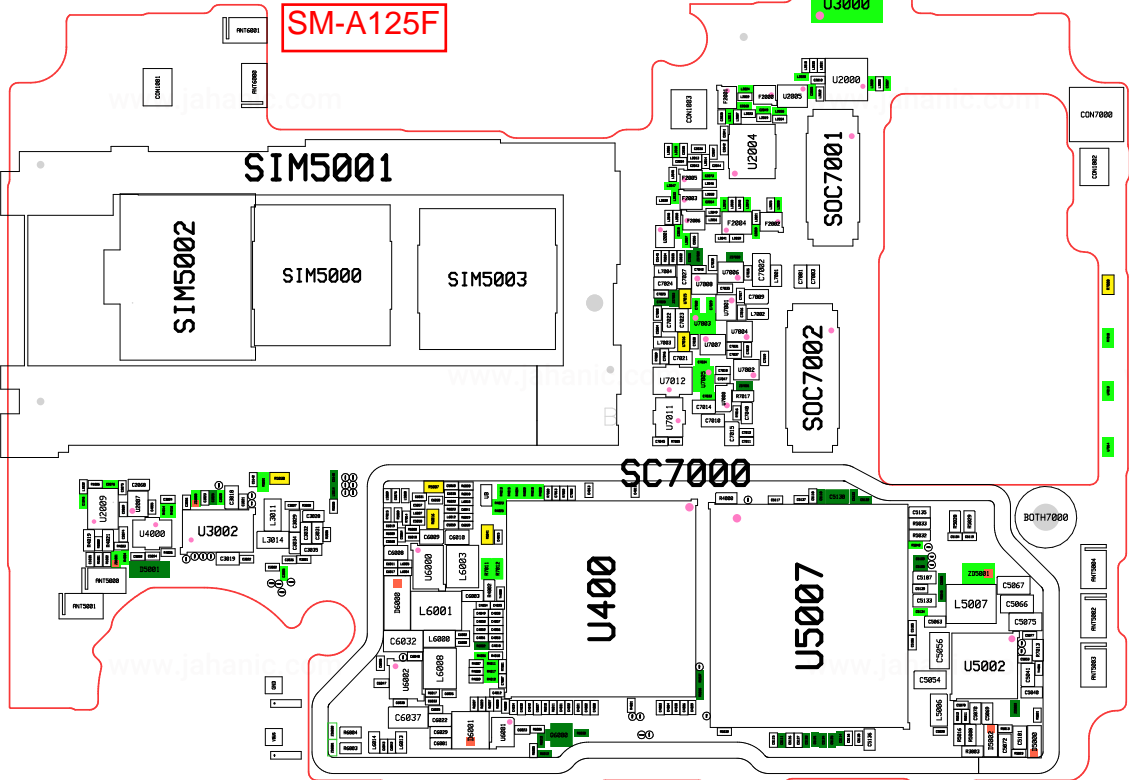
CON7003

CON7004

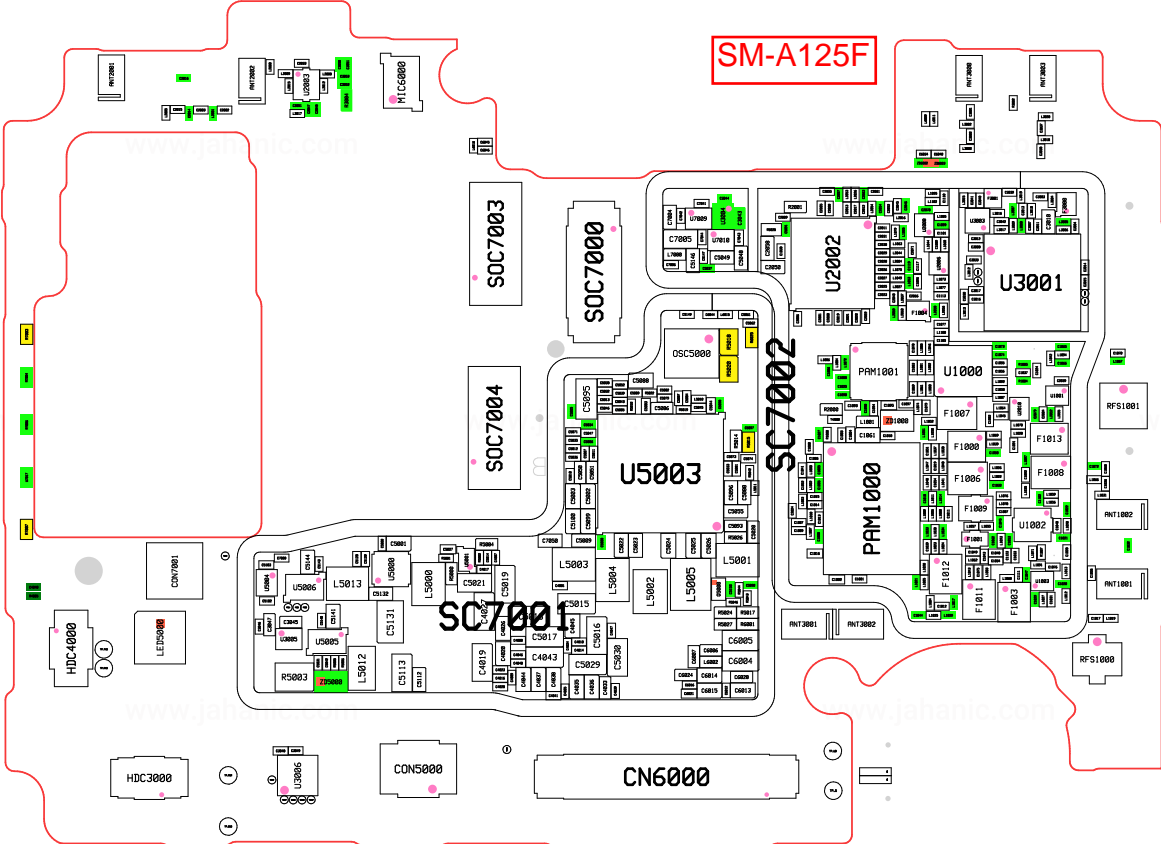
CON7005

CON7006

CON7007



SM-A125F



www.jahanic.com

www.jahanic.com

www.jahanic.com

www.jahanic.com

SM-A125M

SIM5001

SIM5002

SIM5000

SIM5003

U3000

SOC7001

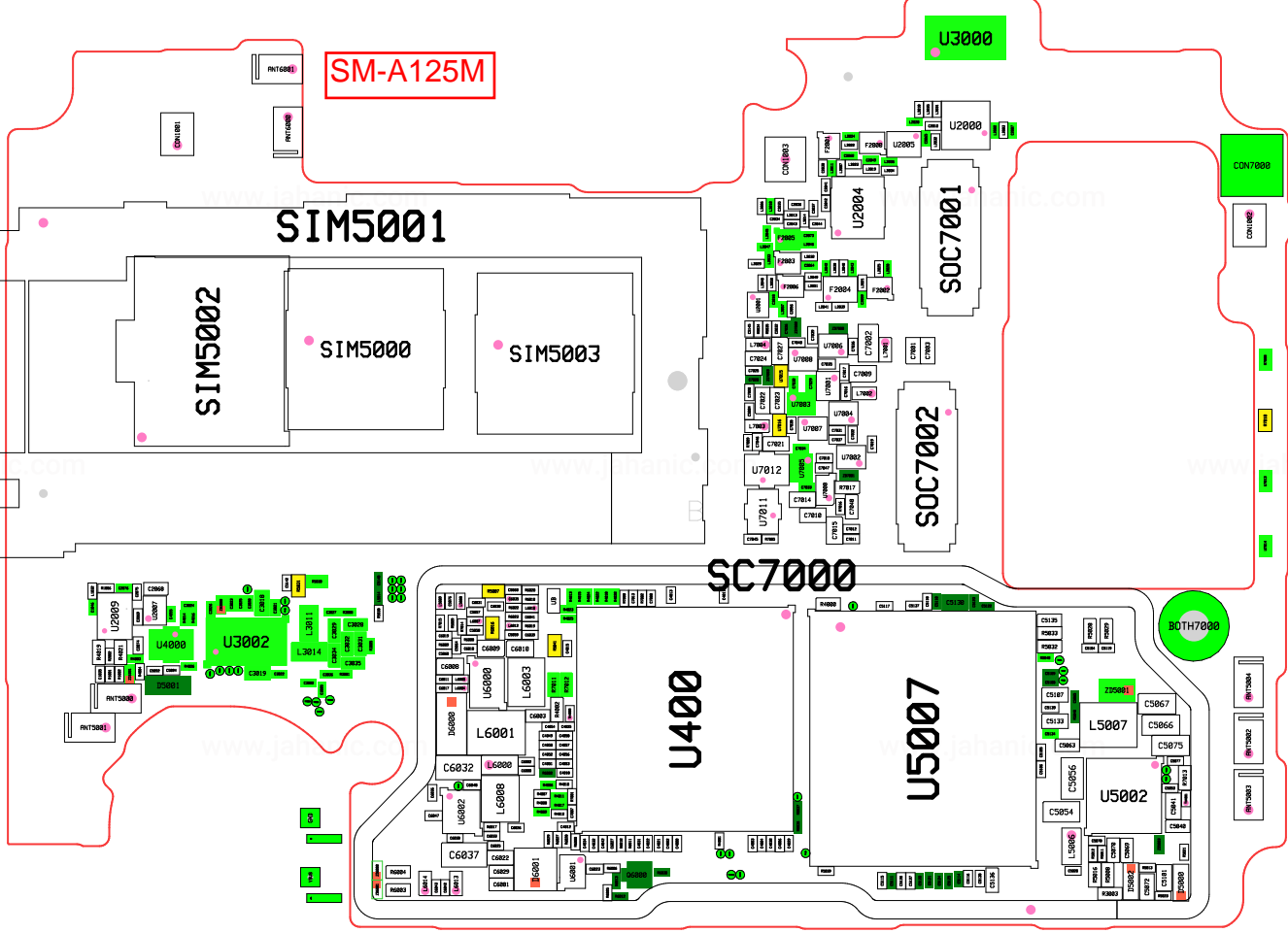
SOC7002

SC7000

U400

U5007

50TH7000



SM-A125M

CON7001

MIC6000

SOC7003

SOC7000

SOC7004

U5003

U2002

U3001

SC7002

HDC4000

LED10000

SC7001

PAM1000

HDC3000

U3006

CON5000

CN6000

RFS1001

PNT1002

PNT1001

RFS1000

www.ti.com

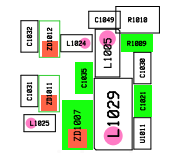
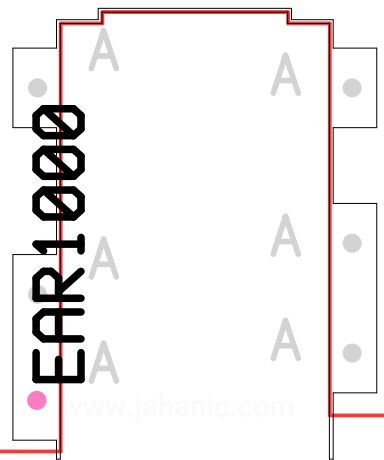
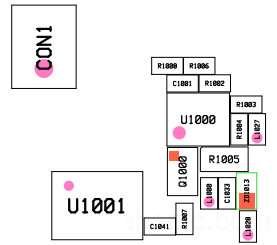
www.ti.com

www.ti.com

SM-A125F/M
Common

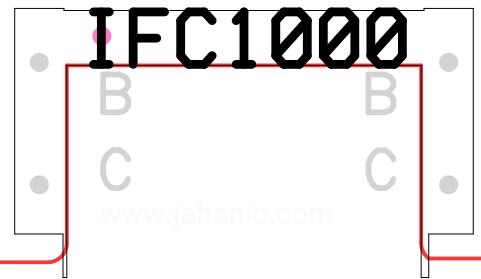
www.jahanic.com

www.jahanic.com

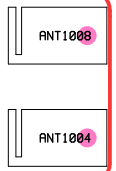


www.jahanic.com

www.jahanic.com



www.jahanic.com



SM-A125F/M
Common

T1000
R1012

R1014

R1015

www.jahanic.com

www.jahanic.com

www.jahanic.com

SOC1000

CON3

C1028 U1019
C1026 C1025 L1022
C1023 R1013
U1013 C1108
C1070 U1042

L1053 SK1001
L1059 L1050 L1052
C1092 L1031
C1054

MIC1000

ANT1002

A
A
A

ANT1000

U1012 C1093 C1077
C1025 L1030
L1013 L1078
L1060 L1082
L1003 C1024
L1008 C1008
C1018

ANT1007

L1032 C1093 C1077
C1025 L1030
L1013 L1078
L1060 L1082

ANT1003




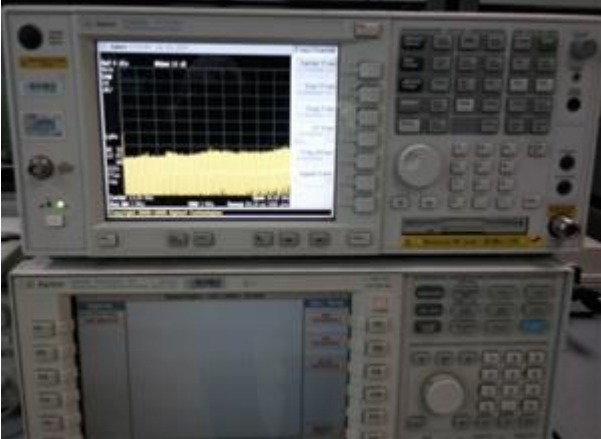

L1001 R1009 R1001
C1027

B
B

C
C

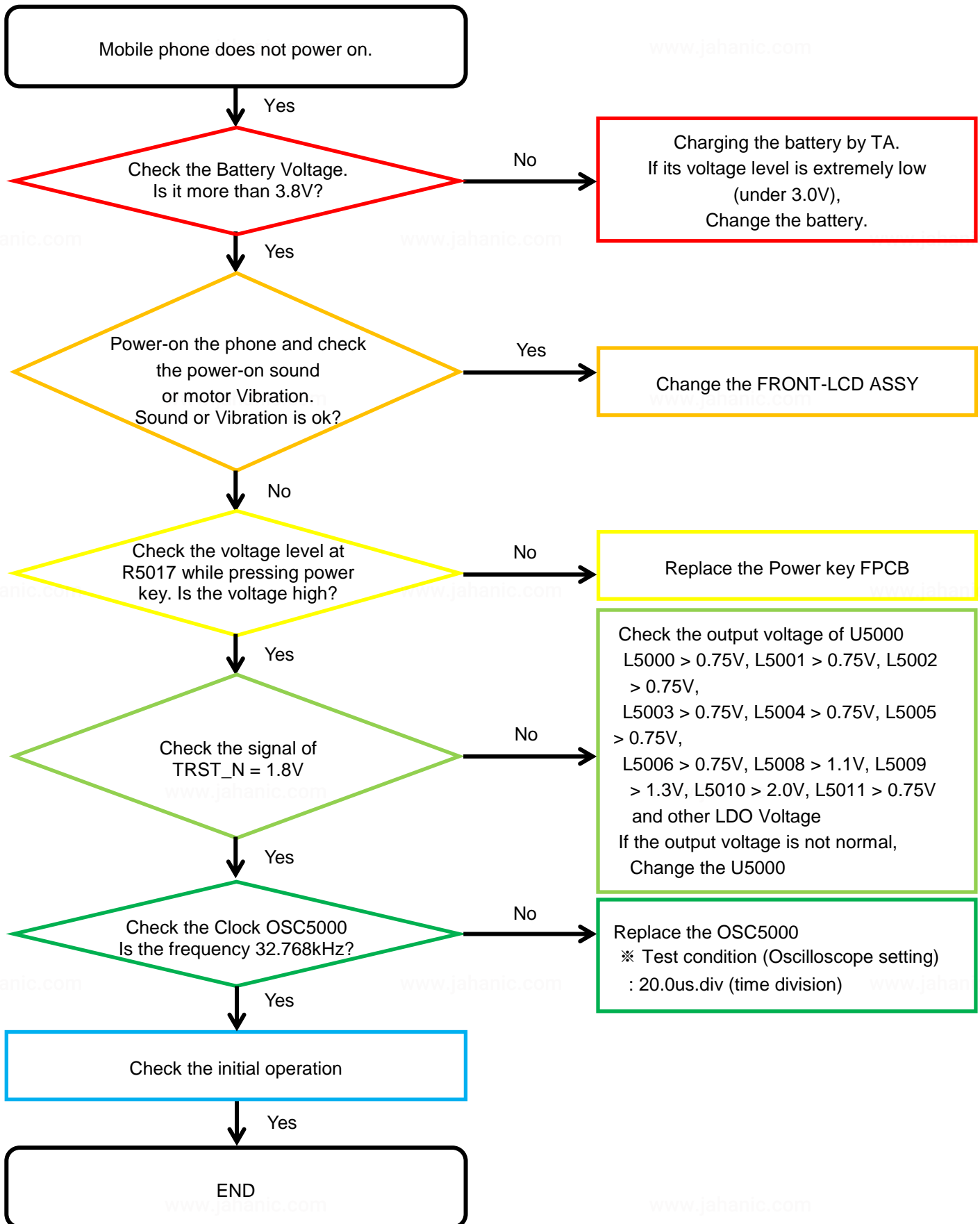
8. Level 3 Repair

8-2. Flow chart of Troubleshooting.

 <p>A Tektronix DPO7104 Digital Phosphor Oscilloscope with a black screen showing a horizontal blue line and a vertical dashed line. The device has a control panel with numerous knobs and buttons on the right side.</p>	 <p>A yellow digital multimeter with a LCD screen, a yellow carrying case, a CD-ROM, and test leads (red and black) with alligator clips.</p>
<p>Oscilloscope</p>	<p>Digital Multimeter</p>
 <p>A white power supply unit with a digital display showing "30000V_0000A". It has several ports on the front and a control knob on the right.</p>	 <p>A pair of ESD safe tweezers and a long-handled driver screwdriver.</p>
<p>Power Supply</p>	<p>+ driver, ESD Safe Tweezer</p>
 <p>An 8960 & Spectrum Analyzer with a screen displaying a yellow waveform. It is a large, complex piece of equipment with many buttons and knobs.</p>	 <p>A blue and yellow soldering iron with a digital display showing "150". It is in a blue carrying case with a soldering tip.</p>
<p>8960 & Spectrum Analyzer</p>	<p>Soldering iron</p>

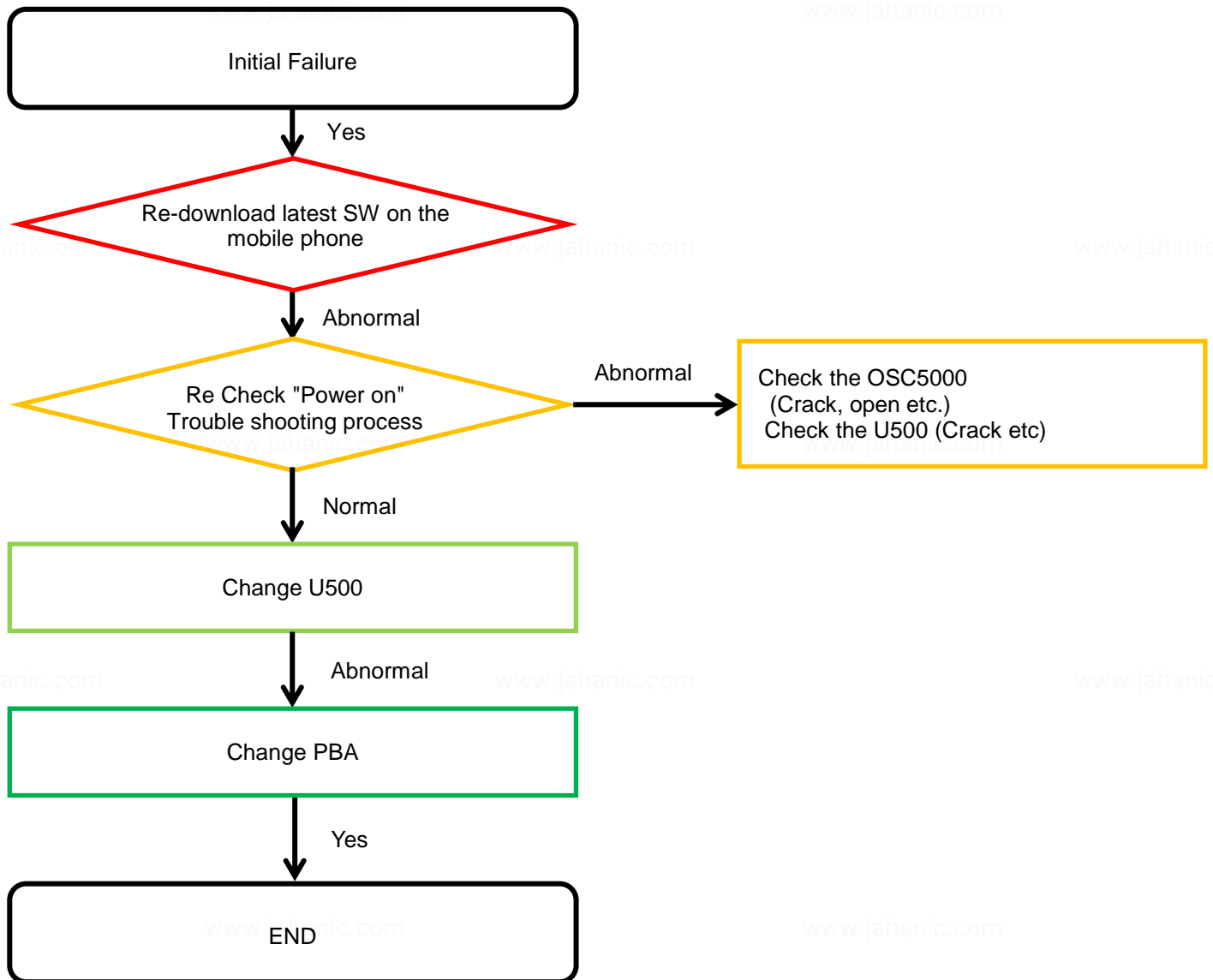
8. Level 3 Repair

8-3-1. Power On



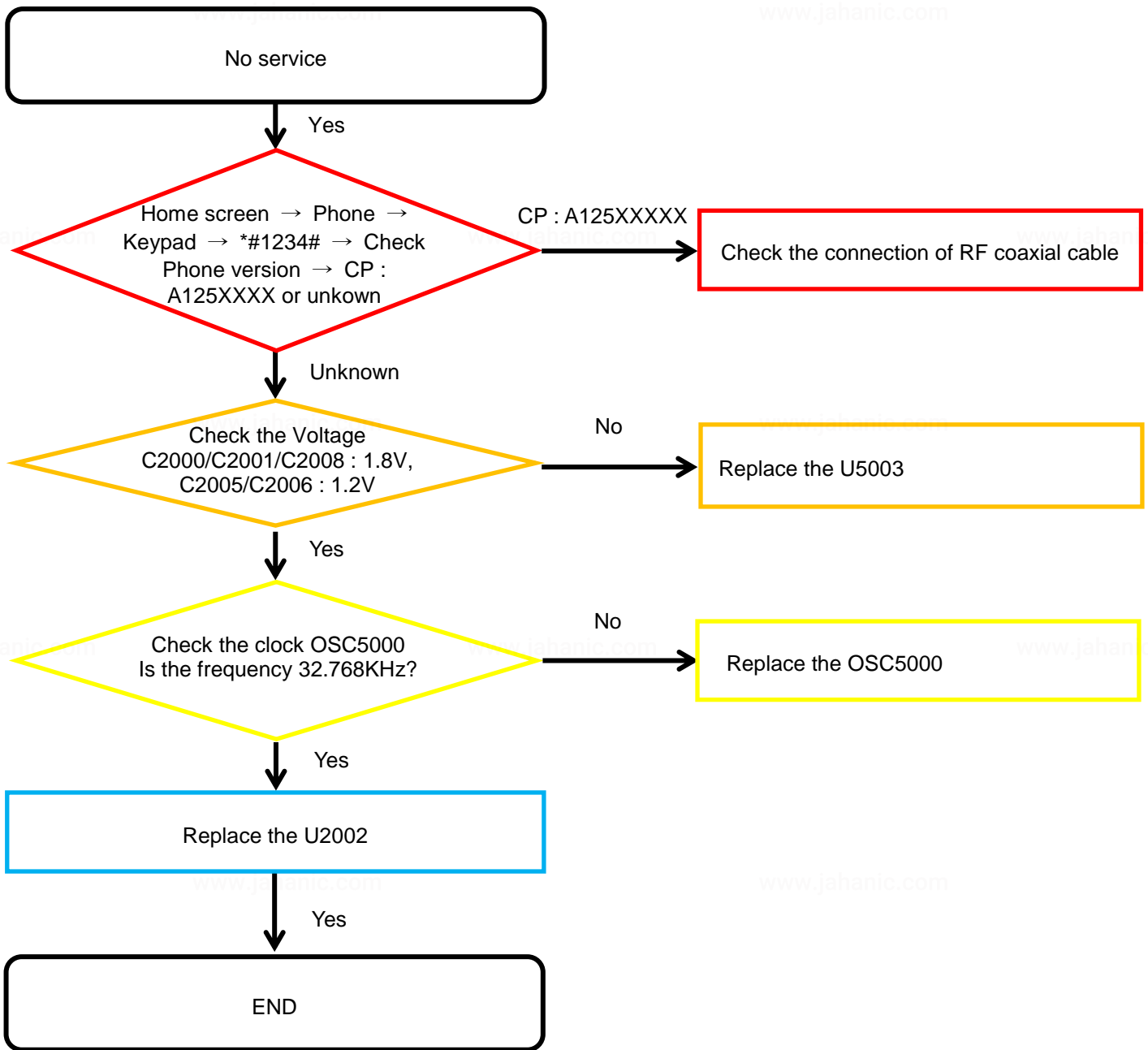
8. Level 3 Repair

8-3-2. Initial



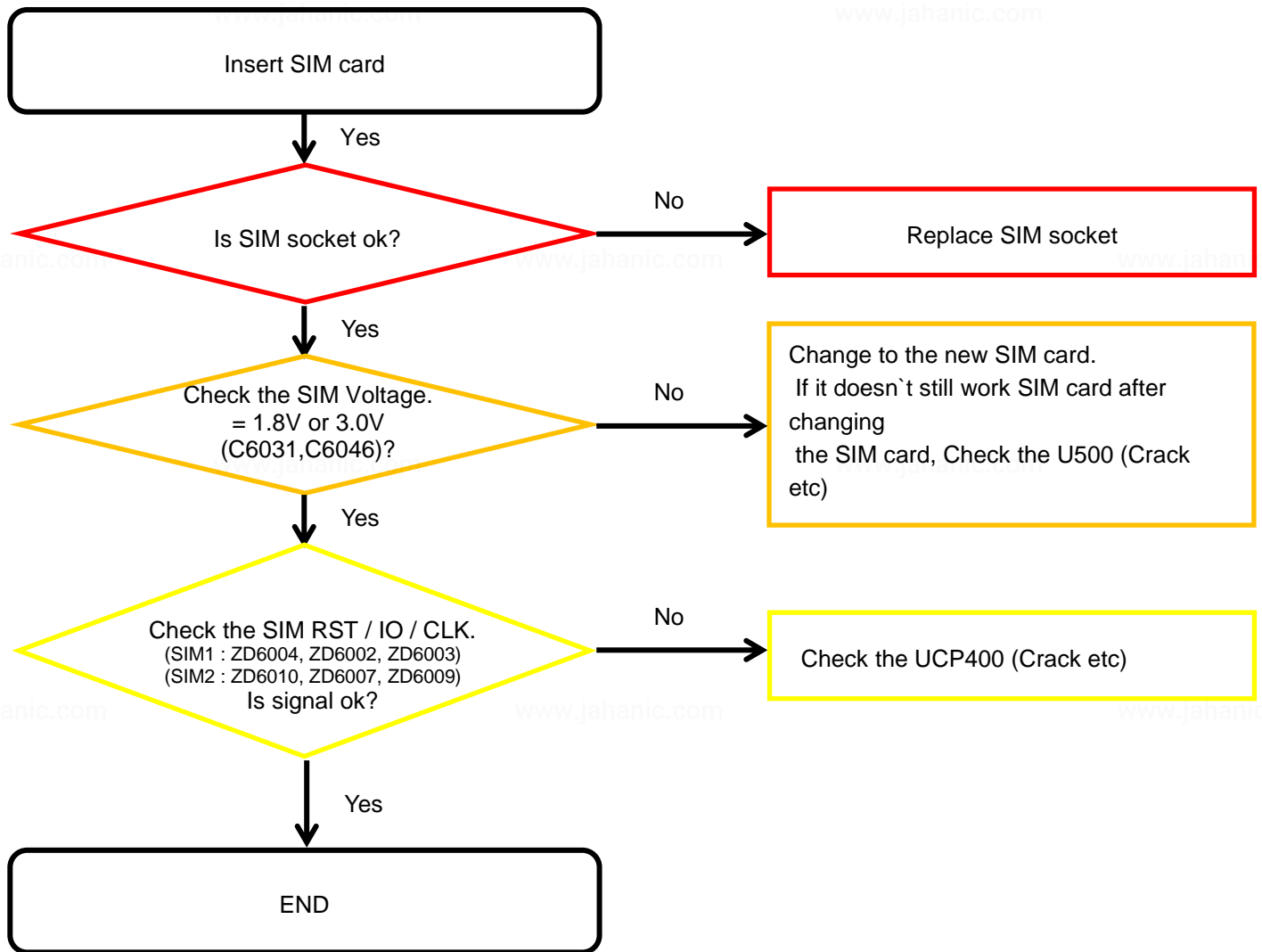
8. Level 3 Repair

8-3-3. No Service



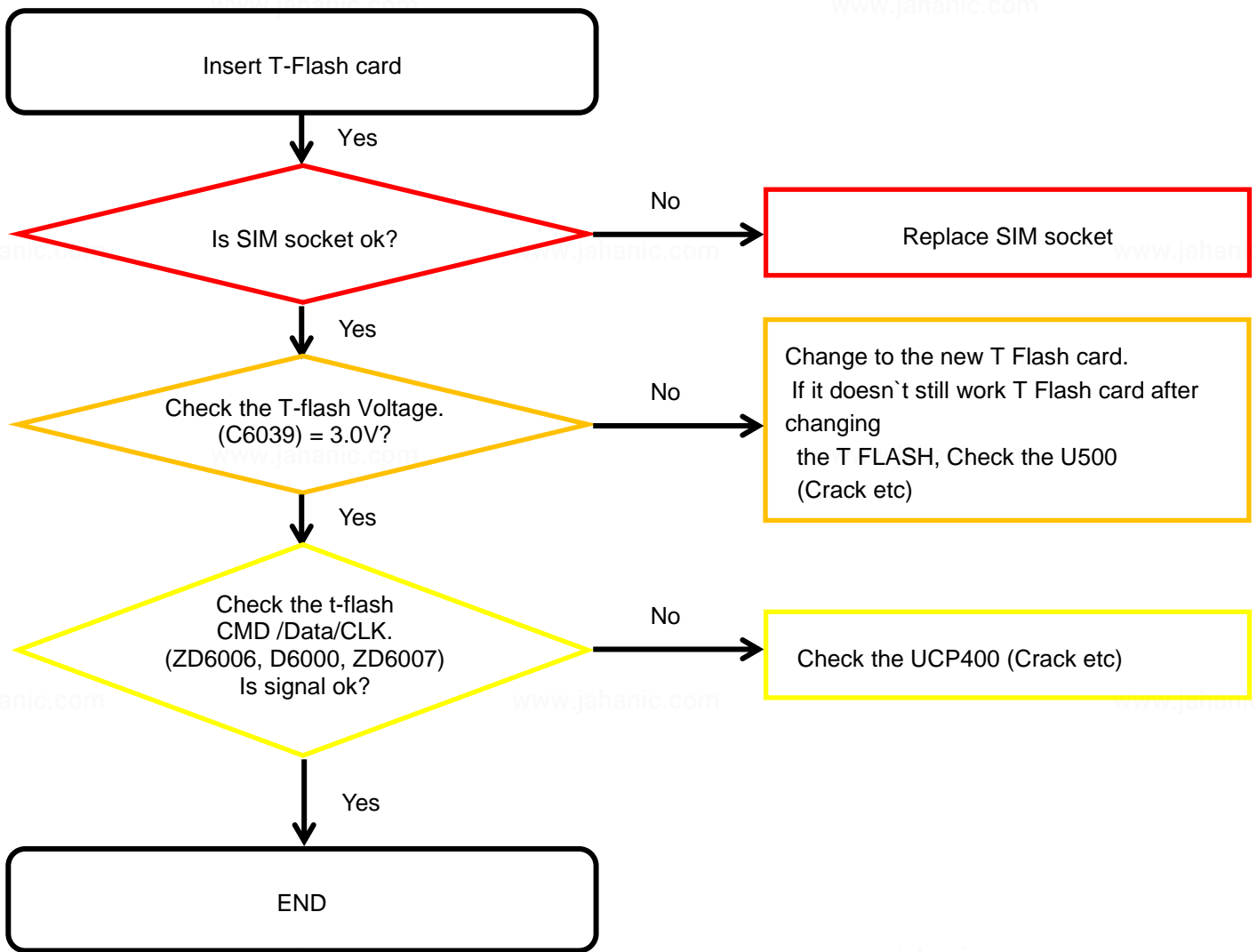
8. Level 3 Repair

8-3-4. SIM Part



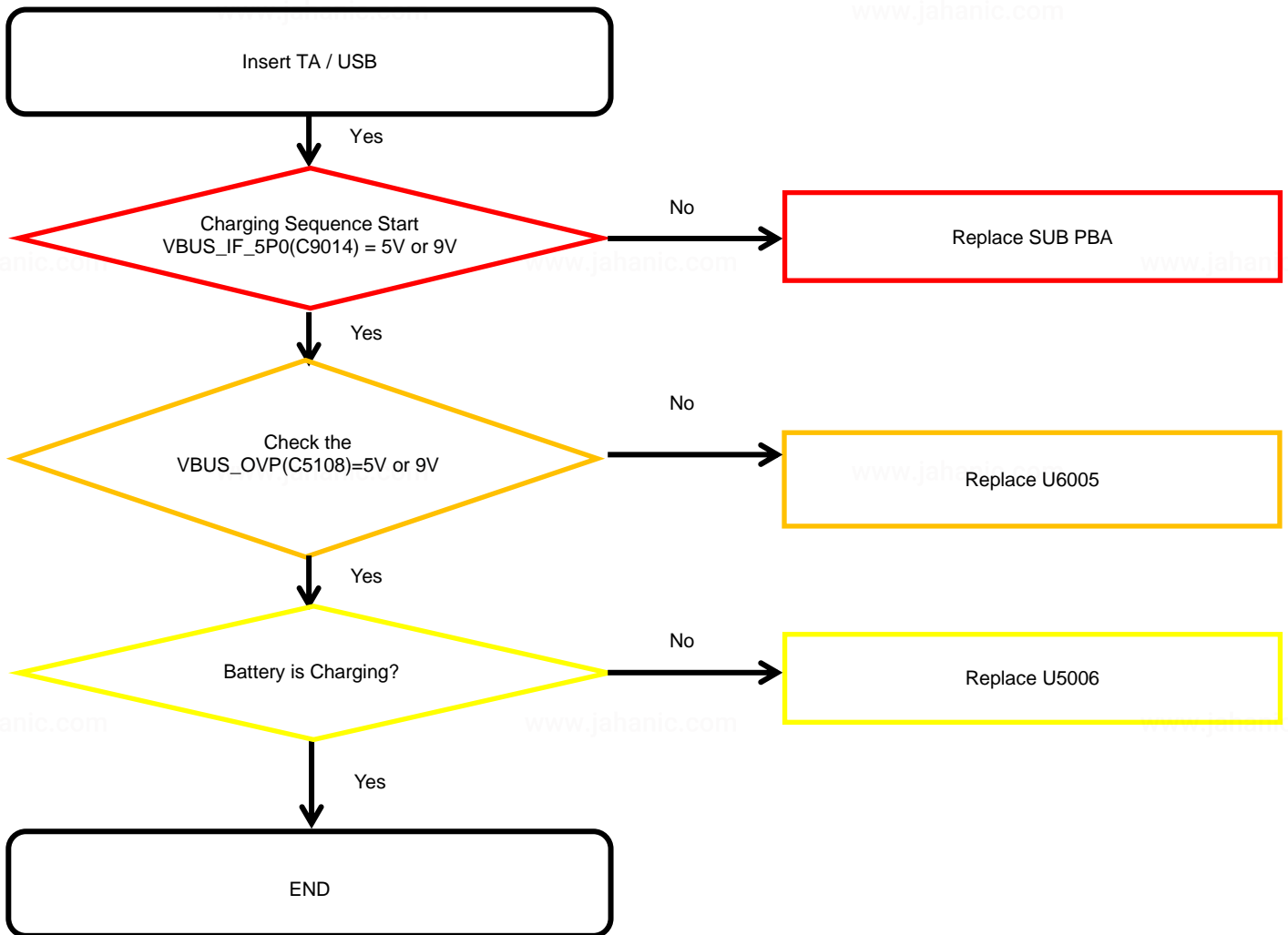
8. Level 3 Repair

8-3-5. T-Flash Part



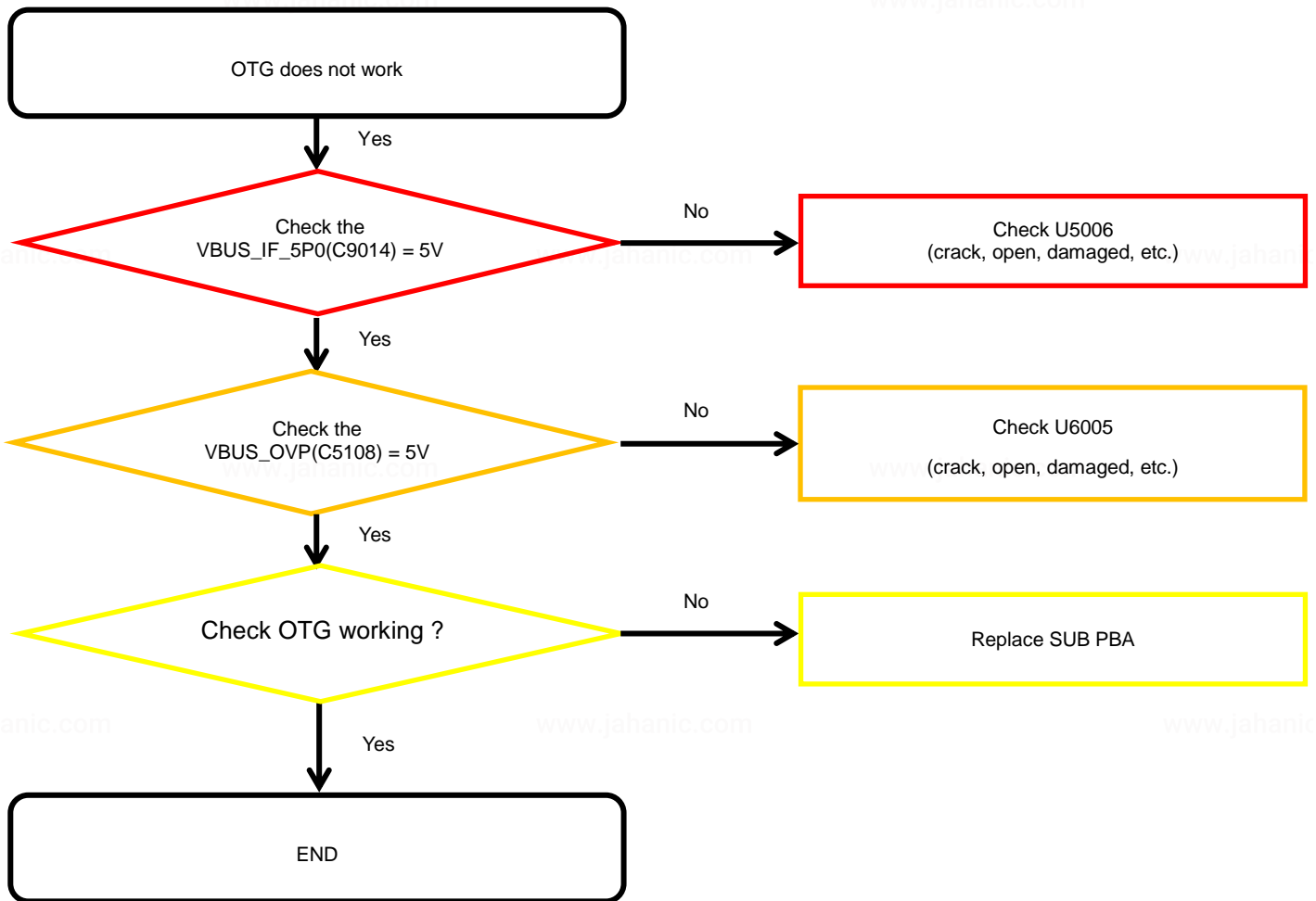
8. Level 3 Repair

8-3-6. Cable Charging Part



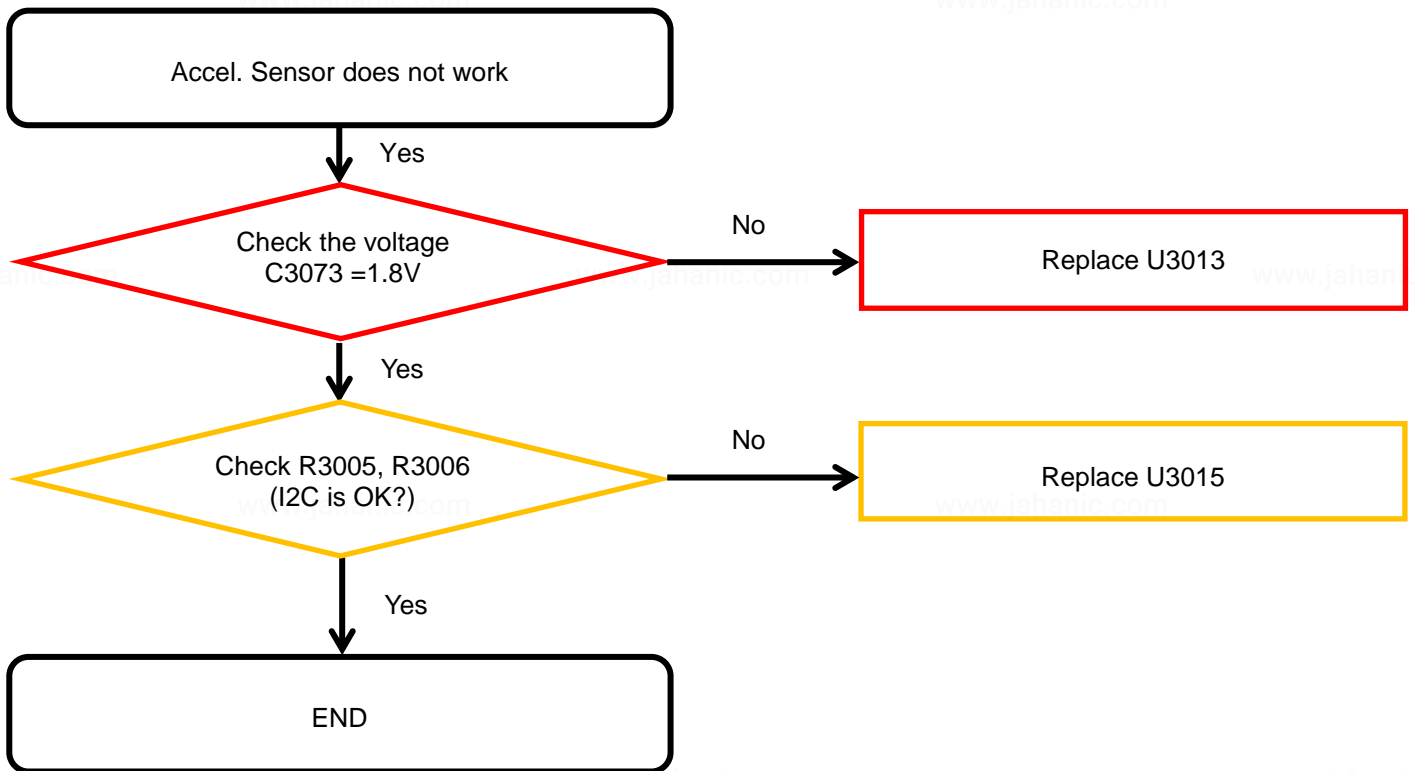
8. Level 3 Repair

8-3-7. OTG



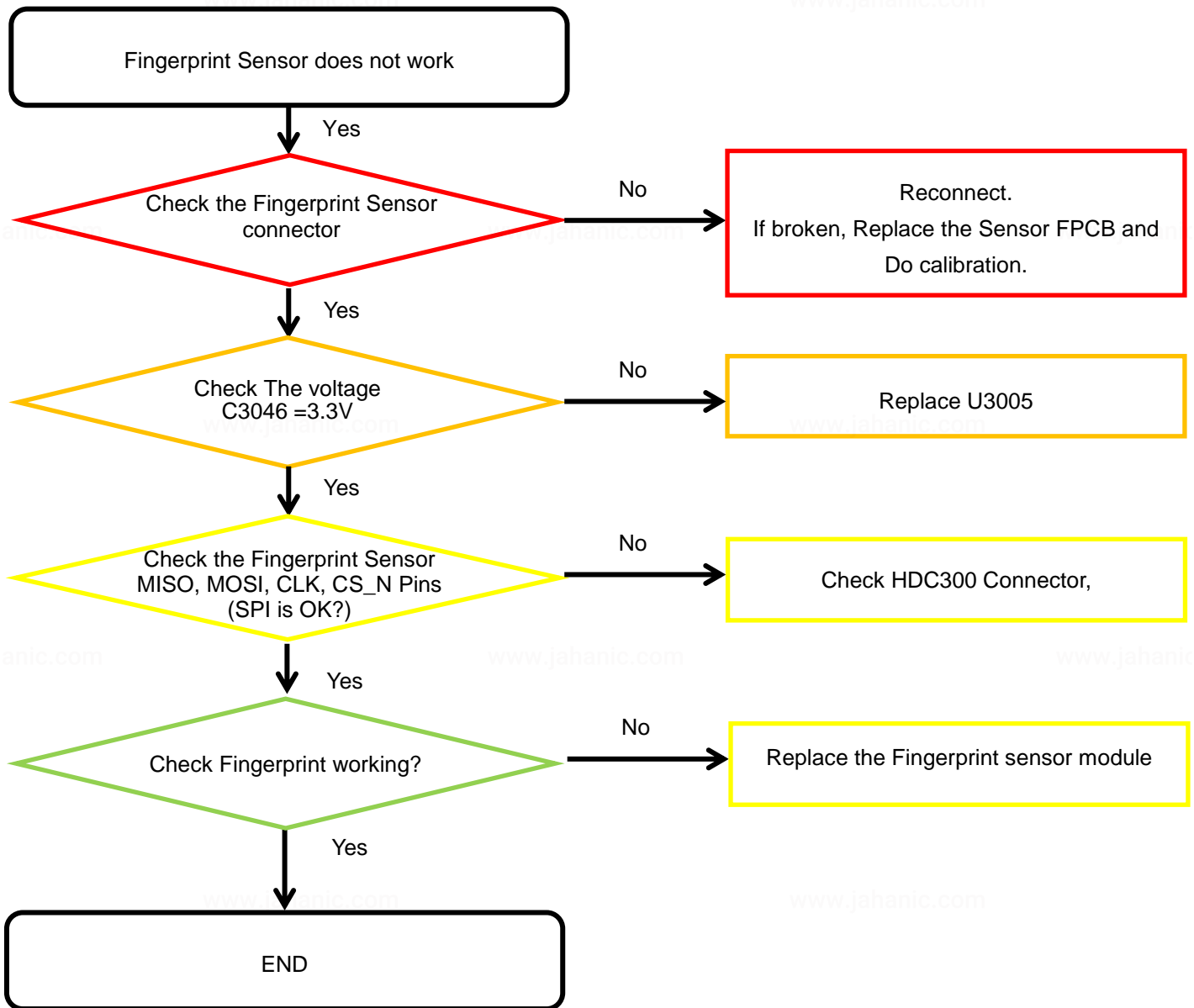
8. Level 3 Repair

8-3-8-1. Accel. Sensor



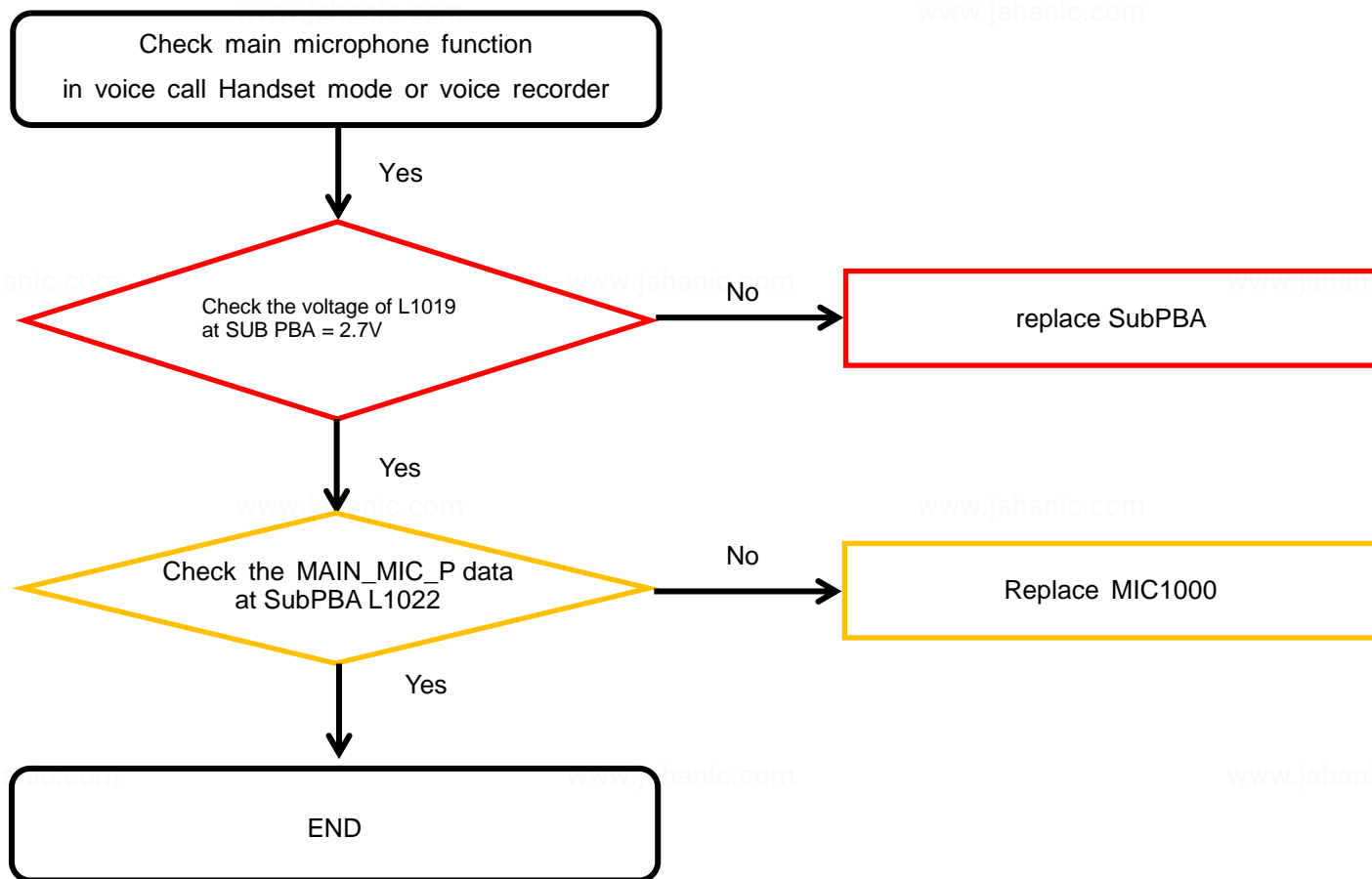
8. Level 3 Repair

8-3-8-2. Fingerprint Sensor



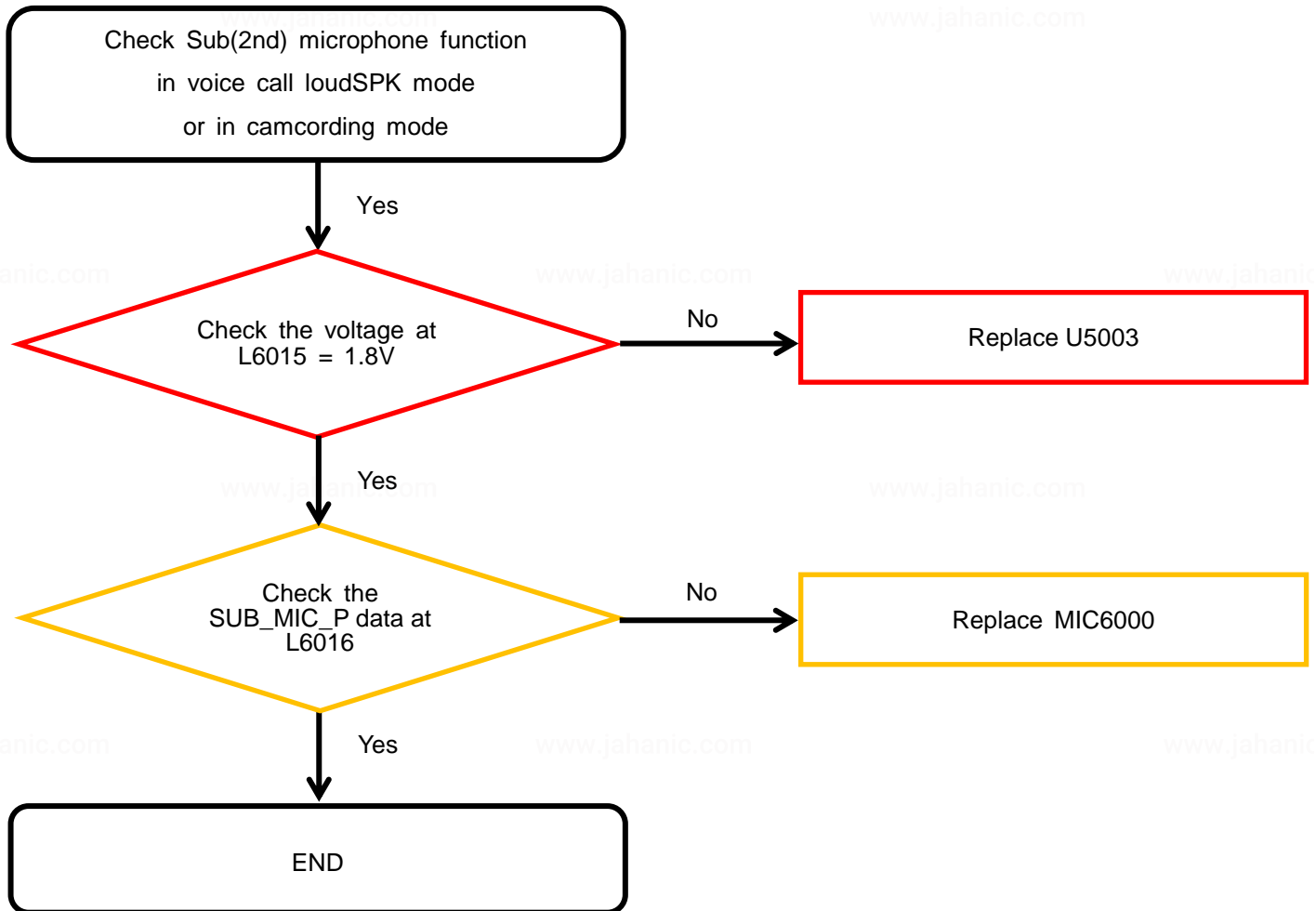
8. Level 3 Repair

8-3-9-1. Microphone Part - Main MIC



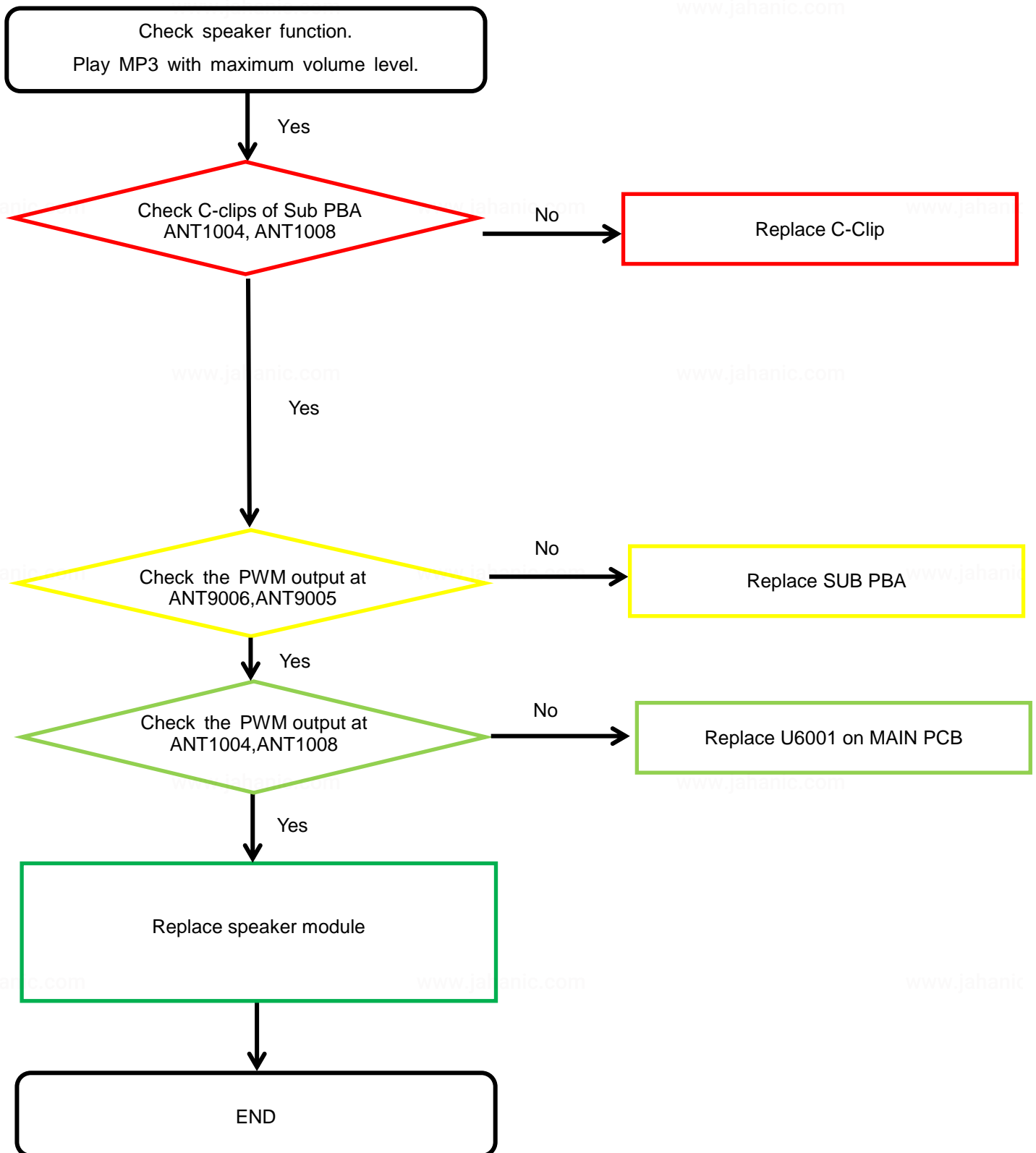
8. Level 3 Repair

8-3-9-2. Microphone Part - Sub(2nd) MIC



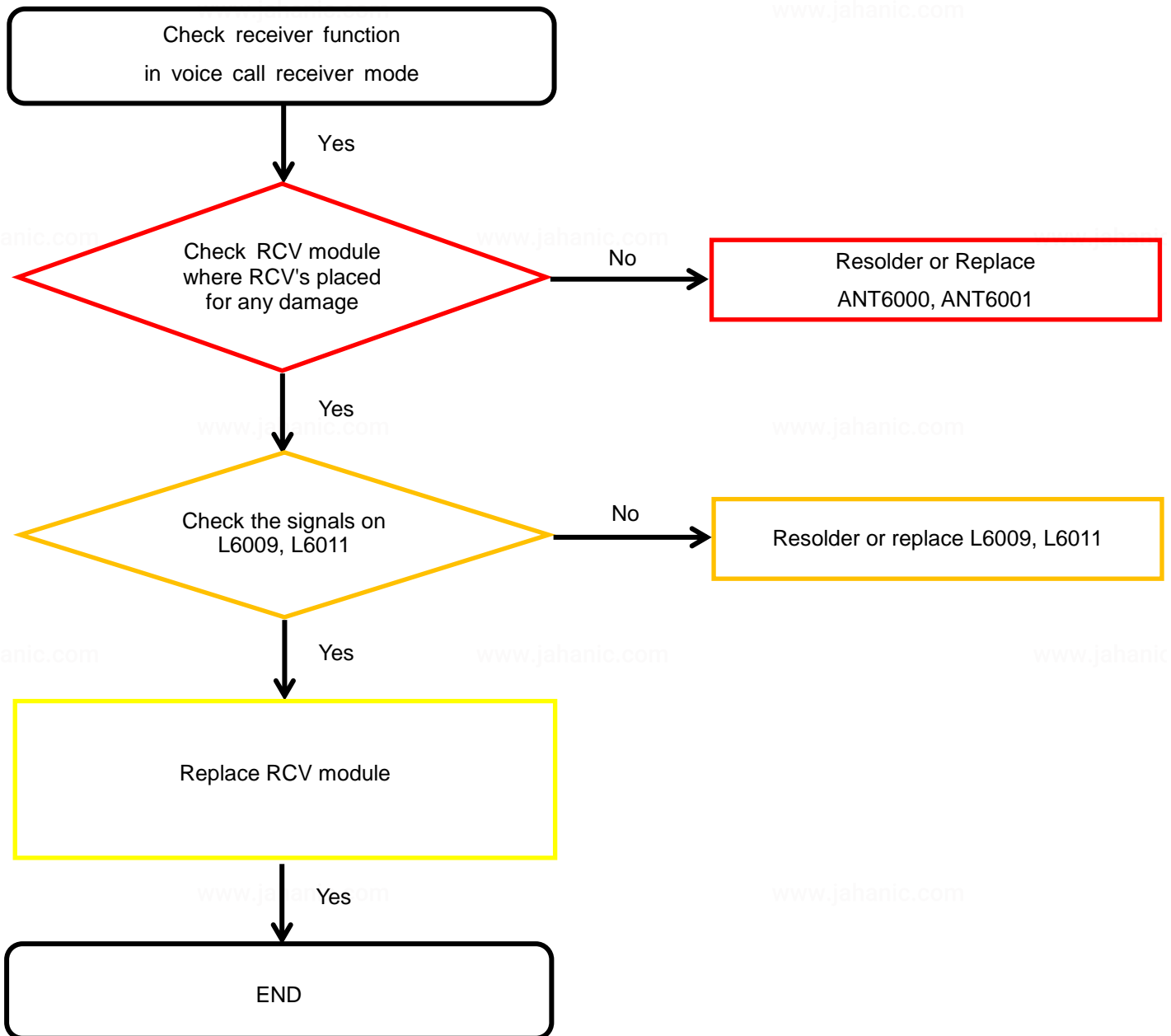
8. Level 3 Repair

8-3-10. Speaker Part



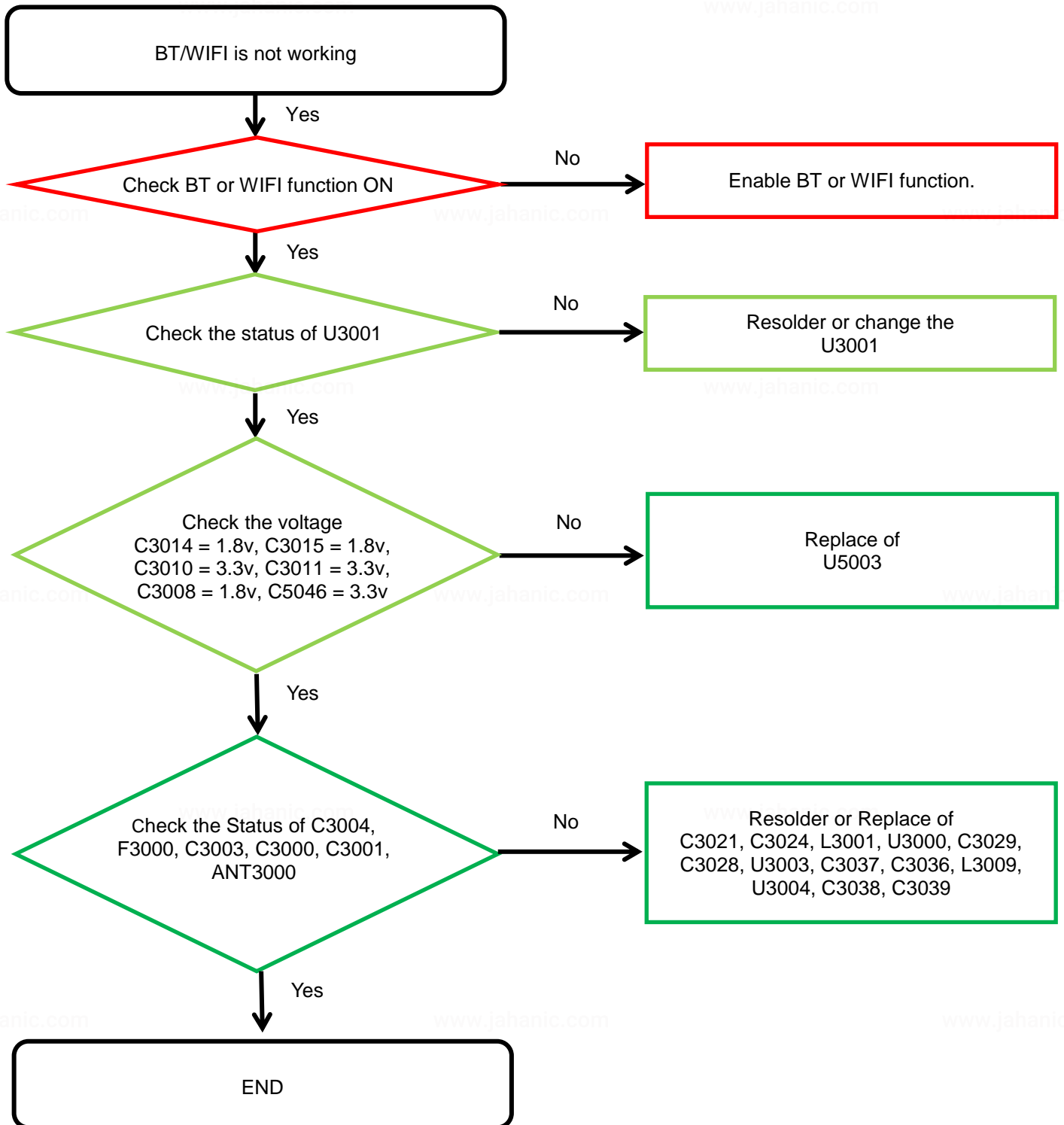
8. Level 3 Repair

8-3-11. Receiver Part



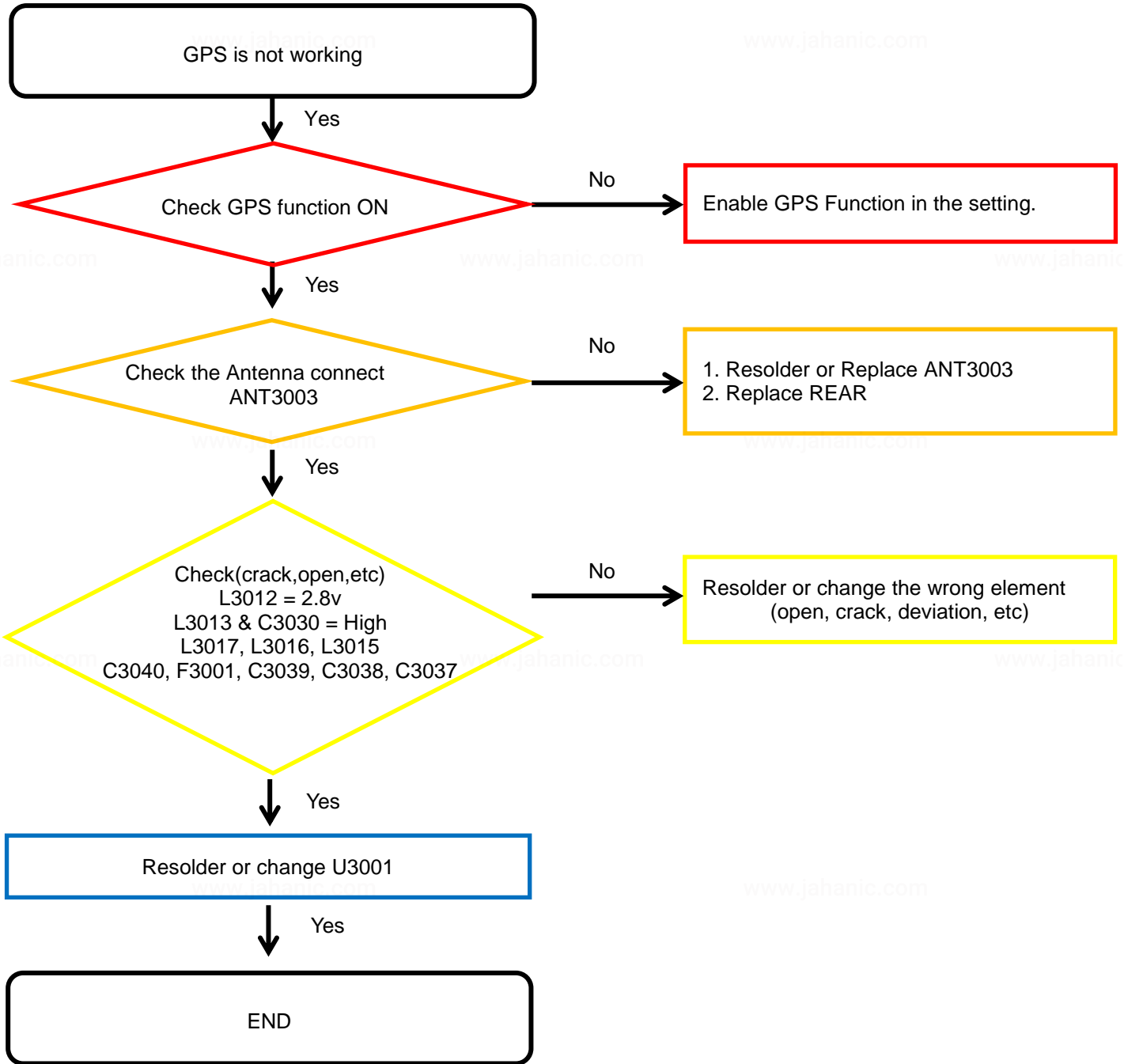
8. Level 3 Repair

8-3-12. BT/WIFI



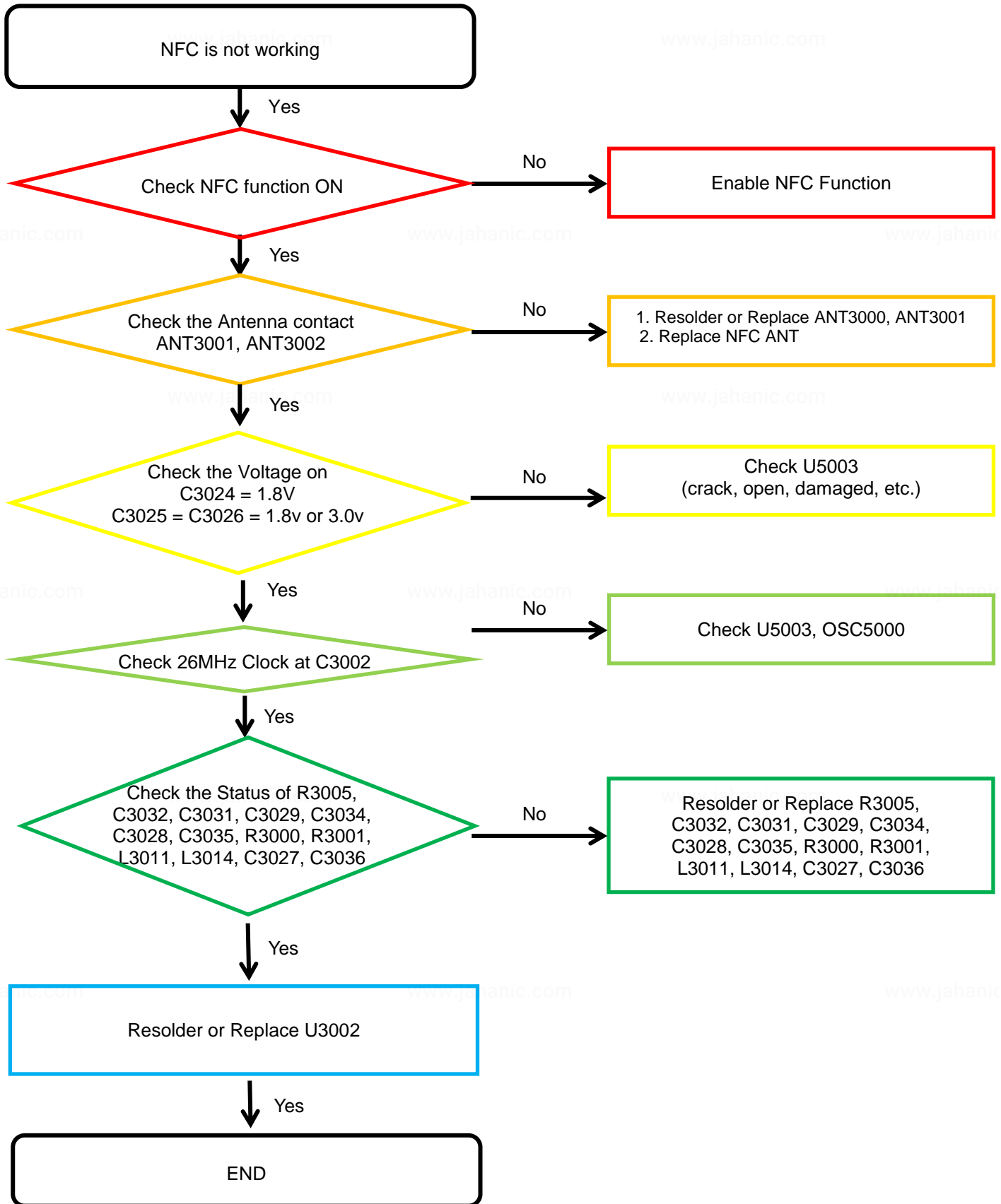
8. Level 3 Repair

8-3-13. GPS



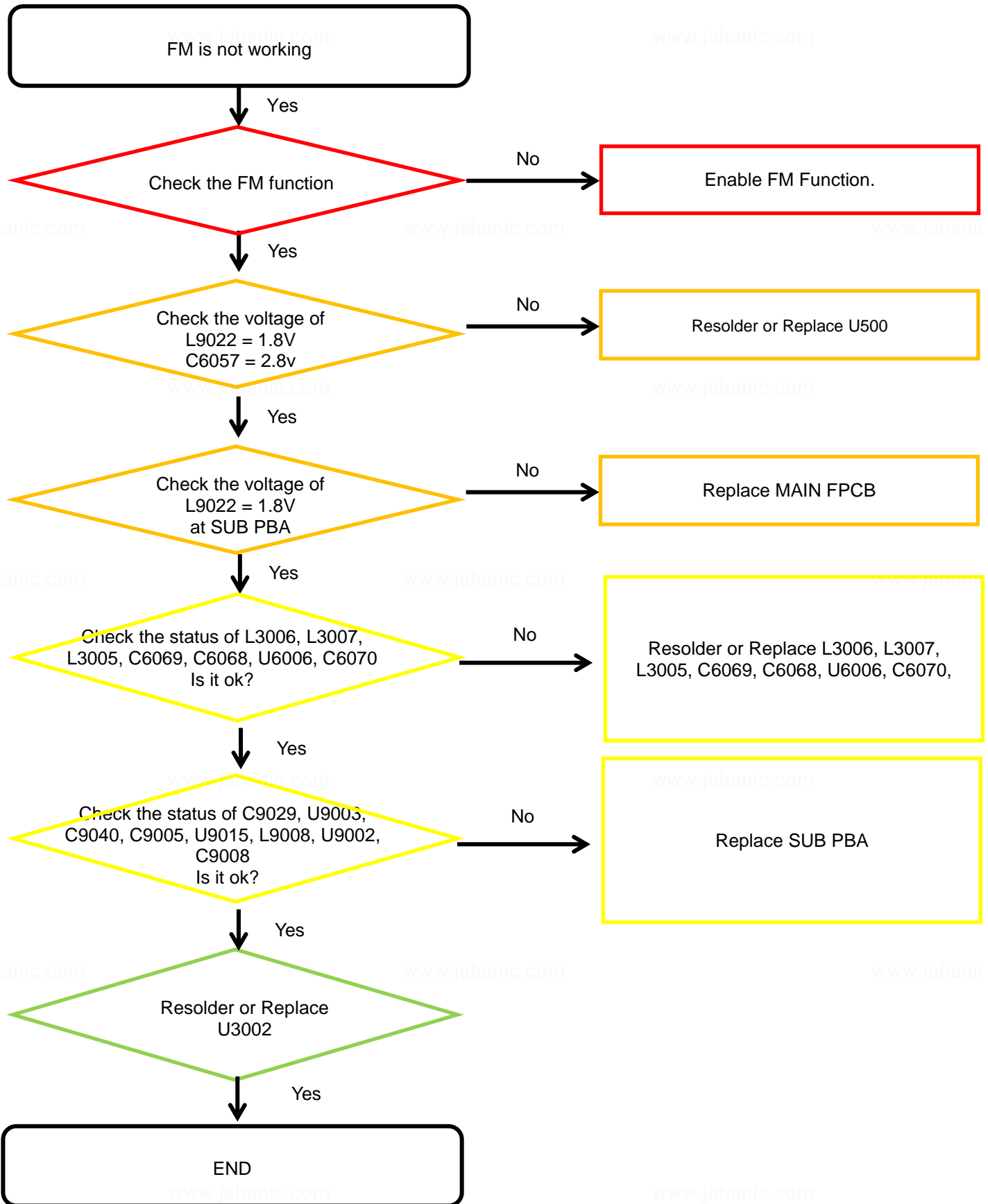
8. Level 3 Repair

8-3-14. NFC



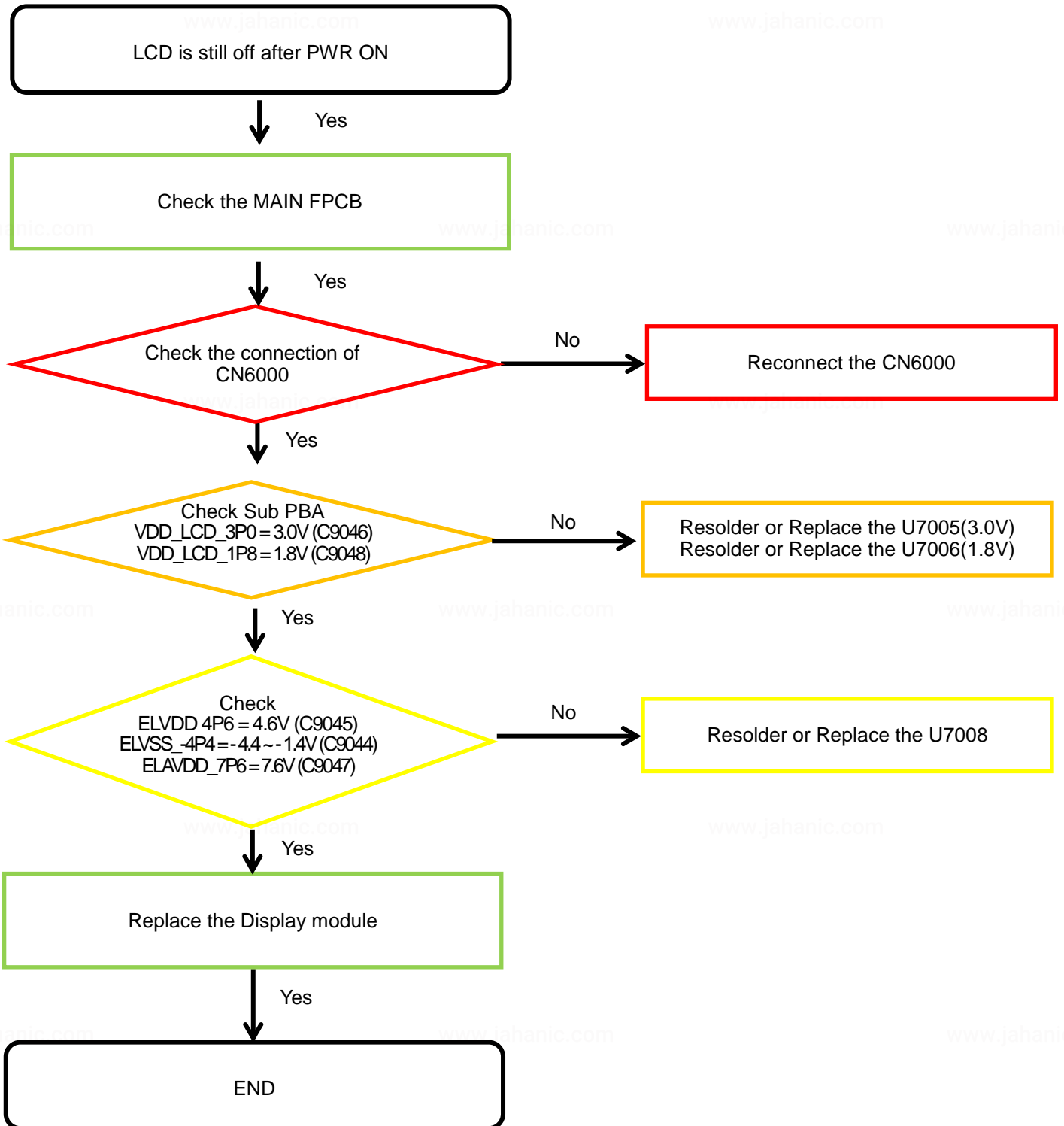
8. Level 3 Repair

8-3-15. FM radio part



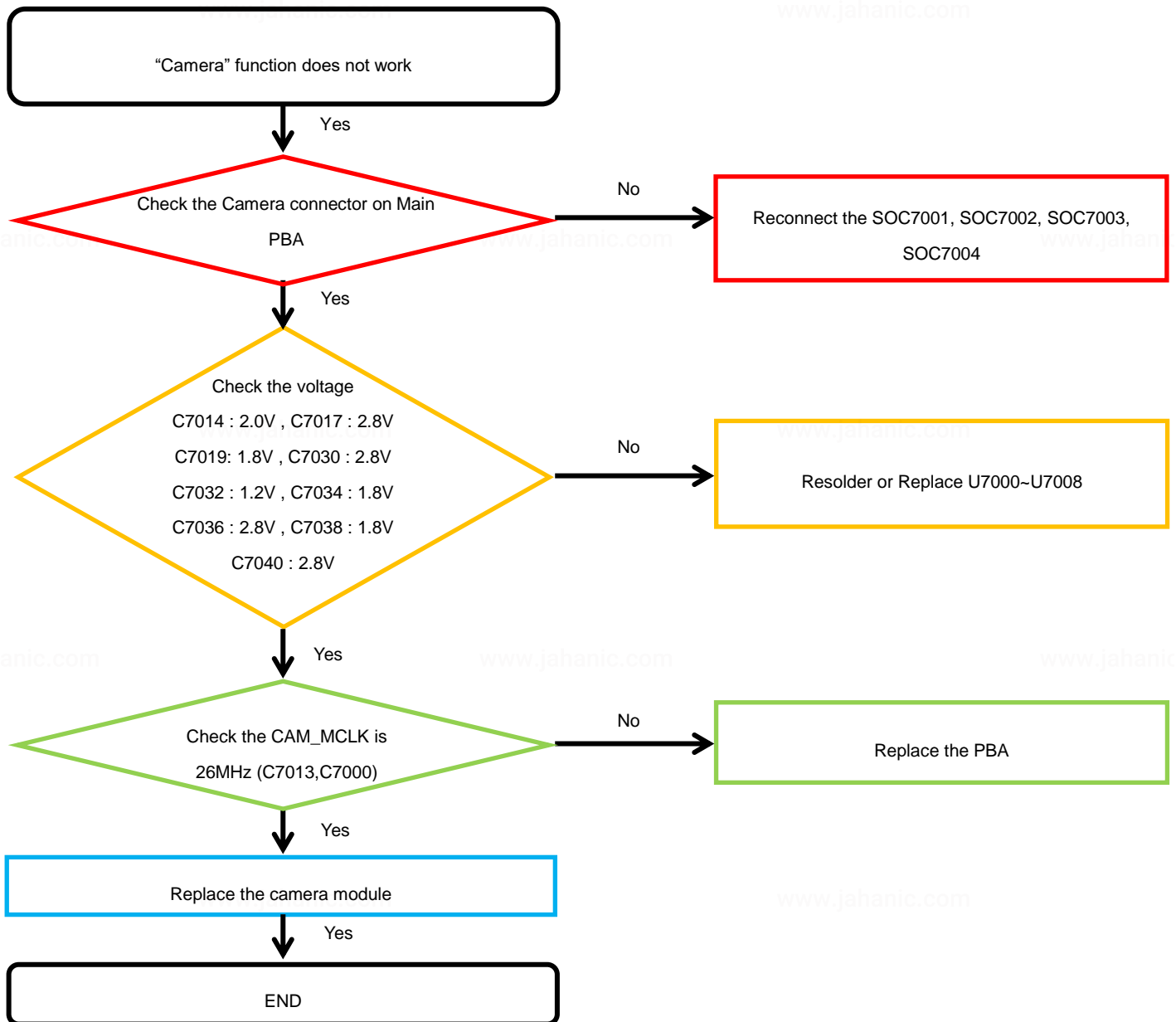
8. Level 3 Repair

8-3-16. Display



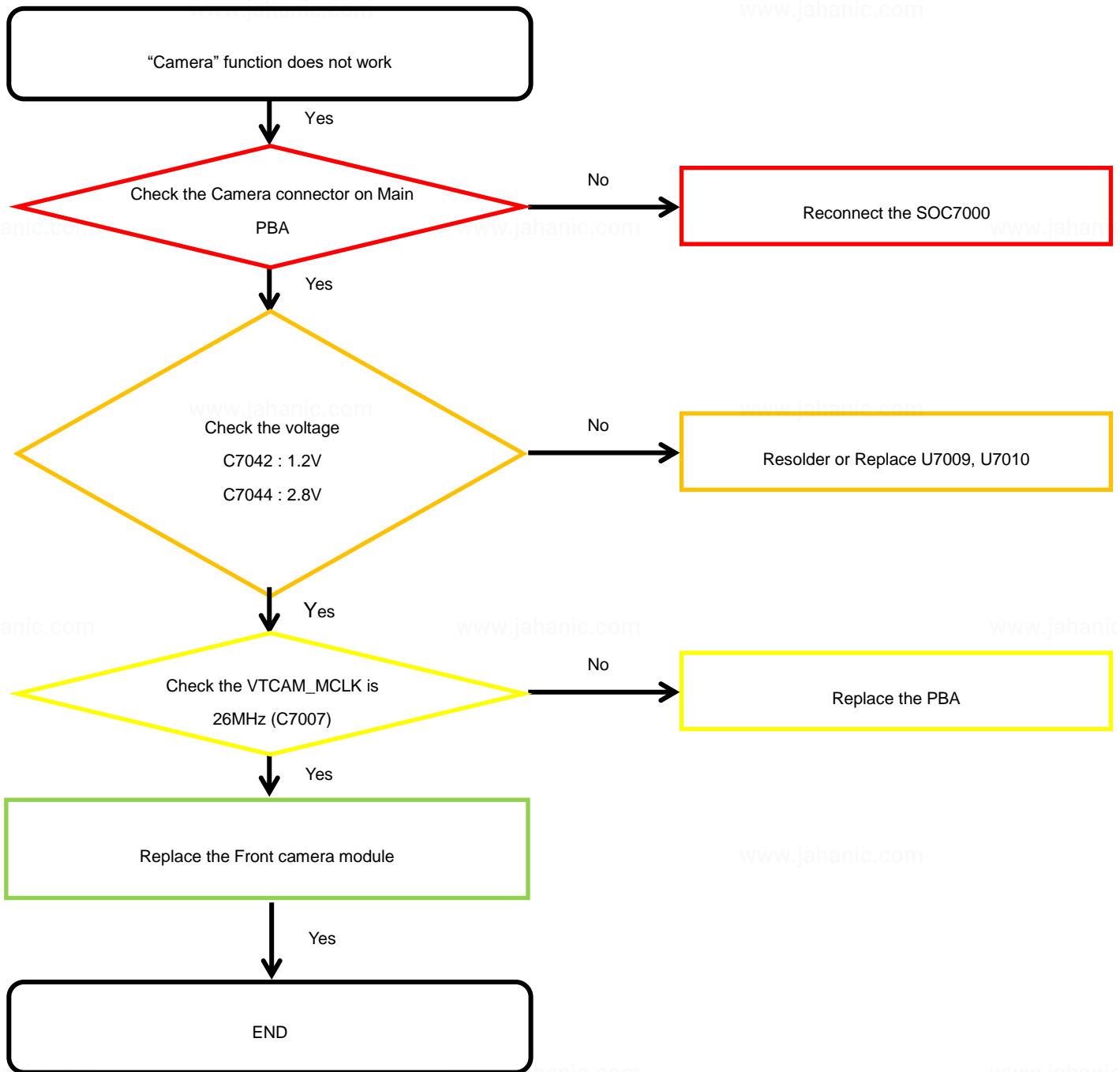
8. Level 3 Repair

8-3-17. Quad Camera



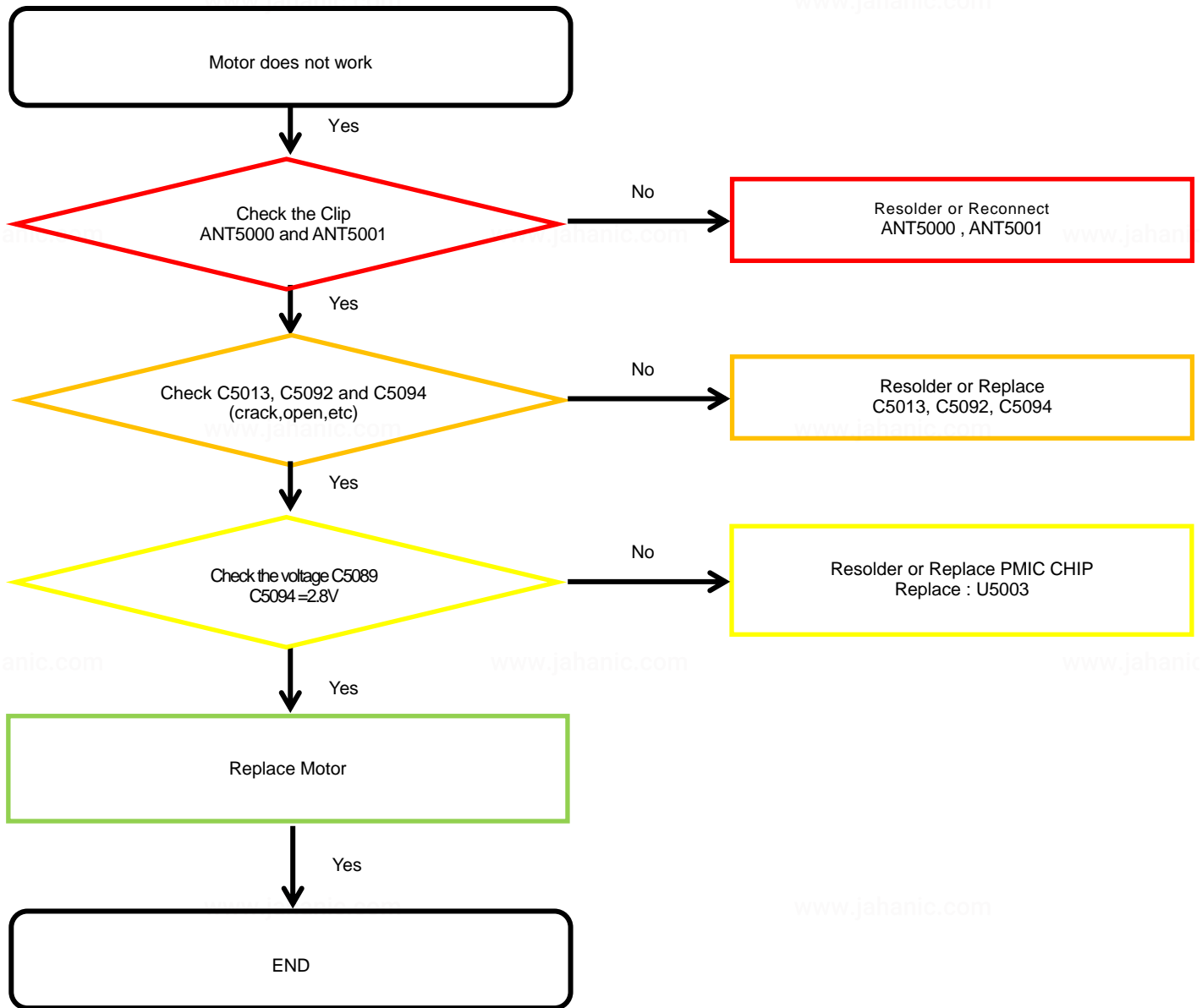
8. Level 3 Repair

8-3-18. VT CAMERA



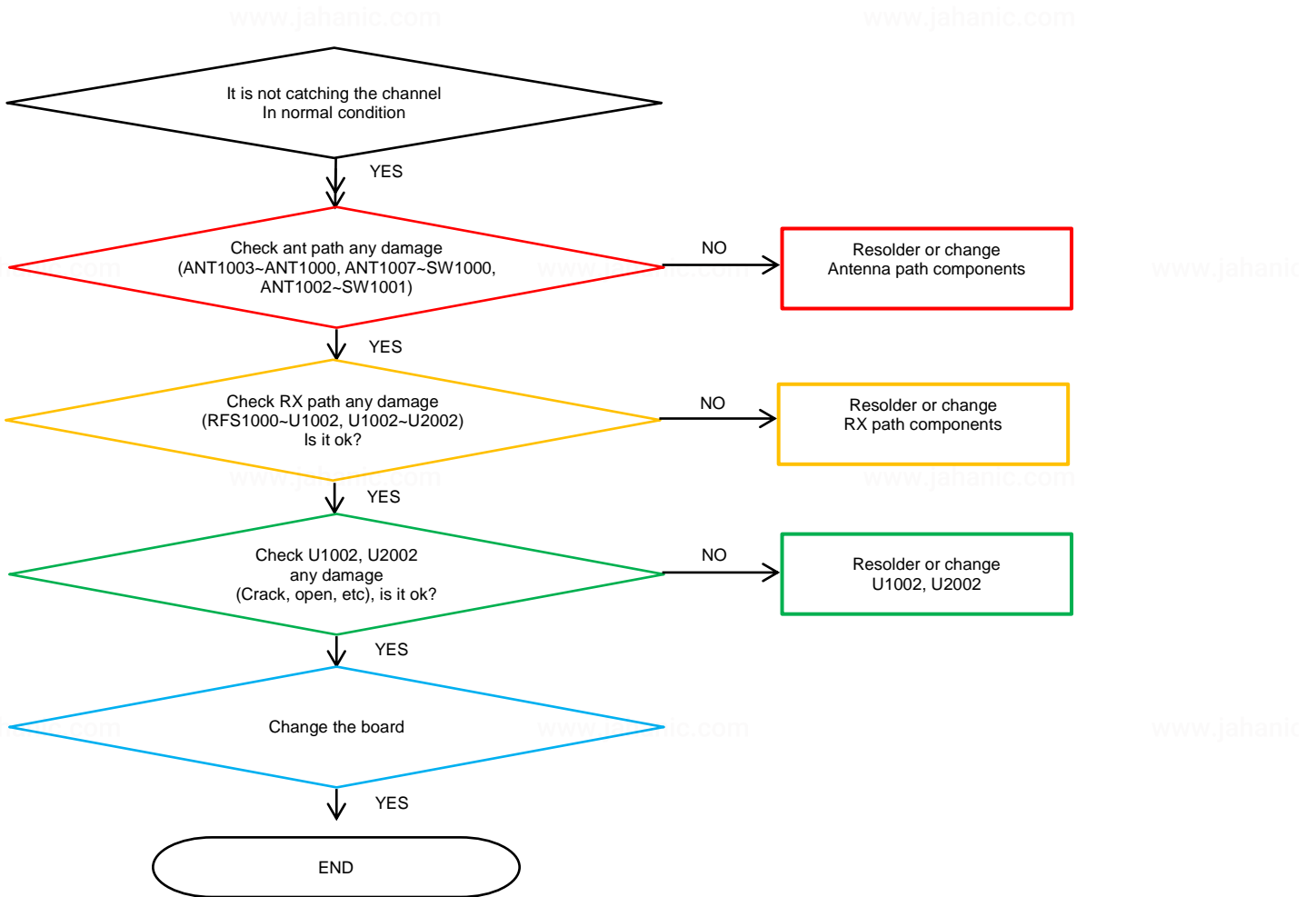
8. Level 3 Repair

8-3-19. Motor



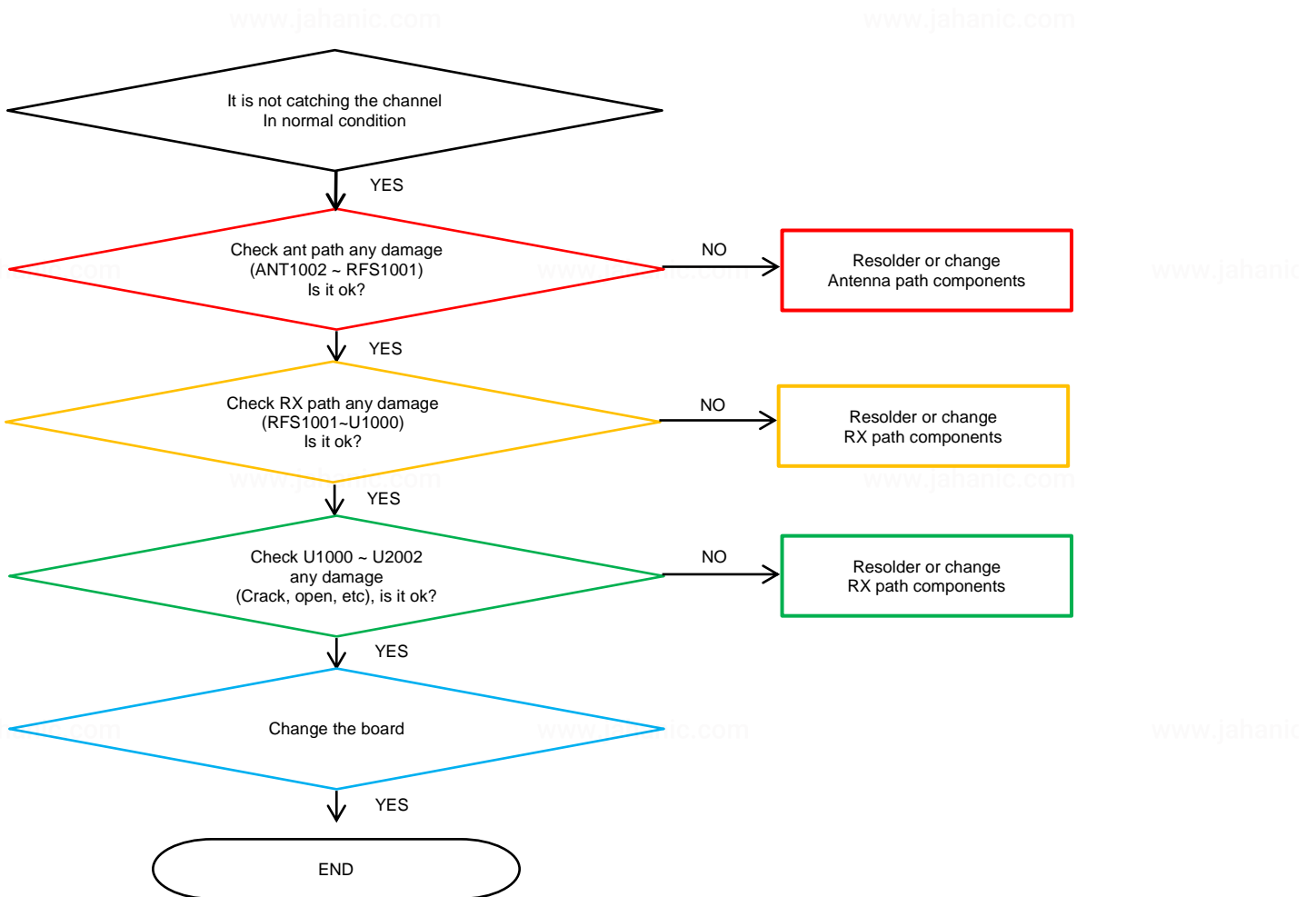
8. Level 3 Repair

8-3-20. GSM 850/900/1800/1900, WCDMA B1/2/4/5/8, LTE B1/2/3/4/5/8/12/13/17/20/26/28/66 PRx



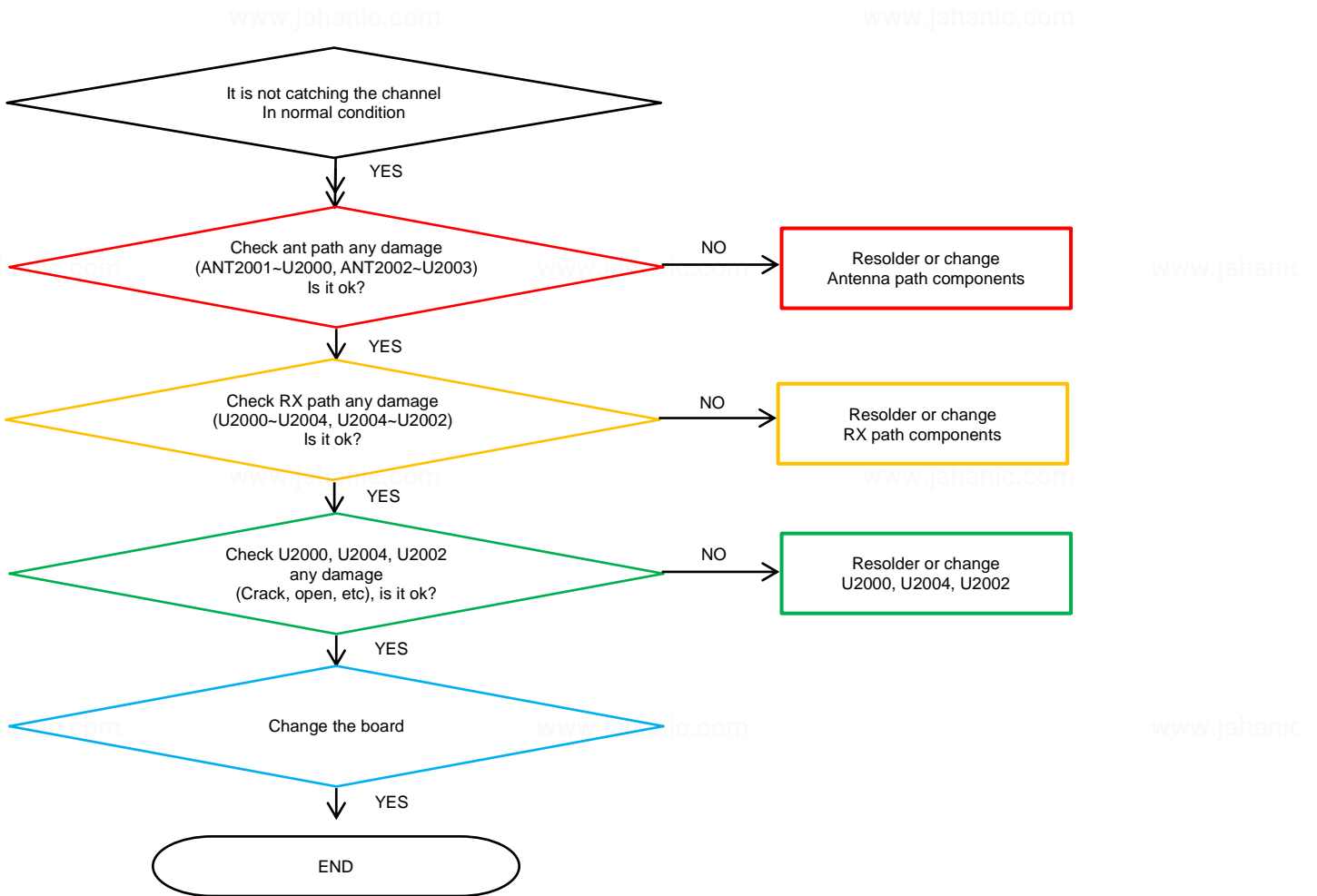
8. Level 3 Repair

8-3-21. LTE B7/38/40/41 PRx



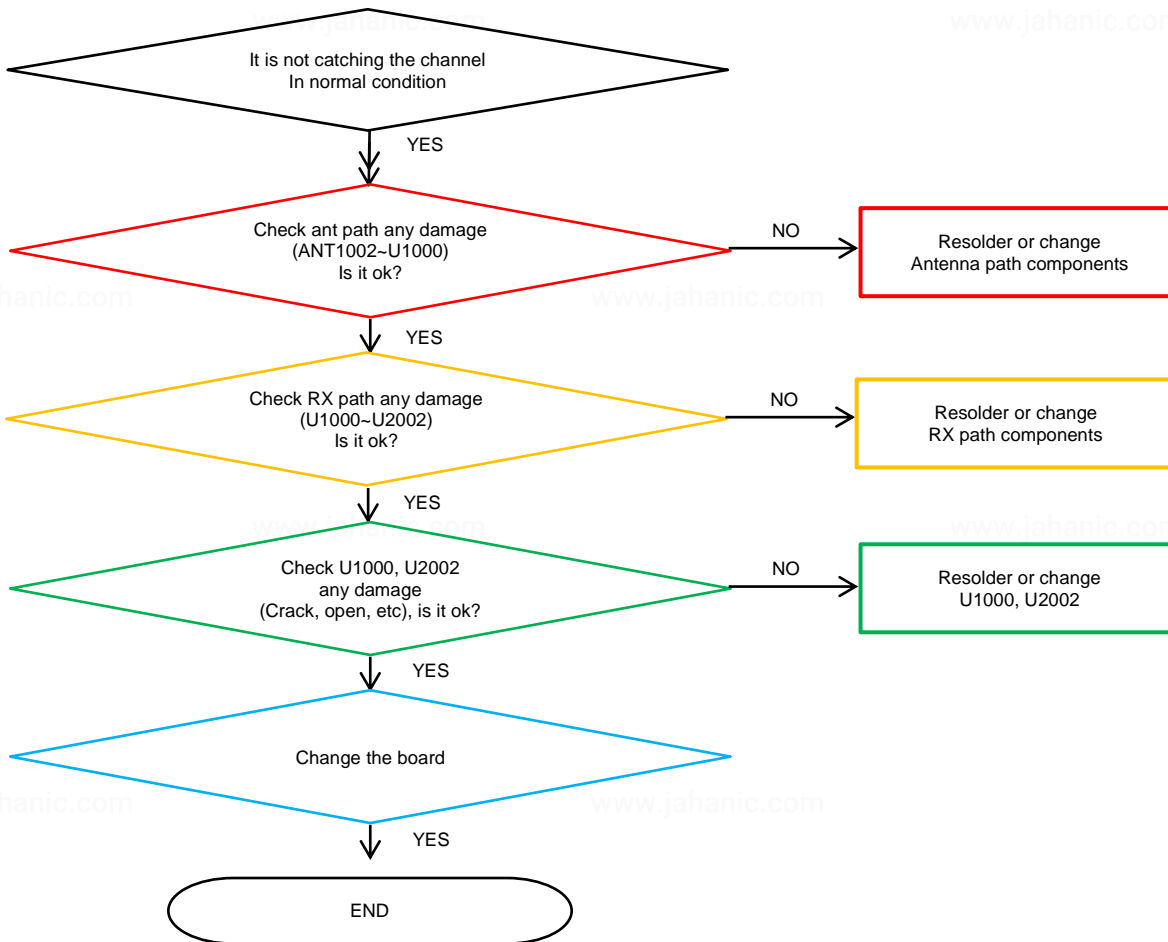
8. Level 3 Repair

8-3-22. GSM 850/900/1800/1900, WCDMA B1/2/4/5/8, LTE B1/2/3/4/5/8/12/13/17/20/26/28/66 DRx



8. Level 3 Repair

8-3-23. LTE B7/38/40/41 DRx



8. Level 3 Repair

8-3-24. GSM 850/900/1800/1900, WCDMA B1/2/4/5/8, LTE B1/2/3/4/5/8/12/13/17/20/26/28/66 Tx



8. Level 3 Repair

8-3-25. LTE B7/38/40/41 Tx

