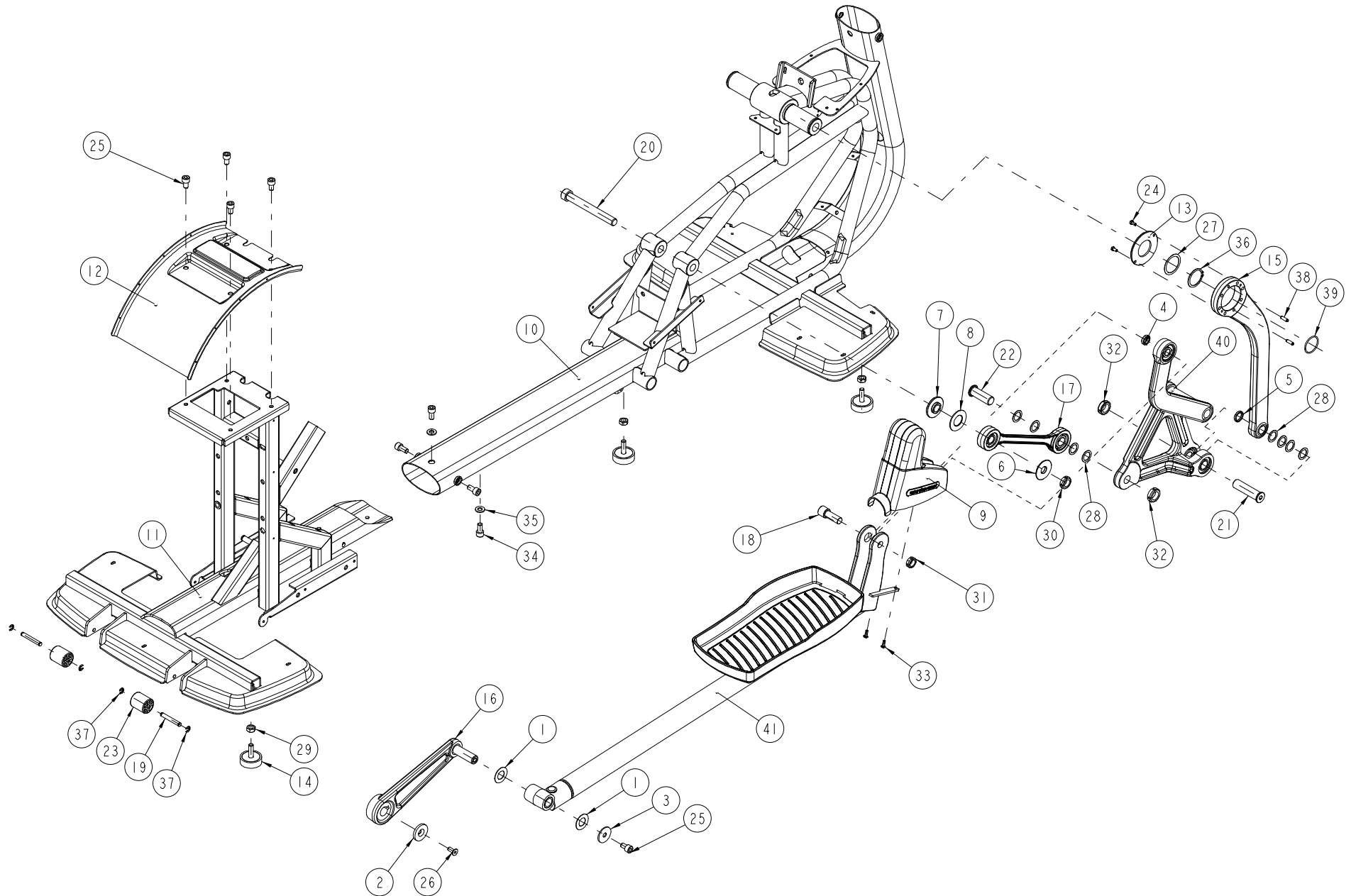


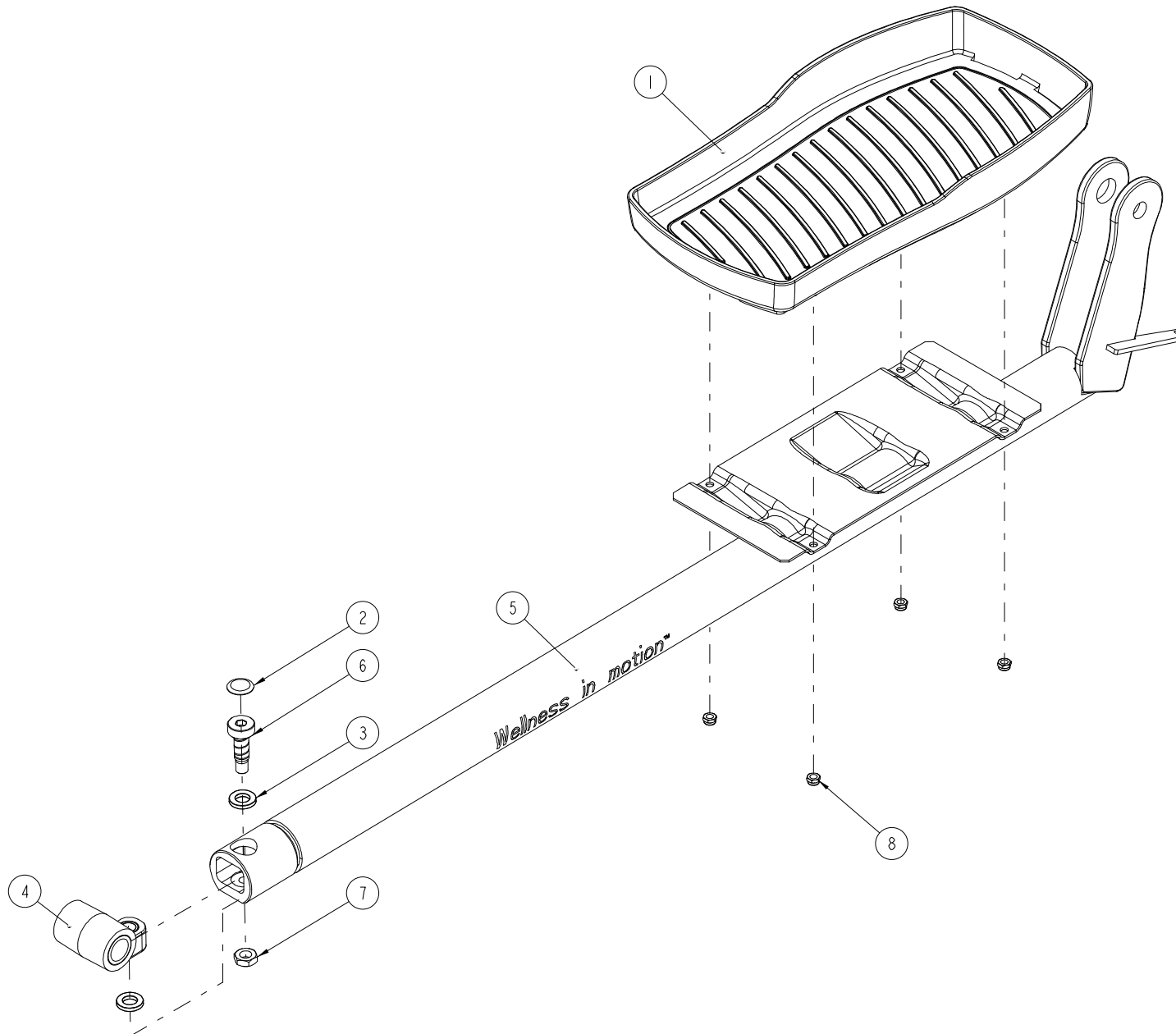
Rif. Ref.	Codice Code	Descrizione	Description	Q.tà Q.ty
1	0B000708AA	Distanziale	Spacer	2
3		Vedi pagina 6/12	See page 6/12	1
4	0C000584AA	TOUCH SENSOR inferiore	TOUCH SENSOR lower plate	2
5	0C000951AA	TOUCH SENSOR -	TOUCH SENSOR plate -	1
6	0C000952AA	TOUCH SENSOR +	TOUCH SENSOR plate +	1
7	W0003597AC	Grp schurter	Schurter socket assembly	1
8	0D001701AB	Piatto	Plate	1
9	0G000148-GG	Tappo	Plug	2
10	0G1341	Spugna	Sponge	2
11	0G000353AB	Tappo connettore pedana	Plug for base	1
12	0K000326AA	Distanziale	Spacer	4
13	0N000258AD-AL	Boccola completa	Complete bushing	2
14	0N000268AD-AL	Impugnatura laterale dx	Side right handle grip	1
15	0N000269AD-AL	Impugnatura laterale sx	Side left handle grip	1
17	0WF020	Fusibile - rapido	Fuse - fast acting	2
19	0WQ00241AD	Scheda Hand-Sensor	Hand-Sensor board	1
20	0WQ00261AC	Scheda TOUCH SENSOR	TOUCH SENSOR board	2
21	0WR00678AA	Ricevitore SALUTRON 4000	SALUTRON 4000 receiver	1
22	0WR00476AA	Distanziale schede	Boards clips	6
23	0WT005AA	Presca schurter	Schurter socket	1

Rif. Ref.	Codice Code	Descrizione	Description	Q.tà Q.ty
24	0Z175	Vite (VTCEI)	Bolt	2
25	0Z320	Rosetta dentata	Ext. notched washer	1
26	0Z328	Rosetta dentata	Ext. notched washer	2
28	0Z775	Vite autof. (VTBIC) nera	Black self-threading screw	7
30	0ZS00011AA	Spina elastica	Spiral pin	4
31	0ZV00060	Vite (VTCEI)	Bolt	12
32	0ZV00127	Vite autof. (VTBIC)	Self-threading screw	8
33	0ZV00004	Vite (VTCCIC)	Screw	4
34	0ZV00135	Vite (VTBEI)	Bolt	2
35	0ZV00223AA	Vite (VTCEI)	Bolt	8
36		Vedi pagina 7/12	See page 7/12	1
37		Vedi pagina 7/12	See page 7/12	1
38		Vedi pagina 2/12	See page 2/12	1
39		Vedi pagina 4/12	See page 4/12	1
40	R0004475AB	Scheda freno 65W	Brake Board	1
41	WTV 12	Vedi pagina 5/12	See page 5/12	1
42		Vedi pagina 9/12	See page 9/12	1



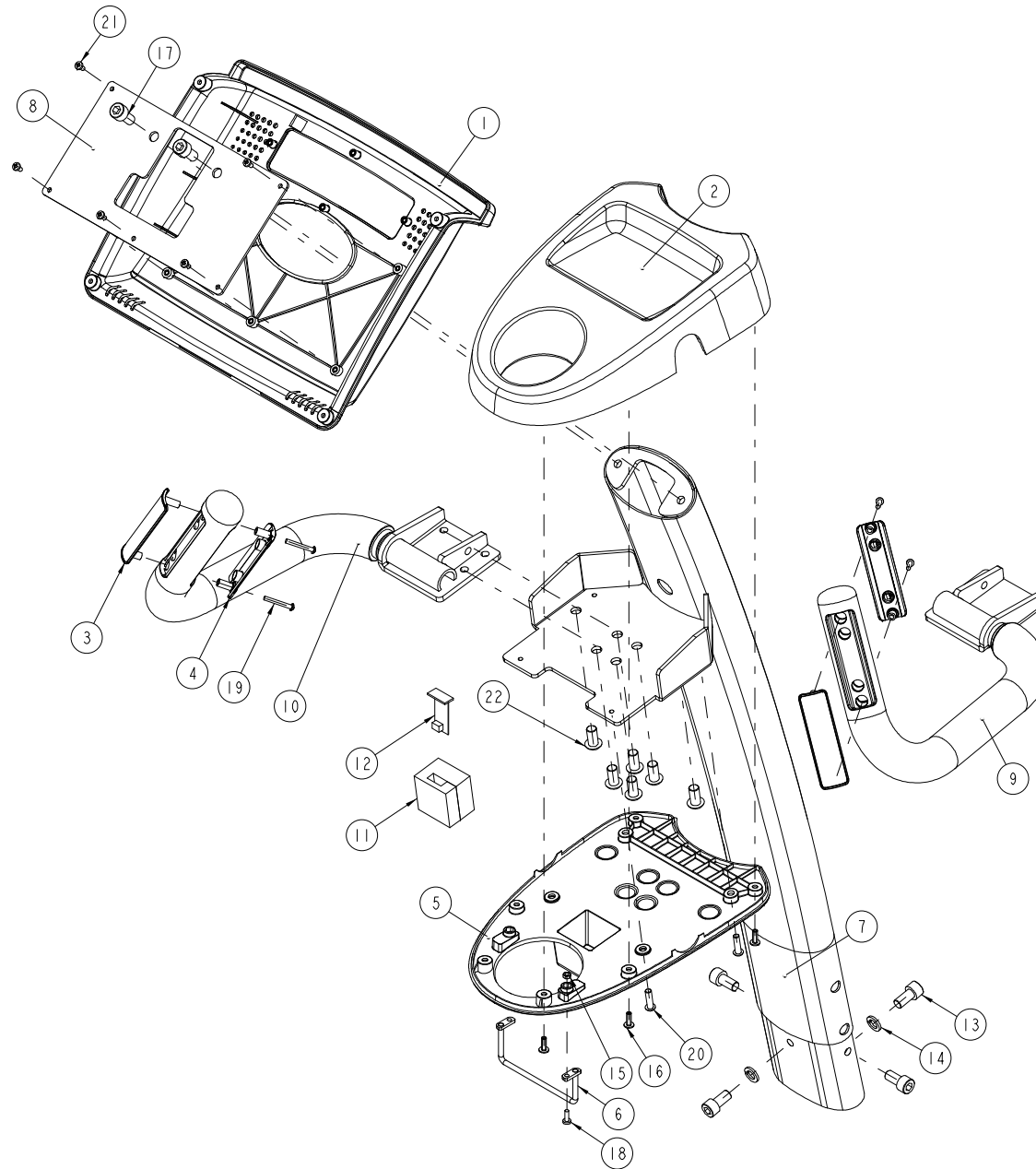
Rif. Ref.	Codice Code	Descrizione	Description	Q.tà Q.ty
1	0B000553AA	Distanziale	Spacer	4
2	0B000567AA	Rosetta svasata	Flared washer	2
3	0B000579AB	Rosetta	Washer	2
4	0B000621AC	Distanziale	Spacer	2
5	0B000623AA	Distanziale	Spacer	2
6	0B000631AA	Distanziale	Spacer	2
7	0B000675AB	Distanziale	Spacer	1
8	0B000810AA	Distanziale	Spacer	2
9	0C000607AA	Cuffiotto leve	Cover casing for lever	2
10	0D001359AD-AL	Telaio anteriore	Front frame	1
11	0D001375AA	Telaio posteriore	Rear frame	1
12	0D001423AA-AL	Lamiera carter	Plate for rear casing	1
13	0D001759AA	Distanziale	Spacer	2
14	0G000418AA	Piedino di registro	Adjusting foot/stop	5
15	0N000275AD	Leva anteriore dx	Right front lever	1
	0N000276AD	Leva anteriore sx	Left front lever	1
16	0N000292AA	Manovella	Rear crank	2
17	0N000348AA	Leva	Lever	2
18	0P000427AB	Perno	Pin	2
19	0P000433AA	Perno	Pin	2
20	0P000441AA	Perno	Pin	1
21	0P000470AA	Perno	Pin	2

Rif. Ref.	Codice Code	Descrizione	Description	Q.tà Q.ty
22	0P000480AA	Perno	Pin	2
23	0V255	Rullo trasferimento	Moving wheel	2
24	0Z075	Vite (VTE)	Bolt	4
25	0Z111	Vite (VTCEI)	Bolt	6
26	0Z254	Vite (VTSPEI) nera	Black bolt	2
27	0Z372	Anello di spessoramento	Shim ring	2
28	0Z375	Anello di spessoramento	Shim ring	16
29	0Z410	Dado	Nut	5
30	0Z413	Ghiera autobloccante	Self-locking ring nut	1
31	0Z453	Ghiera autobloccante	Self-locking ring nut	2
32	0Z458	Ghiera autobloccante	Self-locking ring nut	4
33	0Z775	Vite autof. (VTBIC) nera	Black self-threading screw	4
34	0Z1035	Vite (VTCEI)	Bolt	4
35	0Z3003	Rosetta	Washer	2
36	0Z543	Anello elastico per alberi	External circlip	2
37	0ZS00058	Anello elastico per alberi	External circlip	4
38	0ZS00011AA	Spina elastica	Spiral pin	4
39	0ZS00088AA	Anello elastico per fori	Internal circlip	2
40	W0001959AA-GG	Leva triangolare dx	Right triangular lever	1
	W0001960AA-GG	Leva triangolare sx	Left triangular lever	2
41		Vedi pagina 3/12	See page 3/12	1



Rif. Ref.	Codice Code	Descrizione	Description	Q.tà Q.ty
1	R0006603AA-GG	Pedali SYNCHRO EXCITE	SYNCHRO EXCITE pedals	1
2	0G000285	Tappo	Plug	1
3	0G000455AB	Rosetta	Washer	2
4	0N000314AB	Snodo	Joint	1
5	0N000321AD-GG	Leva pedali dx	Right pedal lever	1
	0N000235AE-GG	Leva pedali sx	Left pedal lever	1

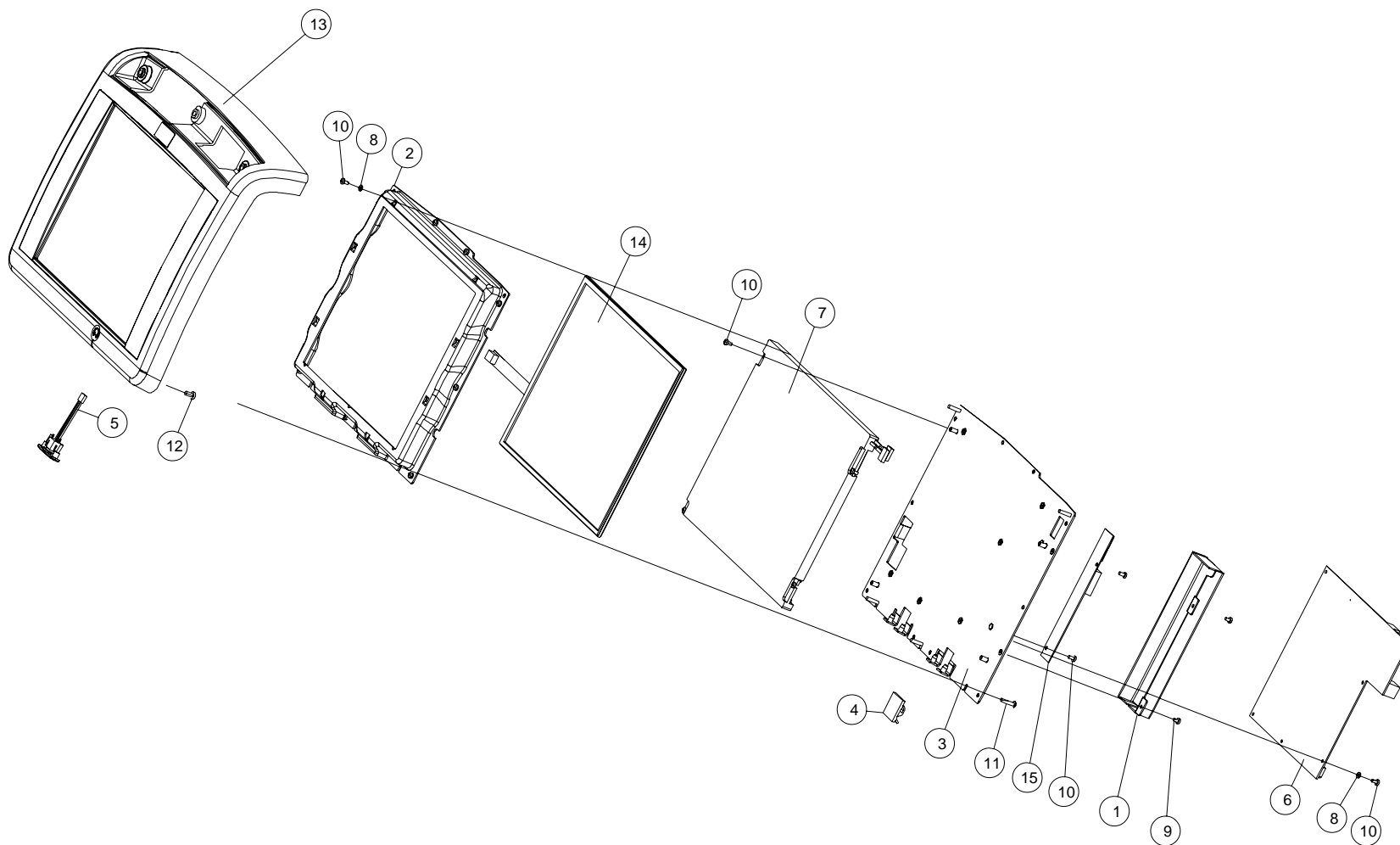
Rif. Ref.	Codice Code	Descrizione	Description	Q.tà Q.ty
6	0P000483AC	Perno	Pin	1
7	0Z419	Dado	Nut	1
8	0Z436	Dado autobloccante	Self-locking nut	4



Rif. Ref.	Codice Code	Descrizione	Description	Q.tà Q.ty
1	0C000532AA	Guscio inferiore display	Rear covering for display	1
2	0C000578AA	Portaborraccia	Water bottle support	1
3	0C000580AA-GG	HS superiore	Hand sensor upper plate	2
4	0C000581AA-GG	HS inferiore	Hand sensor lower plate	2
5	0C000586AA	Supporto portaborraccia	Water bottle lower support	1
6	0D001312AC-GG	Gancio portaborraccia	Water bottle support	1
7	0D001376AA-AL	Montante	Upright frame	1
8	0D001839AB	Lamiera sup. guscio inf.	Rear covering support	1
9	0D001445AA	Impugnatura dx	Right handle grip	1
10	0D001446AA	Impugnatura sx	Left handle grip	1
11	0G001036AA	Spugna	Sponge	1

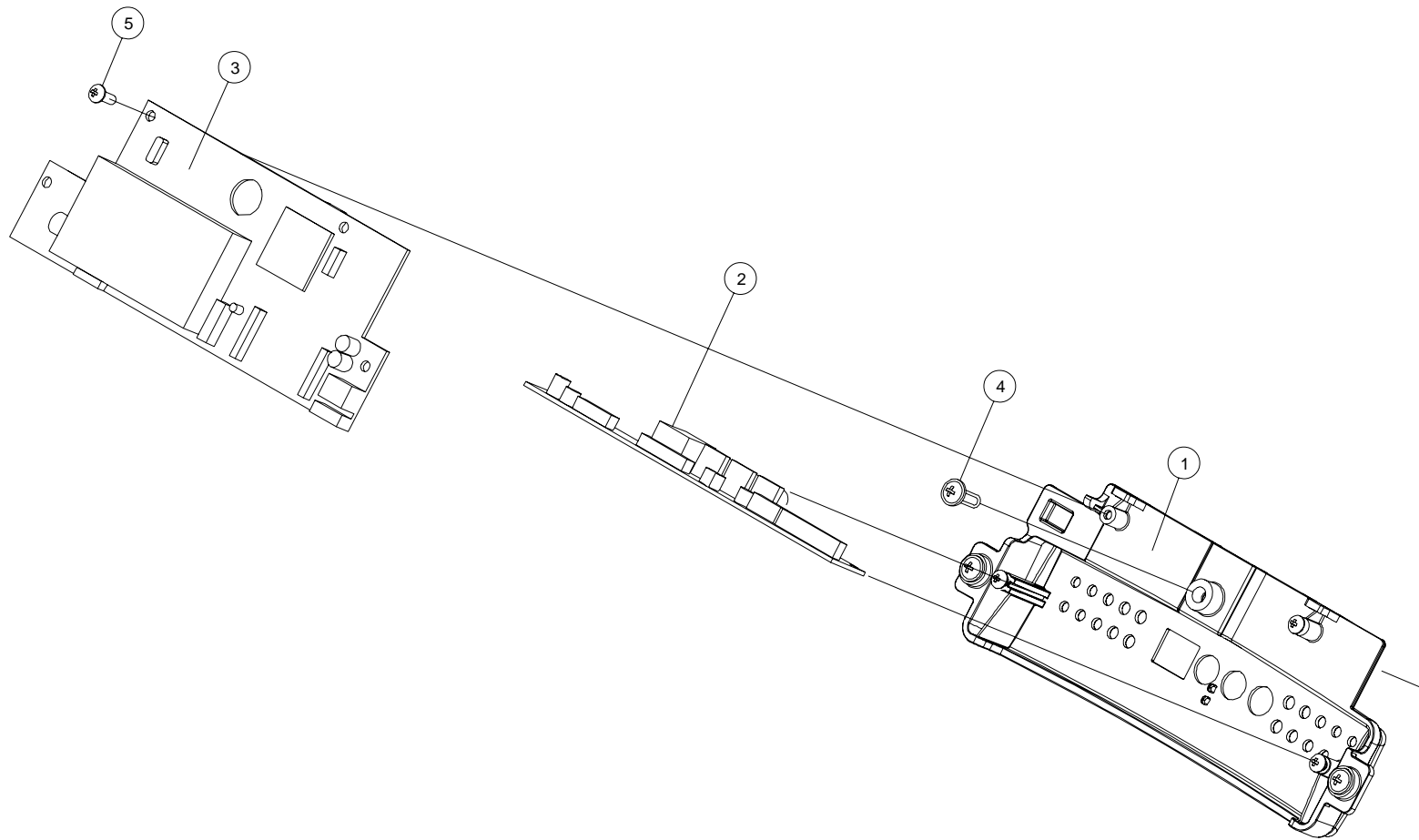
Rif. Ref.	Codice Code	Descrizione	Description	Q.tà Q.ty
12	0WR00285	Ricevitore POLAR HFU	POLAR HFU receiver	1
13	0Z112	Vite (VTCEI)	Bolt	4
14	0Z323	Rosetta elastica	Locking washer	2
15	0Z424	Dado	Nut	2
16	0Z775	Vite autof. (VTBIC) nera	Black self-threading screw	6
17	0Z1035	Vite (VTCEI)	Bolt	2
18	0Z733	Vite (VTCCIC)	Screw	2
19	0ZV00127	Vite autof. (VTBIC)	Self-threading screw	4
20	0ZV00135	Vite (VTBEI)	Bolt	4
21	0ZV00152AA	Vite (VTCCIC)	Screw	5
22	0ZV00169AA	Vite (VTBEI)	Bolt	6





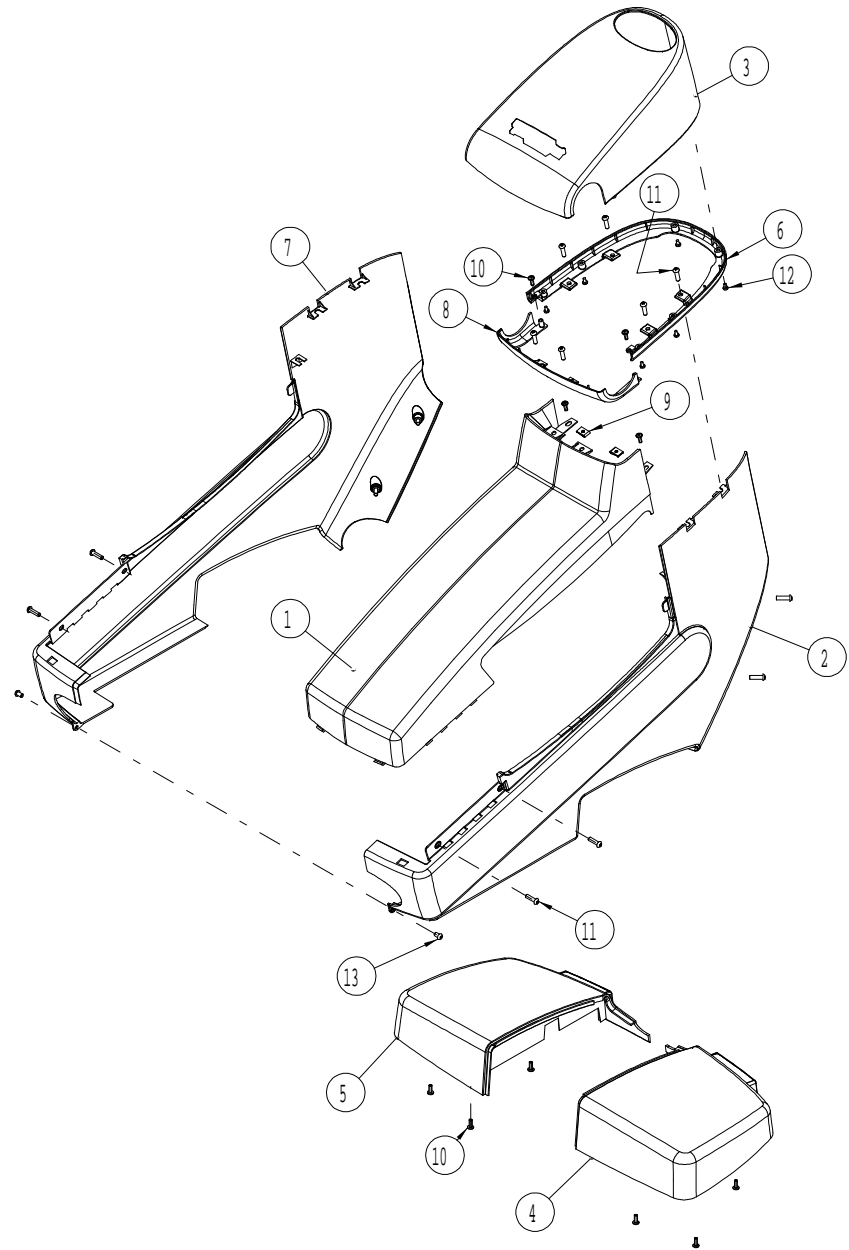
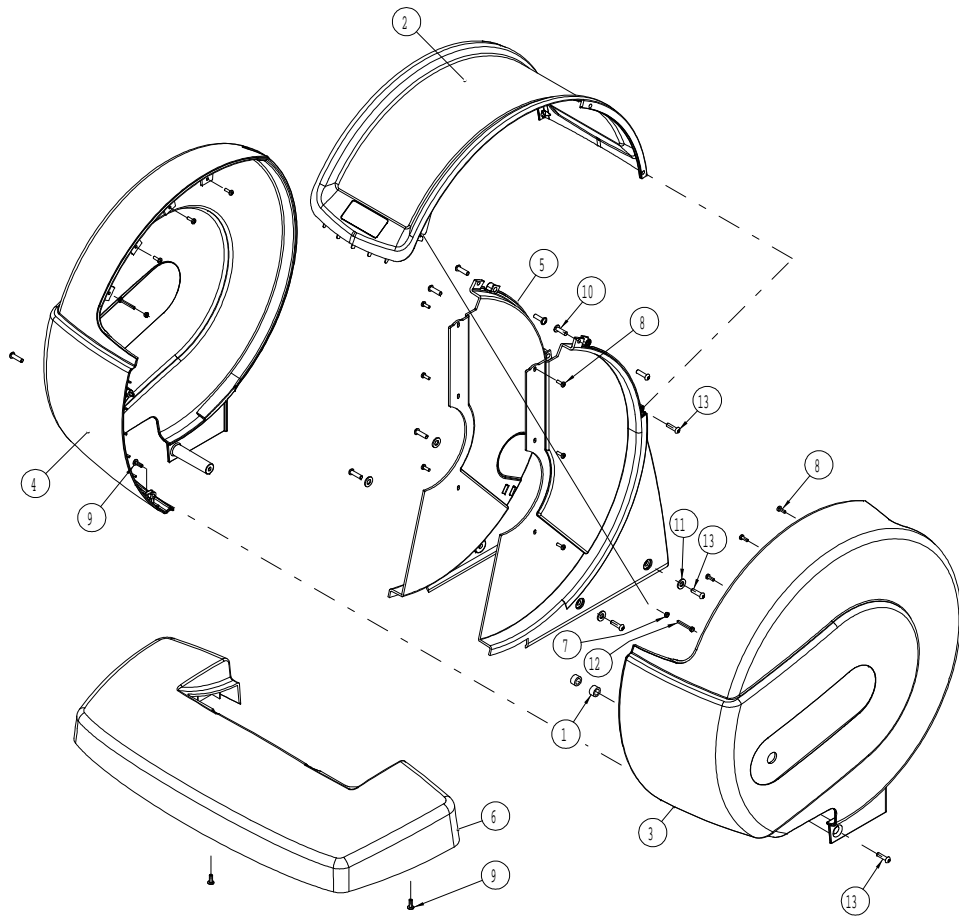
Pos	Codice	Descrizione	Specifiche Tecniche	C	N	Q.tà
1	0D001706AA	LAMIERA INVERTER LCD		0		1
2	0D002440AA	PROTEZIONE LCD		0		1
3	0D002454AB	SOSTEGNO ELETTRONICA		0		1
4	0WB00023	CLIP ADESIVA		0		1
5	R0006599AA	CONNETTORE CUFFIA		0		1
6	0WQ00387AA	SCHEDA CPU 12 (NO TUNER)		0	at	1
7	0WR00646AA	DISPLAY SHARP LCD LVDS 12		0		1
8	0Z349	ROSETTA DENTATA	3.2x6x1.2 Z UNI8842A	0		16
9	0Z781	VITE (VTCCIC)	M3x5 ISO7045	0		2
10	0ZV00004	VITE (VTCCIC)	M3x6 ISO7045	0		22
11	0ZV00090	VITE AUTOF. (VTBIC)	3.5x16 ISO7049	0		5
12	0ZV00152AA	VITE (VTCCIC)	M4x8 ISO7045	0		4
13	W0003222AD	DISPLAY ANT. WTV 12		0		1
14	0WT00083AA	TOUCH SCREEN 12		0		1
15	R0005602AA	KIT INVERTER 12 FRONTEK 1SCHEDA		0		1

at WARNING - NOTA						
For machines ISDB-T, you have to use the board with Tuner: Per macchine ISDB-T, si deve usare la scheda con il Tuner:						
6	0WQ00342AB-U	CPU board for WTV 12"	Scheda CPU 12" UB			1



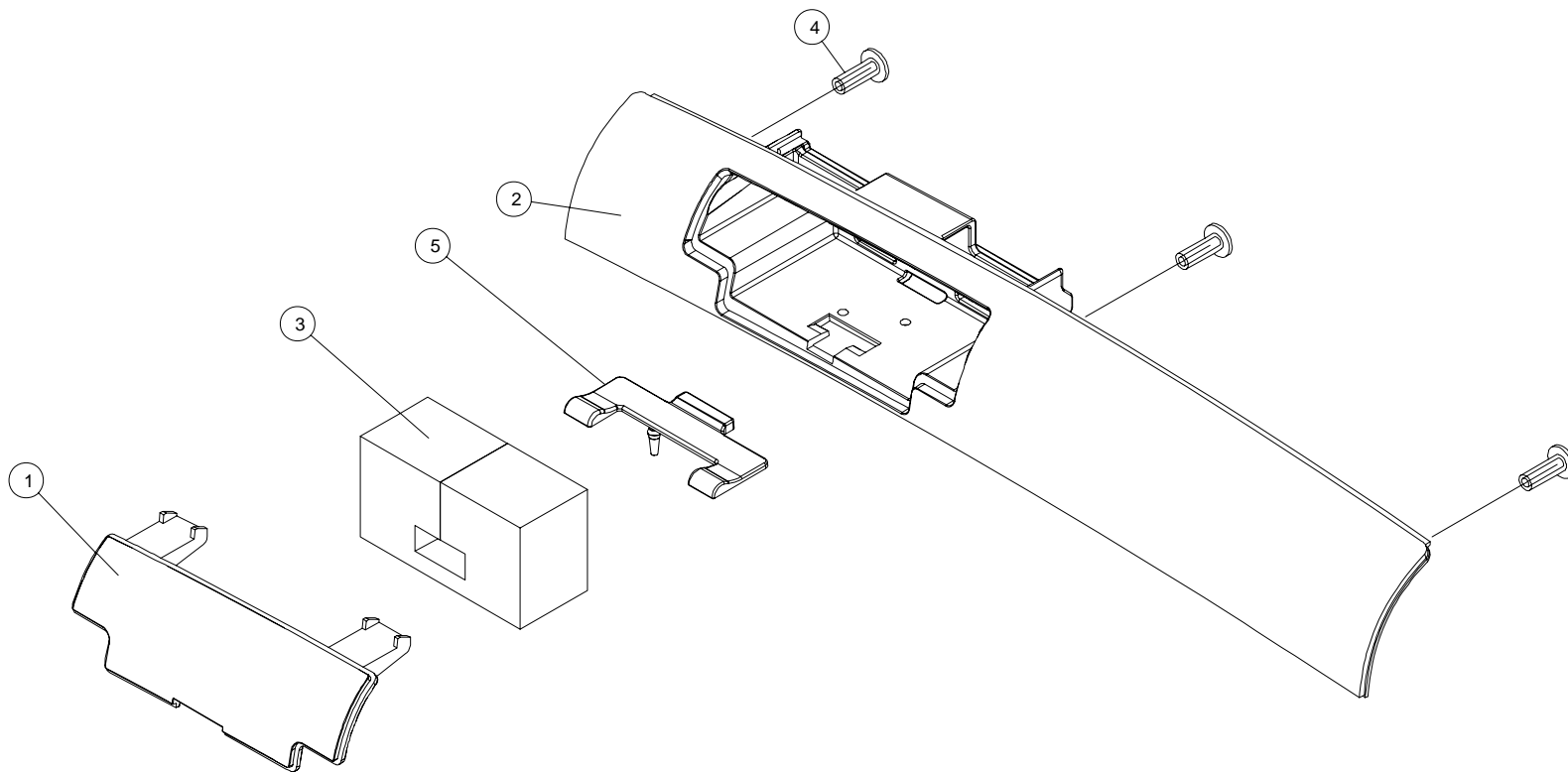
Pos	Codice	Descrizione	Specifiche Tecniche	C	N	Q.tà
1	0C001512AB-(E)	TAPPO SCHEDA CONNETTORI		0		1
2	0WQ00370AA	SCHEDA CONNETTORI		0		1
3	0WQ00372AA	SCHEDA DIGITAL TV DVB-T		0		1
3	0WQ00374AD	SCHEDA DIGITAL TV ISDB-T		0		1
3	0WQ00373AD	SCHEDA DIGITAL TV ATSC		0		1
4	0Z775	VITE AUTOF. (VTBIC) NERA	3.5X10 ISO7049	0		3
5	0ZV00258AA	VITE AUTOF. (VTBIC)	3.5x10	0		4

£	GG	Grey - Grigio	RAL 7024
---	----	---------------	----------



Rif. Ref.	Codice Code	Descrizione	Description	Q.tà Q.ty
1	0B000530AA	Distanziale	Spacer	2
2	0C000542AB	Copertura per carter posteriore	Cover for rear casing	1
3	0C000543AB-G	Carter posteriore dx	Rear right casing	1
4	0C000544AB-G	Carter posteriore sx	Rear left casing	1
5	0C000620AC	Carter centrale	Central casing	1
6	0D001432AC-GG	Pedana posteriore	Rear footboard	1
7	0Z424	Dado	Nut	2
8	0Z733	Vite (VTCCIC)	Screw	12
9	0Z775	Vite autof. (VTBIC) nera	Black self-threading screw	5
10	0Z000151AA	Vite autof. (VTBIC)	Self-threading screw	2
11	0ZR00015	Rosetta	Washer	4
12	0ZV00123	Vite (VTE)	Bolt	2
13	0ZV00135	Vite (VTBEI)	Bolt	10

Rif. Ref.	Codice Code	Descrizione	Description	Q.tà Q.ty
1	0C000553AB-G	Carter superiore	Upper casing	1
2	0C000554AB-G	Carter anteriore dx	Front right casing	1
3	0C000555AA	Cuffiotto	Cover casing	1
4	0C000556AB-GG	Pedana anteriore dx	Front right footboard	1
5	0C000557AB-GG	Pedana anteriore sx	Front left footboard	1
6	0C000558AA	Carter	Casing	1
7	0C000559AB-G	Carter anteriore sx	Front left casing	1
8	0C000566AB-GG	Carter	Casing	1
9	0Z731	Piastrina vite autof.	Threaded plate	2
10	0Z775	Vite autof. (VTBIC) nera	Black self-threading screw	10
11	0ZV00135	Vite (VTBEI)	Bolt	14
12	0ZV00152AA	Vite (VTCCIC)	Screw	6
13	0ZV00181AA	Vite (VTBEI)	Bolt	2

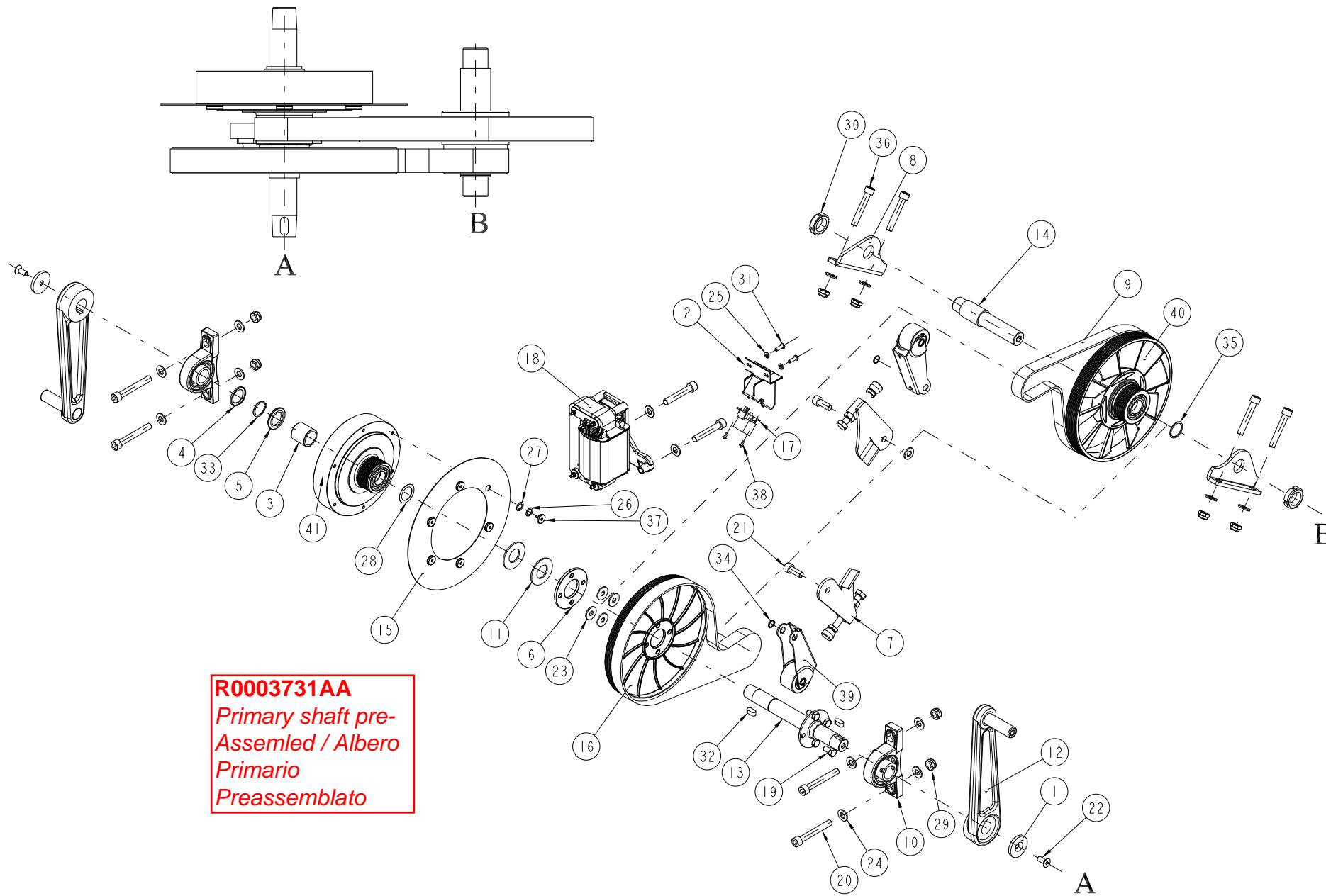


Pos	Codice	Descrizione	Specifiche Tecniche	C	N	Q.tà
1	0C001502AA-(E)	TAPPO		0		1
2	0C001509AB-(E)	TAPPO ACCESSORI DISPLAY		0	ao	1
3	0G001213AA	SPUGNA		0		1
4	0Z775	VITE AUTOF. (VTBIC) NERA	3.5X10 ISO7049	0		3
5	W0005882AA	APPOGGIO		0		1

£	GG	Grey - Grigio	RAL 7024
---	----	---------------	----------

WARNING - NOTA						
ao	For machines up to July 2007, you have to use the codes: Per macchine fino a Luglio 2007, si devono usare i codici:					
2	0C000533AA	Plug for display	Tappo accessori display			1

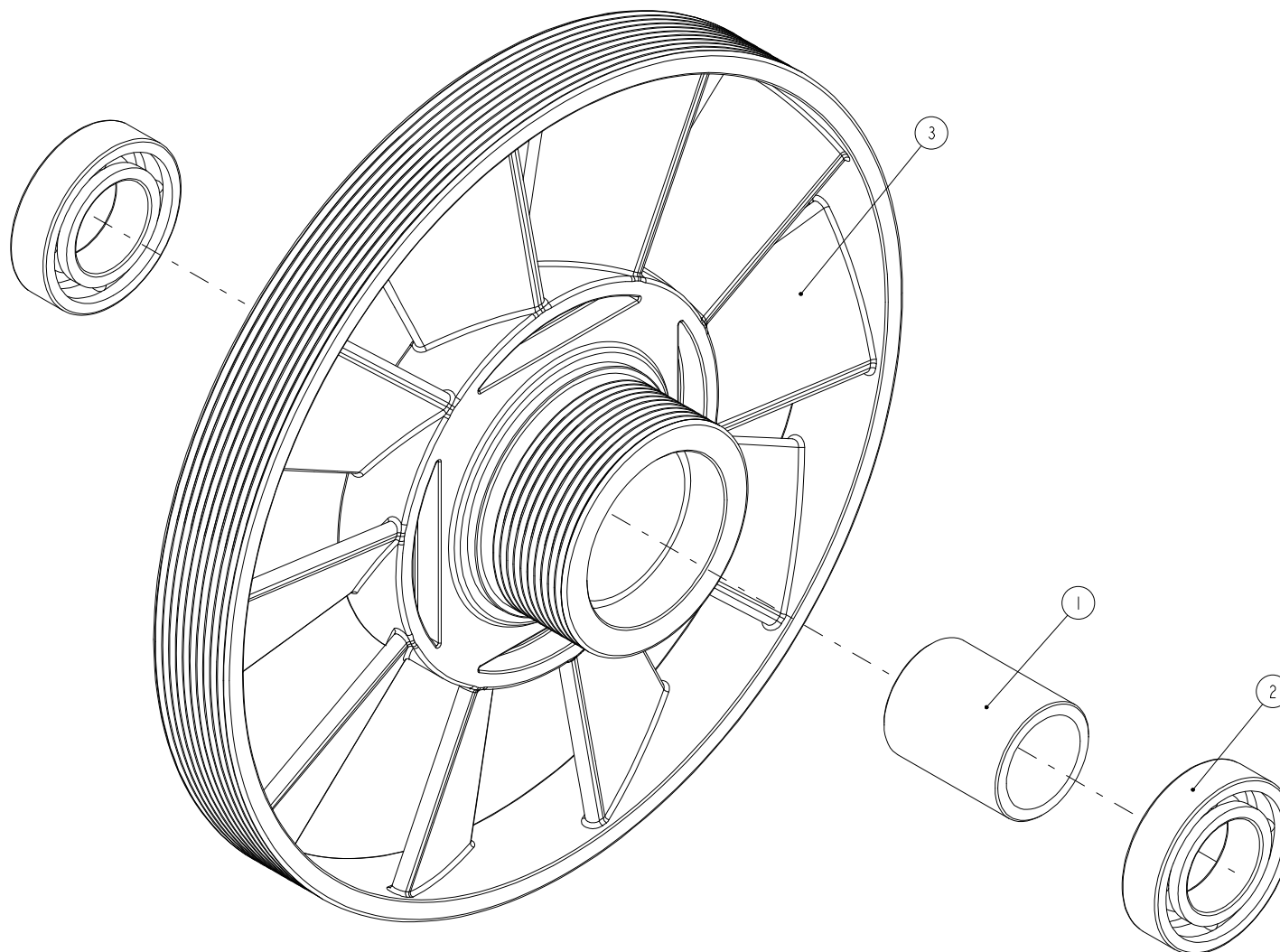




Rif. Ref.	Codice Code	Descrizione	Description	Q.tà Q.ty
1	0B000567AA	Rosetta svasata	Flared washer	2
2	0B000606AA	Supporto	Support	2
3	0B000999AA	Boccola	Bushing	1
4*	0B001000AB	Distanziale	Spacer	1
5	0B001001AB	Flangia	Flange	1
6	0B001002AA	Flangia	Flange	1
7	W0003658AC	Spintore	Pusher	2
8	0D001712AA	Lamiera	Plate	2
9	0K000264AA	Cinghia	Belt	2
10	0K402	Cuscinetto con supporto	Pillow block bearing	2
11	0M000190AA	Molla a tazza	Flat spring	2
12	0N000292AA	Manovella	Rear cranck	2
13	R0005605AA	Kit albero primario	Primary shaft assembly	1
14	0P000498AA	Albero secondario	Secondary shaft	1
15	0U000164AA	Disco rame	Copper disk	1
16	0U000211AA	Puleggia	Pulley	1
17	0WR00244	Sensore velocità	Speed sensor	1
18	0WR00496AA	Elettromagnete	Solenoid assembly	1
19	0Z056	Vite (VTE)	Bolt	4
20	0Z108	Vite (VTCEI)	Bolt	4
21	0Z125	Vite (VTCEI)	Bolt	2
22	0Z254	Vite (VTSPEI) nera	Black bolt	2
23	0Z305	Rosetta	Washer	4
24	0Z306	Rosetta	Washer	15

Rif. Ref.	Codice Code	Descrizione	Description	Q.tà Q.ty
25	0Z328	Rosetta dentata	Ext. notched washer	2
26	0Z350	Rosetta ondulata	Locking washer	6
27	0Z396	Anello di spessoramento	Shim ring	6
28	0Z399	Anello di spessoramento	Shim ring	1
29	0Z415	Dado autobloccante	Self-locking nut	8
30	0Z452	Ghiera autobloccante	Self-locking ring nut	2
31	0Z718	Vite (VTBEI) nera	Black bolt	2
32	0Z740	Linguetta	Fixed key	2
33	0Z540	Anello elastico per alberi	External circlip	1
34	0Z584	Anello elastico per alberi	External circlip	2
35	0Z399	Anello di spessoramento	Shim ring	3
36	0ZV00107	Vite (VTCEI)	Bolt	6
37	0ZV00134AA	Vite fissaggio disco rame	Copper disk fixing screw	6
38	0ZV00136AA	Vite autof. (VTBIC)	Self-threading screw	2
39	H0002255AB	Tendicinghia	Belt tensioner	2
40	H0002585AA	Puleggia	Pulley	1
41	R0002584AA	Volano	Flywheel	1

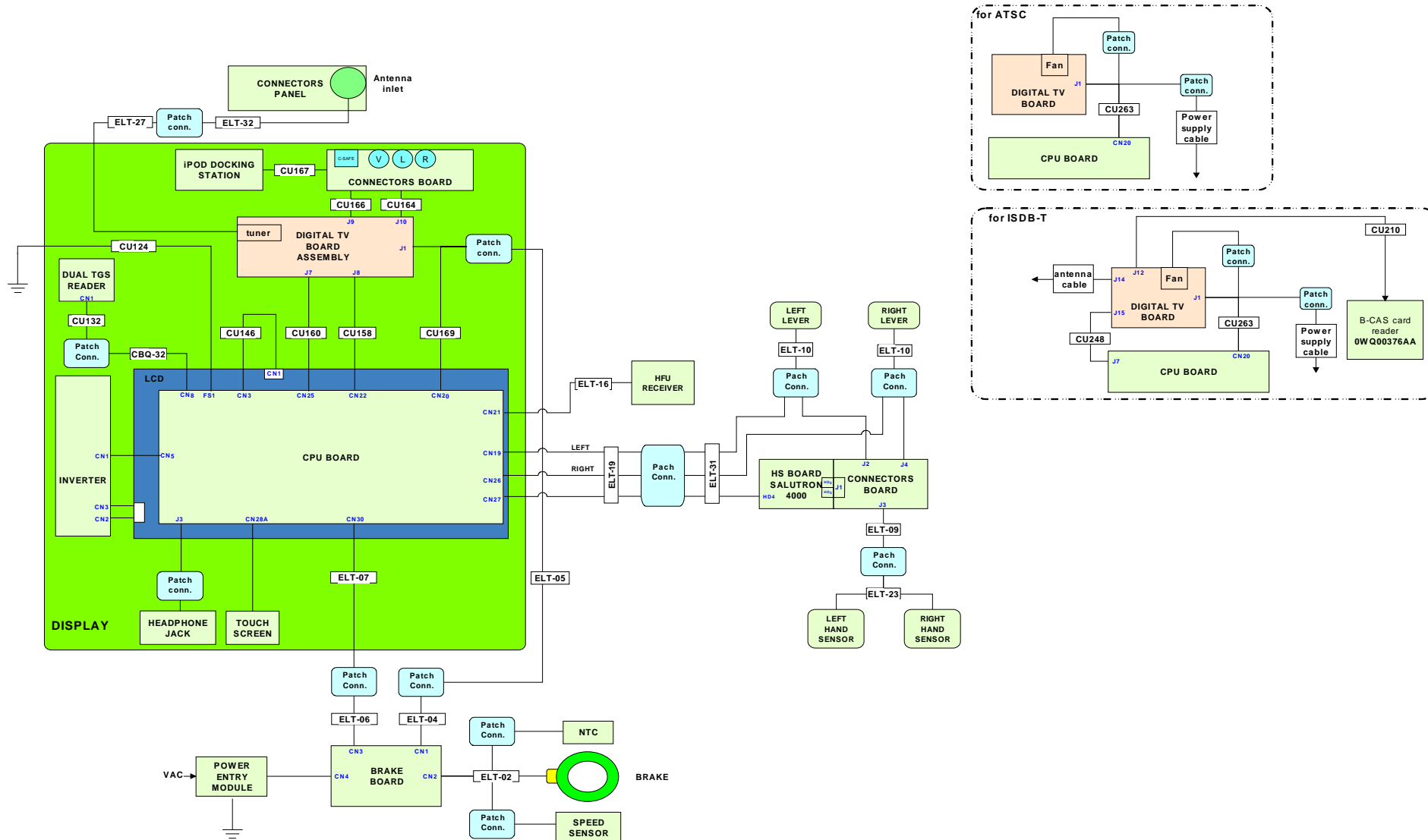
Warning - Note	
*	For machines up to the following S.N., you have to use the code: Per machine fino ai seguenti S.N., si deve usare il codice: D4553L080000106 / D4554L080000128 / D4573L080000152 / D4574L080000320 / D4573E080000030 / D4573I080000298 0B001000AA



**H0002585AA**

Rif. Ref.	Codice Code	Descrizione	Description	Q.tà Q.ty
1	0B000671AD	Boccola	Bushing	1
2	0K000347AA	Cuscinetto	Bearing	2

Rif. Ref.	Codice Code	Descrizione	Description	Q.tà Q.ty
3	0U000205AA	Puleggia	Pulley	1



Riferimento Reference	Codice Code
CBQ-32	0WC00392AB
CU124	0WCU0124AA
CU132	0WCU0132AA
CU146	0WCU0146AA
CU158	0WCU0158AB
CU160	0WCU0160AA
CU164	0WCU0164AA
CU166	0WCU0166AA
CU167	0WCU0167AC
CU169	0WCU0169AB
CU210	0WCU0210AA
CU248	0WCU0248AA
CU263	0WCU0263AB

Riferimento Reference	Codice Code
ELT-02	0WC00504AB
ELT-04	0WC00506AB
ELT-05	0WC00507AB
ELT-06	0WC00508AB
ELT-07	0WC00509AB
ELT-09	0WC00511AB
ELT-10	0WC00512AC
ELT-16	0WC00518AC
ELT-19	0WC00521AC
ELT-23	0WC00525AB
ELT-27	0WC00529AC
ELT-31	0WC00582AD
ELT-32	0WC00614AB

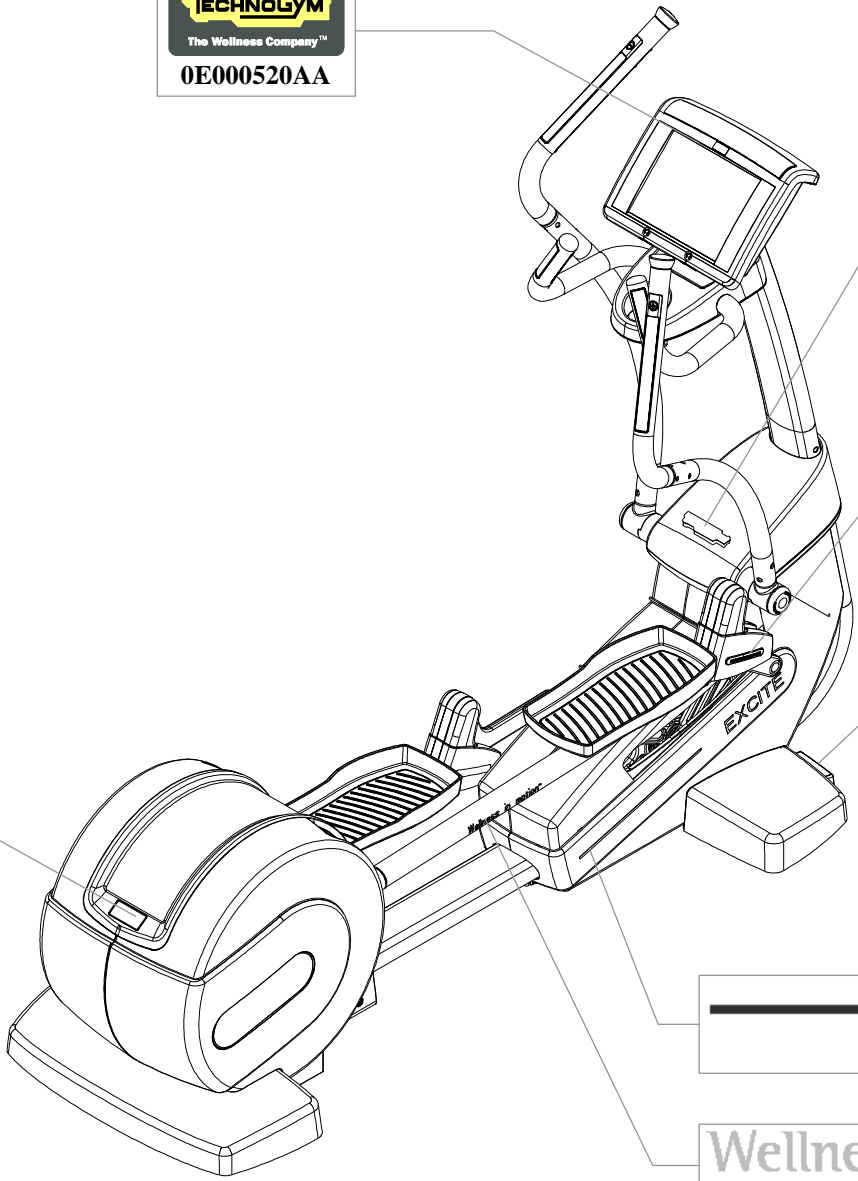
**TECHNOGYM**  
The Wellness Company™  
0E000520AA

**TECHNOGYM**  
0E000484AB

**naturalmovement**  
0E000499AA

LAN C-SAFE TV  
0E000481AA

**TECHNOGYM**  
The Wellness Company™  
0E000344AA



**EXCITE**  
0E000483AA-GG

Wellness in motion™  
0E000498AA

