

HP Color LaserJet Enterprise M554/M555 series

Future-proof performance for whatever business brings



Speed through tasks and save paper with a printer that won't keep users waiting



This printer uses exceptionally low amounts of energy—thanks to smart media-sensing and toner technology.*



Print your first page out in as fast as 6.6 seconds*



Print on both sides of the page with duplex printing by default.



Manage jobs and settings with an intuitive control panel



Print high-quality color results across a variety of media



Print high-volume jobs with 2,300-sheet maximum input*



Print up to 40/38 ppm (letter/A4), both simplex and duplex.

HP Color LaserJet Enterprise M554/M555 series

Your fleet—simple, protected, streamlined



Advanced and innovative HP JetAdvantage solutions simplify fleet management and expand capabilities.*



Centralize control of your print environment with HP Web Jetadmin*



Easily develop and deploy HP and third-party solutions*



HP FutureSmart firmware for future upgrades

Customizable 4.3-inch (10.9 cm) color touchscreen*

HP Open Extensibility Platform solutions

HP Trusted Platform Module standard

HP High-Performance Secure Hard Disk*

Hardware Integration Pocket solutions*

HP Color LaserJet Enterprise M554/M555 series

Print whenever business demands

Easily print and share content with wireless networking from your PC or mobile device*



Radically easy printing meets brilliantly simple management with HP Roam for Business*



Detect nearby printers from a mobile device, quickly connect, and easily print with Bluetooth® Low Energy connectivity.



Stay connected with an optional accessory for wireless, Bluetooth® Low Energy, and NFC touch-to-print.*



HP Color LaserJet Enterprise M554/M555 series

HP JetIntelligence: Powerful printing. Energy smart.



Print over 2x more pages with optional high-yield Original HP Toner cartridges.*



Print gauge technology



ColorSphere 3 toner



Anti-fraud technology



Optional high-yield cartridges*



Preinstalled cartridges



Automatic toner seal removal

HP Color LaserJet Enterprise M554/M555 series

HP Wolf Enterprise Security

The world's most secure printing*

Always on guard,
continually stopping
threats while adapting
to new ones

Protect sensitive business data and control device access. Increase security, restore control, and help avoid additional expenses.

- 1 **Validate BIOS integrity**
HP Sure Start
- 2 **Validate firmware**
Whitelisting
- 3 **Protect memory**
Run-time intrusion detection*
- 4 **Protect the network**
HP Connection Inspector
- 5 **Complete the check cycle**
HP Security Manager*
- 6 **Safeguard data**
HP Trusted Platform Module*

More than **100** embedded security features



HP Color LaserJet Enterprise M554/M555 series

Product walkaround: M555x shown



HP Color LaserJet Enterprise M554/M555 series

Series at a glance



M554dn (7ZU81A)



M555dn (7ZU78A)



M555x (7ZU79A)

- Print speed: Up to 35/33 ppm, letter/A4*
- 2.7-inch color display
- 100-sheet multipurpose tray, 550-sheet input tray 2
- Maximum input: up to 1,200 sheets*
- RMPV: 2,000 to 8,500 pages*
- ENERGY STAR® certified
- Automatic duplexing
- Hardware Integration Pocket*
- Optional wireless direct* and dual-band Wi-Fi® with Bluetooth® Low Energy

All the features of the M554dn model, plus:

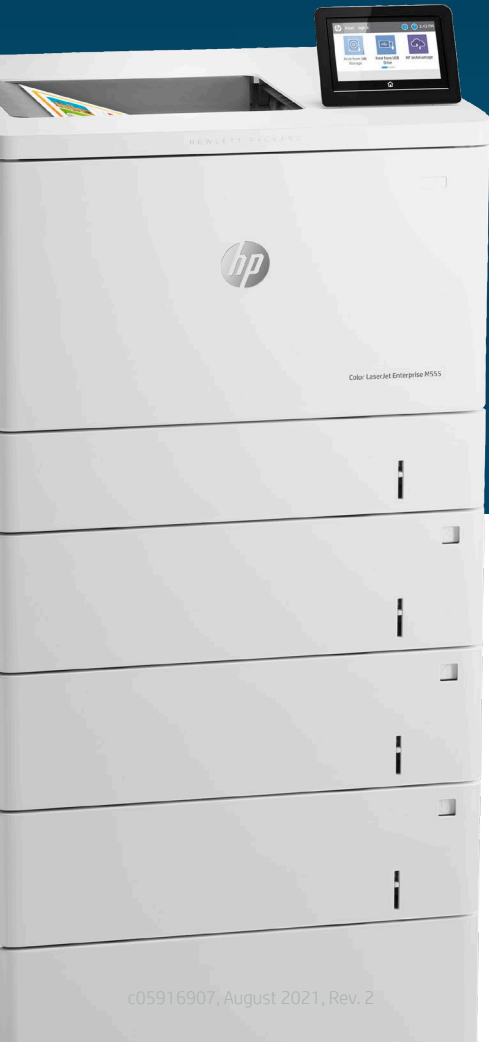
- Print speed: Up to 40/38 ppm, letter/A4*
- 4.3-inch (10.9 cm) color touchscreen
- Maximum input: up to 2,300 sheets*
- RMPV: 2,000 to 10,000 pages*

All the features of the M555dn model, plus:

- 550-sheet input tray 3
- Standard/maximum input: 1,200/2,300 sheets*
- Wireless direct* and dual-band Wi-Fi® with Bluetooth® Low Energy

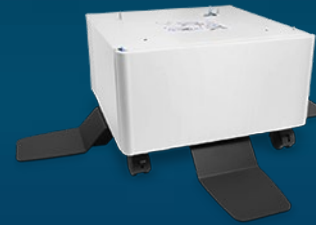
HP Color LaserJet Enterprise M554/M555 series

Paper-handling accessories



HP Color LaserJet 550-sheet Media Tray (B5L34A)

Supports up to 8.5 x 14 inches (216 x 356 mm)



HP Color LaserJet Printer Stand (B5L51A)

Not applicable



Optional

Add up to 3: M554dn, M555dn
Add up to 2: M555x

M555dn, M555x

Maximum device input with accessory*

2,300 sheets: M555dn, M555x
1,200 sheets: M554dn

Not applicable



HP Color LaserJet Enterprise M554/M555 series

Increased value generation over generation

HP Color LaserJet Enterprise M555x



HP Color LaserJet Enterprise M553x



HP LaserJet Enterprise 500 Color M551xh



Print speed: Up to 40/38 ppm, letter/A4—both simplex and duplex printing*

First-page-out time (FPOT) from sleep as fast as 8.5 seconds*

Typical Electricity Consumption (TEC): 0.464 kWh/week*

4.3-inch (10.9 cm) color touchscreen

Wireless direct* / dual-band Wi-Fi® with Bluetooth® Low Energy

Original HP Toner cartridges with JetIntelligence

Print speed: Up to 40/38 ppm, letter/A4—both simplex and duplex printing*

First-page-out time (FPOT) from sleep as fast as 8.5 seconds*

Typical Electricity Consumption (TEC): 1.98 kWh/week*

4.3-inch (10.9 cm) color touchscreen

Wireless direct* / NFC touch-to-print*

Original HP Toner cartridges with JetIntelligence

Simplex: Up to 33/32 ppm, letter/A4*
Duplex: Up to 31/29 ipm, letter/A4*

FPOT from sleep as fast as 18 seconds*

TEC: 4.053 kWh/week*

4-line graphical color display with 3 lights and 7 buttons

Not available

Original HP toner cartridges

HP Color LaserJet Enterprise M554/M555 series

Disclaimers and trademarks

Disclaimers

Easy-access USB: An administrator must enable the easy-access USB port before use.

First-page-out time: Measured using ISO/IEC 17629. For more information, see hp.com/go/printerclaims. Exact speed varies depending on the system configuration, software application, driver, and document complexity.

Hardware Integration Pocket: Solutions deployed through the Hardware Integration Pocket (HIP) may require additional purchase.

HP High-Performance Secure Hard Disk: The encrypted HP High-Performance Secure Hard Disk is optional on the M554dn, M555dn, and M555x.

HP JetAdvantage Private Print: Standard only on the HP LaserJet Enterprise M555x. HP JetAdvantage Private Print is available only in North America and select European countries on many HP printers and MFPs. Feature is available at no charge and requires the printer be connected to the Internet with web services enabled. Card reader is available for separate purchase for selected HP devices with touchscreens. For more information and device compatibility details, see hpietadvantage.com.

HP Security Manager: HP Security Manager must be purchased separately. For details, see hp.com/go/securitymanager.

HP JetAdvantage Solutions: Some solutions require download or additional purchase. Learn more at hp.com/go/printingsolutions.

HP Roam for Business: To enable HP Roam, some devices may require firmware to be upgraded and an optional accessory to add Bluetooth® Low Energy (BLE) beaconing capabilities. Subscription may be required. For more information, visit hp.com/go/roam.

HP Trusted Platform Module: Use of the HP Trusted Platform Module may require a firmware upgrade.

HP Web Jetadmin: HP Web Jetadmin is available for download at no additional charge at hp.com/go/wja.

Low Typical Electricity Consumption: Based on HP testing using the ENERGY STAR® program's Typical Electricity Consumption (TEC) method or as reported on energystar.gov vs. competitive single-function color laser printers with print speeds between 31 and 44 pages per minute (ppm) as of November 2014. Actual results may vary.

Maximum input capacity: Purchase of optional paper trays required to reach maximum input capacity.

Mobile printing: Local printing requires mobile device and printer be on the same network or have a direct wireless connection. Wireless performance is dependent on physical environment and distance from access point. Wireless operations are compatible with 2.4 GHz operations only. Remote printing requires an Internet connection to an HP web-connected printer. App or software and HP ePrint account registration may also be required. Wireless broadband use requires separately purchased service contract for mobile devices. Check with service provider for coverage and availability in your area. See hp.com/go/mobileprinting for more details. Some features require purchase of an optional accessory.

More pages: Based on cartridge yields for HP 212A compared with HP 212X Original HP toner cartridges. For more information, see hp.com/go/learnaboutsupplies.

NFC touch-to-print: NFC touch-to-print capability is standard on the HP Color LaserJet Enterprise M555x only. Requires purchase of optional HP Jetdirect 3100w BLE/NFC/Wireless Accessory for the HP Color LaserJet Enterprise M554dn and M555dn. Mobile device must support near-field communications (NFC)-enabled printing. For more information, see hp.com/go/mobileprinting.

Optional high-yield cartridges: High-yield Original HP 212X LaserJet toner cartridges not included; please purchase separately.

Print speed: Measured using ISO/IEC 24734; excludes first set of test documents. For more information, see hp.com/go/printerclaims. Exact speed varies depending on the system configuration, software application, driver, and document complexity. Standard and optional features vary by model.

RMPV: HP recommends that the number of printed pages per month be within the stated range for optimum device performance, based on factors including supplies replacement intervals and device life over an extended warranty period.

Typical Energy Consumption: Typical Electricity Consumption (TEC) rating represents the typical electricity consumed by a product during one week, measured in kilowatt-hours (kWh).

Wireless direct: Wireless direct printing is standard on the HP Color LaserJet Enterprise M555x only. Requires purchase of optional HP Jetdirect 3100w BLE/NFC/Wireless Accessory for the HP Color LaserJet Enterprise M554dn and M555dn. Mobile device needs to be connected directly to the Wi-Fi network of a wireless direct-capable MFP or printer prior to printing. Depending on mobile device, an app or driver may also be required. Wireless performance is dependent on physical environment and distance from the access point in the MFP or printer. For details, see hp.com/go/businessmobileprinting.

World's most secure printing: HP's most advanced embedded security features are available on HP Enterprise and HP Managed devices with HP FutureSmart firmware 4.5 or above. Claim based on HP review of 2021 published features of competitive in-class printers. Only HP offers a combination of security features to automatically detect, stop, and recover from attacks with a self-healing reboot, in alignment with NIST SP 800-193 guidelines for device cyber resiliency. For a list of compatible products, visit: hp.com/go/PrintersThatProtect. For more information, visit: hp.com/go/PrinterSecurityClaims.

Runtime intrusion detection is Common Criteria Certified: Third-party certification based on Common Criteria Information Technology Security Evaluation ISO/IEC 15408 Standard requirements as of May 2019-2024. Certification applicable to HP Enterprise and Managed devices running HP FutureSmart Firmware version 4.5.1 and later. For more information: <https://www.commoncriteriaportal.org/files/epfiles/Certification%20Report%20-%20HP%20Intrusion%20Detection.pdf>.

Trademark

Bluetooth is a trademark owned by its proprietor and used by HP under license.

ENERGY STAR is a registered mark owned by the U.S. Environmental Protection Agency.

Wi-Fi and **Wi-Fi Direct** are registered trademarks of Wi-Fi Alliance.

