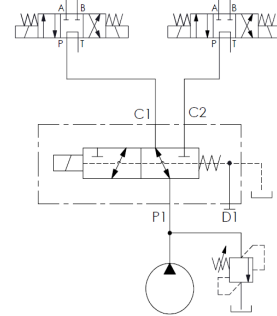


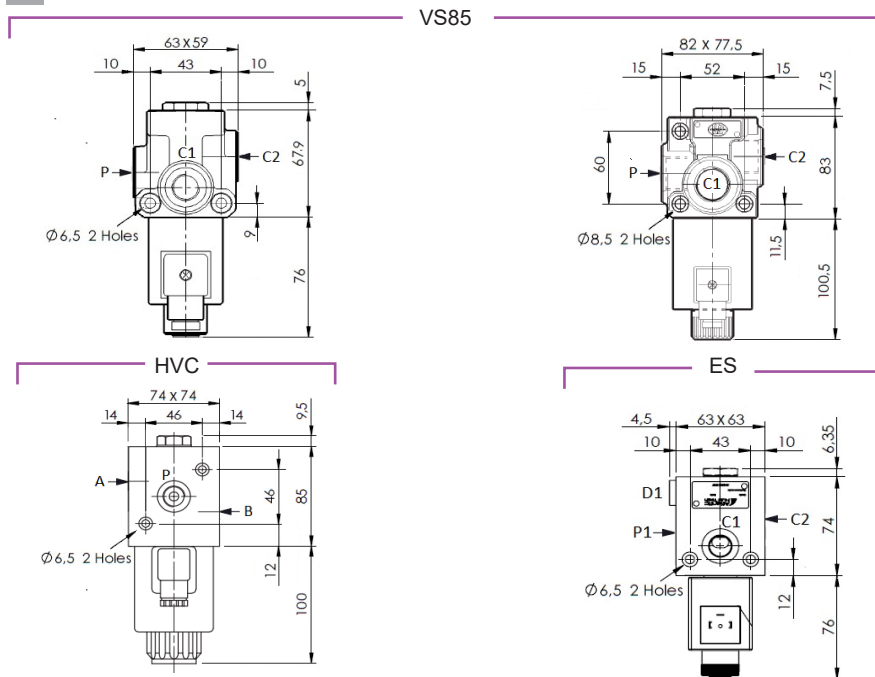
3 WAY / 2 POSITIONS

MAX GPM	MAX PSI	PORTS	VOLTAGE	PART NUMBER	CIRCUIT
10.5	3625	SAE-08	12V DC	ES000277	<p>C1 C2 P ES & VS MODELS</p> <p>B A P HVC MODEL</p> <p>C1 C2 P</p>
			24V DC	ES000212	
16	3625	SAE-08	12V DC	VS85-A-12VDC	
			24V DC	VS85-A-24VDC	
21	3000	SAE-08	12V DC	HVC-3/2-10-N-S08-12	
			24V DC	HVC-3/2-10-N-S08-24	
37	3625	SAE-12	12V DC	VS95-A-12VDC	
			24V DC	ES000314	
				VS95-A-24VDC	
10.5	3625	SAE-08	12V DC	ES000376	
			24V DC	ES000377	
16	3625	SAE-08	12V DC	VS85-D-12VDC	
			24V DC	VS85-D-24VDC	
37	3625	SAE-12	12V DC	VS95-D-12VDC	
			24V DC	VS95-D-24VDC	



TYPICAL APPLICATION

DIMENSIONS



COILS

DIN CONNECTOR MODELS
 * OTHER VOLTAGE & TYPE OF CONNECTORS AVAILABLE

PART NUMBER	VOLTAGE	FITS ON
271-0520	12 VDC	VS85, VS155 & VS245F
271-0521	24 VDC	
281-0617	12 VDC	VS95, VS315 & VS285F
281-0618	24 VDC	
AB000167	12 VDC	ES000277 / 312 / 318 / 320 / 376
AB000168	24 VDC	ES000212 / 313 / 319 / 321 / 377
4WE6-12VDC COIL DIN	12 VDC	KVH, 2KVH & MOP
4WE6-24VDC COIL DIN	24 VDC	
4WE10-12VDC COIL DIN	12 VDC	HVC-3/2 & SVK10
4WE10-24VDC COIL DIN	24 VDC	
AB000156	12 VDC	ES000314 / 316
AB000157	24 VDC	ES000315 / 317