

S1900 Series Unmanaged PoE+ Switches

Ideal for Small and Medium-sized Enterprise, Intelligent Community, Hotels, Parks and Office Network and Access Requirements

Models: S1900-5TP; S1900-8TP



Overview

S1900 Series Gigabit Ethernet Unmanaged PoE Switches provide a seamless network connection, all ports support Auto MDI/MDIX function. With the 10/100/1000Mbps Auto-Negotiation RJ45 ports, the switches are an ideal choice to promote the performance of the department and working group, can provide a high-performance network applicable solution in simple, economical and standard ways.

With the PoE ports, it can automatically detect and supply power with those IEEE 802.3at/af compliant Powered Devices (PD) such as AP, IP Cameras or IP Phones, etc., can meet the small and medium-sized enterprises, intelligent community, hotels, parks and office network and access requirements.

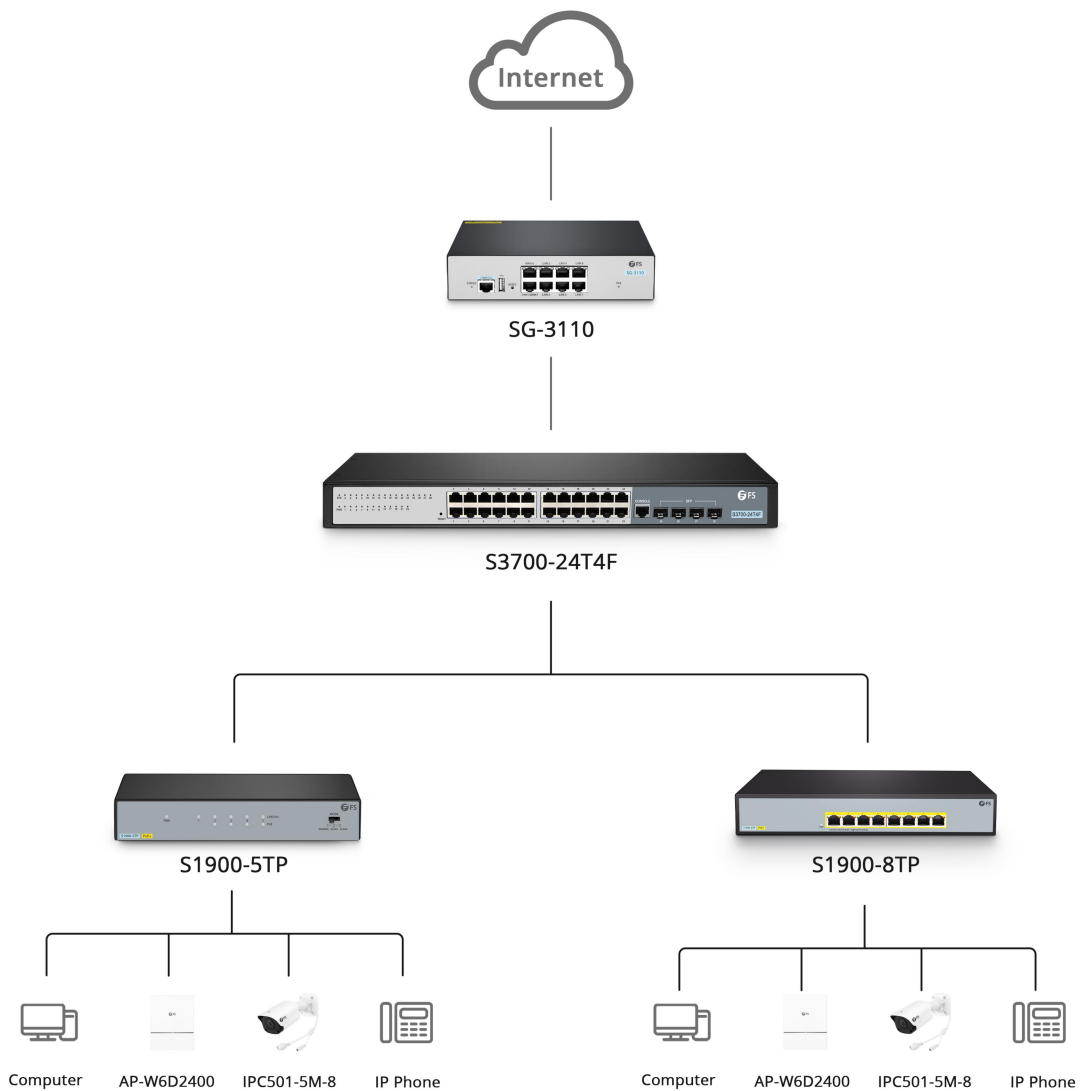
Benefits

- Plug and Play, No Configuration Needed
- Support Auto MDI/MDIX
- Solid Metal Housing - Built to Last
- Energy Efficient Design, Compliant with IEEE802.3az
- Works with IEEE 802.3af/at Compliant PDs

Key Features

- 10/100/1000Mbps Auto-Negotiation RJ45 ports supporting Auto-MDI/MDIX
- Comply with the standard IEEE802.3i, IEEE 802.3u, IEEE802.3x, IEEE802.3ab and IEEE802.3az
- Support PoE IEEE802.3af and IEEE802.3at compliant Powered Device (PD)
- Support IEEE802.3x flow control for Full-duplex Mode and backpressure for Half-duplex Mode
- Support MAC address auto-learning and auto-aging
- LED indicators for monitoring power, link, activity
- Support store and forward mode operates

Application



Technical Specification

S1900 series Gigabit Ethernet unmanaged PoE switches come with an outstanding performance and quality. Here's a look at the details.

Characteristics

| | S1900-5TP | S1900-8TP |
|--------------------------------|---|---|
| Ports | | |
| Ports | 5x 10/100/1000BASE-T RJ45 (Auto Negotiation/Auto MDI/MDIX) | 8x 10/100/1000BASE-T RJ45 (Auto Negotiation/Auto MDI/MDIX) |
| PoE Ports (RJ45) | 4x PoE+ ports compliant with 802.3at/af | 8x PoE+ ports compliant with 802.3at/af |
| Performance | | |
| Switching Capacity | 10Gbps | 15.625Gbps |
| Forwarding Rate | 7.44Mpps | 11.904Mpps |
| Packet Buffer | 0.19MB | 0.5MB |
| Jumbo Frame | 9KB | |
| MAC Address | 2K | 4K |
| Transfer Method | Store-and-Forward | |
| Standards and Protocols | IEEE802.3i, IEEE802.3u, IEEE802.3ab, IEEE802.3x, IEEE802.3az, IEEE802.3at, IEEE802.3af | |
| Network Media | 10BASE-T: UTP Cat3 or better (maximum 100m) 100BASE-T: UTP Cat5 or better (maximum 100m) 1000BASE-T: UTP Cat5e or better (maximum 100m) | |
| Normal VLAN/MODE | Port 2 to 5 can communicate with port 1 directly, Port 2 to 5 can't communicate with each other Port 1 works as an Up-link port, Port 1 to 5 10/100/1000Mbps Auto-Negotiation | All ports can communicate with each other |
| Monitoring VLAN | Port 2 to 5 can communicate with port 1 directly, Port 2 to 5 can't communicate with each other Port 1 works as an Up-link port, Port 2 to 5 fixed rate in 10Mbps, Port 1 10/100/1000Mbps Auto- Negotiation | / |
| Power | | |
| Power Supply | DC 51V, 1.25A External Power Supply | AC 100-240V/50-60Hz 150W Internal Power |
| Power Pin Assignment | 1/2(+), 3/6(-) | |
| PoE Budget | 60W max | 140W max |
| Power Consumption | Maximum (PoE+ on): 66.1W (220V/50Hz) | Maximum: AC 165.4W (220V/50Hz) |

Characteristics

| | S1900-5TP | S1900-8TP |
|--|-----------|-----------|
|--|-----------|-----------|

Physical Specifications

| | | |
|--------------------|-----------------------------------|-----------------------------------|
| Fan | Fanless | 1 Built-in |
| Product Material | Steel Shell | |
| Mounting Methods | Desktop Mounting Wall Mounting | Desktop Mounting Rack Mounting |
| Dimensions (H×W×D) | 1.10"x6.38"x4.02" (28x162x102mm) | 1.74"x11.02"x7.09" (44x280x180mm) |

Environmental Specifications

| | | |
|-----------------------|--------------------------------|-----------------------------|
| Operating Temperature | 32°F to 104°F (0°C to 40°C) | 32°F to 113°F (0°C to 45°C) |
| Storage Temperature | -40°F to 158°F (-40°C to 70°C) | |
| Operating Humidity | 10% to 90% (Non-condensing) | |
| Storage Humidity | 5% to 90% (Non-condensing) | |

Warranty

| | |
|----------|---------|
| Warranty | 2 Years |
|----------|---------|

Ordering Information

| FS P/N | ID NO. | Description |
|------------|-------------------------|--|
| S1900-5T | #132526 | S1900-5T, 5-Port Gigabit Ethernet SOHO Unmanaged Switch, Metal, Fanless, Desktop/Wall-Mount |
| S1900-5TP | #132528 | S1900-5TP, 5-Port Gigabit Ethernet SOHO Unmanaged PoE+ Switch, 5 x PoE+ Ports @60W, Metal, Fanless, Desktop/Wall-Mount |
| S1900-8T | #132527 | S1900-8T, 8-Port Gigabit Ethernet SOHO Unmanaged Switch, Metal, Fanless, Desktop/Wall-Mount |
| S1900-8TP | #132529 | S1900-8TP, 8-Port Gigabit Ethernet SOHO Unmanaged PoE+ Switch, 8 x PoE+ Ports @140W, Metal, Desktop/RackMount |
| S1900-16T | #132530 | S1900-16T, 16-Port Gigabit Ethernet Unmanaged Switch, Metal, Fanless, Desktop/Wall-Mount |
| S1900-16TP | #132532 | S1900-16TP, 16-Port Gigabit Ethernet Unmanaged PoE+ Switch, 16 x PoE+ Ports@135W, Metal, Fanless, Desktop/Rackmount |
| S1900-24T | #132531 | S1900-24T, 24-Port Gigabit Ethernet Unmanaged Switch, Metal, Fanless, Desktop/Rackmount |



 <https://www.fs.com>



The information in this document is subject to change without notice. FS has made all efforts to ensure the accuracy of the information, but all information in this document does not constitute any kind of warranty.