

SONY

BRAVIA™ HD Professional Displays

Displays designed for business

32" – 50"
WE6/WF6

FWD-32WE615/T
FWD-43W66F/T
FWD-50W66F/T





Full HD picture quality

Bring the incredible depth and quality of full HD resolution to your organisation with BRAVIA Professional Displays, available in 32" – 50" screen sizes.

Superior displays designed for business

Advanced control, simple professional mode, optional interactive compatibility, an embedded platform for easy digital signage creation; our BRAVIA full HD* Displays are designed to suit all your professional needs so you always present a clear image.

Professional design

Our line-up offers all the technological performance and style you'd expect from BRAVIA.

Do more with our BRAVIA built-in solutions

Look no further with BRAVIA. Our new range features a number of fantastic built-in and optional solutions to customise your BRAVIA exactly the way you want. From media player, to TEOS Manage and TDM Digital Signage.

Key Features

Beautifully refined Full HD HDR pictures

High Dynamic Range (HDR) preserves subtle details that can get lost in the darkest and brightest areas of every scene, bringing you more dynamic, lifelike pictures in Full HD*.

* FWD-32WE615/T is HD Ready



Ultimate Picture Quality



Easily create digital signage**

Produce compelling digital signage with no prior training needed. Combine graphics, text, video and live web content to create attractive signage in minutes.

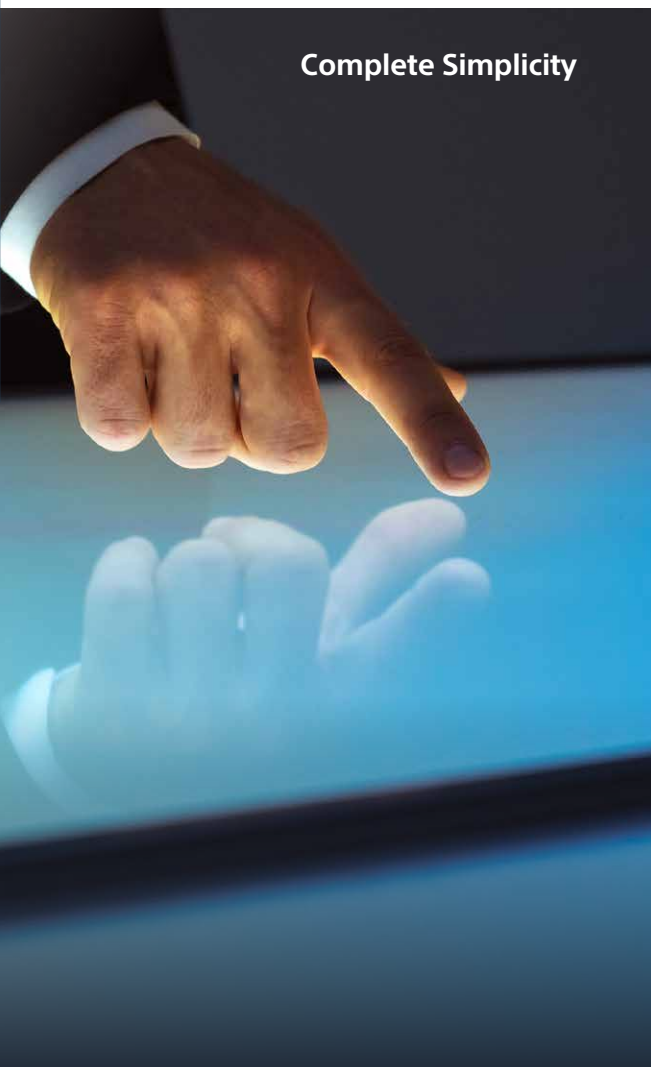
See finer detail

X-Reality™ PRO picture processing analyses every frame, matching scenes with our special image database to refine images and reduce noise.

Smoother movement

Motionflow XR inserts additional picture frames between the originals, ensuring smoother, sharper detail in fast-moving sequences.

Complete Simplicity



Installation friendly

The slim, stylish display offers a wide range of mounting options, is VESA compliant and integrates colour neatly into any corporate, retail or educational environment.

Basic Professional Mode

There is now more control to disable input or remote control, remove labels and block buttons; customise and store display settings and features, add security then copy them easily from display to display via USB flash memory.

The total touchscreen solution

Turn your BRAVIA into an interactive touchscreen with our IR and capacitive technology overlays. Designed to fit seamlessly onto the BRAVIA screen, it is easy to set up and allows 2 points or more for greater interaction. Contact your local Sony dealer for more information.



Bring the incredible depth and quality of Full HD resolution to your business

Ideal for:

Corporate presentations

Digital signage

Video conferencing

Education

Do more with BRAVIA solutions

Built-in solutions

Media Player

Easily play images, videos and HTML content on your Pro BRAVIA from a USB flash drive.



Optional solutions

Workplace management solution** (TEOSManage)

Sony BRAVIA Professional Displays are fully compatible with TEOS Manage. Intelligent workspaces can now have complete control of all of their connected devices and content in boardrooms, meeting rooms, offices, public areas and other locations.



Digital Signage Platform** (TDM Digital Signage)

Create and generate your signage content simply and without limitation. This easy-to-use authoring tool lets you combine text, graphics, video, social media feeds and other live web content to produce dynamic marketing messages.



** Requires TEP-X96 Player

WE6/WF6-series Specifications

		FWD-32WE615/T	FWD-43W66F/T	FWD-50W66F/T
Display features	Screen Size (inch, measured diagonally)	32" (31.5")	43" (42.5")	50" (49.5")
	Brightness (cd/m ²)		350	
	Native contrast ratio	1500:1	1300:1	5000:1
	Dynamic contrast ratio		300000:1	
	Display resolution (H x V, pixels)	1366x768		1920x1080
	Dimming type		Frame Dimming	
	Display device		LCD	
	Backlight type	EDGE LED		Direct LED
	Operation time		18/7	
Aspect Ratio		16:09		
Professional features	Professional Hidden Mode		Yes	
	Multicast/ IPTV		Yes	
	Compatible with TDM Digital Signage/TEOS Solutions		Yes (Requires TEP-X96 player)	
	Operating System		Linux	
Display System	On-board Storage (GB)		4GB	
	TV System (Digital Terrestrial)		DVB-T/T2	
	TV System (Digital Cable)		DVB-C	
	TV System (Digital Sat)		DVB-S/S2	
	Number of Tuners (Terrestrial/Cable)		1(Digital/Analog)	
Network Features	Number of Tuners (Sat)		1	
	Wi-Fi Direct		Yes	
	Wi-Fi Certified		Yes	
	Codec for Home Network		MPEG1/MPEG2TS/AVCHD/MP4/AVI/WMV/LPCM/MP3/WMA/JPEG	
Convenience features	Wireless LAN		Integrated	
	USB playback codecs		MPEG1/MPEG2PS/MPEG2TS/AVCHD/MP4Part10/MP4Part2/AVI(XVID)/AVI(MotionJpeg)/WMV9/MKV/WEBM/WAV/MP3/WMA/JPEG	
	HDMI-CEC		Yes	
	i-Manual	-		Yes
	On Screen Clock		Yes	
	Sleep Timer		Yes	
Control specs	On/Off Timer		Yes	
	Display Language		BUL/CAT/CZE/DAN/GER/GRE/ENG/SPA/EST/FIN/FRE/HEB/HRV/HUN/ITA/KAZ/LIT/LAV/DUT/NOR/POL/POR/RUM/RUS/SLO/SLV/SRP/SWE/TUR/UKR/BOS/MAC	
	IP Control		Yes	
	Pro mode		Yes (Basic)	
Inputs & Outputs	HDMI Signal		1080p(30,50,60Hz), 1080/24p, 1080i(50,60Hz), 720p(30,50,60Hz), 720/24p, 576p, 576i, 480p, 480i	
	HDCP		HDCP1.4	
	RF (Terrestrial/Cable) Connection Input(s)		1(Side)	
	IF (Satellite) Input(s)		1(Side)	
	Composite Video Input(s)	-		1 (Rear)
	HDMI inputs total	2(2Side)		2 (Side)
	USB ports	2 (Side/Stacking)	3 (Side/Stacking)	2 (Side/Stacking)
	Ethernet inputs		1 (Rear)	
Audio specifications	HDMI PC Input Format	640x480 (31.5kHz,60Hz), 800x600 (37.9kHz,60Hz), 1024x768 (48.4kHz,60Hz), 1280x720 (44.8kHz,60Hz), 1360x768 (47.7kHz,60Hz), 1152x864 (67.5kHz,75Hz), 1600x900 (55.9kHz,60Hz), 1680x1050 (65.3kHz,60Hz)	640x480(31.5kHz,60Hz), 800x600(37.9kHz,60Hz), 1024x768(48.4kHz,60Hz), 1280x720(44.8kHz,60Hz), 1280x1024(64.0kHz,60Hz), 1152x864(67.5kHz,75Hz), 1600x900(55.9kHz,60Hz), 1680x1050(65.3kHz,60Hz), 1920x1080(67.5kHz,60Hz)	
	PCMCIA Slot(s)		1 (Top)	
	Speaker Position		Down Firing	
	Audio Power Output		5W + 5W	
Video Specifications	Wide Mode		Wide Zoom/Normal/Full/Zoom/14:9	
	4:3 Default		Yes	
	Video Processing		X-Reality PRO	
Design Features	HDR (High Dynamic Range) compatibility		Yes(HDR10, HLG)	
	Cable Management		Yes	
	Frame color		Black	
	Stand Design	Silver U Slate		Silver Chevron
Eco & energy saving	VESA® Hole Spacing Compatible		Yes	
	VESA® Hole Pitch(W x H)	10.0x20.0 cm		20.0x20.0 cm
	Energy Label Rating	A	A+	A
	Power Consumption	Standard: 41.0W	Standard: 51.0W	Standard: 80.0W
	Power Consumption (in Standby)		0.50W	
Dimensions	Peak luminance ratio for EU	68%	76%	74%
	Mercury content(mg)		0.0	
	Power Saving Mode / Back Light Off Mode		Yes	
Weights (Approx.)	Display only (W x H x D)	Approx. 73.1x44.2x7.0 cm	Approx. 97.4x57.2x6.8(0.90) cm	Approx. 113.0x66.0x6.8(0.90) cm
	Display with Stand (W x H x D)	Approx. 73.1x49.0x18.7 cm	Approx. 97.4x62.8x26.8 cm	Approx. 113.0x71.9x26.8 cm
Optional accessories	Display only	Approx. 5.8 kg	Approx. 7.8 kg	Approx. 11 kg
	Display with Stand	Approx. 6.2 kg	Approx. 8.2 kg	Approx. 11.4 kg
Service and Warranty	Package Carton(Gross)	Approx. 9 kg	Approx. 12 kg	Approx. 16 kg
	Wallmount Bracket	SU-WL450(Terminal access limitation)) Depends on country selection	SU-WL450(Terminal access limitation, refer to SU-WL450 product page)	
Standard Warranty	Standard Warranty	3 Years with Advanced Exchange		
	PrimeSupport 2 years extension reference	PSP.FW6G-32.2X	PSP.FW6G-43.2X	PSP.FW6G-50.2X

Optional accessories



CAB-VGAHDMI1
VGA to HDMI cable



TEP-X96 player



TEOS Manage licenses
TEM-CO10
TEM-MR10
TEM-DS10



SU-WL450/PSE
Wall Mount



TDM digital signage software licenses
TDM-DSTY: 1 year
TDM-DS3Y: 3 years



Totems
TOT-XXWE6-IR10
TOT-XXWE6-CA10



Front Covers
FC-XXWE6/W
FC-XXWE6/WO



Touch overlays
TO-XXWE6-IR10
TO-XXWE6-CA10



Kiosks
KIO-XXWE6-IR10
KIO-XXWE6-CA10

*XX to be replaced by the display size.
Please find more accessories on our website.

PrimeSupport

All Sony BRAVIA Professional Displays sold into the EU, Norway and Switzerland come supplied with a 3 Year PrimeSupport pack, offering unique services and benefits, including:

- Freephone telephone helpdesk support (00 800 7898 7898) in 5 languages.
- A completely new replacement model rather than repair as standard.

In addition, optional PrimeSupport Plus packs can be purchased to add a 2 year extension of the standard 3 year PrimeSupport and to give long-term assurance of expert support, technical assistance for 5 years from purchase date.

PrimeSupport Pro

For full features visit
pro.sony/products/professional-displays

© 2020 Sony Corporation. All rights reserved. Reproduction in whole or in part without permission is prohibited. Features and specifications are subject to change without notice. All non-metric weights and measurements are approximate. 'Sony' and 'BRAVIA' are registered trademarks or trademarks of Sony Corporation. All other trademarks are the property of their respective owners.

Sony is the leading supplier of AV/IT solutions to businesses across a wide variety of sectors including, Media and Broadcast, Video Security, Medical, Digital Cinema and Displays. It delivers products, systems and applications to enable the creation, manipulation and distribution of digital audio-visual content that add value to businesses and their customers. With over 25 years' experience in delivering innovative market-leading products, Sony is ideally placed to deliver exceptional quality and value to its customers. Collaborating with a network of established technology partners, Sony delivers end-to-end solutions that address the customer's needs, integrating software and systems to achieve each organisation's individual business goals. For more information please visit www.pro.sony

Distributed by

SONY