

Southwire™

CABLE TIES

CATALOG

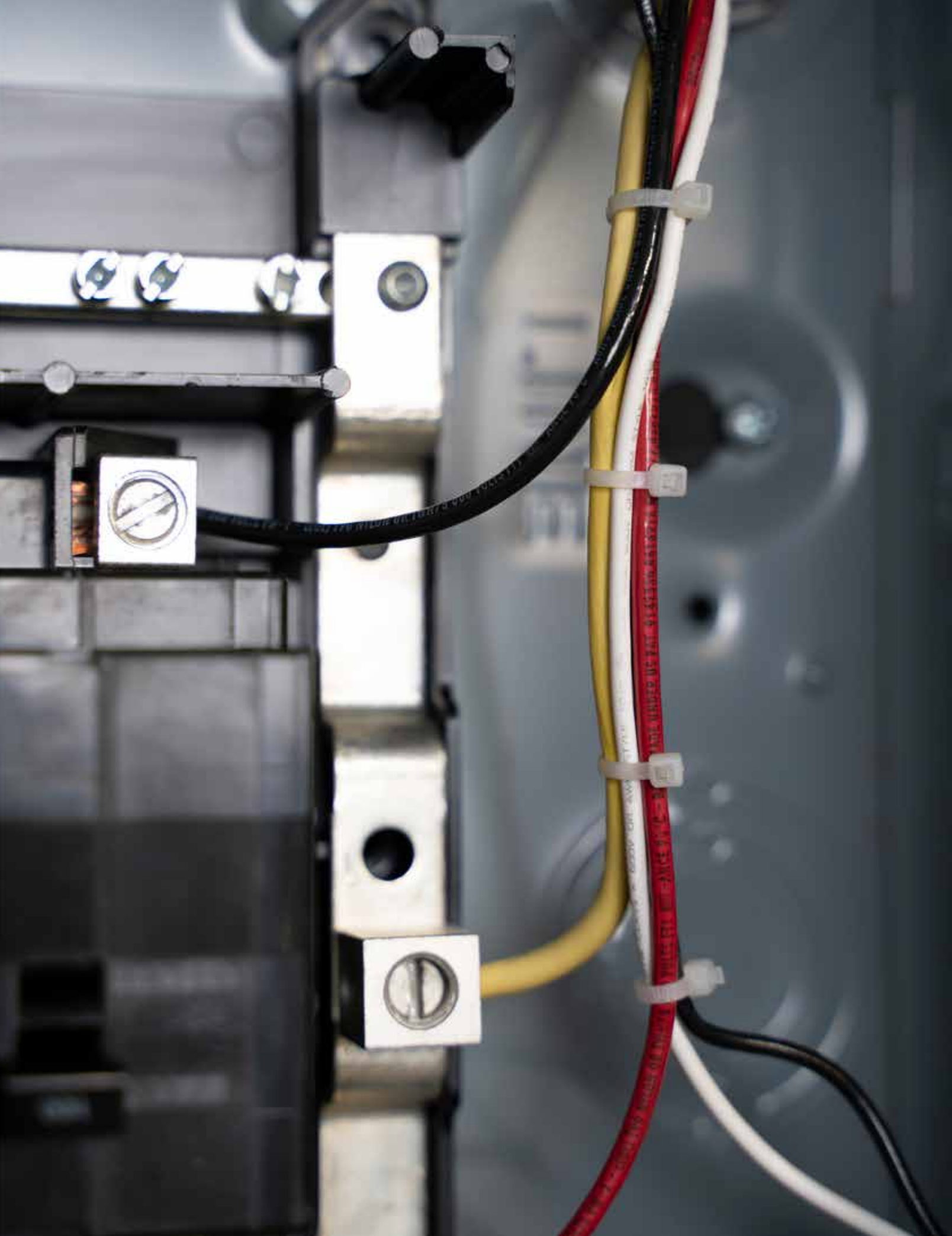
**[BUILT FOR DURABILITY.
BUILT FOR RELIABILITY.
BUILT FOR WORK.™]**

SOUTHWIRE.COM

CABLE TIES

Southwire offers an extensive selection of cable bundling and securing products to meet the needs of our customers.

Standard and Plenum Rated Cable Ties
Releasable and EZ-OFF™ Cable Ties
Heat Stabilized and Cold Weather Cable Ties
Mounting Head Cable Ties
Metal Detectable Cable Ties
Heavy Duty Mountable Cable Ties
Self-Cutting Cable Ties
Clamp Ties



CABLE TIES

NATURAL WHITE - INDOOR USE



FEATURES

- Operating temperature minimum -40°F to maximum 185°F
- Easy grab tip for pick up from flat surfaces
- Low insertion for quick installation
- High Yield Strength

APPLICATIONS

- Safely and easily secures wire bundles and harness components

STANDARD MATERIAL

- Polyamide 6.6

CERTIFICATIONS

- AH2 Rated
- 50 & 120LB Series UL Type 21S
- Flammability rating UL 94-V2

PART #	TENSILE STRENGTH (LBS.)	LENGTH	WIDTH	THICKNESS	MAX. BUNDLE DIAMETER	BAG QTY.	CASE QTY.	WEIGHT/CASE (LBS.)
BR4M9-C	18	4.1"	0.096"	0.035"	0.75"	100	1,000	1
BR6M9-C	18	6.1"	0.096"	0.05"	1.25"	100	1,000	1.1
BR8M9-C	18	8.1"	0.096"	0.05"	2.0"	100	1,000	1.5
BR5I9-C	40	5.7"	0.142"	0.05"	1.25"	100	1,000	2
BR8I9-C	40	8.7"	0.142"	0.05"	2.0"	100	1,000	2
BR7S9-C	50	7.6"	0.18"	0.054"	2.0"	100	1,000	2
BR11S9-C	50	11.1"	0.18"	0.054"	3.0"	100	1,000	3
BR14S9-C	50	14.6"	0.18"	0.054"	4.0"	100	1,000	3
BR8L9-C	120	9"	0.298"	0.069"	2.0"	100	1,000	2
BR11L9-C	120	12"	0.298"	0.069"	3.0"	100	1,000	2
BR14L9-C	120	14.6"	0.298"	0.069"	4.0"	100	1,000	3

PART #	TENSILE STRENGTH (LBS.)	LENGTH	WIDTH	THICKNESS	MAX. BUNDLE DIAMETER	BAG QTY.	CASE QTY.	WEIGHT/CASE (LBS.)
BL4M9-C	18	4.1"	0.096"	0.035"	0.75"	100	10,000	6.8
BL4M9-M	18	4.1"	0.096"	0.035"	0.75"	1,000	10,000	6.8
BL6M9-C	18	6.1"	0.096"	0.05"	1.25"	100	20,000	24
BL6M9-M	18	6.1"	0.096"	0.05"	1.25"	1,000	20,000	24
BL8M9-C	18	8.1"	0.096"	0.05"	2.0"	100	20,000	30
BL8M9-M	18	8.1"	0.096"	0.05"	2.0"	1,000	20,000	30
BL5I9-C	40	5.7"	0.142"	0.05"	1.25"	100	10,000	17
BL5I9-M	40	5.7"	0.142"	0.05"	1.25"	1,000	10,000	17
BL8I9-C	40	8.7"	0.142"	0.05"	2.0"	100	10,000	24
BL8I9-M	40	8.7"	0.142"	0.05"	2.0"	1,000	10,000	24
BL7S9-C	50	7.6"	0.18"	0.054"	2.0"	100	10,000	30
BL7S9-M	50	7.6"	0.18"	0.054"	2.0"	1,000	10,000	30
BL11S9-C	50	11.1"	0.18"	0.054"	3.0"	100	5,000	20
BL11S9-D	50	11.1"	0.18"	0.054"	3.0"	500	5,000	20
BL11S9-M	50	11.1"	0.18"	0.054"	3.0"	1,000	5,000	20
BL14S9-C	50	14.6"	0.18"	0.054"	4.0"	100	5,000	25
BL14S9-D	50	14.6"	0.18"	0.054"	4.0"	500	5,000	25
BL14S9-M	50	14.6"	0.18"	0.054"	4.0"	1,000	5,000	25
BL8L9-C	120	9"	0.298"	0.069"	2.0"	100	2,500	21
BL8L9-D	120	9"	0.298"	0.069"	2.0"	500	2,500	21
BL11L9-C	120	12"	0.298"	0.069"	3.0"	100	2,000	22
BL11L9-D	120	12"	0.298"	0.069"	3.0"	500	2,000	22
BL14L9-C	120	14.6"	0.298"	0.069"	4.0"	100	2,000	26
BL24H9-L	175	24.1"	0.350"	0.087"	7.2"	50	500	15
BL30H9-L	175	29.6"	0.350"	0.087"	12.0"	50	500	19
BL36H9-L	175	36"	0.350"	0.087"	11.0"	50	500	21.5
BL48H9-L	175	48"	0.350"	0.087"	15.0"	50	500	27

CABLE TIES

CABLE TIES

BLACK UV STABILIZED - INDOOR/OUTDOOR USE



FEATURES

- Operating temperature minimum -40°F to maximum 185°F
- Easy grab tip for pick up from flat surfaces
- Low insertion for quick installation
- UV Resistant
- High Yield Strength

APPLICATIONS

- Safely and easily secures wire bundles and harness components

STANDARD MATERIAL

- Polyamide 6.6 UV Resistant

CERTIFICATIONS

- AH2 Rated
- 50 & 120LB Series UL Type 21S
- Flammability rating UL 94-V2

PART #	TENSILE STRENGTH (LBS.)	LENGTH	WIDTH	THICKNESS	MAX. BUNDLE DIAMETER	BAG QTY.	CASE QTY.	WEIGHT/CASE (LBS.)
BR4M0-C	18	4.1"	0.096"	0.035"	0.75"	100	1,000	1
BR6M0-C	18	6.1"	0.096"	0.05"	1.25"	100	1,000	1.1
BR8M0-C	18	8.1"	0.096"	0.05"	2.0"	100	1,000	1.5
BR5I0-C	40	5.7"	0.142"	0.05"	1.25"	100	1,000	2
BR8I0-C	40	8.7"	0.142"	0.05"	2.0"	100	1,000	2
BR7S0-C	50	7.6"	0.18"	0.054"	2.0"	100	1,000	2
BR11S0-C	50	11.1"	0.18"	0.054"	3.0"	100	1,000	3
BR14S0-C	50	14.6"	0.18"	0.054"	4.0"	100	1,000	3
BR8L0-C	120	9"	0.298"	0.069"	2.0"	100	1,000	2
BR11L0-C	120	12"	0.298"	0.069"	3.0"	100	1,000	2
BR14L0-C	120	14.6"	0.298"	0.069"	4.0"	100	1,000	3

PART #	TENSILE STRENGTH (LBS.)	LENGTH	WIDTH	THICKNESS	MAX. BUNDLE DIAMETER	BAG QTY.	CASE QTY.	WEIGHT/CASE (LBS.)
BL4M0-C	18	4.1"	0.096"	0.035"	0.75"	100	10,000	6.8
BL4M0-M	18	4.1"	0.096"	0.035"	0.75"	1,000	10,000	6.8
BL6M0-C	18	6.1"	0.096"	0.05"	1.25"	100	20,000	24
BL6M0-M	18	6.1"	0.096"	0.05"	1.25"	1,000	20,000	24
BL8M0-C	18	8.1"	0.096"	0.05"	2.0"	100	20,000	30
BL8M0-M	18	8.1"	0.096"	0.05"	2.0"	1,000	20,000	30
BL5I0-C	40	5.7"	0.142"	0.05"	1.25"	100	10,000	17
BL5I0-M	40	5.7"	0.142"	0.05"	1.25"	1,000	10,000	17
BL8I0-C	40	8.7"	0.142"	0.05"	2.0"	100	10,000	24
BL8I0-M	40	8.7"	0.142"	0.05"	2.0"	1,000	10,000	24
BL7S0-C	50	7.6"	0.18"	0.054"	2.0"	100	10,000	30
BL7S0-M	50	7.6"	0.18"	0.054"	2.0"	1,000	10,000	30
BL11S0-C	50	11.1"	0.18"	0.054"	3.0"	100	5,000	20
BL11S0-D	50	11.1"	0.18"	0.054"	3.0"	500	5,000	20
BL11S0-M	50	11.1"	0.18"	0.054"	3.0"	1,000	5,000	20
BL14S0-C	50	14.6"	0.18"	0.054"	4.0"	100	5,000	25
BL14S0-D	50	14.6"	0.18"	0.054"	4.0"	500	5,000	25
BL14S0-M	50	14.6"	0.18"	0.054"	4.0"	1,000	5,000	25
BL8L0-C	120	9"	0.298"	0.069"	2.0"	100	2,500	21
BL8L0-D	120	9"	0.298"	0.069"	2.0"	500	2,500	21
BL11L0-C	120	12"	0.298"	0.069"	3.0"	100	2,000	22
BL11L0-D	120	12"	0.298"	0.069"	3.0"	500	2,000	22
BL14L0-C	120	14.6"	0.298"	0.069"	4.0"	100	2,000	26
BL24H0-L	175	24.1"	0.350"	0.087"	7.2"	50	500	15
BL30H0-L	175	29.6"	0.350"	0.087"	12.0"	50	500	19
BL36H0-L	175	36"	0.350"	0.087"	11.0"	50	500	21.5
BL48H0-L	175	48"	0.350"	0.087"	15.0"	50	500	27

CABLE TIES

CABLE TIES - COLORED



FEATURES

- Operating temperature minimum -40°F to maximum 185°F
- Easy grab tip for pick up from flat surfaces
- Low insertion for quick installation
- High Yield Strength

APPLICATIONS

- Safely and easily secures wire bundles and harness components
- Colored cable ties are designed for use in general applications where unique identification is needed, while delivering ease of installation, consistent performance, and industry leading reliability

STANDARD MATERIAL

- Polyamide 6.6

CERTIFICATIONS

- AH2 Rated
- 50 & 120LB Series UL Type 21S
- Flammability rating UL 94-V2



PART #	TENSILE STRENGTH (LBS.)	ENVIRONMENT	COLOR	LENGTH	WIDTH	THICKNESS	MAX. BUNDLE DIAMETER	BAG QTY.	CASE QTY.	WEIGHT/ CASE (.)
BR4M(*)-C	18	INDOOR	SEE TABLE BELOW	4.1"	0.096"	0.035"	0.75"	100	1,000	6.8
BR6M(*)-C	18			6.1"	0.096"	0.05"	1.25"	100	1,000	24
BR8M(*)-C	18			8.1"	0.096"	0.05"	2.0"	100	1,000	30
BR5I(*)-C	40			5.7"	0.142"	0.05"	1.25"	100	1,000	17
BR8I(*)-C	40			8.7"	0.142"	0.05"	2.0"	100	1,000	24
BR7S(*)-C	50			7.6"	0.180"	0.055"	2.0"	100	1,000	30
BR11S(*)-C	50			11.1"	0.18"	0.054"	3.0"	100	1,000	20
BR14S(*)-C	50			14.6"	0.18"	0.054"	4.0"	100	1,000	25
BR8L(*)-C	120			9"	0.298"	0.069"	2.0"	100	1,000	21
BR11L(*)-C	120			12"	0.298"	0.069"	3.0"	100	1,000	22
BR14L(*)-C	120			14.6"	0.298"	0.069"	4.0"	100	1,000	26

*INSERT NUMBER SUFFIX FOR COLOR

SUFFIX	1	2	3	4	5	6
COLOR	BROWN	RED	ORANGE	YELLOW	GREEN	BLUE

*INSERT NUMBER SUFFIX FOR COLOR

SUFFIX	7	8	11	12	13	14	15
COLOR	PURPLE	GRAY	FLUORESCENT GREEN	FLUORESCENT PINK	FLUORESCENT YELLOW	FLUORESCENT ORANGE	FLUORESCENT BLUE

CABLE TIES

CABLE TIES - COLORED CONTINUED

PART #	TENSILE STRENGTH (LBS.)	ENVIRONMENT	COLOR	LENGTH	WIDTH	THICKNESS	MAX. BUNDLE DIAMETER	BAG QTY.	CASE QTY.	WEIGHT/ CASE (LBS.)
BL4M(*)-C	18	INDOOR	SEE TABLE BELOW	4.1"	0.096"	0.035"	0.75"	100	10,000	6.8
BL4M(*)-M	18			4.1"	0.096"	0.035"	0.75"	1,000	10,000	6.8
BL6M(*)-C	18			6.1"	0.096"	0.05"	1.25"	100	20,000	24
BL6M(*)-M	18			6.1"	0.096"	0.05"	1.25"	1,000	20,000	24
BL8M(*)-C	18			8.1"	0.096"	0.05"	2.0"	100	20,000	30
BL8M(*)-M	18			8.1"	0.096"	0.05"	2.0"	1,000	20,000	30
BL5I(*)-C	40			5.7"	0.142"	0.05"	1.25"	100	10,000	17
BL5I(*)-M	40			5.7"	0.142"	0.05"	1.25"	1,000	10,000	17
BL8I(*)-C	40			8.7"	0.142"	0.05"	2.0"	100	10,000	24
BL8I(*)-M	40			8.7"	0.142"	0.05"	2.0"	1,000	10,000	24
BL7S(*)-C	50			7.6"	0.180"	0.055"	2.0"	100	10,000	30
BL7S(*)-M	50			7.6"	0.180"	0.055"	2.0"	1,000	10,000	30
BL11S(*)-C	50			11.1"	0.18"	0.054"	3.0"	100	5,000	20
BL11S(*)-M	50			11.1"	0.18"	0.054"	3.0"	1,000	5,000	20
BL14S(*)-C	50			14.6"	0.18"	0.054"	4.0"	100	5,000	25
BL14S(*)-M	50			14.6"	0.18"	0.054"	4.0"	1,000	5,000	25
BL8L(*)-C	120			9"	0.298"	0.069"	2.0"	100	2,500	21
BL11L(*)-C	120			12"	0.298"	0.069"	3.0"	100	2,000	22
BL14L(*)-C	120			14.6"	0.298"	0.069"	4.0"	100	2,000	26

*INSERT NUMBER SUFFIX FOR COLOR

SUFFIX	1	2	3	4	5	6
COLOR	BROWN	RED	ORANGE	YELLOW	GREEN	BLUE

*INSERT NUMBER SUFFIX FOR COLOR

SUFFIX	7	8	11	12	13	14	15
COLOR	PURPLE	GRAY	FLUORESCENT GREEN	FLUORESCENT PINK	FLUORESCENT YELLOW	FLUORESCENT ORANGE	FLUORESCENT BLUE

CABLE TIES

CABLE TIES - RELEASABLE



FEATURES

- Operating temperature minimum -40°F to maximum 185°F
- Easy to use release tab
- Low insertion for quick installation
- High Yield Strength

APPLICATIONS

- Safely and easily secures wire bundles and harness components
- Releasable cable ties are designed for use in general temporarily or permanent applications, while delivering ease of installation, consistent performance, and industry leading reliability

STANDARD MATERIAL

- Polyamide 6.6

CERTIFICATIONS

- AH2 Rated
- 50 & 120LB Series UL Type 21S
- Flammability rating UL 94-V2



PART #	TENSILE STRENGTH (LBS.)	ENVIRONMENT	COLOR	LENGTH	WIDTH	THICKNESS	MAX. BUNDLE DIAMETER	BAG QTY.	CASE QTY.	WEIGHT/ CASE (LBS.)
BR7SR9-C	50	INDOOR	NATURAL	7.6"	0.18"	0.055"	2.0"	100	1,000	2
BR11SR9-C	50			11.1"	0.18"	0.055"	3.0"	100	1,000	2
BR14SR9-C	50			14.6"	0.18"	0.055"	4.0"	100	1,000	3
BR7SR0-C	50	INDOOR / OUTDOOR	BLACK	7.6"	0.18"	0.055"	2.0"	100	1,000	2
BR11SR0-C	50			11.1"	0.18"	0.055"	3.0"	100	1,000	2
BR14SR0-C	50			14.6"	0.18"	0.055"	4.0"	100	1,000	3

PART #	TENSILE STRENGTH (LBS.)	ENVIRONMENT	COLOR	LENGTH	WIDTH	THICKNESS	MAX. BUNDLE DIAMETER	BAG QTY.	CASE QTY.	WEIGHT/ CASE (LBS.)
BL7SR9-C	50	INDOOR	NATURAL	7.6"	0.18"	0.055"	2.0"	100	10,000	20
BL11SR9-C	50			11.1"	0.18"	0.055"	3.0"	100	5,000	20
BL14SR9-C	50			14.6"	0.18"	0.055"	4.0"	100	5,000	25
BL7SR0-C	50	INDOOR / OUTDOOR	BLACK	7.6"	0.18"	0.055"	2.0"	100	10,000	20
BL11SR0-C	50			11.1"	0.18"	0.055"	3.0"	100	5,000	20
BL14SR0-C	50			14.6"	0.18"	0.055"	4.0"	100	5,000	25

CABLE TIES

CABLE TIES - HEAT STABILIZED



FEATURES

- Operating temperature minimum -40°F to maximum 221°F
- Easy grab tip for pick up from flat surfaces
- Low insertion for quick installation
- High Yield Strength

APPLICATIONS

- Safely and easily secures wire bundles and harness components
- Heat Stabilized cable ties are utilized in harsh conditions where extreme heat is a concern

STANDARD MATERIAL

- Polyamide 6.6 UV Resistant Heat Stabilized

CERTIFICATIONS

- AH2 Rated
- UL Type 21
- Flammability rating UL 94-V2



PART #	TENSILE STRENGTH (LBS.)	ENVIRONMENT	COLOR	LENGTH	WIDTH	THICKNESS	MAX. BUNDLE DIAMETER	BAG QTY.	CASE QTY.	WEIGHT/ CASE (LBS.)
BL4MHS0-M	18	INDOOR / OUTDOOR	UV BLACK, HEAT STABILIZED	4.1"	0.096"	0.035"	0.75"	1,000	10,000	17
BL5IHS0-M	40			5.7"	0.142"	0.05"	1.25"	1,000	10,000	17
BL7SHS0-M	50			7.6"	0.18"	0.054"	2.0"	1,000	10,000	30
BL11SHS0-M				11.1"	0.18"	0.054"	3.0"	1,000	5,000	20
BL14SHS0-M				14.6"	0.18"	0.054"	4.0"	1,000	5,000	25
BL14LHS0-C	120			14.6"	0.298"	0.069"	4.0"	100	2,000	26

CABLE TIES - COLD WEATHER



FEATURES

- Operating temperature minimum -40°F to maximum 221°F
- Easy grab tip for pick up from flat surfaces
- Low insertion for quick installation
- Limited brittleness and flexible at cold temps (-20°F Installation Temp)

APPLICATIONS

- Safely and easily secures wire bundles and harness components
- Cold weather ties are used in applications where cold and sunlight are factors

STANDARD MATERIAL

- Polyamide 6.6 UV Resistant Elite Cold Weather

CERTIFICATIONS

- AH2 Rated
- UL Type 21S
- Flammability rating UL 94V-HB



PART #	TENSILE STRENGTH (LBS)	ENVIRONMENT	COLOR	LENGTH	WIDTH	THICKNESS	BAG QTY.	CASE QTY.
BL7SAW0-C	50	OUTDOOR/ INDOOR	BLACK, UV	7.6"	.18"	.054"	100	10,000
BL11SAW0-C				11.1"	.18"	.054"	100	5,000
BL14SAW0-C				14.6"	.18"	.054"	100	5,000
BL14LAW0-C	120			14.6"	.298"	.069"	100	2,000

EZ-OFF™ CABLE TIES



FEATURES

- Simply pull down tear-off arm located along the right side of cable tie head
- Patent # 7,062,820

APPLICATIONS

- Safely and easily secures wire bundles and harness components
- EZ-OFF™ cable ties are designed specifically to be tamper proof and removed without any cutting device

STANDARD MATERIAL

- Polypropylene

PART #	TENSILE STRENGTH (LBS.)	ENVIRONMENT	COLOR	LENGTH	WIDTH	THICKNESS	MAX. BUNDLE DIAMETER	BAG QTY.	CASE QTY.	WEIGHT/ CASE (LBS.)
BRTSP60-C	30	INDOOR	BLACK	5.6"	0.14"	0.054"	1.25"	100	1,000	2
BRTSP69-C	30		NATURAL	5.6"	0.14"	0.054"	1.25"	100	1,000	2

PART #	TENSILE STRENGTH (LBS.)	ENVIRONMENT	COLOR	LENGTH	WIDTH	THICKNESS	MAX. BUNDLE DIAMETER	BAG QTY.	CASE QTY.	WEIGHT/ CASE (LBS.)
BLTSP6(*)-C	30	INDOOR	SEE TABLE BELOW	5.6"	0.14"	0.054"	1.25"	100	10,000	23
BLTSP6(*)-M	30			5.6"	0.14"	0.054"	1.25"	1,000	10,000	23

*INSERT NUMBER SUFFIX FOR COLOR

SUFFIX	1	2	3	4	5	6	7	8	9	0
COLOR	BROWN	RED	ORANGE	YELLOW	GREEN	BLUE	PURPLE	GRAY	NATURAL	BLACK

CABLE TIES - MOUNTING HEAD



FEATURES

- Operating temperature minimum -40°F to maximum 185°F
- Easy grab tip for pick up from flat surfaces
- Low insertion for quick installation
- High Yield Strength

APPLICATIONS

- Safely and easily secures wire bundles and harness components
- Screw mount cable ties allow cable bundles to be secured permanently to any surface
- Ideal for communication racks, walls, or ceilings

STANDARD MATERIAL

- Polyamide 6.6 UV Resistant (Outdoor)
- Polyamide 6.6 (Indoor)

CERTIFICATIONS

- AH2 Rated
- UL Type 21
- Flammability rating UL 94-V2



PART #	TENSILE STRENGTH (LBS.)	ENVIRONMENT	COLOR	LENGTH	WIDTH	THICKNESS	MAX. BUNDLE DIAMETER	SCREW SIZE	BAG QTY.	CASE QTY.	WEIGHT/ CASE (LBS.)
BR7SMH9-C	50	INDOOR	NATURAL	7.6"	0.180"	0.055"	2.0"	#10	100	1,000	2
BR11SMH9-C	50			11.1"	0.180"	0.055"	3.0"	#10	100	1,000	2
BR14SMH9-C	50			14.6"	0.180"	0.055"	4.0"	#10	100	1,000	3
BR14LMH9-C	120			14.6"	0.298"	0.069"	4.0"	1/4"	100	1,000	3
BR7SMH0-C	50	INDOOR / OUTDOOR	BLACK	7.6"	0.180"	0.055"	2.0"	#10	100	1,000	2
BR11SMH0-C	50			11.1"	0.180"	0.055"	3.0"	#10	100	1,000	2
BR14SMH0-C	50			14.6"	0.180"	0.055"	4.0"	#10	100	1,000	3
BR14LMH0-C	120			14.6"	0.298"	0.069"	4.0"	1/4"	100	1,000	3

PART #	TENSILE STRENGTH (LBS.)	ENVIRONMENT	COLOR	LENGTH	WIDTH	THICKNESS	MAX. BUNDLE DIAMETER	SCREW SIZE	BAG QTY.	CASE QTY.	WEIGHT/ CASE (LBS.)
BL7SMH9-C	50	INDOOR	NATURAL	7.6"	0.180"	0.055"	2.0"	#10	100	5,000	20
BL7SMH9-M	50			7.6"	0.180"	0.055"	2.0"	#10	1,000	5,000	20
BL11SMH9-C	50			11.1"	0.180"	0.055"	3.0"	#10	100	5,000	21
BL14SMH9-C	50			14.6"	0.180"	0.055"	4.0"	#10	100	5,000	29
BL14LMH9-C	120			14.6"	0.298"	0.069"	4.0"	1/4"	100	2,000	31
BL7SMH0-C	50	INDOOR / OUTDOOR	BLACK	7.6"	0.180"	0.055"	2.0"	#10	100	5,000	20
BL7SMH0-M	50			7.6"	0.180"	0.055"	2.0"	#10	1,000	5,000	20
BL11SMH0-C	50			11.1"	0.180"	0.055"	3.0"	#10	100	5,000	21
BL14SMH0-C	50			14.6"	0.180"	0.055"	4.0"	#10	100	5,000	29
BL14LMH0-C	120			14.6"	0.298"	0.069"	4.0"	1/4"	100	2,000	31

CABLE TIES

CABLE TIES - METAL DETECTABLE



FEATURES

- Operating temperature minimum -40°F to maximum 185°F
- Easy grab tip for pick up from flat surfaces
- Low insertion for quick installation
- Teal color of easy identification in food processing areas

APPLICATIONS

- Safely and easily secures wire bundles and harness components
- Metal Detectable cable ties are impregnated with metal flakes and can be used safely and efficiently in a wide range of indoor food processing applications

STANDARD MATERIAL

- Polyamide 6.6

CERTIFICATIONS

- AH2 Rated
- 50 & 120LB Series UL Type 21S
- Flammability rating UL 94-V2
- FDA Approved: Complies with 21 CFR 177-1500



PART #	TENSILE STRENGTH (LBS.)	ENVIRONMENT	COLOR	LENGTH	WIDTH	THICKNESS	MAX. BUNDLE DIAMETER	BAG QTY.	CASE QTY.	WEIGHT/ CASE (LBS.)
BL4MMD-C	18	INDOOR	TEAL	4.1"	0.096"	0.035"	0.75"	100	10,000	6.8
BL4MMD-M	18			4.1"	0.096"	0.035"	0.75"	1,000	10,000	6.8
BL8IMD-C	40			8.7"	0.142"	0.050"	2.0"	100	10,000	24
BL8IMD-M	40			8.7"	0.142"	0.050"	2.0"	1,000	10,000	24
BL7SMD-C	50			7.6"	0.18"	0.054"	2.0"	100	10,000	30
BL7SMD-M	50			7.6"	0.18"	0.054"	2.0"	1,000	10,000	30
BL11SMD-C	50			11.1"	0.18"	0.054"	3.0"	100	5,000	20
BL14SMD-C	50			14.6"	0.18"	0.054"	4.0"	100	5,000	25
BL14LMD-C	120			14.6"	0.298"	0.069"	4.0"	100	2,000	26

CABLE TIES

CABLE TIES - HEAVY DUTY MOUNTABLE



FEATURES

- Operating temperature minimum -40°F to maximum 185°F
- Easy grab tip for pick up from flat surfaces
- Patented Design with Unique and integral mounting holes
- Easy to use release tab

APPLICATIONS

- Safely and easily secures wire bundles and harness components
- Easily mount to any standard surface with a screw or nail without splitting the tie itself, using the evenly spaced pre-molded holes

STANDARD MATERIAL

- Polyamide 6.6 UV Resistant

CERTIFICATIONS

- AH2 Rated

PART #	TENSILE STRENGTH (LBS.)	ENVIRONMENT	COLOR	LENGTH	WIDTH	THICKNESS	MAX. BUNDLE DIAMETER	BAG QTY.	CASE QTY.	WEIGHT/ CASE (LBS.)
58298240	50	INDOOR / OUTDOOR	UV BLACK	8"	0.37"	0.06"	2.0"	15	375	5.9
58298340	50			11"	0.37"	0.06"	3.0"	15	375	8.9
58298440	50			14"	0.37"	0.06"	4.0"	15	375	10.5
58298540	50			8"	0.37"	0.06"	2.0"	100	1,000	8.5
58298640	50			11"	0.37"	0.06"	3.0"	100	1,000	9.5
58298740	50			14"	0.37"	0.06"	4.0"	100	1,000	11.5
59506940	90			8"	0.56"	0.08"	2.0"	100	1,000	8.5
59507040	90			11"	0.56"	0.08"	3.0"	100	1,000	9.5
59507140	90			14"	0.56"	0.06"	4.0"	100	1,000	11.5

RELEASABLE



FEATURES

- Operating temperature minimum -40°F to maximum 185°F
- Easy grab tip for pick up from flat surfaces
- Patented Design with unique and integral mounting holes
- Easy to use release tab

APPLICATIONS

- Safely and easily secures wire bundles and harness components
- Easily mount to any standard surface with a screw or nail without splitting the tie itself, using the evenly spaced pre-molded holes

STANDARD MATERIAL

- Polyamide 6.6

CERTIFICATIONS

- AH2 Rated



PART #	TENSILE STRENGTH (LBS.)	ENVIRONMENT	COLOR	LENGTH	WIDTH	THICKNESS	MAX. BUNDLE DIAMETER	BAG QTY.	CASE QTY.	WEIGHT/ CASE (LBS.)
58298840	50	INDOOR	RED	8"	0.37"	0.06"	2.0"	100	1,000	8.5
58298940	50			11"	0.37"	0.06"	3.0"	100	1,000	9.5
58299040	50			14"	0.37"	0.06"	4.0"	100	1,000	11.5

CABLE TIES - AIR HANDLING

PLENUM RATED



FEATURES

- Operating temperature minimum -40°F to maximum 185°F
- Easy grab tip for pick up from flat surfaces
- Low profile style and reduced head height increases safety, eliminates snags, cuts, and abrasions to cables, surrounding products and users
- Meets UL 1565 specifications for low smoke generation, low heat release and mechanical strength

APPLICATIONS

- Safely and easily secures wire bundles and harness components
- Air handling spaces, above drop ceilings and below raised flooring
- UL listed suitable for use in air handling spaces in accordance with the section 300.00 (c) and (d) of the National Electrical Code rules 12-010(3), (4) and (5) and 12-020 of the Canadian Electrical Code part 1

STANDARD MATERIAL

- Polyamide 6.6

CERTIFICATIONS

- AH2 Rated
- 50 & 120LB Series UL Type 21S
- Flammability rating UL 94-V2



PART #	TENSILE STRENGTH (LBS)	COLOR	LENGTH	WIDTH	THICKNESS	MAX. BUNDLE DIAMETER	PACK	CASE QTY.
BL4MAH-C	18 LB	BURGUNDY	4.1"	0.096"	0.035"	.75"	100	10,000
BL7SAH-C	50 LB	BURGUNDY	7.6"	.18"	.054"	2"	100	5,000
BL11SAH-C	50 LB	BURGUNDY	11.1"	.18"	.054"	3"	100	5,000
BL14SAH-C	50 LB	BURGUNDY	14.6"	.18"	.054"	4"	100	5,000
BL14LAH-C	120 LB	BURGUNDY	14.6"	.298"	.069"	4"	100	2,000

CABLE TIES - MILSPEC



FEATURES

- Operating temperature minimum 40°F to maximum 185°F
- Easy grab tip for pick up from flat surfaces
- Low insertion for quick installation
- High Yield Strength

APPLICATIONS

- Safely and easily secures wire bundles and harness components
- Screw mount cable ties allow cable bundles to be secured permanently to any surface
- Ideal for communication racks, walls, or ceilings

STANDARD MATERIAL

- Polyamide 6.6 UV Resistant (Outdoor)
- Polyamide 6.6 (Indoor)

CERTIFICATIONS

- AH2 Rated
- 50 & 120LB Series UL Type 21S
- Flammability rating UL 94-V2



MILSPEC PART #	PART #	TENSILE STRENGTH (LBS.)	ENVIRONMENT	COLOR	LENGTH	WIDTH	THICKNESS	MAX. BUNDLE DIAMETER	BAG QTY.	CASE QTY.	WEIGHT/ CASE (LBS.)		
MS3367-4-9	BL4M9-M-MILSPEC	18	INDOOR	NATURAL	4.1"	0.096"	0.035"	0.75"	1,000	10,000	6.8		
MS3367-5-9	BL5I9-M-MILSPEC	40			5.7"	0.142"	0.05"	1.25"	1,000	10,000	17		
MS3367-1-9	BL7S9-M-MILSPEC	50			7.6"	0.180"	0.055"	2.0"	1,000	10,000	30		
MS3367-7-9	BL11S9-M-MILSPEC	50			11.1"	0.18"	0.054"	3.0"	1,000	5,000	20		
MS3367-2-9	BL14S9-M-MILSPEC	50			14.6"	0.18"	0.054"	4.0"	1,000	5,000	25		
MS3367-3-9	BL14L9-C-MILSPEC	120			14.6"	0.298"	0.069"	4.0"	100	2,000	26		
MS3367-10-9	BL24H9-L-MILSPEC	175			24.1"	0.350"	0.087"	7.2"	50	500	15		
MS3367-13-9	BL36H9-L-MILSPEC	175			36"	0.350"	0.087"	11.0"	50	500	21.5		
MS3367-4-(*)	BL4M(*)-M-MILSPEC	18		SEE TABLE BELOW	4.1"	0.096"	0.035"	0.75"	1,000	10,000	6.8		
MS3367-5-(*)	BL5I(*)-M-MILSPEC	40			5.7"	0.142"	0.05"	1.25"	1,000	10,000	17		
MS3367-1-(*)	BL7S(*)-M-MILSPEC	50			7.6"	0.180"	0.055"	2.0"	1,000	10,000	30		
MS3367-7-(*)	BL11S(*)-M-MILSPEC	50			11.1"	0.18"	0.054"	3.0"	1,000	5,000	20		
MS3367-2-(*)	BL14S(*)-M-MILSPEC	50			14.6"	0.18"	0.054"	4.0"	1,000	5,000	25		
MS3367-3-(*)	BL14L(*)-C-MILSPEC	120			14.6"	0.298"	0.069"	4.0"	100	2,000	26		
MS3367-4-0	BL4M0-M-MILSPEC	18			INDOOR / OUTDOOR	UV BLACK	4.1"	0.096"	0.035"	0.75"	1,000	10,000	6.8
MS3367-5-0	BL5I0-M-MILSPEC	40					5.7"	0.142"	0.05"	1.25"	1,000	10,000	17
MS3367-1-0	BL7S0-M-MILSPEC	50	7.6"	0.180"			0.055"	2.0"	1,000	10,000	30		
MS3367-7-0	BL11S0-M-MILSPEC	50	11.1"	0.18"			0.054"	3.0"	1,000	5,000	20		
MS3367-2-0	BL14S0-M-MILSPEC	50	14.6"	0.18"			0.054"	4.0"	1,000	5,000	25		
MS3367-3-0	BL14L0-C-MILSPEC	120	14.6"	0.298"			0.069"	4.0"	100	2,000	26		
MS3367-10-0	BL24H0-L-MILSPEC	175	24.1"	0.350"			0.087"	7.2"	50	500	15		
MS3367-13-0	BL36H0-L-MILSPEC	175	36"	0.350"			0.087"	11.0"	50	500	21.5		

*Insert number suffix for color

SUFFIX	1	2	3	4	5	6	7	8
COLOR	BROWN	RED	ORANGE	YELLOW	GREEN	BLUE	PURPLE	GRAY

CABLE TIES

CABLE TIES - SELF CUTTING



FEATURES

- Operating temperature minimum 32°F to maximum 185°F
- Easy grab tip for pick up from flat surfaces
- Tail breaks off neat and clean, with no sharp edges

APPLICATIONS

- Safely and easily secures wire bundles and harness components
- Quick and easy to install, no tools required

STANDARD MATERIAL

- Polyamide 6.6 UV Resistant (Outdoor)
- Polyamide 6.6 (Indoor)

PART #	TENSILE STRENGTH (LBS.)	ENVIRONMENT	COLOR	LENGTH	MAX. BUNDLE DIAMETER	BAG QTY.
CT46-308SC	50	INDOOR	NATURAL	8"	2.0"	50
CT46-311SC	50			11"	3.0"	50
CT46-314SC	50			14"	4.0"	50
CT46-308UVBSC	50	INDOOR / OUTDOOR	UV BLACK	8"	2.0"	50
CT46-311UVBSC	50			11"	3.0"	50
CT46-314UVBSC	50			14"	4.0"	50

CABLE TIES - FIR TREE PUSH MOUNT



FEATURES

- Operating temperature minimum -40°F to maximum 221°F
- Easy grab tip for pick up from flat surfaces
- Provide a secure grip in mounting holes and protect against dirt and other impurities
- Easily inserted into a pre-drilled hole and locks into place

APPLICATIONS

- Safely and easily secures wire bundles and harness components
- Push-mount cable ties snap quickly into a hole to attach a bundle to another surface

STANDARD MATERIAL

- Polyamide 6.6 UV Resistant Heat Stabilized

CERTIFICATIONS

- AH2 Rated
- Flammability rating UL 94-V2



PART #	TENSILE STRENGTH (LBS.)	ENVIRONMENT	COLOR	LENGTH	WIDTH	THICKNESS	MAX. BUNDLE DIAMETER	BAG QTY.	CASE QTY.	WEIGHT/ CASE (LBS.)
BL7SFTPM0-M	50	INDOOR / OUTDOOR	UV BLACK, HEAT STABILIZED	7.6"	0.18"	0.055"	2.0"	1,000	5,000	30

CABLE TIE MOUNTS WITH ADHESIVE



FEATURES

- Operating temperature minimum -40°F to maximum 185°F
- Apply with adhesive base or screw
- 4-way entry style

APPLICATIONS

- For safe organization of cables

STANDARD MATERIAL

- Polyamide 6.6 UV Resistant (Outdoor)
- Polyamide 6.6 (Indoor)

CERTIFICATIONS

- AH2 Rated
- Flammability rating UL 94-V2

PART #	ADHESIVE TYPE	COLOR	LENGTH	WIDTH	THICKNESS	MIN. BUNDLE DIAMETER	SCREW SIZE	BAG QTY.	CASE QTY.	WEIGHT/ CASE (LBS.)
BRMPM9-C	RUBBER	NATURAL	3/4"	3/4"	0.1875"	0.165"	0.162"	100	1,000	3.8
BRMPS9-C			1"	1"	0.198"	0.220"	0.210"	100	1,000	3.8
BRMPM0-C		UV BLACK	3/4"	3/4"	0.1875"	0.165"	0.162"	100	1,000	3.8
BRMPS0-C			1"	1"	0.198"	0.220"	0.210"	100	1,000	3.8
BRMPMA9-C	ACRYLIC	NATURAL	3/4"	3/4"	0.1875"	0.165"	0.162"	100	1,000	3.8
BRMPMA9-C			1"	1"	0.198"	0.220"	0.210"	100	1,000	3.8
BRMPMA0-C		UV BLACK	3/4"	3/4"	0.1875"	0.165"	0.162"	100	1,000	3.8
BRMPMA0-C			1"	1"	0.198"	0.220"	0.210"	100	1,000	3.8

PART #	ADHESIVE TYPE	COLOR	LENGTH	WIDTH	THICKNESS	MIN. BUNDLE DIAMETER	SCREW SIZE	BAG QTY.	CASE QTY.	WEIGHT/ CASE (LBS.)
BLMPM9-C	RUBBER	NATURAL	3/4"	3/4"	0.1875"	0.165"	0.162"	100	10,000	38
BLMPS9-C			1"	1"	0.198"	0.220"	0.210"	100	5,000	19
BLMPM0-C		UV BLACK	3/4"	3/4"	0.1875"	0.165"	0.162"	100	10,000	38
BLMPS0-C			1"	1"	0.198"	0.220"	0.210"	100	5,000	19
BLMPMA9-C	ACRYLIC	NATURAL	3/4"	3/4"	0.1875"	0.165"	0.162"	100	10,000	38
BLMPMA9-C			1"	1"	0.198"	0.220"	0.210"	100	5,000	19
BLMPMA0-C		UV BLACK	3/4"	3/4"	0.1875"	0.165"	0.162"	100	10,000	38
BLMPMA0-C			1"	1"	0.198"	0.220"	0.162"	100	5,000	19

CLAMP TIES

ADJUSTABLE AND RELEASABLE



FEATURES

- Large hang notch design
- Heavy duty carrying handle
- 360° rotating handle
- Easy release trigger
- Flexible tie design

APPLICATIONS

- Perfect for organizing, carrying or storing extension cords, conduit, hoses, booster cables and more

PART #	TENSILE STRENGTH (LBS.)	COLOR	MAX. BUNDLE DIAMETER	CASE QTY.	WEIGHT/CASE (LBS.)
58299240	50	BROWN	2.0"	25	5.9
58299340	100		3.0"	25	8.9
58299440	150		4.0"	20	10.5
58973240	50	GREEN	2.0"	25	8.5
58973340	100		3.0"	25	9.5
58973440	150		4.0"	20	11.5



Southwire™

CABLE TIES

CATALOG

get social with us:



[/SOUTHWIRETOOLS](#)



[/SOUTHWIRE-COMPANY](#)



[@SOUTHWIRETOOLS](#)



[@SOUTHWIRE](#)



SCAN TO LEARN MORE

WWW.SOUTHWIRE.COM | 1-855-SWTTOOLS

All Trademarks or Registered Trademarks (TM/®) are owned or licensed by Southwire Company.
Any other TM/®- Trademark or Registered Trademark of Southwire Company.