



WAN Acceleration Appliance (WXA) Series

Significantly enhanced WAN application performance and user experience

In today's distributed enterprise, efficient utilization of bandwidth, increased security, and ease of deployment and management are important factors when considering a WAN acceleration solution. Throughput can be exhausted by collaboration applications such as Microsoft® SharePoint and Windows® File Sharing. At the same time, due to the popularity of Web 2.0 and social media, an exponential increase in Internet traffic is already overburdening WAN bandwidth. This inefficient utilization of available bandwidth results in higher latency, lowering employee productivity. Spending more on increased bandwidth or enhanced services, or purchasing disparate point solutions, does not resolve the problem.

The Dell™ SonicWALL™ WAN Acceleration Appliance (WXA) Series enables you to easily and securely enhance WAN application performance at remote and branch offices, thus improving the end user experience that leads to increased productivity. Unlike standalone WAN acceleration products that are deployed either behind the firewall or between the firewall and WAN router, the Dell SonicWALL WXA Series is an integrated add-on to the Dell SonicWALL Next- Generation Firewall. The solution enables comprehensive scanning for intrusions and malware before accelerating the traffic across the VPN or dedicated WAN link, thus maximizing security and performance.

The WXA optimizes performance and reduces latency by transmitting only new or changed data across the network after initial file transfer, resulting in dramatically reduced traffic volumes. In addition, the managing firewall enables you to identify and prioritize application traffic while the WXA minimizes traffic between sites.

The Dell SonicWALL solution streamlines the placement, deployment, configuration, routing, management and integration of the WXA with other components such as VPNs. Consolidating WAN acceleration with core next-generation firewall technologies including intrusion prevention, anti-malware, and application intelligence, control and visualization at the gateway significantly increases security while lowering the total cost of ownership.

The powerful combination of a Dell SonicWALL Next-Generation Firewall and WXA enables you to more efficiently manage your bandwidth and simplify next-generation firewall and WAN Acceleration deployment and management without compromising security. Dell SonicWALL makes it easy for you to add one or more WXA solutions into your network by providing a variety of platform options including both hardware and virtual appliances as well as software.



Benefits:

- Simplified deployment, routing and integration
- Increased security
- Protocol optimization
- Byte caching and file caching
- Scalability through clustering
- Reduced TCO
- Data compression
- Windows File Sharing (WFS) acceleration
- HTTP (Web) caching
- Visualization
- WAN Acceleration client software

Features and benefits

Drastically simplify deployment, routing and integration of multiple WXA appliances across your network through complete provisioning and configuration by a Dell SonicWALL Next-Generation Firewall.

Add a layer of security by scanning all data for threats before sending it to the WAN acceleration appliance using Dell SonicWALL Reassembly-Free Deep Packet Inspection® technology.

Optimize network efficiency to give users LAN-like application performance over your WAN by decreasing latency and chattiness presented due to inefficient protocols or application communication.

Extend the long-term value of your existing WAN links and enhance the user experience by dramatically reducing bandwidth consumption through byte and file caching.

Scale to meet the WAN acceleration needs of a growing user population through clustering, which enables several Dell SonicWALL WXA solutions to be linked together at each location.

Reduce total cost of ownership (TCO) by increasing efficiency and overall utilization of your existing WAN bandwidth, thus avoiding costly WAN upgrades.

Increase performance and reduce latency with data compression across the WAN.

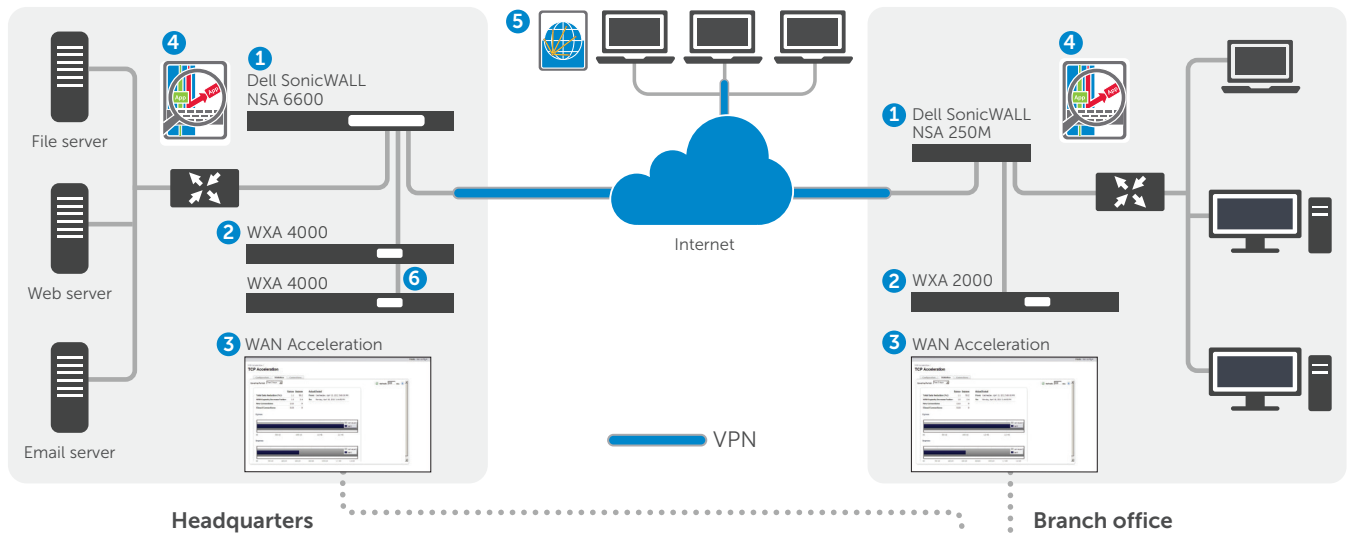
Improve response time while decreasing the amount of data transferred when downloading or accessing files from a shared drive, using **Windows File Sharing (WFS) acceleration**.

Increase browser response time while decreasing bandwidth using HTTP (Web) caching.

Get better insight into performance gains from WAN acceleration with real-time visualization.

WAN Acceleration client software allows traffic initiated from remote Windows PCs or laptops running NetExtender to be accelerated.

Dell SonicWALL WXA Series deployment scenario



1 Dell SonicWALL Next-Generation Firewall appliances provide site-to-site VPN connectivity between a remote or branch office and the main corporate headquarters.

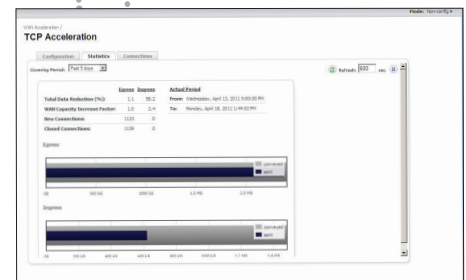
2 Dell SonicWALL WXA appliances improve WAN performance by decreasing latency, while reducing the amount of data traversing through the VPN.

3 Visualization shows the performance gains and benefits of introducing WAN acceleration into the network.

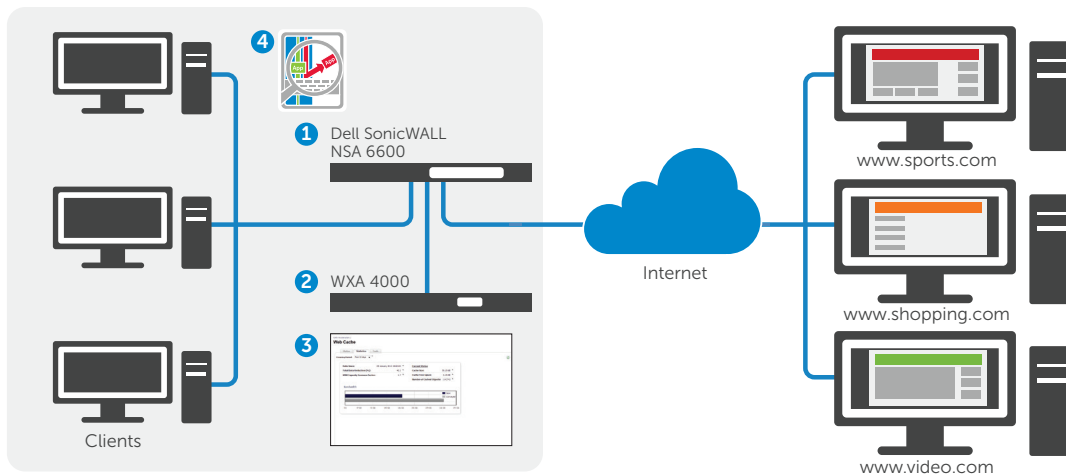
4 Dell SonicWALL Application Intelligence and Control prioritizes and controls application traffic.

5 Dell SonicWALL NetExtender using WAN Acceleration client software.

6 Cluster several Dell SonicWALL WXA appliances together to increase scalability.



HTTP (Web) caching deployment scenario



1 Dell SonicWALL Next-Generation Firewall appliances provides Deep Packet Inspection scanning for malware and intrusions.

2 Dell SonicWALL WXA appliance provides Web (HTTP) caching to decrease bandwidth utilization and improves browser response times.

3 Visualization shows the performance gains and benefits of introducing WAN acceleration into the network.

4 Dell SonicWALL Application Intelligence and Control prioritizes and controls application traffic.

Specifications

	WXA 500 Software	WXA 2000	WXA 4000	WXA 5000 Virtual Appliance	WXA 6000 Software
Platform	Software ⁵	Hardware appliance	Hardware appliance	Virtual appliance (VMware)	Software ⁵
Maximum users ¹	20	120	240	360	2,000
Maximum connections	100	600	1,200	1,800 ³	10,000
Maximum web caching connections	100	600	1,200	1,800 ³	10,000
Included/maximum concurrent WXA client licenses ⁴	2/20	2/50	2/125	2/125	2/125
Byte caching	Yes				
TCP/file compression	Yes				
Management	Requires SonicOS 5.8.1 or later				
Clustering ⁶	—	Yes	Yes	Yes	Yes
CIFS/SMB acceleration	Yes ²	Yes			
Signed SMB support	Yes				
WFS/TCP visualization	Yes				
SNMP	Yes				
Syslog	Yes				
Operating system	Hardened Dell SonicWALL Linux OS				
Rack-mount chassis	—	1 RU			—
CPU	—	Intel 2.0GHz	Intel Dual Core 2.0GHz	—	—
RAM	—	2 GB	4 GB	—	—
Hard drive	—	250 GB	2x250 GB	—	—
Redundant Disk Array (RAID)	—	—	RAID 1	—	—
Dimensions	—	17.0 x 16.4 x 1.7 in/43.18 x 41.59 x 4.44 cm		—	—
Weight	—	16 lbs/7.26 kg		—	—
WEEE weight	—	16 lbs/7.37 kg		—	—
Power consumption (watts)	—	86	101	—	—
BTUs	—	293	344	—	—
MTBF (years)	—	14.27		—	—

	WXA 500 Software only	WXA 6000 Software only
Dell hardware	Dell Inspiron 3847, Dell XPS 8700	Dell PowerEdge R320 Server

WXA 5000 Virtual Appliance only	
Hypervisor	ESX and ESXi (5.0 and newer)
Operating system installed	Hardened SonicLinux
Minimum CPU	2 x 1.6 GHz
Allocated memory	4 GB
Applied disk size	250 GB
VMware Hardware Compatibility Guide	http://vmware.com/resources/compatibility/search.php

- ¹ Maximum users may vary depending on the number of connections being generated per user.
- ² CIFS/SMB acceleration is available only when the WXA software image is installed on the supplied Dell hardware.
- ³ The max number of connections is dependent on the hardware specifications and may vary depending on the hardware configuration. The specifications provided are the minimum requirements to run the WXA Virtual Appliance.
- ⁴ NetExtender is required in order to use the WXA client software. Please refer to the WXA release notes for supported operating systems.
- ⁵ The WXA 500 and 6000 software can be downloaded from www.mysonicwall.com and requires specific Dell hardware in order to operate.
- ⁶ Requires SonicOS 6.2 or higher.



Dell SonicWALL WXA 500 Software with Software Subscription and Dynamic Support 24x7 (1-year) **01-SSC-9438**



Dell SonicWALL WXA 2000 with Dynamic Support 24x7 (1-year) **01-SSC-9440**



Dell SonicWALL WXA 4000 with Dynamic Support 24x7 (1-year) **01-SSC-9442**



Dell SonicWALL WXA 5000 with Software Subscription and Dynamic Support 24x7 (1-year) **01-SSC-9444**



SonicWALL WXA 6000 Software including 1 Year Software Subscription and Dynamic Support 24x7 **01-SSC-9078**

Software and Support Renewals

SonicWALL WXA 6000 Software Subscription and Dynamic Support 24x7 (1-Year) **01-SSC-9079**

Dell SonicWALL WXA 5000 Virtual Appliance including Software Subscription and Dynamic Support 24x7 (1-year)* **01-SSC-9455**

Dell SonicWALL Dynamic Support 24x7 for WXA 4000 (1-year)* **01-SSC-9452**

Dell SonicWALL Dynamic Support 24x7 for WXA 2000 (1-year)* **01-SSC-9449**

Dell SonicWALL WXA 500 Software Subscription and Dynamic Support 24x7 (1-year)* **01-SSC-9446**

*Two and three-year options are also available.

For more information on Dell SonicWALL solutions, please visit www.sonicwall.com.

For more information

Dell SonicWALL
2001 Logic Drive
San Jose, CA 95124
www.sonicwall.com
T +1 408.745.9600
F +1 408.745.9300

Dell Software

5 Polaris Way, Aliso Viejo, CA 92656 | www.dell.com
If you are located outside North America, you can find local office information on our Web site.

© 2015 Dell, Inc. ALL RIGHTS RESERVED. Dell, Dell Software, the Dell Software logo and products—are registered trademarks of Dell, Inc. in the U.S.A. and/or other countries. All other trademarks and registered trademarks are property of their respective owners.
Datasheet-SonicWALL-WXASeries-US-VG-26934

