

# Analyzer

Application traffic analytics, visualization and reporting tool

When employees use web applications such as web mail, Facebook, instant messaging and BitTorrent for non-work-related activity, bandwidth utilization spikes, productivity plummets and threats to the network begin to emerge. IT needs a solution to strengthen security awareness, optimize network utilization, intelligently manage applications and cost effectively provide troubleshooting and forensics analysis. Most third-party application traffic analytics and reporting products do not achieve these objectives because they do not provide full network visibility and they can be complex to use.

By contrast, Dell™ SonicWALL™ Analyzer does meet these objectives. Analyzer is a web-based traffic analytics and reporting tool that is easy to use and provides real-time and historical insight into network health, performance and security. Analyzer supports Dell SonicWALL firewalls, backup and recovery products and secure remote access solutions. Organizations of all sizes benefit from enhanced employee productivity, optimized network bandwidth utilization and increased security awareness. Dell SonicWALL is the *only* firewall vendor that provides a complete solution by combining off-box application traffic analytics with granular data generated by Dell SonicWALL firewalls.



## Benefits:

- Comprehensive graphical reports enable visibility and analysis of threats and activities
- Next-generation syslog reporting streamlines data summarization
- Powerful insights into Secure Remote Access and Continuous Data Protection appliance health and behavior
- Universal scheduled reports speed in-depth reporting
- At-a-glance reporting facilitates quick analysis
- Compliance reporting makes report generation easy
- Multi-threat reporting provides instant information on threats and attacks
- User-based reporting tracks activity across the entire network
- Ubiquitous access simplifies reporting for any location
- New attack intelligence enables granular reporting on specific attacks

## Features

### **Comprehensive graphical reports** —

Provide visibility into firewall threats, bandwidth usage, employee productivity, suspicious network activity and application traffic analysis.

### **Next-generation syslog reporting** —

Revolutionary architecture streamlines data summarization, allowing for near real-time reporting of incoming syslog messages. Direct access to the underlying raw data further facilitates extensive granular capabilities and highly customizable reporting.

### **Dell SonicWALL Secure Remote Access and Continuous Data**

**Protection reporting** — Leverages next-generation syslog data to provide powerful insight into appliance health and behavior.

**Universal scheduled reports** — Provide a single entry point for all scheduled reports. One report can combine charts and tables for multiple units. Reports can be scheduled and sent out in various formats to one or more email addresses.

**At-a-glance reporting** — Offers customizable views to illustrate multiple summary reports on a single page. Users can easily navigate through vital network metrics to analyze data quickly across a variety of reports.

**Compliance reporting** — Enables administrators to generate reports that fulfill compliance requirements on an ad-hoc and scheduled basis for specific regulatory mandates.

**Multi-threat reporting** — Collects information on thwarted attacks, providing instant access to threat activities detected by Dell SonicWALL firewalls using the Dell SonicWALL Gateway Anti-Virus, Anti-Spyware, Intrusion Prevention and Application Intelligence and Control Service.

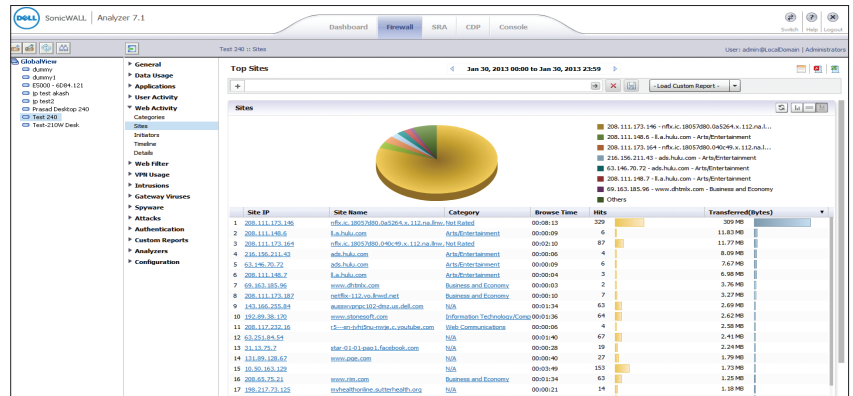
**User-based reporting** — Tracks individual user activities locally or on remote network sites. Provides greater insight into traffic usage across the entire network and, more specifically, application usage, websites visited, backup activity and VPN connections per user.

**Ubiquitous access** — Simplifies reporting to provide administrators with analysis of any location using only a standard web browser.

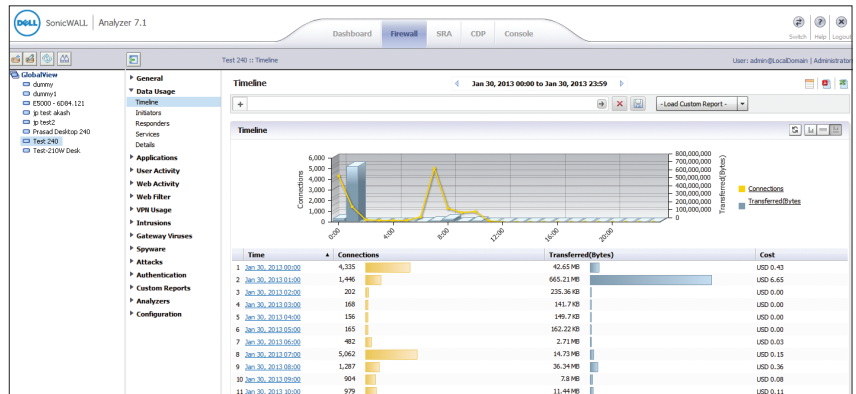
**New attack intelligence** — Offers granular reporting on specific types of attacks, intrusion attempts and the source address of the attack to enable administrators to react quickly to incoming threats.

## Dell SonicWALL Analyzer

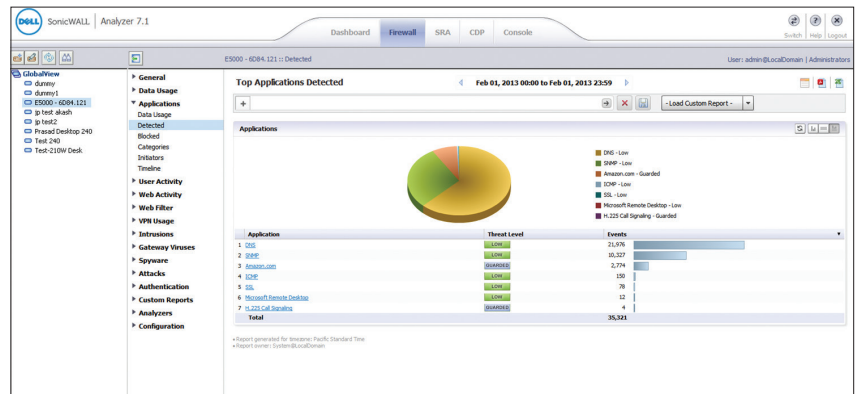
Easily view traffic usage statistics such as top websites visited. Drill-down reporting allows for sorting of data according to granular details, such as the site name, IP address, website category and number of connections attempted.



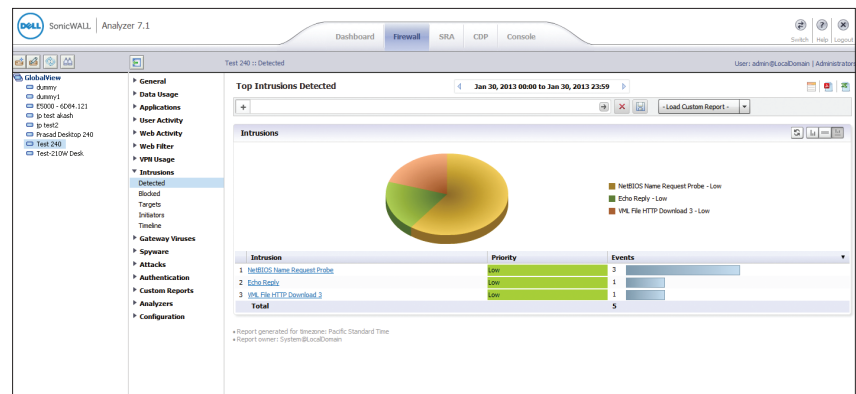
Intuitive graphical reports simplify monitoring of Dell SonicWALL appliances and make it easy to identify traffic anomalies based on usage data for a specific timeline, initiator, responder or service. Export reports to a Microsoft® Excel® spreadsheet, PDF file or directly to a printer.



Built-in granular reporting allows for traffic usage data to be displayed according to top applications on the network. Easily identify the top applications detected or blocked according to category, timeline or initiator.



Threat management comes standard with Analyzer; easily view the top threats to the network by target, initiator or threat type. Comprehensive threat reporting, such as Gateway Anti-Virus, Intrusion Prevention and Anti-Spyware, are all included.



## System requirements

### Operating system

Microsoft® Windows® Server 2003 64 bit (SP2)  
Windows Server 2008 SBS 64 bit (SP2)  
Windows Server 2008 Standard 64 bit (SP1)  
Windows 7 Pro 64 bit (SP1)

In all instances Dell SonicWALL Analyzer is running as a 32 bit application.

### Hardware for Analyzer server

Minimum Requirements: Single Core 3 GHz x86 Processor, 4 GB RAM, 100 GB HDD

### Java

Java SE Runtime Environment 1.6 or later

### Internet browsers

Microsoft® Internet Explorer 8.0 or higher  
Mozilla Firefox 6.0 or higher  
Google Chrome 13.0 and above  
Supported only on Microsoft Windows platforms

### Virtual appliance

Hypervisor: VMware® ESX and ESXi  
Operation System Installed: Hardened SonicLinux  
Appliance Size: 250 GB, 950 GB  
Recommended RAM: 8 GB (4 GB minimum)  
VMware Compatibility Guide:  
[www.vmware.com/resources/compatibility/search.php](http://www.vmware.com/resources/compatibility/search.php)

### Supported Dell SonicWALL appliances

Dell SonicWALL Next-Generation Firewalls: SuperMassive™ Series, E-Class Network Security Appliance (NSA) Series, NSA Series, TZ Series, and PRO Series<sup>1</sup>

Dell SonicWALL Continuous Data Protection Series

Dell SonicWALL Content Security Manager (CSM) Series

Dell SonicWALL E-Class and SMB Secure Remote Access (SRA) Series<sup>2</sup>

### Supported Dell SonicWALL firmware

Dell SonicWALL E-Class NSA and NSA Series: SonicOS Enhanced 5.0 or higher

Dell SonicWALL PRO Series: SonicOS Enhanced 3.2 or higher

Dell SonicWALL TZ Series: SonicOS Standard 3.1 or higher, and Enhanced 3.2 or higher

Dell SonicWALL CSM Series: Dell SonicWALL 2.0 or higher

Dell SonicWALL SRA for SMB Series: Firmware 2.0 or higher

Dell SonicWALL E-Class SRA Series: Firmware 9.0 or higher

Dell SonicWALL CDP 5.1 or higher

### IPv6 Support

GMS 7.2 supports IP version 6 (IPv6) management and configuration of firewalls, Domain Name System (DNS) and Neighbor Discovery Protocol (NDP).

<sup>1</sup> Legacy Dell SonicWALL XPRS/XPRS2, Dell SonicWALL SOHO2, Dell SonicWALL Tele2 and Dell SonicWALL Pro/Pro-VX models are not supported.

<sup>2</sup> Only newer Dell SonicWALL Aventura E-Class SRA appliances using 12 character hexadecimal serial numbers.



### Dell SonicWALL Analyzer

Analyzer for TZ Series  
01-SSC-3378  
Analyzer for NSA 240, NSA 2400  
01-SSC-3379  
Analyzer for NSA 3500  
01-SSC-3380  
Analyzer for NSA 4500  
01-SSC-3381  
Analyzer for E-Class NSA and SuperMassive E10000 Series  
01-SSC-3382  
Analyzer for CDP 210  
01-SSC-3383  
Analyzer for CDP 220  
01-SSC-3384  
Analyzer for CDP 5040B  
01-SSC-3385  
Analyzer for CDP 6080B  
01-SSC-3386  
Analyzer for SRA 1200  
01-SSC-3387  
Analyzer for SRA 4200  
01-SSC-3388  
Analyzer for E-Class SRA Series  
01-SSC-3389

### For more information

Dell SonicWALL  
2001 Logic Drive  
San Jose, CA 95124  
[www.sonicwall.com](http://www.sonicwall.com)  
T +1 408.745.9600  
F +1 408.745.9300

### Dell Software

5 Polaris Way, Aliso Viejo, CA 92656 | [www.dell.com](http://www.dell.com)  
If you are located outside North America, you can find local office information on our Web site.

