

M/V Subsea Responder I

220' DP2 DSV



THE SUBSEA RESPONDER I is a DP2 Saturation Diving Support Vessel, also capable of inspection, maintenance and repair (IMR) work.

► CLASSIFICATION

American Bureau of Shipping
A1, AMS, DPS-2
U.S. Flag

Builder	Bender Shipyard
Year Built	1998
Major Refit	2008 and 2011
Port of Registry	Port Arthur, Texas, USA

► DECK EQUIPMENT

Subsea Crane	1 TTS Knuckle Boom Crane, Active Heave Compensation System 38 tons @ 12 m radius for water depth of 2,800 m
Anchor Windlass	1 x McElroy Machine MDW 150/OSV30E Double Anchor Windlass
Anchor Chain	2 x 1710 ft x 1-1/2 in (diameter)
Anchor (Bow)	2 x 3473 lbs High Holding Power LWT

► MEASUREMENT

Length Overall	217.0 ft
Breadth Moulded	54.0 ft
Depth Moulded	20.0 ft
Draft (Max)	15.5 ft

► TONNAGE

GRT	2032 T
NRT	609 T

► MANEUVERING & PROPULSION SYSTEM

Main Engine	2 x EMD 16-645-E6 1950 HP each Total
BHP	3,900 BHP
Z Drive Units	2 x Kamewa Aquamaster 2001
Bow Thruster	2 x Kamewa Aquamaster TT 1650

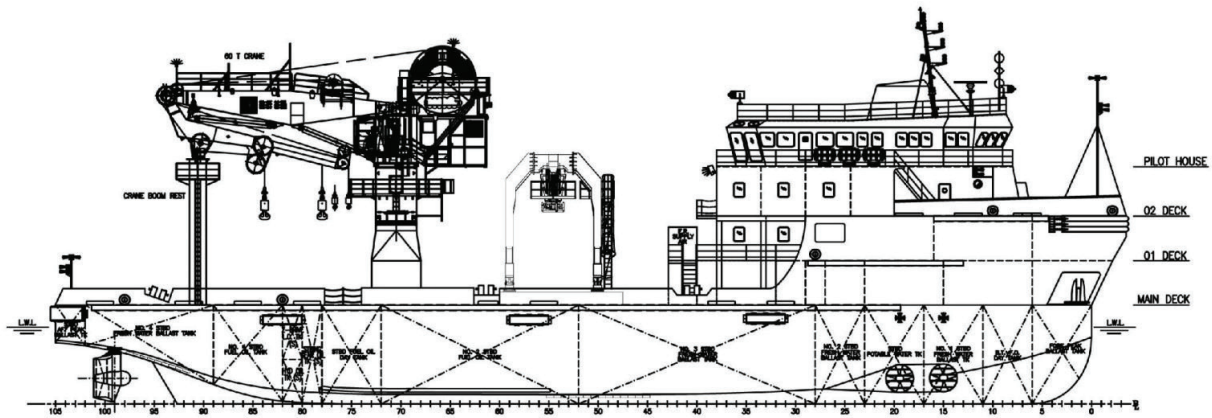
► DYNAMIC POSITIONING

DP-2 System	Wartsila NMS6000
Sonardyne Ranger2	USBL tracking system

► ELECTRIC POWER GENERATION

Main Generator	3 x Detroit Diesel rated 250 KW / 440 V / 60 Hz / 3 Ph 1 x CAT 3508B 910 KW / 440 V / 60 Hz / 3 Ph
Emergency Generator	1 x Detroit Diesel 75 KW / 480 V / 60 Hz / 3 Ph

M/V Subsea Responder I



► CARGO DECK

Deck Area	2,771.2 ft ²
Deck Cargo Capacity	400 T

► NAVIGATION & COMMUNICATION EQUIPMENT

GMDSS (Area 3)	SE 170
VHF DSC	2 x Omni GX2400
MF/HF SSB	1 x SEA Model 2354W / 1635 tuner
EPIRB	1 x Alden 406 Mhz
SART	2 x McMurdo
Navtex Receiver	1 x Alden Nav 5
Portable GMDSS VHF	3 x ACR model 276
Inmarsat	1 x Timble Galaxy Centinal
Radar	1 x Furuno FR2115 1 x Furuno 1442 Mark Z
Gyrocompass	3 x TSS Meridian
Magnetic Compass	1 x Cassens & Plath
Echo Sounder	1 x Sitex CUS 106L MK2
Speed Log	Fitted
Anemometer	Fitted
AIS	1 x Simrad A170

► STORAGE CAPACITY

Fuel Oil	235,255 gallons
Potable Water	340,000 gallons
SW Ballast	32,229 gallons
FW Ballast	397,668 gallons

► ACCOMMODATION

Berth/Cabin	3 x 1 man 1 x 2 men 13 x 4 men
Total	57 men

► SAFETY EQUIPMENT

Life Raft	8 x Life Rafts
Rescue Boat	1 x 6 persons
Davit	Ferri, SWL: 2 tons



This vessel specification is given in good faith and assumed to be accurate at the time of print. Owners will not be liable for errors, omissions or misprints published. Owners reserve the right to amend this specification without notification.