

Cable
UTP Cables
NEXTSPEED® Category 6 UTP Cable

HUBBELL

Features

- Sweep Tested from 1-550 MHz
- Guaranteed Headroom Over TIA and ISO Category 6
- Reverse Sequential Numbering
- Backward Compatible to Category 5e, 5 and 3

Ordering Information

Description	Color	Catalog Number	UPC Number
NEXTSPEED® Category 6, 4-Pair, UTP Cable, Plenum, Reelex	Yellow	C6RPY	662620201443

Listings

ANSI/TIA/EIA-568-C.2 (Category 6 Component)
 UL Listed and Tested
 NEC Article 800 Compliant
 UL Verified Performance

Specifications

Wire	23 AWG Bare Solid Copper
Primary Insulation	CMP: FEP
Primary Insulation	CMR: Polyolefin
Cabling	4 Unshielded Twisted Pairs
Outer Jacket	Low Smoke PVC
Inner Jacket	PVC

Performance

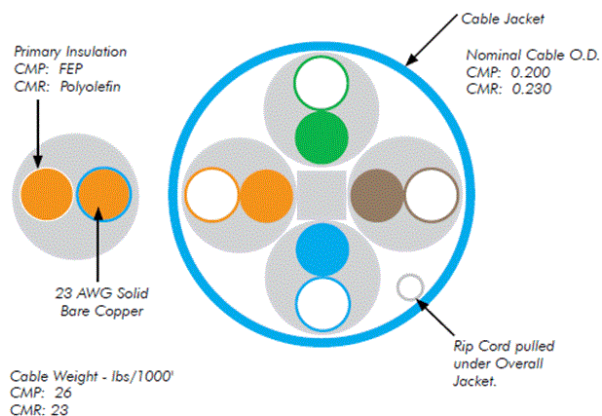
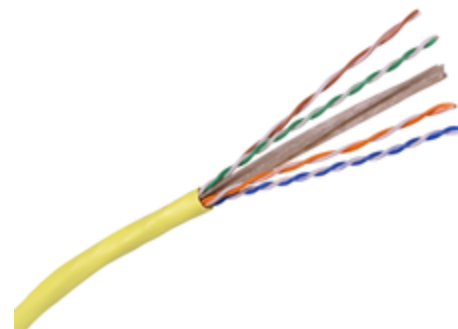
Verifications	IEEE 802.3af (PoE)
---------------	--------------------

Applications

Data Centers: Multi Gigabit Between Devices
 PoE Applications
 Bandwidth Intense Processing

Accessories

NEXTSPEED Jacks, Category 6	HXJ6Y
NEXTSPEED Patch Panel, Category 6	P6Exx (xx=Ports)
NEXTSPEED Patch Cords, Category 6	PCXY* (*=Standard Length)



TRANSMISSION SPECIFICATIONS - Worst Case									
TIA/EIA-568-B.2-1 Category 6 Compliant; ISO/IEC 11801, 2nd ed. Category 6 Compliant									
Freq. (MHz)	Ins. loss (dB/100m)	NEXT loss (dB)	PSNEXT loss (dB)	ACR (dB)	PSACR (dB)	ELFEXT (dB)	PSELFEXT (dB)	Return Loss (dB)	
1	2.1	82.5	80.5	80.5	78.5	76.0	73.0	20.2	
4	3.8	73.5	71.5	69.8	67.8	64.0	61.0	24.2	
8	5.3	69.0	67.0	63.8	61.8	57.9	54.9	26.7	
10	5.9	67.5	65.5	61.7	59.7	56.0	53.0	25.2	
16	7.4	64.4	62.4	57.1	55.1	51.9	48.9	25.2	
31.25	10.5	60.1	58.1	49.7	47.7	46.1	43.1	24.8	
62.5	15.0	55.6	53.6	40.6	38.6	40.1	37.1	22.7	
100	19.3	52.5	50.5	33.3	31.3	36.0	33.0	22.3	
155	24.5	49.6	47.6	25.2	23.2	32.2	29.2	20.9	
200	28.2	48.0	46.0	19.9	17.9	30.0	27.0	20.2	
250	32.0	46.5	44.5	14.7	12.7	28.0	25.0	19.8	
300*	35.4	45.3	43.3	-	-	26.5	23.5	19.5	
350*	38.7	44.3	42.3	-	-	25.1	22.1	19.2	
400*	41.8	43.5	41.5	-	-	24.0	21.0	18.7	
500*	45.6	42.0	41.0	-	-	22.0	19.0	18.2	
550*	47.6	41.3	40.4	-	-	21.1	18.8	18.1	
600*	49.0	40.6	39.1	-	-	20.7	18.4	17.8	
650*	49.5	40.0	38.6	-	-	20.1	18.1	17.5	
750*	56.2	39.1	37.9	-	-	19.5	17.7	17.1	

* Frequencies beyond the TIA and ISO requirements are for information only.

