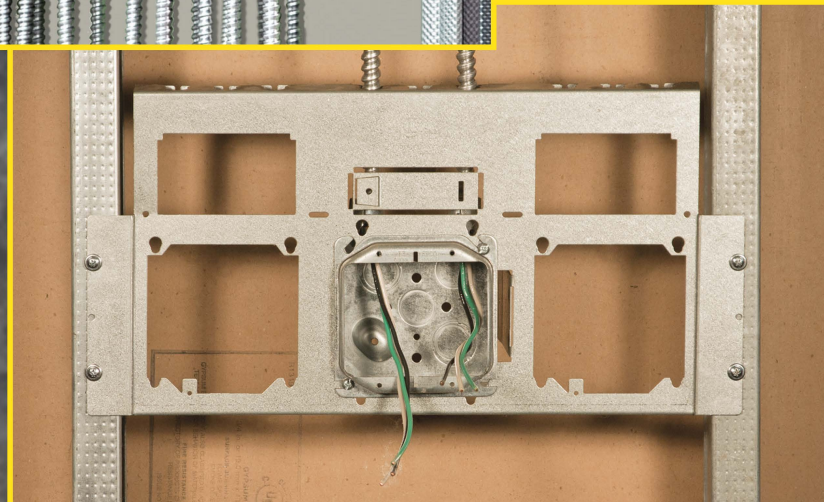
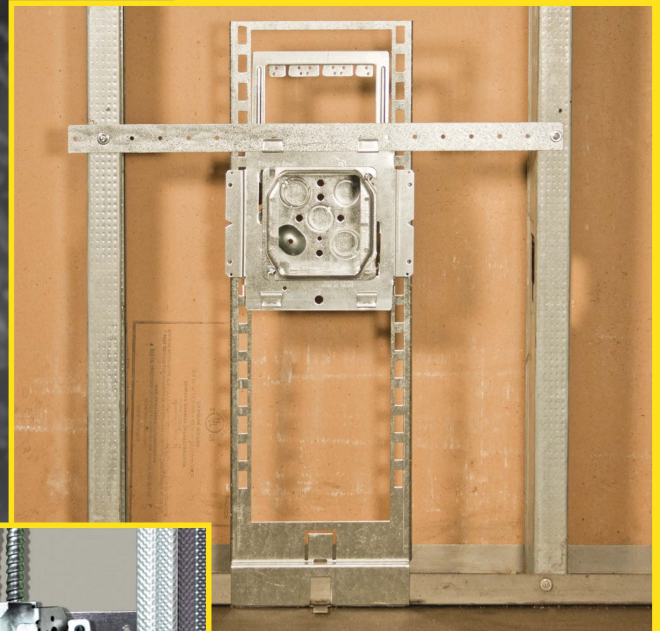
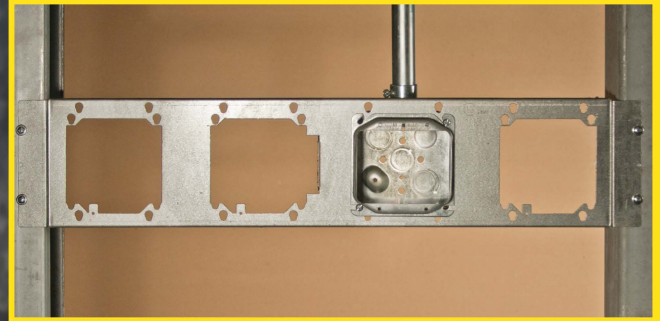




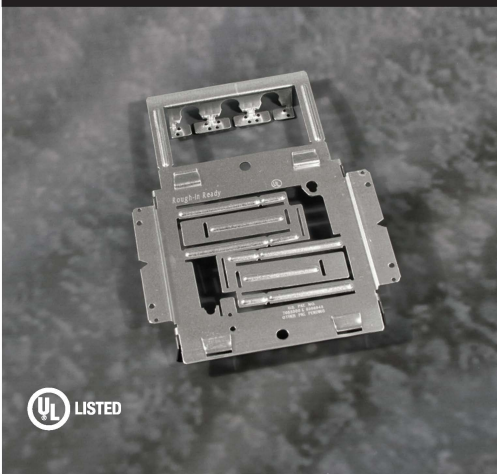
RACO

Rough-in Ready

**Box Positioning
Bracket System
For Pre-Fabrication
and Manufactured
Wiring Systems**



SBRNRRAC - 30 Pc. Per Ctn.



Single Box Mounting Bracket For MC/BX Wiring Systems

APPLICATION The Rough-In Ready® SBRNRRAC bracket is used to position a single 4" square junction box between two studs (with optional spanner bars sold separately) or on the side of a stud when running MC or BX cable.

FEATURES

- Face mount stud brackets allows bracket/box to mount directly to any type of stud - metal (open or closed sides) or wood
- Integrated top cable support manages cables entering assembly per current NEC requirements
- Easy to use, integrated locking tabs hold cable securely in place - simply snap cable in, no additional hardware or cable support required to hold cables in place
- Cable holders will accept up to 3 cables - cable range ranges from 12-2MC to 10-4 MC
- Stud bracket features centering hole for easily locating bracket to correct height from center of device to floor
- Left/right bracket design allows for shop prefabrication without worrying about side of stud placement on jobsite

- Built in spanner bar tabs accommodate accessory spanner bars to position bracket/box between studs. Design allows for spanner bars to be added on site reducing risk of transportation damage
- Unique box locking tab secures box to bracket for transportation to jobsite. Tab design allows mud ring to be removed from box without disengaging from bracket assembly
- Built in, flip-out far side supports will accommodate a 2-1/2", 3-1/2", and 3-5/8" steel or wood stud depths. For 5-1/2" or 6" stud depths, simply flip-out far side extensions built in the center of far side support
- Heavy 20 gauge .038" gauge pre-galvanized steel construction resists flexing in wall cavity as well as durability on jobsite
- Covered by patent #'s: US 7,053,300B2 and US 6,996,943B2

ACCESSORIES

- KS1RAC kick plate for locating box from floor
- SP1RAC and SP2RAC between stud spanner bars

Catalog No.	Ctn. Qty.	UPC-A
SBRNRRAC	30	050169970010

KS1RAC 20 Pc. Per Carton



Floor Mount Kick Stand Adjustable

APPLICATION

Rough-In Ready® KS1RAC is designed to be used in conjunction with either the S1CRAC or SBRNRRAC bracket systems. The KS1RAC gives the installer the flexibility to adjust the box assembly at various heights from floor 7" to 18" at 1" increments.

FEATURES

- SBRNRRAC or S1CRAC single box support brackets lock into KS1RAC using built in locator tabs
- Adjust height by locating desired opening on KS1RAC kick stand (Ranges from 7" to 18" in height)
- Wrap under lip design and securing lock tab allows for KS1RAC to be positioned under stud for hands free installation of bracket/box assembly
- KS1RAC wall assembly can be easily located behind closed wall with built in locator tab that can be seen once drywall is in place
- Heavy 20 gauge .038" gauge pre-galvanized steel construction for secure and rigid support of boxes in wall cavity
- UL Listed as part of the Rough-in Ready system

Catalog No.	Ctn. Qty.	UPC-A
KS1RAC	20	050169970119

SP1RAC or SP2RAC 30 Pc. Per Carton



Between Stud Spanner Bars

APPLICATION

Rough-In Ready® spanner bars, SP1RAC for 16" spans and SP2RAC for 24" spans, work with both the SBRNRRAC and S1CRAC bracket systems. Spanner bars provide a means of support between two metal or wood studs. Bars can be used in many mechanical support applications.

FEATURES

- 1" high profile, 1/8" mounting holes, on 1" centers
- Heavy 20 gauge .038" gauge pre-galvanized steel construction for secure and rigid support of boxes in wall cavity
- Hardware not included
- UL listed as part of the Rough-in Ready system

Catalog No.	Ctn. Qty.	UPC-A
SP1RAC	30	050169970096
SP2RAC	30	050169970102

CS1RAC and CS2RAC
36 Pc. Per Ctn., 40 Pc. Per Ctn.



UL LISTED

MC/BX Cable Holder

16" - 10 Cable Positions and 24" - 16 Cable Positions

APPLICATION

The Rough-In Ready® CS1RAC and CS2RAC are used to organize runs of MC or BX cables with spacing for NEC requirements that eliminates need for derating. The flexibility of CSRAC series allows for multiple mounting applications.

FEATURES

- CS1RAC and CS2RAC cable holders can be mounted in multiple configurations – wall/surface mounted, hung by 1/4" all threaded rod, top of wall mounted or deck mounted
- Easy to use, integrated locking tabs hold cable securely in place – simply snap cable in, no additional hardware required to hold cables in place
- Cable holders will accept cable range ranges from 12-2MC to 10-4 MC
- CS1RAC = will accept up to 10 MC cables, CS2RAC = will accept up to 16 MC cables
- Heavy 20 gauge .038" gauge pre-galvanized steel construction for secure and rigid support
- Covered by patent #'s: US 6,996,943B2

Catalog No.	Ctn. Qty.	UPC-A
CS1RAC	36	050169970027
CS2RAC	40	050169970034

S1CRAC - 12 Pc. Per Carton



UL LISTED

Single Box Mounting Bracket

For Conduit Wiring Systems

APPLICATION

The Rough-In Ready® S1CRAC bracket is used to position a single 4" square or 4-11/16" square junction box between two studs (with optional spanner bars – sold separately) or on the side of a stud when running conduit.

FEATURES

- Face mount stud brackets allows bracket/box to mount directly to any stud – metal (open or closed sides) or wood
- Stud bracket features centering hole for easy locating of bracket to correct height from center of device to floor
- Left/right bracket design allows for shop prefabrication without worrying about which side of stud placement on jobsite
- Built in spanner bar tabs accommodate accessory spanner bars to position bracket/box between studs. Design allows for spanner bars to be added on site reducing risk of transportation damage

- Unique box locking tab secures box to bracket for transportation to jobsite. Tab design allows mud ring to be removed from box without disengaging from bracket assembly
- Built in, flip out far side supports will accommodate a 2-1/2", 3-1/2", and 3-5/8" steel or wood stud depths
- Heavy 20 gauge .038" pre-galvanized steel construction resists flexing in wall cavity as well as durability on jobsite

ACCESSORIES

- SP1RAC and SP2RAC between stud spanner bars
- KS1RAC kick plate for locating box from floor
- UL Listed as part of the Rough-in Ready system

Catalog No.	Ctn. Qty.	UPC-A
S1CRAC	12	050169970003

DHRAC
10 Pc. Per Carton



RI

Universal Roof Deck Hanger

APPLICATION

The Rough-In Ready® DHRAC provides means of static load support from roof decking. The DHRAC can be used to mount luminaries that need to be suspended from roof decking.

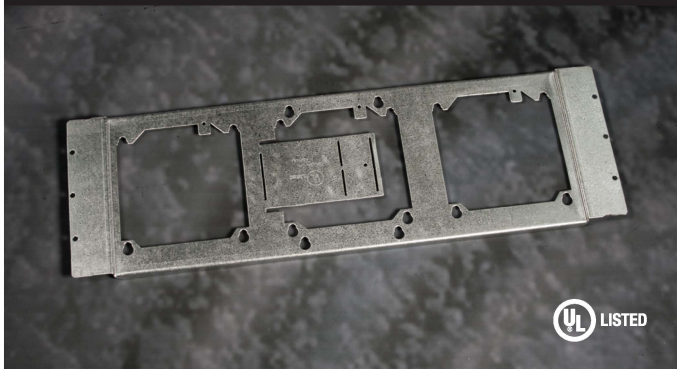
FEATURES

- Easily installs to roof decking with use of 4, #8 or larger sheet metal screws (not included)
- Large 1-3/8" hole opening accommodates a variety of chains, cables, hooks, etc.
- Heavy 20 gauge .038" gauge pre-galvanized steel construction for secure and rigid support of boxes in wall cavity

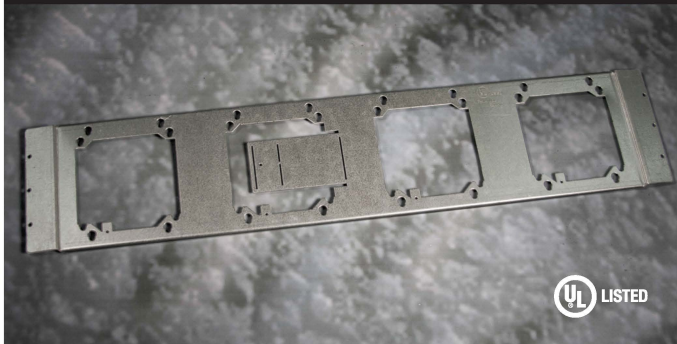
NOTE: Max. static support load for deck thickness of 20 or 22 gauge using min. 4, #8 or larger sheet metal screws - 100 lbs.

Catalog No.	Ctn. Qty.	UPC-A
DHRAC	10	050169970089

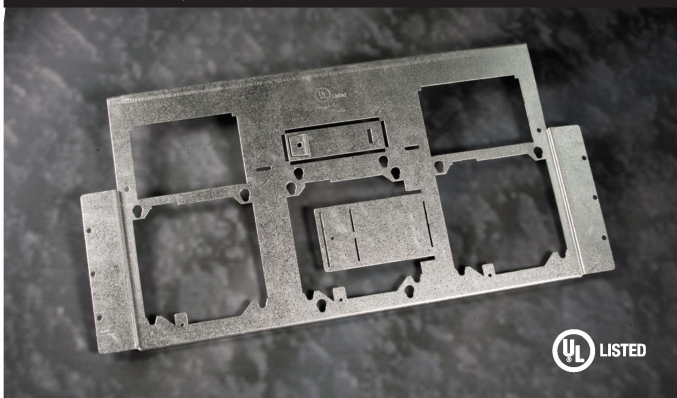
3PCRAC (16") - 30 Pc. Per Carton



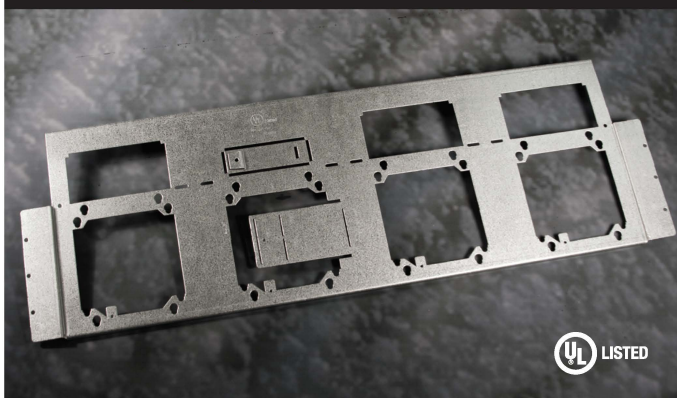
4PCRAC (24") - 20 Pc. Per Carton



3PRAC (16") - 14 Pc. Per Carton



4PRAC (24") - 10 Pc. Per Carton



Support Mounting Brackets

For Between Studs/Non-adjustable

APPLICATION

The Rough-In Ready® 3PCRAC allow two 4" and one 4-11/16" (In Center) square boxes to be securely positioned between two studs. The Rough-In Ready 4PCRAC brackets allow multiple 4" and one 4-11/16" square boxes to be securely positioned between two studs.

FEATURES

- Face mount stud brackets allows bracket/box to mount directly to any type of stud – metal (open or closed sides) or wood
- 3PCRAC = supports up to 3, square boxes & mud rings. 4PCRAC = supports up to 4, square boxes & mud rings
- Both brackets feature centering hole for easy locating of bracket to correct height from center of device to floor
- Unique box locking tab secures box to bracket for transportation to jobsite. Tab design allows mud ring to be removed from box without disengaging from bracket assembly
- Built-in, flip-out far side supports will accommodate a 2-1/2", 3-1/2", and 3-5/8" steel or wood stud depths.
- Heavy 20 gauge .038" gauge pre-galvanized steel construction for secure and rigid support of boxes in wall cavity

Catalog No.	Ctn. Qty.	UPC-A
3PCRAC	30	050169970041
4PCRAC	20	050169970058

Support Mounting Brackets

For Between Studs/Non-adjustable

APPLICATION

The Rough-In Ready® 3PRAC allow two 4" and one 4"-11/16" (In Center) square boxes to be securely positioned between two studs. 4PRAC brackets allow multiple 4" or 4"-11/16" square boxes to be securely positioned between two studs.

FEATURES

- Face mount stud brackets allows bracket/box to directly mounted to any type of stud – metal (open or closed sides) or wood
- 3PRAC = supports up to 3, square boxes & mud rings. 4PRAC = supports up to 4, square boxes & mud rings
- Integrated top cable support manages cables entering assembly per current NEC requirements
- Easy to use, integrated locking tabs hold cable securely in place – simply snap cable in, no additional hardware required to hold cables in place
- 3PRAC = 9 built in cable holders, 4PRAC = 12 built in cable locators
- Cable holders will accept cable range ranges from 12-2MC to 10-4 MC
- Stud bracket features centering hole for easy locating of bracket to correct height from center of device to floor
- Unique box locking tab secures box to bracket for transportation to jobsite. Tab design allows mud ring to be removed from box without disengaging from bracket assembly
- Built-in, flip-out far side supports will accommodate either 2-1/2", 3-1/2", and 3-5/8" steel or wood stud depths. For 5-1/2" or 6" stud depths, simply break-out included far side extensions and add to flip-out support with screw
- Heavy 20 gauge .038" gauge pre-galvanized steel construction for secure and rigid support of boxes in wall cavity
- Covered by patent #'s: US 7,053,300B2 and US 6,996,943B2

Catalog No.	Ctn. Qty.	UPC-A
3PRAC	14	050169970065
4PRAC	10	050169970072