



HP LaserJet Enterprise MFP M631, M632 series

The pinnacle of performance and security



The world's most secure printing¹



Maximum productivity.
High-speed performance.



More. Pages, Performance,
and Protection.

The world's most secure printing¹



Only HP enterprise printers repair themselves from attacks in real time while offering outstanding manageability. Automatically monitor threats, detect intrusions, and validate operating software while centrally managing your fleet with ease.



Always on guard

Only HP Enterprise printers offer built-in security features that are always on guard.¹

- With HP Sure Start, each device regularly checks its operating code and repairs itself from attempted hacks.
- Whitelisting checks firmware during startup to help ensure it's authentic, good code—digitally signed by HP.
- Run-time intrusion detection continually monitors activity to detect and stop attacks, then automatically reboots.

Get instant notification of potential security issues so immediate action can be taken to prevent potential attacks. This MFP works with leading Security Information and Event Management (SIEM) tools like Splunk and ArcSight.



Take security to the next level

Help protect your device with more than 250 embedded security features.² Protect information on the MFP and in transit over the network. Store data on the 256-bit encrypted HP High-Performance Secure Hard Disk.³

Add features such as card readers and more through the Hardware Integration Pocket.⁴ Equip your MFP to store and protect larger files with the optional 1 GB memory upgrade. Further safeguard data stored on the MFP—keys, passwords, certificates, and more—using the optional HP Trusted Platform Module.⁵

Easily develop, deploy, and integrate HP and third-party solutions with the HP Open Extensibility Platform. Optional HP Access Control solutions can help you reinforce security, while helping to reduce costs.



Centralise control to help build business efficiency

Centralise control of your printing environment with HP Web Jetadmin.⁶ Optional HP JetAdvantage Security Manager offers an effective, policy-based approach to help secure HP devices.⁷ Easily set security configuration policies and automatically validate settings across the fleet. For more information about security, please see Appendix A, page 16; for details about fleet management, please see Appendix B, page 19.

Simplify business printing with the industry's first SaaS (Software as a Service) portal for managing both apps and users—HP JetAdvantage On Demand boosts productivity and eliminates server and software investments from one convenient website.^{8,9} Protect confidential print jobs with HP JetAdvantage Secure Print¹⁰ or JetAdvantage Private Print.¹¹

Maximum productivity. High-speed performance.

Get the job done with an MFP equipped for high-speed performance and designed for energy efficiency. Be confident that your employees can speed through their tasks without interruption.

Keep business moving

Breeze through tasks—this MFP prints your first page from ready/sleep mode as fast as 5.4/7.9 seconds.^{12,13} Print up to 61 pages per minute (ppm),¹⁴ A4 simplex (M632 series)—with up to 85% duplex efficiency. Print on A5 paper in landscape mode at speeds up to 100 ppm (M632 series).¹⁵



Print directly from your smartphone, tablet, or notebook PC to your Wi-Fi Direct^{®16}/Bluetooth[®] Low Energy¹⁷ enabled MFP—without accessing the company network. Or choose managed mobile print solutions (HP JetAdvantage Connect or HP Access Control) for advanced management and reporting capabilities.¹⁸

Loaded for productivity

Spend less time loading paper with a 3,750-sheet maximum capacity.¹⁹ Options for this series include a 1x550 and 2,000-sheet HCI feeder, a 3x550-sheet paper feeder, or a 1x550-sheet paper feeder with a cabinet to store supplies.²⁰ The wheeled stand allows you to relocate the MFP. Standard and optional 550-sheet input trays fit a whole ream of paper and support paper sizes from A6 to 216 x 356 mm.



Equip employees to breeze through tasks using the new, intuitive interface on the 20.3 cm touchscreen. (For more information, see Appendix C, page 20.) The 3-bin stapler/stacker with job offset allows you to set up each bin for a different department or option, such as face down, fax, and copy (M631z and Flow M632z models only).

Designed to conserve

Help keep productivity up and energy use down. This efficient MFP is designed for exceptionally low energy consumption—thanks to its innovative design and specially formulated toner.²¹



Save time and money

Help cut costs with HP Auto-On/Auto-Off Technology²² and HP Instant-on Technology²³—intelligence that readies your MFP right when you need it and turns it off when you don't. Print efficiently on 60 g/m² lightweight media—designed to save energy.

More. Pages, Performance, and Protection.



Get more pages and help protect your MFP, using Original HP Toner cartridges with JetIntelligence.²⁴



More quality pages than ever before

Get the most prints for your money. Specially redesigned Original HP Toner cartridges with JetIntelligence deliver up to 64% more pages per cartridge than predecessors.²⁴ Precision black toner is engineered to deliver consistent placement of toner particles and produce sharp text, bold blacks, and crisp graphics.



Help protect your investment

Don't put your MFP—and print quality—at risk. Help retain the consistent Original HP quality you paid for with innovative, anti-fraud technology. Enable office-wide adherence to printing policies with cartridge authentication technology.



Ready to work, right away

Speed through print jobs right out of the box. This MFP is shipped with preinstalled, specially designed Original HP LaserJet toner cartridges with JetIntelligence. Auto seal removal enables simple and seamless cartridge replacement, so you can get back to business fast—without costly delays or frustrating messes.



Print uninterrupted and get more pages with optional high-yield and extra-high-yield cartridges.^{24,25} (A/X/Y: 11,000/25,000/41,000 pages²⁶)

Give workgroups the speed they need



Accelerate workflow, improve accuracy, and easily connect people throughout your organisation. Complete high-volume scan jobs fast—up to 167 ipm for the Flow models²⁷—and avoid extra steps with an MFP designed for maximum productivity.



Fast, unattended scanning

Turn stacks of paper documents into digital files. Load up to 150 pages into the automatic document feeder for fast two-sided, single-pass scanning.²⁸ Spend less time waiting with two-sided scan speeds up to 111 images per minute (ipm)²⁷ (up to 167 ipm²⁷ for the Flow models). Choose Flow models for advanced workflow features such as HP EveryPage and a pull-out keyboard.²⁹



Easily scan, copy, and fax

Easily make copies or send faxes using the scanner glass or the ADF. Scan a variety of media sizes from the ADF— from checks (68 x 147 mm) to banners (216 x 864 mm). Send scanned documents directly to email, network folders, LAN fax addresses,³⁰ or Microsoft® SharePoint®. Walk up and print from or scan to a memory device using the easy-access USB.³¹



Optional workflow solutions

With HP Embedded Capture, scanning and distributing information is as easy as pressing a button. HP Digital Sending Software leverages existing IT infrastructure and uses a common administrative utility and user interface. HP Capture and Route is scalable and makes it easy to control, track, and distribute scanned content.

Flow MFP features²⁹



HP EveryPage featuring ultrasonic multi-feed detection



Faster scan speeds



Automatic page orientation, auto-crop, and auto-tone



Pull-out keyboard



Built-in OCR



Extended-life ADF

Get to know the HP LaserJet Enterprise MFP M631 series

HP LaserJet Enterprise MFP M631z shown



Series at a glance



MFP M631dn



Flow MFP M631h

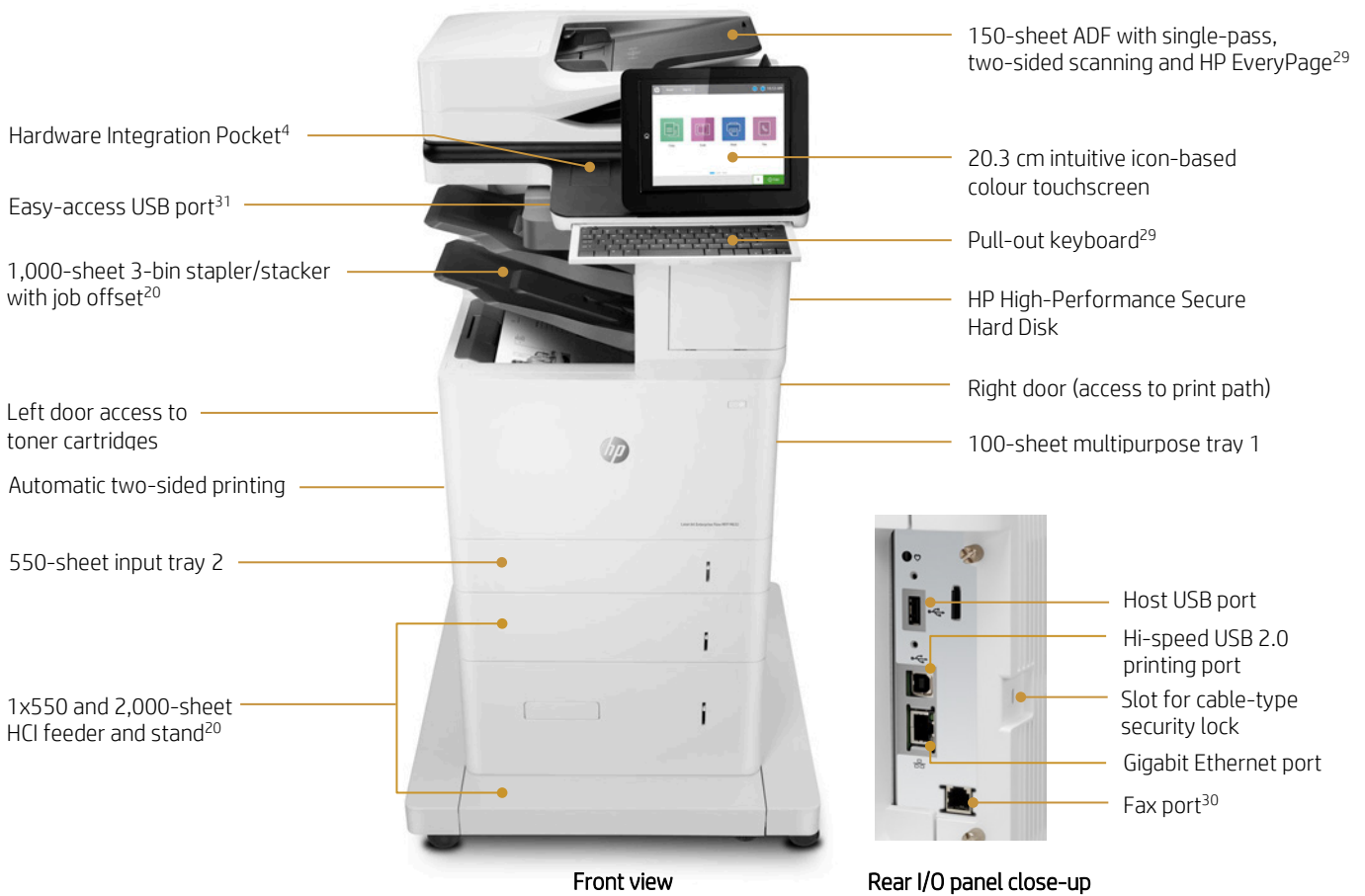


MFP M631z

	MFP M631dn	Flow MFP M631h	MFP M631z
Part number	J8J63A	J8J64A	J8J65A
Print speeds (A4) ¹⁴	Up to 52 ppm	Up to 52 ppm	Up to 52 ppm
Fax capabilities	Optional	Optional	✓
HP High-Performance Secure Hard Disk	Optional	✓	✓
100-sheet tray 1, 550-sheet tray 2	✓	✓	✓
550-sheet paper feeder ³²	Optional (up to four)	Optional (up to four)	Optional (up to one)
1x550-sheet paper feeder with stand and cabinet ³²	Optional	Optional	Not available
3x550-sheet paper feeder and stand ³²	Optional	Optional	✓
1x550 and 2,000-sheet HCl feeder and stand ³²	Optional	Optional	Not available
Envelope feeder	Optional (up to two)	Optional (up to two)	Optional (up to one)
3-bin stapler/stacker with job offset	Not available	Not available	✓
Advanced workflow features, including pull-out keyboard ²⁹	Not available	✓	Not available
Direct mobile printing	Optional wireless direct ¹⁶ /NFC ³³	Optional wireless direct ¹⁶ /NFC ³³	Embedded Wi-Fi Direct ¹⁶ / Bluetooth Low Energy ¹⁷
Wireless networking	Optional ³⁴	Optional ³⁴	Optional ³⁴

Get to know the HP LaserJet Enterprise MFP M632 series

HP LaserJet Enterprise Flow MFP M632z shown



Series at a glance



MFP M632h



MFP 632ft



Flow MFP M632z

	MFP M632h	MFP 632ft	Flow MFP M632z
Part number	J8J70A	J8J71A	J8J72A
Print speeds (A4) ¹⁴	Up to 61 ppm	Up to 61 ppm	Up to 61 ppm
Fax capabilities	Optional	✓	✓
HP High Performance Secure Hard Disk	✓	✓	✓
100-sheet tray 1, 550-sheet tray 2	✓	✓	✓
550-sheet paper feeder ³²	Optional (up to four)	Optional (up to one)	Optional (up to one)
1x550-sheet paper feeder with stand and cabinet ³²	Optional	✓	Not available
3x550-sheet paper feeder and stand ³²	Optional	Not available	Not available
1x550 and 2,000-sheet HCI feeder and stand ³²	Optional	Not available	✓
Envelope feeder	Optional (up to two)	Optional (up to one)	Optional (up to one)
3-bin stapler/stacker with job offset	Not available	Not available	✓
Advanced workflow features, including pull-out keyboard ²⁹	Not available	Not available	✓
Direct mobile printing	Optional wireless direct ¹⁶ /NFC ³³	Optional wireless direct ¹⁶ /NFC ³³	Optional wireless direct ¹⁶ /NFC ³³
Wireless networking	Optional ³⁴	Optional ³⁴	Optional ³⁴

Paper-handling accessories



550-sheet paper feeder (J8J89A)

1x550-sheet paper feeder with stand and cabinet (J8J91A)

3x550-sheet paper feeder and stand (J8J93A)

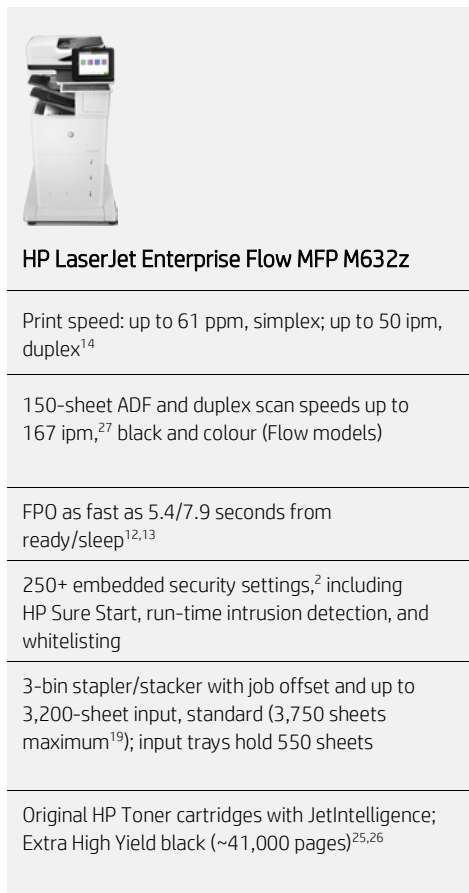
1x550 and 2,000-sheet HCI feeder and stand (J8J92A)

Envelope feeder (J8J90A)

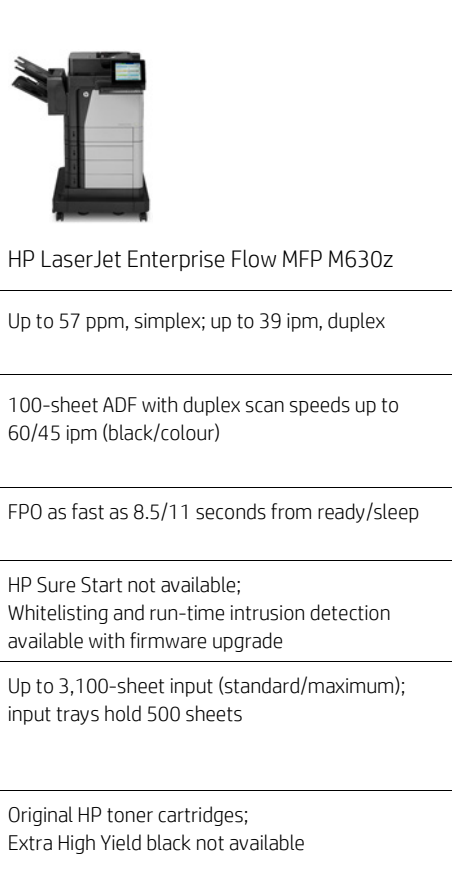
3-bin stapler/stacker

Standard		M632fht	M631z	Flow M632z		M631z, Flow M632z
Optional	Add up to one: M631z, M632fht, Flow M632z ³² Add up to four: M631dn, Flow M631h, M632h ³²	M631dn, Flow M631h, M632h ³²	M631dn, Flow M631h, M632h ³²	M631dn, Flow M631h, M632h ³²	Add up to one: M631z, M632fht, Flow M632z Add up to two: M631dn, Flow M631h, M632h	Not available

What's new



HP LaserJet Enterprise Flow MFP M632z



HP LaserJet Enterprise Flow MFP M630z

Benefits

Print speed: up to 61 ppm, simplex; up to 50 ipm, duplex¹⁴

Up to 57 ppm, simplex; up to 39 ipm, duplex

7% faster simplex, 28% faster duplex—with up to 85% duplex efficiency

150-sheet ADF and duplex scan speeds up to 167 ipm,²⁷ black and colour (Flow models)

100-sheet ADF with duplex scan speeds up to 60/45 ipm (black/colour)

Increased workflow productivity with 1.5 times more ADF capacity, and more than 3.5 times as fast two-sided colour scanning

FPO as fast as 5.4/7.9 seconds from ready/sleep^{12,13}

FPO as fast as 8.5/11 seconds from ready/sleep

Up to 36% faster FPO from ready; 28% from sleep

250+ embedded security settings,² including HP Sure Start, run-time intrusion detection, and whitelisting

HP Sure Start not available; Whitelisting and run-time intrusion detection available with firmware upgrade

Enhanced protection with key security technologies designed to thwart attackers' efforts and self-heal

3-bin stapler/stacker with job offset and up to 3,200-sheet input, standard (3,750 sheets maximum¹⁹); input trays hold 550 sheets

Up to 3,100-sheet input (standard/maximum); input trays hold 500 sheets

Improved paper-handling options and 21% higher maximum input capacity; with 550 sheet trays, you can add a whole ream before the paper runs completely out

Original HP Toner cartridges with JetIntelligence; Extra High Yield black (~41,000 pages)^{25,26}

Original HP toner cartridges; Extra High Yield black not available

Up to 64% more professional-quality pages,²⁴ peak printing performance, and anti-fraud technology

Technical specifications

	HP LaserJet Enterprise MFP M631 series	HP LaserJet Enterprise MFP M632 series
Product number	M631 dn: J8J63A Flow M631h: J8J64A M631z: J8J65A	M632h: J8J70A M632fht: J8J71A Flow M632z: J8J72A
Control panel/data entry	20.3 cm (8-inch) SVGA LCD (colour graphics), smooth gesture-enabled touchscreen; Easy-access USB; Hardware Integration Pocket ⁴	
	Flow M631h: Plus pull-out keyboard	Flow M632z: Plus pull-out keyboard
Print speed¹⁴	Simplex: Up to 52 ppm, A4 (55 ppm, letter) Duplex: Up to 43 ipm, A4 (45 ipm, letter) A5: Up to 80/6 (landscape/portrait) ¹⁵	Simplex: Up to 61 ppm, A4 (65 ppm, letter) Duplex: Up to 50 ipm, A4 (53 ipm, letter) A5: Up to 100/6 (landscape/portrait) ¹⁵
First page out	From ready: ¹² As fast as 5.4/5.3 seconds (A4/letter) (<i>all models</i>) From sleep: ¹³ Flow M631h, M632h, M632fht: as fast as 7.9/7.8 seconds (A4/letter) M631z, Flow M632z: as fast as 12.2/12.1 seconds (A4/letter)	
Print resolution	FastRes 1200 (600 x 600 x 8bpp dpi), 1200 x 1200 dpi (<i>all models</i>)	
Scanning resolution	Up to 600 dpi (<i>all models</i>)	
ADF scan speed²⁷		
Single-sided	M631 dn, M631z, M632h, M632fht: Up to 69/75 ppm (A4/letter, black and colour) Flow M631h, Flow M632z: Up to 83/90 ppm (A4/letter, black and colour)	
Two-sided	M631 dn, M631z, M632h, M632fht: Up to 111/120 ipm (A4/letter, black and colour) Flow M631h, Flow M632z: Up to 167/180 ipm (A4/letter, black and colour)	
Features		
Printing	Print preview, duplex printing, print multiple pages per sheet (2, 4, 6, 9, 16), collation, watermarks, store print jobs	
Scanning	Flatbed scanner, up to 220 x 365 mm (8.75 x 14.375 in); 150-sheet ADF with two-sided, single-pass scanning; Advanced features: Optimise text/picture, image adjustments, job build, output quality setting, selectable scan resolution 75 to 600 dpi, auto detect colour, edge erase, job notification, blank page suppression, Quick Sets Flow M631h, M632z: Plus HP EveryPage with ultrasonic multi-feed detection, Embedded Optical Character Recognition (OCR), auto-orientation, auto-crop-to-page, auto-tone	
Digital sending	Standard: Scan to email, save-to-network folder, save-to-USB drive, send to SharePoint, send to FTP, send to Internet fax, ³⁰ local address book, SMTP over SSL, send to LAN fax, ³⁰ blank page removal, edge erase, auto colour sense, auto crop to content, compact PDF, Quick Sets Optional: via HP Digital Sending Software (HP DSS): send to folder, send-to-workflow, send-to-printer, authentication, digital fax (send to LAN, Internet), OCR, local address book; Optional via HP Embedded Capture: metadata capture and validation, data transfer, scan workflow management Flow M631h, Flow M632z: Plus HP EveryPage with multi-pick detect, embedded Optical Character Recognition (OCR), auto orientation, auto crop to page, auto-tone	
File formats ³⁵	PDF, JPEG, TIFF, MTIFF, XPS, PDF/A; Scan to easy-access USB: PDF, JPEG, TIFF, MTIFF, XPS, PDF/A; Print from easy-access USB: PDF, PS, Print Ready files (.prn, .pcl, .cht) Flow M631h, Flow M632z: Plus TEXT (OCR), Unicode TEXT (OCR), RTF (OCR), Searchable PDF (OCR), Searchable PDF/A (OCR), HTML (OCR), CSV (OCR); Scan to easy access USB: TEXT (OCR), Unicode TEXT (OCR), RTF (OCR), Searchable PDF (OCR), Searchable PDF/A (OCR), HTML (OCR), CSV (OCR)	
Copying	Two-sided copying, scalability, image adjustments (darkness, contrast, background cleanup, sharpness), N-up, N or Z-ordering, content orientation, collation, booklet, job build, edge-to-edge, job storage, ID Copy, Book Copy, A-to-B Copy (different media sizes); Copy resolution: up to 600 x 600 dpi (flatbed), up to 600 x 450 dpi (ADF)	
Faxing	M631z, M632fht, Flow M632z: Fax speed: ³⁶ 33.6 kbps/3 seconds per page (A4/letter); fax forwarding, receive fax polling, broadcasting to up to 210 locations, speed dial up to 1000 numbers, each with 210 destinations, auto-fax reduction, auto-redialing, stored faxes, fax archiving, scale-to-fit, fax address book, LAN/Internet fax, fax number confirmation, holiday fax schedule Fax resolution: Standard 203 x 98 dpi, fine 203 x 196 dpi, superfine 300 x 300 dpi, best up to 300 x 300 dpi (400 x 400 dpi for received faxes only); 256 levels of grey M631 dn, Flow M631h, M632h: Fax optional	

	HP LaserJet Enterprise MFP M631 series	HP LaserJet Enterprise MFP M632 series
Processor	1.2 GHz (<i>all models</i>)	
Memory	<p>M631dn, M631z, M632h, M632fht, Standard: 2 GB system memory (1.5 GB printer and 512 MB scanner); Maximum: 2.5 GB system memory with installation of 1 GB DDR3 144-pin Accessory DIMM (only 512 MB is addressable by the system)</p> <p>Flow M631h, Flow M632z, Standard: 2.5 GB system memory (1.5 GB printer and 1 GB scanner); Maximum: 3 GB system memory with installation of 1 GB DDR3 144-pin Accessory DIMM (only 512 MB is addressable by the system)</p>	
Storage	<p>M631dn: Standard 16 GB EMMC; Optional HP High-Performance Secure Hard Disk (AES 256 hardware encryption or greater; secure erase capabilities: Secure File Erase-Temporary Job Files, Secure Erase-Job Data, Secure ATA Erase-Disk)</p> <p>All other models: Embedded HP High-Performance Secure Hard Disk, minimum 320 GB (AES 256 hardware encryption or greater; secure erase capabilities: Secure File Erase-Temporary Job Files, Secure Erase-Job Data, Secure ATA Erase-Disk)</p>	
Durability ratings		
Recommended monthly page volume ³⁷	5,000 pages to as high as 30,000 pages (<i>all models</i>)	
Recommended monthly scan volume ²⁸	<p>M631dn, M631z, M632h, M632fht: 14,250 pages to as high as 23,750 pages</p> <p>Flow M631h, Flow M632z: 26,750 pages to as high as 44,500 pages</p>	
Duty cycle ³⁸	Up to 300,000 pages (<i>all models</i>)	
Media specifications		
Input capacity	<p>M631dn, Flow M631h, M632h: Up to 650 sheets standard (up to 3,750 maximum)³²</p> <p>Tray 1: Up to 100 sheets</p> <p>Tray 2: Up to 550 sheets</p>	
	<p>M631z: Up to 2,300 sheets standard (2,850 sheets maximum)³²</p> <p>Tray 1: Up to 100 sheets</p> <p>Tray 2: Up to 550 sheets</p> <p>3x550-sheet paper feeder and stand</p>	<p>M632fht: Up to 1,200 sheets standard (1,750 sheets maximum)³²</p> <p>Tray 1: Up to 100 sheets</p> <p>Tray 2: Up to 550 sheets</p> <p>1x550 sheet paper feeder with stand and cabinet</p> <p>Flow M632z: Up to 3,200 sheets standard (3,750 sheets maximum)³²</p> <p>Tray 1: Up to 100 sheets</p> <p>Tray 2: Up to 550 sheets</p> <p>1x550 and 2,000-sheet HCl feeder and stand</p>
Output capacity	<p>M631dn, Flow M631h, M632h, M632fht: Up to 500 sheets; Up to 75 envelopes</p> <p>M631z, Flow M632z: Up to 1,000 sheets, with 3-bin stapler/stacker</p>	
Two-sided printing	Automatic (<i>all models</i>)	
Media sizes	<p>Tray 1: A4, A5, A6, RA4, B5 (JIS), B6 (JIS), 16K, 10 x 15 cm, Oficio (216 x 340 mm), postcards (JIS single and double), envelopes (DL ISO, C5, C6, B5); Letter, legal, statement, executive, Oficio (8.5 x 13 in), 3 x 5 in, 4 x 6 in, 5 x 7 in, envelopes (No. 9, No. 10, Monarch); Custom media sizes: 76 x 127 to 216 x 356 mm (3 x 5 to 8.5 x 14 in)</p> <p>Trays 2, 3, 4, and 5: A4, A5, A5-R, RA4, B5 (JIS), 16K; Letter, legal (trays 3, 4, 5 only), executive; Custom media sizes: 99 x 148 to 216 x 297 mm (3.9 x 5.8 to 8.5 x 11 in)</p> <p>HCl: A4; Letter, legal; Custom media sizes: 210 x 279 to 216 x 356 mm (8.27 x 11 to 8.5 x 14 in)</p> <p>Duplex: A4, A5, RA4, B5 (JIS), Oficio (216 x 340 mm); Letter, legal, executive</p> <p>ADF: A4, RA4, A5, A6, B5, B6 (JIS), Postcard (JIS), DPostcard (JIS); Letter, legal, Oficio, executive, statement, 16K, 4 x 6 in, 5 x 7 in, 5 x 8 in</p>	
Media weights	<p>Tray 1: Plain: 60 to 199 g/m² (16 to 53 lb); Envelopes: 60 to 90 g/m² (16 to 24 lb)</p> <p>Trays 2, 3, 4, and 5, HCl, duplex: 60 to 120 g/m² (16 to 32 lb)</p> <p>ADF: 45 to 199 g/m² (12 to 53 lb)</p>	
Media types	Paper (plain, light, bond, recycled, heavy, extra heavy, cardstock, pre-printed, pre-punched, coloured, rough, heavy rough), mono transparency, labels, letterhead, envelope, heavy envelope	
Print languages	HP PCL 6, HP PCL 5 (HP PCL 5 driver available from the Web only), HP postscript level 3 emulation, native PDF printing (v 1.7), Apple AirPrint ³⁹	
Fonts	105 internal TrueType fonts scalable in HP PCL, 92 internal scalable fonts in HP postscript level 3 emulation (Euro symbol built-in); 1 internal Unicode Font (Andale Mono WorldType); 2 Internal Windows Vista® 8 Fonts (Calibri, Cambria); Additional font solutions available via third-party flash memory cards; HP LaserJet Fonts and IPDS Emulation available at hp.com/go/laserjetfonts	

	HP LaserJet Enterprise MFP M631 series	HP LaserJet Enterprise MFP M632 series
Connectivity	2 Hi-Speed USB 2.0 Host; 1 Hi-Speed USB 2.0 Device; 1 Gigabit Ethernet 10/100/1000T network M631z, M632fht, Flow M632z: Plus fax M631 dn, Flow M631h, M632h: Optional fax	
Mobile printing	HP ePrint, ⁴⁰ AirPrint, ³⁹ Mopria-certified, Google Cloud Print™ 2.0 MFP M631z: Plus built-in Wi-Fi Direct ¹⁶ and Bluetooth Low Energy ¹⁷ M631 dn, Flow M631h, M632h, M632fht, Flow M632z: Optional wireless direct printing ¹⁶ and NFC touch-to-print enabled with purchase of accessory ³³	
Network capabilities	Standard: via HP Jetdirect Ethernet embedded print server supports: 10Base-T, 100Base-Tx, 1000Base-T; 802.3az (EEE) support on Fast Ethernet and Gigabit Ethernet; IPsec Optional: 802.11 a/b/g/n wireless networking enabled with purchase of accessory ³⁴	
Network protocols	Via built-in networking solution: TCP/IP, IPv4, IPv6 Print: TCP-IP port 9100 Direct Mode, LPD (raw queue support only), Web Services Printing, IPP 2.0, Apple AirPrint, ³⁹ HP ePrint, FTP Print, Google Cloud Print Discovery: SLP, Bonjour, Web Services Discovery IP Config: IPv4 (BootP, DHCP, AutoIP, Manual, TFTP Config, ARP-Ping), IPv6 (Stateless Link-Local and via Router, Statefull via DHCPv6) Management: SNMPv2/v3, HTTP/HTTPS, Telnet, TFTP Config, FTP FW Download, Syslog Security: SNMPv3, SSL Cert Management, Firewall, ACL, 802.1x	
Security	Identity management: Kerberos authentication, LDAP authentication, 1000 user PIN codes, optional HP and 3rd party advanced authentication solutions (e.g., badge readers) Network: IPsec/firewall with Certificate, Pre-Shared Key, and Kerberos authentication, Supports WJA-10 IPsec configuration Plug-in, 802.1X authentication (EAP-PEAP; EAP-TLS), SNMPv3, HTTPS, Certificates, Access Control List Data: Storage Encryption, Encrypted PDF and Email (uses FIPS 140 validated cryptographic libraries from Microsoft), Secure Erase, SSL/TLS (HTTPS), Encrypted Credentials Device: Security lock slot, USB port disablement, Hardware Integration Pocket for security solutions, ⁴ Intrusion Detection with Red Balloon Security Technology - Constant in-device monitoring for attacks, HP Sure Start Secure Boot - BIOS Integrity Checking with self-healing capability, Whitelisting - loads only known good code (DLLs, EXEs, etc.) Security management: Compatible with HP JetAdvantage Security Manager, ⁷ Device Security Syslog Messages processed and accessible in ArcSight and Splunk SIEMs	
Compatible operating systems⁴¹	Windows 10 all 32- and 64-bit editions (excluding RT OS for Tablets), Windows 7 all 32- and 64-bit editions, Windows 8/8.1 all 32- and 64-bit editions (excluding RT OS for Tablets), Windows Vista all 32-bit editions (Home Basic, Premium, Professional, etc.), Windows XP SP3 32-bit editions (XP Home, XP Pro, etc.) Mac OS 10.12 Sierra, OS X 10.10 Yosemite, OS X 10.11 El Capitan Mobile OS: Android™ Linux Boss (5.0), Linux Debian (7.0, 7.1, 7.2, 7.3, 7.4, 7.5, 7.6, 7.7, 7.8, 7.9, 8.0, 8.1, 8.2, 8.3, 8.4, 8.5, 8.6), Linux Fedora (22, 23, 24), Linux Mint (17, 17.1, 17.2, 17.3, 18), Linux Red Hat Enterprise (6.0, 7.0), Linux SUSE (13.2, 42.1), Linux Ubuntu (12.04, 14.04, 15.10, 16.04, 16.10) Other: UNIX	
Compatible network operating systems	Citrix MetaFrame Presentation Server 3.0, Citrix MetaFrame XP Presentation Server (Feature Release 1, 2, and 3), Citrix on Windows Server 2003/2003R2, Citrix on Windows Server 2008/2008R2/2008 R2 SP1, Citrix on Windows Server 2012/2012R2, Citrix Presentation Server 4.0/4.5, Citrix XenApp 5.0 (Plus Feature Pack 2 and 3) for Windows Server 2008 Terminal Services 32- and 64-bit, Citrix XenApp 6.0/6.5 [for Windows Server 2008 R2 Terminal Services, 32- and 64-bit], Citrix XenApp 6.0/6.5/7.5 [for Windows Server 2008 R2 SP1 Terminal Services, 32- and 64-bit], Citrix XenApp 7.5 [for Windows Server 2012 and 2012 R2 Terminal Services, 64-bit], Citrix XenDesktop 5.6 [for Windows Server 2008 R2 Terminal Services, 32- and 64-bit], Citrix XenDesktop 5.6/7.0/7.5 [for Windows Server 2008 R2 SP1 Terminal Services, 32- and 64-bit], Citrix XenDesktop 7.0/7.5 [for Windows Server 2012 and 2012 R2 Terminal Services, 64-bit] Novell NetWare 6.5/SP8 Novell Clients novell.com/iprint , Novell iPrint Appliance v1.0, Novell Open Enterprise Server 11/SP1, Novell Open Enterprise Server 2 for Linux, Novell Servers novell.com/iprint Windows Server 2003/2003 R2 32-/64-bit (SP1/SP2) Standard/Enterprise/Datacenter (+ Cluster and Terminal Services), Windows Server 2003/2003 R2 32-bit (SP1/SP2), Standard/Enterprise (+ Cluster and Terminal Services), Windows Server 2008 32-/64-bit (SP2) Standard/Enterprise (+ Cluster and Terminal Services), Windows Server 2008 R2 64-bit (SP1) Standard/Enterprise (+ Cluster and Terminal Services), Windows Server 2008/2008 R2 32-/64-bit (SP1/SP2) Standard/Enterprise/Datacenter (+ Cluster and Terminal Services), Windows Server 2012/2012 R2 64-bit Standard/Foundation/Essentials/Datacenter (+ Cluster and Terminal Services)	
System requirements, Windows	A compatible operating system (see above), 2 GB available hard disk space (OS hardware requirements, see microsoft.com)	

	HP LaserJet Enterprise MFP M631 series	HP LaserJet Enterprise MFP M632 series
System requirements, Macintosh	A compatible operating system (see above), 1.3 GB available hard drive space; Internet (OS hardware requirements, see apple.com)	
Dimensions (width x depth x height)	M631 dn, Flow M631h: 512 x 558 x 640 mm (20.15 x 22 x 25.2 in); Maximum: ⁴² 1030 x 808 x 865 mm (40.5 x 31.7 x 34.1 in) M631z: 661 x 658 x 1234 mm (26 x 25.9 x 48.5 in); Maximum: ⁴² 1030 x 890 x 1500 mm (40.5 x 35 x 59.1 in)	M632h: 512 x 558 x 640 mm (20.15 x 22 x 25.2 in); Maximum: ⁴² 1030 x 808 x 865 mm (40.5 x 31.7 x 34.1 in) M632fht: 665 x 600 x 1094 mm (26.15 x 26 x 43.2 in); Maximum: ⁴² 1030 x 890 x 1356 mm (40.5 x 35 x 53.7 in) Flow M632z: 661 x 658 x 1234 mm (26 x 25.9 x 48.5 in); Maximum: ⁴² 1030 x 890 x 1500 mm (40.5 x 35 x 59.1 in)
Weight (with print cartridges)	M631 dn, Flow M631h: 33.2 kg (73.2 lb) M631z: 62.5 kg (137.8 lb)	M632h: 33.2 kg (73.2 lb) M632fht: 52.5 kg (115.8 lb) Flow M632z: 64.3 kg (141.8 lb)
What's in the box	HP LaserJet Enterprise Multifunction Printer, Power Cord, HP 37A Black Original LaserJet Toner Cartridge (~11,000 pages), ²⁶ CD with software drivers and documentation	
Software included³⁵	HP Connected, HP Device Experience (DXP), HP PCL 6 (XPS) Printer Driver, HP Software Installer/Uninstaller, Mac OS Welcome Screen (Directs users to 123.hp.com or OS App Source for printer software), Online user manuals	
Downloadable software	HP Easy Start (Guided Software Install for Windows OS and Mac); HP ePrint Software (ePrint Mobile Driver for Windows); HP ePrint Software (for Windows); HP JetAdvantage Security Manager; ⁷ HP Mobile Printing hp.com/us/en/ads/mobility/overview ; HP PCL6 (XPS) print driver only (No installer for "Add Printer" installs); HP PCL6 (XPS) print driver with installer; Product Documentation and Support; HP Proxy Agent Software; HP Universal Print Drivers (PCL6 and PS for Windows); Linux/Unix Print Drivers; Mac Software Solution; Printer Administrator Resource Kit; SAP (PS Print Drivers); HP Web Jetadmin; ⁶ Windows driver only solution; Windows Full Software Solution	
Warranty	One-year, next-business day, onsite warranty. Warranty and support options vary by product, country and local legal requirements. Go to hp.com/support to learn about HP award winning service and support options in your region.	

Environmental and power specifications

	HP LaserJet Enterprise MFP M631 series	HP LaserJet Enterprise MFP M632 series
Environmental ranges		
Temperatures	Operating range: 15 to 32.5° C (59 to 90.5° F); Recommended operating range: 15 to 27° C (59 to 80.6° F); Storage: -20 to 40° C (-4 to 104° F)	
Relative Humidity Range	Operating range: 10 to 80% RH; Recommended operating range: 30 to 70% RH; Storage range: 10 to 90% RH	
Acoustic power emissions⁴³		
Ready mode	M631dn, Flow M631h, M631z: Inaudible	M632h, M632fht: Inaudible Flow M632z: 3.5 B(A)
Active printing	M631dn, Flow M631h, M631z: 6.9 B(A)	M632h, M632fht: 7.0 B(A) Flow M632z: 6.9 B(A)
Active copying	M631dn, Flow M631h: 7.4 B(A) M631z: 7.6 B(A)	M632h, M632fht: 7.4 B(A) Flow M632z: 7.6 B(A)
Active scanning	M631dn, Flow M631h: 7.2 B(A) M631z: 7.3 B(A)	M632h, M632fht: 7.2 B(A) Flow M632z: 7.3 B(A)
Acoustic pressure emissions (bystander)		
Ready mode	M631dn, Flow M631h, M631z: Inaudible	M632h, M632fht: Inaudible Flow M632z: 15 dB(A)
Active printing	M631dn, Flow M631h: 55 dB(A) M631z: 53 dB(A)	M632h: 56 dB(A) M632fht, Flow M632z: 54 dB(A)
Active copying	M631dn, Flow M631h: 59 dB(A) M631z: 60 dB(A)	M632h, M632fht, Flow M632z: 60 dB(A)
Active scanning	<i>All models:</i> 58dB(A)	
Power specifications⁴⁴		
Power supply	Built-in 115V or 220V power supply (Not dual voltage, power supply varies by part number with # Option code identifier) 100 V-127 V nominal @ +/-10% (min 90 V, max 140 V); 50-60 Hz nominal +/- 3 Hz (min 47 Hz, max 63 Hz); 12 A 220 V-240 V nominal @ +/-10% (min 198 V, max 264 V); 50-60 Hz nominal +/- 3 Hz (min 47 Hz, max 63 Hz); 6 A	
Power consumption	Printing/copying: 740 watts; Ready: 29 watts; Sleep: 3.3 watts; Auto-off/wake on LAN: 0.8 watts; Manual off: 0.1 watts	
Energy-saving features	HP Auto-On/Auto-Off Technology, ²² Instant-on Technology, ²³ Instant-on Copy	
Environmental specifications	ENERGY STAR® certified; Blue Angel compliant; CECP; EPEAT® Silver registered models available ⁴⁵	
Typical Electricity Consumption (TEC)⁴⁴	2.219 kWh/week (Blue Angel); 2.348 kWh/week (ENERGY STAR®)	2.626 kWh/week (Blue Angel); 2.849 kWh/week (ENERGY STAR)
Safety and regulatory compliance	IEC 60950-1:2005 +A1:2009 +A2:2013 (International); EN60950-1:2006 +A11:2009 +A1:2010 +A12:2011 +A2:2013 (EU); EN 60825-1:2007 / IEC 60825-1:2007 (Class 1 Laser Product); EN 62479:2010 / IEC 62479:2010; Low Voltage Directive 2006/95/EC with CE Mark (Europe); GS Certificate (Germany, Europe); UL/cUL Listed and UC CoC (US/Canada); CAN/CSA C22.2 No. 60950-1-07 2nd Ed. 2011-12; Compliance with Laser safety standards 21 CFR 1040.10 and 1040.11 except for deviations pursuant to Laser notice No. 50, Dated June 24, 2007; Other safety approvals as required by individual countries	
Electromagnetic emission standard	CISPR 22: 2008/EN 55022: 2010 (Class A), EN 61000-3-2: 2006 +A1: 2009 + A2: 2009; EN 61000-3-3 :2008; EN 55024:2010; FCC Title 47 CFR, Part 15 Class A (USA); ICES-003, Issue 4 (Canada); EMC Directive 2004/108/EC with CE Marking (Europe); other EMC approvals as required by individual countries	
Telecom compliance certification	M631z, M632fht, Flow M632z (Telecom wired): ES 203 021; R&TTE Directive 1999/5/EC with CE marking (Europe); FCC Rules and Regulations 47 CFR Part 68; Industry Canada CS03; and other Telecom approvals as required by individual countries.	
	M631z (Telecom wireless): EN301 489-1 v1.9.2/EN 301 489-1v2.2.1 (2012-09) EN300 328 v1.9.1, FCC Title 47 CFR Part 15 Subpart C (section 15.247)/IC:RSS-210 IEC 62311:2007/EN62311:2008 and other Telecom approvals as required by individual countries.	

Ordering information

Use accessories and supplies specifically designed for the MFP to help provide efficient performance. To order the accessories and supplies listed here, go to hp.com. To contact HP by country, please visit hp.com/go/contact. If you don't have access to the Internet, contact your qualified HP dealer.

MFP	HP LaserJet Enterprise MFP M631dn	J8J63A
	HP LaserJet Enterprise Flow MFP M631h	J8J64A
	HP LaserJet Enterprise MFP M631z	J8J65A
	HP LaserJet Enterprise MFP M632h	J8J70A
	HP LaserJet Enterprise MFP M632fht	J8J71A
	HP LaserJet Enterprise Flow MFP M632z	J8J72A
Supplies	HP 37A Black Original LaserJet Toner Cartridge (~11,000 pages) ²⁶	CF237A
	HP 37X High Yield Black Original LaserJet Toner Cartridge (~25,000 pages) ²⁶	CF237X
	HP 37Y Extra High Yield Black Original LaserJet Toner Cartridge (~41,000 pages) ²⁶	CF237Y
	HP Staple Cartridge Refill (5,000 staples)	J8J96A
Accessories	HP LaserJet 550-sheet paper feeder	J8J89A
	HP LaserJet 1x550-sheet paper feeder with stand and cabinet	J8J91A
	HP LaserJet 1x550 and 2,000-sheet HCI feeder and stand	J8J92A
	HP LaserJet 3x550-sheet paper feeder and stand	J8J93A
	HP LaserJet envelope feeder	J8J90A
	HP Internal USB Ports (AA Module - CSR-A)	B5L28A
	HP Secure High Performance Hard Disk Drive (FIPS - CSR-A)	B5L29A
	HP Foreign Interface Harness (FIH)	B5L31A
	HP LaserJet MFP Analog Fax Accessory 500	CC487A
	HP Jetdirect 2900nw Print Server	J8031A
	HP Jetdirect 3000w NFC/Wireless Accessory ^{16,33}	J8030A
	HP Trusted Platform Module Accessory	F5562A
	HP LaserJet Keyboard Overlay Kit Sweden (Flow models only)	A7W14A
	HP LaserJet Keyboard Overlay Kit - Danish/French-Switzerland/German-Switzerland (in the box when ordering BAZ option) (Flow models only)	A7W13A
	HP LaserJet 220v Maintenance Kit (225,000 pages)	J8J88A
	HP 300 ADF Roller Replacement Kit (150,000 pages)	J8J95A
1 GB Memory DIMM Kit	E5K48A	
HP Services	Boost performance—it's your choice. HP Care provides options to help you manage imaging and printing—from Care Pack services to customisable and advisory services. With HP Managed Print Services, we oversee everything for you.	Make sure your imaging and printing investments are protected with Care Pack, part of HP Care. Pick your package of services to keep your MFP running and your business moving. Now your office can spend less time trouble-shooting and more time getting things done. For details, visit hp.com/go/cpc . ⁴⁶
	HP 3 Year Next Business Day + Defective Media Retention LJ Enterprise MFP M63x Hardware Support	U9NK0E
	HP 5 Year Next Business Day + Defective Media Retention LJ Enterprise MFP M63x Hardware Support	U9NK2E
	HP 1 Year Post-Warranty Next Business Day + Defective Media Retention LJ Enterprise MFP M63x Hardware Support	U9NL8PE
Solutions	HP Web Jetadmin: hp.com/go/wja	
	HP Universal Print Driver: hp.com/go/upd	
	HP JetAdvantage Security Manager: hp.com/go/securitymanager	
	HP LaserJet Fonts, Barcodes, and IPDS Emulation available at hp.com/go/laserjetfonts	
	HP JetAdvantage On Demand Cloud Solutions: hp.com/go/JetAdvantageondemand To learn more about available infrastructure, management, and workflow solutions, visit hp.com/go/printing_solutions	

Appendix A: Security features

The world's most secure printing¹

The HP LaserJet Enterprise MFP M631/M632 series is designed to work together with security solutions to help reduce risk, improve compliance, and protect your network from end to end. Protect your device, data, and documents with built-in and optional security features.¹

Protect your device

As capabilities expand and devices become more integrated into your work, device security becomes increasingly important. These features help protect the M631/M632 series:



- **Embedded protection:** Multi-level, built-in features help protect your MFP against complex security threats from boot up to shut down. For details, see hp.com/go/PrintersThatProtect.
 - HP Sure Start helps the device BIOS to boot up properly every time with unaltered HP genuine code and without corruption. If an anomaly is detected, the device can repair itself by rebooting.
 - Whitelisting helps the device firmware to load properly with HP genuine code—without corruption—every time.
 - Run-time intrusion detection guards against malware, by continually monitoring activity to detect and stop attacks. If an anomaly is detected, the device automatically reboots.
- **Encrypted storage with secure erase:** The MFP comes with built-in encryption to protect data. When stored data is no longer needed, use built-in device capabilities to securely overwrite data and safely remove sensitive information. HP offers multiple mechanisms to erase stored data, including functionality that is designed to conform to U.S. National Institute of Science and Technology (NIST) Special Publication 800-88.
- **Ports and protocols:** FTP and Telnet are closed by default to help prevent unsecure protocols from being used. Unused physical ports (such as host USB ports or network ports) can be disabled to prevent unauthorised use.
- **Administrator access control for device:** You can set administrator passwords so only IT staff or other authorised personnel can set up and configure device settings.
- **Common Criteria Certification:** HP Enterprise devices are certified as compliant with internationally recognised security standards, such as Common Criteria Certification (CCC) and FIPS 140.



Protect your data

Your MFP harbours sensitive information—make sure it's not at risk.

- **Network protection:** 802.1x or IPsec encrypted network standards can help protect data travelling over the network between the device and management tools such as HP Web Jetadmin⁶ or the Embedded Web Server.
- **Encrypt data in transit:**
 - Protect print jobs travelling to the device with encryption such as Internet Print Protocol over TLS (IPPS). Or, Secure Encrypted Print with HP Universal Print Driver⁴⁷ provides true symmetric AES256 print job encryption and decryption from the client to the page based on a user-defined password using FIPS 140 validated cryptographic libraries from Microsoft.
 - Use CipherSuite Encryption Strength to select encryption strength to prevent the use of legacy or insecure protocols for data in transit.
 - Scanned PDFs and emails can be encrypted using built-in FIPS 140 validated cryptographic libraries from Microsoft.
 - HP offers a rich portfolio of HP JetAdvantage Workflow Solutions that provide advanced capture and route capabilities with enterprise level security. For more information, visit hp.com/go/documentmanagement.
- **Encrypt data at rest:**
 - The HP High-Performance Secure Hard Disk (optional on M631 dn; standard on all other models) provides full 256-bit AES hardware encryption to protect sensitive business information, such as print jobs or passwords.³
 - Add the optional HP Trusted Platform Module (TPM) accessory to strengthen protection of encrypted credentials and data by automatically sealing device encryption keys to the TPM. It provides secure device identity by generating and protecting certificate private keys.⁵

Resources

HP JetAdvantage Security Solutions:

- Web site: hp.com/go/printsecurity
- Solution brief: <http://h20195.www2.hp.com/V2/GetPDF.aspx/4AA3-1295EEW.pdf>
- Video: <http://hp.brightcovegallery.com/products/detail/video/4270905124001/>

HP JetAdvantage Security Manager:⁷

- Web site: hp.com/go/securitymanager
- Brochure: <http://h20195.www2.hp.com/V2/GetPDF.aspx/4AA3-9275EEW.pdf>
- Video: <http://hp.brightcovegallery.com/products/detail/video/4270837770001/>

- **Firewall:** Prevent malware and viruses from entering your network by limiting printer access to computing devices in network.
- **Authentication and authorisation:** Manage user access using native features or optional solutions.
 - With native user authentication, you can require users to sign in with PIN/PIC, LDAP, or Windows/Kerberos authentication. You can also integrate these with Active Directory.
 - With optional authentication solutions like HP Access Control, you can enable advanced authentication using proximity cards or NFC-enabled mobile devices. To learn more, visit hp.com/go/hpac. The Hardware Integration Pocket enables integration of select card readers.⁴
- **Role-based access controls:** Restrict access to management utilities, avoid unwanted device configurations, and help reduce costs and security risks through printer feature restrictions.
 - With HP FutureSmart 4, you have more control than ever before over device security and permission settings. IT administrators can decide who can interact with certain device capabilities.
 - Optional HP Access Control Rights Management allows you to give different capabilities to different users, or even entire departments, depending on their needs. For example, you can limit who can fax, scan to email, or scan to fax.
- **Mobile printing:** Wi-Fi Direct[®],¹⁶ Bluetooth[®] Low Energy,¹⁷ and NFC touch-to-print³³ allow mobile users to connect to the MFP without accessing the company network. HP also offers server-based mobile print solutions that provide secure pull printing, as well as advanced management and reporting capabilities. For more information about HP JetAdvantage Connect and HP Access Control, please visit hp.com/go/businessmobileprinting.
- **CA and Device Identity Certificates:** This MFP supports identity certificates signed by a corporate certificate authority, which provides verification of identity and authenticity. This device also supports CA certificates for validation of identity certificates. Certificates can enable secure end-to-end communications with the device when used with features like IPsec, Secure-IPP, HP ePrint, and more. Additional certificates can be stored for validating S/MIME email servers and 802.1x authentication. Save time by using HP JetAdvantage Security Manager to automatically install and renew certificates.⁷



Safeguard your physical documents

HP offers several solutions to help keep documents from falling into the wrong hands and help prevent fraud.

- **PIN/Pull printing:** Have documents held and released only to the person who printed them. Pull printing solutions help protect sensitive data by requiring authentication at the device, and give users the flexibility of pulling the documents from any device that is enabled with the solution.
 - Built-in PIN printing: When users send confidential print jobs, they assign a PIN which they must enter at the device to release the job.
 - HP JetAdvantage Secure Print: With this affordable solution designed for SMB, jobs can be stored in the cloud or on the user's desktop. It's easy to set up and use, allows users to release jobs from a mobile device, and supports multi-vendor devices. For more information, visit hp.com/go/JetAdvantageSecurePrint.¹⁰
 - HP JetAdvantage Private Print: With HP's free cloud-based solution you get the advantages of pull printing, without the complexity. It is simple to set up and does not require a server, installation, or maintenance. To learn more, visit hp.com/go/JetAdvantagePrivatePrint.¹¹
 - HP Access Control Secure Pull Printing: This optional robust server-based solution offers multiple forms of authentication including badge release, as well as enterprise level security, management, and scalability. To learn more, visit hp.com/go/hpac.
- **Embedded anti-fraud features:** This is a valuable tool in sensitive documents like prescriptions, birth certificates, or transcripts. Anti-fraud features are embedded before they are routed to the MFP and printed on plain paper by using the optional HP and TROY Secure Document Printing solution.

Easily manage security across the fleet



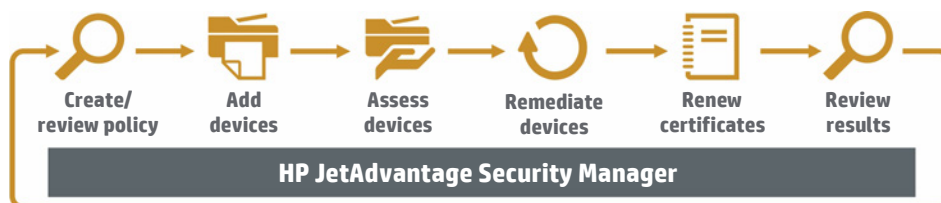
HP JetAdvantage Security Manager

Secure your HP printing fleet with the solution Buyers Laboratory (BLI) calls trailblazing.⁷

HP JetAdvantage Security Manager

Easily set security configuration policies and automatically validate settings for every HP printer in your fleet. Optional HP JetAdvantage Security Manager offers an effective, policy-based approach.⁷

- Automate many tedious tasks so you can free up time for your IT staff and protect the data and documents that matter most to your business.
- Streamline the process to securely deploy and monitor devices by applying a single security policy across the fleet.
- Easily create a print security policy for your environment by leveraging the HP Security Manager Base Policy template.
- Secure new HP devices as soon as they are added to your network, or after a reboot, with HP Instant-on Security. The software automatically configures settings to comply with your corporate security policy.
- Improve the security of your infrastructure and device communications by deploying unique identity certificates and monitoring to ensure they remain valid. With HP Security Manager's efficient fleet management of certificates, the administrative overhead to install certificates across your fleet is now less than manually installing on a single device.
- Actively maintain and verify compliance with your defined security policies by using HP Security Manager automated monitoring and risk-based reporting.



To learn more about HP JetAdvantage Security Manager, please visit hp.com/go/securitymanager.

Works with SIEM tools

Get instant notification of potential security issues so immediate action can be taken to prevent potential attacks. Event data from HP Enterprise devices can be sent to Security Information and Event Management (SIEM) tools such as ArcSight, Splunk, or SIEMonster for real-time monitoring. IT security can easily view printer endpoints as part of the broader IT ecosystem to detect and resolve printer security alerts.



HP security best practices

Since 2005, HP has published security best practice checklists for networked environments common to enterprises and small to medium businesses. For more information on HP security solutions and checklists, please visit hp.com/go/printsecurity.

Appendix B: Fleet management features

Simple one-to-one device management

The MFP can also be managed using the HP Embedded Web Server. Use a web browser to monitor status, configure network parameters, or access device features.

Resources

HP Web Jetadmin:

- Web site: hp.com/go/wja
- Solution brief: <http://h20195.www2.hp.com/V2/GetPDF.aspx/4AA5-2719EEW.pdf>
- Video: <http://hp.brightcovegallery.com/solutions/detail/video/4271055504001/>

HP Universal Print Driver:

- Web site: hp.com/go/upd
- Solution brief: <http://h20195.www2.hp.com/V2/GetPDF.aspx/4AA2-4781EEW>

Efficiently manage from a central location

The HP LaserJet Enterprise MFP M631/M632 series is supported by HP Web Jetadmin,⁶ an HP JetAdvantage Management Solution. This single solution allows you to efficiently manage a wide variety of networked and PC-connected devices, including printers, multifunction products, and scanners. Remotely install, configure, troubleshoot, safeguard, and manage your devices—ultimately increasing business productivity by helping you save time, control costs, protect your assets, and provide a better return on your investment. Easily integrate new HP LaserJet Pro and Enterprise devices without having to upgrade HP Web Jetadmin. A universal plug-in lets you support most features of new devices and apply corporate policies in one step—helping to save time and simplify device management.⁶

HP Web Jetadmin enables you to:

- Gain a clear picture of how many and what kinds of devices you have.
- Get visibility into your supplies usage, so you can make smarter purchasing decisions, reduce spending, and even track and allocate printing costs to individual departments or users.
- Simplify, and, in many cases, automate routine tasks. For example, you can apply fleet-wide policies to automatically configure new devices with the right printing and security settings when they're added to your network.
- Give your help desk staff the tools they need—such as automatic alerts—to resolve problems quickly, and often proactively, before a call is even received.
- Verify that your devices are up-to-date with the latest firmware and are properly configured (especially important for organisations that need to meet regulatory requirements).
- Use robust tracking and reporting tools to help you make better decisions about how your devices are deployed across your organisation, so you can make the most of your IT investments.
- Take advantage of additional options, like the HP Database Connectivity Module which works together with Web Jetadmin to help you establish and help achieve environmental goals.
- Get the ultimate in investment protection with HP Web Jetadmin Premium Support. This expanded service option gives your staff access to HP's dedicated software support engineers, who provide advice, usage recommendations, problem diagnosis, and more.

HP Web Jetadmin can benefit IT-managed print environments of all sizes, from large enterprises managing thousands of devices to small businesses with just a handful. For more information—or to download this software tool at no additional charge—visit hp.com/go/wja.

Make it easy for all to print with one common driver

The HP Universal Print Driver enables both mobile Microsoft device users and traditional desktop users to access the full features of nearly every HP device in your managed printing environment without the need for assistance.⁴⁷

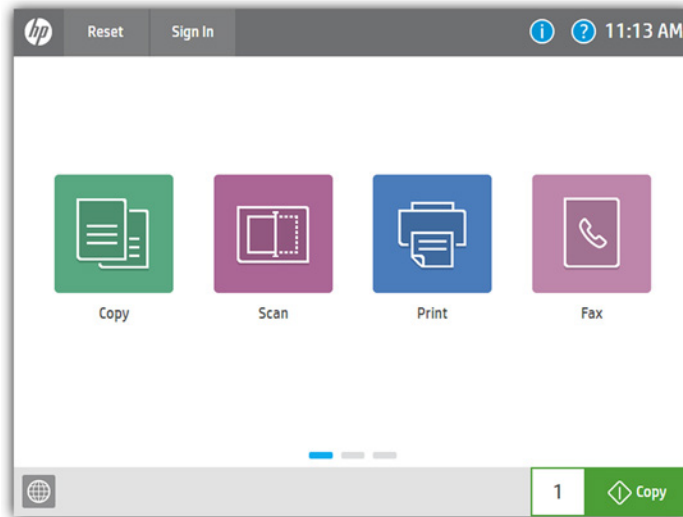
Eliminate the clutter on your computer by replacing multiple print drivers with one versatile solution. Empower IT by dramatically reducing the number of drivers they have to manage—and by giving them the tools they need to improve efficiency. With the HP UPD, your IT team can easily adjust device settings to help reduce printing costs, improve security, and help meet environmental goals. For example, it's simple to push two-sided printing or quicker sleep times across the fleet. Plus, the valuable tools in the HP UPD Printer Administrator's Resource Kit help you save time and money by streamlining IT tasks, implementing printing policies, and monitoring usage across the enterprise. You can also use the HP UPD in tandem with HP Web Jetadmin to create fleet-wide managed printer lists, reports, and more.

You can download this valuable fleet driver solution and the tools in the Printer Administrator's Resource Kit at no additional charge. For more information about how the HP Universal Print Driver can help you protect your imaging and printing investment, simplify management, and boost productivity, visit hp.com/go/upd.

Appendix C: Control panel features

Upgrade to a modern interface

The HP LaserJet Enterprise MFP M631/M632 series is powered by HP FutureSmart 4.0 firmware. Its modern, tablet-like interface keeps things simple and intuitive across your fleet of Enterprise devices. A scalable control panel interface improves future extensibility and allows for customisation, along with a robust set of new apps and usability features. You can even customise with your own wallpaper image and company logo. The new Message Center, with more detailed information and helpful animations, makes it easy to address device events. The simplified home screen displays just four core apps by default (three apps for products without fax). Additional apps are easily accessed by swiping right to left, like with a smartphone or tablet.

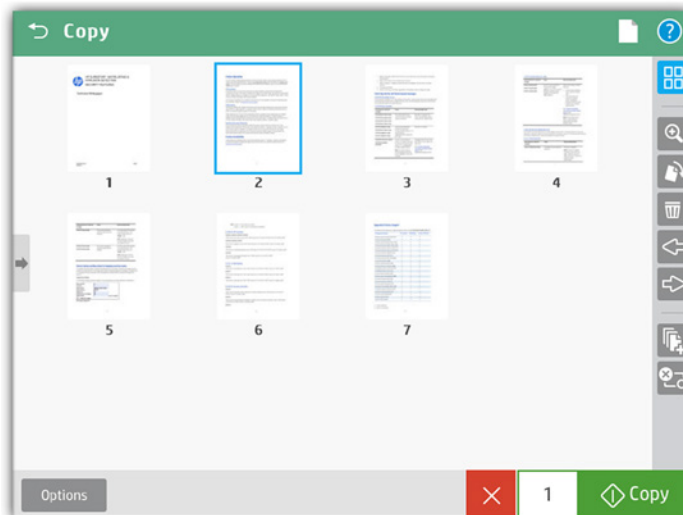


Edit jobs right at the MFP

The control panel features an enhanced image preview—now for both copies and scans. Right from the device's 20.3 cm colour touchscreen control panel, you can easily preview and edit scans before sending them. You can apply changes (like rotating) to a single page, or to multiple pages at once. Batch separation allows users to create separate PDF or PDF/A files from scanned pages. The Flow MFP M631h and M632z models can also create PDF OCR and PDF/A OCR files.



The new user interface enables **swiping**, **rotate**, and **drag-and-drop** capabilities



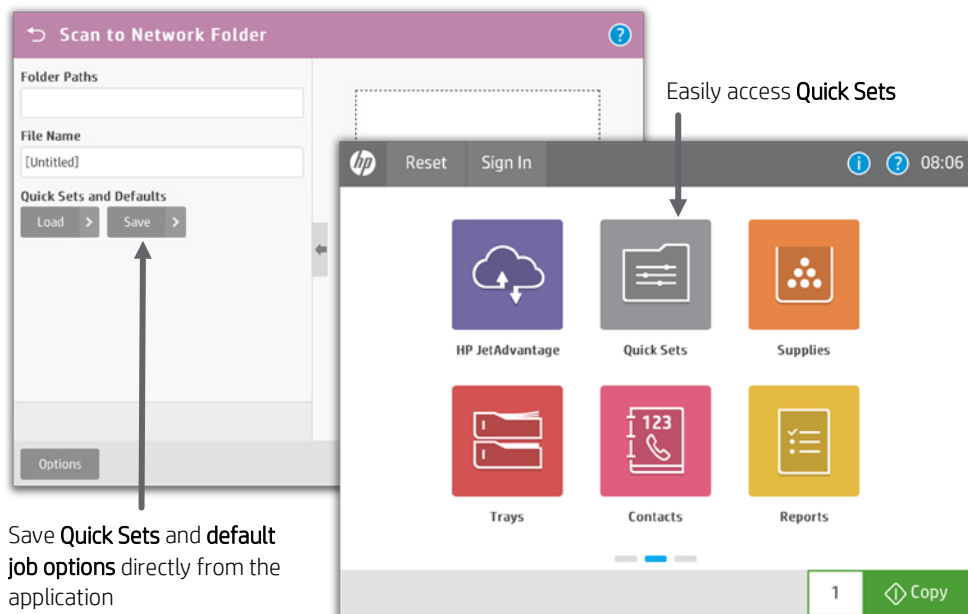
You can start a **preview** prior to committing to the copy job

Use Quick Sets to launch automated workflows

The MFP's digital sending capability allows users to route documents to a variety of destinations like email recipients, network folders, fax, FTP, a USB device, or Microsoft SharePoint.

Quick Sets automate all of the steps of a complicated workflow and provide easy access to the configurations you use most, such as page size, resolution, and file format. You can also specify security settings, such as encrypted PDFs to be delivered through encrypted and signed emails.

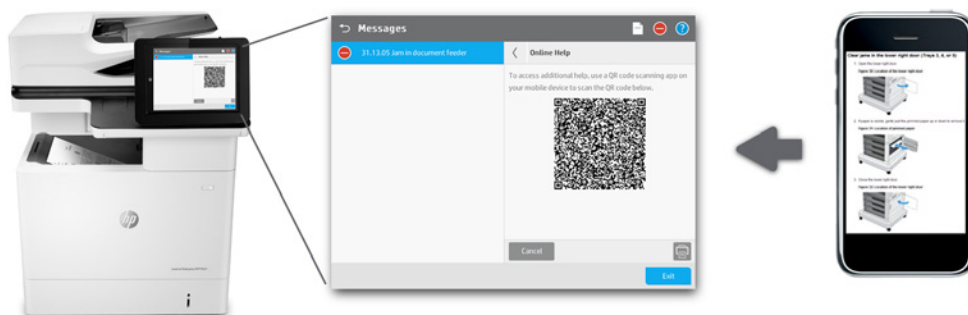
Help users find what they need by moving individual Quick Sets to any screen or folder using the home screen customisation feature. With Quick Sets, IT can promote or block access to certain device features. Calls to the helpdesk can be reduced when users have everything they need and are restricted from accessing settings they shouldn't tamper with.



Save **Quick Sets** and **default job options** directly from the application

Troubleshoot with ease

The HP LaserJet Enterprise MFP M631/M632 series can help save your IT department valuable time when it comes to troubleshooting problems. The Remote Control Panel allows users to operate the user interface remotely, so IT can troubleshoot problems without running to the MFP.⁴⁸ Users can also quickly troubleshoot technical issues with HP's innovative, cloud-based Online Help services that are relevant and up to date. Easily solve problems from your PC or mobile device. A Quick Response (QR) code on the touchscreen links to Online Help using smart phones and tablets.⁴⁹ You can also find these links in the HP Embedded Web Server event log.



¹ Based on HP review of 2016 published security features of competitive in-class printers. Only HP offers a combination of security features that can monitor to detect and automatically stop an attack then self-validate software integrity in a reboot. For a list of printers, visit hp.com/go/printersthatprotect. For more information: hp.com/go/printersecurityclaims.

² Some features require additional purchase. A FutureSmart service pack update may be required to activate security features. Learn more at hp.com/go/printsecurity.

³ The HP High Performance Secure Hard Disk is standard on all models except the M631dn. It can be added to the M631dn with an optional accessory.

⁴ Solutions deployed through the Hardware Integration Pocket (HIP) may require additional purchase.

⁵ Use of the optional HP Trusted Platform Module accessory may require a firmware upgrade.

⁶ HP Web Jetadmin is available for download at no additional charge at hp.com/go/wja.

⁷ HP JetAdvantage Security Manager must be purchased separately. For details, see hp.com/go/securitymanager. Competitive claim based on HP internal research on competitor offerings (Device Security Comparison, January 2015) and Solutions Report on HP JetAdvantage Security Manager 2.1 from Buyers Laboratory LLC, February 2015.

⁸ Based on an HP assessment of print manufacturers SaaS offerings as of September 1, 2016, no other print manufacturer offers a single cloud portal for user and app management.

⁹ Requires Internet access. Supported browsers include Microsoft Internet Explorer® 9-11, Google Chrome™ 9 and newer, Mozilla® Firefox® 4 and newer, and Safari® 5 and newer. Compatible with select HP LaserJet, PageWide, OfficeJet Pro, and Digital Sender Flow devices that can connect to the Internet. Some apps support multi-vendor environments. May require a firmware upgrade. Learn more at hp.com/go/jetadvantageondemand.

¹⁰ HP JetAdvantage Secure Print: Pull printing works with any network-connected printer or MFP. On-device authentication is available for many HP LaserJet, PageWide, and OfficeJet Pro devices and selected non-HP devices. Some devices may require a firmware upgrade. Internet connection required for cloud storage and retrieval of print jobs. Print-job release from a mobile device requires a network connection and QR code. For more information and a list of supported printers and MFPs, see hp.com/go/jetadvantagesecureprint.

¹¹ HP JetAdvantage Private Print is available only in North America and select European countries. Card reader is available for separate purchase for selected HP printers and MFPs with touchscreens. Learn more at hp.com/go/jetadvantageprivateprint.

¹² Measured using ISO/IEC 17629. Exact speed varies depending on the system configuration, software application, driver, and document complexity. Learn more at hp.com/go/printerclaims.

¹³ Measured after 15 minutes in sleep. Exact speed varies depending on the system configuration, software application, driver, document complexity, and time in sleep.

¹⁴ Measured using ISO/IEC 24734; excludes first set of test documents. For more information, see hp.com/go/printerclaims. Exact speed varies depending on the system configuration, software application, driver, and document complexity.

¹⁵ Measured using ISO 24734 Feature Test, A5 Landscape Feed. Speed may vary based on content, PC, media orientation, and media type. A5 landscape printing cannot be duplexed.

¹⁶ Wi-Fi Direct printing is embedded in the HP LaserJet Enterprise M631z model. All other models can add wireless direct with purchase of the optional HP Jetdirect 3000w NFC/Wireless Direct Accessory. Mobile device needs to be connected directly to the signal of a Wi-Fi Direct® supported MFP or printer prior to printing. Depending on mobile device, an app or driver may also be required. For details, see hp.com/go/mobileprinting. Wi-Fi Direct is a registered trademark of Wi-Fi Alliance®.

¹⁷ Bluetooth® Low Energy is standard only on the HP LaserJet Enterprise MFP M631z model, and it cannot be added to other models.

¹⁸ Requires purchase of server software such as HP JetAdvantage Connect or HP Access Control Secure Pull Printing. Learn more at hp.com/go/businessmobileprinting.

¹⁹ Purchase of optional paper trays required to reach maximum input capacity. The M631z has a maximum input capacity of 2,850 sheets, the M632fht has a maximum input capacity of 1,750 sheets, and all other models have a maximum input capacity of 3,750 sheets.

²⁰ Standard and optional paper-handling accessories vary by model. See Paper-handling accessories, page 9, for details.

²¹ Energy claim based on TEC data reported on energystar.gov as of January 2017. Data normalised to determine energy efficiency of in-class laser printers with published speeds of 55 to 65 ppm (letter). Subject to device settings. Actual results may vary.

²² HP Auto-On/Auto-Off Technology capabilities are subject to printer and settings.

²³ Compared with products that use traditional fusing.

²⁴ Based on ISO/IEC 19752 cartridge yields for HP 81X High Yield Black Original LaserJet Toner cartridges compared with HP 37Y Extra High Yield Black Original LaserJet Toner cartridges. Learn more at hp.com/go/learnaboutsupplies.

²⁵ HP 37X High Yield and 37Y Extra High Yield Black Original LaserJet Toner cartridges are not included in printer purchase; purchase separately. Learn more at hp.com/go/learnaboutsupplies.

²⁶ Toner cartridge yields established using ISO/IEC test standards. Actual yields and costs vary considerably depending on images printed, number of colour pages printed, and other factors.

²⁷ Scan speed measured from ADF at default 300 dpi (black-and-white, greyscale, and colour). Actual processing speeds may vary depending on scan resolution, network conditions, computer performance, and application software.

²⁸ The Recommended Monthly Scan Volume (RMSV) is up to 44,500 for the Flow M631h and Flow M632z models and up to 23,750 pages for all other models. HP recommends that the number of scanned pages per month be within the stated range for optimum device performance, based on factors including supplies replacement intervals and device life over an extended warranty period.

²⁹ The pull-out keyboard and HP EveryPage are only available on the HP LaserJet Enterprise Flow MFP M631h and Flow MFP M632z models.

³⁰ Fax capability is optional on the HP LaserJet Enterprise MFP M631dn, MFP Flow M631h, and MFP M632h models.

³¹ An administrator must enable the easy-access USB port before use.

³² The MFP is limited to a total of six input feeders. The HP LaserJet Enterprise MFP M631z, M632fht, and Flow M632z can add up to one additional optional 550-sheet paper feeder or envelope feeder. The M631dn, Flow M631h, and M632h can add up to four additional optional 550-sheet paper feeders; or, they can add one of the other optional accessories (1x550-sheet paper feeder and stand, 3x550-sheet paper feeder with stand and cabinet, or 1x550 and 2,000-sheet HCL feeder and stand) and up to one additional optional 550-sheet paper feeder or envelope feeder. The optional maximum configurations may raise glass height above best customer usability standards.

-
- ³³ Touch-to-print capability can be added to all models (except M631z) with purchase of the optional HP Jetdirect 3000w NFC/Wireless Direct Accessory. Mobile device must support Near Field Communication (NFC)-enabled printing. For more information, see hp.com/go/businessmobileprinting.
- ³⁴ All models can add wireless networking with the purchase of the HP Jetdirect 2900nw Print Server. Wireless performance is dependent on physical environment and distance from access point, and may be limited during active VPN connections.
- ³⁵ Scan software not included in box. HP Scan and TWAIN driver available for download at hp.com/support.
- ³⁶ Based on standard ITU-T test image #1 at standard resolution and MMR encoding, the HP fax device can transmit at 3 sec/page for V.34 and 6 sec/page for V.17.
- ³⁷ HP recommends that the number of printed pages per month be within the stated range for optimum device performance, based on factors including supplies replacement intervals and device life over an extended warranty period.
- ³⁸ Duty cycle is defined as the maximum number of pages per month of imaged output. This value provides a comparison of product robustness in relation to other HP LaserJet or HP Color LaserJet devices, and enables appropriate deployment of printers and MFPs to satisfy the demands of connected individuals or groups.
- ³⁹ Supports the following devices running iOS 4.2 or later: iPad, iPad 2, iPhone (3GS or later), iPod touch (3rd generation or later). Works with HP's AirPrint-enabled printers and requires the printer be connected to the same network as your iOS device. Wireless performance is dependent on physical environment and distance from the access point.
- ⁴⁰ Printer requires ePrint account registration. App or software may be required. Wireless operations are compatible with 2.4 GHz operations only. Learn more at hp.com/go/mobileprinting.
- ⁴¹ Full solution software available only for Windows 7 and newer, UPD software available only for Windows 7 and newer, HP Software for Mac and Windows is no longer included on the CD, but can be downloaded from 123.hp.com. Legacy Windows Operating Systems (XP, Vista, and equivalent servers) get print and Scan drivers only with a reduced feature set, Windows RT OS for Tablets (32- and 64-bit) uses a simplified HP print driver built into the RT OS.
- ⁴² Maximum dimensions measured with right side jam access door open, left side cartridge door open, all trays open and extended, and ADF open.
- ⁴³ Acoustic values are subject to change. For current information, see hp.com/support.
- ⁴⁴ Power requirements are based on the country/region where the printer is sold. Do not convert operating voltages. This will damage the printer and void the product warranty. ENERGY STAR® value typically based on measurement of 115V device.
- ⁴⁵ EPEAT® registered where applicable. EPEAT registration varies by country. See epeat.net for registration status by country.
- ⁴⁶ Service levels and response times may vary depending on your geographic location. Service starts on date of hardware purchase. Restrictions and limitations apply. For details, visit hp.com/go/cpc.
- ⁴⁷ The HP Universal Print Driver available for download at no additional charge at hp.com/go/upd.
- ⁴⁸ Availability dependent on firmware or software updates or upgrades.
- ⁴⁹ Online Help must be enabled on the printer or MFP. Mobile device must have an Internet connection to access online services.

Sign up for updates
hp.com/go/getupdated



© Copyright 2017 HP Development Company, L.P. The information contained herein is subject to change without notice. The only warranties for HP products and services are set forth in the express warranty statements accompanying such products and services. Nothing herein should be construed as constituting an additional warranty. HP shall not be liable for technical or editorial errors or omissions contained herein.

Apple, AirPrint, iPad, iPhone, and iPod are trademarks of Apple Inc. Android, Google Chrome, and Google Cloud Print are trademarks of Google Inc. ENERGY STAR is a registered trademark owned by the U.S. Environmental Protection Agency. Microsoft and Windows are U.S. registered trademarks of the Microsoft group of companies. Bluetooth is a trademark owned by its proprietor and used by HP Inc. under license.

4AA6-9404EEE, May 2017, Rev. 1

