



Philips Brilliance
LCD monitor with USB-C
Dock

P Line

32 (31.5"/80 cm diag.)
3840 x 2160 (4K UHD)

Brilliance



328P6VUBREB

Simplify your connections

with USB-C docking monitor

This Philips Brilliance monitor with USB-C docking reduces cable clutter. View vivid, crisp 4K UHD images, securely connect to intranet and re-charge your notebook all at the same time with a single USB-C cable.

Single cable USB-C connection

- Built-in USB-C docking station
- Connect your notebook with one USB-C cable
- Power and re-charge compatible notebook from the monitor
- USB 3.1 high-speed data transfer
- Built-in RJ-45 Ethernet gives data security

True-to-life colourful images

- High Dynamic Range (HDR) for more lifelike colourful visuals
- Ultra Wide-Color wider range of colours for a vivid picture
- 1.074 billion colours for smooth colour gradations and detail
- UltraClear 4K UHD (3840 x 2160) resolution for precision
- LowBlue Mode for easy-on-the-eyes productivity

Designed for the way you work

- MultiView enables simultaneous dual connect and view
- SmartErgoBase enables user-friendly ergonomic adjustments

PHILIPS

LCD monitor with USB-C Dock
P Line 32 (31.5"/80 cm diag.), 3840 x 2160 (4K UHD)

328P6VUBREB/00

Highlights

Built-in USB-C docking station



This Philips display features a built-in USB type-C docking station with power delivery. Its slim, reversible USB-C connector allows for easy, one-cable docking. Keep it simple by connecting all your peripherals, like your keyboard, mouse and your RJ-45 Ethernet cable to the monitor's docking station. Simply connect your notebook to this monitor with a single USB-C cable to watch high-resolution video and transfer super-speed data while powering up and recharging your notebook at the same time.

Power and re-charge notebook

This monitor features a built-in USB-C connector that meets USB Power Delivery standard. With intelligent and flexible power management, you can now power up and/or re-charge your compatible* Notebook directly from the Monitor using a single USB-C cable.

High Dynamic Range (HDR)



High Dynamic Range delivers a dramatically different visual experience. With astonishing brightness, incomparable contrast and captivating colour, images come to life with much greater brightness while also featuring much deeper, more nuanced darks. It renders a fuller palette of rich new colours never before seen on a display, giving you a visual experience that engages your senses and inspires emotions.

Ultra Wide-Color Technology



Ultra Wide-Color Technology delivers a wider spectrum of colours for a more brilliant picture. The Ultra Wide-Color wider "colour gamut" produces more natural-looking greens, vivid reds and deeper blues. Bring media entertainment, images and even productivity more alive with vivid colours from Ultra Wide-Color Technology.

10-bit colours

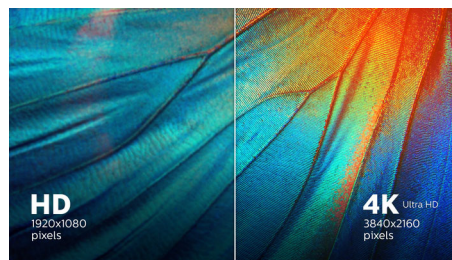


8-bit

10-bit

The 10-bit display delivers rich colour depth with 1.074 billion colours and 12-bit internal processing for recreating smooth, natural colours without gradations and colour banding.

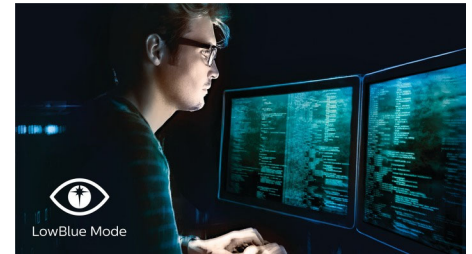
UltraClear 4K UHD Resolution



These Philips displays utilise high-performance panels to deliver UltraClear, 4K UHD (3840 x 2160) resolution images. Whether you are a demanding professional requiring extremely detailed images for CAD solutions, a user of 3D graphics applications or a financial wizard

working on huge spreadsheets, Philips displays will make your images and graphics come alive.

LowBlue Mode

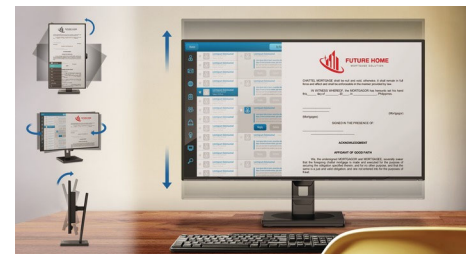


Studies have shown that just as ultra-violet rays can cause eye damage, shortwave-length blue light rays from LED displays can cause eye damage and affect vision over time. Developed for wellbeing, the Philips LowBlue Mode setting uses a smart software technology to reduce harmful shortwave blue light.

MultiView technology

With the ultra-high resolution Philips MultiView display, you can now experience a world of connectivity. MultiView enables active dual connect and view so that you can work with multiple devices like a PC and notebook simultaneously, for complex multitasking.

SmartErgoBase



The SmartErgoBase is a monitor base that delivers ergonomic display comfort and provides cable management. The user-friendly height, swivel, tilt and rotation angle adjustments of the base allow the monitor to be positioned for maximum comfort to help ease the physical strains of a long workday. In addition, cable management reduces cable clutter and keeps the workspace neat and professional.



USB-C Docking



VESA CERTIFIED DisplayHDR 600



4K Ultra HD



LowBlue Mode



MultiView



SmartErgo Base



Ethernet



Built-in Speaker

Specifications

Picture/Display

- LCD panel type: VA LCD
- Backlight type: W-LED system
- Panel Size: 31.5 inch/80 cm
- Display Screen Coating: Anti-Glare, 3H, Haze 25%
- Effective viewing area: 698.4 (H) x 392.85 (V)
- Aspect ratio: 16:9
- Optimum resolution: 3840 x 2160 @ 60 Hz
- Pixel Density: 139.87 PPI
- Response time (typical): 4 ms (Grey to Grey)*
- Brightness: 600 cd/m² (peak)* nit
- Contrast ratio (typical): 3000:1
- SmartContrast: 80,000,000 :1
- Pixel pitch: 0.181 x 0.181 mm
- Viewing angle: 178° (H)/178° (V), @ C/R > 10
- Flicker-free
- Picture enhancement: SmartImage
- Display colours: Colour support 1.07 billion colours
- Colour gamut (min.): BT. 709 Coverage: 100%*; DCI-P3 Coverage: 98%*
- Colour gamut (typical): NTSC 116%*, sRGB 138%*, Adobe RGB 94%*
- HDR: DisplayHDR 600 (DP/HDMI)
- Scanning Frequency: 30 - 160 kHz (H) / 23 - 80 Hz (V)
- SmartUniformity: 95% ~ 103%
- Delta E: < 2
- sRGB
- LowBlue Mode
- EasyRead

Connectivity

- Signal Input: DisplayPort 1.4 x 1, HDMI 2.0 x 2, USB-C 3.1 Gen 1 x 1 (upstream, power delivery up to 65 W), USB 3.0 x 4 (downstream, 1 w/fast charging BC 1.2)*
- Sync Input: Separate Sync, Sync on Green
- Audio (In/Out): PC audio-in, Headphone out
- RJ45: Ethernet LAN up to 1G*

USB

- USB-C: Reversible plug connector
- Super speed: Data and Video transfer
- DP: Built-in Display Port Alt mode
- Power delivery: USB PD version 2.0
- USB-C max. power delivery: Up to 65 watts (5V/3A; 7V/3A; 9V/3A; 12V/3A; 15V/3A; 20V/3A)

Convenience

- Built-in Speakers: 3 W x 2
- MultiView: PIP/PBP mode, 2 x devices
- User convenience: SmartImage, Multi-view, User, Menu, Power On/Off
- Control software: SmartControl
- OSD Languages: Brazil Portuguese, Czech, Dutch,

- English, Finnish, French, German, Greek, Hungarian, Italian, Japanese, Korean, Polish, Portuguese, Russian, Simplified Chinese, Spanish, Swedish, Traditional Chinese, Turkish, Ukrainian
- Other convenience: Kensington lock, VESA mount (100 x 100 mm)
- Plug and Play Compatibility: DDC/CI, Mac OS X, sRGB, Windows 10 / 8.1 / 8 / 7

Stand

- Height adjustment: 180 mm
- Pivot: 90 degree
- Swivel: -170/+170 degree
- Tilt: -5/20 degree

Power

- ECO mode: 34.6 W (typ.)
- Energy Label Class: G
- On mode: 39.73 W (EnergyStar test method)
- Standby mode: < 0.5 W (typ.)
- Off mode: Zero watts with Zero switch
- Power LED indicator: Operation - White, Standby mode - White (flashing)
- Power supply: Built-in, 100–240 VAC, 50–60 Hz

Dimensions

- Product with stand (max height): 742 x 657 x 270 mm
- Product without stand (mm): 742 x 438 x 63 mm
- Packaging in mm (W x H x D): 970 x 526 x 224 mm

Weight

- Product with stand (kg): 9.36 kg
- Product without stand (kg): 6.40 kg
- Product with packaging (kg): 13.26 kg

Operating conditions

- Temperature range (operation): 0°C to 40°C °C
- Temperature range (storage): -20°C to 60°C °C
- Relative humidity: 20%-80 %
- Altitude: Operation: +12,000 ft (3658 m), Non-operation: +40,000 ft (12,192 m)
- MTBF (demonstrated): 70,000 hrs (excluded backlight)

Sustainability

- Environmental and energy: EnergyStar 8.0, EPEAT*, TCO Certified Edge, WEEE, RoHS
- Recyclable packaging material: 100 %
- Post-consumer recycled plastic: 65%
- Specific Substances: PVC/BFR free housing, Mercury free

Compliance and standards

- Regulatory Approvals: CB, EPA, cETLus, FCC Class B, ICES-003, CE Mark, TUV/ISO9241-307,

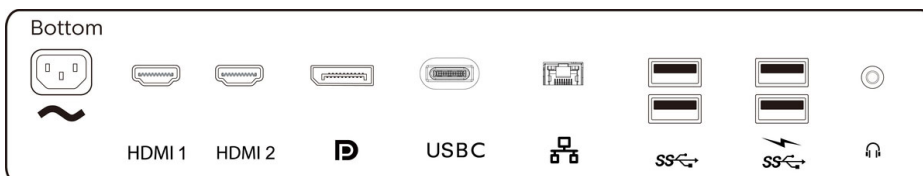
SEMKO, CU-EAC, UKRAINIAN

Cabinet

- Front bezel: Black
- Rear cover: Black
- Foot: Black
- Finish: Texture

What's in the box?

- Monitor with stand
- Cables: DP cable, HDMI cable, USB-C to USB-C cable, USB-C to USB-A cable, Power cable
- User Documentation



Issue date 2022-05-15

Version: 9.1.2

12 NC: 8670 001 55304
EAN: 87 12581 75285 9

© 2022 Koninklijke Philips N.V.
All Rights reserved.

Specifications are subject to change without notice.
Trademarks are the property of Koninklijke Philips N.V.
or their respective owners.

www.philips.com

- * For Video transmission via USB-C, your Notebook/device must support USB-C DP Alt mode
- * For USB-C power and charging function, your Notebook/device must support USB-C standard Power Delivery specifications. Please check with your Notebook user manual or manufacturer for more details.
- * Activities such as screen sharing and online streaming over the Internet can impact your network performance. Your hardware and network bandwidth will determine the overall audio and video quality.
- * Response time value equal to SmartResponse
- * Brightness (typical): 400 cd/m²
- * BT. 709 / DCI-P3 Coverage based on CIE1976
- * NTSC Area based on CIE 1976
- * sRGB Area based on CIE1931
- * Adobe RGB Coverage based on CIE 1976
- * If your Ethernet connection seems slow, please enter the OSD menu and select USB 3.0 or a higher version that can support the LAN speed up to 1G.
- * EPEAT rating is valid only where Philips registers the product. Please visit <https://www.epeat.net/> for registration status in your country.
- * The monitor may look different from feature images.