

Fujitsu recommends Windows 10 Pro for business.

# Data Sheet

## FUJITSU Notebook LIFEBOOK U7511

### Ultra-Mobile Meets Ultra Secure

The FUJITSU Notebook LIFEBOOK U7511 is a slim notebook, based on the 11th generation Intel® Core™ processor, for business professionals. The 15.6-inch screen, light weight of 1.5 kg, Intel® Thunderbolt™ 4 ports enables it to provide portability. With the outstanding security with the PalmSecure™ makes the notebook to perfect choice in today's modern workstyle.

#### Elegant design and enjoyable mobility

Manage your workday with premium notebooks providing ultimate convenience to maximize your productivity

- The remarkably slim 18.1 mm ultra-mobile notebook weighs only 1.5 kg.
- Enjoy the Intel® Iris® Xe Graphics with a FHD or HD display.
- The outdoor-friendly anti-glare FHD touch panel (optional) comes with a narrow bezel design and complete magnesium warm silver housing.

#### Excellent security

Enhance your security with outstanding features to best protect your notebook and company data

- Integrated PalmSecure™ or finger print sensor
- Infrared Camera: Allows face recognition with Windows Hello
- Built-in Privacy Camera Shutter: Protecting your privacy
- SmartCard reader and TPM 2.0

#### Premium connectivity

Stay flexible and productive within a modern workplace environment

- Compact and versatile Intel® Thunderbolt™ 4 USB Type-C connector to charge your laptop, transfer files at fast speeds, connect external monitors and other peripherals
- Full set of interfaces with full-size LAN connector, full-size HDMI and USB Type-C
- Embedded 4G or 5G/LTE

#### Convenient upgradeability

Direct access to key components reduces upgrade time and costs

- Battery, memory and internal storage is hidden under a service door

#### Family concept

Reduce your acquisition cost as well as the complexity of your IT equipment

- Shared components such as the same new classic or USB Type-C port replicator, AC Adapter, BIOS and Bit Image across the ultra-mobile LIFEBOOK U7 family



# Components

Base unit	LIFEBOOK U7511
Operating system preinstalled	
Operating system pre-installed	Windows 10 Pro. Fujitsu recommends Windows 10 Pro for business. Windows 10 Home
Operating system notes	Windows 10 Support: After the end of the product life FUJITSU will continue to test and support all upcoming Windows 10 releases for a period of maximum 5 years – depending on the available extension of hardware services through FUJITSU Warranty top ups. For details please see “FUJITSU Service Statement for Windows 10 Semi-Annual-Channel Support” at <a href="http://support.ts.fujitsu.com">http://support.ts.fujitsu.com</a> .
<b>Processor</b>	Intel® Core™ i7-1185G7 processor (4 Cores / 8 Threads, up to 4.8 GHz) Intel® Core™ i7-1165G7 processor (4 Cores / 8 Threads) * Intel® Core™ i5-1145G7 processor (4 Cores / 8 Threads) Intel® Core™ i5-1135G7 processor (4 Cores / 8 Threads) * Intel® Core™ i3-1125G4 processor (4 Cores / 8 Threads) *  *Processor only for retail, SMB, education and government
<b>Memory modules</b>	4 GB (1 module(s) 4 GB) DDR4, 3,200 MT/s, SO DIMM 8 GB (1 module(s) 8 GB) DDR4, 3,200 MT/s, SO DIMM 16 GB (1 module(s) 16 GB) DDR4, 3,200 MT/s, SO DIMM 32 GB (1 module(s) 32 GB) DDR4, 3,200 MT/s, SO DIMM
<b>Hard disk drives (internal)</b>	PCIe-SSD, 512 GB M.2 NVMe module, SED PCIe-SSD, 256 GB M.2 NVMe module, SED PCIe-SSD, 256 GB M.2 NVMe module PCIe-SSD, 1 TB M.2 NVMe module, SED
Hard disk notes	Accessible capacity may vary, also depending on used software.
<b>Interface add on cards/components (optional)</b>	
3G/4G (optional)	LTE Sierra Wireless EM7421 (Cat.7) (Downlink speed up to 300 Mbit/s, Uplink speed up to 150 Mbit/s)
4G/5G (optional)	LTE Sierra Wireless EM9191 (Downlink speed up to 4.5 Gbit/s MB/s, Uplink speed up to 660 Mbit/s)
<b>Display</b>	39.6 cm (15.6-inch),LED backlight,(Full HD),Anti-glare IPS touchscreen,magnesium,1,920 x 1,080 pixel,700:1,260 cd/m <sup>2</sup> 39.6 cm (15.6-inch),LED backlight,(Full HD),Anti-glare IPS display,magnesium,1,920 x 1,080 pixel,700:1,300 cd/m <sup>2</sup>
<b>Multimedia</b>	
Camera	Built-in webcam (HD) with Status LED Built-in Infrared webcam (HD) with Status LED
Camera notes	720p, 1 megapixels, 1280 x 720 720p, 1 megapixels, 1280 x 720, with Privacy Camera Shutter
Microphone	dual digital array microphone

## Base unit

Base unit	LIFEBOOK U7511
<b>General system information</b>	
Chipset	Integrated
Supported capacity RAM (min.)	4 GB
Supported capacity RAM (max.)	64 GB
Memory slots	2 SO DIMM (DDR4, 3200 MHz)

**General system information**

Memory notes	Dual channel support
LAN	10/100/1,000 MBit/s Intel® I219LM
Integrated WLAN	Intel WiFi 6 AX201
BIOS version	UEFI Specification 2.7
BIOS features	InsydeH2O BIOS
Audio type	On board
Audio codec	Realtek ALC255
Audio features	2x built-in speakers (stereo)

**Display**

Display notes	FHD - Viewing angle: Left/Right 89°, Top 89°, Bottom 89°; Color Gamut: 72%; Response Time 30ms Touch - Viewing angle: Left/Right 85°, Top 85°, Bottom 85°; Color Gamut: 45%; Response Time 25ms
Brightness - typical	FHD: 300 cd/m <sup>2</sup> - Touch: 250 cd/m <sup>2</sup>
Contrast - typical	FHD: 1000:1 - Touch: 700:1

**Graphics**

Base unit	LIFEBOOK U7511
TFT resolution (HDMI)	Up to 4,096 x 2,160 pixel (30 Hz)
Graphics brand name	Intel® UHD Graphics (with Single channel memory), Intel® Iris® Xe Graphics (with Dual channel memory)
Graphics features	3 Display Support DirectX® 12 OpenGL® 4.5
Graphics notes	Shared memory depending on main memory size and operating system

**Interfaces**

Audio: line-out / headphone	1 (combo port with Audio line-in)
Audio: line-in / microphone	1 (combo port with Audio line-out)
Internal microphones	2x digital array microphones (optional)
USB 3.2 Gen 1 (5 Gbps) total	3x Type-A (1 with Anytime USB charge functionality)
USB 4.0 Gen 3 (20 Gbps) total	2x Type-C Intel® Thunderbolt™ 4 (with Power Delivery functionality)
USB Type-C	USB 4.0 Gen3 (20 Gbps), Intel® Thunderbolt™ 4 (40Gbps), Power Delivery (15W), DP out
DisplayPort	1 (via USB Type-C adapter) - v1.4
HDMI	1 v2.0
Ethernet (RJ-45)	1 (with status LED)
Memory card slots	1 SD 3.0 Standard SD/microSD card SDHC/microSDHC card SDXC/microSDXC card Speed Class: up to UHS-I
SmartCard slot	1 (optional)
SIM card slot	1 (Micro-SIM, only for models with integrated 4G/5G LTE module)
Docking connector for Port Replicator	1
Kensington Lock support	1

**Port Replicator interfaces (optional)**

	Thunderbolt™ 4 PR	Model: tbd	USB Type-C PR	Thunderbolt™ 3 PR
DC-in	1 (20V/170W required)	1 (19V/90W required)	1 (19V/90W required)	1 (20V/170W required)
Power on switch	1	1	1	1
Audio: headphone	---	1	---	---
Audio: microphone	---	1	---	---
Audio: comments	1 Combo jack for headset usage	---	1 Combo jack for headset usage	1 Combo jack for headset usage
USB 3.2 Gen 1 (5 Gbps) total	---	4x Type-A 2x Type-C	---	---
DisplayPort	2 (up to 2560 x 1600), DP 1.4	2 (up to 2x 3840x2160 60Hz)	1 (up to 2560 x 1600)	2 (up to 2560 x 1600)

**Port Replicator interfaces (optional)**

VGA	---	1 (up to 1920x1200 6Hz)	1 up to 1920x1200 @ 60Hz depending on FJ mobile client	---
HDMI text	1	1x HDMI v1.4b	1	1
Interface Notes	2x Type-A - 5V/0.9A, 4.5W 1x Type-A - 5V/2.4A, 12W 2x Type-C - 5V, 1.5A, 4.5W charging port 1x Type-C - TBT4 up to 60 W (PD v2.0-1.1), 5-20V, 3.0A upstream (PC) 1x Type-C - TBT4 up to 15 W (PD v2.0-1.1), 5V, 3.0A downstream, power output to client	---	3x Type-A - 5V/0.9A, 4.5W 1x Type-C - 15W 1x Type-C - Up to 60 W (PD v2.0-1.1) power output to client or 4.5W input	2x Type-A - 5V/0.9A, 4.5W 1x Type-A - 5V/2.4A, 12W 2x Type-C - 5V, 1.5A, 4.5W charging port 1x Type-C - TBT3 up to 60 W (PD v2.0-1.1), 5-20V, 3.0A upstream (PC) 1x Type-C - TBT3 up to 15 W (PD v2.0-1.1), 5V, 3.0A downstream, power output to client
Kensington Lock support	1	---	no	1
Notes	RJ-45:10/100/1000 MBits/s LAN WoL from S3 state WoL from S4 / S5 / G3 state depending on Fujitsu mobile client PXE launching for dedicated FJ mobile clients Set the MAC address by the user MAPT from 10th gen	1 RJ45 (10/100/1000)	1 RJ45 (10/100/1000) WoL from S3 state WOL from S4 / S5 / G3 depending on Fujitsu mobile client Launch of PXE for dedicated FJ mobile clients Set the MAC address by the user MAPT from 9th gen	RJ-45:10/100/1000 MBits/s LAN WoL from S3 state WoL from S4 / S5 / G3 state depending on Fujitsu mobile client PXE launching for dedicated FJ mobile clients Set the MAC address by the user MAPT from 9th gen

**Keyboard and pointing devices**

	Keyboard w/o touchstick (spill-resistant), Backlight keyboard w/o touchstick Number of keyboard keys: 106, Keyboard pitch: 18.4 mm, Keyboard stroke: 1.7 mm Multi gesture touchpad with two mouse buttons Status LED Power Button
Antennas	2 Dual band WLAN antennas, 2+2 LTE antennas optional
Bluetooth	v5.1
Integrated WLAN	Intel WiFi 6 AX201
WLAN encryption	WPA/WPA2/WPA3 (Wi-Fi Protected Access)
WLAN notes	Import and usage according to country-specific regulations.
Integrated LTE or UMTS	LTE Sierra Wireless EM7421 (cat.7) LTE Sierra Wireless EM9191 (5G)
LTE/UMTS/GPS notes	Including GPS functionality Import and usage according to country-specific regulations. LTE Connection Manager (if configured with 4G/LTE)
GPS	Embedded in 4G/5G module if configured with WWAN
AC Adapter	
1st battery options	Lithium polymer battery 4-cell, 65 Wh
1st battery	
Battery features	Quick Charge: 80% in 1h
Battery notes	Battery runtime information is based on worldwide acknowledged BAPCo® MobileMark® 2018. Refer to <a href="http://www.bapco.com">www.bapco.com</a> for additional details. The BAPCo® MobileMark® Benchmark provides results that enable direct product comparisons between manufacturers. It does not guarantee any specific battery runtime which actually can be lower and may vary depending on product model, configuration, application and power management settings. The battery capacity decreases slightly with every re-charge and over its lifetime.

**Noise emission**

Noise emission	Please refer to the Eco Declaration
----------------	-------------------------------------

**Dimensions / Weight / Environmental**

Dimensions (W x D x H)	357 x 230 x 18.1 mm 14.06 x 9.06 x 0.71 inch
Weight	from 1.5 kg
Weight (lbs)	from 3.30 lbs
Weight notes	Weight may vary depending on actual configuration
Operating ambient temperature	5 - 35 °C (41 - 95 °F)
Operating relative humidity	20 - 80 %
Product	LIFEBOOK U7511
Model	7U15A2
Germany	GS planned (Full HD Display only)
Europe	CE CB
USA/Canada	FCC (depending on configuration) (planned)
Global	RoHS (Restriction of hazardous substances) WEEE (Waste electrical and electronic equipment) Microsoft Operating Systems (HCT / HCL entry / WHQL) TCO Certified 8.0 ENERGY STAR® 8.0 MIL-STD testing in progress EPEAT® Silver (dedicated regions), depending on configuration
China	CCC (planned)
Compliance link	<a href="https://sp.ts.fujitsu.com/sites/certificates">https://sp.ts.fujitsu.com/sites/certificates</a>

**Additional Software**

Additional software (preinstalled)	Fujitsu Plugfree Network (network management utility) Fujitsu Anytime USB Charge Utility Fujitsu Battery Utility Fujitsu Function Manager Fujitsu DeskUpdate (driver and utility tool)
Additional software (optional)	Recovery DVD for Windows® Drivers & Utilities DVD (DUDVD) CyberLink YouCam (webcam software) Microsoft® Office Professional 2019 Microsoft® Office Home and Business 2019 (A Microsoft Account is required to activate each copy of these products. For purchase and activation only in the region in which it was acquired.)
Manageability technology	DeskUpdate Driver management PXE 2.1 Boot code Wake up from S5 (off mode) WoL (Wake on LAN) Intel® vPro™ technology
Manageability software	DeskView Client DeskView Instant BIOS Management
DeskView components	Inventory Management BIOS Management Driver Management Security Management Alarm Management
Supported standards	WMI (Windows Management Instrumentation) PXE (Preboot Execution Environment) DMI (Desktop Management Interface) SMBIOS (System Management BIOS) CIM (Common Information Model) BootP (made4you)
Manageability link	<a href="http://www.fujitsu.com/fts/manageability">http://www.fujitsu.com/fts/manageability</a>

**Warranty**Warranty Terms & Conditions <http://www.fujitsu.com/warranty>**Product Support Services - the perfect extension**

Recommended Service 9x5, Onsite Response Time: Next Business Day

Service Weblink <http://www.fujitsu.com/emeia/products/product-support-services/>

## Recommended Accessories

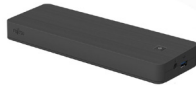
Port Replicator for LIFEBOOK U7411 and U7511



Flexibility, expandability, desktop replacement, investment protection – to name just a few benefits of Fujitsu's docking options.

Order Code:  
FPCPR402BP

USB Type-C Port Replicator 2



Connect to your peripherals. Adapt to the task on demand. The universal USB Type-C connection helps you to get your peripheral devices connected easily. Enhance your USB connection options, connect your displays via HDMI, DisplayPort or VGA and charge your device without an additional charger.

Weight: 334 g, Dimensions: 219 x 75 x 22.9 (front) – 26.0 (back) mm, including 90W AC adapter and Type C cable

Order Code:  
S26391-F3327-L100

Thunderbolt™ 3 Port Replicator



One cable, many capabilities - Connect, save space, and keep your desk tidy. With Thunderbolt™ 3 you can connect almost everything with only one cable and in highspeed. Enhance your USB connection options, connect your displays via Thunderbolt™ 3, HDMI, DisplayPort and charge your device without an additional charger. Thunderbolt™ 3 allows you to connect even highspeed devices in a most convenient way.

Weight: 440 g, Dimensions: 239 x 80 x 26 mm, including 170W AC adapter and TBT cable

Order Code:  
S26391-F3357-L100

Battery 4 cell 65 Wh



The 4 cell 65 Wh battery has a the recharge time of the cell is 60 minutes for a 80% charge.

Order Code:  
FPCBP592BP

## More information

### Fujitsu products, solutions & services

In addition to FUJITSU Notebook LIFEBOOK U7511, Fujitsu provides a range of platform solutions. They combine reliable Fujitsu products with the best in services, know-how and worldwide partnerships.

#### Fujitsu Portfolio

Build on industry standards, Fujitsu offers a full portfolio of IT hardware and software products, services, solutions and cloud offering, ranging from clients to datacenter solutions and includes the broad stack of Business Solutions, as well as the full stack of Cloud offering. This allows customers to leverage from alternative sourcing and delivery models to increase their business agility and to improve their IT operation's reliability.

#### Computing Products

[www.fujitsu.com/global/products/computing/](http://www.fujitsu.com/global/products/computing/)

#### Software

[www.fujitsu.com/software/](http://www.fujitsu.com/software/)

### More information

Learn more about FUJITSU Notebook LIFEBOOK U7511, please contact your Fujitsu sales representative or Fujitsu Business partner, or visit our website.  
[www.fujitsu.com/emeia/products/computing/pc/notebooks/index.html](http://www.fujitsu.com/emeia/products/computing/pc/notebooks/index.html)

### Fujitsu green policy innovation

Fujitsu Green Policy Innovation is our worldwide project for reducing burdens on the environment.

Using our global know-how, we aim to contribute to the creation of a sustainable environment for future generations through IT.

Please find further information at <http://www.fujitsu.com/global/about/environment>



### Copyrights

All rights reserved, including intellectual property rights. Designations may be trademarks and/or copyrights of the respective owner, the use of which by third parties for their own purposes may infringe the rights of such owner. For further information see <http://www.fujitsu.com/emeia/resources/navigation/terms-of-use.html>

Copyright 2021 Fujitsu Technology Solutions GmbH

### Disclaimer

Technical data is subject to modification and delivery subject to availability. Any liability that the data and illustrations are complete, actual or correct is excluded. Designations may be trademarks and/or copyrights of the respective owner, the use of which by third parties for their own purposes may infringe the rights of such owner.

#### Contact

Fujitsu Technology Solutions GmbH  
Website: [www.fujitsu.com](http://www.fujitsu.com)  
2021-03-26 EM-EN

All rights reserved, including intellectual property rights. Designations may be trademarks and/or copyrights of the respective owner, the use of which by third parties for their own purposes may infringe the rights of such owner. For further information see <http://www.fujitsu.com/emeia/resources/navigation/terms-of-use.html>  
Copyright 2021 Fujitsu Technology Solutions GmbH