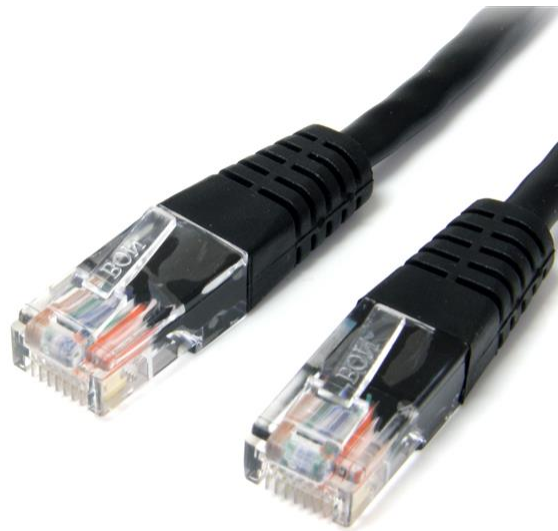


Cat5e Patch Cable with Molded RJ45 Connectors - 1 ft. - Black

Product ID: M45PATCH1BK



The M45PAT1BK Cat5e Patch Cable (1 ft) meets or exceeds all Cat 5e specifications to ensure reliable Ethernet network connections, and features a durable black PVC jacket that enables you to color code your network cable runs as needed.

To ensure long-lasting performance, this high quality Cat5e patch cable features molded PVC strain relief that prevents the RJ45 connector termination points from bending at sharp angles - reducing the risk of cable damage, which could decrease network performance.

Constructed of only top quality materials, this Cat5e Patch Cord delivers reliable performance and is backed by our Lifetime Warranty.

StarTech.com Cat5e cables are manufactured using high-quality copper conductors. While many cable manufacturers offer a "cheaper" cable, based on a copper-coated aluminum core, we make no compromises on quality to ensure you receive top value and performance for your network cable investment.

This Cat 5e cable is constructed with 24 gauge copper wire, to support a broad range of Ethernet applications such as Power over Ethernet (PoE). Because we use a high quality copper wire, our cables easily sustain the power required for Power over Ethernet applications, whereas the inferior quality offered by copper-coated aluminum cables may be subject to insufficient power delivery, heat buildup, equipment damage and potentially, fire.

This molded patch cable offers high quality connectors comprised of 50-micron gold, to deliver optimum conductivity while eliminating signal loss due to oxidation or corrosion.

Certifications, Reports and Compatibility



Applications

- Designed for use with Fast Ethernet networks
- Patches from hub to distribution panel
- Connects workstation to wall outlet

Features

- Molded RJ45 connectors
- Carefully constructed and tested, to keep Near End Crosstalk (NEXT) well within acceptable limits
- Colored hoods for departmental color coding
- Constructed with top quality components
- High quality 24 AWG copper wire

Hardware	Warranty	90 Days
	Anzahl von Leitern	4 Pair UTP
	Typ der Kabelummantelung	PVC - Polyvinyl Chloride
	Feuerwiderstandssklasse	CMG Rated (General Purpose)
	Kabeltyp	Molded
	Verkabelungsstandard	TIA/EIA-568-B.1-2001 T568B
Leistung	Kabelnennwerte	CAT5e - 350 MHz
Steckverbinder	Steckverbinder A	RJ-45
	Steckverbinder B	RJ-45
Physische Eigenschaften	Farbe	Black
	Drahtstärke	24 AWG
	Leitungstyp	Stranded Copper
	Kabellänge	12.0 in [3.0 cm]
	Produktlänge	12.0 in [3.0 cm]
	Produktgewicht	0.6 oz [17 g]
Verpackungsinformationen	Package Length	8.7 in [2.2 cm]
	Package Width	7.9 in [2 cm]
	Package Height	0.4 in [10 mm]
	Versandgewicht (Verpackung)	0.9 oz [26 g]

Verpackungsinhalt Im Paket enthalten 1 ft. Cat5e Patch Cable - Black
halt

**Product appearance and specifications are subject to change without notice.*

