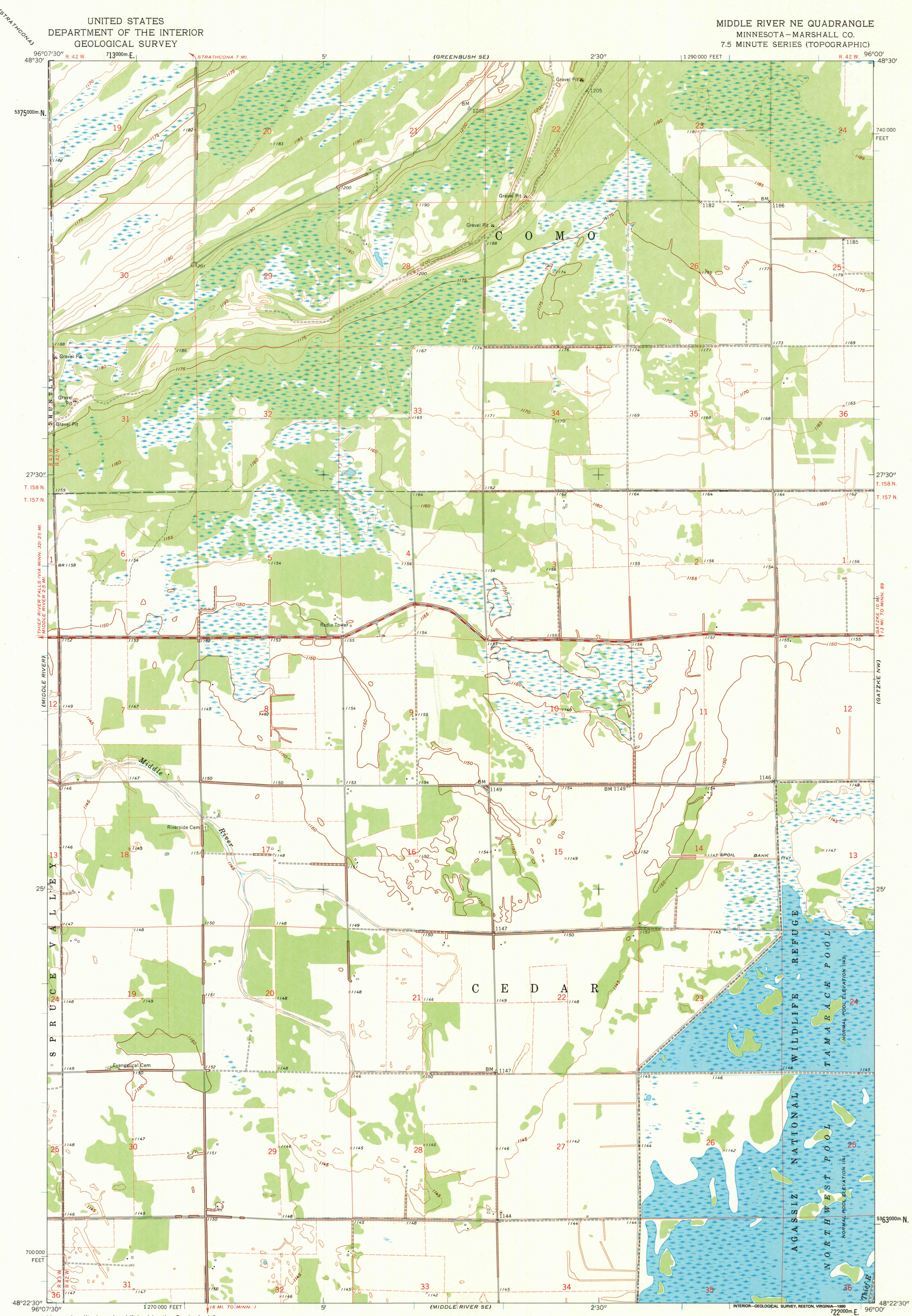


UNITED STATES  
DEPARTMENT OF THE INTERIOR  
GEOLOGICAL SURVEY

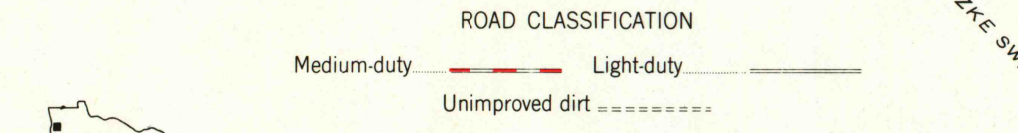
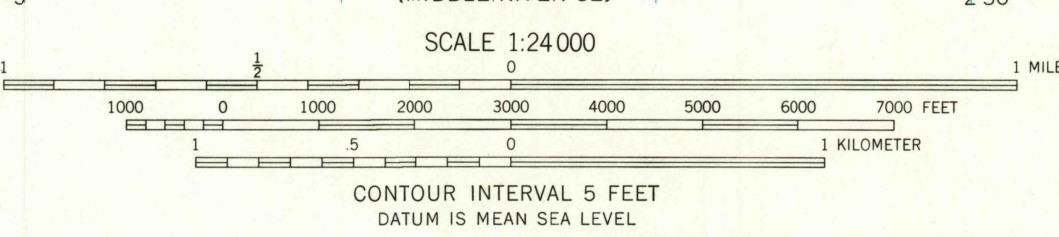
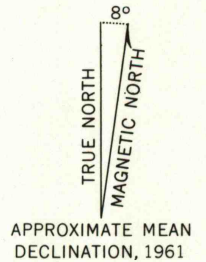
MIDDLE RIVER NE QUADRANGLE  
MINNESOTA—MARSHALL CO.  
7.5 MINUTE SERIES (TOPOGRAPHIC)



Mapped, edited, and published by the Geological Survey  
Control by USGS and USC&GS

Planimetry by photogrammetric methods from aerial photographs  
taken 1954. Topography by planetable surveys 1961  
Polyconic projection. 1927 North American datum  
10,000-foot grid based on Minnesota coordinate system, north zone  
1000-meter Universal Transverse Mercator grid ticks,  
zone 14, shown in blue

Fine red dashed lines indicate selected fence and field lines where  
generally visible on aerial photographs. This information is unchecked  
Map photoinspected 1982  
No major culture or drainage changes observed



MIDDLE RIVER NE, MINN.  
N4822.5—W9600/7.5

1961  
PHOTOINSPECTED 1982

THIS MAP COMPLIES WITH NATIONAL MAP ACCURACY STANDARDS  
FOR SALE BY U. S. GEOLOGICAL SURVEY  
DENVER, COLORADO 80225, OR RESTON, VIRGINIA 22082  
A FOLDER DESCRIBING TOPOGRAPHIC MAPS AND SYMBOLS IS AVAILABLE ON REQUEST

USGS MND HISTORICAL MAP  
MAY 14 1990  
REC'D FILE COPY