

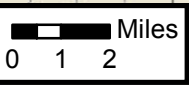
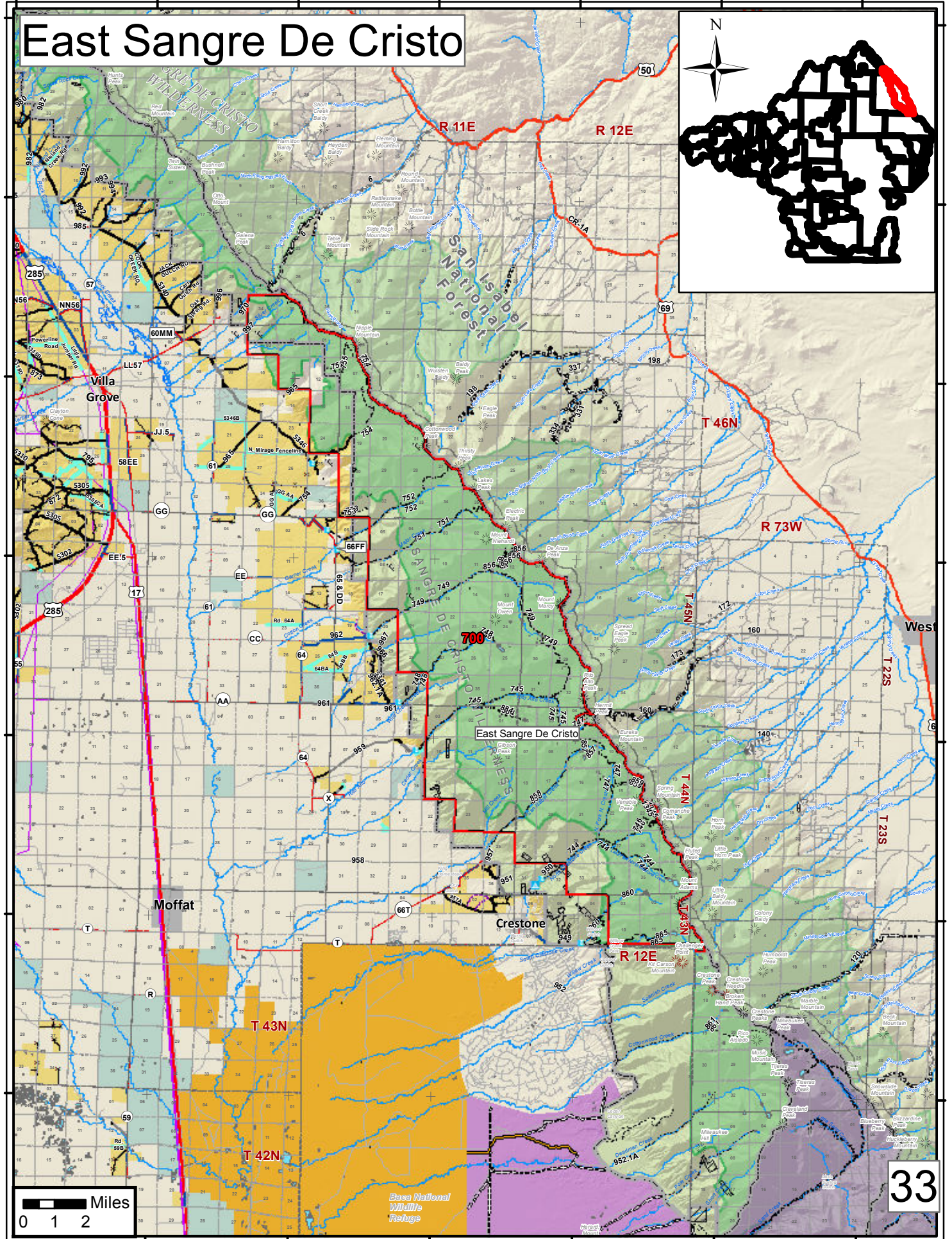
106°0'0"W 105°55'0"W 105°50'0"W 105°45'0"W 105°40'0"W 105°35'0"W 105°30'0"W

# East Sangre De Cristo



38°20'0"N  
38°15'0"N  
38°10'0"N  
38°5'0"N  
38°0'0"N  
37°55'0"N

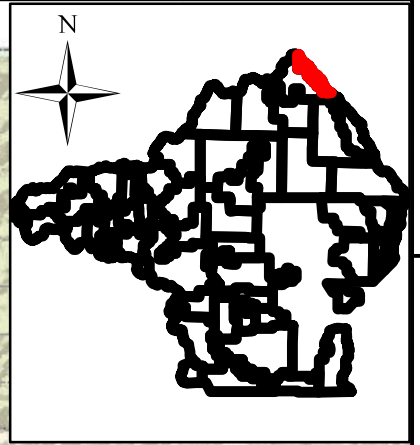
38°25'0"N  
38°20'0"N  
38°15'0"N  
38°10'0"N  
38°5'0"N  
38°0'0"N  
37°55'0"N



33

105°55'0"W 105°50'0"W 105°45'0"W 105°40'0"W 105°35'0"W 105°30'0"W

# North Sangre De Cristo



38°35'0"N

38°30'0"N

38°25'0"N

38°20'0"N

38°15'0"N

38°10'0"N

38°35'0"N

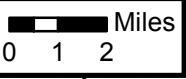
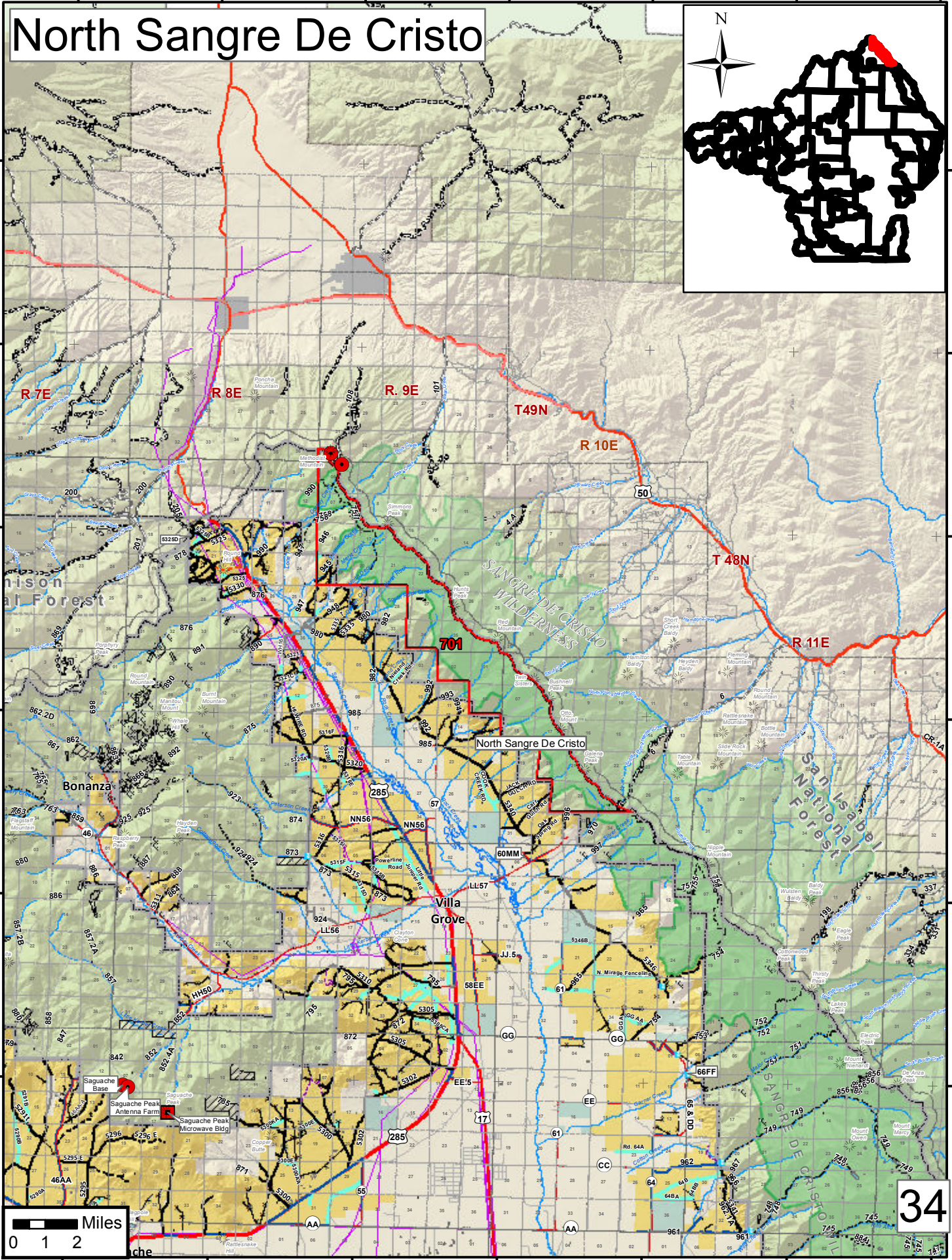
38°30'0"N

38°25'0"N

38°20'0"N

38°15'0"N

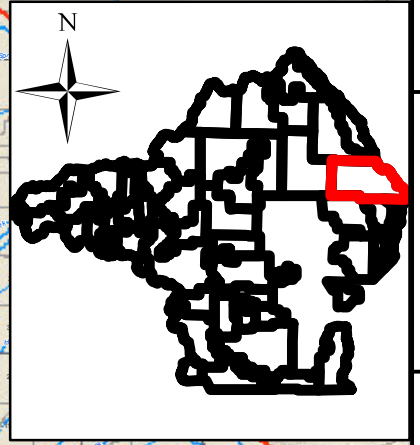
38°10'0"N



34

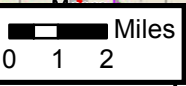
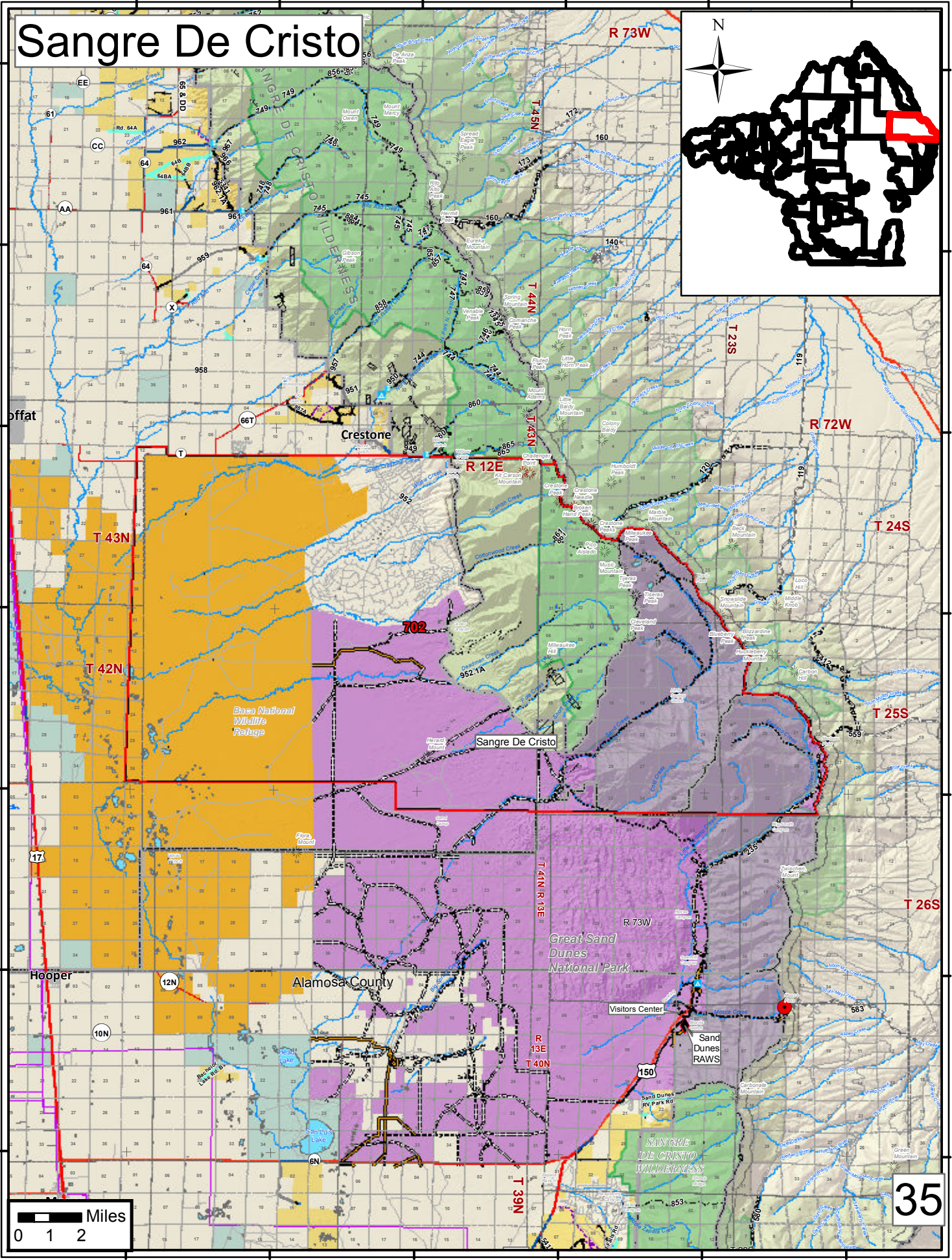
105°50'0"W 105°45'0"W 105°40'0"W 105°35'0"W 105°30'0"W 105°25'0"W

# Sangre De Cristo



38°10'0"N  
38°5'0"N  
38°0'0"N  
37°55'0"N  
37°50'0"N  
37°45'0"N  
37°40'0"N

38°10'0"N  
38°5'0"N  
38°0'0"N  
37°55'0"N  
37°50'0"N  
37°45'0"N  
37°40'0"N

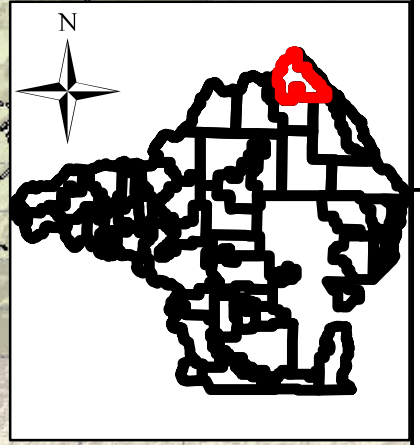


35

105°50'0"W 105°45'0"W 105°40'0"W 105°35'0"W 105°30'0"W 105°25'0"W

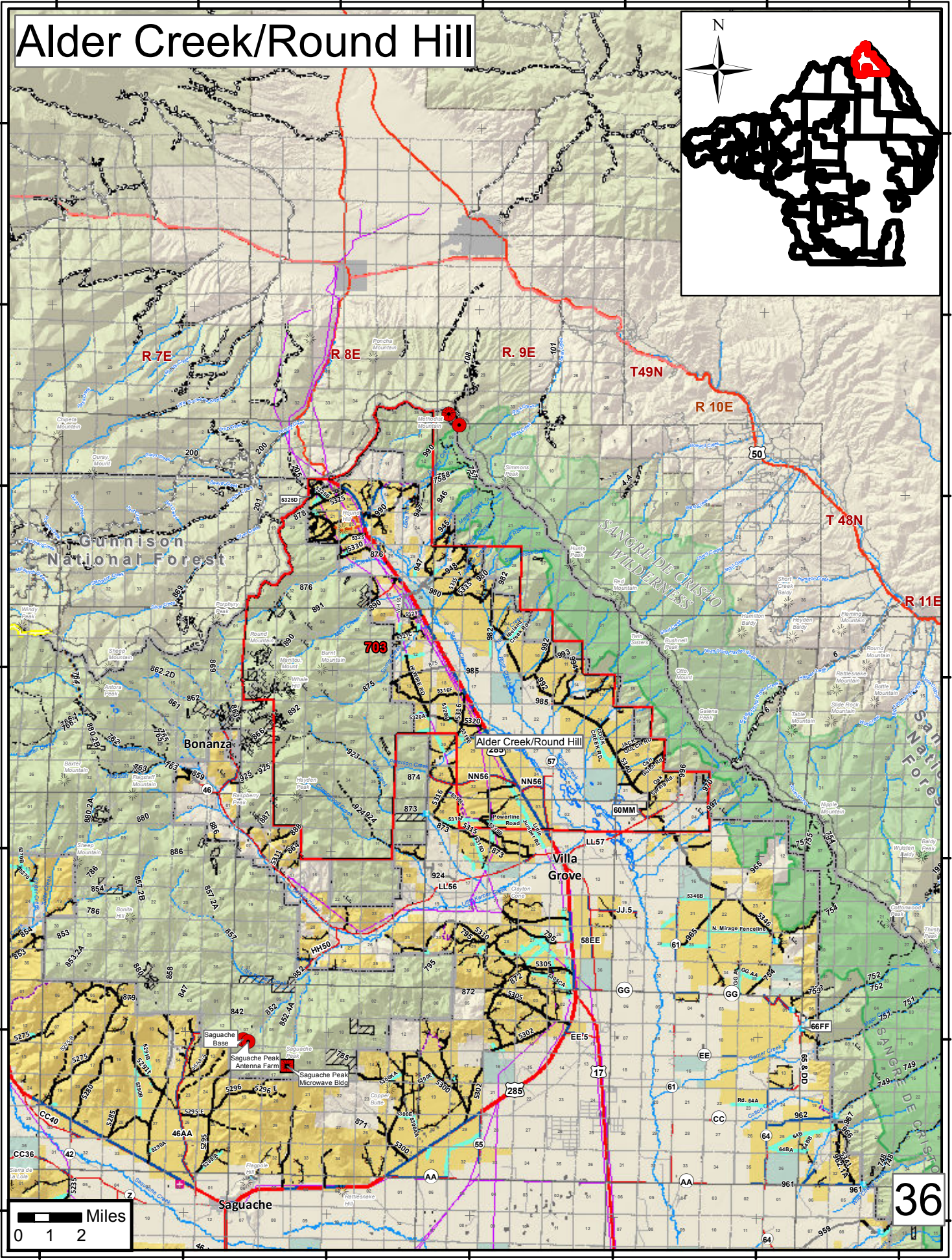
106°15'0"W 106°10'0"W 106°5'0"W 106°0'0"W 105°55'0"W 105°50'0"W 105°45'0"W

# Alder Creek/Round Hill



38°35'0"N  
38°30'0"N  
38°25'0"N  
38°20'0"N  
38°15'0"N  
38°10'0"N  
38°5'0"N

38°35'0"N  
38°30'0"N  
38°25'0"N  
38°20'0"N  
38°15'0"N  
38°10'0"N  
38°5'0"N

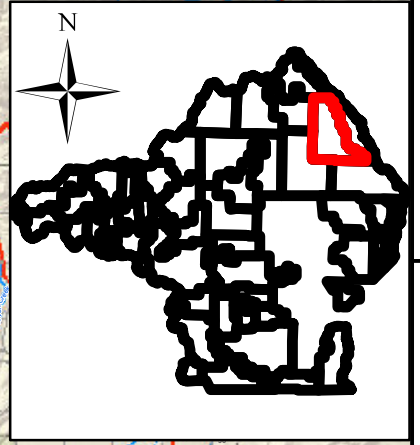


36

106°15'0"W 106°10'0"W 106°5'0"W 106°0'0"W 105°55'0"W 105°50'0"W 105°45'0"W

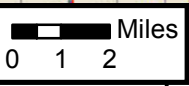
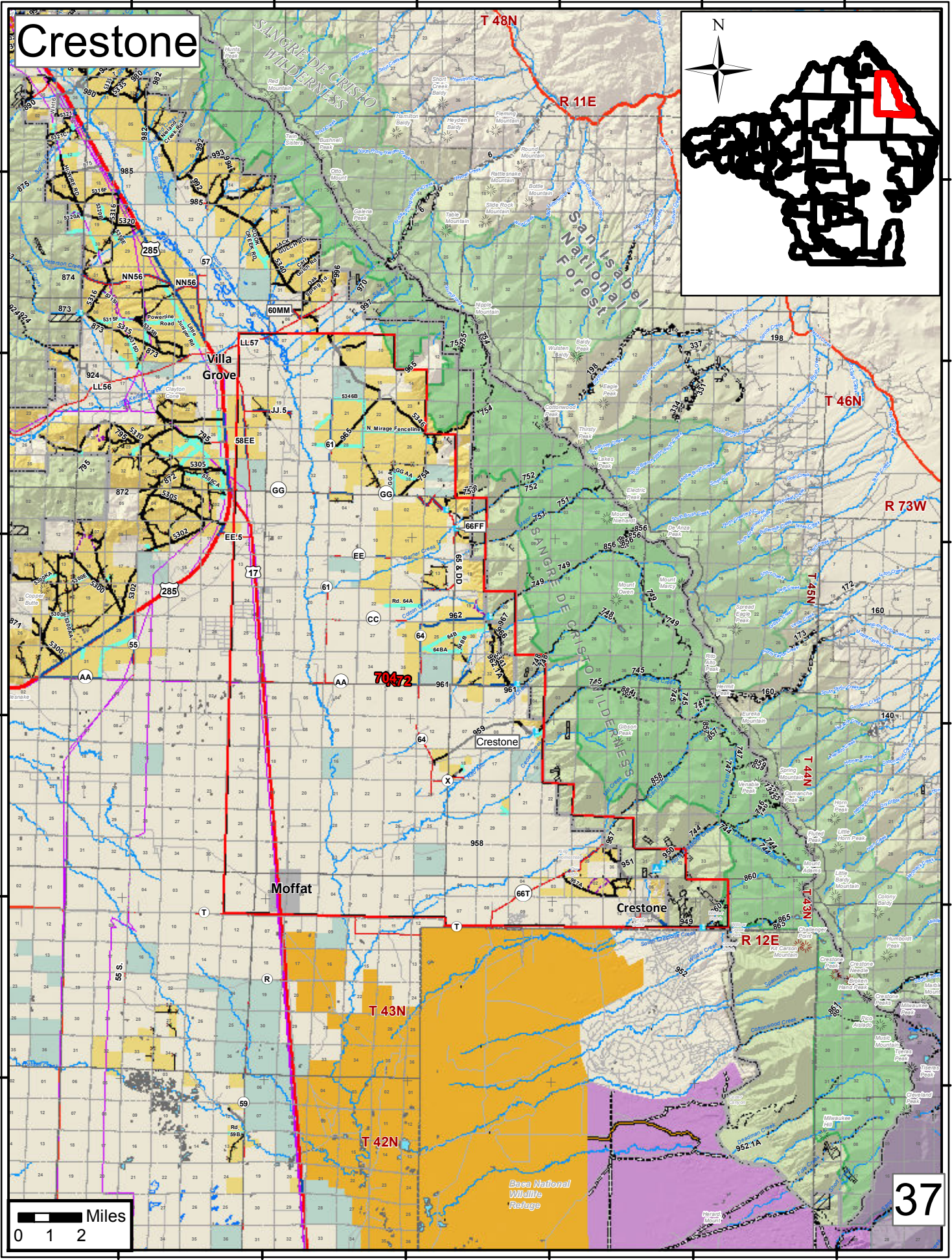
106°0'0"W 105°55'0"W 105°50'0"W 105°45'0"W 105°40'0"W 105°35'0"W

# Crestone



38°20'0"N  
38°15'0"N  
38°10'0"N  
38°5'0"N  
38°0'0"N  
37°55'0"N

38°20'0"N  
38°15'0"N  
38°10'0"N  
38°5'0"N  
38°0'0"N  
37°55'0"N

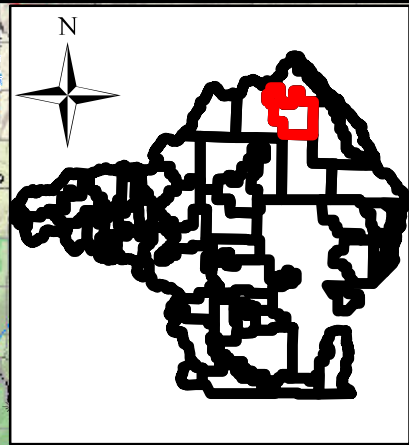


37

106°0'0"W 105°55'0"W 105°50'0"W 105°45'0"W 105°40'0"W 105°35'0"W

106°20'0"W 106°15'0"W 106°10'0"W 106°5'0"W 106°0'0"W 105°55'0"W 105°50'0"W

# Bonanza/Villa Grove



38°25'0"N

38°25'0"N

38°20'0"N

38°20'0"N

38°15'0"N

38°15'0"N

38°10'0"N

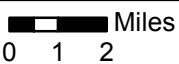
38°10'0"N

38°5'0"N

38°5'0"N

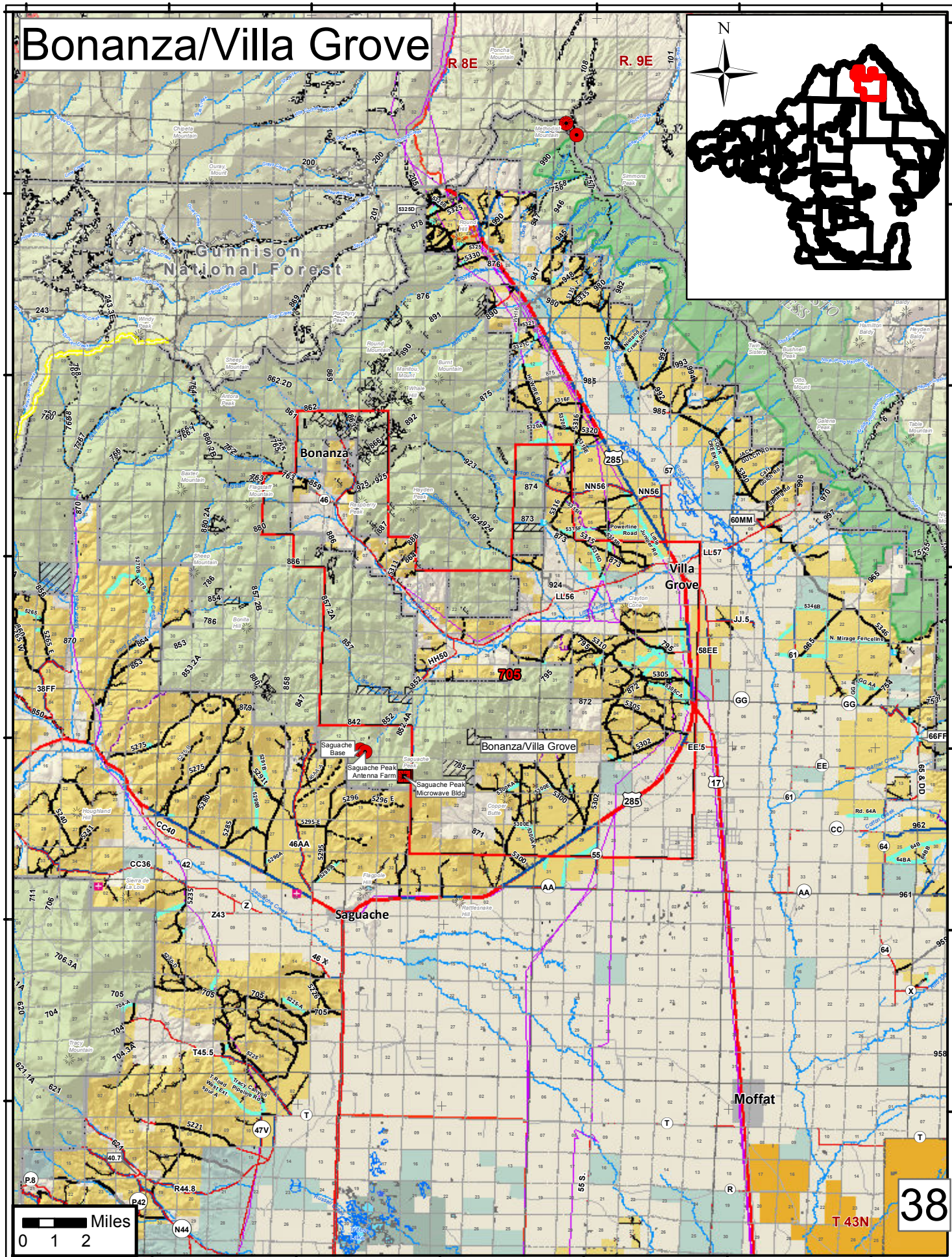
38°0'0"N

38°0'0"N



106°15'0"W 106°10'0"W 106°5'0"W 106°0'0"W 105°55'0"W 105°50'0"W

38



106°10'0"W

106°5'0"W

106°0'0"W

105°55'0"W

105°50'0"W

105°45'0"W

38°15'0"N

38°10'0"N

38°5'0"N

38°0'0"N

37°55'0"N

37°50'0"N

37°45'0"N

38°15'0"N

38°10'0"N

38°5'0"N

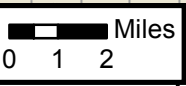
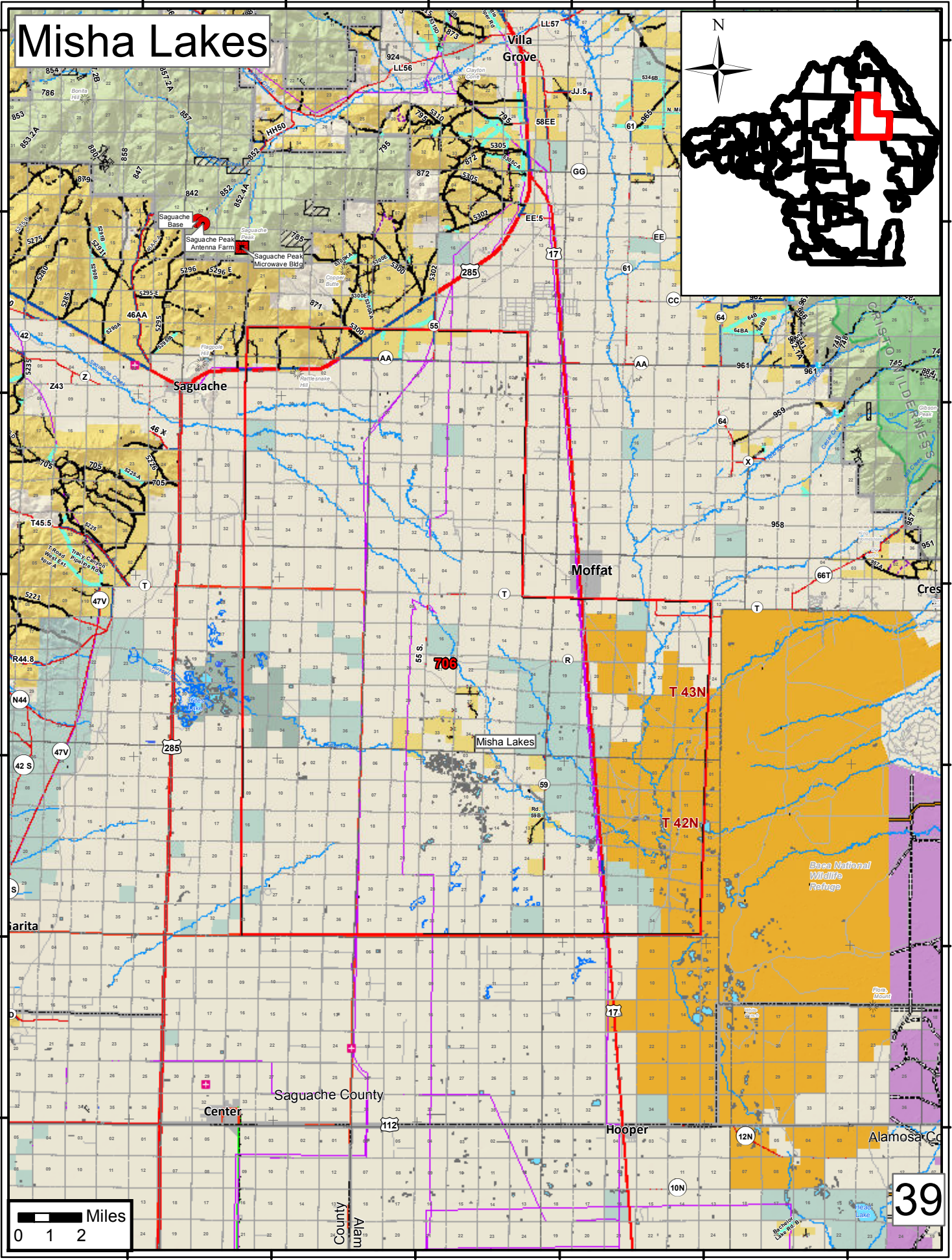
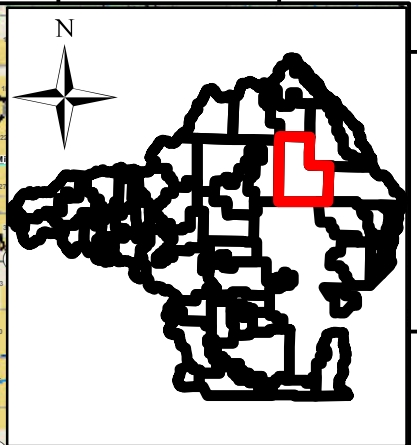
38°0'0"N

37°55'0"N

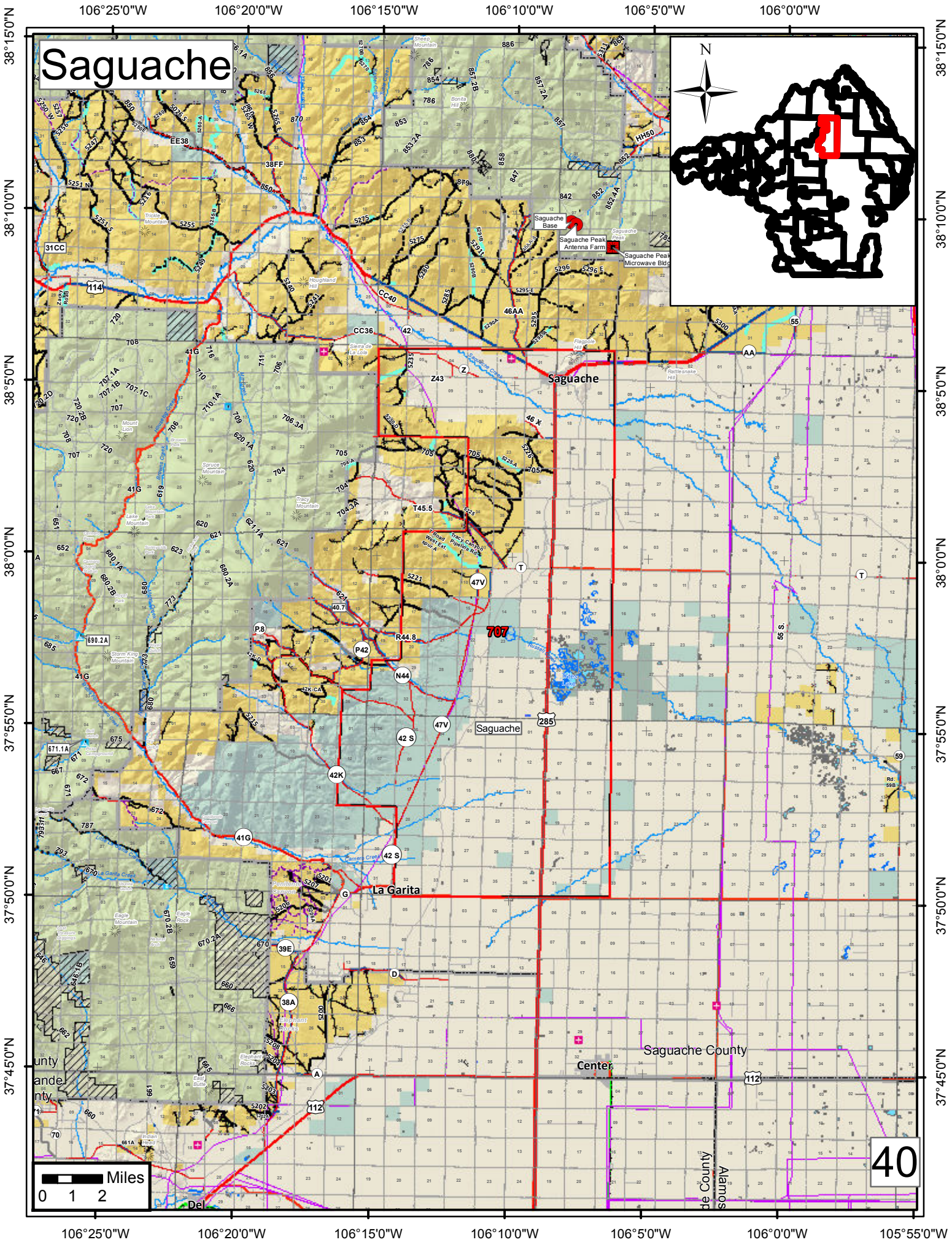
37°50'0"N

37°45'0"N

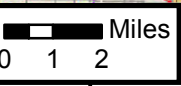
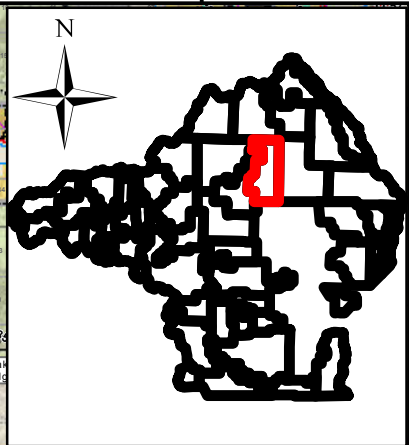
# Misha Lakes



39



# Saguache

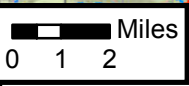
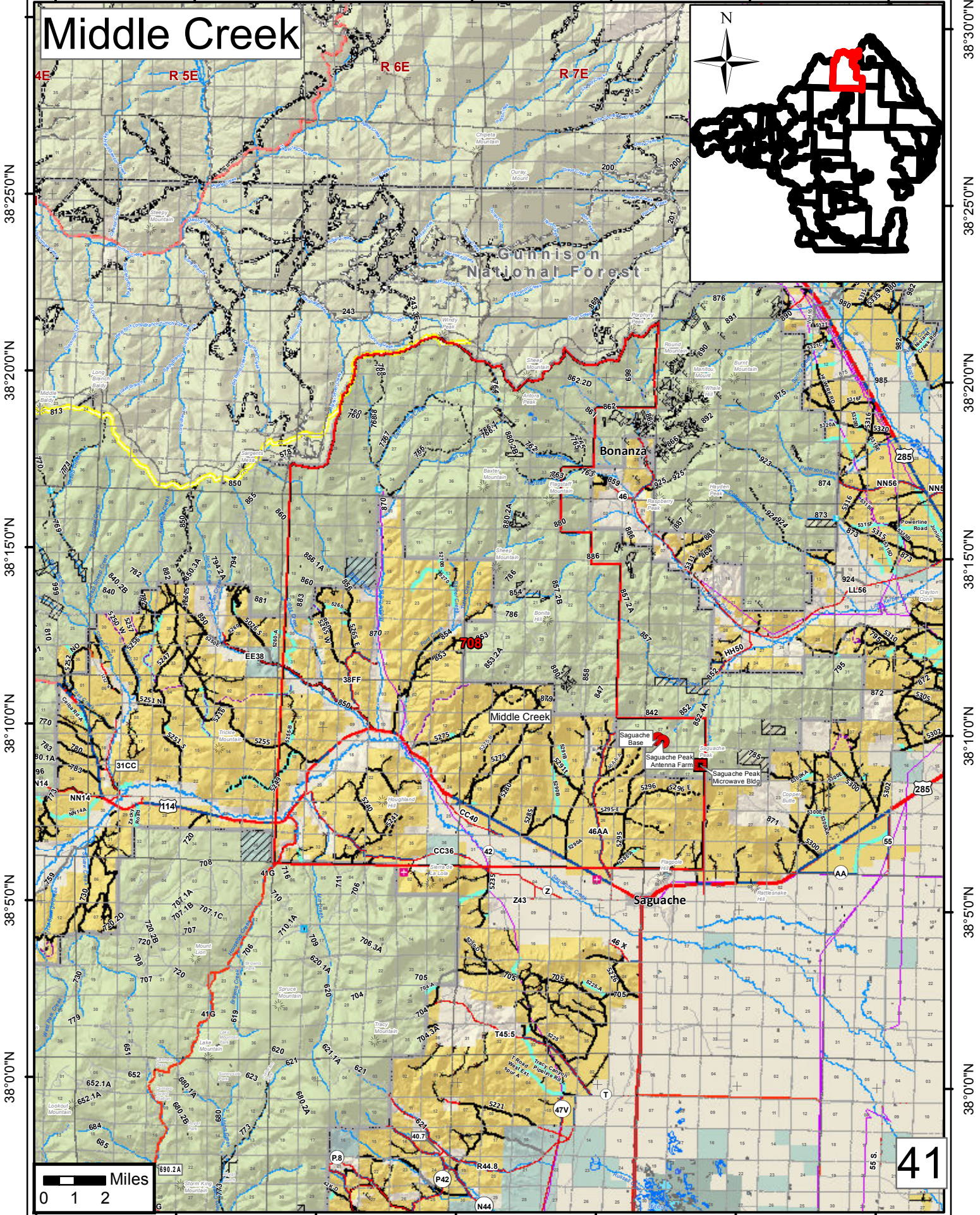


40



106°30'0"W 106°25'0"W 106°20'0"W 106°15'0"W 106°10'0"W 106°5'0"W 106°0'0"W

# Middle Creek

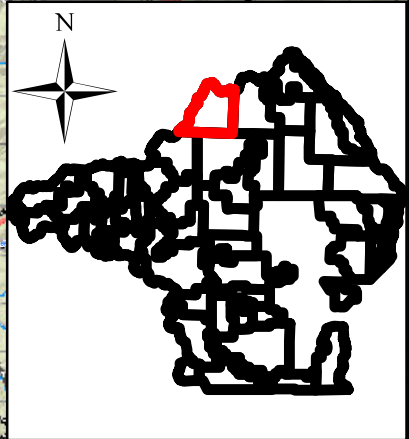


41

106°30'0"W 106°25'0"W 106°20'0"W 106°15'0"W 106°10'0"W 106°5'0"W 106°0'0"W

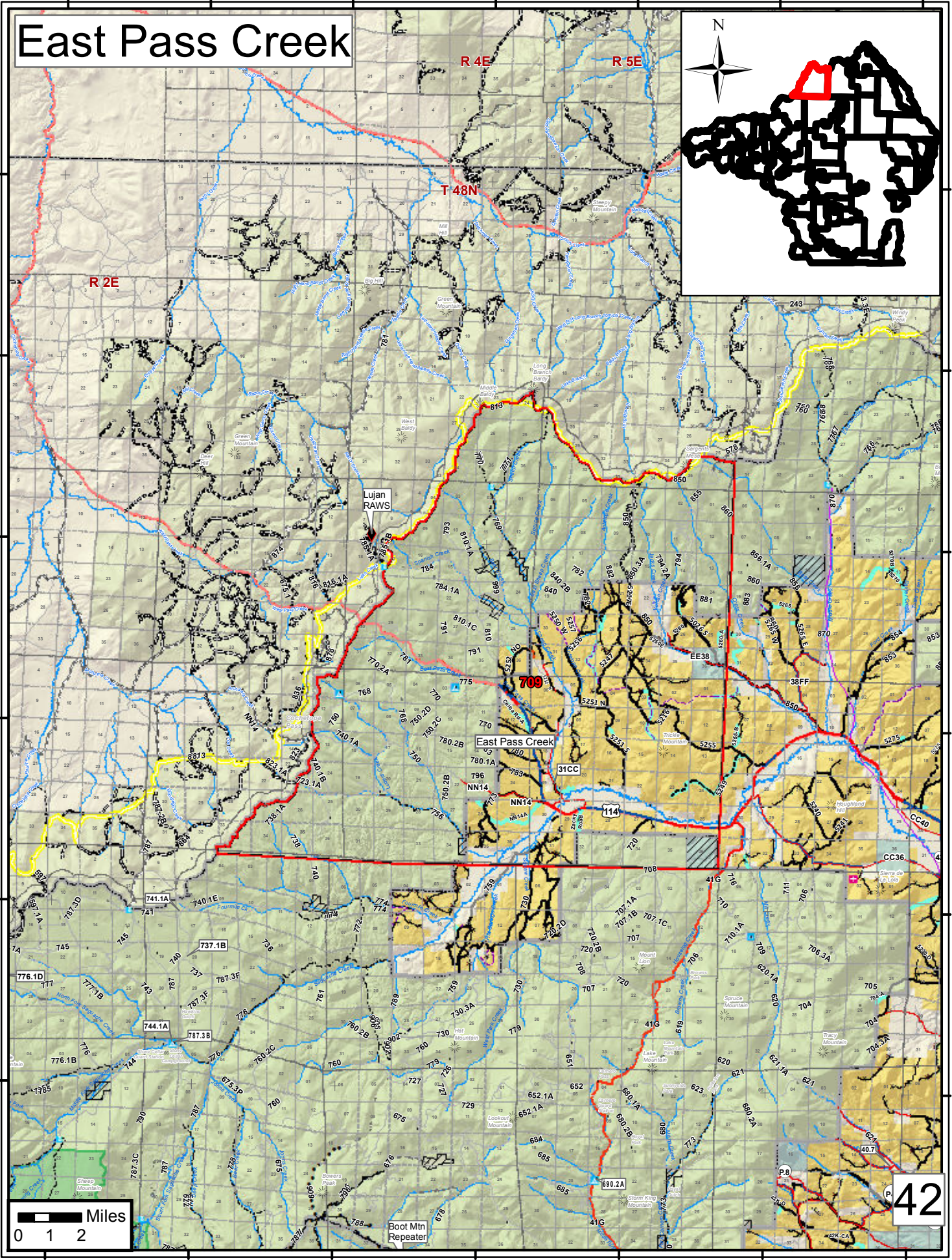
106°45'0"W 106°40'0"W 106°35'0"W 106°30'0"W 106°25'0"W 106°20'0"W 106°15'0"W

# East Pass Creek



38°25'0"N  
38°20'0"N  
38°15'0"N  
38°10'0"N  
38°5'0"N  
38°0'0"N

38°25'0"N  
38°20'0"N  
38°15'0"N  
38°10'0"N  
38°5'0"N  
38°0'0"N



R 2E

R 4E

R 5E

T 48N

Lujan RAWS

East Pass Creek

709

31CC

NN14

NN14

700.1A

700.1B

700.1C

700.2A

700.2B

700.2C

700.2D

700.2E

700.2F

700.2G

700.2H

700.2I

700.2J

700.2K

700.2L

700.2M

700.2N

700.2O

700.2P

700.2Q

700.2R

700.2S

700.2T

700.2U

700.2V

700.2W

700.2X

700.2Y

700.2Z

700.2AA

700.2AB

700.2AC

700.2AD

700.2AE

700.2AF

700.2AG

700.2AH

700.2AI

700.2AJ

700.2AK

700.2AL

700.2AM

700.2AN

700.2AO

700.2AP

700.2AQ

700.2AR

700.2AS

700.2AT

700.2AU

700.2AV

700.2AW

700.2AX

700.2AY

700.2AZ

700.2BA

700.2BB

700.2BC

700.2BD

700.2BE

700.2BF

700.2BG

700.2BH

700.2BI

700.2BJ

700.2BK

700.2BL

700.2BM

700.2BN

700.2BO

700.2BP

700.2BQ

700.2BR

700.2BS

700.2BT

700.2BU

700.2BV

700.2BW

700.2BX

700.2BY

700.2BZ

700.2CA

700.2CB

700.2CC

700.2CD

700.2CE

700.2CF

700.2CG

700.2CH

700.2CI

700.2CJ

700.2CK

700.2CL

700.2CM

700.2CN

700.2CO

700.2CP

700.2CQ

700.2CR

700.2CS

700.2CT

700.2CU

700.2CV

700.2CW

700.2CX

700.2CY

700.2CZ

700.2DA

700.2DB

700.2DC

700.2DD

700.2DE

700.2DF

700.2DG

700.2DH

700.2DI

700.2DJ

700.2DK

700.2DL

700.2DM

700.2DN

700.2DO

700.2DP

700.2DQ

700.2DR

700.2DS

700.2DT

700.2DU

700.2DV

700.2DW

700.2DX

700.2DY

700.2DZ

700.2EA

700.2EB

700.2EC

700.2ED

700.2EE

700.2EF

700.2EG

700.2EH

700.2EI

700.2EJ

700.2EK

700.2EL

700.2EM

700.2EN

700.2EO

700.2EP

700.2EQ

700.2ER

700.2ES

700.2ET

700.2EU

700.2EV

700.2EW

700.2EX

700.2EY

700.2EZ

700.2FA

700.2FB

700.2FC

700.2FD

700.2FE

700.2FF

700.2FG

700.2FH

700.2FI

700.2FJ

700.2FK

700.2FL

700.2FM

700.2FN

700.2FO

700.2FP

700.2FQ

700.2FR

700.2FS

700.2FT

700.2FU

700.2FV

700.2FW

700.2FX

700.2FY

700.2FZ

700.2GA

700.2GB

700.2GC

700.2GD

700.2GE

700.2GF

700.2GG

700.2GH

700.2GI

700.2GJ

700.2GK

700.2GL

700.2GM

700.2GN

700.2GO

700.2GP

700.2GQ

700.2GR

700.2GS

700.2GT

700.2GU

700.2GV

700.2GW

700.2GX

700.2GY

700.2GZ

700.2HA

700.2HB

700.2HC

700.2HD

700.2HE

700.2HF

700.2HG

700.2HH

700.2HI

700.2HJ

700.2HK

700.2HL

700.2HM

700.2HN

700.2HO

700.2HP

700.2HQ

700.2HR

700.2HS

700.2HT

700.2HU

700.2HV

700.2HW

700.2HX

700.2HY

700.2HZ

700.2IA

700.2IB

700.2IC

700.2ID

700.2IE

700.2IF

700.2IG

700.2IH

700.2II

700.2IJ

700.2IK

700.2IL

700.2IM

700.2IN

700.2IO

700.2IP

700.2IQ

700.2IR

700.2IS

700.2IT

700.2IU

700.2IV

700.2IW

700.2IX

700.2IY

700.2IZ

700.2JA

700.2JB

700.2JC

700.2JD

700.2JE

700.2JF

700.2JG

700.2JH

700.2JI

700.2JJ

700.2JK

700.2JL

700.2JM



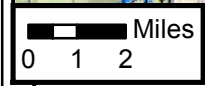
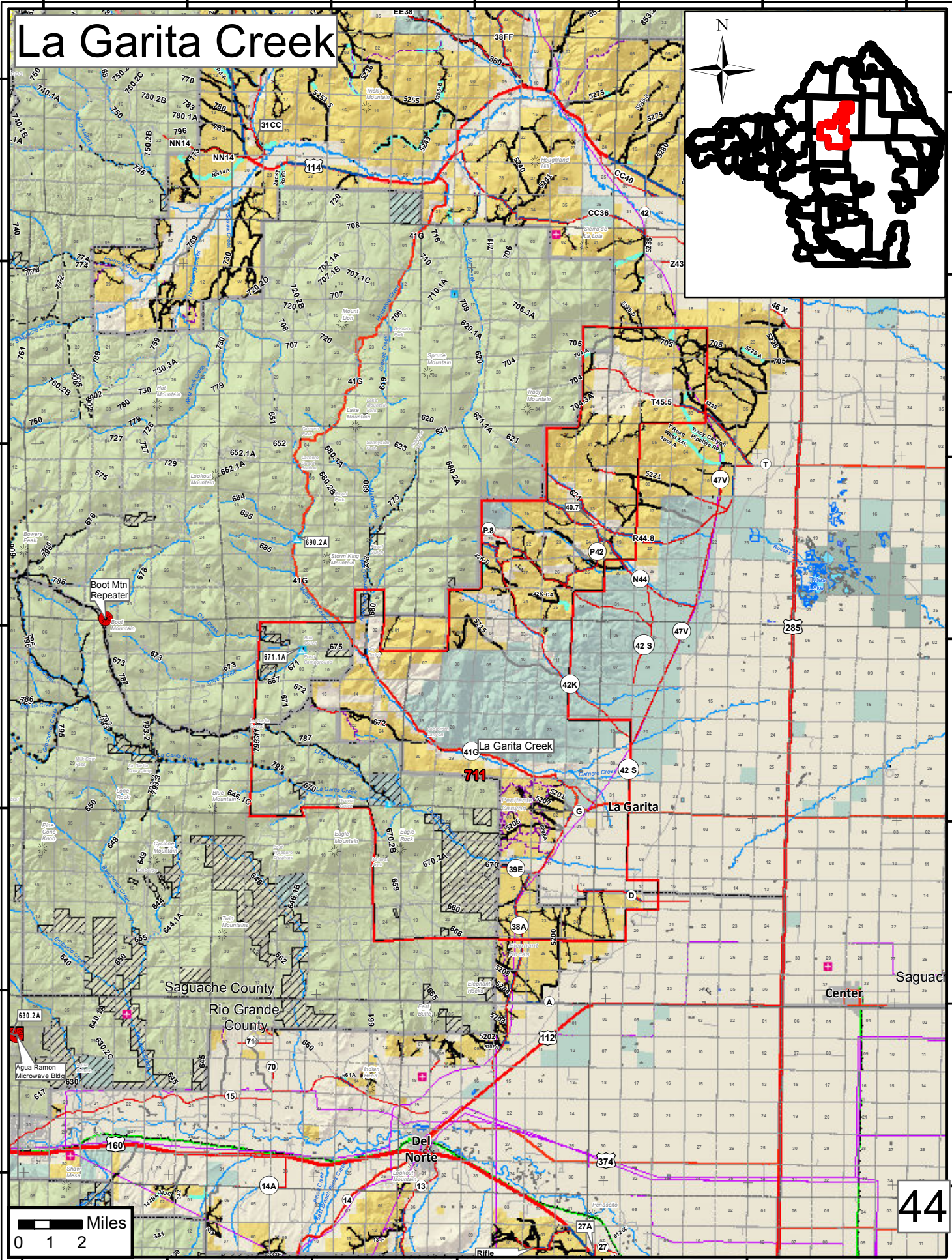
106°35'0"W 106°30'0"W 106°25'0"W 106°20'0"W 106°15'0"W 106°10'0"W 106°5'0"W

# La Garita Creek



38°10'0"N  
38°5'0"N  
38°0'0"N  
37°55'0"N  
37°50'0"N  
37°45'0"N  
37°40'0"N

38°10'0"N  
38°5'0"N  
38°0'0"N  
37°55'0"N  
37°50'0"N  
37°45'0"N  
37°40'0"N



44

106°35'0"W 106°30'0"W 106°25'0"W 106°20'0"W 106°15'0"W 106°10'0"W 106°5'0"W

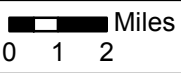
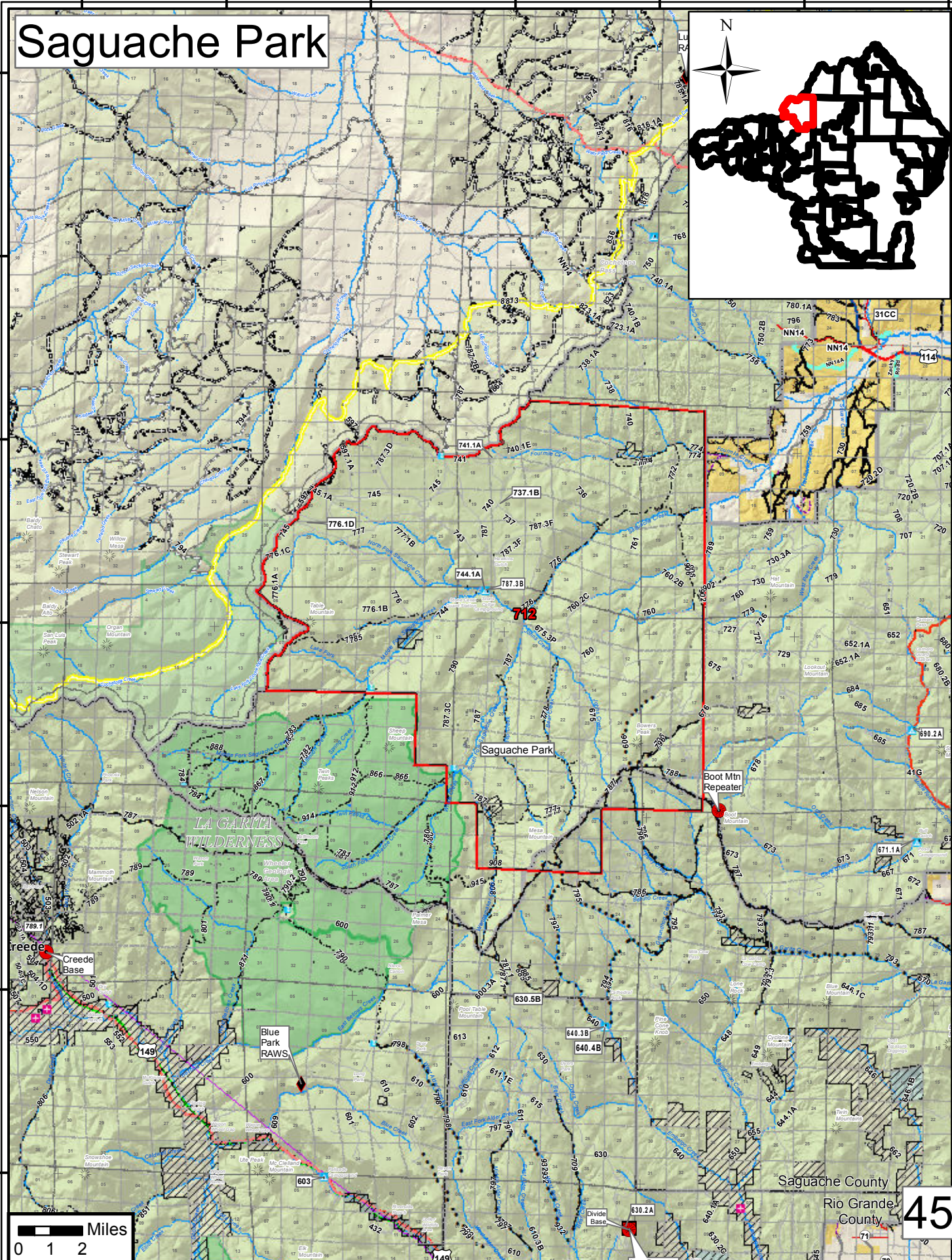
106°55'0"W 106°50'0"W 106°45'0"W 106°40'0"W 106°35'0"W 106°30'0"W 106°25'0"W

# Saguache Park



38°15'0"N  
38°10'0"N  
38°5'0"N  
38°0'0"N  
37°55'0"N  
37°50'0"N  
37°45'0"N

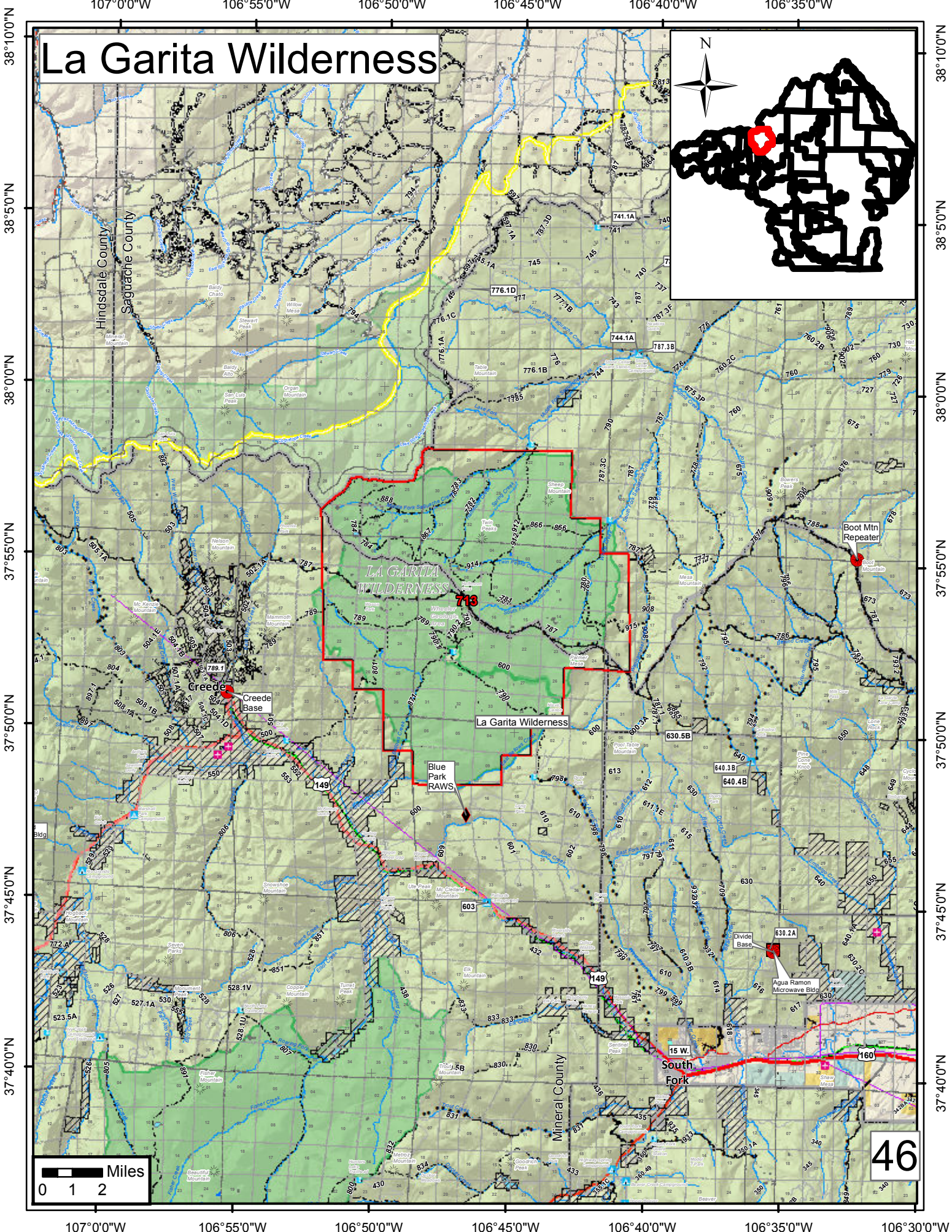
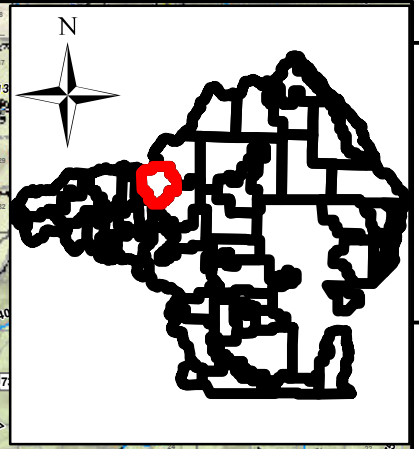
38°15'0"N  
38°10'0"N  
38°5'0"N  
38°0'0"N  
37°55'0"N  
37°50'0"N  
37°45'0"N



45

106°55'0"W 106°50'0"W 106°45'0"W 106°40'0"W 106°35'0"W 106°30'0"W 106°25'0"W

# La Garita Wilderness



46