

2021 HVAC & REFRIGERATION SPECIALS

from Leading Manufacturers including:



F.W. WEBB COMPANY

WEBB Rewards



See what your points can get you.



The choice is YOURS!

Redeem points in the online catalog for gift cards, electronics, sporting goods and *more*.

Earn 2 points for every dollar spent on PurePro® products and 1 point for every dollar spent on all other qualifying products.

Start redeeming once you reach 25,000 points!

Visit fwwebbrewards.com to register and to view full program rules.

Catalog registration is open year round.

Program limited to F.W. Webb Company account holders. Some exclusions apply. Full program terms and conditions available at fwwebbrewards.com.



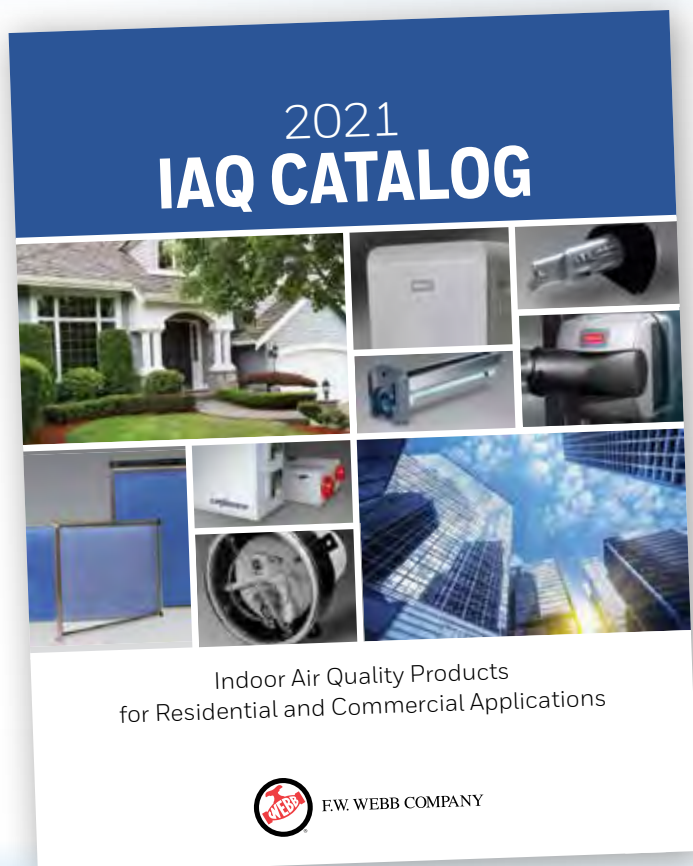
F.W. WEBB COMPANY

TABLE OF CONTENTS

	Page #		Page #
A			
Air and Media Filters.....	14-15	Plastic Diffusers – Airtec.....	7
Air Cleaners Media and Electronic	12	PremierOne Whole Home HEPA Filtration and Accessories.....	14
B			
Belts.....	20	PremierOne Whole Home Polarized Media Air Cleaner	14
Blower Motors	18	Pressure Controls.....	27
Bubble and FSK Wrap.....	7	R	
C			
Capacitors and Contactors.....	16	Recovery Machines, Scales and Vacuum Pumps.....	25
Chemicals, Cleaners and Sealants	22	Refrigerant Flush and Sealants.....	21
Compressor Start Assist Kits.....	20	Refrigerant Leak Detection – Spectrolin	21
Condensate Pumps and Accessories.....	1	Refrigeration Condenser Motors	19
Condenser Fan Motors	17	Refrigeration Evap Motors – Watt and 3.3"	19
Condenser Pads	2	Refrigeration Technology Cleaners and Leak Detectors.....	23
D			
Dealer Marketing Programs.....	13	Refrigeration Temperature Controls.....	26
Defrost Clocks.....	27	Refrigeration Utility Motors.....	19
Dehumidifiers	12	Registers, Grilles and Diffusers	6
Drain Pans and Switches.....	1	S	
Duct Straps	4	Screws.....	20
Ductwork Tools.....	25	SpeedClean	4
E			
Electronic Temperature Controls	26	T	
Evergreen Genteq New ECM Motor Rescue Family of Motors for Blower Application	19	Thermostats – PurePro	11
F			
Filter Driers and Sight Glass.....	16-17	Thermostat Wire	11
Flex Duct.....	5-6	Traditional, Wi-Fi and Redlink Thermostats – Honeywell	10
H			
Humidifiers	12	Transformers and Relays.....	17
L			
Line Set Covers.....	4	U	
M			
Manifolds and Hoses.....	23	Ultraviolet Air Purification.....	15
Mastic and Tape	5	U.S. Motors - ECM Motor Rescue Family of Motors for Blower Application.....	18
Mini Split Accessories	3	W	
Mini Split Stands and Wall Brackets.....	3	Whips, Disconnects, Surge Protectors and Concentric Vent Kits	2
N			
Nitrogen Regulators.....	24	Wi-Fi Thermostats – Ecobee	11
Z			
		Zone Dampers and Panels – EWC	7-8
		Zone Dampers and Panels – Honeywell	9

Did you know we have a catalog specific to IAQ products?

Grab the 2021 edition from your local store.



The residential and commercial products featured in the catalog help maintain proper humidity levels as well as purify and clean the air.

F.W. Webb has an extensive inventory of quality products from these manufacturers:

Honeywell
Home

 **Nu-Calgon**

PREMIERONE™

 **FIELD CONTROLS**

RGF
ENVIRONMENTAL GROUP, INC.


Ultra-Aire™
WHOLE HOUSE VENTILATING DEHUMIDIFIERS

LIFEBREATH
INDOOR AIR SYSTEMS

cps®

The importance of Indoor Air Quality is only going to increase so now is a great time to add these products to your offering.



F.W. WEBB COMPANY

CONDENSATE PUMPS AND ACCESSORIES

WEBB #	MFR #	DESCRIPTION
681739	PROPP-PUMP	COND PMP W/BUILT IN NUETRALIZER (500,000 BTU)
681740	PROPP-PUMPRK	COND NUETRALIZER REFILL KIT FOR ABOVE PUMP
681743	PROPP40	CONDENSATE NUETRALIZER 400 MBH 1.6GPH
681744	PROPP40-KIT	CONDENSATE NUETRALIZER 400 MBH 1.6GPH W/HOSE KIT AND FTGS
475942	PROPP40-RK	COND NUETRALIZER REFILL KIT FOR PP-40 NEUTRALIZER
50096	L/G554425	COND PMP VCMA-20ULS AUTO W/SFTY SWTCH
192650	L/G554200	COND PMP VCC-20ULS LPRFL W/SFTY SWTCH
94517	BCKCB201UL	COND PMP MED W/SFTY SWTCH 115V CB201UL
71904	WAL0819506	TBNG VNYL 3/8IDx1/2OD
781336	DTC7-38P	TBNG GORILLA VNYL CLR 3/8"IDx100' DIVERSITECH BRAND
781363	DTC7-38	TBNG VNYL CLR 3/8"IDx100' DIVERSITECH BRAND
244401	MRC52115	ANTI VIBRATION PAD 2X2X3/4" RUBBER
216777	MRC52110	ANTI VIBRATION PAD 4X4 CORK/RUBBER
244402	MRC52104	ANTI VIBRATION PAD 6X6X3/8" RUBBER
243167	DTC7-60Y	BLOCK GRAY AIR HANDLER
310348	DTCFB-1	FURNACE MOUNTING BLOCK (CORNER)
98586	BRM4008	6" GRAY PUMP UP - 6X6 SQUARE BASE
77292	BRM34TRAP	PTRAP 3/4" S40
103219	BRM0348	3/4" CLEAN OUT TEE
901115	DTCSG-1	DRAIN GUN
901114	DTCSGC-12	CART SWOOSH CO2 FOR NEW GUN #SGC-1
246249	DTCGGC-12	CART SWOOSH CO2 FOR GG-1 DRAIN GUN (OLD GUN)
341678	REC83114	EZT-113B CLEAR ECONOMY TRAP KIT WITH BRUSH
341680	REC83210	EZT-210 STANDARD SMART TRAP KIT 3/4" WITH INTEGRAL SWITCH

PurePro



Little GIANT



Beckett
CORPORATION



DIVERSiTECH



DRAIN PANS AND SWITCHES

WEBB #	MFR #	DESCRIPTION
372233	GLT96208	DRAIN PAN GOLIATH SECONDARY W/O SNR 30x62"
372232	GLT96206	DRAIN PAN GOLIATH SECONDARY W/O SNR 30x50"
427935	GLT96143	WTR SNSR KIT AG-4200E ELEC OVRFLW 24V/5A
99958	DTC6-3050L	DRAIN PAN SECONDARY COND 30x50" PLASTIC
101195	DTC6-3060L	DRAIN PAN SECONDARY COND 30x60" PLASTIC
103040	DTCCC-1	SAFETY SWITCH CONDENSATE OVRFLW
222688	DTCWS1	WET SWITCH FLOOD DETECTOR
205739	L/G599123	SFTY SWTCH COND OVRFLW W/72" LEAD WIRE
511788	GLT96106	MGNTC SWTCH AG-1200+ F/DRN PAN MTL/PLS



DIVERSiTECH



2021 HVAC PRE-SEASON SPECIALS

WHIPS, DISCONNECTS, SURGE PROTECTORS AND CONCENTRIC VENT KITS

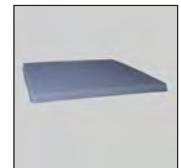
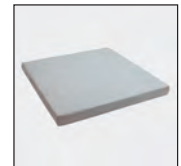
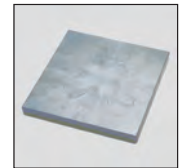
WEBB #	MFR #	DESCRIPTION
90986	MRC84135	WHIP NMTLC 10/3 THHN 1/2"x6'
94347	MRC84131	WHIP NMTLC 10/3 THHN 1/2"x4'
90987	MRC84137	WHIP 3/4"x6' NMTLC 8GA
90971	MRC83315	NON-FUSBL DSCONN 60A SGL PH
94344	MRC83396	FUSED DISCONNECT 30 AMP
94345	MRC83317	FUSED DISCONNECT 60 AMP
598914	MRC83905	HVAC SURGE PROT 120/240V
483614	GRSAG3000	SURGE PROT SGL SPLT PH 120/240V 4X
336299	SORS1-1CT0302	VNT KIT CONC TERMINATION 2"
336300	SORS1-1CT0303	VNT KIT CONC TERMINATION 3"



CONDENSER PADS

WEBB #	MFR #	DESCRIPTION
526564	DTCUC1636-2	EQUIPMENT PAD DIVERSITECH ELITE 16X36X2"
477152	DTCUC1838-3	EQUIPMENT PAD DIVERSITECH ELITE 18X38X3"
477153	DTCEL2424-2	EQUIPMENT PAD DIVERSITECH ELITE 24x24x2"
477155	DTCEL3232-2	EQUIPMENT PAD DIVERSITECH ELITE 32X32X2"
477157	DTCEL3636-2	EQUIPMENT PAD DIVERSITECH ELITE 36X36X2"
477158	DTCEL3648-2	EQUIPMENT PAD DIVERSITECH ELITE 36X48X2"
549396	DTCUC2424-3	CONDENSER PAD ULTRALITE 24"X24"X3"
340323	DTCUC3030-3	CONDENSER PAD ULTRALITE 30"X30"X3"
552543	DTCUC3232-3	CONDENSER PAD ULTRALITE 36"X36"X3"
340200	DTCUC3636-3	CONDENSER PAD ULTRALITE 36"X36"X3"
649040	DTCX2424311	EQUIPMENT PAD DIVERSITECH HEF-T-PAD 24X24X3
649041	DTCX3030311	EQUIPMENT PAD DIVERSITECH HEF-T-PAD 30X30X3
649042	DTCX3636311	EQUIPMENT PAD DIVERSITECH HEF-T-PAD 36X36X3
581260	DTCX3848311	EQUIPMENT PAD DIVERSITECH HEF-T-PAD 36X48X3
441707	DTCHP3636-8	HEAT PUMP 8" RISER EQUIPMENT PAD 36X36X8

MORE PADS ALSO AVAILABLE - PLEASE INQUIRE FOR PRICING.



MINI SPLIT STANDS AND WALL BRACKETS

WEBB #	MFR #	DESCRIPTION
475643	QSLQSM1200	MINI SPLT STAND THIN 12" HIGH 9-12MBTU
475644	QSLQSMS1201	MINI SPLT STAND WIDE 12" HIGH
475647	QSLQSM1800	MIN SPLIT STAND THIN 18" HIGH 9-12MBTU
475648	QSLQSMS1801	MINI SPLT STAND WIDE 18" HIGH
475649	QSLWSM1802	MINI SPLT STND DUAL FAN 18" HIGH
698762	QSLWSM1805	MINI SPLT STAND EXTRA WIDE 18" HIGH
698763	QSLWSM2405	MINI SPLT STAND EXTRA WIDE 24" HIGH
475653	QSLQSWB1000	MINI SPLIT WALL BRACKET 26" MTG ARMS 500LB CAPACITY NO TOP RAIL
504807	QSLQSWB2000	MINI SPLIT WALL BRACKET 34" RAIL / 25" ARM 350LB CAPACITY
738089	QSLQWSB2004	MINI SPLIT WALL BRACKET 40" RAIL / 25" ARM 350LB CAPACITY
527101	QSLQSWB3000	MINI SPLIT WALL BRACKET 34" RAIL / 18" ARM 300LB W/ FOUNDATION BRK
536960	QSLQSWB4000	MINI SPLIT WALL BRACKET 34" RAIL / 25" ARM 500LB CAPACITY
462987	QSLQSLG1000	HORIZONTAL UNIT HANGER 300LB CAPACITY
489268	QSLQSTD3000	HEAT PUMP STAND ADJ 18" 14GA STL - FOR UNITARY HP
427900	APC87733	MINI SPLIT WALL BRACKET 31" RAIL / 22 ARM 300 LB CAPACITY
437549	APC87734	MINI SPLIT WALL BRACKET 31" RAIL / 22 ARM 300 LB STAINLESS STEEL
593323	DTC230-B2L	MINI SPLIT WALL BRACKET 38" RAIL / 21" ARM 350LB CAPACITY

QUICK-SLING



DIVERSITECH

RECTORSEAL



DIVERSITECH

MINI SPLIT ACCESSORIES

WEBB #	MFR #	DESCRIPTION
629342	HONDC6000WF1001	DC6000WF1001 D6 PRO WI-FI DUCTLESS CONTROLLER
369348	ELE14.4STRMSR-100	WIRE STRND 14/4 100' ROLL MINI SPLIT WIRE
429729	ELE144STRMSR-500	WIRE STRND 14/4 500' SPOOL MINI SPLIT WIRE
411971	ELE18.2STRSTAT-500	TSAT WIRE 18/2 500' SPOOL STRADED CONTROL WIRE
541746	ELE58225705	TRAY CABLE 14/4 50' 600V MINI SPLT
671221	ELE58225703	TRAY CABLE 14/4 250' 600V MINI SPLT
672332	DTC750-MLTC50	TRAY CABLE LIQUID TITE CONNECTOR
908754	ELE16.2STRSHLDP-50	COMMUNICATION WIRE 16/2 STRANDED/SHIELDED
963066	ELE16.2STRSHLDP-100	COMMUNICATION WIRE 16/2 STRANDED/SHIELDED
963051	ELE16.2STRSHLDP-250	COMMUNICATION WIRE 16/2 STRANDED/SHIELDED
908931	ELE16.2STRSHLDP-500	COMMUNICATION WIRE 16/2 STRANDED/SHIELDED
908918	ELE16.2STRSHLDP-1000	COMMUNICATION WIRE 16/2 STRANDED/SHIELDED
648868	L/G553507	COND PMP MINI SPLIT DUAL VOLTAGE EC-1 110/240V
483220	APC83939	COND PUMP MINI WHITE SURFACE MOUNT 100-250V
430388	APC83809	ASPEN MINI AQUA 100-230V CONDENSATE PUMP
508945	DAICACA-CP3-1	COND PUMP FOR DUCTLESS (DAIKIN)
520405	APC97705	MIGHTY BRACKET MS INSTALL SUPPORT TOOL

Honeywell Home



RECTORSEAL



2021 HVAC PRE-SEASON SPECIALS

SPEEDCLEAN



WEBB #	MFR #	DESCRIPTION
514224	SCNMSB-KIT	COIL CLNR KIT MN SPLT BIB KIT 36x16" A/C
530335	SCNCJ-125	COIL CLN SYS JET 125PSI SPD BATT
548850	SCNSC-CS-100	COILSHOT CONDENSER CLEANER TOOL
548851	SCNSC-CS-TABS	COILSHOT TABLETS BX OF 8 SPEEDCLEAN

DUCT STRAPS



WEBB #	MFR #	DESCRIPTION
110550	PROCT-B36H9L	DUCT STRAP 36" NAT UP TO 10" DUCT (50 PACK)
94530	PROCT-B48H9L	DUCT STRAP 48" NAT UP TO 14" DUCT (50 PACK)
118829	PROCT-B14S9C	CBL TIE 14" NAT (100 PACK)
118830	PROCT-B14S0C	CBL TIE 14" BLACK (100 PACK)
118833	PROCT-B11S9C	CBL TIE STD 11" NAT 50LB (100 PACK)
94528	PROCT-B11S0C	CBL TIE STD 11" BLACK 50LB (100 PACK)
68300	PROCT-B7S6M	CBL TIE STD 8" BLUE (1000 PACK)



LINE SET COVERS



WEBB #	MFR #	DESCRIPTION
420777	APC84004	DUCT 3-1/2"x8FT WHT LD92W
420775	APC84016	WALL INL 3-1/2" WHT LW92W
420774	APC84014	SFFT INL 3-1/2" WHT LP92W
420776	APC84010	CPLG 3-1/2" WHT LJ92W
420772	APC84011	ELL 90DEG FLAT 3-1/2" WHT LK92W
420773	APC84007	END FTG 3-1/2" WHT LEN92W
423826	APC84104	DUCT 4-1/2"x8FT WHT LD122W
423851	APC84116	WALL INL 4-1/2" WHT LW122W
423858	APC84114	SFFT INL 4-1/2" WHT LP122W
423844	APC84110	CPLG 4-1/2" WHT LJ122W
423957	APC84107	END FTG 4-1/2" WHT LEN122W



MASTIC AND TAPE

WEBB #	MFR #	DESCRIPTION
489823	DMTPROSEAL1	DUCT SEALR PROSEAL 1GAL - WTR BASED
489824	DMTPROSEALT	DUCT SEALR PROSEAL 11OZ
603068	DMTEZSEAL1	DUCT SEALR EZ-SEAL 1GAL - WTR BASED W/FIBER REINFORCED
603069	DMTEZSEALT	DUCT SEALR EZ-SEAL 11OZ
489808	DMTEVERSEAL1	DUCT SEALR EVERSEAL 1GAL - WTR BASED SMOOTH FINISH
489809	DMTEVERSEALT	DUCT SEALR EVERSEAL H/V 11OZ TUBE
164913	3/M70-0089-1578-0	FOIL TAPE 3"x50YD ALUM -40 to 250 3520CW (MOST POPULAR FOIL TAPE)
90000	3/M70-0089-0992-4	FOIL TAPE 3"x60YD ALUM -40 to 300F UL181 1581A (COLD WEATHER)
578583	3/M70-0089-0500-5	FOIL TAPE 3"X50YD ALUM 1520CW
306220	3/M70-0089-1562-4	FOIL TAPE HIGH TEMP 3"X50YD VENTURE 3423
101328	3/M70-0089-0615-1	FSK TAPE 3"X50YD SILVER 1525CW
75889	3/M70-0089-0697-9	FSK TAPE 3"X50YD WHITE 1540CW
30198	3/M70-0089-0004-8	DUCT TAPE 2"x60YD SILVER
105929	3/M70-0089-0003-0	DUCT TAPE 2"x60YD BLACK
423508	HCS325804	FOIL GRIP TAPE 3" X 100' 1404-181-BFX (MASTIC TAPE UL LISTED)
423509	HCS325803	FOIL GRIP TAPE 2" X 100' 1404-181-BFX (MASTIC TAPE UL LISTED)
180289	HCS304094	FOIL GRIP TAPE 3" X 100' 1402 (MASTIC TAPE)
101096	VKCK501	INSUL TAPE 2"x30' FOAM BY VIRGINIA
93739	VKCPT1	INSUL TAPE 2"x30' CORK BY VIRGINIA
528497	CAL4219-12	INSUL TAPE 2"x30' FOAM NU-CALGON
528496	CAL4217-12	INSUL TAPE 2"x30' CORK NU - CALGON



FLEX DUCT

WEBB #	MFR #	DESCRIPTION
540921	H/CF218-4X25	FLEX DUCT R8.0 INSUL POLY 4"x25' SVR
540922	H/CF218-5X25	FLEX DUCT R8.0 INSUL POLY 5"x25' SVR
540923	H/CF218-6X25	FLEX DUCT R8.0 INSUL POLY 6"x25' SVR
540924	H/CF218-7X25	FLEX DUCT R8.0 INSUL POLY 7"x25' SVR
540925	H/CF218-8X25	FLEX DUCT R8.0 INSUL POLY 8"x25' SVR
540926	H/CF218-9X25	FLEX DUCT R8.0 INSUL POLY 9"x25' SVR
540916	H/CF218-10X25	FLEX DUCT R8.0 INSUL POLY 10"x25' SVR
540917	H/CF218-12X25	FLEX DUCT R8.0 INSUL POLY 12"x25' SVR
540918	H/CF218-14X25	FLEX DUCT R8.0 INSUL POLY 14"x25' SVR
540919	H/CF218-16X25	FLEX DUCT R8.0 INSUL POLY 16"x25' SVR
540920	H/CF218-18X25	FLEX DUCT R8.0 INSUL POLY 18"x25' SVR
540910	H/CF216-4X25	FLEX DUCT R6.0 INSUL POLY 4"x25' SVR
540911	H/CF216-5X25	FLEX DUCT R6.0 INSUL POLY 5"x25' SVR
540912	H/CF216-6X25	FLEX DUCT R6.0 INSUL POLY 6"x25' SVR
540913	H/CF216-7X25	FLEX DUCT R6.0 INSUL POLY 7"x25' SVR
540914	H/CF216-8X25	FLEX DUCT R6.0 INSUL POLY 8"x25' SVR



ATCO AVAILABLE AT SOME LOCATIONS AT SAME PRICING.



2021 HVAC PRE-SEASON SPECIALS

FLEX DUCT (CONT.)

WEBB #	MFR #	DESCRIPTION
540915	H/CF216-9X25	FLEX DUCT R6.0 INSUL POLY 9"x25' SVR
540904	H/CF216-10X25	FLEX DUCT R6.0 INSUL POLY 10"x25' SVR
540905	H/CF216-12X25	FLEX DUCT R6.0 INSUL POLY 12"x25' SVR
540906	H/CF216-14X25	FLEX DUCT R6.0 INSUL POLY 14"x25' SVR
540907	H/CF216-16X25	FLEX DUCT R6.0 INSUL POLY 16"x25' SVR
540908	H/CF216-18X25	FLEX DUCT R6.0 INSUL POLY 18"x25' SVR

ATCO AVAILABLE AT SOME LOCATIONS AT SAME PRICING.

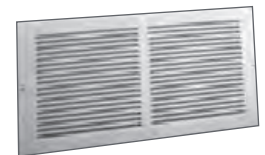
HART
COOLEY.



REGISTERS, GRILLES AND DIFFUSERS

WEBB #	MFR #	DESCRIPTION
93887	H/C421-4X10	FLR DIF MULTI ANG GLDN SND 4x10"
93888	H/C421-4X12	FLR DIF MULTI ANG GLDN SND 4x12"
93890	H/C421-6X10	FLR DIF MULTI ANG GLDN SND 6x10"
93891	H/C421-6X12	FLR DIF MULTI ANG GLDN SND 6x12"
93937	H/CA503MS-6X6	CEIL DIF 3W SQ MULTI SHTER BRT WHT 6x6"
93938	H/CA503MS-8X8	CEIL DIF 3W SQ MULTI SHTER BRT WHT 8x8"
93941	H/CA504MS-6X6	CEIL DIF 4W SQ MULTI SHTER BRT WHT 6x6"
93942	H/CA504MS-8X8	CEIL DIF 4W SQ MULTI SHTER BRT WHT 8x8"
93921	H/C661-10X4	RGSTR CEIL/SDWLL 2W WHT 10x4" STL
93922	H/C661-10X6	RGSTR CEIL/SDWLL 2W WHT 10x6" STL
93924	H/C661-12X4	RGSTR CEIL/SDWLL 2W WHT 12x4" STL
93925	H/C661-12X6	RGSTR CEIL/SDWLL 2W WHT 12x6" STL
93927	H/C661-14X6	RGSTR CEIL/SDWLL 2W WHT 14x6" STL
111691	H/C821-10X4	RGSTR SPLY WHT 10x4" STL
111694	H/C821-10X6	RGSTR SPLY WHT 10x6" STL
111692	H/C821-12X4	RGSTR SPLY WHT 12x4" STL
111695	H/C821-12X6	RGSTR SPLY WHT 12x6" STL
111697	H/C821-8X8	RGSTR SPLY WHT 8x8" STL
93928	H/C673-12X12	RET AIR GRLE 673 FLTR WHT 12X12"
94880	H/C673-14X14	RET AIR GRLE 673 FLTR WHT 14X14"
94881	H/C673-14X20	RET AIR GRLE 673 FLTR WHT 14x20"
93929	H/C673-20X14	RET AIR GRLE 673 FLTR WHT 20X14"
93931	H/C673-20X20	RET AIR GRLE 673 FLTR WHT 20X20"
93932	H/C673-24X24	RET AIR GRLE 673 FLTR WHT 24X24"
165775	H/C673-14X30	RET AIR GRLE 673 FLTR WHT 14x30"
94887	H/C673-30X14	RET AIR GRLE 673 FLTR WHT 30x14"
163536	H/CFPD06	CEIL DIF 4W 2CNE TBAR FIX PTRN BRT WHT 6" STL
163537	H/CFPD08	CEIL DIF 4W 2CNE TBAR FIX PTRN BRT WHT 8" STL
163538	H/CFPD10	CEIL DIF 4W 2CNE TBAR FIX PTRN BRT WHT 10"
163539	H/CFPD12	CEIL DIF 4W 2CNE TBAR FIX PTRN BRT WHT 12"
550698	H/C659TI-20X20	TBAR RETURN AIR FILTER GRILLE INS BACK 20X20 R6
163541	H/CRE5T-22X22W	TBAR RETURN AIR GRILLE REST T-BAR EGGCRATE WHT
94900	H/CHVS	HVS HIGH VOLUME SUPPLY DIFFUSER, 4-WAY,INSULATED BACK

HART
COOLEY.



PLASTIC DIFFUSERS – AIRTEC

WEBB #	MFR #	DESCRIPTION
94856	APC81913	CEIL DIF MV 3W SQ 6"/7"/8" COL WHT 8x8"
94857	APC81914	CEIL DIF MV 4W SQ 6"/7"/8" COL WHT 8x8"
309713	APC81903	GRLE ASSY M 3W 6x6" W4-5-6" COL MV3S
309712	APC81904	GRLE ASSY M 4W 6x6" W4-5-6" COL MV4S
368011	APC81966	MH Multi-Stage Standard TuffBox Register Box (6" x 6")
368013	APC81968	MH Multi-Stage Standard TuffBox Register Box (8" x 8")
368012	APC81970	MH Multi-Stage Standard TuffBox Register Box (10" x 10")

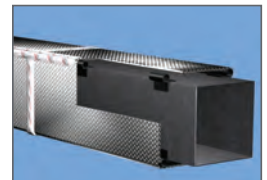
RECTORSEAL



BUBBLE AND FSK WRAP

WEBB #	MFR #	DESCRIPTION
253365	GICAFDW-48	DUCT WRAP ASTRO-FOIL 48"x125' (4')
370053	GICAFDW-60	DUCT WRAP ASTRO-FOIL 60"x125' (5')
486692	GICAFDB-48	DUCT WRAP ASTRO BUBL R8 AIR SPC 48"X50' (4')
283899	REFHVBP60050	RFLCTV INS 60"x50' DBL BUBL R6
319328	REFHVBP60100	RFLCTV INS 60"x100' DBL BUBL R6
283897	INSFSK3X48X50	FSK INSUL BLKT 48"x3"x50'L FSK-FOIL FG 3/4'LB (4')
433126	INSFSK3X60X75	FSK INSUL BLKT 60"x3"x75'L 3W 75'L FSK-FOIL FG (5')
412899	INSFSK2316X48X75	FSK INSUL BLKT 48"x2-3/16"x75'L FSK-FOIL FG (4')
98557	INSFSK2X48X75	FSK INSUL BLKT 48"x2"x75'L FSK-FOIL FG (4')
95501	INSFSK112X48X100	FSK INSUL BLKT 48"x1-1/2"x100'L FSK-FOIL FG (4')

Reflectix



ZONE DAMPERS AND PANELS – EWC

WEBB #	MFR #	DESCRIPTION
99691	EWCNCM300	CTRL PNL NON-EXP 3ZONE F/HP/FCD AIR SYS
100277	EWCBMPLUS3000	CTRL PNL EXP 3ZONE F/HP/CNVNL FCD AIR SYS
105370	EWC24X8SMND	ZONE DMPR ULTR-ZONE AUTO OPP BLD 24x8
100121	EWC20X8SMND	ZONE DMPR ULTR-ZONE AUTO OPP BLD 20x8
97827	EWC18X8SMND	ZONE DMPR ULTR-ZONE AUTO OPP BLD 18x8
108012	EWC16X8SMND	ZONE DMPR ULTR-ZONE AUTO OPP BLD 16x8
105501	EWC14X8SMND	ZONE DMPR ULTR-ZONE AUTO OPP BLD 14x8
102809	EWC12X8SMND	ZONE DMPR ULTR-ZONE AUTO OPP BLD 12x8
100239	EWC10X8SMND	ZONE DMPR ULTR-ZONE AUTO OPP BLD 10x8
105077	EWC8X8SMND	DMPR MTRZ OPP BLD 8x8" SD MNT
100063	EWC8X24BMND	DMPR MTRZ OPP BLD 8x24" BTM MNT
100035	EWC8X20BMND	ZONE DMPR ULTR-ZONE AUTO OPP BLD 8x20
100019	EWC8X18BMND	ZONE DMPR ULTR-ZONE AUTO OPP BLD 8x18
99999	EWC8X16BMND	ZONE DMPR ULTR-ZONE AUTO OPP BLD 8x16
99979	EWC8X14BMND	ZONE DMPR ULTR-ZONE AUTO OPP BLD 8x14
99966	EWC8X12BMND	ZONE DMPR ULTR-ZONE AUTO OPP BLD 8x12
99943	EWC8X10BMND	ZONE DMPR ULTR-ZONE AUTO OPP BLD 8x10
273996	EWC16URD	ZONE DMPR ULTA-ZONE 1BLD 16" RND
273997	EWC14URD	ZONE DMPR ULTA-ZONE 1BLD 14" RND
273998	EWC12URD	ZONE DMPR ULTA-ZONE 1BLD 12" RND

EWC
CONTROLS, INC.



2021 HVAC PRE-SEASON SPECIALS

ZONE DAMPERS AND PANELS – EWC (CONT.)



WEBB #	MFR #	DESCRIPTION
273999	EWC10URD	ZONE DMPR ULTA-ZONE 1BLD 10" RND
274000	EWC9URD	ZONE DMPR ULTA-ZONE 1BLD 9" RND
274001	EWC7URD	ZONE DMPR ULTA-ZONE 1BLD 7" RND
274002	EWC8URD	ZONE DMPR ULTA-ZONE 1BLD 8" RND
603078	EWCLBD-8	BYPASS DAMPER CONSTANT LOAD 8"
603074	EWCLBD-10	BYPASS DAMPER CONSTANT LOAD 10"
603075	EWCLBD-12	BYPASS DAMPER CONSTANT LOAD 12"



F.W. Webb is a **Full-Line YORK Distributor** serving all your Residential and Commercial needs.

A complete rooftop offering ranging from 3 – 150 tons.



Product Type	Size Range
Sun Core	3-12.5T
Sun Pro	3-12.5T
Sun Choice	15-27.5T
Sun Select	27.5-50T
Sun Premier	25-50T
YPAL	50-150T
Small Sunline	3-6T
Large Sunline	15-25T

From residential furnaces, to condensers, to heat pumps... We have it all!

Backed by Johnson Controls, YORK® products are designed and manufactured to the highest standards. Their reputation for quality is ensured by one of the strongest warranty packages in the industry.



Visit fwwebb.com/locations to find a stocking location near you.

**YORK equipment is not available in Pennsylvania. Comparable Fraser-Johnston equipment is available in its place.*



F.W. WEBB COMPANY



ZONE DAMPERS AND PANELS – HONEYWELL

Honeywell
Home

WEBB #	MFR #	DESCRIPTION
373814	HONHZ311K	ZNG KIT TRUEZONE F/1STG/3ZONE
373817	HONHZ322K	ZNG KIT TRUEZONE F/2STG HP
373818	HONHZ432K	ZNG KIT TRUEZONE F/CNVNL HP
409695	HONTHM4000R1000	WRLSS ADPT F/RDLNK ENABLED HMDRF & TSTAT
521968	HONZD8X8TZ/U	ZONE DMPR TRUEZONE PAR BLD 8x8" SQ
521957	HONZD8X10TZ/U	ZONE DMPR TRUEZONE PAR BLD 8x10" RECT
521958	HONZD8X12TZ/U	ZONE DMPR TRUEZONE PAR BLD 8x12" RECT
521959	HONZD8X14TZ/U	ZONE DMPR TRUEZONE PAR BLD 8x14" RECT
521960	HONZD8X16TZ/U	ZONE DMPR TRUEZONE PAR BLD 8x16" RECT
521857	HONZD10X8TZ/U	ZONE DMPR TRUEZONE PAR BLD 10x8" RECT
521868	HONZD12X8TZ/U	ZONE DMPR TRUEZONE PAR BLD 12x8" RECT
521879	HONZD14X8TZ/U	ZONE DMPR TRUEZONE PAR BLD 14x8" RECT
521890	HONZD16X8TZ/U	ZONE DMPR TRUEZONE PAR BLD 16x8" RECT
521901	HONZD18X8TZ/U	ZONE DMPR TRUEZONE PAR BLD 18x8" RECT
521911	HONZD20X8TZ/U	ZONE DMPR TRUEZONE PAR BLD 20x8" RECT
521846	HONZD10X10TZ/U	ZONE DMPR TRUEZONE PAR BLD 10x10" SQ
521847	HONZD10X12TZ/U	ZONE DMPR TRUEZONE PAR BLD 10x12" RECT
521848	HONZD10X14TZ/U	ZONE DMPR TRUEZONE PAR BLD 10x14" RECT
521849	HONZD10X16TZ/U	ZONE DMPR TRUEZONE PAR BLD 10x16" RECT
521850	HONZD10X18TZ/U	ZONE DMPR TRUEZONE PAR BLD 10x18" RECT
521851	HONZD10X20TZ/U	ZONE DMPR TRUEZONE PAR BLD 10x20" RECT
521859	HONZD12X12TZ/U	ZONE DMPR TRUEZONE PAR BLD 12x12" SQ
521860	HONZD12X14TZ/U	ZONE DMPR TRUEZONE PAR BLD 12x14" RECT
521970	HONZD12X16TZ/U	ZONE DMPR TRUEZONE PAR BLD 12x16" RECT
521861	HONZD12X18TZ/U	ZONE DMPR TRUEZONE PAR BLD 12x18" RECT
521862	HONZD12X20TZ/U	ZONE DMPR TRUEZONE PAR BLD 12x20" RECT
521892	HONZD18X12TZ/U	ZONE DMPR TRUEZONE PAR BLD 18x12" RECT
521903	HONZD20X12TZ/U	ZONE DMPR TRUEZONE PAR BLD 20x12" RECT
521838	HONARD6TZ/U	AUTO DMPR TRUEZONE ARD 1BLD 6" RND
521839	HONARD7TZ/U	AUTO DMPR TRUEZONE ARD 1BLD 7" RND
521840	HONARD8TZ/U	AUTO DMPR TRUEZONE ARD 1BLD 8" RND
521831	HONARD10TZ/U	AUTO DMPR TRUEZONE ARD 1BLD 10" RND
521832	HONARD12TZ/U	AUTO DMPR TRUEZONE ARD 1BLD 12" RND
521833	HONARD14TZ/U	AUTO DMPR TRUEZONE ARD 1BLD 14" RND
476345	HONCPRD8/U	B-PAS DMPR TRUEZONE CSTNT PRES RGLTG 8"
476346	HONCPRD10/U	B-PAS DMPR TRUEZONE CSTNT PRES RGLTG 10"
476347	HONCPRD12/U	B-PAS DMPR TRUEZONE CSTNT PRES RGLTG 12"
476348	HONCPRD14/U	B-PAS DMPR TRUEZONE CSTNT PRES RGLTG 14"



2021 HVAC PRE-SEASON SPECIALS



TRADITIONAL, WI-FI AND REDLINK THERMOSTATS – HONEYWELL

WEBB #	MFR #	DESCRIPTION
493465	HONTH1100DV1000	TSTAT PRO 1000 NON PROG HEAT ONLY VERTICAL MOUNTED
493466	HONTH1110DV1009	TSTAT PRO 1000 NON PROG 1H/1C VERTICAL MOUNTED
765471	HONTH2110DH1002	TSTAT PRO 2000 PROGRAMMABLE THERMOSTAT 1H/1C
629352	HONTH1110D2009	TSTAT T1 PRO NON PROGRAMMABLE THERMOSTAT, 1H/1C
596972	HONTH4110U2005	TSTAT T4 PRO PROGRAMMABLE 1H/1C
573318	HONTH6210U2001	TSTAT T6 PRO PROG 2H/1C HP OR 1H/1C COVENTIONAL
573317	HONTH6220U2000	TSTAT T6 PRO PROG 2H/1C HP OR 2H/2C COVENTIONAL
573316	HONTH6320U2008	TSTAT T6 PRO PROG 3H/2C HP OR 2H/2C COVENTIONAL
475542	HONTH8110R1008	TSTAT VISION PRO W/REDLINK PROG 1H/1C TOUCHSCREEN
475543	HONTH8320R1003	TSTAT VISION PRO W/REDLINK PROG 3H/2C TOUCHSCREEN
475544	HONTH8321R1001	TSTAT VISION PRO W/REDLINK & IAQ CONTACTS PROG 3H/2C TOUCHSCREEN
573315	HONTH6220WF2006	TSTAT T6 PRO PROG WI-FI 2H/2C TOUCHSCREEN C-WIRE NEEDED
573314	HONTH6320WF2003	TSTAT T6 PRO PROG WI-FI 3H/2C TOUCHSCREEN C-WIRE NEEDED
706187	HONTHX321WFS2001W	TSTAT T10 PRO WITH INCLUDED ROOM SENSOR REDLINK AND WIFI
530633	HONTH8321WF1001	TSTAT VISION PRO WI-FI PROG 3H/2C TOUCHSCREEN C-WIRE NEEDED
488211	HONTH9320WF5003	TSTAT WI-FI 9000 PROG 3H/2C COLOR TOUCHSCREEN C-WIRE NEEDED
584618	NRDFAST-STAT	FAST STAT COMMON MAKER



T6 Pro Lyric



PRO 1000



T1 PRO



T6 PRO



VisionPro



T10 Pro with Room Sensor



WiFi 9000 Programmable Touch Screen





THERMOSTATS – PUREPRO

WEBB #	MFR #	DESCRIPTION
320352	PROMLV2	TSTAT PUREPRO LINE VOLTAGE HEAT ONLY
314729	PROD110	TSTAT PUREPRO DIGITAL NON-PROG VERTICAL MOUNT 24V
241267	PROD111	TSTAT PUREPRO DIGITAL NON PROGRAMMABLE H&C
364078	PROD210	TSTAT PUREPRO DIGITAL NON PROGRAMMABLE HEAT ONLY
241268	PRODP511	TSTAT PUREPRO DIGITAL PROG 24VAC 1H/1C 5-2D
489832	PRODP521U	TSTAT PUREPRO UNIV 24V 2H/1C 5DAY /2 DAY
511192	PRODP722U	TSTAT PUREPRO UNIV H/C 2STG
511191	PRODP721UT	TSTAT PUREPRO UNIV TOUCHSCREEN 24V 2H/1C 7D



D110



D111



D210



DP511



DP521U



DP722U



DP721UT

WI-FI THERMOSTATS – ECOBEE

WEBB #	MFR #	DESCRIPTION
468207	ECBEB-EMSSI-01	EMS SI WI-FI THERMOSTAT
595336	ECBEB-STATE3LTP-02	ECOBEE 3 LITE THERMOSTAT PRO
735017	ECBEB-STATE5P-01	ECOBEE SMART THERMOSTAT PRO W/ VOICE CONTROL
735016	ECBEB-RSHM2PK-01	SMART REMOTE SENSOR PACK(2) FOR ECOBEE 3

FAST STAT COMMON MAKER AVAILABLE.



THERMOSTAT WIRE

WEBB #	MFR #	DESCRIPTION
2597	ELETW18/2-500	WIRE TSTAT 18/2 500' BRWN
2598	ELETW18/3-500	WIRE TSTAT 18/3 500' BRWN
88328	ELETW18/4-250	WIRE TSTAT 18/4 250' BRWN
70312	ELETW18/5-250	WIRE TSTAT 18/5 250' BRWN
149494	ELETW18/6-250	WIRE TSTAT 18/6 250' BRWN
149495	ELETW18/8-250	WIRE TSTAT 18/8 250' BRWN
411971	ELE18.2STRSTAT-500	TSTAT WIRE 18/2 500' STRANDED
40873	PAS1716	ELE TAPE 3/4"x60' VNYL



2021 HVAC PRE-SEASON SPECIALS

HUMIDIFIERS

WEBB #	MFR #	DESCRIPTION
431480	HONHE100A1000	TRUE EASE 12 GPD BASIC BYPASS W/HUMIDPRO
431481	HONHE150A1005	TRUE EASE 12 GPD ADVANCED BYPASS W/HUMIDPRO AUTO CLOSE DAMPER
431482	HONHE200A1000	TRUE EASE 17 GPD BASIC BYPASS W/HUMIDPRO
431483	HONHE250A1005	TRUE EASE 17 GPD ADVANCED BYPASS W/HUMIDPRO AUTO CLOSE DAMPER
431484	HONHE300A1005	TRUE EASE 18 GPD ADVANCED FAN POWERED W/HUMIDPRO AUTO CLOSE DAMPER
370517	HONHC22E1003	HUMIDIFIER PAD - FOR HE100 & HE150
370518	HONHC26E1004	HUMIDIFIER PAD - FOR HE200, HE250, HE300
604311	HONHM750A1000/U	HONEYWELL STEAM HUMIDIFIER 120/240V DUCT MOUNT OR REMOTE MOUNT W/HOSE KIT
604312	HONHM750ACYL/U	HMDFR REPL CANISTER FOR STEAM HUMIDIFIER

Honeywell
Home



DEHUMIDIFIERS

WEBB #	MFR #	DESCRIPTION
613096	HONDR65A3000	DHUMW WHLHS 65PT/DAY 120V
613097	HONDR90A3000	DHUMW WHLHS 90PT/DAY 120V
613095	HONDR120A3000	DHUMW WHLHS 120PT/DAY 120V
634500	UARUA70H	DHUMI WHLHS VNTG 70PT / DAY 120V
634501	UARUA98H	DHUMI WHLHS VNTG 98PT / DAY 120V
639397	UARUA120H	DHUMI WHLHS VNTL HOR 121PT / DAY 120V

Honeywell
Home



Ultra-Aire™
WHOLE HOUSE VENTILATING DEHUMIDIFIERS



AIR CLEANERS MEDIA AND ELECTRONIC

WEBB #	MFR #	DESCRIPTION
660689	HONF100F1620	AIR CLNR MEDIA 16x20" DUCT 1200CFM
660690	HONF100F1625	AIR CLNR MEDIA 16x25" DUCT 1400CFM
370494	HONF100F2036	AIR CLNR MEDIA 20x20" DUCT 1400CFM
660692	HONF100F2025	AIR CLNR MEDIA 20x25" DUCT 2000CFM
202346	TRN455602-125	AIR CLNR AIR BEAR 16x24-1/4x5" 1400CFM
202345	TRN455602-025	AIR CLNR AIR BEAR 20x24-1/4x5" 2000CFM
255962	TRN455602-225	AIR BEAR 20X20 ULT 435790
202347	TRN447380-010	AIR CLNR 20x24-1/2x5" RGT ANG 2000CFM
370487	HONF300E1001	AIR CLNR ELECTRONIC 16x20"
370488	HONF300E1019	AIR CLNR ELECTRONIC 16x25"
370489	HONF300E1027	AIR CLNR ELECTRONIC 20x20"
370490	HONF300E1035	AIR CLNR ELECTRONIC 20x25"

Honeywell
Home



TRION®
air purification systems



F.W. WEBB 2021

HVAC Dealer Marketing Programs



We all know time is a valuable resource. Are you making the most of yours by participating in dealer marketing programs?

F.W. Webb has partnered with some of our top manufacturers to bring you a suite of tools to simplify and enrich your marketing, training and business development efforts.



YORK's Dealer Success Programs



Resideo Pro PERKS



HVAC Preferred Dealer Program

It's your brand, your business, your bottom line. Ask your sales representative to schedule a meeting with you and F.W. Webb's Dealer Development Manager. Find out how you can take advantage of these easy-to-use programs and tools to promote and advance your business.

Already a program member? Consider a meeting to make sure you are taking full advantage of all the program benefits.

Contact Laura Bassett: laura.bassett@fwwebb.com or 978-987-5590.



F.W. WEBB COMPANY



2021 HVAC PRE-SEASON SPECIALS

PREMIERONE WHOLE HOME HEPA FILTRATION AND ACCESSORIES

WEBB #	MFR #	DESCRIPTION
781937	PMRHP500	HEPA AIR CLEANER DUCT MT RETURN 300 CFM 120V WHOLE HOUSE
819917	PMRCKM500	COLLAR MOUNT 8" DUCT KIT FOR REMOTE MOUNT
781934	PMRARK564	ANNUAL PRE-FILTER REPLACEMENT KIT FOR HP500
781952	PMRRHF562	REPLACEMENT HEPA FILTER FOR HP500
781936	PMRFS003	CURRENT SENSING SWITCH

PREMIERONE™



PREMIERONE WHOLE HOME POLARIZED MEDIA AIR CLEANER

WEBB #	MFR #	DESCRIPTION
781947	PMRP6100-1620	WHOLE HOUSE POLARIZED MEDIA AIR CLEANER 24V 16X20X1"
781948	PMRP6100-1625	WHOLE HOUSE POLARIZED MEDIA AIR CLEANER 24V 16X25X1"
781949	PMRP6100-2020	WHOLE HOUSE POLARIZED MEDIA AIR CLEANER 24V 20X20X1"
781950	PMRP6100--2025	WHOLE HOUSE POLARIZED MEDIA AIR CLEANER 24V 20X25X1"
781940	PMRMS-1620	REPLACEMENT MEDIA PACK F/POLARIZED AIR CLEANER 3 PACK
781941	PMRMS-1625	REPLACEMENT MEDIA PACK F/POLARIZED AIR CLEANER 3 PACK
781942	PMRMS-2020	REPLACEMENT MEDIA PACK F/POLARIZED AIR CLEANER 3 PACK
781943	PMRMS-20X25	REPLACEMENT MEDIA PACK F/POLARIZED AIR CLEANER 3 PACK
819918	PMRP6100-16X25EX-RF	WHOLE HOUSE POLARIZED MEDIA AIR CLEANER 24V FITS HONEYWELL/TRION 16X25
819919	PMRP6100-20X20EX-RF	WHOLE HOUSE POLARIZED MEDIA AIR CLEANER 24V FITS HONEYWELL/TRION 20X20
819920	PMRP6100-20X25EX-RF	WHOLE HOUSE POLARIZED MEDIA AIR CLEANER 24V FITS HONEYWELL/TRION 20X25

PREMIERONE™



AIR AND MEDIA FILTERS (CASE QUANTITY ONLY)

WEBB #	MFR #	DESCRIPTION
242697	FIL14X24X1P	FLTR PLTD 14x24x1"
242698	FIL14X30X1P	FLTR PLTD 14x30x1"
76475	FIL16X25X1P	AIR FLTR PLTD 16x25x1"
76477	FIL20X20X1P	AIR FLTR PLTD 20x20x1"
112357	FIL20X25X1P	AIR FLTR PLTD 20x25x1"
193412	FIL20X30X1P	FLTR PLTD 20x30x1"
76480	FIL16X25X2P	AIR FLTR PLTD 16x25x2"
76481	FIL20X20X2P	AIR FLTR PLTD 20x20x2"
76482	FIL20X25X2P	AIR FLTR PLTD 20x25x2"
165508	FIL25X25X2P	FLTR PLTD 25x25x2"
202348	TRN255649-101	AIR FLTR AIR BEAR 16x25x3" MERV 8
184307	TRN255649-102	AIR FLTR AIR BEAR 20x25x5" MERV 8
283320	TRN255649-103	AIR FLTR AIR BEAR 20x20x5" MERV 8
283321	TRN255649-105	AIR FLTR AIR BEAR 16x25x5" MERV 8
370501	HONFC100A1003	AIR FLTR MEDIA REPL 16x20"
370502	HONFC100A1011	AIR FLTR MEDIA 20x20"

TRION™
air purification systems



MORE SIZES AVAILABLE.

AIR AND MEDIA FILTERS (CASE QUANTITY ONLY)

WEBB #	MFR #	DESCRIPTION
370503	HONFC100A1029	AIR FLTR MEDIA 16x25"
370504	HONFC100A1037	AIR FLTR MEDIA 20x25"
322036	HONPOPOP1620	AIR FLTR POPUP MEDIA 16x20"
322035	HONPOPOP1625	AIR FLTR POPUP MEDIA 16x25"
322034	HONPOPOP2020	AIR FLTR POPUP MEDIA 20x20"
322033	HONPOPOP2025	AIR FLTR POPUP MEDIA 20x25"

MORE SIZES AVAILABLE.

Honeywell
Home



ULTRAVIOLET AIR PURIFICATION

WEBB #	MFR #	DESCRIPTION
488815	HONUUV2400U1000	AIR PURIFIER 24V UV RET/SPLY MNT
488816	HONUUV2400U5000	AIR PURIFIER 24V UV WITH AIRBRIGHT ODOR
534452	RGFREME-H	REME HALO DUCT MOUNT AIR PURIFIER
841568	RGFREME-LED	AIR PURIFIER DUCT MOUNT WHOLE HOME LED BULB
625517	CAL4900-35	IWAVE AIR PURIFIER FOR MINI SPLIT UP TO 36" COIL 120/240 VOLTAGE
585141	CAL4900-20	IWAVE-R AIR PURIFIER 2400 CFM/6 TON RESIDENTIAL UNIVERSAL VOLTAGE
585140	CAL4900-10	IWAVE-C AIR PURIFIER 4800 CFM/12 TON COMMERCIAL UNIVERSAL VOLTAGE
399779	FIEUV-16/24	UV AIR PURIFIER 16" 24 VOLT 62 MICRO WATTS DUCT MOUNT
216010	FIEUV-12	UV AIR PURIFIER 12" 120 VOLT 37 MICRO WATTS DUCT MOUNT
493291	FIEUV-17FM	UV AIR PURIFIER TWIN TUBE 24 VOLT 110 MICROWATTS FLEX MOUNT DUCT
216011	FIEUV-18	UV AIR PURIFIER 18" 120 VOLT 73 MICRO WATTS DUCT MOUNT
493274	FIEDUO-2000	UV AIR PURIFIER AND AIR DEODORIZER 120 VOLT DUCT MOUNT
781946	PMRMUV750DR16	UV GERMICIDAL AIR PURIFIER WITH ODOR CONTROL - W/16" GERM LAMP 120/240V
781939	PMRLSK07403H-16/5	REPLACEMENT LAMP SERVICE KIT FOR 403H/50DR/50PS
781945	PMRMUV750PS16	UV GERMICIDAL AIR PURIFIER - W/16" GERM LAMP 120/240V
781944	PMRMUV750OU	ADD-ON ODOR CONTROL UNIT TO ABOVE TO MAKE AIR PURIFIER W/ ODOR CONTROL
848266	PMRMUV7-100DR-16	UV LIGHT TWO BULB 16" 360 MICROWATT - TWICE THE KILLING POWER
848263	PMRMUV-403H-16	UV LIGHT AND ODOR CONTROL COMBO UNIT SINGLE MTG 180 MW AIR PURIFIER
781935	PMRER-UV14-24V	REMOTE MOUNT UV LIGHT 24V 14" LAMP 55W
781938	PMRLSK-24V	REPLACEMENT LAMP FOR ER-UV-24V 14"

Honeywell
Home



FIELD CONTROLS



PREMIERONE™



2021 HVAC PRE-SEASON SPECIALS

CAPACITORS AND CONTACTORS

WEBB #	MFR #	DESCRIPTION
359443	MRC12100	RUN CAP TURBO 200MINI UNIV RND CAN
309823	MRC12200	RUN CAP TURBO 200 UNIV RND CAN 2.5-67.5
453770	MRC12300	RUN CAP TURBO 200X UNIV RND CAN 2.5-97.5
90973	MRC12005	RUN CAP 5MFD 370V OVL
90974	MRC12007	RUN CAP 7.5MFD 370V OVL
90975	MRC12008	RUN CAP 10MFD 370V OVL
90983	MRC12010	RUN CAP 15MFD 370V OVL
194463	MRC12069	RUN CAP OVL 30/5MFD 370V
186089	MRC12072	RUN CAP OVL 35/5MFD 370V
221969	MRC12174	RUN CAP OVL 45/5MFD 370V
221978	MRC12191	RUN CAP RND 50/5MFD 370V
102487	MRC12185	RUN CAP OVL 35/5MFD 440V
221940	MRC12086	RUN CAP OVL 40/5MFD 440V
221977	MRC12190	RUN CAP OVL 45/5MFD 440V
222064	MRC12275	RUN CAP OVL 55/5MFD 440V
222076	MRC12281	RUN CAP RND 30/5MFD 440V
222086	MRC12283	RUN CAP RND 35/5MFD 440V
222089	MRC12286	RUN CAP RND 40/5MFD 440V
222091	MRC12288	RUN CAP RND 45/5MFD 440V
266738	MRC61755	CONTACT 614 DEF PURP 2P 40A 24V (TOP MOVER)
112442	MRC91321	CONTACT DEF PURP 2P 30A 24V
112161	MRC91421	CONTACT DEF PURP 2P 40A 24V
266724	MRC61430	CONTACT DEF PURP 3P 30A 24V 42BF35AJ
266725	MRC61431	CONTACT DEF PURP 3P 30A 120V 42BF35AF
266726	MRC61432	CONTACT DEF PURP 3P 30A 240V 42BF35AG
266727	MRC61445	CONTACT 614 DEF PURP 3P 40A 24V (TOP MOVER)
266728	MRC61446	CONTACT 614 DEF PURP 3P 40A 120V
266729	MRC61447	CONTACT 614 DEF PURP 3P 40A 208/240V
266733	MRC61460	CONTACT 614 DEF PURP 3P 50A 24V
266734	MRC61461	CONTACT 614 DEF PURP 3P 50A 120V
266735	MRC61462	CONTACT 614 DEF PURP 3P 50A 240V
266736	MRC61470	CONTACT 614 DEF PURP 3P 60A 24V
266737	MRC61472	CONTACT 614 DEF PURP 3P 60A 208/240V
432185	MRC61482	CONTACT 614 DEF PURP 3P 75A 240V



FILTER DRIERS AND SIGHT GLASS

WEBB #	MFR #	DESCRIPTION
189305	SPOC053S	FLTR DRIER 3/8" SWT LIQ LN
96170	SPOC083	FLTR DRIER 3/8" FLRE LIQ LN
192905	SPOC083S	FLTR DRIER 3/8" SWT LIQ LN
192906	SPOC163	FLTR DRIER 3/8" FLRE LIQ LN
187398	SPOC163S	FLTR DRIER 3/8" SWT LIQ LN
189311	SPOC164	FLTR DRIER 1/2" FLRE LIQ LN
204435	SPOC164S	FLTR DRIER 1/2" SWT LIQ LN



FILTER DRIERS AND SIGHT GLASS (CONT.)

WEBB #	MFR #	DESCRIPTION
98815	SPOC304	FLTR DRIER 1/2" FLRE LIQ LN
187404	SPOC304S	FLTR DRIER 1/2" SWT LIQ LN
98832	SPOC305	FLTR DRIER 5/8" FLRE LIQ LN
203793	SPOC305S	FLTR DRIER 5/8" SWT LIQ LN
187399	SPOC163SHH	FLTR DRIER HH CORE 3/8" SWT LIQ LN
187409	SPOHPC163SHH	FLTR DRIER HP 3/8" SWT LIQ LN
203766	SPOSA13S	SGHT GLS SEE-ALL 3/8" STL ODF SDR
203812	SPOC485G	FILTER DRYER CORE 5/8" SWEAT
203813	SPOC487G	FILTER DRYER CORE 7/8" SWEAT
203814	SPOC489G	FILTER DRYER CORE 1 1/8" SWEAT
203776	SPORCA-48	FILTER DRYER CORE
203777	SPORC4864HH	FILTER DRYER HH CORE
106786	SPORCW-48	FILTER DRYER CORE
277279	SPOOF-303T	OIL FILTER WITH ACCESS FITTINGS 3/8" FLARE - OIL LEVEL CONTROL



TRANSFORMERS AND RELAYS

WEBB #	MFR #	DESCRIPTION
35059	HONAT140A1000	TRANSF 120V 40VA 60HZ 24V
98623	HONAT140A1018	TRANSF 120/208/240V 40VA 60HZ 24V
191283	HONAT150F1022	TRANSF 120/208/240V 50VA 60HZ 24V
191284	HONAT175F1023	TRANSF W/MAN RSET 120/208/240V 75VA 60HZ
105535	F/DRIBU1C	PLT CTRL RLY SPDT 10A
105649	F/DRIBU2C	PLT CTRL RLY 2 SPDT 10A
204775	F/DRIB2401B	PWR CTRL RLY SPDT 120V 20A
67708	HONR4222D1013	120V GENERAL PURPOSE RELAY W/DPDT SWITCH
69623	HONR8222D1014	24V GENERAL PURPOSE RELAY W/DPDT SWITCH
54120	HONR8222B1067	24V GENERAL PURPOSE RELAY W/SPDT SWITCH
90968	MRC90340	POWER TO POWER RELAY 24 VOLT COIL
186188	MRC90290	GENERAL PURPOSE RELAY SPST 24 VOLT COIL
90965	MRC90293	GENERAL PURPOSE RELAY SPDT 24 VOLT COIL



Honeywell
Home

Functional
Devices, Inc.



MARS

CONDENSER FAN MOTORS

WEBB #	MFR #	DESCRIPTION
452313	USM5464	CF RESCUE 1/3 - 1/6HP 208/230V REV 825 RPM 5.6"
452312	USM5462	CF RESCUE 1/3-1/6HP 208/230V REV 1075 RPM 5.6"
452314	USM5465	CF RESCUE 1/2-1/6HP 208/230V REV 1075 RPM 5.6"
452298	USM1861	CF MTR 1/3HP 1075 208/230 5.6"
452297	USM1860	CF MTR 1/4HP 1075 208/230 5.6"
452299	USM1862	CF MTR 1/2HP 1075 208/230 5.6"



2021 HVAC PRE-SEASON SPECIALS

BLOWER MOTORS

WEBB #	MFR #	DESCRIPTION
452310	USM5460	BLWR MTR RESCUE 1/6-1/2HP 115V REV
452315	USM5470	BLWR MTR RESCUE 1/6-3/4HP 115V REV
452311	USM5461	BLWR MTR RESCUE 1/6-1/2HP 208-230V REV
452316	USM5471	BLWR MTR RESCUE 1/5-3/4HP 208-230V REV
452301	USM1864	DD BLWR MTR 1/3HP 1075 3SPD 115
452307	USM1972	DD BLWR MTR 1/3HP 1075 3SPD 208/230
452302	USM1865	DD BLWR MTR 1/2HP 1075 3SPD 115
452308	USM1973	DD BLWR MTR 1/2HP 1075 3SPD 208/230
452320	USM8904	DD BLWR MTR 3/4HP 1075 3SPD 115
452321	USM8905	DD BLWR MTR 3/4HP 1075 3SPD 208/230
532732	MRC10860	MTR AZURE ECM 1/5-1/2HP 115/230V REV (X13 REPL)
532754	MRC10861	MTR AZURE ECM 1/2-1HP 115/230V REV 1075R (X13 REPL)



U.S. MOTORS – ECM MOTOR RESCUE FAMILY OF MOTORS FOR BLOWER APPLICATION



WEBB #	MFR #	DESCRIPTION
783803	USM5632 (X13 REPLACEMENT)	RESCUE EZ13 BLOWER MTR 1/3-1/2HP 115/208V UNIV REPLACEMENT (X13)
783804	USM5642 (X13 REPLACEMENT)	RESCUE EZ13 BLOWER MTR 3/4HP 115/208V UNIV REPLACEMENT (X13)
783805	USM5652 (X13 REPLACEMENT)	RESCUE EZ13 BLOWER MTR 1 HP 115/208V UNIV REPLACEMENT (X13)
783808	USM5862 (16 PIN VARIABLE SPEED REPLACEMENT)	RESCUE EZ16 BLOWER MTR 1/3-1/2HP 115/208V UNIV REPLACEMENT
783807	USM5861 (16 PIN VARIABLE SPEED REPLACEMENT)	RESCUE EZ16 BLOWER MTR 1/3-3/4HP 115/208V UNIV REPLACEMENT
783806	USM5860 (16 PIN VARIABLE SPEED REPLACEMENT)	RESCUE EZ16 BLOWER MTR 1/3-1HP 115/208V UNIV REPLACEMENT
783810	USM6633 (X13 REPLACEMENT FIELD PROGRAMMABLE)	RESCUE SELECT PRO 1/3-1/2HP 115/208V PROGRAM TO FURNACE MODEL W/APP
783811	USM6643 (X13 REPLACEMENT FIELD PROGRAMMABLE)	RESCUE SELECT PRO 3/4HP 115/208V PROGRAM TO FURNACE MODEL W/APP
783812	USM6653 (X13 REPLACEMENT FIELD PROGRAMMABLE)	RESCUE SELECT PRO 1 HP 115/208V PROGRAM TO FURNACE MODEL W/APP



EVERGREEN GENTEQ NEW ECM MOTOR RESCUE FAMILY OF MOTORS FOR BLOWER APPLICATION



WEBB #	MFR #	DESCRIPTION
671005	RGL6005	EVERGREEN IM 1/5-1/2HP 115/208V ECM DROP IN REPLACEMENT FOR PSC 1075RPM
671006	RGL6010	EVERGREEN IM 1/2-1HP 115/208V E CM DROP IN REPLACEMENT FOR PSC 1075RPM
671008	RGL6105E	EVERGREEN EM 1/2HP 115V UNIV REPLACEMENT (X13)
671009	RGL6107E	EVERGREEN EM 3/4HP 115V UNIV REPLACEMENT (X13)
671010	RGL6110E	EVERGREEN EM 1 HP 115V UNIV REPLACEMENT (X13)
783800	RGL6505V (16 & 4 PIN VARIABLE SPEED REPLACEMENT)	EVERGREEN VS 1/2HP 120/240V UNIV REPLACEMENT VARIABLE SPEED 1050RPM
783801	RGL6507V (16 & 4 PIN VARIABLE SPEED REPLACEMENT)	EVERGREEN VS 3/4HP 120/240V UNIV REPLACEMENT VARIABLE SPEED 1050RPM
783802	RGL6510V (16 & 4 PIN VARIABLE SPEED REPLACEMENT)	EVERGREEN VS 1 HP 120/240V UNIV REPLACEMENT VARIABLE SPEED 1050RPM
783798	RGL5K010	EVERGREEN VS USER INTERFACE USED TO PROGRAM VS MOTORS



REFRIGERATION UTILITY MOTORS

WEBB #	MFR #	DESCRIPTION
252302	SUPSM675	MTR KIT 120/240V UTI CW/CCW 3000RPM
252313	SUPSM670	MTR KIT 120V UTI CW/CCW 3000RPM



REFRIGERATION EVAP MOTORS – WATT AND 3.3"

WEBB #	MFR #	DESCRIPTION
597082	USMEC5411E	RESCUE MTR 4-25W 550-1725RPM CWOSE
597083	USMEC5412E	RESCUE MTR 4-25W CCWOSE 1550-1725RPM
465473	USM9664	FAN MOTOR 1/12 - 1/20HP 1550RPM 115/230V 3.3"
223304	MRCD1124	FAN MOTOR 1/20HP 1500 RPM 115V 3.3"
441485	MRCD1127	FAN MOTOR 1/12 - 1/20HP 1550RPM 115/230V 3.3"
223306	MRCD1125	FAN MOTOR 1/2HP 1500RPM 208/230V 3.3"
223305	MRCD1126	FAN MOTOR 1/15HP 1500RPM 230V 3.3"
532731	MRC10850	AZURE ECM 1/15-1/25HP 115/230V REV 1550/800 RPM 3.3"



REFRIGERATION CONDENSER MOTORS

WEBB #	MFR #	DESCRIPTION
222492	TCS810E037A84	FAN MTR 1/20HP 230V SGL TFM372 1500RPM
222494	TCS810E050A85	FAN MTR 1-1/5HP 230V SGL TFM502 1500RPM
463708	USM1775P	FAN MTR 1/20HP 230V 1PH REPL TFM372
463709	USM1779P	FAN MTR 1/15HP 230V 1PH REPL TFM502



2021 HVAC PRE-SEASON SPECIALS

COMPRESSOR START ASSIST KITS

WEBB #	MFR #	DESCRIPTION
243063	SUPRC0810	RELAY CAPACITOR OVERLOAD 3-IN-1 - 1/12HP - 1/5HP COMPRESSORS
240695	SUPRC0410	RELAY CAPACITOR OVERLOAD 3-IN-1 - 1/4HP - 1/3HP COMPRESSORS
309114	SUPRC0210	RELAY CAPACITOR OVERLOAD 3-IN-1 - 1/3HP - 1/2HP COMPRESSORS
105191	SUPSPP5	HRD STRT KIT POW-R-PAK 115-288V
99250	SUPSPP6	HRD STRT KIT SUPR BOOST 115-230V
415850	SUPSPP7S	HARD START KIT SUPER 7
240699	SUPSPP8E	HRD STRT KIT E CLS PTNTL RLY 90-277V
240700	SUPSUPR	UNIVERSAL POTENTIAL RELAY



SCREWS

WEBB #	MFR #	DESCRIPTION
49286	PRO11016	SCRW PUREPRO JIFFY PT #8x1/2" 1000/BX
49288	PRO11026	SCRW PUREPRO JIFFY PT #8x3/4" 1000/BX
100994	M/CHW8X12ZT	MALCO SCRW ZIP-IN #8X1/2" 1000BX
103535	M/CHW8X34ZT	MALCO SCRW ZIP-IN #8X3/4" 1000BX
155272	PRO11206	SCRW PUREPRO JIFFY DRILL TIP #8x1/2"
112684	PRO11268	SCRW PUREPRO JIFFY DRILL TIP #10x3/4 500/BX



BELTS

WEBB #	MFR #	DESCRIPTION
430495	BRWA20	V BELT SUPER GRIPBELT A WRAPPED 22"
430496	BRWA21	V BELT SUPR GRPBELT A WRAPPED 23"
430497	BRWA22	V BELT SUPR GRPBELT A WRAPPED 24"
430498	BRWA23	V BELT SUPER GRIPBELT A WRAPPED 25"
430499	BRWA24	V BELT SUPR GRPBELT A WRAPPED 26"
430500	BRWA25	V BELT SUPR GRPBELT A WRAPPED 27"
430501	BRWA26	V BELT SUPR GRPBELT A WRAPPED 28"
430502	BRWA27	V BELT GRIPNOTCH A WRAPPED 28"
430503	BRWA28	V BELT SUPER GRIPBELT A WRAPPED 29"
430504	BRWA29	V BELT SUPER GRIPBELT A WRAPPED 30"
430505	BRWA30	V BELT SUPER GRIPBELT A WRAPPED 31"
430506	BRWA31	V BELT SUPR GRPBELT A WRAPPED 33"
430507	BRWA32	V BELT SUPR GRPBELT A WRAPPED 34"
430508	BRWA33	V BELT SUPR GRPBELT A WRAPPED 35"
430523	BRWA48	V BELT SUPR GRPBELT A WRAPPED 50"
430535	BRWA60	V BELT SUPR GRPBELT A WRAPPED 62"
339559	CAL408303	V BELT DRESSING 16OZ ARSL

MORE SIZES AVAILABLE.

Browning



REFRIGERANT FLUSH AND SEALANTS

WEBB #	MFR #	DESCRIPTION
559915	CAL4050-05	INJTR EASY SEAL UNDR 1.5T
585136	CAL4050-11	EASYSEAL DIR INJECT - UV DYE
530249	CAL4050-08	A/C EASY SEAL DIR INJ 1.5T - 5.0T
277270	DTC947KIT	SUPR SEAL ACR LEAK SEAL KIT UP TO 1-1/2 TONS
428513	DTC972KIT	SUPERSEAL TOTAL W/DYE 1.5-5TON
277271	DTC944KIT	SUPR SEAL HVACR LEAK SEAL KIT UP TO 5 TONS
412531	DTC948KIT	SUPER SEALER COMM 5 TON / 17
557885	DTC20122	HOS CLR REUSABLE F/SUPR CHANGE
514212	CAL4057-55	UNPRESSURIZED CAN A/C RE-NEW 4OZ
428687	CAL4300-08	RX11 1LB FLUSH KIT
339615	CAL4300-11	FLSH SYS CANISTER RX11 FLUSH 2LB REFG
424656	DTCPF-KIT	FLSH KIT HVAC
424655	DTCPF-16	PRO FLUSH 16OZ CAN
839921	FREPROCHGR22	R-22 DYE/SEALANT 2LB CONTAINER
839922	FREPROCHGR410A	R-410A DYE/SEALANT 2LB CONTAINER



REFRIGERANT LEAK DETECTION – SPECTROLINE

WEBB #	MFR #	DESCRIPTION
501905	STSSPE-HVLEZE	EZ-JECT COMPLETE FLUORESCENT LEAK DETECTION KIT - USES EZ5E-CS REPLACEMENT CART
501906	STSSPE-HVLGSE	GLO-STICK COMPLETE FLUORESCENT LEAK DETECTION KIT - USES GS2E/GS3E REPLACEMENT CART
501903	STSSPE-HVLBEZE	BIG EZ COMPLETE FLUORESCENT LEAK DETECTION KIT - USES GS2E/GS3E REPLACEMENT CART
534456	STSSPE-EZ100E-CS	EZ-JECT FLUORESCENT DYE INJECTION KIT - USES BEZ5E-4CS REPLACEMENT CARTRIDGE
320245	STSSPE-EZ5E-CS	FLUORESCENT DYE CARTRIDGE
501901	STSSPE-GS2E-CS	DYE LK CPSL UNIV/POE 5.9/9LBS REFG
501902	STSSPE-GS3E-CS	DYE LK CPSL UNIV/POE 10/25LBS REFG
501898	STSSPE-BEZ5E-4CS	DYE LK CPSL UNIV/POE 400LBS REFG
400757	STASAB-100CS	INJECTION KIT ACID-BUSTER
400756	STASAB-5CS	REPLACE CARTRIDGE FOR AB-100CS



2021 HVAC PRE-SEASON SPECIALS

CHEMICALS, CLEANERS AND SEALANTS



WEBB #	MFR #	DESCRIPTION
ICE MACHINE MAINTENANCE		
185101	CAL4207-47	ICE MACH CLNR LIQ 8OZ BTL
339600	CAL4287-34	ICE MACH CLNR NKL SAFE LIQ 16OZ BTL
243855	CAL4211-34	ICE MACH SANITIZER LIQ 16OZ BTL
221357	CAL4287-08	ICE MACH CLNR NKL SAFE LIQ 1GAL BTL
221355	CAL4207-08	ICE MACH CLNR LIQ 1GAL BTL



EVAPORATOR CLEANERS		
339582	CAL4171-75	EVAP FOAM AEROSOL 18OZ
440266	CAL4166-75	EVAP COIL EVAP FRESH AEROSOL 18OZ
519578	CAL4166-08	EVAP FRESH COIL CLNR GAL
339580	CAL4168-08	COIL CLNR EVAP POW'R LIQ 1GAL BTL
412072	CAL4191-08	COIL CLNR EVAP-GRN LIQ 1GAL



CONDENSER CLEANERS		
339601	CAL4290-75	COIL CLNR NU-BLAST 18OZ ARSL
527042	CAL4127-75	COND & EVAP COIL CLNR BLAWKHAWK 18OZ ARSL
339584	CAL4178-08	COIL CLNR FM BRITE ALK 1GAL BTL
339604	CAL4291-08	COIL CLNR NU-BRITE 1GAL BTL
412071	CAL4190-08	COIL CLNR CAL-GRN LIQ 1GAL CND SR
339568	CAL4120-08	DGRSR ALKA-BRITE PLUS LIQ BTL 1GAL



MULTI CLEANERS		
221343	CAL4133-08	CAL-BRITE EVAP/CONDR CLEANER GAL
339572	CAL4135-08	CALCLEAN NU-CALGON BTL 1GAL
339575	CAL4143-08	SPECIAL HD
440277	CAL4371-88	COIL CLNR TRI-POW'R HD LIQ 1GAL



REFRIGERATION TECHNOLOGY CLEANERS AND LEAK DETECTORS

WEBB #	MFR #	DESCRIPTION
283813	RETRT375A	COIL CLEANER VIPER 18OZ ARESOL CAN
452516	RETRT390G	COIL CLEANER VIPER 1 GALLON JUG
400941	RETRT201B	NYLOG BLUE GASKET AND THREAD SEALANT
493425	RETRT200R	NYLOG RED GASKET AND THREAD SEALANT
528580	RETRT400P	HEAT BLOCKING PUTTY WET RAG 12OZ CAN
454360	RETRT100G	LEAK DETECTOR BIG BLU GALLON
283812	RETRT100S	LEAK DETECTOR BIG BLU QUART SPRAY
241647	RETRT150G	LEAK DETECTOR BIG BLU SUBZERO GALLON
241646	RETRT150S	LEAK DETECTOR BIG BLU SUBZERO QUART SPRAY
468395	RETRT175B	LEAK DETECTOR BIG BLU 8OZ BRUSH ON DAUBER



MANIFOLDS AND HOSES

WEBB #	MFR #	DESCRIPTION
530643	TES5631550	DIGITAL MANIFOLD TESTO # 550 (2 VALVE & BLUETOOTH)
530644	TES5631557	DIGITAL MANIFOLD TESTO # 557 (4 VALVE & BLUETOOTH)
464064	TES0563-5703	DIGITAL MANIFOLD TESTO # 570 (4 VALVE & USB PORT)
546768	TES0563-0002	ACR PROBE KIT SMART WRLSS
641595	RIT40870	DIGITAL MANIFOLD W/TOUCHSCREEN BLUETOOTH
276187	RIT42004	2 VALVE BASIC MANIFOLD WITH 60" PLUS II HOSES
308270	RIT48868	MANIFOLD TITAN 4 VALVE 60" HOSE W/ COMPACT BALL VALVES
167075	RIT46022	MANIFOLD BRUTE II 4 VALVE WITH 60" HOSES
318650	JB125225	MANIFOLD ZEPPELIN 4 VALVE LESS HOSES
508014	JB122225	2 VALVE MANIFOLD 404,410,22 LESS HOSES
94411	RIT21984	CHARGE HOSE SET 1/4" X 48" BLUE/YEL/RED
94381	RIT21985	CHARGE HOSE SET 1/4" X 60" BLUE/YEL/RED
94413	RIT21986	CHARGE HOSE SET 1/4" X 72" BLUE/YEL/RED
428294	RIT29985	CHARGE HOSE KIT WITH BALL VALVES 1/4" X 60"
108747	RIT22986	CHARGE HOSE KIT WITH BALL VALVES 1/4" X 72"
465865	RIT18985	5/16" 4N1 BALL VALVE TOOL
94371	RIT18975	1/4" 4N1 BALL VALVE TOOL
309738	RIT19173	5/16" FEMAL QC X 1/4" MALE FLARE
94383	RIT25980	HOSE ADAPTER FLEXFLOW 1/4X9" B/V 3/PK RYB
263708	JBICCLS-60	CHARGE HOSE SET HP 60" KVLR BLUE/YEL/RED
217188	RIT60331	TUBE BNDR RCHT W/O REV 3/8-7/8
102841	JB1T20275	TOOL FLARE & SWAGE 1/8-3/4



2021 HVAC PRE-SEASON SPECIALS

NITROGEN REGULATORS

WEBB #	MFR #	DESCRIPTION
192708	T/T245-03P	PURGING REGULATOR NITROGEN 500 PSI
547492	WSNVN-500	REGULATOR/FLOWMETER 500 PSI
622511	WSNVN-650	REGULATOR/FLOWMETER 650 PSI
567252	UNINV1	NITROGRN FLOW INDICATOR

TurboTorch



WESTERN
a Scott Fetzer company



Variable Speed EC Motor

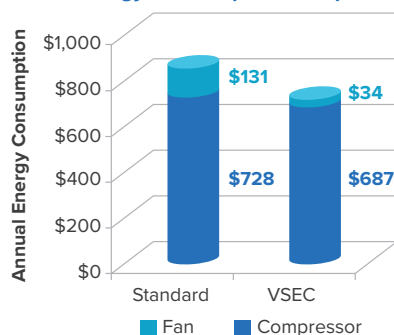
With Orbus™ Controller

The Variable Speed EC Motor with Orbus Controller incorporates the latest advances in micro-processor controls and motor technology to provide the most efficient condenser motors in the industry using integrated variable speed technology. The system is a variable speed EC motor paired with Heatcraft Refrigeration Products proprietary Orbus Controller.

- Significant performance improvement & energy savings
- Exclusive Variable Speed EC (VSEC) motor for 1/2 to 6 HP Condensing Units
- Proprietary Orbus Controller for Variable Speed EC Motors developed by Heatcraft
- Controller standard with Variable Speed EC Motor option



Annual Energy Consumption Comparison



Benefits & Advantages

- Provides a dramatic improvement in stable head pressure and liquid temperature
- Provides a significant reduction in fan motor power consumption
- Provides a more stable system
- Improves product integrity
- Improves compressor durability
- Reduces energy consumption

mass save
PARTNER

Efficiency
Vermont

Ask about current rebates at
<https://www.encyvermont.com>



www.heatcraftpd.com



RECOVERY MACHINES, SCALES AND VACUUM PUMPS

WEBB #	MFR #	DESCRIPTION
439793	APIG1SINGLE	REFG RECOV PMP APPION PTBL SGL CYL L/OIL
439792	APIG5TWIN	REFG RECOV PMP APPION PTBL TWN CYL L/OIL
370262	INF714-202-G1	REFG RECOV PMP VORTEX AC PTBL DBLE VLV
303156	INF713-202-G1	SCALE 220LB INFICON
372235	JBIDS-20000	REFG SCL ATLAS DIG 9V 220LB LCD
94367	RIT93540	VAC PMP SUPEREVAC PTBL 4CFM 1/2HP 115V
94368	RIT93560	VAC PMP SUPEREVAC PTBL 6CFM 1/2HP 115V
93767	JBIDV-142N	VAC PMP DP DD 2STG 5CFM BLNK OFF VLV
221510	JBIDV-200N	VAC PMP DP DD 2STG 7CFM BLNK OFF VLV
454382	JBIDV-285N	VAC PMP PLTM DD 2STG 10CFM 1/2HP
465792	INF700-100-P1	VAC PMP QS5 1/2HP
465793	INF710-202-G1	DIGITAL VACUUM GAUGE
221507	JBIDV-22N	DIGITAL VACUUM GAUGE
242580	SUPVG64	DIGITAL VACUUM GAUGE



DUCTWORK TOOLS

WEBB #	MFR #	DESCRIPTION
178796	M/CM2001	MAX2000 AVIATION SNIPS WITH RED GRIP (CUTS LEFT)
178797	M/CM2002	MAX2000 AVIATION SNIPS WITH GREEN GRIP (CUTS RIGHT)
178799	M/CM2005	BULLDOG AVIATION SNIP WITH RED GRIP (NOTCH/TRIMMING)
202375	M/CM2006	MAX2000 OFFSET AVIATION HAND SNIPS, LEFT CUTTING
202376	M/CM2007	MAX2000 OFFSET AVIATION HAND SNIPS, RIGHT CUTTING
73546	M/CTY4G	TIE TOOL MAN CUT-OFF W/GRP 6" STL F/NYL
75105	M/CTY6	TIE TOOL HIGH LEVERAGE W/AUTO CUT-OFF
75092	M/CFDC1	CTTR 11-7/8" FLEX DUCT
67563	M/CHC1	HOLE CTTR ADJ 2"-12"
163732	M/C18F	FLDG TOOL 18"
423435	M/CS6R	HND SEAMER REDLINE 6" W/STL JAW
423432	M/CC5R	CRIMPER REDLINE 5BLD 1-5/8" F/MTL DUCT
423434	M/CS3R	OFFSET HAND SEAMER 3"
423433	M/CS2R	HND SEAMER REDLINE 3" W/STL JAW
589256	M/CMSHC	1/4" & 5/16" REVERSIBLE MAGNETIC HEX CHUCK DRIVER (2" LONG)
671159	M/CMSHXL	1/4" AND 5/16" REVERSIBLE MAGNETIC HEX CHUCK DRIVER (6" LONG)



2021 HVAC PRE-SEASON SPECIALS

REFRIGERATION TEMPERATURE CONTROLS

WEBB #	MFR #	DESCRIPTION
183768	A22-1129	ICE BIN LEVEL CTRL SPDT
183778	A30-301	REF TMP CTRL SPST 84" CAP
218060	A12-700	REF TMP CTRL CON CUTIN 37F
218062	A12-701	REF TMP CTRL CON CUTIN 41F
218063	A12-1506	REF TMP CTRL CON CUTIN 38F 39"CAP
218065	A12-1560	REF TMP CTRL CON CUTIN 38F 72"CAP
218071	A30-180	REF TMP CTRL CON DIFFRN 42" CAP
218073	A30-261	REF TMP CTRL CON DIFFRN 6F 84" CAP
218074	A30-262	REF TMP CTRL CON DIFFRN 23F 84"CAP
218075	A30-2210	REF TMP CTRL CON DIFFRN 8F 48"CAP
183792	010-1408	REF TMP CTRL LOW TEMP -15F/40F 72"CAP
218097	010-1409	REF TMP CTRL MED TEMP 0F/55F AIR COIL
218098	010-1416	REF TMP CTRL MED TEMP 0F/55F 72"CAP
218099	010-1418	REF TMP CTRL MED TEMP 0F/55F BULB COIL
98260	A19BBC-2C	REF TEMP CTRL -30F/100F BULB COIL
104566	A19ABC-24C	REF TMP CTRL -30F/100F 8' RMT BULB
207381	A19ABA-40C	REF TMP CTRL 30F/100F 6' RMT BULB
155671	A19BAC-1C	REF TMP CTRL 30F/100FSPDT BULB COIL
108038	A11A-1C	TMP CUTOUT FREEZE STAT 35F/45F MAN RESET
96616	A11B-1C	TMP CUTOUT FREEZE STAT 35F/45F AUTO RESET
107435	A70HA-1C	TMP CTRL 2CIR 15F/55F MAN RESET
207438	A70HA-2C	TMP CTRL 2CIR 35F/80F MAN RESET
107560	A70GA-1C	TMP CTRL 2CIR 15F/55F AUTO REST



ELECTRONIC TEMPERATURE CONTROLS

WEBB #	MFR #	DESCRIPTION
205664	A421ABC-02C	ELECTRONIC TMP CTRL -40F/212F 120/240V
218085	ETC-111000-000	ELECTRONIC TMP CTRL -30F/220F 120/208-220
372227	T775B2032	TEMPERATURE CONTROLLER 2 INPUT - 2 SPDT OUTPUT
372228	T775M2048	TEMPERATURE CONTROLLER 2 INPUT - 2 SPDT & 1 AO OUTPUT
412750	T775U2006	TEMPERATURE CONTROLLER 1 INPUT - 1 SPDT OUTPUT



PRESSURE CONTROLS

WEBB #	MFR #	DESCRIPTION
183791	010-1402	LOW PRESSURE CTRL SPST 12"-50#
218119	010-1483	LOW PRESSURE CTRL SPST 10"-100#
218130	016-527	LOW PRESSURE CTRL SPDT 10"-100#
218131	016-624	LOW PRESSURE CTRL 5-38#DIF 12"-80# RANGE
218129	016-200	HIGH PRESSURE CTRL 150#/400# MAN RESET
112352	016-108	HIGH PRESSRE CTRL SPST 100#/400#
183755	012-1549	DUAL PRESSURE CTRL 10"/100#LO 150#/400#H AUTO
218152	012-4834	DUAL PRESSURE CTRL 10"/100#LO 150#/400# MAN
183795	010-2054	FAN CYCLING CTRL 100#/400#
103221	P70AB-2C	LOW PRESSURE CTRL 20'/100# SPST
101709	P70CA-3C	HIGH PRESSURE CTRL 50#/450 SPST
101915	P70LB-1C	DUAL PRESSURE CTRL 20'/100#LO 100#/500#H AUTO
100562	P70MA-1C	DUAL PRESSURE CTRL 20'/100#LO 100#/500#H MAN
98235	P70AA-118C	FAN CYCLING CTRL 100#/400# CL ON RISE SPST
463596	P70AA-400C	FAN CYCLING CTRL 100#/470# CL ON RISE SPST
106325	P45NCA-12C	LUBE OIL PRESSURE CTRL 120SEC DELAY 9PSI FIXED
103584	P66AAB-1C	ELEC FAN SPEED CTRL SINGLE INPUT 190#/250#
190587	P66ABB-21C	ELEC FAN SPEED CTRL NEMA 3R 200#/280#
102455	P66BAB-1C	ELEC FAN SPEED CTRL DUAL INPUT 190#/250#



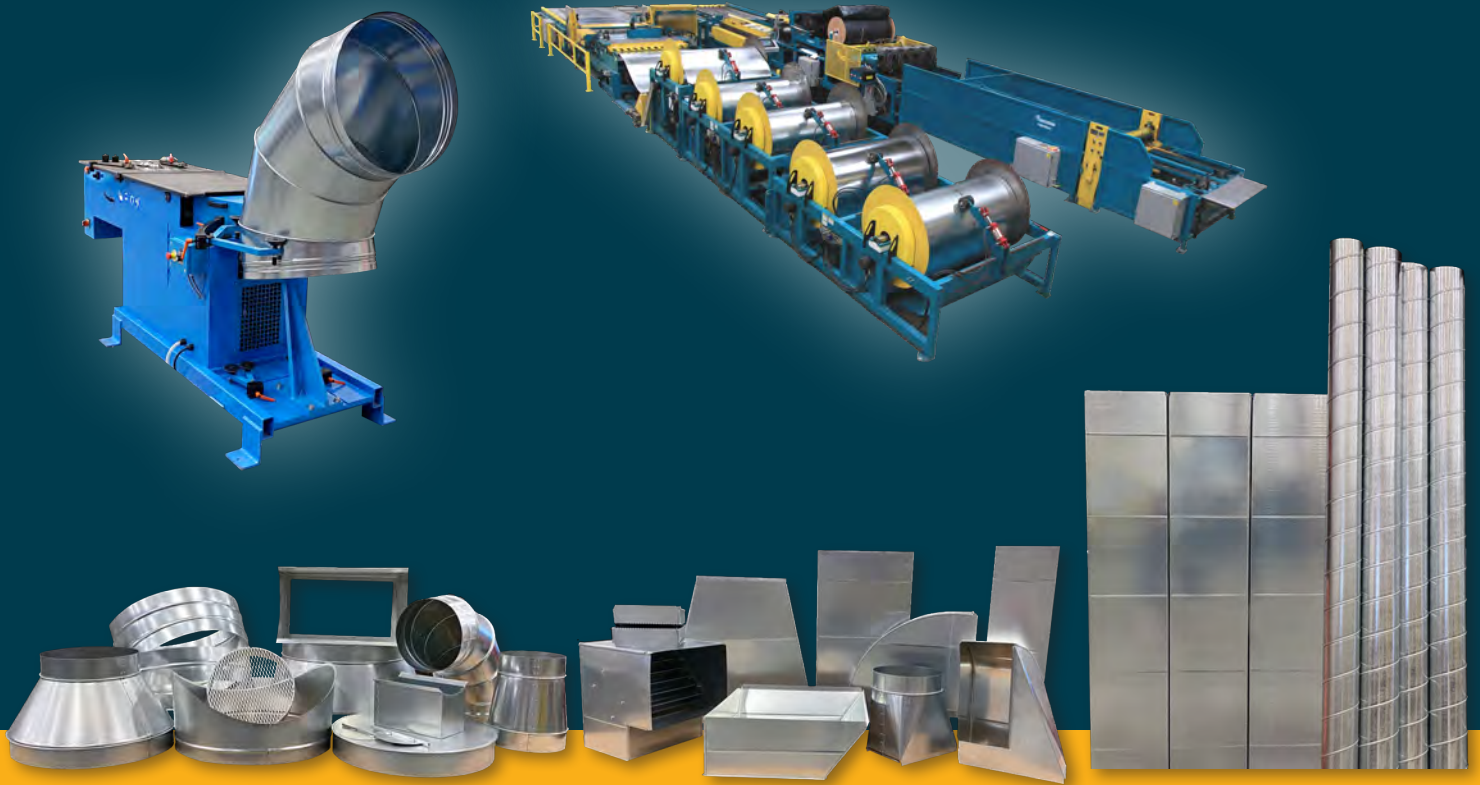
DEFROST CLOCKS

WEBB #	MFR #	DESCRIPTION
268900	GRSDTVAV40	DEFROST TIMER 120-240V 40A 2HP
218111	RBS8141-00	DEFROST TIMER 120V 40A
317380	RBS9145-00	DEFROST TIMER 120-240V 40A 2HP
218114	RBS8145-00	DEFROST TIMER 120V 40A
218112	RBS8141-20	DEFROST TIMER 208-240V 40A



DUCT WORKS

MANUFACTURER OF THE FINEST QUALITY COMMERCIAL & RESIDENTIAL
Rectangular Duct, Spiral Pipe and Fittings



duct@fwwebb.com



F.W. WEBB COMPANY

**Contact your F.W. Webb Salesperson or the Duct Works Sales Team
in Haverhill, Massachusetts at duct@fwwebb.com or 978-374-8448.**

We look forward to hearing from you and servicing your full project needs.



F.W. Webb Motors and Fan Center

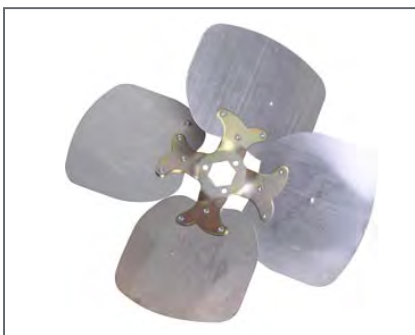
F.W. Webb is fully stocked with all your replacement HVAC/R motor needs. We offer a complete line of electric motors, fan blades, blower wheels, pulleys, belts, and shafts—along with expertise and support for your in-house turnaround replacement projects. We also support rooftop exhaust fans and blowers for large jobs.

With more than 20 years of experience in replacement motors, fans and air movement, Paul Bruno heads up the Center and is at the ready to assist you. Fans and blowers are rebuilt onsite in the Woburn, MA shop.

We'll take your old and OEM obsolete or tough-to-match air moving parts and put together all the replacement inventory you need to get your facility or your HVAC/R customers back in service.



Paul Bruno (left) and Brian Phillips (right)
Motors/Fan Support
781-645-2178 - motor&fan@fwwebb.com



Examples of the products we support:

- Air handlers
- Blowers
- Condensing units
- Draft inducers
- Evaporators
- Exhaust fans
- Fans
- Fan coils
- Ice machines
- In-line fans
- Roof tops
- Unit heaters
- Ventilators

Email, call or stop by for assistance.

50 Everberg Road
Woburn, MA 01801
781-933-1804 • 800-253-7838
Fax: 781-933-3528



F.W. WEBB COMPANY



Heating • Ventilation • Air Conditioning

HVAC RESIDENTIAL EQUIPMENT

- **AC Split Systems 1½-5 Tons**
 - York*
 - 13-20 SEER
 - Guardian 13 SEER
- **Heat Pumps 1½-5 Ton**
 - York*
 - 14-20 SEER
- **Gas Furnaces 80 to 98 % AFUE**
 - York*
 - Single, Two Stage, Variable Speed Modulating
 - Guardian Single Stage
 - Miller / Nordyne
- **Residential Package Units**
 - York - Electric / Gas, Heat Pump
 - Miller / Nordyne – Electric, Manufactured Housing
- **Hi - Velocity Systems**
 - SpacePak
- **Oil Furnaces**
 - Regal
 - Aircor
 - Thermopride
- **Geothermal**
 - York*
 - Bosch
- **Fan Coils**
 - York*
 - ADP
 - First Company
 - Aspen
- **Evaporator Coils**
 - York
- **Ductless Split Systems**
 - Samsung
 - Haier
- **Variable Refrigerant Volume Systems**
 - Samsung

- **Packaged Make-Up Air**
 - Electro Industries
 - Field Controls
- **Exhaust Fans**
 - Broan
 - Fantech
 - Panasonic
 - Soler Palau
- **Window AC Units**
 - Comfort-Aire

HVAC RESIDENTIAL SYSTEM ACCESSORIES

- **Air Cleaners**
 - Honeywell
 - Trion Air Bear
 - Field Controls
 - York*
- **Condensate Pumps**
 - Little Giant
 - Hartel
 - Aspen
 - Saniflo
- **Condenser Pads**
 - Diversitech
- **Fabricated Ductwork**
 - F.W. Webb Duct Works
 - Ductmate
 - North East Metal – NEM
 - Spiral Pipe
- **Whole House Dehumidifier**
 - Honeywell
 - York*
 - UltraAire
- **Portable Dehumidifiers**
 - Comfort-Aire
- **Flex Duct**
 - ATCO
 - Hart & Cooley
- **Heat / Energy Recovery Ventilators**
 - Honeywell
 - Lifebreath
 - York*
 - Fantech
 - Soler Palau

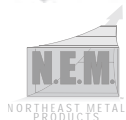
- **Humidifiers**
 - Honeywell
 - York*
 - Field Controls
 - General Filters
- **Line Set Covering**
 - AC Coverguard
 - Fortress
 - Slim Duct
 - Airex Titan
- **Refrigerant**
 - Honeywell
 - ICOR
 - Arkema
 - Chemours
- **Registers and Grilles**
 - Hart & Cooley
 - Rectorseal / Airtec
- **Snow Stands and Wall Mounts**
 - Quick Sling
 - Rectorseal
- **Thermostats**
 - York*
 - PurePro
 - Robert Shaw
 - Honeywell
 - Samsung
 - Ecobee
 - Tekmar
- **IAQ Air Purifiers**
 - Honeywell
 - Field Controls
 - RGF
 - PremierOne
 - Nu-Calgon
- **Zoning Controls**
 - York*
 - Honeywell
 - EWC
 - Samsung
 - Arzel

- **Compressors**
 - Copeland
 - Tecumseh
 - Danfoss
- **Drain Pans**
 - Metal
 - Diversitech
 - Goliath
- **Instruments**
 - Testo
 - Inficon
 - Fieldpiece
 - Supco
 - Fluke
 - UEI
 - Appion Vacuum Pumps
 - Dwyer
 - Bacharach
- **Motors**
 - US Motors
 - Mars
 - Source 1
 - Fasco
 - Marathon
 - Regal Beloit
- **Refrigeration Fittings**
 - Mueller Copper
 - Sporlan Zoomlock
- **Tools**
 - Lenox
 - Milwaukee
 - Klein
 - Malco
 - Turbo Torch
 - Ridgid
 - JBI
 - Ritchie Yellow Jacket
 - Midwest
 - SpeedClean
- **Disposable Air Filters**
 - Airex
 - Glasfoss
 - Koch
 - Trion
 - Honeywell

MISCELLANEOUS

- **Chemicals & Cleaners**
 - NuCalgon
 - PurePro
 - SpeedClean
 - Virginia Chemical

* York products are available at all locations except in PA.





Heating • Ventilation • Air Conditioning

CONTROLS

- **Direct Digital Controls**
 - Johnson Controls
 - Honeywell
- **Electric**
 - Belimo
 - Honeywell
 - Johnson Controls
 - Schneider-Barber Coleman
 - Siemens-Landis, Power
- **Electronic**
 - York*
 - Honeywell
 - Johnson Controls
 - Schneider-Barber Coleman
 - Siemens-Landis
- **Pneumatic**
 - Johnson Controls
 - Honeywell
 - Siebe-Barber Coleman
 - Siemens-Landis, Power

HEATING, A/C AND VENTILATION EQUIPMENT

- **York up to 150 tons***
 - Roof Top Units-G/E- E/E - HP - Dual Fuel
 - Economizers
 - Split Systems Cond and Heat Pumps
 - Air Handlers up to 50 tons
 - Coils
 - Gas Furnaces
 - Indoor Air Quality
- **Adapter Curbs**
 - Cambridgeport
- **Air Handlers**
 - York*
 - Samsung
 - Advance Distributor Products (ADP)
 - Aspen
 - First Company
 - Magic Aire
 - Williams
 - Aermec
- **Air-to-Water Heat Pump**
 - Multiaqua
- **Chillers**
 - York*
 - Samsung
 - Multiaqua

Chillers (cont.)

- Water Furnace (water/water)
- Drake
- Spacepak

Coils

- Advance Distributor Products (ADP)
- York*
- Chandler (Heatcraft)
- Precision Coils (built to spec)

Concentric Diffusers

- Cambridgeport
- Micrometal
- Roof Top Systems

Custom Fabricated Ductwork and Fittings

- F.W. Webb Duct Works

Data Center Cooling Units

- Schneider Electric APC

Ductless Split Systems

- Haier
- Samsung

Duct Heaters

- Modine (gas, hot water)
- Q- Mark (electric)
- Sterling (gas, hot water)
- Warren Electric (electric)
- Stelpro (electric)

Ductwork and Fittings

- Northeast Metal

Energy Recovery Ventilators

- Air Specialties
- Fantech
- Lifebreath
- Soler & Palau
- York*
- PennBarry
- Samsung

Exhaust Fans

- Air Specialties
- Fan Tech
- PennBarry
- Soler & Palau

Filters

- Airex
- Trion
- Honeywell
- Glasfloss
- Koch

Generators

- Generac Portable and Commercial Generators

Geothermal Heat Pumps

- Samsung
- Water Furnace International
- Bosch (Florida HP)

Make Up Air Units

- Modine
- Sterling

Package Terminal AC & HP Units

- Amana
- General Electric
- Comfort Aire

Portable A/C Units

- Koldwave

Registers, Grills, Diffusers

- Hart & Cooley
- Air Specialties
- Krueger

Self Contained Package Units

- Bard
- Skymark
- Johnson Controls
- NCP

Sismic & Vibration Curbs

- Cambridgeport

Spiral Pipe & Fittings

Unit Heaters

- Modine
- Sterling

VAV Boxes

- Johnson Controls
- Air Specialties

VRF

- Samsung

Water Cooled Modular Chillers

- Water Furnace International
- Samsung

Water Source Heat Pumps

- Water Furnace International

COMPRESSORS

- **Hermetic**
 - Danfoss
 - Carlyle
 - Copeland
 - Tecumseh
- **Semi Hermetic**
 - Copeland
 - A-1 Compressors

IAQ

- RGF
- PremiereOne

- Dri Steam
- iWave
- Ultra-aire Dehumidifiers
- Desert Air
- Exhausto

MOTORS

- **Variable Frequency Drive**
 - Eaton
 - Honeywell
 - Johnson Controls

ECM & PSC

- US Motors
- Emerson
- Mars
- Fasco
- Marathon
- Regal Beloist
- Source 1

HVAC COMMERCIAL PARTS

- Asco
- Browning
- Grasslin / Intermatic
- Hercules
- Honeywell
- ICM
- LAU
- Little Giant
- Mars
- Nu-Calgon
- Paragon / Ranco
- Parker
- Source 1
- Speedclean
- Sporlan
- Supco
- Superior Valves
- Virginia

KITCHEN EXHAUST

- Captive Aire

ALSO AVAILABLE

- Air Doors
- Boilers
- Cooling Towers
- Hanging Stocks
- Hydronic Specialties
- Pumps
- Vibration Isolation
- Tubings & Fittings
- Tools
- Refrigerants
- Chemicals
- Valves
- Gauges and more...

* York products are available at all locations except in PA.



Selection. Expertise. Solutions. We've Got It!



F.W. WEBB COMPANY

With roots dating back to 1866, F.W. Webb Company is the Northeast's largest distributor of critical products that help people build, maintain, repair, and operate homes and facilities. Professionals in the residential, commercial, industrial and institutional fields depend on our 90+ locations, extensive inventory, innovative technology, and dedicated trucking fleet to provide everything from a single product for the home to complex engineered systems for large facilities.

We offer the greatest selection of products from the leading manufacturers you trust, supported by a network of local specialists with expertise across every discipline we serve. These highly trained professionals will help you solve problems, make informed choices, and save time. F.W. Webb Company provides the solutions you need to succeed today and grow tomorrow.

- Plumbing
- Heating
- HVAC
- Refrigeration
- Pipe, Valves & Fittings
- Building Controls
- Propane Gas Equipment & Parts
- Water Systems
- Commercial & Industrial Pumps
- Fire Protection & Fabrication
- Industrial PVF Specialties
- Thermoplastic Piping
- High Purity Process Components
- Process Controls
- Water Works
- Environmental Services

