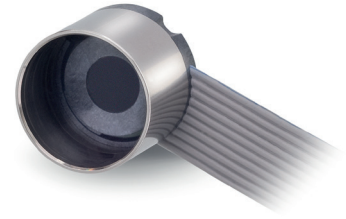


Configure and order your drive online.
xdrives.maxonmotor.com

ENX 10 Encoder Ø10 mm

Configurable

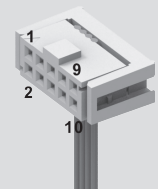
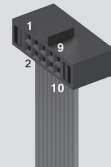


Key Data	EASY	QUAD
Number of channels	3	2
Max. counts per turn	1024	1
Encoder length L max.	mm 8.5	9
Ambient temperature	°C -40 ... +100	-40 ... +100
Weight	g <5	<5

Selection criteria	EASY	QUAD
Speed and rotation direction detection	■	■
Speed and position control	■	▲
Compact and robust design	■	■
High resolution	■	●
Cost effective	■	■

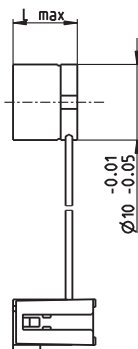
■ suitable ▲ suitable to a limited extent ● not suitable

Specifications	EASY	QUAD
Supply voltage V _{cc}	V 5 ±0.5	5 ±0.5
Max. operating frequency	kHz 500	2
Max. Speed	rpm 30000	30000
Connector	10-pin 1.27 mm multipoint connector e.g. Samtec FTSH series Pin 1: Do not connect ¹ Pin 2: V _{CC} Pin 3: GND Pin 4: Do not connect ¹ Pin 5: Channel A Pin 6: Channel A Pin 7: Channel B Pin 8: Channel B Pin 9: Channel I Pin 10: Channel I	10-pin 2.54 mm multipoint connector ³ (IEC/EN 60603-1-DIN41651) Pin 1: Not connected Pin 2: V _{CC} Pin 3: Channel A Pin 4: Channel B Pin 5: GND Pin 6: Not connected Pin 7: Not connected Pin 8: Not connected Pin 9: Not connected Pin 10: Not connected



Configuration	EASY	QUAD
Counts per turn ²	1 ... 1024	1
Cable length	mm 50, 100, 150, 200, 300, 500, 1000	50, 100, 150, 200, 300, 500, 1000
Alignment of cable outlet in relation to motor flange	° 15	15

maxon Modular System	Page	Dimensions Standard Configuration	M 1:1	Notes
maxon DC motor				
DCX 10 S	EASY, QUAD	58		
DCX 10 L	EASY, QUAD	59		
DCX 12 S	EASY, QUAD	60		
DCX 12 L	EASY, QUAD	61		
DCX 14 L	EASY, QUAD	62–63		
DCX 16 S	EASY, QUAD	64–65		
DCX 16 L	EASY, QUAD	66–67		
DCX 22 S	QUAD	68–69		
DCX 22 L	QUAD	70–71		
DCX 26 L	QUAD	72–73		
DCX 32 L	QUAD	74		
DCX 35 L	QUAD	75		



¹ Applying voltage to these pins can destroy the encoder.
² maxon controllers require a resolution of at least 16 counts per turn.
³ Option: 6-pol 2.54 mm pin header.